



**QUEEN'S
UNIVERSITY
BELFAST**

Blind Image Watermark Detection Algorithm based on Discrete Shearlet Transform Using Statistical Decision Theory

Ahmaderaghi, B., Kurugollu, F., Martinez del Rincon, J., & Bouridane, A. (2018). Blind Image Watermark Detection Algorithm based on Discrete Shearlet Transform Using Statistical Decision Theory. *IEEE Transactions on Computational Imaging*, 4(1), 46-59. DOI: 10.1109/TCI.2018.2794065

Published in:

IEEE Transactions on Computational Imaging

Document Version:

Peer reviewed version

Queen's University Belfast - Research Portal:

[Link to publication record in Queen's University Belfast Research Portal](#)

Publisher rights

© 2017 IEEE.

This work is made available online in accordance with the publisher's policies. Please refer to any applicable terms of use of the publisher.

General rights

Copyright for the publications made accessible via the Queen's University Belfast Research Portal is retained by the author(s) and / or other copyright owners and it is a condition of accessing these publications that users recognise and abide by the legal requirements associated with these rights.

Take down policy

The Research Portal is Queen's institutional repository that provides access to Queen's research output. Every effort has been made to ensure that content in the Research Portal does not infringe any person's rights, or applicable UK laws. If you discover content in the Research Portal that you believe breaches copyright or violates any law, please contact openaccess@qub.ac.uk.

Blind Image Watermark Detection Algorithm based on Discrete Shearlet Transform Using Statistical Decision Theory

Baharak Ahmaderaghi, Fatih Kurugollu, *Senior Member, IEEE*, Jesus Martinez Del Rincon and Ahmed Bouridane, *Senior Member, IEEE*

Abstract—Blind watermarking targets the challenging recovery of the watermark when the host is not available during the detection stage. This paper proposes Discrete Shearlet Transform as a new embedding domain for blind image watermarking. Our novel DST blind watermark detection system uses a non-additive scheme based on the statistical decision theory. It first computes the probability density function (PDF) of the DST coefficients modelled as a Laplacian distribution. The resulting likelihood ratio is compared with a decision threshold calculated using Neyman-Pearson criterion to minimise the missed detection subject to a fixed false alarm probability. Our method is evaluated in terms of imperceptibility, robustness and payload against different attacks (Gaussian noise, Blurring, Cropping, Compression and Rotation) using 30 standard grayscale images covering different characteristics (smooth, more complex with a lot of edges and high detail textured regions). The proposed method shows greater windowing flexibility with more sensitive to directional and anisotropic features when compared against Discrete Wavelet and Contourlets.

Index Terms—Digital image watermarking, Frequency domain, Discrete Shearlet Transform (DST), Discrete Wavelet Transform (DWT), Contourlet Transform (CT), Laplacian distribution.

I. INTRODUCTION

IN the current globally-connected society, where access and distribution of digital multimedia files is ubiquitous and pervasive, virtual opportunities to pirate copyrighted files are in a permanent rise. As a consequence, finding protection methods to block or detect any unauthorized access and keep data transmission safe and secure has become one of the most important challenge during the past decades. Digital watermarking is one method that has been developed in order to protect ownership of data, digital content protection and transaction tracking so that illegal use, modification and distribution of the content can be detected. In this regard, the purpose of digital watermarking is to embed or hide some invisible additional information, called watermark, into another signal such as image, audio or video, known as a host or cover where the visual quality of the embedded host signal should not be significantly degraded. To be effective, watermark detection and extraction should be possible after applying a variety of manipulations and attacks while meeting some criteria in terms of imperceptibility, robustness, security and payload, which are often interdependent.

In general terms, the imperceptibility of a watermark refers to the perceptual similarity between the original and watermarked version of the host data. This is important so as to

keep the degradation of host quality to a minimum, so no obvious difference in the fidelity between the original and watermarked hosts can be noticed [1]. Robustness is a measure of the watermarking methods resistance against different types of attacks, for instance, compression, additive noise, etc., are the types of attacks accrue in digital signal processing [1]. Payload refers to the total amount of information that can be hidden within the digital media [2]. The purpose of increasing watermarking payload is to find how transmit more information while satisfying both watermarking robustness and imperceptibility requirements [3]. In particular, the most challenging issue is how to address the trade-off between robustness and imperceptibility, since enhancing robustness implies necessarily increasing the watermark strength and therefore produces a loss of transparency [4]. Finding such an optimized solution still remains a challenge within the watermarking community.

This paper describes a new framework for robust watermarking of image content due to the fact that digital images constitute a major component of digital multimedia files. A watermarking system can be divided into two main processes: embedding and extracting. Current watermarking techniques are broadly classified according to the embedding domain: spatial and transform domains. Although spatial domain based methods are easy to implement, such techniques suffer from some disadvantages, including failure to achieve better robustness against various attacks. For instance, in [5], since the watermark information is embedded in the least significant bits, the effects of simple manipulations like lossy compression, adding noise and filtering are severe and impair the detection of the watermark.

In contrast, imperceptibility and robustness requirements to a variety of attacks can be achieved more efficiently in watermarking systems, based on various transform domains, since watermarking information is spread out over the entire host image [4]. In this regard, watermarking algorithms based on different transform domains such as the DFT (Discrete Fourier Transform) [6], DCT (Discrete Cosine transform)[7], DWT(Discrete Wavelet Transform)[8], Contourlet Transform [9] and others have been proposed [10]. ORuanaidh et al [11] initially proposed in the use of DFT phase for watermarking. In their proposed method, the watermark is embedded in the most significant frequency components of an image where only the DFT phase is used for embedding. Extraction is carried out using a statistical model. Zou et al.[12], developed

1 a watermarking method based on combining DFT and Hough
2 transform which results in a more robust system that can
3 endure severe attacks such as printing-scanning, scaling and
4 rotating. However, as its main drawback, DFT based schemes
5 suffer against cropping attacks and the watermark cannot sur-
6 vive if aspect ratio changes, since these changes significantly
7 affect the frequency content of the image.

8 DCT was first applied for watermarking by Koch and Zhao
9 [4]. During the embedding process, some of the host image
10 regions are selected randomly to embed the watermark. These
11 regions are transformed using DCT and then some medium
12 frequency coefficients are modified. In their seminal paper,
13 Cox *et al.* [13] proposed a spread spectrum based embedding
14 algorithm selecting the most perceptually significant features
15 which is represented by DCT coefficients of the given image.
16 In this algorithm, a Gaussian watermark sequence is embedded
17 into the 1000 highest magnitude DCT coefficients while low
18 frequency regions around the upper-left corner are not used
19 to preserve invisibility. On the other hand, a combination of
20 DCT and single value decomposition (SVD) was proposed
21 for watermarking [14] in order to increase the imperceptibility
22 while obtaining the highest possible robustness. In this method
23 SVD is applied so that the singular values of the watermark are
24 embedded into the DCT coefficients of the original image. The
25 authors argue that better imperceptibility can be achieved by
26 embedding only the singular values of the watermark into the
27 original image. Moreover, better robustness can be obtained
28 by embedding the highest singular values having the highest
29 energy of the watermark into the DC components of the
30 original image. However, the main drawbacks of DCT-based
31 watermarking techniques relate to shortcomings in robustness
32 against high compression levels and have performed poorly
33 for de-synchronization based attacks such as geometric distor-
34 tions.

35 DWT transform based schemes were proposed in order to
36 overcome some of the drawbacks of DCT- and DFT-based
37 systems by using multi-resolution techniques. A few water-
38 marking schemes were also proposed based on combining
39 DCT and DWT in order to provide better performance against
40 some attacks [15]. Other works have been carried out to further
41 develop the DWT-based watermarking methods. In [16] SVD
42 was applied to the watermark and original image coefficients
43 in all the frequency bands of DWT. During the embedding
44 stage, the original image was first decomposed into 4 sub-
45 bands using DWT, and then the SVD was applied on each
46 band by modifying their singular values.

47 In [17] the coefficients of the original image are quantized in
48 the wavelet domain and the binary watermark is embedded into
49 the wavelet-blocks that can be obtained by grouping four co-
50 efficients at different sub-bands at corresponding coordinates.
51 The method has shown promising results against various types
52 of attack, including the geometric and non-geometric attacks.
53 In spite of the success of DWT and its different variants, such
54 as the dual tree complex wavelets transform (DTCWT) [18],
55 and the non-redundant complex wavelets transform (NRCWT)
56 [19], multi-resolution transforms based on DWT suffer of
57 limited directionality in their filtering structure [19].

58 Images to be watermarked usually contain sharp transitions

59 between objects in the scene such as lines, edges and corners
60 or textural regions. These structures are formed in multiple
and fine grain directions and orientations. The coefficients
in DWT based transforms cannot accurately represent these
structures because of their limited directionality. Although
DTCWT-based methods exhibit relevant advantages in com-
parison with the previous transform domains in this regard
by having improved directionality with more orientations and
approximate Shift Invariance, it is difficult to design it with
perfect reconstruction properties and good filter characteristics
to solve line-like edges discontinuities across curves (curve
singularities) and geometrical smoothness issues [18].

To overcome this limitation, a variety of transforms such as
Ridgelets, Curvelets [20] and Contourlet (CT) [21] have been
deployed to provide a better framework for capturing the direc-
tionality and the geometry of the scene using multiresolution
decomposition. Curvelets and ridgelets, same as DWT, their
construction is not associated with a multiresolution analysis.
This and other issues make the discrete implementation of
curvelets very challenging as claimed in [22], therefore two
different implementations of it have been suggested [20] and
[23]. In an attempt to provide a better discrete implementation,
The Contourlet transform was developed as an improvement
over wavelet and Curvelet and ridgelets [21].

Zaboli and Moin [24] proposed a CT based watermarking
using human visual system characteristics. In their method,
the host image is first decomposed using CT into four levels.
In order to add the watermark, a binary logo is scrambled
through a well-known PN sequence in order to enhance the
system security and provides a random distribution of original
image. A more recent research is carried out based on a
combination of SVD and CT [25], where the eigenvalues of
a QR watermark matrix are embedded into the eigenvalues of
the original images coefficients in the Contourlet domain. This
method has shown an improved robustness against various
types of attacks such as scaling, compression and filtering.
Moreover, the proposed method has better imperceptibility
when compared with other Contourlet based watermarking
techniques. Although Contourlet aims to better capture the
directionality of the image features, this is still insufficient
and causing visual artifacts into the host image, which is not
a desirable property in applications such as watermarking [23].

Watermarking techniques also can be classified based on the
usage of the original image during extraction process. If during
the extracting procedure the original image is required this is
called non-blind watermarking [13], whereas a technique is
called blind if it works under the assumption that the original
image will not be available at extraction. In this paper, the
main focus is on blind digital image watermarking. In a blind
schema the watermark extraction can be obtained by applying
statistical methods. Cheng and Huang [26] pointed out that
the watermark detection problem can be viewed as a statistical
hypothesis testing problem. Therefore, this type of detection
requires a suitable modelling for the probability distribution
function (pdf) of the host image. Barni *et al.*[27], applied
Weibull pdf in order to model the magnitude of a set of
full-frame discrete Fourier transform coefficients. The DWT
coefficients modelled using Generalized Gaussian (GG) [28]

or Laplacian pdf [29].

In this paper we propose a new transform domain using Discrete Shearlet Transform (DST) to the problem of image blind watermarking. The DST shows promising results in image processing applications such as edge detection [22] and image denoising [30], in compare with other transforms such as the DWT and CT, both visually and with respect to PSNR. This leads us to conclude that its directional properties have potential in watermarking. As previously explained, complex structures present in images, such as curves, edges and textural regions are not easy to capture. The Shearlet transform has the ability to capture image features more precisely. For example, edges can be more accurately captured due to the efficient multi-resolution filter which produces more specific directional localization for a higher number of directional components. This means that some features that might remain undetected in one resolution can be spotted in another resolution. This can potentially increase the data embedding capacity for watermarking while preserving the imperceptibility requirements and providing higher robustness. This can be achieved by embedding more information in the edges of the image as the human visual system is less sensitive to changes near the edges. The DST transform offers a plethora of advantages for watermarking problems, namely; (i) it captures directional features more precisely, (ii) it has no restrictions on the number of directions and no constraints on the size of the supports in its filter structure in comparison with previous transforms [31]. This leads to produce better watermark adaptation to the host image under consideration. By taking into account these advantages, we explore the usage of DST for image watermarking in order to achieve high levels of imperceptibility and robustness while still increasing payload.

In our earlier works, we already proposed DST as the transform domain for a non-blind watermarking framework based on spread spectrum [32] and a further refinement of it using perceptual models based on the human visual system [33]. While these earlier works showed the potential of DST for watermarking, they were both limited for their non-blind nature, requiring the original image during extraction. To overcome this limitation, this paper proposed a new framework on blind watermarking using DST.

The novel contributions of this work can be summarized as follows:

- Novel use of DST for blind watermarking applications. This transform has not been used in watermarking applications before, according to the best knowledge of the authors. The only exceptions are its use in our conference papers [32] for a basic non-blind watermarking framework as part of our preliminary work and conference papers [33] for a basic non-blind perceptual watermarking model.
- A fully new framework on blind watermarking using DST. This method is derived based on the statistical decision theory, Bayes decision theory, the Neyman-Pearson criterion, and the distribution of the DST coefficients in the case of grey scale images.
- The pdf of the DST coefficients is estimated as a Lapla-

cian distribution. This approach is evaluated against all different attacks using a variety of images (30 images) having different image content and characteristics.

The rest of the paper is organized as follows: Section II provides a brief description of the Discrete Shearlet Transform. The proposed watermarking system is described in Section III. Section IV covers the implementation details of the proposed method, where results and comparative evaluations against different attacks are given. Finally, Section V concludes the paper.

II. BACKGROUND: THE DISCRETE SHEARLET TRANSFORM

Shearlet transform is an affine function containing a single mother Shearlet function that is parameterized by scaling, shear and translation parameters with the shear parameter capturing the direction of the singularities [31]. An important advantage of this transform over other transforms is due to the fact that there are no restrictions on the number of directions for the shearing. There are also no constraints on the size of the supports for the shearing, unlike, for instance, directional filter banks [22] where using a small window size would result in a performance loss. Therefore, the Shearlet transform is designed to deal with directional and anisotropic features, typically present in images, and has the ability to effectively capture the geometric information of edges.

The Shearlet transform is implemented by applying a Laplacian pyramid scheme and directional filtering [22]. Shearlets are formed by dilating, shearing and translating the mother function $\psi \in L^2(\mathbb{R}^2)$ [34]. Discrete Shearlet transform is obtained by sampling continuous Shearlet transform on a discrete subset of the Shearlet group S , which are associated to an orthonormal basis for $L^2(\mathbb{R}^2)$ [31]. The Discrete Shearlet transform (DST) for a mother function ψ is defined as below:

$$SH\{\psi_{j,k,l} = 2^{3/2j}\psi(B_k A_{2^j} - L) : j, k \in \mathbb{Z}, L \in \mathbb{Z}^2\} \quad (1)$$

where j, k, l are the scale, orientation and location indexes and

$$A = \begin{pmatrix} 4 & 0 \\ 0 & 2 \end{pmatrix}, B = \begin{pmatrix} 1 & 1 \\ 0 & 1 \end{pmatrix}$$

are the dilation matrix and the shear matrix respectively. For a given image $f(N_{rows} \times N_{columns})$, the Discrete Shearlet transform can be expressed as [34]:

$$\begin{aligned} & \langle f, \psi_{j,l,m}^d \rangle \\ &= 2^{3/2j} \int_{\mathbb{R}^2} \hat{f}(\xi) \overline{\{V(2^{-2j}\xi)w_{j,l}^d(\xi)e^{2\pi i\xi A_d^{-j} B_d^{-l} m}\}} \end{aligned} \quad (2)$$

where

$$V(\xi_1, \xi_2) = \hat{\psi}_1(\xi_1)_X D_0(\xi_1, \xi_2) + \hat{\psi}_1(\xi_2)_X D_1(\xi_1, \xi_2) \quad (3)$$

and X denotes the indicator function of the set D, D_0 and D_1 are the horizontal and vertical trapezoids, respectively, $d \in \{0, 1\}$, $\xi = (\xi_1, \xi_2) \in \mathbb{R}^2$, $j \geq 0$, $l = (-2^j, \dots, 2^{j-1})$ is the junction of the horizontal trapezoids, $w_{j,l}^d(\xi)$ is a window

function localized on a pair of trapezoids and V is the pseudo-polar coordinates.

$$D_0 = \left\{ (\xi_1, \xi_2) \in \mathfrak{R}^2 : |\xi_1| \geq \frac{1}{8}, \left| \frac{\xi_2}{\xi_1} \right| \leq 1 \right\} \quad (4)$$

$$D_1 = \left\{ (\xi_1, \xi_2) \in \mathfrak{R}^2 : |\xi_2| \geq \frac{1}{8}, \left| \frac{\xi_1}{\xi_2} \right| \leq 1 \right\}.$$

Thus the Shearlet coefficients can be obtained as

$$X = \int \int 2^{-3/2j} g_j(u, v) \overline{(w(2^j v - l))} \exp(2\pi i \left(\frac{n_1 + n_2}{4_j} \xi_1 + \frac{n_2}{2_j} \xi_2 \right)) d\xi_1 d\xi_2. \quad (5)$$

where $g_j(u, v) \overline{(w(2^j v - l))} = \hat{f}(\xi) \{V(2^{-2j}\xi) w_{j,l}^d(\xi)\}$, is the discrete samples on a pseudo-polar grid. W is a window function localized on a pair of trapezoids, $g_j(n_1, n_2)$ are the values of the DFT on a pseudo-polar grid, n_1 and n_2 are finite sequence of values for a given image $N_{rows} \times N_{columns}$ [31] and u, v are the pseudo-polar coordinates $(u, v) \in \mathfrak{R}^2$ as follows:

$$\begin{aligned} (u, v) &= \left(\xi_1, \frac{\xi_2}{\xi_1} \right) \text{ if } (\xi_1, \xi_2) \in D_0 \\ (u, v) &= \left(\xi_2, \frac{\xi_1}{\xi_2} \right) \text{ if } (\xi_1, \xi_2) \in D_1. \end{aligned} \quad (6)$$

In other words, a DST applies filtering to a given image using the Laplacian pyramid algorithm [35], which is implemented in the spatial domain. This is accomplished in the multiscale partition by decomposing an image into a low-pass and a high-pass filtered image and then downsampling the result by 4. In order to extract the frequency components of the input image, directional localization for different directional components is obtained by translating a window function W . Depending on the chosen shearing filter size, the first level decomposition generates 4 or 8 sub-bands. An illustration of the frequency-domain implemented Shearlet support for 4 scales is shown in Figure 1. Figure 2 shows the structure of the orientations corresponding to each DST sub-bands and the corresponding coefficients for an example image. It is worth noticing that different sub-images have the same size, however; for illustrative purposes in Figure 2(b) they are shown with the different sizes.

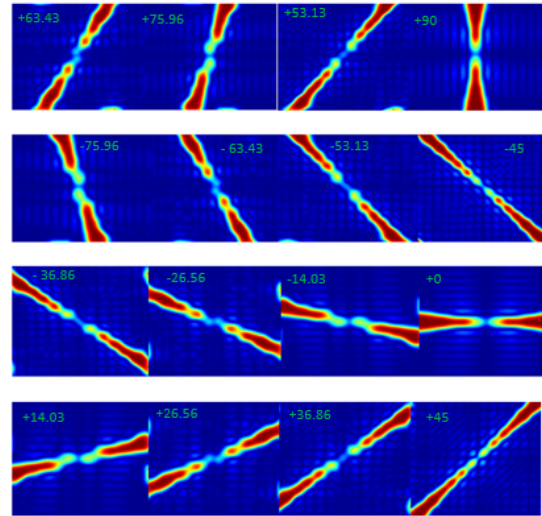


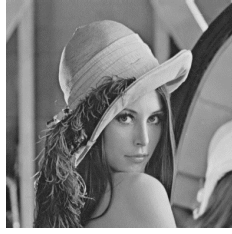
Fig. 1. Frequency support of the basis functions corresponding to the Shearlet fourth level decomposition with 16 directions orientations

III. DST-BASED BLIND WATERMARKING

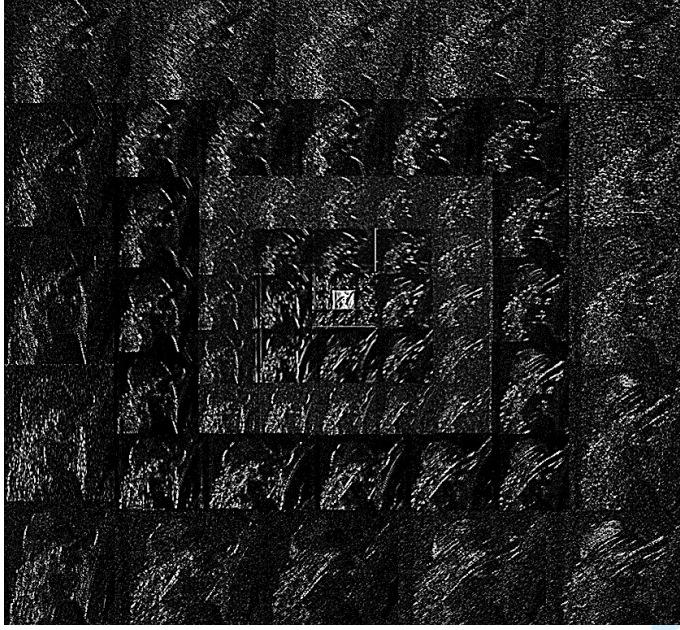
In relation to its application for image watermarking, the DST ability to better represent directional features as claimed in [36], may allow watermark embedding to adapt to the diagonal features in the host image more efficiently. In this section, a new DST-based watermarking framework for blind watermarking is developed in order to explore the possible improvements on DST performance against signal processing, geometric and compression based attacks. In addition, this proposed new blind watermark detection scheme for DST coefficients is optimal for non-additive schemes relying on the statistical decision theory.

A. Digital Image Statistical Watermark Detection Based On Discrete Shearlet Transform Domain

Non blind watermarking systems, such as the one proposed in [32], are limited in their application field, since they require access to the host image during the detection process. However, this is not always the case for some applications such as image authentication [4]. As alternative blind watermarking, targets the recovery of the watermark when the host (in this case an image) is not available during the detection stage. This makes blind watermarking systems more complicated, but more practical since the original image is not required in the receiver side. In order to reconstruct the watermark, blind schemas assume that original and watermarked coefficients are strongly correlated [37]. Under this assumption, the watermark detection problem can be viewed as a statistical hypothesis testing problem [37]. Thus, the statistical behaviour of the noisy transformed coefficients can be used to derive a decision rule which decides whether a candidate watermark is actually embedded in the data (hypothesis H_1) or not (hypothesis H_0). In this section a new blind watermark detection scheme for DST coefficients is proposed as optimal for non-additive schemes relying on the statistical decision theory. The proposed method is derived according to the Bayes



(a)



(b)

26.96°	36.86°	46°	55.17°	63.47°				
14.83°	26.96°	36.86°	46°	55.17°	63.47°	73.96°		
0°	14.83°	26.96°	36.86°	46°	55.17°	63.47°	73.96°	
-14.83°	0°	14.83°	26.96°	36.86°	46°	55.17°	63.47°	73.96°
-26.96°	-14.83°	0°	14.83°	26.96°	36.86°	46°	55.17°	63.47°
-36.86°	-26.96°	-14.83°	0°	14.83°	26.96°	36.86°	46°	55.17°
-46°	-36.86°	-26.96°	-14.83°	0°	14.83°	26.96°	36.86°	46°
-55.17°	-46°	-36.86°	-26.96°	-14.83°	0°	14.83°	26.96°	36.86°
-63.47°	-55.17°	-46°	-36.86°	-26.96°	-14.83°	0°	14.83°	26.96°

(c)

Fig. 2. (a) Original grayscale image Lena. (b) An illustration of the DST transforms coefficients (the coefficients are multiplied by 30 to enhance the contrast for the sake of visualization), (c) The angles covered in DST-sub-bands.

decision theory, the Neyman-Pearson criterion which is used to minimize the missing detection probability subject to a fixed false alarm probability (P_{FA}) [38], and the probability density function (pdf) distribution of the DST coefficients.

B. DST coefficient probability distribution function

In order to apply the decision theory and derive the optimum behaviour of the ML (Maximum-likelihood) detector, a suitable distribution model for the probability distribution function (PDF) of the DST coefficients is required as a first step. We have estimated the PDF of DST coefficients for thirty images (see experimental section for more details on the data) for all five resolutions and 49 sub-bands.

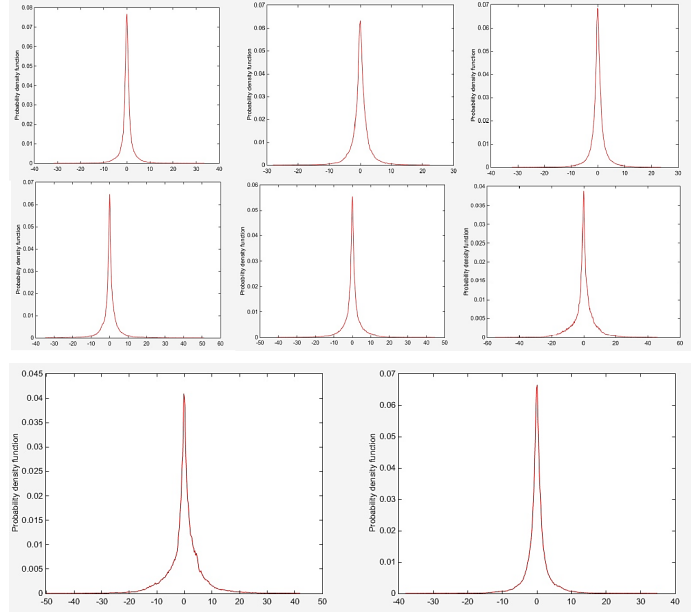


Fig. 3. PDF of DST transformed coefficients for Lena image. Graphs represent the coefficient pdfs corresponding to all 8 sub-bands at the second resolution.

It can be noticed, as shown in Figure 3, that the statistical model of the Shearlet approximates a Laplacian distribution, therefore this model can be better modelled as a Normal Inverse Gaussian (NIG). The Laplacian distribution is defined as follows:

$$f(x) = \frac{\lambda}{2} \exp(-\lambda|x|) \quad (7)$$

The Laplacian is symmetrical about zero, and it can be readily matched to the sample DST distribution by finding the appropriate parameter for λ . It is also worth to notice that the statistical model of the Shearlet coefficients can be modelled as a Normal Inverse Gaussian (NIG) [39]. However, in our case, this distribution is not best choice due to have high computational cost caused by complexity of the mathematical structure of this distribution (it contains four variables that need to be estimated simultaneously) which leads to difficulty in order to apply the central limit theorem [40]. This is required in our blind watermarking framework, in order to calculate P_{FA} . Therefore, and as the most suited distribution model, the Laplacian distribution, was chosen. An example is shown in Figure 4 where the DST coefficients distribution averaged for both all thirty images and all the fourth level sub-bands are illustrated and compared with a Laplacian, Gaussian distribution and NIG approximations.

In order to validate the previous findings, the similarity between the real DST coefficient distribution and the hypothetical distribution models using NIG, Laplacian and Gaussian, are estimated using Relative Entropy (Kullback-Leibler divergence). The Relative Entropy, D , measured how well our hypothetical distribution Q fills the observation of the real distribution P between the DST coefficients and the estimated one Q , and is obtained as below, where achieving smaller value for D implies greater similarity between two

distributions, being $D \geq 0$.

$$D_{KL}(P \parallel Q) \propto \sum_x p(x) \log_2 \left(\frac{p(x)}{Q(x)} \right). \quad (8)$$

The D value obtained 12, 17 and 25 for NIG, Laplacian and Gaussian distribution, respectively. These results confirm that NIG is the nearest distribution to the real one while the Laplacian distribution remains a good approximation to the NIG model.

C. Hypothesis Testing Problem and Formulation

Given an image I , the aim is to verify whether the image I contains the watermark W^* (chosen from the sequence of possible watermark W) or not. By applying statistical detection theory the following hypotheses are under consideration [40]:

Hypothesis H_0 :

- *Case 1*: The DST coefficients, Y , do not contain any watermark.
- *Case 2*: The DST coefficients, Y , contain a watermark other than W^* . For notation purpose, we will denote that the DST coefficients Y ; contain a watermark w_0 , where w_0 is another random watermark selected from a set W of watermarks different from W^* .

Hypothesis H_1 :

- The DST coefficients, Y , contain the watermark W^* .

The embedding rule adopted in this paper is multiplicative (non-additive) embedding due to its adaptation with frequency domain and the fact that it fulfils invisibility constraints thus increasing system security [41]:

$$y_i = x_i(1 + \alpha w_i^*) \quad (9)$$

where $x = (x_1, \dots, x_N)$ is a sequence of the original DST coefficients of image I , $w^* = (w_1^*, \dots, w_N^*)$ is the watermark sequence that is uniformly distributed in $[-1, 1]$, a is a gain factor controlling the watermark strength, and (y_1, \dots, y_N) is the sequence of watermarked DST coefficients of the watermarked image, I' . By relying on the decision theory, the observation variables are the vector Y of possibly marked coefficients. The likelihood ratio of these coefficients to be watermarked $l(Y)$ is obtained as:

$$l(Y) = \frac{f_y(Y|w^*)}{f_y(Y|w_0)} \leq T \quad (10)$$

where $f_y(y|w)$ is pdf of the vector Y conditioned to w and T is the decision threshold. Note that, for Hypothesis H_0 , Case 1 and Case 2 can be treated together under the assumption that w_0 is allowed to include the null sequence.

As we deal with image watermarking in this paper, therefore following assumptions are read for sake of mathematical

calculation.

Lemma 1: The components of Y are independent of each other and Y satisfies $f_y(Y|w_0) > 0$ by considering Hypotheses H_0 and H_1 and equation (15), it can be shown that:

$$H_0 = \text{case1} : y_i = x_i \quad (11)$$

$$H_0 = \text{case2} : y_i = x_i(1 + \alpha w_{0i}) \Rightarrow x_i = \frac{y_i}{1 + \alpha w_{0i}} \quad (12)$$

To further calculate the likelihood ratio, the pdf of DST coefficients is required. By assuming the previously justified Laplacian distribution as the pdf of the DST coefficient:

$$f(x_i) = \frac{\sqrt{2}}{2\sigma_i} \exp\left(-\frac{\sqrt{2}}{\sigma_i} |x_i - \mu_i|\right) \quad (13)$$

which is equivalent to the following expression when using $\frac{\sqrt{2}}{\sigma_i} = \lambda$

$$f(x_i) = \frac{\lambda}{2} \exp(-\lambda |x_i - \mu_i|) \quad (14)$$

where μ_i and σ_i^2 are the mean and variance of the sub-band to which the coefficients belong.

Lemma 2: Barni and Bartolini [40] formulated that, under the assumption of an imperceptible watermark, i.e. when the embedding strength is set to be much smaller than one ($\alpha \ll 1$), then:

$$P(y|w) \approx P(y|0) \quad (15)$$

In this case the integral is very small and centered at y_i , therefore the component can be linearly approximated using Taylor's theorem. By applying the previous change of notation and a new **Lemma 2**, $l(y)$ is defined as follows:

$$l(y) = \frac{\prod_{i=1}^N \left(\frac{\lambda}{2} e^{-\lambda \left| \frac{y_i}{1 + \alpha w_i^*} - \mu_{ix_i} \right|} \right)}{\prod_{i=1}^N \left(\frac{\lambda}{2} e^{-\lambda |y_i - \mu_{ix_i}|} \right)} \quad (16)$$

$$T_2 = \left(\frac{1}{2}\right)^N T$$

The detector decide H_1 if $\text{Lnl}(y) > \text{Lnl}T_2$

The detector decide H_0 if $\text{Lnl}(y) < \text{Lnl}T_2$

The likelihood ratio is obtained as follows :

$$\begin{aligned} \sum_{i=1}^N (|y_i - \mu_{ix_i}| - |1 + \alpha_i w_i^*|^{-1} |y_i - \mu_{ix_i} - \mu_{ix_i} \alpha_i w_i^*|) \\ \leq \frac{1}{\lambda} \ln(T_2) \end{aligned}$$

where $\lambda = \frac{\sqrt{2}}{\sigma_i}$

$$\begin{aligned} \sum_{i=1}^N (|y_i - \mu_{ix_i}| - |1 + \alpha_i w_i^*|^{-1} |y_i - \mu_{ix_i} - \mu_{ix_i} \alpha_i w_i^*|) \\ \leq \frac{\sigma_i}{\sqrt{2}} \ln(T_2) \\ T_3 = \frac{\sigma_i}{\sqrt{2}} \ln(T_2) \end{aligned} \quad (17)$$

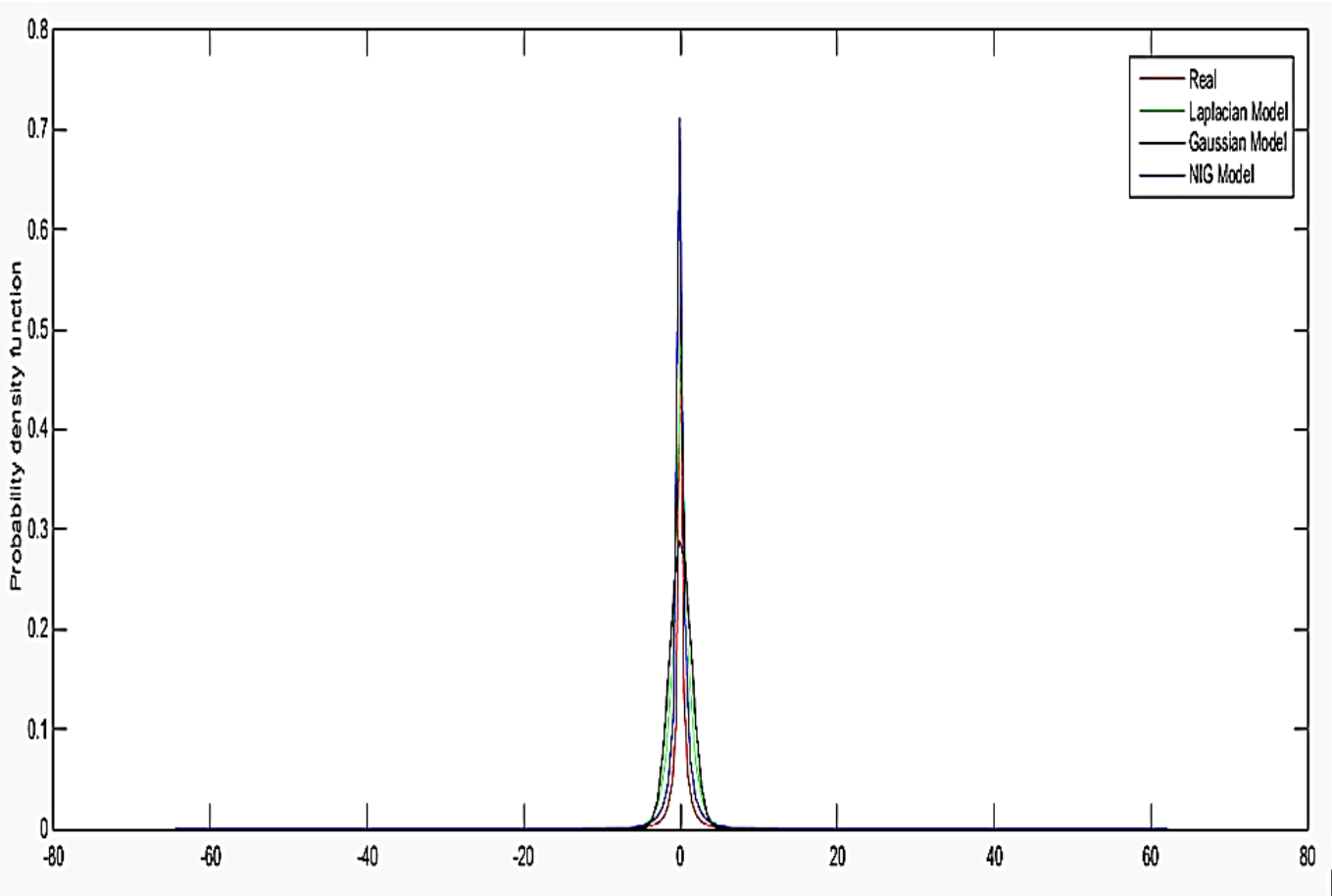


Fig. 4. Distribution of DST transformed coefficients for all thirty images in all fourth level sub-bands coefficients fitted with NIG, Laplacian and Gaussian distributions curve.

By simplifying, $g_i = (|y_i - \mu_{ix_i}| - |1 + \alpha_i w_i^*|^{-1} |y_i - \mu_{ix_i} - \mu_{ix_i} \alpha_i w_i^*|)$ the decision rule is obtained as follows:

$$Z(y) = \sum_{i=1}^N g_i > T_3 \quad (18)$$

D. Decision Threshold

By analysing the decision rule obtained from the previous section, it can be seen that the detector operates by comparing the likelihood ratio against a detection threshold:

$$T = \frac{p_0(l | H_0)}{p_1(l | H_1)} \quad (19)$$

where p_0 and p_1 are the prior probability of hypotheses H_0 and H_1 , respectively. In a desirable system, the threshold should be set to minimize the overall error probability P_e . This can be achieved by setting the missed detection probability P_m (failure to detect the presence of the watermark in an image that contains one) and the false alarm probability P_{FA} (detection of watermark in an image when it does not actually contain one) to be equal. However, in the case of an attack, the threshold selected to minimize the error probability P_e

will not be suitable since the missed detection probability P_m becomes higher than the false alarm probability P_{FA} . In order to address this issue, the Neyman-Pearson criterion can be used to obtain the threshold T in such a way that the missed detection probability is minimized, subject to a fixed false alarm probability [38].

$$\begin{aligned} D &= (H_1 | R = H_0) \\ P_{FA} &= P(D) \\ &= P(Z(y) > T | w_0) = P(Z(y) > T) \\ &= \int_T^\infty f_{z_x} Z(x) dz_x \end{aligned} \quad (20)$$

where

$$\begin{aligned} Z(x) &= Z(y)|_{y=x} \\ &= P(Z(y) > T | w_0) = P(Z(y) > T) \\ &= \frac{\sqrt{2}}{\sigma_i} (|x_i - \mu_{ix_i}| - |1 + \alpha_i w_i^*|^{-1} |x_i - \mu_{ix_i} - \mu_{ix_i} \alpha_i w_i^*|) \end{aligned} \quad (21)$$

By applying the central limit theorem, the PDF of $Z(x)$ can be assumed to be a normal distribution [38] with mean

and variance as follows:

The mean can be derived as:

$$\begin{aligned} \mu_{z(x)} &= E_{z(x)} \\ &= E\left(\frac{\sqrt{2}}{\sigma_i}(|x_i - \mu_{ix_i}| - |1 + \alpha_i w_i^*|^{-1}|x_i - \mu_{ix_i} - \mu_{ix_i} \alpha_i w_i^*|)\right) \\ &= E|x_i - \mu_{ix_i}| + E(-|1 + \alpha_i w_i^*|^{-1}|x_i - \mu_{ix_i} - \mu_{ix_i} \alpha_i w_i^*|) \\ &= \sum_{i=1}^N \left[1 - |1 + \alpha_i w_i^*|^{-1}(\lambda |\mu_i \alpha_i w_i^*| + \frac{1}{\lambda} \exp(-\lambda(\mu_i \alpha_i w_i^*)))\right] \end{aligned} \quad (22)$$

Similarly for calculating variance:

$$\sigma_{z(x)}^2 = E(Z^2(x)) \quad (23)$$

$$\begin{aligned} \sigma_{z(x)}^2 &= \sum_{i=1}^N \left[1 + |1 + \alpha_i w_i^*|^{-2} * (2 - \exp(-2\lambda|\mu_i \alpha_i w_i^*|)) - \right. \\ &2|1 + \alpha_i w_i^*|^{-1} \exp(-\lambda(\mu_i \alpha_i w_i^*)) - 2\lambda|\mu_i \alpha_i w_i^*| \exp(-\lambda(\mu_i \alpha_i w_i^*)) \\ &\left. * (|1 + \alpha_i w_i^*|^{-1} + |1 + \alpha_i w_i^*|^{-2})\right] \end{aligned} \quad (24)$$

Then, false alarm probability can be calculated:

$$\begin{aligned} P_{FA} &= \int_T^\infty f_{z_x} Z(x) dz_x \\ &= \int_T^\infty \frac{1}{\sqrt{2\pi\sigma_{z(x)}^2}} \exp\left(-\frac{|Z_x - \mu_{z_x}|}{2\sigma_{z(x)}^2}\right) dZ(x) \\ &= Q\left(\frac{T - \mu_z}{\sigma_z}\right) \end{aligned} \quad (25)$$

where Q is the Q-function or tail probability of the standard normal distribution of $Z(x)$:

$$P_{FA} = Q\left(\frac{T - \mu_z}{\sigma_z}\right) \Rightarrow Q^{-1}(P_{FA}) = \frac{T - \mu_z}{\sigma_z} \quad (26)$$

Finally, the threshold will be obtained as below:

$$T = \sigma_z Q^{-1}(P_{FA}) + \mu_z. \quad (27)$$

The embedding and detecting framework proposed for our blind watermarking system, is depicted in Figure 5. During the embedding process [Upper block], first the original image $N \times N$, is decomposed to 5 levels using Discrete Shearlet Transform (DST), then the watermark consists of a sequence of random real numbers uniformly distributed in the range $[-1,1]$ of length N is generated and embedded into the original image I . Once the watermark is embedded into the Discrete Shearlet coefficients, the image is recomposed to create the watermarked image I' . The watermarked image is then passed through the attack channel [lower block] where some distortions are applied in order to remove the watermark. This produces the attacked image I'' that is then passed to

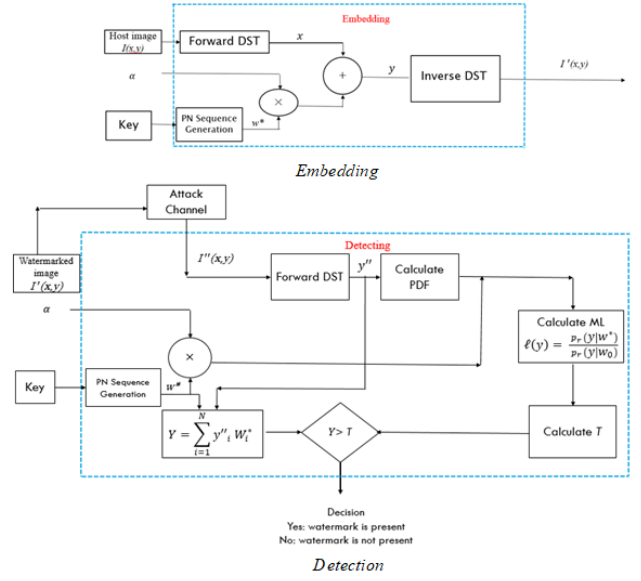


Fig. 5. Proposed Watermarking System. Upper block describes the watermarking process while the lower block depicts the detection process.

the detecting stage. It is important to remember that in this blind schema, the original image is not available during the detection stage. Instead, a statistical model is used during the decision stage and calculated directly from the watermarked and possibly attacked images.

IV. PERFORMANCE EVALUATION

To verify the effectiveness of the proposed algorithm, a series of experiments were conducted.

A. Dataset

In our experiments, thirty 512×512 sized well-known grayscale images were used as host images. A set of standard test images which are used frequently in the literature were selected from a wide range of image processing databases[42] to represent different image features (Figure 6). Some of these images are smooth with a lack of detailed features, others are more complex with a lot of edges and some textured regions. The rest contains high detail textured regions. This set is selected from the following references [10],[19].

B. Blind Watermarking

In this section, the performance of the blind statistical detector described in Section III.B is tested on the thirty standard grayscale 512×512 images (Figure 6). The original image is not available during the detection stage. Instead, a statistical model is used during the decision stage and calculated directly from watermarked and possibly corrupted images. Each image is transformed using DST and the watermark consists of a sequence of random real numbers uniformly distributed in the range $[-1, 1]$. The watermark is embedded in the most significant coefficient through all DST levels at the 5th level of resolution and sub-bands of the host image. The



Fig. 6. Set of images used for embedding watermark

watermark detection is performed in the transform domain using maximum-likelihood detection, whereby the decision threshold is calculated using the Neyman-Pearson criterion. In order to investigate the performance of our proposed method, the results from all the different method are compared under the same conditions. DWT coefficients were selected from the 3rd level of resolution as suggested by [43]. CT coefficients were selected from the sub-band on the 3rd levels of resolution as suggested in [3] to optimise imperceptibility and robustness. Three performance metrics were taken into account during this analysis: The imperceptibility of the watermark by using the Peak Signal-to-Noise Ratio (PSNR), the Root-mean squared error (RMSE), and Structural similarity (SSIM) as fidelity measurements, the probability of false alarm and the probability of missed detection and the robustness of the watermark against a number of commonly used attacks. In particular SSIM measures the quality of the image using an initial distortion-free image as reference. SSIM is designed to improve traditional methods such as PSNR and MSE which have been proved to be inconsistent with the human eye perception [44]. The resulting SSIM index is a decimal value between -1 and 1, where 1 is only reachable in the case of two identical sets of data.

By comparing the results using SSIM (Figure 7) and RMSE (Figure 8) as metrics, it is concluded that the proposed algorithm based on DST has a better imperceptibility as reflected in having smaller RMSE (which indicates that the watermarked image is close to the original one on a pixel-by-

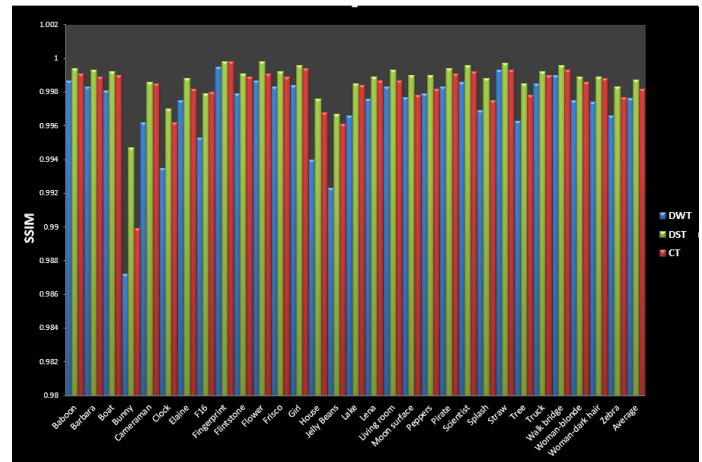


Fig. 7. SSIM distortions between original and watermarked for all images

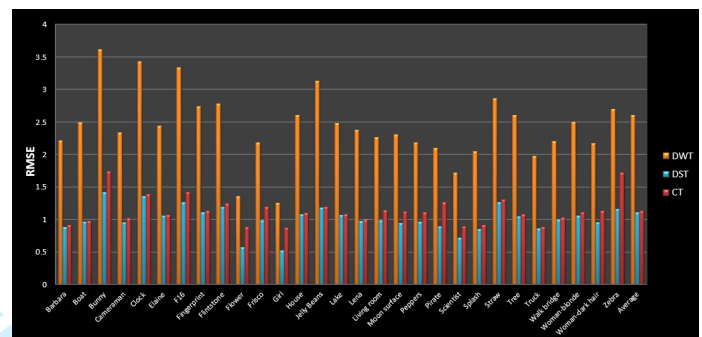


Fig. 8. Average RMSE distortions for all images

pixel basis) and higher similarity SSIM, where, more closer to 1 indicates the watermarked image is more similar to original one. Among the reasons for this improved imperceptibility, we can cite: the smaller sizes of the shearing filters represented by (eq.2) in comparison with the directional filters used by DWT and CT [22], having the greater windowing flexibility as represented by (eq.3,4) as claimed in [22] that can be utilized and makes possible Incorporating sub-sampling and providing additional directional information. On the other word, by choosing smaller size of filters we can represent edges more precisely and by having greater windowing flexibility we can develop a variety of alternative implementations. This is more noticeable by considering each transform reaction based on image characteristic. For example, DST is more adapted with images having a lot of edges and textured regions (Barbara). For images having smooth areas with a lack of detailed features (Bunny), DST adaptation is still better than CT and DWT. DST also adapted perfectly for images contain mostly high detail textured regions such as Baboon.

1) *Robustness*: To investigate the effects of attacks on the blind watermarking algorithm, different tests were carried out to evaluate its performance. The results are compared against an equivalent DWT and CT blind watermarking schemas, as it was shown that the DWT and CT coefficient distributions can be also expressed using Laplacian model [43]. In order to ensure a fair comparison, given that every method has a

different imperceptibility/robustness balance, all the methods were tuned to provide an approximately 43db PSNR value before the attack [43]. In this regard, the alpha value is set to 0.25 for DWT, 0.2 for CT and 0.2 for DST. During blind detection, the parameters of the proposed model are directly estimated from the DST, CT and DWT coefficients of the watermarked image to fulfil the assumption that watermarked image is close to the original one if strength parameter, α , is much less than 1 ($\alpha \ll 1$). It is to be noted that, in practice, our chosen strength parameter values 0.2 and 0.25 will be acceptable [43] under this approximation while providing acceptable levels of robustness. The embedding was performed in all the coefficients obtained from the 4rd level of decomposition for DST and 3rd level for DWT and CT in order to provide the better resolution and therefore the biggest payload that each method allows.

Table I shows the performance of the false alarm rate (FA), which represents the watermarks that were detected when that watermark was not actually embedded and missed detection (MD), embedded watermarks that were not detected. The results were obtained based on the number of the images where each of these errors occurred. These results were computed by detecting the watermark w chosen from a set of 100 randomly generated watermarks in each image (based on 3000 trials) for the same distribution model with the $P_{FA} = 10^{-3}$. P_{FA} is normally between 10^{-3} to 10^{-12} based on different attacks and applications[43].

TABLE I

FA AND MD FOR THE SAME VALUE OF P_{FA} USING LAPLACIAN MODEL FOR DST, CT AND DWT TRANSFORM BASED ON 30 IMAGES AND 3000 TRIALS

Laplacian Model $P_{FA} = 10^{-3}$	DWT	CT	DST
FA	23	17	13
MD	7	5	1

The effect of five attacks, including Additive White Gaussian Noise (AWGN), Compression, Blurring, Cropping and Rotation are tested on the all 30 watermarked images. For each attack, the detector responses were related to the actual embedded watermark. Table II-VI contains the number of successful detection for most commonly used attacks on each individual watermarked image as well as the global average and average of False Alarm rate and Missed detection. It is worth noting these results were obtained based on 3000 trials.

In the first attack, Gaussian noise is added to the watermarked image with zero mean and standard deviations 0.01, 0.05 and 0.09. It can be possible to add bigger values than 0.09, this will make the image out of focus which would make the quality of the image so distorted that the image would not valuable for the attacker. From these experimental results represented in Table II, it is found that DST provides comparable robustness to its counterpart in terms of AWGN attack, consistently better than CT and DWT.

In the second attack, Gaussian low pass filter is applied to the watermarked image to analyse the effect of blurring using standard deviation varied from 0.3, 0.5 and 0.8 and 3×3 spatial

TABLE II
NUMBER OF SUCCESSFUL DETECTIONS (TRUE POSITIVES) AND AVERAGE OF FA AND MD FOR ALL 30 IMAGES AFTER APPLYING GAUSSIAN NOISE WITH STANDARD DEVIATIONS 0.01, 0.05 AND 0.09 FOR DWT, CT AND DST FOR 3000 TRIALS

Image	DWT			CT			DST		
	0.01	0.05	0.09	0.01	0.05	0.09	0.01	0.05	0.09
Baboon	99	95	90	99	97	94	100	99	97
Barbara	98	95	92	99	97	93	99	97	95
Boat	99	97	94	99	98	97	100	99	97
Bunny	97	94	86	98	94	86	100	97	90
Cameraman	100	98	95	100	98	98	100	98	98
Clock	97	95	91	98	96	91	98	96	92
Elaine	100	99	99	100	100	98	100	99	99
F16	100	97	95	100	98	97	100	97	98
Fingerprint	100	100	98	100	100	99	100	100	99
Flintstone	99	98	96	100	98	96	100	98	98
Flower	99	97	93	99	97	96	100	99	99
Frisco	93	89	82	97	94	91	100	98	94
Girl	100	99	96	99	98	97	100	98	98
House	98	97	95	100	98	97	100	99	98
Jelly Beans	98	95	93	99	98	95	99	97	94
Lake	100	98	95	100	99	98	100	99	99
Lena	96	93	91	100	98	96	100	99	99
Living room	100	98	95	100	98	97	100	99	98
Moon surface	100	99	96	100	99	98	100	100	99
Peppers	99	97	95	100	99	98	99	98	98
Pirate	94	89	85	98	95	93	95	92	89
Scientist	96	93	91	100	99	96	99	98	97
Splash	99	96	94	99	97	93	99	96	94
Straw	93	89	84	98	95	84	97	94	89
Tree	100	98	95	100	99	99	100	100	100
Truck	93	91	88	97	96	89	97	94	91
Walk bridge	97	94	91	100	98	94	100	100	97
Woman-blonde	99	96	91	99	98	95	100	100	99
Woman dark hair	100	98	96	99	99	96	100	99	99
zebra	99	97	94	99	98	95	100	99	98
Average	98.06	95.73	92.53	99.2	97.6	94.86	99.4	97.93	96.56
Average FA	20.03	23.03	25.26	17.56	18.66	21.16	15.0	17.02	18.96
Average MD	7.83	14.23	21.53	6.0	9.4	15.53	5.6	8.1	12.4

filter. From these experimental results represented in Table III, it is found that DST also performs better against blurring attacks in when compared against DWT and CT counterpart.

TABLE III

NUMBER OF SUCCESSFUL DETECTIONS (TRUE POSITIVES) AND AVERAGE OF FA AND MD FOR ALL 30 IMAGES AFTER APPLYING BLURRING ATTACK WITH STANDARD DEVIATIONS 0.3, 0.5 AND 0.8 FOR DWT, CT AND DST FOR 3000 TRIALS

Image	DWT			CT			DST		
	0.3	0.5	0.8	0.3	0.5	0.8	0.3	0.5	0.8
Baboon	99	95	89	100	98	95	99	99	95
Barbara	98	94	87	98	95	91	99	97	94
Boat	100	97	94	100	98	95	100	99	97
Bunny	97	94	89	98	95	91	98	96	94
Cameraman	100	98	95	100	100	97	100	100	98
Clock	100	97	97	99	97	95	99	99	97
Elaine	99	96	94	99	98	95	99	98	98
F16	99	96	93	100	99	97	99	98	96
Fingerprint	98	95	89	100	99	96	99	98	97
Flintstone	100	96	91	100	96	93	100	98	96
Flower	100	94	90	99	96	91	99	97	95
Frisco	98	95	88	98	95	88	97	95	89
Girl	99	96	92	100	97	92	100	99	94
House	100	98	97	100	99	96	100	100	98
Jelly Beans	98	96	92	99	98	93	98	97	94
Lake	98	96	90	100	99	95	100	99	95
Lena	100	96	96	99	96	93	99	97	94
Living room	97	94	86	99	97	92	99	97	94
Moon surface	99	96	91	98	95	89	98	96	91
Peppers	98	96	90	98	96	89	98	95	91
Pirate	99	97	94	99	97	93	98	96	92
Scientist	100	96	92	100	98	92	99	97	92
Splash	97	95	89	98	95	88	98	96	92
Straw	99	96	90	97	94	87	98	95	90
Tree	99	95	89	100	97	94	100	98	95
Truck	98	97	92	98	98	96	99	99	94
Walk bridge	99	98	92	100	97	94	100	99	95
Woman-blonde	99	96	91	99	96	92	100	99	93
Woman dark hair	97	94	88	97	95	91	98	98	94
zebra	99	96	91	98	96	93	99	98	96
Average	98.76	95.83	91.26	99.00	96.86	92.76	99.00	97.63	94.33
Average FA	20.33	23.10	25.03	17.66	18.9	23.46	15.76	17.86	21.43
Average MD	11.1	15.66	19.00	5.46	8.93	16.66	5.36	7.43	13.83

In the third attack, the watermarked images are cropped by cutting off 25% ,50% and 75% of some random part of the images. To extract the watermark, the missing part(s) of the image should be replaced with those parts of the original non watermarked image. The results are shown in Table IV. From these experimental results it is found that DST provides good robustness against cropping attack in comparison with DWT and CT.

TABLE IV
NUMBER OF SUCCESSFUL DETECTIONS (TRUE POSITIVES) AND AVERAGE OF FA AND MD FOR ALL 30 IMAGES AFTER APPLYING CROPPING ATTACK BY CUTTING OFF 25% ,50% AND 75% FOR DWT, CT AND DST FOR 3000 TRIALS

Image	DWT			CT			DST		
	25%	50%	75%	25%	50%	75%	25%	50%	75%
Baboon	97	94	66	97	93	82	98	95	86
Barbara	99	98	82	98	95	89	99	98	91
Boat	98	94	77	100	100	92	99	97	91
Bunny	98	96	75	99	96	81	100	97	83
Cameraman	98	95	69	99	97	84	100	100	88
Clock	95	92	70	97	93	81	100	99	78
Elaine	97	93	68	98	93	86	100	100	94
F16	100	94	70	100	96	89	100	96	91
Fingerprint	100	91	83	99	99	96	100	100	95
Flintstone	100	97	65	100	99	79	100	100	81
Flower	100	96	80	99	97	86	100	98	88
Frisco	100	95	85	100	98	91	100	100	95
Girl	96	93	81	96	96	89	100	100	92
House	97	95	78	100	99	81	100	100	78
Jelly Beans	98	94	92	98	92	92	97	96	93
Lake	99	97	72	100	99	93	100	100	93
Lena	100	97	86	100	100	88	100	100	90
Living room	100	92	84	100	99	93	100	100	96
Moon surface	96	92	76	98	97	92	100	99	89
Peppers	100	97	71	99	97	82	100	98	82
Pirate	95	93	87	100	100	93	100	100	91
Scientist	97	94	89	99	96	89	100	100	89
Splash	100	96	86	99	97	86	100	98	91
Straw	99	97	84	100	96	88	99	97	84
Tree	100	96	73	100	99	71	100	100	73
Truck	100	97	76	100	98	79	100	100	78
Walk bridge	100	95	79	99	99	84	100	100	87
Woman-blonde	98	93	85	97	92	86	98	95	89
Woman dark hair	100	97	98	100	99	97	100	100	98
zebra	99	97	65	98	95	91	99	98	93
Average	98.53	94.9	78.4	98.93	96.76	86.96	99.66	98.8	88.6
Average FA	23.03	24.9	41.06	15.83	18.63	30.13	14.63	16.00	28.6
Average MD	7.5	12.76	35.46	5.73	9.1	24.36	5.16	6.4	22.86

In the fourth attack, the watermarked image is compressed to provide an output quality of 50%, 70% and 90% of the original images. No smoothing is applied. According to Table V, it can be concluded that DST performs very well against JPEG compression in comparison with DWT, but in terms of the severe compression attack CT provides slightly better results than DST.

Finally, the watermarked image is slightly rotated and cropped to discard areas of the image that contain less useful information, such as black areas resulting from the rotation by applying 1, 2, 5 and 7 degrees rotation in a counter clockwise direction. According to Table VI, it can be concluded that DST provides very good robustness against rotation attacks in comparison with DWT and CT. More precisely, this is due to DST improved property to capture more directions and having shift-invariant structure that allows Shearlet to capture the image more efficiently.

Based on the results obtained as described above, it can be concluded that the proposed DST blind watermarking method provides better results, in terms of robustness, compared to DWT and CT watermarking based techniques using the same statistical model (Laplacian). This is due to the fact that DST has a greater windowing flexibility that can be utilized to

TABLE V
NUMBER OF SUCCESSFUL DETECTIONS (TRUE POSITIVES) AND AVERAGE OF FA AND MD FOR ALL 30 IMAGES AFTER APPLYING JPEG ATTACK USING QUALITY OF 50%, 70% AND 90% FOR DWT, CT AND DST FOR 3000 TRIALS

Image	DWT			CT			DST		
	50%	70%	90%	50%	70%	90%	50%	70%	90%
Baboon	87	98	100	91	100	100	88	100	100
Barbara	89	94	98	89	95	99	90	95	99
Boat	81	96	99	83	96	99	83	98	100
Bunny	86	94	99	89	95	99	88	96	99
Cameraman	89	96	100	92	97	99	91	98	100
Clock	78	96	100	84	96	99	81	98	100
Elaine	88	96	98	92	98	100	91	97	100
F16	90	98	98	90	97	99	91	96	99
Fingerprint	78	97	98	89	99	99	88	100	100
Flintstone	89	96	98	94	98	100	92	97	100
Flower	89	92	95	91	98	99	93	100	100
Frisco	77	97	100	87	96	99	86	100	100
Girl	76	93	98	84	99	100	86	100	100
House	87	99	100	91	100	100	87	100	100
Jelly Beans	89	97	99	89	98	100	88	96	98
Lake	84	96	98	83	95	98	84	100	100
Lena	84	97	99	86	97	99	87	98	100
Living room	88	97	99	88	95	99	87	100	100
Moon surface	77	93	96	88	96	98	91	97	98
Peppers	89	97	100	89	98	98	90	98	99
Pirate	83	93	97	85	97	99	83	96	98
Scientist	81	94	97	83	91	98	84	92	97
Splash	85	96	98	86	98	98	87	100	100
Straw	78	92	95	85	93	97	84	94	98
Tree	89	95	99	91	98	99	89	100	100
Truck	86	96	98	89	95	98	88	97	99
Walk bridge	84	98	100	85	96	97	85	99	100
Woman-blonde	87	97	99	88	98	99	89	93	96
Woman dark hair	86	97	100	90	98	99	89	99	100
zebra	88	95	98	91	98	98	88	100	100
Average	84.73	95.73	98.43	88.06	96.83	98.83	87.6	97.8	99.33
Average FA	33.8	25.3	23.63	28.93	19.8	17.03	29.6	17.33	15.13
Average MD	29.2	11.1	7.5	83.8	8.96	5.43	24.46	7.8	3.43

TABLE VI
NUMBER OF SUCCESSFUL DETECTIONS (TRUE POSITIVES) AND AVERAGE OF FA AND MD FOR ALL 30 IMAGES AFTER APPLYING ROTATION ATTACK 1, 2, 5 AND 7 DEGREES FOR DWT,CT AND DST FOR 3000 TRIALS

Image	DWT				CT				DST			
	1	2	5	7	1	2	5	7	1	2	5	7
Baboon	98	96	87	77	100	99	91	84	100	100	94	86
Barbara	95	93	88	70	98	96	91	86	99	98	93	91
Boat	100	98	94	77	100	98	94	82	100	99	97	86
Bunny	98	98	89	83	99	97	89	83	99	98	91	83
Cameraman	99	99	94	88	99	99	94	88	100	99	97	89
Clock	98	97	93	78	98	97	95	83	99	97	95	86
Elaine	98	98	92	85	100	98	97	92	100	100	100	96
F16	98	98	94	89	99	99	96	95	100	99	98	97
Fingerprint	98	97	92	89	100	98	95	90	100	100	98	95
Flintstone	96	94	86	81	100	99	94	89	100	100	96	92
Flower	97	95	88	85	97	95	88	84	99	98	94	89
Frisco	93	93	84	82	97	96	92	84	100	100	95	89
Girl	98	98	93	88	100	100	96	90	100	100	96	93
House	100	100	94	87	100	99	93	85	100	100	97	97
Jelly Beans	99	98	94	85	97	95	89	83	98	98	94	87
Lake	99	98	92	87	96	95	90	86	97	97	93	93
Lena	98	95	91	83	98	94	90	85	98	95	91	85
Living room	96	95	91	89	99	98	96	88	99	98	98	89
Moon surface	98	97	91	82	99	99	96	92	100	99	96	93
Peppers	99	99	94	84	100	100	95	87	100	99	95	89
Pirate	95	92	85	79	97	96	88	82	98	95	89	83
Scientist	97	95	90	75	100	99	95	81	100	100	97	79
Splash	98	98	94	84	99	98	94	89	100	99	96	91
Straw	92	89	78	72	98	97	81	76	100	98	82	78
Tree	100	100	95	87	98	98	95	89	99	99	97	89
Truck	98	95	88	86	98	97	90	85	99	97	91	86
Walk bridge	97	95	85	79	100	99	95	89	99	99	97	94
Woman-blonde	98	97	88	78	98	97	92	80	99	98	94	82
Woman dark hair	99	98	92	89	100	99	96	91	100	99	98	89
zebra	97	94	88	82	98	97	92	87	100	99	94	89
Average	97.53	96.3	90.13	82.66	98.73	97.6	92.63	86.16	99.4	98.56	94.76	88.83
Average FA	23.76	24.2	26.26	36.83	17.1	18.83	23.63	31.43	15.06	16.33	21.13	28.16
Average MD	7.56	10.00	21.43	32.36	5.86	7.53	17.06	26.46	3.2	6.06	12.83	22.26

capture the image characteristics like curve and edges. This is more noticeable by considering each transform reaction based on image characteristic. For example, DST is more adapted with images having a lot of edges and textured regions (Barbara). For images having smooth areas with a lack of detailed features (Bunny), DST adaptation is still better than DWT and CT. DST also adapted perfectly for images contain mostly high detail textured regions such as Baboon.

V. CONCLUSION

In this paper we have proposed a novel blind watermarking framework based on the discrete Shearlet transform for blind image watermarking. This idea is justified through its structure and potential to provide higher payload and better imperceptibility. A blind system framework was implemented to test the suitability of DST for watermarking based on decision theory. This system presents theoretical novelties in the lter structure and the probabilistic model in order to allow DST to be integrated. As a main advantage this blind watermarking method does not require the transmission of the original clean image. To achieve this, the distribution of the Discrete Shearlet Transforms coefficients for different subbands and resolutions are investigated. Thus, the PDF obtained from DST coefficients is modeled using a Laplacian channel. This model has proved to be effective and simpler, allowing the corresponding mathematical description of the full framework. Finally, a maximum likelihood detection scheme based on Laplacian modelling of the DST coefficients is implemented under a hypothesis condition using detection rules based on the Neyman-Pearson criterion in order to improve the robustness as well as adapting the watermark strength to the host image by considering the visual sensitivity. The proposed method is less sensitive to fine parameter tuning in comparison with non-blind methods [33], i.e. parameters can remain unchanged even under different attacks and the original image is not required during the detection stage. From the experimental results it is found that the DST based embedding provides a good imperceptibility and an improved payload as predicted. In terms of robustness, the results demonstrate superior robustness against common image processing manipulations compared to DWT and CT. This is more obvious in compression, noise and rotation attacks.

REFERENCES

- [1] A. Al-Gindy, A. M. Zorrilla, and B. Beyrouiti, "Dct watermarking technique using image normalization," in *Developments of E-Systems Engineering (DeSE), 2015 International Conference on*. IEEE, 2015, pp. 145–149.
- [2] C. Namratha and S. Kareemulla, "Multi image watermarking using lagrangian support vector regression," in *Recent Trends in Electronics, Information & Communication Technology (RTEICT), IEEE International Conference on*. IEEE, 2016, pp. 513–516.
- [3] H. Sadreazami, M. O. Ahmad, and M. Swamy, "Multiplicative watermark decoder in contourlet domain using the normal inverse gaussian distribution," *IEEE Transactions on Multimedia*, vol. 18, no. 2, pp. 196–207, 2016.
- [4] I. Cox, M. Miller, J. Bloom, J. Fridrich, and T. Kalker, *Digital watermarking and steganography*. Morgan Kaufmann, 2007.
- [5] T. Chen and H. Lu, "Robust spatial lsb watermarking of color images against jpeg compression," in *Advanced Computational Intelligence (ICACI), 2012 IEEE Fifth International Conference on*. IEEE, 2012, pp. 872–875.
- [6] C.-M. Pun, "A novel dft-based digital watermarking system for images," in *2006 8th international Conference on Signal Processing*, vol. 2. IEEE, 2006.
- [7] T. K. Das, S. Maitra, and J. Zhou, "Cryptanalysis of chu's dct based watermarking scheme," *IEEE transactions on multimedia*, vol. 8, no. 3, pp. 629–632, 2006.
- [8] G. Tianming and W. Yanjie, "Dwt-based digital image watermarking algorithm," in *Electronic Measurement & Instruments (ICEMI), 2011 10th International Conference on*, vol. 3. IEEE, 2011, pp. 163–166.
- [9] S. R. Chalamala, K. R. Kakkirala, and R. G. B. Mallikarjuna, "Analysis of wavelet and contourlet transform based image watermarking techniques," in *Advance Computing Conference (IACC), 2014 IEEE International*. IEEE, 2014, pp. 1122–1126.
- [10] L. Ghouti, A. Bouridane, M. K. Ibrahim, and S. Boussakta, "Digital image watermarking using balanced multiwavelets," *IEEE transactions on signal processing*, vol. 54, no. 4, pp. 1519–1536, 2006.
- [11] J. Ruanaidh, W. Dowling, and F. M. Boland, "Phase watermarking of digital images," in *Image Processing, 1996. Proceedings., International Conference on*, vol. 3. IEEE, 1996, pp. 239–242.
- [12] J. Zou, X. Yang, and S. Niu, "A novel robust watermarking method for certificates based on dft and hough transforms," in *Intelligent Information Hiding and Multimedia Signal Processing (IHH-MSP), 2010 Sixth International Conference on*. IEEE, 2010, pp. 438–441.
- [13] I. J. Cox, J. Kilian, F. T. Leighton, and T. Shamoon, "Secure spread spectrum watermarking for multimedia," *IEEE transactions on image processing*, vol. 6, no. 12, pp. 1673–1687, 1997.
- [14] F. Huang and Z.-H. Guan, "A hybrid svd-dct watermarking method based on lpsnr," *Pattern Recognition Letters*, vol. 25, no. 15, pp. 1769–1775, 2004.
- [15] W. Huai-bin, Y. Hong-liang, W. Chun-dong, and W. Shao-ming, "A new watermarking algorithm based on dct and dwt fusion," in *Electrical and Control Engineering (ICECE), 2010 International Conference on*. IEEE, 2010, pp. 2614–2617.
- [16] A. Furqan and M. Kumar, "Study and analysis of robust dwt-svd domain based digital image watermarking technique using matlab," in *Computational Intelligence & Communication Technology (CICT), 2015 IEEE International Conference on*. IEEE, 2015, pp. 638–644.
- [17] T. Huynh-The, S. Lee, P.-C. Hieu, and T. Le-Tien, "A dwt-based image watermarking approach using quantization on filtered blocks," in *2014 International Conference on Advanced Technologies for Communications (ATC 2014)*. IEEE, 2014, pp. 280–285.
- [18] I. W. Selesnick, R. G. Baraniuk, and N. C. Kingsbury, "The dual-tree complex wavelet transform," *IEEE signal processing magazine*, vol. 22, no. 6, pp. 123–151, 2005.
- [19] A. I. Thompson, A. Bouridane, F. Kurugollu, and C. Tanougast, "Watermarking for multimedia security using complex wavelets," *Journal of Multimedia*, vol. 5, no. 5, pp. 443–457, 2010.
- [20] J.-L. Starck, E. J. Candès, and D. L. Donoho, "The curvelet transform for image denoising," *IEEE Transactions on image processing*, vol. 11, no. 6, pp. 670–684, 2002.
- [21] M. N. Do and M. Vetterli, "The contourlet transform: an efficient directional multiresolution image representation," *IEEE Transactions on image processing*, vol. 14, no. 12, pp. 2091–2106, 2005.
- [22] G. Easley, D. Labate, and W.-Q. Lim, "Sparse directional image representations using the discrete shearlet transform," *Applied and Computational Harmonic Analysis*, vol. 25, no. 1, pp. 25–46, 2008.
- [23] H. Shan, J. Ma, and H. Yang, "Comparisons of wavelets, contourlets and curvelets in seismic denoising," *Journal of Applied Geophysics*, vol. 69, no. 2, pp. 103–115, 2009.
- [24] S. Zaboli and M. S. Moin, "Cew: A non-blind adaptive image watermarking approach based on entropy in contourlet domain," in *2007 IEEE International Symposium on Industrial Electronics*. IEEE, 2007, pp. 1687–1692.
- [25] P. Mitra, R. Gunjan, and M. S. Gaur, "A multi-resolution watermarking based on contourlet transform using svd and qr decomposition," in *Recent Advances in Computing and Software Systems (RACSS), 2012 International Conference on*. IEEE, 2012, pp. 135–140.
- [26] Q. Cheng and T. S. Huang, "Blind digital watermarking for images and videos and performance analysis," in *Multimedia and Expo, 2000. ICME 2000. 2000 IEEE International Conference on*, vol. 1. IEEE, 2000, pp. 389–392.
- [27] M. Barni, F. Bartolini, A. De Rosa, and A. Piva, "A new decoder for the optimum recovery of nonadditive watermarks," *IEEE Transactions on Image Processing*, vol. 10, no. 5, pp. 755–766, 2001.
- [28] T. M. Ng and H. K. Garg, "Wavelet domain watermarking using maximum-likelihood detection," in *Electronic Imaging 2004*. International Society for Optics and Photonics, 2004, pp. 816–826.
- [29] T. Ng and H. Garg, "Maximum-likelihood detection in dwt domain image watermarking using laplacian modeling," *IEEE Signal Processing Letters*, vol. 12, no. 4, pp. 285–288, 2005.
- [30] W.-Q. Lim, "The discrete shearlet transform: A new directional transform and compactly supported shearlet frames," *IEEE Transactions on Image Processing*, vol. 19, no. 5, pp. 1166–1180, 2010.
- [31] G. Kutyniok et al., *Shearlets: Multiscale analysis for multivariate data*. Springer Science & Business Media, 2012.

- 1
2 [32] B. Ahmaderahgi, F. Kurugollu, P. Milligan, and A. Bouridane, "Spread
3 spectrum image watermarking based on the discrete shearlet transform,"
4 in *Visual Information Processing (EUVIP), 2013 4th European Work-*
5 *shop on.* IEEE, 2013, pp. 178–183.
- 6 [33] B. Ahmaderahgi, J. M. Del Rincon, F. Kurugollu, and A. Bouridane,
7 "Perceptual watermarking for discrete shearlet transform," in *Visual*
8 *Information Processing (EUVIP), 2014 5th European Workshop on.*
9 IEEE, 2014, pp. 1–6.
- 10 [34] W.-Q. Lim, "Nonseparable shearlet transform," *IEEE transactions on*
11 *image processing*, vol. 22, no. 5, pp. 2056–2065, 2013.
- 12 [35] Y. Teng, F. Liu, and R. Wu, "The research of image detail en-
13 hancement algorithm with laplacian pyramid," in *Green Computing*
14 *and Communications (GreenCom), 2013 IEEE and Internet of Things*
15 *(iThings/CPSCom), IEEE International Conference on and IEEE Cyber,*
16 *Physical and Social Computing.* IEEE, 2013, pp. 2205–2209.
- 17 [36] S. Yi, D. Labate, G. R. Easley, and H. Krim, "A shearlet approach to
18 edge analysis and detection," *IEEE Transactions on Image Processing*,
19 vol. 18, no. 5, pp. 929–941, 2009.
- 20 [37] Y. Chen and J. Chen, "A novel blind watermarking scheme based on
21 neural networks for image," in *Information Theory and Information*
22 *Security (ICITIS), 2010 IEEE International Conference on.* IEEE, 2010,
23 pp. 548–552.
- 24 [38] T. S. Ferguson, *Mathematical statistics: A decision theoretic approach.*
25 Academic press, 2014, vol. 1.
- 26 [39] O. E. Barndorff-Nielsen, "Normal inverse gaussian distributions and
27 stochastic volatility modelling," *Scandinavian Journal of statistics*,
28 vol. 24, no. 1, pp. 1–13, 1997.
- 29 [40] M. Barni and F. Bartolini, *Watermarking systems engineering: enabling*
30 *digital assets security and other applications.* CRC Press, 2004.
- 31 [41] Q. Cheng and T. S. Huang, "Robust optimum detection of transform
32 domain multiplicative watermarks," *IEEE Transactions on Signal Pro-*
33 *cessing*, vol. 51, no. 4, pp. 906–924, 2003.
- 34 [42] R. Gonzalez, R. Woods, and S. Eddins, "image Database," [http://www.
35 imageprocessingplace.com/root_files_V3/image_databases.html/](http://www.imageprocessingplace.com/root_files_V3/image_databases.html/), 2004,
36 [Online].
- 37 [43] K. Zebbiche, F. Khelifi, and A. Bouridane, "Maximum-likelihood water-
38 marking detection on fingerprint images," in *Bio-inspired, Learning, and*
39 *Intelligent Systems for Security, 2007. BLISS 2007. ECSIS Symposium*
40 *on.* IEEE, 2007, pp. 15–18.
- 41 [44] Y. A. Al-Najjar, D. C. Soong *et al.*, "Comparison of image quality
42 assessment: Psnr, hvs, ssim, uqi," *International Journal of Scientific*
43 *& Engineering Research*, vol. 3, no. 8, p. 1, 2012.
- 44
45
46
47
48
49
50
51
52
53
54
55
56
57
58
59
60