



Implications of Zika virus and congenital Zika syndrome for the number of live births in Brazil

The Harvard community has made this article openly available. [Please share](#) how this access benefits you. Your story matters

Citation	Castro, Marcia C., Qiuyi C. Han, Lucas R. Carvalho, Cesar G. Victora, and Giovanny V. A. França. 2018. "Implications of Zika Virus and Congenital Zika Syndrome for the Number of Live Births in Brazil." <i>Proceedings of the National Academy of Sciences</i> 115 (24) (May 29): 6177–6182. doi:10.1073/pnas.1718476115.
Published Version	doi:10.1073/pnas.1718476115
Citable link	http://nrs.harvard.edu/urn-3:HUL.InstRepos:37221754
Terms of Use	This article was downloaded from Harvard University's DASH repository, and is made available under the terms and conditions applicable to Other Posted Material, as set forth at http://nrs.harvard.edu/urn-3:HUL.InstRepos:dash.current.terms-of-use#LAA

Implications of Zika virus and congenital Zika syndrome for the number of live births in Brazil

Marcia C Castro¹, Qiuyi Han¹, Lucas Carvalho², Cesar Victora³, Giovanni França⁴

¹Harvard University, ²Federal University of Minas Gerais, ³Federal University of Pelotas, ⁴Brazilian Ministry of Health

Submitted to Proceedings of the National Academy of Sciences of the United States of America

An increase in microcephaly, associated with an epidemic of Zika virus (ZIKV) in Brazil, prompted the World Health Organization to declare a Public Health Emergency of International Concern in Feb/2016. While knowledge on biological and epidemiological aspects of ZIKV has advanced, demographic impacts remain poorly understood. This study uses time series analysis to assess the impact of ZIKV on births. Data on births, fetal deaths, and hospitalizations due to abortion complications, for each Brazilian state, from 2010-2016, were used. Forecasts for Sept/2015-Dec/2016 showed that 119,095 fewer births than expected were observed, particularly after Apr/2016, demonstrating a link between publicity associated with ZIKV and decline in births. No significant changes were observed in fetal death rates. Although no significant increases in hospitalizations were forecasted, after the ZIKV and microcephaly outbreaks hospitalizations happened earlier in the gestational period in more than half of the Brazilian states. We argue that postponement of pregnancy and an increase in abortions contributed to the decline in births after Apr/2016. Also, it is likely that an increase in safe abortions happened, albeit selective by socioeconomic status. Thus, the ZIKV epidemic resulted in a generation of congenital Zika syndrome (CZS) babies that reflect and exacerbate regional and social inequalities. Since ZIKV transmission has declined, it is unlikely that reductions in births will continue. But the possibility of a new epidemic is real. There is a need to address gaps in reproductive health and rights, and to understand the risk of CZS in order to better inform conception decisions.

Zika Virus | Congenital Zika Syndrome | Brazil | Births | Abortion

Since late 2014, reports of a new exanthematic disease were issued in the Northeast region of Brazil. In early 2015, an outbreak of Zika virus (ZIKV – an arbovirus) was reported in the region, following a probable introduction in 2013 (1-3). By October 2015, an unusual increase in microcephaly cases among infants occurred in this region, and a possible association with ZIKV was suggested (2, 4, 5). As microcephaly cases increased steadily, the Brazilian Ministry of Health declared a state of health emergency in November 2015, the Pan American Health Organization (PAHO) issued an epidemiologic alert regarding ZIKV in Latin America on the same month, and on February 1, 2016, the World Health Organization (WHO) declared clusters of microcephaly cases and other neurological disorders reported in Brazil as a Public Health Emergency of International Concern (PHEIC) (6). The PHEIC was lifted on November 18, and while worldwide public attention has waned since then (7), the WHO included ZIKV as one of the priority diseases for action to prevent epidemics (8). In May 11, 2017, Brazil lifted the state of emergency.

Evidence of a causal link between ZIKV and microcephaly steadily accumulated since November 2015 (2, 9-14), and was formally accepted in April 2016 (15-17). Yet, microcephaly is just one of the many ZIKV-related birth complications, now referred to as congenital Zika syndrome (CZS) (18). About 20% of the children born with CZS have normal head sizes (19), and children born without any abnormality were later found to have developed brain damage and developmental problems (20). In addition,

ZIKV infections during any trimester of pregnancy may result in CZS, even if asymptomatic (21).

The number of ZIKV cases observed in Brazil since the 2015 outbreak carries much uncertainty. Mandatory notification of ZIKV commenced in February 2016, however, some of the reported ZIKV cases were not confirmed, and misdiagnoses between dengue, ZIKV, and chikungunya might have occurred early in the epidemic. Also, accurate diagnosis with laboratory tests was challenging due to the short viremia period, and to cross-reactivity among dengue and ZIKV in serodiagnostics (22, 23). A recent analysis of suspected urban arboviruses reported in 2015 and 2016 suggests that 1,673,272 ZIKV cases occurred in 2015 and 2016, 41,473 (2.5%) of them among pregnant women (24). Two waves of ZIKV infection (and thus of ZIKV infection during pregnancy) were observed in all regions in Brazil: the first in 2015 (March to July), and the second from September 2015 to August 2016 (24).

As for CZS, 2,751 cases have been confirmed from 2015 to 2017 (as of August 26, 2017). Although autochthonous transmission of ZIKV was confirmed in all Brazilian states, the geographical distribution of CZS cases was not uniform (Fig. 1). The Northeast region bore the heaviest burden, 69.5% of all CZS cases, although only 15.4% of the confirmed and 26.6% of the suspected ZIKV cases among pregnant women were recorded in that region. The peak in CZS per 10,000 live births in the Northeast was observed in December 2015 (56.7), but only in August 2016, and at much lower levels, in the North, Center-West, and Southeast regions (7.8, 15.4, and 5.5, respectively). Between 2015 and 2017 there were 86.1 CZS cases per 1,000 pregnant women with a suspected ZIKV infection, ranging from

Significance

Zika virus (ZIKV) was discovered 70 years ago, and since then small isolated outbreaks occurred without major complications being reported. When ZIKV hit Brazil, however, a public health emergency was declared given its link with microcephaly. Knowledge on ZIKV has advanced, but demographic impacts remain poorly understood. This study uses data from Brazil to assess whether a decline in births occurred after the onset of ZIKV. Forecasts show significant birth declines, particularly after Apr/2016. No significant changes in fetal death rates, and no pattern of increase in hospitalizations due to abortion complications were observed, although hospitalizations occurred later in some states. We argue that postponement of pregnancy and abortions, primarily likely affected fertility, with implications for women's reproductive health.

Reserved for Publication Footnotes

137
138
139
140
141
142
143
144
145
146
147
148
149
150
151
152
153
154
155
156
157
158
159
160
161
162
163
164
165
166
167
168
169
170
171
172
173
174
175
176
177
178
179
180
181
182
183
184
185
186
187
188
189
190
191
192
193
194
195
196
197
198
199
200
201
202
203
204

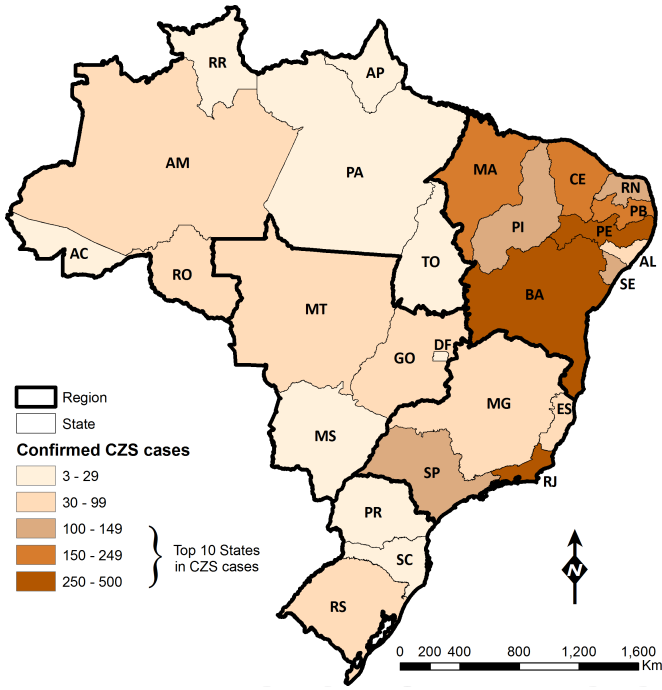


Fig. 1. Confirmed Congenital Zika Syndrome (CZS) cases from 2015 to 2018 (as of March 3, 2018), by state. States with 100 or more CZS cases ranked among the top ten. Starting from the southern portion of the map, the regional division is as follows: South – Paraná (PR), Santa Catarina (SC), and Rio Grande do Sul (RS); Southeast – Espírito Santo (ES), Minas Gerais (MG), Rio de Janeiro (RJ), and São Paulo (SP); Center-West – Goiás (GO), Mato Grosso do Sul (MS), Mato Grosso (MT), and Distrito Federal (DF); Northeast – Alagoas (AL), Bahia (BA), Ceará (CE), Maranhão (MA), Paraíba (PB), Pernambuco (PE), Piauí (PI), Rio Grande do Norte (RN), and Sergipe (SE); and North – Acre (AC), Amapá (AP), Amazonas (AM), Pará (PA), Roraima (RR), Rondônia (RO), and Tocantins (TO).

6.1 in Paraná state (South region) to 758.8 in Paraíba (Northeast region) (24). Cases have waned since May 2016, and of the total confirmed CZS cases since 2015, only 76 were born in 2017 (as of August 26).

The link between ZIKV and microcephaly spurred some government leaders in Latin America to suggest that women should postpone having babies for a few years (25), ignoring the fact that, in the region, more than half of the pregnancies are not intended (26); rates of sexual violence are high (27); and while abortion is heavily legally restricted, women seek clandestine abortions, or self-induce the termination of pregnancy, mostly under unsafe conditions (28). In Brazil, for example, abortion is only allowed to save a woman's life or in cases of rape. Yet, according to the 2013 National Health Survey, an estimated 1.1 million induced abortions were practiced by women aged 18-49, 39% of them in the Northeast region (where ZIKV and associated CZS hit the hardest) (29). Women of low socioeconomic status are those most often exposed to an unsafe procedure and to its harmful consequences (30). It is estimated that about half of the women who undergo an induced abortion require hospitalization due to complications following the procedure (30, 31), a concern for women's reproductive health and rights. In the absence of a treatment that prevents ZIKV from crossing the placenta, and of a legal abortion policy, women have no legal framework to exercise the choice of continuing or terminating a pregnancy following a ZIKV infection and an ultrasound showing problems in fetal development; she would have to carry on the pregnancy and face the risk of delivering a child with congenital problems, or put her own health at risk by inducing an abortion (25).

In such a scenario, we hypothesize that the ZIKV epidemic could have led to reductions in the number of live births due to three reasons: (i) an above average fetal death rate following a ZIKV infection during pregnancy; (ii) couples/women who want to become pregnant may decide to postpone pregnancy based on their perception of risk of having a child with congenital malformations; and (iii) couples/women choose to terminate the pregnancy given a confirmed or suspected malformation of the fetus following a ZIKV infection. With regards to fetal death, current evidence of higher rates among pregnant women who had a ZIKV infection, based on cohort studies of pregnant women is conflicting (21, 32, 33). Also, preliminary results from different surveys conducted in 2016 suggest that women were postponing pregnancy to avoid ZIKV-related birth defects (34, 35). As for abortions, there is evidence that the demand for abortion medications (mifepristone and misoprostol) has increased substantially in Brazil after the onset of the ZIKV epidemic (36). In the case of an elective pregnancy termination, the ZIKV outbreak could affect the timing of the procedure, with implications for women's health. On the one hand, couples/women may opt for an abortion very early in the gestation after a confirmed or suspected ZIKV infection, and/or widespread panic and misinformation that exacerbates the perception of risk, particularly in the initial phase of the epidemic. On the other hand, couples/women may opt to have an abortion late in the gestational period after a fetal malformation is detected through ultrasound examination.

We also postulate that the causes of reductions in the number of births vary by time (*SI Appendix, Fig. S1*). First, we consider an acute phase when the cases of CZS are on the rise, and when the novelty of the disease as well as its congenital effects get constant attention in the media (e.g., radio, TV, billboards, social networks). During this phase, observed CZS cases were conceived before the association between ZIKV and microcephaly was suspected. Therefore, we assume that any changes in the number of live births during this phase could result only from above average fetal deaths and abortions, since couples/women conceived before the harmful consequences of ZIKV became known. Second, we consider a transition phase when ZIKV cases are declining, but couples'/women's perception regarding the risk of having a child with CZS is still very high, followed by a third phase when ZIKV remains endemic but with very low transmission, and thus with a small number of CZS cases recorded. During the second and third phases, declines in the number of live births could result from any of the three reasons hypothesized above. Geographically, we expect that any changes in births due to ZIKV would be widespread early in the epidemic, becoming more focal as cases decline (*SI Appendix, Fig. S1*).

In this study, by integrating subnational (state-level) and monthly data on births, fetal deaths, abortion-related hospitalizations, and female population aged 10-49 years we assessed whether a significant decline in the number of live births was observed after Aug/2015, and whether the magnitude of the decline varied over time and across states. We also investigated whether significant changes were observed in fetal death rates, and assessed if the cross-correlation between births and hospitalizations due to abortion complications changed after Aug/2015. Since the geographical distribution of ZIKV and CZS were not homogeneous (Fig. 1), we assessed if reductions in the number of live births were concentrated in areas mostly affected by the epidemic.

Results

Time series of monthly births, fetal deaths, and hospital admissions of women due to abortion complications were extracted from administrative databases from 2010 to 2016, and forecasts of the general fertility rate (GFR), of the fetal death rate, and of the rate of hospitalizations due to abortion were calculated

205
206
207
208
209
210
211
212
213
214
215
216
217
218
219
220
221
222
223
224
225
226
227
228
229
230
231
232
233
234
235
236
237
238
239
240
241
242
243
244
245
246
247
248
249
250
251
252
253
254
255
256
257
258
259
260
261
262
263
264
265
266
267
268
269
270
271
272

273
274
275
276
277
278
279
280
281
282
283
284
285
286
287
288
289
290
291
292
293
294
295
296
297
298
299
300
301
302
303
304
305
306
307
308
309
310
311
312
313
314
315
316
317
318
319
320
321
322
323
324
325
326
327
328
329
330
331
332
333
334
335
336
337
338
339
340

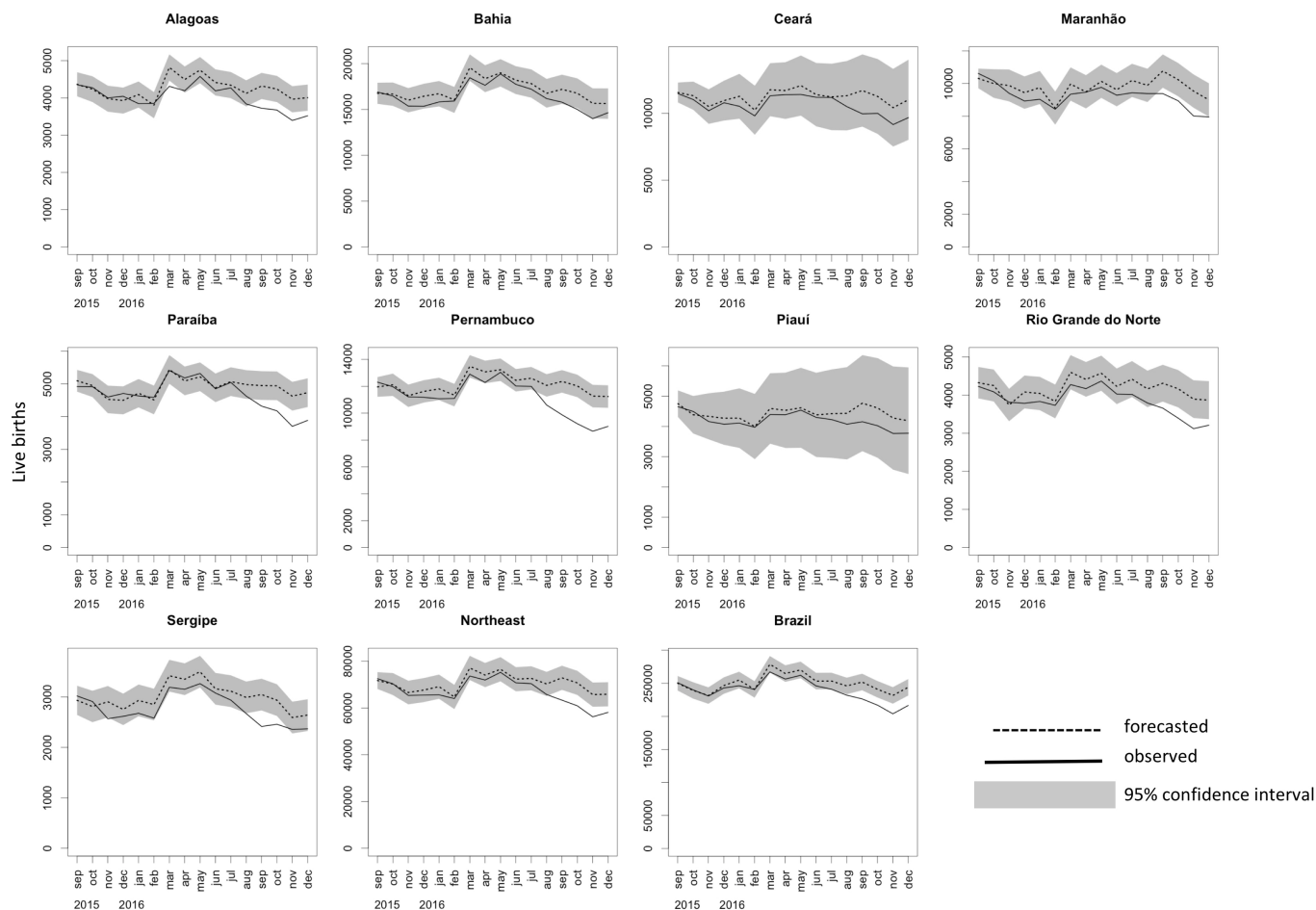


Fig. 2. Observed and forecasted monthly live births, Sept/2015 to Dec/2016. Forecast based on ARIMA models fit to the general fertility rate; forecasted GFRs were converted into number of live births considering the female population aged 10-49 years (*Materials and Methods*). Grey area in the graphs corresponds to the 95% confidence interval of the forecast. Graphs show the states that compose the Northeast region, the total for the Northeast region, and the total for the remaining states in Brazil.

for the period from Sept/2015 to Dec/2016 (*Materials and Methods*). A total of 3,820,304 births were reported in Brazil from Sept/2015 to Dec/2016, while our analysis forecasted 3,998,216 births (*SI Appendix, Table S1*). However, the difference between forecasted and reported births was within the 95% confidence interval in Sept/2015-Jul/2016 (*SI Appendix, Table S2*). During all other months of the forecasted period, the difference amounted to 119,065 births. Thus, for every 100 births registered in Brazil in 2016, 4.2 were forecasted but not observed.

Individual state forecasts showed that, among the nine states of the Northeast region, only in Ceará and Piauí the observed number of births fell inside of the forecasted confidence interval (Fig. 2). At a 5% significance level, the states in the Northeast region had 36,546 fewer births than expected, all in 2016 (*SI Appendix, Table S2*). The deficit in births had important geographical differences. In Paraíba, for every 100 births observed in 2016, 5.7 were forecasted but not observed; in Pernambuco and Rio de Janeiro these figures were 8.8 and 7.2, respectively, while in Bahia it was only 1.8. Regionally, this ratio was 4.6 for the Northeast, 5.3 for the Southeast, and 2.3 for the North. The correlation coefficient between the deficit in live births and CZS cases by state was 0.64 for the states in the Northeast region, and 0.36 for all states but those in the Northeast region (none significant at the 5% level). Weighted linear regression between the two variables (with women aged 10-49 years in 2016 as the weights) showed no significant effects (*SI Appendix, Fig. S2 and Table S3*).

From Sept/2015 to Dec/2016, 257,645 hospital admissions due to abortion complications were reported in Brazil, while our model forecasted 274,615 during the same period; of this difference, only 5,986 were significant (*SI Appendix, Fig. S3*). Individual state forecast indicated a pattern of fewer hospitalizations in several states, particularly in the Northeast and Southeast regions in 2016 (*SI Appendix, Table S4*). The cross-correlation (*SI Appendix*) between births and hospitalizations due to abortion complications pointed to significant changes in the time lag (*SI Appendix, Table S5*). Specifically, considering the data for Brazil, while in the period Jan/2010-Aug/2015 hospitalizations due to abortion complications were correlated with live births seven months afterwards, in the period Sept/2015-Dec/2016 the time lag decreased to six months. This pattern of later hospitalizations in the gestational period was observed in 14 states, with time lags changing from seven to six months in 11 states, from six to five months in two states, and from seven to five months in one state. All regions observed changes, except the North.

Time series analysis of fetal death rates indicated no significant changes for Brazil, regions and states. For Brazil, rates were consistently around 11 deaths per 1,000 live births. Since the year 2000, fetal death rates were consistently higher in the Northeast region (around 13 per 1,000 live births), a pattern that remained the same after the onset of the ZIKV epidemic. Bahia, the state with the largest number of CZS cases, regularly recorded the highest fetal death rates (around 15 per 1,000 live births) (*SI Appendix, Table S6*).

341
342
343
344
345
346
347
348
349
350
351
352
353
354
355
356
357
358
359
360
361
362
363
364
365
366
367
368
369
370
371
372
373
374
375
376
377
378
379
380
381
382
383
384
385
386
387
388
389
390
391
392
393
394
395
396
397
398
399
400
401
402
403
404
405
406
407
408

Discussion

This study provides a comprehensive analysis of the impact of ZIKV on live births in Brazil. Our analysis was based on monthly data from Jan/2010 to Dec/2016 for Brazil and for each of the 26 states and the federal district. Forecasts of the GFR for the period from Sept/2015 to Dec/2016 demonstrated that fewer births than expected were observed after the emergence of ZIKV in Brazil. Despite the decline in births, no significant increases in fetal death rates were observed, and hospitalizations due to abortion complications were fewer than expected. However, our results show that hospitalizations happened at later gestational ages after the ZIKV and microcephaly outbreaks.

Guided by our proposed framework (*SI Appendix, Fig. S1*), our results demonstrate that postponement of pregnancy may have contributed to the decline in births after Apr/2016. These findings are supported by a survey conducted in all capital cities of the Northeast region between March 30th and June 3rd of 2016, which showed that about 18% of the women using contraception did so because of the ZIKV epidemic (34). Fetal deaths did not seem to have played a major role, corroborating findings of a cohort study of women in Rio de Janeiro (21). Also, the fact that hospitalizations due to abortion complications were fewer than expected cannot rule out a possible increase in abortions. All pregnancy terminations that were conducted safely would not result in a hospitalization, and thus would not be captured by routine administrative data collection. Indeed, a large increase in online requests for abortion medications in Brazil was reported between Nov/2015 and Mar/2016 – after PAHO issued an epidemiological alert (36), and drug-induced abortions carry a very small risk of complications (37). As for the spatial extent of the birth declines, our results indicate that after April 2016 they were not as concentrated in the ZIKV hardest hit areas as we initially hypothesized.

We urge caution in the interpretation of these results, as well as on any attempt to assess declines in births due to ZIKV. By no means should one claim that all declines in births were a result of the ZIKV outbreak, and we offer four reasons why. First, economic crises can affect the decision to have a child (38-40), and since January 2015 unemployment rates in Brazil have been increasing; the annual average unemployment rate was 8.5, 11.5, and 12.7 in 2015, 2016, and 2017, respectively, reaching a peak of 13.7 in March 2017 (41). Second, current legislation states that births should be reported up to 60 days after birth. However, longer lag periods may occur, in which case the use of incomplete data would bias the analysis (more specifically, overestimate the difference between forecasted and observed births). We limited our analysis to births reported until Dec/2016, since later data were still incomplete. Thus, although a few events in the studied period may be missing, we expect this number to be small and thus to not change our results. Third, the quality (completeness and accuracy) of administrative data varies (*Materials and Methods*). However, given the increased attention to track pregnancies and births for CZS, particularly during the peak of the ZIKV epidemic, it is expected that, at that time, underreporting was lower than usual. Lastly, part of the decline may result from lower desired fertility (irrespective of ZIKV). However, based on the Brazilian experience (42), it is unlikely that this factor alone may account for the observed deficit in births during the forecasted period.

Our results raise five important questions. First, will the decline persist over time and affect the total fertility rate (TFR)? Fertility in Brazil has rapidly declined since the 1960s, across all socioeconomic strata, and in 2010 the TFR was 1.9, below replacement level (43). Approximately 3 million births are observed annually, 39% in the Southeast region - home to megacities such as São Paulo and Rio de Janeiro, and 28% in the Northeast. We argue that since ZIKV transmission has declined, and the

attention has waned, it is unlikely that reductions in births will persist over time. Instead, we expect that the decline in births will characterize a tempo distortion in period fertility (44). While this could be an issue for women in the older age range of the reproductive period, only 13% of the fertility rate in Brazil is concentrated above age 35.

Second, was there an increase in seeking behavior for a safe abortion? There are no systematic data to answer this question. Safe procedures, either medical or surgical, can only be estimated through self-reported surveys. In addition, unsafe procedures that result in hospitalizations could be underreported to protect the woman or the doctor from legal complications. However, our results revealed significant declines in hospitalizations due to abortion complications in several states, which could suggest that safer procedures were sought. Data showing a spike on requests for abortion medications suggest an increase in safe procedures following the ZIKV epidemic (36). This question needs to be reassessed and quantified based on indirect estimates (45) and special surveys.

Third, was there a selection in who decided to perform an abortion? About 83% of women who had a child with CZS in Brazil were non-whites (24), whereas 49.7% of the female Brazilian population is non-white (in Brazil, the standard racial categories are white, black, brown, yellow, and indigenous). In the absence of selective abortion and contraception, this would only be possible if non-whites were under a higher risk of a ZIKV infection. Although poor housing conditions, precarious infrastructure, and low socioeconomic status are factors often associated with higher transmission of *Ae. Aegypti*-related diseases (46), health care provided by the private sector is largely underreported in the Brazilian National Notifiable Diseases Information System (SINAN), despite the fact that notification is mandatory (47). This sub-notification, however, cannot explain the racial difference in mothers who had babies with CZS since the birth registration system captures vital events irrespective of delivery location. Also, the use of contraception in Brazil is high (around 80%), irrespective of region and race (48). Therefore, we argue that the higher percentage of babies with CZS born to non-white mothers reflects a lower number of safe abortions among non-whites. As a result, the ZIKV epidemic resulted in a generation of CZS babies that reflect and exacerbate well documented regional and social inequalities in Brazil (49).

Fourth, are there specific factors prevalent in the Northeast region or among certain populations that increased the severity of ZIKV during pregnancy? It is possible that the observed burden of CZS in the Northeast and among the non-white population is not solely a result of differentiated use of abortion and contraception, but of other conditions that could alter the risk of a ZIKV infection. While this issue is being investigated by different research groups, currently there is no evidence that such factors exist. Also, although some cases of CZS complications only manifest later in infancy (20, 50), it is unlikely that those babies are predominately outside the Northeast.

Fifth, in the absence of a vaccine, are there ideal temporal windows of conception to minimize the risk of CZS? Birth seasonality is observed in most human populations (51). In Brazil, the peak of births consistently occurs between March and May, corresponding to conceptions during the winter months of June to August, and a secondary peak is observed in September (conceptions in December); the valley happens from October to December, associated with conceptions during the summer months of January to March (52). Similarly, ZIKV transmission follows a seasonal pattern common to arboviruses, with peaks usually observed during warmer and wetter months (53), which in Brazil ranges from December to April. Thus, the peak of conception coincides with the low transmission season of ZIKV, but part of the second and all third trimester would overlap the

545 favorable months for *Ae. Aegypti*. In contrast, conceptions during
546 the summer months expose the pregnant woman to an infection
547 in the first trimester, part of the second, and the later part of the
548 third. That pattern is reflected on the curves of CZS per 10,000
549 births, where peaks were observed in November for Brazil, and in
550 December for the Northeast region (24). As a result, the months
551 when fewer births are often observed were those with higher risk
552 of delivering a baby with CZS, given a higher exposure to ZIKV
553 during conception. Although ZIKV transmission in Brazil has
554 been drastically reduced, a new wave of transmission is possible.
555 Therefore, a comprehensive modeling of CZS risk by gestation
556 month of infection to devise potential temporal windows for
557 conception that minimize the burden of fetal complications is
558 needed.

559 Although we cannot disentangle the causes of the decline in
560 live births reported in our analysis, we argue that both abortions
561 and pregnancy postponement were important, with crucial
562 differences by state and some population groups that reflect
563 social inequalities in Brazil. The possibility that pregnancies
564 were intentionally terminated (and some performed later in
565 the gestational period), particularly when the link between
566 ZIKV and microcephaly got attention in the media, raise
567 concerns about reproductive women's health and rights. The
568 most recent evaluation of abortion safety estimated that 45.1%
569 of worldwide abortions performed in the period 2010-2014
570 were unsafe; in South America this number was 75.1% (54).
571 This issue has been heavily debated in Brazil, and in Sept/2016,
572 the National Prosecutor publicly expressed his support for
573 abortion for pregnant women infected with ZIKV, since the
574 continuation of pregnancy could not only result in CZS, but
575 also compromise the mental health status of the mother
576 (<http://agenciabrasil.ebc.com.br/geral/noticia/2016-09/em->
577 [parecer-janot-defende-aborto-para-gravidas-com-virus-zika](http://agenciabrasil.ebc.com.br/geral/noticia/2016-09/em-)).
578 However, no legislation change has happened yet.

579 Though the incidence of ZIKV cases has declined, the threat
580 is not gone. *Ae. Aegypti* reigns in Brazilian cities, and currently
581 transmits dengue, Zika, chikungunya, Mayaro virus, and, is com-
582 petent to transmit the strains of the virus circulating in the
583 country (55) – indeed, in 2018 urban yellow fever was recorded
584 in Brazil, 76 years after urban transmission had been successfully
585 eliminated. A new epidemic of ZIKV is possible, and could be
586 exacerbated by climatic conditions (56, 57). On the one hand,
587 vector control efforts do need to be strengthened, involving
588 the collaboration of different sectors of the government in an
589 effort to address challenges of the urban landscape that favor
590 the proliferation of mosquito breeding habitats (e.g., regular
591 access to water and waste collection). On the other hand, the
592 health and social consequences of the 2015-16 ZIKV epidemic in
593 Brazil should motivate strategies that properly address women's
594 reproductive health and rights, ranging from communication to
595 access to contraception and safe abortion. Failure to do either
596 will result in further generations of CZS babies, disproportionately
597 affecting the poor. Time will tell.

599 Materials and Methods

600 **Data collection.** We assembled a monthly time series of live births from
601 Jan/2010 to Dec/2016, for each one of the 26 Brazilian states and for the
602 federal district, from the Information System on Live Births (SINASC) of the
603 Ministry of Health. Records of births after Dec/2016 were still incomplete
604 and thus not included in the analysis. SINASC records live births from birth
605 certificates; by law, the certificate should be issued at the health facility
606 where the baby was delivered, or at a Public Civil Registry when the baby
607 is delivered at home (less than 3% of births in Brazil are delivered at home)

- 608 1. Faria NR, et al. (2016) Zika virus in the Americas: Early epidemiological and genetic findings. *Science* 352(6283):345-349.
- 609 2. Brito C (2015) Zika Virus: A New Chapter in the History of Medicine. *Acta Med Port* 28(6):679-680.
- 610 3. Cardoso CW, et al. (2015) Outbreak of acute exanthematous illness associated with Zika,

611 (58). Monthly GFR (considering the number of women aged 10-49 years in
612 the denominator) were calculated for each state. Although underreporting
613 of vital events still occurs (59), it is estimated that SINASC covers more than
614 96% of all births in the country (60).

615 Since abortion is heavily legally restricted in Brazil, comprehensive and
616 reliable data are not available, except from special surveys. As a proxy, we
617 used a monthly time series of hospital admissions of women due to abortion
618 complications between 2010 and 2016, for each one of the 26 Brazilian
619 states and for the federal district, obtained from the Hospital Information
620 System of the Ministry of Health (SIS-SUS). The data consider codes O00-O08
621 (pregnancy with abortive outcome) of the 10th Revision of the International
622 Statistical Classification of Diseases and Related Health Problems (ICD-10).
623 Although this information only refers to complications (and therefore does
624 not capture safely induced medical or surgical abortions), changes in the
625 pattern of these data may suggest that either spontaneous or induced
626 abortions deviated from expected behavior. Monthly rates of hospitalization
627 per 10,000 women ages 10-49 years were calculated for each state. Although
628 there is no comprehensive study on the quality of SIS-SUS, the data only
629 cover hospitalizations funded by the National Health Service, about 70-80%
630 of the total number of admissions, and there is some evidence that both
631 underreporting and misclassification occur (61).

632 Data on fetal deaths per month were obtained from the Mortality
633 Information System (SIM) of the Ministry of Health, for the period Jan/2010
634 to Dec/2016. Here, a fetal death was defined in accordance with the ICD-
635 10: "death prior to the complete expulsion or extraction from its mother of
636 a product of conception...the fetus does not breathe or show any other
637 evidence of life, such as beating of the heart, pulsation of the umbilical
638 cord, or definite movement of voluntary muscles" (62). More specifically, data
639 include death of fetuses with 22 or more gestational weeks, or birthweight
640 of 500g or more, or crown-heel length of 25cm or more (63). Monthly rates
641 of fetal deaths per 1,000 live births were calculated for each state. Analogous
642 to SINASC, despite some underreporting, the coverage of SIM is about 96%
643 (64).

644 **Seasonal differencing.** Human birth seasonality is a common phe-
645 nomenon in most populations (65, 66). In Brazil, peaks in births are observed
646 between March and May, with a secondary peak in September (52). This
647 pattern is the same across regions, and socioeconomic status of the mother
648 (52). To account for the seasonal effect, we analyzed the auto-correlation
649 function (ACF) of the original data and the data after seasonal differencing;
650 at lag 12 the ACF was high for the original time series and not significant
651 after seasonal differencing. Therefore, we considered a seasonal effect of
652 order 12 ($\tilde{x}_t = x_t - x_{t-12}$, where x_t is the record for month t) before applying
653 Auto Regressive Integrated Moving Average (ARIMA) models.

654 **ARIMA models.** We fit ARIMA(p, q, d)/(P, Q, D) m models to the time
655 series of GFR, fetal death rates, and rates of hospitalizations due to abortion
656 complications, separately for each of the 27 states and for the country
657 total (a total of 28 models), after taking seasonal differencing. The seasonal
658 differencing used $D=1, m=12$. We checked the autocorrelation and identified
659 $D=1, m=12$ as appropriate, and $D=2, m=12$ as not necessary, so the models
660 are of the form $(p, q, d)/(0, 0, 1)12$. We used the function `auto.arima` from R
661 package 'forecast'. The parameters (p, d, q) were determined by the function
662 through model selection criteria using Bayesian information criterion (BIC).
663 Here p is the order of autoregression, d is the degree of first differencing, and
664 q is the order of moving average. We utilized data from Jan/2010 to Aug/2015
665 to generate out-of-sample monthly forecasts for the period Sept/2015 to
666 Dec/2016, and the respective 95% confidence intervals. Forecasted GFR was
667 converted into number of births based on the female population aged 10-49
668 years. Monthly forecasts were compared with observed values recorded since
669 Sept/2015, in order to quantify any significant changes, and to assess if/how
670 these changes differed across states and over time. Observed values that
671 were outside the forecast confidence interval were considered as significant
672 changes.

673 **Cross-correlation.** We calculated cross-correlation functions between
674 the time series of births and hospitalizations due to abortion complications
675 to identify the time lag that maximizes the correlation between the two
676 series, which is an indication of the timing of abortions (*SI Appendix*). For
677 the purpose of assessing whether changes in the timing of abortions were
678 observed after the onset of ZIKV, we considered two time periods. First, we
679 used Jan/2010 to Aug/2015, prior to the massive attention given to ZIKV in
680 the media. Second, we used Sept/2015 to Dec/2016, when awareness of the
681 congenital effects of ZIKV was widespread.

682 **Acknowledgements.** We thank Pedro Henrique Santana for downloading
683 publicly available data on hospitalizations due to abortion complications,
684 and Wanderson Kleber de Oliveira for sharing data recently used in a
685 publication.

- 686 chikungunya, and dengue viruses, Salvador, Brazil [letter]. *Emerg Infect Dis* 21(12):2274-2276.
- 687 4. Kleber de Oliveira W, et al. (2016) Increase in Reported Prevalence of Microcephaly in
688 Infants Born to Women Living in Areas with Confirmed Zika Virus Transmission During
689 the First Trimester of Pregnancy - Brazil, 2015. *MMWR Morb Mortal Wkly Rep* 65(9):242-247.
- 690 5. Oliveira CS & Vasconcelos PFC (2016) Microcephaly and Zika virus. *J Pediatr (Rio J)* 92:103-

681
682
683
684
685
686
687
688
689
690
691
692
693
694
695
696
697
698
699
700
701
702
703
704
705
706
707
708
709
710
711
712
713
714
715
716
717
718
719
720
721
722
723
724
725
726
727
728
729
730
731
732
733
734
735
736
737
738
739
740
741
742
743
744
745
746
747
748

- 105.
6. WHO (2016) WHO Director-General summarizes the outcome of the Emergency Committee regarding clusters of microcephaly and Guillain-Barré syndrome. (World Health Organization - WHO).
7. Paules CI & Fauci AS (2017) Emerging and reemerging infectious diseases: The dichotomy between acute outbreaks and chronic endemicity. *JAMA* 317(7):691-692.
8. WHO (2016) An R&D Blueprint for Action to Prevent Epidemics. Plan of Action May 2016. (World Health Organization - WHO, Geneva), p 44.
9. Melo ASO, et al. (2016) Zika virus intrauterine infection causes fetal brain abnormality and microcephaly: tip of the iceberg? *Ultrasound Obstet Gynecol* 47:6-7.
10. Mlakar J, et al. (2016) Zika Virus Associated with Microcephaly. *N Engl J Med* 374(10):951-958.
11. Cordeiro MT, Pena LJ, Brito CA, Gil LH, & Marques ET (2016) Positive IgM for Zika virus in the cerebrospinal fluid of 30 neonates with microcephaly in Brazil. *Lancet* 387(10030):1811-1812.
12. Sarno M, et al. (2016) Zika Virus Infection and Stillbirths: A Case of Hydrops Fetalis, Hydranencephaly and Fetal Demise. *PLoS Negl Trop Dis* 10(2):e0004517.
13. Garcez PP, et al. (2016) Zika virus impairs growth in human neurospheres and brain organoids. *Science* Published online 10 Apr 2016.
14. Tang H, et al. (2016) Zika Virus Infects Human Cortical Neural Progenitors and Attenuates their Growth. *Cell Stem Cell* 18(5):587-590.
15. WHO (2016) Zika Virus, microcephaly, and Guillain Barré Syndrome situation report - 14 April 2016. (World Health Organization - WHO).
16. CDC (2016) CDC Concludes Zika Causes Microcephaly and Other Birth Defects. (Centers for Disease Control and Prevention - CDC).
17. Brito CAA & Cordeiro MT (2016) One year after the Zika virus outbreak in Brazil: from hypotheses to evidence. *Rev Soc Bras Med Trop* 49:537-543.
18. Costello A, et al. (2016) Defining the syndrome associated with congenital Zika virus infection. *Bull World Health Organ* 94:406-406A.
19. Franca GV, et al. (2016) Congenital Zika virus syndrome in Brazil: a case series of the first 1501 livebirths with complete investigation. *Lancet* 388(10047):891-897.
20. Oliveira DBL, et al. (2016) Prolonged Shedding of Zika Virus Associated with Congenital Infection. *N Engl J Med* 375(12):1202-1204.
21. Brasil P, et al. (2016) Zika Virus Infection in Pregnant Women in Rio de Janeiro. *N Engl J Med* 375(24):2321-2334.
22. Felix AC, et al. (2017) Cross reactivity of commercial anti-dengue immunoassays in patients with acute Zika virus infection. *J Med Virol* 89(8):1477-1479.
23. Lanciotti RS, et al. (2008) Genetic and serologic properties of Zika virus associated with an epidemic, Yap State, Micronesia, 2007. *Emerg Infect Dis* 14(8):1232-1239.
24. de Oliveira WK, et al. (2017) Infection-related microcephaly after the 2015 and 2016 Zika virus outbreaks in Brazil: a surveillance-based analysis. *Lancet* Published online 21 June 2017.
25. Castro MC (2016) Zika Virus and Health Systems in Brazil: From Unknown to a Menace. *Health Systems & Reform* 2(2):119-122.
26. Sedgh G, Singh S, & Hussain R (2014) Intended and Unintended Pregnancies Worldwide in 2012 and Recent Trends. *Studies in family planning* 45(3):301-314.
27. World Health Organization (2002) Violence by intimate partners. *World report on violence and health*, eds Krug EG, Dahlberg LL, Mercy JA, Zwi AB, & Lozano R (World Health Organization, Geneva), pp 89-121.
28. Sedgh G, et al. (2016) Abortion incidence between 1990 and 2014: global, regional, and subregional levels and trends. *The Lancet* 388(10041):258-267.
29. IBGE (2013) Pesquisa Nacional de Saúde 2013. Volume 3 - Ciclos de vida. (Instituto Brasileiro de Geografia e Estatística - IBGE, Rio de Janeiro, RJ).
30. Diniz D & Medeiros M (2010) Aborto no Brasil: uma pesquisa domiciliar com técnica de urna. *Cien Saude Colet* 15:959-966.
31. Dias TZ, Passini R, Jr., Duarte GA, Sousa MH, & Faundes A (2015) Association between educational level and access to safe abortion in a Brazilian population. *Int J Gynaecol Obstet* 128(3):224-227.
32. Brasil P, et al. (2016) Zika Virus Infection in Pregnant Women in Rio de Janeiro - Preliminary Report. *N Engl J Med* March 4, 2016.
33. Barbeiro FMS, et al. (2015) Fetal deaths in Brazil: a systematic review. *Rev Saude Publica* 49(22).
34. Carvalho JR, Oliveira VH, & Quintana-Domeque C (2017) Zika Virus Prevalence, Correlates and Preventive Behaviors: New Evidence from Survey Data. in *IZA Discussion Paper Series No. 10591* (IZA - Institute of Labor Economics, Bonn, Germany), p 21.
35. Diniz D, Medeiros M, & Madeiro A (2017) Brazilian women avoiding pregnancy during Zika epidemic. *J Fam Plann Reprod Health Care* 43(1):80.
36. Aiken ARA, et al. (2016) Requests for Abortion in Latin America Related to Concern about Zika Virus Exposure. *N Engl J Med* 375(4):396-398.
37. Henderson JT, Hwang AC, Harper CC, & Stewart FH (2005) Safety of mifepristone abortions in clinical use. *Contraception* 72(3):175-178.
38. Goldstein J, Kreyenfeld M, Jasilionienė A, & Karaman Örsal DD (2013) Fertility Reactions to the "Great Recession" in Europe: Recent Evidence from Order-Specific Data. *Demogr Res* 29(4):85-104.
39. Sobotka T, Skirbekk V, & Philipov D (2011) Economic recession and fertility in the developed world. *Popul Dev Rev* 37(2):267-306.
40. Vrachnis N, Vlachadis N, Iliodromiti Z, Vlachadi M, & Creatsas G (2014) Greece's birth rates and the economic crisis. *Lancet* 383(9918):692-693.
41. IBGE (2017) Pesquisa Mensal de Emprego. (Instituto Brasileiro de Geografia e Estatística - IBGE).
42. Leite IC & Gupta N (2007) Assessing regional differences in contraceptive discontinuation, failure and switching in Brazil. *Reproductive Health* 4(1):6.
43. IBGE (2010) *Censo Demográfico 2010: Nupcialidade, fecundidade e migração - Resultados da amostra* (Instituto Brasileiro de Geografia e Estatística, Rio de Janeiro, RJ).
44. Bongaarts J & Feeney G (2008) The quantum and tempo of life-cycle events. *How Long Do We Live? Demographic Models and Reflections on Tempo Effects*, eds Barbi E, Vaupel JW, & Bongaarts J (Springer Berlin Heidelberg, Berlin, Heidelberg), pp 29-65.
45. Singh S, Prada E, & Juarez F (2010) The Abortion Incidence Complications Method: A Quantitative Technique. *Methodologies for Estimating Abortion Incidence and Abortion-Related Morbidity: A Review*, eds Singh S, Remez L, & Tartaglione A (Guttmacher Institute, International Union for the Scientific Study of Population, New York, Paris), pp 71-97.
46. Murray NEA, Quam MB, & Wilder-Smith A (2013) Epidemiology of dengue: past, present and future prospects. *Clin. Epidemiol* 5:299-309.
47. Duarte HHP & França EB (2006) Qualidade dos dados da vigilância epidemiológica da dengue em Belo Horizonte, MG. *Rev Saude Publica* 40:134-142.
48. Alfenas Amorim F, Cavenaghi S, & Eustáquio J (2008) Mudanças recentes no uso de métodos contraceptivos no Brasil e na Colômbia - com especial menção à esterilização feminina e masculina. *Población y salud sexual y reproductiva en América Latina*, ed Wong LLR (Asociación Latinoamericana de Población, Rio de Janeiro, RJ), pp 101-129.
49. Neri M & Soares W (2002) Desigualdade social e saúde no Brasil. *Cadernos de Saúde Pública* 18:S77-S87.
50. van der Linden V, et al. (2016) Description of 13 Infants Born During October 2015–January 2016 With Congenital Zika Virus Infection Without Microcephaly at Birth - Brazil. *MMWR Morb Mortal Wkly Rep* 65:1343-1348.
51. Lam DA & Miron JA (1994) Global patterns of seasonal variation in human fertility. *Ann N Y Acad Sci* 709:9-28.
52. Moreira MM (2013) Sazonalidade dos nascimentos no Brasil - 2000-2010. *XXIX Congresso de la Asociación Latinoamericana de Sociología*, (Assessed June 27, 2017: http://actacientifica.servicioit.cbi/biblioteca/gt/GT9/GT9_deMelloMoreiraM.pdf).
53. Eisen L, et al. (2014) The impact of temperature on the bionomics of *Aedes (Stegomyia) aegypti*, with special reference to the cool geographic range margins. *Journal of medical entomology* 51(3):496-516.
54. Ganatra B, et al. (2017) Global, regional, and subregional classification of abortions by safety, 2010-14: estimates from a Bayesian hierarchical model. *The Lancet* Published online: 27 September 2017.
55. Couto-Lima D, et al. (2017) Potential risk of re-emergence of urban transmission of Yellow Fever virus in Brazil facilitated by competent *Aedes* populations. *Sci Rep* 7(1):4848.
56. Munoz AG, et al. (2017) Could The Recent Zika Epidemic Have Been Predicted? *bioRxiv*.
57. Mordecai EA, et al. (2017) Detecting the impact of temperature on transmission of Zika, dengue, and chikungunya using mechanistic models. *PLoS Negl Trop Dis* 11(4):e0005568.
58. IBGE (2009) *Indicadores Sociodemográficos e de Saúde no Brasil 2009* (Ministério do Planejamento, Orçamento e Gestão; Instituto Brasileiro de Geografia e Estatística - IBGE, Rio de Janeiro).
59. Szwarcwald CL, et al. (2011) Busca ativa de óbitos e nascimentos no Nordeste e na Amazônia Legal: Estimativa das coberturas do SIM e do Sinasc nos municípios brasileiros. *Saúde Brasil 2010: uma análise da situação de saúde e de evidências selecionadas de impacto de ações de vigilância em saúde. Série G. Estatística e Informação em Saúde*, (Ministério da Saúde, Secretaria de Vigilância em Saúde, Departamento de Análise de Situação em Saúde, Brasília), pp 79-98.
60. Brasil. Ministério da Saúde & Secretaria da Vigilância em Saude (2015) Saude Brasil 2014. Uma análise da situação de saude e das causas externas. (Ministerio da Saude, Brasília, DF).
61. Orlandi DP, Coelho Junior TP, & Almeida JEF (2016) Sistema de Informações Hospitalares (SIH-SUS): Revisão Sobre Qualidade da Informação e Utilização do Banco de Dados em Pesquisas. in *IX Congresso CONSAD de Gestão Pública* (Brasília, DF), p 17.
62. WHO (1993) International statistical classification of diseases and related health problems: tenth revision, volume 2: instruction manual. (World Health Organization (WHO), Geneva).
63. Brasil, Ministério da Saúde, Secretaria de Vigilância em Saúde, & Secretaria de Atenção à Saúde (2009) *Surveillance handbook on child and fetal death and of the committee of prevention of child and fetal death [Manual de vigilância do óbito infantil e fetal e do Comitê de Prevenção do Óbito Infantil e Fetal]* (Ministério da Saúde, Secretaria de Vigilância em Saúde, Secretaria de Atenção à Saúde, Brasília) 2 Ed p 96.
64. Brasil. Ministério da Saúde (2013) Sistema de Informações sobre Mortalidade - SIM. Consolidação da base de dados de 2011. (Coordenação Geral de Informações e Análises Epidemiológicas - CGIAE; Secretaria de Vigilância em Saúde; Ministério da Saúde, Brasília).
65. Condon RG & Scaglione R (1982) The ecology of human birth seasonally. *Hum. Ecol* 10(4):495-511.
66. Cummings DR (2014) Seasonality updated in 28 European/Mediterranean countries: A continuing enigma. *Am J Hum Biol* 26(3):424-426.

749
750
751
752
753
754
755
756
757
758
759
760
761
762
763
764
765
766
767
768
769
770
771
772
773
774
775
776
777
778
779
780
781
782
783
784
785
786
787
788
789
790
791
792
793
794
795
796
797
798
799
800
801
802
803
804
805
806
807
808
809
810
811
812
813
814
815
816