

## A BAR WEIGHT FROM INDIANA

by  
James Tharp  
631 E. Buchanan  
Plainfield, IN 46168

This red slate bar atlatl weight was found in Darke County, Ohio. Bar atlatl weights are a product of the Middle Archaic people. It has been argued that because of their rather non-elaborate design, they may have been among the early varieties of atlatl weights. This theory, however, is not demonstrable in the literature.

This type is shaped like an ellipse with squared ends. It is flat on the bottom, and gently convex from end to end. The sides are squared and are also elliptical. Across the center on the upper and side surfaces is an incised line which is interpreted as being a notch for the hafting thongs.

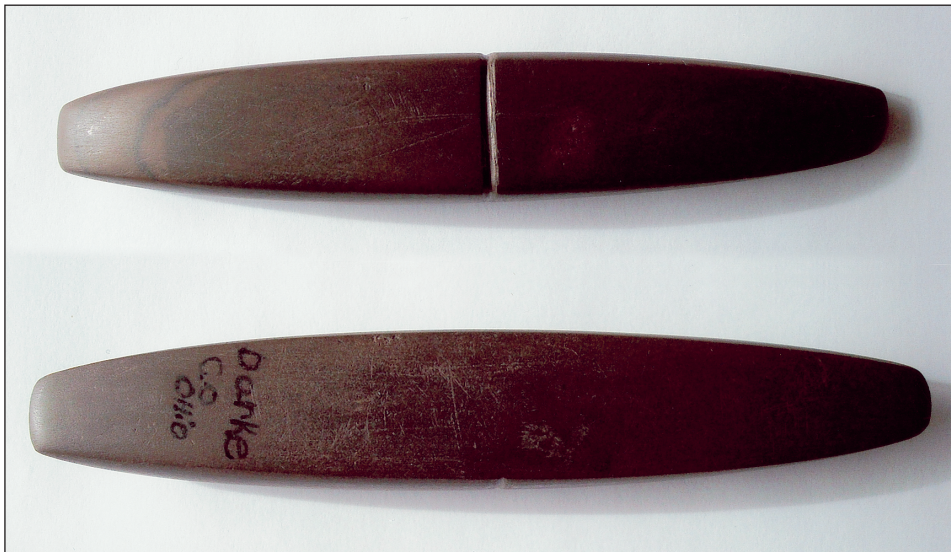


Figure 1 (Tharp) Obverse and reverse views of a red slate ellipsoidal atlatl weight from Darke County, Ohio.

---

## TRAPEZOIDAL PENDANT FROM ALLEN COUNTY, OHIO

by  
Elaine Holzapel  
Regional Correspondent



Trapezoidal pendants, distinguished by their slightly excurvate sides, could date to the Hopewell, Adena, or Ft. Ancient cultures. Some, thick and oval in outline, appear crudely made, but others are expertly crafted (Converse 1978:82, 83).

The trapezoidal pendant in Figure 1 is thin, finely made, and smoothly finished. It was recovered in 1972 by Billy Ford of Spencerville, Ohio, when he was plowing a field near the Auglaize River in Allen County. He looked down to see the banded slate pendant with a wolf jaw lying near it. The artifact measures 3½ inches long and has forty tally marks along the edges.

Figure 1 (Holzapfel) Trapezoidal pendant found by Billy Ford in Allen County, Ohio.