

Inclusive and Equitable Neighborhood Revitalization on Columbus's Southside: A University and Community Partnership to Ensure Diversity and Inclusion in the Neighborhood's Renaissance

Purpose

The energy building on the Southside is palpable. Already, more than \$20 million in housing redevelopment alone has occurred in the neighborhood. Investments in health, safety, and education have also occurred. With all of the redevelopment activity on the Southside, Kirwan and our partners began to ask some key questions: How can we ensure that everyone in the community benefits from these renewed investments? How can we do redevelopment in a way that bridges people from different walks of life together? And how can our organizations help in that effort? Our broad goal through all of this work is to support the creation of an opportunity-rich and diverse community in the Southside.

Through the Office of Outreach and Engagement, the Kirwan Institute and Community Development for All People received a 2-year grant to look deeper at those questions through a series of activities centered around inclusive community planning and engagement. These activities include asset mapping, developing and leveraging existing "third places", and developing programming around food, children, and housing.

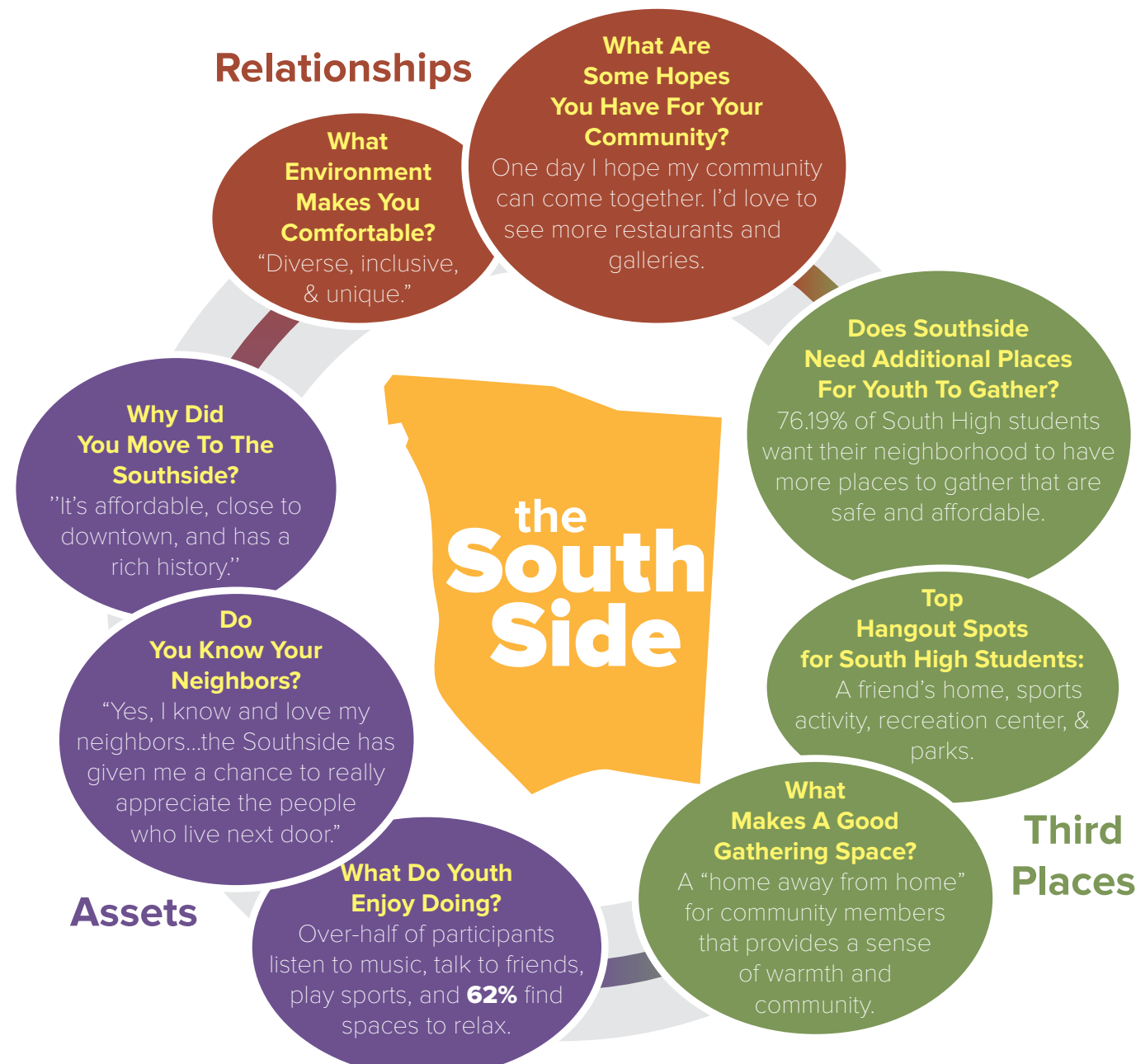
Impact

In our first year, we engaged with over 400 Southside residents--from High School students to young mothers-- in order to identify and map assets within the community. Many of the assets that we gathered were places, people, and institutions that were able to draw the community together to build upon their shared resources. Here, we present the findings.

The Southside

Residents are banding together for change. Surveys show residents hope for vibrant & inclusive revitalization.

Social capital is formed by building strong bonds between people from different backgrounds.



THE OHIO STATE UNIVERSITY

Ohio State Colleges/Units Involved

The Kirwan Institute for the Study of Race & Ethnicity

Community Partners Involved

- Community Development for All People
- Reverend John Edgar, Pastor & Executive Director
 - David Cofer, Managing Director

Contact

Jason Reece
 Director of Research
 The Kirwan Institute for the Study of Race & Ethnicity
 Moritz College of Law
reece.35@osu.edu

Jillian Olinger
 Research Associate
olinger.24@osu.edu

Kip Holley
 Research Associate
kipholley.kirwaninstitute@gmail.com

<http://www.4allpeople.org>

