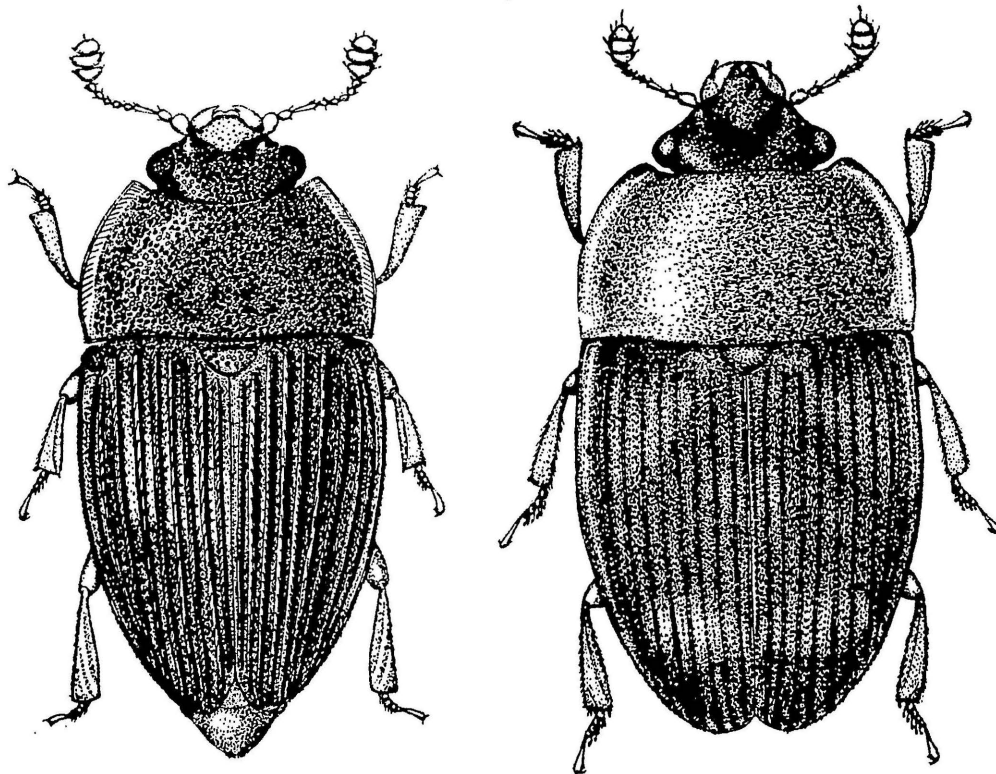


**An Annotated Bibliography  
of the Genus *Stelidota* Erichson  
(Coleoptera: Nitidulidae, Nitidulinae)**

**MICHAEL J. WEISS and ROGER N. WILLIAMS**



**OHIO AGRICULTURAL RESEARCH AND DEVELOPMENT CENTER  
U. S. 250 and Ohio 83 South  
Wooster, Ohio**

CONTENTS

\*\* \*\*

Introduction ..... 1  
World Distribution of the Species of Stelidota Erichson ..... 3  
Species Removed from the Genus Stelidota ..... 5  
Publications with Information on Stelidota ..... 6  
Index ..... 24

All publications of the Ohio Agricultural Research and Development Center are available to all on a nondiscriminatory basis without regard to race, color, national origin, sex, or religious affiliation.

AN ANNOTATED BIBLIOGRAPHY OF THE  
GENUS STELIDOTA ERICHSON

(Coleoptera: Nitidulidae, Nitidulinae)

Michael J. Weiss and Roger N. Williams<sup>1/</sup>

Introduction

The purpose of this circular is to consolidate the literature on the genus *Stelidota* Erichson. *Stelidota* species occur in all the faunal regions of the world with the exception of the Australo-Papuan. The Neotropical region with 30 described species has the largest representation. The numbers of species reported from other regions are: Nearctic 5, Ethiopian 3, Oriental 7, and Palearctic 1.

The taxonomy of the genus is difficult and has not been revised since Erichson (1834) erected the genus. Jelinek (1965) did a minor, but incomplete, revision in order to distinguish *Ipidia* from *Stelidota*. The genotype is *Stelidota geminata* (Say). The following description for the genus is from Parsons (1943):

"Body oval, rather convex, moderately small. Head small, clypeus may or may not be distinct. Antennae a little longer than the head, first segment strongly enlarged anteriorly, second convex, third to fifth narrow and elongate, sixth to eighth short, club oval. Antennal grooves subocular, parallel, and moderately deep. Labrum bilobed. Mandibles with a small tooth behind the apex, bearded. Lacinia short, broad, rounded at tip, heavily bearded apically and on inner side. Maxillary palpi with first segment small, second clavate, third short and transverse, fourth cylindrical, about as long as the other three. Ligula with rather small paraglossae; labial palpi with first segment minute, second clavate, third thick, oblong, with or without a seta at apex. Mentum transverse, broadly and deeply emarginate anteriorly. Pronotum as broad or broader than the elytra. Elytra tapering apically; epipleurae broad, attaining the apices. Prosternal process broad, elevated and rounded behind the coxae. Mesocoxae a little further apart than the procoxae. Metacoxae nearly twice as far apart as the mesocoxae. The male additional dorsal segment may be distinctly visible or scarcely evident. Middle and posterior tibiae sometimes apically dilated in the male. Tarsi moderately dilated. Claws simple."

The bibliographical information presented here was obtained by a thorough search of the libraries at the The Ohio State University and the Ohio Agricultural Research and Development Center for the years 1808 to 1979. This literature search recovered most, but not all, checklists, faunal lists, and comprehensive publications which contained information on the genus.

Entries are listed alphabetically by author except in cases where a publication is anonymous or more likely to be identified with a governmental agency under whose sponsorship it was published. The abbreviations in the citations follow the American

---

<sup>1</sup> Graduate Research Associate and Associate Professor, Department of Entomology, Ohio Agricultural Research and Development Center, Wooster.

standard for periodical title abbreviations published in Biological Abstracts, 45(13): 4347-4361. Some articles could not be retrieved for annotation. However, the citations are included in the bibliography and some additional information is provided whenever possible. Articles dealing with species once placed in the genus *Stelidota* are listed. Numbers in parentheses following an annotation represent the page numbers which have information on the species of *Stelidota*.

The authors would like to acknowledge the professional people whose advice, criticism, and knowledge were greatly appreciated. Drs. Roy W. Rings, Walter A. Connell, George F. Shambaugh, Mr. Lorin R. Gillogly, Mr. Larry Watrous, and Ms. Virgie Sapp. We would also like to thank Mrs. Viola Keillor, Mrs. Maxine Johnson, and Mrs. Sandra Murray for typing the manuscript.

WORLD DISTRIBUTION OF THE SPECIES OF STELIDOTA ERICHSON

<u>Species and Synonyms</u>	<u>Region</u>
<i>aequalis</i> Reitter	Neotropical
<i>alternans</i> Erichson	Neotropical
<i>alternata</i> Gillogly	Oriental
<i>balanomorpha</i> (Montrouzier) see Grouvelle 1913 <i>Nitidula balanomorpha</i> Montrouzier	Neotropical
<i>bugabensis</i> Sharp	Neotropical
<i>championi</i> Sharp	Neotropical
<i>chontalensis</i> Sharp	Neotropical
<i>clavigera</i> Sharp	Neotropical & Nearctic
<i>coenosa</i> Erichson	Neotropical
<i>costulata</i> Grouvelle	Oriental
<i>costata</i> (Schaufuss) see Jelinek 1967 <i>Epuraeanella costata</i> Schaufuss	Ethiopian
<i>curta</i> Grouvelle	Neotropical
<i>didyma</i> Reitter	Ethiopian
<i>disticha</i> Gillogly	Neotropical
<i>explanata</i> Grouvelle	Oriental
<i>extranea</i> Sharp	Neotropical
<i>ferruginea</i> Reitter	Neotropical & Nearctic
<i>fortis</i> Sharp	Neotropical
<i>geminata</i> (Say) see Grouvelle 1913 <i>biseriata</i> Reitter	Neotropical & Nearctic
<i>guacharensis</i> Gillogly	Neotropical
<i>insularis</i> Van Dyke	Neotropical
<i>lifuana</i> Grouvelle	Neotropical
<i>marginata</i> Grouvelle	Neotropical
<i>meridionalis</i> Grouvelle	Neotropical

Species and SynonymsRegion

<i>metabola</i> Kirsch	Neotropical
<i>multiguttata</i> Reitter	Oriental & Palearctic
<i>nigrovaria</i> (Fairmaire) see Grouvelle 1913 <i>multiguttata</i> Grouvelle (non-Reitter)	Oriental
<i>octomaculata</i> (Say)	Nearctic
<i>octonata</i> Grouvelle	Oriental
<i>orientalis</i> Arrow	Oriental
<i>ovalis</i> Sharp	Neotropical
<i>pallens</i> Sharp	Neotropical
<i>remelleti</i> Enrody-Younga	Ethiopian
<i>rubripes</i> Reitter	Neotropical
<i>runderata</i> Erichson	Neotropical
<i>solitaria</i> Sharp	Neotropical
<i>stictica</i> Sharp	Neotropical
<i>strigosa</i> (Gyllenhal) see Grouvelle 1913 <i>lusca</i> (Gyllenhal)	Neotropical & Nearctic
<i>thoracica</i> Kirsch	Neotropical
<i>trimaculata</i> Grouvelle	Neotropical
<i>vicina</i> Grouvelle	Neotropical

SPECIES REMOVED FROM THE GENUS STELIDOTA

Present Genera

Species

*Pocadites*

*dilatimanus* (Reitter 1884-1885)  
*Stelidota dilatimanus* Reitter 1877

*Ipidia*

*variolosa variolosa* Reitter, see Jelinek 1965  
*Ipidia variolosa* Reitter 1879  
*Stelidota hattorii* Kono 1940

*Pria*

*clavicornis* (Fairmaire), see Grouvelle 1913  
*Stelidota clavicornis* Fairmaire 1869

*Ipidia*

*sexguttata octusis* (Reitter), see Jelinek 1965  
*Stelidota octusis* Reitter 1919

(Not known)

*orphana* Klug  
*Stelidota orphana* Klug, see Erichson 1843

*Lasiodactylus*

*stelidotoides* Ollif, see Grouvelle 1913  
*Stelidota procerus* Reitter 1875

*Ipidia*

*sexguttata sexguttata* (Sahlberg), see Jelinek 1965  
*Nitidula sexguttata* Sahlberg 1834  
*Ipidia lata* Aubé 1850  
*Ipidia integra* Wankowicz 1867  
*Ipidia sexguttata* Seidlitz 1872  
*Ipidia biguttata* Stierlin 1877  
*Stelidota sexguttata* (Seidlitz 1888)

*Ipidia*

*sibirica* (Reitter), see Jelinek 1965  
*Stelidota sibirica* Reitter 1879  
*Ipidia sibirica* Reitter 1884

*Epuraea*

*signata* Broun, see Grouvelle 1913

*Epuraea*

*zealandica* Sharp, see Grouvelle 1913

PUBLICATIONS WITH INFORMATION ON STELIDOTA

- 001 Armstrong, J. W. 1976. The range extension of the fruit pest *Stelidota geminata* (Say) in California (Coleoptera: Nitidulidae). Pan-Pac. Entomol., 52(1): 83-84.

Adults and larvae of *S. geminata* were recovered from decaying oranges in Fresno and Madera counties in California. Previous collection data for *S. geminata* in California were limited to southern California (see 1959 Coop. Econ. Insect Report, 9(15):1050).

- 002 Arnett, R. H. 1960. The beetles of the United States. Catholic Univ. Press, Washington, D. C. 1112 pp.

A key is given to the genera of Nitidulidae occurring in the United States, including *Stelidota*. An illustration of the head of *S. geminata* is given. (760)

- 003 Arrow, G. J. 1900. Coleoptera, Clavicornia, Heteromera. In Andrews, C. W. A monograph of Christmas Island (Indian Ocean). Brit. Mus. Monogr., Vol. 8. 337 pp.

*Stelidota orientalis* is described as a new species. (92)

- 004 Ashmead, W. H. 1893. Monograph of the North American Proctotrypidae. U. S. Nat. Mus., Bull. 45. 390 pp.

*Proctotrypes* (=Cryptoserphus) *obsoletus* (Say) is reported as being parasitic on *Stelidota strigosa* larvae. (340)

- 005 Aubé, C. 1850. Description de quelques insectes coleopteres appartenant a l'Europe et a Algeria. Ann. Soc. Entomol. France, ser. 2, 8:299-346. [The description of some coleopteran insects belonging to Europe and Algeria.]

*Stelidota lata* is described as a new species. (328)

- 006 Blackwelder, R. E. 1945. Checklist of the coleopterous insects of Mexico, Central America, the West Indies, and South America. Part 3. Smithsonian Inst. and U. S. Nat. Mus., Bull. 185. 550 pp.

Species of *Stelidota* collected from Mexico, Central America, West Indies, and South America are: *aequalis*, *alternans*, *bugabensis*, *championi*, *chontalensis*, *clavigera*, *coenosa*, *extranea*, *ferruginea*, *fortis*, *geminata*, *marginata*, *meridionalis*, *metabola*, *ovalis*, *pallens*, *rubripes*, *runderata*, *solitaria*, *stictica*, *strigosa*, *thoracica*, *trimaculata*, and *vicina*. (413)

- 007 Blackwelder, R. E. and R. M. Blackwelder. 1948. Fifth supplement to the Leng Catalog of Coleoptera of America, North of Mexico. J. D. Sherman, Jr., Mt. Vernon, N. Y. 87 pp.

*Stelidota octomaculata* is listed. The authors erroneously list *S. biseriata* as a synonym for *S. octomaculata*. (24)

- 008 Blatchley, W. S. 1910. Coleoptera or beetles of Indiana. Nature Publishing Co., Indianapolis, Ind. 1386 pp.



Description, state distribution, and habitat are given for *S. geminata* and *S. octomaculata*. (641-642)

- 009 Böving, A. G. and J. G. Rozen. 1962. Anatomical and systematic study of the mature larvae of the Nitidulidae (Coleoptera). Entomol. Medd., 31:265-299.

The authors include a key to the final instars of nitidulid larvae including *Stelidota geminata*. (290) An illustration of the final instar larva of *S. geminata* is given. (291) Host and collection data are given for the specimens used in the study. (298)

- 010 Bradley, J. C. 1930. A manual of the genera of beetles of America north of Mexico. Daw, Illston and Co., Ithaca, N. Y. 360 pp.

A key is given to the genera of the Nitidulidae known to North America including *Stelidota*. (147)

- 011 Brimley, C. S. 1938. The insects of North Carolina. North Carolina Dep. of Agr., Raleigh. 560 pp.

*Stelidota geminata* and *S. octomaculata* were collected in North Carolina. Location and month of collection are given. (177)

- 012 Broun, T. 1880. Manual of the New Zealand Coleoptera. Colonial Museum & Geological Survey Dep., Wellington.

Broun described *Epuraea signatum* and listed *E. zealandica* Sharp. These species of *Epuraea* are placed under *Stelidota* and under *Epuraea* by Grouvelle 1913. Obviously, the placement under *Stelidota* is in error. (Broun 169, 167). (Grouvelle 123, 128, and 130).

- 013 Brues, C. T. 1916. The Hymenoptera, or wasp-like insects, of Connecticut. State Geol. and Nat. Hist. Surv., Bull. 22. 790 pp.

*Serphus obsoletus* Say is listed as a parasite of *Stelidota strigosa*. (575)

- 014 Carrillo-S., J. L., A. Ortega-C. and W. W. Gibson. 1966. Lista de insectos en la coleccion entomologica del Instituto Nacional de Investigaciones Agricolas. Instituto Nacional de Investigaciones Agricolas, S.A.G. Mexico. Folleto Misc. 14. 133 pp.

*Stelidota strigosa* was found on coconut-palm in July and August at San Blas, Nayarit. (40)

- 015 Chagon, G. (no date given). Contribution à l'étude des Coleopteres de la province de Quebec. Dep. de Biologie l'Univ. de Montréal, Montréal, Can. 385 pp. [Contributions to the study of Coleoptera of the province of Quebec.]

Description and habitat are given for *Stelidota octomaculata*. (161-162)

- 016 Chatterjee, S. N. 1924. Catalogue of Indian insects. Part 5. Nitidulidae. Government of India, Calcutta. 40 pp.

*Stelidota multiguttata* and *S. nigrovaria* are listed. Geographical distribution is given. (19)

- 017 Chevrolat, L. A. A. 1863. Coleopteres de l'ile de Cuba. Notes, synonymies et descriptions d'espèces nouvelles. Ann. Soc. Entomol. France, 4(3):589-620. [Coleoptera of the Isle of Cuba. Notes, synonymies and descriptions of new species.]

*Stelidota geminata*, *S. coenosa*, and *S. ruderata* are listed. Descriptions and distribution are given. (603-604)

- 018 Connell, W. A. 1956. Nitidulidae of Delaware. Univ. of Delaware, Agr. Exp. Sta., Bull. 318. 67 pp.

A key is given for the adults of Nitidulidae found in Delaware, including *Stelidota geminata*. (58) A list of hosts on which *S. geminata* adults and larvae were collected is given. (66)

- 019 Connell, W. A. 1975. Hosts of *Carpophilus dimidiatus*. J. Econ. Entomol., 68(2):279-280.

*Stelidota* spp. are reported as being associated with corn or corn products. (27)

- 020 Chûjô, M. and S. Hisamatsu. 1960. Nitidulid-beetles of Niigata Prefecture, Japan, collected by Dr. K. Baba (I). Insects of Niigata Prefecture (IV), Report of Nagaoka Science Museum. pp. 19-24.

*Stelidota sibirica* Reitter is listed in the genus *Ipidia* and *S. dilatimana* is listed as a synonym of *Pocadites dilatimanus*. (23, 24)

- 021 Crotch, G. R. 1880. Checklist of the Coleoptera of America, North of Mexico. G. A. Bates, Naturalists Bur., Salem, Mass. 136 pp.

*Stelidota geminata*, *S. octomaculata*, and *S. strigosa* are listed. (48)

- 022 Daugherty, D. M. and C. H. Brett. 1966. Nitidulidae associated with sweet corn in North Carolina and influences affecting their damage to this crop. North Carolina Agr. Exp. Sta., Bull. 171. 40 pp.

*Stelidota* spp. were collected from banana bait stations in North Carolina, yet were never collected from sweet corn in the field. (8)

- 023 Dillon, E. S. and L. S. Dillon. 1964. A manual of common beetles of Eastern North America. Row, Peterson and Co., Evanston, Ill. 884 pp.

A key is given for the genera of Nitidulidae including *Stelidota*. (390) Description and collection habitat are given for *S. geminata*. (392-393) An illustration of a *S. geminata* adult is provided. (395)

- 024 Dorsey, C. K. and J. G. Leach. 1956. The bionomics of certain insects associated with oak wilt with particular reference to the Nitidulidae. J. Econ. Entomol., 49(2):219-230.

*Stelidota geminata* adults were collected from fresh tree wounds in West Virginia. (222) *Stelidota geminata* were reared from oak trees infected with oak wilt disease. (224)

- 025 Douglas, W. A. 1941. Field infestation by insects that injure rice in storage. U. S. Dep. Agr., Circ. 602. 8 pp.

*Stelidota geminata* is listed as being a minor pest in stored rice and rice by-products. (2)

- 026 Dury, C. 1902. A revised list of the Coleoptera observed near Cincinnati, Ohio. J. Cincinnati Soc. Nat. Hist., 20:107-196.

*Stelidota geminata*, *S. octomaculata*, and *S. strigosa* were collected near Cincinnati. (30) Collection techniques used to collect *Stelidota* spp. are given. (29)

- 027 Eastham, L. E. S. 1929. The post-embryonic development of *Phaenoserphus viator* Hal. (Proctotrypoidea), a parasite of the larva of *Pterostichus niger* (Carabidae), with notes on the anatomy of the larva. Parasitol., 21(2):1-20.

*Proctotrypes* (=Cryptoserphus) *obsoletus* (Say) is listed as being parasitic on *Stelidota strigosa* larvae. (2)

- 028 Erichson, W. F. 1843. Versuch einer Systematischen Eintheilung der Nitidularien. Germar's Z. Entomol., 4:225-361. [An attempt at a systematic classification of the nitidulids.]

The genus *Stelidota* erected. (300-302) *Stelidota lusca* (Gyllenhal) is synonymized with *S. strigosa*. (303) *S. geminata* and *S. strigosa* are described. (302) *S. ruderata*, *S. coenosa*, and *S. alternans* are described as new species. (303) *S. didyma* and *S. orphana* are listed with no description. (304) (see Reitter 1875.)

- 029 Fairmaire, L. 1849. Essai sur les Coleopteres de la Polynesia. Rev. Mag. Zool., ser. 2, 1:277-291, 352-365, 410-422, 445-460, 504-516, 550-556. [Essay on the Coleoptera of Polynesia.]

No copy obtained. Believed to have information on *S. nigrovaria*. (364) *Pria* (*Stelidota*) *clavicornis* is described as a new species.

- 030 Fattig, P. W. 1937. The Coleoptera or beetles of Georgia (V). Entomol. News, 48(9):250-255.

*Stelidota geminata*, *S. octomaculata*, and *S. strigosa* were collected in Georgia. Localities are given. (252)

- 031 Fauvel, A. 1903. Faune analytique des Coléoptères de la Nouvelle-Calédonie. Rev. d'Entomol., 22:203-378. [Analytical fauna of the Coleoptera fauna of New Caledonia.]

This article contains information on *Stelidota balanomorpha* (misspelled *balanophorae*) and *S. lifuana*. The host of *S. balanomorpha* is listed as *Balanophora fungosa*. (302, 303)

- 032 Frost, S. W. and H. Dietrich. 1929. Coleoptera taken from bait traps. Ann. Entomol. Soc. Amer., 22(3):427-437.

The authors present data on *Stelidota geminata* collection frequency from molasses bait stations in Pennsylvania. (428, 434)

- 033 Funt, R. C., W. C. Harding, and L. O. Weaver. 1977. Growing strawberries in Maryland. Coop. Ext. Serv., Univ. of Maryland, EB 216. 18 pp.

The bulletin mentions a small brown sap beetle (probably *Stelidota geminata*) which infests ripe strawberry fruits as a pest. (13)

- 034 Gertz, R. F. 1968a. The biology and control of *Stelidota geminata* (Say). Proc., N. Cent. Branch, Entomol. Soc. Amer., 23(1):52. (Abstract)

The author reports that *Stelidota geminata* is a new pest of strawberry fruit in Michigan and caused a multi-million dollar loss in 1966. Preliminary data are reported on biology, host range, and attractants.

- 035 Gertz, R. F. 1968b. *Stelidota geminata* (Coleoptera: Nitidulidae): biology and means of control on strawberries in Michigan. Michigan State Univ., Ph.D. dissertation. 72 pp.

Data are presented on rearing, biology, feeding behavior, host range, attractants, and chemical control of *S. geminata*.

- 036 Gibson, W. W. and J. L. Carrillo-S. 1959. Lista de insectos en la coleccion entomologica de la Oficina de Estudios Especiales, S.A.G. Secretaria de Agricultura y Ganaderia, Oficina de Estudios Especiales, Mexico. Folleto Misc. 9. 254 pp.

*Stelidota octomaculata* is in the collection from rotten apples from Ohio, U.S.A. Determination of species was by N. E. Good of Philadelphia, Pennsylvania. (92, 219)

- 037 Gillogly, L. R. 1962a. New species of *Stelidota* from Venezuela (Coleoptera: Nitidulidae). Bol. Soc. Venezuela Cienc. Nat., 23(101):40-48.

*Stelidota disticha* and *S. guacharensis* are described as new species. Illustrations and collection data are included.

- 038 Gillogly, L. R. 1962b. Insects of Micronesia. Coleoptera: Nitidulidae. B. P. Bishop Mus., Honolulu, Hawaii, 16(4):1-188.

*Stelidota alternata* is described as a new species. An illustration is given. A description and illustration are given for *S. nigrovaria*. Geographical distribution is given for both species. (182-184)

- 039 Gillogly, L. R. 1965. A key to the genera of the subfamily Nitidulinae (Nitidulidae, Coleoptera) and description of a new genus and a new species. Calif. Occas. Pap. State Bur. Entomol., 8:1-24.

A key is given to the world Nitidulinae including *Stelidota*. (13, 24)

- 040 Grouvelle, A. 1890. Viaggio di Leonardo Fea in Birmania e regioni vicine. 23. Nitidulidae 1. Annali del Museo Civico di Storia Naturale Giacomo Doria (Genova) 29:120-126.

*Stelidota nigrovaria* is mentioned in the text. This text was not seen.

- 041 Grouvelle, A. H. 1891. Voyage de M. E. Simon au Venezuela (Decembre 1887 - Avril 1888). mem. 14. Nitidulidae, Monotomidae. Ann. Soc. Entomol. France, 60:313-316. [The voyage of M. E. Simon to Venezuela (December 1887 - April 1888).]

*Stelidota marginata* is described as a new species. (314) An illustration is given. (316)

- 042 Grouvelle, A. H. 1892. Clavicornes de Bengale. mem. 2. Liste. Ann. Entomol. Belg., 36:60-61. [Clavicornia of Bengal.]

No copy obtained. Believed to have information on *Stelidota multiguttata*.

- 043 Grouvelle, A. H. 1893. Voyage de M. E. Simon à l'île de Ceylan (janvier-fevrier 1892). Nitidulidae, Temnochilidae, Colydiidae, Rhysodidae & Cucujidae. Ann. Soc. Entomol. France, 62:383-384. [Voyage of M. E. Simon to the Isle of Ceylon.]

*Stelidota multiguttata* is listed as being found in Ceylon. (384)

- 044 Grouvelle, A. H. 1899. Descriptions de Clavicornes d'Afrique et de la région Malgache. 2 mem. Ann. Soc. Entomol. France, 68:136-185. [Descriptions of the Clavicornia from Africa and Malagasy Republic (Madagascar).]

*Stelidota clavicornis* is made synonymous with *Pria affinis* Reitter. (144) *S. costulata* is described as a new species. (137)

- 045 Grouvelle, A. H. 1902. Supplement a la liste des Coleopteres de la Guadeloupe de M. M. Fieutiaus et Salle. Ann. Soc. Entomol. France, 71:756-757. [Supplement to the list of Coleoptera of Guadeloupe of M. M. Fieutiaus et Salle.]

*Stelidota thoracica*, *S. geminata*, and *S. chontalensis* are listed as being collected in Guadeloupe. Geographical distribution is given. (757)

- 046 Grouvelle, A. H. 1903. Descriptions de Clavicornes de Nouvelle-Caledonie. Rev. d'Entomol. France, 22:174-203. [Descriptions of Clavicornia of New Caledonia.]

*Stelidota lifuana* is described as a new species. (174)

- 047 Grouvelle, A. H. 1906a. Quelques clavicornes nouveaux de la Republique Argentine recueillis par M. Charles Brunch. Rev. Mus. La Plata, 12:121-133. [Some new clavicornia of the Republic of Argentina collected by M. Charles Brunch.]

*Stelidota meridionalis* and *S. trimaculata* are described as new species. (122-123) Date of publication may be 1905.

- 048 Grouvelle, A. H. 1906b. Clavicornes nouveaux du Musec civique de Genes. Ann. Mus. Civ. Stor. Nat. Genova, 42:308-333. [New clavicornia of the city museum of Genoa.]

*Stelidota vicina* is described as a new species from Argentina. (332)

- 049 Grouvelle, A. H. 1908. Coleopteres de la region Indienne. Rhysodidae, Trogo-sitidae, Nitidulidae, Colydiidae, Cucujidae. Ann. Soc. Entomol. France, 77:315-495. [Coleoptera from the Indian Region.]

A key is given for the Nitidulidae collected in India including *Stelidota*. (339)

*Stelidota nigrovaria* and *S. multiguttata* are listed and Indian distribution is given. (361)

- 050 Grouvelle, A. H. 1913a. Coleopterorum Catalogus. Byturidae and Nitidulidae. Section 56. W. Junk, Berlin, Germ., 14(1):1-223.

The text lists 37 species of *Stelidota*. They are: *aequalis*, *alternans*, *balanomorpha*, *bugabensis*, *championi*, *chontalensis*, *clavigera*, *coenosa*, *costulata*, *curta*, *didyma*, *explanata*, *extranea*, *ferruginea*, *fortis*, *geminata*, *lifuana*, *marginata*, *meridionalis*, *metabola*, *multiguttata*, *nigrovaria*, *octomaculata*, *orientalis*, *ovalis*, *pallens*, *rubipes*, *runderata*, *sexguttata*, *signata*, *solitaria*, *stictica*, *strigosa*, *thoracica*, *trimaculata*, *vicina*, and *zealandica*. References and geographical distribution are given. (128-130)

- 051 Grouvelle, A. H. 1913b. Insects of the Percy Sladen Trust expedition. 1905. Coleoptera: Nitidulidae, Heteroceridae. Trans. Linn. Soc. Series 2, Zool.; 16:93-166.

*Stelidota explanata* is described as a new species. An illustration is given for the adult. Distribution is given. (108-109)

- 052 Grouvelle, A. H. 1916. Nitidulidae (Coleopteres) des Philippines recoltés par C. F. Baker. Philipp. J. Sci., 11:313-315. [Nitidulidae of the Philippines collected by C. F. Baker.]

*Stelidota octonata* is described as a new species. (313)

- 053 Gyllenahl, L. 1808. (In Schönherr. Synonymia insectum, oder: Versuch einer Synonymia aller bisher bekannten Insecten; nach Fabricii Systema Eleutheretorum geordnet.

Part 2. Vol. 1. 424 pp. [Insect synonymy, or: An attempt at the synonymy of all known insects arranged according to Fabricius Systema Eleutheretorum.]

No copy obtained. Believed to have information on *Stelidota strigosa* and *S. lusca*.

- 054 Hamilton, J. 1895. Catalogue of the Coleoptera of southwestern Pennsylvania, with notes and descriptions. Trans., Amer. Entomol. Soc., 22:317-381.

*Stelidota geminata* and *S. octomaculata* were collected in southwestern Pennsylvania. (331) Host and collection data are given. (361)

- 055 Hatch, M. H. 1924. A list of Coleoptera from Charlevoix County, Michigan. Papers Mich. Acad. Sci. Arts and Letters, 4:543-586.

*Stelidota octomaculata* is mentioned. (573)

- 056 Headstrom, R. 1977. The beetles of America. A. S. Barnes and Co., New York, N. Y. 488 pp.

A brief description and illustration of the elytra are given for *Stelidota geminata*. (247)

- 057 Henshaw, S. 1885. List of the Coleoptera of America, North of Mexico. Amer. Entomol. Soc., Philadelphia, Pa. 62 pp.  
*Stelidota geminata*, *S. octomaculata*, and *S. strigosa* are listed. (58)
- 058 Hinton, H. E. 1945. A monograph of beetles associated with stored products. Brit. Mus. Nat. Hist., 1(8):1-433.  
The author lists *Stelidota geminata* as being recorded from stored rice in the southern United States, but does not provide referecne. (79) Most likely from Douglas 1941. (2)
- 059 Hisamatsu, S. 1953. The insect fauna of Mt. Ishizuchi and Omogo Valley Iyo, Japan. The Nitidulidae. Trans., Shikoku Entomol. Soc., 3:139-143.  
The author concludes that *Stelidota hattorii* is a synonym for *Ipidia variolosa*. (140)
- 060 Hisamatsu, S. 1966. *Stelidota octusis* Reitter new to Japan. Trans., Shikoku Entomol. Soc., 8:134.  
*S. octusis* was reported from Tochige Prefecture in 1935.
- 061 Horn, G. H. 1879. Revision of the Nitidulidae of the United States. Trans., Amer. Entomol. Soc., 7:267-336.  
A key to the genera of Nitidulidae found in the United States, including *Stelidota*, is given. (287) The characters of the genus *Stelidota* and a key are given to *S. geminata*, *S. octomaculata*, and *S. strigosa*. Horn places *S. biseriata* as a synonym of *S. geminata*. (304) Horn did not recognize *S. ferruginea* Reitter of the southeastern U. S.
- 062 Hubbard, H. G. and E. A. Schwarz. 1878. Coleoptera of Florida and Michigan. Proc., Amer. Phil. Soc., 17:358-669.  
*Stelidota geminata*, *S. octomaculata*, and *S. strigosa* were collected in Florida. (447) One species of *Stelidota* is listed from Michigan. (634)
- 063 Jacquilin-DuVal, P.N.C. 1856. Coleopteros: (In Sagra. Historie physique, politique et naturelle de l'Ile de Cuba. Animaux articulés, insectes.) Paris. 136 pp. [Coleoptera. In Sagra. Physical, political, and natural history of the Island of Cuba. Jointed animals, insects.]  
*Stelidota coenosa* and *S. ruderata* are listed. Collection data and habitat are given. (42-43)
- 064 Jantz, O. I., R. F. Gertz, and M. T. Wells, Jr. 1967. Automobile paint effective as an insect attractant. Science, 156 (3777):946-947.  
*Stelidota geminata* was attracted to automobile primer paint in Michigan.
- 065 Jelinek, J. 1965. The paleartic species of genera *Ipidia* Er. and *Stelidota* Er. (Coleoptera: Nitidulidae). Acta Entomol. Bohemslov., 62(3):210-223.

Distinguishing characters of the genus *Stelidota* are revised. The tropical genus is represented in the Palaearctic by *S. multiguttata*. Description and distribution of *S. geminata* and *S. multiguttata* are given. Taxonomic data are presented for the following species of *Stelidota*: *multiguttata*, *geminata*, *strigosa*, *marginata*, and *coenosa*. The author places *S. octusis* in the *Ipidia* as *I. sexguttata - octusis*. *Stelidota sexguttata* is synonymized with *I. sexguttata sexguttata*. *Stelidota sibirica* and *S. hattorii* are placed in *Ipidia*.

- 066 Jelinek, J. 1967. An interesting species group of the genus *Epuraea* from Africa and Madagascar (Coleoptera: Nitidulidae). *Acta Entomol. Bohemoslov.*, 64(2): 112-121.

The species *Epuraeanella costata* (Schaufuss) from Madagascar is placed in *Stelidota*. (120)

- 067 Johnson, C. W. 1930. A list of the insect fauna of Nantucket, Massachusetts. Nantucket M. Mitchell Assoc., Nantucket, Mass. 3(2):1-74.

*Stelidota geminata* was collected in Nantucket. (53)

- 068 Kirk, V. M. 1969. A list of beetles of South Carolina. Part I. South Carolina Agr. Exp. Sta., Bull. 1033. 124 pp.

*Stelidota geminata*, *S. octomaculata*, and *S. strigosa* were collected in South Carolina. Location, habitat, and hosts are given. (72-73)

- 069 Kirk, V. M. 1970. A list of beetles of South Carolina. Part 2. South Carolina Agr. Exp. Sta., Bull. 1038. 117 pp.

*Stelidota geminata*, *S. octomaculata*, and *S. strigosa* were collected in South Carolina. Location, habitat, and hosts are given. (69)

- 070 Kirsch, T. F. W. 1873. Beitrage zur Kenntniss der Peruvianischen Käferfauna auf Dr. Abendroth's Sammlungen basiert. *Berl. Entomol. Z.*, 17:121-152. [Contributions to the knowledge of the Peruvian beetle fauna based on Dr. Abendroth's collection.]

*Stelidota metabola* and *S. thoracica* are described as new species. (141-142)

- 071 Kôno, H. 1940. Die Nitiduliden und Cucujiden in Tannen-und Fichtenwald in Japan. *Inst. Mats.*, 14:56-62. [The nitidulids and cucujids of the fir and spruce forest in Japan.]

The author describes *Stelidota hattorii* as a new species. (57-58)

- 072 LeConte, J. L. 1859. The complete writings of Thomas Say on entomology of North America. Estes and Lauriat, Boston, Mass. 2:1-814.

The author gives Say's original description of *Nitidula geminata* and *N. octomaculata* and places them in the genus *Stelidota*. (287)

- 073 LeConte, J. L. 1861. Classification of the Coleoptera of North America. Smithsonian Inst. Misc. Collect. 136. 208 pp.

No copy obtained. Believed to have information on *Stelidota*.



- 074 LeConte, J. L. and G. H. Horn. 1883. Classification of the Coleoptera of North America. Smithsonian Inst. Misc. Collect. 507. 567 pp.
- A key is given to the genera of Nitidulidae, including *Stelidota*, found in North America. (150)
- 075 Leng, C. W. 1920. Catalogue of the Coleoptera of America, North of Mexico. J. D. Sherman, Jr., Mt. Vernon, N. Y. 470 pp.
- Stelidota geminata*, *S. octomaculata*, and *S. strigosa* are listed. *S. biseriata* is given as a synonym for *S. geminata* and *S. lusca* is listed as a synonym of *S. strigosa*. Distribution records are given. (196)
- 076 Leng, C. W. and A. J. Mutchler. 1917. Supplement to preliminary list of the Coleoptera of the West Indies. Bull. Amer. Mus. Nat. Hist., 37:191-220.
- Two species of *Stelidota* were mentioned from Puerto Rico. They were *S. geminata* and *S. ruderata*. (203)
- 077 Leonard, M. D. 1928. A list of the insects of New York with a list of spiders and certain other allied groups. Cornell Univ. Agr. Exp. Sta., Mem. 101, Ithaca, N. Y. 1121 pp.
- Stelidota geminata* and *S. octomaculata* were collected in New York. Collection location and host are given. (337)
- 078 Lindegren, J. E. and G. T. Okumura. 1973. Pathogens from economically important nitidulid beetles. ARS W-9, Western Region, U. S. Dep. Agr. 7 pp.
- Locality, date, host, and pathogen are given for *Stelidota geminata* and *Stelidota* sp. (6)
- 079 Loding, H. P. 1945. Catalogue of the beetles of Alabama. Monogr. 11, Geol Surv. of Alabama, Univ. of Ala. 172 pp.
- Stelidota geminata*, *S. octomaculata*, and *S. strigosa* were collected in Alabama. Collection location and host or bait are given. (75)
- 080 McMullen, L. H., C. R. Drake, R. D. Shenefelt, and J. E. Kuntz. 1955. Long distance transmission of oak wilt in Wisconsin. Plant Dis. Report., 39(1):51-53.
- Stelidota octomaculata* is incriminated as a possible vector of oak wilt disease in Wisconsin. (52)
- 081 McMullen, L. H. and R. D. Shenefelt. 1961. Nitidulidae collected from banana bait traps in Wisconsin. Trans., Wis. Acad. Sci., Arts, and Letters, 50:233-237.
- Stelidota geminata*, *S. octomaculata*, and *S. strigosa* were collected from banana bait stations. (234) Data are presented on population frequency of all three species. (236-237)
- 082 McMullen, L. H., R. D. Shenefelt, and J. E. Kuntz. 1960. A study of insect transmission of oak wilt in Wisconsin. Trans., Wis. Acad. Sci., Arts and Letters, 49:73-84.

*Stelidota octomaculata* was collected on artificial wound on healthy oak trees. Experimental transmission of oak wilt was demonstrated with *S. octomaculata*.

- 083 Melsheimer, F. E. 1853. Catalogue of the described Coleoptera of the United States. Smithsonian Inst., Washington, D. C. 174 pp.

*Stelidota geminata* is listed as found in the United States. (41)

- 084 Moennich, H. 1939. List of Coleoptera found living in and on various fungi. Bull. Brooklyn Entomol. Soc., 34(3):155-157.

*Stelidota geminata* was collected on *Lactarius piperatus* (Fries). The author erroneously placed *S. geminata* within the family Dermestidae. (155)

- 085 Moennich, H. 1941. Supplement list of Coleoptera found living in and on various fungi. Bull. Brooklyn Entomol. Soc., 36(1):20-22.

The author collected *S. geminata* from the fungus, *Panus strigosus*. (22)

- 086 Montrouzier, P. 1860. Essai sur la Fauna Entomologique de la Nouvelle - Calédonie. Ann. Soc. Entomol. France Ser. 3, 8:229-308. [Essay on the Entomological fauna of New Caledonia.]

The author describes *S. balanomorpha* as a new species in the genus *Nitidula*. (263)

- 087 Murray, A. 1864. Monograph of the family of Nitidulariae. Part I. Trans. Linnean Soc. of London, 24:211-414.

The author gives hybridization and introduction as an explanation of the closeness in appearance of *Stelidota didyma* and *S. orphana* to *S. geminata*. The previous species occur in Madagascar. A similar explanation for the close likeness of the Caribbean species is presented using *S. ruderata* as the parent. (228-229)

- 088 Muesebeck, C. F. W., K. V. Krombein and H. K. Townes. 1951. Hymenoptera of America North of Mexico, Synoptic Catalog. U.S. Dept. Agr., Agr. Monograph No. 2. U.S. Govt. Printing Office. 1420 pp.

*Cryptoserphus obsoletus* (Say) is listed as a parasite of *Stelidota strigosa*. (665)

- 089 Neel, W. W., B. D. Glick, L. L. May, and R. P. True. 1967. Attractiveness to Nitidulidae (Coleoptera) of natural attractants of tree and fungus origin supplemented with vinegar and water in an Appalachian hardwood forest. J. Econ. Entomol., 60(4):1104-1109.

*Stelidota geminata* adults were collected at bait stations in West Virginia. (1106) *Stelidota geminata* was one of the first nitidulids to appear at the bait stations. (1107)

- 090 Parsons, C. T. 1943. A revision of Nearctic Nitidulidae (Coleoptera). Bull. Mus. Comp. Zool., 92(3):119-278.

*Stelidota geminata*, *S. octomaculata*, and *S. strigosa* are given as being the only nearctic species of *Stelidota*. Distribution, description, and key are included. (208-211) The author erroneously places *S. biseriata* as a synonym for *S. octomaculata*. (211)

- 091 Parsons, C. T. 1972. On the mesosternum of some Nitidulidae (Coleoptera), with a key to new world *Amphicrossus*. Coleop. Bull., 26(3):103-115.

The mesosternum and part of the metasternum of *S. geminata* are illustrated. (105, 108) A key of the Nitidulidae using the mesosternum as the diagnostic character is provided. Other *Stelidota* mentioned are: *octomaculata*, *ferruginea* (= *strigosa* of Horn (1879) and Parsons (1943) in error), *strigosa* (= *strigosa* of Erichson, Reitter, and Sharp), *clavigera* Sharp, *chontalensis* Sharp, *solitaria* Sharp, and *multiguttata*. (107) Actually, the recognition of *S. ferruginea* was Parsons' way of restoring the species. *S. ferruginea* is the small species from southeastern U. S. and *S. strigosa* refers to a species occurring in Mexico, Central and South America.

- 092 Payne, J. A. and E. D. King. 1970. Coleoptera associated with pig carrion. Entomol. Monthly Mag., 105:224-232.

*Stelidota geminata* and *S. strigosa* were found to be associated with pig carrion in South Carolina. (231)

- 093 Pirone, D. 1974. Ecology of necrophilous and carpophilous Coleoptera in a southern New York woodland (phenology, aspection, trophic and habitat preferences). Ph.D. Thesis, Fordham University, New York, N.Y.

This publication was not seen. According to Shubeck *et al.* 1977, one specimen of *Stelidota geminata* was taken at carrion in New York. (13)

- 094 Poinar, G. O., Jr. 1979. Nematodes for biological control of insects. CRC Press, Inc. Boca Raton, Fla. 277 pp.

The nematode *Heterogonema ovomaculis* was reported as a parasite of the adults of *Stelidota* sp. in Madagascar. (80-82) Also *Stelidota geminata* is listed in the host range of the nematode, *Neoplectama carpocapsae*. (151)

- 095 Randell, R. and R. H. Meyer. 1977. Major insect and mite pests of strawberries in Illinois. Pages 45-51 in J. W. Corter, ed. Proc., 1977 Illinois Strawberry School, Univ. of Illinois, Coop. Ext. Serv., Urbana-Champaign. 54 pp.

Describes *Stelidota geminata*, the type of damage it causes, and gives brief information about its biology and control. (49)

- 096 Reitter, E. 1873. Systematische Eitheilung der Nitidularien. Verhandl. Naturforsch. Ver. Brünn. Part 1. 12:3-194. [The systematic classification of the Nitidulidae.] Also published in 1874 by W. Burkart of Brünn.

A key is given for the *Stelidota* species: *metabola*, *octomaculata*, *alternans* (as a synonym of *octomaculata*), *thoracica*, *ferruginea*, *geminata*, *coenosa*, *runderata*, *biseriata*, *strigosa*, and *rubripes*. (12-16) *Stelidota ferruginea*, *S. biseriata*, and *S. rubripes* are described as new species. Geographical distribution is given.

- 097 Reitter, E. 1874. *Beschreibungen neuerer Käfer-Arten* nebst synonymischen Notizen. Verhandl. Zool.-Bot. Ges. Wien., 24:509-528. [The descriptions of new beetle species along with synonymic notes.]

*Stelidota aequalis* is described as a new species. Description and geographical distribution are given. (510)

- 098 Reitter, E. 1875. *Beschreibungen neuer Nitidulidae* aus der Sammlung der Herren Deyrolle in Paris. Verhandl. Naturforsch. Ver. Brünn., 13:99-122. [Descriptions of the new Nitidulidae from the collection of Mr. Deyrolle.]

*Stelidota didyma* is listed and description and distribution are given. (104)

- 099 Reitter, E. 1877a. *Japanische Nitidulidae*, Deut. Entomol. Z., 21:109-133. [Japanese Nitidulidae.]

*Stelidota multiguttata* and *S. dilatimanus* are described as new species. (110-111) *S. dilatimanus* is later transferred to *Pocadites*.

- 100 Reitter, E. 1877b. *Synonymische Bemerkungen*. Deut. Entomol. Z., 21:191 [Synonymical observations.]

*Stelidota sexguttata* is synonymized with *S. biguttata*. (191)

- 101 Reitter, E. 1879. *Verzeichniss der von H. Christoph in Ost-Siberien gesammelten clavicornier, etc.* Deut. Entomol. Z., 23:209-226. [Catalogue of the clavicorns collected by H. Christoph in eastern Siberia, etc.]

*Stelidota sibirica* (216) and *Ipidia variolosa* (219) are described as new species.

- 102 Reitter, E. 1884-1885. *Die Nitiduliden Japans*. Wiener Entomol. Z., 3:257-272, 299-302; 4:141-142. [The Nitidulidae of Japan.]

A key to the Nitidulidae of Japan included *Stelidota multiguttata*. (262) Collection data are presented in volume 4. (142) The genus *Pocadites* is erected and *S. dilatimanus* is placed in it. (264-267) The author places *S. sibirica* in *Ipidia*. (262)

- 103 Reitter, E. 1919. *Bestimmungs-Tabelle der Coleopteren-Familien: Nitidulidae und Byturidae* aus Europa und der angrenzenden Ländern, Verhandl. Ver Brünn., 56:1-104. [Key to coleopteran families: Nitidulidae and Byturidae of Europe and bordering countries.]

The author describes *Stelidota octusis* (76) and places *Ipidia sibirica* in the genus *Stelidota*. (77)

- 104 Remillet, M. and D. Van Waerebeke. 1972. *Particularites du cycle heterogonique de deux nematode Tylenchida parasites de Nitidulidae*. C. R. Acad. Sci. Paris, 275:1507-1509. [Details of the heterogonic cycle of two parasitic Tylenchida nematodes of Nitidulidae.]

Two nematodes from Malagasy Republic (Madagascar) were studied. One is parasitic on *Stelidota* sp., the other is parasitic on *Carpophilus* sp.

- 105 Remillet, M. and D. Van Waerebeke. 1978. Description et cycle biologique de *Heteromorphotylenchus stelidotae* N. G., n. sp. et de *Heteromorphotylenchus carpophilii* n. sp. (Nematoda: Allantonematidae). *Nematologica*, 24:222-238. [Description and biological cycle of the *Heteromorphotylenchus stelidotae* N. G., n. sp. and *H. carpophilii* n. sp. (Nematoda: Allantonematidae).]

The nematode *Heteromorphotylenchus stelidotae* is reported being parasitic on *Stelidota remellei*. Biology and description are given for *H. stelidotae*.

- 106 Riley, C. V. and L. O. Howard. 1892. Some of the bred parasitic Hymenoptera in the national collection. *Insect Life*, 4:122-126.

*Stelidota strigosa* larvae are parasitized by *Proctotrypes (=Cryptoserphus) obsoletus* (Say). (126)

- 107 Sahlberg, R. F. 1834. *Bull. Mosc.*, 7:273.

No copy obtained. According to Jelinek 1965, contains original description of *Nitidula sexguttata*.

- 108 Say, T. 1825. Descriptions of new species of Coleopterous insects inhabiting the United States. *J. Acad. Nat. Sci., Philadelphia, Part I.*, 5:160-204.

Say described *Nitidula geminata* and *N. octomaculata* as new species. Collection localities are given. (181)

- 109 Schaufuss, C. 1891. Beitrag zur Kaferfauna Madagascar's. *Tijdschr. Entomol.*, 34:1-35. [Contribution to the beetle fauna of Madagascar.]

*Omosiphora costata* is described as a new species. (6)

- 110 Schaufuss, C. 1916. *Calwer's Käferbuch Einführung in die Kenntnis der Käfer Europas*. E. Schweizerbart'sche Verlagbuchhandlung, Stuttgart. 709 pp. [Calwer's Beetle Book. Introduction to knowledge of European beetles.]

A key is given for the nitidulid genera in Europe. *Stelidota* is among the genera listed. (422)

- 111 Schall, Mrs. G. and C. V. Riley. 1884. Strawberry fruit beetles. *Bull. Dep. Agr. Entomol.*, Vol. 4.

This is the first record of *Stelidota* damaging strawberries. The crop was entirely destroyed by these sap beetles according to Mrs. Schall, Montgomery Co., Pa. The beetles came in as the berries began to turn color and ate small holes in them. The damage is typical of *Stelidota* damage seen today. They were identified as *Stelidota strigosa*; however, most likely they were *Stelidota geminata*. *S. geminata* is the common strawberry pest in Pennsylvania and all neighboring states.

- 112 Seidlitz, von G. 1872. *Fauna Baltica. Die Käfer der Ostseeprovinzen Russlands*. Ed. 1. Leifrugz. Dorpat. [Baltic Fauna. The beetles of the eastern provinces of Russia.]

No copy obtained. Believed that author placed *Nitidula sexguttata* in *Ipidia*.

- 113 Seidlitz, von G. 1888. Fauna Baltica. Die Käfer der deutschen Ostseeprovinzen Russlands. Ed. 2. Königsborg, Germ. p. [Baltic fauna. The beetles of German east provinces of Russia.]

The author assigned the *Ipidia sexguttata* to the genus *Stelidota*. (214)

- 114 Sharp, D. 1890. Biologia Centrali-Americana, Insects, Coleoptera. Part I. Vol. 20. 717 pp.

The four species of *Stelidota* previously known from Central America were: *strigosa*, *rubripes*, *geminata*, and *alternans*. New species of *Stelidota* were: *pallens*, *solitaria*, *ovalis*, *stictica*, *bugabensis*, *fortis*, *clavigera*, *chontalensis*, *championi*, and *extranea*. Descriptions are given. (310-315)

- 115 Shubeck, P. P., N. M. Downie, R. L. Wenzel, and S. B. Peck. 1977. Species composition of carrion beetles in a mixed-oak forest. Wm. L. Hutcheson Mem. Forest Bull., 4(1):12-17.

One *Stelidota geminata* was taken at carrion in this study. (13 and 14)

- 116 Smith, J. B. 1910. Annual report of the New Jersey State Museum, including a report of the insects of New Jersey. MacCrellish and Quigley, Trenton, N. J. 888 pp.

*Stelidota geminata*, *S. octomaculata*, and *S. strigosa* are listed. Habitat and state distribution are given for each species. (272)

- 117 Stierlin, W. G. 1877. Mitt. Schw. Entomol. Ges. Vol., 5:479.

No copy obtained. Believed to have information on *S. biguttata*.

- 118 Spornraft, K. 1967. Clavicornia. In Freude, Harde and Lohse, Die Käfer Mitteleuropa, Goeke and Evers Krefeld, Germ. 310 pp.

Mentions that *Stelidota sexguttata* is in the genus *Ipidia*. A key to *Ipidia* is given. (20-89)

- 119 Sutherland, D. W. S. (Chairman). 1978. Common names of insects and related organisms (1978 Revision). Entomological Society of America, College Park, Md. 132 pp.

The Committee on Common Names of Insects of the Entomological Society of America lists the approved common name "strawberry sap beetles" for *Stelidota geminata* (Say). (37, 79)

- 120 USDA. 1959. Coop. Econ. Insect Report. 9(51):1050.<sup>2/</sup>

---

2

U. S. Dep. of Agriculture, Cooperative Economic Insect Report, began with Vol. 1, No. 1, July 31, 1951. It contains reports of insect occurrence and abundance, particularly of economic pests, from information supplied by Survey Entomologists in the various states and by others. In 1976 it was replaced by Cooperative Plant Pest Report, Vol. 1, No. 1, Feb. 6, 1976, which, in addition, reports occurrence of plant diseases. Issued by Plant Protection and Quarantine Programs, Animal and Plant Health Inspection Service, U. S. Dep. of Agriculture.

High populations of *Stelidota geminata* were found in dropped sapote and figs in San Diego County, Calif. It is believed that the beetle is established in California.

- 121 USDA. 1963. Coop. Econ. Insect Report. 13(9):152, (33):953.

*Stelidota geminata* with other species of Nitidulidae were occasional pests of sweet corn in Virginia (152), and were numerous on decaying melons in Chilton County, Ala. (953)

- 122 USDA. 1964. Coop. Econ. Insect Report. 14(24):616.

*Stelidota geminata* were infesting strawberry fruit in Montgomery County, Md.

- 123 USDA. 1965. Coop. Econ. Insect Report. 15(7):83

*Stelidota strigosa* were taken from hand-pollinated sweet corn in Dade County, Fla.

- 124 USDA. 1966. Coop. Econ. Insect Report. 16(26):611, (28):677, (31):758, (37):906.

A *Stelidota* sp. abundant in ripe strawberries in southwestern Michigan was *S. geminata*, not *S. octomaculata* as first thought. Damage was so heavy that one-third of crop was not harvested. (611, 677) Larvae and adults were later collected from blackberry fruit (758) and feeding was reported on peaches and pears. (906)

- 125 USDA. 1967. Coop. Econ. Insect Report. 17(12):205, 211, (19):389.

*Stelidota geminata* adults were collected from tomato fruit in Michigan (205), were reported damaging melons in Berrien County, Michigan (211), and were reported found on strawberries (389) in Michigan.

- 126 USDA. 1968. Coop. Econ. Insect Report. 18(11):201, (24):525, (26):590.

*Stelidota geminata* first appear in southwestern Michigan strawberry fields about June 8. Organic phosphate baits gave good control. (201, 590) Migration from woodlots to strawberries was reported. (525)

- 127 USDA. 1970. Coop. Econ. Insect Report. 20(12):203.

Harvest of strawberry fruit was 90-95% complete in Michigan before migration of *Stelidota geminata* into strawberry planting began.

- 128 USDA. 1971. Coop. Econ. Insect Report. 21(14):227, (24):415.

Migration of *Stelidota geminata* into strawberry plantings coincided with harvest in Michigan. (227) Adults were collected in woodlots bordering strawberry fields on May 28. (415)

- 129 USDA. 1978. Coop. Plant Pest Report. 3(23):256.

*Stelidota geminata* damaged about 40.5 hectares of strawberry fruit in Indiana.

- 130 USDA. 1976. Paint lures insects. Agri. Res., 15:12.  
Two red acrylic paints attracted *Stelidota geminata* adults in Michigan.
- 131 Van Dyke, E. C. 1953. The Coleoptera of the Galapagos Islands. Occas. Papers Calif. Acad. Sci., No. 22. 181 pp.  
*Stelidota insularis* is described as a new species. Description and collection data are given. (62)
- 132 Vogt, G. B. 1950. Occurrence and records of Nitidulidae. Coleopt. Bull., 4(6):81-91.  
*Stelidota geminata* and *S. strigosa* were collected on oak sap flows in Maryland. Seasonal abundance is given. (85) *Stelidota geminata*, *S. strigosa*, and *S. octomaculata* were collected on other hosts in Maryland. (90)
- 133 Vogt, G. B. 1951. Occurrence and records of Nitidulidae. Coleopt. Bull., 5(1):4-11.  
*Stelidota geminata* and *S. strigosa* were collected on rotting orange fruit in Florida. (4) *Stelidota strigosa* and *S. geminata* were collected on rotten citrus fruit in Texas. (6)
- 134 Wankowicz, J. 1867. Notices sur divers Coleopteres. Ann. Soc. Entomol. France. Ser. 4, 7:249-255. [Notes on various Coleoptera.]  
The author describes *Ipidia integra* as a new species. (252)
- 135 Washburn, F. L. 1919. The Hymenoptera of Minnesota. 17th Rep. State Entomologist of Minn., Agri. Exp. Sta., Univ. Farm, St. Paul. Dec. 1918. pp. 145-237.  
*Serphus obsoletus* Say was reported to parasitize *Stelidota strigosa*. (197)
- 136 Weber, R. G. 1971. The biology of *Stelidota geminata* (Say) (Coleoptera: Nitidulidae). Univ. of Delaware, M. S. thesis. 42 pp.  
Data are presented on rearing, sex ratio, adult size, distribution, biology of all stages, and fecundity of *S. geminata*.
- 137 Weber, R. G. and W. A. Connell. 1975. *Stelidota geminata* (Say): studies of its biology (Coleoptera: Nitidulidae). Ann. Entomol. Soc. Amer., 68(4):649-653.  
Data are presented on biology, host range, and rearing of *S. geminata*. Illustrations of the final larval instar and pupa are given.
- 138 Weiss, H. B. and E. West. 1920. Fungus insects and their hosts. Proc. Biol. Soc. Wash., 33:1-20.  
*Stelidota geminata* was collected on *Polyporus chinoeus* (Fries) in New Jersey. (7)
- 139 Weiss, H. B. and E. West. 1921. Notes on fungous insects. Proc. Biol. Soc. Wash., 34:168.



The genus *Stelidota* is mentioned. (168)

- 140 Weiss, M. J. and R. N. Williams. 1978. Distribution of the strawberry sap beetles, *Stelidota geminata* (Say) (Coleoptera: Nitidulidae). Proc., N. C. Branch, Entomol. Soc. Amer., 33:55-56. (Abstract)

*Stelidota geminata* is found throughout the eastern, southern, and midwestern United States as well as southern California. In addition, this species is known from Canada, Mexico, Central America, West Indies, and South America. Distribution was determined from collection data from insect reference collections throughout North and South America.

- 141 Weiss, M. J., R. N. Williams, and C. C. Loan. 1978. Euphorine parasitism of *Stelidota geminata* (Say) (Coleoptera: Nitidulidae) with description of a new species of *Microctonus* Wesmael (Hymenoptera: Braconidae). Natur. Can., 105: 323-326.

*Microctonus nitidulidis* is reported being parasitic on adults of *Stelidota geminata*. Description and biology are given for *M. nitidulidis*.

- 142 Weiss, M. J. and R. N. Williams. 1979a. A new parasite of the strawberry sap beetle. OARDC, Ohio Report, 64(1):3-5.

Preliminary biology is reported for a new species of *Microctonus* (Hymenoptera: Braconidae) which is parasitic on adult *S. geminata*. Illustrations are given for the parasite.

- 143 Weiss, M. J. and R. N. Williams. 1979b. Swan song for sap beetle. Amer. Fruit Grower, 99(5):14,40.

Report on the discovery and preliminary findings of a *Microctonus* parasite of the strawberry sap beetle, *Stelidota geminata*.

- 144 Weiss, M. J. 1979. The biology of *Microctonus nitidulidis* Loan (Hymenoptera: Braconidae), a parasite of *Stelidota geminata* (Say) (Coleoptera: Nitidulidae). Ohio State Univ., M. S. thesis. 54 pp.

Data are presented on laboratory rearing, longevity, host range, and parasitization of a field population of *S. geminata* by *Microctonus nitidulidis*. The effects of parasitism on the host are discussed.

- 145 Williams, F. X. 1932. *Exallonyx philonthiphagus*, a new proctotrypid wasp in Hawaii, and its host. Proc., Hawaiian Entomol. Soc., 8:205-208.

*Cryptoserphus obsoletus* (Say) reported as a parasite of the larvae of *Stelidota strigosa*. (207)

- 146 Wolcott, G. N. 1948. The insects of Puerto Rico. J. Agr. of Univ. Puerto Rico, Rio Piedras, 32:1-975.

*Stelidota geminata*, *S. ruderata*, and *S. strigosa* were collected in Puerto Rico. (297)

## Index

This KWIC index was prepared on the computer from key words indicated on the index cards. Information may be found under author's name or by subjects, such as: species, hosts, attractants, behavior, biology, control, damage, disease transmission, distribution (state or country), natural enemies, or taxonomy.

To retrieve a citation, use the three digit number to the right of an index listing. This number will match one found in the text preceding the desired reference.

AEQUALIS ALTERNANS BUGABENSIS CHAMPIONI	006	1945
AEQUALIS ALTERNANS BALANOMORPHA BUGABENS	050	1913
AEQUALIS DISTRIBUTION* REITTER. AEQUALI	097	1874
AFRICA MADAGASCAR COSTATA* JELINEK. AFR	066	1967
AFRICA MALAGASY-REPUBLIC CLAVICORNIS COS	044	1899
ALABAMA GEMINATA OCTOMACULATA STRIGOSA H	079	1945
ALABAMA* USDA. GEMINATA SWEET-CORN VIRG	121	1963
ALGERIA LATA TAXONOMY* AUBE. EUROPE ALG	005	1850
ALTERNANS BALANOMORPHA BUGABENSIS CHAMPI	050	1913
ALTERNANS BUGABENSIS CHAMPIONI CHONTALEN	006	1945
ALTERNANS DIDYMA ORPHANA* ERICHSON. TAX	028	1843
ALTERNANS OCTOMACULATA THORACICA FERRUGI	096	1873
ALTERNANS PALLENS SOLITARIA OVALIS STICT	114	1890
ALTERNATA TAXONOMY NIGROVARIA DISTRIBUTI	038	1962
APPLE OCTOMACULATA* GIBSON. OHIO APPLE	036	1959
ARGENTINA GROUVELLE. MERIDIONALIS TRIMAC	047	1906
ARGENTINA* GROUVELLE. VICINA ARGENTINA*	048	1906
ARMSTRONG. CALIFORNIA GEMINATA DISTRIBUT	001	1976
ARNETT. TAXONOMY GEMINATA* ARNETT. TAXO	002	1960
ARROW. ORIENTALIS TAXONOMY* ARROW. ORIE	003	1900
ASHMEAD. NATURAL-ENEMIES PARASITE STRIGO	004	1893
ATTRACTANT GEMINATA PAINT MICHIGAN* JAN	064	1967
ATTRACTANTS BANANA* MCMULLEN. BANANA WI	081	1961
ATTRACTANTS CONTROL* GERTZ. GEMINATA BI	035	1968
ATTRACTANTS GEMINATA MICHIGAN PAINT* US	130	1976
ATTRACTANTS MOLASSES* FROST. GEMINATA A	032	1929
ATTRACTANTS WEST-VIRGINIA* NEEL. FUNGUS	089	1967
ATTRACTANTS* GERTZ. BIOLOGY CONTROL GEM	034	1968
AUBE. EUROPE ALGERIA LATA TAXONOMY* AUB	005	1850
BALANOMORPHA BUGABENSIS CHAMPIONI CHONTA	050	1913
BALANOMORPHA LIFUANA HOST* FAUVEL. NEW-	031	1903
BALANOMORPHA* MONTROUZIER. NEW-CALEDONI	086	1860
BANANA WISCONSIN GEMINATA OCTOMACULATA S	081	1961
BANANA* DAUGHERTY. SWEET-CORN NORTH-CAR	022	1966
BANANA* MCMULLEN. BANANA WISCONSIN GEMI	081	1961
BENGAL MULTIGUTTATA* GROUVELLE. BENGAL	042	1892
BIGUTTATA* REITTER. SEXGUTTATA BIGUTTAT	100	1877
BIGUTTATA* STIERLIN. BIGUTTATA* STIERL	117	1877
BIOLOGY CONTROL GEMINATA DAMAGE STRAWBER	034	1968
BIOLOGY CONTROL MICHIGAN BIOLOGY STRAWBE	035	1968
BIOLOGY GEMINATA DISTRIBUTION* WEBER. B	136	1971
BIOLOGY PARASITE GEMINATA NATURAL-ENEMIE	144	1979
BIOLOGY STRAWBERRY HOSTS ATTRACTANTS CON	035	1968
BISERIATA LUSCA DISTRIBUTION* LENG. GEM	075	1920

BISERIATA STRIGOSA RUBRIPES DISTRIBUTION	096	1873
BISERIATA* BLACKWELDER, OCTOMACULATA TA	007	1948
BISERIATA* HORN, UNITED-STATES DISTRIBUTION	061	1879
BISERIATA* PARSONS, GEMINATA OCTOMACULA	090	1943
BLACKBERRY PEACHES PEARS* USDA, STRAWBE	124	1966
BLACKWELDER, MEXICO CENTRAL-AMERICA WEST	006	1945
BLACKWELDER, OCTOMACULATA TAXONOMY BISER	007	1948
BLATCHLEY, INDIANA DISTRIBUTION GEMINATA	008	1910
BOVING, TAXONOMY GEMINATA HOST* BOVING,	009	1962
BRADLEY, TAXONOMY NORTH-AMERICA STELIDOT	010	1930
BRIMLEY, NORTH-CAROLINA GEMINATA OCTOMAC	011	1938
BROUN, NEW-ZEALAND TAXONOMY* BROUN, NEW	012	1880
BRUES, CONNECTICUT NATURAL-ENEMIES PARAS	013	1916
BUGABENSIS CHAMPIONI CHONTALENSIS CLAVIG	006	1945
BUGABENSIS CHAMPIONI CHONTALENSIS CLAVIG	050	1913
BUGABENSIS FORTIS CLAVIGERA CHONTALENSIS	114	1890
CALIFORNIA GEMINATA DISTRIBUTION ORANGE*	001	1976
CALIFORNIA* USDA, GEMINATA SAPOTE FIGS	120	1959
CANADA MEXICO CENTRAL-AMERICA WEST-INDIE	140	1978
CARRILLO-S, MEXICO STRIGOSA COCONUT-PALM	014	1966
CARRION NEW-JERSEY OAK-FOREST GERINATA*	115	1977
CARRION NEW-YORK GEMINATA* PIRONE, CARR	093	1974
CENTRAL-AMERICA WEST-INDIES SOUTH-AMERIC	006	1945
CENTRAL-AMERICA STRIGOSA RUBRIPES GEMINA	114	1890
CENTRAL-AMERICA WEST-INDIES SOUTH-AMERIC	140	1978
CEYLON MULTIGUTTATA* GROUVELLE, CEYLON	043	1893
CHAGON, QUEBEC TAXONOMY OCTOMACULATA* C	015	1916
CHAMPIONI CHONTALENSIS CLAVIGERA COENOSA	006	1945
CHAMPIONI CHONTALENSIS CLAVIGERA COENOSA	050	1913
CHAMPIONI EXTRANEA* SHARP, CENTRAL-AMER	114	1890
CHATTERJEE, INDIA MULTIGUTTATA NIGROVARI	016	1924
CHEVOLAT, CUBA GEMINATA COENOSA RUDERAT	017	1863
CHONTALENSIS CHAMPIONI EXTRANEA* SHARP,	114	1890
CHONTALENSIS CLAVIGERA COENOSA EXTRANEA	006	1945
CHONTALENSIS CLAVIGERA COENOSA COSTULATA	050	1913
CHONTALENSIS DISTRIBUTION* GROUVELLE, G	045	1902
CHONTALENSIS SOLITARIA MULTIGUTTATA* PA	091	1972
CHUJO, JAPAN SIBIRICA DILATIMANA* CHUJO	020	1960
CITRUS TEXAS* VOGT, GEMINATA STRIGOSA O	133	1951
CLAVICORNIS COSTULATA* GROUVELLE, AFRIC	044	1899
CLAVICORNIS* FAIRMAIRE, POLYNESIA NIGRO	029	1849
CLAVIGERA CHONTALENSIS SOLITARIA MULTIGU	091	1972
CLAVIGERA CHONTALENSIS CHAMPIONI EXTRANE	114	1890
CLAVIGERA COENOSA EXTRANEA FERRUGINEA FO	006	1945
CLAVIGERA COENOSA COSTULATA CURTA DIDYMA	050	1913
COCONUT-PALM* CARRILLO-S, MEXICO STRIGO	014	1966
COENOSA ALTERNANS DIDYMA ORPHANA* ERICH	028	1843
COENOSA COSTULATA CURTA DIDYMA EXPLANATA	050	1913
COENOSA EXTRANEA FERRUGINEA FORTIS GEMIN	006	1945
COENOSA OCTUSIS SEXGUTTATA SIBIRICA HATT	065	1965
COENOSA RUDERATA DISTRIBUTION* CHEVROLA	017	1863
COENOSA RUDERATA* JACQUILIN-DUVAL, CUBA	063	1856
COENOSA RUDERATA BISERIATA STRIGOSA RUBR	096	1873
CONNECTICUT NATURAL-ENEMIES PARASITE STR	013	1916
CONNELL, DELAWARE TAXONOMY GEMINATA HOST	018	1956
CONNELL, STELIDOTA-SPP, CORN* CONNELL,	019	1975

CONTROL GEMINATA DAMAGE STRAWBERRY HOSTS	034	1968
CONTROL MICHIGAN BIOLOGY STRAWBERRY HOST	035	1968
CONTROL WOODLOTS* USDA, GEMINATA MICHIG	126	1968
CONTROL* GERTZ, GEMINATA BIOLOGY CONTRO	035	1968
CORN* CONNELL, STELIDOTA-SPP, CORN* CO	019	1975
COSTATA* JELINEK, AFRICA MADAGASCAR COS	066	1967
COSTATA* SCHAUFUSS, MADAGASCAR COSTATA*	109	1891
COSTULATA CURTA DIDYMA EXPLANATA EXTRANE	050	1913
COSTULATA* GROUVELLE, AFRICA MALAGASY-R	044	1899
CROTCH, GEMINATA OCTOMACULATA NORTH-AMER	021	1880
CUBA COENOSA RUDERATA* JACQUILIN-DUVAL,	063	1856
CUBA GEMINATA COENOSA RUDERATA DISTRIBUT	017	1863
CURTA DIDYMA EXPLANATA EXTRANEA FERRUGIN	050	1913
DAMAGE STELIDOTA-SPP, BANANA* DAUGHERTY	022	1966
DAMAGE STRAWBERRY* FUNT, MARYLAND DAMAG	033	1977
DAMAGE STRAWBERRY HOSTS ATTRACTANTS* GE	034	1968
DAMAGE* RANDELL, ILLINOIS STRAWBERRY DA	095	1977
DAUGHERTY, SWEET-CORN NORTH-CAROLINA DAM	022	1966
DELAWARE TAXONOMY GEMINATA HOSTS* CONNE	018	1956
DIDYMA EXPLANATA EXTRANEA FERRUGINEA FOR	050	1913
DIDYMA ORPHANA GEMINATA MADAGASCAR RUDER	087	1864
DIDYMA ORPHANA* ERICHSON, TAXONOMY LUSC	028	1843
DIDYMA* REITTER, DIDYMA* REITTER, DIDY	098	1875
DILATIMANA* CHUJO, JAPAN SIBIRICA DILAT	020	1960
DILATIMANUS SIBIRICA* REITTER, MULTIGUT	102	1884
DILATIMAUS JAPAN* REITTER, MULTIGUTTATA	099	1877
DILLON, TAXONOMY GEMINATA* DILLON, TAXO	023	1964
DISEASE-TRANSMISSION WEST-VIRGINIA* DOR	024	1956
DISEASE-TRANSMISSION WISCONSIN* MCMULLE	080	1955
DISEASE-TRANSMISSION OAK OAK-WILT* MCMU	082	1960
DISTICHA GUACHARENSIS TAXONOMY* GILLOGL	037	1962
DISTRIBUTION AEQUALIS ALTERNANS BUGABENS	006	1945
DISTRIBUTION AEQUALIS ALTERNANS BALANOMO	050	1913
DISTRIBUTION GEMINATA OCTOMACULATA* BLA	008	1910
DISTRIBUTION GEMINATA OCTOMACULATA STRIG	061	1879
DISTRIBUTION ORANGE* ARMSTRONG, CALIFOR	001	1976
DISTRIBUTION RICE UNITED-STATES* HINTON	058	1945
DISTRIBUTION STRAWBERRY-SAP-BEETLE GEMIN	140	1978
DISTRIBUTION* BRIMLEY, NORTH-CAROLINA G	011	1938
DISTRIBUTION* CHATTERJEE, INDIA MULTIGU	016	1924
DISTRIBUTION* CHEVROLAT, CUBA GEMINATA	017	1863
DISTRIBUTION* CROTCH, GEMINATA OCTOMACU	021	1880
DISTRIBUTION* FATTIG, GEORGIA GEMINATA	030	1937
DISTRIBUTION* GILLOGLY, MICRONESIA ALTE	038	1962
DISTRIBUTION* GROUVELLE, GUADELOUPE THO	045	1902
DISTRIBUTION* GROUVELLE, INDIA NIGROVAR	049	1908
DISTRIBUTION* GROUVELLE, EXPLANATA DIST	051	1913
DISTRIBUTION* HENSHAW, GEMINATA OCTOMAC	057	1885
DISTRIBUTION* HISAMATSUA, OCTUSIS JAPAN	060	1966
DISTRIBUTION* LENG, GEMINATA OCTOMACULA	075	1920
DISTRIBUTION* REITTER, TAXONOMY METABOL	096	1873
DISTRIBUTION* REITTER, AEQUALIS DISTRIB	097	1874
DISTRIBUTION* SMITH, NEW-JERSEY GEMINAT	116	1910
DISTRIBUTION* WEBER, BIOLOGY GEMINATA D	136	1971
DORSEY, OAK-WILT GEMINATA DISEASE-TRANSM	024	1956
DOUGLAS, GEMINATA RICE* DOUGLAS, GEMINA	025	1941

DURY. OHIO GEMINATA OCTOMACULATA STRIGOS	026	1902
EASTHAM. NATURAL-ENEMIES PARASITE STRIGO	027	1929
ECUADOR* VAN-DYKE. GALAPAGOS-ISLANDS IN	131	1953
ERICHSON. TAXONOMY LUSCA STRIGOSA GEMINA	028	1843
EUROPE ALGERIA LATA TAXONOMY* AUBE. EUR	005	1850
EUROPE OCTUSIS SIBIRICA* REITTER. EUROP	103	1919
EUROPE TAXONOMY* SCHAUFUSS. EUROPE TAXO	110	1916
EXPLANATA DISTRIBUTION* GROUVELLE. EXPL	051	1913
EXPLANATA EXTRANEA FERRUGINEA FORTIS GEM	050	1913
EXTRANEA FERRUGINEA FORTIS GEMINATA MARG	006	1945
EXTRANEA FERRUGINEA FORTIS GEMINATA LIFU	050	1913
EXTRANEA* SHARP. CENTRAL-AMERICA STRIGO	114	1890
FAIRMAIRE. POLYNESIA NIGROVARIA CLAVICOR	029	1849
FATTIG. GEORGIA GEMINATA OCTOMACULATA ST	030	1937
FAUVEL. NEW-CALEDONIA BALANOMORPHA LIFUA	031	1903
FERRUGINEA FORTIS GEMINATA MARGINATA MER	006	1945
FERRUGINEA FORTIS GEMINATA LIFUANA MARGI	050	1913
FERRUGINEA GEMINATA COENOSA RUDERATA BIS	096	1873
FERRUGINEA STRIGOSA CLAVIGERA CHONTALENS	091	1972
FIGS CALIFORNIA* USDA. GEMINATA SAPOTE	120	1959
FLORIDA CITRUS TEXAS* VOGT. GEMINATA ST	133	1951
FLORIDA MICHIGAN GEMINATA OCTOMACULATA S	062	1878
FORTIS CLAVIGERA CHONTALENSIS CHAMPIONI	114	1890
FORTIS GEMINATA MARGINATA MERIDIONALIS M	006	1945
FORTIS GEMINATA LIFUANA MARGINATA MERIDI	050	1913
FROST. GEMINATA ATTRACTANTS MOLASSES* F	032	1929
FUNGI GEMINATA HOSTS* MOENNICH. FUNGI G	084	1939
FUNGI GEMINATA* MOENNICH. FUNGI GEMINAT	085	1941
FUNGUS GEMINATA HOST* WEISS. FUNGUS GEM	138	1920
FUNGUS HOST STELIDOTA-SP.* WEISS. FUNGU	139	1921
FUNGUS VINEGAR GEMINATA HOSTS ATTRACTANT	089	1967
FUNT. MARYLAND DAMAGE STRAWBERRY* FUNT.	033	1977
GALAPAGOS-ISLANDS INSULARIS ECUADOR* VA	131	1953
GEMINATA ALTERNANS PALLENS SOLITARIA OVA	114	1890
GEMINATA ATTRACTANTS MOLASSES* FROST. G	032	1929
GEMINATA BIOLOGY CONTROL MICHIGAN BIOLOG	035	1968
GEMINATA CHONTALENSIS DISTRIBUTION* GRO	045	1902
GEMINATA COENOSA RUDERATA DISTRIBUTION*	017	1863
GEMINATA COENOSA RUDERATA BISERIATA STRI	096	1873
GEMINATA DAMAGE STRAWBERRY HOSTS ATTRACT	034	1968
GEMINATA DISEASE-TRANSMISSION WEST-VIRGI	024	1956
GEMINATA DISTRIBUTION ORANGE* ARMSTRONG	001	1976
GEMINATA DISTRIBUTION RICE UNITED-STATES	058	1945
GEMINATA DISTRIBUTION* WEBER. BIOLOGY G	136	1971
GEMINATA HOST* BOVING. TAXONOMY GEMINAT	009	1962
GEMINATA HOST* WEBER. GEMINATA HOST* W	137	1975
GEMINATA HOST* WEISS. FUNGUS GEMINATA H	138	1920
GEMINATA HOSTS ATTRACTANTS WEST-VIRGINIA	089	1967
GEMINATA HOSTS* CONNELL. DELAWARE TAXON	018	1956
GEMINATA HOSTS* MOENNICH. FUNGI GEMINAT	084	1939
GEMINATA LIFUANA MARGINATA MERIDIONALIS	050	1913
GEMINATA MADAGASCAR RUDERATA* MURRAY. D	087	1864
GEMINATA MARGINATA MERIDIONALIS METABOLA	006	1945
GEMINATA MICHIGAN STRAWBERRY CONTROL WOO	126	1968
GEMINATA MICHIGAN PAINT* USDA. ATTRACTA	130	1976
GEMINATA MULTIGUTTATA STRIGOSA MARGINATA	065	1965

GEMINATA NATURAL-ENEMIES* WEISS. BIOLOG	144	1979
GEMINATA NORTH-AMERICA OCTOMACULATA FERR	091	1972
GEMINATA OCTOMACULATA* BLATCHLEY. INDIA	008	1910
GEMINATA OCTOMACULATA DISTRIBUTION* BRI	011	1938
GEMINATA OCTOMACULATA NORTH-AMERICA STRI	021	1880
GEMINATA OCTOMACULATA STRIGOSA* DURY. O	026	1902
GEMINATA OCTOMACULATA STRIGOSA DISTRIBUT	030	1937
GEMINATA OCTOMACULATA HOSTS* HAMILTON.	054	1895
GEMINATA OCTOMACULATA NORTH-AMERICA STRI	057	1885
GEMINATA OCTOMACULATA STRIGOSA BISERIATA	061	1879
GEMINATA OCTOMACULATA STRIGOSA* HUBBARD	062	1878
GEMINATA OCTOMACULATA STRIGOSA SOUTH-CAR	068	1969
GEMINATA OCTOMACULATA STRIGOA HOSTS* KI	069	1970
GEMINATA OCTOMACULATA* LECONTE. NORTH-A	072	1859
GEMINATA OCTOMACULATA UNITED-STATES STRI	075	1920
GEMINATA OCTOMACULATA HOSTS NEW-YORK* L	077	1926
GEMINATA OCTOMACULATA STRIGOSA HOSTS* L	079	1945
GEMINATA OCTOMACULATA STRIGOSA ATTRACTAN	081	1961
GEMINATA OCTOMACULATA STRIGOSA NORTH-AME	090	1943
GEMINATA OCTOMACULATA* SAY. UNITED-STAT	108	1825
GEMINATA OCTOMACULATA STRIGOSA DISTRIBUT	116	1910
GEMINATA OCTOMACULATA BLACKBERRY PEACHES	124	1966
GEMINATA PAINT MICHIGAN* JANTZ. ATTRACT	064	1967
GEMINATA PARASIE NATURAL-ENEMIES* WEISS	141	1978
GEMINATA RICE* DOUGLAS. GEMINATA RICE*	025	1941
GEMINATA RUDERATA COENOSA ALTERNANS DIDY	028	1843
GEMINATA RUDERATA WEST-INDIES* LENG. PU	076	1917
GEMINATA RUDERATA STRIGOSA* WOLCOTT. PU	146	1948
GEMINATA SAPOTE FIGS CALIFORNIA* USDA.	120	1959
GEMINATA STELIDOTA-SP. MADAGASCAR* POIN	094	1979
GEMINATA STRAWBERRY MARYLAND* USDA. GEM	122	1964
GEMINATA STRAWBERRY MICHIGAN WOODLOTS*	128	1971
GEMINATA STRAWBERRY INDIANA* USDA. GEMI	129	1978
GEMINATA STRIGOSA SOUTH-CAROLINA* PAYNE	092	1970
GEMINATA STRIGOSA OAK MARYLAND OCTOMACUL	132	1950
GEMINATA STRIGOSA ORANGE FLORIDA CITRUS	133	1951
GEMINATA SWEET-CORN VIRGINIA MELONS ALAB	121	1963
GEMINATA TOMATO STRAWBERRY MELONS* USDA	125	1967
GEMINATA UNITED-STATES* MELSHEIMER. GEM	083	1853
GEMINATA UNITED-STATES CANADA MEXICO CEN	140	1978
GEMINATA* ARNETT. TAXONOMY GEMINATA* A	002	1960
GEMINATA* DILLON. TAXONOMY GEMINATA* D	023	1964
GEMINATA* HEADSTROM. TAXONOMY GEMINATA*	056	1977
GEMINATA* JOHNSON. MASSACHUSETTS GEMINA	067	1930
GEMINATA* MOENNICH. FUNGI GEMINATA* MO	085	1941
GEMINATA* PIRONE. CARRION NEW-YORK GEMI	093	1974
GEMINATA* SUTHERLAND. STRAWBERRY-SAP-BE	119	1978
GEMINATA* USDA. STRAWBERRY GEMINATA* U	127	1970
GEMINATA* WEISS. PARASITE STRAWBERRY-SA	142	1979
GEMINATA* WEISS. NATURAL-ENEMIES PARASI	143	1979
GEORGIA GEMINATA OCTOMACULATA STRIGOSA D	030	1937
GERINATA* SHUBECK. CARRION NEW-JERSEY O	115	1977
GERTZ. BIOLOGY CONTROL GEMINATA DAMAGE S	034	1968
GERTZ. GEMINATA BIOLOGY CONTROL MICHIGAN	035	1968
GIBSON. OHIO APPLE OCTOMACULATA* GIBSON	036	1959
GILLOGLY. MICRONESIA ALTERNATA TAXONOMY	038	1962

GILLOGLY. TAXONOMY*	GILLOGLY. TAXONOMY*	039	1965
GILLOGLY. VENEZUELA DISTICHA GUACHARENSI		037	1962
GROUVELLE. AFRICA MALAGASY-REPUBLIC CLAV		044	1899
GROUVELLE. BENGAL MULTIGUTTATA*	GROUVEL	042	1892
GROUVELLE. CEYLON MULTIGUTTATA*	GROUVEL	043	1893
GROUVELLE. DISTRIBUTION AEQUALIS ALTERNA		050	1913
GROUVELLE. EXPLANATA DISTRIBUTION*	GROU	051	1913
GROUVELLE. GUADELOUPE THORACICA GEMINATA		045	1902
GROUVELLE. INDIA NIGROVARIA MULTIGUTTATA		049	1908
GROUVELLE. ITALY NIGROVARIA*	GROUVELLE.	040	1890
GROUVELLE. MERIDIONALIS TRIMACULATA*	AR	047	1906
GROUVELLE. NEW-CALEDONIA LIFUANA*	GROUV	046	1903
GROUVELLE. PHILIPPINES OCTONATA*	GROUVE	052	1916
GROUVELLE. VENEZUELA MARGINATA TAXONOMY*		041	1891
GROUVELLE. VICINA ARGENTINA*	GROUVELLE.	048	1906
GUACHARENSIS TAXONOMY*	GILLOGLY. VENEZU	037	1962
GUADELOUPE THORACICA GEMINATA CHONTALENS		045	1902
GYLLENHAL. STRIGOSA LUSCA*	GYLLENHAL. S	053	1808
HAMILTON. PENNSYLVANIA GEMINATA OCTOMACU		054	1895
HATCH. MICHIGAN OCTOMACULATA*	HATCH. MI	055	1924
HATTORII*	HISAMATSUA. JAPAN HATTORII*	059	1953
HATTORII*	JELINEK. GEMINATA MULTIGUTTAT	065	1965
HATTORII*	KONO. JAPAN HATTORII*	071	1940
HEADSTROM. TAXONOMY GEMINATA*	HEADSTROM	056	1977
HENSHAW. GEMINATA OCTOMACULATA NORTH-AME		057	1885
HINTON. GEMINATA DISTRIBUTION RICE UNITE		058	1945
HISAMATSUA. JAPAN HATTORII*	HISAMATSUA.	059	1953
HISAMATSUA. OCTUSIS JAPAN DISTRIBUTION*		060	1966
HORN. UNITED-STATES DISTRIBUTION GEMINAT		061	1879
HOST STELIDOTA-SP.*	WEISS. FUNGUS HOST	139	1921
HOST*	BOVING. TAXONOMY GEMINATA HOST*	009	1962
HOST*	FAUVEL. NEW-CALEDONIA BALANOMORPH	031	1903
HOST*	WEBER. GEMINATA HOST*	137	1975
HOST*	WEISS. FUNGUS GEMINATA HOST*	138	1920
HOSTS ATTRACTANTS*	GERTZ. BIOLOGY CONTR	034	1968
HOSTS ATTRACTANTS CONTROL*	GERTZ. GEMIN	035	1968
HOSTS ATTRACTANTS WEST-VIRGINIA*	NEEL.	089	1967
HOSTS NEW-YORK*	LEONARD. GEMINATA OCTOM	077	1926
HOSTS PATHOGENS NATURAL-ENEMIES NEMATODES		078	1973
HOSTS*	CONNELL. DELAWARE TAXONOMY GEMIN	018	1956
HOSTS*	HAMILTON. PENNSYLVANIA GEMINATA	054	1895
HOSTS*	KIRK. GEMINATA OCTOMACULATA STRI	068	1969
HOSTS*	KIRK. SOUTH-CAROLINA GEMINATA OC	069	1970
HOSTS*	LODING. ALABAMA GEMINATA OCTOMAC	079	1945
HOSTS*	MOENNICH. FUNGI GEMINATA HOSTS*	084	1939
HOSTS*	VOGT. GEMINATA STRIGOSA OAK MARY	132	1950
HUBBARD. FLORIDA MICHIGAN GEMINATA OCTOM		062	1878
ILLINOIS STRAWBERRY DAMAGE*	RANDELL. IL	095	1977
INDIA MULTIGUTTATA NIGROVARIA DISTRIBUTI		016	1924
INDIA NIGROVARIA MULTIGUTTATA DISTRIBUTI		049	1908
INDIANA DISTRIBUTION GEMINATA OCTOMACULA		008	1910
INDIANA*	USDA. GEMINATA STRAWBERRY INDI	129	1978
INSULARIS ECUADOR*	VAN-DYKE. GALAPAGOS-	131	1953
INTEGRA*	WANKOWICZ. INTEGRA*	134	1867
ITALY NIGROVARIA*	GROUVELLE. ITALY NIGR	040	1890
JACQUILIN-DUVAL. CUBA COENOSA RUDERATA*		063	1856

JANTZ. ATTRACTANT GEMINATA PAINT MICHIGA	064	1967
JAPAN DISTRIBUTION* HISAMATSUA. OCTUSIS	060	1966
JAPAN HATTORII* HISAMATSUA. JAPAN HATTO	059	1953
JAPAN HATTORII* KONO. JAPAN HATTORII*	071	1940
JAPAN SIBIRICA DILATIMANA* CHUJO. JAPAN	020	1960
JAPAN* REITTER. MULTIGUTTATA DILATIMAUS	099	1877
JELINEK. AFRICA MADAGASCAR COSTATA* JEL	066	1967
JELINEK. GEMINATA MULTIGUTTATA STRIGOSA	065	1965
JOHNSON. MASSACHUSETTS GEMINATA* JOHNSO	067	1930
KIRK. GEMINATA OCTOMACULATA STRIGOSA SOU	068	1969
KIRK. SOUTH-CAROLINA GEMINATA OCTOMACULA	069	1970
KIRSCH. PERU METABOLA THORACICA* KIRSCH	070	1873
KONO. JAPAN HATTORII* KONO. JAPAN HATTO	071	1940
LATA TAXONOMY* AUBE. EUROPE ALGERIA LAT	005	1850
LECONTE. NORTH-AMERICA GEMINATA OCTOMACU	072	1859
LECONTE. NORTH-AMERICA STELIDOTA-SPP.*	073	1861
LECONTE. NORTH-AMERICA STELIDOTA-SPP.*	074	1883
LENG. GEMINATA OCTOMACULATA UNITED-STATE	075	1920
LENG. PUERTO-RICO GEMINATA RUDERATA WEST	076	1917
LEONARD. GEMINATA OCTOMACULATA HOSTS NEW	077	1926
LIFUANA HOST* FAUVEL. NEW-CALEDONIA BAL	031	1903
LIFUANA MARGINATA MERIDIONALIS METABOLA	050	1913
LIFUANA* GROUVELLE. NEW-CALEDONIA LIFUA	046	1903
LINDEGREN. HOSTS PATHOGENS NATURAL-ENEMI	078	1973
LODING. ALABAMA GEMINATA OCTOMACULATA ST	079	1945
LUSCA DISTRIBUTION* LENG. GEMINATA OCTO	075	1920
LUSCA STRIGOSA GEMINATA RUDERATA COENOSA	028	1843
LUSCA* GYLLENHAL. STRIGOSA LUSCA* GYLL	053	1808
MADAGASCAR COSTATA* JELINEK. AFRICA MAD	066	1967
MADAGASCAR COSTATA* SCHAUFUSS. MADAGASC	109	1891
MADAGASCAR NEMATODE* REMILLET. NATURAL-	104	1972
MADAGASCAR RUDERATA* MURRAY. DIDYMA ORP	087	1864
MADAGASCAR* POINAR. NEMATODE PARASITE G	094	1979
MALAGASY-REPUBLIC CLAVICORNIS COSTULATA*	044	1899
MARGINATA COENOSA OCTUSIS SEXGUTTATA SIB	065	1965
MARGINATA MERIDIONALIS METABOLA OVALIS P	006	1945
MARGINATA MERIDIONALIS METABOLA MULTIGUT	050	1913
MARGINATA TAXONOMY* GROUVELLE. VENEZUEL	041	1891
MARYLAND DAMAGE STRAWBERRY* FUNT. MARYL	033	1977
MARYLAND OCTOMACULATA HOSTS* VOGT. GEMI	132	1950
MARYLAND* USDA. GEMINATA STRAWBERRY MAR	122	1964
MASSACHUSETTS GEMINATA* JOHNSON. MASSAC	067	1930
MCMULLEN. BANANA WISCONSIN GEMINATA OCTO	081	1961
MCMULLEN. OAK-WILT OCTOMACULATA DISEASE-	080	1955
MCMULLEN. OCTOMACULATA DISEASE-TRANSMISS	082	1960
MELONS ALABAMA* USDA. GEMINATA SWEET-CO	121	1963
MELONS* USDA. GEMINATA TOMATO STRAWBERR	125	1967
MELSHEIMER. GEMINATA UNITED-STATES* MEL	083	1853
MERIDIONALIS METABOLA OVALIS PALLENS RUB	006	1945
MERIDIONALIS METABOLA MULTIGUTTATA NIGRO	050	1913
MERIDIONALIS TRIMACULATA* ARGENTINA GRO	047	1906
METABOLA MULTIGUTTATA NIGROVARIA OCTOMAC	050	1913
METABOLA OCTOMACULATA ALTERNANS OCTOMACU	096	1873
METABOLA OVALIS PALLENS RUBRIPES RUDERAT	006	1945
METABOLA THORACICA* KIRSCH. PERU METABO	070	1873
MEXICO CENTRAL-AMERICA WEST-INDIES SOUTH	006	1945



MEXICO CENTRAL-AMERICA WEST-INDIES SOUTH	140	1978
MEXICO STRIGOSA COCONUT-PALM* CARRILLO-	014	1966
MICHIGAN BIOLOGY STRAWBERRY HOSTS ATTRAC	035	1968
MICHIGAN GEMINATA OCTOMACULATA STRIGOSA*	062	1878
MICHIGAN OCTOMACULATA* HATCH. MICHIGAN	055	1924
MICHIGAN PAINT* USDA. ATTRACTANTS GEMIN	130	1976
MICHIGAN STRAWBERRY CONTROL WOODLOTS* U	126	1968
MICHIGAN WOODLOTS* USDA. GEMINATA STRAW	128	1971
MICHIGAN* JANTZ. ATTRACTANT GEMINATA PA	064	1967
MICRONESIA ALTERNATA TAXONOMY NIGROVARIA	038	1962
MOENNICH. FUNGI GEMINATA HOSTS* MOENNIC	084	1939
MOENNICH. FUNGI GEMINATA* MOENNICH. FUN	085	1941
MOLASSES* FROST. GEMINATA ATTRACTANTS M	032	1929
MONTROUZIER. NEW-CALEDONIA BALANOMORPHA*	086	1860
MUESEBECK. PARASITE STRIGOSA* MUESEBECK	088	
MULTIGUTTATA DISTRIBUTION* GROUVELLE. I	049	1908
MULTIGUTTATA DILATIMATUS JAPAN* REITTER.	099	1877
MULTIGUTTATA DILATIMANUS SIBIRICA* REIT	102	1884
MULTIGUTTATA NIGROVARIA DISTRIBUTION* C	016	1924
MULTIGUTTATA NIGROVARIA OCTOMACULATA ORI	050	1913
MULTIGUTTATA STRIGOSA MARGINATA COENOSA	065	1965
MULTIGUTTATA* GROUVELLE. BENGAL MULTIGU	042	1892
MULTIGUTTATA* GROUVELLE. CEYLON MULTIGU	043	1893
MULTIGUTTATA* PARSONS. GEMINATA NORTH-A	091	1972
MURRAY. DIDYMA ORPHANA GEMINATA MADAGASC	087	1864
NATURAL-ENEMIES PARASITE STRIGOSA* ASHM	004	1893
NATURAL-ENEMIES PARASITE STRIGOSA* BRUE	013	1916
NATURAL-ENEMIES PARASITE STRIGOSA* EAST	027	1929
NATURAL-ENEMIES NEMATODES STELIDOTA-SP.*	078	1973
NATURAL-ENEMIES MADAGASCAR NEMATODE* RE	104	1972
NATURAL-ENEMIES NEMATODE REMELLETI* REM	105	1978
NATURAL-ENEMIES* RILEY. PARASITE NATURA	106	1892
NATURAL-ENEMIES STRIGOSA* WASHBURN. PAR	135	1919
NATURAL-ENEMIES* WEISS. GEMINATA PARASI	141	1978
NATURAL-ENEMIES GEMINATA* WEISS. PARASI	142	1979
NATURAL-ENEMIES PARASITE GEMINATA* WEIS	143	1979
NATURAL-ENEMIES* WEISS. BIOLOGY PARASIT	144	1979
NATURAL-ENEMIES STRIGOSA* WILLIAMS. PAR	145	1932
NEEL. FUNGUS VINEGAR GEMINATA HOSTS ATTR	089	1967
NEMATODE PARASITE GEMINATA STELIDOTA-SP.	094	1979
NEMATODE REMELLETI* REMILLET. NATURAL-E	105	1978
NEMATODE* REMILLET. NATURAL-ENEMIES MAD	104	1972
NEMATODES STELIDOTA-SP.* LINDEGREN. HOST	078	1973
NEW-CALEDONIA BALANOMORPHA LIFUANA HOST*	031	1903
NEW-CALEDONIA BALANOMORPHA* MONTROUZIER	086	1860
NEW-CALEDONIA LIFUANA* GROUVELLE. NEW-C	046	1903
NEW-JERSEY GEMINATA OCTOMACULATA STRIGOS	116	1910
NEW-JERSEY OAK-FOREST GERINATA* SHUBECK	115	1977
NEW-YORK GEMINATA* PIRONE. CARRION NEW-	093	1974
NEW-YORK* LEONARD. GEMINATA OCTOMACULAT	077	1926
NEW-ZEALAND TAXONOMY* BROUN. NEW-ZEALAN	012	1880
NIGROVARIA CLAVICORNIS* FAIRMAIRE. POLY	029	1849
NIGROVARIA DISTRIBUTION* CHATTERJEE. IN	016	1924
NIGROVARIA DISTRIBUTION* GILLOGLY. MICR	038	1962
NIGROVARIA MULTIGUTTATA DISTRIBUTION* G	049	1908
NIGROVARIA OCTOMACULATA ORIENTALIS OVALI	050	1913

NIGROVARIA*	GROUVELLE. ITALY	NIGROVARIA	040	1890		
NORTH-AMERICA	BISERIATA*	PARSONS. GEMIN	090	1943		
NORTH-AMERICA	GEMINATA	OCTOMACULATA*	LE	072	1859	
NORTH-AMERICA	OCTOMACULATA	FERRUGINEA	ST	091	1972	
NORTH-AMERICA	STELIDOTA*	BRADLEY. TAXON	010	1930		
NORTH-AMERICA	STRIGOSA	DISTRIBUTION*	CR	021	1880	
NORTH-AMERICA	STRIGOSA	DISTRIBUTION*	HE	057	1885	
NORTH-AMERICA	STELIDOTA-SPP.*	LECONTE.	073	1861		
NORTH-AMERICA	STELIDOTA-SPP.*	LECONTE.	074	1883		
NORTH-CAROLINA	GEMINATA	OCTOMACULATA	DIS	011	1938	
NORTH-CAROLINA	DAMAGE	STELIDOTA-SPP.	BAN	022	1966	
OAK MARYLAND	OCTOMACULATA	HOSTS*	VOGT.	132	1950	
OAK OAK-WILT*	MCMULLEN. OCTOMACULATA	DI	082	1960		
OAK-FOREST	GERINATA*	SHUBECK. CARRION	N	115	1977	
OAK-WILT	GEMINATA	DISEASE-TRANSMISSION	W	024	1956	
OAK-WILT	OCTOMACULATA	DISEASE-TRANSMISSI	080	1955		
OAK-WILT*	MCMULLEN. OCTOMACULATA	DISEAS	082	1960		
OCTOMACULATA	ALTERNANS	OCTOMACULATA	THOR	096	1873	
OCTOMACULATA	BLACKBERRY	PEACHES	PEARS*	124	1966	
OCTOMACULATA	DISTRIBUTION*	BRIMLEY. NOR	011	1938		
OCTOMACULATA	DISEASE-TRANSMISSION	WISCON	080	1955		
OCTOMACULATA	DISEASE-TRANSMISSION	OAK OA	082	1960		
OCTOMACULATA	FERRUGINEA	STRIGOSA	CLAVIGE	091	1972	
OCTOMACULATA	HOSTS*	HAMILTON. PENNSYLVA	054	1895		
OCTOMACULATA	HOSTS	NEW-YORK*	LEONARD. G	077	1926	
OCTOMACULATA	HOSTS*	VOGT. GEMINATA	STRI	132	1950	
OCTOMACULATA	NORTH-AMERICA	STRIGOSA	DIST	021	1880	
OCTOMACULATA	NORTH-AMERICA	STRIGOSA	DIST	057	1885	
OCTOMACULATA	ORIENTALIS	OVALIS	PALLENS	R	050	1913
OCTOMACULATA	STRIGOSA*	DURY. OHIO	GEMIN	026	1902	
OCTOMACULATA	STRIGOSA	DISTRIBUTION*	FAT	030	1937	
OCTOMACULATA	STRIGOSA	BISERIATA*	HORN.	061	1879	
OCTOMACULATA	STRIGOSA*	HUBBARD. FLORIDA	062	1878		
OCTOMACULATA	STRIGOSA	SOUTH-CAROLINA	HOS	068	1969	
OCTOMACULATA	STRIGOA	HOSTS*	KIRK. SOUTH	069	1970	
OCTOMACULATA	STRIGOSA	HOSTS*	LODING. AL	079	1945	
OCTOMACULATA	STRIGOSA	ATTRACTANTS	BANANA	081	1961	
OCTOMACULATA	STRIGOSA	NORTH-AMERICA	BISE	090	1943	
OCTOMACULATA	STRIGOSA	DISTRIBUTION*	SMI	116	1910	
OCTOMACULATA	TAXONOMY	BISERIATA*	BLACKW	007	1948	
OCTOMACULATA	THORACICA	FERRUGINEA	GEMINA	096	1873	
OCTOMACULATA	UNITED-STATES	STRIGOSA	BISE	075	1920	
OCTOMACULATA*	BLATCHLEY. INDIANA	DISTRI	008	1910		
OCTOMACULATA*	CHAGON. QUEBEC	TAXONOMY	O	015	1916	
OCTOMACULATA*	GIBSON. OHIO	APPLE	OCTOMA	036	1959	
OCTOMACULATA*	HATCH. MICHIGAN	OCTOMACUL	055	1924		
OCTOMACULATA*	LECONTE. NORTH-AMERICA	GE	072	1859		
OCTOMACULATA*	SAY. UNITED-STATES	TAXONO	108	1825		
OCTONATA*	GROUVELLE. PHILIPPINES	OCTONA	052	1916		
OCTUSIS	JAPAN	DISTRIBUTION*	HISAMATSUA.	060	1966	
OCTUSIS	SEXGUTTATA	SIBIRICA	HATTORII*	J	065	1965
OCTUSIS	SIBIRICA*	REITTER. EUROPE	OCTUS	103	1919	
OHIO	APPLE	OCTOMACULATA*	GIBSON. OHIO	A	036	1959
OHIO	GEMINATA	OCTOMACULATA	STRIGOSA*	DU	026	1902
ORANGE	FLORIDA	CITRUS	TEXAS*	VOGT. GEMI	133	1951
ORANGE*	ARMSTRONG. CALIFORNIA	GEMINATA	001	1976		

ORIENTALIS OVALIS PALLENS RUBIPES RUDERA	050	1913
ORIENTALIS TAXONOMY* ARROW, ORIENTALIS	003	1900
ORPHANA GEMINATA MADAGASCAR RUDERATA* M	087	1864
ORPHANA* ERICHSON, TAXONOMY LUSCA STRIG	028	1843
OVALIS PALLENS RUBIPES RUDERATA SOLITAR	006	1945
OVALIS PALLENS RUBIPES RUDERATA SEXGUTTA	050	1913
OVALIS STICTICA BUGABENSIS FORTIS CLAVIG	114	1890
PAINT MICHIGAN* JANTZ, ATTRACTANT GEMIN	064	1967
PAINT* USDA, ATTRACTANTS GEMINATA MICH	130	1976
PALLENS RUBIPES RUDERATA SEXGUTTATA SIGN	050	1913
PALLENS RUBIPES RUDERATA SOLITARIA STIC	006	1945
PALLENS SOLITARIA OVALIS STICTICA BUGABE	114	1890
PARASIE NATURAL-ENEMIES* WEISS, GEMINAT	141	1978
PARASITE GEMINATA STELIDOTA-SP, MADAGASC	094	1979
PARASITE GEMINATA* WEISS, NATURAL-ENEMI	143	1979
PARASITE GEMINATA NATURAL-ENEMIES* WEIS	144	1979
PARASITE NATURAL-ENEMIES* RILEY, PARASI	106	1892
PARASITE NATURAL-ENEMIES STRIGOSA* WASH	135	1919
PARASITE NATURAL-ENEMIES STRIGOSA* WILL	145	1932
PARASITE STRAWBERRY-SAP-BEETLE NATURAL-E	142	1979
PARASITE STRIGOSA* ASHMEAD, NATURAL-ENE	004	1893
PARASITE STRIGOSA* BRUES, CONNECTICUT N	013	1916
PARASITE STRIGOSA* EASTHAM, NATURAL-ENE	027	1929
PARASITE STRIGOSA* MUESEBECK, PARASITE	088	
PARSONS, GEMINATA OCTOMACULATA STRIGOSA	090	1943
PARSONS, GEMINATA NORTH-AMERICA OCTOMACU	091	1972
PATHOGENS NATURAL-ENEMIES NEMATOES STELI	078	1973
PAYNE, GEMINATA STRIGOSA SOUTH-CAROLINA*	092	1970
PEACHES PEARS* USDA, STRAWBERRY GEMINAT	124	1966
PEARS* USDA, STRAWBERRY GEMINATA OCTOMA	124	1966
PENNSYLVANIA GEMINATA OCTOMACULATA HOSTS	054	1895
PERU METABOLA THORACICA* KIRSCH, PERU M	070	1873
PHILIPPINES OCTONATA* GROUVELLE, PHILIP	052	1916
PIRONE, CARRION NEW-YORK GEMINATA* PIRO	093	1974
POINAR, NEMATODE PARASITE GEMINATA STELI	094	1979
POLYNESIA NIGROVARIA CLAVICORNIS* FAIRM	029	1849
PUERTO-RICO GEMINATA RUDERATA WEST-INDIE	076	1917
PUERTO-RICO GEMINATA RUDERATA STRIGOSA*	146	1948
QUEBEC TAXONOMY OCTOMACULATA* CHAGON, G	015	1916
RANDELL, ILLINOIS STRAWBERRY DAMAGE* RA	095	1977
REITTER, AEQUALIS DISTRIBUTION* REITTER	097	1874
REITTER, DIDYMA* REITTER, DIDYMA* REIT	098	1875
REITTER, EUROPE OCTUSIS SIBIRICA* REITT	103	1919
REITTER, MULTIGUTTATA DILATIMANUS JAPAN*	099	1877
REITTER, MULTIGUTTATA DILATIMANUS SIBIRI	102	1884
REITTER, SEXGUTTATA BIGUTTATA* REITTER,	100	1877
REITTER, SIBERIA SIBIRICA* REITTER, SIB	101	1879
REITTER, TAXONOMY METABOLA OCTOMACULATA	096	1873
REMELLETI* REMILLET, NATURAL-ENEMIES NE	105	1978
REMILLET, NATURAL-ENEMIES MADAGASCAR NEM	104	1972
REMILLET, NATURAL-ENEMIES NEMATODE REMEL	105	1978
RICE UNITED-STATES* HINTON, GEMINATA DI	058	1945
RICE* DOUGLAS, GEMINATA RICE* DOUGLAS,	025	1941
RILEY, PARASITE NATURAL-ENEMIES* RILEY,	106	1892
RUBIPES RUDERATA SEXGUTTATA SIGNATA SOLI	050	1913
RUBIPES DISTRIBUTION* REITTER, TAXONOM	096	1873

RUBRIPES GEMINATA ALTERNANS PALLENS SOLI	114	1890
RUBRIPES RUDERATA SOLITARIA STICTICA STR	006	1945
RUDERATA BISERIATA STRIGOSA RUBRIPES DIS	096	1873
RUDERATA COENOSA ALTERNANS DIDYMA ORPHAN	028	1843
RUDERATA DISTRIBUTION* CHEVROLAT. CUBA	017	1863
RUDERATA SEXGUTTATA SIGNATA SOLITARIA ST	050	1913
RUDERATA SOLITARIA STICTICA STRIGOSA THO	006	1945
RUDERATA STRIGOSA* WOLCOTT. PUERTO-RICO	146	1948
RUDERATA WEST-INDIES* LENG. PUERTO-RICO	076	1917
RUDERATA* JACQUILIN-DUVAL. CUBA COENOSA	063	1856
RUDERATA* MURRAY. DIDYMA ORPHANA GEMINA	087	1864
RUSSIA SEXGUTTATA* SEIDLITZ. RUSSIA SEX	112	1872
RUSSIA SEXGUTTATA* SEIDLITZ. RUSSIA SEX	113	1888
SAHLBERG. SEXGUTTATA* SAHLBERG. SEXGUTT	107	1834
SAPOTE FIGS CALIFORNIA* USDA. GEMINATA	120	1959
SAY. UNITED-STATES TAXONOMY GEMINATA OCT	108	1825
SCHALL. STRAWBERRY STRIGOSA* SCHALL. ST	111	1884
SCHAUFUSS. EUROPE TAXONOMY* SCHAUFUSS.	110	1916
SCHAUFUSS. MADAGASCAR COSTATA* SCHAUFUS	109	1891
SEIDLITZ. RUSSIA SEXGUTTATA* SEIDLITZ.	112	1872
SEIDLITZ. RUSSIA SEXGUTTATA* SEIDLITZ.	113	1888
SEXGUTTATA BIGUTTATA* REITTER. SEXGUTTA	100	1877
SEXGUTTATA SIBIRICA HATTORII* JELINEK.	065	1965
SEXGUTTATA SIGNATA SOLITARIA STICTICA ST	050	1913
SEXGUTTATA* SAHLBERG. SEXGUTTATA* SAHL	107	1834
SEXGUTTATA* SEIDLITZ. RUSSIA SEXGUTTATA	112	1872
SEXGUTTATA* SEIDLITZ. RUSSIA SEXGUTTATA	113	1888
SEXGUTTATA* SPORNRAFT SEXGUTTATA* SPOR	118	1967
SHARP. CENTRAL-AMERICA STRIGOSA RUBRIPES	114	1890
SHUBECK. CARRION NEW-JERSEY OAK-FOREST G	115	1977
SIBERIA SIBIRICA* REITTER. SIBERIA SIBI	101	1879
SIBIRICA DILATIMANA* CHUJO. JAPAN SIBIR	020	1960
SIBIRICA HATTORII* JELINEK. GEMINATA MU	065	1965
SIBIRICA* REITTER. SIBERIA SIBIRICA* R	101	1879
SIBIRICA* REITTER. MULTIGUTTATA DILATIM	102	1884
SIBIRICA* REITTER. EUROPE OCTUSIS SIBIR	103	1919
SIGNATA SOLITARIA STICTICA STRIGOSA THOR	050	1913
SMITH. NEW-JERSEY GEMINATA OCTOMACULATA	116	1910
SOLITARIA MULTIGUTTATA* PARSONS. GEMINA	091	1972
SOLITARIA OVALIS STICTICA BUGABENSIS FOR	114	1890
SOLITARIA STICTICA STRIGOSA THORACICA TR	006	1945
SOLITARIA STICTICA STRIGOSA THORACICA TR	050	1913
SOUTH-AMERICA DISTRIBUTION AEQUALIS ALTE	006	1945
SOUTH-AMERICA* WEISS. DISTRIBUTION STRA	140	1978
SOUTH-CAROLINA HOSTS* KIRK. GEMINATA OC	068	1969
SOUTH-CAROLINA GEMINATA OCTOMACULATA STR	069	1970
SOUTH-CAROLINA* PAYNE. GEMINATA STRIGOS	092	1970
SPORNRAFT SEXGUTTATA* SPORNRAFT SEXGUTT	118	1967
STELIDOTA* BRADLEY. TAXONOMY NORTH-AMER	010	1930
STELIDOTA-SP. MADAGASCAR* POINAR. NEMAT	094	1979
STELIDOTA-SP.* LINDEGREN. HOSTS PATHOGE	078	1973
STELIDOTA-SP.* WEISS. FUNGUS HOST STELI	139	1921
STELIDOTA-SPP. CORN* CONNELL. STELIDOTA	019	1975
STELIDOTA-SPP. BANANA* DAUGHERTY. SWEET	022	1966
STELIDOTA-SPP.* LECONTE. NORTH-AMERICA	073	1861
STELIDOTA-SPP.* LECONTE. NORTH-AMERICA	074	1883

STICTICA BUGABENSIS FORTIS CLAVIGERA CHO	114	1890
STICTICA STRIGOSA THORACICA TRIMACULATA	006	1945
STICTICA STRIGOSA THORACICA TRIMACULATA	050	1913
STIERLIN, BIGUTTATA* STIERLIN, BIGUTTAT	117	1877
STRAWBERRY CONTROL WOODLOTS* USDA, GEMI	126	1968
STRAWBERRY DAMAGE* RANDELL, ILLINOIS ST	095	1977
STRAWBERRY GEMINATA OCTOMACULATA BLACKBE	124	1966
STRAWBERRY GEMINATA* USDA, STRAWBERRY G	127	1970
STRAWBERRY HOSTS ATTRACTANTS* GERTZ, BI	034	1968
STRAWBERRY HOSTS ATTRACTANTS CONTROL* G	035	1968
STRAWBERRY INDIANA* USDA, GEMINATA STRA	129	1978
STRAWBERRY MARYLAND* USDA, GEMINATA STR	122	1964
STRAWBERRY MELONS* USDA, GEMINATA TOMAT	125	1967
STRAWBERRY MICHIGAN WOODLOTS* USDA, GEM	128	1971
STRAWBERRY STRIGOSA* SCHALL, STRAWBERRY	111	1884
STRAWBERRY* FUNT, MARYLAND DAMAGE STRAW	033	1977
STRAWBERRY-SAP-BEETLE GEMINATA* SUTHERL	119	1978
STRAWBERRY-SAP-BEETLE GEMINATA UNITED-ST	140	1978
STRAWBERRY-SAP-BEETLE NATURAL-ENEMIES GE	142	1979
STRIGOA HOSTS* KIRK, SOUTH-CAROLINA GEM	069	1970
STRIGOSA ATTRACTANTS BANANA* MCMULLEN,	081	1961
STRIGOSA BISERIATA* HORN, UNITED-STATES	061	1879
STRIGOSA BISERIATA LUSCA DISTRIBUTION*	075	1920
STRIGOSA CLAVIGERA CHONTALENSIS SOLITARI	091	1972
STRIGOSA COCONUT-PALM* CARRILLO-S, MEXI	014	1966
STRIGOSA DISTRIBUTION* CROTCH, GEMINATA	021	1880
STRIGOSA DISTRIBUTION* FATTIG, GEORGIA	030	1937
STRIGOSA DISTRIBUTION* HENSHAW, GEMINAT	057	1885
STRIGOSA DISTRIBUTION* SMITH, NEW-JERSE	116	1910
STRIGOSA GEMINATA RUDERATA COENOSA ALTER	028	1843
STRIGOSA HOSTS* LODING, ALABAMA GEMINAT	079	1945
STRIGOSA LUSCA* GYLLENHAL, STRIGOSA LUS	053	1808
STRIGOSA MARGINATA COENOSA OCTUSIS SEXGU	065	1965
STRIGOSA NORTH-AMERICA BISERIATA* PARSO	090	1943
STRIGOSA OAK MARYLAND OCTOMACULATA HOSTS	132	1950
STRIGOSA ORANGE FLORIDA CITRUS TEXAS* V	133	1951
STRIGOSA RUBRIPES DISTRIBUTION* REITTER	096	1873
STRIGOSA RUBRIPES GEMINATA ALTERNANS PAL	114	1890
STRIGOSA SOUTH-CAROLINA HOSTS* KIRK, GE	068	1969
STRIGOSA SOUTH-CAROLINA* PAYNE, GEMINAT	092	1970
STRIGOSA SWEET-CORN* USDA, STRIGOSA SWE	123	1965
STRIGOSA THORACICA TRIMACULATA VICINA*	006	1945
STRIGOSA THORACICA TRIMACULATA VICINA ZE	050	1913
STRIGOSA* ASHMEAD, NATURAL-ENEMIES PARA	004	1893
STRIGOSA* BRUES, CONNECTICUT NATURAL-EN	013	1916
STRIGOSA* DURY, OHIO GEMINATA OCTOMACUL	026	1902
STRIGOSA* EASTHAM, NATURAL-ENEMIES PARA	027	1929
STRIGOSA* HUBBARD, FLORIDA MICHIGAN GEM	062	1878
STRIGOSA* MUESEBECK, PARASITE STRIGOSA*	088	
STRIGOSA* SCHALL, STRAWBERRY STRIGOSA*	111	1884
STRIGOSA* WASHBURN, PARASITE NATURAL-EN	135	1919
STRIGOSA* WILLIAMS, PARASITE NATURAL-EN	145	1932
STRIGOSA* WOLCOTT, PUERTO-RICO GEMINATA	146	1948
SUTHERLAND, STRAWBERRY-SAP-BEETLE GEMINA	119	1978
SWEET-CORN NORTH-CAROLINA DAMAGE STELIDO	022	1966
SWEET-CORN VIRGINIA MELONS ALABAMA* USD	121	1963

SWEET-CORN* USDA. STRIGOSA SWEET-CORN*	123	1965
TAXONOMY BISERIATA* BLACKWELDER. OCTOMA	007	1948
TAXONOMY GEMINATA* ARNETT. TAXONOMY GEM	002	1960
TAXONOMY GEMINATA HOST* BOVING. TAXONOM	009	1962
TAXONOMY GEMINATA HOSTS* CONNELL. DELAW	018	1956
TAXONOMY GEMINATA* DILLON. TAXONOMY GEM	023	1964
TAXONOMY GEMINATA* HEADSTROM. TAXONOMY	056	1977
TAXONOMY GEMINATA OCTOMACULATA* SAY. UN	108	1825
TAXONOMY LUSCA STRIGOSA GEMINATA RUDERAT	028	1843
TAXONOMY METABOLA OCTOMACULATA ALTERNANS	096	1873
TAXONOMY NIGROVARIA DISTRIBUTION* GILLO	038	1962
TAXONOMY NORTH-AMERICA STELIDOTA* BRADL	010	1930
TAXONOMY OCTOMACULATA* CHAGON. QUEBEC T	015	1916
TAXONOMY* ARROW. ORIENTALIS TAXONOMY*	003	1900
TAXONOMY* AUBE. EUROPE ALGERIA LATA TAX.	005	1850
TAXONOMY* BROUN. NEW-ZEALAND TAXONOMY*	012	1880
TAXONOMY* GILLOGLY. VENEZUELA DISTICHA	037	1962
TAXONOMY* GILLOGLY. TAXONOMY* GILLOGLY	039	1965
TAXONOMY* GROUVELLE. VENEZUELA MARGINAT	041	1891
TAXONOMY* SCHAUFUSS. EUROPE TAXONOMY*	110	1916
TEXAS* VOGT. GEMINATA STRIGOSA ORANGE F	133	1951
THORACICA FERRUGINEA GEMINATA COENOSA RU	096	1873
THORACICA GEMINATA CHONTALENSIS DISTRIBU	045	1902
THORACICA TRIMACULATA VICINA* BLACKWELD	006	1945
THORACICA TRIMACULATA VICINA ZEALANDICA*	050	1913
THORACICA* KIRSCH. PERU METABOLA THORAC	070	1873
TOMATO STRAWBERRY MELONS* USDA. GEMINAT	125	1967
TRIMACULATA VICINA* BLACKWELDER. MEXICO	006	1945
TRIMACULATA VICINA ZEALANDICA* GROUVELL	050	1913
TRIMACULATA* ARGENTINA GROUVELLE. MERID	047	1906
UNITED-STATES CANADA MEXICO CENTRAL-AMER	140	1978
UNITED-STATES DISTRIBUTION GEMINATA OCTO	061	1879
UNITED-STATES STRIGOSA BISERIATA LUSCA D	075	1920
UNITED-STATES TAXONOMY GEMINATA OCTOMACU	108	1825
UNITED-STATES* HINTON. GEMINATA DISTRIB	058	1945
UNITED-STATES* MELSHEIMER. GEMINATA UNI	083	1853
USDA. ATTRACTANTS GEMINATA MICHIGAN PAIN	130	1976
USDA. GEMINATA SAPOTE FIGS CALIFORNIA*	120	1959
USDA. GEMINATA SWEET-CORN VIRGINIA MELON	121	1963
USDA. GEMINATA STRAWBERRY MARYLAND* USD	122	1964
USDA. GEMINATA TOMATO STRAWBERRY MELONS*	125	1967
USDA. GEMINATA MICHIGAN STRAWBERRY CONTR	126	1968
USDA. GEMINATA STRAWBERRY MICHIGAN WOODL	128	1971
USDA. GEMINATA STRAWBERRY INDIANA* USDA	129	1978
USDA. STRAWBERRY GEMINATA OCTOMACULATA B	124	1966
USDA. STRAWBERRY GEMINATA* USDA. STRAWB	127	1970
USDA. STRIGOSA SWEET-CORN* USDA. STRIGO	123	1965
VAN-DYKE. GALAPAGOS-ISLANDS INSULARIS EC	131	1953
VENEZUELA DISTICHA GUACHARENSIS TAXONOMY	037	1962
VENEZUELA MARGINATA TAXONOMY* GROUVELLE	041	1891
VICINA ARGENTINA* GROUVELLE. VICINA ARG	048	1906
VICINA ZEALANDICA* GROUVELLE. DISTRIBUT	050	1913
VICINA* BLACKWELDER. MEXICO CENTRAL-AME	006	1945
VINEGAR GEMINATA HOSTS ATTRACTANTS WEST-	089	1967
VIRGINIA MELONS ALABAMA* USDA. GEMINATA	121	1963
VOGT. GEMINATA STRIGOSA OAK MARYLAND OCT	132	1950

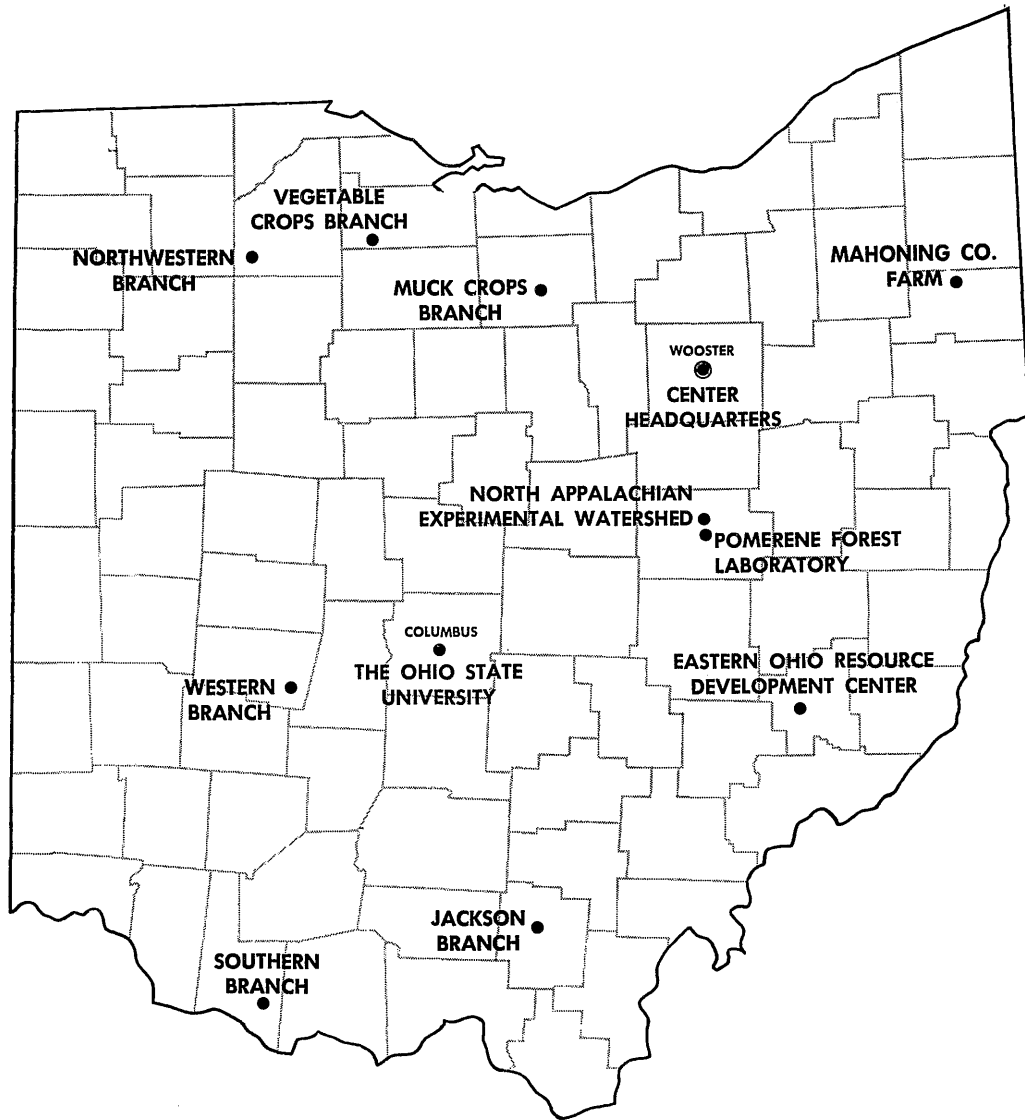
VOGT. GEMINATA STRIGOSA ORANGE FLORIDA C	133	1951
WANKOWICZ. INTEGRA* WANKOWICZ. INTEGRA*	134	1867
WASHBURN. PARASITE NATURAL-ENEMIES STRIG	135	1919
WEBER. BIOLOGY GEMINATA DISTRIBUTION* W	136	1971
WEBER. GEMINATA HOST* WEBER. GEMINATA H	137	1975
WEISS. BIOLOGY PARASITE GEMINATA NATURAL	144	1979
WEISS. DISTRIBUTION STRAWBERRY-SAP-BEETL	140	1978
WEISS. FUNGUS GEMINATA HOST* WEISS. FUN	138	1920
WEISS. FUNGUS HOST STELIDOTA-SP.* WEISS	139	1921
WEISS. GEMINATA PARASIE NATURAL-ENEMIES*	141	1978
WEISS. NATURAL-ENEMIES PARASITE GEMINATA	143	1979
WEISS. PARASITE STRAWBERRY-SAP-BEETLE NA	142	1979
WEST-INDIES SOUTH-AMERICA DISTRIBUTION A	006	1945
WEST-INDIES SOUTH-AMERICA* WEISS. DISTR	140	1978
WEST-INDIES* LENG. PUERTO-RICO GEMINATA	076	1917
WEST-VIRGINIA* DORSEY. OAK-WILT GEMINAT	024	1956
WEST-VIRGINIA* NEEL. FUNGUS VINEGAR GEM	089	1967
WILLIAMS. PARASITE NATURAL-ENEMIES STRIG	145	1932
WISCONSIN GEMINATA OCTOMACULATA STRIGOSA	081	1961
WISCONSIN* MCMULLEN. OAK-WILT OCTOMACUL	080	1955
WOLCOTT. PUERTO-RICO GEMINATA RUDERATA S	146	1948
WOODLOTS* USDA. GEMINATA MICHIGAN STRAW	126	1968
WOODLOTS* USDA. GEMINATA STRAWBERRY MIC	128	1971
ZEALANDICA* GROUVELLE. DISTRIBUTION AEQ	050	1913

This page intentionally blank.



This page intentionally blank.

# *The State Is the Campus for Agricultural Research and Development*



Ohio's major soil types and climatic conditions are represented at the Research Center's 12 locations.

Research is conducted by 15 departments on more than 7000 acres at Center headquarters in Wooster, eight branches, Pomerene Forest Laboratory, North Appalachian Experimental Watershed, and The Ohio State University.

Center Headquarters, Wooster, Wayne County: 1953 acres

Eastern Ohio Resource Development Center, Caldwell, Noble County: 2053 acres

Jackson Branch, Jackson, Jackson County: 502 acres

Mahoning County Farm, Canfield: 275 acres

Muck Crops Branch, Willard, Huron County: 15 acres

North Appalachian Experimental Watershed, Coshocton, Coshocton County: 1047 acres (Cooperative with Science and Education Administration/Agricultural Research, U. S. Dept. of Agriculture)

Northwestern Branch, Hoytville, Wood County: 247 acres

Pomerene Forest Laboratory, Coshocton County: 227 acres

Southern Branch, Ripley, Brown County: 275 acres

Vegetable Crops Branch, Fremont, Sandusky County: 105 acres

Western Branch, South Charleston, Clark County: 428 acres