

## A DOUBLE CRESCENT FROM WESTERN OHIO

by  
Chris Shoe  
Fletcher, OH

This fine double crescent bannerstone was found near Brock in Darke County, Ohio. It is made of banded slate and is of a variety of the type with widely separated prongs. The center portion of this type has a sharp ridge on each side.



Figure 1 (Shoe) Double crescent bannerstone found near Brock, Darke County, Ohio.

---

## THREE OHIO PIECES FROM MY COLLECTION

by  
Chris Shoe  
Fletcher, OH

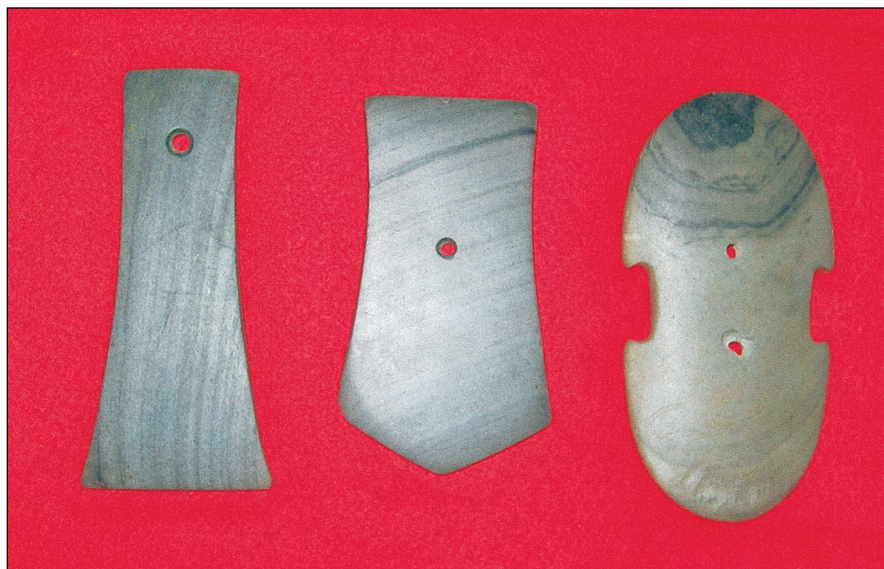


Figure 1 (Shoe) Three fine slate pieces — a trapezoidal pendant, a Hopewell pentagonal pendant, and an indented gorget — are all from Ohio. Each is made of banded slate, the predominant stone usually seen the three types.