

Beauty and Intrigue of the Overlooked: a photographic investigation of surfaces

Chloe Faherty: researcher
Robert Derr: advisor

INTRODUCTION

I will compare and contrast living and inert surfaces at the macro level through a photographic investigation. Complexity of structure, intensity of color and presence of texture are among the merits for which these surfaces will be studied. The exploration of these planes at a magnified level of detail will reveal the visual similarities and differences between them. It is easier now, thanks to advancements in the biological sciences, to factually determine if something is living or nonliving. The visual distinctions between these two categories of existence, however, may not be as obvious, especially with an intensified view of their surfaces. For example, a macro photograph of rust, a nonliving surface, looks eerily similar to one of lichen, a living surface; the main difference between the two being color. The line between these categorical labels "living" and "nonliving" may not be as finite and obvious as the general public would assume. This research aims to show how quickly and blindly the average individual moves through the world. As the researcher, I urge individuals to become more aware of their surroundings and to dismiss a popular misconception that the nonliving is inherently ugly. This research will manifest as sets of photographic diptychs, their side-by-side presentation further emphasizing the similarities and differences between living and nonliving surfaces. By presenting these diptychs as artwork, I am asserting that it is worth your time to look at them; I am asserting that the nonliving is worth your curiosity. By viewing these diptychs, I hope that individuals will realize their involuntary blindness and begin to question the beauty of their surroundings, both living and inert.

MATERIALS

- Camera: Nikon D800
- Lens: AF-S Micro Nikkor 105mm

LOCATIONS

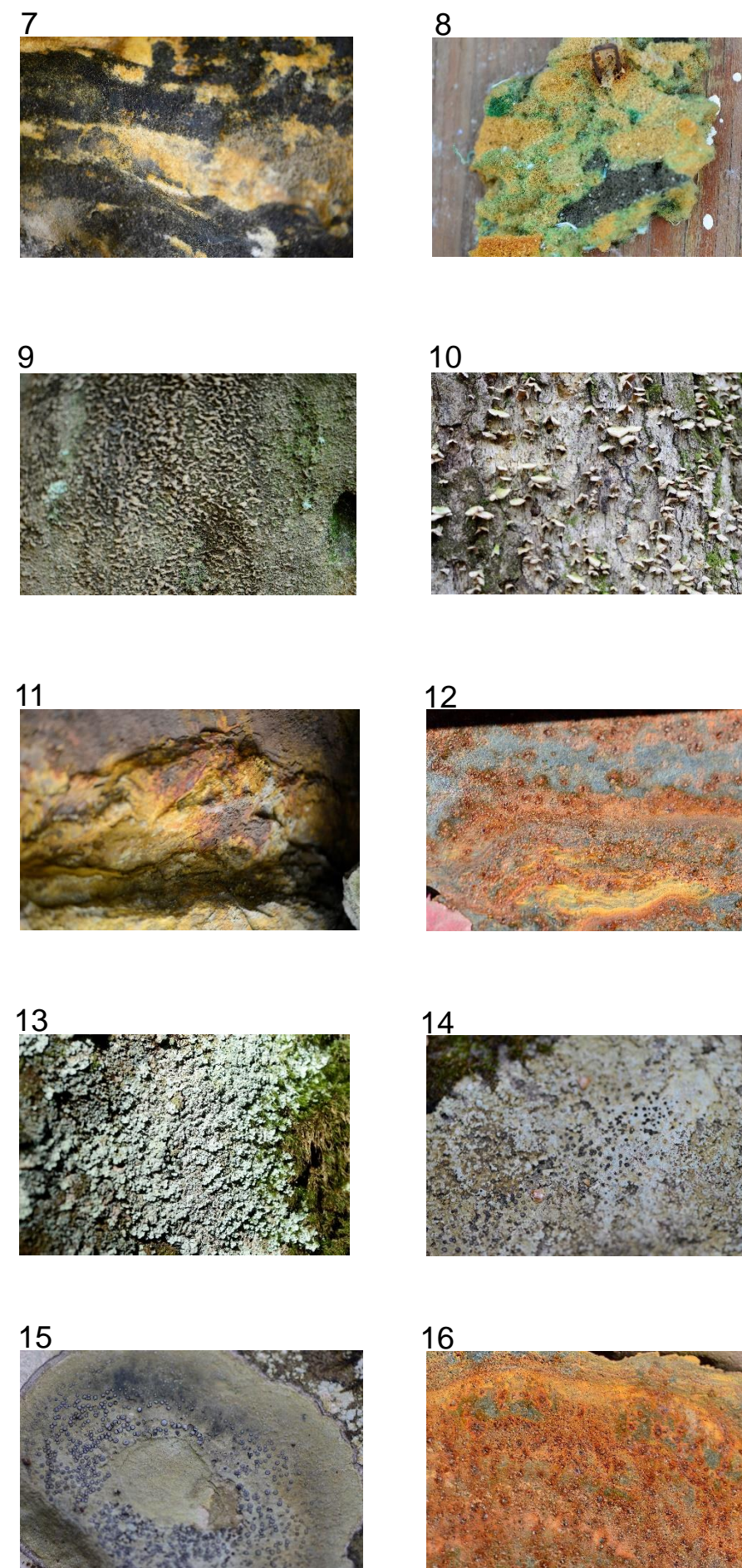
- Aegersold property, Johnstown, Ohio
- Creekside, Gahanna, Ohio
- Hocking Hills, Logan, Ohio
- Menchie's, Gahanna, Ohio
- Scioto River, Dublin, Ohio

RESULTS

These graphs reflect the survey data for the framed diptychs (1 - 6). This survey is ongoing from March 7, 2016 to March 30, 2016.



MORE COMPARISONS



CONCLUSIONS

Individuals who participated in the survey of photographs 1 to 6 averaged a correct identification of a surface as 'living' or 'nonliving' only 16.67% of the time. In other words, the average individual can correctly identify a living surface from a nonliving surface every 1 out of 6 times. The aim of this research was to show the general public that they are not as aware of their surroundings as they might assume. Many of these surfaces are seen on a daily basis by the majority of Ohioans. I hope the results from this project will open the eyes of the average individual so that they can increase their awareness of the various living, and inert, surfaces around them.

WANT TO PARTICIPATE?

Tell me if you think the photos in the framed diptychs (1 - 6) are living or nonliving!

Tell me if you think the comparisons on this poster (7 - 16) are living or nonliving!

ACKNOWLEDGEMENTS

I'd like to thank my project advisor, Robert Derr, my faculty advisor, Sergio Soave, my parents, Tim and Tami Faherty, and Chris Radcliff for their help and support to make this research project possible.