



Syddansk Universitet

Risk of epilepsy in opposite-sex and same-sex twins

A twin cohort study

Mao, Yanyan; Juel Ahrenfeldt, Linda ; Christensen, Kaare; Wu, Chunsen; Christensen, Jakob; Olsen, Jens; Sun, Yuelian

Published in:
Biology of Sex Differences

DOI:
[10.1186/s13293-018-0179-5](https://doi.org/10.1186/s13293-018-0179-5)

Publication date:
2018

Document version
Publisher's PDF, also known as Version of record

Document license
CC BY

Citation for published version (APA):
Mao, Y., Ahrenfeldt, L. J., Christensen, K., Wu, C., Christensen, J., Olsen, J., & Sun, Y. (2018). Risk of epilepsy in opposite-sex and same-sex twins: A twin cohort study. *Biology of Sex Differences*, 9, [21]. DOI: 10.1186/s13293-018-0179-5

General rights

Copyright and moral rights for the publications made accessible in the public portal are retained by the authors and/or other copyright owners and it is a condition of accessing publications that users recognise and abide by the legal requirements associated with these rights.

- Users may download and print one copy of any publication from the public portal for the purpose of private study or research.
- You may not further distribute the material or use it for any profit-making activity or commercial gain
- You may freely distribute the URL identifying the publication in the public portal ?

Take down policy

If you believe that this document breaches copyright please contact us providing details, and we will remove access to the work immediately and investigate your claim.

RESEARCH

Open Access



Risk of epilepsy in opposite-sex and same-sex twins: a twin cohort study

Yanyan Mao^{1,2}, Linda Juel Ahrenfeldt³, Kaare Christensen³, Chunsen Wu^{4,5}, Jakob Christensen⁶, Jørn Olsen^{7,8} and Yuelian Sun^{7*}

Abstract

Background: There is a complex interaction between female and male sex hormones and the risk of epilepsy. Whether prenatal exposure to higher levels of sex hormones affects the development of epilepsy in childhood or later in life is not well known. The sex hormone environment of fetuses may be affected by the sex of the co-twin. We estimated the risk of epilepsy for twins with an opposite-sex (OS) co-twin compared with twins with a same-sex (SS) co-twin.

Methods: From the Danish Twin Registry, we identified OS female twins ($n = 11,078$), SS female twins ($n = 19,186$), OS male twins ($n = 11,080$), and SS male twins ($n = 20,207$) born between 1977 and 2009. The SS twins include monozygotic twins, dizygotic twins, and twins with unknown zygosity. These children were followed up from day 29 after birth until diagnosis of epilepsy, death, emigration, or end of follow-up (31 December 2011) whichever came first. Information on diagnosis of epilepsy was obtained from the Danish National Patient Registry. We calculated hazard ratios (HRs) and 95% confidence intervals (CIs) for epilepsy in the OS twins using a Cox proportional hazards regression model compared with the SS twins. To account for the correlation of twins from the same mother when estimating standard errors, we used the cluster option in Stata.

Results: We identified 152 OS female twins, 282 SS female twins, 162 OS male twins, and 335 SS male twins diagnosed with epilepsy corresponding to an incidence rate of 9.9 and 9.7 per 10,000 person years for the OS and SS female twins, and 10.6 and 10.9 per 10,000 person years for the OS and SS male twins, respectively. We found a similar risk of epilepsy among the OS and SS female twins [HR = 1.01; 95% CI 0.83–1.24] as well as among the OS and SS male twins [HR = 0.94; 95% CI 0.78–1.14].

Conclusions: In this population-based study of Danish twins, we did not find difference in the risk of epilepsy between twins with an OS co-twin and twins with a SS co-twin. This applied to both female and male twins. The study therefore does not support the hypothesis that subtle hormone difference in fetal life due to co-twin may play a role in the development of epilepsy later in life.

Keywords: Twins, Opposite-sex, Same-sex, Sex difference, Testosterone, Epilepsy

Background

Epilepsy is the most frequent chronic neurologic condition in childhood [1–3]. The incidence rate is highest during infancy [3], and males and females have different susceptibility to epilepsy in different periods of life [4]. Females have a higher incidence rate of epilepsy than males in their teenage years, while the rate is higher in males from birth to the beginning of adolescence [4]. On

average, males have a marginally higher incidence of epilepsy than females while generalized epilepsies are more common among females and epilepsy with focal seizure are more common among males [5]. Epilepsy has a high degree of heritability indicating shared genetic components in epileptogenesis [6–8], but intrauterine factors like maternal preeclampsia [9], infections [10], and medication use in pregnancy [11] have also been associated with risk of epilepsy. Whether prenatal exposure to subtle differences in sex hormones plays a role in the development of epilepsy remains uncertain [12].

* Correspondence: ys@clin.au.dk

⁷Department of Clinical Epidemiology, Institute for Clinical Medicine, Aarhus University Hospital, Olof Palmes Allé 43-45, DK-8200 Aarhus N, Denmark
Full list of author information is available at the end of the article



The fetal testes start to produce testosterone in about gestational week 8 [13, 14], and testosterone is an important hormone in male fetal development. It can pass the placenta barrier and the blood-brain barrier [15, 16] and influence early human brain development [17]. The twin testosterone transfer (TTT) hypothesis [18, 19] states that testosterone from a male fetus can be transferred to an adjacent fetus via amniotic diffusion. The opposite-sex (OS) twins therefore have an intrauterine environment that differs from that of the same-sex (SS) twins concerning sex hormones. Thus, OS female twins may be exposed to higher levels of testosterone in utero than SS females [15, 20]. Likewise, SS male twins may have slightly higher prenatal exposure to testosterone compared with OS male twins [21]. Some studies have shown that OS female twins have masculinization of a variety of traits [18, 22], and OS male twins have de-masculinized features compared with SS male twins [23, 24]. A number of studies, however, did not find any notable difference among OS and SS twins regarding academic performance [25] and cancer risk [26]. No clear difference was found regarding early life mortality risks either [27].

Some studies indicate that testosterone exposure in pregnancy might influence the neuropsychiatric development in children including effects on language [28], emotion [29], and gender-related behavior [13] and may cause disruptive behavior disorders [30] and autistic disorders [31, 32]. For example, a study showed the SS male twins had a higher risk of autism compared with OS male twins [33]. Other studies, however, did not support the TTT hypothesis [34, 35]. Instead, the studies found that girls with a male co-twin had less ADHD and autistic traits than girls with a female co-twin [34, 35] indicating the complexity of the effect of fetal hormones on brain development. The interaction between sex hormones and epilepsy is complex [36]. Progesterone and its metabolites are anticonvulsant and estrogens are proconvulsant in general [36], while testosterone has biphasic effect on seizures according to the levels of its distinct metabolites [12]. A number of sex differences are seen in the brain development that are associated with seizure induction and neonatal males present a greater susceptibility to seizures than neonatal females [37], but it is unclear whether the subtle differences in sex hormone environment (especially testosterone) among twins play a role in the development of epilepsy later in life. The present study investigates the risk of epilepsy in OS and SS twins, assuming that the sex of the co-twin influences the level of prenatal exposure to sex hormones and thus the risk of epilepsy.

Methods

Study population and follow-up

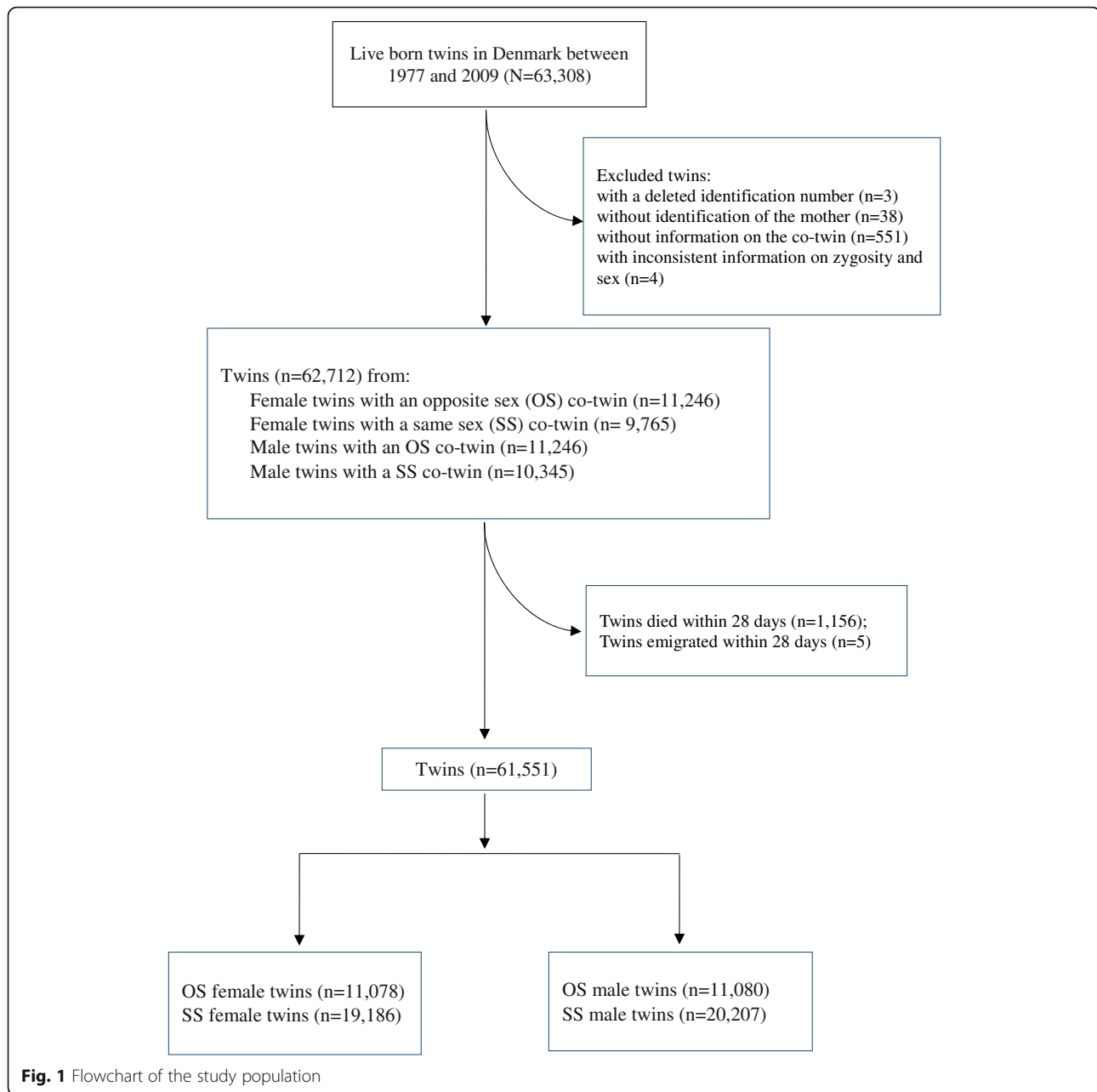
We identified 63,308 twins born alive in Denmark between 1977 and 2009 from the Danish Twin Registry [38], which has complete registration of all twin live births since 1973. We excluded twins whose identification number was deleted in the registry ($n = 3$), those who were registered without identification of the mother ($n = 38$), those who did not have a recorded twin brother or sister at time of birth ($n = 551$), and those who were registered as monozygotic SS twins but were of opposite sex ($n = 4$). This left us with a study population of 62,712 twins (Fig. 1). In this study population, 1156 (1.8%) children died (329 OS twins and 827 SS twins) and 5 children emigrated within the first 28 days of life, leaving 61,551 twins for the analyses (Fig. 1). These children were followed from day 29 after birth until diagnosis of epilepsy, death, emigration, or end of follow-up (31 December 2011), whichever came first.

The OS twins are dizygotic twins, and the information on the SS twins' zygosity in the Danish Twin Registry relies on the twins' answers to a short questionnaire on the degree of similarity between co-twins [39]. Zygosity is not known for all SS twins because of no responses or inconsistent answers to the questionnaire between twins, or death of one or both twins at an early age [39]. Zygosity of SS twins was classified into three groups (monozygotic twins, dizygotic twins, and twins with unknown zygosity) [38].

Information on epilepsy diagnoses was obtained from the Danish National Patient Registry, which contains discharge diagnoses for all inpatients admitted to Danish hospitals from 1977 onwards and for outpatients from 1995 onwards. Diagnoses in this registry were coded according to ICD-8 from 1977 to 1993 and ICD-10 from 1994 onwards. The twins were identified as having epilepsy if they had been hospitalized or been in outpatient care and registered with the ICD-10 code G40-41 or the ICD-8 code 345. Information on birth date and parental age at time of birth was obtained from the National Birth Registry [40], and information on parental education was obtained from the Danish Education Registers [41].

Statistical analyses

We used the Cox proportional hazards regression model to estimate hazard ratios (HRs) and 95% confidence intervals (CIs) of epilepsy for the OS male and female twins (vs the SS twins). We performed both crude and adjusted HRs of epilepsy. The adjusted analyses were controlled for maternal age at time of birth (< 25, 25–29, 30–34, 35–39, 40+ years), paternal age at birth (< 30, 30–39, 40+ years), the highest degree of education completed by the parents (primary and lower secondary, upper and post-secondary, and tertiary), and calendar years (1977–1984, 1985–1994, 1995–1999, 2000–2004, 2005–2009). We also estimated



the age-specific risk of epilepsy (< 1 year, 1–4 years, 5–18 years, and 19–36 years). In a sensitivity analysis, we estimated HRs of epilepsy for the OS twins compared with the dizygotic SS twins only.

Among 61,551 twins from 31,028 mothers, there were 30,605 (98.6%) mothers with one twin pregnancy, 420 (1.4%) mothers with two twin pregnancies, and 3 with three twin pregnancies. In the analyses, both twins from a SS twin pair were included as the reference. To account for the correlations of twins in a pair and siblings of the same mother, we used the cluster option in Stata, which takes correlation of twins from the same mother

into consideration for estimating standard error. We also randomly divided the SS twin pairs into two groups and used each of them as the reference in the sensitivity analyses to avoid dependence between the two SS twins from the same twin pair.

Results

In the study population of 61,551 twins, we identified 22,158 (36.0%) OS twins, including 11,078 OS female twins and 11,080 OS male twins, and 39,393 (64.0%) SS twins including 19,186 SS female twins and 20,207 SS male twins (Fig. 1). Among the SS twins, 6861

(17.4%) were monozygotic twins and 11,749 (29.8%) were dizygotic twins while 20,783 (52.8%) were of unknown zygosity and the distribution was same among the female and male twins (Table 1). In general, the OS female and male twins were more likely born to older parents and born in the later part of the study period (Table 1).

The twins were followed for up to 36 years with a median of 13.3 years. During this follow-up, we identified 152 OS female twins, 282 SS female twins, 162 OS male twins, and 335 SS male twins diagnosed with epilepsy

corresponding to an incidence rate of 9.9 and 9.7 per 10,000 person years for the OS and SS female twins, and 10.6 and 10.9 per 10,000 person years for the OS and SS male twins, respectively (Table 2).

Overall, there was no significant difference in the risk of epilepsy between OS and SS female twins or between OS and SS male twins. The adjusted HR of epilepsy was 1.01 [95% CI 0.83–1.24] for the OS compared with SS female twins and 0.94 [95% CI 0.78–1.14] for the OS compared with SS male twins (Table 2). The results remained unchanged when we

Table 1 Characteristics of the study population

Characteristics	Female twins		Male twins	
	OS ^a (n=11,078) N (%)	SS ^a (n=19,186) N (%)	OS ^a (n=11,080) N (%)	SS ^a (n=20,207) N (%)
Zygosity				
Monozygotic	.	3,425 (17.9)	.	3,436 (17.0)
Dizygotic	11,078 (100)	5,719 (29.8)	11,080 (100)	6,030 (29.8)
Unknown	.	10,042 (52.3)	.	10,741 (53.2)
Maternal age at birth (years)				
<25	976 (8.8)	2,662 (13.9)	985 (8.9)	2,727 (13.5)
25-29	3,364 (30.4)	6,514 (34.0)	3,353 (30.3)	6,745 (33.4)
30-35	4,421 (39.9)	6,828 (35.6)	4,421 (39.9)	7,357 (36.4)
35-39	2,029 (18.3)	2,796 (14.6)	2,033 (18.3)	3,021 (15.0)
40+	288 (2.6)	386 (2.0)	288 (2.6)	357 (1.8)
Paternal age at birth (years)				
<30	2,727 (24.6)	5,891 (30.7)	2,728 (24.6)	6,398 (31.7)
30-39	6,883 (62.1)	11,088 (57.8)	6,880 (62.1)	11,468 (56.8)
40+	1,374 (12.4)	2,032 (10.6)	1,375 (12.4)	2,091 (10.3)
Missing	94 (0.8)	175 (0.9)	97 (0.9)	250 (1.2)
Maternal completed highest education				
Primary and lower secondary	1,902 (17.2)	3,600 (18.8)	1,914 (17.3)	3,763 (18.6)
Upper and post-secondary	4,477 (40.4)	7,801 (40.7)	4,468 (40.3)	8,210 (40.6)
Tertiary	4,560 (41.2)	7,476 (39.0)	4,558 (41.1)	7,979 (39.5)
Missing	139 (1.3)	309 (1.6)	140 (1.3)	255 (1.3)
Paternal completed highest education				
Primary and lower secondary	2,038 (18.4)	3,612 (18.8)	2,029 (18.3)	3,909 (19.3)
Upper and post-secondary	5,218 (47.1)	9,140 (47.6)	5,231 (47.2)	9,485 (46.9)
Tertiary	3,561 (32.1)	5,867 (30.6)	3,557 (32.1)	6,190 (30.6)
Missing	261 (2.4)	567 (3.0)	263 (2.4)	623 (3.1)
Calendar year of birth				
1977-1984	1,234 (11.1)	2,806 (14.6)	1,231 (11.1)	3,249 (16.1)
1985-1994	2,451 (22.1)	4,994 (26.0)	2,463 (22.2)	4,953 (24.5)
1995-1999	2,212 (20.0)	3,414 (17.8)	2,213 (20.0)	3,768 (18.6)
2000-2004	2,553 (23.0)	3,913 (20.4)	2,550 (23.0)	4,114 (20.4)
2005-2009	2,628 (23.7)	4,059 (21.2)	2,623 (23.7)	4,123 (20.4)

^aOS opposite-sex twins, i.e., twins with an opposite sex co-twin, SS same-sex twins, i.e., twins with a same sex co-twin

Table 2 Hazard ratios (HR) for epilepsy in OS twins compared with SS twins in females and males

Exposure status	Both twins of the SS twin pair were included in the reference					One twin of the SS twin pair was randomly selected as the reference	
						Sample 1	Sample 2
	Population	Epilepsy cases	IR ^a	Crude HR	Adjusted HR [95% CI] ^b	Adjusted HR [95% CI] ^b	Adjusted HR [95% CI] ^b
The SS female twins	19,186	282	9.74	Ref	Ref	Ref	Ref
The OS female twins	11,078	152	9.91	1.00	1.01[0.83-1.24]	1.03[0.81-1.30]	1.00[0.79-1.25]
The SS male twins	20,207	335	10.9	Ref	Ref	Ref	Ref
The OS male twins	11,080	162	10.6	0.93	0.94[0.78-1.14]	1.00[0.80-1.24]	0.89[0.72-1.11]

^aIncidence rate (/10,000 person-years)

^bHazard ratios are adjusted for maternal age at time of birth (<25, 25-29, 30-34, 35-39, 40+ years), paternal age at time of birth (<30, 30-39, 40+ years, missing), maternal and paternal highest completed education (primary and lower secondary, upper and post-secondary, tertiary, and missing), and calendar year (1977-1984, 1985-1994, 1995-1999, 2000-2004, 2005-2009)

repeated the analyses using the random samples of SS twins as the reference group (Table 2). The adjusted HR of epilepsy was 1.02 [95% CI 0.79–1.32] for OS vs SS females twins and 0.94 [95% CI 0.73–1.22] for OS vs SS males twins when we did the analyses among the dizygotic twins only (data not shown in the tables). When we estimated the age-specific risk of epilepsy, the results suggested that OS female twins had a decreased risk of epilepsy in the first year of life [HR 0.74; 95% CI 0.42–1.30] compared with SS female twins, but the 95% CI was wide and covered one (Table 3). The OS male twins had a similar risk of epilepsy in the first year of life as the SS male twins [HR 0.98; 95% CI 0.63–1.51] while they had a lower risk of epilepsy in early adulthood although the result was non-significant (Table 3).

Discussion

In this population-based study of Danish twins, we found that twins who shared the uterus with an OS co-twin had a similar risk of epilepsy as twins with a SS co-twin. The results indicated that the OS female twins had a lower risk of epilepsy in the first year of life compared with the SS female twins but the confidence intervals were wide and inconclusive.

Sex hormones are important for the sexual differentiation of the brain during early development, and testosterone is considered the main hormone responsible for this development. Male fetal testosterone production begins in the first trimester and peaks around gestational week 16 followed by another surge in the perinatal period [37]. Animal studies have shown that testosterone affects sex-specific volumes of brain nuclei [37] and neuronal structure and function [36]. Testosterone may be associated with

Table 3 Age specific hazard ratios (HR) for epilepsy in OS twins compared with SS twins

Age group and exposure status	Female					Males				
	Population	Epilepsy cases	IR ^a	Crude HR	Adjusted HR [95% CI] ^b	Population	Epilepsy cases	IR ^a	Crude HR	Adjusted HR [95% CI] ^b
<1 year										
SS	19,186	47	26.66	Ref	Ref	20,207	63	33.99	Ref	Ref
OS	11,078	19	18.65	0.70	0.74[0.42-1.30]	11,080	34	33.40	0.98	0.98[0.63-1.51]
1-9 years										
SS	19,039	130	9.04	Ref	Ref	19,990	176	11.60	Ref	Ref
OS	11,004	86	10.55	1.16	1.17[0.89-1.55]	10,992	87	10.69	0.92	0.95[0.73-1.23]
10-18 years										
SS	12,379	73	8.81	Ref	Ref	13,150	70	8.01	Ref	Ref
OS	6,722	35	8.38	0.95	0.95[0.63-1.44]	6,713	34	8.16	1.01	0.98[0.65-1.48]
19-35 years										
SS	6,282	32	7.06	Ref	Ref	6,533	26	5.19	Ref	Ref
OS	2,805	12	6.05	0.86	0.87[0.45-1.69]	2,789	7	3.58	0.69	0.72[0.31-1.66]

^aIncidence rate (/10,000 person-years)

^bHazard ratios, adjusted for maternal age at time of birth (<25, 25-29, 30-34, 35-39, 40+ years), paternal age at time of birth (<30, 30-39, 40+ years, missing), maternal and paternal highest completed education (primary and lower secondary, upper and post-secondary, tertiary, and missing), and calendar year (1977-1984, 1985-1994, 1995-1999, 2000-2004, 2005-2009)

increased excitatory tone in specific brain areas of neonatal males [37]. When compared to neonatal females, neonatal male rats have an increased baseline neuronal excitability and a more reactive neuroimmune response in brain areas associated with seizure induction [37]. Based on the TTT hypothesis, OS female twins would therefore be expected to have higher risk of epilepsy or seizure early in life, but we did not find evidence to support this hypothesis. On the contrary, our findings showed that the female twins with an OS male twin had a lower risk of epilepsy in the first year of life compared with the SS female twins although the findings were not statistically significant. We also found the OS and SS male twins had a similar risk of epilepsy.

As far as we know, no previous studies have compared the risk of epilepsy in OS and SS twins. Findings for attention deficit hyperactivity disorder (ADHD) and autism are conflicting [33–35]. Higher levels of testosterone in amniotic fluid have been associated with autism in some [32], but not all studies [42, 43]. Similar to our findings on risk of epilepsy in the first year of life among the OS female twins, recent studies on the risk of ADHD and autistic traits in the OS twins reported opposite findings [34, 35] according to the TTT hypothesis, which is interesting, and more studies are needed to explore the influence of fetal hormone on brain development and neuropsychiatric disorders.

The major strength of this study is the availability of reliable data on epilepsy from a large population-based register for all Danish twins born in 1977–2009 with almost complete follow-up. However, there are also limitations. To estimate the risk of epilepsy among the OS twins, which are dizygotic twins, the ideal reference group is the SS dizygotic twins [21]. The large group of twins with unknown zygosity among the SS twins in our study made it impossible to make the most valid comparison by identifying all the dizygotic SS twins. Moreover, we were not able to control for the use of assisted reproductive technology (ART) or other sources of sex hormone in fetal life. A higher proportion of children born after ART would be expected in the OS than in the SS twin group [44]. Persons who undergo fertility treatments may have conditions [45] that would be associated with the risk of epilepsy in offspring later in life and could potentially bias our findings [46]. In addition, the difference in hormone levels between OS and SS twins might not be large enough to have impact on the development of epilepsy and results from animal studies need not to apply to human. Likewise, testosterone affecting the fetus' epileptogenesis during pregnancy might be more complex, which cannot be demonstrated in the current study. Animal models have shown that testosterone can be metabolized into estradiol, which is generally excitatory, or it can be metabolized into androstenediol and dihydrotestosterone, which exert potent antiepileptic effect [12]. Due to sex difference in the prevalence of subtypes of

epilepsy [5, 47], it is important to explore effects of sex hormones in prenatal life on the development of the subtypes of epilepsy. Unfortunately, we did not have sufficient power to estimate the risk of the subtypes of epilepsy and the validity of the epilepsy subtype diagnosis is low in the Danish National Patient Registry [48].

Conclusions

In this population-based study of Danish twins, we did not find difference in the risk of epilepsy between twins with an OS co-twin and SS co-twin. This applied to both female and male twins. The study therefore does not support the hypothesis that subtle hormone difference in fetal life due to co-twin may play a role in the development of epilepsy later in life.

Abbreviations

ADHD: Attention deficit hyperactivity disorder; ART: Assisted reproductive technology; CI: Confidence interval; HR: Hazard ratio; ICD: International Classification of Diseases; OS: Opposite sex; SS: Same sex; TTT: Twin testosterone transfer

Acknowledgements

We would like to thank Anders Hammerich Riis for his suggestion of applying the cluster method in the analysis, and we are grateful to Tina Christensen for her help in the language revision.

Funding

This study was supported by the Lundbeck Foundation for the project "Discordant sex twins and long term health" (project no. 905073), which is an extension of the project "Possible infectious etiology of cerebral autism and ADHD like behavior (project no. 95093245)," Augustinus Fond for the project "Preventable risk factors for fetal death in Danish women" (project no. 26441) and the project "Prenatal folic acid supplementation and autism in childhood" funded by Shanghai Municipal Commission of Health and Family Planning (project no. 201440636). Jakob Christensen received research support from the Danish Epilepsy Association and the Novo Nordisk Foundation (NNF16OC0019126).

Availability of data and materials

Statistics Denmark (Sejroegade 11, DK-2100 Copenhagen, Denmark) administers the registry data. Due to legal restrictions, data is only available upon application and payment of an administration fee. Also, due to legal restrictions, permission to combine several datasets must be obtained from the Danish Data Protection Agency (Borgergade 28, 5, 1300 Copenhagen, Denmark).

Authors' contributions

YM drafted the first version of the manuscript and critically revised the manuscript. LA, KC, and JO conceptualized and designed the study and critically reviewed and revised the manuscript. CW and JC critically reviewed and revised the manuscript. YS supervised, conceptualized, and designed the study; analyzed the data; and critically reviewed and revised the manuscript. LA and CW also contributed to the data analyses. All authors approved the final manuscript as submitted and agreed to be accountable for the work.

Ethics approval and consent to participate

This study was approved by the Danish Data Protection Agency and the Danish Health and Medicines Authority.

Competing interests

Jakob Christensen received honoraria from serving on the scientific advisory board of UCB Nordic and Eisai AB, received honoraria from giving lectures from UCB Nordic and Eisai AB, and received funding for a trip from UCB Nordic. The other authors declare that they have no competing interests.

Publisher's Note

Springer Nature remains neutral with regard to jurisdictional claims in published maps and institutional affiliations.

Author details

¹School of Public Health, Fudan University, Shanghai, China. ²Key Lab. of Reproduction Regulation of NPPFC, SIPPR, IRD, Fudan University, Shanghai, China. ³Unit of Epidemiology, Biostatistics and Biodemography, Department of Public Health, University of Southern Denmark, Odense, Denmark. ⁴Research Unit of Gynecology and Obstetrics, Institute of Clinical Research, University of Southern Denmark, Odense, Denmark. ⁵Department of Obstetrics and Gynecology, Odense University Hospital, Odense, Denmark. ⁶Department of Neurology, Institute for Clinical Medicine, Aarhus University Hospital, Aarhus, Denmark. ⁷Department of Clinical Epidemiology, Institute for Clinical Medicine, Aarhus University Hospital, Olof Palmes Allé 43-45, DK-8200 Aarhus N, Denmark. ⁸Department of Epidemiology, Fielding School of Public Health, University of California, Los Angeles (UCLA), California, LA, USA.

Received: 29 November 2017 Accepted: 14 May 2018

Published online: 04 June 2018

References

- Aaberg KM, Bakken IJ, Lossius MI, Lund Soraas C, Haberg SE, Stoltenberg C, Suren P, Chin R. Comorbidity and childhood epilepsy: a nationwide registry study. *Pediatrics*. 2016;138:e20160921.
- Wei SH, Lee WT. Comorbidity of childhood epilepsy. *J Formos Med Assoc*. 2015;114:1031–8.
- Aaberg KM, Gunnes N, Bakken IJ, Lund Soraas C, Berntsen A, Magnus P, Lossius MI, Stoltenberg C, Chin R, Suren P. Incidence and prevalence of childhood epilepsy: a nationwide cohort study. *Pediatrics*. 2017;139:e20163908.
- Christensen J, Vestergaard M, Pedersen MG, Pedersen CB, Olsen J, Sidenius P. Incidence and prevalence of epilepsy in Denmark. *Epilepsy Res*. 2007;76:60–5.
- McHugh JC, Delanty N. Epidemiology and classification of epilepsy: gender comparisons. *Int Rev Neurobiol*. 2008;83:11–26.
- Kjeldsen MJ, Kyvik KO, Christensen K, Friis ML. Genetic and environmental factors in epilepsy: a population-based study of 11900 Danish twin pairs. *Epilepsy Res*. 2001;44:167–78.
- Kjeldsen MJ, Corey LA, Christensen K, Friis ML. Epileptic seizures and syndromes in twins: the importance of genetic factors. *Epilepsy Res*. 2003;55:137–46.
- Peljto AL, Barker-Cummings C, Vasoli VM, Leibson CL, Hauser WA, Buchhalter JR, Ottman R. Familial risk of epilepsy: a population-based study. *Brain*. 2014;137:795–805.
- Whitehead E, Dodds L, Joseph KS, Gordon KE, Wood E, Allen AC, Camfield P, Dooley JM. Relation of pregnancy and neonatal factors to subsequent development of childhood epilepsy: a population-based cohort study. *Pediatrics*. 2006;117:1298–306.
- Sun Y, Vestergaard M, Christensen J, Nahmias AJ, Olsen J. Prenatal exposure to maternal infections and epilepsy in childhood: a population-based cohort study. *Pediatrics*. 2008;121:e1100–7.
- Mao Y, Pedersen LH, Christensen J, Vestergaard M, Zhou W, Olsen J, Sun Y. Prenatal exposure to antidepressants and risk of epilepsy in childhood. *Pharmacoevidenciol Drug Saf*. 2016;25:1320–30.
- Reddy DS. Role of hormones and neurosteroids in epileptogenesis. *Front Cell Neurosci*. 2013;7:115.
- Hines M. Sex-related variation in human behavior and the brain. *Trends Cogn Sci*. 2010;14:448–56.
- Wilson JD, George FW, Griffin JE. The hormonal control of sexual development. *Science*. 1981;211:1278–84.
- Even MD, vom Saal FS. Seminal vesicle and preputial gland response to steroids in adult male mice is influenced by prior intrauterine position. *Physiol Behav*. 1992;51:11–6.
- Arnold AP. The organizational-activational hypothesis as the foundation for a unified theory of sexual differentiation of all mammalian tissues. *Horm Behav*. 2009;55:570–8.
- Hines M. Gender development and the human brain. *Annu Rev Neurosci*. 2011;34:69–88.
- Slutske WS, Bascom EN, Meier MH, Medland SE, Martin NG. Sensation seeking in females from opposite- versus same-sex twin pairs: hormone transfer or sibling imitation? *Behav Genet*. 2011;41:533–42.
- Ryan BC, Vandenberg JG. Intrauterine position effects. *Neurosci Biobehav Rev*. 2002;26:665–78.
- Tapp AL, Maybery MT, Whitehouse AJ. Evaluating the twin testosterone transfer hypothesis: a review of the empirical evidence. *Horm Behav*. 2011;60:713–22.
- Cohen-Bendahan CC, van de Beek C, Berenbaum SA. Prenatal sex hormone effects on child and adult sex-typed behavior: methods and findings. *Neurosci Biobehav Rev*. 2005;29:353–84.
- Cohen-Bendahan CC, Buitelaar JK, van Goozen SH, Orlebeke JF, Cohen-Kettenis PT. Is there an effect of prenatal testosterone on aggression and other behavioral traits? A study comparing same-sex and opposite-sex twin girls. *Horm Behav*. 2005;47:230–7.
- Galsworthy MJ, Dionne G, Dale PS, Plomin R. Sex differences in early verbal and non-verbal cognitive development. *Dev Sci*. 2000;3:206–15.
- Lenz B, Muller CP, Kornhuber J. Alcohol dependence in same-sex and opposite-sex twins. *J Neural Transm*. 2012;119:1561–4.
- Ahrenfeldt L, Petersen I, Johnson W, Christensen K. Academic performance of opposite-sex and same-sex twins in adolescence: a Danish national cohort study. *Horm Behav*. 2015;69:123–31.
- Ahrenfeldt LJ, Skytthe A, Moller S, Czene K, Adami HO, Mucci LA, Kaprio J, Petersen I, Christensen K, Lindahl-Jacobsen R. Risk of sex-specific cancers in opposite-sex and same-sex twins in Denmark and Sweden. *Cancer Epidemiol Biomark Prev*. 2015;24:1622–8.
- Ahrenfeldt LJ, Larsen LA, Lindahl-Jacobsen R, Skytthe A, Hjelmborg JV, Moller S, Christensen K. Early-life mortality risks in opposite-sex and same-sex twins: a Danish cohort study of the twin testosterone transfer hypothesis. *Ann Epidemiol*. 2017;27:115–20. e2.
- Lust JM, Geuze RH, Van de Beek C, Cohen-Kettenis PT, Groothuis AG, Bouma A. Sex specific effect of prenatal testosterone on language lateralization in children. *Neuropsychologia*. 2010;48:536–40.
- Lombardo MV, Ashwin E, Auyeung B, Chakrabarti B, Lai MC, Taylor K, Hackett G, Bullmore ET, Baron-Cohen S. Fetal programming effects of testosterone on the reward system and behavioral approach tendencies in humans. *Biol Psychiatry*. 2012;72:839–47.
- Roberts BA, Martel MM. Prenatal testosterone and preschool disruptive behavior disorders. *Pers Individ Dif*. 2013;55:962–6.
- Auyeung B, Ahluwalia J, Thomson L, Taylor K, Hackett G, O'Donnell KJ, Baron-Cohen S. Prenatal versus postnatal sex steroid hormone effects on autistic traits in children at 18 to 24 months of age. *Mol Autism*. 2012;3:17.
- Auyeung B, Baron-Cohen S, Ashwin E, Knickmeyer R, Taylor K, Hackett G. Fetal testosterone and autistic traits. *Br J Psychol*. 2009;100:1–22.
- Ho A, Todd RD, Constantino JN. Brief report: autistic traits in twins vs. non-twins—a preliminary study. *J Autism Dev Disord*. 2005;35:129–33.
- Attermann J, Obel C, Bilenberg N, Nordenbaek CM, Skytthe A, Olsen J. Traits of ADHD and autism in girls with a twin brother: a Mendelian randomization study. *Eur Child Adolesc Psychiatry*. 2012;21:503–9.
- Eriksson JM, Lundstrom S, Lichtenstein P, Bejerot S, Eriksson E. Effect of co-twin gender on neurodevelopmental symptoms: a twin register study. *Mol Autism*. 2016;7:8.
- Tauboll E, Sveberg L, Svalheim S. Interactions between hormones and epilepsy. *Seizure*. 2015;28:3–11.
- Kight KE, McCarthy MM. Using sex differences in the developing brain to identify nodes of influence for seizure susceptibility and epileptogenesis. *Neurobiol Dis*. 2014;72:136–43.
- Skytthe A, Kyvik KO, Holm NV, Christensen K. The Danish Twin Registry. *Scand J Public Health*. 2011;39(Suppl 7):75–8.
- Christiansen L, Frederiksen H, Schousboe K, Skytthe A, von Wurmb-Schwark N, Christensen K, Kyvik K. Age- and sex-differences in the validity of questionnaire-based zygosity in twins. *Twin Res*. 2003;6:275–8.
- Knudsen LB, Olsen J. The Danish Medical Birth Registry. *Dan Med Bull*. 1998;45:320–3.
- Jensen VM, Rasmussen AW. Danish education registers. *Scand J Public Health*. 2011;39(Suppl 7):91–4.
- Kung KT, Spencer D, Pasterski V, Neufeld S, Glover V, O'Connor TG, Hindmarsh PC, Hughes IA, Acerini CL, Hines M. No relationship between prenatal androgen exposure and autistic traits: convergent evidence from studies of children with congenital adrenal hyperplasia and of amniotic

testosterone concentrations in typically developing children. *J Child Psychol Psychiatry*. 2016;57:1455–62.

43. Park BY, Lee BK, Burstyn I, Tabb LP, Keelan JA, Whitehouse AJO, Croen LA, Fallin MD, Hertz-Picciotto I, Montgomery O, et al. Umbilical cord blood androgen levels and ASD-related phenotypes at 12 and 36 months in an enriched risk cohort study. *Mol Autism*. 2017;8:3.
44. Kato N. Recent decelerated decline in perinatal mortality rate of unlike-sexed twins in Japan. *Paediatr Perinat Epidemiol*. 2004;18:192–5.
45. Schmidt L. Infertility and assisted reproduction in Denmark. Epidemiology and psychosocial consequences. *Dan Med Bull*. 2006; 53:390–417.
46. Sun Y, Vestergaard M, Christensen J, Zhu JL, Bech BH, Olsen J. Epilepsy and febrile seizures in children of treated and untreated subfertile couples. *Hum Reprod*. 2007;22:215–20.
47. Christensen J, Kjeldsen MJ, Andersen H, Friis ML, Sidenius P. Gender differences in epilepsy. *Epilepsia*. 2005;46:956–60.
48. Christensen J, Vestergaard M, Olsen J, Sidenius P. Validation of epilepsy diagnoses in the Danish National Hospital Register. *Epilepsy Res*. 2007; 75:162–70.

Ready to submit your research? Choose BMC and benefit from:

- fast, convenient online submission
- thorough peer review by experienced researchers in your field
- rapid publication on acceptance
- support for research data, including large and complex data types
- gold Open Access which fosters wider collaboration and increased citations
- maximum visibility for your research: over 100M website views per year

At BMC, research is always in progress.

Learn more biomedcentral.com/submissions

