

Available online at www.sciencedirect.com

Procedia Engineering 00 (2011) 1–8

**Procedia
Engineering**

www.elsevier.com/locate/procedia

GCSE 2011: 28-30 December 2011, Dubai, UAE

Designing of Flexible Multi-Microcontroller Based Training System

R.S.K. Selvakumar*, K.H.Ghazali, N.M.K. Nik Yusoff

*Faculty of Electrical & Electronics Engineering, Universiti Malaysia Pahang,**26600 Pekan, Pahang Darul Makmur, Malaysia*

Abstract

In traditional Embedded Control Technology courses, students learn to develop assembly language programs to control peripherals, handle interrupts, and perform I/O operations. However, students find the subject is difficult as the subject is presented in a lecture format. Unfortunately, this Embedded Controller Technology (ECT) course is a compulsory course in any electrical or electronic field of engineering. This paper aims to describe development of a flexible multi-microcontroller training system based on 8-bit microcontroller in Microchip, Freescale (formerly Motorola) and Intel family. For this reason, a new laboratory evaluation tool (UMP-EVT) specifically will be designed to be as a learning tool for those who intend to learn microcontroller and for use in the academic environment. With an extensive of this training system, it could let the user to get start with their microcontroller application efficiently. In addition, it is further boosted by the introduction of Integrated Development Environment (IDE) features in order to create user-friendly environment. By using this UMP-EVT, users are exposed to practical experience of the microcontroller and provide an easy path to learn this intelligent electronic device in short time. In this respect, this UMP-EVT would be applicable for education and expose the electrical engineering students to the understanding fundamental of microcontroller in electronic design field.

© 2011 Published by Elsevier Ltd. Selection and/or peer-review under responsibility of GCSE 2011

Keywords: Educational, MCS51 microcontroller, HC11 microcontroller, PIC microcontroller

1. Introduction

Embedded systems are designed for dedicated applications running in control systems. The unique feature of such systems is the capability to perform timely and predictable operations in response to concurrent requests arriving from the external environment ^[1]. To create an effective embedded system, one must properly employ the appropriate system architecture, hardware/software interfaces, peripheral devices, and software components ^[9]. Currently, embedded systems companies are facing with a shortage of engineers having the appropriate skills to respond to market opportunities ^[8]. However, most electrical

Email address: inderjit_1791@yahoo.com|kamarul@ump.edu.my|nik@ump.edu.my(R.S.K. Selvakumar, K.H.Ghazali, N.M.K. Nik Yusoff)

and electronics engineering programs teach programming and design skills that are appropriate for a general-purpose computer operating under control of a commercial operating system rather than for the more specialized embedded systems ^[5].

Embedded systems integrate hardware and software components and require developers with skills in both subjects. Hardware skills should include the capability of adopting a systematic approach to making design decisions in choosing between various hardware platforms for a given embedded systems application ^[22]. These decisions are nontrivial because there are a large number of quite different hardware platforms available. Moreover, the available hardware devices are constantly changing over time. Thus, embedded systems education needs to include, in addition to knowledge of basic functional properties of current hardware platforms, the capability to systematically analyse both functional and non-functional features of hardware devices and the skills to map these to the requirements of a given specified application to be designed ^[26].

Therefore, a flexible and versatile prototype system will be developed. The system can be used extensively in experiment or project for diploma, undergraduate and short courses. This UMP-EVT will also be boosted with a simple application board that is suitable for the students to test their capabilities and to improve their knowledge in this course. In addition, a monitor program will be developed to integrate the basic software such as communication software, text editor, cross assembler, compiler, simulator and emulator. Needless to say, it will tremendously create user friendly environment ^[21].

In this paper, we are going to propose such a systematic approach for hardware implementation and discuss how it could be used successfully in embedded system education of this UMP-EVT in ECT class. This paper presents the importance of microcontrollers course in education syllabus and the design of UMP-EVT that is based on 8-bit microcontroller Atmel® AT89C51, Microchip® PIC 16F877 and Freescale® MC68HC11. It begins with the discussion of the hardware implementation of the system. It proceeds then with software implementation of the system to be interfaced with the PC creating a user-friendly environment, followed by a discussion. Finally, a conclusion is given in section 6.

2. Microcontrollers in Education

Microcontroller courses are frequently taught in Electrical and Electronics Engineering curriculum. 8 bit microcontrollers are very appropriate for educational purposes, because they include a processor core similar to those of classical general purpose microprocessors, as the Microchip PIC 16 Series, Freescale MC6800 or Intel MCS51, very suitable for studying microprocessor fundamentals and assembly programming ^[2]. On the other hand, the several peripherals integrated around the processor core in a same silicon chip allow studying and practicing interfacing fundamentals in the laboratory with low cost hardware tools (evaluation boards, modules, software and etc.).

This ECT course introduces the student to microprocessor and microcontroller system design, and their application to data acquisition and control. Students are assumed to have prior knowledge of number systems, digital logic and basic electronics; some of them have programming background, but others not.

Educational theorists provide a learning taxonomy that categorizes learning on a scale from lowest to highest levels ^[1]. Memorizing facts occupies the lowest; applying learned facts to practical situations occupies the middle ones, and analysis, design and evaluation the highest ones. Although memorizing facts and concept comprehension are unavoidable, in technological education emphasis on applications, analysis, and design is required ^[18]. In addition, application, analysis and evaluation provide the real joy and excitement in learning ^[12]. Thus, a course on microcontrollers must pay attention from the lowest learning levels to the highest ones.

For this reason, the student not only should study microcontroller theoretical concepts, but must practice for himself with suitable educational tools supplied by the ECT teacher ^[20]. We will implement this flexible and versatile UMP-EVT in ECT class. This UMP-EVT is relatively easily to work with and yet it has almost the features essential for a complete control system (memory, ports, analog/digital IO, AD converter and timer). The UMP-EVT includes more than 50 devices, with several amounts of memory and different peripherals. Many microcontroller text books are based on these three microcontrollers, and there are inexpensive and widely available tools for it. Moreover, by working with these microcontrollers, students learn that all of these microcontrollers are most widespread use and most commonly used in education ^[22].

3. Implementation of Hardware Section

3.1. Design Consideration for Student Usage

Development tool reliability tends to be a problematic issue with microcontroller evaluation boards, especially in the hands of inexperienced students ^[20]. Dysfunctional hardware complicates laboratory activities and detracts from educational opportunities. Keeping microcontroller evaluation boards (EVB) functional often becomes a significant task for the lab faculty. One key design consideration for this educational training system was to evaluate past hardware issues, identify the student usage profile, and incorporate a reasonable degree of protection. Electrical failure is the most common fault mode in a lab environment. Three major sources of electrical failure were identified:

- Providing incorrect power supply to the processor including reverse polarity or the wrong voltage. Many EVBs don't contain an on-board power supply, so reverse polarity or excessive supply voltage will destroy the processor very quickly.
- Shorting output lines to power or ground resulting in excessive current. Most consumer products are designed such that no sequence of commands will result in hardware damage. EVBs are typically not so forgiving. Students may intend to provide a grounded input, for example, but inadvertently configure the port data control register as an output with logic high. The resultant condition will damage the output or the entire processor.
- Electrostatic discharge is the silent killer of CMOS devices. Students routinely connect wires to microcontroller pins, without properly grounding themselves.

Mechanical and electro-mechanical failure modes are less prevalent, but do occur. For example, damage may occur due to excessive board flex while mating wide ribbon cable connectors, or due to objects dropped on the circuit board (including conductive objects) while the board is operating.

The UMP-EVT key constraints are to design a board that didn't excessively limit external device interfacing, is cost effective, and robust relative to the student usage profile. Several compromises are necessary. The goal was never a "Student-proof" board, but rather a board that would handle the majority of expected student usage profiles. A failure-mode effects analysis (FMEA) approach will be utilized where severity and probability of occurrence will be ranked against cost of mitigation.

A major distinction between the UMP-EVT and most other EVBs is circuit protection. All user I/O will be interfaced through carefully segmented and marked I/O pins. Each I/O pin will be contained over-current and ESD protection, as well as an LED state indicator to eliminate the need for logic probes. The UMP-EVT I/O circuitry will be designed such that a short circuit between any user pin and any power-source from -15V to $+15\text{V}$ will not result in damage to the EVT, even if the pin is configured as an output. Theoretically, the protection circuitry limits the drive strength and bandwidth of the peripheral interface, but the board is capable of maintaining CMOS logic levels at about 1mA , and with a 5 kHz bandwidth. The circuit protection will preclude the use of bus-based interface experiments, but permits most sensor and actuator experiments with little risk to the hardware.

The UMP-EVT also will incorporate with 5-volt power supplies. The supply will be thermally protected, and the on-board Fan, will be used as an I/O experiment for PWM speed control defaults to the on state and is strategically located to provide power supply cooling for additional design margin. Power for user experiments will be provided via a separate tracking regulator. The regulator is capable of supplying 1.5 A with less than 10mV of error with respect to 5.000V ^[21], but is isolated such that excessive voltage inadvertently applied to the user circuitry does not back-feed the processor and cause damage. The design will be included provisions for a clear plastic cover to provide mechanical protection, and the circuit board will be fastened to a rigid $1/8''$ thick fibreglass panel to prevent flexing. The boards may be stacked without mechanical damage.

3.2. The UMP-EVT Hardware

This UMP-EVT hardware component will consists of a system board and an application board. System board includes with these three microcontrollers, external RAM and ROM for expandability, and three RS232 interfacing circuit, power module, oscillators circuit, Reset- ON module and interrupt module. The application board, on the other hand, will consists of LEDs, Bar Graph, 7-Segment Displays, 8×8 Tri-Colour Dot Matrix, Liquid Crystal Display (LCD), Stepper Motor, Direct Current (DC) Motor, Wireless Devices and Traffic Light system, while the input devices are an 8-ways Dual-In-Line Package (DIP) switches, and a 4×4 Keypad.

3.3. System Board

The system board uses the generic three typical microcontrollers, MCS51, HC11, and PIC 16 Series as the heart of the system. Additional 64k each of code and data memory space is made available via external ROM and RAM devices connected to data bus of the microcontroller using de-multiplexing latches. Availability of de-multiplexing latches also allow for further I/O ports expansion. In addition to ports expandability, the system board also include a serial communication interface (SCI) that allows the microcontroller to communicate with the PC in order to allow the user to issue commands to the training system. DS275 from Dallas Semiconductor provides the necessary drive for serial RS232 transmission, which will be used with ZigBee devices. Simplified block diagram of UMP-EVT in shown in Figure 1.

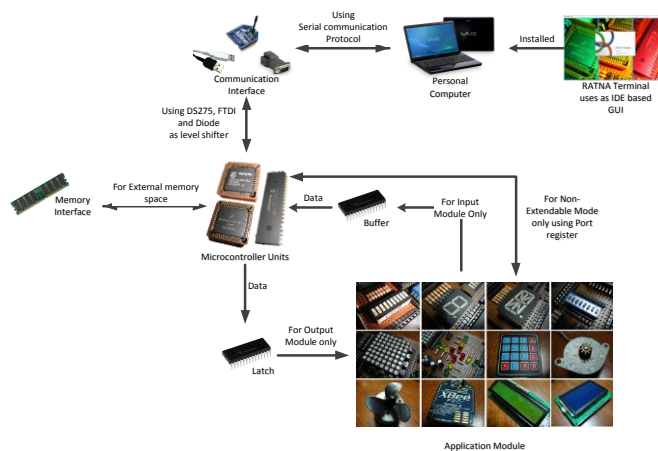


Fig. 1. Block diagram of UMP-EVT

3.4. Application Board

The application board is one of the key features of the UMP-EVT system. There are ten suggested application modules incorporated on to the application board. The modular approach used in developing the application modules provides flexibility for instructor to use the UMP-EVT system either as laboratory training tool or as platform for students' design project ^[21]. Due to the limited number of I/O ports, address decoder is used with latches and buffers to select some of the application devices.

3.5. Expandability option

The other key feature of the MCS51 UMP-EVT system is the expansion port. The expansion port in form of 40-pin bus connector will be provided to allow for students to develop their own application system board. Furthermore, ZIF socket will be used to mount the external code memory (ROM) chip on the system board. This allow for easy placement (replacement) of the memory chip as such students can use the system board as a standalone system for the application modules they'll developing.

4. Implementation of Software Section

4.1. Assembly Language Programming

Our department has so far retained our assembly language programming requirement. However, it was recently revamped for two fundamental reasons. The first reason is hardware suitability and availability. One of the most common computing platforms used at many universities is a basic PC running a recent Windows operating system^[20]. At the heart of this system (Intel, Motorola, and Microchip) that traces its roots back to the early 1980's and 1990's, but has experienced radical transformations in internal organization and capability. The complexity of these processors makes it an ideal target of study for a computer architecture class. However, this same complexity makes it unsuitable for a beginning course in assembly language programming. Commitment to backward compatibility while introducing new features to meet modern computing needs has spawned a processor with extremely complicated addressing modes, a variety of register sizes, and obscure instructions that make this a poor choice for an introductory course in assembly language programming^[22]. In a 32 or 64-bit world, talking about extended precision integer arithmetic seems quite artificial, whereas it was a necessity when 8-bit processors were the norm. To complicate matters, modern operating systems work against the student who needs to see the direct relationship between assembly language commands and hardware response. Operating systems present a highly sophisticated interface to the hardware that is only with difficulty breached by assembly language practitioners^[20]. Interrupt processing, once a major topic in assembly language classes, is not as easy to implement under the watchful and restrictive operating systems of today. To address these concerns, we felt we should explore the suitability of other computing platforms.

A perceived lack of relevance of assembly language skills was the second reason for the changes to our educational training systems. Although a very visible part of the computer science world is engaged in advancing the state of the art in high-level software design and user-friendly interfaces, another, less-visible part of the industry, is busy developing software for a subset of microprocessors targeting embedded applications^[26]. Although C is a popular language for development in many of these microcontrollers, assembly language is still an important tool. Because a typical embedded processor runs without an operating system, programmers are free to use the raw capabilities in any way they choose^[16]. Assembly language provides the most natural and direct access to the processor's capabilities. By introducing assembly language programming in such an environment, students can see the relevance of this language while gaining an appreciation for the details of program execution at the instruction set architecture level.

The third reason for the change is related to another curricular decision in our department, the replacement of assembly language programming by C programming in our introductory courses. Although assembly language programming was used as a medium to teach fundamental programming concepts, it also offered the opportunity (and need) to discuss low-level details such as number representation (which in assembly is hardware dependent) and storage allocation (pointers and pointer arithmetic, static, dynamic and automatic allocation, and details of array storage). C programming hides many of these details from the programmer so there is less motivation to discuss what is happening at the processor level when using this language^[13]. In our curriculum revision, the assembly language

programming, which is usually taken after our students have experienced the basic fundamental data structures (arrays, stacks, queues, and linked structures), was a natural place to introduce the instruction set architecture of a real processor and demonstrate how it could be programmed using assembly language [4].

4.2. Hardware-Software Graphical User Interface (GUI)

The software development of the system will be divided into two categories; the monitor program and the Integrated Development Environment (IDE) parts. The monitor program will be developed by using the assembly language to allow communication between the PC and the system module. From the PC, the user can communicate with the system board to issue commands to upload or download, execute and read or write to memory location.

The concept diagram for the monitor program is shown in the Figure 2. This concept diagram is the main structure of the monitor program. It consists of several subroutines which each performs different tasks. The basic function of the monitor software is to read the input based on user's selection. Based on the selection, it will determine which procedure will be executed. In this section, several subroutines are developed, such as read keyboard, read string, display character, display string and many more ^[21].

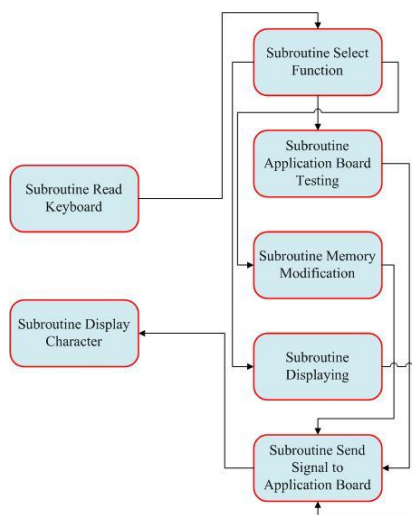


Fig. 2. Concept Diagram of Monitor Software

The IDE, on the other hand, integrates various basic software such as cross assembler, communication software and text editor to create user-friendly environment. This new software tool will be developed to allow the user to perform all development activities without needing to exit any programs. This environment tool is developed by using an object-oriented programming Microsoft Visual Studio. The software will offers standard windows button such as command buttons, check boxes, option buttons, text boxes, and etc and produces a user friendly environment system.

4.3. Monitor Program Testing

Suggested Monitor program module for UMP-EVT system is to test the load and execute user's application program. These two menus provide the core function of the monitor program. Figure 3 shows the testing flowchart for load and execute user's application program.

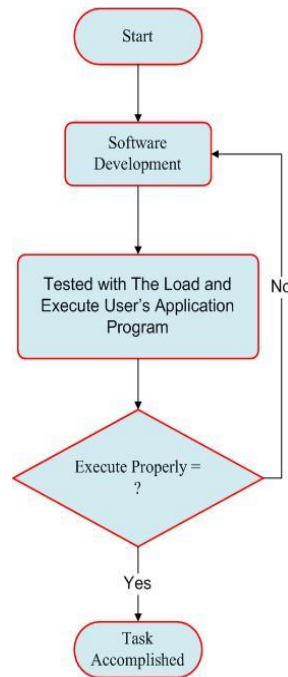


Fig. 3. Monitor Program Testing

5. Discussion

A through free run test on the UMP-EVT system will be performed to ensure system reliability. Likewise, a monitor program will be developed, assembled, and downloaded into the EEPROM or NVRAM. Several tests of mini operating system will be tested several times and prove that the system is reliable and sufficiently stable. It will show that the monitor program is able to communicate with the computer and capable of performing several commands issued from the host.

5.1. Survey Result

A survey on student's understanding in embedded systems was conducted to detect the level of understanding in this course and the feedback from the students if there are develop in-house microcontroller educational development system based on the MCS51, HC11, and PIC 16 series microcontroller were developed. So far only 58 responses from the students in FKEE who replied the surveys and preliminary results are encouraging. The majority of the students found the UMP-EVT

system will be helpful in understanding the knowledge in embedded system. The UMP-EVT system will also help them to better understand how the microcontrollers work and how hardware and software work together if the UMP-EVT are built. The instructors teaching this lab noticed that the need for this UMP-EVT system could make a significant improvement in students' performance and understanding of the lab. For more detail on this UMP-EVT system's survey, please log on to this webpage, "http://www.kwiksurveys.com/online-survey.php?surveyID=BIEIM_5d8a6dc9".

6. Conclusion

A prototype of UMP-EVT system will be designed and developed as teaching and learning tools and the system can be used extensively in experiment or project for diploma, undergraduate and short courses. The UMP-EVT system will provide a simple application board that is suitable for the students to test their capabilities and to improve their knowledge in this course. A mini operating UMP-EVT system based on IDE concept will be developed to integrate the basic software such as communication software, text editor, cross assembler and compiler.

Acknowledgment

Financial and management support from the Universiti Malaysia Pahang through short-term funding vote RDU090344 is acknowledged with gratitude.

References

- [1] Benjamin, M., Kaeli, D., And Platcow, R. 2006. Experiences with the Blackfin Architecture in an Embedded Systems Lab. Wcae '06
- [2] Butler, J. And Brockman, J. Web-Based Learning Tools on Microprocessor Fundamentals for a First-Year Engineering Course
- [3] Chandana Prasad et al., Computer System Organization and Architecture. Pearson Prentice Hall, Selangor, 2003.
- [4] Celoxica. 2006. Dk Design Suite. <http://www.celoxica.com/products/dk/default.asp>.
- [5] Cottrell, S. And F. Vahid. A Logic Enabling Configuration by Non-Experts in Sensor Networks. Hfc. 2005.
- [6] (Datasheet) 8-bit Microcontroller with 8K Bytes In-System Programmable Flash, Atmel Corporation, 2007, pp. 1-376, [Online]. Available: <http://www.atmel.com>
- [7] Ecos. <http://ecos.sourceforge.org/>
- [8] F. Pardo, J.A. Boluda and E. de Ves, "Development Board for the Microcontroller Lab", Proc TELECOM'2002, Santiago de Cuba, Cuba, July 2002, [online]. Available: http://tapec.uv.es/papers_en.html
- [9] Halit Eren (2004). "Electronic Portable Instruments: Design and Applications." CRC Press United
- [10] Halit Eren (2004). "Electronic Portable Instruments handbook." 3rd Ed. Mc. Graw Hill, US.32-37
- [11] Hapsim. <http://www.helmix.at/hapsim>
- [12] Hennessy, J. And Patterson, D. Computer Architecture – A Quantitative Approach. Morgan Kaufman Publishers. 3rd Edition. 1996
- [13] Hodge, H. Hinton, H.S, and Lightner, M. Virtual Circuit Laboratory. Asee. American Society for Engineering Education. 2000
- [14] I.S. Mackenzie, The 8051 Microcontroller, 3rd Ed., New Jersey, NY: Prentice Hall, 1999.
- [15] Images Scientific Instruments. <http://imagesco.com>
- [16] J. W. Carter, Microprocessor Architecture and Microprogramming - A State Machine Approach. Prentice-Hall, Englewood Cliffs, NJ, 1996.
- [17] Lcc. <http://www.cs.princeton.edu/software/lcc/>

- [18] Levis, P. And Culler, D. 2002. Maté: A Tiny Virtual Machine for Sensor Networks. *Sigops Oper. Syst. Rev.* 36, 5 (Dec. 2002), 85-95.
- [19] M. Gunes, M.A. Thornton, F. Kocan, S.A. Szygenda, A survey and comparison of digital logic simulators, *Circuits and Systems*, 2005. 48th Midwest Symposium on, 2005, pp. 744-749 Vol. 741.
- [20] N.M.K. Nik Yusoff, (2006 Jan), DEE3263 Microcontroller Technology – Student Performance Report, Universiti Malaysia Pahang, Malaysia.
- [21] R.S.K Selvakumar, Intel Microcontroller 8051 Educational Development Board System: User Manual, UMP, 2008
- [22] Ricks, K. G., Jackson, D. J., and Stapleton, W. A. 2005. An Evaluation of the Vme Architecture for Use in Embedded Systems Education. *Sigbed Rev.* 2, 4 (Oct. 2005), 63-69.
- [23] Smith, J. And Nair, R. *Virtual Machines: Versatile Platforms for Systems and Processes*. Morgan-Kaufman Publishers. 2005.
- [24] Stark, R., Schmid, J, and Borger, E. *Java and the Virtual Machine- Definition, Verifications, and Validation*. 2001.
- [25] Virdes Development System. [Http://Avoron.Com/Index.Php](http://Avoron.Com/Index.Php)
- [26] W. H. Gothmann, *Digital Electronics - An Introduction to Theory and Practice*. Prentice-Hall, Englewood Cliffs, NJ, USA, 1977.
- [27] VMware. [Http://Www.Vmware.Com/](http://Www.Vmware.Com/)
- [28] Windriver Systems. [Http://Www.Windriver.Com/](http://Www.Windriver.Com/)

Bibliography



Raja Saravana Kumar Selvakumar received the B.E Engineering degree in Electronics in 2009 from Universiti Malaysia Pahang, Kuantan, Pahang, where he is currently working towards the M.E Engineering in Electronics. He has published a small number of papers in conferences proceedings. His main field of research is on the techniques for microprocessor and microcontroller design implementation as well as the development of the good operating condition of digital embedded control system. He is familiar with the developing of evaluation tool that combine the use of a personal computer along with the use of microprocessor and microcontroller system equipment connected to it.



Kamarul Hawari Ghazali received his B.E.E. and M.E.E. from Universiti Teknologi Malaysia and Ph.D. from Universiti Kebangsaan Malaysia in 2009. He is currently the Deputy Dean of Research and Postgraduate studies at Faculty of Electrical & Electronics Engineering in Universiti Malaysia Pahang. He serves as a Lecturer of numerous short courses to industry as his expertise in industrial control technology. His current research interests include the application of digital and image signal processing in instrumentation and measurement, the application of vision control, automation and intelligent system, and renewable and alternative energy.



Nik Mohd Kamil Nik Yusoff received the B.E. Engineering degree from Arizona State University, USA in 1987 and M.E.E from Universiti Teknologi Malaysia in 1991, Skudai, Johor. He is currently a Senior Lecturer with Faculty of Electrical and Electronics Engineering, Universiti Malaysia Pahang. He is also involved in several research projects funded by local universities and private sectors and the author and co-author more than 50 papers in international scientific journals and conferences proceeding. He won several awards in local and international exhibitions and involved as a consultant in many fields. His research interest including the design of embedded processor architecture, telephone system and network such as switching and broadband communications, wireless system and home automation.