



LUND UNIVERSITY

On Event-Based Sampling for LQG-Optimal Control

Thelander Andrén, Marcus; Bernhardsson, Bo; Cervin, Anton; Soltesz, Kristian

2018

Document Version:
Other version

[Link to publication](#)

Citation for published version (APA):

Thelander Andrén, M., Bernhardsson, B., Cervin, A., & Soltesz, K. (2018). *On Event-Based Sampling for LQG-Optimal Control*. Poster session presented at Reglermöte 2018, Stockholm, Sweden.

Total number of authors:

4

General rights

Unless other specific re-use rights are stated the following general rights apply:

Copyright and moral rights for the publications made accessible in the public portal are retained by the authors and/or other copyright owners and it is a condition of accessing publications that users recognise and abide by the legal requirements associated with these rights.

- Users may download and print one copy of any publication from the public portal for the purpose of private study or research.
- You may not further distribute the material or use it for any profit-making activity or commercial gain
- You may freely distribute the URL identifying the publication in the public portal

Read more about Creative commons licenses: <https://creativecommons.org/licenses/>

Take down policy

If you believe that this document breaches copyright please contact us providing details, and we will remove access to the work immediately and investigate your claim.

LUND UNIVERSITY

PO Box 117
221 00 Lund
+46 46-222 00 00

On Event-Based Sampling for LQG-Optimal Control

Marcus Thelander Andrén, Bo Bernhardsson, Anton Cervin, Kristian Soltesz

Department of Automatic Control, Lund University
 {marcus, bob, anton, kristian}@control.lth.se



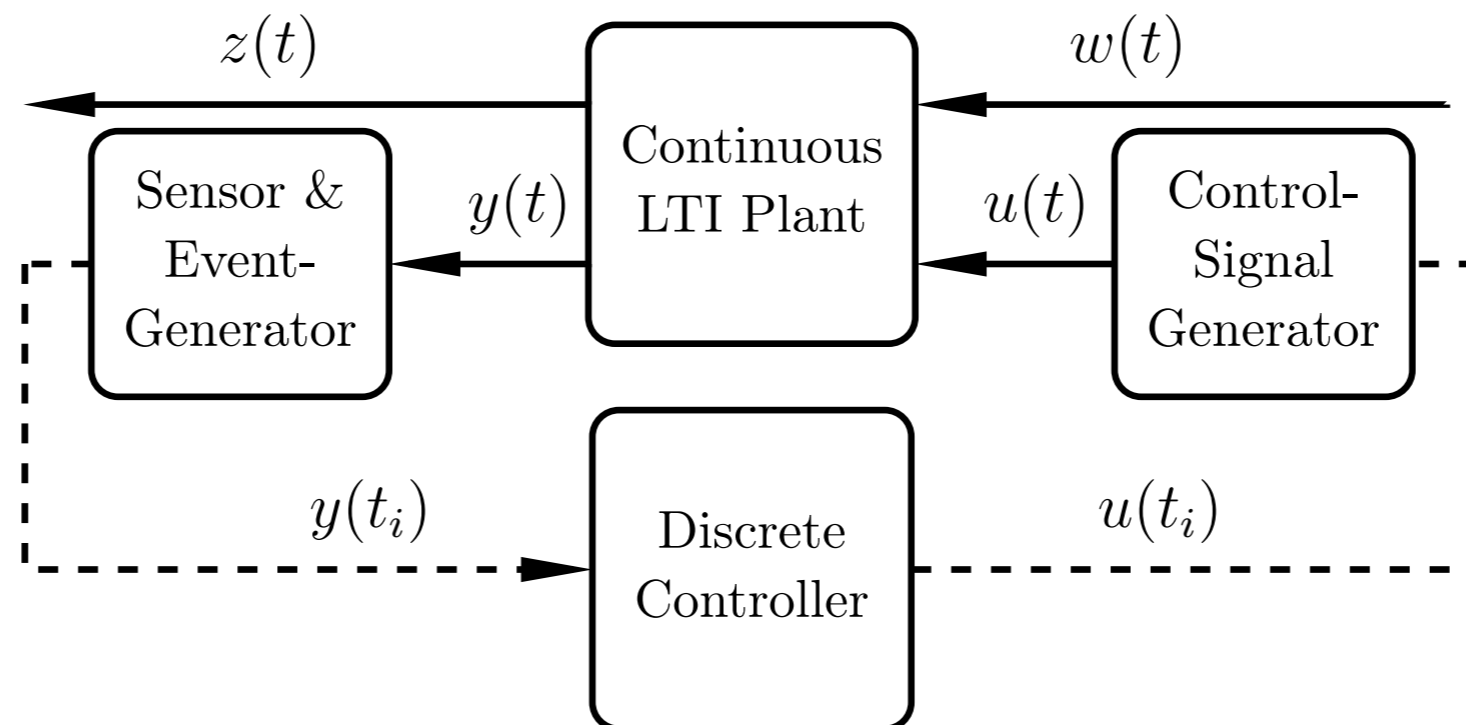
LUND
UNIVERSITY

INTRODUCTION

Event-based control is the concept of sampling and actuating based on system signals rather than a periodic timer, with the goal of more resource-efficient control. We consider the classic LQG formulation, with an added penalty ρ on the average sampling rate f :

$$\text{Minimize } J = \lim_{T \rightarrow \infty} \frac{1}{T} \mathbb{E} \left[\int_0^T z(t)^\top z(t) dt \right] + \rho f.$$

For this objective, the optimal controller structure is available [1], and we consider the remaining problem of optimizing the sampling policy [2].

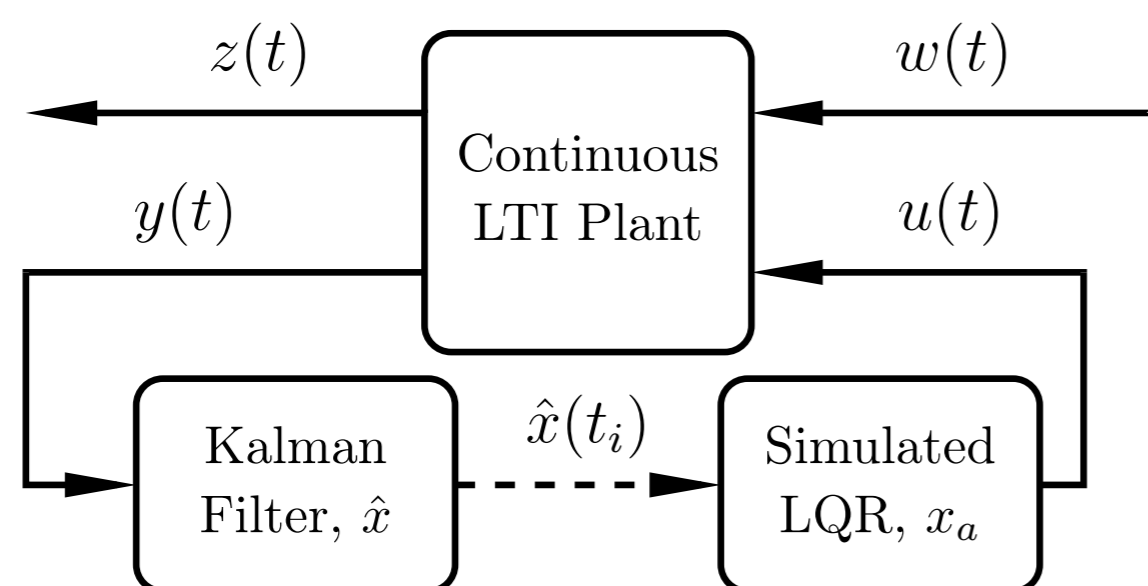


Our Contributions:

- Identifying an equivalent free boundary PDE formulation of the optimal sampling problem
- Deriving a numerical scheme to approximately compute the optimal sampling policy for general LTI systems, and observing that sampling thresholds can be non-convex
- Deriving tight bounds on the improvement over periodic sampling in the special case of multidimensional integrators ($A = 0$), see [2].

OPTIMAL CONTROLLER STRUCTURE

The optimal controller structure from [1] can intuitively be represented as:



When sampling we assign $x_a(t_i) = \hat{x}(t_i)$, and the error $\tilde{x} = \hat{x} - x_a$ is reset to zero. The error dynamics are:

$$\text{Dynamics: } \begin{cases} d\tilde{x} = A\tilde{x}dt + d\epsilon, \\ \tilde{x}(t_i) = 0, \end{cases} \quad \text{Noise: } \begin{cases} \mathbb{E}[d\epsilon] = 0, \\ \mathbb{E}[d\epsilon d\epsilon^\top] = R dt \succ 0. \end{cases}$$

This fundamental reset system determines the closed-loop cost

$$J = \gamma_0 + \lim_{T \rightarrow \infty} \frac{1}{T} \mathbb{E} \left[\int_0^T \tilde{x}(t)^\top Q \tilde{x}(t) dt \right] + \rho f,$$

where γ_0 is the optimal continuous-time LQG-cost.

OPTIMAL SAMPLING PROBLEM

Problem: Find the optimal trigger threshold in the \tilde{x} -space, from which we reset \tilde{x} to zero and pay ρ . This threshold can be expressed in the *relative value function* $V(\tilde{x})$ of the optimization problem, where it is optimal to sample when

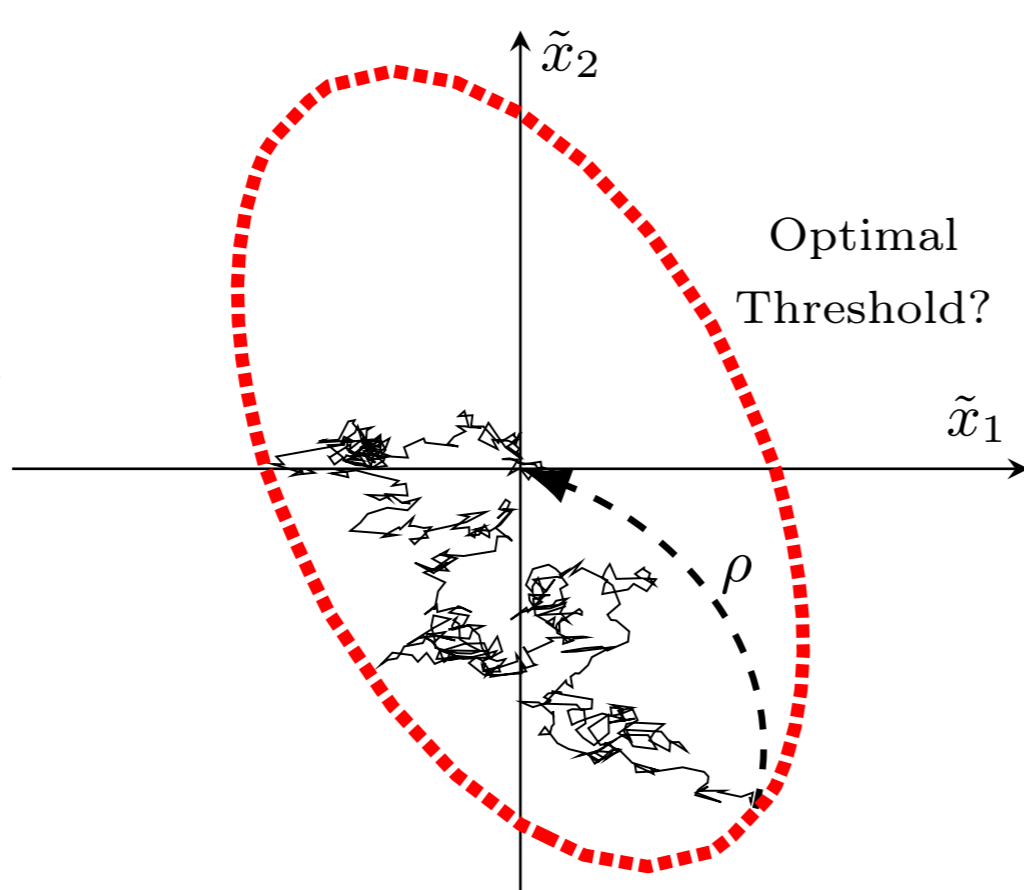
$$V(\tilde{x}) = 0.$$

V satisfies a free boundary PDE:

$$\tilde{x}^\top Q \tilde{x} + \tilde{x}^\top A^\top \nabla V + \frac{1}{2} \text{Tr}(R \nabla^2 V) - J = 0, \quad V(\tilde{x}) \leq 0, \quad \forall \tilde{x}$$

Conditions on the Free Boundary:

$$\text{Dirichlet: } V(\tilde{x}) = 0, \quad \text{Neumann: } \nabla V = 0.$$



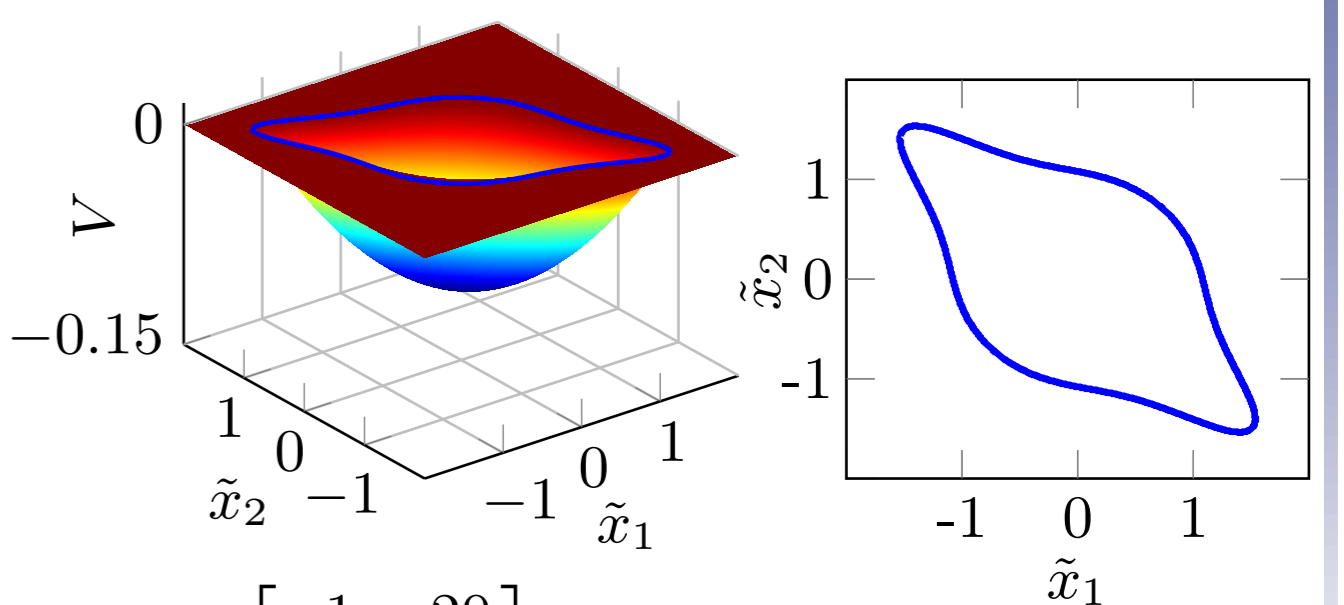
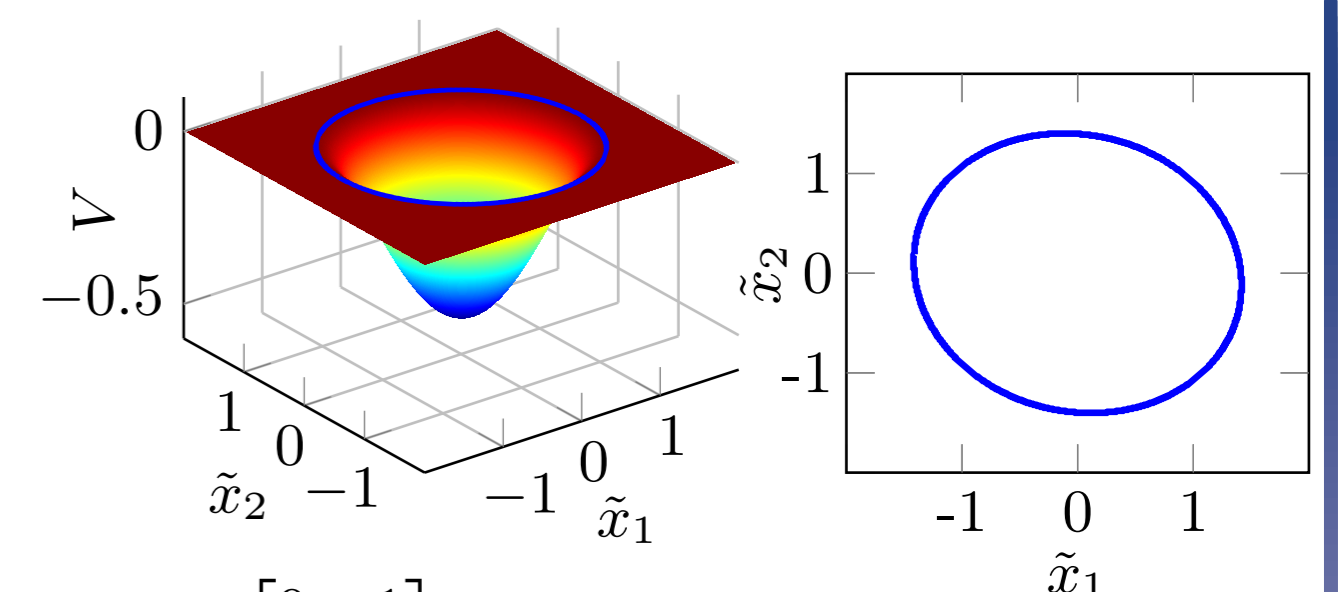
NUMERICAL SOLUTION

Numerical scheme:

- Finite-difference approximation
- Simulate dynamic version of PDE
- Enforce $V(\tilde{x}) \leq 0$
- Run until stationarity

Note:

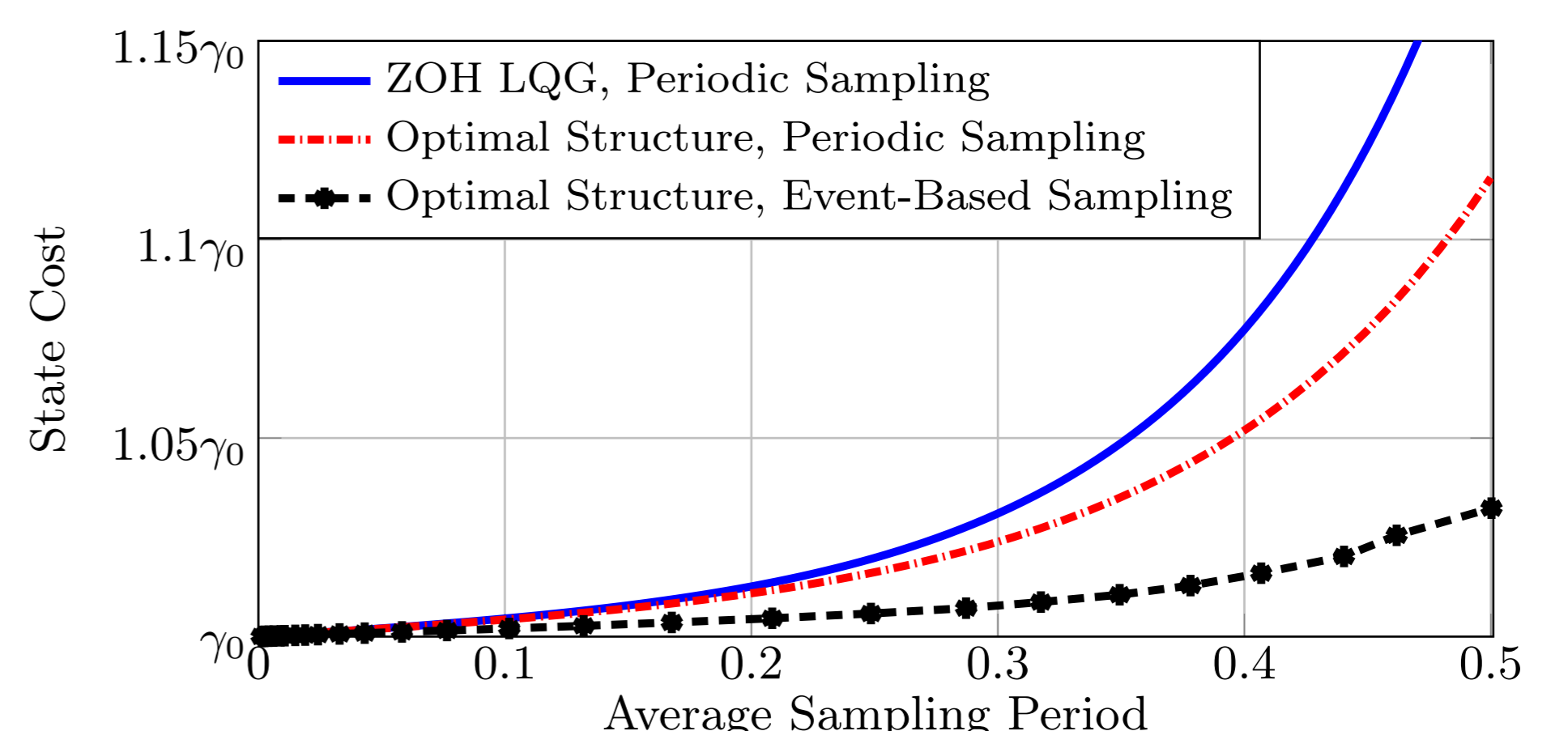
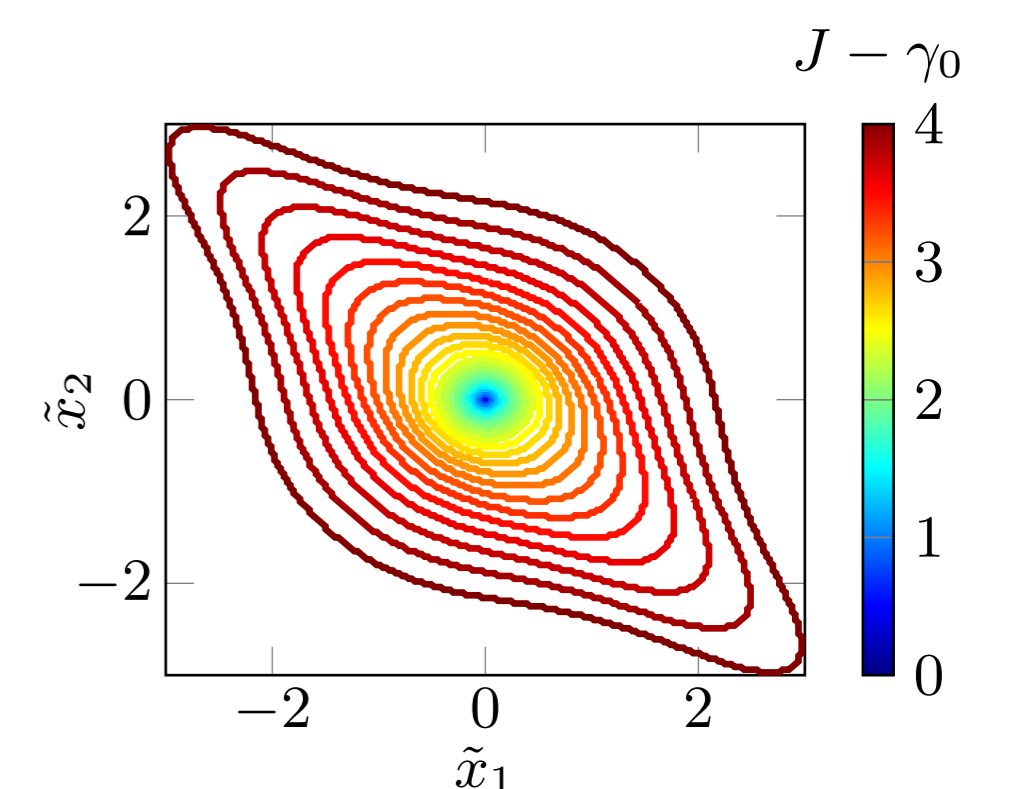
The optimal thresholds are not necessarily convex. Typically, this is the case for systems with strong cross-coupling between the states.



COMPARISON TO PERIODIC SAMPLING

By numerically computing the optimal sampling policy, we can compare the closed-loop performance using periodic- and event-based sampling for different average sampling periods. Example:

$$A = \begin{bmatrix} 0 & 5 \\ 5 & 0 \end{bmatrix}, \quad R = Q = I.$$



REFERENCES

- [1] L. Mirkin. "Intermittent Redesign of Analog Controllers via the Youla Parameter". *IEEE Trans. Automatic Control*, vol 62, no. 4, 2017.
- [2] M. Thelander Andrén, B. Bernhardsson, A. Cervin, K. Soltesz. "On Event-Based Sampling for LQG-Optimal Control". In: *56th IEEE Conference on Decision and Control*, 2017.