



Antisense repression of sucrose synthase in carrot (*Daucus carota* L.) affects growth rather than sucrose partitioning

Guo-Qing Tang and Arnd Sturm*

*Friedrich Miescher-Institut, Maulbeerstrasse 66, 4058 Basel, Switzerland (*author for correspondence)*

Received 20 April 1999; accepted in revised form 21 August 1999

Key words: antisense repression, *Daucus carota*, sucrose partitioning, sucrose synthase, sucrose utilization

Abstract

To unravel the roles of sucrose synthase in carrot, we reduced its activity in transgenic carrot plants by an antisense approach. For this purpose, the cDNA for the main form of carrot sucrose synthase was expressed in antisense orientation behind the 35S promoter of cauliflower mosaic virus. In independent antisense plant lines grown in soil, sucrose synthase activity was reduced in tap roots but not in leaves. In the sink organs, sucrose utilization was markedly decreased and higher levels of sucrose but lower levels of UDP-glucose, glucose, fructose, starch and cellulose were found. The phenotype of the antisense plants clearly differed from that of control plants. Both leaves and roots were markedly smaller, and the antisense line with the lowest sucrose synthase activity also developed the smallest plants. In most of the plant lines, the leaf-to-root dry weight ratios were not changed, suggesting that sucrose synthase in carrot is a major determinant of plant growth rather than of sucrose partitioning. In contrast to the acid invertases, which are critical for partitioning of assimilated carbon between source leaves and tap roots (Tang *et al.*, *Plant Cell* 11: 177–189 (1999)), sucrose synthase appears to be the main sucrose-cleaving activity, feeding sucrose into metabolism.

Introduction

Partitioning of photoassimilates between source leaves and different heterotrophic plant organs (sink organs) is a highly regulated process with several control points (Gifford and Evans, 1981). In general, it is accepted that sink strength is a major determinant of this process (Ho, 1988). However, little is known about the key molecules that determine and control this force. Identification of these molecules undoubtedly would fill a gap in our knowledge about one of the most fundamental and important processes in plants. At the same time, it may also lead to successful manipulation of crop plants increasing yield.

In most plants, sucrose is both the primary product of photosynthesis and the transport form of assimilated carbon (Copeland, 1990). Upon arrival in the storage organs, the disaccharide may become converted into storage polymers. Furthermore, in these organs sucrose is also utilized for the biosynthesis of structural molecules such as cell wall polysaccha-

rides and membrane lipids, as well as for energy metabolism. Because sucrose can only enter these diverse biochemical pathways after its cleavage into hexoses (Avigad, 1982), the sucrose-cleaving enzymes invertase (Sturm, 1999) and sucrose synthase (Sturm and Tang, 1999) are also important control points of photosynthate allocation (Ho, 1988).

Sucrose synthase is a glycosyltransferase which converts the disaccharide in the presence of UDP into UDP-glucose and fructose (Kruger, 1990). It is a cytoplasmic enzyme and most plants seem to have two isoforms. Despite their high sequence similarity, the regulation of their genes is markedly different (Fu and Park, 1995; Sturm *et al.*, 1999). Sucrose synthase channels sucrose into numerous pathways, most notably the biosynthesis of cell wall polymers (Carpita and Vergara, 1998) and starch (Smith *et al.*, 1995). In addition, it is crucial for energy metabolism (Chourey *et al.*, 1998), sucrose partitioning (Wang *et al.*, 1993; Zrenner *et al.*, 1995; Weber *et al.*, 1996) and adaptation of plants to anoxia and cold (Salanoubat and

Belliard, 1989; Marañón *et al.*, 1990; Crespi *et al.*, 1991).

The expression of sucrose synthase has been manipulated by the antisense technique in transgenic potato (Zrenner *et al.*, 1995). Reduction of enzyme activity led to a marked decrease in the starch content of tubers and, therefore, to a marked reduction in tuber yield. Thus, in potato, sucrose synthase is a crucial determinant of sink strength, and a similar function has been proposed for the enzyme during the early phase of tomato fruit development (Wang *et al.*, 1993) and the storage phase of bean cotyledons (Weber *et al.*, 1996). Common to tubers of potato, fruits of tomato, and cotyledons of faba bean is that sucrose is converted into starch during the developmental stage, when sucrose synthase activity is high. In contrast, the role of sucrose synthase in plants which store photoassimilates mainly as small soluble sugars, such as sugar cane, sugar beet and carrot, is not clear and its elucidation was the goal of the present study.

Mature carrot tap roots accumulate up to 8% of a mixture of sucrose, glucose, and fructose in vacuoles of storage parenchyma cells (Peterson and Simon, 1986; Keller, 1988). Assimilated carbon is thought to be transported into the storage root as sucrose but sucrose hydrolysis prior to uptake into parenchyma cells appears to be minimal (Daie, 1984). Thus, utilization of sucrose must be intracellular. In vegetative organs of carrot plants (leaves and roots), only one gene for sucrose synthase (*Susy*Dc1*) is expressed. This gene appears to be sink-specific and expression was not found in leaf lamina (Sturm *et al.*, 1999). To unravel the roles of this sucrose synthase isoform in metabolism and partitioning of sucrose, we decreased its activity by an antisense approach (Stitt and Sonnewald, 1995). The results of phenotypical and biochemical examination of the transgenic plants demonstrate an important function of the enzyme in plant growth rather than in sucrose partitioning between source and sink organs.

Material and methods

Plant material

Seeds of carrot (*Daucus carota* L. cv. Nantaise) were purchased from Hild (Mambach, Germany) and sterilized consecutively for 15 min in 70% ethanol and 10% sodium hypochlorite. After extensive washing in sterile water, the seeds were germinated on 0.8%

agar in the dark at 24 °C. After 7 days, hypocotyls were harvested and cut into segments of about 0.5 cm for transformation with agrobacteria. Because it is extremely time- and labour-consuming to generate T₂ progeny and T₂ seeds (carrot plants are biennials and cannot easily be selfed; Peterson and Simon, 1986), mature transgenic plants were analysed at the level of primary transformants. To compensate for the disadvantages of studying T₁ plants, four independent plant lines with clearly reduced sucrose synthase activity were compared.

Recombinant DNA technology

A long PCR fragment (2134 bp) of a carrot cDNA for sucrose synthase (2866 bp; Šebková *et al.*, 1995; EMBL accession number X75332) was ligated in reverse orientation into the *Sma*I and *Sac*I sites of the binary vector pBI121 (Clontech). In this construct, the sucrose synthase PCR fragment replaced the gene for β -glucuronidase (*GUS*); the *Sma*I site used is located within the multiple cloning site behind the 35S promoter of CaMV, and the *Sac*I site at the start of the 3' non-coding sequence of nopaline synthase. For amplification of the cDNA fragment, a *Sac*I site was introduced into the first primer ca. 20 bp upstream of the translation initiation codon (5'-GAAAGTGAGCTCACAAGGCTTGATCACAATGGG-3'). The sequence around the naturally occurring *Pvu*II site was used as the second primer (nt 2234–2239 of the cDNA; like *Sma*I, *Pvu*II gives rise to blunt-end DNA (5'-TGATCTCAGCTGGACCACCATGGAG-3'). The binary vector was checked by sequencing and then introduced into *Agrobacterium tumefaciens* LBA4404 (Hoekeman *et al.*, 1983) via direct DNA transformation (Hofgen and Willmitzer, 1988).

Plant transformation and regeneration

Transformation of hypocotyl segments and regeneration of transgenic plants was carried out as described by Hardegger and Sturm (1998). Transgenic plants were grown in soil in a growth chamber at 22 °C and a day/night cycle of 16 h/8 h.

Protein gel blot analysis

Soluble proteins were extracted by following the procedure of Šebková *et al.* (1995). Briefly, 200–300 mg of tissue (callus or tap root) was homogenized with a Polytron homogenizer in 1 ml of ice-cold 20 mM Hepes-KOH buffer at pH 7.5 containing 1 mM EDTA,

1 mM DTT and 1 mM PMSF. After centrifugation for 10 min at 10000 rpm and 4 °C, the supernatant containing the soluble proteins was collected.

Protein samples (10 µg/lane) were separated on a 12.5% SDS-polyacrylamide gel and blotted onto nitrocellulose membranes. Subsequently, ECL immunological detection of sucrose synthase was performed as described by the manufacturer (Amersham). The anti-serum against sucrose synthase from maize (Chourey *et al.*, 1986) was diluted 1:2000.

DNA gel blot analysis

DNA was isolated from small carrot plantlets as described by Murray and Thompson (1980). DNA was digested with *EcoRI*, fractioned on a 0.8% agarose gel (10 µg/lane) and transferred onto a nylon membrane (Hybond N, Amersham). The CaMV 35S DNA fragment was labelled with ³²P by following the manufacturer's protocol (Amersham) for the random-primer labelling kit. Hybridization and washing of the blots was performed by standard procedures (Sambrook *et al.*, 1989).

RNA gel blot analysis

Total RNA was prepared by the method described by Prescott and Martin (1987) modified by adding 20 mg of Polyclar AT (Serva) per gram of tissue before grinding in liquid nitrogen. For RNA gel blot analysis, total RNA (10 µg/lane) was separated on a 1.2% agarose gel, containing 6% formaldehyde (Sambrook *et al.*, 1989). The cDNA for sucrose synthase (2866 bp; Šebkova *et al.*, 1995) was labelled with ³²P by random priming (Sambrook *et al.*, 1989). As a probe for a constitutively expressed gene, a 1700 bp fragment (*EcoRI/EcoRI*) of the 18S rRNA gene from tomato was used (Schmidt-Puchta *et al.*, 1989). Hybridization and washing of the blots was performed by standard procedures (Sambrook *et al.*, 1989).

Determination of soluble sugars, starch and cellulose

Leaf or tap root samples of mature plants (0.5 g) were ground in liquid nitrogen and the powder extracted twice with 60% ethanol (0.5 ml each) at 60 °C for 15 min. Subsequently, the extracts were cleared by centrifugation. Aliquots of the supernatants (50 µl) were rapidly dried and the residues redissolved in 250 µl of water and kept at 100 °C for 10 min. After centrifugation, 25 µl of each sample was loaded onto a Dionex CarboPac PA-100 column (4 mm × 250 mm)

attached to a Dionex DX-300 HPLC system and a pulsed amperometric detector (Dionex, Sunnyvale, CA). Sugars were eluted with 120 mM NaOH at room temperature and a flow rate of 1 ml/min.

For the enzymatic determination of UDP-glucose (Stitt, 1989), aliquots of the supernatants of the 60% ethanol extracts (100 µl) were rapidly dried and the residues redissolved in the same volume of water. Aliquots of the leaf samples (10 µl) or of the tap root samples (100 µl) were diluted to 1 ml with assay buffer containing 100 mM Tris-HCl pH 8.5 and 6 mM NAD. After measuring absorbance at 340 nm, 0.02 units of UDP-glucose dehydrogenase were added. The mixtures were kept for 15 min at room temperature and the absorbance measurements repeated. The amounts of UDP-glucose were calculated from the absorbance differences and a standard curve.

After sugar extraction, the pellets were washed a few times with ice-cold water and dried. Determination of starch was carried out with a TC Starch Kit of Boehringer Mannheim (cat. No. 207 748) according to the manufacturer's instructions. The remaining pellets were used for cellulose determination according to Updegraff (1969). For this purpose, the pellets were extensively washed with ice-cold water and all non-cellulose sugars eliminated by hydrolysis in acetic/nitric acid prior to analysis.

Assay of sucrose synthase activity

The cleavage of sucrose by sucrose synthase was determined by a combination of the methods described by Avigad (1964), Morell and Copeland (1985) and Witt (1989). The assay buffer (20 mM Hepes-KOH pH 7.5) contained 100 mM sucrose and 2 mM UDP. The reaction was carried out at 30 °C. After 30 min, the reaction was stopped by boiling the sample for 1 min. The UDP-glucose produced was determined by its reduction with 1.5 mM NAD in the presence of an excess of UDP-glucose dehydrogenase (Type III, Sigma Chemical Company, St. Louis, MO), resulting in an increase in absorbance at 340 nm. The formation of 2 nmol of NADH corresponds to 1 nmol of UDP-glucose. Enzyme activity was expressed as nkat UDP-glucose formed per mg protein.

Assay of invertase activity

Leaf or tap root samples of mature plants (2 g) were homogenized in 5 volumes of ice-cold 25 mM

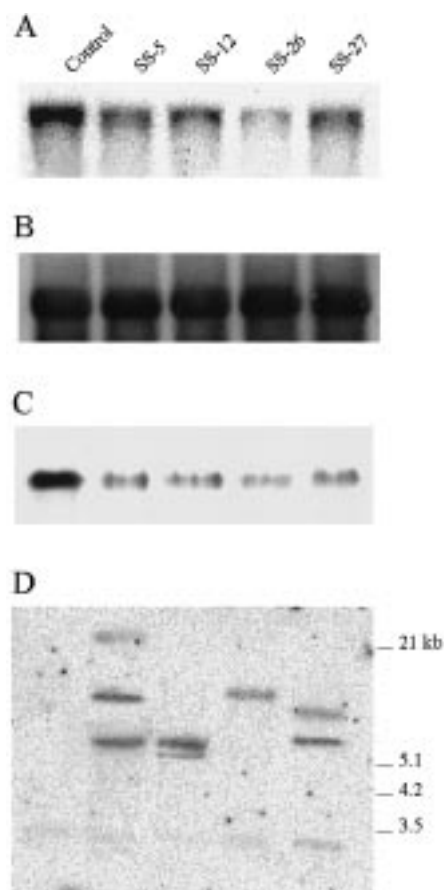


Figure 1. Molecular and biochemical characterization of transgenic carrot plants expressing antisense mRNA for sucrose synthase. Plants of the antisense cell lines SS-5, SS-12, SS-26, and SS-27 were grown in soil in a growth chamber for about 3 months. Plants harbouring the promoter of the gene for carrot cell wall invertase fused to the *GUS* reporter gene were used as non-antisense transgenic control. Total RNA or proteins were isolated from tap roots, and DNA from small plantlets, as described in Materials and methods. Ten μg of RNA, 10 μg of protein, or 10 μg of DNA restricted with *EcoRI* was loaded per lane. A. An RNA gel blot hybridized with the ^{32}P -labelled cDNA for the main form of carrot sucrose synthase. B. The RNA gel blot shown in A re-hybridized with a ^{32}P -labelled fragment of a genomic clone for the 18S rRNA of tomato (Schmidt-Puchta *et al.*, 1984) to demonstrate equal loading. C. A protein gel blot probed with an antibody raised against sucrose synthase from maize. D. A DNA gel blot hybridized with the ^{32}P -labelled CaMV 35S promoter.

sodium acetate buffer at pH 5.0 containing 0.5% 2-mercaptoethanol, 10 mM lysine, 1 mM EDTA and 0.1 mM phenylmethanesulfonyl fluoride (PMSF). The homogenates were centrifuged at $10\,000\times g$ for 30 min and the supernatants used for the determination of the activities of acid-soluble invertase and neutral/alkaline invertase. The pellets were extensively washed with

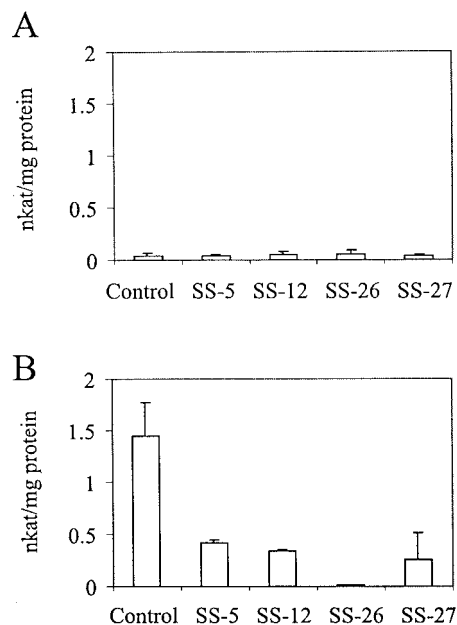


Figure 2. Residual sucrose synthase activity in source leaves (A) and tap roots (B) of transgenic carrot plants expressing antisense mRNA for the enzyme. Mature leaves or tap roots from 3-month old antisense carrot plants were harvested and sucrose synthase was extracted and measured as described in Materials and methods. Values are given as nanokatal per milligram protein and represent the mean \pm SD from analyses of 3–6 plants.

ice-cold water and cell wall proteins extracted with 5 volumes of 1 M NaCl overnight at 4 °C.

Invertase activity was assayed at 37°C on 50 mM sucrose in 13.5 mM citric acid and 26.5 mM disodium phosphate pH 4.6 for cell wall invertase, 10.5 mM citric acid and 29 mM disodium phosphate pH 5.4 for soluble acid invertase, and pH 7.5 for neutral/alkaline invertase. The reaction was stopped with alkaline copper reagent and the liberated reducing sugars were measured according to Somogyi (1952).

Assay of glucokinase and fructokinase activity

Glucokinase and fructokinase activities were determined according to Renz and Stitt (1993) in the soluble protein extracts used for the determination of sucrose synthase activity. Fructokinase activity was measured at room temperature in 50 mM Tris-HCl pH 7.9, containing 1.5 mM MgCl_2 , 1 mM ATP, 2 mM NAD, 2 units phosphoglucose isomerase from yeast, 2 units glucose-6 phosphate dehydrogenase from *Leuconostoc mesenteroides* and 20 μl protein extract. The reaction was started with fructose at a final concentration of 0.4 mM. Glucokinase activity was measured

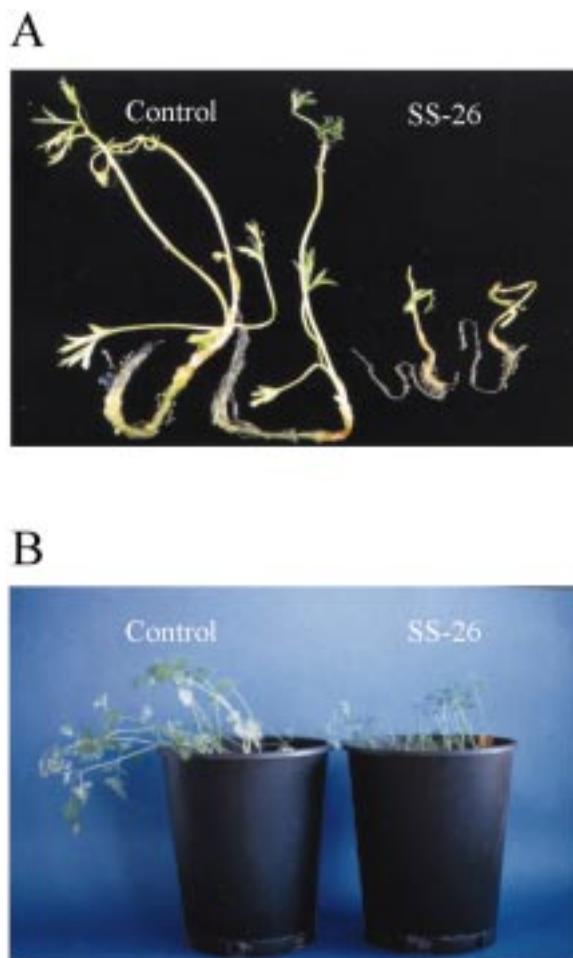


Figure 3. Phenotypic changes in transgenic plantlets expressing antisense mRNA for sucrose synthase. A. Plantlets of the control line and the antisense line SS-26 were grown for 2 weeks on half-strength Murashige and Skoog (1962) medium containing only macro- and microelements and 3% sucrose. The transgenic control plantlets harbour the promoter of the gene for carrot cell wall invertase fused to the *GUS* reporter gene. B. Plants were grown in soil for 4 weeks.

under the same reaction conditions except 1 mM glucose instead of fructose.

Microscopy

Tap roots of 3- to 4-month old carrot plants were harvested and washed. The phloem parenchyma tissue of a central section was cut with a microtome in thin cross sections, which were immediately stained with methylene blue (0.1 g in 100 ml water) or safranin (2 g in 100 ml 50% ethanol) and a few minutes later photographed at $\times 250$ magnification.

Results

Expression of antisense mRNA for sucrose synthase in transgenic carrot markedly reduces sucrose synthase activity in tap roots

A long fragment (2134 bp) of the cDNA for the main form of carrot sucrose synthase (Šebkova *et al.*, 1995; Sturm *et al.*, 1999) was cloned into the binary vector pBI121 in antisense orientation behind the 35S promoter of cauliflower mosaic virus (CaMV). The binary vector was introduced into the *Agrobacterium* strain LBA4404. Kanamycin-resistant agrobacteria were then used for transformation of hypocotyl segments of the carrot cultivar Nantes (Hardegger and Sturm, 1998). Transformed plant cells were selected

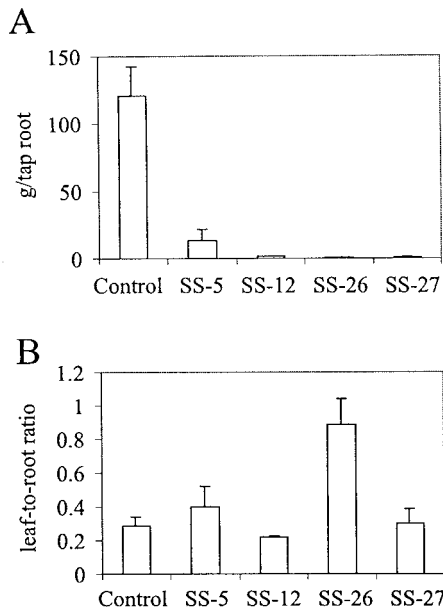


Figure 4. Fresh weight of tap roots (A) and leaf-to-root dry weight ratios (B) of transgenic carrot plants with antisense inhibition of sucrose synthase activity. Tap roots of 3-month old antisense plants were harvested and weighed. Values are given as grams per tap root and represent the mean \pm SD from analyses of 3–6 plants. For the determination of the leaf-to-root dry weight ratios, leaves and roots were separately harvested from representative plants of the four independent antisense plant lines. The organs were chopped into small pieces and immediately freeze-dried. All values represent the mean \pm SD of leaf-to-root dry weight ratios of 3–6 plants.

by applying the kanamycin derivative geneticin (G418) and about 15% of the hypocotyl segments developed viable calli. Homogeneously growing callus cultures were obtained after several rounds of subculture.

Soluble proteins of geneticin-resistant calli were extracted and analysed on protein gel blots with antibodies raised against sucrose synthase from maize (Chourey *et al.*, 1986). About 13% of the independent callus lines showed a marked (>80%) reduction in sucrose synthase polypeptide levels (data not shown) and only these lines were used for plant regeneration. For this purpose, we induced fast-growing suspension cultures from the selected callus cultures and then generated somatic embryos. As a non-antisense transgenic control, we used a carrot cell line harbouring 549 bp of the carrot cell wall invertase promoter fused to the reporter gene β -glucuronidase (*GUS*) (Ramloch-Lorenz *et al.*, 1993).

Mature plants were grown in soil from four independent lines of cells with markedly reduced sucrose synthase activity (lines SS-5, SS-12, SS-26 and SS-27). Tap roots of 3-month old plants had clearly

reduced levels of sucrose synthase transcripts (Figure 1A) and sucrose synthase protein (Figure 1C). On average, sucrose synthase activity was reduced to 18% of the activity in tap roots of control plants (Figure 2B; SS-5, 29%; SS-12, 23%; SS-26, 0.7%; SS-27, 18%). In contrast, the levels of sucrose synthase activity in leaves of these plants were similar to those in leaves of control plants (Figure 2A). Analysis of DNA from the four plant lines revealed different T-DNA integration patterns in the independent transformants (Figure 1D). On average, 2 or 3 copies of the transgene were present in the genomes of the antisense plants. A correlation between copy number and the level of reduction of sucrose synthase activity in tap roots was not found; plant line SS-26, which contained only a single copy of the transgene (Figure 1D), had the lowest enzyme activity (Figure 2B).

Carrot plants with reduced sucrose synthase activity are distinctly smaller than control plants

Cotyledon-stage somatic embryos from the four antisense cell lines and from non-antisense transgenic control cells were transferred onto semisolid agar containing half-strength MS medium (Murashige and Skoog, 1962) with only minerals and 3% sucrose, and kept at 27 °C under a 16 h light/8 h dark regime. Within 2 weeks, transgenic control plantlets developed a long primary root and on average four small leaves. In contrast, the sucrose synthase antisense plantlets were much smaller and retarded in their development, for example with thinner and shorter roots and only up to two leaves (Figure 3A). During further growth in soil the antisense plants kept their dwarfish appearance (Figure 3B). After 4 months in soil, the non-antisense transgenic control plants had large tap roots (mean ca. 120 g fresh weight) (Figure 4A), whereas those of the four sucrose synthase antisense lines remained small (Figures 4A and 5A–D). Their mean tap root fresh weight was reduced up to 200-fold (Figure 4A; SS-5, 11.2%; SS-12, 1.1%; SS-26, 0.5%; SS-27, 0.8% of the fresh weight of tap roots of control plants). The plant line with the largest reduction of sucrose synthase activity in roots (Figure 2B) had the smallest tap roots (Figures 4A and 5C). The mean dry weight of the tap roots was also reduced up to 200-fold (data not shown).

Both leaves and roots of the sucrose synthase antisense plants were markedly smaller (Figure 5A–D). The leaves showed no alterations in morphology. In cross-sections of antisense roots, the four typical

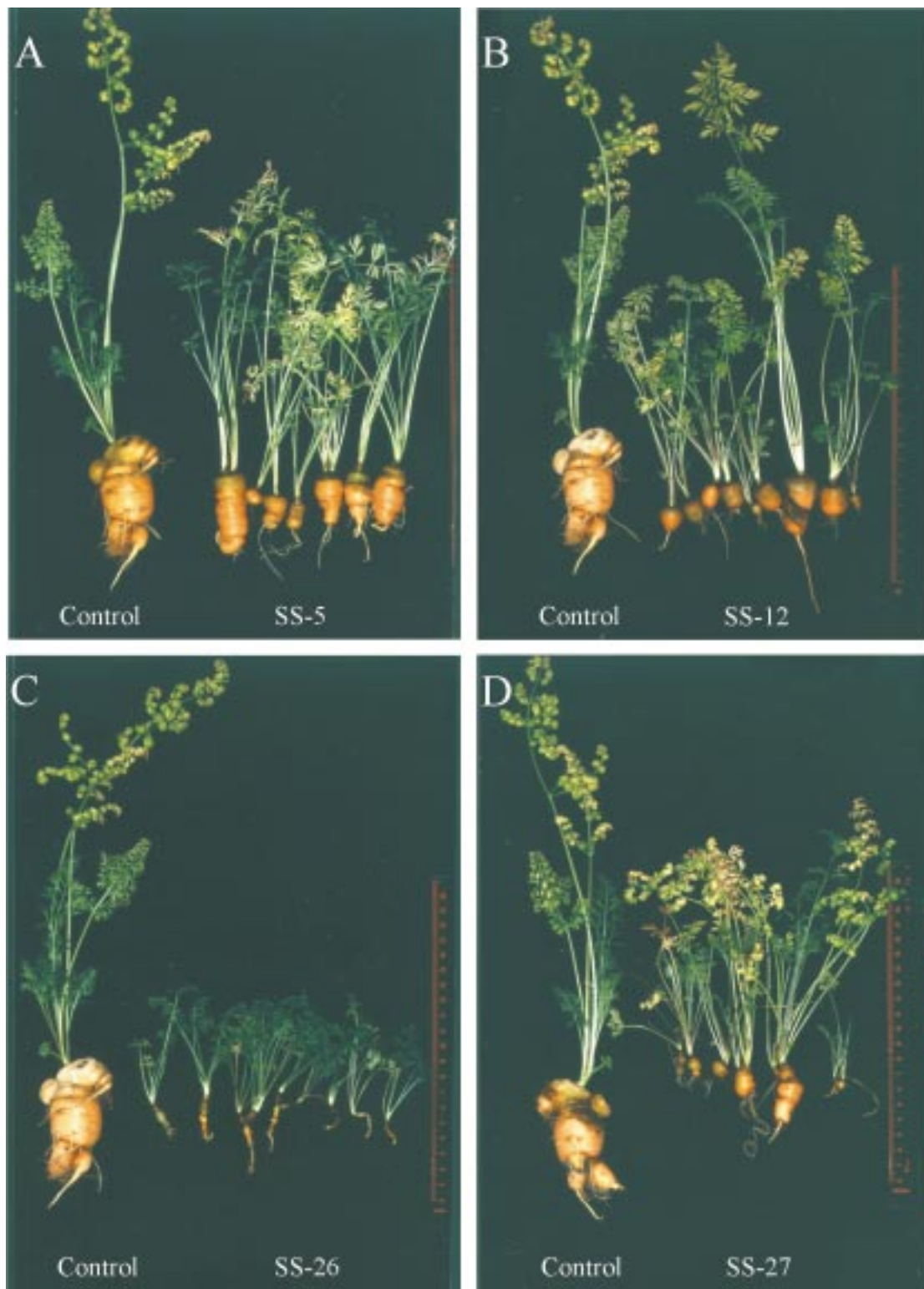


Figure 5. Phenotypic changes in mature transgenic plants. Plants were grown in soil in a growth chamber for about 4 months. The control plants are transgenic and harbour the promoter of the gene for carrot cell wall invertase fused to the *GUS* reporter gene. Representative sucrose synthase antisense plants of plant line SS-5 (A), SS-12 (B), SS-26 (C), and SS-27 (D).

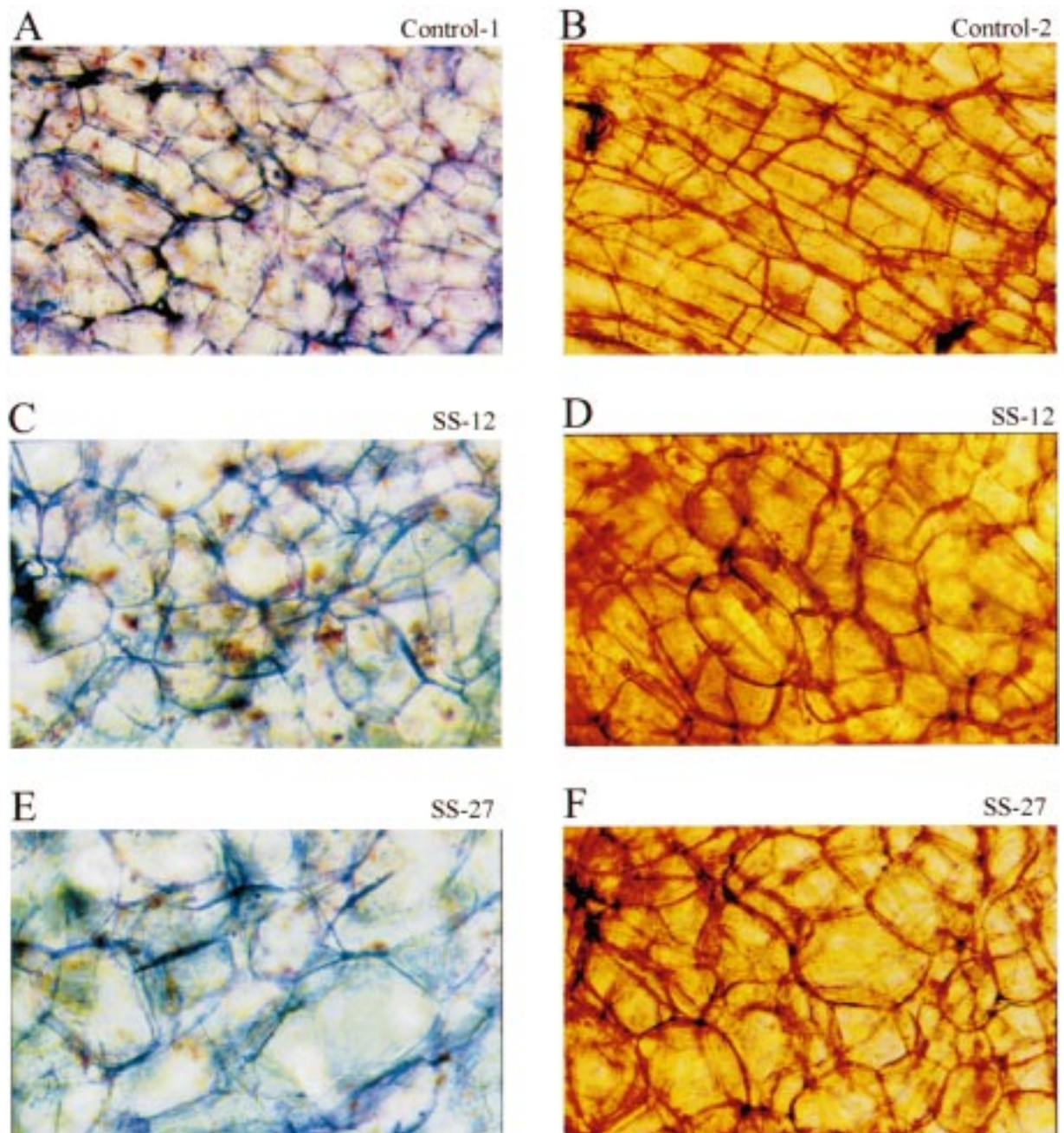


Figure 6. Phenotypical changes in mature storage parenchyma cells of antisense tap roots. Plants were grown in soil in a growth chamber for about 4 months. The control plants are transgenic and harbour the promoter of the gene for carrot cell wall invertase fused to the *GUS* reporter gene. Tap roots were harvested and phloem parenchyma thin tissue sections cut with a microtome. The sections were either stained with methyleneblue (A, C, E) or safranin (B, D, F) and a few minutes later photographed at $\times 250$ magnification. A and B. Control tap roots. C and D. Tap roots of SS-12 plants. E and F. Tap roots of SS-27 plants.

tissues of the carrot secondary storage root (periderm, phloem parenchyma, cambium, and xylem parenchyma; Esau, 1940; Peterson and Simon, 1986; Sturm *et al.*, 1999) were easily identified and no changes in the general architecture of the root were found (data not shown). The volume of mature storage parenchyma cells of the phloem of the antisense tap roots was several-fold larger (Figure 6C–F) than that of control tap roots (Figure 6A and B). Furthermore, instead of rectangular with sharp edges and corners, the cells were more spherical with less pronounced edges and corners.

In order to determine whether partitioning of photoassimilates was altered in the sucrose synthase antisense plants, mean leaf-to-root dry weight ratios were compared to those of non-antisense control plants (Figure 4B). With the exception of line SS-26, which had the lowest sucrose synthase activity in roots (Figure 2B), the leaf-to-root ratios of antisense and control plants were not substantially different. In SS-26, the leaf-to-root dry weight ratio was shifted in favour of leaves (Figure 4B).

Carrot tap roots with reduced sucrose synthase activity accumulate more sucrose but less hexoses, UDP-glucose, starch and cellulose

In order to analyse the influence of reduced sucrose synthase activity on sucrose metabolism in transgenic carrot plants, extracts of control and antisense plants were analysed for their sugar content. Mature leaves of antisense plants had up to fourfold higher sucrose levels, whereas the levels of glucose and fructose were not changed (Figure 7A). Tap roots of the sucrose synthase antisense plants had up to twofold higher sucrose levels than control tap roots, and the levels of glucose and fructose were strongly reduced to ca. 19% of control tap roots (Figure 7B).

UDP-glucose, a product of sucrose synthase activity together with fructose, is an important intermediate in the biosynthesis of numerous plant compounds (Kleczkowski, 1994; Smith *et al.*, 1995; Quick and Schaffer, 1996; Carpita and Vergara, 1998). Analysis of the nucleotide sugar in the main organs of antisense plants revealed that in mature leaves the UDP-glucose level was not changed (Figure 8A), but in tap roots it was up to 70% lower than the control (Figure 8B). These levels correlated well with the sucrose synthase activities in leaves and roots of the antisense plants (Figure 2A and B). Tap roots of line SS-26, which

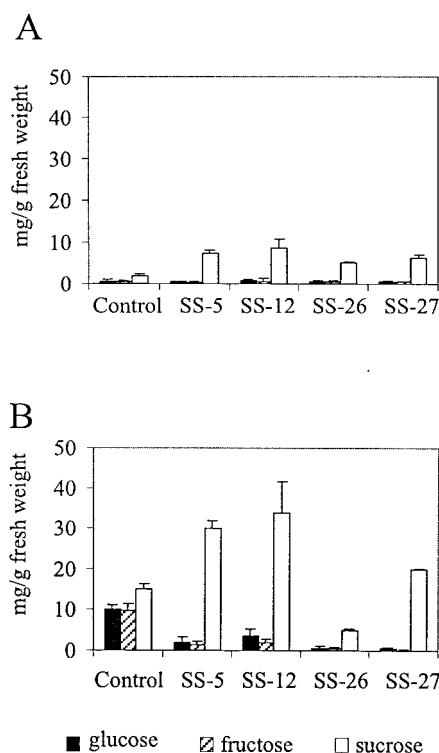


Figure 7. Influence of antisense inhibition of sucrose synthase on the sucrose, glucose, and fructose contents of source leaves (A) and tap roots (B) of transgenic carrot plants. Leaves and tap roots were harvested from 3-month old antisense plants and soluble sugars were extracted and measured as described in Materials and methods. Values are given as mg per gram fresh weight and represent the mean \pm SD from analyses of 3–6 plants.

had the lowest sucrose synthase activity, also had the lowest UDP-glucose level.

In order to test whether reduction of sucrose synthase activity in carrot tap roots also had an influence on their starch and cellulose content, the levels of the two glucans were determined in control and antisense plants. Mature leaves of antisense plants had up to threefold higher starch levels than control leaves (Figure 9A), whereas in antisense tap roots there was a reduction to ca. 38% of the control (Figure 9B). In cross-sections of antisense tap roots stained with iodine, the typical radial pattern of starch deposition (Sturm *et al.*, 1999) was found but iodine staining was less dense than that of control roots (data not shown).

The cellulose content of mature leaves of antisense plants was not different from that of control leaves (Figure 10A), whereas in tap roots it was reduced by ca. 37% of the control (Figure 10B). Considering total amounts of starch or cellulose per tap root, the production and accumulation of biomass in the su-

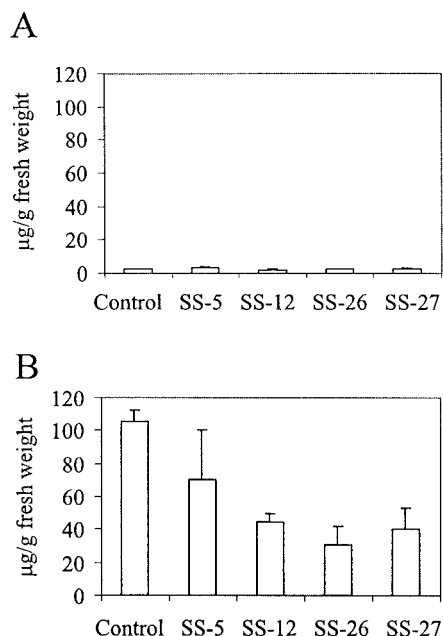


Figure 8. Influence of antisense inhibition of sucrose synthase on UDP-glucose content of source leaves (A) and tap roots (B) of transgenic carrot plants. Leaves and tap roots were harvested from 3-month old antisense plants and soluble sugars were extracted. UDP-glucose was measured as described in Materials and methods. Values are given as micrograms of nucleotide phosphate sugar per gram fresh weight of tissue and represent the mean \pm SD from analyses of 3–6 plants.

crose synthase antisense plants was markedly reduced (Figures 9C and 10C).

To test whether reduction of sucrose synthase activity was compensated by an increase of invertase activity, cell wall invertase, vacuolar invertase, and neutral/alkaline invertase were measured in leaves and tap roots of antisense plants but no major change was found (data not shown). Furthermore, no significant changes in the activities of hexokinase and fructokinase were detected (data not shown).

Discussion

Reduction of sucrose synthase activity in storage organs of different plant species gives rise to different phenotypes

Three genetically modified crop plant species with clearly reduced sucrose synthase activity in their storage organs have been well characterized: endosperms of the *shrunk-1* mutant of maize (Chourey and Nelson, 1976), in which a structural gene for sucrose

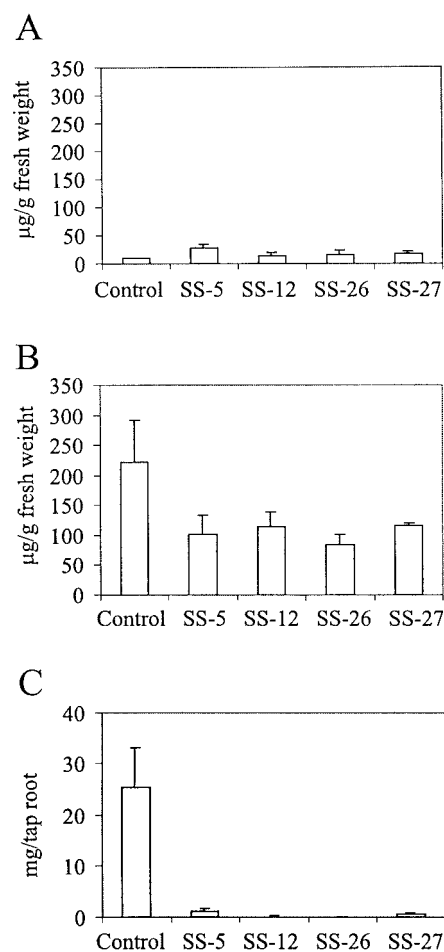


Figure 9. Influence of antisense inhibition of sucrose synthase on starch content of source leaves (A) and tap roots (B and C) of transgenic carrot plants. Leaves and tap roots were harvested from 3-month old antisense plants and starch was extracted and measured as described in Materials and methods. Values represent the mean \pm SD of results from analyses of 3–6 plants.

synthase is altered, tubers of potato (Zrenner *et al.*, 1995) and tap roots of carrot (this publication) which express antisense mRNA for the enzyme. The residual sucrose synthase activity in all three crops was below 20% of the controls (Table 1); however, the plants had markedly different phenotypes. Whereas the antisense potato plants were indistinguishable from control plants (Zrenner *et al.*, 1995), antisense carrot plants were much smaller. These findings suggests distinct differences in the importance of sucrose synthase in different plant species.

Sucrose utilization in the storage organs of genetically modified maize, potato and carrot was reduced and there was a two- to fourfold increase in sucrose

Table 1. Comparison of three different crop plant storage organs with reduced sucrose synthase activity.

	Endosperms (22 d.p.a.*) of the maize mutant <i>shrunk-1</i>	Tubers of potato (antisense)	Tap roots of carrot (antisense)
Sucrose synthase activity	↓ to < 10%	↓ to 4% (S-112) ↓ to 8% (S-129)	↓ to ca. 18%
Sucrose	↑ 4×	↑ < 2×	↑ 2×
Glucose/fructose	↑ 2.4×	↑ ^g 93×, ↑ ^f 41× (S-129) ↑ ^g 277×, ↑ ^f 158× (S-129)	↓ to < 20%
Starch	↓ 62%	↓ to 34% (S-112) ↓ to 63% (S-129)	↓ to ca. 26%
Phenotype of the storage organs	Shrunk seeds, collapsed endosperm, markedly reduced dry weight	Number and fresh weight not changed, markedly reduced dry weight (< 50%)	Notably smaller but normal-looking, markedly reduced dry weight

*Days after anthesis (after controlled pollination); ^gglucose; ^ffructose.

levels (Table 1). In contrast, the hexose levels differed markedly between species. The levels of reducing sugars were increased more than twofold in developing endosperms (Chourey and Nelson, 1976) and up to 200-fold in tubers (Zrenner *et al.*, 1995), whereas in carrot tap roots, their levels were reduced to below 20% of control roots. The elevated sugar levels in maize and potato may have triggered an influx of water into their storage organs and, therefore, during development they were phenotypically indistinguishable from the control plants. Only when these organs matured, dried and shrank were their dry weights notably reduced. In contrast, carrot tap roots with reduced hexose levels remained small and water uptake did not compensate for the reduction in storage organ dry weight.

The differences in hexose levels were probably due to differences in invertase activities, based on the presence or absence of invertase gene regulation by sugars. In maize, genes for acid invertases such as *lvr2* were notably up-regulated in root tips by increasing hexose or sucrose concentrations (Xu *et al.*, 1996). Although such experiments have not been carried out in potato, the activity of soluble acid invertase was found to be markedly increased in tubers of the antisense plants (Zrenner *et al.*, 1995). In contrast, expression of carrot acid invertase genes appears not to be sugar-regulated (A. Sturm, unpublished results). A possible explanation is that tap roots accumulate high concentrations of sugars. Short-term physiological changes would only

lead to minor sugar concentration changes not large enough to alter regulation of gene expression.

Antisense repression of sucrose synthase affects the size of carrot plants and the biosynthesis of cellulose and starch

The sucrose synthase levels in carrot tap roots from independent antisense plant lines showed different degrees of residual enzyme activity, and there was a close correlation between plant size and sucrose synthase activity. The general root architecture was preserved but the mature storage parenchyma cells were larger than those of control tap roots. Thus, down-regulation of sucrose synthase activity was paralleled by reduction in cell number and not cell size.

Tap roots of antisense carrot plants had lower levels of UDP-glucose, correlating well with residual sucrose synthase activity. UDP-glucose is the direct precursor of cellulose (β -glucan) (Carpita and Vergara, 1998) and, indeed, the antisense tap roots had less cellulose. Cellulose is a component of the plant cell wall, which confers strength and shape to cells. Long cellulose fibrils are spooled around each cell in several strata, interlaced by complex polysaccharides and structural proteins. During cell expansion, the interlacing molecules are cleaved enzymatically, and the internal osmotic pressure pushes the fibrillar components apart (Carpita and Gibeau, 1993). A reduction in cellulose content will probably weaken the cell wall and lead to larger, rounder cells. This hypothesis is well supported by a recent molecular analysis of

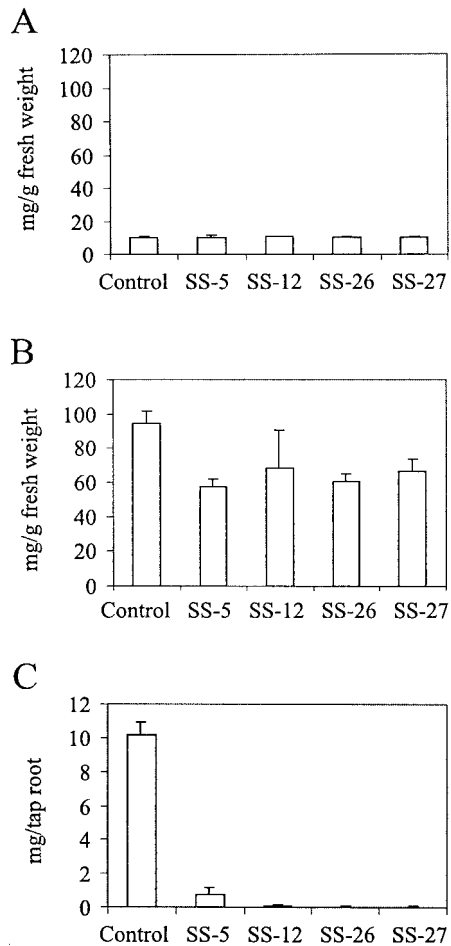


Figure 10. Influence of antisense inhibition of sucrose synthase on cellulose content source leaves (A) and tap roots (B and C) of transgenic carrot plants. Leaves and tap roots were harvested from 3-month old antisense plants and cellulose was extracted and measured as described in Materials and methods. Values represent the mean \pm SD from analyses of 3–6 plants.

the *rsw1* mutant of *Arabidopsis* with radially swollen roots (Aroli *et al.* 1998). In *rsw1*, a single amino acid sequence change in the catalytic subunit of cellulose synthase was found, which leads to a reduction in cellulose content and, concomitantly, to cell swelling.

After conversion into ADP-glucose, UDP-glucose is also the precursor of starch (α -glucan) (Smith *et al.*, 1995). Thus, antisense tap roots with reduced UDP-glucose levels also had reduced levels of starch. Biosynthesis of cellulose and starch were equally affected, suggesting that one sucrose synthase isoform is critical for the synthesis of both polyglucans. This is in contrast to the situation in maize endosperm, in which a functional dichotomy of two sucrose synthase

isoforms (SH1 and SUS1) was found (Chourey *et al.*, 1998).

Sucrose synthase controls growth, whereas acid invertases are critical for sucrose partitioning

In a recent publication (Tang *et al.*, 1999), transgenic carrot plants with reduced levels of two different acid invertase isoforms were described. Thus, for the first time it is now possible to compare the effect of genetically reduced activities of different sucrose-cleaving enzymes in the same species (Table 2A and B) and to speculate about their functions.

The sucrose-cleaving enzymes cell wall invertase, vacuolar invertase and sucrose synthase are located in different subcellular compartments, where they feed sucrose into numerous biochemical pathways. The genes for the three enzymes are differentially regulated and transcripts were found at different times and places during carrot development (Sturm *et al.*, 1995). Furthermore, their expression responds to several biotic and abiotic stimuli (Sturm and Chrispeels, 1990; Sturm *et al.*, 1999). The independent spatial, temporal and environmental regulation of these genes may allow efficient orchestration of carbohydrate metabolism in response to changing physiological conditions (Sturm, 1996), as well as a means to control sucrose partitioning and plant development (Sturm and Tang, 1999; Tang *et al.*, 1999).

Activities of cell wall invertase, vacuolar invertase, or sucrose synthase were reduced in tap roots but not in mature leaves of the three types of antisense carrot plants (Table 2A and B). This correlates well with the high activity of the CaMV 35S promoter found in carrot tap roots and the low activity in carrot source leaves (Hardegger and Sturm, 1998). However, reduction of the activities in tap roots had profound effects on the levels of soluble sugars in leaves (Table 2A). Most notably, leaves accumulated sucrose to elevated levels, possibly as a consequence of a reduction in either sucrose partitioning between source leaves and tap roots of the invertase antisense plants (Tang *et al.*, 1999) or in sucrose utilization in tap roots of sucrose synthase antisense plants. Because elevated sugar levels are not well tolerated in leaves of plants (van Schaewen *et al.*, 1990; Riesmeier *et al.*, 1994), sucrose was partially converted into starch (Table 2A).

The invertase antisense carrot plants (Tang *et al.*, 1999) expressing antisense mRNA for either cell wall invertase or vacuolar invertase, had a bushy appearance with additional but normal-size leaves. In com-

Table 2. Analysis of mature leaves and roots of transgenic carrot plants expressing antisense mRNA for different sucrose-cleaving enzymes.

	Cell wall invertase	Vacuolar invertase	Sucrose synthase
A. Mature leaves			
Enzyme activity	slightly reduced	not changed	not changed
Sucrose	↑ 2×	↑ 2×	↑ 4×
Glucose/fructose	not changed	not changed	not changed
Starch	↑ 5×	↑ 5×	↑ 3×
Phenotype	many more leaves, regular size	more leaves, regular size	normal amount, much smaller
B. Roots			
Enzyme activity	↓ by 70%	↓ by 81%	↓ by 82%
Sucrose	↓ by 50%	↓ by 30%	↑ 2×
Glucose/fructose	↓ by 75%	↓ by 75%	↓ by 81%
Starch	↓ by 70%	↓ by 70%	↓ by 62%
Phenotype	no tap roots	small tap roots	small tap roots

parison, leaves of the sucrose synthase antisense plants were markedly smaller than wild type with no increase in number (Table 2A). In contrast, the tap root size for all three plant types was notably reduced (Table 2B). There was a dramatic shift of the dry weight leaf-to-root ratios of the invertase antisense plants in favour of leaves (Tang *et al.*, 1999), whereas the majority of the sucrose synthase antisense plant lines showed no alteration in biomass distribution between leaves and roots. These results strongly suggest that sucrose synthase in carrot is a major determinant of plant growth. In tap roots, the enzyme appears to be the main sucrose-cleaving activity, feeding sucrose into metabolism. Down-regulation of its activity substantially reduced the availability of carbon. As a consequence, dry matter production, and thereby the size of plants, was markedly reduced. In contrast, Tang *et al.* (1999) showed that acid invertases in carrot are critical for sucrose partitioning between source leaves and tap roots.

In antisense plants of line SS-26 with the most dramatic reduction of sucrose synthase activity (>99%), the leaf-to-root ratio was slightly shifted in favour of leaves. Whether this was due to a direct effect on sucrose partition or, for example, changes in plant architecture due to a lack of precursors such as UDP-glucose for development and growth has to await further analysis.

Acknowledgements

We thank our colleagues Thomas Boller and Patrick King for critical reading of the manuscript and helpful discussion. We are also grateful to Marcel Lüscher (University of Basel, Switzerland) for excellent technical assistance in the analysis of soluble sugars and Prem Chourey (University of Gainesville, Florida) for the antiserum against sucrose synthase from maize.

References

- Arioli, T., Peng, L., Betzner, A.S., Burn, J., Wittke, W., Herth, W., Camilleri, C., Höfte, H., Plazinski, J., Birch, R., Cork, A., Glover, J., Redmond, J. and Williamson, R.E. 1998. Molecular analysis of cellulose biosynthesis in *Arabidopsis*. *Science* 279: 717–721.
- Avigad, G. 1964. Sucrose-uridine diphosphate glucosyltransferase from Jerusalem artichoke tubers. *J. Biol. Chem.* 239: 3613–3618.
- Avigad, G. 1982. Sucrose and other disaccharides. In: F.A. Loewus and W. Tanner (Eds.), *Encyclopedia of Plant Physiology* 13A, Springer-Verlag, Berlin, pp. 217–347.
- Carpita, N. and Gibeaut, D.M. 1993. Structural models of primary cell walls in flowering plants: consistency of molecular structure with the physical properties of walls during growth. *Plant J.* 3: 1–30.
- Carpita, N. and Vergara, C. 1998. A recipe for cellulose. *Science* 279: 672–673.
- Chourey, P.S. and Nelson, O.E. 1976. The enzymatic deficiency conditioned by the *shrunk-1* mutation in maize. *Biochem. Genet.* 14: 1041–1055.
- Chourey, P.S., Latham, M.D. and Still, P.E. 1986. Expression of two sucrose synthetase genes in endosperm and seedling cells of maize: evidence of tissue specific polymerization of promoters. *Mol. Gen. Genet.* 203: 251–255.

- Chourey, P.S., Taliercio, E.W., Carlson, S.J. and Ruan, Y.-L. 1998. Genetic evidence that two isozymes of sucrose synthase present in developing maize endosperm are critical, one for cell wall integrity and the other for starch biosynthesis. *Mol. Gen. Genet.* 259: 88–96.
- Copeland, L. 1990. Enzymes of sucrose metabolism. *Meth. Plant Biochem.* 3: 73–85.
- Crespi, M.D., Zabaleta, E.J., Pontis, H.G. and Salerno, G.L. 1991. Sucrose synthase during cold acclimation in wheat. *Plant Physiol.* 96: 887–891.
- Daie, J. 1984. Characterization of sugar transport in storage tissue of carrot. *J. Am. Soc. Hort. Sci.* 109: 718–722.
- Esau, K. 1940. Developmental anatomy of the fleshy storage organ of *Daucus carota*. *Hilgardia* 12: 175–226.
- Fu, H. and Park, W.D. 1995. Sink- and vascular-associated sucrose synthase functions are encoded by different gene classes in potato. *Plant Cell.* 7: 1369–1385.
- Gifford, R.M. and Evans, L.T. 1981. Photosynthesis, carbon partitioning, and yield. *Annu. Rev. Plant Physiol.* 32: 485–509.
- Hardegger, M. and Sturm, A. 1998. Transformation and regeneration of carrot (*Daucus carota* L.) *Mol. Breed.* 4: 119–127.
- Ho, L.C. 1988. Metabolism and compartmentation of imported sugars in sink organs in relation to sink strength. *Annu. Rev. Plant Physiol. Plant Mol. Biol.* 39: 355–378.
- Hoekema, A., Hirsch, P.R., Hooykaas, P.J.J. and Schilperoort, R.A. 1983. A binary plant vector strategy based on separation of the vir- and T-region of *Agrobacterium tumefaciens* Ti plasmid. *Nature* 303: 179–180.
- Hofgen, R. and Willmitzer, L. 1988. Storage of competent cells for *Agrobacterium* transformation. *Nucl. Acids Res.* 16: 9877.
- Keller, F. 1988. A large-scale isolation of vacuoles from protoplasts of mature carrot tap roots. *J. Plant Physiol.* 132: 199–203.
- Kleczkowski, L.A. 1994. Glucose activation and metabolism through UDP-glucose pyrophosphorylase in plants. *Phytochemistry* 37: 1507–1515.
- Kruger, J.N. 1990. Carbohydrate synthesis and degradation. In: D.T. Dennis and D.H. Turpin (Eds.), *Plant Physiology, Biochemistry, and Molecular Biology*, Longman Scientific & Technical Publishers, Harlow, UK, pp. 59–76.
- Maraña, C., García-Olmedo, F. and Carbonero, P. 1990. Differential expression of two types of sucrose synthase encoding genes in wheat in response to anaerobiosis, cold shock and light. *Gene* 88: 167–172.
- Morell, M. and Copeland, L. 1985. Sucrose synthase of soybean nodules. *Plant Physiol.* 78: 149–154.
- Murashige, T. and Skoog, F. 1962. A revised medium for rapid growth and bioassays with *Camellia japonica* pollen. *Phytochemistry* 19: 205–209.
- Murray, M.G. and Thompson, W.F. 1980. Rapid isolation of high molecular weight plant DNA. *Nucl. Acids Res.* 8: 4321–4325.
- Peterson, C.E. and Simon, P.W. 1986. Carrot breeding. In: M.J. Bassett (Ed.), *Breeding Vegetable Crops*, AVI, Westport, CT, pp. 321–356.
- Prescott, A. and Martin, C. 1987. A rapid method for the quantitative assessment of levels of specific mRNAs in plants. *Plant Mol. Biol. Rep.* 4: 219–224.
- Quick, W.P. and Schaffer, A.A. 1996. Sucrose metabolism in sources and sinks. In: E. Zamski and A.A. Schaffer (Eds.), *Photoassimilate Distribution in Plants and Crops*, Marcel Dekker, New York/Basel/Hong Kong, pp. 115–156.
- Ramloch-Lorenz, K., Knudsen, S. and Sturm, A. 1993. Molecular characterization of the gene for carrot cell wall β -fructosidase. *Plant J.* 4: 545–554.
- Renz, A. and Stitt, M. 1993. Substrate specificity and product inhibition of different forms of fructokinases and hexokinases in developing potato tubers. *Planta* 190: 166–174.
- Riesmeier, J.W., Willmitzer, L. and Frommer, W.B. 1994. Evidence for an essential role of the sucrose transporter in phloem loading and assimilate partitioning. *EMBO J.* 13: 1–7.
- Salanoubat, M. and Belliard, G. 1989. The steady-state level of potato sucrose synthase mRNA is dependent on wounding, anaerobiosis and sucrose concentration. *Gene* 84: 181–185.
- Sambrook, J., Fritsch, E.F. and Maniatis, T. 1989. *Molecular Cloning: A Laboratory Manual*, 2nd ed., Cold Spring Harbor Laboratory, Cold Spring Harbor, NY.
- Schmidt-Puchta, W., Kütemeier, G., Günther, I., Haas, B. and Sängler, H.L. 1989. Cloning and sequence analysis of the 18S ribosomal RNA gene of tomato and a secondary structure model for the 18S rRNA of angiosperms. *Mol. Gen. Genet.* 219: 17–25.
- Šebkova, V., Unger, C., Hardegger, M. and Sturm, A. 1995. Biochemical, physiological and molecular characterization of sucrose synthase from *Daucus carota*. *Plant Physiol.* 108: 75–83.
- Smith, A.M., Denyer, K. and Martin, C.R. 1995. What controls the amount and structure of starch in storage organs? *Plant Physiol.* 107: 673–677.
- Somogyi, M. 1952. Notes on sugar determination. *J. Biol. Chem.* 195: 19–23.
- Stitt, M. 1989. Metabolite levels in specific cells and subcellular compartments of plant leaves. *Meth. Enzymol.* 174: 518–555.
- Stitt, M. and Sonnewald, U. 1995. Regulation of metabolism in transgenic plants. *Annu. Rev. Plant Physiol. Plant Mol. Biol.* 46: 341–368.
- Sturm, A. 1996. Molecular characterization and functional analysis of sucrose-cleaving enzymes in carrot (*Daucus carota* L.). *J. Exp. Bot.* 47: 1187–1192.
- Sturm, A. 1999. Invertases: primary structures, functions, and roles in plant development and sucrose partitioning. *Plant Physiol.* 121: 1–7.
- Sturm, A. and Chrispeels, M.J. 1990. cDNA cloning of carrot extracellular β -fructosidase and its expression in response to wounding and bacterial infection. *Plant Cell* 2: 1107–1119.
- Sturm, A. and Tang, G.-Q. 1999. The sucrose-cleaving enzymes of plants are crucial for development, growth, and carbon partitioning. *Trends Plant Sci.* 4: 401–403.
- Sturm, A., Šebková, V., Lorenz, K., Hardegger, M., Lienhard, S. and Unger, C. 1995. Development- and organ-specific expression of the genes for sucrose synthase and three isoenzymes of acid β -fructofuranosidase in carrot. *Planta* 195: 601–610.
- Sturm, A., Lienhard, S., Schatt, S. and Hardegger, M. 1999. Tissue-specific expression of two genes for sucrose synthase in carrot (*Daucus carota* L.). *Plant Mol. Biol.* 39: 349–360.
- Tang, G.-Q., Lüscher, M. and Sturm, A. 1999. Antisense repression of vacuolar and cell wall invertase in transgenic carrot alters early plant development and sucrose partitioning. *Plant Cell* 11: 177–189.
- Updegraff, D.M. 1969. Semi-micro determination of cellulose in biological materials. *Anal. Biochem.* 32: 420–424.
- von Schaewen, A., Stitt, M., Schmidt, R., Sonnewald, U. and Willmitzer, L. 1990. Expression of a yeast-derived invertase in the cell wall of tobacco and *Arabidopsis* plants leads to accumulation of carbohydrate and inhibition of photosynthesis and strongly influences growth and phenotype of transgenic tobacco plants. *EMBO J.* 9: 3033–3044.
- Wang, F., Sanz, A., Brenner, M.L. and Smith, A. 1993. Sucrose synthase, starch accumulation, and tomato fruit sink strength. *Plant Physiol.* 101: 321–327.

- Weber, H., Buchner, P., Borisjuk, L. and Wobus, U. 1996. Sucrose metabolism during cotyledon development of *Vicia faba* L. is controlled by the concerted action of both sucrose-phosphate synthase and sucrose synthase: expression patterns, metabolic regulation and implications for seed development. *Plant J.* 9: 841–850.
- Witt, H.-J. 1989. Activities of enzymes involved in sucrose and starch metabolism in *Riella helicophylla* (Bory et. Mont.) Mont. during differentiation. *J. Plant Physiol.* 135: 99–104.
- Xu, J., Avigne, W.T., McCarty, D.R. and Koch, K. 1996. A similar dichotomy of sugar modulation and developmental expression affects both paths of sucrose metabolism: evidence from a maize invertase gene family. *Plant Cell* 8: 1209–1220.
- Zrenner, R., Salanoubat, M., Willmitzer, L. and Sonnewald, U. 1995. Evidence of the crucial role of sucrose synthase for sink strength using transgenic potato plants (*Solanum tuberosum* L.). *Plant J.* 7: 97–107.