

Childs Nerv Syst (2011) 27:923–931
DOI 10.1007/s00381-010-1357-x

ORIGINAL PAPER

Long-term sequelae after acquired pediatric hemorrhagic cerebellar lesions

Kevin Wingeier · Sandra Bigi · Marwan El-Koussy ·
Theda Heinks-Maldonado · Eugen Boltshauser ·
Maja Steinlin

Received: 23 August 2010 / Accepted: 30 November 2010 / Published online: 29 December 2010
© Springer-Verlag 2010

Abstract

Purpose The aim of the present study was to assess cognitive, affective, and motor long-term sequelae after acquired focal pediatric cerebellar lesions.

Methods Eight patients with a history of isolated acquired hemorrhagic cerebellar lesions before the age of 13 participated in this study. All participants underwent a neurologic examination, including the Zurich Neuromotor Assessment (ZNA) and the International Cooperative Ataxia Rating Scale (ICARS). Cognitive functions have been evaluated with a general cognitive assessment and an extensive neuropsychological battery. Furthermore, patients and parents filled in questionnaires about quality of life and possible behavioral or emotional problems.

Results The results revealed that all patients exhibited motor problems (ZNA). Most participants had further restricted oculomotor movements (ICARS). Age at injury and the full scale IQ were significantly positively correlated (Pearson

correlation 0.779; $p=0.023$). Conversely, no overall neuropsychological profile could be identified except for marginally reduced reaction times and susceptibility to interference. In addition, borderline results in semantic and phonemic word fluency tasks were apparent. A dysexecutive syndrome was diagnosed in one patient. However, verbal performance and reading abilities were non-pathologic in all participants. The patients reported having a good quality of life without major physical restrictions.

Conclusions Emotional disturbances and the presence of a mild cerebellar cognitive affective syndrome (as frequently described in adult patients) could only be confirmed in adolescents with vermis lesions. Nevertheless, in laboratory conditions, neuropsychological impairments were present in all patients. Heterogeneity of age at injury and exact lesion site may have led to interpersonal differences in neuropsychological outcome.

Keywords Cerebellum · Neuropsychology · Child · Cognition · Quality of life · Hemorrhage

K. Wingeier (✉) · S. Bigi · T. Heinks-Maldonado · M. Steinlin
Department of Pediatric Neurology (J212),
University Children's Hospital, Inselspital,
3010 Bern, Switzerland
e-mail: kevin.wingeier@gmail.com
URL: www.insel.ch

K. Wingeier
Division of Experimental Psychology and Neuropsychology,
University of Bern,
Bern, Switzerland

M. El-Koussy
Diagnostic and Interventional Neuroradiology,
University Hospital, Inselspital,
Bern, Switzerland

E. Boltshauser
Pediatric Neurology, University Children's Hospital,
Zurich, Switzerland

Introduction

Since the middle of the last century, the cerebellum has been found to be associated with the coordination and timing of actions, the control and modulation of movements, and the adjustment of posture [1]. At the end of the 1980s, reports suggesting a possible contribution of the cerebellum to higher-level cognition [2, 3]. In the last two decades, an increasing number of studies have described cognitive impairments following damage to the cerebellum. Some reports have linked cerebellar lesions to difficulties in various cognitive domains, e.g., language and speech problems [4–8], visuo-spatial impairments [8–10], execu-

tive dysfunctions and (verbal) working memory problems [11–13], learning disabilities [8, 10, 12], as well as impaired sequencing in cognitive domains [14, 15]. In 1998, Schmahmann and Sherman tried to combine some of the described symptoms under the term *cerebellar cognitive affective syndrome* [16]. This syndrome represents a neuro-behavioral phenomenon that includes various neuropsychological deficits combined with behavioral/affective symptoms [16]. Symptom-lesion mapping, neuroanatomical and functional neuroimaging studies provide further indications that the cerebellum is involved in cognitive functioning [17–24]. Some studies have even found connections between lesions of the posterior lateral cerebellar hemispheres and higher order cognitive problems, whereas injuries involving the vermis of the cerebellum are accompanied by dysregulation of affect [25–28].

However, the extent of influence of the cerebellum on developing cognitive functions is still insufficiently investigated. Despite the fact that neurocognitive problems after acquired pediatric cerebellar lesions have been described, reports about the emergence of cerebellar cognitive affective syndrome in this population are scarce [28–31]. Nevertheless, many authors stress the importance of an intact cerebellum for the development of neuropsychological functions [24, 32–34]. Thus far, it is known that children who suffer from congenital vermal aplasia (Joubert–Boltshauser syndrome) have severe cognitive deficits [35]. Other reports have linked an underdevelopment of the cerebellum in preterm babies with potential cognitive problems later in life [36–38]. The majority of pediatric studies focusing on cognition after acquired cerebellar lesions have mainly recruited patients suffering from oncological diseases. Neoplastic pediatric cerebellar lesions have repeatedly been found to be associated with different neuropsychological problems [24, 28, 29, 32, 39].

To the best of our knowledge, no systematic evaluation of long-term sequelae after *acquired non-neoplastic cerebellar lesions* during development has yet been reported. Therefore, in the present study, we focus primarily on the long-term outcomes for neuropsychological functions, quality of life, and possible behavioral/emotional problems in a circumscribed patient group with a history of acquired non-neoplastic cerebellar lesion during childhood.

Methods

After approval by the Cantonal Ethics Committees of Bern and Zurich, Switzerland, databases of the University Children's Hospitals in Bern and Zurich and the Swiss Neuropaediatric Stroke Registry were systematically searched for former patients with a history of acquired isolated ischemic or hemorrhagic cerebellar lesion under

the age of 16 in the past 10 years [40]. Patients younger than 6 years at the time of examination were excluded due to the limited number of neuropsychological tests available for this age group and missing normative data of healthy children. Patients with psychiatric disorders prior to injury, with neurological or systemic disorders potentially interfering with developing cognitive functions and patients with oncological problems were excluded as well. Finally, eight patients qualified for participation. These patients had all suffered from a hemorrhagic cerebellar stroke due to an arterial venous malformation (AVM) or a cerebellar cavernoma (see Table 1). They were thoroughly informed about the aim of the study. Written informed consent was obtained from all participants and their parents.

Neuroimaging

All participating families granted the research team full access to the children's medical documents, including CT, MRI scans, or angiography images. All initial and follow-up neuroimaging data were reviewed. The cerebellum was examined in regard to the affected vascular territory, the exact lesion site in the cerebellar hemisphere, and potential lesions in the vermis.

Neurological and neuropsychological assessment

The neurological and neuropsychological assessments were done at least 12 months post-injury. The neurological examination involved a complete Zurich Neuromotor Assessment battery (ZNA) and the International Cooperative Ataxia Rating Scale (ICARS) [41, 42]. Individual neuropsychological assessment was conducted in multiple sessions according to a standardized format and in the same order for all participants. To gain the patient's neuropsychological profiles, the following test materials were chosen: Wechsler Intelligence Scale for Children, 4th (WISC-IV) Edition, or Wechsler Intelligence Scale for Adults, 3rd Edition (WAIS-III), Rey Osterrieth Complex Figure (Rey Figure), Regensburger Word Fluency Test (RWT), a clinical screening of reading abilities (as no reading test covered the whole age range in our patient group - different reading test have been used), Wisconsin Card Sorting Test (WCST), Rey Auditory Verbal Learning Test (RAVLT), Rey Visual Design Learning Test (RVDLT), Corsi Block Tapping Test (CORSI), 5-point Test, Delis–Kaplan Executive Function System (D-KEFS), and the subtests for alertness, selective attention, divided attention, incompatibility, and working memory from the of the Test Battery of Attentional Performance (TAP). All of these tests are frequently used in clinical trials and in scientific research - are age-scaled - and the test manuals provide normative data of healthy children.

Table 1 Characteristics of the patient group

Patient nos.	1	2	3	4	5	6	7	8
Age test (years)	21	17	19	17	15	12	13	19
Age at injury (years)/gender	12/female	13/female	12/female	9/male	11/female	11/female	10/male	13/female
Type of lesion	AVM	Acute bleeding in upper vermis ^b	AVM	AVM	AVM	Cavernoma	AVM	Possible AVM ^c
Artery or vessel affected	PICA right, Arteria cerebelli superior right		PICA left, Arteria cerebelli superior right	Arteria cerebelli superior right	Arteria cerebelli superior right	Cavernoma	Arteria cerebelli superior left	Possible arteria cerebelli superior ^c
Vermis affected	No	Yes	No	No	No	Yes	Yes	Yes
Cerebellar hemispheres affected	Right	No	Right	Right>left	Right	Left	Right>left	No
Surgery	Embolization and surgical resection	No	Embolization	Embolization	Embolization	Surgical resection	Surgical resection	Surgical resection
Hydrocephalus at presentation	Yes (minimal) ^a	Yes (minimal) ^a	No	No	No	No	Yes (minimal) ^a	Yes (minimal) ^a

^a Minimal hydrocephalus was defined as mild enlargement of temporal horns

^b Bleeding in upper vermis, no surgical treatment, angiography without revealing vascular abnormalities

^c Initial investigation with CT only, afterwards resection of hematoma as emergency. In initial CT, etiology of bleeding not too defined, postoperative MRI and MRA without revealing pathology

Questionnaires

The patients and their parents were further asked to fill in questionnaires about the patient’s physical well-being, emotional health, and possible behavioral problems, as well as the patient’s present quality of life. To address these issues, the following questionnaires have been chosen: Child Behaviour Check List (CBCL), Youth Self Report (YSR), the Marburger inventory to establish the quality of life in children and adolescents (ILK-MARSYS), and the Kidscreen-52 long-version questionnaire.

Results

The patients’ characteristics, as well as the etiology of the cerebellar injury, are described in Table 1. The eight patients who were willing to participate were between the ages of 11 and 21 (mean age 16 years and 6 months; SD 3 years and 2 months). The age at the time of manifestation of the cerebellar injury was between 9 and 13 years of age, with a mean age of 11 years. In five participants, the right cerebellar hemisphere has been injured; in two of those patients, the left side was mildly affected, too. A single patient had an isolated lesion on the left cerebellar hemisphere. In 50% of the patient group, the vermis of the cerebellum was affected. Two of those patients had an isolated vermis injury with no involvement of the cerebellar hemispheres. Minimal hydrocephalus (defined as mild enlargement of temporal horns) was present in four patients at acute presentation. Figures 1 and 2, which show MR images of two selected patients, provide a clear picture of the exact lesion sites and indicate the medical interventions needed in these cases.

Neurological and neuropsychological assessment

Detailed results of the neurological assessments are shown in Table 2. The results revealed the presence of mainly unspecific motor problems (ZNA) and slight symptoms of ataxia (ICARS). Every single patient had results in at least one subtest of the ZNA that were more than one standard deviation below the age-scaled norm. Seven patients even had abnormal results in three or more subtests of the ZNA. The subscales for adaptive fine motor tasks (mean -3.4; SD 3.3) and for adaptive gross motor tasks (mean -2.7; SD 1.6) were most sensitive. In contrast, motor speed - assessed with the D-KEFS - was average or even above average in all patients (mean 12; SD 1). The ICARS revealed only minor and quite heterogeneous signs of ataxia. Most abnormal results were obtained in the subscale oculomotor movements.

General intelligence assessments of the patient group resulted in a mean full scale IQ (FSIQ) of 103 (SD 11, range 83–118). Only one participant had an FSIQ below 85. Mean

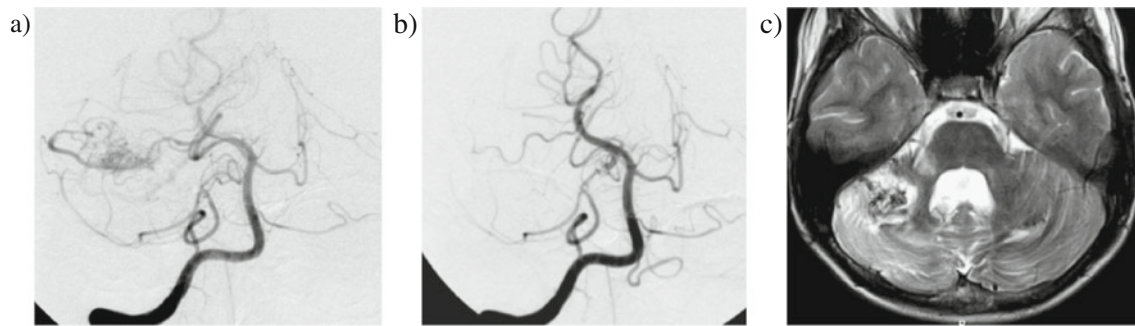


Fig. 1 MR images: Arteriovenous malformation (AVM) in the posterior fossa of patient nos. 4. Digital subtraction angiography, right vertebral artery injection. **a** Main feeder was the right superior cerebellar artery. **b** Successful selective embolization. The AVM is no

longer opacified. In the **c** T2-weighted MRI image, notice the parenchymal loss and dark hemosiderin deposits in the right and to a lesser extent in the left cerebellar hemispheres as well as in the right middle cerebellar peduncle

verbal IQ (VIQ) measured by WAIS-III was 106, whereas the mean performance IQ (PIQ) was 103, with no significant difference between VIQ and PIQ. Age at injury and the FSIQ were significantly positively correlated (Pearson correlation 0.779; $p=0.023$). Thus, young age at the time of injury is associated with lower general cognitive functioning. No significant correlations were found between time since injury (in years) and FSIQ (Pearson correlation 0.027; $p=0.950$). A selected overview of the neuropsychological results is illustrated in Table 3. Prolonged reaction time was revealed in the TAP subtests for alertness and for selective attention, where up to 50% of study sample had pathological results. In the TAP subtest for incompatibility (designed to measure a person's susceptibility to interference), 50% of the participants showed reaction times of more than one standard deviation below the mean of the norm population (percentile <16). Clinically, no patient showed problems reading aloud (judged by accuracy and speed). Grammar and spelling were not impaired. No confabulations, perseverations, or dysarthric speech could be identified. However, four patients had

pathological results in either the semantic or the phonemic verbal fluency task.

On the individual level, some results are worth highlighting in detail. Patient nos. 4 suffering from a superior arterial cerebellar malformation with lesions on the right and left cerebellar hemispheres and a diagnosis of a dysexecutive syndrome had severe deficits in the WAIS-III subtest on picture arrangement (more than two standard deviations below the norm), recalling the Rey Figure, all verbal fluency tasks and the Wisconsin Card Sorting Test (scoring below the 9th percentile on all outcome measures). Patient nos. 6, who had a lesion on the left cerebellar hemisphere after a cavernoma, showed insecurities in several memory tasks (e.g., recall of the Rey Figure, CORSI, and RAVLT). Similar problems were discovered in patient nos. 7, who had lesions on both cerebellar hemispheres (right side lesion was bigger than the one on the left). This patient had severe (working) memory problems, e.g., TAP subtest for working memory, RAVLT, RVDLT, and recalling the Rey Figure.

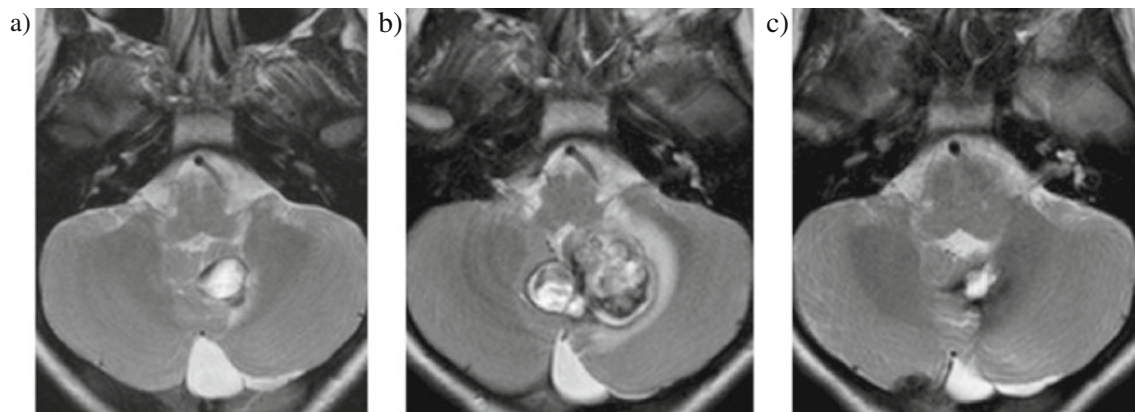


Fig. 2 MR images: Cavernoma of the cerebellum affecting mostly the vermis and the left cerebellar hemisphere in patient nos. 6. The **a** baseline of T2-weighted MRI shows the characteristic of *dark ring around the lesion* (hemosiderin and/or calcification). The follow-up scan 5 months later **b** revealed significant progression in size and change in signal

characteristics due to repetitive intra-lesional bleeding with progressive compression of the fourth ventricle. The cavernous angioma had to be operated upon with a good postoperative result, **c** the MRI 2 months after surgery showing regression of the mass effect on the fourth ventricle and some hemosiderin residues at the operative bed

Table 2 Results of the neurological investigations carried out with all eight patients compared to norm

Functions	Test materials	Mean (SD) norm data	Mean (SD) study simple	Patient nos.							
				1	2	3	4	5	6	7	8
Motor functions	D-KEFS (motor speed)	10 (3)	12	12	13	13	13	12	13	10	12
	Zurich Neuromotor Assessment (pure motor)	0 (1)	-0.4	-1.7	-2.2	1.7	-0.3	-0.4	0	-0.8	0.9
	ZNA (adaptive fine motor)	0 (1)	-3.4	-1	-9.5	0.5	-3	-2.1	-3.5	-7	-1.4
	ZNA (adaptive gross motor)	0 (1)	-2.7	-1.4	-4.6	-0.9	-2.1	-1.7	-4.1	-4.9	-1.5
	ZNA (static balance)	0 (1)	-1.4	-0.3	-2.1	-1.6	-2.7	0	-1	0	-3.1
	ZNA (associated movements)	0 (1)	0.2	0.3	0.9	0.6	0.1	0.6	0.4	-1	-0.1
	ICARS (static score)	total 34	1	1	3	0	0	0	0	4	4
	ICARS (kinetic score)	total 52	5	5	5	3	1	0	10	4	5
	ICARS (dysarthria score)	total 8	0.4	0	1	0	0	0	0	1	1
	ICARS (oculomotor movements)	total 6	1.5	4	3	0	1	0	1	2	2
	ICARS (total ataxia)	total 100	7	10	12	3	2	0	11	11	8

For the Zurich Neuromotor Assessment (ZNA), the scales have been converted into standard *z*-scores. Results that are more than one standard deviation below norm data (as referred in the Zurich Neuromotor Assessment test manual) are considered to be pathologic and are therefore printed in bold. Note that this table is just an overview of the collected results. Not all results are illustrated

Questionnaires

Results of the questionnaires on emotional well-being, possible behavior problems, and quality of life of the participants revealed no significant impairments or restrictions compared with healthy children or young adults. The questionnaires (CBCL and Kidscreen-52) found the participants to be in good general mental health with slightly reduced physical well-being and somatic complaints in some individuals. The majority, however, did not report that somatic symptoms influenced their daily activities. In general, the patients' self-ratings matched the parents' ratings quite well. In individual patients, the CBCL/YSR scales for withdrawal, somatic complaints, social problems, and internalizing showed minor problems. However, there have been no reports of rule-breaking behavior or other externalizing problems. Patient nos. 2, 6, 7, and 8 (all with a lesioned vermis) were reported to have more behavioral problems and to be more affected by emotional disturbances than the other patients. In two participants (patient nos. 1 and 3 - both with an intact vermis), no psychiatric disturbances or behavioral problems were captured by the ratings. Quality of life, as assessed by the ILK-MARSYS, was rated to be average or even above average by all patients and their parents.

Discussion

The present study, with its selection of patients with histories of acquired non-neoplastic cerebellar lesions during childhood, provides a unique opportunity to address speculations about the *developing cognitive cerebellum*.

Not surprisingly, the neurologic examination revealed motor deficits in all patients, especially in fine and gross motor tasks (ZNA). Despite these results, the ICARS revealed only mild and quite heterogeneous signs of ataxia in our cohort. The ICARS has been shown to be a reliable and valid test for ataxia after cerebellar injuries, especially for assessing oculomotor functions [17, 42]. In the present patient group, the subscale for oculomotor movements has indeed been revealed to be the most sensitive ICARS subscale. These results confirm that the cerebellum is an important brain structure for (guided) eye movements. Such restricted voluntary eye movements might be the main cause of possible reading problems. Neuropsychologically based reading problems, due to problems in language processing, are probably secondary in patients with cerebellar injuries. However, in our patient group, no restrictions in reading accuracy and reading speed were observed.

The general intelligence assessments of the whole patient group revealed a mean FSIQ of 102 (SD 11). This result does not significantly differ from the general cognitive abilities of the healthy population. The analysis further revealed no significant correlation between time since injury (in years) and the FSIQ. However, we found a significant positive correlation between age at injury and FSIQ (Pearson correlation 0.779; $p=0.023$). This observation is in line with results obtained in studies with patients suffering from oncological problems, in which younger age at tumor resection is tied to a higher risk for compromised cognitive outcomes [24, 39]. Thus, our results support the idea in the literature that the child's cerebellum plays an important role for developing cognitive functions [24, 34, 35, 39]. We assume that the cerebellum probably triggers the *functional growth* of other brain structures, e.g., the frontal lobe. With increasing

Table 3 Results of the neuropsychological assessments carried out with all eight patients compared to norm

Cognitive function	Cognitive/neuropsychological test material	Norm data mean (SD) or PR	Study sample mean (SD) or PR	Patient nos.							
				1	2	3	4	5	6	7	8
Intellectual ability	WISC-IV/WAIS-III full scale IQ	100 (15)	102 (11)	110	98	108	83	101	108	91	118
Information processing speed	WISC-IV/WAIS-III processing speed	100 (15)	100 (18)	111	79	135	83	91	97	91	111
	WISC-IV/WAIS-III codes	10 (3)	9 (3)	12	7	14	5	8	9	7	10
	WISC-IV/WAIS-III symbol search	10 (3)	11 (3)	12	5	19	9	10	10	10	9
	TAP alertness phasic	PR=50	PR=35	PR=18	8	12	69	50	38	46	42
	TAP alertness median with warning	PR	27	10	16	16	24	58	31	16	46
Attention processes	TAP alertness median without warning	PR	31	12	34	42	21	46	42	16	46
	TAP selective attention median	PR	43	56	82	16	7	2	76	50	54
	TAP selective attention errors	PR	39	43	12	59	54	54	24	24	43
	TAP selective attention omissions	PR	39	50	50	50	50	50	8	4	
	TAP divided attention median auditory	PR	39	21	58	58	31	18	18	46	58
	TAP divided attention median visual	PR	55	73	58	66	16	69	58	50	50
	TAP divided attention total errors	PR	54	34	79	79	50	27	50	79	34
	TAP divided attention total omissions	PR	55	90	84	27	34	38	21	95	50
	TAP incompatibility median	PR	23	14	18	12	12	4	42	46	38
	TAP incompatibility errors	PR	60	93	62	95	86	4	5	73	62
	Executive functions	RWT semantic verbal fluency “animals”	PR	33	23	93	60	2	32	10	5
RWT semantic verbal fluency “sports/fruits”		PR	35	38	27	19	9	72	69	6	39
RWT phonemic verbal fluency “s”		PR	36	63	66	38	5	6	16	28	62
Wisconsin Card Sorting Test (total errors)		PR	69	92	77	92	7	n/a	95	42	77
WSCT (perseverative response)		PR	69	99	87	99	7	n/a	96	47	77
WSCT (perseverative errors)		PR	69	99	86	98	9	n/a	96	50	73
WSCT (non-perseverative errors)		PR	60	73	63	84	8	n/a	87	30	75
Verbal long-term memory	RAVLT run 1	PR	56	25	68	80	90	63	18	4	96
	RAVLT run 5	PR	40	35	55	20	35	83	13	4	71
	RAVLT sum of 1–5	50 (10)	56	48	63	56	60	54	37	33	96
	RAVLT interference trail	PR	64	25	96	45	93	83	68	4	96
	RAVLT loss after interference	PR	63	50	50	91	73	23	45	96	73
	RAVLT loss after 30 min	50 (10)	63	63	66	66	66	50	60	66	63
	RAVLT recognition without mistakes	50 (10)	53	54	54	53	54	68	52	36	54
	RAVLT perseveration	PR	53	38	40	51	4	86	65	86	51
Visuo-spatial long-term memory	REY figure reproduction	50 (10)	46	66	62	55	36	44	27	23	56
	RVDLT recognition	PR	75	100	100	85	80	65	75	15	80
	RVDLT correct	PR	64	95	95	65	95	30	23	15	95

Results that are more than one standard deviation below norm data (as referred in the test manuals) are considered to be pathologic and are therefore printed in bold. The scales used in the present table always match to scales in the particular test manual. This approach has been chosen as these scales are most familiar to clinicians who use the mentioned test. If three or more individuals scored at least one SD below the norm in a particular test, the test is considered to be sensitive. Note that only an aperture of mainly pathological results is illustrated. All results below PR16 (which refers to one SD below the mean of the healthy age-matched population) are considered to be pathologic

PR percentile – mean=50, n/a non-available–missing data

independence of these brain structures from cerebellar support, the importance of the cerebellum for cognitive functioning might decrease. This theory would explain why some adult patients have just minor or no cognitive problems after cerebellar injuries, but children with congenital cerebellar aplasia are most severely affected.

In this patient group, the biggest effect on neuropsychological functions can be seen in the domains of attention and information processing speed. Our results show that children and adolescents with cerebellar lesions are generally slower to react to stimuli (e.g., TAP alertness or TAP selective attention) than healthy children. If the patients perform at normal speed,

they commit significantly more errors and omissions (Table 3). These results contrast with the findings of Haarmeier and Thier, who argue that significant results in most studies addressing the “attentive cerebellum” can be explained by oculomotor, motor, and/or working memory demands [43]. However, the slower reaction times on our tasks cannot be explained by oculomotor problems (as in these subtests no eye movements were required) or motor deficits (as the patients were instructed to have their hands already lying on the response button during the tests). In addition, the aforementioned tasks did not involve working memory.

Significantly slower reaction times in the majority of the patients (and in two cases, also significantly more errors) can further be seen in the TAP subtest for incompatibility when compared to their peers. This subtest is supposed to measure the subject’s susceptibility to interference, and, in contrast to the tasks measuring reaction time, it consists of a working memory component. Susceptibility to interference is associated with compromised executive functions. Significant problems in the semantic and/or phonemic word fluency tests (RWT) further strengthen the observation of executive problems in these patients [8, 11–13]. Taking these results and the diagnosed dysexecutive syndrome of patient nos. 4 into account supports speculations about alteration of the cerebello–frontal circuitry following cerebellar injuries [26, 39, 44].

Some studies imply that the crossing of cerebellar–cortical pathways leads to visuo-spatial problems after left cerebellar injuries and to language disturbances after injuries of the right cerebellar hemisphere, respectively [23, 24]. The present study did not reveal that any language problems had occurred after right cerebellar hemisphere lesions.

Even though support for the involvement of the cerebellum in affective and behavioral regulation processes has emerged from psychiatric studies and from studies on children with congenital cerebellar malformations, it is still unclear if these problems correspond to the phenotype of problems resulting from acquired cerebellar lesions during development [34–37, 45]. The results of the questionnaires revealed that the patients experienced just minor emotional distress. Any patients or parents who did report affective and behavioral regulation problems exclusively mentioned internalizing problems, rather than rule-breaking or aggressive behavior. In four of our eight patients, higher scores on emotional and behavioral problem scales coincided with an involvement of the vermis of the cerebellum in the injury. These observations are in line with reports that show a relationship between affective/behavior problems and an impairment of the vermis in the human cerebellum [16, 38].

Limitations

Even though the present study represents the largest ever reported cohort of pediatric patients with acquired hemor-

rhagic cerebellar lesions, it still only consists of eight participants. Due to the small number of patients, we considered a healthy control group to be inappropriate. However, normative data of healthy children/adolescents were available from the test manuals. Any future study with more participants will need to consider whether a control group might be feasible. Furthermore, our patients sustained their injuries in a circumscribed time period. A topic of interest would be the effect on developing cognitive functions of a non-neoplastic lesion acquired early in life. In addition, cerebellar bleeding might only marginally cause necrosis. Thus, outcome after hemorrhagic cerebellar injury is probably much better compared with neoplastic space-occupying lesions that cause disruption of fibers. Moreover, in the present study, we looked at long-term outcome in adolescence or even early adulthood, and thus, potential short-term problems in these patients have been neglected.

Conclusions

All patients investigated in our study presented with mild and mostly subclinical motor problems that did not impact their activities on a daily basis. Cognitive impairments, if present, were mild in the majority but extremely heterogeneous in profile. This fact shows that detailed and individual-based neuropsychological evaluation is necessary in these patients. The circumscribed motor impairments and mild cognitive problems, which could only be evidenced in laboratory conditions, support the ideas that hemorrhagic lesions show marked acute symptoms, but have a promising long-term prognosis and good quality of life. Though, the presence of cerebellar cognitive affective syndrome, as described in the literature, was only expressed in children with vermis lesions. Children without vermis lesions have not been reported to show any behavioral or emotional disturbances. Our data show that young age at the time of injury and bi-hemispheric cerebellar lesions might be an important predictor for long-term cognitive outcome. Most likely, the developing cerebellum triggers the functional growth of other brain structures. With increasing independence of these brain structures from cerebellar support, the cerebellum becomes less important in processing neuropsychological functions and therefore, less vulnerable to injury.

Acknowledgments We thank all children/adolescents and parents involved in this project for their participation. We are also very thankful to Mrs. Angela Kummer and Mrs. Jacqueline Brunori for their helpful assistance in preparing the manuscript. There has been no conflict of interest. The study was funded by the Departments of Pediatric Neurology of the University Children’s Hospitals of Bern and Zurich.

References

- Holmes G (1939) The cerebellum of man. *Brain* 62:1–30
- Leiner HC, Leiner AL, Dow RS (1986) Does the cerebellum contribute to mental skills? *Behav Neurosci* 100:443–454
- Bracke-Tolkmitt R, Linden A, Canavan AGM, Rockstroh B, Scholz E, Wessel K et al (1989) The cerebellum contributes to mental skills. *Behav Neurosci* 103(2):442–446
- Mariën P, Baillieux H, De Smet HJ et al (2009) Cognitive, linguistic and affective disturbances following a right superior cerebellar artery infarction: a case study. *Cortex* 45:527–536
- Ackermann H, Mathiak K, Riecker A (2007) The contribution of the cerebellum to speech production and speech perception: clinical and functional imaging data. *Cerebellum* 6:202–213
- Ben-Yehudah G, Fiez JA (2008) Impact of cerebellar lesions on reading and phonological processing. *Ann NY Acad Sci* 1145:260–1174
- Murdoch BE (2009) The cerebellum and language: historical perspective and review. *Cortex* 46(7):858–868
- Kalashnikova LA, Zueva YV, Pugacheva OV, Korsakova NK (2005) Cognitive impairments in cerebellar infarcts. *Neurosci Behav Physiol* 35(8):773–779
- Molinari M, Leggio MG (2007) Cerebellar information processing and visuospatial functions. *Cerebellum* 6:214–220
- Hoffmann M, Schmitt F (2004) Cognitive impairment in isolated subtentorial stroke. *Acta Neurol Scand* 109:14–24
- Ravizza SM, McCormick CA, Schlerf JE, Justus T, Ivry RB, Fiez JA (2006) Cerebellar damage produces selective deficits in verbal working memory. *Brain* 129:306–320
- Whigham KB, O'Toole K (2007) Understanding the neuropsychologic outcome of pediatric AVM within a neurodevelopmental framework. *Cognit Behav Neurol* 20:244–257
- Ben-Yehudah G, Guediche S, Fiez JA (2007) Cerebellar contributions to verbal working memory: beyond cognitive theory. *Cerebellum* 6:193–201
- Leggio MG, Tedesco AM, Chiricozzi FR, Clausi S, Orsini A, Molinari M (2008) Cognitive sequencing impairment in patients with focal or atrophic cerebellar damage. *Brain* 131:1332–1343
- Molinari M, Chiricozzi FR, Clausi A, Tedesco AM, De Lisa M, Leggio MG (2008) Cerebellum and detection of sequences, from perception to cognition. *Cerebellum* 8:611–615
- Schmahmann JD, Sherman JC (1998) The cerebellar cognitive affective syndrome. *Brain* 121:561–579
- Timmann D, Konczak J, Ilg W, Domchin O, Hermsdörfer J, Gizewski ER, Schoch B (2009) Current advances in lesion-symptom mapping of the human cerebellum. *Neuroscience* 162(3):836–851
- Kim SG, Ugurbil K, Strick P (1994) Activation of a cerebellar output nucleus during cognitive processing. *Science* 265:949–951
- Hu D, Shen H, Zhou Z (2008) Functional asymmetry in the cerebellum. A brief review. *Cerebellum* 7(3):304–313
- Schmahmann JD, Pandya DN (1997) The cerebrocerebellar system. *Int Rev Neurobiol* 41:31–60
- Middleton FA, Strick PL (1994) Anatomical evidence for cerebellar and basal ganglia involvement in higher cognitive function. *Science* 266:485–461
- Thach WT (2007) On the mechanism of cerebellar contributions to cognition. *Cerebellum* 6:163–167
- Gasparini M, DiPiero C, Ciccarelli O, Cacioppo MM, Pantano P, Lenzi GL (1999) Linguistic impairment after right cerebellar stroke: a case report. *Eur J Neurol* 6:353–356
- Scott RB, Stoodley CJ, Anslow P, Stein J, Sugden EM, Mitchell CD (2001) Lateralized cognitive deficits in children following cerebellar lesions. *Dev Med Child Neurol* 43:685–691
- Riva D (2000) Cerebellar contribution to behaviour and cognition in children. *J Neurolinguist* 13:215–225
- Schmahmann JD, Caplan D (2006) Cognition, emotion and the cerebellum. *Brain* 129:288–292
- Gordon N (2007) The cerebellum and cognition. *Eur J Paediatr Neurol* 11:232–234
- Baillieux H, De Smet HJ, Lesage G, Paquier P, Deyn D, Mariën P (2006) Neurobehavioral alternations in an adolescent following posterior fossa tumor resection. *Cerebellum* 5:289–295
- Levinsohn L, Cronin-Golomb A, Schmahmann JD (2000) Neuropsychological consequences of cerebellar tumor resection in children: cerebellar cognitive affective syndrome in a paediatric population. *Brain* 123:1041–1050
- Charalambides C, Dinopoulos A, Sgouros S (2009) Neuropsychological sequelae and quality of life following treatment of posterior fossa ependymomas in children. *Childs Nerv Syst* 25(10):1313–1320
- Kossorotoff M, Gonin-Flambois C, Gitiaux C, Quijano S, Boddart N, Bahi-Buisson N et al (2010) A cognitive and affective pattern in posterior fossa strokes in children: a case series. *Dev Med Child Neurol* 52(7):626–631
- Riva D, Giorgi C (2000) The cerebellum contributes to higher functions during development: evidence from a series of children surgically treated for posterior fossa tumours. *Brain* 123:1051–1061
- Shevell MI, Majnemer A (1996) Clinical features of developmental disability associated with cerebellar hypoplasia. *Pediatr Neurol* 15:224–229
- Steinlin M (2007) The cerebellum in cognitive processes: supporting studies in children. *Cerebellum* 6:237–241
- Steinlin M, Schmid M, Landau K, Boltshauser E (1997) Follow-up in children with Joubert syndrome. *Neuropediatrics* 28(4):204–211
- Volpe JJ (2009) Cerebellum of the premature infant: rapidly developing, vulnerable, clinically important. *J Child Neurol* 24(9):1085–1104
- Messerschmidt A, Fuiko R, Prayer D, Brugger PC, Boltshauser E, Zoder G, Sterniste W, Weber M, Birnbacher R (2008) Disrupted cerebellar development in preterm infants is associated with impaired neurodevelopmental outcome. *Eur J Pediatr* 167(10):1141–1147
- Tavano A, Grasso R, Gagliardi C, Triulzi F, Bresolin N, Fabbro F, Borgatti R (2007) Disorders of cognitive and affective development in cerebellar malformations. *Brain* 130:2646–2660
- Steinlin M, Imfeld S, Zulauf P, Boltshauser E, Lövsblad KO, Ridolfi Lüthy A, Perrig W, Kaufmann F (2003) Neuropsychological long-term sequelae after posterior fossa tumour resection during childhood. *Brain* 126:1988–2008
- Steinlin M, Pfister I, Pavlovic J, Everts R, Boltshauser E, Capone Mori A et al (2005) The first three years of the Swiss Neuropaediatric Stroke Registry (SNPSR): a population-based study of incidence, symptoms and risk factors. *Neuropediatrics* 36(2):90–97
- Trouillas P, Takayanagi T, Hallett M, Currier RD, Subramony SH, Wessel K et al (1997) International Cooperative Ataxia Rating scale for pharmacological assessment of the cerebellar syndrome. The Ataxia Neuropharmacology Committee of the World Federation of Neurology. *J Neurol Sci* 145:205–211
- Schoch B, Regel JR, Frings M et al (2007) Reliability and validity of ICARS in focal cerebellar lesions. *Mov Disord* 22(15):2162–2169
- Haarmeier T, Thier P (2007) The attentive cerebellum—myth or reality? *Cerebellum* 6:177–183
- Bellebaum C, Daum I (2007) Cerebellar involvement in executive control. *Cerebellum* 6:184–192
- Rapoport M, van Reekum R, Mayberg H (2000) The role of the cerebellum in cognition and behavior: a selective review. *J Neuropsychiatr Clin Neurosci* 12:193–198

References to test materials and questionnaires

- 5-point Test*: Regard M, Stauss E, Knapp P (1982) Children's production of verbal and nonverbal fluency tasks. *Perceptual and Motor Skills* 55: 839–844
- Child Behaviour Check List (CBCL) and Youth Self Report (YSR)*: Achenbach TM (1991) Manual for the Child Behavior Checklist/4–18 and the 1991 Profile. Burlington, USA: University of Vermont, Department of Psychiatry
- Corsi Block Tapping Test (CORSI)*: Milner B (1971) Interhemispheric differences in the localization of psychological processes in man. *British Medical Bulletin* 27, 273–277
- Delis-Kaplan Executive Function System (D-KEFS)*: Delis DC, Kaplan E, Framer IH (2001) Delis–Kaplan Executive Function System. San Antonio, USA: Psychological Corporation. Harcourt Brace and Company
- International Cooperative Ataxia Rating Scale (ICARS)*: Trouillas P, Takayanagi T, Hallett M, et al. (1997) International Cooperative Ataxia Rating scale for pharmacological assessment of the cerebellar syndrome. The Ataxia Neuropharmacology Committee of the World Federation of Neurology. *Journal of Neurological Sciences* 145: 205–211
- Kidscreen-52 questionnaire*: Ravens-Sieberer U, Gosch A, Abel T, Auquier P, Bellach BM, Bruil J, and the European Kidscreen Group (2001) Quality of life in children and adolescents: a European public health perspective. *Social and Preventive Medicine* 46: 297–302
- Marburger inventory to establish the quality of life in children and adolescents (ILK-MARSYS)*: Mattejat F, Remschmidt H (2006) Inventar zur Erfassung der Lebensqualität bei Kindern und Jugendlichen. Ratingbogen für Kinder, Jugendliche und Eltern. Bern, Switzerland: Verlag Hans Huber. (in German)
- Regensburger Word Fluency Test (RWT)*: Aschenbrenner S, Tucha O, Lange KW (2000) Regensburger Word Fluency Test (German version). Göttingen, Germany: Hogrefe. (in German)
- Rey Auditory Verbal Learning Test (RAVLT)*: Rey A (1964) L'examen clinique en psychologie. Paris: Presses Universitaire de France. (in French)
- Rey Osterrieth Complex Figure (REY figure)*: Rey A (1941) L'examen psychologique dans les cas d'encephalopathie traumatique. *Archives de Psychologie* 28,286–340. (in French)
- Waber D, Holmes JM (1985) Assessing children's copy productions of the Rey Osterrieth Complex Figure. *Journal of Clinical and Experimental Neuropsychology* 7: 264–280
- Rey Visual Design Learning Test (RVDLT)*: Rey A (1964) L'examen clinique en psychologie. Paris: Presses Universitaire de France. (in French)
- Test battery of attentional performance (TAP)*: Zimmermann P, Fimm B (2002) TAP Testbatterie zur Aufmerksamkeitsprüfung. Herzogenrath, Germany: Psytest. (in German)
- Wechsler Intelligence Scale for Adults, 3rd edition (WAIS-III)*: Wechsler D (1999) Wechsler Abbreviated Scales of Intelligence (German version). San Antonio, USA: Psychological Corporation. Harcourt Brace and Company
- Wechsler Intelligence Scale for Children, 4th edition (WISC-IV)*: Wechsler D (1991) Wechsler Intelligence Scales for children (German version). San Antonio, USA: Psychological Corporation. Harcourt Brace and Company
- Wisconsin Card Sorting Test (WCST)*: Psychological Assessment Resources (2003) Computerized Wisconsin Card Sort Task Version 4 (WCST). Lutz, USA: Psychological Assessment Resources
- Zurich Neuromotor Assessment battery (ZNA)*: Largo RH, Fischer J, Caffisch J (2002) Zurich Neuromotor Assessment. Zurich, Switzerland: AWE Verlag. (in German)