

Sources and emission of greenhouse gases in Danube Delta lakes

Alina Pavel · Edith Durisch-Kaiser · Sorin Balan ·
Silviu Radan · Sebastian Sobek · Bernhard Wehrli

Received: 28 April 2009 / Accepted: 12 May 2009 / Published online: 9 June 2009
© Springer-Verlag 2009

Abstract Production of methane and carbon dioxide as well as methane concentrations in surface waters and emissions to the atmosphere were investigated in two flow-through lake complexes (Uzlina–Isac and Puiu–Rosu–Rosulet) in the Danube Delta during post-flood conditions in May and low water level in September 2006. Retained nutrients fuelled primary production and remineralisation of bioavailable organic matter. This led to an observable net release of methane, particularly in the lakes Uzlina, Puiu and Rosu in May. Input from the Danube River, from red-buds and benthic release contributed to CH₄ concentrations in surface waters. In addition to significant river input of CO₂, this trace gas was released via aerobic remineralisation within the water column and in top sediments. Emission patterns of CO₂ widely overlapped with those of CH₄. Generally, greenhouse gas emissions peaked in the lake complex adjacent to the Danube River in May due to strong

winds and decreased with increasing hydrological distance from the Danube River. Intense remineralisation of organic matter in the Danube Delta lakes results in a net source of atmospheric greenhouse gases.

Keywords Carbon dioxide emissions · Danube delta · Greenhouse gases · Methane emissions · Wetland lakes

1 Background, aim and scope

The Danube Delta is the second largest river delta in Europe (5,800 km²) after the Volga Delta. It forms a highly productive transition zone between the Danube river system and the Black Sea. The fluvial delta (49%) is strongly influenced by river water from the southern Danube branch, Sfântu Gheorghe. The fluvio-marine delta (51%) is characterised by through-flow and saltwater intrusion from the Black Sea. However, the hydraulic gradient widely prevents saltwater intrusion into the lakes (Panin 1996).

The Delta itself is the vastest compact zone of reed beds in the world (Oosterberg and Bogdan 2000) and effectively filters nutrients and contaminants from the through-flowing water (Friedrich et al. 2003). Compared to other deltas in the world, the Danube Delta is ‘relatively’ unaffected by anthropogenic input (Oosterberg and Bogdan 2000). Nevertheless, in the last century, several channels were dredged and meanders removed with the purpose of improving navigation and letting water rich in oxygen and nutrient to penetrate deeper into the delta to increase fish production. Other changes include the reclamation of about 20% of the delta area as agricultural polders or fishponds, which increased eutrophication.

Transition towards hypertrophy has affected biodiversity and productivity of most aquatic and wetland systems in the

Responsible editor: Walter Giger

A. Pavel · S. Balan · S. Radan
GeoEcoMar, National Institute for Marine
Geology and Geoecology,
024053 Bucharest, Romania

E. Durisch-Kaiser · S. Sobek · B. Wehrli
ETH, Swiss Federal Institute of Technology,
Institute of Biogeochemistry and Pollutant Dynamics,
8092 Zurich, Switzerland

E. Durisch-Kaiser · S. Sobek · B. Wehrli (✉)
Eawag, Swiss Federal Institute of Aquatic
Science and Technology,
6047 Kastanienbaum, Switzerland
e-mail: wehrli@eawag.ch

Danube Delta. Compared to the early 1960s, the loads of inorganic N and P of the River Danube increased five and threefold, respectively. Eutrophication became a serious problem not only in the delta lakes but also in the coastal Black Sea (Friedrich et al. 2003) and was recognised to cause changes in food web structures (Cociasu et al. 1996) and also to increase the potential for greenhouse gas production and export of carbon dioxide and methane to the Black Sea shelf and the atmosphere (Amouroux et al. 2002).

All Danube Delta lakes (DDL) sampled in this study (Fig. 1) are eutrophic in respect to N and P concentrations (Oosterberg and Bogdan 2000). Retention of nutrients, their transformation into phytoplankton and plant biomass and subsequent decomposition in sediments may lead to the release of greenhouse gases from DDL. Next to carbon dioxide (CO₂), methane (CH₄) represents a potent greenhouse gas in global climate, contributing about 15% of the anthropogenic greenhouse effect (Cicerone and Oremland 1988). Most natural CH₄ emissions are linked to wetlands (~83%, IPCC 2007). Emission rates are highly variable over space and time, e.g. local emissions from most types of natural wetlands can vary by a few orders of magnitude over a few metres (IPCC 2001; Pavel 2009). Although wetlands act as a source of CH₄, most may also act as a CO₂ sink due to photosynthesis and sequestration of organic matter in wetland soils or sediments (Brix et al.

2001). In this study, benthic releases of methane were measured to follow up on the remineralisation of organic biomass in lake sediments. Determining the flux of CO₂ and CH₄ to the atmosphere finally allowed linking nutrient dynamics and greenhouse gas emissions from large wetland lakes. An earlier, more detailed publication included measurements of nutrient retention and total nitrogen and phosphorous export (Durisch-Kaiser et al. 2008). In this short paper, we overview the investigations on the greenhouse gases CO₂ and CH₄.

2 Materials and methods

2.1 Study sites

Water samples were taken from five through-flow lakes (Table 1) located in the Romanian part of the Danube Delta (see Fig. 1). The Lakes Uzlina and Isac (lake complex I) belong to the fluvial delta formed by the Gorgova–Uzlina lake complex (Oosterberg and Bogdan 2000) and are strongly influenced by Danube river water. The other three, Ls. Puiu, Rosu and Rosulet (lake complex II), are situated further distant from the Danube branches and belong to the fluvio-marine delta. Lakes Uzlina, Rosu and Rosulet qualify as turbid systems, whereas Lake Isac behaves as

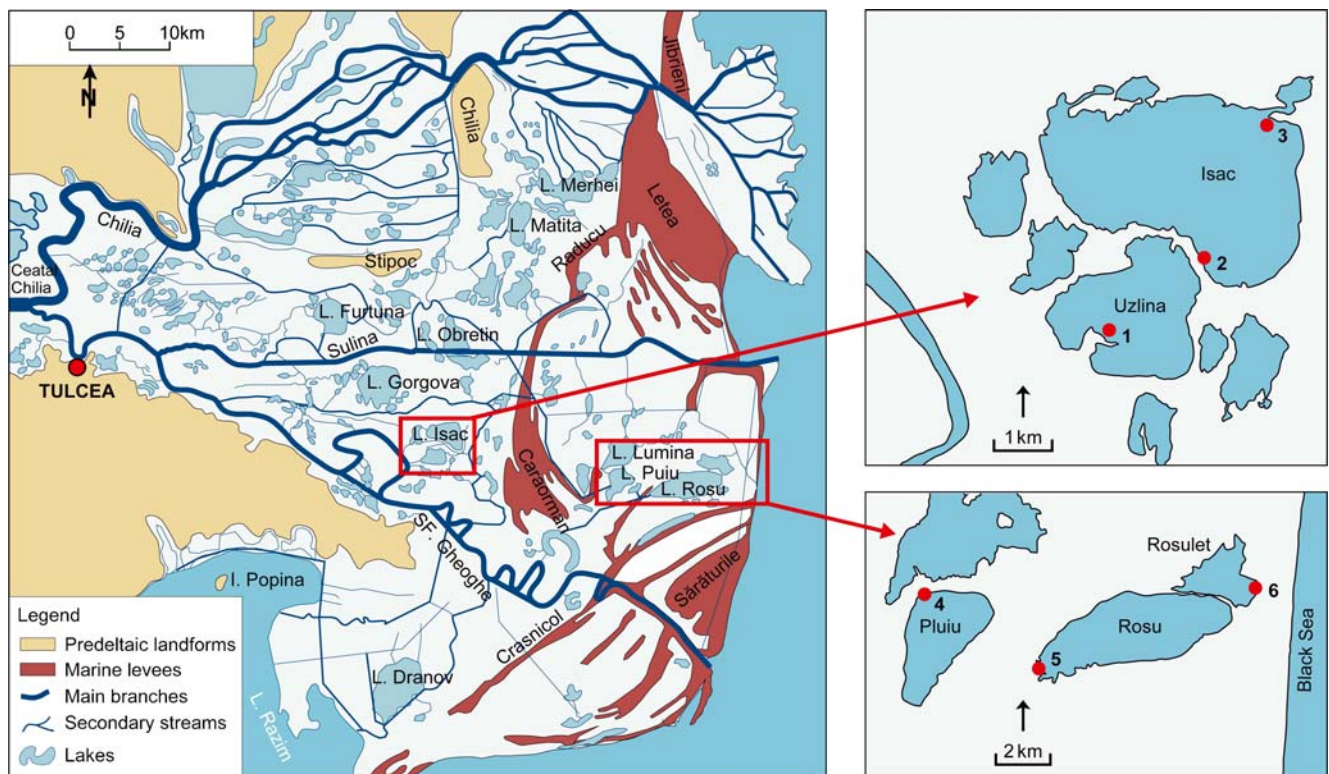


Fig. 1 Geographic map of the studied Danube Delta lakes with the sampling stations: 1 Uzlina-in, 2 Uzlina-out, 3 Isac-out, 4 Puiu-in, 5 Rosu-in and 6 Rosulet-out. Sulina and Sfântu Gheorghe represent the main branches of the River Danube in the delta influencing the investigated lakes

Table 1 Benthic fluxes of methane and sulphate calculated from the sediment–water interface in the different lakes in May and September 2006

Sampling time	CH ₄		SO ₄ ²⁻	
	(μmol m ⁻² h ⁻¹)			
	May	September	May	September
Uzlina-in	299	86	-324	-19
Uzlina-out	67	n. d.	-90	n. d.
Isac-out	152	138	-88	-15
Puiu-in	377	99	-188	-80
Rosu-in	291	203	-267	-5
Rosulet-out	78	116	-248	-113

For experimental details, see Durisch-Kaiser et al. (2008)

n. d. not determined

an intermediate, between clear and turbid and lacks floating vegetation and large loads of suspended solids (Coops et al. 1999). Lake Rosu is separated only by partially submerged sand bars, reed and floating reed islands (*Phragmites* sp. plours) from the outflow of Lake Rosulet and represents the largest lake within the Danube Delta. The water level of the River Danube and the associated delta rises to highest levels between April and June and then decreases to lowest levels in September and October (Panin 1996). The hydraulic residence times during the sampling campaigns varied between 10 and 29 days. In May 2006, we encountered post-flooding conditions with extremely high water flow compared to September.

2.2 Sampling and analyses

For methane analysis, water column and sediment pore water samples were collected in May and September 2006 at the stations outlined in Fig. 1. Water samples were retrieved using a Niskin bottle from three depths (~0.5-m depth, ~1.5- to 3-m depth and ~0.5 m above sediment). Pore water samples were collected at 1-cm intervals from the top sediment to ~0.5-m depth using dialysis pore water samplers or ‘peepers’ (Hesslein 1976; Urban et al. 1997). Samples were transferred bubble-free into 25-mL crimp-seal bottles, poisoned with a saturated solution of CuCl, sealed gastight and stored upside down for further analyses at Eawag (Switzerland). Quantification of methane was accomplished using gas chromatography (JAS-UNIS; Durisch-Kaiser et al. 2008). For a calibration curve, standards of 100 and 1,000 ppm were used (Scotty Speciality Gases, USA).

Concentrations of CO₂ and CH₄ in lake surface water were determined using a continuous-flow high-resolution technique. Water was continuously collected in situ from a

depth of 1 m and pumped (150 L h⁻¹) through a system of three consecutively aligned polypropylene fibre filters (<2-mm pore size) to separate large particles from the samples prior to equilibration between water. Simultaneous recording of GPS coordinates allowed for concentration measurements at high spatial resolution.

Gas measurements were performed using an INNOVA Bruel and Kjaer 1312 multi-gas monitor based on photo-acoustic infrared detection. The gas samples were pumped from the equilibrator headspace into the detection cell. The infrared light was emitted by a pulsating source, passed a narrow-band optical filter and was selectively absorbed by the gas trapped. The gas temperature increased and decreased in response to the pulsating light transmitter. This caused a variation of the gas pressure in the closed cell. Two ultrasensitive microphones located in the cell walls measure the pressure wave, which was directly proportional to the gas concentration. Carbon dioxide and methane concentrations were measured in parallel using different optical filters. The detection limits were 3 ppmv for CO₂ and 0.1 ppmv for CH₄. Data were provided in 2-min intervals. Parameters that governed gas exchange across the water–air interface, i.e. wind speed, water and air temperature, were also measured aboard ship. Wind speed was measured at about 12-m height (Pavel, submitted).

2.3 Flux calculations

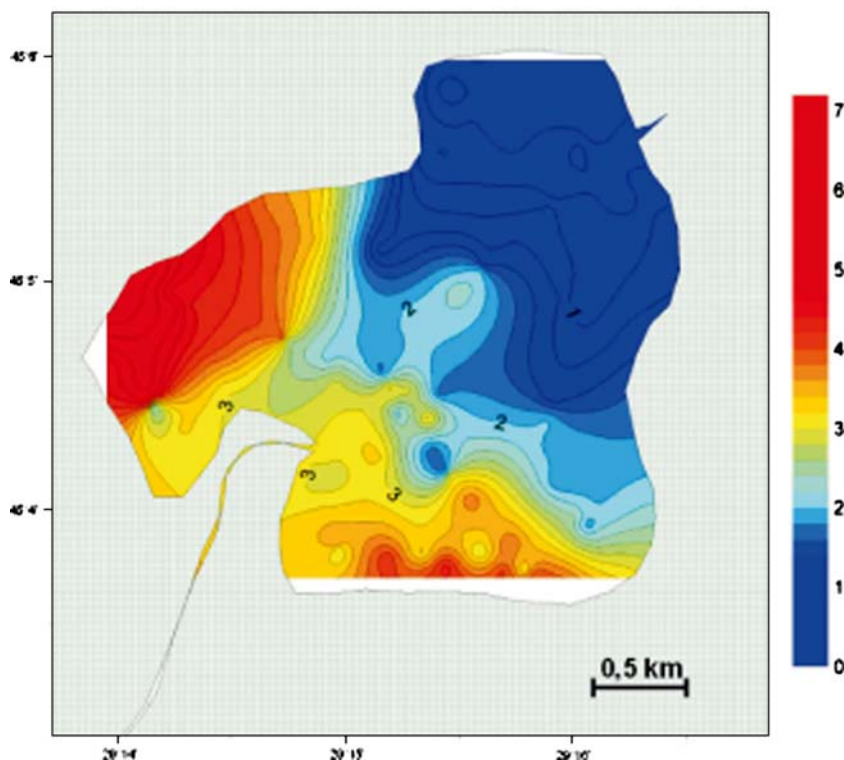
The gas fluxes across the water–air interface were calculated from the transfer velocity using the relations of Crusius and Wanninkhof (2003) and the Schmidt numbers of the gases (Jahne et al. 1987). Benthic fluxes (μmol m⁻² h⁻¹) of methane across the water–sediment interface were calculated along linear concentration gradients at the sediment–water interface using Fick’s first law of diffusion. A molecular diffusion coefficient of 1.57×10⁻⁹m² s⁻¹ was used for methane.

3 Results and discussion

3.1 Diffusive release of greenhouse gases from sediments

Benthic remineralisation of deposited organic biomass contributed to a net greenhouse gas release from both lake complexes (see Fig.1 and Table 1). Methane release from shallow sediments was high at station Uzlina-in, in comparison to the other lakes in complex I in May and September, and compared well to other eutrophic and hypertrophic lakes (Matthews et al. 2005; Huttunen et al. 2006). The fast diffusion rates were correlated with high input of internally produced biomass. Such a particularly

Fig. 2 CO₂ flux distribution map for Lake Uzlina in May 2006. Emissions are expressed in millimoles per square metre per hour (*red*, high emission; *blue*, low emission)



intense algal bloom was observed in Lake Uzlina in September. In addition, deposition of riverine organic particles added to the sediment organic matter load in this lake, which is located closest to one Danube branch.

Benthic release of methane decreased along through-flow in lake complex I (see Table 1), as expected for less intense organic matter deposition at the outlet of lakes Uzlina and Isac compared to the inlet. Sulphate reduction and methanogenesis showed a similar sedimentary turnover

in May. In September, methanogenesis clearly dominated anaerobic decomposition in sediments.

Leaving Lake Isac, water was diverted through a series of channels and reed beds before it entered lake complex II at station Puiu-in. There, benthic release of methane was highest among all lakes in May (see Table 1), indicating that additional inflow from canals leads to substantial organic matter deposition at the inlet to Lake Puiu. Benthic release of methane decreased along the flow path in the Puiu–Rosu

Table 2 Surface water concentrations (mean±SD) and fluxes across the air–water interface (mean±SD) of CO₂ and CH₄ from the Danube Delta lake complexes I and II

Sampling date in 2006 (month)	Lake complex I					Lake complex II				
	Uzlina May	Isac	Puiu	Rosu	Rosulet	Uzlina September	Isac	Puiu	Rosu	Rosulet
CO ₂ concentration (µM)	103±49	49±35	142±77	110±70	63±69	18±10	27±17	n.d.	26±27	n.d.
CH ₄ concentration (nM)	714±257	569±370	891±424	534±113	738±575	644±224	613±161	n.d.	538±119	n.d.
CO ₂ air–water flux (mmol m ⁻² h ⁻¹)	2.3±1.3	4.9±4.5	3.4±2.0	2.4±1.8	0.7±1.0	0.2±0.4	1.2±1.7	n.d.	0.1±0.4	n.d.
CH ₄ air–water flux (µmol m ⁻² h ⁻¹)	18±7	80±51	23±11	13±3	11±9	26±9	62±17	n.d.	7±2	n.d.

Positive air–water fluxes indicate emissions to the atmosphere
n.d. not determined

system in May. The observation could be tentatively linked to diminishing nutrient levels and primary productivity along the lake system. After the intense production period in summer, the benthic releases of CH₄ were highest in Lake Rosu in September, which could indicate that this terminal system collected significant organic carbon fluxes during summer.

3.2 Greenhouse gas emissions from Danube Delta lakes

Seasonal monitoring of greenhouse gas fluxes from surface waters of selected lakes showed that CO₂ and CH₄ emissions peaked in lake complex I, particularly in Lake Isac in May, due to strong winds (Table 2). Spatial patterns in gas release only partially correlated with water column concentrations and benthic effluxes of methane (see Table 1 and Fig. 2), suggesting that several factors like lake depths, hydrology, locally different wind-driven mixing, water column temperature and methanotrophic activity might govern diffusive water–air fluxes (Pavel 2009). Water column concentrations and measured emission rates compare well with published values for eutropic and hypertrophic lakes (e.g. Cole and Caraco 2001; Casper et al. 2000). The high standard deviations reflect the high spatial variability of fluxes to the atmosphere (see Table 2).

In lake complex I in May, concentrations of CO₂ were highest in Lake Uzlina due to massive inflow of CO₂-rich water from the Danube River and surrounding reed beds and due to remineralisation of organic matter within the lake. River water is known to be generally supersaturated with CO₂ (Cole and Caraco 2001; Richey et al. 2002). Danube water contained approximately 37 μM CO₂ before entering lake complex I (unpublished data). This value was lower than the average concentration of 103 μM found in Lake Uzlina in spring, implying that remineralisation of organic matter in reed beds and lake sediments liberated significant amounts of CO₂, leading to a diffusive emission from surface water to the atmosphere on the order of 2.3 mmol m⁻² h⁻¹ in May. About twice as much CO₂ was released from Lake Isac (4.9 mmol m⁻² h⁻¹) due to strong winds. Note that CH₄ concentrations in general were more homogeneously distributed than CO₂.

In Lake Puiu (lake complex II), water column concentrations of CO₂ and CH₄ were strongly impacted by input of water from the Crisan channel in the western part and highest among all lakes investigated in May (see Table 2). Furthermore, emission of CH₄ could be related to high benthic CH₄ release in May (see Table 2). With further longitudinal transport of water masses to Lake Rosu, surface water concentrations of CO₂ decreased, whereas CH₄ stayed fairly constant (see Table 2). In comparison, surface emissions of CO₂ and CH₄ decreased along longitudinal transport to minimum values in Lake Rosulet, a lake in which discharge is most stagnant (see Table 1).

4 Conclusions

This short account shows that water column CO₂ and CH₄ in the Danube Delta lakes derived not only from benthic remineralisation but also from input of river or canal water which, for example, can be clearly observed at Uzlina-in and Puiu-in. Emissions of CO₂ and CH₄ to the atmosphere were only partially coupled to surface water CO₂ and CH₄ concentrations and benthic diffusion rates of methane, which implied that other factors such as water depths, seasonally different wind strengths and methanotrophic activity played an important role. We observed high CO₂ and CH₄ emissions in spring when strong winds prevailed and reduced outgassing in the fall due to stagnant conditions, lower temperature and calm wind conditions.

In summary, in this vast wetland, greenhouse gas production and emission can be positively correlated to patterns of inorganic nutrient and organic matter input, and the Danube Delta lakes are net sources of CO₂ and CH₄ to the atmosphere. This study also shows that improving the spatiotemporal resolution of greenhouse gas analyses in such complex wetland–lake environment holds great promise in linking hotspots of emissions with the governing biogeochemical and physical processes.

Acknowledgements This work was financed by the Swiss National Science Foundation, the Swiss Agency for Development and Cooperation and the Romanian Ministry for Education and Research within the framework of the Swiss-Romanian cooperation programme on ‘Environmental Science and Technology in Romania–ESTROM’. The reported study was performed in the project WASEDY focusing on water and sediment dynamics affecting nutrient cycles and greenhouse gas emissions in the Danube Delta. The authors are grateful to the staff of the R/V Istros for their enormous assistance with water column and sediment sampling, and other field work. We specially thank Christian Dinkel for all his logistical support.

References

- Amouroux D, Roberts G, Rapsomanikis S, Andreae MO (2002) Biogenic gas (CH₄, N₂O, DMS) emission to the atmosphere from near-shore and shelf waters of the north-western Black Sea. *Estuar Coast Shelf Sci* 54:575–587
- Brix H, Sorrell BK, Lorenzen B (2001) Are Phragmites-dominated wetlands a net source or net sink of greenhouse gases? *Aquat Bot* 69:313–324
- Casper P, Maberly SC, Hall GH, Finlay BJ (2000) Fluxes of methane and carbon dioxide from a small productive lake to the atmosphere. *Biogeochemistry* 49:1–19
- Cicerone RJ, Oremland RS (1988) Biogeochemical aspects of atmospheric methane. *Glob Biogeochem Cycles* 2:299–327
- Cociasu A, Dorogan L, Humborg C, Popa L (1996) Long-term ecological changes in Romanian coastal waters of the Black Sea. *Mar Pollut Bull* 32(1):32–38

- Cole JJ, Caraco NF (2001) Carbon in catchments: connecting terrestrial carbon losses with aquatic metabolism. *Mar Freshw Res* 52(1):101–110
- Coops H, Hanganu J, Tudor M, Oosterberg W (1999) Classification of Danube Delta lakes based on aquatic vegetation and turbidity. *Hydrobiologia* 415:187–191
- Crusius J, Wanninkhof R (2003) Gas transfer velocities measured at low wind speed over a lake. *Limnol Oceanogr* 4:1010–1017
- Durisch-Kaiser E, Pavel A, Doberer A, Reutimann J, Balan S, Sobek S, Radan S, Wehrli B (2008) Nutrient retention, total N and P export, and greenhouse gas emission from the Danube Delta lakes. *Geo-Eco-Marina* 14:81–90
- Friedrich J, Dinkel C, Grieder E, Radan S, Secrieru D, Steingruber S, Wehrli B (2003) Nutrient uptake and benthic regeneration in Danube Delta lakes. *Biogeochemistry* 64:373–398
- Hesslein RH (1976) An in-situ sampler for close interval pore water studies. *Limnol Oceanogr* 21:912–914
- Huttunen JT, Vaisanen TS, Hellsten SK, Martikainen PJ (2006) Methane fluxes at the sediment–water interface in some boreal lakes and reservoirs. *Boreal Environ Res* 11(1):27–34
- IPCC (2001) Climate change 2001: 3rd assessment report. Intergovernmental Panel on Climate Change. Cambridge University Press, Cambridge
- IPCC (2007) Climate Change 2007: 4th assessment report. Intergovernmental Panel on Climate Change. Cambridge University Press, Cambridge
- Jahne B, Munnich KO, Bosinger R, Dutzi A, Huber W, Libner P (1987) On the parameters influencing air–water gas-exchange. *J Geophys Res Oceans* 92:1937–1949
- Matthews DA, Effler SW, Matthews CM (2005) Long-term trends in methane flux from the sediments of Onondaga Lake, NY: sediment diagenesis and impacts on dissolved oxygen resources. *Arch Hydrobiol* 163:435–462
- Oosterberg W, Bogdan L (2000) Ecological gradients in the Danube Delta lakes—water quality. RIZA rapport 2000.015, pp 51–70
- Panin N (1996) Danube Delta—genesis, evolution and sedimentology. *Geo-Eco-Marina* 1:11–34
- Pavel A (2009) Dynamics of greenhouse gas production, consumption and emission from Danube Delta lakes. PhD thesis, University of Bucharest
- Richey JE, Melack JM, Aufdenkampe AK, Ballester V, Hess LL (2002) Outgassing from Amazonian rivers and wetlands as a large tropical source of atmospheric CO₂. *Nature* 416:617–620
- Urban NR, Dinkel C, Wehrli B (1997) Solute transfer across the sediment surface of a eutrophic lake: porewater profiles from dialysis samplers. *Aquat Sci* 59:1015–1621