

Hum Genet (2007) 122:23–32
DOI 10.1007/s00439-007-0371-x

ORIGINAL INVESTIGATION

Large genomic fibrillin-1 (*FBNI*) gene deletions provide evidence for true haploinsufficiency in Marfan syndrome

Gábor Mátyás · Sira Alonso · Andrea Patrignani · Myriam Marti · Eliane Arnold · István Magyar · Caroline Henggeler · Thierry Carrel · Beat Steinmann · Wolfgang Berger

Received: 15 March 2007 / Accepted: 18 April 2007 / Published online: 10 May 2007
© Springer-Verlag 2007

Abstract Mutations in the *FBNI* gene are the major cause of Marfan syndrome (MFS), an autosomal dominant connective tissue disorder, which displays variable manifestations in the cardiovascular, ocular, and skeletal systems. Current molecular genetic testing of *FBNI* may miss mutations in the promoter region or in other noncoding sequences as well as partial or complete gene deletions and duplications. In this study, we tested for copy number variations by successively applying multiplex ligation-dependent probe amplification (MLPA) and the Affymetrix Human Mapping 500 K Array Set, which contains probes for ~500,000 single-nucleotide polymorphisms (SNPs) across the genome. By analyzing genomic DNA of 101 unrelated individuals with MFS or related phenotypes in whom standard genetic testing detected no mutation, we identified *FBNI* deletions in two patients with MFS. Our high-resolution approach narrowed down the deletion breakpoints. Subsequent sequencing of the junctional

fragments revealed the deletion sizes of 26,887 and 302,580 bp, respectively. Surprisingly, both deletions affect the putative regulatory and promoter region of the *FBNI* gene, strongly indicating that they abolish transcription of the deleted allele. This expectation of complete loss of function of one allele, i.e. true haploinsufficiency, was confirmed by transcript analyses. Our findings not only emphasize the importance of screening for large genomic rearrangements in comprehensive genetic testing of *FBNI* but, importantly, also extend the molecular etiology of MFS by providing hitherto unreported evidence that true haploinsufficiency is sufficient to cause MFS.

Introduction

Marfan syndrome (MFS; MIM# 154700) is a prevalent connective tissue disorder with variable manifestations in the skeletal, ocular, and cardiovascular systems (De Paepe et al. 1996). MFS is inherited in an autosomal dominant manner and caused by mutations in the gene encoding the 350-kD extracellular matrix protein fibrillin-1 (*FBNI*; MIM# 134797) in the majority of cases (Dietz et al. 1991). Recently, heterozygous mutations in the genes coding for transforming growth factor beta receptors I (*TGFBR1*; MIM# 190181) and II (*TGFBR2*; MIM# 190182) have also been reported in patients with MFS-related disorders, such as MFS type 2 (MFS2; MIM# 154705), Loeys-Dietz aortic aneurysm syndrome (LDS; MIM# 609192), and familial thoracic aortic aneurysms and dissections (TAAD; MIM# 132900), indicating genetic heterogeneity in MFS and its related conditions (Mizuguchi et al. 2004; Loeys et al. 2005; Pannu et al. 2005; Mátyás et al. 2006; Loeys et al. 2006).

In classical MFS patients, mutation analyses have failed to detect *FBNI* involvement in at least 10% of cases,

Gábor Mátyás and Sira Alonso have contributed equally to this work.

G. Mátyás (✉) · S. Alonso · I. Magyar · C. Henggeler · W. Berger
Division of Medical Molecular Genetics and Gene Diagnostics,
Institute of Medical Genetics, University of Zurich,
Schorenstrasse 16, 8603 Schwerzenbach, Zurich, Switzerland
e-mail: matyas@medgen.unizh.ch

A. Patrignani · M. Marti
Functional Genomics Center Zurich,
ETH and University of Zurich, Zurich, Switzerland

E. Arnold · B. Steinmann
Division of Metabolism and Molecular Pediatrics,
University Children's Hospital, Zurich, Switzerland

T. Carrel
Clinic for Cardiovascular Surgery,
University Hospital, Berne, Switzerland

suggesting not only that the disease-causing mutation occurs in a different gene but also demonstrate the limitations of commonly used standard PCR-based screening approaches. Indeed, current molecular genetic testing of *FBNI*, although powerful, may miss mutations in the promoter region or in other noncoding sequences as well as deletions/duplications of the entire gene or part of it. Accordingly, in the locus-specific mutation databases more than 600 unique *FBNI* mutations but only 12 (2.0%) large deletions have been registered (UMD, <http://www.umd.be:2030>; HGMD, <http://www.hgmd.cf.ac.uk/ac/gene.php?gene=FBNI>). In contrast, the relative frequency of large deletions available in the Human Gene Mutation Database (<http://www.hgmd.cf.ac.uk>) containing 64,251 mutations in 2,362 genes (version 09/12/2006) is significantly higher (5.6%), suggesting that more large *FBNI* deletions await detection.

In this study, we tested this hypothesis by applying the recently introduced multiplex ligation-dependent probe amplification (MLPA) technique, which is suitable for the identification of large deletions and less laborious than methods traditionally used for detection of gross rearrangements, such as Southern blot and cytogenetic techniques. MLPA relies on sequence-specific probe hybridization to genomic DNA, followed by amplification of the hybridized probe with universal primers, and semi-quantitative analysis of the resulting PCR products (Schouten et al. 2002). Here, we report on large deletions affecting the 5' region of the *FBNI* gene in two unrelated MFS patients. The breakpoints of the deletions identified by MLPA were narrowed down by means of high-density single-nucleotide polymorphism (SNP) arrays and characterized by using long-range PCR, subsequent cycle sequencing, and transcript analyses. Our data provide hitherto unreported evidence for true haploinsufficiency in patients with MFS.

Subjects and methods

Patients

A cohort of 101 unrelated patients with suspected MFS (~40%) or MFS-like phenotypes (~60%) involving monosymptomatically or predominantly the cardiovascular (~39%), skeletal (~18%) or ocular (~3%) system was selected for this study. In this cohort, previous denaturing high-performance liquid chromatography (DHPLC) analysis and/or sequencing of all exons and flanking intronic regions of *FBNI*, *TGFBR1*, and *TGFBR2* revealed no disease-causing sequence variant (Mátyás et al. 2002a, 2006). Data on the clinical phenotypes of patients were collected from medical records or during physical examinations by one of the authors (B.S, T.C.).

Multiplex ligation-dependent probe amplification (MLPA)

A total of 100 ng of genomic DNA of each patient was screened by MLPA using the SALSA kits P065 (probes for *FBNI* and *TGFBR2*), P066 (probes for *FBNI*), and P148 (probes for both *TGFBR1* and *TGFBR2*), commercially available from MRC-Holland (Amsterdam, The Netherlands), on an ABI PRISM 310 or 3100 Genetic Analyzer (Applied Biosystems, Rotkreuz, Switzerland) according to the manufacturers' instructions. Each MLPA signal was normalized and compared to the corresponding peak area obtained in a control DNA sample. Deviations more than 30% were suspected as alterations and verified by repeated MLPA analysis.

High-density microarray analyses

In order to narrow down the breakpoints of the deletions identified by MLPA, we used the high-density GeneChip Human Mapping 500 K Array Set (Affymetrix, Santa Clara, CA, USA), which contains ~500,000 genomewide SNPs, according to the manufacturer's manual. After hybridization and scanning, raw data were processed using the GCOS 1.4 software (Affymetrix, Santa Clara, CA, USA) and probe cell intensities were calculated and summarized for the respective probe sets by means of the MAS5 algorithm (Hubbell et al. 2002). SNP allele calls, marker intensity values, and quality control measures were computed by the GTYPE software (Affymetrix, Santa Clara, CA, USA) using the integrated RLMM algorithm (Rabbee and Speed 2006). Quality control measures were considered before performing the statistical analysis, including appropriate numbers of present calls (>97%) and control SNP performance (Modified Partitioning Around Medoids [MPAM] algorithm Call Rate [MCR] close to or higher than 90%). For the determination of regions with loss of heterozygosity and decreased signal intensity, advanced data analyses were performed using the academic software tools dChip (Harvard University; <http://www.biosun1.harvard.edu/complab/dchip>) and CNAG2.0 (University of Tokyo; <http://www.genome.umin.jp>).

Amplification and sequencing of the junctional fragments

Primers flanking the predicted deletions were designed based on decreased MLPA and array signal intensities and were used in long-range PCR (44F 5'-ACGAACCTTTCA AATATTCCCC-3', 44R 5'-TGGGAGTGATGGGACA ACTGAG-3', 70F 5'-ACTGCTGCAGAGTGCCTGATA-3', 70R 5'-GGGCTATGTGCTCTGGCTATT-3'). Briefly, 100 ng of DNA and Buffer 3 were used with the Expand Long Template PCR System (Roche Diagnostics, Rotkreuz, Switzerland) according to the manufacturer's instructions

with the following cycling profile: 5 min initial denaturation at 92°C; 10 cycles of 10 s at 92°C, 30 s at 58.5°C (for 44F/44R) or 59.3°C (for 70F/70R), and 8 min at 68°C; followed by 25 cycles of 15 s at 92°C, 30 s at 58.5°C (for 44F/44R) or 59.3°C (for 70F/70R), and 8 min (+20 s/cycle) at 68°C; finished by a 7 min final extension step at 68°C. Amplicons were treated with ExoSAP-IT (USB Corporation, Cleveland, OH, USA) and sequenced using internal primers by means of a BigDye Terminator Cycle Sequencing Ready Reaction kit v1.1 on an ABI PRISM 3100 Genetic Analyzer (Applied Biosystems, Rotkreuz, Switzerland). Sequences were analyzed using SeqScape 2.5 (Applied Biosystems, Rotkreuz, Switzerland) and the genome browser of the University of California, Santa Cruz (UCSC; <http://www.genome.ucsc.edu>). Sequence variants were referenced with respect to the human genome reference sequence (NCBI build 36.1, March 2006) according to the guidelines of the HGVS (<http://www.hgvs.org/mutnomen>).

Transcript analyses

Primary fibroblasts were available only from Patient 70. Total RNA was isolated by the RNeasy mini kit (Qiagen, Hilden, Germany) from cultured fibroblasts. Prior to RNA extraction, fibroblasts were incubated with 10 µg/ml cycloheximide (Actidione; Sigma, St. Louis, MO, USA) for 15 h in order to inhibit potential nonsense-mediated mRNA decay. Reverse transcription (RT)-PCR was used to amplify a complementary DNA (cDNA) fragment (1,484 bp) containing the polymorphism c.8,930C > T (rs1042078, average heterozygosity 0.490 ± 0.071 , dbSNP build 126) that is located in the 3' untranslated region (UTR) of the *FBNI* gene and was detected during the mutation screening at genomic DNA level. RT-PCR was performed by means of the OneStep RT-PCR kit (Qiagen, Hilden, Germany) using 125 ng RNA and primers specific to the *FBNI* exons 63 (5'-AGGGCGGTTACCTGTGTG-3') and 65 (5'-CCCCTTGTTGACAGGAATGAC-3'). RT-PCR product was sequenced by using an internal primer in exon 65 (5'-AGC ACCATTACAAACCCTCACA-3') as described above. The presence of allele-specific transcripts was considered according to the procedure previously outlined (Mátyás et al. 2002b; Qiu et al. 2003).

Results

Multiplex ligation-dependent probe amplification (MLPA)

In 2 out of 101 previously “mutation-negative” patients with MFS or related phenotypes, MLPA analyses resulted in abnormal patterns. In Patient 44, MLPA revealed reduced relative peak areas for both probes of *FBNI* exon 1

(Fig. 1), suggesting the deletion of this exon. Only the father's DNA was available for MLPA analysis, which revealed a normal profile (data not shown). In Patient 70, MLPA showed reduced relative peak areas of fragments corresponding to exons 1–9 and 12–16 (Fig. 1), suggesting the deletion of exons 1–16. The parents of Patient 70 were not available for testing. All other patients showed relative peak areas within the range defined as normal. MLPA for the *TGFBR1* and *TGFBR2* genes (kit P148) showed normal relative peak areas in all patients (data not shown). Taken together, the relative frequency of gross *FBNI* deletions in patients with suspected MFS in whom exon-by-exon screening revealed no mutation in the genes *FBNI*, *TGFBR1*, and *TGFBR2* can be estimated as 2/101 (0.3–7.7%, $P = 0.05$; according to VassarStats, <http://www.faculty.vassar.edu/lowry/prop1.html>). Patients 44 and 70 were sporadic cases and fulfilled the diagnostic criteria of Ghent nosology (Table 1).

Identification and characterization of breakpoints

Loss of heterozygosity and decreased signal intensities upon high-density SNP array analyses confirmed the MLPA results and narrowed down the deletion breakpoints. In Patient 44, loss of heterozygosity occurred in a region spanning 94.5 kb between the SNPs rs1678982 and rs784408, while reduction of signal intensities indicated a deletion of less than 44.4 kb between rs2018854 and rs931781 (Fig. 2a). Similarly, in Patient 70 the deletion was localized to a region of ~317 kb between rs11070644 and rs2899422 by considering decreased array signal intensities (Fig. 3a).

Based on these data, forward and reverse primers were designed for long-range PCR, which resulted in fragments of ~6.5 and ~8.5 kb in Patient 44 and Patient 70, respectively. Due to the size of normal alleles (33.2 kb using primers 44F/44R and 311.3 kb with primers 70F/70R), amplifications were observed from the deleted alleles only, but not from the normal alleles of either Patient 44, his father, Patient 70, or several controls (data not shown). Subsequent sequencing of the long-range PCR products identified a deletion of 26,887 bp in Patient 44 and 302,580 bp in Patient 70 (Figs. 2b, 3b).

Transcript analyses

Both deletions affect exon 1 (345 bp), which contains the translation initiation ATG codon at nucleotide positions 182–184, and a ~4-kb upstream region of the *FBNI* gene, which may harbor the promoter, thus strongly indicating that they abolish the transcription/translation of the respective deleted allele (Figs. 2, 3). This expectation of complete loss of function of one allele (true haploinsufficiency) was confirmed by RT-PCR sequence analysis in Patient 70 being

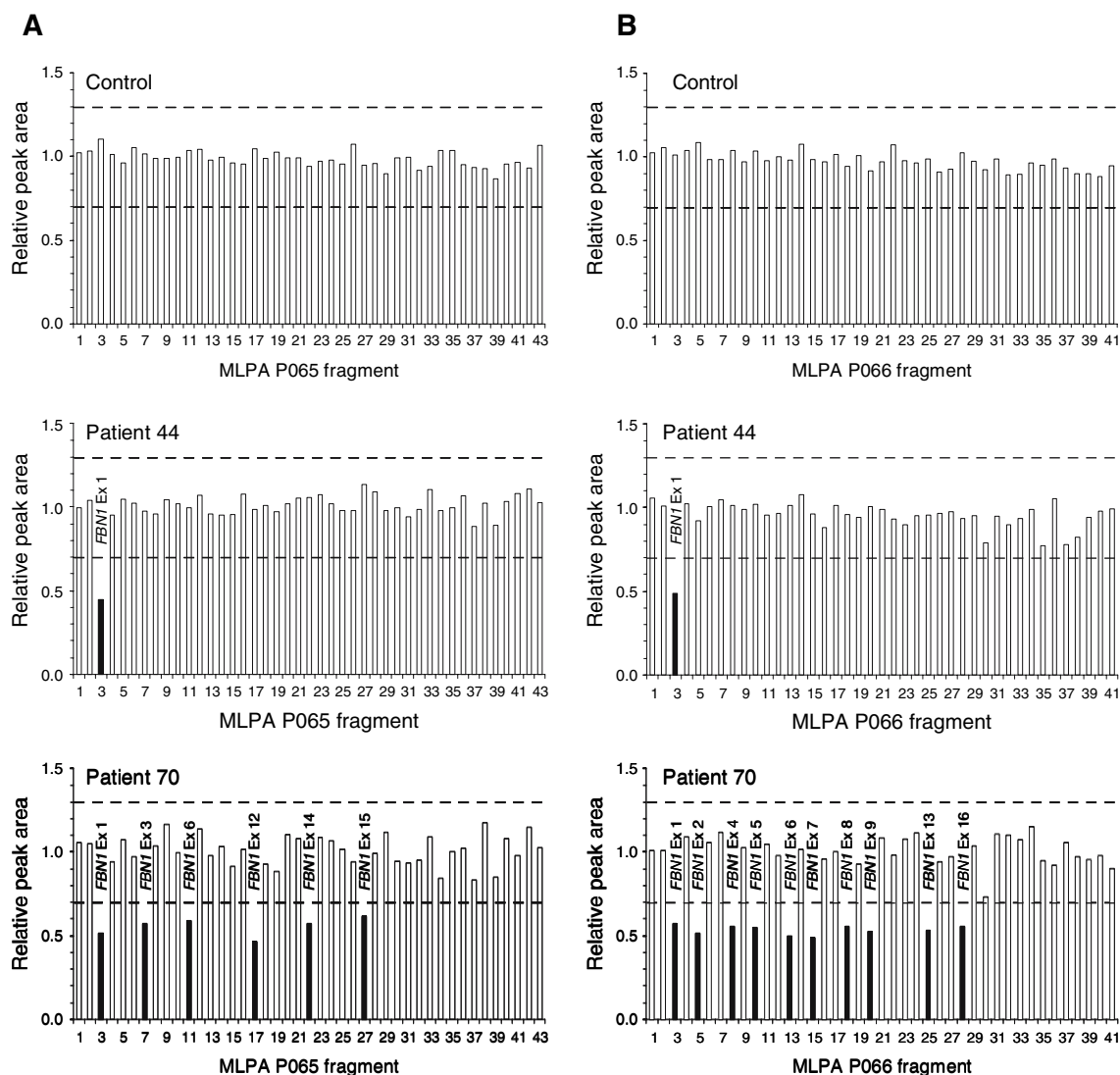


Fig. 1 Results of semiquantitative MLPA analyses in Patients 44 and 70. The normal range of normalized relative peak areas (white bars) is given by dotted lines (± 0.30). Values out of this range are marked by black bars and numbers of the corresponding *FBNI* exons (Ex). **a** Normalized relative peak areas measured with the P065 kit, which consists of 25 MLPA probes for *FBNI* and eleven control MLPA probes located on chromosomes 1, 2, 4, 5, 8, 11, and 16 (fragments 1, 2, 6, 13, 19, 25, 31, 32, 36, 40, and 43) as well as probes for all seven *TGFBR2* exons (fragments 8, 12, 16, 20, 24, 28, and 34). **b** Normalized relative peak

areas measured with the P066 kit, which consists of MLPA probes for 30 *FBNI* exons, in two of which (exons 1 and 6) a probe of P065 is located as well, and eleven control MLPA probes located on chromosomes 1, 3, 5, 6, 13, 16, and 22 (fragments 1, 2, 7, 12, 17, 22, 27, 31, 36, 40, and 41). Taken together the results of the P065 and P066 kits, MLPA revealed reduced relative peak areas of fragments corresponding to the *FBNI* exon 1 in Patient 44 and to the *FBNI* exons 1–9 and 12–16 in Patient 70 (note that there are no MLPA probes for the *FBNI* exons 10 and 11 as well as 20, 22, 27, 32, 37, 39, 48, 51, 59, and 61)

heterozygous for the c.8,930C > T polymorphism in the *FBNI* 3'UTR, which showed the transcription of only one allele (Fig. 4). Appropriate clinical samples were not available from Patient 44 to verify this finding in affected tissue.

Discussion

In this study, we applied for the first time MLPA and high-density SNP arrays to analyze genomic DNA samples of patients with MFS or related phenotypes in whom standard

molecular testing detected no mutation. Our results contribute to the molecular etiology of MFS by providing previously unprecedented evidence for true haploinsufficiency in patients. Our data significantly extend the number of large *FBNI* deletions, which have previously been detected by cDNA or Southern blot analyses (Table 2), demonstrating that comprehensive genetic testing of *FBNI* should include screening for large genomic rearrangements by using an appropriate method.

The P065-P066 MLPA kit used in this study contains probes for 53 of the 65 *FBNI* exons. Since not all *FBNI*

Table 1 Clinical profiles of patients carrying a large deletion identified in this study

Organ systems	Criteria ^a	Patient 44	Patient 70
Skeletal	<i>Major criteria</i>		
	Pectus carinatum	–	+
	Reduced upper-segment to lower-segment ratio or arm span to height ratio >1.05	+	+
	Wrist and thumb signs	+	+
	Scoliosis of >20°	+	–
	Reduced extension at the elbows (<170°)	+	+
	<i>Minor criteria</i>		
	Pectus excavatum of moderate severity (asymmetric)	+	–
	Joint hypermobility	+	–
	Highly arched palate with crowding of teeth	+	+
	Facial appearance (retrognathia, malar hypoplasia, down-slanting palpebral fissures)	+	+
	Nonfamilial overgrowth	+	+
	Ocular	<i>Major criterion</i>	
Ectopia lentis		–	–
<i>Minor criterion</i>			
Cardiovascular	High myopia	+	+
	<i>Major criterion</i>		
	Dilatation of the ascending aorta	+	+
	<i>Minor criterion</i>		
Skin and integument	Mitral valve prolapse with mitral valve regurgitation	+	+
	<i>Minor criterion</i>		
Pulmonary	Striae distensae without obvious cause	+	–
	Pulmonary	NI	NI
	Dura	NP	NP
	Family history	NI	NI

+ Present; – absent; NP not performed; NI system not involved

^a Only criteria present in one of the patients are listed (except major criterion in the ocular system)

exons were analyzed, a deletion or duplication of non-tested exons cannot be excluded. Furthermore, copy-number neutral rearrangements as well as those affecting no MLPA-specific sequences could not be detected because such mutations do not change the relative peak area of MLPA probes. In contrast to traditionally used techniques, MLPA is a simple method to detect gross deletions. However, sequence variations in the probe-binding regions as well as probe and DNA quality may significantly affect MLPA results. Accordingly, it is highly recommended to confirm MLPA results by an independent method. Both deletions described here were also detectable by quantitative real-time PCR (data not shown). Like MLPA, the Mapping 500 K Array Set cannot detect balanced rearrangements and is sensitive to handling and DNA quality in our experience. Deletions that affect only a small proportion of templates (mosaicism) would also be expected to present detection problems for both MLPA and SNP array technologies.

The deletions presented here generated junction fragments with short stretches of identical sequences at the sites of breakpoints (Figs. 2b, 3b), a phenomenon that has been

described not only in *FBNI* but also in other genes (Giacalone and Francke 1992; Otto et al. 2000; Liu et al. 2001). The precise mechanism of this phenomenon, however, remains to be elucidated. Both deletions comprise exon 1 and a ~4-kb upstream region of *FBNI*, a surprising finding not reported before, which is most likely due to the limitations of previously used screening methods. A priori, one might expect that these deletions affect the regulatory or promoter regions of *FBNI*. Indeed, both deleted regions include the three alternatively spliced exons of the *FBNI* gene (C, A, and B; Fig. 2a), which are thought to have regulatory function (Corson et al. 1993; Biery et al. 1999). Furthermore, although little is known about the *FBNI* promoter region, very recent studies indicates that the *FBNI* gene is controlled by a single promoter with a start site located up to 500 bases upstream (5') of the ATG start codon (11th International Congress of Human Genetics, <http://www.ichg2006.com/abstract/488.htm>), which is affected by both deletions as well.

In general, no transcript will be produced when the promoter is deleted, unless alternative down- or up-stream

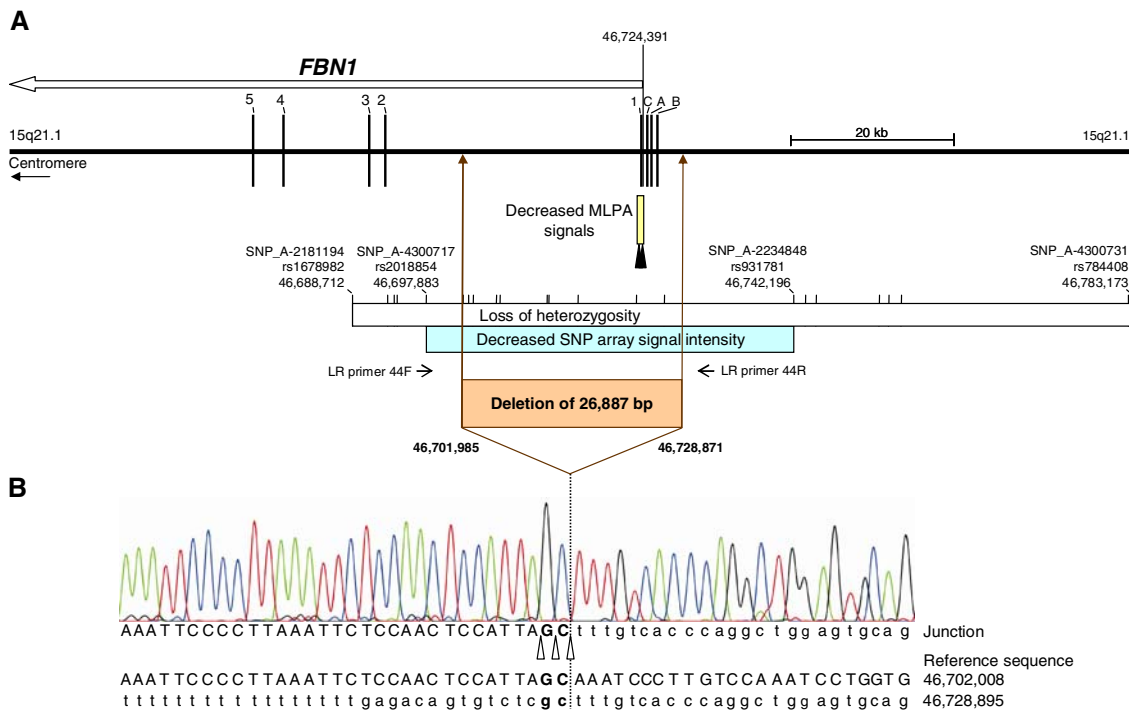


Fig. 2 Breakpoint analyses in Patient 44. **a** Schematic representation of the genome in the region of deletion as well as an overview of the results of the MLPA and SNP array analyses. The *open arrow* below the gene name indicates the direction of transcription. Exons are specified by bars and marked with the corresponding number or character (cf. C, A, and B are alternatively spliced exons of *FBNI*, while exon 1, also known as exon M, harbors the presumptive translation initiation codon). The region with decreased normalized MLPA signals (Fig. 1) is indicated by a *yellow bar* and the positions of the two MLPA probes located in exon 1 of *FBNI* are denoted by *arrows (filled triangle)*. The regions with loss of heterozygosity and decreased SNP array signal intensity both gained by the Affymetrix GeneChip Human Mapping 500 K Array Set are indicated by *white* and *blue bars*, respectively (note that the flanking SNPs are not included in the regions, displaying

an open interval). The positions of SNPs tested in the array set are denoted by *vertical lines*. Note the large region (~67 kb) with loss of heterozygosity not associated with the deletion. Primers designed for long-range PCR (LR primers 44F and 44R) and the deleted region of the genomic DNA (*brown bar*) are indicated. **b** Sequences of the long-range PCR product spanning the breakpoint junction of the deletion. *Uppercase letters* indicate sequences of *FBNI* intron 1, *lowercase letters* denote intergenic sequences. Due to identical sequences at the site of breakpoints, the break and rejoining could have occurred at three positions as indicated by *arrows (open triangle)*. The *dotted line* marks the most telomeric position of the possible breakpoints. All nucleotide positions are described in relation to the human genome reference sequence (NCBI build 36.1)

promoter is activated. The latter occurs when a deletion fuses two genes that are in the same transcriptional orientation. Since the deletion in Patient 70 involves also the neighboring *CEP152* gene, which encodes the centrosomal protein of 152 kDa with unknown function (Fig. 3a), we made use of a polymorphism in the *FBNI* 3'UTR to determine whether or not both alleles are transcribed. In Patient 70, sequence analysis of RT-PCR products revealed transcripts from only one allele (Fig. 4). This finding is consistent with the expectation that the deletion involves the regulatory and promoter regions and thus prevents transcription. The impact of the partial deletion of *CEP152*, if any, is unknown. In Patient 44, the activation of an alternative cryptic promoter, e.g. downstream of the deletion in intron 1 of *FBNI*, could not be excluded. The quantification of the total amount of *FBNI* transcripts was not within the scope of this study, but, similar to other modifying factors, differences in normal *FBNI* expression may explain some

of the clinical variability seen in Patients 44 and 70 (Table 1), as previously demonstrated in a family with MFS (Hutchinson et al. 2003). Although, except of the father of Patient 44, neither the parents nor other family members (with no hints for MFS by history) were available for genetic testing, negative family histories suggest de novo occurrence of the deletions.

Interestingly, neither Patient 44 nor Patient 70 presents any sign of ectopia lentis. This is in accordance with the observation that MFS patients with a premature termination codon (PTC) mutation, which can lead to functional haploinsufficiency, i.e., preferential degradation of mutant transcripts due to nonsense-mediated mRNA decay (NMD), have a distinctly lesser chance of developing ectopia lentis than individuals with *FBNI* cysteine substitutions (Schrijver et al. 2002; Rommel et al. 2005). However, the clinical findings in Patients 44 and 70 could also be explained by the lack of ocular involvement seen in about one third of

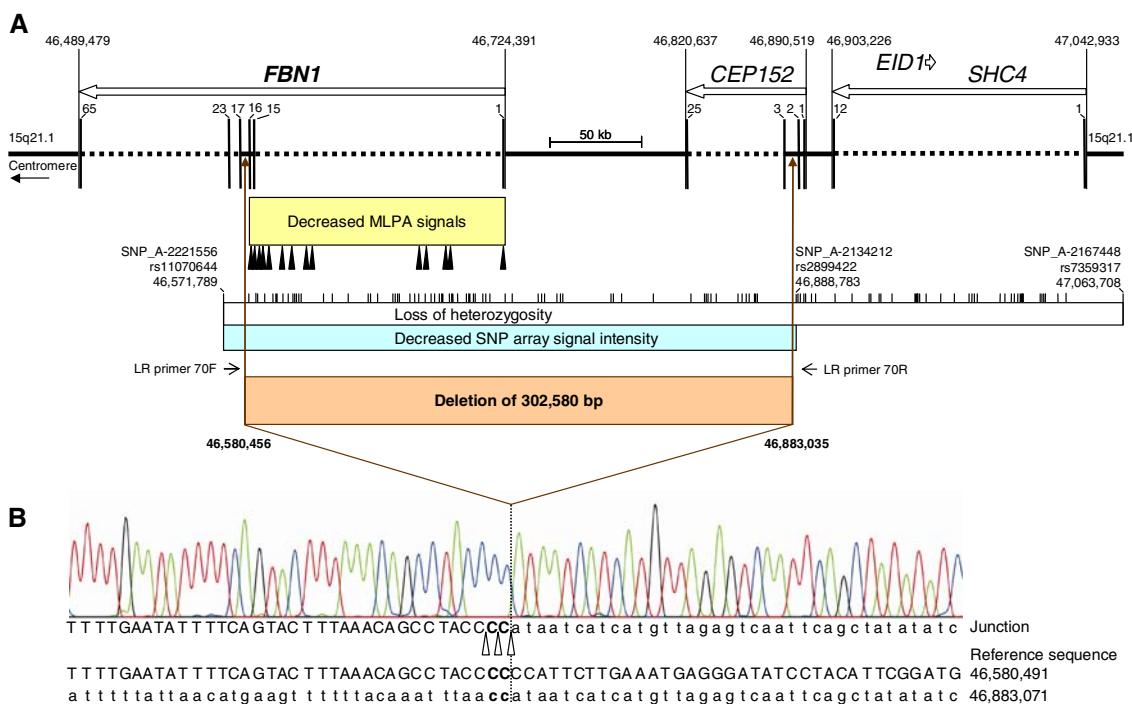


Fig. 3 Breakpoint analyses in Patient 70. Symbols and labels are as used in Fig. 2. **a** Schematic representation of the genome in the region of deletion as well as overview of the results of the MLPA and SNP array analyses. Note the extended region (~180 kb) with loss of heterozygosity not deleted. Forward and reverse primers designed for long-

range PCR are indicated (LR primers 70F and 70R). For clarity, exons C, A, and B of *FBNI* are not shown (cf. Fig. 2). **b** Sequences of the long-range PCR product spanning the breakpoint junction of the deletion. *Uppercase letters* indicate sequences of *FBNI* intron 16, and *lowercase letters* denote sequences of *CEP152* intron 2

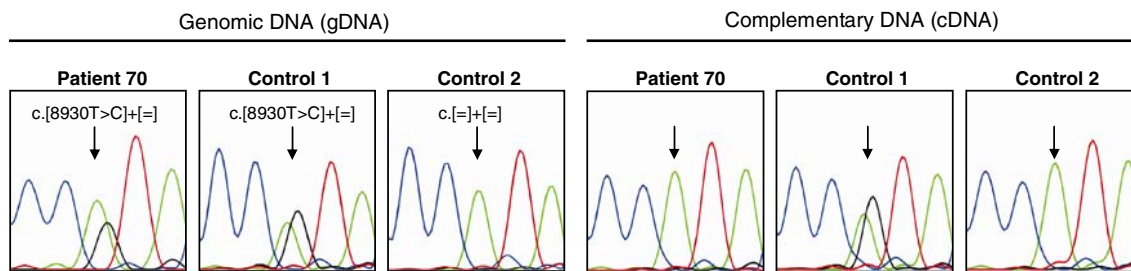


Fig. 4 Partial reverse sequence of the *FBNI* 3' untranslated region flanking the polymorphism c.8,930C > T (g.46,490,165 NCBI build 36.1; *arrowed*). Note that the cDNA sequence of Patient 70 heterozygous for c.8,930C > T lacks allele C (*black*) and is indistinguishable from the cDNA sequence of Control 2 homozygous for allele T

(*green*), while in the controls the results at gDNA and cDNA levels are consistent with respect to each other. Complementary DNA sequences were derived from cultured fibroblast mRNA stabilized by the translation inhibitor cycloheximide

MFS patients. In this context, mutations resulting in functional haploinsufficiency can also be associated with mild phenotypes which may fail to meet the diagnostic criteria for MFS (Dietz et al. 1993). However, such association between mutant transcript abundance and disease severity could not be found in Patients 44 and 70, similar to previously reported patients with classic severe MFS who harbored very low levels of PTC-containing mutant transcripts (Halliday et al. 1999).

Taken together, Patient 70, and most likely Patient 44 as well, have only a single functional *FBNI* allele, represent-

ing true haploinsufficiency. Since the first description of an *FBNI* mutation (Dietz et al. 1991), the role of haploinsufficiency in the pathogenesis of MFS has been the subject of intensive investigations and discussions. Mouse models suggested a critical threshold of functional microfibrils in the disease presentation of MFS (Pereira et al. 1999) and provided evidence for a critical contribution of haploinsufficiency by showing that half-normal amounts of fibrillin-1 can be insufficient to initiate productive microfibrillar assembly (Dietz and Mecham 2000; Judge et al. 2004). Furthermore, mouse MFS models showed that mice

Table 2 Overview of cases with large genomic deletions affecting the *FBNI* gene

Deletion (<i>FBNI</i> exon affected) ^a	Detection rate ^b	Patient		Reference (Year)
		Age (years)	Phenotype ^c	
g.46,701,985_46,728,871del26,887 (1) ^d	1/101	25	See Table 1	Patient 44 in this study
g.46,580,456_46,883,035del302,580 (1–16) ^d	1/101	40	See Table 1	Patient 70 in this study
FBNI:g.182,966_189,399del6,434 (42–43) ^e	1/60	>45	Classic MFS	Liu et al. (2001)
FBNI:g.192,760_199,897del7,138 (44–46) ^f	1/60	0	Neonatal MFS	Liu et al. (2001)
FBNI:p.Asp2127_Val2165del (52) ^g	1/93	40	Classic MFS	Loeys et al. (2004)
FBNI:c.7,456_7,821del366 (60–62) ^h	1/61	48	Classic MFS	Kainulainen et al. (1992)
FBNI:g.219,771_231,247del11,477 (58–63) ⁱ	1/11	17	Classic MFS	Singh et al. (2007)

^a Only deletions not detectable by standard exon-by-exon screening methods on genomic DNA level are shown. Cytogenetically detectable deletions encompassing the *FBNI* gene, such as deletions involving 15q21.1, 15q or the entire chromosome 15 (Fukushima et al. 1990; Dierlamm et al. 2003; Shur et al. 2003; Pramparo et al. 2005), are not included here because these chromosomal abnormalities affect not only *FBNI* but also several other genes. For similar reason, entire *FBNI* allele deletions reported by Hutchinson et al. (2003) and Adès et al. (2006) as well as mentioned by Judge et al. (2004) are not included. In accordance with the guidelines of the HGVS (<http://www.hgvs.org/mutnomen>), in the description of deletions affecting only the *FBNI* gene (FBNI:) position +1 corresponds to the first nucleotide of the *FBNI* reference sequence (GenBank NC_000015.8) at genomic DNA (g) level, to the A of the ATG start codon of the mRNA reference sequence (GenBank NM_000138.3) at cDNA (c) level and to the translation initiator methionine of the reference sequence (GenBank NP_000129.2) at protein (p) level, respectively

^b Detection rate (#1/#2) is given as the number of cases with the respective mutation (#1) among patients screened in the corresponding study (#2)

^c MFS Marfan syndrome

^d Described in relation to the human genome reference sequence (NCBI build 36.1, March 2006), starting with the first-deleted and ending with the last-deleted nucleotide. See also Figs. 2 and 3

^e The nucleotide at position +325 in intron 41 is joined to the nucleotide in position +314 in intron 43 (Liu et al. 2001)

^f The breakage and rejoining occurred within the pentamer (atTTT) at positions –282 to –278 of intron 43 and positions –325 to –321 of intron 46 (Liu et al. 2001)

^g In the study of Loeys et al. (2004), this deletion involving exon 52 was not identified by mutation screening of *FBNI* genomic DNA but by cDNA analyses and was described solely at the protein level as presented here

^h This deletion was originally published by Kainulainen et al. (1992) as c.4,762_5,127del366 using an at that time incomplete *FBNI* cDNA sequence for the description

ⁱ The nucleotide at position –88 in intron 57 is joined to the nucleotide in position +1,062 in intron 63 (Singh et al. 2007)

haploinsufficient in fibrillin-1 have marked dysregulation of transforming growth factor beta (TGF-beta) signaling (Neptune et al. 2003), most likely due to the fact that fibrillin-1 regulates the bioavailability of TGF-beta 1 (Chaudhry et al. 2007). In humans, although several observations supported a traditional dominant-negative mechanism, it has been suggested that functional haploinsufficiency through NMD of most of the mutant mRNAs plays a role in the pathogenic mechanism of MFS (Dietz et al. 1993; Hewett et al. 1994; Nijbroek et al. 1995; Pepe et al. 2001; Caputi et al. 2002; Judge and Dietz 2005; Robinson et al. 2006). However, since mutant transcripts being subject to NMD are often not completely degraded, it has remained unclear, whether the potent dominant-negative effect of the remaining mutant transcripts leads to the disease. Even cytogenetically detectable heterozygous deletions of the entire *FBNI* gene, although suggested, failed to demonstrate the role of true haploinsufficiency in MFS, because these chromosomal abnormalities affect not only *FBNI* but also several other genes, resulting in different phenotypes do not meet the Ghent criteria (e.g., Hutchinson et al. 2003; Adès et al. 2006). Hence, the findings in this study demonstrate for the

first time that true haploinsufficiency, i.e., the complete loss of function of one *FBNI* allele, is sufficient to cause MFS in patients. In such cases, increased expression from the normal *FBNI* allele may represent a novel therapeutic avenue.

Acknowledgments We are grateful to the patients, the father of Patient 44, and the referring physicians for participating in this study. We thank Marzanna Künzli, Ulrich Wagner, Philippe Reuge for technical support and assistance; Angelika Schwarze for cell cultures; Melanie Maudrich for initial mutation analysis of the *FBNI* gene; members of the Institute of Medical Genetics, University of Zurich, for constructive discussions. This work was supported by the Functional Genomics Center Zurich and grants from the Foundation for Research at the Medical Faculty and Research Funding of the University of Zurich (to G.M.), Swiss Heart Foundation (to G.M.), Swiss National Science Foundation (NF 3200B0-109370/1 to B.S.), and the Wolferrmann-Nägeli-Stiftung Zurich (to B.S.).

References

- Adès LC, Sullivan K, Biggin A, Haan EA, Brett M, Holman KJ, Dixon J, Robertson S, Holmes AD, Rogers J, Bennetts B (2006) *FBNI*, *TGFBR1*, and the Marfan-craniosynostosis/mental retardation disorders revisited. *Am J Med Genet A* 140:1047–1058

- Biery NJ, Eldadah ZA, Moore CS, Stetten G, Spencer F, Dietz HC (1999) Revised genomic organization of *FBNI* and significance for regulated gene expression. *Genomics* 56:70–77
- Caputi M, Kendzior RJ Jr, Beemon KL (2002) A nonsense mutation in the fibrillin-1 gene of a Marfan syndrome patient induces NMD and disrupts an exonic splicing enhancer. *Genes Dev* 16:1754–1759
- Chaudhry SS, Cain SA, Morgan A, Dallas SL, Shuttleworth CA, Kielty CM (2007) Fibrillin-1 regulates the bioavailability of TGFβ1. *J Cell Biol* 176:355–67
- Corson GM, Chalberg SC, Dietz HC, Charbonneau NL, Sakai LY (1993) Fibrillin binds calcium and is coded by cDNAs that reveal a multidomain structure and alternatively spliced exons at the 5' end. *Genomics* 17:476–484
- De Paepe A, Devereux RB, Dietz HC, Hennekam RCM, Pyeritz RE (1996) Revised diagnostic criteria for the Marfan syndrome. *Am J Med Genet* 62:417–426
- Dierlamm J, Schilling G, Michaux L, Hinz K, Penas EM, Seeger D, Hagemeyer A, Hossfeld DK (2003) Deletion of chromosome 15 represents a rare but recurrent chromosomal abnormality in myelocytic malignancies. *Cancer Genet Cytogenet* 144:1–5
- Dietz HC, Mecham RP (2000) Mouse models of genetic diseases resulting from mutations in elastic fiber proteins. *Matrix Biol* 19:481–488
- Dietz HC, Cutting GR, Pyeritz RE, Maslen CL, Sakai LY, Corson GM, Puffenberger EG, Hamosh A, Nanthakumar EJ, Curristin SM, Stetten G, Meyers DA, Francomano CA (1991) Marfan syndrome caused by a recurrent *de novo* missense mutation in the fibrillin gene. *Nature* 352:337–339
- Dietz HC, McIntosh I, Sakai LY, Corson GM, Chalberg SC, Pyeritz RE, Francomano CA (1993) Four novel *FBNI* mutations: significance for mutant transcript level and EGF-like domain calcium binding in the pathogenesis of Marfan syndrome. *Genomics* 17:468–475
- Fukushima Y, Wakui K, Nishida T, Nishimoto H (1990) Craniosynostosis in an infant with an interstitial deletion of 15q [46,XY,del(15)(q15q22.1)]. *Am J Med Genet* 36:209–213
- Giacalone JP, Francke U (1992) Common sequence motifs at the rearrangement sites of a constitutional X/autosome translocation and associated deletion. *Am J Hum Genet* 50:725–741
- Halliday D, Hutchinson S, Kettle S, Firth H, Wordsworth P, Handford PA (1999) Molecular analysis of eight mutations in *FBNI*. *Hum Genet* 105:587–597
- Hewett D, Lynch J, Child A, Firth H, Sykes B (1994) Differential allelic expression of a fibrillin gene (*FBNI*) in patients with Marfan syndrome. *Am J Hum Genet* 55:447–452
- Hubbell E, Liu WM, Mei R (2002) Robust estimators for expression analysis. *Bioinformatics* 18:1585–1592
- Hutchinson S, Furger A, Halliday D, Judge DP, Jefferson A, Dietz HC, Firth H, Handford PA (2003) Allelic variation in normal human *FBNI* expression in a family with Marfan syndrome: a potential modifier of phenotype? *Hum Mol Genet* 12:2269–2276
- Judge DP, Dietz HC (2005) Marfan's syndrome. *Lancet* 366:1965–1976
- Judge DP, Biery NJ, Keene DR, Geubtner J, Myers L, Huso DL, Sakai LY, Dietz HC (2004) Evidence for a critical contribution of haploinsufficiency in the complex pathogenesis of Marfan syndrome. *J Clin Invest* 114:172–181
- Kainulainen K, Sakai LY, Child A, Pope FM, Puhakka L, Ryhanen L, Palotie A, Kaitila I, Peltonen L (1992) Two mutations in Marfan syndrome resulting in truncated fibrillin polypeptides. *Proc Natl Acad Sci USA* 89:5917–5921
- Liu W, Schrijver I, Brenn T, Furthmayr H, Francke U (2001) Multi-exon deletions of the *FBNI* gene in Marfan syndrome. *BMC Med Genet* 2:11
- Loeys B, De Backer J, Van Acker P, Wettinck K, Pals G, Nuytinck L, Coucke P, De Paepe A (2004) Comprehensive molecular screening of the *FBNI* gene favors locus homogeneity of classical Marfan syndrome. *Hum Mutat* 24:140–146
- Loeys BL, Chen J, Neptune ER, Judge DP, Podowski M, Holm T, Meyers J, Leitch CC, Katsanis N, Sharifi N, Xu FL, Myers LA, Spevak PJ, Cameron DE, De Backer J, Hellemans J, Chen Y, Davis EC, Webb CL, Kress W, Coucke P, Rifkin DB, De Paepe AM, Dietz HC (2005) A syndrome of altered cardiovascular, craniofacial, neurocognitive and skeletal development caused by mutations in *TGFBR1* or *TGFBR2*. *Nat Genet* 37:275–281
- Loeys BL, Schwarze U, Holm T, Callewaert BL, Thomas GH, Pannu H, De Backer JF, Oswald GL, Symoens S, Manouvrier S, Roberts AE, Faravelli F, Greco MA, Pyeritz RE, Milewicz DM, Coucke PJ, Cameron DE, Braverman AC, Byers PH, De Paepe AM, Dietz HC (2006) Aneurysm syndromes caused by mutations in the TGF-β receptor. *N Engl J Med* 355:788–798
- Mátyás G, De Paepe A, Halliday D, Boileau C, Pals G, Steinmann B (2002a) Evaluation and application of denaturing HPLC for mutation detection in Marfan syndrome: identification of 20 novel mutations and two novel polymorphisms in the *FBNI* gene. *Hum Mutat* 19:443–456
- Mátyás G, Giunta C, Steinmann B, Hossle JP, Hellwig R (2002b) Quantification of single nucleotide polymorphisms: a novel method that combines primer extension assay and capillary electrophoresis. *Hum Mutat* 19:58–68
- Mátyás G, Arnold E, Carrel T, Baumgartner D, Boileau C, Berger W, Steinmann B (2006) Identification and in silico analyses of novel *TGFBR1* and *TGFBR2* mutations in Marfan syndrome-related disorders. *Hum Mutat* 27:760–769
- Mizuguchi T, Collod-Beroud G, Akiyama T, Abifadel M, Harada N, Morisaki T, Allard D, Varret M, Claustres M, Morisaki H, Ihara M, Kinoshita A, Yoshiura K, Junien C, Kajii T, Jondeau G, Ohta T, Kishino T, Furukawa Y, Nakamura Y, Niikawa N, Boileau C, Matsumoto N (2004) Heterozygous *TGFBR2* mutations in Marfan syndrome. *Nat Genet* 36:855–860
- Neptune ER, Frischmeyer PA, Arking DE, Myers L, Bunton TE, Gayraud B, Ramirez F, Sakai LY, Dietz HC (2003) Dysregulation of TGF-β activation contributes to pathogenesis in Marfan syndrome. *Nat Genet* 33:407–411
- Nijbroek G, Sood S, McIntosh I, Francomano CA, Bull E, Pereira L, Ramirez F, Pyeritz RE, Dietz HC (1995) Fifteen novel *FBNI* mutations causing Marfan syndrome detected by heteroduplex analysis of genomic amplicons. *Am J Hum Genet* 57:8–21
- Otto E, Betz R, Rensing C, Schatzle S, Kuntzen T, Vetsi T, Imm A, Hildebrandt F (2000) A deletion distinct from the classical homologous recombination of juvenile nephronophthisis type 1 (NPH1) allows exact molecular definition of deletion breakpoints. *Hum Mutat* 16:211–223
- Pannu H, Fadulu VT, Chang J, Lafont A, Hasham SN, Sparks E, Giampietro PF, Zaleski C, Estrera AL, Safi HJ, Shete S, Willing MC, Raman CS, Milewicz DM (2005) Mutations in transforming growth factor-beta receptor type II cause familial thoracic aortic aneurysms and dissections. *Circulation* 112:513–520
- Pepe G, Giusti B, Evangelisti L, Porciani MC, Brunelli T, Giurlani L, Attanasio M, Fattori R, Bagni C, Comeglio P, Abbate R, Gensini GF (2001) Fibrillin-1 (*FBNI*) gene frameshift mutations in Marfan patients: genotype-phenotype correlation. *Clin Genet* 59:444–450
- Pereira L, Lee SY, Gayraud B, Andrikopoulos K, Shapiro SD, Bunton T, Biery NJ, Dietz HC, Sakai LY, Ramirez F (1999) Pathogenetic sequence for aneurysm revealed in mice underexpressing fibrillin-1. *Proc Natl Acad Sci USA* 96:3819–3823
- Pramparo T, Mattina T, Gimelli S, Liehr T, Zuffardi O (2005) Narrowing the deleted region associated with the 15q21 syndrome. *Eur J Med Genet* 48:346–352
- Qiu P, Soder GJ, Sanfiorenzo VJ, Wang L, Greene JR, Fritz MA, Cai XY (2003) Quantification of single nucleotide polymorphisms by

- automated DNA sequencing. *Biochem Biophys Res Commun* 309:331–338
- Rabbee N, Speed TP (2006) A genotype calling algorithm for affymetrix SNP arrays. *Bioinformatics* 22:7–12
- Robinson PN, Arteaga-Solis E, Baldock C, Collod-Beroud G, Booms P, De Paepe A, Dietz HC, Guo G, Handford PA, Judge DP, Kielty CM, Loeys B, Milewicz DM, Ney A, Ramirez F, Reinhardt DP, Tiedemann K, Whiteman P, Godfrey M (2006) The molecular genetics of Marfan syndrome and related disorders. *J Med Genet* 43:769–787
- Rommel K, Karck M, Haverich A, von Kodolitsch Y, Rybczynski M, Muller G, Singh KK, Schmidtke J, Arslan-Kirchner M (2005) Identification of 29 novel and nine recurrent fibrillin-1 (*FBN1*) mutations and genotype-phenotype correlations in 76 patients with Marfan syndrome. *Hum Mutat* 26:529–539
- Schouten JP, McElgunn CJ, Waaijer R, Zwijnenburg D, Diepvens F, Pals G (2002) Relative quantification of 40 nucleic acid sequences by multiplex ligation-dependent probe amplification. *Nucleic Acids Res* 30:e57
- Schrijver I, Liu W, Odom R, Brenn T, Oefner P, Furthmayr H, Francke U (2002) Premature termination mutations in *FBN1*: Distinct effects on differential allelic expression and on protein and clinical phenotypes. *Am J Hum Genet* 71:223–237
- Shur N, Cowan J, Wheeler PG (2003) Craniosynostosis and congenital heart anomalies associated with a maternal deletion of 15q15-22.1. *Am J Med Genet A* 120:542–546
- Singh KK, Elligsen D, Liersch R, Schubert S, Pabst B, Arslan-Kirchner M, Schmidtke J (2007) Multi-exon out of frame deletion of the *FBN1* gene leading to a severe juvenile onset cardiovascular phenotype in Marfan syndrome. *J Mol Cell Cardiol* 42:352–356