



Global trends in social inequalities in Europe and Latin America and exploring innovative ways to reduce them through life, occupational and educational trajectories research to face uncertainty



Marie Skłodowska-Curie Actions (MSCA)
Research and Innovation Staff Exchange (RISE)
H2020-MSCA-RISE-2015
GA-691004

Working Paper 2 from Thematic Research 1 to 11

**Work Package 2
Deliverable D5**

30th April, 2018

INCASI Academic Commission

- **Pedro López-Roldán**, *Main Coordinator, Institut d'Estudis del Treball (IET), Universitat Autònoma de Barcelona.*
- **Sandra Fachelli**, *Researcher and Task Manager, Grup de Recerca en Educació i Treball (GRET), Universitat Autònoma de Barcelona.*
- **Rafael Merino**, *Responsible Researcher, Grup de Recerca en Educació i Treball (GRET), Universitat Autònoma de Barcelona.*
- **Màrius Domínguez**, *Responsible Researcher, Bienestar, comunidad y control social (COPOLIS), Universitat de Barcelona.*
- **Ildefonso Marqués**, *Responsible Researcher, Departamento de Sociología (DS), Universidad de Sevilla.*
- **Laura Oso**, *Responsible Researcher, Equipo de Sociología de las Migraciones Internacionales (ESOMI), Universidade da A Coruña.*
- **José Saturnino Martínez**, *Responsible Researcher, Departamento de Sociología y Antropología (DSA), Universidad de La Laguna.*
- **Leandro Sepúlveda**, *Responsible Researcher, Centre for Enterprise and Economic Development Research (CEÉDR), Middlesex University.*
- **Eriikka Oinonen**, *Responsible Researcher, The Institute for Advanced Social Research (IASR), Tampereen Yliopisto.*
- **Renata Semenza**, *Responsible Researcher, Dipartimento di Scienze Sociali e Politiche (DSSP), Università degli Studi di Milano.*
- **Vincenzo Fortunato**, *Responsible Researcher, Dipartimento di Scienze Politiche e Sociali (DSPS), Università di Calabria.*
- **Julie Jarty**, *Responsible Researcher, Centre d'Etude et de Recherche Travail Organisation Pouvoir (CERTOP), Université de Toulouse Jean Jaurès.*
- **Eduardo Chávez**, *Responsible Researcher, Instituto de Investigaciones Gino Germani (IIGG), Universidad de Buenos Aires.*
- **Agustín Salvia**, *Responsible Researcher, Observatorio de la Deuda Social Argentina (ODSA), Pontificia Universidad Católica Argentina.*
- **Leticia Muñiz**, *Responsible Researcher, Centro Interdisciplinario de Metodología de las Ciencias Sociales (CIMeCS- IdIHCS), Universidad Nacional de La Plata.*
- **Patricia Scarponetti**, *Responsible Researcher, Centro de Estudios Avanzados (CEA), Universidad Nacional de Córdoba*
- **Marcelo Boado**, *Responsible Researcher, Grupo Transición, Educación, Trabajo (TET), Universidad de la República.*
- **Gabriela Rubilar**, *Responsible Researcher, Escuela de Trabajo Social (ETS), Pontificia Universidad Católica de Chile.*
- **Paulina Benítez**, *Responsible Researcher, Departamento de Trabajo Social (DTS), Universidad de Concepción.*
- **Emmanuelle Barozet**, *Responsible Researcher, Centro de Estudios de Conflicto y Cohesión Social (COES), Universidad de Chile.*
- **Graziela Perosa**, *Responsible Researcher, Escuela de Artes, Ciencias y Humanidades (EACH), Universidade da São Paulo.*



Index

1. INTRODUCTION	5
2. THEMATIC AXIS 1: INEQUALITIES IN THE LABOUR MARKET AND LABOUR TRAJECTORIES	10
2.1. Substantive contributions	10
2.2. Summaries of reports	13
3. THEMATIC AXIS 2: ASYMMETRIES IN THE RELATIONSHIP BETWEEN TRAINING AND EMPLOYMENT	20
3.1. Substantive contributions	20
3.2. Summaries of reports	21
4. THEMATIC AXIS 3: INEQUALITIES IN WORK AND FAMILY LIFE	21
4.1. Substantive contributions	21
4.1.1. <i>Gender division of labour (productive and reproductive work), reproduction and participation in the labour market</i>	22
4.1.2. <i>Biographical trajectories of vulnerable children and youth: child labour and household strategies related to youth transitions in the framework of welfare and social policies</i>	24
4.1.3. <i>Education and inequality</i>	25
4.1.4. <i>Care and health status, sexual and reproductive health, poverty, criminalization and criminal control, neoliberalism and gender</i>	26
5. THEMATIC AXIS 4: EDUCATIONAL INEQUALITIES	27
5.1. Substantive contributions	27
5.2. Summaries of reports	28
6. THEMATIC AXIS 5: GEOGRAPHICAL AND SOCIAL INEQUALITIES: ETHNICITY AND LANGUAGE	30
6.1. Substantive contributions	30
6.2. Summaries of reports	31
6.2.1. <i>If it deals with a specific thematic axis of Pillar 1</i>	31
6.2.2. <i>If Pillars 2, 3 or 4 are considered</i>	32
7. THEMATIC AXIS 6: SOCIAL INEQUALITIES, MIGRATION AND SPACE	33
7.1. Summary	33
7.2. Substantive contributions and summaries of reports	33
7.2.1. <i>Migration and social inequalities</i>	33
7.2.2. <i>Social inequalities from an intersectional approach</i>	34
7.2.3. <i>Contribution to the AMOSIT model</i>	35
7.2.4. <i>Contribution to Pillar 2: Methodology</i>	36
7.2.5. <i>Contribution to Pillar 3: Social policies</i>	37
7.2.6. <i>Contribution to Pillar 4: Gender inequalities</i>	37

8.	THEMATIC AXIS 7: UNCERTAINTY, STRATEGIES, RESOURCES AND CAPABILITIES	38
8.1.	Summary	38
8.2.	Substantive contributions and summaries of reports	38
8.2.1.	<i>Pillar 1, Axis 7 (uncertainty, strategies, resources and capacities)</i>	38
8.2.2.	<i>Methodology, Pillar 2</i>	40
8.2.3.	<i>Social policies, Pillar 3</i>	41
8.2.4.	<i>Pillar 4, Gender</i>	41
9.	THEMATIC AXIS 8: INEQUALITY OF OPPORTUNITY: INTERGENERATIONAL SOCIAL MOBILITY	42
9.1.	Summary of substantive contributions	42
9.2.	Summaries of reports	42
9.2.1.	<i>If it deals with a specific thematic axis of Pillar 1</i>	42
9.2.2.	<i>If Pillars 2, 3 or 4 are considered</i>	44
10.	THEMATIC AXIS 9. PILLAR 2: METHODOLOGY	47
10.1.	Substantive contributions	47
10.2.	Summaries of reports	48
11.	THEMATIC AXIS 10. PILLAR 3: SOCIAL POLICIES	48
11.1.	Summary of contributions	48
11.2.	Summaries of reports	48
11.2.1.	<i>Titles of the secondment report</i>	48
11.2.2.	<i>Profile of the sample</i>	50
11.2.3.	<i>Thematic areas</i>	50
11.2.4.	<i>Degree of development of the research and role of social policy</i>	50
11.2.5.	<i>Relationship with AMOSIT model</i>	51
12.	THEMATIC AXIS 11. PILLAR 4: GENDER INEQUALITIES	51
12.1.	Summary of contents	51
12.1.1.	<i>Gender division of labour (productive and reproductive work), reproduction and participation in the labour market</i>	51
12.1.2.	<i>Migrations</i>	52
12.1.3.	<i>Social mobility, education and inequality</i>	52
12.1.4.	<i>Care and health status, sexual and reproductive health, poverty, criminalization and criminal control, neoliberalism and gender</i>	52
12.2.	Substantive contributions and summaries of reports	53
12.2.1.	<i>Rethinking research priorities and outcomes</i>	53
12.2.2.	<i>Rethinking concepts and theories</i>	55
12.2.3.	<i>Formulating research questions</i>	56
12.2.4.	<i>Analysing sex</i>	56
12.2.5.	<i>Analysing gender</i>	58
12.2.6.	<i>Analysing factors intersecting with sex and gender</i>	59

1. Introduction

In the context of the INCASI Project aimed at creating and consolidating an International Network for Comparative Analysis of Social Inequalities, we are carrying out several lines of research as a result of the contributions made in each secondment. The general aim in these secondments is to conduct comparative research in the area of social inequalities between Europe and Latin America, as we established in our original proposal.

The INCASI Project works with 11 thematic axes integrated in a substantive model of analysis called the Analytical Model of Social Inequalities and Trajectories (AMOSIT). These thematic axes configure the four pillars of the Project (Table 1).

Table 1. Pillar and Thematic Axis of the project

Thematic axis	TRG Responsibles	
	Beneficiaries	Partners
PILLAR 1: substantive background and explanatory models of social inequalities		
1 Inequalities in the labor market and labor trajectories	UAB-IET, UNIMI	UCA
2 Asymmetries in the relationship between training and employment	UAB-GRET	UdelaR
3 Inequalities in work and family life	UB, UNICAL	UNLP
4 Educational inequalities	ULL	USP
5 Geographical and social inequalities, ethnicity and language	UTA	UC
6 Social inequalities, migration and space	UDC	UdeC
7 Uncertainty, strategies, resources and capabilities	UAB-GRET	IIGG, UdeC
8 Inequality of opportunity: intergenerational social mobility	US	IIGG, UChile
TRANSVERSAL PILLARS		
9 Pillar 2: Methodology for the analysis of social inequalities	UAB-IET	UdelaR, UNLP
10 Pillar 3: Social policies to counteract social inequalities	MDX	UNC
11 Pillar 4: Gender inequalities	UB, TLSE2	UNC

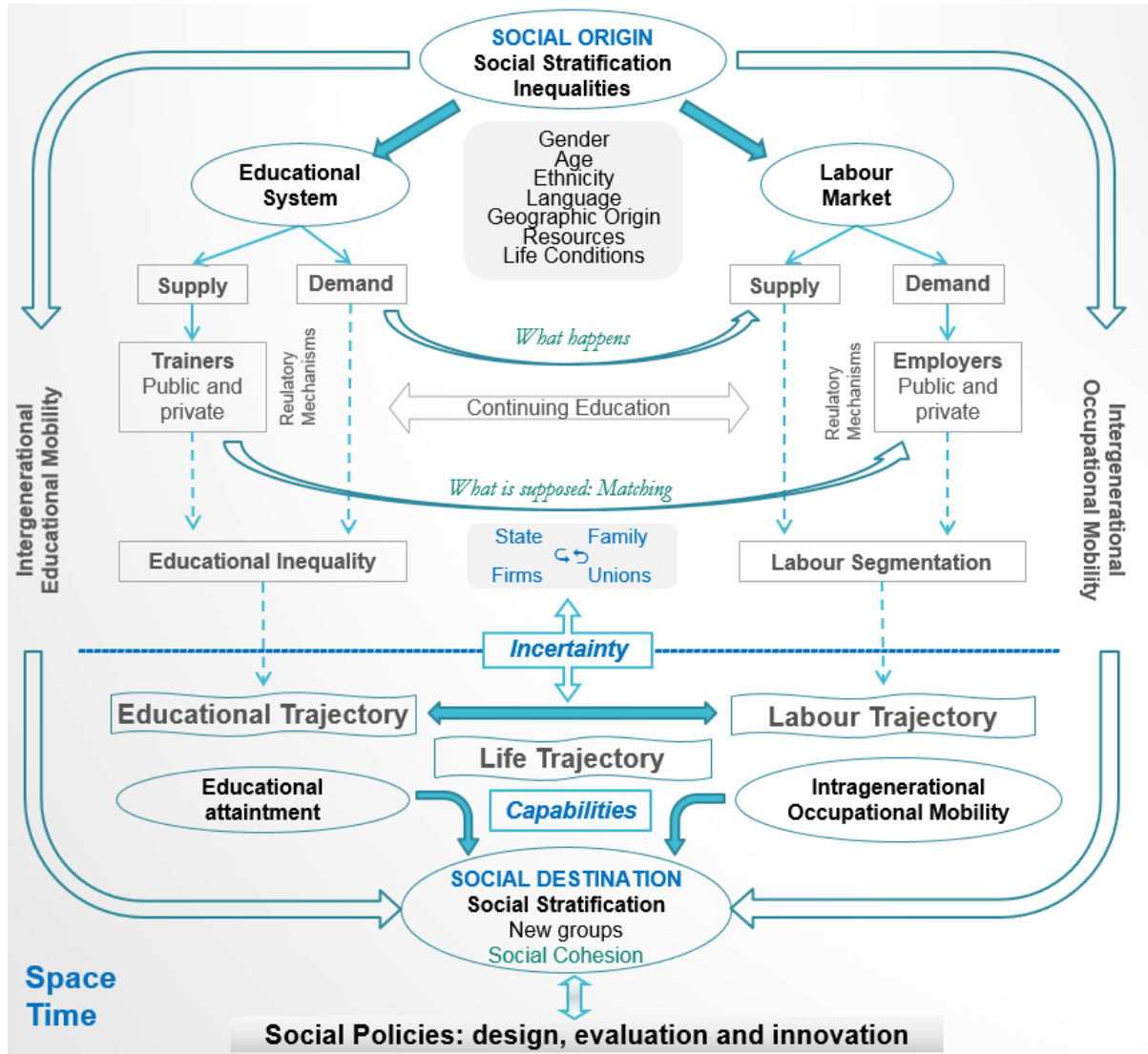
Each thematic axis is coordinated by one or two Principal Responsible Investigators (PRIs) from a European university (Beneficiaries) and from a Latin-American university (Partners), forming 11 Thematic Research Groups (TRGs). The TRGs are subgroups of the general project that work specifically on each line of research, work collectively, and are responsible for carrying out scientific tasks reflected in each work package. The PRIs of each TRG are responsible for ensuring technical progress for the work package's scientific objectives and for preparing the documentation of the thematic axis for each Annual Conference.

The four pillars are conceived from two points of view: that of existing contributions in the literature and contributions of participating research groups; and that of the contribution that the INCASI network can make to each of the Project's themes. This document, as a Working Paper, compiles all the contributions made during the second year of the project.

The thematic axes that guide this project form the general AMOSIT model (Figure 1), which was conceived to facilitate comparative analysis of social inequalities between Europe and Latin America. The model attempts to establish innovative ways of conceptualizing and analysing social inequalities by placing life, labour and educational trajectories—and the strategies associated with these trajectories—at the centre of the analysis. Considering different social, political, economic and cultural contexts, we aim to extract elements for comparison that contribute to the

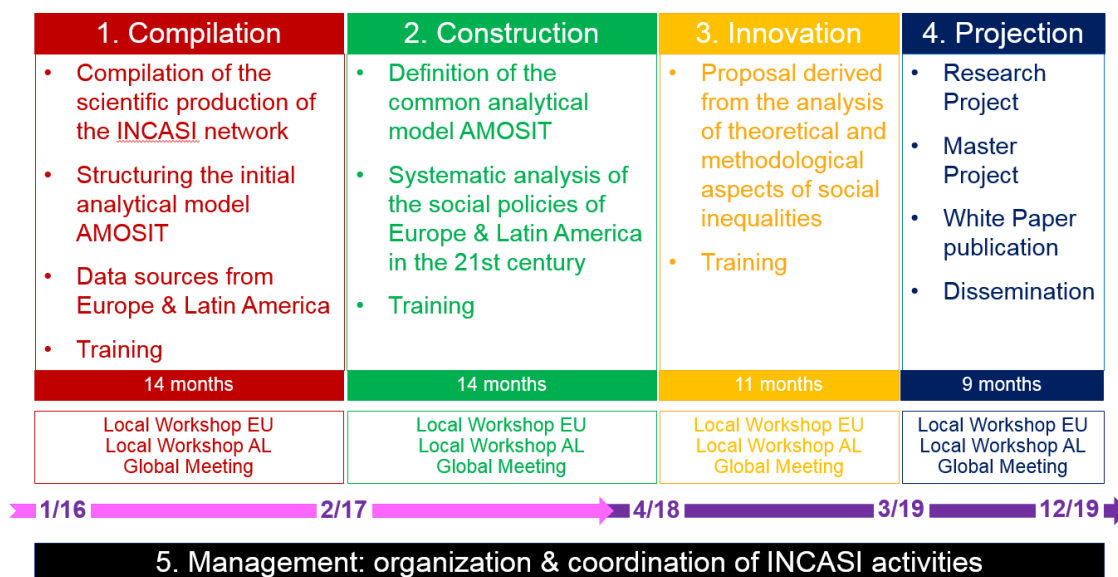
development of innovative methodologies as well as policy recommendations to fight social inequalities and promote social justice.

Figure 1. Analytical Model on Social Inequalities and Trajectories (AMOSIT)



This model, represented as a conceptual map, is a first formulation that seeks to embrace the perspectives and experiences of the entire participating network. The model allows us to question the social mechanisms that come into play when people face situations of uncertainty, the patterns of behaviour that are observed and the factors that explain them. The current social reality offers a scenario for new behavioural patterns in the areas of labour, education and life, constituting an under-researched area in which the new dynamics of structuring social inequalities are developed. It is an initial proposal that will be defined and redefined during the project at each stage of four sequential work packages: Compilation, Construction, Innovation, and Projection (Figure 2).

Figure 2. Stages of the project (Work Packages)



This Working Paper corresponds to the second work package: Construction. As a result of this period, we reached a consensus on defining a common research perspective according to the proposed AMOSIT model. Based on this model, with the contribution of several groups we are defining a general framework in which we seek to establish and operationalize an analytical model. This model emphasizes longitudinal analysis and life trajectories from a multidimensional perspective of social life as the articulation of work, education and the life cycle that are involve in the socio-political and cultural realities of Europe and Latin America. We propose the coherent delivery of an innovative methodology with a mixed-methods research design that combines qualitative and quantitative techniques. The next stage of innovation will structure our innovative proposal. Thus, the culmination of the activities in this work package will lead to the construction of the AMOSIT model as an analytical framework for reflection that systemizes knowledge, taken from the analysis of inequalities from a comparative perspective as a basis for innovation in research in this field, and for introducing new elements that could orient social policies, an aspect that will be looked at in greater depth in the following two stages.

Our work process consists in taking into account all contributions made in each secondment during this period. We analyse and synthesize all relevant theoretical and methodological contributions in order to construct this model of analysis. In this second Working Paper, we present the results of 50 secondments. The following table (Table 3) summarizes the distribution of all research reports drafted in each secondment among the various thematic axes. Each research report may deal with more than one topic, so the total of thematic contributions is 196.

Table 3. Distribution of the research reports by thematic axes

Thematic axis	Thematic contributions
	n
PILLAR 1: substantive background and explanatory models of social inequalities	
1 Inequalities in the labour market and labor trajectories	19
2 Asymmetries in the relationship between training and employment	8
3 Inequalities in work and family life	19
4 Educational inequalities	14
5 Geographical and social inequalities, ethnicity and language	6
6 Social inequalities, migration and space	8
7 Uncertainty, strategies, resources and capabilities	12
8 Inequality of opportunity: intergenerational social mobility	16
TRANSVERSAL PILLARS	
9 Pillar 2: Methodology for the analysis of social inequalities	38
10 Pillar 3: Social policies to counteract social inequalities	27
11 Pillar 4: Gender inequalities	29
Total	196
	Thematic contributions No. of secondments
	50

During the scientific conference of the Second Global Meeting (Barcelona, 28 February to 3 March 2018), we compiled and summarized all partial activities and products derived from the exchanges until January 2018, and presented and discussed the main theoretical and methodological contributions, systemizing a common comparative perspective for the analysis of inequalities.

In this Working Paper we will present a summary of each contribution in each TRG and the substantive contributions that they have made in this period. Table 4 and Table 5 summarize several issues related to these contributions in order to assess all contributions from the viewpoint of each TRG. The following 11 sections of this document outline the main substantive contributions extracted from the research reports of each secondment conducted during the period February 2017 to January 2018.

In the following stages, this task of gathering and synthesizing will continue, contributions will increase, and an increasingly complete and well-defined theoretical-methodological model will be built. The new contributions will incorporate the AMOSIT model that is being built. The final task of building the AMOSIT model will be carried out in Work Package 3, Innovation, from May 2018 to March 2019. At the end of the project, the construction of the AMOSIT model through the different TRGs will result in the White Paper proposed in the project.

Finally, we would like to state that during the time that has elapsed in the project, multiple scientific and dissemination activities have contributed to the debate and reflection on the subject of social inequalities and the AMOSIT model. Part of this work is generating various publications as products derived from the work of the network that can be consulted on the project's website (<http://incasi.uab.es/en>).

Table 4. Distribution of contributions by item of assessment. Absolutes.

TRG	Contributions n	CONTRIBUTE KNOWLEDGE-SUBSTANTIVE			EXPLICITATION THEORETICAL FRAMEWORK			METHODOLOGY APPLIED			POLICY IS CENTRAL			GENDER IS CENTRAL					COMPARATIVE ANALYSIS AL-EU	ANALYZED EMPIRICAL RESULTS			RELEVANCE TO THE AXIS			REPORT PRESENTED		
		Yes	Limited	No	Yes	Limited	No	QUAN	QUAL	MIX	It is central in work plan	It is a variable among others	Reflection on derivations-impact of policies	Rethinking priorities and results of the research	Formulate research questions	Reinter-pret concepts and theories	Analyze according to sex	Analyze according to gender	Analyze factors that intersect sex/gender	Yes	Yes	Limited	No	Yes	Yes	Limited	No	
1	19	14	3	2	15	2	1	14	3	2	2	7	10	0	7	2	9	5	8	9	14	3	2	19	12	5	2	
2	4	4	0	0	1	3	0	2	0	0	2	2	1	0	2	1	2	1	0	3	2	2	0	4	4	0	0	
3	19	15	4	0	19	0	0	3	12	4	7	5	5	5	7	6	2	6	5	5	11	7	0	19	16	3	0	
4	8	8	0	0	8	0	0	2	2	4	5	4	6	7	8	8	4	3	4	5	5	3	0	8	8	0	0	
5	6	4	2	0	3	3	0	1	2	3	1	3	0	2	6	4	1	0	0	2	2	4	0	4	3	0	3	
6	8	8	0	0	8	0	0	2	2	4	0	5	3	0	0	4	4	0	0	0	3	5	0	6	8	0	0	
7	12	0	12	0	7	5	0	1	3	8	3	8	1	3	5	3	0	0	1	9	7	5	0	9	12	0	0	
8	16	11	5	0	15	1	0	11	3	2	12	2	0	12	2	0	0	0	0	11	12	2	2	14	9	5	2	
9	38	35	2	1	33	4	1	18	9	11	12	5	3	5	6	8	6	6	8	16	30	6	2	36	32	3	3	
10	27	7	7	13	9	6	12	9	5	2	7	3	1	0	0	0	0	0	4	7	9	11	16	14	2	11		
11	29	22	7	0	22	7	0	11	10	4	7	6	1	13	7	11	8	4	13	18	15	9	5	29	25	2	2	
Total	186	128	42	16	140	31	14	74	51	44	58	50	31	47	50	43	36	29	39	82	108	55	22	164	143	20	23	

Table 5. Distribution of contributions by item of assessment. Percentages.

TRG	Contributions n	CONTRIBUTE KNOWLEDGE-SUBSTANTIVE			EXPLICITATION THEORETICAL FRAMEWORK			METHODOLOGY APPLIED			POLICY IS CENTRAL			GENDER IS CENTRAL					COMPARATIVE ANALYSIS AL-EU	ANALYZED EMPIRICAL RESULTS			RELEVANCE TO THE AXIS			REPORT PRESENTED		
		Yes	Limited	No	Yes	Limited	No	QUAN	QUAL	MIX	It is central in work plan	It is a variable among others	Reflection on derivations-impact of policies	Rethinking priorities and results of the research	Formulate research questions	Reinter-pret concepts and theories	Analyze according to sex	Analyze according to gender	Analyze factors that intersect sex/gender	Yes	Yes	Limited	No	Yes	Yes	Limited	No	
1	19	74	26	79	16	74	16	11	11	37	53	0	37	11	47	26	42	47	74	26	100	63	37					
2	4 of 8	100	0	25	75	50	0	0	50	50	25	0	50	25	50	25	0	75	50	50	100	100	0					
3	19	79	21	100	0	16	63	21	37	26	26	26	26	37	32	11	32	26	26	58	37	100	84	16				
4	8 of 14	100	0	100	0	25	25	50	63	50	75	88	100	100	50	38	50	63	63	63	38	100	100	0				
5	6	67	33	50	50	17	33	50	17	50	0	33	100	67	17	0	0	33	33	67	67	50	50					
6	8	100	0	100	0	25	25	50	0	63	38	0	0	0	50	50	0	0	38	63	75	100	0					
7	12	0	100	58	42	8	25	67	25	67	8	25	42	25	0	0	8	75	58	42	75	100	0					
8	16	69	31	94	6	69	19	13	75	13	0	75	13	0	0	0	0	69	75	25	88	56	44					
9	38	92	8	87	13	47	24	29	32	13	8	13	16	21	16	16	21	42	79	21	95	84	16					
10	27	26	74	33	67	33	19	7	26	11	4	0	0	0	0	0	0	15	26	74	59	52	48					
11	29	76	24	76	24	38	34	14	24	21	3	45	24	38	28	14	45	62	52	48	100	86	14					
Total	186	105	37	16	116	27	14	59	46	38	39	42	24	28	38	34	30	25	35	63	89	48	20	138	122	15	21	
		69	31	75	24	40	27	24	31	27	17	25	27	23	19	16	21	44	58	41	88	77	23					

2. Thematic Axis 1: Inequalities in the labour market and labour trajectories

2.1. Substantive contributions

All contributions have a good coherence with the Thematic axis 1, on both its dimensions: inequalities in the labour market and labour trajectories. The topics deal with sub-contract homework, outsourcing of services, trajectories of youth work and child labour, graduate's trajectories in the labour market and active labour market policies. Some contributions reaffirm the importance of segmented labour markets, social origin, social security systems and gender inequality in the reproduction of social inequalities. In each case, the segmentation of the labour market seems to constitute itself into a robust factor when explaining said process, whatever the national context addressed by these studies (Spain, Italy, Argentina). Either way, it is appropriate to highlight that when talking about Spain and Italy, we are referencing Southern European economies that differentiate themselves from the rest of Europe; and when we are discussing Argentina, its socio-economic and political-institutional structure has been, historically, very similar to the societies previously mentioned. In any case, the similarities between these three systems must be qualified taking into consideration the fact that Argentina has a secondary segment/informal sector much more vast and impoverished than that of Spanish or Italian society.

In this sense, it should be reiterated once more the importance, when we are making comparative studies about segmentation/employment quality, to consider the structuring role that the productive sectors within each social formation have, in terms of their productivity differentials and economic-technological integration. In particular, it is relevant to incorporate the perspective of Structural Heterogeneity when considering the centrality of the productive sector of the economy that determines the segmented characteristics of insertion in the labour market. On the other hand, to deal with the specificities of informal work, so widespread and visible in Latin America, and much less important and hidden in the Europe.

Another relevant aspect is to compare the class structure and its link with structural heterogeneity, labour segmentation and welfare regimes. This vision is also interesting to complement it with an explanatory perspective of the regulatory and institutional elements and, in a more general sense, employment models.

One aspect less addressed in the AMOSIT model and of central importance in relation to labour insertion and promotion processes is the concept of social capital. Specifically, a contribution has been made more related to the literature on the status attainment, a theme halfway between this axis 1 and the social mobility axis 8.

The reality of the labour market has a clear link with socioeconomic conditions. In this sense, another contribution of interest focuses on the issue of multidimensional measurement of poverty with an alternative proposal for the Argentine case where, being important the labour-employment dimension, is not the centre of concern. However, the dimensioning of poverty based on the double axis welfare-social rights is a relevant contribution to the analysis of societal inequalities.

Regarding the transversal pillars there is evidence of the dimension of Gender Inequalities and Social Policies, and also interesting results on the methodology: quantitative methods (e.g. statistical tools to follow the trajectories of graduates in the labour market and the socio-demographic differences between cohorts); mix-methods and qualitative/ethnographic methods. On the other hand, the comparative perspective is present in 43% of contributions.

The progress of projects is variable, ranging from research ideas to papers, to completed articles and in the publication phase. In some cases, it is therefore not always possible to show the real contribution to the AMOSIT model.

The contributions of this second Work Package can be summarized in the following table:

Structure (centrality of economic structure)	Agency	Social norms (social origin, class)	Work Trajectories (as mechanism to explain social dynamics)	Regulations and Institutions
Labour market Inequalities and segmentation in (Spain- Italy - Argentina)	Activation of active labour market policies at EU level and Spain	Intergenerational social mobility in Argentina and Spain	Labour Market trajectories of graduates in Spain	Pension Reforms in Italy and Argentina
Evolution of urban poverty in Argentina	Action and collective bargaining to face outsourcing and sub-contracted work (Chile and Europe)	Educational credentials as a factor of social mobility in LA	Vulnerable labour market trajectories of youths in Argentina	
Income dynamics and social position of micro-entrepreneurs in the UK and Argentina		Incidence of social capital and socio-economic inequalities (Chile and Uruguay)		
Evolution of social structure in different economies (Argentina and the UK)				
The measurement of social structure (Gran Buenos Aires)				

In terms of research advances, as we have seen, the prevalence of comparative studies focused on the (economic) structure and social norms, which affect inequality in the labour market, is confirmed, although many studies are still in an embryonic phase.

The comparative aspect, although not systematically used, sheds more light on the structural differences between the two continents, but also shows some similar aspects of socio-economic division of labour (e.g. similar labour market segmentation patterns exist in Argentina, Spain and Italy, even if the size of the groups differs, and some peculiarities (such as informality of work) play a relevant role.

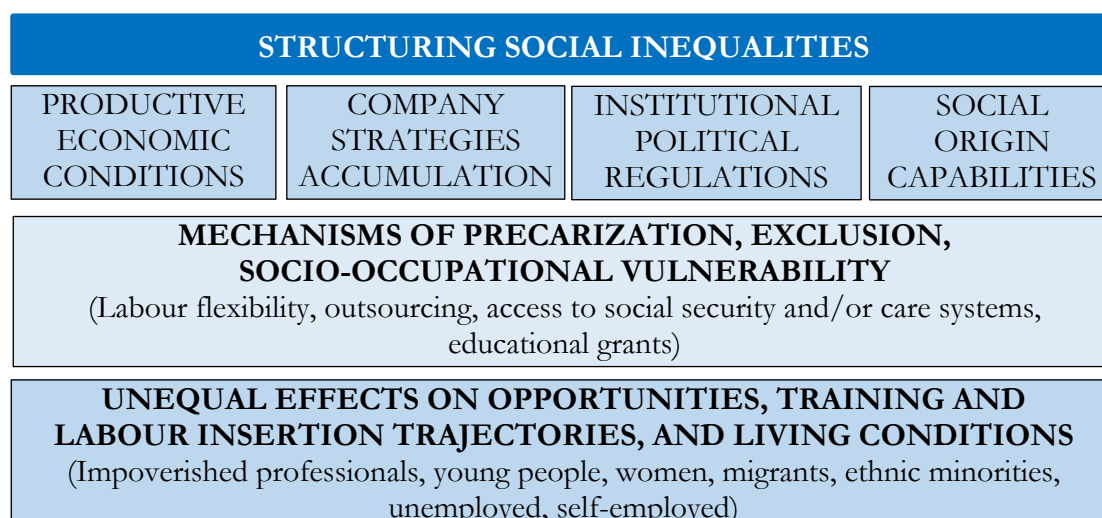
Unlike the first year, studies are less focused on problematic conditions related to specific population groups, but consider the evolution of the labour market structure, in terms of segmentation, income dynamics, poverty, role of educational attainment, intergenerational social mobility. Consequently, many of the research contributions are based on quantitative and longitudinal analysis and less on quantitative methods.

Interesting results come from the agency area, that is to say the comparative studies between Europe and Latin America of the strategies, actions and reactions of the collective actors, both traditional and new, aimed at support and work regulation, in increasing liberalized economies.

The explanatory model that emerge can be summarized in terms of three main aspects:

Explanatory Model	
Structures of division of labour	Socio-economic segmentation, Labour market polarization, Welfare and social security exclusion, unequal distribution of opportunities (gender, ethnic, generations), informal work
Reproduced through Mechanisms of	Precarization, outsourcing, subcontracts, work flexibility and fragmentation
Producing effects of	Social vulnerability and marginality, expulsions, devaluation of educational attainments, unemployment and underemployment, middle-class impoverishment

That links with conceptual framework that was schematically presented in the first working paper during the first Work Package:



2.2. Summaries of reports

Comparative analysis of the labour market segmentation (Spain, Italy, Argentina)

The aim of this study is to build a general and structural segmentation model in order to analyse social inequalities in the labour market and compare a typology of positions between Spain and Argentina. The model is based on different theoretical contributions of the “segmentation perspective”, developed from (neo)institutionalists’, marxists’ and the Cambridge School’s contributions. In addition, the Structural Heterogeneity perspective is taken into account. According to this perspective, the general hypothesis establishes that there is not a single labour market that fits supply and demand, on the contrary, several segments can be differentiated which establish hierarchical positions in labour market in correspondence with certain supply profiles as gender, age, immigration or education. It is expected that a similar structure of the labour market exists in Spain and Argentina, but with the specificities and singularities of each society.

For the operationalization of the model, the salaried population is analysed, and five main dimensions are taken into account to characterise the labour market: stability in employment, qualification, company characterization, wage and supply characteristics (gender, age, nationality and education). In the analysis, a combination of techniques of multivariate analysis is applied (Multiple Correspondence Analysis and Cluster Analysis) in order to build a typology that will allow the comparison of different labour markets.

The analysis shows the following results/conclusions: with different levels of development, socio-economic and historical realities, Argentina, Spain and Italy, share the same structure in terms of segmentation, however, with different magnitudes and specific elements such as the crisis in Spain, the subsegments, the informality in Argentina, among others. Particularly in Argentina, a low composition of university graduates can be observed in the secondary segment of the labour market, with only 1%, whereas in Spain and Italy it’s 10%.

The gender variable is not relevant to the study. The possibility to continue this research path is analysed, with a longitudinal approach. The authors’ intention is to lay the groundwork for future research studies with a comparative perspective, widening the amount of countries analysed.

Comparative pension reforms. Italy and Argentina in their regional contexts.

The object of this study is the understanding of the reforms of pension systems in Italy and Argentina, taking into account their regional contexts. The theoretical approach draws from the political literature of Esping-Andersen. The general framework for the comparison is the existence of a strong neocorporatism origin in the design of both the Italian and the Argentinian pension systems. The definition of “Southern European welfare regimes” by Ferrara and its application to Latin America by Barba Solano will also be used. In depth interviews were done, statistical data from both countries was analysed as well as secondary sources. It is mentioned, among the empirical findings, focusing on the Argentinian case, the passage to the public system and the inclusion of women and informal workers to the social security system; in the Italian case, a contributive system has been adopted. The differences between both countries are huge, especially when taking into account the level of benefits from pensions, however it is interesting to note how the theoretical framework and the biases generated by the welfare model of Southern Europe can also be applied to Latin America. It is expected that this paper will provide some evidence in terms of its impact on gender equality, as both the reforms have affected the role of women after retirement.

Comparative analysis of the intergenerational social mobility in Argentina and Spain.

The general objective of this study is to start to study intergenerational social mobility in comparative terms between Argentina and Spain (and Latin America and the European Union). Inputs made by Erikson & Goldthorpe (1993), Breen (2004) and Ishida & Miwa (2011) are the basis of the theoretical background used in this paper, as well as Argentine and Spanish literature. The hypothesis that arises is that even with a distinctive historical timing of their process of development, Argentina and Spain have similar patterns of social mobility. When doing an international and contextual analysis, three clusters of countries with different structure of social classes can be distinguished: developed countries with high level of service occupations, countries as Spain having high proportions of non-manual and skill workers, and countries as Argentina with high rate of independent and unskilled workers. In addition, Argentina and Spain show high and similar rates of absolute social mobility, around 70%. When absolute mobility is controlled, a constant association over cohorts is observed, both in Argentina and Spain. These similar results are independent of economic and political history, levels of development or inequality. It can be noted that social fluidity is observed mainly for women.

Even though this is a work in progress the hypothesis can be validated: even with a distinctive historical timing of their process of development, as late industrialization countries, Argentina and Spain have similar patterns of social mobility.

Inequality and segmentation in the labour market in Spain and Argentina.

The aim of this study was to build a general segmentation model to analyse the existing social inequalities in the labour market and compare a typology of positions or employment segments between Spain and Argentina. The AMOSIT model is considered as the initial and provisional model of analysis, added to the conceptualization of the labour market segmentation based on the segmentation perspective or theory following the works of Fernández-Huerta (2010; 2012), Leontardi (1998), Ruberty (2007) and Sánchez-Lopez (2008). The objective is to validate the hypothesis in which the inequality mechanisms that operate in the structuring of the labour market in Spain and in Argentina, with the particular singularities of each society, are similar and are reflected in the same pattern of labour market segmentation, that is, the triad of lower and upper primary sector and the secondary sector. Twelve variables were taken into consideration, data collected via the same methods in Spain and Argentina in 2014. A structural and articulated typological construction methodology was used where two multivariable analysis techniques are combined: factorial analysis (multiple correspondence analysis) and classification analysis (Ward's hierarchical clustering method).

The author concludes that there is a common general pattern of structuring of the Spanish and Argentinian labour market in terms of segmentation. The configuration of the triad is verified, with a not very different percentage distribution. Both segmentation typologies, the Spanish and the Argentinian, are the relative expression of the labour realities of each territory, but they reflect a similar internal distribution, and this is a result that does not prevent to also account for the structural productive and occupational differences of both countries.

Effect on income of education levels controlled by structural heterogeneity

The effect on income generated by the different levels of education, controlled by dimensions that account for structural heterogeneity and explain the productive structure of the labour market in Latin America, was examined. In this sense, the approaches discuss the limitations of the current

AMOSIT model to account for inequalities in the Latin American context. They also discuss the role of educational credentials as a factor of occupational mobility in the context of a segmented labour market such as Latin America. The use of a quantitative methodology is highlighted, where Mincerian linear regression equations were applied introducing variables of structural heterogeneity, which is novel in studies of this type. Structural heterogeneity was operationalized depending on the sectoral insertion in large, small or micro economic units in the public or private sector of employment and the salaried or non-salaried nature of the labour force. The results of the research suggest revising the employment policies focused on the educational or professional training of the labour force in light of structural factors that operate from the demand and not from the job offer. It would seem that these factors determine the quality of jobs and levels of income of the workforce.

Incidence of social capital in the explanation of occupational attainment

The relationship between inequality in social capital and socioeconomic inequality (measured through the status of origin and education) is analysed, evaluating the importance added by social capital to the achievement of status and studying what mechanisms relate the former to the latter. Chile and Uruguay are compared. Following the Lin's social capital perspective, it is established as a hypothesis that the assets of social capital that subjects have generate specific effects on occupational attainments and, therefore, on social inequality. Two surveys are compared: in the case of Chile the Encuesta Nacional de Estratificación Social (ENES) of 2009, with 6153 cases, and for the case of Uruguay, the Encuesta sobre Movilidad Ocupacional y Trayectorias Educativas (EMOTE), applied between 2010 and 2012, with 3143 cases, in three cities of Uruguay (Montevideo, Salto, and Maldonado). First results of the analysis are presented that still do not lead to definitive conclusions about the added weight that social capital would have.

Evolution of poverty in Argentina between 2010 and 2016 from a multidimensional social perspective.

A chapter is presented in the context of the thesis on “The construction of the Multidimensional Poverty Matrix. An approach based on the intersection between the space of well-being and that of social rights”. Following the concept of social debt, the measurement of urban poverty in Argentina is approached from a new multidimensional perspective in relation to the notion of well-being, complementing both the agency capacity that provides income and the effective fulfillment of a set of social rights. As a general hypothesis, it is considered that taking into account a set of deprivation dimensions beyond household income would not only contribute to broadening the content validity of the concept of poverty but would also be a useful tool as a qualifying element to establish patterns of poverty. specific deprivation that in turn imply different levels of reproduction of situations of poverty. The general objective is to build different poverty indexes based on different methodologies and analyse which ones correlate better with different aspects associated with subjective well-being (economic and psychological). A measure of multidimensional poverty is tested for Argentina, period 2010-2014, called “Multidimensional Poverty Matrix from a rights approach”, applying the methodology developed by the Consejo Nacional de Evaluación de la Política de Desarrollo Social de México (CONEVAL, 2009). Up to now, progress has been made with the construction of one of the measurement indices that is inspired by the index applied by CONEVAL (Mexico). Operationally, a matrix construction is proposed that, rather than summarizing the phenomenon in one figure, seeks to generate a typology that contemplates different situations that are qualitatively heterogeneous depending on the situation, under different spaces of deprivation.

As a result, we observe the presence of two different trends during the period in terms of the evolution of multidimensional poverty. It is observed, on the one hand, a fall of the same between the years 2010 and 2011. However, starting in 2012, poverty will grow steadily until 2014, drawing a "U", reaching in this way more or less the initial values of the series, stabilizing towards 2015. To a large extent, this evolution would be explained fundamentally by the behavior of income. It remains pending not only the construction of different models to compare these results, but also the improvement of the current one from the inclusion of the information dimension, the updating of data and some reformulations of indicators that are being analysed. The construction of typologies that take into account qualitatively the different dimensions of deprivation that allows more complex analysis is also pending.

Occupational classes, regions and women in Argentina in the first decades of the 21st century

This contribution worked mainly in the formal/informal differentiation, and the characteristics of the microentrepreneurs based in Great Britain, of migrant characteristics, and located in certain specific branches of the economy. Feminine ethnic bonds and the low probability of access to higher incomes in salaried form are confirmed. Social heterogeneity was compared when observing income and protection of self-employed work and British microentrepreneurs in relation to the same conditions in Argentina. A quantitative approach is carried out through the survey of the "Panel Study of Income Dynamics (ISR)", and its comparison with the survey of the Programa de Investigación de la Sociedad Argentina Contemporánea (PISAC) in relation to the analysis of survey form, characteristics of the sample and the most important variables of the study, without results of a comparative analysis.

Comparative study of the class structure in the United Kingdom and Argentina

Potentialities and possible comparisons between work processes and social mobility in Argentina and the United Kingdom were analysed, sharing similarities, differences, problems of theoretical conceptualizations, etc. in relation to the concepts of dual markets, structural heterogeneity or welfare regimes. The objective is to obtain a comparative characterization of the link between the processes of evolution of the class structure in both countries and to make a substantive contribution to the AMOSIT model from a dynamic and comparative perspective of inequality. In pursuit of this objective, the indicators were systematized, and the EGP scheme was built for both countries to account for the comparative study of the class structure, paying particular attention to its evolution and the relationship of this process with different accumulation models. In this way, it is intended to analyse the class structure focusing from a relational view of social classes, in which economic aspects and institutional political aspects that shape the stratification processes come together. The results of the comparative analysis, where EPH and QLFS will be used, are not yet presented.

The measurement of the socio-occupational structure based on deductive and inductive logics. Study for the case of the Gran Buenos Aires Agglomerate (Argentina) in 2016

The work done deals with inequalities in the labour market and in the labour trajectories from the analysis of different ways of measuring the social structure. It is proposed to contribute to the debate on the measurement of the socio-occupational structure by putting into dialogue two forms of social approach and classification: on the one hand, based on a classification proposal based on the theoretical-methodological perspective of Susana Torrado considered classical in the studies

on this field; and, on the other hand, through the exploration of occupational data and the construction of clusters from variables considered theoretically relevant and using multivariate analysis techniques. The techniques of multiple correspondence and classification analysis are applied, taking as a case the Gran Buenos Aires Agglomerate in 2016, and its pertinence for the study of the socio-occupational structure is verified, as they allow us to measure the weight of the distinctions existing in a population and the distances between socio-occupational groupings in a specific context.

Broadly speaking, both forms of measurement consider the category of occupation as the predominant dimension. However, from the multivariate analysis emerges the issue of informality and the size of the establishment as strong features that delimit the existing divisions in the socio-occupational structure of the AGBA. At the same time, the existence of various levels of differentiation in the social structure is notable, where certain groupings are clearer in their identification: employers and managers, domestic servants and self-employed workers and others whose limits have a more diffuse character: workers/employees with different levels of qualification and formality of employment. The incorporation of these multivariate analysis techniques allows us to break down the configuration of the socio-occupational structure based on the exploration, recovery and visibility of differences, distances, limits and hierarchies between groups, providing elements and tools for the discussion of the measurement of this phenomenon.

Work at home, the last link in the chains of neoliberal production in Chile

Way of precarious work of women, which is long-standing. The central question aims to identify and interpret what are, and how they operate, the forms of control and resistance of home-based workers in the manufacturing sector, linked to large companies, in neoliberal Chile. It is part of strategies of fragmentation and productive deconcentration that companies adopt and that involve transfer of risks and production costs to workers. Home work is considered as a condition of competitiveness for companies. External production would reduce internal costs and increase the capacity to respond to changes in demand.

We can recognize new configurations of this way of working that are far from more traditional visions that associate work at home with precarious and informal work carried out preferably by poorly qualified women. The research shows in Chile, the persistence of precarious conditions such as low wages, intense work hours, informality, social vulnerability, and even child labour. Moreover, the labour market does not operate impartially against gender, but rather reproduces cultural patterns that segregate women to certain sectors and types of work. Homework constitutes the last and most precarious link in the productive chain, it is a commonly informal, temporary link with no social protection.

The workers interviewed mostly work without a contract; in some cases they appear as service providers, and not as workers; your links to the employer or who requests the "service" are not stable; their wages are by piecework and do not exceed the minimum income. One of the consequences of this informality, and for which there is a lot of concern on the part of the workers, are the difficulties of accessing health and future social protection. The methodology used is basically qualitative, through the use of in-depth interviews and observation in workshops and homes.

Taking care of care givers. Mutual care among workers in feminist organizations

Analysis of labour organization within two feminist non-profit organizations that take care of battered women. Firstly, it presents fieldwork, trying to show how feminism can influence labour organization and how the two structures came to participative management, without hierarchy. Then it focuses on mutual care among the employees, and particularly about how this mutual care can provide collective solutions for work-related strain.

One of the hypothesis is that some types of labour organization can provide possibilities to prevent work-related strain or at least help to take care of it. As it implies a discussion culture among the workers group and as it also allows to share responsibilities among workers, non-hierarchical management seemed to possibly offer different ways of dealing with work-related strain. Two research questions guided the paper: how labour organization can reflect the organization's feminist aspect? How the employees themselves, that all claim to be feminists, implement a feminist ethic of care in their labour relations?

The methodology of this research is based on an ethnography within two French feminist organizations that take care of battered women. I have been observing daily work in those two organizations, and I interviewed the employees and the volunteer's members of the board of directors. The ethnography went on for three months in each organization.

In relation to gender studies, those findings are interesting because they allow to think about how a feminist workers group, that question hegemonic labour relationship, can create a specific working environment. In relation to inequalities in work, it helps to see how "real" participative management, where workers have a control on their work, can help to reduce some inequalities within the workers' group.

The occupational trajectories of university graduates. An institutional action plan

The objective of this study is, on the one hand, to create the instruments and procedures that allow the university institution to obtain information from its graduates at the moment of finishing their studies on the degree of satisfaction with the received training, the work situation and the sociodemographic characteristics; as well as, their work trajectories after four years since graduation. On the other hand, perform a comparative analysis between the different careers of the first graduates promotions (courses 2014-15 and 2015-16) focusing on the starting situation towards the working world. This analysis aims to investigate the unequal labour insertion taking into account an intergenerational and gender perspective.

Overall, these results offer important impacts: having indicators of the degree of academic satisfaction of the graduates gives the opportunity to know the weaknesses and strengths of the training received, enabling a space for reflection and, consequently, improvement of the quality of it, have indicators on the degree of labour insertion of students at the end of studies and the relationship of studies with work. Carrying out the follow-up of the graduates gives rise to know the possible transformations in the labour insertion of the same ones, as well as, to advance in the knowledge on the nexus between the university formation and the labour world.

From childhood to youth: vulnerable, unequal biographical trajectories persistent in Argentina of post-convertibility

The meaning and consequences of child labour depend on the social context in which it occurs- social class, ethnic group, rural or urban environment, etc.-. Therefore, in order to understand

what is happening and how it is best dealt with, we must look closely at the network of social relationships in which these childish efforts take place. An important proportion of studies that analyse the group of children and young people who are in the street (living and/or working) take as an analytical horizon the perspective of social exclusion, as a theoretical device capable of accounting for vulnerability processes and social fragilization. In this research we seek to reveal - through the analysis of biographical trajectories- the heterogeneous ways in which new generations inhabit a section of the course of life: childhood and youth. The study is based on mixed methods. The sequential mixed design is based on quantitative and qualitative strategies, refers specifically to a proposal of inquiry that addresses the object of study in different phases (two) where the methodological strategies are integrated: data that we use in this analysis comes from a research on children, adolescents and young people working in the streets that took place in the city of La Plata, between 2014 and 2016. The study was proposed to map street work -to know its dimensions and characteristics- and delineate the biographical trajectories of the subjects involved in that activity.

There are three types of itinerary: controlled trajectories, inertial and limit, which are related to the weight factors that drive the social action of these young people. Elements that configure vulnerable (but) heterogeneous paths: To explain the ways of producing childhood and youth in modern times, the perspective of the life course is a powerful tool, while the trajectory and temporality allow observing the future in the time of the lives of the subjects and the mechanisms of unequal appropriation of resources (material, affective and symbolic) that explain the fixation and accumulation of social disadvantages.

Active employment policies and activation in the European Union and Spain

The content of the active policies within the framework of the knowledge society sponsored by the organs of the European Union is described. It describes and analyses the effects of a conception of activation that assumes responsibility to individuals of their employment situations, while disregarding them to public institutions.

Local employment policies and their relation to social cohesion and the concretion in the European Union and in Spain. The importance that the European Union devotes to local (active) employment policies is monitored. The aspects that make it possible to affirm that, theoretically and practically, the local area is an adequate space to advance in the welfare and in the social cohesion of the inhabitants of a delimited territory, specifying what type of territory is characterized as local. Studies and data on specific local policies are presented and, finally, some of its most controversial aspects are debated and/or criticized.

The regulation of employment conditions in outsourced service companies: the case of the EU and Chile

It is about describing, and analysing experiences carried out in countries of the EU and in Chile that, from legislative action or, above all, from action and collective bargaining, act to improve the employment conditions of workers of subcontracted companies who provide services. The starting premise is that the subcontracted companies offer conditions of employment of much lower quality than those that originate in the company that originates and orders the subcontracting. At the same time, we start from the idea that in Chile the characteristics of collective bargaining and union action make it difficult to regulate those conditions. This, together with the neoliberal imprint of government policies, contributes to the outsourcing of services tending to the precariousness of the employment situations of those employed in this type of

activity. A theoretical framework that frames the development of subcontracting practices is proposed. This study deals with the analysis of actions of political-legislative and union regulation of subcontracting in the EU and the political-legislative and union regulation actions of subcontracting in Chile.

3. Thematic Axis 2: Asymmetries in the relationship between training and employment

3.1. Substantive contributions

Several topics were dealt with in the secondments of this TRG, as summarized below. At the theoretical level, the validity of labour market segmentation theories is discussed, with unorthodox contributions or a particular vision of Latin America based on the concept of structural heterogeneity of the labour market. There are also theoretical discussions on the concept of welfare, and on the now classical definition of social mobility based on the model of Erikson and Goldthorpe.

Comparative analysis is an essential characteristic of the secondments and of the entire INCASI project. The differences and similarities between countries were seen, for example, in the structures of labour markets, which all show some segmentation, though the importance of the variables involved varies. Similarities were also seen in the intergenerational mobility regimes between Argentina and Spain. Experiences of analysis of university graduates in Chile were explored, in particular at the University of Concepción, and a literature search was performed for experiences at other Chilean universities.

Quantitative techniques are the gold standard for obtaining correlations (with special emphasis on logarithmic regressions) or analyses of variance to explain the differences between countries and the evolution of phenomena related to poverty and transition to work, and to construct indicators for monitoring and evaluating public policies. Some secondments combined quantitative and qualitative analysis of the transition to work of graduates. In the first stage, quantitative methods were used to collect information on the occupational situation of university students just at the time of graduation; in the second stage, both methods were used to analyse the transition to work four years later.

In some secondments, specific monographic studies were carried out, such as the study on transition to work of law graduates from a Catalan university, which addresses the transition to work of university graduates when they finish their degree, their work expectations, factors of academic satisfaction, professional practices and student mobility. In addition, it includes broad sociodemographic information on the educational level and employment situation of parents, therefore touching on those axes. A career monitoring programme was set up for graduates at the institutional level, and the five models of analysis created for the project were revised in order to develop a typology.

Some secondments focused on the political dimension, intervention in the labour market and provision of training to the unemployed population. One secondment made a critical review of “active” employment policies in the context of the European Union as a paradigm of the “knowledge society”, in which the centrality of training as a way of activating individuals makes them, instead of institutions, chiefly responsible for their situation in the market. The local dimension appears to be the most suitable for implementing active policies in favour of social

cohesion, despite conceptual and budgetary shortcomings. Another secondment focused on social policies, which can increase welfare but at the same time lead to more inequality.

Some secondments articulate the analysis of the distribution of social opportunities (due to public policies or the action of educational institutions) with personal and family mobility strategies. These strategies combine the mobilization of resources (capital of different kinds: material and symbolic) to ensure successful youth transitions, but also take into account the perceptions of adolescents and young people regarding their trajectories.

3.2. Summaries of reports

As a summary and conclusion of this TRG, the secondments carried out addressed several issues in the field of asymmetries between the education system and the labour market. As the essence of the INCASI project and the AMOSIT model, comparison was used specially to study intergenerational mobility and the transition to work of university graduates. The majority of the secondments were structural, seeking relationships between these social phenomena and social and institutional inequalities, although some addressed the role of individuals and their strategies in the transition pathways from training to work. Quantitative techniques were used to analyse these phenomena, and in a few cases qualitative techniques were used to complement the quantitative techniques. Most secondments applied a broad perspective to the object of study and to the databases used to compare countries and to compare the historical and macrostructural evolution of the phenomena studied. In some secondments more, specific studies dealt with a university degree or a specific reference group. The political dimension was also analysed, more with regard to the labour market than to education systems, though training mechanisms for employment activation were also addressed. Finally, the points for the debate are highlighted: 1) To what extent is there a theoretical renewal regarding the segmentation of the labour market, or does it still depend on an antithetical relationship with the theories of human capital? 2) As an analytical method, does the comparative method allow structural or global elements to be established, and where do we locate the “societal”, idiosyncratic or historical elements?

4. Thematic Axis 3: Inequalities in work and family life

4.1. Substantive contributions

The works that fall within this axis deal with the understanding, measurement and explanation of various specific issues that have in common the interrelated perspective of the public sphere, the labour market, family, and reproductive times and activities in general. In particular, they analyse the implications of the relationship between family, market and the state.

1. Gender division of labour (productive and reproductive work), reproduction and participation in the labour market. This area includes studies on the labour market and social protection systems; analysis of precarious work, taking home-based work as an object of analysis; the gender division of labour; women entrepreneurs; and how feminism can influence the organization of work. The perspectives of the studies consider work in a broad sense, over and above employment, taking into account the gender division of labour and its implications for the family, the market and the state.

2. Biographical trajectories of vulnerable children and youth, child labour and household strategies related to youth transitions in the framework of welfare and social policies. These studies deal with the biographical trajectories of children and young people, strategies of households in youth transitions, situations of vulnerability, and child labour. They take into account the interaction between different areas of daily life: education, employment and life projects.
3. Education and inequality. These studies analyse access to higher education and graduation, and evaluate certain socio-educational social programmes that focus on children's rights and on improving their opportunities as citizens. They therefore focus on the relationship between education and social integration.
4. Care and health status, sexual and reproductive health, poverty, criminalization and criminal control, neoliberalism and gender. This thematic area includes studies of poverty from a multidimensional perspective, inequalities in health status and care, sexual and reproductive health, and criminalization and penal control of women. All the studies reflect on the processes of social exclusion, sectors of socioeconomic marginalization and the reproduction of these processes. This area also includes a study that can be considered as a framework for the previous studies, because it reflects on neoliberalism not only as a set of macroeconomic policies but also as a political rationality.

The geographic areas include France, Spain, Brazil, Argentina and Mexico. Macrosocial research focused on the populations of a country, and microsocial research focused on particular social groups located in specific cities or regions.

4.1.1. Gender division of labour (productive and reproductive work), reproduction and participation in the labour market

State, market and family in a comparative perspective. Social policies, work and income in Spain and Argentina

Social policies and working conditions in Argentina and Spain are analysed comparatively, focusing on the social protection systems of the two countries. The transformations in conditionalities and productions regarding the “deservingness” of individuals and groups with regard to social protections are studied. The methodology followed is a combination of qualitative and quantitative analyses. For the qualitative analyses, primary and secondary sources will be used to characterize the fundamental structures of the protection systems of Argentina and Spain. For the quantitative analysis, we will make a comparative characterization of the general processes of labour markets and the dynamics of wage and non-wage income and their distribution in terms of occupational and class strata. We use the Permanent Household Survey of INDEC for Argentina and the Survey of Living Conditions of the National Statistics Institute for Spain.

Home-based work, the last link in the chains of neoliberal production in Chile

This study analyses the precarious work of women in Chile. In particular, it analyses home-based work by women in the current context of flexibility, reorganization of production and work, and an increasingly globalized economy. In particular, it aims to identify and interpret the forms of control and resistance of home-based workers in the manufacturing sector linked to large companies in neoliberal Chile, and how they operate. The methodology used is basically qualitative.

It is carried out through the use of in-depth interviews and observation in workshops and in the homes where the women work.

Feminism and work organization

The work done during the secondment consists of an analysis of the work organization within two non-profit feminist organizations that deal with battered women. In order to show how feminism can influence the organization of work and how organizational structures can lead to participatory management without hierarchy, ethnographic field work is carried out within two French feminist organizations. In relation to gender studies, these findings are interesting because they allow us to think about how a group of feminist workers, who question the hegemonic labour relationship, can create a specific work environment. In relation to inequalities at work, it allows us to glimpse how “real” participatory management, where workers have control over their work, can help reduce some inequalities within the group of workers.

Reproduction and participation of women and men in employment in a context of globalization

The objectives of this secondment are to study, in a context of globalization, the representations on the position of women (and men) required by reproduction and participation in the labour market, and to integrate gender dynamics in the Analytical Model on Social Inequalities and Trajectories (AMOSIT). We perform a Franco-Argentine comparative analysis of: (i) gender policies and the history of women’s and LGBT rights; and (ii) the discursive productions regarding the demands of 8 March 2017, with specific attention to the new media. Within this framework, we analyse the dimensions that make up the gender contract, taking into account, in addition to social policies, the integration of women in the labour market; family structures; the institutionalization of women’s and LGBT rights; the cultural foundation and vision of gender differences; the regulations of the different forms of gender violence; and the interplay between financial, affective and decisional autonomy.

Changes in the gender division of rural work and domestic work, and in women’s political commitment and militancy

The study focuses on the analysis of interrelated inequalities (gender, class, race and sexuality) in rural work and family life, analysing the gender division of labour, including productive and reproductive work, and changes in women’s political commitment and militancy. The fieldwork focuses on rural women and women who work for institutions such as the government, NGOs and universities, using an agro-ecological approach. This means that they have agro-ecological productive practices and an agro-ecological way of life, with social, economic and political forms of organization. The results show that rural labour is mutating towards agro-ecological practices and that women’s production is gaining a new value, which is not necessarily economic but can be global, social and ecological. The production is considered mainly as a capitalist resistance that entails an increase in the political participation of women.

A contextualized and gender-aware framework of women’s entrepreneurship

The author carries out an in-depth analysis of the literature, looking at gender approaches to entrepreneurship, and represent, the basis for the study on women entrepreneurs and their endeavours in Sao Paulo, Brazil. She uses a conceptual framework grounded in feminist and life-course theories, embeddedness and intersectionality to investigate the changes in gender roles and gendered expectations in Sao Paulo, while underlining the intersection of the social spheres of

household and entrepreneurial activity. The framework acknowledges the embedded nature of gender and entrepreneurship to challenge the current gender order. Through a post-structural feminist perspective, which provides richer insights of women's entrepreneurship, and by adopting an embedded, intersectional and life-course analysis, the author explores the reproduction of gendering structures and investigates whether women's entrepreneurship is changing gender power relations in the household. She considers the context as a way to comprehend the world and the circumstances women and their households studied here live in.

4.1.2. Biographical trajectories of vulnerable children and youth: child labour and household strategies related to youth transitions in the framework of welfare and social policies

Vulnerable biographical trajectories of children and young people in post-convertibility Argentina

This study seeks to use the analysis of biographical trajectories to analyse the heterogeneous ways in which new generations inhabit a section of the life course: childhood and youth. To this end, it analyses in particular the development of work practices of children and young people in a city of the Province of Buenos Aires, Argentina. The study uses a set of life stories to analyse the biographical trajectories of a group of young people who worked in the street during their childhood and continue to do so in their youth. The study seeks to reveal common aspects and differences among those who share the same stretch of the life course and an initial disadvantage that accompanies them. The methodology used was a sequential mixed study in two stages: the first was qualitative-quantitative with a quantitative emphasis, and the second quantitative-qualitative with a qualitative emphasis.

Articulation of juvenile and adolescent transitions, in accordance with the strategy of mobility and survival of households

This study focuses on the appearance, articulation and expression of a matrix of social inequality that justifies the functioning of a dual and segmented labour market and the existence of different educational circuits and organizations of family life and the life cycle. The study raises questions about the concept of welfare: its minimum and historical thresholds; household strategies and social policies for intra- and intergenerational maintenance/mobility; and social policies aimed at increasing welfare to promote a "tolerable" inequality. Considering these questions, the study focuses on households' strategies with regard to youth transitions, combining macroanalyses on the performance of the homes in their promotion strategies, the perception of young people regarding inequality and mobility channels, and the vision of the designers and implementers of social policies aimed at fostering educational completion and access to employment.

Representations, discursivities and self-representations about indigenous working children in San Cristóbal de Las Casas, Chiapas, Mexico

On this secondment, the researcher intends to further a study of imaginaries, representations and tensions regarding the work carried out by indigenous children in the city of San Cristobal de Las Casas, Chiapas. Two contrasting perspectives will be used: that of UNICEF and the International Labour Organization, whose aim is to eradicate child labour in the world; and that of the Movement of the Working Youth, Children of the Christian Working Class (MANTHOC), which has been consolidating the discourse and practice of "child protagonism" through the organization of working children and adolescents (NATs), who fight for the exercise of rights established in the United Nations Convention on the Rights of the Child, including the right to work in "dignity".

In particular, the study focuses on how the imaginaries and representations that the international and state institutions promote/create/recreate with respect to child labour affect Tzotzil/Tzeltal working children in the city of San Cristóbal de Las Casas, Chiapas, Mexico from the perspective that the subjects themselves have on the subject. The methodology is qualitative, mainly using document analysis and an ethnographic and biographical approach, for which participant observation records and life history interviews are carried out.

4.1.3. Education and inequality

Access to higher education and graduation, in a comparative perspective between Argentina and Spain

The researcher's work can be summarized by certain key questions: (i) the hypothesis of the massification of higher education in Latin America, which implies an institutional dynamic that promotes access, academic progress and graduation in higher education; (ii) the reduction in the importance of the economic and cultural conditions of the homes of origin to facilitate mobility and a context of development and economic activity that facilitates the demand for professional positions; and (iii) the extent to which both factors can lead to a "surplus" of qualified workers in the Spanish case. The empirical work consisted of comparative studies using databases from Argentina and Spain, focusing on the conditions of origin, the forms of transition to employment and the rewards of status (access to higher education) and/or economic rewards.

Education, inequality and information technology

The researcher analyses the relationship between education and information technology (IT), focusing on the processes of social inequality in access to technology and the promotion of technological literacy in Argentina. The work carried out focuses on the analysis of an educational digital inclusion policy (the Equality Connect Plan: one device per student) introduced in public middle-level schools. The empirical analysis, based on the database of the Ministry of Science, Technology and Productive Innovation of the Nation (Zukerfeld, 2015), consists of the evaluation of the impact of the *Programa Conectar Igualdad* (PCI) 2010-2015 in order to gather the experiences and perceptions of the students through the construction of a typology of the profiles in relation to three points: the socioeconomic level of the students, their access to IT, and their perceptions regarding the PCI.

Evaluation of the socio-educational aspects of the Universal Child Allowance for Social Protection (AUHPS)

The article deals with the changes in social policies in Argentina, looking at continuity or discontinuity aspects as opposed to the former neoliberalist era. In particular, it considers the project named "Asignación Universal por Hijo" (Universal Per-Child Allocation, AUHPS), which should define a transition from a previous model of inclusion based on labour to one based on social rights for children, improving their opportunities to become citizens. The analysis of the main findings considered three key aspects: working conditions of beneficiaries, future trajectories for youth, and social representations of school teachers. The author analyses the problem of social assistance in specific territories and the role of public as well as private actors such as the state, schoolteachers, families, and the community as a whole. Contexts (working conditions, social origins of families, etc.) and cultural aspects deeply influence the impact of this policy, which, despite the positive aim, still has some critical points, mainly related to the low level and quality of interaction and integration among the main actors involved. The state has a crucial role to play in

reducing inequalities and promoting social change, but the role of teachers and families is particularly important for strengthening the community.

4.1.4. Care and health status, sexual and reproductive health, poverty, criminalization and criminal control, neoliberalism and gender

The evolution of poverty in Argentina between 2010 and 2016 from a multidimensional perspective. A comparative exercise using several methodologies

This study addresses the measurement of urban poverty in Argentina from a multidimensional perspective in the period 2010-2014. Applying the methodology developed by the National Council for the Evaluation of the Social Development Policy of Mexico (CONEVAL, 2009), it provides a broader view of social development that considers not only the autonomy and freedom of action provided by income but also the social deficiencies that, according to the regulations, constitute deprivations that should be eradicated. The work plan in general considers the possibilities offered by a multidimensional measurement of poverty in comparison with the limitations imposed by traditional measurements. By means of a matrix construction it is possible to generate a typology that considers situations that are qualitatively heterogeneous under different spaces of deprivation.

Vicissitudes of poverty. Occupational classes, regions and women in Argentina in the first few decades of the 21st century.

The objective of this research secondment is to compare the situation of poverty in Argentina in the period 2003-2015 with that existing in early 2016. To this end, the differentials of living conditions are analysed according to family income (also taking into account integration in employment) in order to reveal multiple instances of poverty. The analysis uses the poverty line methodology crossed with occupation from the Classification of Occupations Based on Structural Heterogeneity (COBHE). The data also emphasize the regional scope to analyse the geographic peculiarities of poverty.

Women and prisons in Latin America. Critical and feminist perspectives

This study reviews feminist literature on the criminal justice system in relation to women, with special attention to penal control and female prisons. In particular, it develops several lines of research on the subject: the views of the precursors in the analysis of women's criminal justice, criminalization and anti-drug policies in neoliberal contexts, studies of resistance and amorous relationships in confinement contexts, and studies of institutions that try to improve the living conditions of women deprived of their freedom.

Interaction between religion, sexuality and neoliberalism

During the secondments the researcher compiled bibliographic material to build a conceptual framework that synthesized the main contributions of the academic literature on neoliberalism and gender. In this framework, the concepts of the "enterprising self" and "human capital" were relevant for explaining how neoliberalism, in the face of the retreat of the State and the transfer of responsibility for welfare to each individual, produces subjectivities based on the idea that each person must invest in themselves to achieve their own development. Additionally, the idea of neoliberalism not only as a set of macroeconomic policies but also as a political rationality was recovered. This led to a reflection on the impact that the techniques of subjectivation proper to

neoliberalism have on everyday life, and particularly on family relationships, establishing the family as the basic social nucleus in the face of the collapse of the public sector and the loss of community bonds. The connection between neoliberalism and family policies thus led to a reflection on the consequences that neoliberalism has on gender and sexuality, and how inequalities in these two dimensions are structured within patterns of state retreat. This connection is useful for thinking about alternative dimensions of gender and sexual inequities based on labour market structures.

Youth, life and guided consciences. Main legal discourses of the Catholic opposition to the laws on sexual and reproductive health and egalitarian marriage in Argentina

To a certain extent, this paper is coherent with the TRG and deals with inequalities in people's rights of choice concerning their sexual orientation as opposed to the dominant culture and ideology linked to religion and the right-wing political parties. In Argentina and in Latin America, political processes for the recognition of sexual and reproductive rights have led to a series of disputes between opposing sectors. While feminist and LGBTTI movements struggle for the inclusion and broadening of these rights in public policies, a more complex activist opposition is becoming consolidated and goes beyond the religious actors that have historically defended conservative sexual morals.

Inequalities in health care and health status

This study focuses on the social inequalities in health care and health status between men and women of different social classes and age groups, considering the intersectionality of the subjects' structural insertions. Specifically, it analyses how social class, sex/gender, age group/life cycle and area of residence lead to inequalities in health status and differing possibilities of access to and performance of physical activities. The work furthers the discussion on intersectionality between class and gender, examining the way in which different social divisions are interrelated in terms of the production of social relations and in terms of people's lives.

5. Thematic Axis 4: Educational inequalities

5.1. Substantive contributions

The studies in this set of secondments refer to Axis 4 of Pillar 1, although they are not limited to it. Some of them are more directly related to Axis 3, returning to the study of inequalities in work and family life. Four out of five of these studies focus on the trajectories of individuals from different national and social contexts in dialogue with the AMOSIT model. In Pillar 2, studies combining quantitative and qualitative techniques are predominant. Three of five studies directly address gender inequalities. Two of them do so using sex as a relevant variable. In addition, the studies in this work package refer to issues that can be perceived as subjective, such as time use, political commitment, religious faith and the entrepreneurial spirit. They thus join a considerable number of studies that stimulate us to relate the objective and subjective dimensions of social life, which are often artificially separated.

The study on educational inequalities is central to the AMOSIT model, since it crosses other research axes, such as those linked to the labour market and migration in an intergenerational perspective, as well as the cross-cutting axes of gender, methodology and social policies. Educational inequalities are fundamental: they are interrelated with gender inequalities and influence the processes of social mobility and transition to work, marking life trajectories and

capacities for dealing with risks. The comparative perspective is leading us to detailed knowledge of the interaction between social rationales and societal realities. First, the social rationales that explain educational inequalities are common to different countries. They correspond to family strategies to ensure that children maintain, and if possible improve, their initial position. In these strategies, the education system and job opportunities play a fundamental role. We detected a certain constancy in family strategies, following the theoretical bases of the sociology of education, whether it is more functionalist or more critical. The cultural capital of the family is fundamental for explaining unequal educational opportunities, but educational decisions are also related to the economic cycle. Second, the school culture has common elements in Latin America and Europe, in both of which the social context of students is ignored, leading to tensions in coexistence in schools. Immigrants are affected according to the relationship between family and school that exists in their country of origin.

These studies were carried out using data from existing surveys of public bodies, such as the Spanish National Statistics Institute and the Argentine National Institute of Statistics and Censuses. In addition, team members conducted their own surveys, developing novel methodologies to address these issues, some of great impact in the country of origin. Visits were also made to educational establishments in different countries to better understand their functioning. Methodological tools such as the Household Material Variation Index were developed to measure the welfare of families.

From the point of view of gender, we take into account especially the differences between men and women, because with the same social origin women obtain better educational results. In the comparison between Spain and Argentina, it is observed that this difference is greater in the latter, possibly due to greater inequality in favour of men in the labour market. Immigrant students perform worse in both countries.

5.2. Summaries of reports

Structural causes of segmented labour markets in Córdoba

The objective of this paper is to analyse the structural economic conditions and the structure of the labour market in Córdoba, one of the richest regions in Argentina and Latin America. This analysis is based on the general hypothesis that the economic structure determines labour relations and is based on the studies of Presbich (1949, 1991) and Salvia (2016), in the structuralist theses of ECLAC on the modernization of the productive structure in Latin America, and the consequences of protectionist policies for the national industry for economic development in the region. From the secondary treatment of statistics, the productive structure of the city of Córdoba is analysed, considering its peculiarities and also its relationship with the model of economic development predominant in Latin America. It is argued that the predominant model of development based on the substitution of imports leads to a structural tendency of inequality, typical of the Latin American region. Depending on the late capitalism of Latin America, the productive structure of Córdoba gradually addressed outsourcing in the services sector. Small and medium-sized enterprises hold 95% of jobs while multinationals hold only 5%. Based on the statistical data analysed, it is concluded that the structural duality of the Latin American region is replicated in Argentina, in the Province of Córdoba, and in its capital, namely the city of the same name. The author argues that in Latin America, in contrast to what happened in Europe, labour relations were not sufficiently regulated by labour laws under public law. In addition, the Cordoban productive structure (with a strong presence of micro, small and medium-sized enterprises) lacks a high turnover, is not related to external markets, and does not have enough economic resources to incorporate new technologies into the production process. This This generates a very limited

labour market in the region, predominantly the informal nature of labour relations, a lack of specialization, and a significant increase of unemployment.

Inequality of class or ethnic? Opportunities for intergenerational social upward according to family ancestry in Argentina

From the research of Germani (1961, 1966), this contribution shows that the conformation of class structure and patterns of social mobility in Argentina were related to the characteristics of different models of economic development and migratory flows. The study analyses opportunities for intergenerational social mobility in Argentina according to the national family origin and place of birth of the respondents. What further affects the chances of achieving privileged class positions: the class of origin or national ethnic-national ancestry? What structural and cultural factors influenced and influence the promotion opportunities of the different groups? Based on three surveys of 2005, 2007 and 2010, led by Dr. Jorrat at IIGG-UBA, and Germani's study in 1961 at the AMBA, the rates of entry and exit of intergenerational social mobility through multivariate logistic regressions. Social structure of Argentina shows an unequal recruitment according to ethnic origin: in the upper class and the middle classes predominate subjects of European origin, while in the popular classes predominates the mestizo population with indigenous contribution, coming from other provinces of the country or from other countries of Latin America, regions where European immigration was significantly lower. Migratory origin exerts some influence in the opportunities of social ascension controlling by origin of class, birth cohort and educational level. Among the factors linked to the origin, the social class of the father is the variable that has the greatest effect on the class position reached. It concludes that in both 1961 and today, migrants have fewer opportunities for intergenerational social advancement in Argentina.

Inequality and education processes from the study of the construction of school experiences of young people in a school located in a peripheral neighbourhood of the city of La Plata

The pre-doctoral stay of the author aimed to advance the construction of the doctoral thesis. The objective is to understand the way in which processes of inequality and education are intertwined based on the study of the construction of school experiences of young people in a school located in a peripheral neighbourhood of the city of La Plata. To these ends a school ethnography was developed in the Basic Secondary School that is located in a peripheral neighbourhood of the city Altos de San Lorenzo. The school is located in the most precarious part of the neighbourhood, defined by conditions of structural poverty. Two lines of analysis were developed. On the one hand, in the systematization of secondary sources and the specialized bibliography in youth and education that works with statistical sources. On the other hand, in the qualitative analysis of the ethnographic material in relation to the ways of being in school. Avoiding mono-causal readings, we seek to observe the individual, relational and structural dimensions. The hypothesis is that the multiple dimensions of inequality converge in the school experience and that unequal school experiences may represent the risk of breaking the social bond character that schooling has historically had in Argentina. As part of the ethnographic process, specific information construction strategies were used previously: in-depth interview, interview as informal conversation, and observation. One of the results presented is the type of negotiations according to youthful temporality and mode of time management, namely: the school pause; school as permanent negotiation; school time at the wrong time. The next step is to deepen this typology in relation to gender: how men and women participate in these typologies, as well as movements and combinations of types.

Advances in relation to the analysis of the trajectories of middle-level students in the province of Córdoba and the AUH.

In Argentina there was an increase in secondary school coverage. Several factors contributed to this expansion (Aisenson, Virgili, Siniuk, Polastri, Rivarola, Rivero and Schwarcz, 2011). Among them, it can be mentioned that the higher requirements of training required in the labour field produced an increase in the demand for higher levels of education by the different social sectors (Jacinto, 2006; Jacinto and Caillods, 2006). The higher coverage also followed the law, passed in December 2006, which makes middle school education compulsory in Argentina. It is undeniable that the compulsory secondary level improves the coverage indicators of the young population. However, the expansion does not succeed in improving other post-income indicators such as retention and drop-out. Through the Universal Assignment for the Child (2009), a mechanism is introduced to improve the social conditions of life of vulnerable youths in order to face some obstacles that hinder access and/or maintenance in the secondary level of these young people. This scenario, like the one evidenced in Spain, implies an extension of compulsory schooling that has an impact on the processes of construction of the formative itineraries of young people, and on the school drop-out. That is, the emergence of a new research object has provided the opportunity to develop scientific knowledge tending to retro-feed decision-making in the field of socio-educational policies.

Young migrants: an approach to social and geographical mobility

The present study has as objective to analyse the crossing between geographic and social mobility of middle class youngsters who migrated from the interior of Argentina to Buenos Aires. More specifically, it is desired to know: the strategies and obstacles to migrate, how the new destination provided another field of opportunity, and whether, by virtue of that, future expectations were modified and improved, or not, the conditions of lifetime. It is explored how the change of residence of young people - middle class migrants between 20 and 30 years old - from the interior of the country and currently residing in CABA gave access to different capitals (economic, social, cultural, symbolic), employment possibilities and/or improvements in habitat infrastructure. It is also questioned what structures of educational, cultural or work opportunities were opened at the time of moving to the Federal Capital and whether the motivations that led to this move were concretized or modified in the years lived in this new space. The study was based on a qualitative methodology that allowed to trace the biographical trajectories and, in them, the perceptions that the young people experienced in the process of geographic and social change. For this, the tool used was the biographical interview ($n = 15$), with young people from the 20 to the 30 years. From this point, the emphasis will be on analysing how the biographical trajectory was modified, or not, taking into account the resources (type and quantity) managed by young people from their origin class, family and personal networks. Likewise, to analyse in parallel if the decision to migrate represented a significant change in the availability of resources and social mobility.

6. Thematic Axis 5: Geographical and social inequalities: ethnicity and Language

6.1. Substantive contributions

During the second year of the project (WP2), the thematic group 5) Geographical and social inequalities: ethnicity and language has emphasized especially the themes of inequality, social

integration and cultural relevance of special groups of people: middle classes in Chile, women in Argentina, Spanish speakers in the UK, working children in Mexico and mapuche students in Chile.

These studies have developed methodological perspectives for comparative research on public policies in different Latin American countries, especially in Chile and Argentina. In their studies, all of the researchers have concentrated in aspects of ethnic and/or territorial inequalities analysing their implications and scope to opportunity structures, processes of social cohesion and inclusion of those groups that have not been paid much attention to. The researchers have included perspectives of policy analysis that revise the role of actors in decision making processes. In addition, they have done macro level analysis of legislation and recently implemented initiatives. The research done in this TRG during WP2 indicates that there is a need to include more elements of participation, recognition and social integration in the AMOSIT model.

6.2. Summaries of reports

6.2.1. *If it deals with a specific thematic axis of Pillar 1*

All scholars bring their contributions to develop the AMOSIT model, the underlying theoretical and methodological perspective of the project designed to develop theoretical and methodological approaches to study inequalities. Contribution of the senior (post-doctoral) researchers is especially relevant here as they actively use and develop approaches and conceptual perspectives to calculate and construct ways to measure and conceptualize poverty and different socio-economic positions from a territorial or geographical perspective; e.g. the processes of social integration of special groups of women in Argentina or middle classes in Chile.

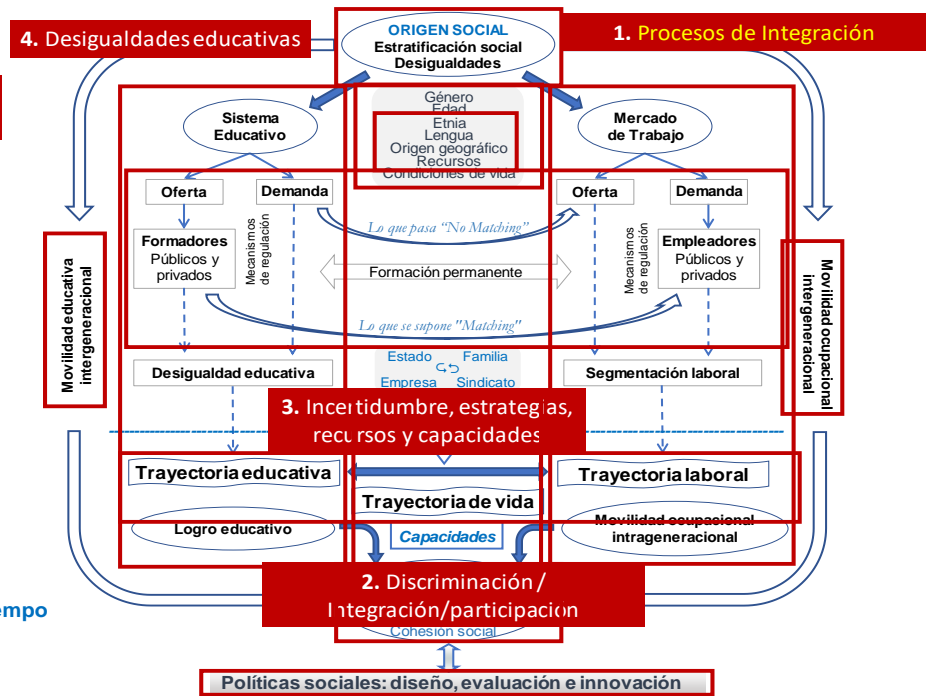
An important contribution is made by one of the researchers in her doctoral thesis in which she constructed a theoretical and conceptual frame for analysing models of social integration as illustrated in the following extract: “Most academics agree on the idea of integration as a process or a series of processes that take place across a number of different domains (Spencer and Cooper 2006). However, the way these domains have been classified and characterized has varied. Penninx (2013) has suggested a model that emphasizes the multi-scalar facets of integration with individuals, groups and institutions all implicated. His model specifies three main domains: socio-economic; legal/political and cultural/religious. Zincone, Caponio, and Carastro (2003) have also suggested three key areas of integration: “integrity (inclusion in the core institutions of the receiving country and absence of ethnic stratification); positive interaction (absence of severe group conflict and cohesion among major social groupings), positive impact on the system (system integration)”.

The work of the three researchers can be seen as operationalization of AMOSIT model.

5. Desigualdades sociales y geográficas, etnicidad y lengua

AMOSIT
Analytical Model On Social Inequalities and Trajectories
Pilar 5. Legua, genero

Espacio | Tiempo



6.2.2. If Pillars 2, 3 or 4 are considered

In the Pillar 2 the focus is on methodological processes to harmonize the “Poverty Line” in different time periods in Argentina, the goal being a cross-country and cross-region comparative analysis. Similar efforts to develop comparative methodologies is observable also in studies analysing inequalities in Chile and in studies analysing social integration of Spanish speaking people in the UK. These works apply Mixed Methods (Creswell, 2007) and utilize secondary data originating from socio-economic and household surveys.

An innovative methodological contribution is made in one of the doctoral studies that develops research practices and methods to study intercultural belonging by applying qualitative and ethnographic methods such as participant observation and biographical approach to study the life and work trajectories of indigenous worker children.

The connections with the AMOSIT model are clearly observable when trajectories of inequalities are studied through distinct moments of life cycle (childhood, adulthood) and through distinct political trajectories (education, work), always emphasizing themes of ethnicity (mapuche south of Chile and tzotzil in altos de Chipa) and language (*mapudungun* in Chile, *tsotsil/tzeltal* in México, and Spanish language in the UK).

The Pillar 3 of social policies is an underlying theme in the works of five researchers. Social policies are used as central elements and starting points for research plans, but they are also used as dimensions of analysis. When social policy is a central axis, it is usually approached from perspective of middle classes and their suppositions on public policies in Latin America, particularly in countries that have much to do with issues of poverty and popular sectors. Focusing on social policies in times of economic downturn and in context social subsidies is important because it creates the feel of protection or abandonment among middle classes in comparison with social groups. The debate about universal policies versus focused actions form part of the analysis of social policies, particularly from an intergenerational perspective. The research done deepens

the intergenerational perspective in the discussion concerning the transformation of the protection systems in the south.

The Pillar 4 is approached by one of the five researcher who has a distinct gendered perspective. She analyses women's situation from a view point of poverty, of being indigenous and of their position in occupational structure in Argentina. The research problematizes conditions of poverty and gender and pays special attention to differences between women and men in this respect. The study takes up the category "class climate in a household" taking into account the hierarchy of occupational classification also within households. The female supremacy in the "class climate in a household" is observable, and it is manifested in women's higher educational level, completion of their studies and better professional integration. Yet, women also face number of low qualified tasks and domestic work.

7. Thematic Axis 6: Social inequalities, migration and space

7.1. Summary

The contributions that address social inequality and migration take migration as a central theme in the contexts of Spain, Argentina and the United Kingdom. These studies highlight the need to apply a perspective of global analysis that goes beyond the study of local markets to consider the processes of regional (dis)integration. The study of intergenerational social mobility requires the consideration of other factors than those traditionally addressed by the literature, including time use and the dimension of social reproduction. Several studies carried out in the EU and Latin America use mixed methods and a multisite, longitudinal methodological approach that not only considers the social space of the host context but also carries out field work in different countries. In the field of social policies, some studies analyse how regional (dis)integration impacts on the circulation of people and their social integration and how, in addition to migration policies, other national public policies (education, for example) also explain the inequalities faced by the migrant population. Finally, progress is made by using a feminist and intersectional approach (articulation of gender, ethnicity, social class) to study social inequalities, highlighting the importance of considering the articulation of productive with reproductive strategies of transnational families and their impact on the trajectories of social mobility.

7.2. Substantive contributions and summaries of reports

TRG 6 presents a summary of the work reports (thesis progress reports, articles and thesis chapters) that the pre- and postdoctoral researchers carried out during the secondments in Work Package 2, as well as a publication that arose from an INCASI contribution. From the material that was available in the Excel file sent by the project coordinators, we have selected only contributions that directly address the issue of migration or that consider social class and ethnic origin as key variables in the analysis of social inequalities. Therefore, the contributions of six secondments have been incorporated into the report, and two that address the subject of poverty and gender have been removed.

7.2.1. *Migration and social inequalities*

In the course of WP2, three studies carried out in the framework of the secondments further the analysis of migration and social inequalities.

First, a study carried out in Galicia analyses the uses of time of the student migrant population in the Spanish Compulsory Secondary Education (ESO) system. This study reveals that, in addition to the structural determinants linked to education and migration policies, and other variables that the literature has traditionally analysed to study school failure (educational level of the mother, for example), family, school and leisure time can contribute to the reproduction of social inequalities and explain, for example, why adolescents of migrant origin show higher school failure rates in Galicia. This work therefore furthers the study of the intergenerational trajectories of social mobility of migrant families, providing a new element in the analysis: family, school and leisure time.

Second, a study analyses the relationship between social inequalities and migration in Argentina in a context of regional integration. The hypothesis states that there are three causal conditions of social inequality in Argentina: strikes and low salaries, differences in educational levels and low efficiency in public administration. Migration in Argentina is a positive factor for social and economic development, so it is important to understand these phenomena within the complexity of globalization and the dynamics of integration processes.

Third, a study deals with the integration of European immigrants in the United Kingdom, particularly comparing the experiences of recent Spanish-born migrants with those of recent migrants born in Latin America who have become Spanish citizens. The study considers how the different levels of human and social capital of these two groups and their different skills for mobilizing this capital impact on their social integration trajectories. It also considers the extent to which their experiences have been affected by the United Kingdom's decision to leave the EU.

Finally, one study was not performed in the framework of a secondment but led to a publication derived from the INCASI project (Oso and Suárez-Grimalt, 2017¹). Within the framework of this publication, progress is being made towards the design of a theoretical and methodological model for analysing how the productive and reproductive strategies of social mobility of transnational families are organized. The content of this publication is summarized below:

The aim of this article is to study the transnational social mobility strategies, focusing on the interaction between reproductive and productive strategies, of Latin American migrant households in Spain. We have created an analysis model based on the assessment of the differentiated strategic investments of transnational families in terms of four types of resources: physical and financial, educational, social, and emotional. Our intention is to trace variations in strategic behaviour in accordance with the migrants' family generation (grandparents, parents, children,) their migratory position (pioneering or regrouped migrants, family members remaining in the country of origin, etc.) and their family situation.

7.2.2. Social inequalities from an intersectional approach

Two studies do not address migrations directly but consider race and ethnicity as key variables for the analysis of social inequalities. They use an intersectional approach to further the study of social inequalities, considering how they can be explained through the interrelation of gender with social class, race and ethnic origin.

¹ Laura Oso & Laura Suárez-Grimalt (2017) Towards a theoretical model for the study of productive and reproductive strategies in transnational families: Latin American migration and social mobility in Spain, *Journal of Family Studies*, 24:1, 41-58, DOI: [10.1080/13229400.2017.1374202](https://doi.org/10.1080/13229400.2017.1374202)

A report carries out a literature review of work by the main feminist authors and studies on the criminal justice system in relation to women, penal control and female prisons, which reveal forms of social and institutional violence against women. The report suggests that the criminalization of women and “war on drugs” policies in current neoliberal contexts form a context of gender, class and ethnic discrimination in the prisons of the region. These policies converge with the feminization of poverty, the increase in the number of incarcerated women and crises of farm production. “Decampesinization”, the widespread growth of informal commerce, and urban impoverishment throw poor women onto the streets by inserting them into illegal networks and small- and medium-scale drug trafficking.

Equally noteworthy is a theoretical study that analyses women entrepreneurs and their ventures in Greater Sao Paulo, Brazil. In addition to a gender interpretation, it proposes that the interrelation between the concepts of female entrepreneurship—the link between business and the home—and gender roles can benefit from an integral approach that considers context, race, ethnicity, socioeconomic and class status, and the entrepreneur’s life course to investigate gender roles and expectations. Using a conceptual framework based on *embeddedness*, *life course*, *intersectionality* and *feminist* theories, this study reveals the importance of context as a tool of analysis for understanding entrepreneurship and grasping the complexity of the voices of women entrepreneurs.

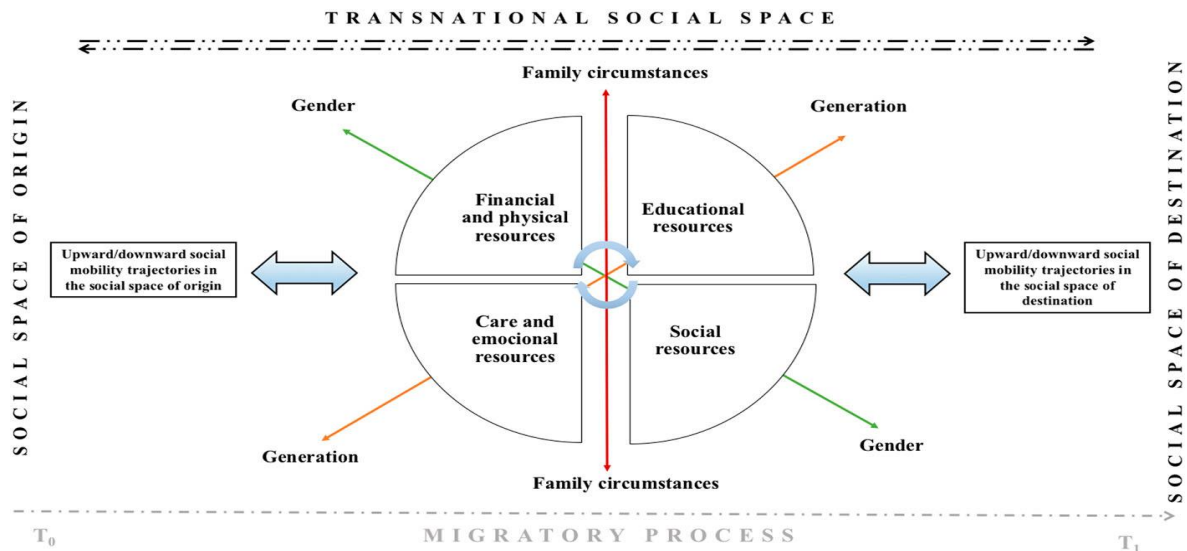
7.2.3. *Contribution to the AMOSIT model*

These studies contribute to the AMOSIT model in different areas. First, they reveal that, to address the study of the inequalities faced by the migrant population, a number of factors such as behaviour in everyday life must be considered in addition to the classical variables related to transition to employment and educational level. Indeed, the study of family, school and leisure times of migrant adolescents can help explain the difficulties of social mobility encountered by children of migrants (a higher school failure rate, for example) and the reproduction of social inequalities.

Analysing the labour market from the perspective of integration between countries, these studies reveal the creation of expanded labour markets in which flows of circulation (migration) of people take place. When the right conditions are not met, problems related to migration and economic and social inequalities between countries can arise. Therefore, the study of social inequalities and migration must not only consider the integration of migrants in local markets, but also analyse how the globalization of markets generates and explains the circulation of people.

The study that deals with Spanish migration to the United Kingdom also contributes to the AMOSIT model, insofar as it furthers the analysis of the social integration of the immigrant population. The study reveals that the integration process is better conceptualized as a multidimensional phenomenon consisting of a series of processes that take place through different domains, requiring the design of a mixed methodology that seeks to capture part of the complexity more holistically, as we will see below (contribution to Pillar 2).

The publication that has been added to this report also proposes a model of analysis of the interrelation between the productive and reproductive strategies of transnational families, which is an approximation to the AMOSIT model.



Source: Laura Oso & Laura Suárez-Grimalt (2017): Towards a theoretical model for the study of productive and reproductive strategies in transnational families: Latin American migration and social mobility in Spain, *Journal of Family Studies*, 24:1, 41-58, DOI: 10.1080/13229400.2017.1374202

Finally, the studies that further the intersectional approach also contribute to the AMOSIT model by analysing the discrimination of women according to gender, class and ethnicity. They further the study of oppression of women prisoners and their subordinate position in Latin American societies. They also contribute to a conceptual framework based on *embeddedness*, *life course*, *intersectionality* and *feminist* theories to investigate the gender roles and gender expectations of women entrepreneurs in the emerging economy of Brazil.

7.2.4. Contribution to Pillar 2: Methodology

Two of the reports are based on literature reviews (criminal justice in relation to women, penal control and women’s prisons, and women entrepreneurs and their enterprises in Greater Sao Paulo). The rest of the works use a mixed methodology.

First, the study of the time use of adolescents of migrant origin was based on a survey. A questionnaire sent to ESO students of migrant origin who had settled in Galicia included variables organized by differentiated spaces, thus explaining why differences in time use affect educational experiences. Along with this quantitative approach, it was decided to incorporate a qualitative study in order to analyse the impact of educational policy on migrant students by conducting interviews with education experts.

Second, the study on social inequalities and migration in Argentina in a context of regional integration also used a mixed methodology to identify causal conditions in order to determine how the state of the labour market influences social inequalities of migration in rural and urban areas of a country and from one country to another.

Third, the study of the integration of Spanish and Latin American citizens living in the United Kingdom in the post-Brexit context also argues for a mixed methodology based on a survey and interviews. An important contribution of this study to Pillar 2 is that it presents a discussion of the ethical considerations raised by the implementation of the research and reflective practice. It explains the application of a self-administered online survey (via Facebook) that provided the

experiences of the respondents and allowed the researcher to explore the relationships between the domains and the effects of the various factors. In-depth and semi-structured interviews were used to explore in detail the processes and the subjective understanding. The sequencing of the methods was a consequence of practical considerations, although it also allowed the design of methods to influence each other. A total of 400 responses were collected, though the survey had limitations related to the over-representation of women and the difficulty of recruiting Latin American participants, thus limiting the possibility of generalizing the survey. The survey and interviews were conducted in Spanish, which is not the researcher's native language, and this posed additional challenges related to the survey design. However, there were no problems of understanding in the interviews. During the interviews there were moments of agreement and difference, leading to the need to reflect on these moments and adopt a reflective approach to the analysis of the survey results. In addition to the use of mixed methods, reflections on a set of decisions related to the research design, the field work and the pros and cons brought to light some specific challenges of social research.

Finally, the publication that furthers the construction of a model of analysis of the productive and reproductive strategies of social mobility of transnational households used a qualitative methodology based on life histories. A longitudinal approach was adopted to analyse the changes in social and spatial mobility strategies throughout the course of the migratory process, using biographical narratives and multi-situated fieldwork carried out in Spain with Latin American immigrants (Brazilians and Ecuadorians), and also in a country of origin, Ecuador (Oso and Suárez-Grimalt, 2017).

7.2.5. Contribution to Pillar 3: Social policies

The study on family, school and leisure times of the children of migrant families in Argentina analyses the educational policies implemented in Galicia and their possible impact on the integration of the migrant population in school.

The study of social inequalities and migration in Argentina in a context of regional integration suggests that integration involves profound social, economic and political changes in the way in which states administer their internal policies. The processes of integration between two or more countries raise the question of freedom of movement of people, goods and capital. When the right conditions are not met, problems related to migration and economic and social inequalities between countries will arise.

Similarly, the study on Spanish migrants in the United Kingdom considers how the outcome of the referendum on EU membership has affected the feelings of belonging and integration of Spanish citizens in the United Kingdom.

These contributions explore how the impact of regional (dis)integration policies help explain the processes of social insertion of the migrant population, the circulation of people and social inequalities in a migratory context.

7.2.6. Contribution to Pillar 4: Gender inequalities

The studies that contribute to Pillar 4 include those that make an intersectional analysis of social inequalities. One study analyses the criminal justice system and makes visible the forms of social and institutional violence against imprisoned women. The report referring to the study of women's entrepreneurship in the Greater Sao Paulo area from a feminist perspective aims to shed light on

how women balance the decisions, dynamics and resources mobilized in entrepreneurial activity with their household routine.

As a contribution to Pillar 4, the publication that furthers the analysis model of the social mobility of transnational families incorporates the reproductive sphere as another factor to be considered for the analysis of social mobility.

8. Thematic Axis 7: Uncertainty, strategies, resources and capabilities

8.1. Summary

The secondments of this TRG addressed several issues directly or indirectly related to the central axis of uncertainty and the strategies of individuals. In the theoretical dimension, although the structural vision dominates in the reproduction of inequalities, some secondments analyse individual strategies in the mechanisms through which people make certain decisions. Two paradigmatic examples are found in migration and in the role of religion. Migration responds to structural factors and also to individual/family decisions that mark migratory patterns with different destinations. Religious beliefs are analysed as a strategy of adaptation to a complex social reality.

At the methodological level, quantitative techniques based on regressions are widely used, although some more qualitative approaches venture to open the “black box” of correlations, and some research-action approaches aim to intervene with the actors in a specific social or educational context.

Finally, although the role that social policies can play in reducing uncertainty and dimensioning the capacities of individuals is not directly addressed, policies aimed at promoting welfare are studied, and topics of health and reducing social inequalities are incorporated.

8.2. Substantive contributions and summaries of reports

8.2.1. Pillar 1, Axis 7 (*uncertainty, strategies, resources and capabilities*)

In relation to Axis 7, Uncertainty, strategies, resources and capabilities, the secondments were based on thesis studies and research focusing on the perspective of labour market supply, analysing the cultural background, behaviours, propensities and adaptive strategies of individuals in today’s society.

One proposal was to reintroduce the debate about the poverty measures about poverty, a crucial issue to assess the quality of life of society and the performance of the state and the markets, in addition to satisfying a right to information that citizens can use to validate their demands for greater welfare, justice and equity.

Another proposal was to encourage studies of poverty as a multidimensional phenomenon that cannot be grasped solely and exclusively through household expenses or income. The proposal is based on drawing up a poverty measure that considers various dimensions, taking into account both welfare (associated with income) and rights (associated with a set of specific and well-defined deprivations that are part of a broad set of citizen rights and guarantees, including the right to employment, social security, education and housing).

Welfare production modalities and their relation to work were studied from a comparative perspective between Argentina and England, recovering as a general framework the discussion on welfare regimes. The literature review and the study of the institutions visited in the research secondment contributed to the general characterization of the organizational patterns of social protection in England as a basis for establishing the standards of comparison. England is an obligatory benchmark because it saw the first developments of “modern” social policy functionalized with the construction of wage labour during the nineteenth century, including successive reforms, the Poor Laws and the emergence of the first forms of “insurance”, which was innovatively considered as social “risk”.

Potentialities and possible comparisons between work processes and social mobility in Argentina and the United Kingdom were also considered, with regard to forms of unemployment, economic uncertainty, etc. In relation to the aforementioned axes, we hope to make a substantive contribution to the AMOSIT model by constructing a series of empirical studies that allow us to make a dynamic and comparative view of inequality. In pursuit of that goal, the indicators were systematized and the Erikson-Goldthorpe-Portocarero scheme was constructed for both countries. Thus, the proposed article offers a clear intersection between Axes 1 and 8.

The study focusing on labour market supply analyses the cultural background, behaviours, propensities and adaptive strategies of individuals in (post)modern society. The objective is to analyse the impact of the “religious variable” on the decision-making process of social agents, inserting religious beliefs into the more general framework of “social mentality”. This allows us to observe how religious faith affects the socioeconomic behaviour of individuals by influencing their cognitive system, and how this affects their capacity to develop cognitive strategies for dealing with the labour market.

Another study explores the inequalities that are created or restructured through migratory experiences, examining how the factors of age, life situation, ethnicity, gender and previous migratory background affect the experiences of integration in the host society of the United Kingdom. The object of study were Spanish citizens who came to the United Kingdom and Latin Americans naturalized as Spanish citizens who undertook a second migration to the United Kingdom: they had the same rights but very different socioeconomic and migratory backgrounds. The study is also directly related to Axis 6, since it refers to migration as a strategy for combating social inequalities. It also found that existing stratifications based on linguistic capacities and ethnicity (related to Axis 5) continue to have effects after migration.

In some cases, visible markers of difference along ethnic lines become less noticeable in some very diverse urban environments in the United Kingdom, such as London. However, language skills and accent are prominent features of otherness. The context in which people choose to move to the United Kingdom also has a major impact on their integration experiences. Those who have moved with their families in later life often see downward social mobility as a long-term investment in the social mobility of their children and expect them to benefit from the education system in the United Kingdom. Therefore, the project also deals with the problems identified in Axis 8.

In relation to Axis 7, one study explores how people design strategies and mobilize resources to face the uncertainty created by the United Kingdom’s decision to leave the European Union. As residence rights, among other rights, are the subject of ongoing negotiations, this study considers the future intentions of individuals and their plans for dealing with this uncertainty. It incorporates a preliminary analysis on the differences between groups of Spaniards born in Spain and Spaniards

born in Latin America in relation to their expectations and plans for the future in the context of Brexit.

Different social groups, with their different daily pressures and priorities, have different capacities to access and use health care resources flexibly: power, money, time, information, social networks, working conditions, housing, environment, territorial location, etc. (Ross and Wu, 1995, Phelan et al., 2010). Different resources are encountered not only at the individual level but also in socio-territorial segregation, since there are areas of residence with higher and lower levels of violence and environmental pollution, with greater and lesser offers of health services (and of unequal quality), with more or less public and private places to do sports and other leisure activities, and with different access to the supply of healthy food, in addition to better and worse working conditions (Phelan et al., 2010: 30).

8.2.2. Methodology, Pillar 2

We sought to refine and extend the model that was being used, inspired by the Multidimensional Poverty Matrix (MPM/CONEVAL). We worked on the construction of data on the available source and sought to evaluate and analyse other data sources to provide different elements, so we explored in detail the Survey of Living Conditions (ECV) of the Mexican National Statistics Institute. An alternative set of multidimensional poverty measurement methodologies (mainly OPHI, BRISTOL/UNICEF and MODA) were also evaluated in order to later analyse the relevance of comparisons. Some comments made by other researchers in a seminar were used, including particularly useful observations regarding the conditions in which household income could be shown to be a fairly inadequate measure of welfare.

A mixed methodological approach is the basis of the analysis that takes into account the perspective of the social agents (specifically believers, who represent the supply in the labour market) in reference to specific socioeconomic indicators. The analysis focuses on the subjective reworking of the structural context, composed of autopoietic social systems such as economic systems, political systems and religious systems (Luhmann 1992), which make up the society system in decision-making, a process promulgated by social agents (believers), taking into account both structural factors and their own value systems (Marini 2013). Ultimately, the decisions lead to the social behaviour of agents, which in turn disturbs the structure of social systems (in a bidirectional relationship). This methodological perspective places the social agent at the centre of the socioeconomic model, in which the role of the internal value system in the agents is recognized and the structural context is also taken into account. References: Luhmann N., De Gregori R. (1992), *Teoria della Società*, Milano: Franco Angeli. Marini M. (2013), *Journal of Socio-Economics* no. 47, pp. 205-217.

The development of a matrix concept requires a mixed methodological perspective using a complementation strategy. The study describes quantitative methodological designs with action research designs regarding policies for households with a first generation of offspring entering higher education.

The quantitative design used the Index of Variation in Material Household Welfare (IVBMH) developed by the researcher and the team of the Sociodemographic Studies Chair (FSOC-UBA) to classify types of households. The IVBMH can operate both cardinally and ordinally, and even typologically. Other strategies of quantitative analysis are like logistic regression models.

The intervention-action design entails the analysis of interviews in life trajectory analysis, but within the framework of workshops aimed at households with first-generation admissions to

higher education. For comparative purposes, trajectory analyses were performed of households in which there were young people who had not completed middle school and at least one member of the cohabiting nucleus had completed higher education.

8.2.3. Social policies, Pillar 3

Previously this pillar was not considered as central to the work, but the development of robust techniques that can account for welfare increases the validity of these measurements, which are an important tool for assessing and monitoring the welfare situation and drawing up more comprehensive diagnoses of a complex problem.

This pillar was addressed throughout the studies, because social policies have a prime place in our analysis of the processes of creation of social inequalities. In our approach, we try to grasp these processes from a perspective that relates work to social interventions of the state within the more comparative discussion on welfare regimes.

Likewise, the studies of redistribution deal with different forms of state intervention in social matters, and it is hypothesized that, through a historical construction, these forms have subjective effects on the social classes.

There were also specific studies of social policies through the Connect Equality Plan, the final work of the Lopez-Roldan and Fachelli Seminars and the presentation during the JUTE Conference on Educational Technology. The contributions of Dr. José Miguel Correa Gorospe were also framed in the reflection on social policies of including IT in education.

Furthermore, matrix analyses of the welfare/inequality binomial were created and focus on the ways in which social policies intervene in household maintenance and mobility strategies. The contribution proposes a dual analysis model that articulates the levels of intervention in the framework of specific policies (short definition) and the set of macro-policies and living conditions of households (long definition).

Social policy in particular, which aims to reduce the differences between marginalized groups in the areas of housing, employment and social inclusion, is a key variable in the research, since it addresses the experiences of integration of immigrant groups in the United Kingdom. In particular, the policy (or lack of a clear policy) regarding Brexit and the rights of EU citizens in the United Kingdom is one of the variables that affect the integration processes.

One of the studies on the place in which physical activity takes place (Ballesteros and Freidin, 2017a) reflects clear socioeconomic differences: lower-income groups use public spaces more. This finding highlights the importance of inter-sectoral public policies that strengthen opportunities for physical activity in health-promoting environments that are freely accessible.

8.2.4. Pillar 4, Gender

The study adopts a specific indicator to analyse the social vision of the respondents on the gender issue. Specifically, it is observed whether a male chauvinist culture is still present in the social mentality and what its effective impact is on the reproduction of social and labour market inequalities. We also observe the role played by the religious groups studied (the Catholic Church, the Catholic Charismatic Renewal Movement and the Pentecostal and Neo-Pentecostal denominations) in relation to the male chauvinist culture; in fact, religious practices and beliefs can affect the daily lives of people by providing meaningful structure (Weber 2013).

Gender is presented as an important variable in the analysis of integration processes. As has been recognized by many academics working in the integration of immigrants, gender is an important variable that shapes experiences. In addition, it is important to observe how gender interacts with other variables such as age and the life situation.

Finally, another study also highlights the importance of performing differential logistic regressions for men and women. Several studies in Argentina that have analysed inequalities in the health status of the population use sex only as an independent variable, without paying attention to the interaction of gender with other social anchors such as social class. Not analysing the way in which sex-gender is combined with other social stratifiers leads to the limitation of treating men and women as homogeneous groups, whereas their health status and practices vary substantially according to their life cycle, social class, ethnicity and sexual orientation, and also according to whether they have chronic diseases or physical impediments (Annandale, 2010).

9. Thematic Axis 8: Inequality of opportunity: intergenerational social mobility

9.1. Summary of substantive contributions

Advances together on the Inequality of Opportunity axis: intergenerational social mobility have focused on expanded theoretical debates via meetings, teamwork, conferences, and bibliography. On the other hand, the advances in relation to the revision of databases, learning of research techniques and analysis have resulted in academic achievements in the second year of INCASI. These are expressed in approved thesis plans, research articles accepted by journals, and national funding for selected research projects.

Multidimensional contributions on studies of social inequality and opportunities for social mobility have been incorporated with greater force and specificity. Likewise, there has been a greater cross-linking of techniques and comparison approaches between countries, as well as learning and emulation of research techniques, both qualitative and quantitative. In comparison with the first year, this crossing has also implied that qualitative traditions of some teams incorporate quantitative perspectives, and vice versa, generating a greater plural bond of research.

It is also necessary to emphasize that when using the AMOSIT modality, the need to observe the academic developments with a more holistic view has been generated, which implies certain thematic concerns, that although it is true they appear transversally, that had not been considered with the importance that the project assumes, in the research agendas individually.

9.2. Summaries of reports

9.2.1. *If it deals with a specific thematic axis of Pillar 1*

Regarding axis 8 Inequality of opportunities: intergenerational social mobility, we detail below the main contributions generated during the secondments, both input and output for the visiting researcher, as well as the process involving the reception teams.

- In general, for the laboratories most directly linked to this topic, we sought to deepen the validation of the results of ongoing researches based on comparative analysis between Spanish

and Argentine labour market, from the perspective of labour market segmentation. We also focused on its relationship with the structural heterogeneity specific to Latin America.

- We also developed studies about the labour insertion of university graduates: we analysed the degrees and characteristics of the graduates of the Faculty of Law, compared with the rest of graduates of the University of Barcelona, taking into account sex, labour situation during the university years and average academic grades.
- The last goal was to analyse higher education systems. For the Argentine case, the objective was to initiate a debate with experts on the Argentine university system and to advance in comparative analyses in the region, as well as with some European countries. The access systems for higher education in Chile and Italy were characterized to carry out an updated analysis of the persistent inequalities in admission in both countries. Specifically, we described the strategy of the Chilean student movement to influence different phases of policy making. We also analysed the institutional mechanisms designed by the State to manage social demand, which is linked to pillar 3 Social Policies. This research, carried out by the doctoral student Andrés Roldán is related to the AMOSIT model, regarding how the educational system intervenes in inequalities, particularly on the side of supply deficiencies (supply in the AMOSIT model), with respect to the inequalities of origin and exit inequalities, using a compared dimension Chile/Italy.
- We deepened previous studies about labour insertion of university graduates at the time of completing the degree, their future labour projection, factors linked to academic satisfaction, professional practices and study mobility. In addition, this research line includes important sociodemographic information referred to the level of studies and work situation of the parents

These aspects involve those axes:

- With regard to Axis 1 (Inequalities in the labour market and in work trajectories), we studied mainly formal / informal differentiation in the labour market, and the characteristics of microentrepreneurs based in Great Britain, focusing on migrant located in specific branches of the economy. A literature review was established, linked to qualitative studies developed by the Centre for Enterprise and Economic Development Research, Middlesex University. A research about migrants - especially about Spanish citizens' post-migration experiences in the UK - reflects the fact that being physically mobile (a basic condition to be able to migrate) is already the result of social inequalities. It examines how this interacts with existing inequalities and creates new inequalities. In this context, she explores how Latin America is also becoming a 'new' destination for young Spaniards migrants and the differences (or similarities) encountered by these migrants in the different destinations, as well as how the existing structures of inequality alter their mobility patterns.
- Inequalities in work and family life. According to the research developed by the GEDyMS team (Group of Studies of Inequality and Social Mobility-UBA), we studied in comparative analysis the peculiarities of each social class, in the form of biographical studies.
- Geographic and social inequalities: ethnicity and language. This pillar refers to the Centre for Enterprise and Economic Development Research studies. Based on territorial and neighbourhood research, we prioritize qualitative approaches. We provide experiences for comparative analysis in the Argentine case, where ethnic studies are not so widespread. However, they are necessary when explaining inequality processes, because they are also based on discriminatory schemes.
- Inequality of opportunities: intergenerational social mobility. Regarding this point, we maintained the arguments of the previous year, specifically in the research carried out by the Group of Studies on Inequality and Social Mobility of the Gino Germani Institute: the opportunities between generations regarding accessing advantageous positions in relation to previous generation is subject not only to the societal capacity to generate structural conditions

for these passages and to the role of the State in that process; it also depends on the type of socio-productive insertion that the actors delineate, in terms of quality and productivity, type of employment, economic sector in which they are inserted, social knowledge and social networks that they possess and they put into play.

- The impacts of conditional cash transfers, the role they play in social policy systems are of great relevance. In policy debates and especially in evaluative literature the CCT model has been framed in terms of social rights and human capital accumulation. We focus on a policy that has been one of the most debated innovation in central social protection in Latin America during the past 20 years.
- We also worked on issues related to the role played by the university in the distribution of social opportunities, paying special attention to differences in labour insertion by sex.
- Was finalized a research work on the comparative analysis of class intergenerational mobility patterns in Argentina and Spain, measured through occupation, applying the classical methodology in this line of research from log-linear models.
- A work explores inequalities that are created or re-structured through migration experiences. It examines how factors such as age, life juncture, ethnicity, gender, previous migration history, affects experiences of integration in the receiving society (in this case the UK). The research considers the case of Spanish nationals who arrive in the UK with equal rights but who have vastly different socio-economic and migratory backgrounds as it includes individuals from Latin America who have naturalized as Spanish citizens and undertaken a second migration to the UK. The project therefore directly relates to axis 6 which concerns migration as a strategy to combat social inequalities. Nevertheless, existing stratifications along the lines of language capabilities and ethnicity (axis 5) continue to have effects post migration which the research on integration processes will seek to unpick. In some cases, visible markers of difference along the lines of ethnicity become less noticeable in certain superdiverse settings in the UK, such as London. However, language ability and accent, become more prominent features of othering. The context in which individuals have chosen to move to the UK from Spain also has an important impact on their integration experiences. Those who have moved at later life junctures and with families often see their downward social mobility as a longer-term investment in the social mobility of their children, whom, they hope, will benefit from the UK's education system. Thus, the project also speaks to the issues identified in axis 8.

9.2.2. If Pillars 2, 3 or 4 are considered

An overview of the substantive content developed and highlight the contribution to the AMOSIT analysis model in relation to the specific thematic axis of the considered Pillar.

Pillars 2. Methodological contributions

A methodology called construction of structural and articulated typology was applied. It is applied to measure social inequalities in typological terms, combining the Multiple Correspondence Analysis with the Classification Analysis.

Comparative analysis: comparison of occupational structures in three countries.

Quantitative methodology: The technique used is bivariate and multivariate analysis. For the comparative analysis, we used contingency tables and for the explanatory, bivariate logistic regression

Quantitative approach through the survey of the "Panel Study of Income Dynamics (ISR)", and its comparison with the survey of the Research Program of the Contemporary Argentine Society (PISAC). Analysis of the survey form, the characteristics of the sample, and the most important variables of the study.

As a methodological innovation, the work on the impact of social mobility on attitudes towards redistribution in Chile and Argentina introduces a highly sophisticated model. The diagonal model of reference, specially designed to study models of status inconsistency. Lem is a program used for the analysis of qualitative data. It is especially useful for the log-linear analysis of the contingency tables. It has been applied with special success in the realization of log-linear path models. This program is also very advantageous for the analysis of latent classes and analysis of events.

Discussed intensively the ways of combining effectively qualitative and quantitative research methods and data. This discussion proved fruitful for my own thinking on how to integrate research findings from different sources. One post-doc researcher shared details of how he used different data sets in his doctoral work and a number of useful references that have helped to develop research on the topic.

Program of Recerca en Docència Universitària REDICE propose the quantitative and qualitative analysis of the labour insertion of the graduates. In a first phase, a quantitative methodology was used to collect information on the occupational situation of university students just at the time of graduation and, in a second stage, the use of both methodologies for the analysis of professional insertion after four years since graduation.

The comparative method has also been started, exploring different experiences in Argentina on the analysis made to university graduates and, in particular, the cases of the National University of Rosario and the National University of La Plata. Bibliography on other experiences was also sought. made by other Argentine universities.

For comparative research on higher education systems in Chile and Italy, a predominantly qualitative methodology was used, with interviews with student representatives, government representatives and other relevant actors in the policy process, as well as the use of sources documentaries to record the repertoires of action of the student movement and the responses of the State to these actions.

Pillars 3: Contributions of social policies.

This pillar was approached transversally, since perceptions of redistribution attend to different forms of state intervention on the social issue. It is hypothesized that these forms have subjective effects, which, historically constructed, are based on the different social classes.

An objective of research for work is to examine the dissemination/diffusion of a social policy model labelled and conditional cash transfers. Although the research approach is underused in traditional social policy research, it is nonetheless essential in this field.

Social policy, particularly as it acts to reduce differences between marginalized groups in areas of housing, employment, and social inclusion, is a key variable in doctoral thesis as it deals with integration experiences of migrant groups in the UK. In particular, policy (or a lack of clear policy) around Brexit and the rights of EU citizens in the UK was one of the first areas of analysis of preliminary results on Chile. This will be a variable that we will continue to pay attention to throughout as part of a wide consideration of variables that affect processes of integration.

Finally, the comparison of the Chilean and Italian educational systems from the point of view of the organized actors that seek their transformation contributes in two dimensions to this pillar: 2) to the dialogue with the dimension of social policies (in this case of education) 3) the dimension of innovation in social policies when organized actors press the political system to remedy part of the problems of the Chilean educational system.

Pillars 4: Gender

The perspective of segmentation takes into account the relevance of the job offer and, in particular, of the gender profile. The results illustrate the segregation and the majority unequal position of women in the labour market in the segments of lower qualification, for the Argentine case mainly, where this research perspective was proved.

Some stays focused on the idea of incorporation into quantitative analysis, the variable "class climate of the home", which strongly emphasizes the position of women in the social structure and also rediscussing the results based on the main "breadwinner".

This issue was not addressed in a specific way, although the sex variable is one of the control variables within the inconsistency model of the status to be applied.

It was incorporated as an analysis in the strategies of reproduction of households, organizational differences when the direction of the home is shared, male or female.

We also compared the situation by sex of university graduates in the context of employment. Surveys carried out by the Agència per a la Qualitat of the University System of Catalonia on the job placement of university graduates in 2008, 2011 and 2014 are available. From the analysis of contingency tables, means test, analysis of variance and regressions linear, different labour indicators were explored as activity rates, unemployment and inactivity, quality of employment. Special emphasis was placed on the salary situation of men and women in order to analyse whether there are differences.

In terms of social mobility, some findings were confirmed by questioning the conventional view of social mobility (analysis of the origin of the male), and incorporating a gender perspective, since both absolute and Relative differentials in women and these patterns challenge traditional findings. In this way, the persistence of inequalities is questioned as soon as women are included, since it is they who contribute the highest levels of social fluidity. The historical process of social change that women have experienced in the last half of the century with regard to their relationship with the labour market requires a review of international findings and a rereading of them in terms of a gender perspective. about the impact of social mobility on attitudes towards redistribution in Chile and Argentina, in the sense that one of the variables contemplated is the sex variable, present in all models, we contemplate the gender dimension.

10. Thematic Axis 9. Pillar 2: Methodology

10.1. Substantive contributions

The methodological contributions generally reproduce characteristics similar to those discussed in the previous report of the Work Package 1. Although in many cases the reports do not sufficiently develop the methodological strategy, which does not allow to extract precise elements, in the texts that inform about it, there is coherence between the objects of study and the theoretical problematizations, and diversity, wealth and constancy are observed in the designs and techniques applied.

In general, a distribution between the different methodologies is evident, although with a certain predominance of the quantitative perspective. Qualitative studies develop investigations in which they apply the techniques of in-depth interviewing and participant observation, recovering the social representations of children and adults of specific populations.

Quantitative studies, on the other hand, use different statistical bases at national level and carry out diverse analyses such as: multiple correspondence analysis, classification analysis, multivariate analysis and Log-linear analysis.

The investigations that apply mixed methods deploy multivariate quantitative analysis, document analysis and in-depth interviews and/or biographies to various social actors located in specific groups or territorial spaces.

Although they express their coherence of treatments, we cannot fail to notice a hiatus in the contents and expected results, taking as reference the AMOSIT model. On the one hand, studies are grouped whose central axis is social inequality and are directly linked to the initial AMOSIT model. On the other hand, works that reach to intersect the AMOSIT model are grouped, but the centre of their focuses, as research problems, does not converge towards it in a concrete way. It would be necessary to adjust this type of contributions so that they add content and strategies to the model that brings us together.

Also from the point of view of AMOSIT and the future research project should develop a specific look rescuing the contributions raised by the methodological strategies that serve to design and inform the research methodology to be presented soon. This would happen, in a generic way, by addressing the following aspects, in key words: comparative methodology (between countries-societies), dynamic analysis (longitudinal, biographical, trajectories, transitions, mobility, life course, etc.), macro-micro links, mixed designs that involve the articulation of a quantitative treatment of surveys (and other secondary data) with multivariable techniques (for static, dynamic and multilevel analysis), and a qualitative treatment to deepen the aspects of construction of sense of actions and detailed study of life strategies from a sociobiographical perspective or life course (prioritizing the biographical interview against other possible techniques).

Another dimension of the current INCASI and the future project would be the aspect of "innovation" from the methodological point of view, not so much technical, in the face of WP3 we should think about how the methodological strategy devised incorporates elements of innovation, thinking perhaps especially in the fact of comparing Latin American and European societies, or in the fact of quantitative articulation for dynamic analysis.

10.2. Summaries of reports

The different contributions have been commented along the eight thematic axes corresponding to Pillar 1. In this second Pillar 31 contributions were analysed that are not summarized so as not to reiterate the contents already commented.

11. Thematic Axis 10. Pillar 3: Social Policies

11.1. Summary of contributions

A total of 27 entries or secondments were listed under TRG-10 in WP2. Out of this, a total of 16 secondees responded 'YES' to the question posed relating the relationship between the research conducted and the issue of Social Policy (SP) in the relation to the 3 categories simultaneously i.e. (1) YES, 'social policy plays a central role' in their research; YES, 'SP is one variable among others'; and YES, 'SP is only referred to in the research in relation to implications for policy and practice'. There was clearly a problem in the interpretation of the question (it expected one YES only) which unfortunately makes the analysis of this important piece of information meaningless - we just do not know what role SP plays within this body of research. Out of the remaining 11 secondments, for the large majority of them (9 in total) SP was only one variables among others analysed in the research, primarily as a transversal variable.

In order to find out more about the level of importance that SP has for these 27 studies we had to conduct an analyse of the individual reports submitted and particularly the descriptive question on social policy (Column AT – question 4.3. in the Excel spreadsheet). Based on this exercise we were able to identify 14 secondments that engaged with issue of social policy and that in turn provided information as to assess this level of engagement. The report below is based on these 14 cases.

The profile of the sample of secondments shows that it was a gender balanced sample of colleagues, with more pre-docs than post-docs. The dominant broad themes studied were gender inequalities; closely followed by education; comparative studies; health wellbeing; and measures of poverty. Overall this body of research is either in line with or contribute to enhance the AMOSIT model, for example the issue of gender inequalities. One factor that should be highlighted, and that was not accounted for in T3G-3 WP1 report, is that a new group of secondees (5 in total) were either planning to conduct or are already conducting comparative research between Europe and Latin America – in line with INCASI's central objectives.

11.2. Summaries of reports

The report below is divided into 6 sections. These includes: titles of the study/secondment reports; demographic profile of sample; thematic areas covered; degree of development of the research and the role of social policy within these; and relationship with the AMOSIT model.

11.2.1. *Titles of the secondment report*

In the table enclosed we present a summary of the contributions.

Summary of contributions

Entry Number	Thematic area/s	Geographical focus	Degree of development of the research	Role of SP in the research	Relation with AMOSIT
N4	Improving measures of poverty - a more comprehensive 'multidimensional' approach proposed	Argentina	Very advanced/completed	Social embedded into the multidimensional approach proposed to measure poverty	Add knowledge
N6	Comparison of social protection models in two contrasting countries	Argentina & England	Still being framed but close to start with data analysis	SP central to understand inequalities and welfare regimes	In line with AMOSIT
N10	Gender inequalities & the legal justice (prison) system	America Latina	Unknown – but more likely at an early stage	SP central to reduce inequalities concerning criminal justice/ prison system	Add new perspectives
N11	Educational inequalities & new technologies (Plan Conectar Igualdad)	Argentina	Unknown but possible at an early stage	Unknown	Add new perspective to the education pillar
N12	Access to and completion of higher education & outcomes	Argentina & Spain	Still being framed	Unknown	In line with AMOSIT
N13	An examination of the diffusion of Conditional Cash Transfers	America Latina (¿)	Still being framed	Focus on Conditional Cash Transfers policies	In line with AMOSIT
N14	Youth's education, households & social mobility	Argentina	Still being framed	Unknown	In line with AMOSIT
N15/16	Gender & labour market inequalities	Argentina & France	At a very early stage	Unknown	Add gender perspective
N17	Gender inequalities & political activism in rural areas	Rural Brazil	Still being framed	Focus on the changing SP environment from progressive to more regressive approaches	Add gender & agency perspective
N18	Developing a matrix to compare social policies at international level	Argentina, Brazil, Chile & Uruguay in a first instance & then Europe	Still being framed	Social policy as the main object of study	Add methodological knowledge relating comparative studies
N19	Evaluacion de politicas dirigidas a palear el absentismo y abandon educativo	Chile & España	Comparisons in progress	Social Policies in the area of education central for the research	In line with AMOSIT
N20	Female self-employment & the family/household nexus	Sao Paulo, Brazil	Framed and in a data collection stage	Focus on social policy gaps & voided state spaces	Add to Labour Market pillar & gender
N23/25	Second-movers migrants to UK	UK, Spain	Data analysis stage	Migration & Integration policies	Add to AMOSIT
N24	Healthy life, physical activity & wellbeing - health	Urban Argentina	Near to completion	Unknown	Add to the health pillar

11.2.2. Profile of the sample

The first issue examined in this TRG-3 Report is the profile of the sample of secondees, starting with the issue of gender. The descriptive analysis conducted showed that it was the case of a relatively gender-balanced sample of colleagues – with 6 males and 8 females in total. As regard their career development, out of the 14 cases 9 were pre-docs and 5 post-docs.

11.2.3. Thematic areas

As far as the thematic areas of work is concerned, the area that attracted the greatest attention among these secondees were gender inequalities (5 cases in total); closely followed by education related inequalities (4 cases); comparative studies of inequalities (2 cases); health wellbeing and measures of poverty (one case respectively) (see details in Table 1).

One factor that should be highlighted here and that was not accounted for in TRG-10 WP1 Report, is the fact that a (new) group of secondees (5 in total) were either planning to conduct or are already conducting comparative research between Europe and Latin America – in line with INCASI's central objectives. In 3 cases these are one to one country studies (almost all of them involving Argentina and an European counterpart country, i.e. Spain). In one case the study involves more than one country in each continent. Interestingly, the distinction between 'urban' and 'rural' dimensions was the focus of attention for 3 secondees, which provides an interesting angle to the study of the geography social inequalities and its often unequal distribution.

11.2.4. Degree of development of the research and role of social policy

As regards the level of development of the reports submitted to TRG-3 WP2, out of the 14 submissions the large majority of them (9 in total) were still being framed and/or at a very early stage of development. This does not come as a surprise given the higher numbers of pre-docs in the sample.

Two projects were very advanced stage and/or near to completion and another four were either at the data collection or data analysis stage. In the majority of cases, the role that social policy plays in the studies is not yet clearly elucidated (6 cases – the largest group), although on paper, SP is said to be central for the study.

In 5 cases social policy does play a central role in the study and this role is clearly elucidated in the report– two cases focused on evaluation of specific social policies, one in the area of education and technology and the other on income distribution. Two further cases focused on social policy gaps or voids (where there is not social policy developments to address the problem but it should) (e.g. women rights within the prison system) and one case focused on the changing (social) policy environments (e.g. in Brazil, which moved from a progressive policy agenda on rural issues to a regressive one in the last few years) and the implication of these changes on women inequalities and participation in social movements).

11.2.5. *Relationship with AMOSIT model*

Overall the body of research developed in TRG-10 WP2 is either in line with and/or contribute to enhance the AMOSIT model e.g. by addressing new areas of study concerning the issue of social (and economic) inequalities, notably the Equal Opportunities agenda (i.e. ethnicity, gender, disability) and particularly gender inequalities. The issue of gender inequalities is examined on its own right, as a discrete research topic, or in interaction with other forms of inequalities such as inequalities in accessing the mainstream labour market, legal rights and recognition, among others.

12. Thematic Axis 11. Pillar 4: Gender Inequalities

12.1. Summary of contents

The dimension of gender inequalities is included, together with the methodological aspects and public policies, as a cross-cutting perspective in the Analytical Model on Social Inequalities and Trajectories (AMOSIT). The studies included in this axis focus on various social problems from a gender perspective, contributing to explanatory frameworks of the important role of social reproduction and the position and role of women. These interconnected studies take into account the public sphere, the labour market, the family, and reproductive times and activities in general. Specifically, they analyse the implications of the relationship between family, market and the state.

The studies developed in the secondments of work package 2 are included in one of the eight axes of pillar 1 of the AMOSIT model because of their thematic content. They develop aspects of the gender perspective and can be summarized as follows:

12.1.1. *Gender division of labour (productive and reproductive work), reproduction and participation in the labour market*

These studies deal with labour segmentation, the labour market and social protection systems; analysis of precarious work, taking home-based work as an object of analysis; the gender division of labour; women entrepreneurs; and how feminism can influence the organization of work. The perspectives of the studies consider work in a broad sense, over and above employment, taking into account the gender division of labour and its implications for the family, the market and the state.

- 1.1. Reproduction and participation of women and men in employment in a context of globalization
- 1.2. Changes in the gender division of rural work, the division of domestic work, and the political commitment and militancy of women
- 1.3. Inequality and segmentation in the labour markets of Spain and Argentina
- 1.4. Segmentation of the labour force: a comparative analysis between Spain, Italy and Argentina
- 1.5. Social inequalities and migration: A comparative analysis in Latin America
- 1.6. Pension reforms: Italy and Argentina

- 1.7. Home-based work, the last link in the chains of neoliberal production in Chile
- 1.8. Feminism and work organization
- 1.9. Gender and women entrepreneurs

12.1.2. *Migrations*

One of the studies carried out on a secondment analyses migratory movements and factors of integration experiences.

- 2.1. Inequalities: created or re-structured through migration experiences

12.1.3. *Social mobility, education and inequality*

This area includes, first, studies of access to higher education and graduation, the transition to work of graduates, and education and social mobility; and, second, studies on incorporating gender in the more traditional analyses of social mobility and the impact of social mobility on redistribution in Southern Cone countries, within the framework of an adaptation of social class systems in view of the structural heterogeneity of Latin American countries.

- 3.1. Access to higher education and graduation in a comparative perspective between Argentina and Spain
- 3.2. University graduation and transition to work
- 3.3. Configuration of an institutional programme for professional monitoring of university graduates
- 3.4. Analysis of the Argentine higher education system
- 3.5. Social and educational mobility in Uruguay
- 3.6. Social mobility and gender
- 3.7. Intergenerational social mobility
- 3.8. Adaptation of social class systems in view of the structural heterogeneity of Latin American countries and the impact of social mobility on redistribution in Southern Cone countries.

12.1.4. *Care and health status, sexual and reproductive health, poverty, criminalization and criminal control, neoliberalism and gender*

This thematic area includes studies of poverty from a multidimensional perspective, inequalities in health status and care, sexual and reproductive health, access to women's/LGBT rights, and criminalization and penal control of women. All of these studies reflect on social exclusion, sectors of socioeconomic marginalization and the reproduction of these processes, incorporating the gender perspective.

One of the studies reflects on neoliberalism not only as a set of macroeconomic policies but also as a political rationality, incorporating a gender matrix and a decolonial matrix of power that interweaves capitalism, sexism and racism.

- 4.1. Multidimensional Poverty Matrix: intersection between the space of welfare and the space of rights

- 4.2. Poverty conditions and gender
- 4.3. Women and prisons in Latin America. Critical and feminist perspectives.
- 4.4. Maternity in adolescence, a desired phenomenon? Characterization of adolescent reproduction in five countries of Latin America and the Caribbean
- 4.5. Inequalities in health care and health status
- 4.6. Gender, human rights and sexuality
- 4.7. Access to women's/LGBT rights and uncertainties
- 4.8. Neoliberalism and its impact on subjectivities, capacity for agency and daily life
- 4.9. Colonial matrix: capitalism, sexism and racism

The reports on the axes of pillar 1 present details of the substantive contents of the work carried out. The report on the cross-cutting gender perspective will deal with “Integrating gender/sex analysis in research and innovation (R&I) content, which helps improve the scientific quality and societal relevance of the produced knowledge, technology and/or innovation”. The “gender dimension” means integrating sex and gender analysis into research (the term was developed within the European Commission). The goal of integrating sex and gender is to ensure excellence in research. The gender dimension is about harnessing the creative power of gender analysis to discover new things and stimulates excellence in science and technology by integrating sex and gender analysis into research.

12.2. Substantive contributions and summaries of reports

We use the terms and model offered by the Gendered Innovations Project. This project offers Methods of Sex and Gender Analysis to be integrated into all phases of basic and applied research—including setting priorities, funding decisions, establishing project objectives and methodologies, data gathering, analysing results, and evaluation (http://ec.europa.eu/research/science-society/gendered-innovations/index_en.cfm).

12.2.1. *Rethinking research priorities and outcomes*

Of the studies carried out in this period, 13 have dealt with the priorities and benefits of research from a gender perspective: How do gender norms influence priorities? Whom will the research benefit, and whom will it leave out? Do established practices and priorities of the funding agency encourage gendered innovations? Are new data required to make decisions about funding priorities?

These include the following studies:

Feminism and work organization

The researcher asks two research questions: How can work organization reflect the feminist aspect of the organization? How do the same employees, who call themselves feminists, implement an ethic of feminist care in their labour relations?

The study proposes an analysis of work organization in two non-profit feminist organizations that care for battered women. The analysis refers first to the field of study, “trying to show how feminism can influence work organization and how both structures led to a model of participatory management, without hierarchies”.

Neoliberalism and its impact on subjectivities, capacity for agency and daily life

Regarding the gender pillar, this fundamentally theoretical study focused on analysing how neoliberalism, as political thought articulated with a neoconservative rationale, impacts on the construction of a specific model of the family, based on a greater workload and responsibilities for women. The family model that is obtained from the neoliberal rationale is crossed with a gender and sexual matrix that favours subjects of a certain type over others. It acts in opposition to policies of gender equality in the public and private space, and to the emancipatory sexual policies that seek the recognition of diverse types of families.

Women and prisons in Latin America. Critical and feminist perspectives

The researcher presents an overview of several studies of imprisonment of women, revealing a neoliberal geopolitics that places Latin American women in more severe punitive conditions than their peers, and in comparison with women in European prisons. These secondary sources allow the researcher to state that “women’s prisons in Latin America are a good vantage point for studying the new trends of punitive control of women imprisoned for drug offences, new arbitrariness and penal and prison disciplines.”

Colonial matrix: capitalism, sexism and racism

In a second secondment, this researcher carried out a literature search focusing on the postcolonial and decolonial theory, in order to understand the ways in which the neoliberal rationale intersects with a colonial matrix of power that interweaves capitalism, sexism and racism. Additionally, she incorporated into this framework the contributions made by decolonial theory, in order to understand how the neoliberal rationale, as an advanced stage of global capitalism, reproduces and updates (although under new terms) colonial enclaves associated with gender and sexuality.

Gender, human rights and sexuality

During the secondment, theoretical work was done with the concepts and approaches in which gender issues and debates on human rights and religion are interwoven. This revealed the ambiguous—and often contradictory—political use of these rights. In view of the social and political legitimization that human rights have acquired in recent years, this leads to a discursive displacement by conservative actors.

Specifically, the study considers how the debates on the tensions and porosity of human rights discourses in the field of sexuality can lead the emphasis to be placed on discussions about what is common to all human beings; and the justification for recognizing humans rights from more traditional perspectives, such as those linked to marriage and/or love, and in current times, for example, through discourses based on health as a core category for assessing sexual behaviours.

Access to women’s/LGBT rights and uncertainties

How can one grasp and explain a paradoxical situation from the European perspective in the chronology of sexual and reproductive rights in Argentina? What is the contribution of the comparative perspective to understanding the contemporary forms of guardianship of the state over the bodies and reproduction of women in Argentina? And what is the theoretical framework that can be mobilized?

The work carried out by two authors proposes to grasp the ambivalent effects of the context of uncertainties in European and Latin American societies (specifically France and Argentina). They analyse how in individualistic societies of uncertainty, which led to mistrust

in institutions and in the welfare state, windows of opportunities also opened in terms of gender (access to homosexual marriage and gender identity change in Argentina). However, this window of opportunity does not prevent a dual phenomenon: 1) continuing resistance to a fundamental individual right that influences the construction of a future of their own for women (including education and professional life): free access to abortion; and 2) inequalities within women to become independent.

12.2.2. *Rethinking concepts and theories*

A large number of the studies, 11, consider the implications of concepts and theories from the gender perspective:

- What (if any) “background assumptions” about sex and gender are shaping or embedded in the concepts and theories of the field?
- What are the implications of concepts and theories about sex and gender for how research is conducted—that is, the choice of research topics, the methods used, what counts as evidence, and how it is interpreted?
- What issues related to sex and gender are not being addressed, or are being misunderstood or misrepresented?
- Are there conflicts between the assumptions being made about sex and gender and relevant available evidence and understandings about sex and gender? How do concepts and theories need to be reformulated to take this new evidence into account?
- How do new concepts or theories bring to light new evidence?
- Do these concepts and theories open up spaces for gendered innovations?

The studies that deal with the theoretical and conceptual assumptions from a gender perspective include the following:

Reproduction and participation of women and men in employment in a context of globalization

This study analyses the representations regarding the position of women (and men) required by reproduction and participation in the labour market. Within this framework, it analyses the dimensions that make up the gender contract; the integration of women in the labour market; family structures; the institutionalization of women’s and LGBT rights; the cultural foundation and vision of gender differences; the regulations of the different forms of gender violence; and the interplay between financial, affective and decisional autonomy.

A Franco-Argentine comparative analysis is made of (i) gender policies and the history of women’s and LGBT rights, and (ii) the discursive productions regarding the demands of 8 March 2017, paying specific attention to the new media.

Inequality and segmentation in the labour markets of Spain and Argentina

During several secondments of two researchers, work is continuing in the perspective of labour market segmentation. Various theoretical foundations and operationalization proposals are used to conceptualize the labour market from a multidimensional perspective of factors that affect the configuration of various segments that unequally structure work and employment. The objective is to analyse social inequalities in the labour market and compare a typology of positions between Spain and Argentina, also taking into account other Latin American and European countries. The relationship of these inequalities to the perspective of structural heterogeneity developed in Latin America is analysed. The study

takes into account the importance of the job offer and, in particular, of the gender profile, exploring segregation and the mostly unequal position of women in the lowest-skilled segments of the labour market.

Configuration of an institutional programme for professional monitoring of university graduates

During two secondments, the objective of the work was to develop the research project on access to the labour market for university students that is being carried out in Barcelona, and to explore the possibilities of extending it to Latin American universities.

Regarding the gender axis, the project reviews the suitability of the instrument used to collect information (survey by questionnaire), to create the database of graduates annually and to improve the deficiencies detected, considering the gender perspective in the use of non-sexist language and in the inclusion of questions that allow gender differences to be investigated.

12.2.3. Formulating research questions

This section includes the studies (7 in total) that consider the current state of knowledge on sex and gender (norms, identities or relations): How have sex and gender functioned to limit the research questions and what do we not know as a result of not analysing sex and gender? Have any potentially relevant groups of research subjects been left out? What research questions would lead to more robust research designs and methods?

One of the studies that would be placed in this area is “Changes in the gender division of rural work, the division of domestic work, and the political commitment and militancy of women”. This study analyses interrelated inequalities (gender, class, race and sexuality) in rural work and family life, considering the gender division of labour, productive and reproductive work, and changes in women’s political commitment and militancy. The fieldwork focuses on rural women and women who work for institutions such as the government, NGOs and universities, using an agro-ecological approach (agro-ecological productive practices and way of life). Gender is central and cross-cutting, and a micro-perspective is used to analyse the gender division of labour, inequalities and power relations in families, and a macro-perspective to analyse the consequences of public policies on the work, rights and living conditions of rural women.

Another of the studies included is “The conditions of poverty and gender”, which presents the specific need to “problematize the conditions of poverty and gender, especially in order to appreciate the differences in these situations between men and women.” This study explores the masculine conditions of the labour market and the predominant views on employment and poverty conditions, focusing on particular on the dissimilarities of sex rather than gender relations. These dissimilarities involve disparities due to patriarchal cultural formats in the dynamics of employment, the conditions of reproduction in the home and the family, and the social policies of transfers.

12.2.4. Analysing sex

Analysing sex involves six steps:

- i). Recognizing differences within groups of females and males/women and men (biological and sociocultural factors).
- ii). Collecting and reporting data on factors intersecting with sex.

- iii). Analysing and reporting results by sex.
- iv). Reporting null findings. Researchers should report when sex differences (main or interaction effects) are not detected in their analyses to reduce publication bias, an important consideration in meta-analyses.

The eight studies that deal with some of the above issues include the following:

Workforce segmentation: a comparative analysis of Spain, Italy and Argentina

This study, based on unorthodox theories of labour market segmentation, focuses on workforce segmentation through a multidimensional comparison of Argentina, Italy and Spain in relation to various characteristics of employment: flexibility, wealth, autonomy, economic activity, education, skills, etc.

Pension reforms: Italy and Argentina

The researcher works on the first axis of “Inequalities in the labour market and labour trajectories”. Indeed, touching on the issue of pension reforms, it is undeniable that inequality in the labour market is strongly reflected in the situation of retirees.

Especially in a context with enormous informality, it is expected that a contributory system based on the occupational model is likely to reproduce inequalities between those who have a salaried job and those who are unable to access formal work. The researcher also addresses the third pillar, Social Policy, since it is based on the comparison of contraposed reforms that Italy and Argentina enacted in the 2000s. Moreover, the paper will provide some evidence of the reforms’ impact on gender equality, as both of them have affected the role of women after retirement.

Analysis of the Argentine higher education system

The objective of this study is to initiate a process of discussion with experts on the Argentine university system and, in the future, to further comparative analyses in the region, in addition to making comparative analyses with some European countries.

To this end, the report aims to provide simple and strategic information through the construction of indicators and statistical analyses that reveal the structure and evolution of undergraduate, graduate and postgraduate university education in public and private institutions in Argentina.

Intergenerational social mobility

The objective of this study was to develop an article presenting some research results about intergenerational occupational mobility in Spain. The analysis of social mobility is performed from two points of view: absolute mobility (changes in social structure between parents and children) and relative mobility (changes in opportunities of access to a social position).

University graduation and transition to work

Situated in the historical process of social change in reference to the link with the labour market of women during the last half century, the researcher undertakes a rereading from a gender perspective in a transnational study of Argentina and Spain. The topic focuses on the role played by universities in the distribution of social opportunities, with special attention to differences in transition to work by sex.

In particular, it compares by sex the situation of university graduates in the context of transition to work and the effect of the Spanish crisis on university graduates in Spain, also focusing on the income gap between men and women. The comparison of the data reveals

that the gender gaps persists and that graduates are those who have most suffered the impact of the crisis.

12.2.5. *Analysing gender*

Gender refers to cultural attitudes and behaviours that shape “feminine” and “masculine” behaviours, products, technologies, environments and knowledges. “Femininities” and “masculinities” are multidimensional and can be practised in different ways by biological females or males; gender does not necessarily match sex. Gendered attitudes and behaviours are not binary but slide along multiple continua (norms, identities and relations). So, what are the researchers’ or engineers’ gendered assumptions and behaviours that affect the proposed research? What are the research subjects’ and users’ gender needs, assumptions or behaviours as they affect the proposed research? How do the genders of the researcher and of the subjects/users interact? Four of the studies aim to answer these questions.

Social inequalities and migration: a comparative analysis in Latin America

The researcher points out the need to adopt a gender perspective to deal with inequalities in the labour market, reflecting on the conflicts that may arise from the incorporation of women.

The aim is to make a comparison of the traditional (male breadwinner) and modern market models in order to identify the main obstacles that women face. These models must take into account the different gender roles that men and women have to play in the current job market.

Home-based work, the last link in the chains of neoliberal production in Chile

This study analyses the precarious work of women in Chile. In particular, it analyses home-based work by women in the current context of flexibility, reorganization of production and work, and an increasingly globalized economy.

The central aim of the researcher is to identify and interpret the forms of control and resistance of home-based workers linked to large companies in the manufacturing sector in neoliberal Chile, and how they operate. The methodology used is basically qualitative, through the use of in-depth interviews and observation in workshops and homes.

Gender and women entrepreneurs

In this research secondment, it is aimed to analyse gender practices in Sao Paulo households arising from female self-employment, in which the sphere of the home and the entrepreneurial practices of women intersect and influence each other.

A qualitative study, adopting the constructivist epistemology, is used to explore how the social order has a marked gender character. The aim is to offer new interpretations of the phenomenon of female entrepreneurship in the suburbs of Sao Paulo, Brazil, examining changing gender roles and using entrepreneurship and the household as a perspective for understanding women as major players in households and in the market

Maternity in adolescence, a desired phenomenon? Characterization of adolescent reproduction in five countries of Latin America and the Caribbean

This study analyses reproductive inequalities, defined as the aggregate differences in levels and age structure of fertility outcomes in immigrant women of Buenos Aires. During the secondment, the researcher specifically focused on adolescent fertility in five countries of Latin America and the Caribbean.

Reproductive inequalities are of two types: (i) the position of women in the social structure determines the results of reproductive behaviour; and (ii) fertility outcomes can affect the social mobility of women of childbearing age and later.

12.2.6. Analysing factors intersecting with sex and gender

Almost half the studies carried out in the secondments of this period, 13 of them, deal with how sex and gender also intersect in important ways with a variety of other social factors, including age, socioeconomic status, ethnicity and geographical location. It is important to analyse sex and gender, but also to examine how other factors intersect with sex and gender. These factors or variables can be biological, sociocultural or psychological aspects of users, customers, experimental subjects or cells.

Inequalities: created or re-structured through migration experiences

In two secondments, the researcher examines how factors such as age, life juncture, ethnicity, gender and previous migration history affect experiences of integration in the receiving society (in this case the UK).

The study considers the case of Spanish nationals who arrive in the UK with equal rights but have vastly different socioeconomic and migratory backgrounds, as it includes individuals from Latin America who have naturalized as Spanish citizens and undertaken a second migration to the UK.

Social and educational mobility in Uruguay

During the secondment, an analysis of social and educational mobility data in Uruguay was carried out. This study gathered data on social origin, education, sex region and current social class of the interviewees.

Social mobility and gender

This study considers the need to question the conventional approach to social mobility (analysis of the origin and destination of men), and incorporates a gender perspective, because both absolute and relative differential patterns are found in women, and these patterns question the traditional findings.

The persistence of inequalities is placed in question when women are included, because they contribute the highest levels of social fluidity. The historical process of social change that women have experienced in the last half century in their connection with the labour market requires a revision of international findings and a rereading from a gender perspective.

Adaptation of social class systems in view of the structural heterogeneity of Latin American countries and the impact of social mobility on redistribution in Southern Cone countries.

During the secondment, two studies were carried out on the adaptation of social class systems in view of the structural heterogeneity of Latin American countries and the impact of social mobility on redistribution in Southern Cone countries. All the studies undertaken considered gender as one of the fundamental variables.

Multidimensional Poverty Matrix: intersection between the space of welfare and the space of rights

The secondment was used to construct the Multidimensional Poverty Matrix, using an approach based on the intersection between the spheres of well-being and rights. This perspective is based on three antecedents: a) studies on human development; b) theories of

social structuring; and c) the normative approach based on economic, social, political and cultural rights.

Inequalities in health care and health status

This study focused on the social inequalities in health care and health status between men and women of different social classes and age groups, considering the intersectionality of the subjects' structural insertions. The study analyses how social class, sex/gender, age group/life cycle and area of residence lead to inequalities in health status and differing possibilities of access to and performance of physical activities. The work furthers the discussion on intersectionality between class and gender, examining the way in which different social divisions are interrelated in terms of the production of social relations and in terms of people's lives.

Access to higher education and graduation in a comparative perspective between Argentina and Spain

The researcher's work can be summarized by certain key questions: (i) the hypothesis of the massification of higher education in Latin America, which implies an institutional dynamic that promotes access, academic progress and graduation in higher education; (ii) the reduction in the importance of the economic and cultural conditions of the homes of origin in facilitating mobility, and a context of development and economic activity that facilitates the demand for professional positions; and (iii) the extent to which both factors can lead to a "surplus" of qualified workers in the Spanish case. The empirical work consisted of comparative studies using databases from Argentina and Spain focusing on the conditions of origin, the forms of transition to employment and the rewards of status (access to higher education) and/or economic gain.