



Franks, P. W., & Timpson, N. (2018). Genotype-based recall studies in complex cardiometabolic traits. *Circulation: Genomic and Precision Medicine*, 11(8), [e001947]. <https://doi.org/10.1161/CIRCGEN.118.001947>

Peer reviewed version

Link to published version (if available):
[10.1161/CIRCGEN.118.001947](https://doi.org/10.1161/CIRCGEN.118.001947)

[Link to publication record in Explore Bristol Research](#)
PDF-document

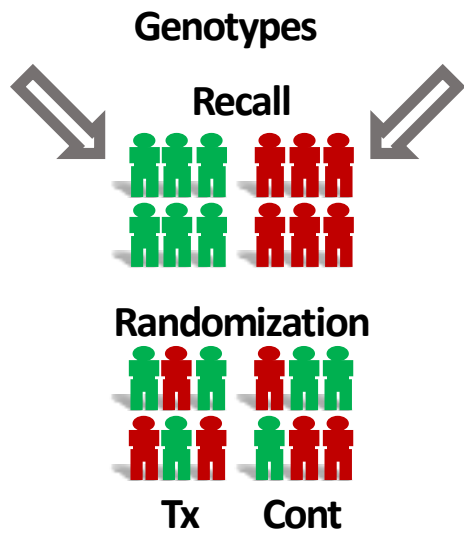
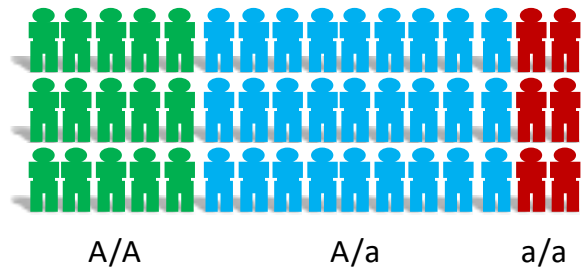
This is the final published version of the article (version of record). It first appeared online via AHA at <https://www.ahajournals.org/doi/10.1161/CIRCGEN.118.001947> . Please refer to any applicable terms of use of the publisher.

University of Bristol - Explore Bristol Research

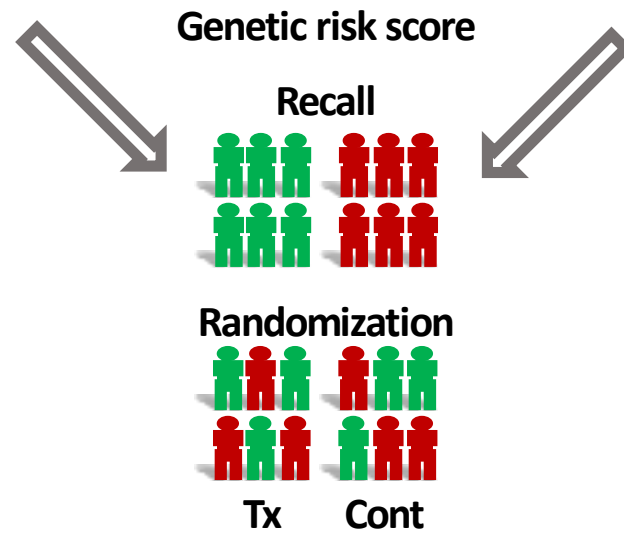
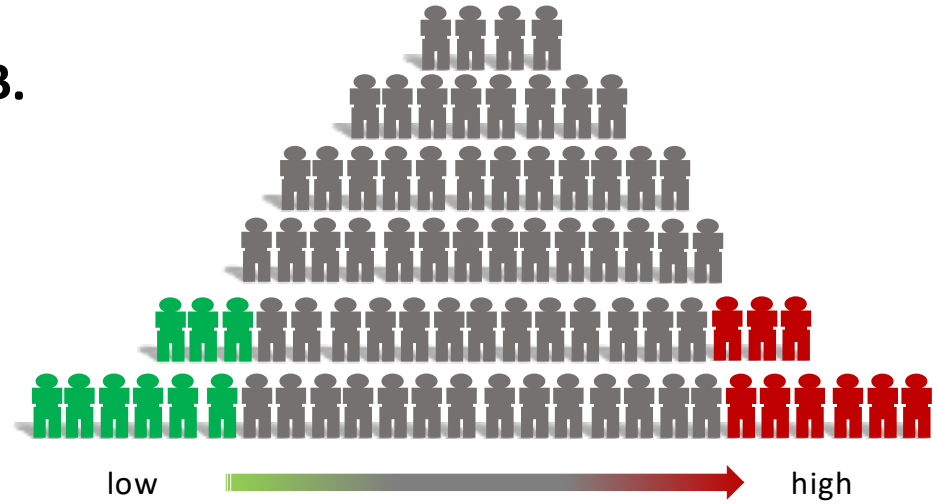
General rights

This document is made available in accordance with publisher policies. Please cite only the published version using the reference above. Full terms of use are available:
<http://www.bristol.ac.uk/pure/about/ebr-terms>

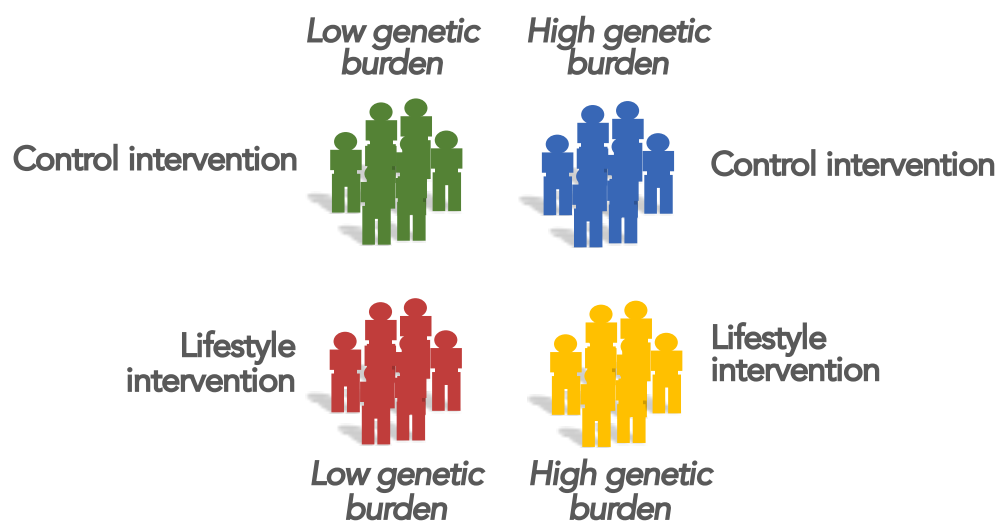
A.



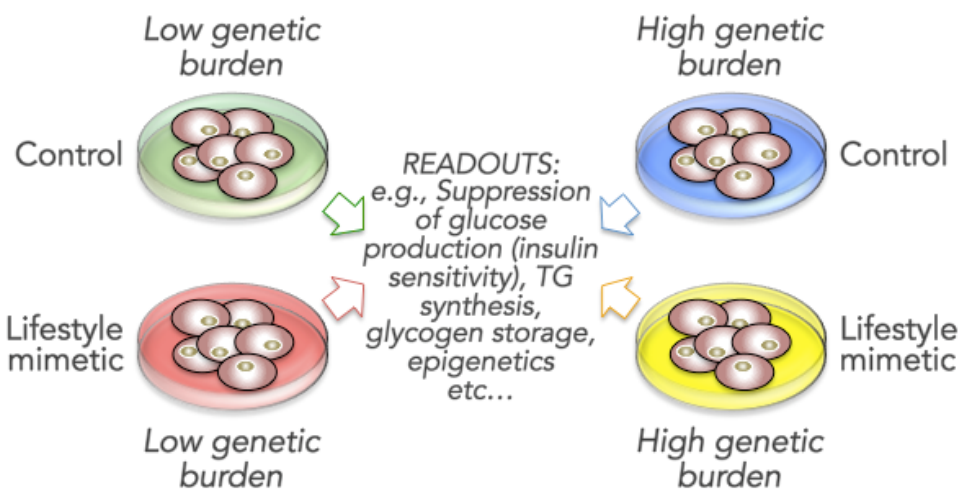
B.



GBR INTERVENTIONAL TRIAL



GENOME ENGINEERED CELLS



Reverse engineer phenotypes through gene editing in primary cells