



Integration of Clinical Variables for the Prediction of Late Distant Recurrence in Patients With Estrogen Receptor–Positive Breast Cancer Treated With 5 Years of Endocrine Therapy: CTS5

Mitch Dowsett, Ivana Sestak, Meredith M. Regan, Andrew Dodson, Giuseppe Viale, Beat Thürlimann, Marco Colleoni, and Jack Cuzick

Author affiliations and support information (if applicable) appear at the end of this article.

Published at jco.org on April 20, 2018.

Clinical trial information:
ISRCTN18233230, NCT00004205.

Corresponding author: Mitch Dowsett, PhD, Ralph Lauren Centre for Breast Cancer Research, Royal Marsden Hospital, London, SW3 6JJ United Kingdom; e-mail: mitch.dowsett@icr.ac.uk.

© 2018 by American Society of Clinical Oncology. Licensed under the Creative Commons Attribution 4.0 License.



0732-183X/18/3699-1/\$20.00

ABSTRACT

Purpose

Estimating risk of late distant recurrence (DR) is an important goal for managing women with hormone receptor–positive breast cancer after 5 years of endocrine treatment without recurrence. We developed and validated a simple clinicopathologic tool (Clinical Treatment Score post–5 years [CTS5]) to estimate residual risk of DR after 5 years of endocrine treatment.

Patients and Methods

The ATAC (Arimidex, Tamoxifen, Alone or in Combination) data set (N = 4,735) was used to create a prognostic score for post–5-year risk of DR. Validity of CTS5 (ATAC) was tested in the BIG 1-98 data set (N = 6,711). Time to late DR, 5 years after finishing scheduled endocrine therapy, was the primary end point. Cox regression models estimated the prognostic performance of CTS5 (ATAC).

Results

CTS5 (ATAC) was significantly prognostic for late DR in the ATAC cohort (hazard ratio, 2.47; 95% CI, 2.24 to 2.73; $P < .001$) and BIG 1-98 validation cohort (hazard ratio, 2.07; 95% CI, 1.88 to 2.28; $P < .001$). CTS5 (ATAC) risk stratification defined in the training cohort as low (< 5% DR risk, years 5 to 10), intermediate (5% to 10%), or high (> 10%) identified 43% of the validation cohort as low risk, with an observed DR rate of 3.6% (95% CI, 2.7% to 4.9%) during years 5 to 10. From years 5 to 10, 63% of node-negative patients were low risk, with a DR rate of 3.9% (95% CI, 2.9% to 5.3%), and 24% with one to three positive nodes were low risk, with a DR rate of 1.5% (95% CI, 0.5% to 3.8%). A final CTS5 for future use was derived from pooled data from ATAC and BIG 1-98.

Conclusion

CTS5 is a simple tool based on information that is readily available to all clinicians. CTS5 was validated as highly prognostic for late DR in the independent BIG 1-98 study. The final CTS5 algorithm identified 42% of women with < 1% per-year risk of DR who could be advised of the limited potential value of extended endocrine therapy.

J Clin Oncol 36. © 2018 by American Society of Clinical Oncology. Licensed under the Creative Commons Attribution 4.0 License: <http://creativecommons.org/licenses/by/4.0/>

INTRODUCTION

Women with estrogen receptor (ER) –positive primary breast cancer are generally offered adjuvant endocrine therapy for 5 years. More than 50% of recurrences occur after that time, and several studies have indicated that extending treatment beyond 5 years can improve disease outcome.^{1–5} However, this improvement is relatively modest, and extended therapy carries a risk of adverse effects. Few tools have been developed

for selecting patients as candidates for extended endocrine therapy or alternatively identifying those who might be spared such therapy. One approach is to identify patients whose risk after 5 years is so low that any benefit would be outweighed by potential adverse effects.

Clinicopathologic parameters such as tumor size, nodal status, and histopathologic grade are routinely used to estimate risk of breast cancer recurrence at diagnosis; we previously reported a clinical treatment score that integrates these factors to estimate prognosis.⁶ Some of these

ASSOCIATED CONTENT



Appendix
DOI: <https://doi.org/10.1200/JCO.2017.76.4258>



Data Supplement
DOI: <https://doi.org/10.1200/JCO.2017.76.4258>

DOI: <https://doi.org/10.1200/JCO.2017.76.4258>

factors have been reported to be associated with risk after 5 years; for example, we found nodal status was a powerful prognostic marker for late recurrence,^{7,8} whereas tumor size and particularly grade were less prognostic after 5 years. Recently, an overview analysis of > 60,000 women with ER-positive disease, who were scheduled to receive 5 years of endocrine therapy and remained disease free at 5 years, reported the subsequent risk of distant recurrence.⁹ Even in patients with T1N0 disease, the estimated risk of distant recurrence between years 5 and 20 was 10% for those with low, 13% for those with intermediate, and 17% for those with high histologic grades, respectively. Although these data unequivocally demonstrate the importance of these clinicopathologic factors, they include studies from 40 years ago, possibly limiting their relevance for contemporary patients with breast cancer. The data were presented largely as categories (eg, T1, T2), limiting precise estimates of risk for individual patients. Lastly, the largely tamoxifen-treated population did not allow assessment of possible differences between tamoxifen and aromatase inhibitors (AIs) with regard to long-term risk.

We aimed to develop and test the validity of a simple prognostic tool to estimate risk of late distant recurrence (Clinical Treatment Score post-5 years [CTS5]) on the basis of clinicopathologic parameters measured in virtually all patients with breast cancer at diagnosis. We used data from the ATAC (Arimidex, Tamoxifen, Alone or in Combination) trial¹⁰ as the training set and from the BIG (Breast International Group) 1-98 trial as the testing set.¹¹

PATIENTS AND METHODS

Study Populations

CTS5 (ATAC) was trained using data from the ATAC trial (International Standard Randomized Controlled Trial identifier ISRCTN18233230), in which postmenopausal women with ER-positive or ER-unknown early breast cancer were randomly assigned to receive anastrozole 1 mg per day, tamoxifen 20 mg per day, or a combination for 5 years.¹⁰ The combination arm was discontinued after the first report of trial results.¹² We included data from women with ER-positive breast cancer randomly assigned to receive anastrozole alone or tamoxifen alone, who were distant recurrence free after 5 years of follow-up and for whom all clinicopathologic data were available (N = 4,735; Appendix Fig A1, online only). Median follow-up was 9.8 years. Data from BIG 1-98 (ClinicalTrials.gov identifier NCT00004205) was used to validate CTS5 (ATAC). BIG 1-98 initially (1998 to 2000) randomly assigned postmenopausal women with hormone receptor-positive early-stage breast cancer to receive 5 years of letrozole 2.5 mg per day or tamoxifen 20 mg per day. Later (1999 to 2003), sequential therapy was also randomly assigned (2 years of letrozole followed by 3 years of tamoxifen or opposite sequence).^{11,13} Median follow-up was 8.1 years. For this analysis, all women were included who were distant recurrence free at 5 years and for whom all clinicopathologic data were available (N = 6,711; Appendix Fig A1). For both trials, women were included in the analysis regardless of whether they received chemotherapy.

Prognostic value of the following variables for post-5-year (late) distant recurrence was determined by univariable Cox regression analyses: nodes, tumor size (in millimeters), grade (1, 2, or 3), age at start of endocrine therapy (years), and type of assigned endocrine treatment. Type of endocrine treatment was not significant for late distant recurrence in univariable analyses and not included in the final model. The log hazard was almost linear for five nodal status groups (negative, one positive, two to three positive, four to nine positive, and > nine positive) but not for continuous tumor size alone. Therefore, a negative quadratic term was introduced, and tumor size was capped at 30 mm, where risk plateaued. The final CTS5 (ATAC) model included age (continuous), tumor size (continuous), quadratic

tumor size, nodal status (five groups: 0, negative; 1, one positive; 2, two to three positive; 3, four to nine positive; and 4, > nine positive), and grade (three groups: 1, low; 2, intermediate; and 3, high) and is given by:

$$\text{CTS5 (ATAC)} = 0.471 \times \text{nodes} + 0.980 \times (0.164 \times \text{size} - 0.003 \times \text{size}^2 + 0.312 \times \text{grade} + 0.03 \times \text{age})$$

A shrinkage factor of 0.980 for the nonnodal part of the score was calculated using a nested Cox model¹⁴ and applied to allow for the small amount of overfitting. Separate models developed for patients receiving chemotherapy or not did not perform significantly better for either group than a single model including all patients (data not shown).

Statistical Analyses

Analyses were performed according to a prespecified analysis plan, approved by both trial groups, and are summarized here. Full details are provided in the Appendix (online only). The primary end point was time to distant recurrence, defined as metastatic disease, excluding contralateral disease, and locoregional and ipsilateral recurrences. The end point was censored at last follow-up visit or death before distant recurrence such that risk is a pure risk calculation ignoring deaths.

Cox proportional hazards models were used to create the model in ATAC, and the CTS5 (ATAC) score was tested in BIG 1-98. Likelihood ratio statistics (LR- χ^2) and Kaplan-Meier survival estimates with corresponding 95% CIs were used to determine the prognostic performance of CTS5 (ATAC) in BIG 1-98. The 5- to 10-year distant recurrence risk groups were determined in ATAC and defined as: low risk, < 5%; intermediate risk, 5% to 10%; and

Table 1. Demographic and Clinical Characteristics According to Trial of Patients Distant Recurrence Free at 5 Years After Random Assignment

Characteristic	No. (%)		P
	ATAC (n = 4,735)	BIG 1-98 (n = 6,711)	
Age, years			< .001
Median	64	61	
IQR	57-71	56-67	
Nodal status (No. of positive nodes)			< .001*
Negative	3,219 (68.0)	4,090 (60.9)	
1	643 (13.6)	1,164 (17.3)	
2-3	523 (11.1)	780 (11.6)	
4-9	277 (5.9)	506 (7.5)	
9+	73 (1.5)	171 (2.6)	
Grade			.007*
Well	1,149 (24.3)	1,524 (22.7)	
Intermediate	2,387 (50.4)	3,828 (57.0)	
Poor	1,199 (25.3)	1,359 (20.3)	
Tumor size, mm			.44*
< 10	864 (19.7)	1,172 (17.5)	
10-20	2,356 (49.8)	3,206 (47.8)	
20-30	1,028 (21.7)	1,571 (23.4)	
> 30	487 (10.3)	762 (11.4)	
Chemotherapy	923 (19.5)	1,627 (24.2)	< .001
Treatment			
Tamoxifen 5 years	2,374 (50.1)	1,989 (29.6)	
Anastrozole or letrozole 5 years	2,361 (49.9)	2,042 (30.4)	
Letrozole 2 years and tamoxifen 3 years	—	1,335 (19.9)	
Tamoxifen 2 years and letrozole 3 years	—	1,345 (20.0)	
Distant recurrence (> 5 years)	330 (7.0)	370 (5.5)	.014
Annual rate, %	0.79	0.66	
95% CI, %	0.71 to 0.88	0.60 to 0.73	

NOTE. Random assignment indicates start of adjuvant endocrine therapy. Abbreviations: ATAC, Arimidex, Tamoxifen, Alone or Combination; BIG, Breast International Group; IQR, interquartile range.

*P trend.

high risk, > 10%. To compare the prognostic performance of CTS5 (ATAC) between ATAC and BIG 1-98 trials, CTS5 (ATAC) was normalized to have unit variance, and hazard ratios (HRs) and associated 95% CIs were estimated from Cox models. All statistical analyses were two sided, and $P < .05$ was regarded as statistically significant. We compared the newly developed CTS5 (ATAC) with the published CTS (termed CTS0 here) developed for estimating prognosis from the time of disease presentation.⁶ All analyses were performed with STATA software (version 13.1; College Station, TX).

RESULTS

The ATAC training set and the BIG 1-98 test set consisted of 4,735 and 6,711 postmenopausal patients, respectively, assigned to receive 5 years of endocrine therapy (Table 1). Women in the ATAC cohort were significantly older by an average of approximately 3 years and had more node-negative disease (68% v 61%) and more grade 3 tumors (25% v 20%), and fewer women received adjuvant chemotherapy compared with women in the BIG 1-98 set (19.5% v 24.2%). Tumor size was similar between the two trials. In the training set, 330 (7.0%) late distant recurrences were recorded, with an annual hazard rate of 0.79% (95% CI, 0.71% to 0.88%). In BIG 1-98, a total of 370 (5.5%) late distant recurrences occurred, with an annual hazard rate of 0.66% (95% CI, 0.60% to 0.73%), which was significantly lower than in ATAC ($P = .014$; Table 1).

Training Set (ATAC)

Appendix Table A1 (online only) shows the comparisons of the published CTS0⁶ with CTS5 (ATAC) for prediction of late distant

recurrence between years 5 and 10. CTS5 (ATAC) provided significantly more prognostic information compared with CTS0 (CTS5 [ATAC]: $LR-\chi^2 = 308.6$ [5 df]; CTS0: $LR-\chi^2 = 285.0$ [9 df]), and larger effect sizes were observed (HR, 2.47 v 2.04, respectively). CTS5 (ATAC) was slightly more prognostic in chemotherapy-free women compared with those who received chemotherapy (HR, 2.50; 95% CI, 2.22 to 2.81 v 2.39; 95% CI, 1.94 to 2.95), but the interaction with chemotherapy use was not significant ($P = .76$).

The prognostic value of CTS5 (ATAC) for risk of distant recurrence (\pm 95% CI) between years 5 and 10 is shown in Figure 1A for the whole population and in Figure 1B for node-positive and node-negative populations separately. Cutoffs in the ATAC population to separate low-, intermediate-, and high-risk populations were 4.35 and 5.02, respectively (Fig 1A). As expected, most but not all low-risk patients were node negative, and conversely, most high-risk patients were node positive (Fig 1B).

Overall, 42.0% were categorized as low risk, 31.3% as intermediate risk, and 26.7% as high risk for late distant recurrence (Table 2). Those categorized as low risk had a mean 5- to 10-year distant recurrence risk of 2.5% (95% CI, 1.8% to 3.4%), as compared with 7.7% (95% CI, 6.3% to 9.5%) for intermediate-risk and 20.3% (95% CI, 17.2% to 24.0%) for high-risk groups (Fig 2). Those at intermediate or high risk had a 3.42-fold (95% CI, 2.37- to 4.95-fold) or 9.43-fold (95% CI, 6.71- to 13.25-fold), respectively, higher risk of late distant recurrence than the low-risk group. Notably only two of 133 patients with one to three positive nodes and categorized as low risk had a distant recurrence between years 5 and 10 (Table 2). Virtually all patients with \geq four positive nodes were categorized as high risk. Approximately one fifth of

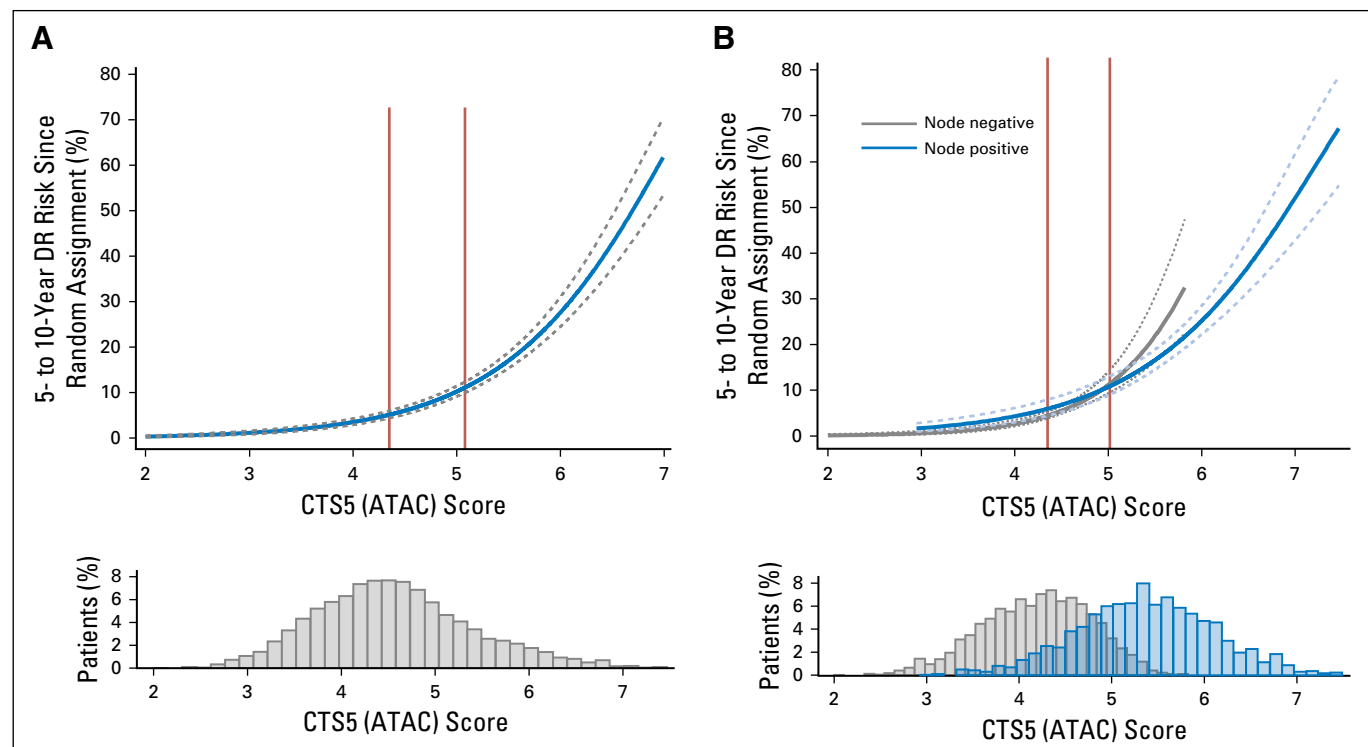


Fig 1. Predicted distant recurrence (DR) risk in years 5 to 10 since random assignment (start of adjuvant endocrine therapy) for ATAC (Arimidex, Tamoxifen, Alone or Combination) trial (A) overall population and (B) node-negative and node-positive patients. Solid vertical lines indicate cutoff points for risk groups. CTS5, Clinical Treatment Score post-5 years.

Table 2. Distribution of Risk Categories in the ATAC and BIG 1-98 Cohorts According to Tumor Size, Grade, and Nodal Involvement

Characteristic	No. (%)			Total No.
	Low Risk	Intermediate Risk	High Risk	
ATAC				
Total	1,989 (42.0)	1,484 (31.3)	1,262 (20.7)	4,735
Size, mm				
< 10	808 (40.6)	41 (2.8)	15 (1.2)	864
10-20	1,082 (54.4)	872 (58.8)	402 (31.9)	2,356
> 20	99 (5.0)	571 (38.5)	845 (67.0)	1,515
Grade				
Well	806 (70.1)	235 (20.6)	108 (9.4)	1,149
Intermediate	952 (39.9)	861 (36.1)	574 (24.0)	2,387
Poor	231 (19.3)	388 (32.4)	580 (48.4)	1,199
Nodal involvement (No. of positive nodes)				
None	1,856 (57.7)	1,138 (35.4)	225 (7.0)	3,219
1	112 (17.4)	255 (39.7)	276 (42.9)	643
2-3	21 (4.0)	84 (16.1)	418 (79.9)	523
4-9	0	6 (2.2)	271 (97.8)	277
> 9	0	1 (1.4)	72 (98.6)	73
BIG 1-98				
Total	2,861 (42.6)	2,136 (31.8)	1,714 (25.5)	6,711
Size, mm				
< 10	1,081 (37.8)	65 (3.0)	26 (1.5)	1,172
10-20	1,585 (55.4)	1,103 (51.6)	518 (30.2)	3,206
> 20	195 (6.8)	968 (45.3)	1,170 (68.3)	2,333
Grade				
Well	1,077 (70.7)	308 (20.2)	139 (9.1)	1,524
Intermediate	1,575 (41.1)	1,301 (34.0)	952 (24.9)	3,828
Poor	209 (15.4)	527 (38.8)	623 (45.8)	1,359
Nodal involvement (No. of positive nodes)				
None	2,555 (62.5)	1,398 (34.2)	137 (3.3)	4,090
1	277 (23.8)	541 (46.5)	346 (29.7)	1,164
2-3	27 (3.5)	175 (22.4)	578 (74.1)	780
4-9	2 (0.4)	21 (4.2)	483 (95.5)	506
> 9	0	1 (0.6)	170 (99.4)	171

Abbreviations: ATAC, Arimidex, Tamoxifen, Alone or Combination; BIG, Breast International Group.

patients with two or three positive nodes had risk categorized as low or intermediate, whereas 42.9% with one positive node were categorized as high risk. Only 57.7% of node-negative patients were categorized as low risk.

A total of 77 patients experienced local recurrence but no distant recurrence in years 0 to 5, with CTS5 (ATAC) ranking most as intermediate or high risk. Among these 77, CTS5 (ATAC) predicted 24.3 distant recurrences, and 25 were observed. Exclusion of these 77 patients marginally increased the HR for one standard deviation change, from 2.47 (95% CI, 2.24 to 2.73) to 2.53 (95% CI, 2.26 to 2.82).

Validation Set (BIG 1-98)

CTS5 (ATAC) performed non-significantly better in the validation BIG 1-98 cohort than CTS0 (CTS5 [ATAC]: HR 2.07; 95% CI, 1.88 to 2.28; LR- $\chi^2 = 212.1$ [1 *df*] v CTS0: HR 1.84; 95% CI, 1.70 to 1.98; LR- $\chi^2 = 214.9$ [1 *df*]). CTS5 (ATAC) was significantly prognostic in women who did not receive chemotherapy (HR, 2.20; 95% CI, 1.96 to 2.47; $P < .001$; LR- $\chi^2 = 168.7$ [1 *df*]) and more so when compared with those who did (HR, 1.76; 95% CI, 1.46 to 2.13; $P < .001$; LR- $\chi^2 = 34.7$ [1 *df*]; Appendix Table A1), but the interaction with chemotherapy was not statistically significant ($P = .06$).

The number of observed distant recurrences was compared with those expected by CTS5 (ATAC) in deciles of risk for node-negative and node-positive patients, separately (Figs 3A and 3B). In

each case, there were no significant differences between the observed and expected numbers for any of the deciles. The correlation (r) between the observed versus expected numbers across the deciles was 0.89 for node-negative and 0.95 for node-positive groups. Using CTS0, a number of deciles showed significant χ^2 values (Appendix Fig A2, online only), and the r values were also lower, at 0.78 and 0.87, respectively. Concordance between the estimated and actual distant recurrence rates was also shown to be better with CTS5 using the Goran-Heller C-index (CTS5 [ATAC], 0.678; CTS0, 0.656).

We used predefined cutoff points of 4.35 and 5.02 from ATAC to determine risk groups for late distant recurrence in BIG 1-98 (Figs 1A and 1B). These cut points intersected the risk curves for BIG 1-98 at 5.4% and 9.9% for node-negative patients and 5.5% and 9.5% for node-positive patients, respectively, and therefore were strongly validated by this test set. The distribution of patients in low-, intermediate-, and high-risk groups was also similar in the BIG 1-98 data set to that observed in the training set (Table 2). The mean 5- to 10-year distant recurrence risk of patients in BIG 1-98 in those three categories was 3.6% (95% CI, 2.7% to 4.9%), 6.9% (95% CI, 5.6% to 8.5%), and 17.3% (95% CI, 14.8% to 20.1%), respectively (Table 2; Fig 2). Thus, for each category, the actual mean risk for each category fitted well with that of the predicted risk. The curves for node-negative and node-positive women were almost identical in the CTS5 (ATAC) regions of overlap in BIG 1-98.

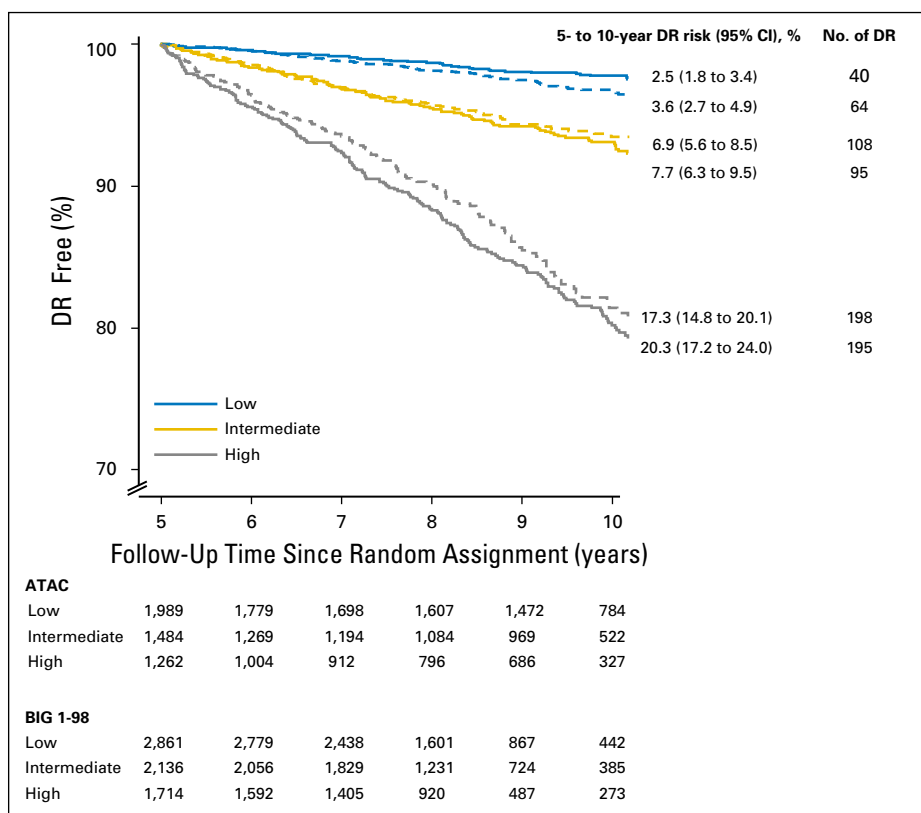


Fig 2. Kaplan-Meier curves and 5- to 10-year distant recurrence (DR) rates since random assignment for the overall population according to trial (solid lines, ATAC [Arimidex, Tamoxifen, Alone or Combination]; dashed lines, BIG [Breast International Group] 1-98).

Significant separation between low- versus intermediate-risk groups (HR, 2.19; 95% CI, 1.61 to 2.98) and low- versus high-risk groups (HR, 5.33; 95% CI, 4.02 to 7.07) was observed (Fig 2). Notably, only four of 304 patients with one to three positive nodes and categorized as low risk had a recurrence between years 5 and 10. As with the ATAC data set, in BIG 1-98, virtually all patients with ≥ four positive nodes were categorized as high risk (Table 2). The distribution of patients in the risk categories across histologic grades and nodal categories was similar between ATAC and BIG 1-98. Again, approximately one fifth of patients with two or three positive nodes had risk categorized as low or intermediate, but a somewhat smaller proportion of patients with one positive node were categorized as high risk (29.7% v 42.9%). In BIG 1-98, 62.5% of node-negative patients were categorized as low risk, compared with 57.7% in ATAC.

Combined ATAC and BIG 1-98 Sets

To increase the precision of the risk estimates, we combined the ATAC and BIG 1-98 data sets such that new coefficients were fitted using the same variables as in the training or validation cohort. The final CTS5 is represented by the following model:

$$CTS5 = 0.438 \times \text{nodes} + 0.988 \times (0.093 \times \text{size} - 0.001 \times \text{size}^2 + 0.375 \times \text{grade} + 0.017 \times \text{age})$$

The relationship between the final CTS5 and risk of distant recurrence is shown in Figure 4, with a table of CTS5 values that relate to one-unit intervals of distant recurrence risk. New cutoff points for low- (CTS5 < 3.13), intermediate- (3.13 to 3.86), and high-risk (> 3.86) groups were derived from this final model. An example of the calculation of CTS5 and the associated risk estimate is given in Figure 4.

DISCUSSION

Over the last three decades, there have been major increases in invasive breast cancer incidence in Western countries; in the United States, it was estimated that > 250,000 women would be diagnosed with invasive breast cancer in 2017,¹⁵ with a large majority of cases localized to the breast. Approximately 80% of patients are now diagnosed as ER positive, and almost all of these are prescribed 5 years of adjuvant endocrine therapy. Although such treatment markedly reduces mortality (eg, by approximately 30% with 5 years of tamoxifen and approximately 40% with an AI in postmenopausal women), recurrences continue to occur after the 5-years treatment ends. The observation that these events can be decreased by continued treatment^{1,2,16} means that decisions about whether to continue with therapy at 5 years are at the forefront of patient management at that time. We expect that the CTS5 tool reported and validated here will prove helpful to oncologists and patients in making a decision about continued treatment. The integration of clinical pathologic features that are measured in all patients at diagnosis should mean that risk is calculable at little expense globally; the table in Figure 4 will allow a direct readout, and an online tool will be provided to facilitate estimates of continuous risk.

Strengths of the study include its use of two large sets of registration-standard randomized clinical trial data with detailed clinical follow-up for 10 years. The ATAC training set included the AI anastrozole as well as tamoxifen as adjuvant treatment, and although the specific endocrine adjuvant therapy did not feature in the algorithm, this allowed us to infer that the score would be

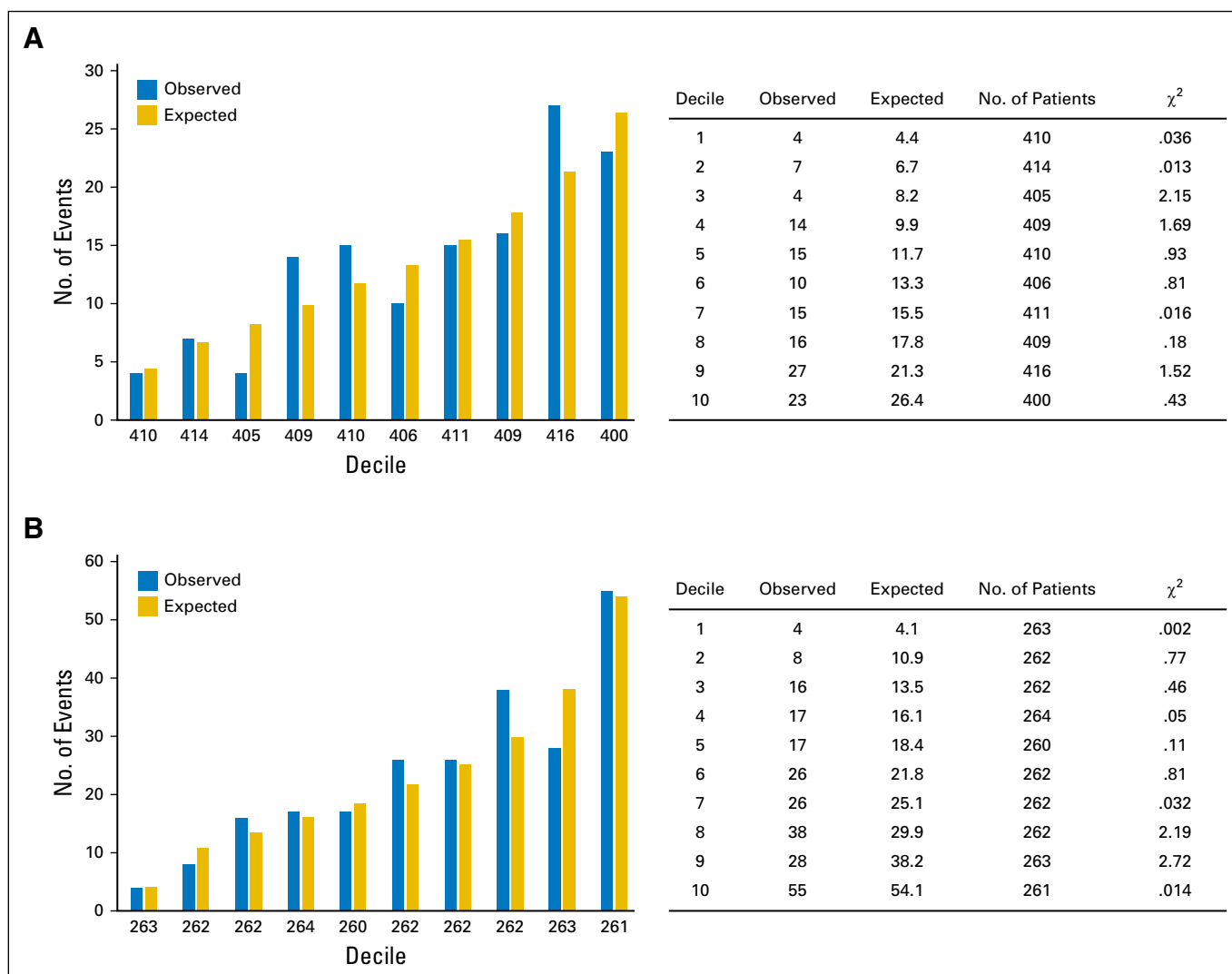


Fig 3. Observed versus expected number of events and χ^2 values in the BIG (Breast International Group) 1-98 trial according to deciles of Clinical Treatment Score post-5 years (ATAC [Arimidex, Tamoxifen, Alone or Combination]) for (A) node-negative and (B) node-positive patients. None of the χ^2 were statistically significant.

valid for both tamoxifen- and AI-treated patients. This is consistent with the overview analysis of AIs versus tamoxifen.¹⁷ Median 5-year follow-up for the two trials combined occurred approximately 12 years ago. Therefore, it is possible that our risk estimates may not accurately reflect those of current patients reaching 5 years. However, the only major change to the management of primary ER-positive breast cancer since the completion of recruitment to ATAC and BIG 1-98 has been the introduction of trastuzumab for patients with human epidermal growth factor receptor 2–positive disease. CTS5 should be applied with caution in such patients until validated specifically for that population. All patients in the two cohorts were postmenopausal at diagnosis. Although risk of distant recurrence post-5 years has been reported to be similar across age groups, other than for the small group of patients diagnosed at age < 35 years,⁹ the present algorithm cannot be extended to premenopausal patients without further validation.

Neither trial collected complete information on the use of extended adjuvant endocrine therapy. However, the first significant data supporting the use of an AI after tamoxifen¹ emerged close to the end

of the treatment period for the trials, and we estimate that < 1% of tamoxifen-treated patients in ATAC and < 5% in BIG 1-98 received such extended therapy. This would be expected to have minimal impact on our estimates of risk when extended therapy is not used.

Also similar to the report by the Early Breast Cancer Trialists' Collaborative Group, we found that whether patients had received chemotherapy at presentation had no significant impact on residual risk of recurrence when taking the other factors into account. This may relate in part to the observation that the bulk of the benefit from adjuvant chemotherapy is shown over the first 5 years of follow-up.¹⁸

The categories of low, intermediate, and high risk were chosen to closely parallel those defined by several molecular profiling tools for managing patients with ER-positive breast cancer.¹⁹⁻²¹ However, those tools are applied immediately after surgery, largely in making the decision of whether to administer adjuvant chemotherapy; what is considered low or high risk in that setting may not be the same when considering the appropriateness of extended adjuvant therapy. In discussions with individual patients whose preferences for continuing

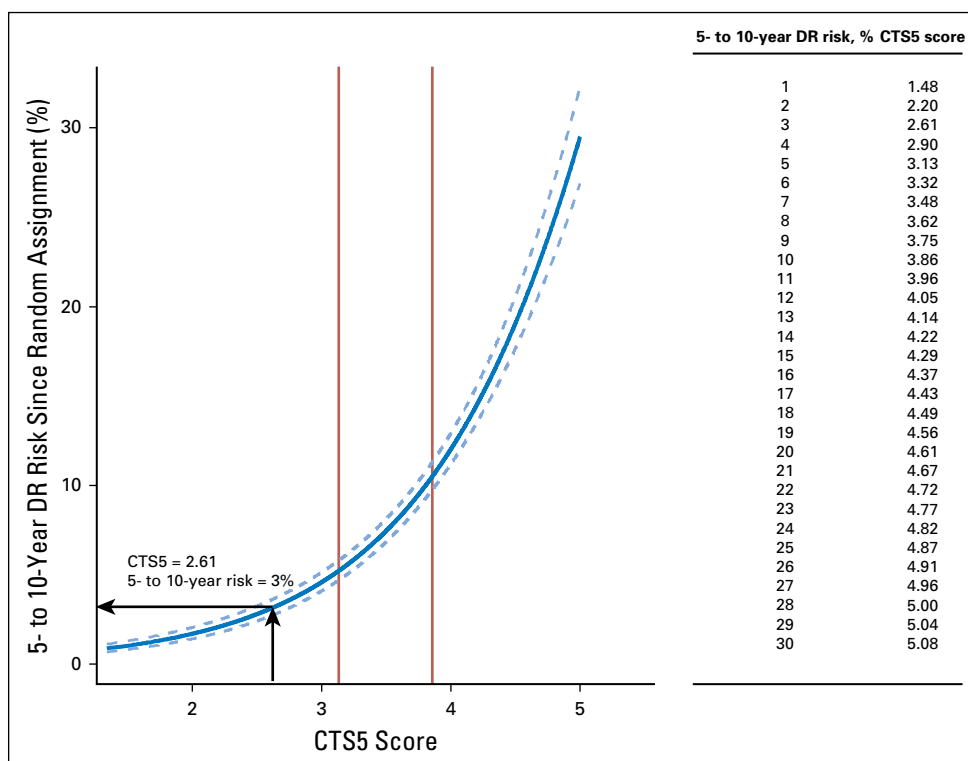


Fig 4. Predicted 5- to 10-year distant recurrence (DR) risk since random assignment and Clinical Treatment Score post-5 years (CTS5) values for the combined data set. Solid vertical lines indicate cutoff points for risk groups. Arrows indicate the CTS5 and equivalent 5- to 10-year risks of a patient age 54 years with a 12-mm, node-negative, grade 2 tumor. Using the formula $CTS5 = 0.438 \times \text{nodes} + 0.988 \times (0.093 \times \text{size} - 0.001 \times \text{size}^2 + 0.375 \times \text{grade} + 0.017 \times \text{age})$, her CTS5 score is 2.61 and her 5- to 10-year risk of DR is 3%.

or ceasing endocrine therapy at 5 years are likely to vary markedly, the use of a continuous risk estimate from CTS5 is likely to be more informative than the categorical estimates (ie, low, intermediate, and high) used here for illustrative and comparative purposes.

The agreement between the ATAC and BIG1-98 data was almost complete within the low- and intermediate-risk categories but somewhat less beyond the intermediate/high cutoff. Thus, the instrument may be used with greatest confidence in defining 5- to 10-year distant recurrence risk when < 10% and will be of greatest use in assessing the potential value of extended therapy on the basis of risk estimates below that level.

Our report deals only with clinicopathologic profiles. Multigene expression profiles have significantly increased the ability to predict distant recurrence over 10 years after diagnosis in ER-positive breast cancer.²² Several of these signatures, such as the Oncotype Dx recurrence score,²³ PAM50-based Prosigna risk of recurrence score,^{19,24} Breast Cancer Index,^{25,26} EndoPredict test,^{20,27,28} and Netherlands Cancer Institute 70-gene signature,²⁹ are commercially available and endorsed by several guidelines.³⁰⁻³³ Although a number of them estimate risk of late as well as early recurrence, these tests were developed to manage patients with breast cancer at diagnosis and have not been calibrated for application 5 years after diagnosis. Over the first 10 years of follow-up, clinicopathologic and molecular factors have nearly completely

independent prognostic value, and their optimal use for prognosis requires their integration.³⁴ It is near certain that the same is true for the 5- to 10-year period. CTS5 provides a straightforward starting point for combining with molecular scores.

AUTHORS' DISCLOSURES OF POTENTIAL CONFLICTS OF INTEREST

Disclosures provided by the authors are available with this article at jco.org.

AUTHOR CONTRIBUTIONS

- Conception and design:** Mitch Dowsett, Ivana Sestak, Meredith M. Regan, Beat Thürlimann, Marco Colleoni, Jack Czuzick
- Provision of study materials or patients:** Beat Thürlimann
- Collection and assembly of data:** Ivana Sestak, Meredith M. Regan, Giuseppe Viale
- Data analysis and interpretation:** Mitch Dowsett, Ivana Sestak, Meredith M. Regan, Andrew Dodson, Beat Thürlimann, Marco Colleoni, Jack Czuzick
- Manuscript writing:** All authors
- Final approval of manuscript:** All authors
- Accountable for all aspects of the work:** All authors

REFERENCES

1. Goss PE, Ingle JN, Pritchard KI, et al: Extending aromatase-inhibitor adjuvant therapy to 10 years. *N Engl J Med* 375:209-219, 2016
2. Davies C, Pan H, Godwin J, et al: Long-term effects of continuing adjuvant tamoxifen to 10 years

- versus stopping at 5 years after diagnosis of oestrogen receptor-positive breast cancer: ATLAS, a randomised trial. *Lancet* 381:805-816, 2013
3. Mamounas E, Bandos H, Lembersky BC, et al: A randomized, double-blinded, placebo-controlled clinical trial of extended adjuvant endocrine therapy (tx) with letrozole (L) in postmenopausal women with hormone-receptor (+) breast cancer (BC) who have

- completed previous adjuvant tx with an aromatase inhibitor (AI): Results from NRG Oncology/NSABP B-42. *Cancer Res* 77, 2017 (suppl 4; abstr S1-05)
4. Blok EJ, Kroep JR, Kranenbarg EM-K, et al: Optimal duration of extended adjuvant endocrine therapy for early breast cancer; results of the IDEAL trial (BOOG 2006-05). *J Natl Cancer Inst* 110:djx134, 2018

5. Gray RG, Rea D, Handley K, et al: aTTom: Long-term effects of continuing adjuvant tamoxifen to 10 years versus stopping at 5 years in 6,953 women with early breast cancer. *J Clin Oncol* 31, 2013 (suppl; abstr 5)
6. Cuzick J, Dowsett M, Pineda S, et al: Prognostic value of a combined estrogen receptor, progesterone receptor, Ki-67, and human epidermal growth factor receptor 2 immunohistochemical score and comparison with the Genomic Health recurrence score in early breast cancer. *J Clin Oncol* 29:4273-4278, 2011
7. Sestak I, Dowsett M, Zabaglo L, et al: Factors predicting late recurrence for estrogen receptor-positive breast cancer. *J Natl Cancer Inst* 105:1504-1511, 2013
8. Mittempergher L, Saghatchian M, Wolf DM, et al: A gene signature for late distant metastasis in breast cancer identifies a potential mechanism of late recurrences. *Mol Oncol* 7:987-999, 2013
9. Pan H, Gray R, Braybrooke JP, et al: 20-year recurrence risks for patients with estrogen receptor-positive breast cancer after adjuvant endocrine treatment for only 5 years. *N Engl J Med* 377:1836-1846, 2017
10. Cuzick J, Sestak I, Baum M, et al: Effect of anastrozole and tamoxifen as adjuvant treatment for early-stage breast cancer: 10-year analysis of the ATAC trial. *Lancet Oncol* 11:1135-1141, 2010
11. Regan MM, Neven P, Giobbie-Hurder A, et al: Assessment of letrozole and tamoxifen alone and in sequence for postmenopausal women with steroid hormone receptor-positive breast cancer: The BIG 1-98 randomised clinical trial at 8.1 years median follow-up. *Lancet Oncol* 12:1101-1108, 2011
12. Baum M, Budzar AU, Cuzick J, et al: Anastrozole alone or in combination with tamoxifen versus tamoxifen alone for adjuvant treatment of postmenopausal women with early breast cancer: First results of the ATAC randomised trial. *Lancet* 359:2131-2139, 2002
13. Colleoni M, Giobbie-Hurder A, Regan MM, et al: Analyses adjusting for selective crossover show improved overall survival with adjuvant letrozole compared with tamoxifen in the BIG 1-98 study. *J Clin Oncol* 29:1117-1124, 2011
14. Van Houwelingen JC, Le Cessie S: Predictive value of statistical models. *Stat Med* 9:1303-1325, 1990
15. American Cancer Society: Cancer Facts and Figures 2017. Atlanta, GA, American Cancer Society, 2017
16. Goss PE, Ingle JN, Pater JL, et al: Late extended adjuvant treatment with letrozole improves outcome in women with early-stage breast cancer who complete 5 years of tamoxifen. *J Clin Oncol* 26:1948-1955, 2008
17. Early Breast Cancer Trialists' Collaborative Group (EBCTCG): Aromatase inhibitors versus tamoxifen in early breast cancer: Patient-level meta-analysis of the randomised trials. *Lancet* 386:1341-1352, 2015
18. Early Breast Cancer Trialists' Collaborative Group (EBCTCG): Effects of chemotherapy and hormonal therapy for early breast cancer on recurrence and 15-year survival: An overview of the randomised trials. *Lancet* 365:1687-1717, 2005
19. Dowsett M, Sestak I, Lopez-Knowles E, et al: Comparison of PAM50 risk of recurrence score with oncotype DX and IHC4 for predicting risk of distant recurrence after endocrine therapy. *J Clin Oncol* 31:2783-2790, 2013
20. Buus R, Sestak I, Kronenwett R, et al: Comparison of EndoPredict and EPclin with Oncotype DX recurrence score for prediction of risk of distant recurrence after endocrine therapy. *J Natl Cancer Inst* 108:djw149, 2016
21. Sgroi DC, Sestak I, Cuzick J, et al: Prediction of late distant recurrence in patients with oestrogen-receptor-positive breast cancer: A prospective comparison of the breast-cancer index (BCI) assay, 21-gene recurrence score, and IHC4 in the Trans-ATAC study population. *Lancet Oncol* 14:1067-1076, 2013
22. Massagué J: Sorting out breast-cancer gene signatures. *N Engl J Med* 356:294-297, 2007
23. Paik S, Shak S, Tang G, et al: A multigene assay to predict recurrence of tamoxifen-treated, node-negative breast cancer. *N Engl J Med* 351:2817-2826, 2004
24. Nielsen TO, Parker JS, Leung S, et al: A comparison of PAM50 intrinsic subtyping with immunohistochemistry and clinical prognostic factors in tamoxifen-treated estrogen receptor-positive breast cancer. *Clin Cancer Res* 16:5222-5232, 2010
25. Sgroi DC, Carney E, Zarrella E, et al: Prediction of late disease recurrence and extended adjuvant letrozole benefit by the HOXB13/IL17BR biomarker. *J Natl Cancer Inst* 105:1036-1042, 2013
26. Zhang Y, Schnabel CA, Schroeder BE, et al: Breast cancer index identifies early-stage estrogen receptor-positive breast cancer patients at risk for early- and late-distant recurrence. *Clin Cancer Res* 19:4196-4205, 2013
27. Dubsy P, Brase JC, Jakesz R, et al: The EndoPredict score identifies late distant metastases in ER+/HER2- breast cancer patients. *Brit J Cancer* 109:2959-2964, 2013
28. Filipits M, Rudas M, Jakesz R, et al: A new molecular predictor of distant recurrence in ER-positive, HER2-negative breast cancer adds independent information to conventional clinical risk factors. *Clin Cancer Res* 17:6012-6020, 2011
29. Cardoso F, van't Veer LJ, Bogaerts J, et al: 70-gene signature as an aid to treatment decisions in early-stage breast cancer. *N Engl J Med* 375:717-729, 2016
30. Harris LN, Ismaila N, McShane LM, et al: Use of biomarkers to guide decisions on adjuvant systemic therapy for women with early-stage invasive breast cancer: American Society of Clinical Oncology clinical practice guideline. *J Clin Oncol* 34:1134-1150, 2016
31. Duffy MJ, Harbeck N, Nap M, et al: Clinical use of biomarkers in breast cancer: Updated guidelines from the European Group on Tumor Markers (EGTM). *Eur J Cancer* 75:284-298, 2017
32. Coates AS, Winer EP, Goldhirsch A, et al: Tailoring therapies: Improving the management of early breast cancer—St Gallen International Expert Consensus on the Primary Therapy of Early Breast Cancer 2015. *Ann Oncol* 26:1533-1546, 2015
33. Senkus E, Kyriakides S, Ohno S, et al: Primary breast cancer: ESMO clinical practice guidelines for diagnosis, treatment and follow-up. *Ann Oncol* 26:v8-v30, 2015 (suppl 5)
34. Sestak I, Buus R, Cuzick J, et al: Comparison of the performance of 6 prognostic signatures for estrogen receptor-positive breast cancer. A secondary analysis of a randomised trial. *JAMA Oncol*. [10.1001/jamaoncol.2017.5524](https://doi.org/10.1001/jamaoncol.2017.5524) [Epub ahead of print]

Affiliations

Mitch Dowsett and Andrew Dodson, Royal Marsden Hospital; Mitch Dowsett, Institute of Cancer Research; Ivana Sestak and Jack Cuzick, Wolfson Institute of Preventive Medicine, Queen Mary University of London, London, United Kingdom; Meredith M. Regan, Dana Farber Cancer Institute and Harvard Medical School, Boston, MA; Giuseppe Viale, University of Milan; Guiseppe Viale and Marco Colleoni, European Institute of Oncology, Milan, Italy; Beat Thürlimann, Kantonsspital St Gallen, St Gallen, and International Breast Cancer Study Group and Swiss Group for Clinical Cancer Research, Berne, Switzerland.

Support

Supported by the Royal Marsden National Institute of Health Biomedical Research Centre, Breast Cancer Now Grant No. CTR-Q4-Y1, Cancer Research UK Grant No. C569/A16891, and Susan G. Komen for the Cure Promise Grant No. KG080081 (M.M.R., G.V.). The BIG 1-98 trial was supported by Novartis. The International Breast Cancer Study Group, which coordinated the BIG 1-98 trial, was also supported by the Swedish Cancer Society, Swedish Research Council, Cancer Council Australia, Australia and New Zealand Breast Cancer Trials Group, Frontier Science and Technology Research Foundation, Swiss Group for Clinical Cancer Research, Cancer Research Switzerland/Oncosuisse, and Foundation for Clinical Cancer Research of Eastern Switzerland.

Prior Presentation

Presented orally at the 2017 San Antonio Breast Cancer Symposium, San Antonio, TX, December 5-9, 2017.

AUTHORS' DISCLOSURES OF POTENTIAL CONFLICTS OF INTEREST

Integration of Clinical Variables for the Prediction of Late Distant Recurrence in Patients With Estrogen Receptor–Positive Breast Cancer Treated With 5 Years of Endocrine Therapy: CTS5

The following represents disclosure information provided by authors of this manuscript. All relationships are considered compensated. Relationships are self-held unless noted. I = Immediate Family Member, Inst = My Institution. Relationships may not relate to the subject matter of this manuscript. For more information about ASCO's conflict of interest policy, please refer to www.asco.org/rwc or ascopubs.org/jco/site/ifc.

Mitch Dowsett

Honoraria: Pfizer, Myriad Genetics, Roche

Consulting or Advisory Role: Roche/Genentech, GTx, Radius Health

Research Funding: AstraZeneca (Inst), Novartis (Inst), Pfizer (Inst), Radius Health (Inst)

Other Relationship: Institute of Cancer Research Rewards for Inventors

Ivana Sestak

Honoraria: Myriad Genetics, NanoString Technologies

Consulting or Advisory Role: Myriad Genetics

Meredith M. Regan

Consulting or Advisory Role: Merck, Ipsen (Inst)

Research Funding: Veridex (Inst), OncoGenex (Inst), Pfizer (Inst), Ipsen (Inst), Novartis (Inst), Merck (Inst), Ferring Pharmaceuticals (Inst), Celgene (Inst), AstraZeneca (Inst), Pierre Fabre (Inst), Bristol-Myers Squibb (Inst)

Andrew Dodson

No relationship to disclose

Giuseppe Viale

Honoraria: Merck Sharp & Dohme Oncology

Consulting or Advisory Role: DAKO, Roche/Genentech, AstraZeneca, Bristol-Myers Squibb, Astellas Pharma

Research Funding: Roche/Genentech, Ventana Medical Systems (Inst)

Travel, Accommodations, Expenses: Roche, Celgene

Beat Thürlimann

Stock or Other Ownership: Roche, Novartis

Honoraria: Roche

Consulting or Advisory Role: Roche, Eli Lilly, Amgen, Pfizer, AstraZeneca

Expert Testimony: AstraZeneca

Travel, Accommodations, Expenses: Roche

Marco Colleoni

Honoraria: Novartis

Consulting or Advisory Role: Pierre Fabre, Pfizer, OBI Pharma, Puma Biotechnology, Celldex, AstraZeneca

Jack Cuzick

Research Funding: AstraZeneca (Inst)

Appendix

The primary end point was time to distant recurrence (DR). DR was defined as metastatic disease, excluding contralateral disease, and locoregional and ipsilateral recurrences. The end point was censored at last follow-up visit or death before DR such that risk is a pure risk calculation ignoring deaths.

Cox proportional hazards models were used to create the model in ATAC (Arimidex Tamoxifen Alone or Combination), and the Clinical Treatment Score post-5 years (CTS5; ATAC) was tested in BIG (Breast International Group) 1-98. A shrinkage factor of 0.980 for the nonnodal part of the CTS5 (ATAC) score had been calculated during its derivation using a nested Cox model¹⁴ and applied to allow for the small amount of overfitting. We estimated the shrinkage factor with the following equation:

$\gamma = ([\text{model } \chi^2 - df]/\text{model } \chi^2)^{1/2}$ where model χ^2 is the likelihood ratio χ^2 statistic for testing all predictors, and df is degree of freedom.

To define the relation between CTS5 and 5- to 10-year DR risk, the logarithm of the baseline cumulative hazard function was fitted. Baseline risk at 5 years was calculated using the `stcox/basesurv` command in STATA (College Station, TX) to implement the Breslow method. Five- to 10-year DR risk was then calculated for each participant by adjusting the baseline risk:

$$\text{risk}(5\text{-}10 \text{ years}) = 1 - ([\text{baseline risk}]^{\text{linear prediction CTS5}})$$

Proportional assumptions were verified using Schoenfeld residuals.

Likelihood ratio χ^2 statistics and Kaplan-Meier survival estimates with corresponding 95% CIs (calculated from the standard error of the cumulative hazards on the basis of a normal approximation) were used to determine the prognostic performance of CTS5 (ATAC) in BIG 1-98. The risk of DR of events for individual patients in BIG 1-98 was estimated using CTS5 or the published Clinical Treatment Score (CTS0) and the expected risk compared with the observed events in deciles of expected risk. The observed and expected numbers were compared by the χ^2 test. Overall agreement was assessed by calculating the correlation coefficient across the deciles. Concordance between expected and actual outcomes was also calculated by computing the Goran-Heller C-index.

The 5- to 10-year DR risk groups were determined in ATAC and defined as: low-risk group, < 5%; intermediate-risk group, 5%-10%; and high-risk group, > 10%. To compare the prognostic performance of CTS5 (ATAC) between ATAC and BIG 1-98 trials, CTS5 (ATAC) was normalized to have unit variance, and the hazard ratios and associated 95% CIs were estimated from Cox models. All statistical analyses were two sided, and $P < .05$ was regarded as statistically significant. We also compared the newly developed CTS5 (ATAC) with CTS0, which was developed for estimating prognosis from the time of disease presentation⁶ to determine whether an improved prognostication for late DR had been achieved. All analyses were performed with STATA software (version 13.1).

The final model was fitted on the combined ATAC and BIG 1-98 data sets to give an overall calibration of CTS5. Therefore, new coefficients were fitted in the combined data set but using the same variables as in the training or validation cohort (ie, five nodal groups, continuous age, continuous size, and three grade groups).

Table A1. Comparison of Prognostic Performance of CTS0⁶ and CTS5 (ATAC) According to Trial

Score	ATAC (n = 4,735)		BIG 1-98 (n = 6,711)	
	HR* (95% CI)	LR- χ^2 †	HR* (95% CI)	LR- χ^2 ‡
CTS0 ⁶	2.04 (1.88 to 2.21)	285.0	1.84 (1.70 to 1.98)	214.9
CTS5 (ATAC)	2.47 (2.24 to 2.73)	308.6	2.07 (1.88 to 2.28)	212.1
No chemotherapy§	2.50 (2.22 to 2.81)	215.6	2.20 (1.96 to 2.47)	168.7
Chemotherapy	2.39 (1.94 to 2.95)	73.2	1.76 (1.46 to 2.13)	34.7

Abbreviations: ATAC, Arimidex, Tamoxifen, Alone or Combination; BIG, Breast International Group; CTS0, published Clinical Treatment Score; CTS5, Clinical Treatment Score post-5 years; HR, hazard ratio, LR, likelihood ratio.

*HR for a change in one standard deviation.

†9 df for CTS0; 5 df for CTS5 (ATAC).

‡1 df .

§n = 3,812 for ATAC; n = 5,084 for BIG 1-98.

||n = 923 for ATAC; n = 1,627 for BIG 1-98.

Risk Score for Late Recurrence of ER-Positive Breast Cancer

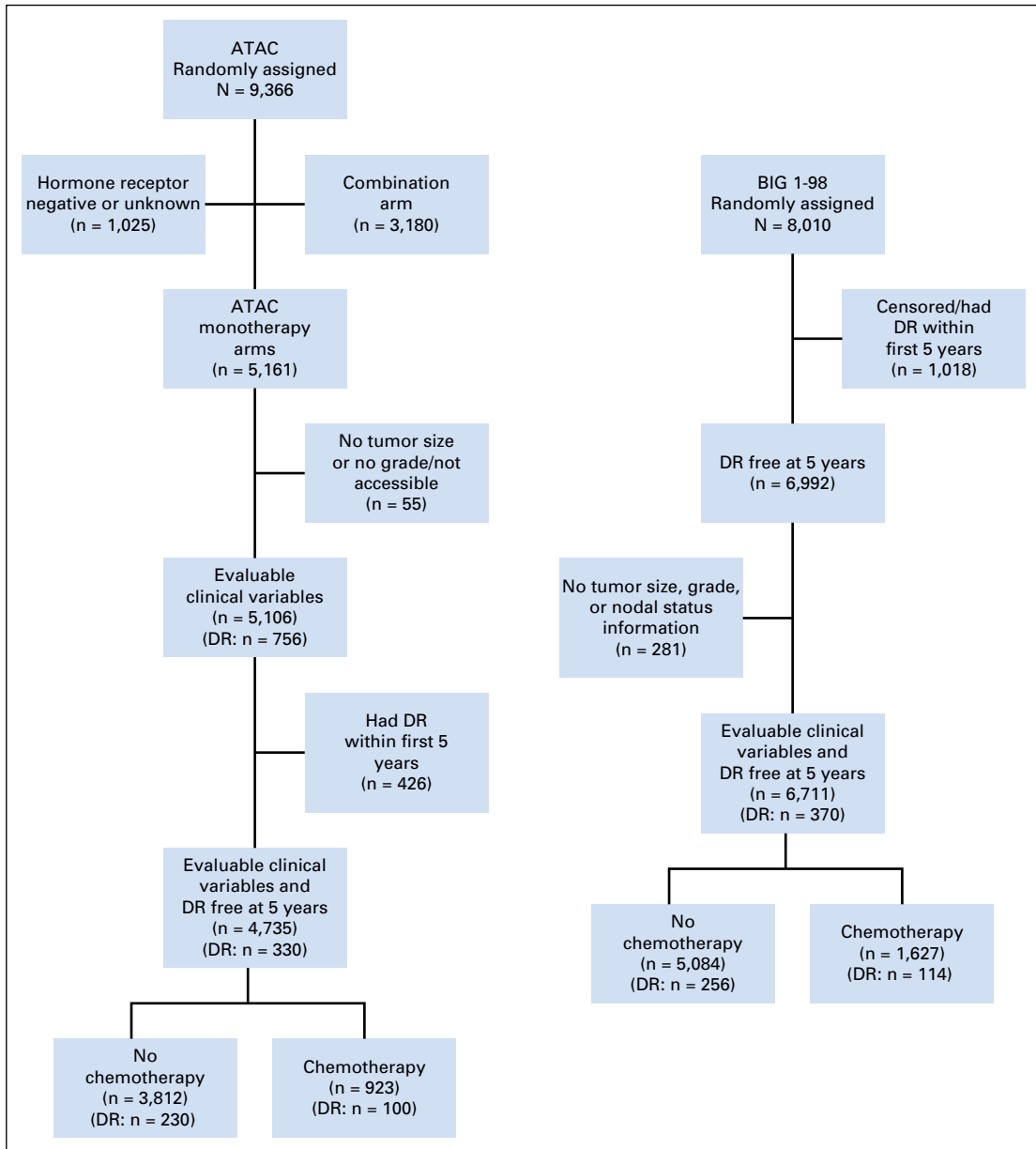


Fig A1. CONSORT diagram according to trial. ATAC, Arimidex, Tamoxifen, Alone or Combination; BIG, Breast International Group; DR, distant recurrence.

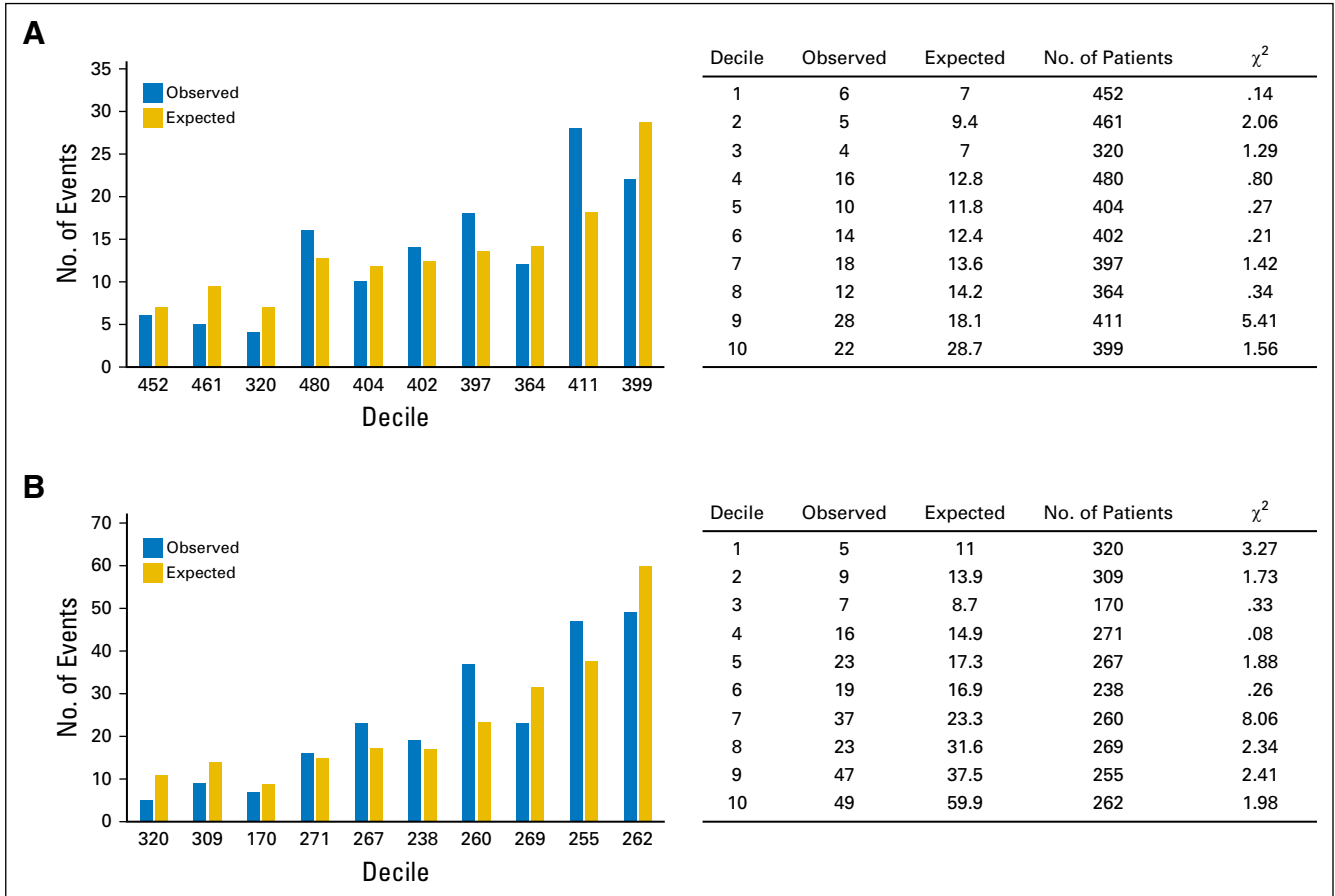


Fig A2. Observed versus expected number of events and χ^2 values in the BIG (Breast International Group) 1-98 trial according to deciles of published Clinical Treatment Scores (CTS0) for (A) node-negative and (B) node-positive patients. $p < 0.05$ when $\chi^2 > 3.84$.