

Stochastic game dynamics under demographic fluctuations

Weini Huang^a, Christoph Hauert^b, and Arne Traulsen^{a,1}

^aDepartment of Evolutionary Theory, Max Planck Institute for Evolutionary Biology, 24306 Plön, Germany; and ^bDepartment of Mathematics, The University of British Columbia, Vancouver, BC, Canada V6T 1Z2

Edited by Martin A. Nowak, Harvard University, Cambridge, MA, and accepted by the Editorial Board June 11, 2015 (received for review September 29, 2014)

Frequency-dependent selection and demographic fluctuations play important roles in evolutionary and ecological processes. Under frequency-dependent selection, the average fitness of the population may increase or decrease based on interactions between individuals within the population. This should be reflected in fluctuations of the population size even in constant environments. Here, we propose a stochastic model that naturally combines these two evolutionary ingredients by assuming frequency-dependent competition between different types in an individual-based model. In contrast to previous game theoretic models, the carrying capacity of the population, and thus the population size, is determined by pairwise competition of individuals mediated by evolutionary games and demographic stochasticity. In the limit of infinite population size, the averaged stochastic dynamics is captured by deterministic competitive Lotka–Volterra equations. In small populations, demographic stochasticity may instead lead to the extinction of the entire population. Because the population size is driven by fitness in evolutionary games, a population of cooperators is less prone to go extinct than a population of defectors, whereas in the usual systems of fixed size the population would thrive regardless of its average payoff.

evolutionary games | stochastic dynamics | changing population size

All natural populations are composed of a finite number of individuals. These individuals can reproduce, interact, die, or migrate, which leads to changes in the population size over time. In many theoretical models, it is convenient and possible to neglect the effect of demographic fluctuations by assuming infinite populations when population sizes are sufficiently large (1) or by assuming constant population size as in the Moran or Wright–Fisher process (2). However, such simplifications may be invalid when considering additional ecological processes including oscillations in population size of predator and prey systems (3–5), periodic fluctuations and outbreaks of infectious diseases in humans (6), or chaotic dynamics under multispecies interactions (7). The Lotka–Volterra equations provide a deterministic description of the abundances of species as continuous densities but they are not designed to include the impact of random drift. Theoretical models coupling changing population size and stochastic dynamics arising from individual based models have become more popular only recently (8–12).

The Lotka–Volterra equations naturally take frequency-dependent selection into consideration. Under frequency-dependent selection, the fitness of a given type (or species) depends on the composition of the entire population (or community) (13). Different kinds of frequency dependence can lead to different dynamical patterns. Most prominently, negative frequency-dependent selection can result in a stable coexistence of different types (14–18). One elegant way to describe such frequency dependence is through evolutionary game dynamics (13, 19). Evolutionary game theory has extensively developed the theory of stochastic dynamics in the past decade (2). However, most progress has been accomplished for constant, finite population sizes, which is mathematically convenient but does not always reflect biologically appropriate scenarios. Game theoretic models that take changing population sizes into account mostly focus on deterministic dynamics (20)—similar to traditional

ecological models. Here we introduce a simple and elegant model of stochastic evolutionary game dynamics that explicitly allows for changing population size through a natural interpretation of payoffs in terms of competition between individuals.

Traditional game theoretic models assume that individuals obtain payoffs from interactions with other members in the population, which are translated into fitness. Individuals with higher fitness are assumed to have more offspring and hence reproduction is frequency-dependent. Conversely, death rates are assumed to be constant or normalized so as to keep the population size constant. In contrast, here we focus on a microscopic description of the dynamics in terms of reaction kinetics equations. Assuming constant birth rates and frequency-dependent death rates allows one to interpret payoffs directly and naturally in terms of reaction rates, where selection acts on survival rather than reproduction. The present setup lends itself to a straightforward derivation of the deterministic dynamics in the limit of large population sizes in the form of competitive Lotka–Volterra equations but equally allows one to model the stochastic dynamics in finite populations of variable sizes, which may even lead to the extinction of the population.

Model and Results

Stochastic Dynamics. Most models for stochastic evolutionary game dynamics consider a fixed population size, such that every birth is balanced by the death of another individual (2). Simply decoupling birth and death events in such models leads to random fluctuations in the population size and thus eventually to stochastic extinction (21). Instead, here we propose a framework based on the microscopic processes of birth, death, and competition. For simplicity, we focus on two types of individuals, X and Y , but note that the generalization to arbitrary numbers is straightforward. Every individual reproduces

Significance

This contribution breaks with the tradition to restrict stochastic evolutionary game dynamics to populations of constant size and introduces a theoretical framework to investigate relevant and natural changes arising in populations that vary in size according to fitness—a feature common to many real biological systems. Explicitly including ecological variation can result in significant effects on the stochastic evolutionary trajectories while providing a transparent link to the established, deterministic Lotka–Volterra systems.

Author contributions: W.H., C.H., and A.T. designed research, performed research, and wrote the paper.

The authors declare no conflict of interest.

This article is a PNAS Direct Submission. M.A.N. is a guest editor invited by the Editorial Board.

Freely available online through the PNAS open access option.

¹To whom correspondence should be addressed. Email: traulsen@evolbio.mpg.de.

This article contains supporting information online at www.pnas.org/lookup/suppl/doi:10.1073/pnas.1418745112/-DCSupplemental.

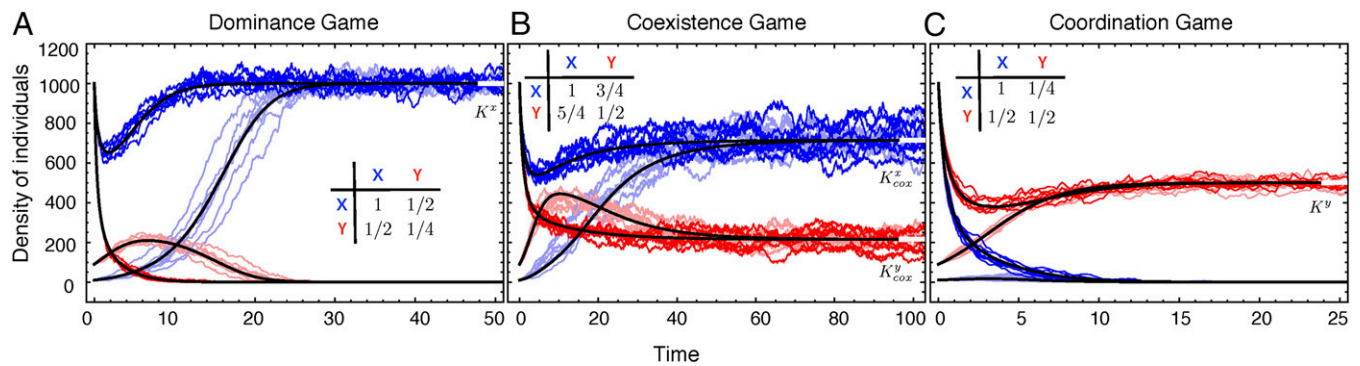


Fig. 1. The stochastic dynamics fluctuates around the deterministic predictions in large populations (black lines). Each panel refers to one of the three characteristic classes of interactions as determined by the ranking of payoffs. Evolutionary trajectories for X (blue) and Y (red) types are shown for initially small ($x_0 = 10$, $y_0 = 90$, pale colors) and large ($x_0 = 1,000$, $y_0 = 1,000$ saturated colors) populations. Regardless of the game both types tend to increase for low initial population sizes, whereas both types decrease in densities at large initial sizes. In all cases the deterministic predictions agrees well with the stochastic dynamics in that the stochastic trajectories fluctuate around the deterministic average [parameters $M = 2,000$, $\lambda_{x \rightarrow x} = \lambda_{y \rightarrow y} = 0.6$, and $\lambda_{x \rightarrow 0} = \lambda_{y \rightarrow 0} = 0.1$, which translates into $K^x = 1,000$ and $K^y = 250$ (A) and $K^y = 500$ (B and C)].

heterogeneous populations, where the total equilibrium density is K_{cox} and the densities of type X and type Y individuals at this equilibrium are K_{cox}^x and K_{cox}^y , respectively.

If $r_x < 0$ or $r_y < 0$, the corresponding type will invariably decline and disappear. Including competition only speeds up their demise. For example, this applies to the predators in the famous, oscillating Lotka–Volterra predator–prey dynamics. Because negative interaction rates are not meaningful, at least three different types are required to observe oscillations in a competitive system (25, 33).

Equilibria of the Deterministic System. The deterministic mean-field dynamics of our model serves as a valuable reference for the underlying stochastic evolutionary process. Birth and death rates, Eqs. 1 and 2, may differ for different types, but for the sake of simplicity and to highlight effects arising from evolutionary games we discuss interactions of two types, X and Y , with $r_x = r_y = r$. The evolutionary fate of each type depends on a combination of the strength of intratype competition (a and d) and intertype competition (b and c). In general, we can classify three different scenarios based on the payoff matrix. First, for $a > c$ and $b > d$, type X individuals invariably achieve higher payoffs (i.e., longer life expectancy) than Y types and hence type X dominates type Y . Similarly, type Y dominates type X whenever $a < c$ and $b < d$ (Fig. 1A). The prisoner’s dilemma is the most prominent example of a dominance game (19). Second, for $a > c$ and $b < d$ both types are at a disadvantage compared with the other type when rare. This reflects coordination games such as the stag-hunt game (34). Third, for $a < c$ and $b > d$ both types have an advantage when rare but are at a disadvantage when abundant. Thus, an interior equilibrium exists where the two types coexist (Fig. 1B). The hawk–dove or snowdrift games are examples of such scenarios (35). Note that even though the classification of the dynamics for two types is based on their payoffs in the same way as in the classical replicator dynamics (and the stability remains the same; see *SI Appendix, section 3*), the position of the rest points in our deterministic system are naturally different. For example, in the replicator dynamics a coexistence game as in Fig. 1B exhibits a stable rest point at $x^* = (d - b) / (a - b - c + d) = 1/2$. In contrast, according to Eq. 6, the frequency of X at equilibrium is $x^* = 10/13$. An intuitive reason for this increase in the relative abundance of X is that the total number of individuals at the mixed equilibrium is lower than the carrying capacity for a population of only X types.

Therefore, the only possible equilibria are either homogenous X or Y populations or a stable heterogeneous mixture of the two. According to Eq. 5 with $r_x = r_y = r$, the densities of individuals at the three

equilibria are $K^x = aMr$ and $K^y = dMr$ as well as $K_{\text{cox}} = K_{\text{cox}}^x + K_{\text{cox}}^y$ with $K_{\text{cox}}^x = [ac(b - d) / (bc - ad)]Mr$ and $K_{\text{cox}}^y = [bd(c - a) / (bc - ad)]Mr$, which can be rewritten as $K_{\text{cox}} = K^x + [(c - a)(b - a) / (bc - ad)]K^y$. Note that in the coexistence equilibrium the density of individuals of each type is always lower than its carrying capacity in isolation, that is, $K_{\text{cox}}^x < K^x$ and $K_{\text{cox}}^y < K^y$. However, the total number of individuals in mixed equilibria can either exceed or fall short of homogenous carrying capacities: If $b > a$, $K_{\text{cox}} > K^x$; if $b < a$, $K_{\text{cox}} < K^x$; if $c > d$, $K_{\text{cox}} > K^y$; and if $c < d$, $K_{\text{cox}} < K^y$. More specifically, in coexistence games $b > a$ and $c > d$ holds such that the total number of individuals is highest in the mixed equilibrium, $K_{\text{cox}} > K^x, K^y$. Conversely, the reverse ranking is impossible: It would require $b < a$ and $c < d$, but this refers to coordination games where the mixed state is unstable and the population approaches either one of the homogenous configurations. Of course, in the corresponding stochastic realizations the population size at equilibrium is not fixed and instead fluctuates around the carrying capacity (Fig. 1). For identical birth and death rates, the evolutionary game controls the relative growth or decline of the two types through competition, but regardless of the game the numbers of both types can increase or decrease if the current state of the population is far from equilibrium. All possible rankings of equilibrium densities are summarized in *SI Appendix, Table 1*.

Stochastic Simulations. In contrast to the deterministic equilibrium predictions, the only evolutionary outcome in stochastic simulations is the eventual extinction of the entire population—all other states are transient. Fortunately, the expected times to extinction rapidly grow with the density of individuals in equilibrium, controlled by M (Fig. 2). Hence, predictions based on deterministic dynamics, Eq. 5, keep providing valuable insights for the stochastic dynamics, Eqs. 1–3, especially for large population sizes. Substantial quantitative and even qualitative differences arise, as illustrated in Fig. 1 for three characteristic types of interactions. The stochastic dynamics is implemented through the Gillespie algorithm (36). For the relatively large carrying capacity $K^x = 1,000$ in Fig. 1, each realization of the stochastic dynamics fluctuates around the deterministic trajectory. Fluctuations represent an integral part of natural populations and hence stochastic evolutionary models provide a more natural way to study evolutionary trajectories, especially to capture the interplay between ecological and evolutionary processes (10, 11, 37, 38).

In small populations, competition for survival is weak and the dynamics is mainly determined by the intrinsic growth rate, r (i.e., individual birth and death events). Consequently, small r results in higher stochasticity but also tends to decrease the number of

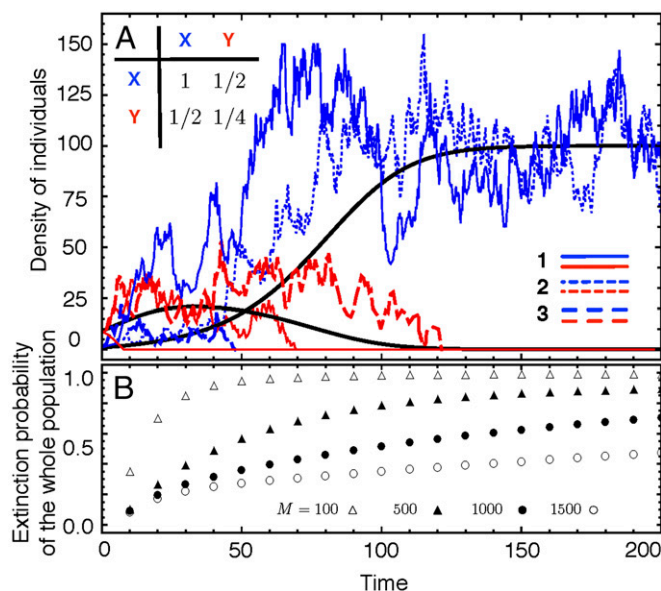


Fig. 2. Stochastic dynamics of a dominance game in small populations. (A) Three realizations of the stochastic dynamics in a small population with two types, X (blue) and Y (red) for $M=1,000$. Stochastic trajectories deviate significantly from the deterministic dynamics (solid black lines). For example, in the third realization both types go extinct, first the dominant type X followed by type Y a little later. (B) Cumulative probability for the extinction of the entire population over time, averaged over 10^5 realizations for different M (parameters $\lambda_{x-xx} = \lambda_{y-yy} = 0.6$, $\lambda_{x-0} = \lambda_{y-0} = 0.5$, $x_0 = 1$, and $y_0 = 9$; this yields $K^x = 100$ and $K^y = 25$ in the upper panel).

individuals at equilibria, which further amplifies the effect. As the population grows and approaches its carrying capacity, competition becomes increasingly important and competition rates (payoff matrix, Eq. 4) also control the size of fluctuations. Strong competition (small payoffs) reduces stochasticity but also tends to decrease the population size, which may offset the reduction in terms of fluctuations.

Furthermore, if the numbers of the two types in the stochastic process are far away from the deterministic equilibrium, even the averaged stochastic dynamics can be very different from deterministic predictions. For example, in the deterministic case a dominant mutant always succeeds in invading and eventually fixating in the population. In contrast, in the stochastic case a single mutant often fails to invade and fixate even if it is dominant. Note that fixation of a single mutant becomes even less likely in larger populations—despite the fact that fluctuations decrease and the deterministic dynamics is recovered in the limit of large populations.

Extinction. In ecological models the risk of extinction of a population owing to demographic stochasticity has recently received considerable attention (see, e.g., refs. 10, 37, and 38). Evolutionary game theory models demonstrated that stochastic fluctuations are important determinants for the fixation and extinction of individual traits even under constant population sizes (2) but remained unable to address the more dramatic possibility of the extinction of the entire population.

In a dominance game, the deterministic dynamics predicts that the dominant type invariably takes over the entire population and approaches its carrying capacity (Fig. 2A). However, in stochastic models the two types X and Y may go extinct sequentially owing to fluctuations. Especially when starting from small populations, the extinction probability is not negligible (Fig. 2B). Note that the (cumulative) extinction probability converges to 1 as time goes on regardless of the population size.

Only for larger populations extinction typically takes much longer and the extinction probability increases slowly with time. The smaller the population size—owing to small carrying capacities, fluctuations, or initial configurations—the higher the risk of extinction.

In Fig. 2A, the dominant X type has a higher carrying capacity than the Y type and, hence, provided that the X mutant successfully invades and fixates, the population ends up more persistent. In the third realization in Fig. 2A, the X type is lost first and the entire population vanishes soon after. An essential factor for the persistence of small populations are the birth and death rates, Eqs. 1 and 2, or, more specifically, their difference: For large intrinsic growth rates, small populations are more likely to escape extinction because the population can more readily recover and return to its carrying capacity.

In coexistence games, the two types X and Y typically coexist and their densities fluctuate around their respective (deterministic) densities of individuals in equilibrium, K_{cox}^x and K_{cox}^y (Fig. 1B). Whenever stochastic fluctuations drive one type to extinction, the carrying capacity of the remaining type changes to K^x or K^y , respectively. Thus, the density of individuals in the entire population changes and is driven by the interplay of demographic fluctuations arising from intrinsic growth rates and the strength of competition (Fig. 3).

In this case the extinction of the entire population is a two-step process: First one type goes extinct—typically the type with the lower density in equilibrium—and then the population fluctuates around the homogenous carrying capacity of the remaining type such that the extinction dynamics is now governed by the stochastic equivalent for the logistic growth of a single type, which is well understood (10, 24, 37).

Snowdrift Game. As a concrete example of a coexistence game, we consider the stochastic dynamics of the snowdrift game (35) [or, equivalently, the hawk–dove game (19)]. In the snowdrift game two individuals need to finish a task, which provides benefits β to both. The costs of the task, γ , are shared equally if both cooperate (i.e., participate in completing the task). If only one participates, the cooperator has to bear the entire costs but the defector still receives the benefits. Finally, if both defect and refuse to participate, the payoffs for both individuals are close to zero. Hence, the payoffs of cooperators, X, and defectors, Y, are $a = \beta - \gamma/2$, $b = \beta - \gamma$, $c = \beta$, and $d = \epsilon$, where $\beta - \gamma \gg \epsilon > 0$ and $\beta > \gamma > 0$. Note that in the limit $\epsilon \rightarrow 0$ the death rate of Y types due to competition diverges and they are no longer able to persist in isolation. To maximize its own gain, each player should do the opposite of what its opponent does. A population of cooperators fluctuates around $K^x = (\beta - \gamma/2)r_x M$. A defecting mutant has a selective advantage and hence is likely to successfully invade and the population typically starts fluctuating around a new equilibrium, where the total density of individuals is lower—from $b < a$ follows $K_{\text{cox}} < K^x$ (SI Appendix, Table 1). For sufficiently small ϵ , the conditions for the ranking $K^x > K_{\text{cox}}^x > K^y > K_{\text{cox}}^y$ are satisfied. Thus, even though defecting mutants are favored, their abundances in the coexistence equilibrium are even lower than when in isolation. Consequently, stochastic fluctuations are more likely to eliminate defectors and reestablish cooperation at the original carrying capacity, K^x . For example, for $M = 2,000$, $r_x = r_y = 0.5$, $\beta = 1.5$, $\gamma = 1$, and $\epsilon = 0.05$, the density of cooperators $K_{\text{cox}}^x \approx 964$ in the mixed equilibrium is much larger than that of defectors $K_{\text{cox}}^y \approx 18$ and hence the odds of persistence are clearly in favor of cooperators.

Discussion

Demographic fluctuations based on ecological interactions capture important aspects and represent crucial determinants of evolutionary trajectories, especially in smaller populations. Here, we introduce a simple stochastic framework built on the microscopic events of birth, death and competition. This framework admits a

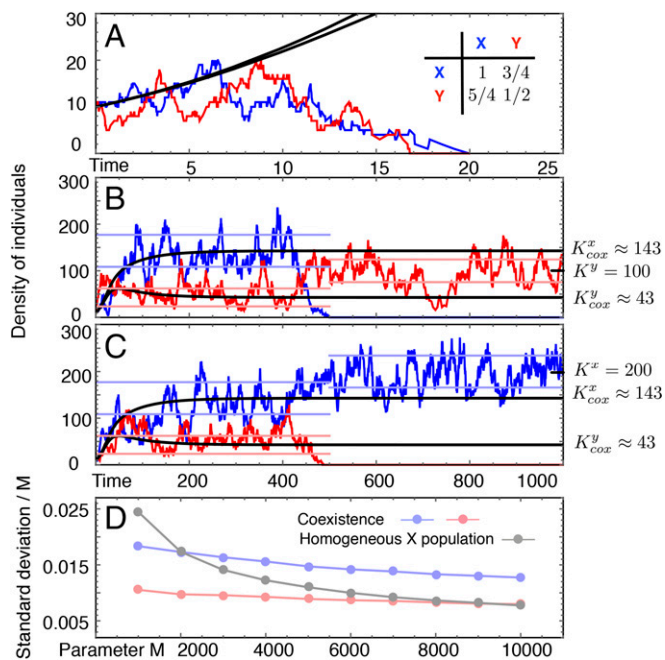


Fig. 3. Stochastic dynamics and large demographic fluctuations in a coexistence game. (A–C) ($M=2,000$): According to the deterministic dynamics (solid black lines) the two types X (blue) and Y (red) coexist at their respective equilibrium, K_{coex}^X and K_{coex}^Y . The three stochastic realizations, however, reveal a different picture: In the first case (A), both types go extinct early on. In the second case (B), type X goes extinct first, which benefits type Y and results in a higher carrying capacity than the density of type Y individuals in the coexistence equilibrium, $K^Y > K_{\text{coex}}^Y$. In the third case (C), type Y goes extinct first and the new carrying capacity K^X even exceeds the whole population size in the coexistence equilibrium, $K^X > K_{\text{coex}}^X$. Pale lines represent the simulated SD (averaged over 500 independent simulations with $\geq 10^6$ data points each). (D) The SD scaled by M in the coexistence equilibrium decreases with M , but differently for the two types (parameters $\lambda_{X \rightarrow XX} = \lambda_{Y \rightarrow YY} = 0.6$, $\lambda_{X \rightarrow 0} = \lambda_{Y \rightarrow 0} = 0.5$, $x_0 = 10$, and $y_0 = 10$, the same payoff matrix for all panels).

simple yet elegant way to implement evolutionary games through payoff based competition rates, which results in selection on survival instead of the more traditional fecundity based selection (30). This yields a stochastic model for evolutionary games in populations of changing and fluctuating finite size. In the limit of infinite population sizes, this framework recovers the deterministic dynamics of the competitive Lotka–Volterra equations and hence allows to pinpoint and emphasize differences that arise due to stochastic effects. The deterministic limit of the stochastic framework also highlights that, in contrast to the classical r - K -selection theory, the ecological carrying capacity of a population is an emergent quantity (27, 28), which depends on the population configuration and is determined by the underlying processes of birth, death, and

competition. In particular, mutations that alter the rates of any of these processes trigger a change in the (deterministic) carrying capacities of the mutant population, provided that it succeeds to take over, or of the mixed population in the case of coexistence. Our model implies that adaptation is not a simple process of accumulating beneficial mutations with higher carrying capacities in isolation, but instead an adaptive process that can favor invasion and fixation of mutations that are disadvantageous for the entire population including evolutionary suicide (39).

Dominant mutations are bound to take over with certainty under deterministic dynamics. However, in the stochastic scenario, the chances for a single beneficial mutant to successfully invade and take over remain small, even for a dominant strategy. At first it might be surprising that the chances of success decrease for increasing population sizes—despite the fact that the limit of large populations recovers the deterministic dynamics. However, of course, in this limit the mutant density converges to zero, which resolves the apparent contradiction. Similar results can be found in classical models of finite populations with constant fitness values (40). Here we investigated stochastic dynamics in well-mixed populations but a natural extension is to consider spatial dimensions, which may increase stochastic effects due to small local subpopulations (41–43).

Here, we have focused on the paradigmatic case of one population and two types, but it is straightforward to extend the framework to include multiple types. In a population with three types, oscillations can persist in the stochastic process, whereas the deterministic limit suggests cycles spiraling toward an internal equilibrium (44, 45) (SI Appendix, Fig. 1). Moreover, our framework extends to group interactions, such as public goods games, by allowing for competitive interactions that involve more than two individuals. However, in either case, the number of microscopic interactions tends to increase rapidly and hence hampers a more general yet compact and intuitive presentation.

The stochastic framework also emphasizes that in the long run populations invariably go extinct, which means that the deterministic equilibria merely indicate fleeting states—albeit the expected time to extinction can be exceedingly long, especially for larger populations. Therefore, it remains reasonable to consider the deterministic predictions as a baseline superimposed by fluctuations of stochastic realizations. At the same time it is crucial, especially in smaller populations, to consider the persistence of individual traits or the viability of the entire population. For example, in the snowdrift game an invasion attempt by defectors triggers ecological feedback, which alters the carrying capacities in favor of cooperators, such that stochastic fluctuations help to eliminate defectors and reestablish homogenous cooperation.

ACKNOWLEDGMENTS. This work was supported by the Natural Sciences and Engineering Research Council of Canada (C.H.) and Foundational Questions in Evolutionary Biology Fund Grant RFP-12-10 (to C.H.) and the Max Planck Society (W.H. and A.T.).

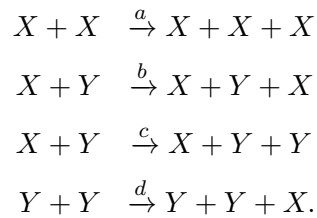
- Taylor PD, Jonker L (1978) Evolutionarily stable strategies and game dynamics. *Math Biosci* 40:145–156.
- Nowak MA, Sasaki A, Taylor C, Fudenberg D (2004) Emergence of cooperation and evolutionary stability in finite populations. *Nature* 428(6983):646–650.
- Cohen JE, Luczak T, Newman CM, Zhou ZM (1990) Stochastic structure and nonlinear dynamics of food webs: Qualitative stability in a Lotka–Volterra cascade model. *Proc Biol Sci* 240:607–627.
- Krebs CJ, et al. (1995) Impact of food and predation on the snowshoe hare cycle. *Science* 269(5227):1112–1115.
- Gilg O, Hanski I, Sittler B (2003) Cyclic dynamics in a simple vertebrate predator–prey community. *Science* 302(5646):866–868.
- Rohani P, Earn DJD, Grenfell BT (1999) Opposite patterns of synchrony in sympatric disease metapopulations. *Science* 286(5441):968–971.
- Benincà E, et al. (2008) Chaos in a long-term experiment with a plankton community. *Nature* 451(7180):822–825.
- Mao X, Sabanis S, Renshaw E (2003) Asymptotic behaviour of the stochastic Lotka–Volterra model. *J Math Anal Appl* 287:141–156.
- McKane AJ, Newman TJ (2004) Stochastic models in population biology and their deterministic analogs. *Phys Rev E Stat Nonlin Soft Matter Phys* 70(4 Pt 1):041902.
- Ovaskainen O, Meerson B (2010) Stochastic models of population extinction. *Trends Ecol Evol* 25(11):643–652.
- Black AJ, McKane AJ (2012) Stochastic formulation of ecological models and their applications. *Trends Ecol Evol* 27(6):337–345.
- Gokhale CS, Papkou A, Traulsen A, Schulenburg H (2013) Lotka–Volterra dynamics kills the Red Queen: Population size fluctuations and associated stochasticity dramatically change host–parasite coevolution. *BMC Evol Biol* 13:254.
- Nowak MA (2006) *Evolutionary Dynamics* (Harvard Univ Press, Cambridge, MA).
- Ayala FJ, Campbell CA (1974) Frequency-dependent selection. *Annu Rev Ecol Syst* 5:115–138.
- Gigord LDB, Macnair MR, Smithson A (2001) Negative frequency-dependent selection maintains a dramatic flower color polymorphism in the rewardless orchid *Dactylorhiza sambucina* (L.) Soo. *Proc Natl Acad Sci USA* 98(11):6253–6255.
- Nowak MA, Sigmund K (2004) Evolutionary dynamics of biological games. *Science* 303(5659):793–799.

Supporting Information for Stochastic game dynamics under demographic fluctuations

Weini Huang, Christoph Hauert, and Arne Traulsen

1 Relating payoffs to birth

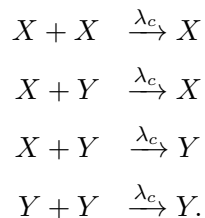
If payoffs affect birth instead of competition, the corresponding reactions can be written as



Using the same principle as in the main text, i.e. individuals with higher payoffs have advantages in pairwise interactions, the birth rates should be an increasing function of the payoff elements a, b, c , and d . The simplest choice is that birth rates equal payoffs. We assume constant intrinsic death rate λ_d for both types, which implies

$$X \xrightarrow{\lambda_d} 0 \quad \text{and} \quad Y \xrightarrow{\lambda_d} 0.$$

Following a logistic growth model, we assume neutral competition



Combining the ten reactions above, we obtain the deterministic rate equations

$$\begin{aligned}\dot{x} &= x(ax + by - \lambda_c(x + y) - \lambda_d), \\ \dot{y} &= y(cx + dy - \lambda_c(x + y) - \lambda_d),\end{aligned}\tag{1}$$

where x and y are the densities of individuals of type X and type Y . We denote the frequencies by $u = x/(x + y)$ and $v = y/(x + y)$. With Eqs. (1), we obtain the change of the frequency of type X as

$$\begin{aligned}\dot{u} &= \frac{\dot{x}y - \dot{y}x}{(x + y)^2} \\ &= \underbrace{(x + y)}_N u(1 - u) \underbrace{[(a - b - c + d)u + b - d]}_{\text{Replicator dynamics}}.\end{aligned}\tag{2}$$

The dynamics is equivalent to the replicator dynamics scaled by the total population size N . As N changes over time, this can be considered as a dynamical, non-linear rescaling of time without changing the trajectories or equilibria from the standard replicator dynamics [1].

If we now focus on a homogenous population with type X individuals only, i.e. $y = 0$, in Eqs. (1), we have

$$\dot{x} = x((a - \lambda_c)x - \lambda_d).\tag{3}$$

This equation has two equilibria, $x = 0$ and $x = \frac{\lambda_d}{a - \lambda_c}$. The first equilibrium $x = 0$, corresponding to extinction, is stable. The second equilibrium $x = \frac{\lambda_d}{a - \lambda_c}$ exists when $a > \lambda_c$. However it is always unstable as $\dot{x} > 0$ for $x > \frac{\lambda_d}{a - \lambda_c}$ and $\dot{x} < 0$ for $x < \frac{\lambda_d}{a - \lambda_c}$. In this alternative model where interactions affect birth, a homogenous population either goes extinct or explodes, depending on the initial population size. Although, the deterministic equations Eqs. (1) and (2) appear to be reasonable, their ecological meaning remains unclear [2].

2 Master equation and the diffusion approximation

The microscopic process is a two dimensional Markov process in continuous time which can be described by its master equation [3],

$$\begin{aligned}
 \frac{\partial P(x, y, t)}{\partial t} &= T_{x-1}^+ P(x-1, y, t) + T_{y-1}^+ P(x, y-1, t) \\
 &+ T_{x+1}^- P(x+1, y, t) + T_{y+1}^- P(x, y+1, t) \\
 &- (T_x^+ + T_y^+ + T_x^- + T_y^-) P(x, y, t),
 \end{aligned} \tag{4}$$

where $P(x, y, t)$ is the probability that there are x individuals of type X and y individuals of type Y at time t , and T is the transition rate of the population from one state to its neighbouring state. The subscript of T refers to the type whose density changes, and the superscript denotes whether its density increases by one or decreases by one. For example, T_x^+ is rate that the number of type X increases from x to $x+1$ and the number of type Y remains constant and T_y^+ is rate that the number of type Y increases from y to $y+1$ and the number of type X remains constant. The transition rates can be deduced from the reaction rates and the number of individuals of those types involved in the corresponding reactions,

$$\begin{aligned}
 T_x^+ &= \lambda_{x \rightarrow xx} x \\
 T_y^+ &= \lambda_{y \rightarrow yy} y \\
 T_x^- &= \lambda_{x \rightarrow 0} x + \frac{x^2}{aM} + \frac{xy}{bM} \\
 T_y^- &= \lambda_{y \rightarrow 0} y + \frac{y^2}{dM} + \frac{xy}{cM}.
 \end{aligned} \tag{5}$$

Here, M is a scaling term which determines the frequency of competition compared to intrinsic growth. As we have shown in the main text, it controls the size of the system. When M is larger, the density of individuals in the deterministic equilibria is larger.

To perform a diffusion approximation of the master equation, we scale the numbers x and y by M , $\tilde{x} = x/M$ and $\tilde{y} = y/M$. The new variables \tilde{x} and \tilde{y} are approximately continuous for

sufficiently large M . We also rescale time as $\tilde{t} = t/M$. This leads to

$$\begin{aligned}
\frac{\partial P(\tilde{x}, \tilde{y}, \tilde{t})}{\partial \tilde{t}} &= T_{\tilde{x}-\frac{1}{M}}^+ P(\tilde{x} - \frac{1}{M}, \tilde{y}, \tilde{t}) + T_{\tilde{y}-\frac{1}{M}}^+ P(\tilde{x}, \tilde{y} - \frac{1}{M}, \tilde{t}) \\
&+ T_{\tilde{x}+\frac{1}{M}}^- P(\tilde{x} + \frac{1}{M}, \tilde{y}, \tilde{t}) + T_{\tilde{y}+\frac{1}{M}}^- P(\tilde{x}, \tilde{y} + \frac{1}{M}, \tilde{t}) \\
&- (T_{\tilde{x}}^+ + T_{\tilde{y}}^+ + T_{\tilde{x}}^- + T_{\tilde{y}}^-) P(\tilde{x}, \tilde{y}, \tilde{t}),
\end{aligned} \tag{6}$$

Note when we rescale the time, we also need to rescale the transition rates accordingly. Thus in the same time unit, the transition rate from, for example, from state (x, y) to state $(x + 1, y)$, equals to the transition rate from the scaled state (\tilde{x}, \tilde{y}) and the scaled state $(\tilde{x} + \frac{1}{M}, \tilde{y})$. This leads to

$$\begin{aligned}
T_{\tilde{x}}^+ &= M\lambda_{x \rightarrow x+1} \tilde{x} \\
T_{\tilde{y}}^+ &= M(\lambda_{y \rightarrow y+1} \tilde{y}) \\
T_{\tilde{x}}^- &= M(\lambda_{x \rightarrow 0} \tilde{x} + \frac{\tilde{x}^2}{aM} + \frac{\tilde{x}\tilde{y}}{bM}) \\
T_{\tilde{y}}^- &= M(\lambda_{y \rightarrow 0} \tilde{y} + \frac{\tilde{y}^2}{dM} + \frac{\tilde{x}\tilde{y}}{cM}).
\end{aligned} \tag{7}$$

Now we expand the transition rates and probability densities in Eq. (6) in a Taylor series at \tilde{x} or \tilde{y} , and we obtain

$$\begin{aligned}
P(\tilde{x} \pm \frac{1}{M}, \tilde{y}, \tilde{t}) &\approx P(\tilde{x}, \tilde{y}, \tilde{t}) \pm \frac{\partial P(\tilde{x}, \tilde{y}, \tilde{t})}{\partial \tilde{x}} \frac{1}{M} + \frac{\partial^2 P(\tilde{x}, \tilde{y}, \tilde{t})}{\partial \tilde{x}^2} \frac{1}{2M^2}, \\
P(\tilde{x}, \tilde{y} \pm \frac{1}{M}, \tilde{t}) &\approx P(\tilde{x}, \tilde{y}, \tilde{t}) \pm \frac{\partial P(\tilde{x}, \tilde{y}, \tilde{t})}{\partial \tilde{y}} \frac{1}{M} + \frac{\partial^2 P(\tilde{x}, \tilde{y}, \tilde{t})}{\partial \tilde{y}^2} \frac{1}{2M^2}, \\
T_{\tilde{x}-\frac{1}{M}}^+ &\approx T_{\tilde{x}}^+ - \frac{\partial T_{\tilde{x}}^+}{\partial \tilde{x}} \frac{1}{M} + \frac{\partial^2 T_{\tilde{x}}^+}{\partial \tilde{x}^2} \frac{1}{2M^2}, \\
T_{\tilde{x}+\frac{1}{M}}^- &\approx T_{\tilde{x}}^- + \frac{\partial T_{\tilde{x}}^-}{\partial \tilde{x}} \frac{1}{M} + \frac{\partial^2 T_{\tilde{x}}^-}{\partial \tilde{x}^2} \frac{1}{2M^2}, \\
T_{\tilde{y}-\frac{1}{M}}^+ &\approx T_{\tilde{y}}^+ - \frac{\partial T_{\tilde{y}}^+}{\partial \tilde{y}} \frac{1}{M} + \frac{\partial^2 T_{\tilde{y}}^+}{\partial \tilde{y}^2} \frac{1}{2M^2}, \\
T_{\tilde{y}+\frac{1}{M}}^- &\approx T_{\tilde{y}}^- + \frac{\partial T_{\tilde{y}}^-}{\partial \tilde{y}} \frac{1}{M} + \frac{\partial^2 T_{\tilde{y}}^-}{\partial \tilde{y}^2} \frac{1}{2M^2}.
\end{aligned} \tag{8}$$

We denote $P = P(\tilde{x}, \tilde{y}, \tilde{t})$ and insert Eqs. (8) into Eq. (6), then we obtain

$$\begin{aligned}
\frac{\partial P}{\partial \tilde{t}} &\approx \left(T_{\tilde{x}}^+ - \frac{\partial T_{\tilde{x}}^+}{\partial \tilde{x}} \frac{1}{M} + \frac{\partial^2 T_{\tilde{x}}^+}{\partial \tilde{x}^2} \frac{1}{2M^2} \right) \left(P - \frac{\partial P}{\partial \tilde{x}} \frac{1}{M} + \frac{\partial^2 P}{\partial \tilde{x}^2} \frac{1}{2M^2} \right) \\
&+ \left(T_{\tilde{y}}^+ - \frac{\partial T_{\tilde{y}}^+}{\partial \tilde{y}} \frac{1}{M} + \frac{\partial^2 T_{\tilde{y}}^+}{\partial \tilde{y}^2} \frac{1}{2M^2} \right) \left(P - \frac{\partial P}{\partial \tilde{y}} \frac{1}{M} + \frac{\partial^2 P}{\partial \tilde{y}^2} \frac{1}{2M^2} \right) \\
&+ \left(T_{\tilde{x}}^- + \frac{\partial T_{\tilde{x}}^-}{\partial \tilde{x}} \frac{1}{M} + \frac{\partial^2 T_{\tilde{x}}^-}{\partial \tilde{x}^2} \frac{1}{2M^2} \right) \left(P + \frac{\partial P}{\partial \tilde{x}} \frac{1}{M} + \frac{\partial^2 P}{\partial \tilde{x}^2} \frac{1}{2M^2} \right) \\
&+ \left(T_{\tilde{y}}^- + \frac{\partial T_{\tilde{y}}^-}{\partial \tilde{y}} \frac{1}{M} + \frac{\partial^2 T_{\tilde{y}}^-}{\partial \tilde{y}^2} \frac{1}{2M^2} \right) \left(P + \frac{\partial P}{\partial \tilde{y}} \frac{1}{M} + \frac{\partial^2 P}{\partial \tilde{y}^2} \frac{1}{2M^2} \right) \\
&- \left(T_{\tilde{x}}^+ + T_{\tilde{y}}^+ + T_{\tilde{x}}^- + T_{\tilde{y}}^- \right) P. \tag{9}
\end{aligned}$$

If we consider only the terms of the first order M^{-1} and the second order M^{-2} in Eq. (9), we obtain the Fokker-Planck equation

$$\begin{aligned}
\frac{\partial P}{\partial \tilde{t}} = &- \frac{1}{M} \left(\frac{\partial}{\partial \tilde{x}} ((T_{\tilde{x}}^+ - T_{\tilde{x}}^-) P) + \frac{\partial}{\partial \tilde{y}} ((T_{\tilde{y}}^+ - T_{\tilde{y}}^-) P) \right) \\
&+ \frac{1}{2M^2} \left(\frac{\partial^2}{\partial \tilde{x}^2} ((T_{\tilde{x}}^+ + T_{\tilde{x}}^-) P) + \frac{\partial^2}{\partial \tilde{y}^2} ((T_{\tilde{y}}^+ + T_{\tilde{y}}^-) P) \right). \tag{10}
\end{aligned}$$

From Eqs. (7), we have $T_{\tilde{x}}^+ - T_{\tilde{x}}^- = M((\lambda_{x \rightarrow xx} - \lambda_{x \rightarrow 0})\tilde{x} - \frac{\tilde{x}^2}{aM} - \frac{\tilde{x}\tilde{y}}{bM})$, $T_{\tilde{y}}^+ - T_{\tilde{y}}^- = M((\lambda_{y \rightarrow yy} - \lambda_{y \rightarrow 0})\tilde{y} - \frac{\tilde{y}^2}{dM} - \frac{\tilde{x}\tilde{y}}{cM})$, $T_{\tilde{x}}^+ + T_{\tilde{x}}^- = M((\lambda_{x \rightarrow xx} + \lambda_{x \rightarrow 0})\tilde{x} + \frac{\tilde{x}^2}{aM} + \frac{\tilde{x}\tilde{y}}{bM})$, and $T_{\tilde{y}}^+ + T_{\tilde{y}}^- = M((\lambda_{y \rightarrow yy} + \lambda_{y \rightarrow 0})\tilde{y} + \frac{\tilde{y}^2}{dM} + \frac{\tilde{x}\tilde{y}}{cM})$. Putting these into Eq. (10), we can rewrite the Fokker-Planck equation as

$$\begin{aligned}
\frac{\partial P(\tilde{x}, \tilde{y}, \tilde{t})}{\partial \tilde{t}} = &- \frac{\partial}{\partial \tilde{x}} \left((\lambda_{x \rightarrow xx} - \lambda_{x \rightarrow 0})\tilde{x} - \frac{\tilde{x}^2}{aM} - \frac{\tilde{x}\tilde{y}}{bM} \right) P(\tilde{x}, \tilde{y}, \tilde{t}) \\
&- \frac{\partial}{\partial \tilde{y}} \left((\lambda_{y \rightarrow yy} - \lambda_{y \rightarrow 0})\tilde{y} - \frac{\tilde{y}^2}{dM} - \frac{\tilde{x}\tilde{y}}{cM} \right) P(\tilde{x}, \tilde{y}, \tilde{t}) \\
&+ \frac{1}{2M} \frac{\partial^2}{\partial \tilde{x}^2} \left((\lambda_{x \rightarrow xx} + \lambda_{x \rightarrow 0})\tilde{x} + \frac{\tilde{x}^2}{aM} + \frac{\tilde{x}\tilde{y}}{bM} \right) P(\tilde{x}, \tilde{y}, \tilde{t}) \\
&+ \frac{1}{2M} \frac{\partial^2}{\partial \tilde{y}^2} \left((\lambda_{y \rightarrow yy} + \lambda_{y \rightarrow 0})\tilde{y} + \frac{\tilde{y}^2}{dM} + \frac{\tilde{x}\tilde{y}}{cM} \right) P(\tilde{x}, \tilde{y}, \tilde{t}). \tag{11}
\end{aligned}$$

The equivalent stochastic differential equations [4], which can often be handled in a numerically

more efficient way, are

$$\begin{aligned}\frac{\partial \tilde{x}}{\partial t} &= (\lambda_{x \rightarrow xx} - \lambda_{x \rightarrow 0})\tilde{x} - \frac{\tilde{x}^2}{aM} - \frac{\tilde{x}\tilde{y}}{bM} + \sqrt{\frac{\tilde{x}}{M} \left(\lambda_{x \rightarrow xx} + \lambda_{x \rightarrow 0} + \frac{\tilde{x}}{aM} + \frac{\tilde{y}}{bM} \right)} \xi, \\ \frac{\partial \tilde{y}}{\partial t} &= (\lambda_{y \rightarrow yy} - \lambda_{y \rightarrow 0})\tilde{y} - \frac{\tilde{y}^2}{dM} - \frac{\tilde{x}\tilde{y}}{cM} + \sqrt{\frac{\tilde{y}}{M} \left(\lambda_{y \rightarrow yy} + \lambda_{y \rightarrow 0} + \frac{\tilde{y}}{dM} + \frac{\tilde{x}}{cM} \right)} \xi,\end{aligned}\quad (12)$$

where ξ is Gaussian white noise with mean 0 and variance 1. Note that the noise term vanishes when the population is close to extinction, but increases approximately linearly in the population density.

3 The stability of the equilibria

The deterministic rate equations for two types are

$$\dot{x} = x \left(r - \frac{1}{a} \frac{x}{M} - \frac{1}{b} \frac{y}{M} \right) \quad (13a)$$

$$\dot{y} = y \left(r - \frac{1}{c} \frac{x}{M} - \frac{1}{d} \frac{y}{M} \right), \quad (13b)$$

where x and y denote the densities of individuals of type X and Y , and r refers to the same intrinsic growth rate for both types. For $\dot{x} = 0$ and $\dot{y} = 0$, we have four equilibria, $E_1 = (0, 0)$, $E_2 = (0, dMr)$, $E_3 = (aMr, 0)$, $E_4 = \left(\frac{ac(b-d)}{bc-ad} Mr, \frac{bd(c-a)}{bc-ad} Mr \right)$. In the following, we perform a linear stability analysis of the four equilibria. The Jacobian matrix at the equilibrium (x^*, y^*) is

$$J(x^*, y^*) = \begin{bmatrix} r - \frac{2x^*}{aM} - \frac{y^*}{bM} & -\frac{x^*}{bM} \\ -\frac{y^*}{cM} & r - \frac{x^*}{cM} - \frac{2y^*}{dM} \end{bmatrix}. \quad (14)$$

(i) For $E_1 = (0, 0)$, $J(0, 0) = \begin{bmatrix} r & 0 \\ 0 & r \end{bmatrix}$. Thus, for any $r > 0$, the two eigenvalues are positive and this equilibrium is unstable.

(ii) For $E_2 = (0, dMr)$, $J(0, dMr) = \begin{bmatrix} r - \frac{d}{b}r & 0 \\ -\frac{d}{c}r & -r \end{bmatrix}$ with eigenvalues $-r$ and $-(d-b)r/b$. If $d > b$, the equilibrium is stable. Otherwise, it is unstable.

(iii) For $E_3 = (aMr, 0)$, $J(aMr, 0) = \begin{bmatrix} -r & -\frac{a}{b}r \\ 0 & r - \frac{a}{c}r \end{bmatrix}$ with eigenvalues $-r$ and $-(a-c)r/c$. If

$a > c$, the equilibrium is stable. Otherwise, it is unstable.

(iv) For $E_4 = (\frac{ac(b-d)}{bc-ad}Mr, \frac{bd(c-a)}{bc-ad}Mr)$, the Jacobian matrix in this equilibrium is

$$\begin{aligned} J_{E_4} &= \begin{bmatrix} r - \frac{2(b-d)c}{bc-ad}r - \frac{d(c-a)}{bc-ad}r & -\frac{ac(b-d)}{b(bc-ad)}r \\ -\frac{bd(c-a)}{c(bc-ad)}r & r - \frac{a(b-d)}{bc-ad}r - \frac{2b(c-a)}{bc-ad}r \end{bmatrix} \\ &= r \begin{bmatrix} -\frac{c(b-d)}{bc-ad} & -\frac{ac(b-d)}{b(bc-ad)} \\ -\frac{bd(c-a)}{c(bc-ad)} & -\frac{b(c-a)}{bc-ad} \end{bmatrix}. \end{aligned} \quad (15)$$

Thus the eigenvalues λ can be obtained given

$$\left(\underbrace{-\frac{c(b-d)}{bc-ad}}_A - \lambda \right) \left(\underbrace{-\frac{b(c-a)}{bc-ad}}_B - \lambda \right) - \underbrace{\frac{ad(b-d)(c-a)}{(bc-ad)^2}}_C = 0. \quad (16)$$

We can write Eq.(16) as $\lambda^2 - (A+B)\lambda + AB - C = 0$, thus $\lambda = \frac{A+B}{2} \pm \sqrt{\frac{(A-B)^2}{4} + C}$.

This equilibrium exists only if the densities of both types are positive, i.e. $\frac{ac(b-d)}{bc-ad} > 0$ and $\frac{bd(c-a)}{bc-ad} > 0$. This yields two cases: $b > d$ & $c > a$ and $b < d$ & $c < a$, which both result in $C > 0$ and $A + B < 0$.

Thus, the first eigenvalue $\lambda_1 = \frac{A+B}{2} - \sqrt{\frac{(A-B)^2}{4} + C}$, is always negative. The second eigenvalue $\lambda_2 = \frac{A+B}{2} + \sqrt{\frac{(A-B)^2}{4} + C}$ is negative if $\frac{(A+B)^2}{4} > \frac{(A-B)^2}{4} + C$, which can be simplified to $AB - C > 0$. From Eq. (16), we have

$$\begin{aligned} AB - C &= \frac{c(b-d)}{bc-ad} \frac{b(c-a)}{bc-ad} - \frac{ad(b-d)(c-a)}{(bc-ad)^2} \\ &= \frac{(bc-ad)(b-d)(c-a)}{(bc-ad)^2} \\ &= \frac{(b-d)(c-a)}{bc-ad}. \end{aligned} \quad (17)$$

Thus, if $b > d$ & $c > a$, then $AB - C > 0$ and the equilibrium is stable; if $b < d$ & $c < a$, the equilibrium is unstable.

In general, although the equilibria in the deterministic limit are different from those in the replicator dynamics, their stability remains the same.

4 Ranking of equilibria in a coexistence game

In a coexistence game where $a < c$ and $b > d$, two types stably coexist with each other in the deterministic system. Here, we list all possible rankings of the carrying capacities in two homogenous populations and the equilibrium densities in a heterogeneous population, see Tab. 1. One particularly interesting ranking is $K^x > K^y > K_{\text{COX}}^y > K_{\text{COX}}^x$: a homogenous population of type X reaches higher densities than type Y but in the mixed equilibrium type X is maintained at lower densities than type Y . In stochastic processes this becomes particularly important because smaller carrying capacities result in a higher risk of extinction. For this particular ranking, a mutant Y has an increased chance to take over the entire population because in the mixed equilibrium X is outnumbered and hence is more likely to go extinct due to stochastic fluctuations. If this happens, the density of type Y individuals will increase until it reaches K^y . Over the course of this invasion, the total density of individuals changes from K^x to K_{COX} and ends at K^y .

In co-existence games where $b < a$ holds, the ranking is $K^y < K^x < K_{\text{COX}}$ and the total population size first increases and then decreases. In co-existence games where $b > a$ holds, the ranking is $K^y < K_{\text{COX}} < K^x$ and hence the total population size continuously declines to the carrying capacity of type Y in isolation. This implies that evolution is not a simple process of accumulating beneficial mutations, which have higher carrying capacities in isolation, but instead the adaptive process can favour invasion and fixation of mutations that are disadvantageous for the entire population [5]. Similar evolutionary patterns are apparent in the prisoner's dilemma.

Conditions	Ranking
$a > d$ and $ad(c - d) < bc(a - d)$	$K^x > K_{\text{COX}}^x > K^y > K_{\text{COX}}^y$
$a > d$ and $ad(c - d) > bc(a - d)$ and $b > c$ or $ad(c - b) < bc(a - d)$	$K^x > K^y > K_{\text{COX}}^x > K_{\text{COX}}^y$
$a > d$ and $ad(c - b) > bc(a - d)$	$K^x > K^y > K_{\text{COX}}^y > K_{\text{COX}}^x$
$a < d$ and $ad(b - a) < bc(d - a)$	$K^y > K_{\text{COX}}^y > K^x > K_{\text{COX}}^x$
$a < d$ and $ad(b - a) > bc(d - a)$ and $b < c$ or $ad(c - b) > bc(a - d)$	$K^y > K^x > K_{\text{COX}}^y > K_{\text{COX}}^x$
$a < d$ and $ad(c - b) < bc(a - d)$	$K^y > K^x > K_{\text{COX}}^x > K_{\text{COX}}^y$

Table 1: In a coexistence game ($a < c$ and $d < b$), different conditions on the payoffs lead to certain rankings between the carrying capacities at homogenous and heterogeneous equilibria. Here we list all possible rankings assuming identical intrinsic growth rates $r_x = r_y$.

5 Cyclic dynamics

In our stochastic model, cyclic oscillation can be observed in a population with three types. Here, we show an example where the cycles spiral into an internal equilibrium according to the deterministic equations, but periodic oscillations persist under the corresponding stochastic process, see Fig. 1.

According to the payoff matrix (see inset in Fig. 1) in the deterministic dynamics, X can invade a homogenous Y population, Y can invade a homogenous Z population, and Z can invade a homogenous X population. The three types cycle into an internal equilibrium (see Fig. 1). However, demographic stochasticity drives the population away from the deterministic equilibrium and thus maintain the fluctuations over time. Note for small M , the population size is so small that demographic stochasticity will quickly lead to the extinction of the whole population.

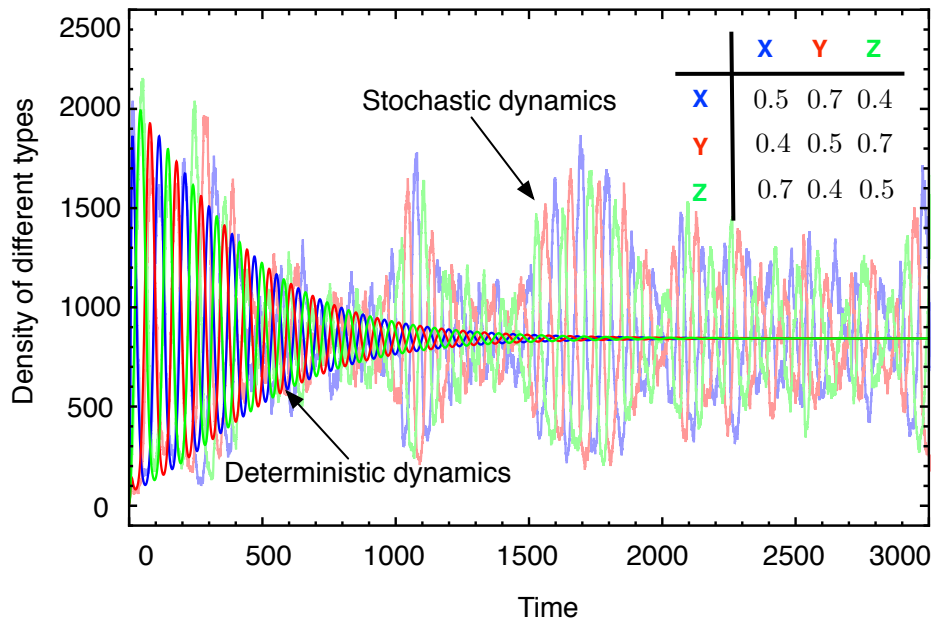


Figure 1: Cyclic dynamics of three types under competitive Lotka-Volterra dynamics. The interactions are given by the payoff matrix in the inset. Saturated lines represent the deterministic dynamics, pale lines show one stochastic realisation (parameters $\lambda_{x \rightarrow xx} = \lambda_{y \rightarrow yy} = \lambda_{z \rightarrow zz} = 0.6$, $\lambda_{x \rightarrow 0} = \lambda_{y \rightarrow 0} = \lambda_{z \rightarrow 0} = 0.1$, $M = 10000$, $x_0 = 90$, $y_0 = z_0 = 10$).

6 Fixed population size

Stochastic evolutionary dynamics under frequency dependent selection in populations of constant size, N , has recently attracted considerable interest, see e.g. [6, 7]. The most popular examples are based on birth-death models in discrete time. This results in a reduced set of microscopic interactions for two types, $X + Y \rightarrow X + X$, $X + Y \rightarrow Y + Y$. The deterministic rate equations are $\dot{x} = (\lambda_{xy \rightarrow xx} - \lambda_{xx \rightarrow xy}) x y$ and $\dot{y} = -\dot{x}$. In this case, x and y can be rescaled to indicate the frequencies due to constant population size. Constant reaction rates just lead to logistic growth of both types. Instead, to accommodate frequency dependent interactions, frequency dependent reaction rates are needed, e.g. $\lambda_{xy \rightarrow xx} = f_x/N$ and $\lambda_{xy \rightarrow yy} = f_y/N$, where f_x and f_y represent the frequency dependent fitness. This yields $\dot{x} = x(1-x)(f_x - f_y)$, which is just the replicator dynamics [8]. Alternatively, setting $\lambda_{xy \rightarrow xx} = f_x/(\bar{f}N)$ and $\lambda_{xy \rightarrow yy} = f_y/(\bar{f}N)$ where $\bar{f} = x f_x + y f_y$ denotes the average fitness of the population, leads to $\dot{x} = x(1-x)(f_x - f_y)/\bar{f}$ and recovers the adjusted replicator equation [9], which describes the deterministic limit of the frequency-dependent Moran process in discrete time [7]. Interpreting frequency dependent interactions under fixed population size based on individual reactions is somewhat problematic. First, it is unintuitive to define frequency dependent reaction rates on the microscopic level because each reaction should occur independently. Second, for an evolving population we expect changes in the population size resulting by the changes of population composition rather than merely due to stochastic effects, which questions the basic tenet of models with constant population size.

References

- [1] Nowak, MA (2006) *Evolutionary Dynamics* (Harvard University Press, Cambridge MA).
- [2] Mallet, J (2012) The struggle for existence: how the notion of carrying capacity, K , obscures the links between demography, Darwinian evolution, and speciation. *Evolutionary Ecology Research* 14:627–665.
- [3] van Kampen, NG (1997) *Stochastic Processes in Physics and Chemistry* (Elsevier, Amsterdam), 2 edition.
- [4] Gardiner, CW (2004) *Handbook of Stochastic Methods* (Springer, NY), third edition.

- [5] Huang, W, Haubold, B, Hauert, C, Traulsen, A (2012) Emergence of stable polymorphism driven by evolutionary games between mutants. *Nature Communications* 3:919.
- [6] Nowak, MA, Sasaki, A, Taylor, C, Fudenberg, D (2004) Emergence of cooperation and evolutionary stability in finite populations. *Nature* 428:646–650.
- [7] Traulsen, A, Claussen, JC, Hauert, C (2005) Coevolutionary dynamics: From finite to infinite populations. *Physical Review Letters* 95:238701.
- [8] Hofbauer, J, Sigmund, K (1998) *Evolutionary Games and Population Dynamics* (Cambridge University Press, Cambridge, UK).
- [9] Maynard Smith, J (1982) *Evolution and the Theory of Games* (Cambridge University Press, Cambridge).