

# BMJ Open Dietary intake and sources of sodium and potassium among Australian schoolchildren: results from the cross-sectional Salt and Other Nutrients in Children (SONIC) study

Carley A Grimes,<sup>1</sup> Lynn J Riddell,<sup>1</sup> Karen J Campbell,<sup>1</sup> Kelsey Beckford,<sup>1</sup> Janet R Baxter,<sup>1</sup> Feng J He,<sup>2</sup> Caryl A Nowson<sup>1</sup>

**To cite:** Grimes CA, Riddell LJ, Campbell KJ, *et al.* Dietary intake and sources of sodium and potassium among Australian schoolchildren: results from the cross-sectional Salt and Other Nutrients in Children (SONIC) study. *BMJ Open* 2017;7:e016639. doi:10.1136/bmjopen-2017-016639

► Prepublication history and additional material for this paper are available online. To view these files, please visit the journal online (<http://dx.doi.org/10.1136/bmjopen-2017-016639>).

Received 5 March 2017  
Accepted 21 July 2017



CrossMark

<sup>1</sup>Institute for Physical Activity and Nutrition, Deakin University, Geelong, Australia

<sup>2</sup>Wolfson Institute of Preventative Medicine, Barts and The London School of Medicine and Dentistry, Queen Mary University of London, London, UK

## Correspondence to

Dr Carley A Grimes;  
[carley.grimes@deakin.edu.au](mailto:carley.grimes@deakin.edu.au)

## ABSTRACT

**Objectives** To examine sodium and potassium urinary excretion by socioeconomic status (SES), discretionary salt use habits and dietary sources of sodium and potassium in a sample of Australian schoolchildren.

**Design** Cross-sectional study.

**Setting** Primary schools located in Victoria, Australia.

**Participants** 666 of 780 children aged 4–12 years who participated in the Salt and Other Nutrients in Children study returned a complete 24-hour urine collection.

**Primary and secondary outcome measures** 24-hour urine collection for the measurement of sodium and potassium excretion and 24-hour dietary recall for the assessment of food sources. Parent and child reported use of discretionary salt. SES defined by parental highest level of education.

**Results** Participants were 9.3 years (95% CI 9.0 to 9.6) of age and 55% were boys. Mean urinary sodium and potassium excretion was 103 (95% CI 99 to 108) mmol/day (salt equivalent 6.1 g/day) and 47 (95% CI 45 to 49) mmol/day, respectively. Mean molar Na:K ratio was 2.4 (95% CI 2.3 to 2.5). 72% of children exceeded the age-specific upper level for sodium intake. After adjustment for age, sex and day of urine collection, children from a low socioeconomic background excreted 10.0 (95% CI 17.8 to 2.1) mmol/day more sodium than those of high socioeconomic background ( $p=0.04$ ). The major sources of sodium were bread (14.8%), mixed cereal-based dishes (9.9%) and processed meat (8.5%). The major sources of potassium were dairy milk (11.5%), potatoes (7.1%) and fruit/vegetable juice (5.4%). Core foods provided 55.3% of dietary sodium and 75.5% of potassium while discretionary foods provided 44.7% and 24.5%, respectively.

**Conclusions** For most children, sodium intake exceeds dietary recommendations and there is some indication that children of lower socioeconomic background have the highest intakes. Children are consuming about two times more sodium than potassium. To improve sodium and potassium intakes in schoolchildren, product reformulation of lower salt core foods combined with strategies that seek to reduce the consumption of discretionary foods are required.

## Strengths and limitations of this study

- This is the largest Australian study to use urinary biomarkers to objectively measure sodium and potassium intakes among schoolchildren.
- For the first time, the contribution of sodium and potassium from core and discretionary foods among Australian schoolchildren is described, and this information can be used to inform public health policy.
- The convenience sample and low response rate limit the generalisability of findings to the wider paediatric Australian population.

## INTRODUCTION

In adults, a diet low in sodium and high in potassium can reduce blood pressure<sup>1,2</sup> and the risk of cardiovascular disease.<sup>3,4</sup> A similar relationship between sodium, potassium and blood pressure exists among children. Meta-analyses have shown that reductions in dietary sodium lead to modest reductions in childhood blood pressure,<sup>2,5</sup> and longitudinal studies have found that a higher intake of potassium during childhood was associated with lower systolic blood pressure in adolescence.<sup>6,7</sup> A lower ratio of sodium to potassium during childhood also appears to protect against rises in blood pressure.<sup>6–8</sup> Blood pressure tracks over the life course,<sup>9</sup> with raised levels in childhood increasing the risk of high blood pressure later in life<sup>10</sup> as well as contributing to early vascular damage.<sup>11,12</sup> As a means to maintain healthy blood pressure levels over the life course, there is strong support for initiatives that seek to reduce sodium intake among children.<sup>13</sup> Other concerns of excess dietary sodium during childhood include the development of taste preferences that favour salty foods.<sup>14</sup>

As part of the global targets for the prevention and control of non-communicable diseases,<sup>15</sup> Australia has committed to a 30% reduction in population salt intake. While there have been some efforts to reduce salt intake, to date there has been no nationally orchestrated salt reduction policy with the inclusion of robust monitoring measures.<sup>15</sup> Recently, work has progressed at the State level, with the 2015 launch of the 'State of Salt: The Case for Salt Reduction in Victoria'.<sup>15</sup> This initiative seeks to reduce salt intake among Victorian adults and children by supporting stronger action on salt by consumers, the food industry and government.<sup>16</sup> To monitor progress, it is important to assess salt intake in different population groups.

Twenty-four-hour urinary sodium excretion is considered the most accurate method to measure salt intake.<sup>17</sup> Few Australian studies have used this methodology.<sup>18 19</sup> National estimates for sodium and potassium are based on 24-hour dietary recall methods.<sup>20</sup> Globally, there has been an increase in the number of studies utilising 24-hour urinary sodium and potassium excretion for the assessment of salt and potassium intake in children.<sup>21–25</sup> In order to evaluate public health efforts that seek to reduce salt intake among Australian children, it is important that an accurate measure of total salt intake (ie, including both food and discretionary sources) is available. Importantly, this should be combined with information on food sources of sodium, including the contribution of sodium from core and discretionary foods. This information can help to inform and evaluate strategies that seek to improve dietary intakes. For example, in the case of lowering sodium intake, should efforts be focused on product reformulation of lower sodium foods or are strategies to reduce the consumption of discretionary foods required? The primary aim of this study was to determine sodium (ie, salt) intake using 24-hour urinary excretion in a sample of Victorian schoolchildren aged 4–12 years. As the ratio of sodium to potassium is related to health outcomes, we also determined potassium intake and the sodium to potassium ratio. Secondary aims included (1) examination of differences in electrolyte excretion and 'discretionary' salt use habits by demographic characteristics (age, sex, socioeconomic status), and (2) identification of the dietary sources of sodium and potassium, including the contribution from 'core' and 'discretionary' foods as defined by the Australian Dietary Guidelines.

## METHODS

Data were collected from June 2010 to May 2013 as part of the cross-sectional Salt and Other Nutrient Intakes in Children study. The study methodology<sup>26</sup> and preliminary findings<sup>18</sup> have been described. Ethics approval was obtained by the Deakin University Human Research Ethics Committee (project number EC62-2009) and the Victorian Department of Education and Early Childhood Development (2011\_001151). Of the 509 government and non-government schools invited to participate, 56 schools

(11%) agreed. Within participating schools, consent was obtained from 852 children (response rate=6%); 41 children withdrew from the study and children who did not agree to attend an off school campus data collection day (n=25) or who were aged >13 years (n=6) were excluded, leaving 780 participants.<sup>26</sup> Written parental/guardian consent and child assent were obtained for all participants.

## Measures

### Demographic characteristics and 'discretionary' salt use

The primary carer completed a questionnaire assessing child age, sex, parental level of education and 'discretionary' salt use. Discretionary salt use included salt added at the table or during cooking and was assessed via four questions.<sup>26</sup> Parents were asked the following: "Do you add salt during cooking?", "Do you place a salt shaker on your table at meal times?" and "Does your child add salt to their meal at the table or during sandwich preparation?". Children were asked "Do you add salt to your meal at the table?". For all questions, responses included 'yes, usually', 'yes, sometimes', 'no' or 'don't know'. Responses for 'don't know' have been excluded from analyses. The highest level of education obtained by the parent was used to define socioeconomic status (SES) of participants: (1) low SES includes those with some or no level of high school education, (2) mid SES includes those with a technical/trade certificate and (3) high SES includes those with a university/tertiary qualification. Information on parental educational attainment was collected retrospectively in n=254 children.<sup>26</sup> Within this group of 254 children, data could only be obtained in 160 (63%) children.

### Twenty-four-hour urine collection

Children could opt to commence the 24-hour urine collection on either a school day or non-school day (ie, weekends, public holidays and school holidays); detailed procedures are described elsewhere.<sup>26</sup> Urine samples were analysed at an accredited commercial pathology laboratory (Dorevitch Pathology, Melbourne, Australia). If the duration of the collection was not exactly 24 hours, but within 20–28 hours, urinary electrolytes, creatinine and total volume were standardised to a 24-hour period (ie, (24 hours/urine duration (hours)) $\times$ urinary measure). Urine samples were considered incomplete if collection time was <20 hours or >28 hours (n=5), total volume was <300 mL (n=37), the participant reported missing >1 collection (n=14) or urinary creatinine excretion was less than 0.1 mmol/kg body weight/day (n=69),<sup>26</sup> and one extreme outlier >8SD from the mean for sodium was excluded leaving a final sample of 666.

### Twenty-four-hour dietary recall

One face-to-face three-pass 24-hour dietary recall was completed in a subsample of children aged  $\geq 8$  years (n=498).<sup>26</sup> Implausible intakes of energy were assessed by comparing each participant's ratio of reported energy intake to estimated basal metabolic rate (EI:estBMR),



to the paediatric adjusted Goldberg cut-off value.<sup>27</sup> Age-specific and sex-specific Goldberg cut-off values were determined using child-specific light physical activity levels<sup>28</sup> and revised estimates<sup>29</sup> for the coefficient of variation (CV) in energy intake ( $CV_{wEI}$  23%), repeated BMR measurements ( $CV_{wB}$  8.5%) and variation in PAL ( $CV_{IP}$  15%). On this basis, participants ( $n=32$ , 5.8%) with an EI:estBMR ratio less than 0.87 for boys aged 8–12 years and 0.84 for girls aged 8–12 years were classified as a low energy reporter and excluded. Children with energy >4 SDs ( $n=3$ ) more than the mean (ie, >18867) were excluded, leaving a final sample of 517. Logistically, it was not possible to concurrently collect 24-hour dietary recalls alongside the 24-hour urine collection. Of the 517 children with valid 24-hour dietary recall data,  $n=464$  also had a complete 24-hour urine collection. Among these children, 90% ( $n=417$ ) completed the 24-hour dietary recall and 24-hour urine collection within a week of one another.

Reported food and beverage intake was converted into nutrient intakes using the Australian food composition database AUSNUT 2011–2013<sup>30</sup> and nutrient analysis program FoodWorks V.8 (Xyris). This is the most recent Australian food composition database that was made available via the FoodWorks analytical program in September 2015 and is an update from our previous report.<sup>31</sup> Intakes of energy (MJ/day), sodium (mg/day), sodium density (mg/MJ) and potassium (mg/day) are reported. The contribution of sodium and potassium from food groups was determined using the AUSNUT 2011–2013 Food Classification System, which groups individual food items into major, submajor and minor food groups. Individual foods consumed were coded as either a core or discretionary food, according to the Australian Guide to Healthy Eating classification system.<sup>32 33</sup> Core foods include those found within the five food groups, for example, (1) grain (cereal) foods; (2) vegetables and legumes/beans; (3) fruit; (4) milk, yoghurt, cheese and/or alternatives; and (5) lean meats and poultry, fish, eggs, tofu, nuts and seeds and legumes/beans, as well as water and polyunsaturated and monounsaturated spreads and oils.<sup>33</sup> Discretionary foods do not fall within the five food groups; many are high in kilojoules, saturated fat, added sugars, added salt or alcohol. These foods are not necessary for a healthy dietary pattern and should only be consumed in occasional small amounts.<sup>33</sup>

### Anthropometry

Height and weight were measured using standard protocols by trained researchers.<sup>26</sup>

Body mass index (BMI) values were converted to age-adjusted and sex-adjusted BMI z-scores using the 2000 US Centers for Disease Control and Prevention growth charts.<sup>34 35</sup> Participants were grouped into weight categories using the International Obesity Taskforce BMI reference cut-offs for children.<sup>36 37</sup>

### Statistical analysis

Descriptive statistics mean±SE and  $n$  (%) were used to describe continuous and categorical variables. The molecular weights of sodium (23 g/mol) and sodium chloride (58.5 g/mol) were used to convert millimoles of sodium to milligrams. The proportion of children with a sodium excretion exceeding the age-specific upper level (UL) for sodium intake (ie, 1000 mg/day for children aged 4–8 years and 2000 mg/day for children aged 9–12 years)<sup>38</sup> was calculated. Linear regression, with adjustment for school cluster, was used to compare differences in electrolyte excretion by sex, age group and SES. We present unadjusted models (model 1) as well as models adjusted for covariates, that is, model 2 adjusted for age, sex and day of urine collection (ie, school day or non-school day) and model 3 adjusted for model 2+BMI z-score. For the analysis related to socioeconomic background, SES group was entered as an indicator variable into the model with the low SES group acting as the reference group. Furthermore, as this model included multiple comparisons between SES subgroups, the Bonferroni correction for  $p$  values was also reported. Logistic regression, with adjustment for school cluster, was used to assess differences in ‘discretionary’ salt use habits by sociodemographic characteristics (eg, sex, age group and SES). The population proportion method was used to calculate the contribution of sodium and potassium from food groups, as well as ‘core’ and ‘discretionary’ foods.<sup>39</sup> Food groups that contributed to ≥1% of daily intakes are reported.

### RESULTS

Of the 666 children with complete urine collections, just over half were boys, the average age was  $9.3\pm 0.1$  years and about a third were of a high socioeconomic background (online supplementary table 1).

#### Twenty-four-hour urinary electrolyte excretion

Mean urinary sodium excretion was 103 mmol/day, equivalent to 6.1 g/day of salt (table 1). Sodium excretion was significantly greater among boys and among older children, aged 9–12 years (table 1). Seventy-eight percent and 67% of children aged 4–8 years and 9–13 years exceeded the age-specific UL for sodium intake. Sodium excretion was significantly greater on non-school days ( $110.4\pm 2.5$  mmol/day, salt equivalent  $6.5\pm 0.1$  g/day) compared with school days ( $95.7\pm 3.0$  mmol/day, salt  $5.6\pm 0.2$  g/day) ( $p<0.001$ ). Adjusted for age and sex, this difference remained whereby sodium excretion was  $16.4\pm 3.3$  (95% CI 9.8 to 23.1) mmol/day (1.0 g/day salt) greater on non-school days. With additional adjustment for BMI z-score, this difference remained whereby sodium excretion was  $17.3\pm 3.2$  (95% CI 10.8 to 23.8) mmol/day greater on non-school days. Further adjustment for SES among children with this data ( $n=570$ ) did not alter this association. Mean urinary potassium excretion was 47 mmol/day and, like sodium, potassium excretion was significantly greater among boys and older children



**Table 1** Twenty-four-hour urinary electrolyte excretion by age group and sex among participants aged 4–12 years\*

Urinary marker	4–12 years			4–8 years			9–12 years		
	All	Boys	Girls	All	Boys†	Girls	All	Boys†	Girls
No of participants	666	365	301	283	159	124	383	206	177
Sodium (mmol/day)	103±2	109±3‡	97±3	90±2§	94±2‡	85±3	113±3	120±4‡	105±3
Salt equivalent (g/day)	6.1±0.1	6.4±0.2‡	5.7±0.2	5.3±0.1§	5.5±0.1‡	5.0±0.2	6.6±0.2	7.0±0.2‡	6.1±0.2
Potassium (mmol/day)	47±1	49±1‡	44±1	41±1§	42±1‡	39±1	51±1	54±2‡	47±2
Na:K (molar ratio)	2.4±0.05	2.4±0.06	2.3±0.06	2.4±0.6	2.4±0.8	2.3±0.09	2.4±0.6	2.4±0.9	2.4±0.6
Creatinine (mmol/day)	5.6±0.1	5.8±0.2	5.3±0.2	4.3±0.1	4.5±0.1	4.1±0.1	6.5±0.1	6.8±0.2	6.1±0.2
Volume output (mL/day)	866±22	889±29	838±26	748±20	748±21	748±35	953±26	997±40	902±34

\*Linear regression with adjustment for school cluster was used to assess differences in the excretion of sodium, salt equivalent, potassium and Na:K molar ratio between subgroups.

†Additional adjustment for age, day of urine collection and BMI z-score did not alter results in any of the age or sex-subgroup analyses (data not shown). This was with the exception of urinary potassium excretion, which was no longer significantly higher in boys (fully adjusted model  $p=0.06$ ) within the age stratified sub-group analyses of 9–12 years.

‡ $<0.05$ , significant difference between boys and girls.

§ $<0.05$ , significant difference between age groups, that is, 4–8 years versus 9–12 years.

(table 1). The mean molar ratio of sodium to potassium was 2.4, and this did not differ by sex or age group (table 1). Potassium excretion was significantly greater on non-school days ( $49.0\pm 1.5$  mmol/day) compared with school days ( $43.9\pm 1.1$  mmol/day) ( $p=0.009$ ), and this difference remained in adjusted models (data not shown). The difference in molar ratio of Na:K across day types did not reach statistical significance,  $2.3\pm 0.1$  on school days versus  $2.5\pm 0.1$  on non-school days ( $p=0.09$ ), and this finding remained in adjusted models (data not shown).

#### Twenty-four-hour urinary electrolyte excretion by socioeconomic status

Urinary sodium excretion differed by socioeconomic background, low SES:  $110\pm 4$  mmol/day (salt  $6.4\pm 0.2$  g/day), mid SES:  $97\pm 4$  mmol/day (salt  $5.8\pm 0.2$  g/day) and high SES:  $99\pm 3$  mmol/day (salt  $5.8\pm 0.2$  g/day),  $p=0.04$ . Adjusted for age, sex and day of urine collection, those children from a low socioeconomic background excreted significantly more sodium than those of high socioeconomic background (10 mmol/day, salt 0.6 g/day) and those of mid socioeconomic background (12 mmol/day, salt 0.7 g/day) (table 2). This difference remained with further adjustment for cooking and table salt use (data not shown). However, the addition of BMI z-score into the model reduced the association and only a significant difference in sodium excretion between the mid and low SES group remained (table 2). There were no significant socioeconomic differences in potassium excretion or the molar ratio of Na:K (table 2).

#### Discretionary salt use

Two-thirds of parents reported adding salt during cooking either usually or sometimes (online supplementary figure 1). The child's self-reported use of table salt was greater (40% add usually or sometimes) than when the parent reported the behaviour as a proxy for the child (28% add

usually or sometimes). Just over a third (36%) of parents reported that they either usually or sometimes place a salt shaker on the table at meal times, and this behaviour was more common in parents with children aged 9–12 years (40.3% usually or sometimes) compared with those with children aged 4–8 years (29.9% usually or sometimes) (OR 1.58, 95% CI 1.13 to 2.20,  $p<0.001$ ). Similarly, parents of children aged 9–12 years were more likely to report that their child added salt at the table either usually or sometimes (32.3%) compared with parents of younger children (22.4%) (OR 1.7, 95% CI 1.29 to 2.25,  $p=0.001$ ). There was no association between sex of the child or socioeconomic background and any of the four 'discretionary' salt use behaviours (data not shown).

#### Food sources of sodium and potassium

Seventy-nine percent of 24-hour dietary recalls were completed on a school day. Among children aged 8–12 years with a valid 24-hour dietary recall ( $n=517$ ), average (SD) intake of energy, salt and potassium was 8384 (2456) kJ/day, 6.0 (2.7) g/day and 2501 (909) mg/day, respectively. In the subsample of children aged 8–12 years who had a valid 24-hour dietary recall and a complete 24-hour urine collection ( $n=464$ ), salt intake measured by 24-hour dietary recall was  $6.1\pm 0.1$  g/day versus  $6.4\pm 0.1$  g/day measured by 24-hour urinary excretion ( $p=0.07$ ). The type of day (school vs non-school) that salt intake was assessed on was an important factor with regards to observed differences in salt intake determined by each method. When the 24-hour dietary recall and 24-hour urine collection were completed on the same type of day, there was no difference in salt intake determined by each method (online supplementary table 2). Conversely, when the 24-hour dietary recall and 24-hour urine collection were completed on different day types, salt intake was consistently higher on non-school days.

**Table 2** Relationship between 24-hour urinary electrolyte excretion and socioeconomic status (SES) among participants aged 4–12 years (n=570)\*

Model	Sodium (mmol/day)			Potassium (mmol/day)			Na:K (molar ratio)		
	B (95% CI)	p Value	Adjusted p value†	B (95% CI)	p Value	Adjusted p value†	B (95% CI)	p Value	Adjusted p value†
<i>Model 1‡</i>									
Low SES (reference)									
Mid SES	-10.4 (-19.0 to 1.8)	0.019	0.056	0.7 (-3.4 to 4.9)	0.727	1.00	-0.3 (-0.5 to 0.4)	0.093	0.278
High SES	-10.7 (-20.3 to 1.1)	0.030	0.091	-1.3 (-5.1 to 2.6)	0.513	1.00	-0.2 (-0.4 to 0.1)	0.177	0.531
<i>Model 2§</i>									
Low SES (reference)									
Mid SES	-11.7 (-20.8 to 2.6)	0.013	0.040	0.3 (-3.7 to 4.2)	0.879	1.00	-0.3 (-0.6 to 0.0)	0.080	0.241
High SES	-10.0 (-17.8 to 2.1)	0.014	0.041	-0.5 (-3.7 to 2.7)	0.735	1.00	-1.9 (-0.4 to 0.0)	0.102	0.307
<i>Model 3¶</i>									
Low SES (reference)									
Mid SES	-11.9 (-21.0 to 2.7)	0.012	0.036	0.2 (-3.7 to 4.2)	0.908	1.00	-0.3 (-0.6 to 0.0)	0.080	0.241
High SES	-8.8 (-16.6 to 0.0)	0.028	0.084	-0.1 (-3.2 to 2.9)	0.942	1.00	-0.2 (-0.4 to 0.0)	0.109	0.326

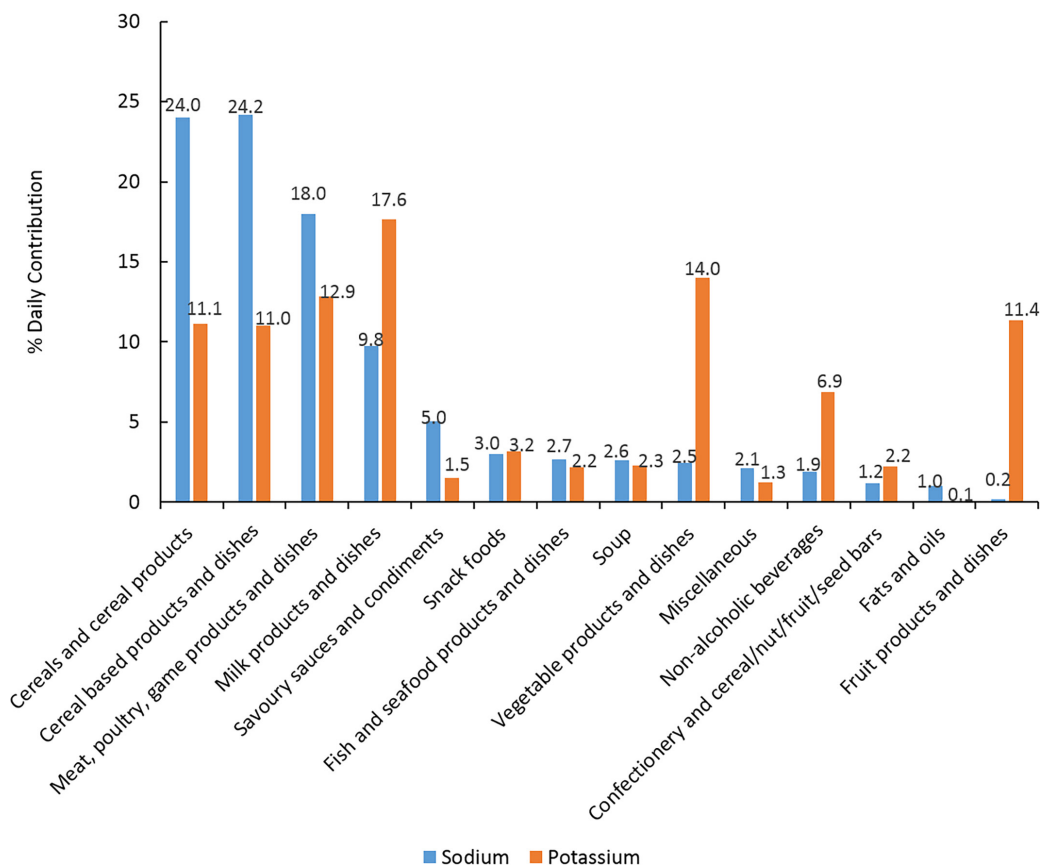
\*Multiple linear regression used to assess differences in urinary electrolyte excretion by SES, as defined by parental educational attainment. In all models, low SES is the reference category. B represents the beta-coefficient for the difference in urinary electrolyte excretion between the subgroup (ie, mid to low SES and high to low SES).

†p Value adjusted for multiple comparisons between subgroups using Bonferroni correction.

‡Model 1: unadjusted.

§Model 2: adjusted for age, sex and day of urine collection.

¶Model 3: adjusted for model 2+BMI z-score.



**Figure 1** Daily contribution (%) of sodium and potassium from major food groups among participants aged 8–12 years (n=517), which includes major food groups provided  $\geq 1\%$  of daily intake of sodium or potassium. Food groups ranked in order of greatest contributor to sodium intake.

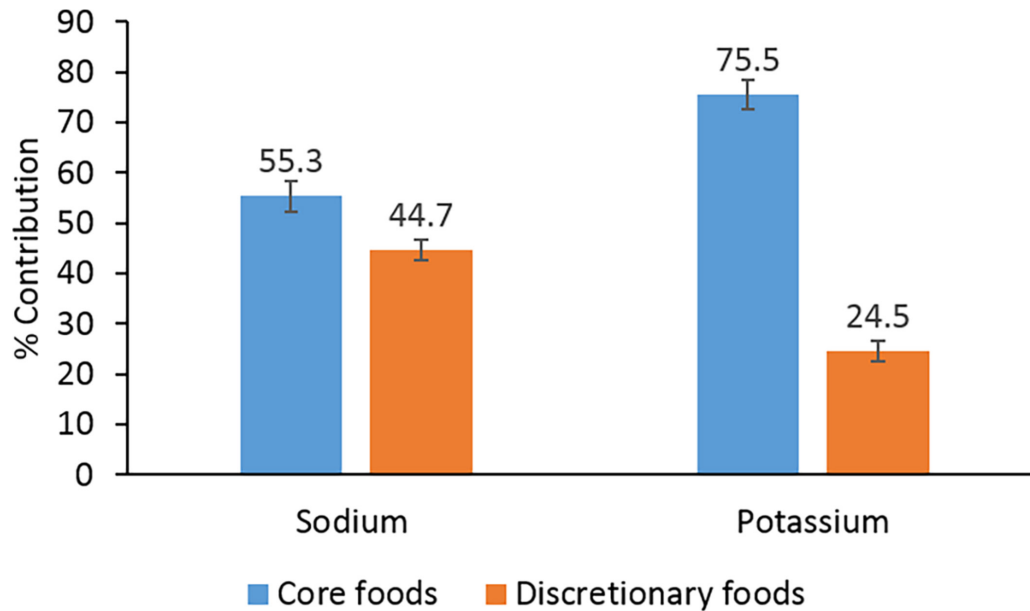
Figure 1 shows the contribution of sodium and potassium from major food groups. Almost half of all sodium consumed came from cereals and cereal-based products and dishes. Other important sources ( $>10\%$ ) of sodium included meat, poultry and game products and dishes (18.0%) and milk products and dishes (9.8%). The major contributor to potassium intakes were milk products and dishes (17.6%), other important sources included vegetable products and dishes (14.0%), meat, poultry and game products and dishes (12.9%), fruit products and dishes (11.4%), cereal and cereal products (11.1%) and cereal-based products and dishes (11.0%).

Online supplementary table 3 lists the contribution of submajor food groups to sodium and potassium intakes. The top five sources of sodium were bread, mixed cereal-based dishes, processed meat, cakes, muffins, scones, cake-type desserts and cheese. Collectively, these food groups accounted for 43% of all sodium consumed. The top five sources of potassium were dairy milk, potatoes, fruit and vegetable juices/drinks, mixed cereal-based dishes and bread. Collectively, these food groups accounted for a third of all potassium consumed. When foods were grouped as either ‘core’ or ‘discretionary’, 59.9% of energy was derived from core foods and 40.1% of energy was derived from discretionary foods. Just over half of all sodium came from ‘core’ foods, whereas three quarters of potassium came from core foods (figure 2).

Online supplementary table 4 provides information on the food sources at the minor food group level.

## DISCUSSION

Using an objective marker of salt intake, we found the average intake was 5.3g/day among children aged 4–8 years and 6.6g/day among children aged 9–12 years. This is 51% and 32% above the recommended UL for salt of 3.5g/day and 5.0g/day, respectively, for each age group.<sup>38</sup> These findings are similar to those reported in the 2011–2012 National Nutrition and Physical Activity (NNPAS), measured via 24-hour dietary recall, which was 5.2g/day and 6.3g/day among children aged 4–8 years and 9–13 years, respectively.<sup>20</sup> Compared with recent international studies that have used 24-hour urinary excretion methods, the salt intake of our group is similar to those reported in children from Germany (salt median/mean value range: 7–14 years: 5.3–6.9g/day),<sup>40</sup> lower than those reported in Italy (6–10 years: 5.3–7.3g/day),<sup>22</sup> Portugal (8–10 years: 6.1–7.5g/day)<sup>24</sup> and Spain (7–11 years: 7.8g/day)<sup>21</sup> and higher than those reported in the UK (4–10 years: 3.7–5.0g/day).<sup>25</sup> Lower intakes among British children, measured in 2008/2009–2011/2012<sup>25</sup> and 2007–2010,<sup>23</sup> are likely due to the comprehensive salt reduction initiatives, which have been under way in the UK since 2003.<sup>41</sup> The UK campaign targeted consumer



**Figure 2** Daily contribution (%) of sodium and potassium from ‘core’ and ‘discretionary’ foods among participants aged 8–12 years (n=517). Data are mean±SE.

awareness of salt and voluntary product reformulation to remove salt from processed foods<sup>41</sup> and resulted in 15% reduction in salt intake (1.4g/day, 24-hour excretion) in adults between 2003 and 2011.<sup>42</sup>

Studies in adults and children report higher salt estimates derived from 24-hour urinary excretion, compared with 24-hour dietary recall methods.<sup>40 43 44</sup> Reasons for differences are that dietary methods do not assess the use of table and cooking salt and there is the issue of under-reporting with dietary methods.<sup>32</sup> Although salt intake measured by 24-hour urinary excretion (6.3g/day) in the current study was higher than that measured by 24-hour dietary recall (6.1g/day), the difference did not reach statistical significance (p=0.07). There was no difference in salt intake assessed between each method when both methods assessed salt intake on the same type of day (ie, school vs non-school).

Although most salt (~75%) consumed comes from processed foods, it is still important to consider the use of discretion, which accounts for ~15% of daily intake.<sup>45 46</sup> Compared with national estimates,<sup>20</sup> the frequency of reported salt added at the table and during cooking was greater within our study sample. We found that 40% of children aged 4–12 years self-reported that they added salt at the table either ‘usually’ or ‘sometimes’. This compares to 10% and 24% of children aged 4–8 years and 9–13 years participating in the 2011–2012 NNPAS, who reported adding table salt either ‘very often’ or ‘occasionally’.<sup>20</sup> With respect to cooking salt, 60% of parents in our study reported that they added salt during cooking either ‘usually’ or ‘sometimes’. This compares to 40% and 47% of parents of children aged 4–8 years and 9–13 years, respectively, participating in the 2011–2012 NNPAS who reported adding cooking salt either ‘very often’ or ‘occasionally’.<sup>20</sup> The reasons for these

differences are not clear, but may be due to slight variation in wording of questions between studies, a national versus convenience sample and the potential to provide more socially desirable responses in the national survey that was completed face to face versus our questionnaire that was completed by the parent at home.

Salt intake, assessed by 24-hour urine, was 1.0g/day higher on non-school days compared with school days, and this is similar to our previous analysis of the national dietary survey, where salt intake was 0.5g/day higher on non-school days in children aged 6–12 years.<sup>47</sup> This likely reflects an overall poorer quality diet on weekends<sup>47 48</sup> characterised by greater consumption of ‘discretionary’ foods such as pizzas and burgers.<sup>47</sup>

In this study, we found some indication of socioeconomic disparities for salt intake but not for potassium intake or the molar ratio of Na:K. There was an overall trend for higher sodium intake from low to high SES groups, although the level of significance was attenuated after adjustment for BMI z-score and multiple comparisons. Previously within a national sample of children, we found that there was a 0.5g/day difference in salt intake from food sources between children of low and high socioeconomic background.<sup>49</sup> It appears that socioeconomic disparities in salt intake among children may be due to differences in food choices,<sup>49</sup> rather than ‘discretionary’ salt use.

With respect to 24-hour urinary potassium excretion, our findings of 41mmol/day and 51mmol/day in children aged 4–8 years and 9–12 years, respectively, are similar to previous reports in children from Italy,<sup>22</sup> Spain,<sup>21</sup> Portugal<sup>22</sup> and the UK.<sup>23</sup> A consistent finding across studies conducted in Western paediatric population groups is that children are consuming more sodium than potassium, leading to a high urinary Na:K molar



ratio.<sup>21 22 24</sup> The average Na:K molar ratio was 2.4 in this study, well above the WHO's recommended ratio of 1.<sup>50</sup> Similar to studies in adults,<sup>51</sup> we found 24-hour urinary potassium was 27% lower than that estimated from dietary recall as generally only 77% of dietary potassium is excreted in the urine.<sup>51</sup>

Our findings related to the food sources of sodium and potassium are consistent with those reported in the 2011–2012 NNPAS.<sup>20</sup> In this survey, 39% of energy was derived from discretionary foods (children aged 4–12 years),<sup>20</sup> which is comparable to our finding of 40% of energy and 45% of sodium coming from discretionary foods. Strategies that seek to reduce discretionary food consumption would also facilitate reductions in salt intake. Core foods, which in accordance with the Australian Guide to Healthy Eating should form the basis of a healthy diet due to their overall beneficial nutrient profile,<sup>33</sup> were found to provide a substantial amount of sodium (55%) to the diet. This finding indicates the need to reduce the amount of sodium added to 'core' foods, such as bread (14.8%) and cheese (4.8%), both of which were within the top five sources of sodium. The large variation in sodium content seen within these products<sup>52–54</sup> indicates the feasibility to reduce sodium. Setting sodium content targets for manufactured foods is a key element of salt reduction initiatives around the globe.<sup>55</sup> In 2009, the Australian Federal Government formed the Food and Health Dialogue, and during its 6-year working period, the group set voluntary sodium content targets for nine processed food categories.<sup>56</sup> The success of three of the first targets set was demonstrated by Trevena *et al* who reported a reduction in the sodium content of Australian bread (9%), breakfast cereals (25%) and processed meats (8%) between 2010 and 2013.<sup>57</sup> In 2015, the Food and Health Dialogue was replaced with the Healthy Food Partnership,<sup>56</sup> which provides an opportunity to continue reformulation efforts related to sodium.<sup>56</sup> In moving forward with salt reduction in Australia, lessons from the UK for successful salt reduction<sup>41</sup> should be noted with a focus on setting progressive sodium content targets for a wide range of food categories and transparent monitoring mechanisms.

The main strength of the present study was an objective measure of sodium and potassium intake in a relatively large sample of children. Limitations of the study include the convenience sample and low response rate, which, although comparable with other studies requiring 24-hour urine collections,<sup>58</sup> limit the generalisability of the findings to the wider population. Furthermore, it is possible that child participants were from families that were more health conscious than non-respondents. Despite efforts to reach all socioeconomic backgrounds via recruitment in both independent (ie, private) and government (ie, public) school sectors, close to two-thirds of children were from a high socioeconomic background. Compared with national estimates, our sample had fewer children who were overweight or obese; this may reflect different dietary patterns among our study participants

compared with the general population. Our questions related to discretionary salt use are not validated as none are available for use in children. The response scale options are limited in their subjectiveness; for example, interpretation of 'usually' or 'sometimes' may be interpreted differently between participants. Finally, as we were limited to one 24-hour urine collection, we did not adjust the distribution of salt intake for within-person variation, which tends to lead to an underestimation of the number of children exceeding the UL for salt intake.

In conclusion, Victorian schoolchildren are consuming too much sodium and not enough potassium, which has important implications for cardiovascular health. Furthermore, there is some evidence to indicate that sodium intake is higher among those children of lower socioeconomic background. To improve the sodium and potassium profile of schoolchildren, product reformulation of lower salt core foods along with strategies, for example, pricing, policy and consumer education, that seek to reduce the consumption of discretionary foods are required.

**Acknowledgements** We acknowledge the Victorian Department of Early Childhood and Development for their support in allowing the study to be conducted within the government school sector. We thank all schools and children who participated in the study.

**Contributors** The authors' responsibilities were as follows: CAG, LJR, KJC, FJH and CAN designed research; CAG performed statistical analysis and wrote the manuscript and is guarantor of the paper; JRB was involved in data collection and cleaning and edited and reviewed the manuscript; KB managed and entered dietary data and edited and reviewed the manuscript; LJR, KJC, FJH and CAN helped with data interpretation, revision of manuscript and provided significant consultation. All authors have read and approved the final manuscript.

**Funding** This work was supported by a Heart Foundation of Australia Grant-in-Aid (G10M5021) and a Helen MacPherson Smith Trust Fund Project Grant (6002). During this work, CAG was supported by a Heart Foundation Postgraduate Scholarship (PP08M4074) and a Heart Foundation of Australia Postdoctoral Fellowship (Award ID: 100155). During this work, JRB was supported by a National Heart Foundation of Australia Postgraduate Scholarship (Award ID: PP11M6172).

**Competing interests** All authors have completed the Unified Competing Interest form at [www.icmje.org/coi\\_disclosure.pdf](http://www.icmje.org/coi_disclosure.pdf) (available on request from the corresponding author) and declare: CAG received financial support in the form of a postgraduate scholarship and postdoctoral fellowship from the Heart Foundation, Australia, for the submitted work; JRB received financial support in the form of a postgraduate scholarship from the Heart Foundation, Australia. CAN has received research funds from Meat & Livestock Australia; National Health and Medical Research Council, Wicking Foundation, National Heart Foundation, Australia, Helen MacPherson Smith Trust and Red Cross Blood Bank. These payments are unrelated to the submitted work. LJR has received research funds from Meat & Livestock Australia. These payments are unrelated to the submitted work. CAG and CAN are members of World Action on Salt and Health (WASH) and Australian Division of World Action on Salt and Health (AWASH). FJH is a member of Consensus Action on Salt & Health (CASH) and WASH. CASH, WASH and AWASH are non-profit charitable organisations and no authors receive any financial support. KJC and KB had no support from any organisation for the submitted work and no other relationships or activities that could appear to have influenced the submitted work.

**Patient consent** Guardian consent obtained.

**Ethics approval** Deakin University Human Research Ethics Committee.

**Provenance and peer review** Not commissioned; externally peer reviewed.

**Data sharing statement** Data and materials are stored at the Institute for Physical Activity and Nutrition, Deakin University. The data will not be shared as this was not approved by the Deakin University Human Ethics Advisory Group or study participants.





**Open Access** This is an Open Access article distributed in accordance with the Creative Commons Attribution Non Commercial (CC BY-NC 4.0) license, which permits others to distribute, remix, adapt, build upon this work non-commercially, and license their derivative works on different terms, provided the original work is properly cited and the use is non-commercial. See: <http://creativecommons.org/licenses/by-nc/4.0/>

© Article author(s) (or their employer(s) unless otherwise stated in the text of the article) 2017. All rights reserved. No commercial use is permitted unless otherwise expressly granted.

## REFERENCES

- Aburto NJ, Hanson S, Gutierrez H, *et al*. Effect of increased potassium intake on cardiovascular risk factors and disease: systematic review and meta-analyses. *BMJ* 2013;346:f1378.
- Aburto NJ, Ziolkovska A, Hooper L, *et al*. Effect of lower sodium intake on health: systematic review and meta-analyses. *BMJ* 2013;346:f1326.
- Aaron KJ, Sanders PW. Role of dietary salt and potassium intake in cardiovascular health and disease: a review of the evidence. *Mayo Clin Proc* 2013;88:987–95.
- Strazzullo P, D'Elia L, Kandala NB, *et al*. Salt intake, stroke, and cardiovascular disease: meta-analysis of prospective studies. *BMJ* 2009;339:b4567.
- He FJ, MacGregor GA. Importance of salt in determining blood pressure in children: meta-analysis of controlled trials. *Hypertension* 2006;48:861–9.
- Buendia JR, Bradlee ML, Daniels SR, *et al*. Longitudinal effects of dietary sodium and potassium on blood pressure in adolescent girls. *JAMA Pediatr* 2015;169:560–8.
- Shi L, Krupp D, Remer T, Salt RT. Salt, fruit and vegetable consumption and blood pressure development: a longitudinal investigation in healthy children. *Br J Nutr* 2014;111:662–71.
- Geleijnse JM, Grobbee DE, Hofman A. Sodium and potassium intake and blood pressure change in childhood. *BMJ* 1990;300:899–902.
- Chen X, Wang Y. Tracking of blood pressure from childhood to adulthood: a systematic review and meta-regression analysis. *Circulation* 2008;117:3171–80.
- Tirosh A, Afek A, Rudich A, *et al*. Progression of normotensive adolescents to hypertensive adults: a study of 26,980 teenagers. *Hypertension* 2010;56:203–9.
- Lai CC, Sun D, Cen R, *et al*. Impact of long-term burden of excessive adiposity and elevated blood pressure from childhood on adulthood left ventricular remodeling patterns: the Bogalusa Heart Study. *J Am Coll Cardiol* 2014;64:1580–7.
- Li S, Chen W, Srinivasan SR, *et al*. Childhood blood pressure as a predictor of arterial stiffness in young adults: the Bogalusa Heart Study. *Hypertension* 2004;43:541–6.
- Appel LJ, Lichtenstein AH, Callahan EA, *et al*. Reducing sodium intake in children: a public health investment. *J Clin Hypertens* 2015;17:657–62.
- Stein LJ, Cowart BJ, Beauchamp GK. The development of salty taste acceptance is related to dietary experience in human infants: a prospective study. *Am J Clin Nutr* 2012;95:123–9.
- Webster J, Trieu K, Dunford E, *et al*. Salt reduction in Australia: from advocacy to action. *Cardiovasc Diagn Ther* 2015;5:207–18.
- Webster J, Bolam B. The state of salt: how state-based initiatives can drive national action on salt reduction in Australia. *Aust N Z J Public Health* 2016;40:203.
- World Health Organization. 2010. Strategies to monitor and evaluate population sodium consumption and sources of sodium in the diet. Report of a joint technical meeting convened by WHO and the Government of Canada. Canada: WHO.
- Grimes CA, Riddell LJ, Campbell KJ, *et al*. Dietary salt intake assessed by 24 h urinary sodium excretion in Australian schoolchildren aged 5–13 years. *Public Health Nutr* 2013;16:1789–95.
- Miles JM, Miles TS. Effect of processed foods on the salt intake of preschool children: a pilot study. *Med J Aust* 1982;2:23–5.
- Australian Bureau of Statistics. 4364.0.55.007—Australian Health Survey: Nutrition First Results—Foods and Nutrients, 2011–12. <http://www.abs.gov.au/AUSSTATS/abs@.nsf/DetailsPage/4364.0.55.0072011-12?OpenDocument> (accessed 12 Jun 2014).
- Aparicio A, Rodriguez-Rodriguez E, Cuadrado-Soto E, *et al*. Estimation of salt intake assessed by urinary excretion of sodium over 24 h in Spanish subjects aged 7–11 years. *Eur J Nutr* 2017;56:171–8.
- Campanozzi A, Avallone S, Barbato A, *et al*. High sodium and low potassium intake among Italian children: relationship with age, body mass and blood pressure. *PLoS One* 2015;10:e0121183.
- Marrero NM, He FJ, Whincup P, *et al*. Salt intake of children and adolescents in South London: consumption levels and dietary sources. *Hypertension* 2014;63:1026–32.
- Oliveira AC, Padrão P, Moreira A, *et al*. Potassium urinary excretion and dietary intake: a cross-sectional analysis in 8–10 year-old children. *BMC Pediatr* 2015;15:60.
- England PH, Diet N, Survey N. Results from Years 1–4 (combined) of the Rolling Programme (2008/2009–2011/12). London, UK: Public Health England, 2014.
- Grimes CA, Baxter JR, Campbell KJ, *et al*. Cross-sectional study of 24-hour urinary electrolyte excretion and associated health outcomes in a convenience sample of Australian primary schoolchildren: the Salt and Other Nutrients in Children (SONIC) Study Protocol. *JMIR Res Protoc* 2015;4:e7.
- Sichert-Hellert W, Kersting M, Schöch G. Underreporting of energy intake in 1 to 18 year old German children and adolescents. *Z Ernährungswiss* 1998;37:242–51.
- Torun B, Davies PS, Livingstone MB, *et al*. Energy requirements and dietary energy recommendations for children and adolescents 1 to 18 years old. *Eur J Clin Nutr* 1996;50:S37–80.
- Black AE. Critical evaluation of energy intake using the Goldberg cut-off for energy intake: basal metabolic rate. A practical guide to its calculation, use and limitations. *Int J Obes Relat Metab Disord* 2000;24:1119–30.
- Food Standards Australia and New Zealand. AUSNUT 2011–13 Food Nutrient Database 486 File. 2011–13 <http://www.foodstandards.gov.au/science/monitoringnutrients/ausnut/Pages/default.aspx> (accessed Jul 15 2016).
- Grimes CA, Riddell LJ, Campbell KJ, *et al*. 24-h urinary sodium excretion is associated with obesity in a cross-sectional sample of Australian schoolchildren. *Br J Nutr* 2016;115:1071–9.
- Australian Bureau of Statistics. 4363.0.55.001—Australian Health Survey: Users' Guide, 2011–13 Australian Health Survey—Discretionary Food List. <http://www.abs.gov.au/AUSSTATS/abs@.nsf/DetailsPage/4363.0.55.0012011-13?OpenDocument> (accessed Jul 15 2016).
- National Health and Medical Research Council. Australian Guide to Healthy Eating. <https://www.eatforhealth.gov.au/guidelines/australian-guide-healthy-eating> (accessed 15 Jul 2016).
- Flegal KM, Cole TJ. Construction of LMS parameters for the Centers for Disease Control and Prevention 2000 growth charts. *Natl Health Stat Report* 2013;63:1–3.
- Kuczmarski RJ, Ogden CL, Guo SS, *et al*. 2000 CDC Growth Charts for the United States: methods and development. *Vital Health Stat 11* 2002;2002:1–190.
- Cole TJ, Bellizzi MC, Flegal KM, *et al*. Establishing a standard definition for child overweight and obesity worldwide: international survey. *BMJ* 2000;320:1240–6.
- Cole TJ, Flegal KM, Nicholls D, *et al*. Body mass index cut offs to define thinness in children and adolescents: international survey. *BMJ* 2007;335:194–7.
- National Health and Medical Research Council. *Nutrient reference values for Australia and New Zealand*. Canberra: Australian Government. Department of Health and Ageing, 2006.
- Krebs-Smith SM, Kott PS, Guenther PM. Mean proportion and population proportion: two answers to the same question? *J Am Diet Assoc* 1989;89:667–72.
- Libuda L, Kersting M, Alexy U. Consumption of dietary salt measured by urinary sodium excretion and its association with body weight status in healthy children and adolescents. *Public Health Nutr* 2012;15:433–41.
- He FJ, Brinsden HC, MacGregor GA. Salt reduction in the United Kingdom: a successful experiment in public health. *J Hum Hypertens* 2014;28:345–52.
- He FJ, Pombo-Rodrigues S, Macgregor GA. Salt reduction in England from 2003 to 2011: its relationship to blood pressure, stroke and ischaemic heart disease mortality. *BMJ Open* 2014;4:e004549.
- Espeland MA, Kumanyika S, Wilson AC, *et al*. Statistical issues in analyzing 24-hour dietary recall and 24-hour urine collection data for sodium and potassium intakes. *Am J Epidemiol* 2001;153:996–1006.
- Loria CM, Obarzanek E, Ernst ND. Choose and prepare foods with less salt: dietary advice for all Americans. *J Nutr* 2001;131:536S–551S.
- James WP, Ralph A, Sanchez-Castillo CP. The dominance of salt in manufactured food in the sodium intake of affluent societies. *Lancet* 1987;1:426–9.
- Mattes RD, Donnelly D. Relative contributions of dietary sodium sources. *J Am Coll Nutr* 1991;10:383–93.



47. Grimes CA, Riddell LJ, Nowson CA. Nutrient and core and non-core food intake of Australian schoolchildren differs on school days compared to non-school days. *Appetite* 2014;83:104–11.
48. Rothausen BW, Matthiessen J, Hoppe C, *et al.* Differences in Danish children's diet quality on weekdays v. weekend days. *Public Health Nutr* 2012;15:1653–60.
49. Grimes CA, Campbell KJ, Riddell LJ, *et al.* Is socioeconomic status associated with dietary sodium intake in Australian children? A cross-sectional study. *BMJ Open* 2013;3:e002106.
50. World Health Organization. *Guideline: Sodium intake for adults and children*. Geneva: World Health Organization (WHO), 2012.
51. Tasevska N, Runswick SA, Bingham SA. Urinary potassium is as reliable as urinary nitrogen for use as a recovery biomarker in dietary studies of free living individuals. *J Nutr* 2006;136:1334–40.
52. Brinsden HC, He FJ, Jenner KH, *et al.* Surveys of the salt content in UK bread: progress made and further reductions possible. *BMJ Open* 2013;3:e002936.
53. Hashem KM, He FJ, Jenner KH, *et al.* Cross-sectional survey of salt content in cheese: a major contributor to salt intake in the UK. *BMJ Open* 2014;4:e005051.
54. Webster JL, Dunford EK, Neal BC. A systematic survey of the sodium contents of processed foods. *Am J Clin Nutr* 2010;91:413–20.
55. Trieu K, Neal B, Hawkes C, *et al.* Salt reduction initiatives around the world—a systematic review of progress towards the global target. *PLoS One* 2015;10:e0130247.
56. Jones A, Magnusson R, Swinburn B, *et al.* Designing a healthy food partnership: lessons from the Australian Food and Health Dialogue. *BMC Public Health* 2016;16:651.
57. Trevena H, Neal B, Dunford E, *et al.* An evaluation of the effects of the Australian Food and Health Dialogue targets on the sodium content of bread, breakfast cereals and processed meats. *Nutrients* 2014;6:3802–17.
58. Hawkes C, Webster J. National approaches to monitoring population salt intake: a trade-off between accuracy and practicality? *PLoS One* 2012;7:e46727.

**BMJ Open**

# Dietary intake and sources of sodium and potassium among Australian schoolchildren: results from the cross-sectional Salt and Other Nutrients in Children (SONIC) study

Carley A Grimes, Lynn J Riddell, Karen J Campbell, Kelsey Beckford, Janet R Baxter, Feng J He and Caryl A Nowson

*BMJ Open* 2017 7:

doi: [10.1136/bmjopen-2017-016639](https://doi.org/10.1136/bmjopen-2017-016639)

---

Updated information and services can be found at:  
<http://bmjopen.bmj.com/content/7/10/e016639>

---

*These include:*

## References

This article cites 50 articles, 13 of which you can access for free at:  
<http://bmjopen.bmj.com/content/7/10/e016639#BIBL>

## Open Access

This is an Open Access article distributed in accordance with the Creative Commons Attribution Non Commercial (CC BY-NC 4.0) license, which permits others to distribute, remix, adapt, build upon this work non-commercially, and license their derivative works on different terms, provided the original work is properly cited and the use is non-commercial. See: <http://creativecommons.org/licenses/by-nc/4.0/>

## Email alerting service

Receive free email alerts when new articles cite this article. Sign up in the box at the top right corner of the online article.

---

## Topic Collections

Articles on similar topics can be found in the following collections  
[Public health](#) (2306)

---

## Notes

---

To request permissions go to:  
<http://group.bmj.com/group/rights-licensing/permissions>

To order reprints go to:  
<http://journals.bmj.com/cgi/reprintform>

To subscribe to BMJ go to:  
<http://group.bmj.com/subscribe/>