

1 PROTOCOL AND QUALITY ASSURANCE FOR CAROTID IMAGING IN 100,000

2 PARTICIPANTS OF UK BIOBANK: DEVELOPMENT AND ASSESSMENT

3

4

5 Sean Coffey^{1,2}, Adam J Lewandowski¹, Sarah Hudson³, Steve Garratt³, Rudy Meijer⁴, Steven

6 Lynum⁵, Ram Bedi⁶, James Paterson⁷, Mohammad Yaqub⁸, J. Alison Noble⁸, Stefan

7 Neubauer¹, Steffen E Petersen⁹, Naomi Allen^{3,10}, Cathie Sudlow^{3,11}, Rory Collins^{3,10}, Paul M.

8 Matthews¹², Paul Leeson¹

9

10

11 Affiliations:

12 ¹ Division of Cardiovascular Medicine, Radcliffe Department of Medicine, University of
13 Oxford, Oxford, United Kingdom.

14 ² Department of Medicine, Dunedin School of Medicine, University of Otago, Dunedin, New
15 Zealand.

16 ³ UK Biobank, Cheadle, Stockport, United Kingdom.

17 ⁴ Julius Center for Health Sciences and Primary Care, University Medical Centre Utrecht,
18 The Netherlands.

19 ⁵ Panasonic Healthcare Corporation of North America, New Jersey USA

20 ⁶ Department of Bioengineering, University of Washington, Seattle WA USA

21 ⁷ Intelligent Ultrasound Ltd, Abingdon, United Kingdom.

22 ⁸ Institute of Biomedical Engineering, Department of Engineering Science, University of
23 Oxford, Oxford, United Kingdom.

1 ⁹ William Harvey Research Institute, NIHR Cardiovascular Biomedical Research Unit at
2 Barts, Queen Mary University of London, London, United Kingdom.

3 ¹⁰ Clinical Trial Service Unit & Epidemiological Studies Unit, Nuffield Department of
4 Population Health, University of Oxford, Oxford, United Kingdom.

5 ¹¹ Centre for Clinical Brain Sciences, University of Edinburgh, Edinburgh, United Kingdom.

6 ¹² Division of Brain Sciences, Imperial College, London, United Kingdom

7

8 **Funding**

9 UK Biobank has received funding from the UK Medical Research Council, Wellcome Trust,
10 Department of Health, British Heart Foundation, Diabetes UK, Northwest Regional
11 Development Agency, Scottish Government, and Welsh Assembly Government. SC was
12 supported by the UK Engineering and Physical Sciences Research Council (EPSRC) (Impact
13 acceleration award EP/K503769/1) and Heart Research Australia. The QA tool was
14 developed as part of the InnovateUK and EPSRC funded AQABUS project (EP/L505316/1).
15 RC is supported by a BHF personal Chair. PL is supported by the British Heart Foundation
16 FS/11/65/28865.

17

18 **Address for correspondence**

19 Professor Paul Leeson, Oxford Cardiovascular Clinical Research Facility, Division of
20 Cardiovascular Medicine, Radcliffe Department of Medicine, University of Oxford, John
21 Radcliffe Hospital, Oxford. OX39DU. e-mail: paul.leeson@cardiov.ox.ac.uk.
22 Tel:+44(0)1865572846, Fax:+44(0)1865572840

23

1 **Word count, including references: 3938**

2

1 **Abstract**

2

3 *Background* - Ultrasound imaging is able to quantify carotid arterial wall structure for
4 assessment of cerebral and cardiovascular disease risks. We describe a protocol and quality
5 assurance process to enable carotid imaging at large scale that has been developed for the UK
6 Biobank Imaging Enhancement Study of 100,000 individuals.

7 *Design* - An imaging protocol was developed to allow measurement of carotid intima-media
8 thickness (CIMT) from the far wall of both common carotid arteries. Six quality assurance
9 criteria were defined and a web-based interface (Intelligent Ultrasound) was developed to
10 facilitate rapid assessment of images against each criterion.

11 *Results and Conclusions* – Excellent inter- and intra-observer agreements were obtained for
12 image quality evaluations on a test dataset from 100 individuals. The image quality criteria
13 then were applied in the UK Biobank Imaging Enhancement Study. Data from 2560
14 participants was evaluated. Feedback of results to the imaging team led to improvement in
15 quality assurance (QA), with QA failures falling from 16.2% in the first two-month period
16 examined to 6.4% in the last. 80% had all CIMT images graded as of acceptable quality, with
17 at least one image acceptable for 98% of participants. CIMT measures showed expected
18 associations with increasing age and gender.

19 Carotid imaging can be performed consistently, with semi-automated quality assurance of all
20 scans, in a limited time frame within a large scale multimodality imaging assessment.

21 Routine feedback of quality control metrics to operators can improve the quality of the data
22 collection.

23 **Abstract word count:** 239

24 **Keywords:** Carotid, UK Biobank, Ultrasound, Carotid Intima Media Thickness, Carotid
25 IMT, Quality Assurance

1 INTRODUCTION

2 UK Biobank is a prospective study of 500,000 people aged between 40 and 69 years at
3 recruitment between 2006 and 2010.¹ An initial feasibility assessment (pilot phase) was
4 initiated in 2014, to evaluate the feasibility of conducting a multi-modal imaging study in
5 100,000 participants over 6 years, including MRI scans of the brain, heart and body, a dual-
6 energy X-ray absorptiometry (DEXA) scan and a carotid ultrasound.² The large scale and the
7 richness of the phenotyping in UK Biobank allows researchers to examine aspects of
8 cardiovascular epidemiology that previously would not have been possible.

9

10 Imaging of the carotid vessels can provide information on the thickness of the carotid vessels,
11 expressed as the carotid intima media thickness (CIMT), and the presence of carotid plaque.
12 Information concerning both has been associated with incident cardiovascular events.³⁻⁵ Use
13 of ultrasound to image the carotids has the advantage of being relatively low-cost, fast, free
14 of ionizing radiation, and requiring relatively little training to use,⁶ leading to its successful
15 use in a number of large population-based cohort studies.^{4,5,7,8} Good reproducibility is seen
16 even among relatively inexperienced operators under routine clinical conditions.⁶ However,
17 imaging on the scale of UK Biobank is unprecedented and requires adaptation of usual
18 approaches that allow both efficient data acquisition and exceptional attention to quality
19 assurance, to avoid bias and minimise measurement variation over time. Previous
20 publications have described the UK Biobank in general,¹ and the imaging substudies
21 involving cardiac MRI,^{2,9} liver MRI,¹⁰ and brain MRI.¹¹ In this article, we describe the
22 carotid ultrasound scanning protocol used within the UK Biobank Imaging Enhancement
23 study and the development of a quality assurance process. We also report an evaluation of
24 this process based on carotid ultrasound scans from the first 2,560 participants.

1

2 **METHODS**

3

4 ***Protocol Development***

5 A protocol was developed based on reported guidelines for carotid image acquisition^{12,13} that
6 took account of the practical aspects of space for equipment, time available and the limited
7 experience of the technicians. In addition, the requirement for potential future analysis of raw
8 ultrasound data was considered in acquisition of images. The protocol was devised to operate
9 alongside the other planned assessments for the Imaging Enhancement of UK Biobank
10 (cardiovascular, brain and abdominal magnetic resonance imaging, DEXA, as well as a
11 repeat of the study's baseline measures, which incorporate a comprehensive computer-based
12 questionnaire with interview, physical measures, and blood and urine sampling).

13

14 The flowchart for the protocol developed is shown in Figure 1. An abbreviated version of the
15 UK Biobank Standard Operating Protocol is available from
16 <http://biobank.ctsu.ox.ac.uk/crystal/refer.cgi?id=511>. In the pilot phase, imaging was
17 performed solely at the UK Biobank imaging facility at Cheadle, Stockport, UK. In brief, a
18 CardioHealth Station (Panasonic Healthcare Corporation of North America, Newark, NJ,
19 USA) was used, with a 9MHz linear array transducer. The carotid study was performed in a
20 darkened room and participants lay supine supported by a triangular pillow. Initially, a 2D
21 sweep of both carotids was performed along the short-axis (transverse plane) from low in the
22 neck up to the jaw, at least to the level of the carotid bifurcation, with the right carotid
23 scanned first. The conventionally configured CardioHealth Station user interface software
24 allows these sweeps to be performed but not stored. To meet the needs of the UK Biobank,
25 this interface was modified prior to commencement of the study to allow cine image loop

1 storage. The sweep was repeated in the long-axis (longitudinal plane) and stored. These
2 longitudinal images were also used to identify the bifurcation for measurement of CIMT.
3 This was performed at two angles for each carotid, giving a total of four CIMT
4 measurements, which when measured from the vertical axis were 150° and 120° on the right
5 carotid, and 210° and 240° on the left carotid. Automated position location identification
6 provided a real-time readout of the transducer angle to the technician. The CIMT was
7 measured at time of acquisition using the semi-automated CardioHealth Station hardware and
8 software, with ‘Auto ROI’ and ‘Auto Freeze’ enabled. The CHS software places a marker on
9 the screen to guide the user in alignment of the flow divider and a 10mm region-of-interest
10 box to facilitate CIMT measurement. The far-wall of the common carotid was then
11 automatically tracked by the region-of-interest box. When three consecutive cardiac cycles
12 met internal quality thresholds, the image auto-froze in end-diastole, giving the mean,
13 maximum and minimum of the CIMT tracking. Manual override of the automatically derived
14 CIMT boundaries was performed in cases where the detected boundaries did not align with
15 the underlying B-mode image, and manual override of the auto-freeze feature was performed
16 if auto-freeze was not invoked after prolonged period of scanning. The technician also had
17 the facility to adjust the image to ensure the CIMT measurement was not taken at sites of
18 focal plaque, defined based on the Mannheim Consensus as: “a focal structure that
19 encroaches into the arterial lumen of at least 0.5mm or 50% of the surrounding IMT value or
20 demonstrates a thickness >1.5mm as measured from the media-adventitia interface to the
21 intima-lumen interface”.¹²

22

23 ***Quality Assurance***

1 **Development of Quality Criteria** - To develop quality assurance (QA) processes for carotid
2 imaging, we reviewed available literature on protocols used in previous studies and also
3 criteria described for carotid image quality.^{5,12-15} No specific guidelines for quality assurance
4 for a study of this size (i.e. for 100,000 participants) were identified in literature review.
5 Thus, we defined six QA criteria based on how a technician is trained to handle the probe and
6 identify the region of interest when acquiring a carotid image, as described below:

- 7 1. **Horizontal.** The whole carotid (not just at the location of the box) lies approximately
8 horizontal on the image, with >75% of the long axis of the carotid < 15 degrees above
9 or below the horizontal.
- 10 2. **Oblique** (also referred to as **arterial misalignment**). The section obtained should be
11 along the long-axis of the carotid, with >80% of the visualised common carotid
12 showing parallel near and far carotid walls.
- 13 3. **Box location.** The distal edge of the box for automated CIMT measurement should be
14 positioned 1cm proximal to the flow divider of the carotid bulb, and there should be
15 no focal plaque within the box.
- 16 4. **White-black-white.** The CIMT should have distinct borders that define a clear
17 “white-black-white” pattern on the monitor.
- 18 5. **CIMT tracking.** The automated CIMT measurement was recorded at the correct time
19 in the cardiac cycle (end-diastole) and > 50% of the CIMT within the measurement
20 box has been tracked. All areas of CIMT tracked should accurately align with the B-
21 mode image.
- 22 6. **Angle.** The acquisition angle of the image should have been recorded within 30
23 degrees of the selected angle category (i.e., for images selected to represent 120
24 degrees, the acceptable range is 90-150 degrees).

1 Based on these six quality criteria, we developed a single Pass/Fail QA flag for images. For
2 an image to pass the overall QA, an image needed to pass *all* of the individual criteria of box
3 position and CIMT tracking, but could fail *one* of horizontal, oblique or white-black-white
4 criteria. For each participant, a carotid study consisted of four images showing the CIMT
5 measurement acquired at predefined angles of acquisition (i.e., right 150°, right 120°, left
6 210°, and left 240°). A separate QA flag was generated for each angle of acquisition.

7 ***Assessment of Quality Criteria*** - To evaluate our approach, we used a test dataset of 100
8 carotid studies to estimate both inter and intra-observer reproducibility of the quality criteria,
9 after which we evaluated the process as a whole in the Pilot Phase (2567 subjects, of whom
10 2560 had a QA assessment at each angle of acquisition). To ensure consistency in application
11 of these criteria, we developed a web-based interface to allow the rapid semi-automated
12 review of images. The images were loaded into a simple custom designed grading tool
13 (Intelligent Ultrasound Ltd, Abingdon, United Kingdom), and each image was assessed twice
14 (on separate occasions) by three clinicians experienced in grading carotid ultrasound images,
15 henceforth called graders. When assessing inter- and intra-observer reliability or agreement,
16 measures that adjust the raw percentage agreement by that expected due to chance are used,
17 such as Cohen's kappa. However, Cohen's kappa and its direct extensions tend to show
18 paradoxical behaviour at the extremes of prevalence (for example, as in our case, if a large
19 majority of images passed QA assessment), with very high agreement between observers
20 sometimes even leading to negative kappas.^{16,17} We therefore used Gwet's first order
21 agreement coefficient, referred to as the AC1 statistic, to assess reliability. This, like Cohen's
22 kappa, is 0 in cases of no agreement and 1 in cases of perfect agreement, but incorporates
23 observer uncertainty into the model and tends to be less affected by prevalence.^{17,18}

24 ***Application of Quality Assurance and Quality Audit in Pilot Phase*** - Participant age was
25 provided and analysed according to decade of birth, with age groups of ≤50, 51-60, 61-70,

1 and ≥ 71 years at the time of carotid ultrasound. Once the QA criteria were finalised, all
2 studies acquired were reviewed for quality assurance (QA) purposes by a trained UK
3 Biobank senior radiographer and information fed back to the sonographers on a weekly basis.
4 Images from each of the four acquired angles were graded as Pass/Fail, according to the
5 developed criteria and based on an overall assessment of each image. A random selection of
6 approximately 10% of these images, as well as any borderline images, were reviewed by
7 expert staff in the Oxford Cardiovascular Clinical Research Facility. Results from the
8 external review were fed back to the imaging centre on a monthly basis to complete the audit
9 cycle, with teleconferences as required to discuss any specific issues.

10 ***Statistical Analysis*** - At the end of the pilot phase, we used the available data on CIMT,
11 quality assurance and the age and sex of participants to investigate the overall validity of the
12 acquired carotid measurements. Specifically, we studied associations between CIMT and age
13 and sex, reasoning that measured CIMT should be higher in older age groups and in male
14 participants. We used multivariate linear regression, with predictor variables of age (as an
15 ordered categorical variable based on decade) and sex. We then assessed the impact of the
16 quality assurance process on carotid measures by studying how the model fit varied if images
17 that failed QA were excluded. We did this based on exclusion of all studies in which one
18 image failed QA. All statistical analyses were performed using R version 3.2.2.¹⁹

19

20

21 **RESULTS**

22 ***Assessment of Quality Criteria*** - 588 images from 100 participants acquired during the pilot
23 phase of the UK Biobank Imaging Enhancement were graded in the semi-automated tool
24 (Figure 2A) by three graders on two separate occasions. More than one image from each
25 angle of acquisition was eligible for assessment during this phase of the QA process. Overall,
26 there was a very good agreement between evaluations performed by different graders

1 (Supplementary Figure 1, Supplementary Table 1). All criteria showed excellent intra-
2 observer reliability (minimum Gwet AC1 88%), with good inter-observer reliability
3 (minimum Gwet AC1 78%). Examples of images passing and failing QA are shown in Figure
4 2B-G.

5 ***Application of Quality Assurance and Quality Audit*** - Images from the first 2567
6 participants after implementation of the QA protocol were evaluated. Pass/Fail QA flags for
7 all four angles of acquisition were available for 2560 participants, and, of these, 2519 (98%)
8 had at least one image passing QA. 523 (20%) studies had at least one image failing QA but
9 the proportion of images failing QA decreased over time, with an average across views of
10 16.2% failing QA in the first two month period compared to 6.4% failing in the last two
11 month period analysed (Supplementary Figure 2).

12 ***Evaluation of validity of carotid datasets***

13 Data for evaluation of associations were available for 2558 of the 2567 participants. Based on
14 the entire dataset, mean CIMT was higher in older, compared with younger, age groups and
15 was higher in men than in women (Table 1, Supplementary Figure 3). A linear regression
16 model (Table 2) showed a 61 μm (95% CI: 55-67 μm) increase in CIMT per decade, and a
17 48 μm (95% CI: 39-57 μm) increase in male compared to female participants compared to the
18 average CIMT of 553 μm (95% confidence interval (95% CI): 542-564 μm) in 45-50 year old
19 females in the model (adjusted R^2 0.191, $p < 2 \times 10^{-16}$). Studies with one image that failed QA
20 tended to have on average a 46 μm greater CIMT (Supplementary Figure 3) and a linear
21 regression model with a QA flag (indicating any image failing QA) had slightly higher
22 adjusted R^2 than the model without the QA flag (Table 2). However, the confidence interval
23 for reference CIMT in younger females, as well as those of older age and male sex, was very

1 similar under both models, suggesting that the impact of including ‘failed’ images on the
2 overall assessment is small.

3

4 **DISCUSSION**

5 We describe a protocol for carotid image acquisition and semi-automated measurement of
6 carotid IMT within a limited timeframe for application within a large cohort study.

7 Furthermore, we describe development of quality assurance criteria to allow evaluation of
8 quality of images and audit control. Application of these procedures reduced the number of
9 quality fails within scans and helped to ensure that 98% of participants had at least one CIMT
10 measure. Analysis of the dataset confirms that the CIMT measures within the UK Biobank
11 Imaging Enhancement pilot phase associate with age and sex in the expected way, implying
12 face validity of the measures.

13

14 A key feature of the UK Biobank imaging protocol is that it needs to be performed within a
15 limited time frame in participants who also undergo abdominal, cardiac and brain magnetic
16 resonance imaging, dual energy X-ray absorptiometry (DEXA), blood sampling and an
17 extensive questionnaire. During the study visit, only 10 minutes is available for carotid
18 imaging, including time for patient registration. In addition to this time constraint, we expect
19 that data acquisition will be performed by multiple technicians at three separate imaging
20 assessment centres over the course of the Imaging Enhancement Study (which will take 6-7
21 years). Our protocol was therefore developed to achieve a relatively detailed image
22 acquisition in a highly reproducible manner. A recent meta-analysis highlights the variability
23 in CIMT measurements across studies.²⁰ The use of semi-automated measurement techniques
24 is recommended in international consensus statements to reduce inter-observer variability,^{12,13}
25 and we therefore chose an ultrasound system that implements these. In addition, the

1 CardioHealth Station system we used has been shown to have excellent reproducibility even
2 in less-experienced users.^{6,21,22}

3

4 A potential limitation of the protocol at this time is the lack of quantification of the plaque
5 that may be present in the images. Focal plaque has been shown to provide additional
6 discrimination above that provided by CIMT measurement alone.^{23,24} However, the additional
7 discrimination is modest (area under the receiver operating curve 0.64 for plaque vs 0.61 for
8 CIMT as a predictor of myocardial infarction over an average of eight years in a large meta-
9 analysis).²⁴ As the assessment of plaque is much more subjective, it is both operator
10 dependent and time consuming. Therefore it was not considered practical to provide
11 evaluation of plaque at the time of image acquisition. However, the image acquisition
12 protocol provides both a short axis 2D sweep along the length of the carotid as well as
13 longitudinal views to above the bifurcation. Retrospective evaluation of stored image datasets
14 will therefore be possible to assess plaque characteristics and other novel carotid parameters
15 – these images will be available to external researchers. In addition, these stored raw image
16 datasets have the potential to be used for future novel metric evaluations including, for
17 example, assessment of geometric variation or measurements of intima media thickness in
18 other locations within the vessel. By linking these measures to the available imaging
19 modalities or later clinical outcomes, potentially new carotid biomarkers of cerebral or
20 cardiovascular health could be identified.

21

22 The within and between rater reliability of our QA criteria suggest they can be applied with
23 little inter- or intra-observer variability. A number of these criteria, such as the “White-Black-
24 White” criterion, are integral to CIMT measurement, while others, such as the exclusion of

1 focal plaque from the measurement box, were chosen to increase reproducibility. The
2 “Angle” criterion has relatively relaxed requirements for the angle of acquisition, as we
3 decided that the exact angle of acquisition was not as important as repeated measurements of
4 the two carotids in this single time point study, and therefore should not lead to failure of the
5 entire carotid study. With the development of a standardised interface for grading the quality
6 of the images acquired and a larger number of studies acquired it may be possible to develop
7 image analysis techniques that would automate the QA process further.

8

9 The impact of inclusion or exclusion of QA criteria on the model fit was very small and
10 therefore data released by UK Biobank includes all CIMT measures irrespective of the QA
11 flag. There was a higher rate of QA fails with older age, and the provision of QA flag may
12 therefore be of scientific interest. There is a distinct possibility that future analyses will reveal
13 that images that fail QA have predictive value in themselves. For example, it is possible that
14 highly tortuous carotid arteries would be more likely to fail QA, and that the tortuosity is
15 predictive of future cardiovascular events. The QA flag for each image is therefore provided
16 along with the CIMT measure on the UK Biobank data showcase (available at
17 biobank.ctsu.ox.ac.uk/showcase).

18

19 A major advantage of the QA process is that real-time feedback is possible during training.
20 The number of images failing QA during the course of the pilot phase more than halved
21 following such feedback based on QA measures, with a rapid fall on implementation of the
22 QA audit process and maintenance of lower levels thereafter. Interestingly, both left sided
23 angles of acquisition had a higher failure rate initially, and appeared to have a more rapid
24 improvement compared to right sided angles of acquisition. As we did not record handedness

1 of operators, we were unable to investigate this further. The audit process involved feedback
2 to the technicians of both number of image fails and reasons for image quality failures.
3 Furthermore, as each image could be identified by time and operator, the advice could be
4 personalised for individual technicians to improve their carotid imaging technique. Several
5 operators performed carotid imaging during the pilot phase and new operators started during
6 that period. The QA criteria were introduced as part of the training for new technicians and
7 each was required to show competency against the QA criteria in test cases before being
8 allowed to scan participants. Therefore the maintenance of a low failure rate provides
9 reassurance that the use of the QA criteria within training processes was also robust.

10 In summary, carotid images and semi-automated CIMT measures are now available from the
11 UK Biobank Imaging Enhancement Study. This is the first published description of the
12 protocol used for acquisition of these images and the rationale for the design. Furthermore,
13 we provide a detailed evaluation of the quality assurance process, description of a semi-
14 automated online tool for rapid image evaluation and demonstrate that the data generated fits
15 expected patterns of association with age and gender.

16

1

2 **Conflicts of interest**

3 SL is an employee of, and RB and RM are consultants to Panasonic Corporation. JP is an
4 employee of, and AN, MY and PL are consultants to Intelligent Ultrasound Ltd. SH, SG, NA,
5 CS, RC, PM, and PL are employees of or have received support from UK Biobank.

6

7

1 REFERENCES

- 2 1. Sudlow C, Gallacher J, Allen N, et al. UK Biobank: An Open Access Resource for
3 Identifying the Causes of a Wide Range of Complex Diseases of Middle and Old Age.
4 *PLoS Med* 2015; 12: e1001779.
- 5 2. Petersen SE, Matthews PM, Bamberg F, et al. Imaging in population science:
6 cardiovascular magnetic resonance in 100,000 participants of UK Biobank - rationale,
7 challenges and approaches. *J Cardiovasc Magn Reson* 2013; 15: 46.
- 8 3. Naqvi TZ, Lee M-S. Carotid Intima-Media Thickness and Plaque in Cardiovascular
9 Risk Assessment. *JACC Cardiovasc Imaging* 2014; 7: 1025–1038.
- 10 4. Polak JF, Pencina MJ, Pencina KM, et al. Carotid-wall intima-media thickness and
11 cardiovascular events. *N Engl J Med* 2011; 365: 213–21.
- 12 5. Nambi V, Chambless L, Folsom AR, et al. Carotid intima-media thickness and
13 presence or absence of plaque improves prediction of coronary heart disease risk: the
14 ARIC (Atherosclerosis Risk In Communities) study. *J Am Coll Cardiol* 2010; 55:
15 1600–7.
- 16 6. Vanoli D, Wiklund U, Lindqvist P, et al. Successful novice’s training in obtaining
17 accurate assessment of carotid IMT using an automated ultrasound system. *Eur Heart*
18 *J Cardiovasc Imaging* 2014; 15: 637–42.
- 19 7. Herder M, Johnsen SH, Arntzen K a., et al. Risk Factors for Progression of Carotid
20 Intima-Media Thickness and Total Plaque Area: A 13-Year Follow-Up Study: The
21 Tromsø Study. *Stroke* 2012; 43: 1818–1823.
- 22 8. Clarke R, Du H, Kurmi O, et al. Burden of carotid artery atherosclerosis in Chinese
23 adults: Implications for future risk of cardiovascular diseases. *Eur J Prev Cardiol*
24 2017; 24: 647–656.
- 25 9. Petersen SE, Matthews PM, Francis JM, et al. UK Biobank’s cardiovascular magnetic
26 resonance protocol. *J Cardiovasc Magn Reson* 2015; 18: 8.
- 27 10. Wilman HR, Kelly M, Garratt S, et al. Characterisation of liver fat in the UK Biobank
28 cohort. *PLoS One* 2017; 12: e0172921.
- 29 11. Miller KL, Alfaro-Almagro F, Bangerter NK, et al. Multimodal population brain
30 imaging in the UK Biobank prospective epidemiological study. *Nat Neurosci* 2016; 19:
31 1523–1536.
- 32 12. Touboul P-J, Hennerici MG, Meairs S, et al. Mannheim Carotid Intima-Media
33 Thickness and Plaque Consensus (2004-2006-2011). *Cerebrovasc Dis* 2012; 34: 290–
34 296.
- 35 13. Stein JH, Korcarz CE, Hurst RT, et al. Use of Carotid Ultrasound to Identify
36 Subclinical Vascular Disease and Evaluate Cardiovascular Disease Risk: A Consensus
37 Statement from the American Society of Echocardiography Carotid Intima-Media
38 Thickness Task Force Endorsed by the Society for Vascular. *J Am Soc Echocardiogr*
39 2008; 21: 93–111.
- 40 14. Bots ML, den Ruijter HM. Should We Indeed Measure Carotid Intima-Media
41 Thickness for Improving Prediction of Cardiovascular Events After IMPROVE? *J Am*
42 *Coll Cardiol* 2012; 60: 1500–1502.

- 1 15. Nambi V, Chambless L, He M, et al. Common carotid artery intima-media thickness is
2 as good as carotid intima-media thickness of all carotid artery segments in improving
3 prediction of coronary heart disease risk in the Atherosclerosis Risk in Communities
4 (ARIC) study. *Eur Heart J* 2012; 33: 183–90.
- 5 16. Feinstein AR, Cicchetti D V. High agreement but low kappa: I. The problems of two
6 paradoxes. *J Clin Epidemiol* 1990; 43: 543–9.
- 7 17. Gwet KL. Computing inter-rater reliability and its variance in the presence of high
8 agreement. *Br J Math Stat Psychol* 2008; 61: 29–48.
- 9 18. Feng GC. Factors affecting intercoder reliability: a Monte Carlo experiment. *Qual*
10 *Quant* 2013; 47: 2959–2982.
- 11 19. R Core Team. R: A Language and Environment for Statistical
12 Computing <https://www.r-project.org/> (2016).
- 13 20. Liao X, Norata GD, Polak JF, et al. Normative values for carotid intima media
14 thickness and its progression: Are they transferrable outside of their cohort of origin?
15 *Eur J Prev Cardiol* 2016; 23: 1165–1173.
- 16 21. Singh S, Nagra A, Maheshwari P, et al. Rapid Screening for Subclinical
17 Atherosclerosis by Carotid Ultrasound Examination: The HAPPY (Heart Attack
18 Prevention Program for You) Substudy. *Glob Heart* 2013; 8: 83–9.
- 19 22. Vanoli D, Lindqvist P, Wiklund U, et al. Fully automated on-screen carotid intima-
20 media thickness measurement: a screening tool for subclinical atherosclerosis. *J Clin*
21 *Ultrasound* 2013; 41: 333–9.
- 22 23. Baldassarre D, Hamsten A, Veglia F, et al. Measurements of Carotid Intima-Media
23 Thickness and of Interadventitia Common Carotid Diameter Improve Prediction of
24 Cardiovascular Events. *J Am Coll Cardiol* 2012; 60: 1489–1499.
- 25 24. Inaba Y, Chen JA, Bergmann SR. Carotid plaque, compared with carotid intima-media
26 thickness, more accurately predicts coronary artery disease events: A meta-analysis.
27 *Atherosclerosis* 2012; 220: 128–133.

28

29

1 **Table 1. Carotid intima-media thickness by age.**

2

3

Age (years)	n	Overall mean (sd)	Female n (%)	Female mean (sd)	Male mean (sd)	Poor QA n (%)
≤ 50	170	588 (84)	95 (56%)	578 (76)	600 (93)	23 (14%)
51-60	787	628 (107)	451 (57%)	607 (83)	657 (126)	119 (15%)
61-70	1180	701 (123)	596 (51%)	675 (104)	728 (134)	238 (20%)
≥ 71	421	763 (145)	175 (42%)	739 (126)	781 (155)	143 (34%)

4

5

6 “Poor QA” refers to studies where at least one of the four angles of acquisition was deemed to
7 not pass quality assurance criteria. CIMT is measured in micrometres. Abbreviations: CIMT,
8 carotid intima-media thickness; sd, standard deviation.

9

1 **Table 2. Linear regression, with carotid intima media thickness as outcome variable.**

2

3

	Basic model	Incorporating QA
n	2558	2558
Adjusted R ²	0.19	0.21
Average CIMT for ≤ 50 year old females	553 (542 - 564)	551 (539 - 562)
Increase per decade	61 (55 - 67)	58 (52 - 63)
Increase in males	48 (39 - 57)	45 (36 - 54)
Increase if study had any image failing QA		46 (35 - 57)

4

5 CIMT is measured in μm , with the 95% confidence interval shown in brackets. The average

6 CIMT for ≤ 50 year old females is based on the linear regression model intercept. Abbreviations:

7 CIMT, carotid intima media thickness; QA, quality assurance.

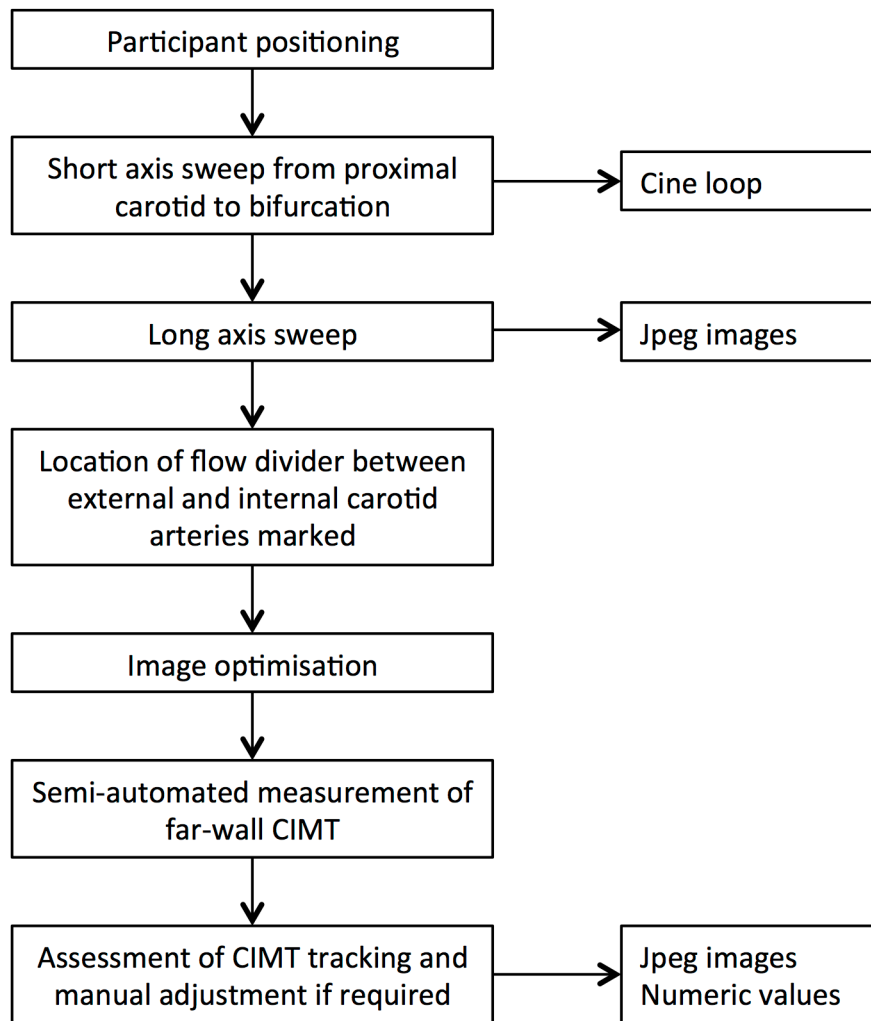
8

9

10

1 **Figure 1. Overview of UK Biobank carotid ultrasound protocol.**

2



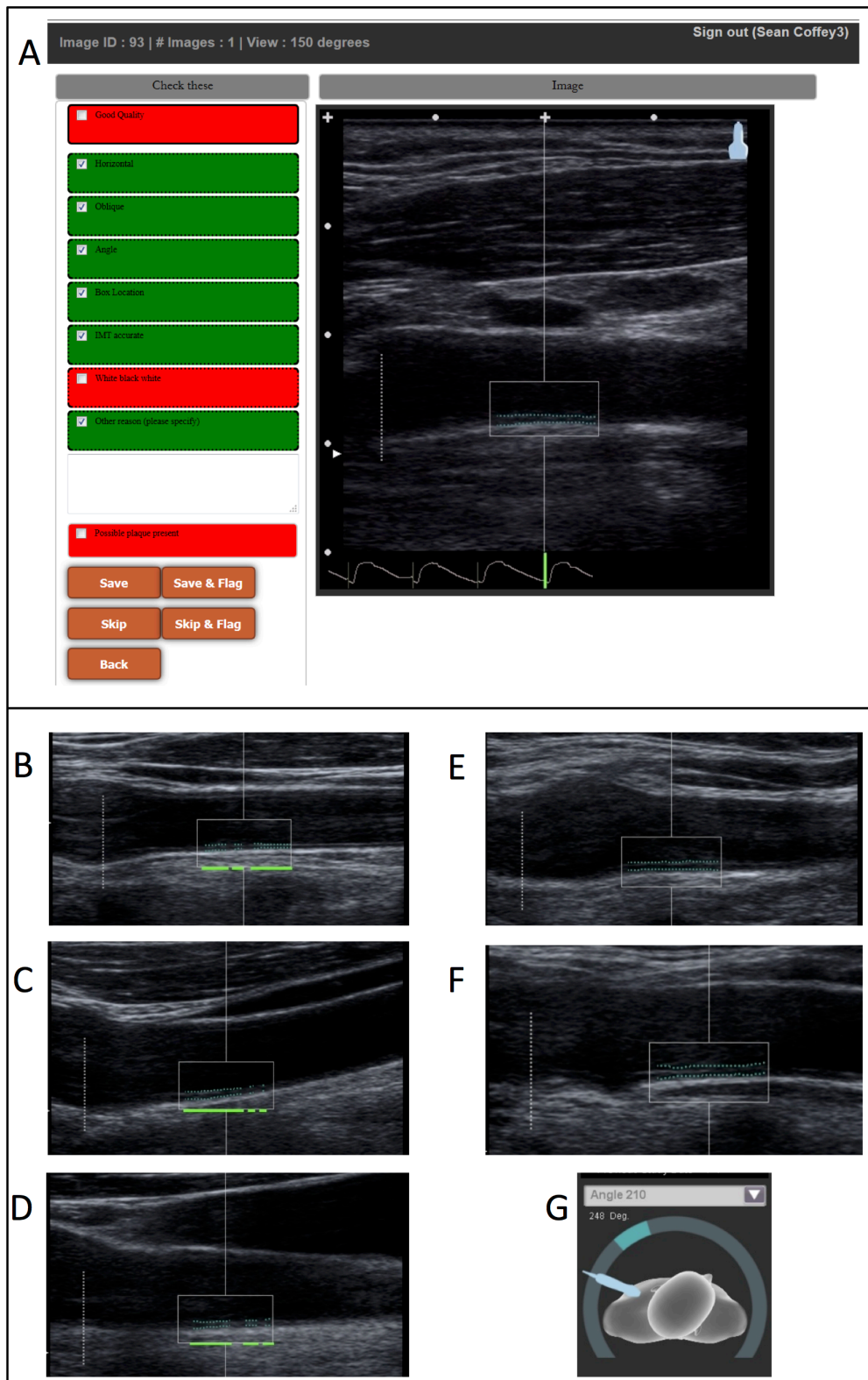
3

4

5 Outputs from the protocol are shown on the right of the figure. Four separate sets of CIMT
6 measurements were obtained: right carotid at 150°, right carotid at 120°, left carotid at 210°, and
7 left carotid at 240°. Numeric values stored were maximum, mean, and minimum CIMT.

8 Abbreviations: CIMT, carotid intima-media thickness.

1 **Figure 2. Quality assurance grading process.**



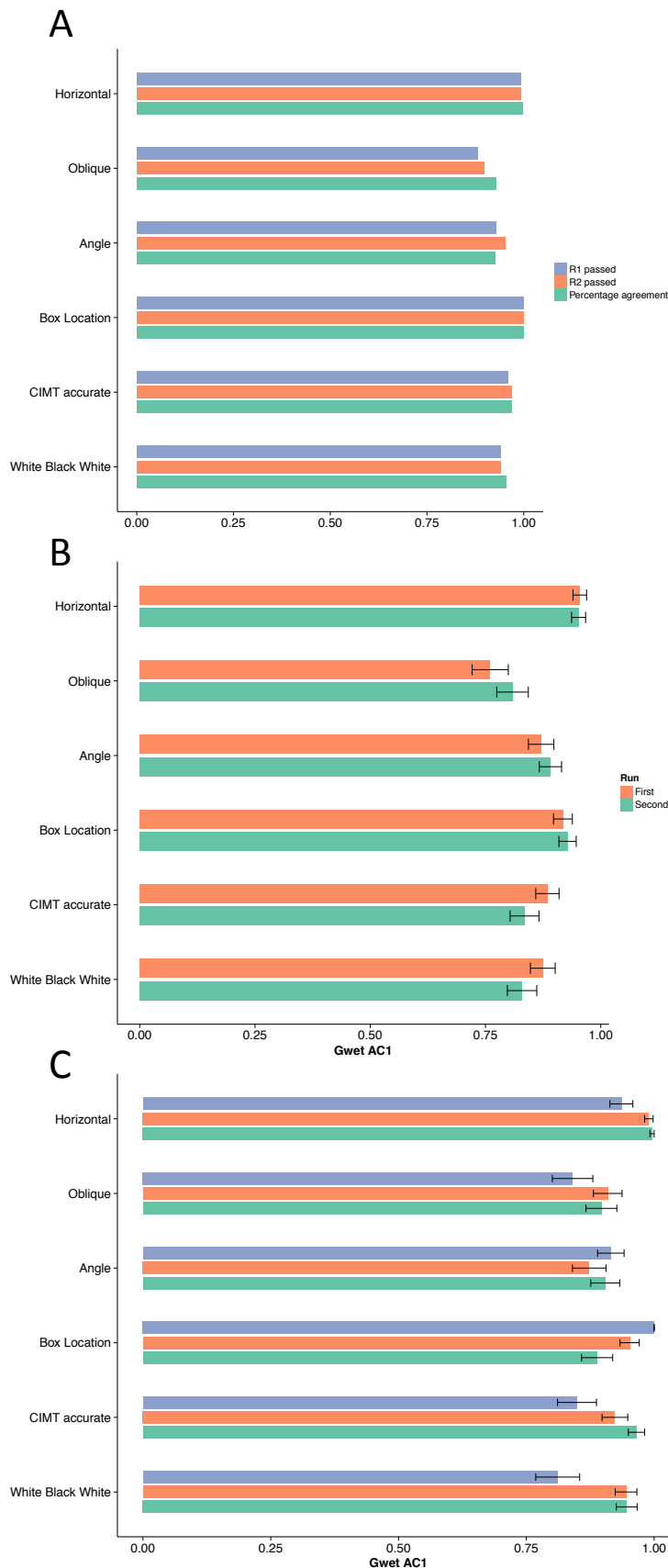
2

3 Figure showing the grading interface (A) and example images (lower panel). The grading
4 interface shows an image not meeting the "White-black-white" quality assurance (QA) criterion
5 (indicated by the lack of a tick in this box). The example images show a good quality image (B),

- 1 and images failing quality assurance criteria: Horizontal (C), Oblique (D), Box location (E), CIMT
- 2 tracking (F), and Angle (G). Assessment of the Angle criterion was facilitated by the use of an
- 3 automated transducer position identifier, as shown in 2G.

Supplementary Material for Coffey et al, “Protocol and Quality Assurance for Carotid Imaging in 100,000 Participants of UK Biobank: Development and Assessment”

Supplementary Figure 1. Variability of quality assurance criteria.

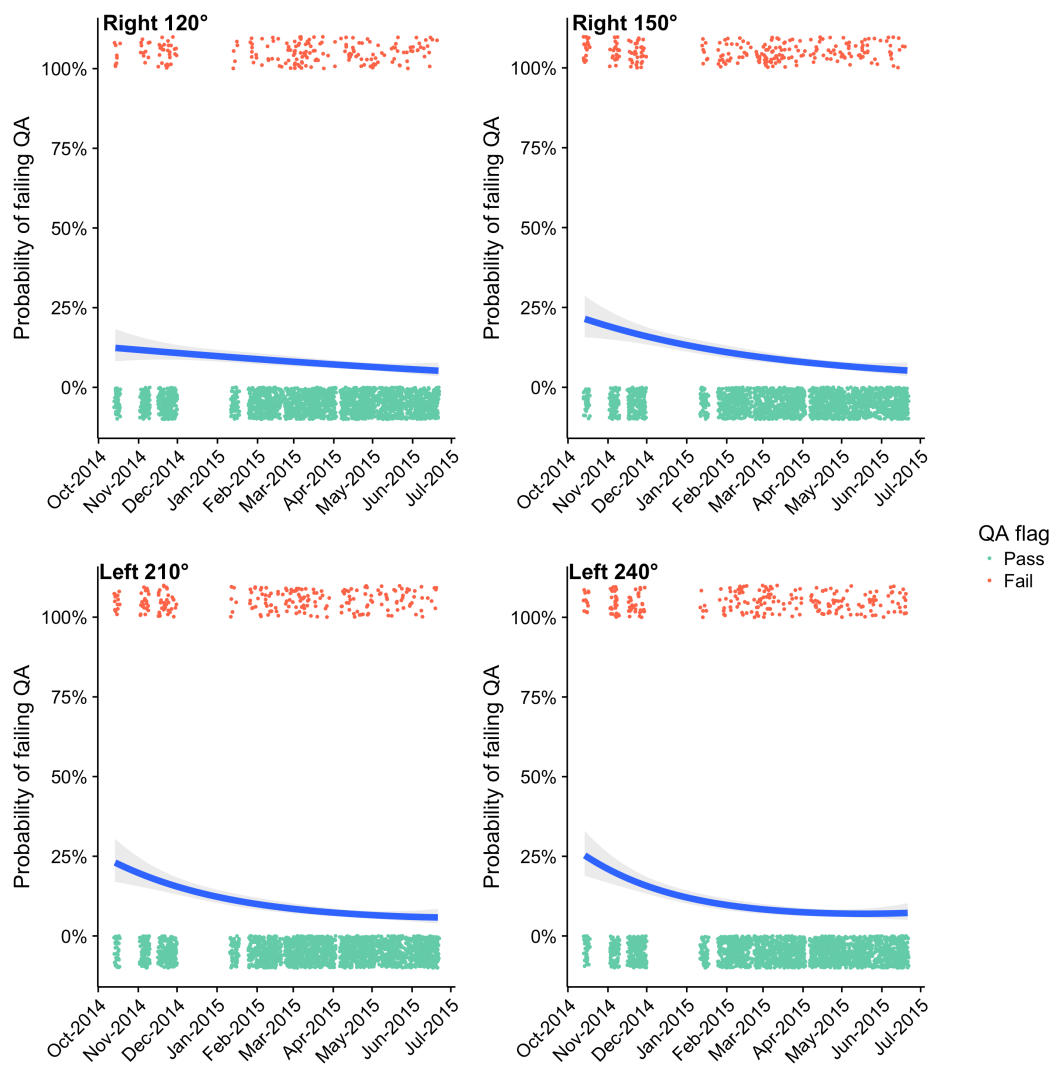


(A) Percentage of images meeting quality assurance criterion during first run (R1), second run (R2), and the percentage agreement between runs.

(B) Interobserver agreement measured by Gwet AC1 statistic for first and second runs.

(C) Intraobserver agreement measured by Gwet AC1 statistic, with each colour representing each of the three different graders. Error bars represent 95% confidence intervals.

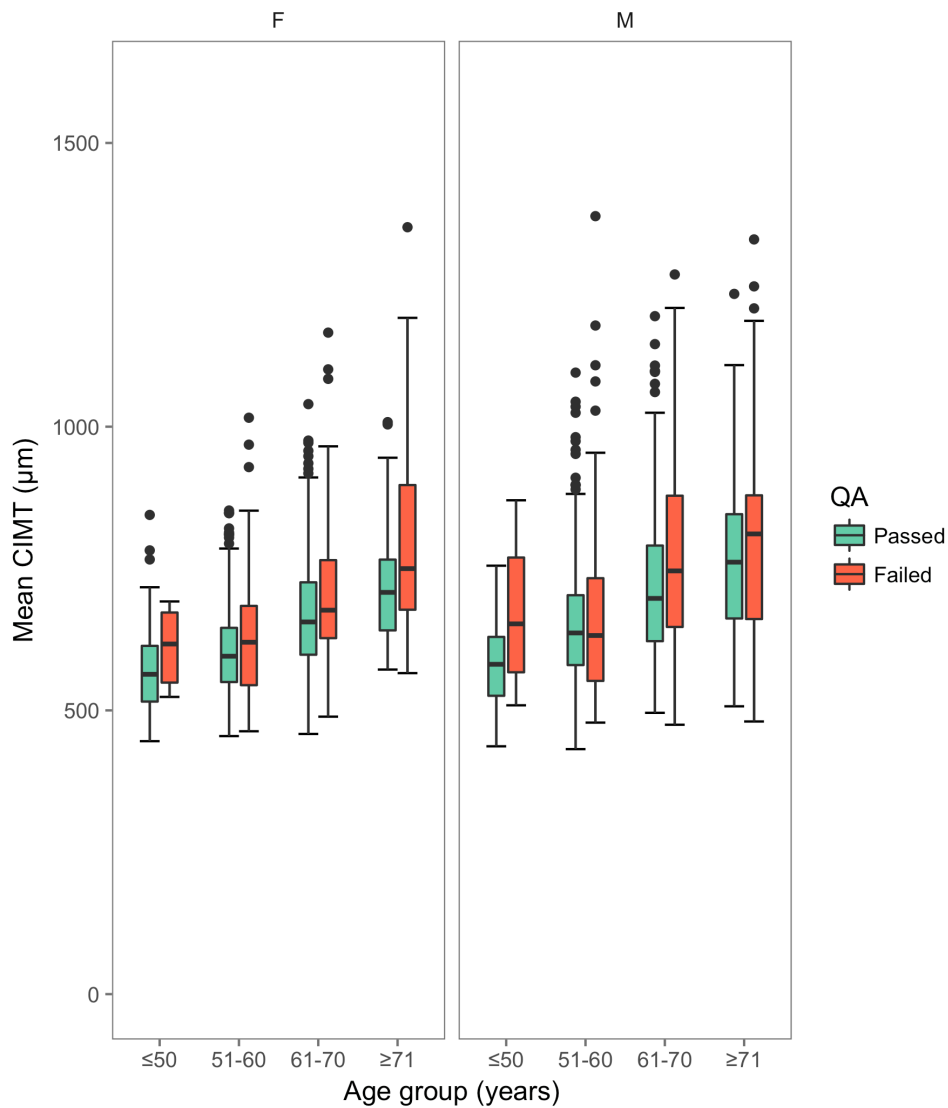
Supplementary Figure 2. Images failing quality assurance over time.



Curves were fitted with a polynomial logistic model, with shaded area representing the 95% confidence interval. Images failing QA are shown as dots at the top of each graph, while those passing are shown at the bottom. Increasing numbers of participants led to narrower confidence intervals over time.

Abbreviations: QA, quality assurance.

Supplementary Figure 3. Carotid intima media thickness, shown by age, sex, and QA status.



QA failed refers to studies where at least one of the four angles of acquisition was deemed to not pass quality assurance criteria. Abbreviations: CIMT, carotid intima media thickness; F, female; M, male; QA, quality assurance.

Supplementary Table 1. Summary of inter-observer agreement according to quality metric.

Quality criteria	Percentage agreement	Inter-observer Gwet AC1 (95% CI)	Intra-observer Gwet AC1 (95% CI)
White Black White	88.0%	85.2% (82.2% - 88.1%)	90.1% (87.3% - 92.9%)
CIMT accurate	88.4%	85.9% (83.1% - 88.8%)	91.3% (88.6% - 93.9%)
Box Location	92.9%	92.3% (90.3% - 94.3%)	94.7% (93% - 96.3%)
Angle	89.8%	88.1% (85.5% - 90.7%)	89.8% (86.8% - 92.7%)
Oblique	83.5%	78.4% (74.8% - 82.1%)	88.2% (85% - 91.5%)
Horizontal	95.6%	95.3% (93.8% - 96.8%)	97.4% (96.2% - 98.5%)

The inter-observer and intra-observer Gwet AC1 statistic is the mean value across quality criteria assessment runs and observers, respectively. Abbreviation: CI, confidence interval.