

# Annals of Hepatology

## Inter and inpatient evolution of Hepatitis C virus

--Manuscript Draft--

<b>Manuscript Number:</b>	ANNHEPATOL-D-14-00147R1
<b>Full Title:</b>	Inter and inpatient evolution of Hepatitis C virus
<b>Article Type:</b>	Review
<b>Section/Category:</b>	Viral Hepatitis
<b>Keywords:</b>	HCV; quasispecies; Liver disease
<b>Corresponding Author:</b>	Federico A Di Lello, Ph.D. Cátedra de Virología, Facultad de Farmacia y Bioquímica, Universidad de Buenos Aires Buenos Aires, ARGENTINA
<b>First Author:</b>	Federico A Di Lello, Ph.D.
<b>Order of Authors:</b>	Federico A Di Lello, Ph.D. Andrés CA Culasso, Ph.D Rodolfo H Campos, Ph.D
<b>Manuscript Region of Origin:</b>	ARGENTINA
<b>Abstract:</b>	Hepatitis C virus (HCV) has a short replication time, high mutation rates and large population sizes, all of which make it an excellent experimental model for evolution studies, because evolution can be visualized in real-time. In this review, we discuss the implications to study HCV evolution at the interpatient and inpatient levels of infection. The HCV interpatient dynamics is relatively slow, because the generation time is generally long. Then, at population level, the HCV diversity originated by the high mutation and replication rates is modulated by the bottleneck at transmission. Thus, when the virus is transmitted to other hosts, viral diversity is reduced as a result of the founder effect. On the other hand, during inpatient infection, HCV evolves rapidly, resulting in quasispecies. Accumulated evidence suggests that this quasispecies composition of the HCV population within the same individual may allow the virus to evade the immune response or escape treatment, leading to chronic infection. Thus, a better understanding of the complexities underlying the molecular evolution of HCV in natural populations is needed before accurate predictions of viral evolution can be made. In summary, HCV evolves both within and among patients. Consequently, HCV evolution should be studied at both levels in order to better understand the natural history of the virus and its potential implications in epidemiology, outcome of infection and progression of liver disease.
<b>Manuscript Classifications:</b>	2: CLINICAL AND BASIC HEPATITIS C VIRUS HCV

Buenos Aires, December 2014

Dear Dr. Nahum Méndez-Sánchez  
Editor in chief of Annals of Hepatology

-----

**Ref. ANNHEPATOL-D-14-00147**

We are submitting a revised version of our manuscript "Inter and inpatient evolution of Hepatitis C virus" by Di Lello *et al.*" We have considered all the reviewer's observations. We hope that now the revised manuscript will be suitable for publication.

Thanking you in advance for your kind attention and support, we remain respectfully yours.

Dr. Federico A. Di Lello

Response to the reviewers:

First, we would like to thank your pertinent and helpful comments and suggestions to improve our study.

Our responses appear in bold below your comment.

**Reviewer #1: ANNHEPATOL-D-14-00147**

This is an interesting review where authors address the evolution within and among patients of hepatitis C virus (HCV). This manuscript could help to better understand the natural history of the virus and its potential implications in epidemiology, outcome of infection and the progression of liver disease.

**Major comments:**

1. In Paragraph: "The evolution of HCV is mostly determined by its own? Extremely complex to study" authors should add references at the end of these facts.

**Author's reply: The references were added in the revised manuscript at the end of each statement (Page 3).**

2. Page 6: references 24-26 do not correspond to the statements in this paragraph. More appropriate references should be added to the text described.

**Author's reply: As you suggested, the paragraph was modified and more appropriate references were added to the text described in the revised manuscript (page 5).**

3. Page 8, in paragraph. "Additionally, HCV diversity has also implications for the transmission. At the 1980-90s it was known? "Authors should add references at the end of these facts.

**Author's reply: The references at the end of these facts were added in the revised manuscript and the phrase "At the 1980-90s..." was removed (page 6)**

4. Authors should carefully review the manuscript to complete all necessary references in the appropriate place in the manuscript, ej. Page 10, first paragraph, there are not references in these facts, authors should add it.

**Author's reply: The manuscript was carefully review and the citation was added in the revised manuscript (page 9)**

5. It would be interesting to discuss the meaning and impact of these concepts of viral genetic variability and its relation to clinical presentation and outcome of patients

infected with HCV, in order to understand how genetic variability affects pathobiology of the disease.

***Author's reply:*** According to the reviewer's comment, a discussion about this topic has been added to the text in the section "Inpatient Evolution" (page 8 and 9).

6. It would be interesting to describe the inpatient genetic variability in presence and absence of antiviral treatment in those with SVR and non-response.

***Author's reply:*** This topic was described and the references were added accordingly in the section "Inpatient Evolution" (page 9).

7. It could be helpful for readers to add as a fig 1, a schematic picture about bottleneck effect over genetic variability and predominance of viral clusters and further intra and inter-patients virus evolution.

***Author's reply:*** We consider that the phylogenetic trees presented in the original manuscript already show by itself the bottlenecks effect in the genetic diversity. However, we amended the figures to highlight those events. In this way, a schematic picture about bottleneck effect (indicated with arrows or dotted lines) over genetic variability and predominance of viral clusters and further intra and inter-patients virus evolution was added as a part of figures 1 and 2. Additionally, the genetic diversity trough the time measured by the Bayesian Skyline methodology was added as a light blue shaded area in each figure.

8. Figure 1 and 2, in order to get readers attention, graphics should be more informative. Same for both.

***Author's reply:*** Changes have been applied accordingly.

**Reviewer #2:** Summary: in this review the authors discuss inter and inpatient evolution of hepatitis C, with development of quasispecies.

Comments:

1. The authors suggest that inpatient evolution of quasispecies is important for the success or failure of antiviral therapy. Could they further support this proposal with evidence? Are specific quasispecies identified during unsuccessful antiviral therapy compared to basal?

**Author's reply:** The text was modified accordingly and the effect of quasispecies evolution on HCV treatment was discussed and referenced (see Inpatient Evolution section: page 9).

2. The authors state that: "For this reason, the initial enthusiasm and confidence in the combinations based on the direct-acting antiviral (DAA) therapy have been tempered by the evidence of the rapid emergence of resistant variants to DAA during these treatments (49-51)." In the opinion of the reviewer this is a remarkable statement in 2014, with the introduction of various DAA and sustained viral response rates of more than 90%.

**Author's reply:** According to review suggestions the phrase in the original manuscript was replaced by: ..."Thus, a rapid emergence of resistant variants was detected in the majority of patients with treatment failure to direct-acting antiviral (DAA)...", (Page 7).

3. The authors are mainly focused on viral evolution. I would advise to add a discussion with some detailed information on the current concepts of innate and adaptive host immunity in relation to hepatitis C virus (clearance vs persistence).

**Author's reply:** As you suggested, a brief discussion with the current concepts of innate and adaptive host immunity in relation to hepatitis C virus was added in the first paragraph of page 7.

4. Of note it has been reported that hepatitis C virus infection at young age is associated with better spontaneous clearance than infection at later age (e.g. studies in hemophiliac's by Mauser-Bunschoten et al. Could the authors comment on this in relation to quasispecies evolution?

***Author's reply:*** The topic about the impact of host age in the quasispecies evolution of HCV is very interesting and may be a useful piece of information in the pediatric field. Additionally to the report that you pointed out (which was included in the revised manuscript, page 7 and reference number 47), other reports may show that viral diversity is associated with different outcomes in adult and children patients (Gismondi MI, et al. J Viral Hepat 2009;16:332-9, Valva P, et al. 2014 Jun 19. doi: 10.1111/1469-0691.12728. [Epub ahead of print]). However, we preferred not to discuss in detail this topic because of the overall length of the review.

5. The review could be shortened a bit.

***Author's reply:*** because both reviewers asked for additional information we could not shorten the review. However, we removed some sections of the review in order not to extend it even more.

**TITLE:** Inter and inpatient evolution of Hepatitis C virus

**RUNNING TITLE:** Inter and inpatient HCV evolution

**AUTHORS:** \*Federico A. Di Lello, Andrés C. Culasso, Rodolfo H. Campos.

**AFFILIATION:** Cátedra de Virología, Facultad de Farmacia y Bioquímica, Universidad de Buenos Aires, Ciudad Autónoma de Buenos Aires, Argentina. Consejo Nacional de Investigaciones Científicas y Técnicas CONICET.

**\*CORRESPONDING AUTHOR:** Dr. Federico A. Di Lello, e-mail: fadilello@ffyb.uba.ar. Cátedra de Virología, Facultad de Farmacia y Bioquímica, Universidad de Buenos Aires. Address: Junín 954, 4th floor. (1113) Ciudad Autónoma de Buenos Aires, Argentina. Telephone: +54 11 4964 8200.

**SUPPORT:** This work was supported by the Agencia Nacional de Investigaciones Científica y Técnicas PICT 0705, Universidad de Buenos Aires UBACyT 405, Consejo Nacional de Investigaciones Científicas y Técnicas CONICET PIP 0215.

## **ABSTRACT**

Hepatitis C virus (HCV) has a short replication time, high mutation rates and large population sizes, all of which make it an excellent experimental model for evolution studies, because evolution can be visualized in real-time. In this review, we discuss the implications to study HCV evolution at the interpatient and inpatient levels of infection. The HCV interpatient dynamics is relatively slow, because the generation time is generally long. Then, at population level, the HCV diversity originated by the high mutation and replication rates is modulated by the bottleneck at transmission. Thus, when the virus is transmitted to other hosts, viral diversity is reduced as a result of the founder effect. On the other hand, during inpatient infection, HCV evolves rapidly, resulting in quasispecies. Accumulated evidence suggests that this quasispecies composition of the HCV population within the same individual may allow the virus to evade the immune response or escape treatment, leading to chronic infection. Thus, a better understanding of the complexities underlying the molecular evolution of HCV in natural populations is needed before accurate predictions of viral evolution can be made. In summary, HCV evolves both within and among patients. Consequently, HCV evolution should be studied at both levels in order to better understand the natural history of the virus and its potential implications in epidemiology, outcome of infection and progression of liver disease.

**KEYWORDS:** HCV; quasispecies; liver disease.



## INTRODUCTION

Hepatitis C Virus (HCV) is an enveloped single-stranded positive RNA virus (1) that currently infects approximately 3% of the world's population (2). In about 80% of infections, HCV causes a silent chronic hepatic illness that can lead to fibrosis, cirrhosis and hepatocellular carcinoma (3). This RNA virus displays high genetic diversity. Seven genetic clades and various subtypes have been described and are associated either with a specific geographic distribution or with different biological features (4-8). HCV evolves very rapidly during the progress of infection, resulting in genetically diverse viral populations whose composition is determined by a combination of evolutionary processes that include a short generation time, high mutation rates, large population sizes, natural selection and random genetic drift. All these mechanisms allow adaptation of viruses to selective pressures and make HCV an excellent experimental model where evolution can be monitored in real-time (9,10). The evolution of HCV is mostly determined by its own characteristics and by host-mediated or antiviral selection pressures (11-17). Nevertheless, despite their apparent simplicity and advantages, viral populations exhibit features that make their evolutionary dynamics extremely complex to evaluate (11,12). Firstly, in nature, HCV exists in an intricate hierarchy of populations, from single infected cells to global pandemics. Secondly, the long infectious periods, which are in the order of years, mean that both inter- and inpatient evolutionary patterns can be observed. Additionally, HCV also exists within its hosts as a dynamic pool of genetically distinct but closely related variants referred to as "quasispecies" (11,12). Accordingly, HCV appears to exhibit qualitatively different evolutionary dynamics when its genetic diversity is studied at different levels. In this way, the substitution rate of HCV may differ in intra- and interpatient as well as among the different regions of the genome. Then, its fast adaptation allows this virus to prevail over natural or artificial barriers such as host defenses, pathogeny and drug therapy (13-17).

As mentioned above, regardless of their rapid growth, HCV virus populations suffer repeated bottlenecks, both within hosts and when transmitted from host to host. The population bottleneck can be defined as a marked reduction in the number of viral genomes within a population which leads to significant effects. Particularly, intrapatient evolutionary effects of bottlenecks can be observed by comparing sequences of quasispecies that represent different virions from a single chronically infected patient over several years (18,19). On the other hand, in interpatient evolution, the size of the viral population replicating is a very informative point to consider. Additionally, when the virus is transmitted, selection can act deeply in large populations, whereas the random effect of genetic drift is more severe in small populations.

Thus, one of the largest distinctions between these two levels is that interpatient evolution is mostly conducted by numerous bottlenecks arising from transmission events, whereas in intrapatient evolution the bottlenecks are not very relevant while the patient is not treated (20). The two patterns outlined above suggest that different evolutionary and population genetic processes should be inferred from inter- and intrapatient sequence data. For all these reasons, understanding HCV evolution is important itself but also in view of the fact that viral diversity could be relevant in the outcome of the infection and liver disease progression (7, 8, 21-23).

## **INTERPATIENT EVOLUTION**

As it happened with HIV, HCV may have been transmitted to humans through interspecific infections that were only possible with the demographic changes that occurred 50-100 years ago. The fact that HCV is transmitted mainly through parenteral routes implicates the transmission through unsterilized needles, blood transfusion and injecting drug use (IDU). The current HCV screening and the expansion of needle exchange programs have led to reductions in blood transfusion risk and significant falls in HCV incidence among IDUs (24). For this reason, the HCV interpatient dynamics is relatively slow, since the time between transmission events is generally long (months or years) (25). Then, at population level, the HCV diversity originated with high viral mutation and replication rates is modulated by the bottleneck at transmission (26). Each new host represents a novel environment for the virus. Such extreme genetic bottleneck associated with transmission may largely depend on the structure of the virus population in the donor host, the virus genotype, the host factors, and the rapid and radical decline in population size that normally reduces the population's genetic diversity. Accordingly, bottleneck could be enhanced by the influence of host factors such as the favorable IL28B genotype rs12979860 (CC) that was associated with the spontaneous clearance (SC) of HCV in several studies (27, 28). Additionally, the HCV non-1 genotypes have also been related with SC increasing the importance of HCV diversity in the persistence and pathogeny of this virus (29).

On the other hand, if the structure of virus population is genetically heterogeneous, transmission bottlenecks could be determined partially by the genetic diversity available in the host. Therefore, among-virus competition after transmission typically generates a strong population bottleneck, making it very unlikely that multiple viral lineages will be repeatedly transmitted (30-32). Consequently, the phylogenetic structure of HCV at the population level reflects the demographic and spatial history of transmission (26). In this context, it is known that HCV phylogenetic trees often span

several decades so the time when two viral lineages coalesce is close (relative to the timescale of the phylogeny) to the actual transmission times. Accordingly, interpatient phylogenies of HCV sampled through time are not stepwise and show the persistence of multiple lineages through time (Figure 1). The shapes of these trees are primarily determined by neutral demographic and spatial dynamics in both immune-mediated positive selection and purifying selection for replication ability (26-33). In this way, the evolutionary analysis has shed light on the origins of HCV and on the epidemic spread of viral variants in different geographic locations and populations.

Additionally, HCV diversity has also implications for the transmission. It is known that genotype distribution is associated with the mode of transmission, with subtypes 1a, 3a and 4 being mostly IDU-related and genotypes 1b and 2 associated with blood transfusion and unsafe medical procedures (34-36). Currently, this distribution is changing due to the controls in transfusion procedures, the increment of IDUs, the immigration and the controls in vertical and sexual transmission. A clear example of this is the increasing prevalence of genotype 4 in Europe (36-39). HCV genotype 4 is considered a difficult-to-treat genotype in HCV-monoinfected and HIV/HCV coinfecting patients, because the rate of sustained virological response to pegylated interferon plus ribavirin is poorer than that for HCV genotypes 2 or 3 (8, 40-43). Then, this issue is of importance since the HCV genotype and subtype are also very relevant in terms of antiviral therapy.

## **INTRAPATIENT EVOLUTION**

HCV is among the most successful of all persistent human viruses. Chronic infection is seen in up to 75% of those infected by successfully undermining virus-specific immunity (44). Previous studies suggest that HCV alters the host defense and innate immunity early during infection through a variety of complementary mechanisms, thereby facilitating chronic infection and leaving host defenses to other infectious agents intact (45). The mechanism responsible for the high rate of persistence is attributed to the efficient capacity of generation and fixation of escape mutants associated to HLA in the non structural protein of HCV, which allows the virus to evade the adaptive and innate components of the host's immune system (46). Additionally, HCV capacity of persistence is strongly influenced by the age and the nature of the host's innate and adaptive antiviral immunity. In this sense, several studies had shown that IL28B, CXCL10, IFNL3, HLA class I and II are associated with outcome of HCV and may explain an important percentage of spontaneous clearance of HCV infection (47-53). The misincorporation of nucleotides during HCV replication and the subsequent effects of selection pressure, from either neutralizing antibodies or cytotoxic T lymphocytes, as well as the drift that fix substitutions in populations, represent the fundamental driving force in intrapatient evolution (21, 54, 55). As a consequence, HCV evolves very rapidly during intrapatient infection, resulting in variants whose dynamic composition is determined by a combination of evolutionary processes that include mutation, replication rate, natural selection, and random genetic drift at transmission time. In this sense, accumulated evidence suggests that the genetic variation of HCV within the same individual may allow the virus to evade the immune response, leading to chronic infection (19). Virtually in a patient infected with HCV, it is likely that all possible variants are present in the quasispecies at every moment. However, the point is to determine which the threshold of variant frequency for establishing a particular phenotype is, either a variant resistant to treatment or a

variant causing more severe liver damage. Thus, a rapid emergence of resistant variants was detected in the majority of patients with treatment failure to direct-acting antiviral (DAA) (56-59). However, this is not an unexpected finding. Naturally, HCV can produce approximately  $10^{12}$  virus particles per day (60). Furthermore, the viral replication complex lacks proofreading capacity, leading to a large number of mutants. As a result, the virus population is a highly complex and continuously changing mutant spectrum or mutant cloud known as quasispecies (61). These are the lowest level of viral heterogeneity variation with only 1 to 2% and, thus, the major challenge with regard to resistance to treatment (61). Despite the fact that, in theory, an active HCV infection can produce all possible mutants in just one day, not all are able to persist in the population. This is because, in the viral genome, there are constraints with restrictions to change since most mutations generate viral variants that have a reduced replicative ability and, therefore, do not proliferate. However, this will surely be different for each patient because of the multiplicity of factors involved in each process related to viral infection.

Phylogenetic analyses of inpatient evolution reconstructed from HCV genomes sampled from multiple time points have mostly revealed two or more genetically distinct co-existing viral lineages that are not detected at all sampling times (Figure 2). This phenomenon is seen in both acute (62) and chronic infection (17, 63-65). Then, the inpatient tree topology is manifested by a temporal structure that shows continual adaptation to the patient immune responses and by high rates of lineage extinction which result in a modest genetic diversity at any time point. This suggests that the succeeding viral population is not always immediately derived from the preceding population and sometimes would be the effect of evolutionary shift. Briefly, regardless of the complexity or diversity of the viral populations at the early stage of infection, HCV evolves towards genetic diversification following selective pressure. Once the environment becomes stable, the entire population tends towards homogeneity (18).

Then, HCV inpatient evolution, which may be driven by adaptive selection, becomes important from a clinical perspective because it contributes to the variability in disease progression and development of drug resistance. In this sense, pathobiological studies linking nucleotide and amino acid sequences with clinical findings have identified relationships between certain genotypes and characteristic biological properties (23). For example, HCV-3 infection was found to be associated with a high level of liver steatosis (66). At quasispecies level it has been reported that an increase in HVR1 diversity during acute infection predicts progression to chronic disease, whereas a decrease correlates with resolution of the disease (21).

On the other hand, it has been extensively described the effect of genetic variability between HCV genotypes and subtypes on response to therapy. HCV-1 and 4 were found to be more resistant to interferon based therapies than HCV-2 and 3 and, in the same way, HCV-1b respond better than HCV-1a (67,68). However, there is contradictory data about the influence of quasispecies on treatment response (69-72). Some reports have demonstrated that resistant mutants are present in DAA naïve-patients as either dominant or minority species (56, 73). When treated with DAA, resistant variants, initially present as minority species, may expand to occupy the free replicative space, thus becoming the dominant variant (72, 74). Consequently, this may lead to failure of antiviral regimen. In this context, it has been reported that mutations need to be present at a certain frequency to result in a measurable phenotypic effect (75, 76). However, more recently, literature has emerged that offers contradictory findings about this topic (72, 77). For all these reasons, the study of viral genetic variation and the emergence of drug resistance are of major importance in the era of new treatments.

## **CONCLUSION**

In inpatient evolution, once the virus is installed in the new host, the first molecular events occurring immediately after may result in the generation of a highly

heterogeneous viral population (20,26). Subsequently, the HCV specific adaptive immunity probably shapes this founder population into a dynamic quasispecies complex, each of which may become dominant at different phases of HCV infection. Then, negative selection acts to achieve a stable adaptation to the host. HCV evolution is therefore defined mainly by two distinct mechanisms: drift and shift on the variants present in a chronic infected patient. This consideration implies that succeeding dominant subpopulations may not be directly derived from each other but may rather share a common ancestor.

Lastly, in the interpatient evolution, the transmission to a new host represents a novel environment for the virus. Such extreme genetic bottleneck may largely depend on the inoculum and the structure of the virus population in the donor host.

In conclusion, the long infectious period of HCV means that evolution occurs both within and among patients. Consequently, the evolution of HCV should be studied both at interpatient level (bottleneck at transmission) to better understand the natural history of the virus and its potential implications in epidemiology and, at inpatient level (adaptation to the exogenous and host's pressures) to better understand the outcome of infection and the progression of liver disease.



## REFERENCES

- 1 Choo QL, Kuo G, Weiner AJ, Overby LR, Bradley DW, Houghton M. Isolation of a cDNA clone derived from a blood-borne non A non B viral hepatitis genome. *Science*. 1989; 244: 359-362.
- 2 Lavanchi D. The Global Burden of Hepatitis C. *Liver Int*. 2009; 29: 74-81.
- 3 Lauer GM, Walker BD. Hepatitis C virus infection. *N Engl J Med*. 2001; 345: 41-52.
- 4 Smith DB, Bukh J, Kuiken C, Muerhoff AS, Rice CM, Stapleton JT, Simmonds P. Expanded classification of hepatitis C Virus into 7 genotypes and 67 Subtypes: updated criteria and assignment web resource. *Hepatology*. 2014; 59:318-27.
- 5 Simmonds P, Bukh J, Combet C, Deleage G, Enomoto N, Feinstone S, Halfon P, et al. Consensus Proposals for a Unified System of Nomenclature of Hepatitis C Virus Genotypes. *Hepatology*. 2005; 42: 962-973.
- 6 Pawlotsky JM. Mechanisms of antiviral treatment efficacy and failure in chronic hepatitis C. Review. *Antivir Res*. 2003; 59: 1-11.
- 7 Pujol FH, Devesa M. Genotypic variability of hepatitis viruses associated with chronic infection and the development of hepatocellular carcinoma. *J Clin Gastroenterol*. 2005; 39: 611-618.
- 8 Mira JA, Rivero A, de Los Santos-Gil I, López-Cortés LF, Girón-González JA, Márquez M, Merino D, et al. Hepatitis C virus genotype 4 responds better to pegylated interferon with ribavirin than genotype 1 in HIV-infected patients. *AIDS*. 2012; 26: 1721-1724.
- 9 Holland J, Spindler K, Horodyski F, Grabau E, Nichol S, VandePol S. Rapid evolution of RNA genomes. *Science*. 1982; 215: 1577-1585.
- 10 Belshaw R, Sanjuán R, Pybus OG. Viral mutation and substitution: units and levels. *Curr Opin Virol*. 2011; 1: 430-435
- 11 Weiner AJ, Brauer MJ, Rosenblatt J, Richman KH, Tung J, Crawford K, Bonino F, et al. Variable and hypervariable domains are found in the regions of HCV

corresponding to the flavivirus envelope and NS1 proteins and the pestivirus envelope glycoproteins. *Virology*. 1991; 180: 842-848.

- 12 Martell M, Esteban JI, Quer J, Genescà J, Weiner A, Esteban R, Guardia J, et al. Hepatitis C virus (HCV) circulates as a population of different but closely related genomes: quasispecies nature of HCV genome distribution. *J Virol*. 1992; 66: 3225-3229.
- 13 Canobio S, Guilbert CM, Troesch M, Samson J, Lemay M, Pelletier VA, Bernard-Bonnin AC, et al. Differing patterns of liver disease progression and hepatitis C virus (HCV) quasispecies evolution in children vertically coinfecting with HCV and human immunodeficiency virus type 1. *J Clin Microbiol*. 2004; 42:4365-4369.
- 14 Veillon P, Payan C, Le Guillou-Guillemette H, Gaudy C, Lunel F. Mutation analysis of ISDR and V3 domains of Hepatitis C Virus NS5A region before interferon therapy with or without ribavirin. *Pathologie Biologie*. 2004; 52: 505-510
- 15 Pellerin M, Lopez-Aguirre Y, Penin F, Dhumeaux D, Pawlotsky JM. Hepatitis C Virus Quasispecies Variability Modulates Nonstructural Protein 5A Transcriptional Activation, Pointing to Cellular Compartmentalization of Virus-Host Interactions. *J Virol*. 2004; 78: 4617-4617.
- 16 Fan X, Mao Q, Zhou D, Lu Y, Xing J, Xu Y, Ray SC, et al. High diversity of hepatitis C viral quasispecies is associated with early virological response in patients undergoing antiviral therapy. *Hepatology*. 2009; 50:1765-1772.
- 17 Ramachandran S, Campo DS, Dimitrova ZE, Xia GL, Purdy MA, Khudyakov YE. Temporal variations in the hepatitis C virus intrahost population during chronic infection. *J Virol* 2011; 85: 6369-6380.
- 18 Alfonso V, Flichman DM, Sookoian S, Mbayed VA, Campos RH. Evolutionary study of HVR1 of E2 in chronic hepatitis C virus infection. *J Gen Virol*. 2004; 85: 39-46.
- 19 Uebelhoer L, Han JH, Callendret B, Mateu G, Shoukry NH, Hanson HL, Rice CM, et al. Stable cytotoxic T cell escape mutation in hepatitis C virus is linked to maintenance of viral fitness. *PLoS Pathog*. 2008; 4: e1000143.

- 20** Gray RR, Parker J, Lemey P, Salemi M, Katzourakis A, Pybus OG. The mode and tempo of hepatitis C virus evolution within and among hosts. *BMC Evol Biol* 2011; 11; 131.
- 21** Farci P, Shimoda A, Coiana A, Diaz G, Peddis G, Melpolder JC, Strazzera A, et al. The outcome of acute hepatitis C predicted by the evolution of the viral quasispecies. *Science*. 2000; 288: 339-44.
- 22** Sheridan I, Pybus OG, Holmes EC, Klenerman P. High-resolution phylogenetic analysis of hepatitis C virus adaptation and its relationship to disease progression. *J Virol*. 2004; 78: 3447-54.
- 23** Chayama K, Hayes CN. Hepatitis C virus: How genetic variability affects pathobiology of disease. *J Gastroenterol Hepatol*. 2011; 26 Suppl 1: 83-95.
- 24** Alter JM. Epidemiology of hepatitis C virus infection. *W J Gastroenterol*. 2007; 13: 2436-2441.
- 25** Magiorkinis G, Sypsa V, Magiorkinis E, Paraskevis D, Katsoulidou A, Belshaw R, Fraser C, et al. Integrating phylodynamics and epidemiology to estimate transmission diversity in viral epidemics. *PLoS Comput Biol*. 2013; 9: e1002876
- 26** Grenfell BT, Pybus OG, Gog JR, Wood JL, Daly JM, Mumford JA, Holmes EC. Unifying the epidemiological and evolutionary dynamics of pathogens. *Science*. 2004; 303: 327-32.
- 27** Thomas DL, Thio CL, Martin MP, Qi Y, Ge D, O’Huigin C, Kidd J, et al. Genetic variation in IL28B and spontaneous clearance of hepatitis C virus. *Nature* 2009; 461:798-801.
- 28** Nattermann J, Timm J, Nischalke HD, Olbrich A, Michalk M, Tillmann HL, Berg T, et al. The predictive value of IL28B gene polymorphism for spontaneous clearance in a single source outbreak cohort is limited in patients carrying the CCR5Δ32 mutation. *J Hepatol*. 2011; 55:1201–1206.
- 29** Ruiz-Extremera A, Muñoz-Gámez JA, Salmerón-Ruiz MA, de Rueda PM, Quiles-Pérez R, Gila-Medina A, Casado J, et al. Genetic variation in interleukin 28B with

respect to vertical transmission of hepatitis C virus and spontaneous clearance in HCV-infected children. *Hepatology*. 2011; 53:1830-8.

- 30** Wolinsky S, Wike C, Korber B, Hutto C, Parks WP, Rosenblum LL, Kunstman KJ, et al. Selective transmission of HIV-1 variants from mothers to infants. *Science*. 1992; 255: 1134-7.
- 31** Derdeyn C, Decker J, Bibollet-Ruche F, Mokili JL, Muldoon M, Denham SA, Heil ML, et al. Envelope-constrained neutralization-sensitive HIV-1 after heterosexual transmission. *Science*. 2004; 303: 2019-22.
- 32** Edwards C, Holmes EC, Wilson D, Viscidi RP, Abrams EJ, Phillips RE, Drummond AJ. Population genetic estimation of the loss of genetic diversity during horizontal transmission of HIV-1. *BMC Evol Biol*. 2006; 6: 28.
- 33** Rambaut A, Posada D, Crandall K, Holmes E. The causes and consequences of HIV evolution. *Nat Rev Genet*. 2004; 5: 52-61.
- 34** Sawada L, Pinheiro AC, Locks D, Pimenta Ado S, Rezende PR, Crespo DM, Crescente JÂ, et al. Distribution of hepatitis C virus genotypes among different exposure categories in the State of Pará, Brazilian Amazon. *Rev Soc Bras Med Trop*. 2011; 44: 8-12.
- 35** Jamalidoust M, Namayandeh M, Asaei S, Aliabadi N, Ziyaeyan M. Determining hepatitis C virus genotype distribution among high-risk groups in Iran using real-time PCR. *World J Gastroenterol*. 2014; 20: 5897-902.
- 36** Esteban JI, Sauleda S, Quer J. The changing epidemiology of hepatitis C virus infection in Europe. *J Hepatol* 2008; 48:148-162.
- 37** Morice Y, Roulot D, Grando V, Stirnemann J, Gault E, Jeantils V, Bentata M, et al. Phylogenetic analyses confirm the high prevalence of hepatitis C virus (HCV) type 4 in the Seine-Saint-Denis district (France) and indicate seven different HCV-4 subtypes linked to two different epidemiological patterns. *J Gen Virol*. 2001; 82: 1001-1012.

- 38 Van Asten L, Verhaest I, Lamzira S, Hernandez-Aguado I, Zangerle R, Rezza G, Broers B, et al. Spread of hepatitis C virus among European injection drug users infected with HIV: A phylogenetic analysis. *J Infect Dis.* 2004; 189: 292-302.
- 39 Cifuentes C, Mira JA, Vargas J, Neukam K, Escassi C, García-Rey S, Gilabert I, et al. Prevalence of hepatitis virus infection markers in HIV-infected patients in Southern Spain. *Enferm Infecc Microbiol Clin.* 2012; 30: 452-457.
- 40 Carrat F, Bani-Sadr F, Pol S, Rosenthal E, Lunel-Fabiani F, Benzekri A, Morand P, et al. Pegylated interferon alfa-2b, plus ribavirin, for chronic hepatitis C in HIV-infected patients. A randomized controlled trial. *JAMA.* 2004; 292:2839–2848.
- 41 Torriani FJ, Rodriguez-Torres M, Rockstroh JK, Lissen E, González-García J, Lazzarin A, Carosi G, et al. Peginterferon alfa-2a plus ribavirin for chronic hepatitis C virus infection in HIV-infected patients. *N Engl J Med.* 2004; 351:438–450.
- 42 Núñez M, Miralles C, Berdun MA, Losada E, Aguirrebengoa K, Ocampo A, Arazo P, et al. Role of weight-based ribavirin dosing and extended duration of therapy in chronic hepatitis C in HIV-infected patients: The PRESCO trial. *AIDS Res Hum Retroviruses.* 2007; 23: 972-982.
- 43 Pineda JA, Mira JA, de los Santos-Gil I, Valera-Bestard B, Rivero A, Merino D, Girón-González JA, et al. Influence of concomitant antiretroviral therapy on the rate of sustained virological response to pegylated interferon plus ribavirin in hepatitis C virus/HIV-coinfected patients. *J Antimicrob Chemother.* 2007; 60: 1347-1354.
- 44 Pawlotsky JM. Pathophysiology of hepatitis C virus infection and related liver disease. *Trends Microbiol.* 2004; 12: 96-102.
- 45 Gale M Jr, Foy EM. Evasion of intracellular host defence by hepatitis C virus. *Nature.* 2005; 436: 939-945.
- 46 Rauch A, James I, Pfafferoth K, Nolan D, Klenerman P, Cheng W, Mollison L, et al. Divergent adaptation of hepatitis C virus genotypes 1 and 3 to human leukocyte antigen-restricted immune pressure. *Hepatology.* 2009; 50: 1017-29.

- 47** Posthouwer D, Fischer K, van Erpecum KJ, Mauser-Bunschoten EP. The natural history of childhood-acquired hepatitis C infection in patients with inherited bleeding disorders. *Transfusion* 2006; 46: 1360-6.
- 48** Thomas DL, Thio CL, Martin MP, Qi Y, Ge D, O'Huigin C, Kidd J, et al. Genetic variation in IL28B and spontaneous clearance of hepatitis C virus. *Nature*. 2009; 8; 461: 798-801.
- 49** Di Lello FA, Caruz A, Rallon NI, Rivero-Juarez A, Neukam K, Barreiro P, Camacho A, et al. Effects of the genetic pattern defined by low-density lipoprotein receptor and IL28B genotypes on the outcome of hepatitis C virus infection. *Eur J Clin Microbiol Infect Dis*. 2013; 32: 1427-35.
- 50** Riva A, Laird M, Casrouge A, Ambrozaitis A, Williams R, Naoumov NV, Albert ML, Chokshi S. Truncated CXCL10 is associated with failure to achieve spontaneous clearance of acute hepatitis C infection. *Hepatology*. 2014; 60: 487-96.
- 51** Fitzmaurice K, Hurst J, Dring M, Rauch A, McLaren PJ, Günthard HF, Gardiner C, et al. Additive effects of HLA alleles and innate immune genes determine viral outcome in HCV infection. *Gut*. 2014; [Epub ahead of print].
- 52** McKiernan SM, Hagan R, Curry M, McDonald GS, Kelly A, Nolan N, Walsh A, et al. Distinct MHC class I and II alleles are associated with hepatitis C viral clearance, originating from a single source. *Hepatology*. 2004; 40:108–14.
- 53** Kuniholm MH, Anastos K, Kovacs A, Gao X, Marti D, Sette A, Greenblatt RM, et al. Relation of HLA class I and II supertypes with spontaneous clearance of hepatitis C virus. *Genes Immun*. 2013; 14: 330-5
- 54** Bukh J, Miller RH, Purcell RH. Genetic heterogeneity of hepatitis C virus: quasispecies and genotypes. *Semin Liver Dis*. 1995; 15, 41-63.
- 55** Ray SC, Wang YM, Laeyendecker O, Ticehurst JR, Villano SA, Thomas DL. Acute hepatitis C virus structural gene sequences as predictors of persistent viremia: hypervariable region 1 as a decoy. *J Virol*. 1999; 73:2938-2946.

- 56** Kuntzen T, Timm J, Berical A, Lennon N, Berlin AM, Young SK, Lee B, et al. Naturally occurring dominant resistance mutations to hepatitis C virus protease and polymerase inhibitors in treatment-naive patients. *Hepatology*. 2008; 48:1769-1778.
- 57** Rong L, Dahari H, Ribeiro RM, Perelson AS. Rapid emergence of protease inhibitor resistance in hepatitis C virus. *Sci Transl Med*. 2010; 2: 30-32.
- 58** Hiraga N, Imamura M, Abe H, Hayes CN, Kono T, Onishi M, Tsuge M, et al. Rapid Emergence of Telaprevir Resistant Hepatitis C Virus Strain From Wild Type Clone in Vivo. *Hepatology*. 2011; 54: 781-788.
- 59** Schneider MD, Sarrazin C. Antiviral therapy of hepatitis C in 2014: do we need resistance testing? *Antiviral Res*. 2014; 105:64-71.
- 60** Neumann AU, Lam NP, Dahari H, Gretch DR, Wiley TE, Layden TJ, Perelson AS. Hepatitis C viral dynamics in vivo and the antiviral efficacy of interferon alpha therapy. *Science*. 1998; 282:103-107.
- 61** Domingo E, Sheldon J, Perales C. Viral quasispecies evolution. *Microbiol Mol Biol Rev*. 2012; 76: 159-216.
- 62** Smith JA, Aberle JH, Fleming VM, Ferenci P, Thomson EC, Karayiannis P, McLean AR, et al. Dynamic coinfection with multiple viral subtypes in acute hepatitis C. *J Infect Dis*. 2010; 202: 1770-1779.
- 63** Alfonso V, Mbayed VA, Sookoian S, Campos RH. Intra-host evolutionary dynamics of hepatitis C virus E2 in treated patients. *J Gen Virol*. 2005; 86: 2781-2786.
- 64** Li H, McMahon BJ, McArdle S, Bruden D, Sullivan DG, Shelton D, Deubner H, et al. Hepatitis C virus envelope glycoprotein co-evolutionary dynamics during chronic hepatitis C. *Virology*. 2008; 375: 580-591.
- 65** Gray RR, Salemi M, Klenerman P, Pybus OG. A new evolutionary model for hepatitis C virus chronic infection. *PLoS Pathog*. 2012; 8: e1002656.
- 66** Zampino R, Ingrosso D, Durante-Mangoni E, Capasso R, Tripodi MF, Restivo L, Zappia V, et al. Microsomal triglyceride transfer protein (MTP)-493G/T gene

- polymorphism contributes to fat liver accumulation in HCV genotype 3 infected patients. *J Viral Hepat.* 2008; 15: 740–6.
- 67** Feld JJ, Hoofnagle JH. Mechanism of action of interferon and ribavirin in treatment of hepatitis C. *Nature.* 2005; 436: 967-72.
- 68** Jacobson I, Dore GJ, Foster GR, Fried MW, Radu M, Rafalskiy VV, Moroz L, et al. Simeprevir (TMC435) with peginterferon/ribavirin for chronic HCV genotype 1 infection in treatment-naive patients: results from QUEST-1, a phase III trial. *J Hepatol.* 2013; 58 (Suppl 1): S574.
- 69** Chambers TJ, Fan X, Droll DA, Hembrador E, Slater T, Nickells MW, Dustin LB, et al. Quasispecies heterogeneity within the E1/E2 region as a pretreatment variable during pegylated interferon therapy of chronic hepatitis C virus infection. *J Virol* 2005; 79: 3071-3083.
- 70** Morishima C, Polyak SJ, Ray R, Doherty MC, Di Bisceglie AM, Malet PF, Bonkovsky HL, et al. Hepatitis C virus-specific immune responses and quasi-species variability at baseline are associated with nonresponse to antiviral therapy during advanced hepatitis C. *J Infect Dis.* 2006; 193: 931-940.
- 71** Wohnsland A, Hofmann WP, Sarrazin C. Viral determinants of resistance to treatment in patients with hepatitis C. *Clin Microbiol Rev.* 2007; 20: 23-38.
- 72** Verbinnen T, Jacobs T, Vijgen L, Ceulemans H, Neyts J, Fanning G, Lenz O. Replication capacity of minority variants in viral populations can affect the assessment of resistance in HCV chimeric replicon phenotyping assays. *J Antimicrob Chemother.* 2012; 67: 2327-37.
- 73** Bartels DJ, Sullivan JC, Zhang EZ, Tigges AM, Dorrian JL, De Meyer S, Takemoto D, et al. Hepatitis C virus variants with decreased sensitivity to direct-acting antivirals (DAAs) were rarely observed in DAA-naive patients prior to treatment. *J Virol.* 2013; 87: 1544-53.



- 74** Adiwijaya, BS, Herrmann E, Hare B, Kieffer T, Lin C, Kwong AD, Garg V, et al. 2010. A multi-variant, viral dynamic model of genotype 1 HCV to assess the in vivo evolution of protease-inhibitor resistant variants. *PLoS Comput. Biol.* 6: e1000745.
- 75** Middleton TY, He T, Pilot-Matias R, Tripathi BH, Lim A, Roth CM, Chen G, et al. A replicon-based shuttle vector system for assessing the phenotype of HCV NS5B polymerase genes isolated from patient populations. *J Virol Methods.* 2007; 145: 137-145.
- 76** Qi X, Bae A, Liu S, Yang H, Sun SC, Harris J, Delaney W, et al. Development of a replicon-based phenotypic assay for assessing the drug susceptibilities of HCV NS3 protease genes from clinical isolates. *Antiviral Res.* 2009; 81: 166-173.
- 77** Karino Y, Toyota J, Ikeda K, Suzuki F, Chayama K, Kawakami Y, Ishikawa H, et al. Characterization of virologic escape in hepatitis C virus genotype 1b patients treated with the direct-acting antivirals daclatasvir and asunaprevir. *J Hepatol* 2013; 58, 646-654.

## **ACKNOWLEDGMENT**

We thank Victoria Eusevi and Paula S. Perez for enhancing the readability of this paper.

## FIGURE LEGENDS

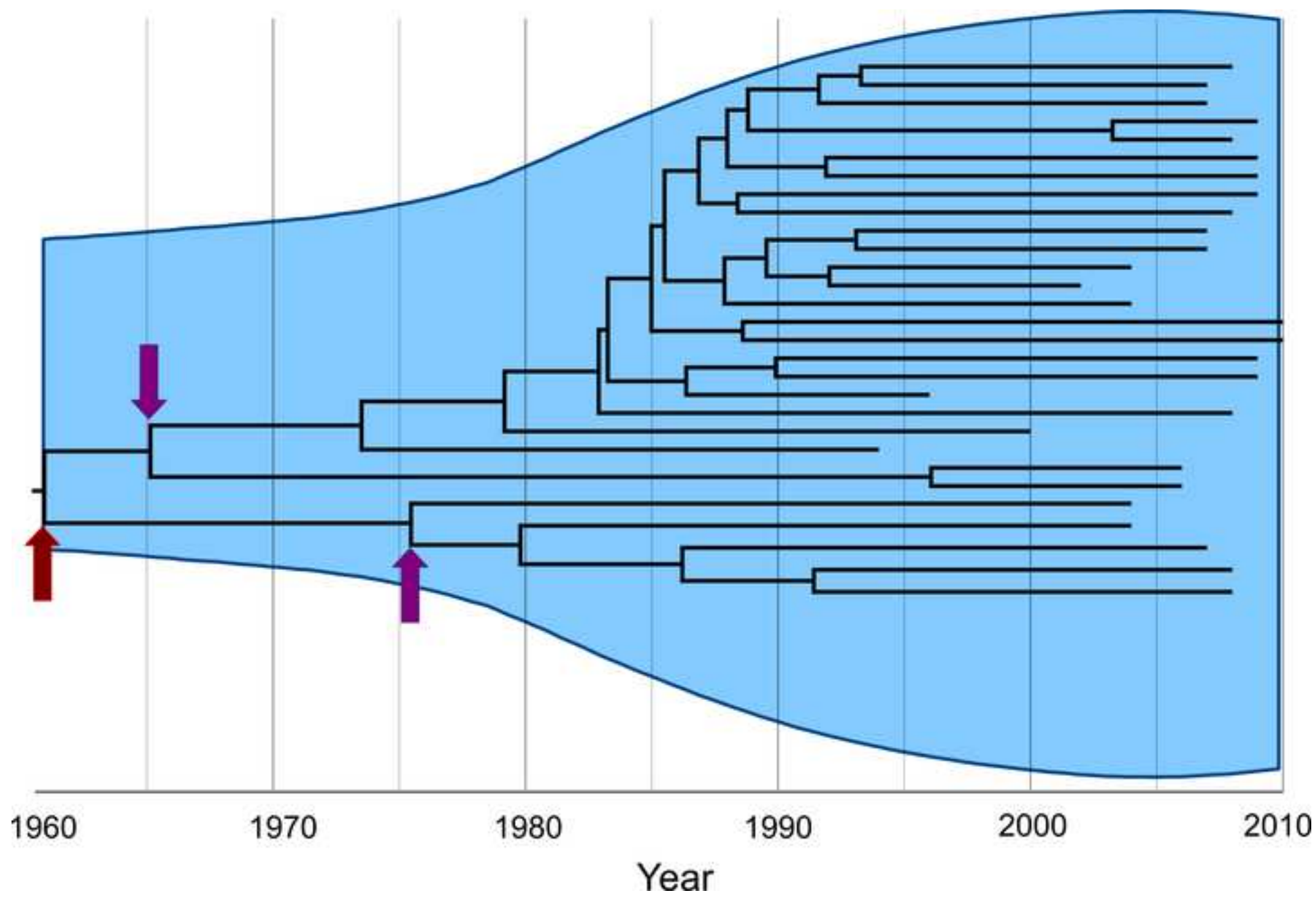
### Figure 1

Interpatient evolution of HCV in a country. Maximum Clade Credibility Tree constructed by Bayesian coalescent methodology from direct sequences of the first half of the E2 region in plasma samples from HCV genotype 1a isolations in Argentina. The tree is presented in time scale (calendar years). The overall process is depicted by the diversification of the current lineages from the 60's to the 80's independently of the actual time of sampling. The arrows indicate possible bottleneck effects. The dark red one indicates the possible introduction of HCV in the community, whereas the magenta ones may indicate the acquisition of the virus by different routes of transmission. Virtually, every transmission event is thought to be a bottleneck effect for virus diversity. The light blue shaded area represents the viral genetic diversity trough the time measured by the Bayesian Skyline methodology [65].

### Figure 2

Intrapatient evolution of HCV in an 8-year follow up. Maximum Clade Credibility Tree constructed by Bayesian coalescent methodology from cloned sequences of the first half of the E2 region in serially obtained plasma samples from a single patient. The tree is presented in time scale (years before present). Each symbol (star, circle, diamond, hexagon, triangle and square) represents different viral lineages. The colors indicate, as the axis position does, the time of the sampling. The vertical dark red dotted lines represent bottleneck events where one of the lineages (shapes) got extinct. The overall process is depicted by the modification or extinction of existing lineages (quasispecies shift). The light blue shaded area represents the viral genetic diversity trough the time measured by the Bayesian Skyline methodology [65].

Figure



Figure

