

## RESEARCH ARTICLE

## Open Access

# Glibenclamide inhibits cell growth by inducing G0/G1 arrest in the human breast cancer cell line MDA-MB-231

Mariel Núñez<sup>1</sup>, Vanina Medina<sup>1</sup>, Graciela Cricco<sup>1</sup>, Máximo Croci<sup>2</sup>, Claudia Cocca<sup>1</sup>, Elena Rivera<sup>1</sup>, Rosa Bergoc<sup>1,3\*</sup> and Gabriela Martín<sup>1</sup>

## Abstract

**Background:** Glibenclamide (Gli) binds to the sulphonylurea receptor (SUR) that is a regulatory subunit of ATP-sensitive potassium channels ( $K_{ATP}$  channels). Binding of Gli to SUR produces the closure of  $K_{ATP}$  channels and the inhibition of their activity. This drug is widely used for treatment of type 2-diabetes and it has been signaled as antiproliferative in several tumor cell lines. In previous experiments we demonstrated the antitumoral effect of Gli in mammary tumors induced in rats. The aim of the present work was to investigate the effect of Gli on MDA-MB-231 breast cancer cell proliferation and to examine the possible pathways involved in this action.

**Results:** The mRNA expression of the different subunits that compose the  $K_{ATP}$  channels was evaluated in MDA-MB-231 cells by reverse transcriptase-polymerase chain reaction. Results showed the expression of mRNA for both pore-forming isoforms Kir6.1 and Kir6.2 and for the regulatory isoform SUR2B in this cell line. Gli inhibited cell proliferation assessed by a clonogenic method in a dose dependent manner, with an increment in the population doubling time. The  $K_{ATP}$  channel opener minoxidil increased clonogenic proliferation, effect that was counteracted by Gli. When cell cycle analysis was performed by flow cytometry, Gli induced a significant cell-cycle arrest in G0/G1 phase, together with an up-regulation of p27 levels and a diminution in cyclin E expression, both evaluated by immunoblot. However, neither differentiation evaluated by neutral lipid accumulation nor apoptosis assessed by different methodologies were detected. The cytostatic, non toxic effect on cell proliferation was confirmed by removal of the drug.

Combination treatment of Gli with tamoxifen or doxorubicin showed an increment in the antiproliferative effect only for doxorubicin.

**Conclusions:** Our data clearly demonstrated a cytostatic effect of Gli in MDA-MB-231 cells that may be mediated through  $K_{ATP}$  channels, associated to the inhibition of the G1-S phase progression. In addition, an interesting observation about the effect of the combination of Gli with doxorubicin leads to future research for a potential novel role for Gli as an adjuvant in breast cancer treatment

**Keywords:** Glibenclamide, Potassium channels, MDA-MB-231, Cytostatic effect

\* Correspondence: [rmbergoc@gmail.com](mailto:rmbergoc@gmail.com)

<sup>1</sup>Radioisotopes Laboratory, School of Pharmacy and Biochemistry, University of Buenos Aires, Buenos Aires, Argentina

<sup>3</sup>Institute of Health Sciences Barceló, Buenos Aires, Argentina

Full list of author information is available at the end of the article

## Background

Sulphonylureas are used to increase insulin secretion in patient with type 2-diabetes due to their direct action on pancreatic  $\beta$  cells. These drugs bind to the  $\beta$  cell sulphonylurea receptor (SUR) that is a regulatory subunit of ATP-sensitive potassium channels ( $K_{ATP}$  channels) [1-3].  $K_{ATP}$  channels regulate the transport of potassium ions through cell membranes. A diverse group of compounds can bind to  $K_{ATP}$  channels causing them to open or close. The opening of potassium channels in the cell membrane produces a hyperpolarization of membrane potential. These channels are hetero-octameric complexes that consist of two rings: an inner ring of four inwardly rectifying  $K^+$  channels (Kir6.X) that forms the pore through which potassium ions pass, and an outer ring that comprises four SUR subunits. Two isoforms have been described for Kir6.X (Kir6.1 and Kir6.2) and also for SUR (SUR1 and SUR2; SUR2 also has two splice variants, SUR2A and SUR2B) [4]. In pancreatic  $\beta$  cells binding of sulphonylureas to SURs produce the closure of  $K_{ATP}$  channels reducing cellular potassium efflux thus favoring membrane depolarization, the induction of  $Ca^{2+}$  influx, and insulin secretion [1-3].

Glibenclamide (Gli), a diarylsulphonylurea that blocks specifically  $K_{ATP}$  channels, is widely employed in the treatment of diabetic patients [5], but various reports also described its antiproliferative effect in different neoplastic cell lines [6,7]. Additionally, the inhibition of other classes of potassium channels also leads to a decrease of proliferation in normal and cancer cells [8,9].

Breast cancer is the neoplastic disease most frequently observed in women all over the world [10-12]. A high proportion of mammary tumors are positive for estrogen receptors  $\alpha$  (ER $\alpha$ ) and consequently antihormonal therapy is indicated. The selective estrogen receptor modulator tamoxifen continues to be the drug regularly used in patients harboring this kind of tumors due to its efficacy and low toxicity [13]. However, approximately 30% of ER $\alpha$  (+) tumors do not respond to tamoxifen or develop resistance in the course of the treatment. In addition, it is known that approximately 30% of tumors do not express ER $\alpha$  [14]. Although a large number of drugs have been developed for the treatment of ER $\alpha$  (-) tumors, most of them give rise to important toxic effects. In order to attain better therapeutic effectiveness, combination cytotoxic treatments for aggressive cancers have been employed in clinics. The simultaneous use of drugs with different molecular targets can delay the emergence of chemoresistance whereas when drugs are directed to the same cellular pathway they could work synergically for higher efficacy and selectivity. However, combination therapy may also increase toxicity [15]. Doxorubicin is considered a highly effective agent in the treatment of aggressive breast cancer patients sometimes combined

with cyclophosphamide, taxanes and/or 5-fluorouracil; however, resistance to doxorubicin is common [16,17]. The search for effective drugs with low side effects is still a challenge to researchers.

MDA-MB-231 cell line derived from a human breast carcinoma that do not express ER $\alpha$ , is often used as an experimental non hormone-dependent tumor model [18,19]. The objective of the present work was to investigate the effect of Gli on MDA-MB-231 cells proliferation and to examine the possible pathways involved in this action.

## Material and methods

### Materials

MBA-MB-231 cells were obtained from American Type Culture Collection (ATCC). Gli was kindly provided by Investi-Farma SA, Buenos Aires, Argentina. Tamoxifen (Tam) was a gift from Gador Laboratories SA, Buenos Aires, Argentina. RPMI 1640 medium and fetal bovine serum (FBS) were purchased from GIBCO, Invitrogen, CA, USA. Ribonuclease, propidium iodine, 3,3'-dihexyloxycarbocyanine iodide (DiOC6), saponine, FITC-labeled anti-rabbit, 5-bromo-2'-deoxyuridine (BrdU), mouse anti-BrdU monoclonal antibody, FITC-conjugated anti-mouse IgG, 4',6-Diamidino-2-phenylindole, dilactate (DAPI), 5-bromo-4-chloro-3-indolyl- $\beta$ -d-galactoside (X-gal), mouse anti- $\beta$ -actin polyclonal antibody, p27<sup>Kip1</sup> monoclonal antibody and Nile-red stain were purchased from Sigma, St Louis, MO, USA. Apoptag<sup>®</sup> PLUS Peroxidase In Situ Detection Kit S701 was from Chemicon International, CA, USA. Rabbit polyclonal antibodies against human Bax, Bcl-2 and Bcl-x<sub>L/S</sub> were from Santa Cruz Biotechnologies, Santa Cruz, CA, USA. Mouse anti-cyclin B1 monoclonal antibodies, mouse anti-cyclin E monoclonal antibodies, and rabbit anti-cyclin D1 monoclonal antibodies were from Cell Signaling Technology, Inc., Danvers, MA, USA. Annexin V-FITC was from Biosciences, USA. Chemiluminescence system (ECL) was from Amersham Biosciences Argentina SS (Argentina). Nitrocellulose membranes were from Santa Cruz Biotechnologies, Santa Cruz, CA, USA. Multiwells were from TPP, Switzerland. All other reagents were of analytical grade.

## Methods

### Reverse transcriptase polymerase chain reaction (RT-PCR) analysis

Total cellular RNA was extracted using Trizol<sup>®</sup> according to the instructions of the manufacturer (GIBCO, Life Technologies, USA). Total RNA (2  $\mu$ g) was added to the reverse transcription (RT) reaction mixture (20  $\mu$ l) in the presence of oligo-dT primers and samples were incubated at 37°C for 60 minutes. The quality of each individual's cDNA was confirmed by PCR with primers for  $\beta$ -actin producing bands of the expected size (data not shown). The primers used were employed previously

by other workers for Kir6.1, Kir6.2, SUR1 [4], SUR2A and SUR2B [20]. PCR conditions were as follows: Kir6.1 forward (5'-CATCTTTACCATGTCCTTCC-3') and reverse (5'-GTGAGCCTGAGCTGTTTTCA-3'), 336 bp; Kir6.2 forward (5'-GCTTTGTGTCCAAGAAAGG1-3') and reverse (5'-CCAAAGCCAATAGTCACTTG-3'), 301 bp; 5 min 95°C, 35 cycles of 95°C for 20 s, 52°C for 45 s, and 72°C for 1 min. SUR1 forward (5'-CGATGC CATCATCACAGAAG-3') and reverse (5'-CTGAG CAGCTTCTCTGGCTT-3'), 291 bp; SUR2A forward (5'-ATGCGGTTGTCAGTGAAGG-3') and reverse (5'-AATAGAAGAGACACGGTGAGC-3'), 215 bp; SUR2B forward (5'-GATGCGGTTGTCAGTGAAGG-3') and reverse (5'-TCATCACATAACCAGGTCTGC-3'), 244 bp; 5 min 95°C, 35 cycles of 95°C for 1 min, 55°C for 1 min, and 72°C for 2 min. Reactions were terminated by final elongation step of 7 min at 72°C (Gene Amp PCR System 2400, PerkinElmer, MA, USA). Negative controls were performed with water instead of cDNA. PCR products were subjected to gel electrophoresis and detected by gel documentation system LumiBis DNR (Bio-Imaging Systems, Jerusalem, Israel).

#### Cell culture

MBA-MB-231 cells were cultured in RPMI 1640 medium supplemented with 10% FBS, 0.3 g/l L-glutamine and 40 mg/l gentamicin and in the presence of Gli, Tam or vehicle. Cells were maintained at 37°C in a humidified atmosphere containing 5% CO<sub>2</sub>.

#### Cell proliferation assay

For clonogenic assay, cells were seeded in 6-well plates (1.5×10<sup>3</sup> cells/well) and incubated in the presence or absence of drugs for 10 days. Cells were treated with 10 to 50 μM Gli, 0.005 to 5 μM minoxidil; 0.1 to 5 μM tamoxifen; 0.01 to 0.1 nM doxorubicin or with the concentration of Gli that inhibited the proliferation to the 50% (IC<sub>50</sub>) plus different doses of minoxidil, tamoxifen or doxorubicin to assess the combined action of both drugs. Cells were then fixed with 10% formaldehyde in phosphate-buffered saline, PBS, stained with 1% toluidine blue in 70% ethanol. The clonogenic proliferation was evaluated by counting the colonies with 50 cells or more. The results are expressed as a percentage of control values.

#### Determination of doubling time

For doubling time determination cells were seeded in 6-well plates (4×10<sup>4</sup> cells/well), starved for 24 h and then incubated with IC<sub>50</sub> Gli (25 μM) or vehicle for up to 96 h. Cells were trypsinized at 0, 1, 2, 3 and 4 days and counted using a hemocytometer. All experiments were performed in the logarithmic phase of cell growth. Triplicate plates were analyzed for each

treatment and each time. The following formula was used to calculate the doubling time:  $N_t = N_0 \times e^{k \times t}$ , where  $N_0$  was the initial number of cells that increased exponentially with a rate constant,  $k$ . The doubling time ( $T$ ) was calculated as:  $T = \ln 2/k$ . The GraphPad Prism 5.0 software (GraphPad Software Inc., Philadelphia, U.S.A.) was employed.

#### Cell cycle analysis by flow cytometry

Cells were cultured for 24 h without FBS. Synchronized cells were then treated with IC<sub>50</sub> Gli (25 μM) or vehicle immediately after release from the block and harvested for up to 72 h. Then cells were collected by trypsinization, fixed with ice cold methanol, centrifuged and resuspended in 0.5 ml of propidium iodide (PI) staining solution (50 μg/ml PI in PBS containing 0.2 mg/ml of DNase-free RNase A). After incubation for 30 min at 37°C, samples were evaluated by flow cytometry (Becton Dickinson, USA). Cell cycle distribution was analyzed using Cylchred 1.0.2 software (Cardiff University, UK).

#### Quantification of DNA synthesis

The quantification of cellular DNA synthesis was performed on cells by the addition of 30 μM BrdU for 2 h. Cells grown on sterile slides were washed with PBS and fixed with 10% formaldehyde in PBS. To denature the DNA into single-stranded molecules, cells were incubated with 3 N HCl for 30 min at room temperature. Then cells were washed in 1 ml of 0.1 M Na<sub>2</sub>B<sub>4</sub>O<sub>7</sub>, pH 8.5 to neutralize the acid and were then incubated overnight at 4°C with mouse anti-BrdU monoclonal antibody (1:50). Then, cells were incubated for 2 h at 37°C with FITC-conjugated anti-mouse IgG (1:100). After washed with PBS, cells were stained with DAPI (1:8000). Fluorescence was further visualized by fluorescence microscope. At least 1000 cells were scored for each determination.

#### Apoptosis

Apoptotic MDA-MB-231 cells were detected after treatment with Gli or vehicle for 72 h. Phosphatidylserine exposure on the surface of apoptotic cells was detected by flow cytometry after staining with Annexin V-FITC and PI (50 μg/ml). Data were analyzed using WinMDI 2.8 software (Scripps Institute, CA, USA).

#### Mitochondrial transmembrane potential

Variations of the mitochondrial transmembrane potential of the cells,  $\Delta\Psi_m$ , were studied by means of the uptake of DiOC6, a specific fluorochrome that has been widely used in monitoring  $\Delta\Psi_m$ . Cells were plated and treated 24 h after with 25 μM Gli for different incubation periods (24, 48 and 72 hs). The diluted dye at a final concentration of 40 nM in PBS was applied to cells for

15 min at 37°C. Cells were then washed twice with PBS, harvested and then analyzed by flow cytometry (Becton Dickinson, USA). Results were expressed as the percentage of mean fluorescence of respective controls.

#### Determination of cell cycle and apoptosis related proteins

##### Flow cytometry

After treatment with Gli or vehicle for 72 h MDA-MB-231 cells were harvested, fixed with 4% formaldehyde and permeabilized with saponine. To evaluate intracellular protein content, cells were incubated with rabbit anti-Bcl-2 and rabbit anti-Bax antibodies. After washing, cells were incubated for 20 min with FITC-labeled anti-rabbit. The samples were analyzed with a FACScalibur flow cytometer (Becton Dickinson, USA). Data analysis was performed using WinMDI 2.8 software. For each sample 20,000 events were collected. The results are expressed as the percentage of respective control values.

##### Western blot assay

Cells were placed on ice and washed twice with cold PBS. Cells were then scraped into a lysis buffer (100 mM Tris/HCl buffer, pH 8, containing 1% Triton X-100 and protease inhibitors) and incubated for 15 min on ice. After centrifugation at 6000 rpm for 10 min, the supernatants were used for protein determination according to Bradford assay [21]. For Western blot, loading buffer (100 mM Tris/HCl buffer, pH 8, containing 1.7% sodium dodecyl sulfate (SDS), 0.02% bromophenol blue, 1.5% dithiothreitol, and 5% of glycerol) was added to samples and they were boiled for 3 minutes. Equal amounts of proteins (50 µg) were fractionated on SDS-polyacrylamide gels (12%) and transferred electrophoretically onto nitrocellulose membranes. Membranes were blocked and probed overnight with primary mouse anti-cyclin D<sub>1</sub> (1:100), mouse anti-cyclin E (1:500), mouse anti-cyclin B (1:200), mouse anti-p27<sup>Kip1</sup> (1:200), rabbit anti-Bax (1:500), rabbit anti-Bcl-x<sub>L/S</sub> (1:500) and mouse anti-β-actin (1:1000) antibodies. Immunoreactivity was detected by using horseradish peroxidase-conjugated anti-mouse or anti-rabbit IgG, as appropriate, and visualized by enhanced chemiluminescence. Densitometric analyses were performed using the software Image J 1.32 J (NIH, USA).

##### Evaluation of senescence-like phenotype

Senescence-associated β-galactosidase (SA-β-Gal) activity was detected in cells as previously described by Dimri [22] with some modifications. Cells treated with Gli (25 µM) or vehicle for 72 hs were fixed in 3.0% formaldehyde for 5 min, washed in phosphate buffered solution (PBS) and stained in 1 mg/ml X-gal solution at pH 6.0 for 4 hs at 37°C. SA-β-Gal positive cells were stained in blue. To visualize the cell architecture, the slides were counter-stained by haematoxylin and quantified by

optical microscopy. At least 1000 cells were scored for each determination.

##### Lipid accumulation

In order to examine the possible action of Gli in lipid accumulation, a classic terminal differentiation marker in mammary cells, the levels of neutral lipid were measured by flow cytometry using Nile-red staining [23]. Cells treated with Gli or vehicle for 2, 3 or 7 days were fixed and then incubated with Nile-red at a final concentration of 1 µg/ml in PBS for 20 min at room temperature. Cells were then analyzed by flow cytometry (Becton Dickinson, USA).

Data analysis was performed using WinMDI 2.8 software (Scripps Institute, CA, USA). The results were expressed as a percentage of control values.

##### Cytostatic effect of glibenclamide

MDA-MB-231 cells (1x10<sup>4</sup> cells/well) were plated into 6-well plates. After 24 h, cells were treated with 25 µM Gli or vehicle and detached with trypsin 3 or 7 days later. Cells were then counted and seeded in 6-well plates (1.2x10<sup>3</sup> cells/well) in triplicates. After 10 days in culture, colonies were fixed with 10% buffered formalin and stained with 1% toluidine blue in 70% ethanol. The number of colonies was determined and normalized to the number of colonies in controls.

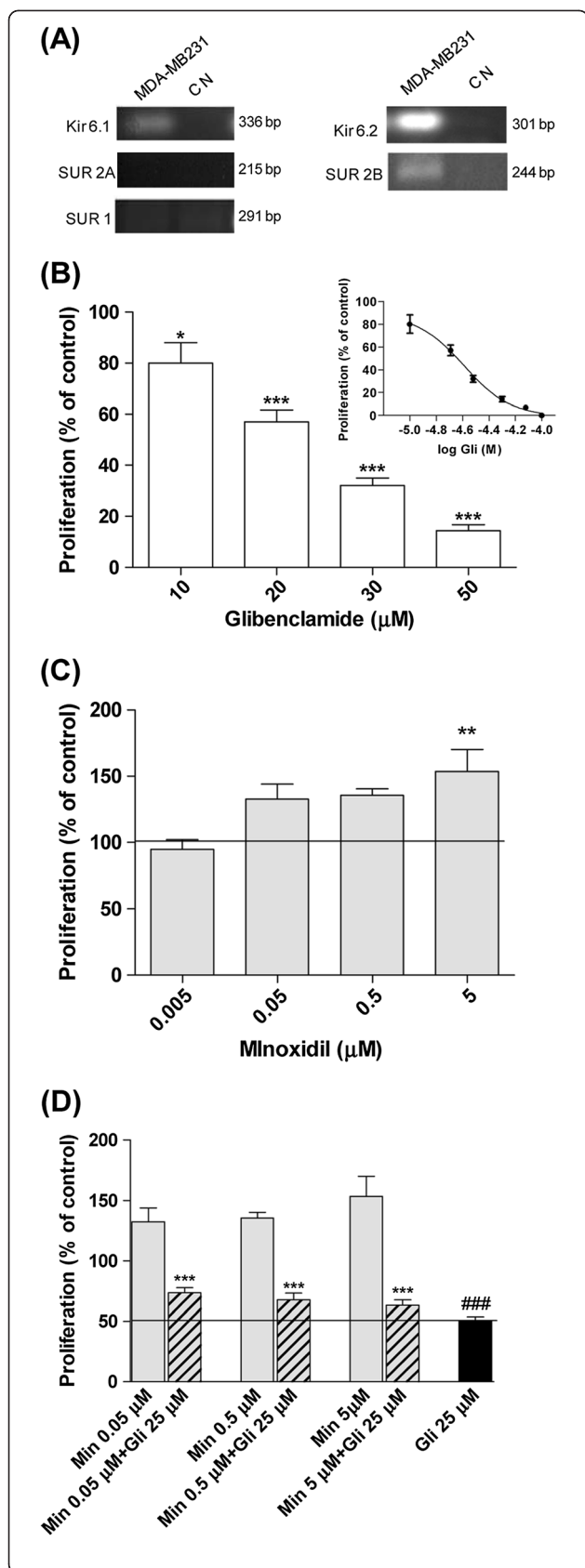
##### Statistical analysis

In all cases the data shown are the means ± SEM of at least three independent experiments. Statistical analysis is indicated in each legend. Data were analyzed using the GraphPad Prism 5.0 (GraphPad Software Inc., Philadelphia, U.S.A.) and P values less than 0.05 were considered statistically significant.

## Results

### Expression of K<sub>ATP</sub> channels in MDA-MB-231 cells

Though many reports describe the presence of different potassium channels in diverse human cancer cell lines, at present there is little evidence about the expression of K<sub>ATP</sub> channels in breast cancer cells. Since Gli is a specific blocker of K<sub>ATP</sub> channels, the expression of mRNA for different subunits (Kir6.1, Kir6.2 and SURs) was examined by RT-PCR in MDA-MB-231 cells. As shown in Figure 1A bands of 336 and 301 bp for Kir6.1 and Kir6.2 respectively were detected after electrophoresis, indicating gene expression of pore components for at least two channel types in this cell line. Furthermore, a predicted band of 244 bp was found indicating the expression of SUR2B gene. The expression of SUR1 and SUR2A genes was not detected (291 bp and 215 bp, respectively). Altogether these results indicate that pore-forming and regulatory subunits are expressed in this



**Figure 1 Effect of Glibenclamide, a specific blocker of the  $K_{ATP}$  channels, on cell growth.** The figure shows the mRNA expression of  $K_{ATP}$  channels components and the effect of Gli and minoxidil (Min) on cell proliferation in MDA-MB-231 cells. Proliferation was evaluated by counting of colonies with 50 cells or more and expressed as percentage of values obtained with vehicle (means  $\pm$  SEM of three experiments on parallel). Panel **A**: mRNA expression of  $K_{ATP}$  channels in MDA-MB-231 cells by RT-PCR analysis. Agarose gel electrophoresis of PCR products showed bands corresponding to: Kir6.1 (336 bp), Kir6.2 (301 bp), SUR2B (312 bp). No bands were detected for SUR2A (215 bp) or SUR1 (291 bp). CN: negative control. Panel **B**: Inhibition of proliferation obtained with different concentrations of Gli (10, 20, 30 or 50  $\mu$ M). Insert shows the dose-response curve used to determine  $IC_{50}$  ( $IC_{50} = 25 \mu$ M). Panel **C**: Increase of proliferation obtained with Min 0.05; 0.5 or 5  $\mu$ M. Panel **D**: Results obtained with  $IC_{50}$  Gli plus different concentration of Min. Panel **B** and **C**: \* $p < 0.05$  vs. control; \*\* $p < 0.01$  vs. control; \*\*\* $p < 0.001$  vs. control, One way ANOVA and Dunnet post test. Panel **D**: \*\*\* $p < 0.01$  vs. Min 0.05  $\mu$ M; vs. Min 0.5  $\mu$ M; vs. Min 5  $\mu$ M. ### $p < 0.001$  vs. Min 0.05  $\mu$ M; vs. Min 0.5  $\mu$ M; vs. Min 5  $\mu$ M. One way ANOVA and Tuckey post test.

cell line. ER $\alpha$  (+) MCF-7 breast cancer cells were also analyzed and Kir6.1, Kir6.2 and SUR1 were found expressed in this cell line (data not shown).

#### Effect of glibenclamide on cell proliferation

The effect of Gli on cell proliferation was tested by means of a clonogenic assay. A significant concentration dependent inhibition on cell growth was observed when Gli was added to cell cultures in concentrations over 10  $\mu$ M; the  $IC_{50}$  value was  $25.6 \pm 3.2 \mu$ M (Figure 1B). The increased doubling time (T value, Table 1) obtained in the presence of 25  $\mu$ M Gli is in concordance with the inhibition of proliferation previously demonstrated using the clonogenic assay.

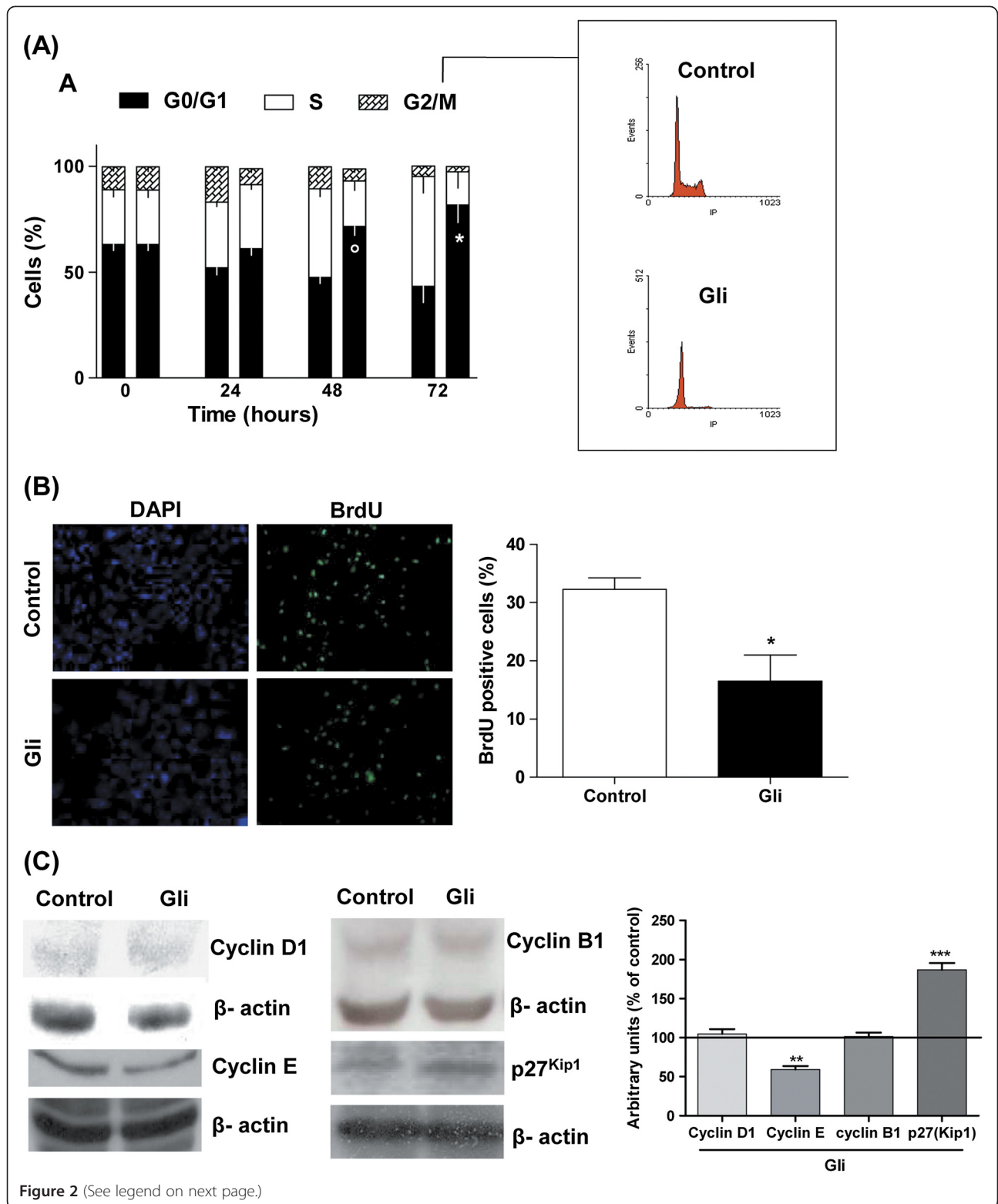
In order to support the hypothesis of  $K_{ATP}$  channels involvement in MDA-MB-231 cell proliferation we used minoxidil, a well known specific opener of these channels. The results showed an increase in cell clonogenic growth for concentrations over 0.05  $\mu$ M, which became significant at 5  $\mu$ M (Figure 1C). Figure 1D shows that the increment in proliferation produced by the channel opener was totally reversed by 25  $\mu$ M Gli.

The analysis of cell cycle phase distribution demonstrated that Gli produces a significant increase in the number of cells in G1 phase at 24, 48 and 72 h post treatment, clearly demonstrating a significant G0/G1 cell cycle arrest (Figure 2A). A consequent decrease in cells

**Table 1 Determination of cell doubling time**

Treatment	Duplication Time (hs)
Control	24.0 $\pm$ 4.3
Gli	34.6 $\pm$ 4.5 *

Gli: 25  $\mu$ M glibenclamide. \*  $p < 0.05$  vs control, t test.



(See figure on previous page.)

**Figure 2 Effect of Glibenclamide on cell cycle progression.** Panel **A**: Synchronized MDA-MB-231 cells were treated with IC<sub>50</sub> Gli (25 μM) or vehicle for 24, 48 or 72 h and the fraction of cells in each phase of cell cycle was evaluated by flow cytometry. Gli treatment clearly arrested cells at G0/G1 phase. Results are expressed as percentage of the value obtained with vehicle (means ± SEM of three experiments on parallel). \*p < 0.01 vs control; \*\*p < 0.001 vs control, t test. Left bars: control; right bars: Gli-treated cells. Panel **B**: A decrease in BrdU incorporation to DNA was observed when cells were treated with 25 μM Gli for 48 h. Results are expressed as the means ± SEM of three experiments on parallel. \*p < 0.05 vs. control, t test. Panel **C**: Expression of G1-S regulatory proteins in MDA-MB-231 cells treated with Gli or vehicle for 72 h was analyzed by Western blot. Gli decreased the level of cyclin E and increased p27<sup>Kip1</sup>. Representative immunoblot images of cyclins D1, B1, E and p27<sup>Kip1</sup> are illustrated. Relative quantification was performed by densitometric analyses. Actin densitometric values were used to standardize for protein loading. Bars represent the mean ± SEM of three independent experiments. \*\*p < 0.01 vs control; \*\*\*p < 0.001 vs control, t test.

in S and G2 phase versus control was also observed. Consistent with these observations, Gli inhibited the active DNA synthesis when it was evaluated by BrdU incorporation (Figure 2B).

The expression of proteins implicated in the control of different phases of the cell cycle was investigated by Western blot analysis. Studies of proteins specifically related with phase G1 of cell cycle demonstrated that 25 μM Gli reduced expression of cyclin E whereas cyclin D1 remained unchanged after 72 h of treatment. Furthermore, p27<sup>Kip1</sup> levels were up-regulated in the same experimental conditions. In addition, the level of cyclin B1 expression, which is involved in the control of G2-M transition, was not modified by Gli treatment.

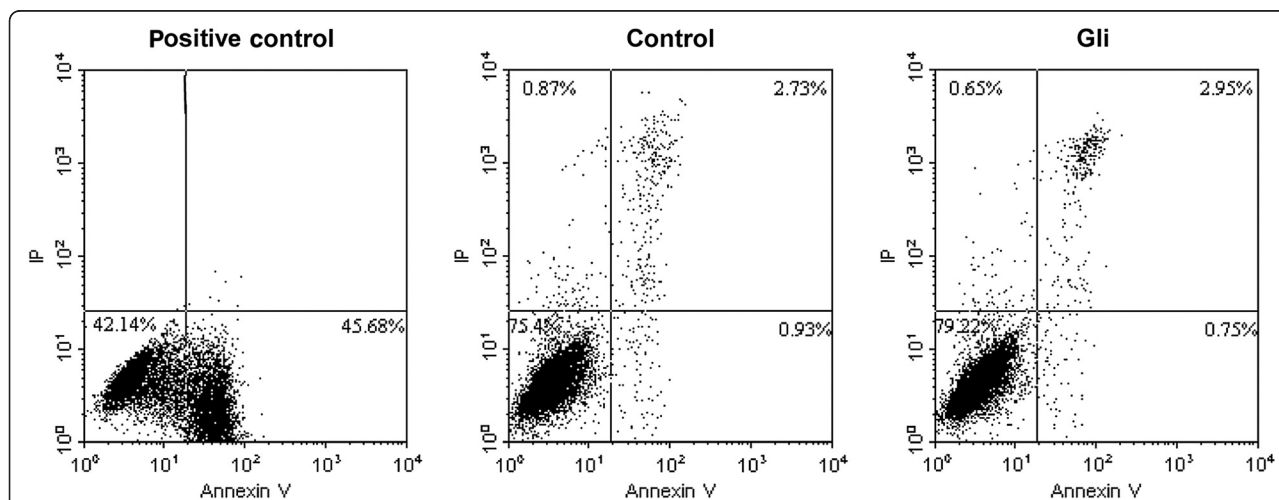
#### Effect of glibenclamide on cell death

To determine if the decrease in proliferation exerted by Gli could be due to an apoptotic effect, we assessed apoptosis by two different methodologies. Results showed that Gli did not increase the number of apoptotic cells by Annexin-V staining (3.66 ± 0.62% in control vs 3.70 ± 0.69%) after 72 h of treatment (Figure 3). In accordance, neither it produced the disruption of the

mitochondrial transmembrane potential ( $\Delta\Psi_m$ ) that is associated with mitochondrial dysfunction and linked to cell death and loss of cell viability (Table 2).

It is known that the Bcl-2 family of mitochondrial proteins is strongly linked to the process of apoptotic cell death; some members of the family act as antiapoptotic proteins such as Bcl-2, Bcl-x<sub>L</sub>, while others act as inducers of cell death as Bcl-x<sub>S</sub> and Bax [24-26]. We determined the expression of these proteins by flow cytometry and Western blot. By both methodologies we showed that 72 h after treatment with 25 μM Gli, the level of expression of pro-apoptotic protein Bax was slightly increased in relation to control at the same time, although this increase was not statistically significant (Figure 4A and 4B). On the other hand, antiapoptotic Bcl-2 protein did not modify its expression when cells were treated with Gli (Figure 4B). The pro-apoptotic isoform, Bcl-x<sub>S</sub>, showed a very low expression while the antiapoptotic isoform Bcl-x<sub>L</sub> expression levels were higher but did not significantly change with Gli-treatment (Figure 4A).

We also evaluated the induction of cell senescence as a mechanism of cell death. To identify the senescent cells, senescence-associated β-galactosidase (SA-β-GAL)



**Figure 3 Evaluation of apoptosis by Annexin-V method.** Apoptosis was assessed after incubating the cells with Gli or vehicle by 72 h. For positive control cells were treated with H<sub>2</sub>O<sub>2</sub> (5 mM) for 30 minutes. Fluorescence was evaluated immediately after Annexin-V staining by flow cytometry. Gli (25 μM) did not induce an increment in apoptosis of MDA-MB-231 cells. Positive Annexin-V cells are shown in both right quadrants.

**Table 2 Effect of Gli on mitochondrial transmembrane potential ( $\Delta\Psi_m$ )**

Time (hs)	$\Delta\Psi_m$ (% of control)
24	99.7 $\pm$ 7.3
48	97.0 $\pm$ 3.9
72	94.3 $\pm$ 12.7

Gli: 25  $\mu$ M glibenclamide. p:NS vs. control, One way ANOVA.

activity was assessed. MDA-MB-231 cells treated with 25  $\mu$ M Gli showed an increase in the percentage of senescent cells versus those treated with vehicle (3.5  $\pm$  0.4% vs 1.2  $\pm$  0.2%; Figure 5).

#### Effect of glibenclamide on cell differentiation

Differentiation is one possible mechanism involved in the loss of cell proliferative ability. In mammary cells the accumulation of neutral lipids in cytoplasm is a specific marker of this process. We evaluated by flow cytometry the content of neutral lipids using Nile-red staining and results demonstrated no differences between control and 25  $\mu$ M Gli treated cells up to 7 days (Table 3). Sodium butyrate, an effective differentiation agent in ER $\alpha$  (+) and ER $\alpha$  (-) breast cancer cells [27], was used as positive control.

#### Cytostatic effect of glibenclamide

To determine whether the growth inhibitory effect was reversible, a characteristic of cytostatic agents, cells were treated with 25  $\mu$ M Gli or vehicle for 3 or 7 days and then they were trypsinized and re-plated at low density in the absence of any treatment to assess clonogenic proliferation. Results in Figure 6 showed that there is no significant difference between Gli-pretreated cells for different time periods and control cells, suggesting that the antiproliferative effect of Gli is elicited only when the drug is present and it does not involve cell toxicity.

#### Combination treatments

We assayed the combination of Gli with tamoxifen or doxorubicin to explore a possible increase in efficacy. The growth of MDA-MB-231 cells was inhibited by tamoxifen with an IC<sub>50</sub> equal to 5  $\mu$ M (Figure 7A). The concentration of Gli that inhibited cell growth in a 50% (25  $\mu$ M) was used to evaluate the combined action of Gli plus tamoxifen. The inhibitory effect exerted by the combination of Gli plus tamoxifen was similar to that observed for Gli alone (Figure 7B).

Doxorubicin also inhibited cell proliferation in a concentration dependent manner (Figure 7C). The combination of 25  $\mu$ M Gli plus doxorubicin in doses over 0.05 nM was

more effective to inhibit cell proliferation than single treatments (Figure 7D).

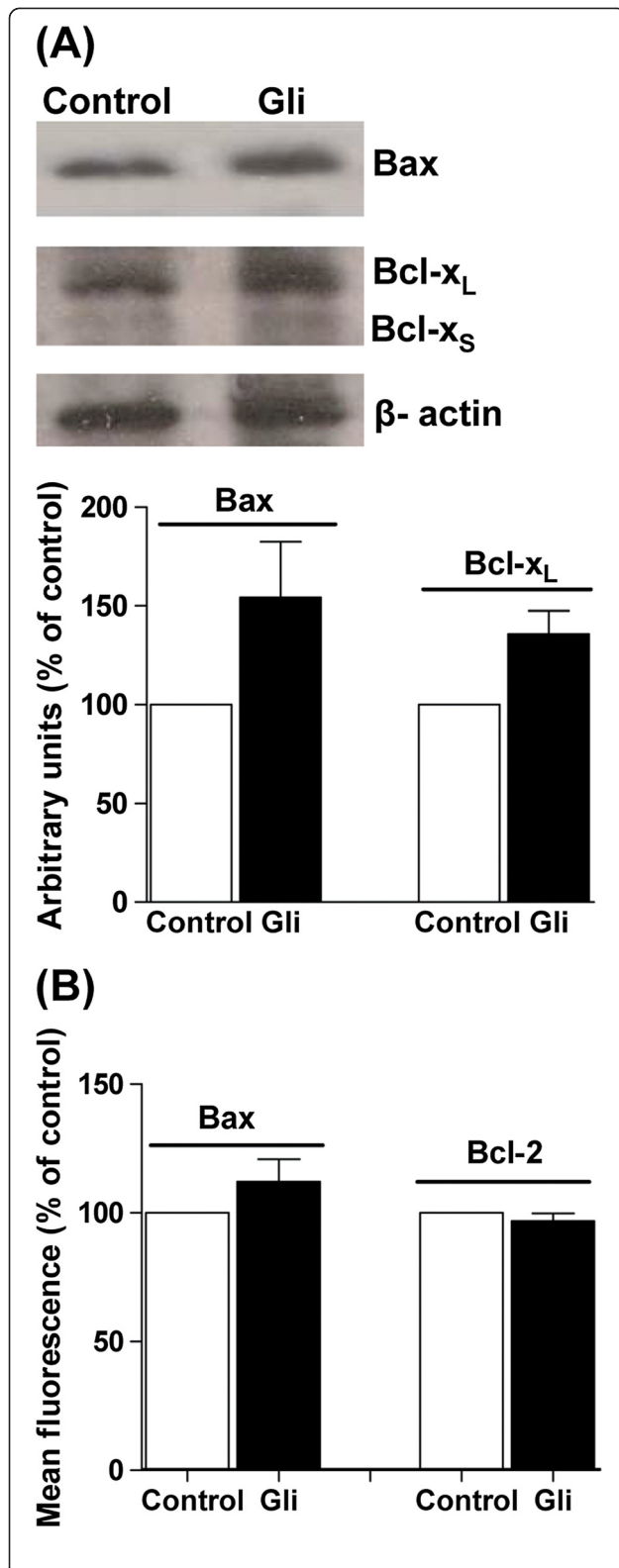
#### Discussion

Different subtypes of potassium channels have been shown to be directly implicated in normal and malignant cell proliferation [9]. Some of these channels are overexpressed in tumors and therefore they are potential targets for anticancer therapies [28].

We have previously demonstrated that Gli exerts an antitumoral action on NMU-induced mammary tumors in rats, which is an experimental model similar in ER expression and hormone-dependence to human breast cancer [29,30]. In these tumors Gli action was potentiated by the combination with tamoxifen [31]. In this paper we analyzed the effect of Gli in MDA-MB-231 ER $\alpha$  (-) breast cancer cell proliferation.

We studied the expression of mRNA for the different subunits that constitute K<sub>ATP</sub> channels in MDA-MB-231 cells and determined that these cells express both pore forming subunits, Kir6.1 and Kir6.2, and the regulatory subunit SUR2B. Coincidentally, Bondestine et al. have recently reported the expression of SUR2 protein in MDA-MB-231 cells, while SUR1 could not be detected in this cell line [32]. In consequence two whole octameric functional channels could be present in MDA-MB-231 cells. In specific tissues different subunit combinations have been detected, e.g., pancreatic  $\beta$  cells and neurons have Kir6.2/SUR1 channels, whereas skeletal muscle expresses Kir6.2/SUR2A channels. These differences imply that drugs may have distinct abilities to affect K<sub>ATP</sub> channels in diverse tissues depending on the type of SUR expressed [20]. Gli binds to every type of SUR and therefore inhibits the activity of all known K<sub>ATP</sub> channels [33]. When we assayed the effect of Gli on MDA-MB-231 cell proliferation, results showed that Gli inhibits clonogenic ability in a concentration-dependent way, with an increment in population doubling time. It has been reported that the potassium-dependent changes in membrane potential play a crucial role in the proliferation of many types of normal and tumor cells. The opening of potassium channels in the cell membrane produces a hyperpolarization of membrane potential which is required for the progression through the cell cycle. As a consequence in the presence of potassium channel blockers cell proliferation is inhibited [34,35]. Woodfort et al. early determined that different potassium channel antagonists, as Gli, produce a concentration-dependent growth inhibition on MCF-7 cells with a significant arrest of cells in G0/G1 phase [36]. Diverse drugs signaled as specific K<sub>ATP</sub> channel openers which include minoxidil, pinacidil and diazoxide augment DNA synthesis and proliferation of normal and tumor cells [37-39]. In the experiments using minoxidil

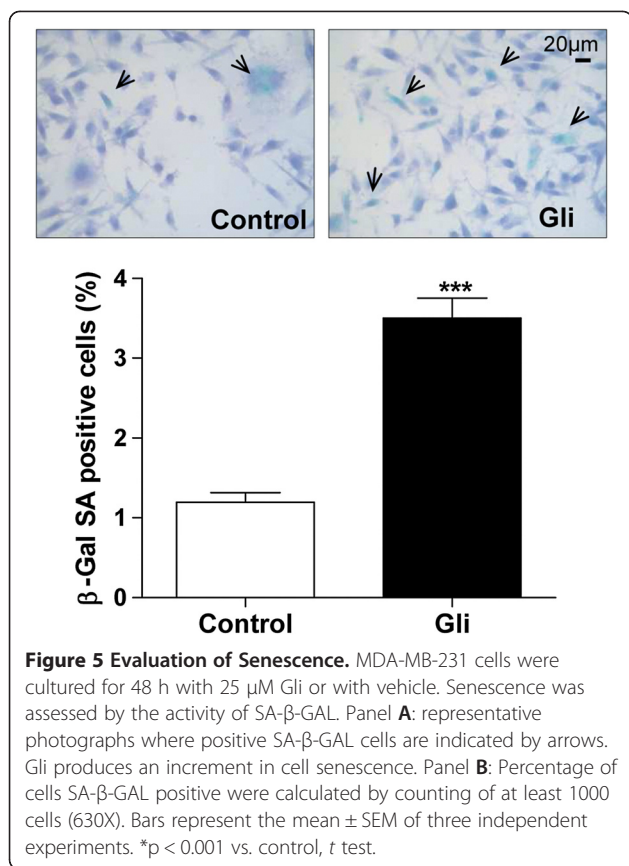




**Figure 4 Expression of proteins involved in apoptosis.** Panel **A**: Bax and Bcl-x<sub>L/S</sub> expression determined by Western Blot employing specific antibodies in MDA-MB-231 cells treated for 72 h with 25 μM Gli (Gli) or vehicle (control) cells. The figure shows a representative Western blot of three independent experiments and the quantification of bands obtained for Bax and Bcl-x<sub>L/S</sub> protein. Bars represent the mean ± SEM of three independent experiments. p: Non significant (NS), t test. Panel **B**: Expression of Bcl-2 and Bax protein in MDA-MB-231 cells treated by 72 h with 25 μM Gli (Gli) or vehicle, obtained by flow cytometry. Bars represent the mean fluorescence ± SEM obtained by three independent experiments. p: NS, t test.

we demonstrated an increase in MDA-MB-231 cell proliferation in concentrations over 0.05 μM. In addition when different concentrations of minoxidil were combined with 25 μM Gli the increment in proliferation was totally reverted. Taken together, these results suggest that Gli could reduce cell proliferation in MDA-MB-231 cells acting through K<sub>ATP</sub> channels.

The analysis of cell cycle progression indicated that 25 μM Gli produces an arrest in the G<sub>0</sub>/G<sub>1</sub> phase of cell cycle after 48 h of treatment. After release of serum starvation, the diminution of the proportion of cells in S phase in Gli treated cultures was confirmed by the decrease in BrdU incorporation. The cell division cycle integrates several processes and signal transduction pathways to commit the progression of a cell through or its arrest in a specific cell cycle phase. It is generally accepted that the cell cycle regulators cyclin D1 and cyclin E play an important role in early G<sub>1</sub> and late G<sub>1</sub> progression. In addition, the progression is tightly regulated by the respective cyclin activated subunits cyclin-dependent kinases (Cdks) and their inhibitors (Cdkis). p27 is a member of the Kip/CIP family of Cdkis known to act in the G<sub>1</sub> phase of the cell cycle, preventing G<sub>1</sub>-S transition [40,41]. The study of proteins involved in the progression through the phases of cell cycle by immunoblot, has evidenced a decrease in cyclin E expression with a raise in cyclin inhibitor p27<sup>Kip1</sup> in Gli treated MDA-MB-231 cells. It is known that the activity of cyclin E in conjunction with its kinase subunit Cdk2, is limiting for the passage of cells through the restriction point needed for the progression of cells from G<sub>1</sub> into S-phase [42]. p27<sup>Kip1</sup> binds to the cyclinE/Cdk2 complex and inhibits the kinase thus impeding G<sub>1</sub>-S passage [43]. Altogether our results suggest that Gli inhibits MDA-MB-231 cell proliferation by hindering G<sub>1</sub>-S transition. Other authors have also reported that different potassium channels blockers and other agents that cause cell membrane depolarization, produce the arrest of cells in G<sub>1</sub> phase with the involvement of different cyclins and inhibitors depending on the cell type [34]. Eto reported that various anti-cancer agents specifically up-regulate p27<sup>Kip1</sup> expression without affecting expression of the other regulatory proteins of G<sub>1</sub>-S cell cycle transition in human breast cancer



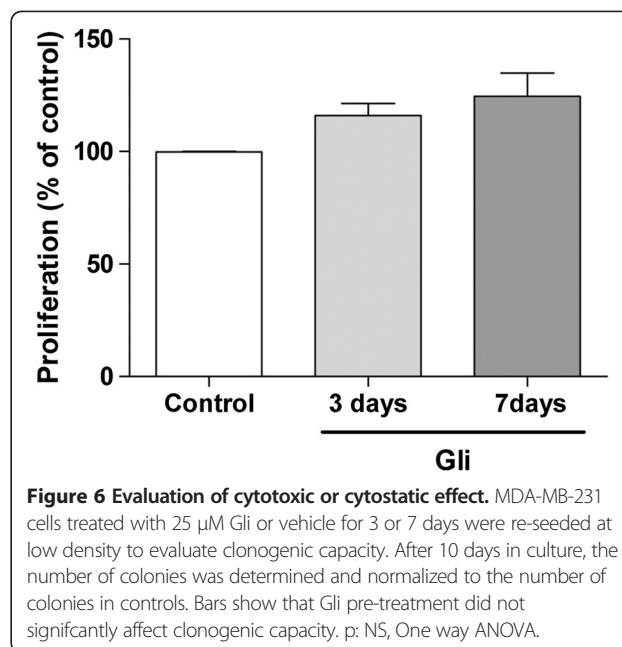
cell lines. Moreover, in concordance with our work, he reported that the up-regulation of p27<sup>Kip1</sup> expression in these cell lines by anti-cancer agents linearly and positively correlates with the degree of growth inhibition of NMU-induced mammary tumors by the same anti-cancer agent [44].

It has been suggested that chemotherapeutic agents can prevent mammary carcinogenesis and tumor growth through different mechanisms that include apoptosis, differentiation and senescence. Regardless of the mechanism, the evaluation of new antitumoral drugs has as a goal to stop the cell proliferation and produce the death of the tumor cell by apoptotic or non-apoptotic means [45]. Previously, working with NMU-induced mammary

**Table 3 Effect of Gli on neutral lipid accumulation**

Time (days)	Mean Fluorescence of Nile Red (% of control)	
	Gli	Na Butyrate
2	92.3 ± 4.7	134.3 ± 6.7 ***
3	99.3 ± 1.7	165.7 ± 7.3 ***
7	99.0 ± 10.1	192.7 ± 5.3 ***

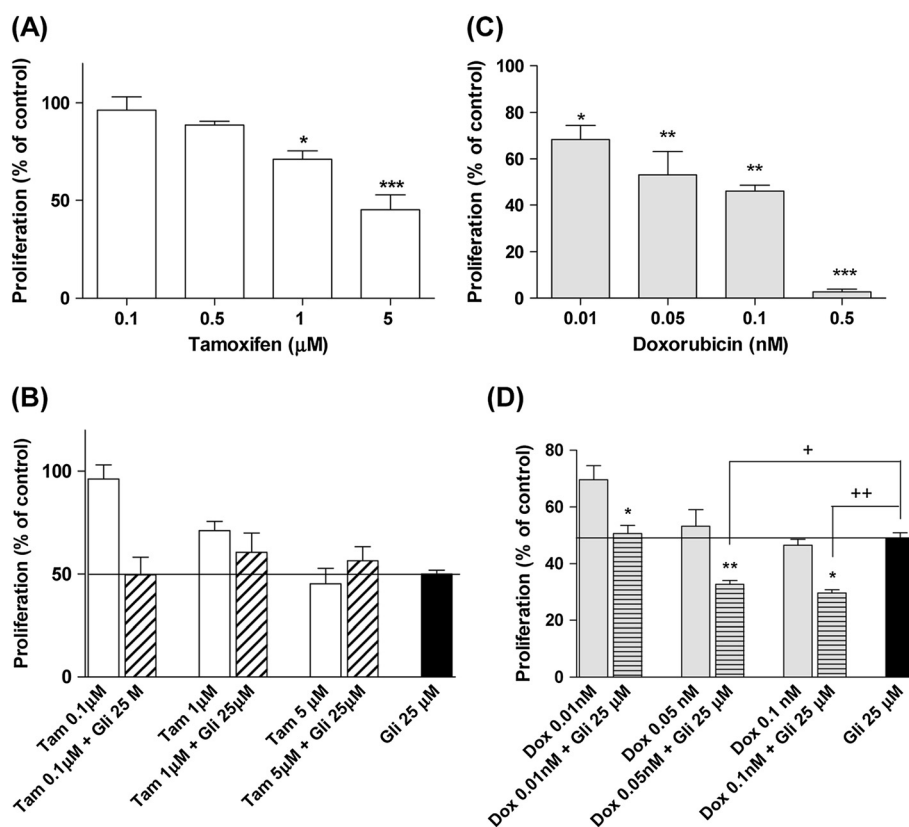
Gli: 25 μM glibenclamide. Na Butyrate: 10 mM Sodium butyrate as the positive control. p: NS Gli vs control; \*\*\* p < 0.001 butyrate vs control, One way ANOVA and Dunnet test.



tumors in rats, we reported that Gli clearly produced the inhibition of tumor growth through a decrease in cell proliferation and an increase in cell apoptosis and differentiation [31]. It has been reported that Gli produces apoptosis in malignant cell lines such as hepatoblastoma and gastric cancer cells [6,7]. Furthermore, Iwakura and coworkers found that Gli produces a sustained increase in the entrance of Ca<sup>2+</sup> to the cells inducing their death through apoptosis [46]. On the contrary, we demonstrated that Gli neither produced apoptosis nor triggered the early events of this mechanism of cell death in MDA-MB-231 cells. We also studied the expression of apoptosis related proteins and determined that Gli did not significantly affect the ratio of the expression of Bax/Bcl-2 proteins at any time evaluated. The relation between antiapoptotic and apoptotic proteins of Bcl-2 family is a better determinant of the susceptibility to apoptosis than the expression of each member separately.

In view that some chemotherapeutic agents are able to produce cell senescence as part of their mechanism of action [45], this possible way of action was studied in the MDA-MB-231 cells treated with Gli. Data obtained in our experiments indicate that there is a slight increase in cell senescence after Gli treatment. However, Gli did not result cytotoxic for neoplastic MDA-MB-231 cells so they clearly keep their clonogenic capacity after being exposed to Gli for seven days. Our results are in agreement with the reported by Woodfork et al., showing that Gli induced a cell cycle arrest in G<sub>0</sub>/G<sub>1</sub> phase in MCF-7 cells that could be reverted by the removal of the drug [36].

Mammary tumor cell differentiation is characterized by an arrest in cell proliferation, nuclear and cytoplasmic



**Figure 7 Glibenclamide combination with antineoplastic drugs.** MDA-MB-231 cell proliferation was evaluated by counting of colonies with 50 cells or more and expressed as percentage of controls (means  $\pm$  SEM of three independent experiments). Panel **A**: Results obtained with tamoxifen (Tam) 0.1, 0.5, 1 or 5  $\mu$ M. Panel **C**: Inhibition of proliferation obtained with doxorubicin (Dox) 0.01, 0.05, 0.1 or 0.5 nM. Panel **B** and **D**: Results obtained for combination of 25  $\mu$ M Gli plus different concentrations of Tam or Dox. Panel **A** and **C**: \* $p$  < 0.05 vs. control; \*\* $p$  < 0.01 vs. control; \*\*\* $p$  < 0.001 vs. control, ANOVA and Dunnet post test. Panel **B**:  $p$ : NS vs. Gli 25  $\mu$ M,  $t$  test. Panel **D**: \* $p$  < 0.05 vs. Dox 0.01 nM, vs. Dox 0.1 nM; \*\* $p$  < 0.001 vs Dox 0.05 nM; + $p$  < 0.05 vs. Dox 0.05 nM + Gli 25  $\mu$ M; ++ $p$  < 0.001 vs. Dox 0.1 nM + Gli 25  $\mu$ M. One way ANOVA and Tuckey post test.

morphological changes and also by the increased expression of the components of milk such as lipids [47,48]. The accumulation of neutral lipid drops in the cell cytoplasm is used as a marker of this process. In our research Gli did not induce differentiation in MDA-MB-231 cells after treatment for seven days.

Antiestrogens such as tamoxifen are widely used for the treatment of ER $\alpha$  (+) breast cancer. Nevertheless, tamoxifen may elicit pro-apoptotic effects in ER $\alpha$  (-) breast cancer cells by the modulation of various cell signaling pathways in an ER-independent manner [49-53]. However, these effects have generally been reported when relatively high concentrations of tamoxifen were used. In the present work we used tamoxifen in combination with Gli as a strategy to enhance its action in ER $\alpha$  (-) breast cancer even if Gli acts as cytostatic in MDA-MB-231 cells. In our experiments tamoxifen inhibited proliferation significantly at quite high concentrations (5  $\mu$ M) as expected and the combination treatment did not produce a higher inhibitory effect on cell proliferation than each treatment alone. Abdul et al. demonstrated that two nonspecific

potassium channels blockers, amiodarone and dequalinium, potentiated the growth inhibitory effects of tamoxifen on human breast, prostate and colon cancer cell lines [38]. In view of our previous results in NMU-induced mammary tumors [31] it could be suggested that Gli may potentiate tamoxifen action only in breast hormone-dependent cells.

Doxorubicin is extensively used in chemotherapy for patients with metastatic breast cancer. In spite of its excellent anti-tumor activity, the associated acute and chronic toxicities lead to a relatively low therapeutic index [54]. Therefore, combination treatment with a non-toxic drug which can lower the dose would be advantageous. Our results indicate that the combined treatment of Gli and doxorubicin displayed an additive anti-proliferative effect. In this regard, Gli was found to inhibit multidrug resistance protein (MRP1) activity in human lung cancer cells [55]. In addition it has been also demonstrated that the overexpression of the inwardly rectifying K channel Kir2.2 decreased doxorubicin-induced reactive oxygen species accumulation and cell

growth inhibition in several cancer cell lines [56]. Further studies are needed to fully investigate the mechanism involved in the antiproliferative response of MDA-MB-231 cells to the combined treatment glibenclamide with doxorubicin.

## Conclusions

Gli, a drug widely used in clinics for the treatment of type 2-diabetes, is atoxic at doses routinely employed and of low cost. Our experimental data clearly demonstrated that it produces a cytostatic effect in MDA-MB-231 cells inhibiting the G1-S phase progression without inducing cell death or differentiation. Nevertheless, in spite of the lack of cytotoxic action, the interesting observation about the effect of the combination of Gli with doxorubicin on proliferation warrants an exhaustive research to elucidate the pathways involved in this interaction, leading to the consideration of a novel role for Gli as an adjuvant in breast cancer treatment.

## Competing interests

The authors declare that they have no competing interests.

## Authors' contributions

MN is Ph.D and she designed the study, performed the experiments, interpreted the data, and wrote the manuscript. VM, GC, and CC are Ph.D. and carried out clonogenic and flow cytometry assays and participated in data analyses and interpretation. RB and GM are Ph.D. and participated in data analysis and discussion and critically revised the manuscript. MC carried out microscopic observation. ER performed the statistical analysis. All authors have expertise on radiopharmacology and receptors study. VM, CC, GM and RB are members of the National Research Council (CONICET). MN, VM, GC, CC, ER, RB, and GM are professors in the University of Buenos Aires. MC is M. D. and he is specialist in anatomopathology. All authors read and approved the final manuscript.

## Acknowledgements

This work was supported by grants from the National Agency of Scientific and Technological Promotion and from Barceló Foundation, Argentina. Vanina Medina, Claudia Cocca, Gabriela Martín and Rosa Bergoc are members of the National Research Council (CONICET).

## Author details

<sup>1</sup>Radioisotopes Laboratory, School of Pharmacy and Biochemistry, University of Buenos Aires, Buenos Aires, Argentina. <sup>2</sup>Institute of Immunooncology Dr. EJV Crescenti, Buenos Aires, Argentina. <sup>3</sup>Institute of Health Sciences Barceló, Buenos Aires, Argentina.

Received: 31 March 2012 Accepted: 7 January 2013

Published: 11 January 2013

## References

1. Krentz AJ, Bailey CJ: Oral antidiabetic agents. Current role in type 2 diabetes. *Drugs* 2005, **65**:385–411.
2. Lebovitz HE: Treating hyperglycemia in type 2 diabetes: new goals and strategies. *Cleve Clin J Med* 2002, **69**:809–820.
3. Lebovitz HE: Oral antidiabetic agents. *Med Clin North Am* 2004, **88**:847–863.
4. Shorter K, Farjo NP, Picksley SM, Randall VA: Human hair follicles contain two forms of ATP-sensitive potassium channels, only one of which is sensitive to minoxidil. *FASEB J* 2008, **22**:1725–1736.
5. Groop LC: Sulphonylureas in NIDDM. *Diabetes Care* 1992, **15**:737–754.
6. Kim JA, Kang YS, Lee SH, Lee EH, Yoo BH, Lee YS: Glibenclamide induces apoptosis through inhibition of cystic fibrosis transmembrane conductance regulator (CFTR) Cl(-) channels and intracellular Ca(2+) release in HepG2 human hepatoblastoma cells. *Biochem Biophys Res Commun* 1999, **261**:682–688.
7. Qian X, Li J, Ding J, Wang Z, Duan L, Hu G: Glibenclamide exerts an antitumor activity through reactive oxygen species-c-jun NH2-terminal kinase pathway in human gastric cancer cell line MGC-803. *Biochem Pharmacol* 2008, **76**:1705–1715.
8. Wonderlin WF, Strobl JS: Potassium channels, proliferation and G1 progression. *J Membr Biol* 1996, **154**:91–107.
9. Pardo LA: Voltage-gated potassium channels in cell proliferation. *Physiology* 2004, **19**:285–292.
10. Parkin DM, Bray F, Ferlay J, Pisani P: Global cancer statistics, 2002. *CA Cancer J Clin* 2005, **55**:74–108.
11. Al-Dhaheri MH, Shah YM, Basrur V, Pind S, Rowan BG: Identification of novel proteins induced by estradiol, 4-hydroxytamoxifen and acolbifene in T47D breast cancer cells. *Steroid* 2006, **71**:966–978.
12. Benson JR, Jatoi I, Keisch M, Esteva FJ, Makris A, Jordan VC: Early breast cancer. *Lancet* 2009, **373**:1463–1479.
13. Utsumi T, Kobayashi N, Hanada H: Recent perspectives of endocrine therapy for breast cancer. *Breast Cancer* 2007, **14**:194–199.
14. Jordan VC, Brodie AM: Development and evolution of therapies targeted to the estrogen receptor for the treatment and prevention of breast cancer. *Steroids* 2007, **72**:7–25.
15. Park BJ, Whichard ZL, Corey SJ: Dasatinib synergizes with both cytotoxic and signal transduction inhibitors in heterogeneous breast cancer cell lines—lessons for design of combination targeted therapy. *Cancer Lett* 2012, **320**:104–110.
16. Smith L, Watson MB, O'Kane SL, Drew PJ, Lind MJ, Cawkwell L: The analysis of doxorubicin resistance in human breast cancer cells using antibody microarrays. *Mol Cancer Ther* 2006, **5**:2115–2120.
17. Joensuu H, Gligorov J: Adjuvant treatments for triple-negative breast cancers. *Ann Oncol* 2012, **23**:vi40–vi45.
18. Soto-Cerrato V, Llagostera E, Montaner B, Scheffer GL, Perez-Tomas R: Mitochondria-mediated apoptosis operating irrespective of multidrug resistance in breast cancer cells by the anticancer agent prodigiosin. *Biochem Pharmacol* 2004, **68**:1345–1352.
19. Mody M, Dharker N, Bloomston M, Wang PS, Chou FS, Glickman TS, McCaffrey T, Yang Z, Pumfery A, Lee D, Ringel MD, Pinzone JJ: Rosiglitazone sensitizes MDA-MB-231 breast cancer cells to anti-tumour effects of tumour necrosis factor-alpha, CH11 and CYC202. *Endocr Relat Cancer* 2007, **14**:305–315.
20. Jovanović S, Du Q, Mukhopadhyay S, Swingler R, Buckley R, McEachen J, Jovanović A: A patient suffering from hypokalemic periodic paralysis is deficient in skeletal muscle ATP-sensitive K channels. *Clin Transl Sci* 2008, **1**:71–74.
21. Bradford MM: A rapid and sensitive method for the quantification of microgram quantities of protein utilizing the principle of protein-dye binding. *Anal Biochem* 1976, **72**:248–254.
22. Dimiri GP, Lee X, Basile G, Acosta M, Scott G, Roskelley C, Medrano EE, Linskens M, Rubelj I, Pereira-Smith O, et al: A biomarker that identifies senescent human cells in culture and in aging skin in vivo. *Proc Natl Acad Sci USA* 1995, **92**:9363–9367.
23. Greenspan P, Mayer E, Fowler S: Nile Red: A selective fluorescent stain for intracellular lipid droplets. *J Cell Biol* 1985, **100**:965–973.
24. Zhang GJ, Kimijima I, Onda M, Kanno M, Sato H, Watanabe T, Tsuchiya A, Abe R, Takenoshita S: Tamoxifen-induced apoptosis in breast cancer cells relates to down-regulation of bcl-2, but not bax and bcl-x(L), without alteration of p53 protein levels. *Clin Cancer Res* 1999, **5**:2971–2977.
25. Mohamad N, Gutiérrez A, Núñez M, Cocca C, Martín G, Cricco G, Medina V, Rivera E, Bergoc R: Mitochondrial apoptotic pathways. *Biocell* 2005, **29**:149–161.
26. Schmitt E, Paquet C, Beauchemin M, Bertrand R: DNA-damage response network at the crossroads of cell-cycle checkpoints, cellular senescence and apoptosis. *J Zhejiang Univ Sci B* 2007, **8**:377–397.
27. Davis T, Kennedy C, Chiew YE, Clarke CL, De Fazio A: Histone deacetylase inhibitors decrease proliferation and modulate cell cycle gene expression in normal mammary epithelial cells. *Clin Cancer Res* 2000, **6**:4334–4342.
28. Felipe A, Vicente R, Villalonga N, Roura-Ferrer M, Martínez-Mármol R, Solé L, Ferreres JC, Condom E: Potassium channels: new targets in cancer therapy. *Cancer Detect Prev* 2006, **30**:375–385.

29. Martin G, Melito G, Rivera E, Levin E, Davio C, Cricco G, Andrade N, Caro R, Bergoc R: **Effect of tamoxifen on intraperitoneal N-nitroso-N-methylurea induced tumors.** *Cancer Lett* 1996, **100**:227–234.
30. Martin G, Rivera ES, Daivo C, Cricco G, Levin E, Cocca C, Andrade N, Caro R, Bergoc RM: **Receptors characterization of intraperitoneally N-nitroso-N-methylurea-induced mammary tumors in rats.** *Cancer Lett* 1996, **101**:1–8.
31. Cocca C, Martín G, Núñez M, Gutiérrez A, Cricco G, Mohamad N, Medina V, Croci M, Crescenti E, Rivera E, Bergoc R: **Effect of glibenclamide on N-nitroso-methylurea-induced mammary tumors in diabetic and nondiabetic rats.** *Oncology Res* 2005, **15**:301–311.
32. Bodenstine TM, Vaidya KS, Ismail A, Beck BH, Diers AR, Edmonds MD, Kirsammer GT, Landar A, Welch DR: **Subsets of ATP-sensitive potassium channel (KATP) inhibitors increase gap junctional intercellular communication in metastatic cancer cell lines independent of SUR expression.** *FEBS Lett* 2012, **586**:27–31.
33. Du Q, Jovanović S, Sukhodub A, Barratt E, Drew E, Whalley KM, Kay V, McLaughlin M, Telfer EE, Barratt CL, Jovanović A: **Human oocytes express ATP-sensitive K(+) channels.** *Hum Reprod* 2010, **25**:2774–2782.
34. Ouadid-Ahidouch H, Ahidouch A: **K+ channel expression in human breast cancer cells: involvement in cell cycle regulation and carcinogenesis.** *J Membr Biol* 2008, **221**:1–6.
35. Jang SS, Park J, Hur SW, Hong YH, Hur J, Chae JH, Kim SK, Kim J, Kim HS, Kim SJ: **Endothelial progenitor cells functionally express inward rectifier potassium channels.** *Am J Physiol Cell Physiol* 2011, **301**:C150–C161.
36. Woodfork KA, Wonderlin WF, Peterson VA, Strobl JS: **Inhibition of ATP-sensitive potassium channels causes reversible cell-cycle arrest of human breast cancer cells in tissue culture.** *J Cell Physiol* 1995, **162**:163–171.
37. Malhi H, Irani AN, Rajvanshi P, Suadicani SO, Spray DC, McDonald TV, Gupta S: **KATP channels regulate mitogenically induced proliferation in primary rat hepatocytes and human liver cell lines. Implications for liver growth control and potential therapeutic targeting.** *J Biol Chem* 2000, **275**:26050–26057.
38. Abdul M, Santo A, Hoosain N: **Activity of potassium channel-blockers in breast cancer.** *Anticancer Res* 2003, **23**:3347–3351.
39. Huang W, Acosta-Martínez M, Levine JE: **Ovarian steroids stimulate adenosine triphosphate-sensitive potassium (KATP) channel subunit gene expression and confer responsiveness of the gonadotropin-releasing hormone pulse generator to KATP channel modulation.** *Endocrinology* 2008, **149**:2423–2432.
40. Diehl JA: **Cycling to cancer with cyclin D1.** *Cancer Biol Ther* 2002, **1**:226–231.
41. Gladden AB, Diehl JA: **Location, location, location: the role of cyclin D1 nuclear localization in cancer.** *J Cell Biochem* 2005, **96**:906–913.
42. Möröy T, Geisen C: **Cyclin E.** *Int J Biochem Cell Biol* 2004, **36**:1424–1439.
43. Conradie R, Bruggeman FJ, Ciliberto A, Csikász-Nagy A, Novák B, Westerhoff HV, Snoep JL: **Restriction point control of the mammalian cell cycle via the cyclin E/Cdk2:p27 complex.** *FEBS J* 2010, **277**:357–367.
44. Eto I: **Upstream molecular signaling pathways of p27(Kip1) expression in human breast cancer cells in vitro: differential effects of 4-hydroxytamoxifen and deficiency of either D-(+)-glucose or L-leucine.** *Cancer Cell Int.* 2011, **11**:31.
45. Christov K, Grubbs CJ, Shilkaitis A, Juliana MM, Lubet RA: **Short-term modulation of cell proliferation and apoptosis and preventive/therapeutic efficacy of various agents in a mammary cancer model.** *Clin Cancer Res* 2007, **13**:5488–5496.
46. Iwakura T, Fujimoto S, Kagimoto S, Inada A, Kubota A, Someya Y, Ihara Y, Yamada Y, Seino Y: **Sustained enhancement of Ca(2+) influx by glibenclamide induces apoptosis in RINm5F cells.** *Biochem Biophys Res Commun* 2000, **271**:422–428.
47. You H, Yu W, Sanders BG, Kline K: **RRR- $\alpha$ -tocopheryl succinate induces MDA-MB-435 and MCF-7 human breast cancer cells to undergo differentiation.** *Cell Growth Diff* 2001, **12**:471–480.
48. Münster PN, Srethapakdi M, Moasser MM, Rosen N: **Inhibition of heat shock protein 90 function by ansamycins causes the morphological and functional differentiation of breast cancer cells.** *Cancer Res* 2001, **61**:2945–2952.
49. Fattman CL, An B, Sussman L, Dou QP: **p53-independent dephosphorylation and cleavage of retinoblastoma protein during tamoxifen-induced apoptosis in human breast carcinoma cells.** *Cancer Lett* 1998, **130**:103–113.
50. Ferlini C, Scambia G, Marone M, Distefano M, Gaggini C, Ferrandina G, Fattorossi A, Isola G, Benedetti Panici P, Mancuso S: **Tamoxifen induces oxidative stress and apoptosis in oestrogen receptor-negative human cancer cell lines.** *Br J Cancer* 1999, **79**:257–263.
51. Mandlekar S, Yu R, Tan TH, Kong AN: **Activation of caspase-3 and c-Jun NH2-terminal kinase-1 signaling pathways in tamoxifen-induced apoptosis of human breast cancer cells.** *Cancer Res* 2000, **60**:5995–6000.
52. Scandlyn MJ, Stuart EC, Somers-Edgar TJ, Menzies AR, Rosengren RJ: **A new role for tamoxifen in oestrogen receptor-negative breast cancer when it is combined with epigallocatechin gallate.** *Br J Cancer* 2008, **99**:1056–1063.
53. Zhang X, Ding L, Kang L, Wang ZY: **Estrogen receptor-alpha 36 mediates mitogenic antiestrogen signaling in ER-negative breast cancer cells.** *PLoS One* 2012, **7**:e30174.
54. Chen JH, Ling R, Yao Q, Li Y, Chen T, Wang Z, Li KZ: **Effect of small-sized liposomal Adriamycin administered by various routes on a metastatic breast cancer model.** *Endocr Relat Cancer* 2005, **12**:93–100.
55. Payen L, Delugin L, Courtois A, Trinquart Y, Guillouzo A, Fardel O: **The sulphonylurea glibenclamide inhibits multidrug resistance protein (MRP1) activity in human lung cancer cells.** *Br J Pharmacol* 2001, **132**(3):778–784.
56. Lee I, Park C, Kang WK: **Knockdown of inwardly rectifying potassium channel Kir2.2 suppresses tumorigenesis by inducing reactive oxygen species-mediated cellular senescence.** *Mol Cancer Ther* 2010, **9**(11):2951–2959.

doi:10.1186/2050-6511-14-6

Cite this article as: Núñez et al.: Glibenclamide inhibits cell growth by inducing G0/G1 arrest in the human breast cancer cell line MDA-MB-231. *BMC Pharmacology and Toxicology* 2013 **14**:6.

**Submit your next manuscript to BioMed Central and take full advantage of:**

- Convenient online submission
- Thorough peer review
- No space constraints or color figure charges
- Immediate publication on acceptance
- Inclusion in PubMed, CAS, Scopus and Google Scholar
- Research which is freely available for redistribution

Submit your manuscript at  
www.biomedcentral.com/submit

