



AMADEA

**FRUIT OF A PUBLIC - PRIVATE AND NGO  
COOPERATION: *EXPANSION OF HIGH QUALITY  
BEAN SEEDS IN MADAGASCAR, SOURCES OF  
IMPORTANT INCOMES TO PRODUCERS***



Centro Internacional de Agricultura Tropical  
International Center for Tropical Agriculture  
*A Remarkable Record of Science for Change*  
Since 1967



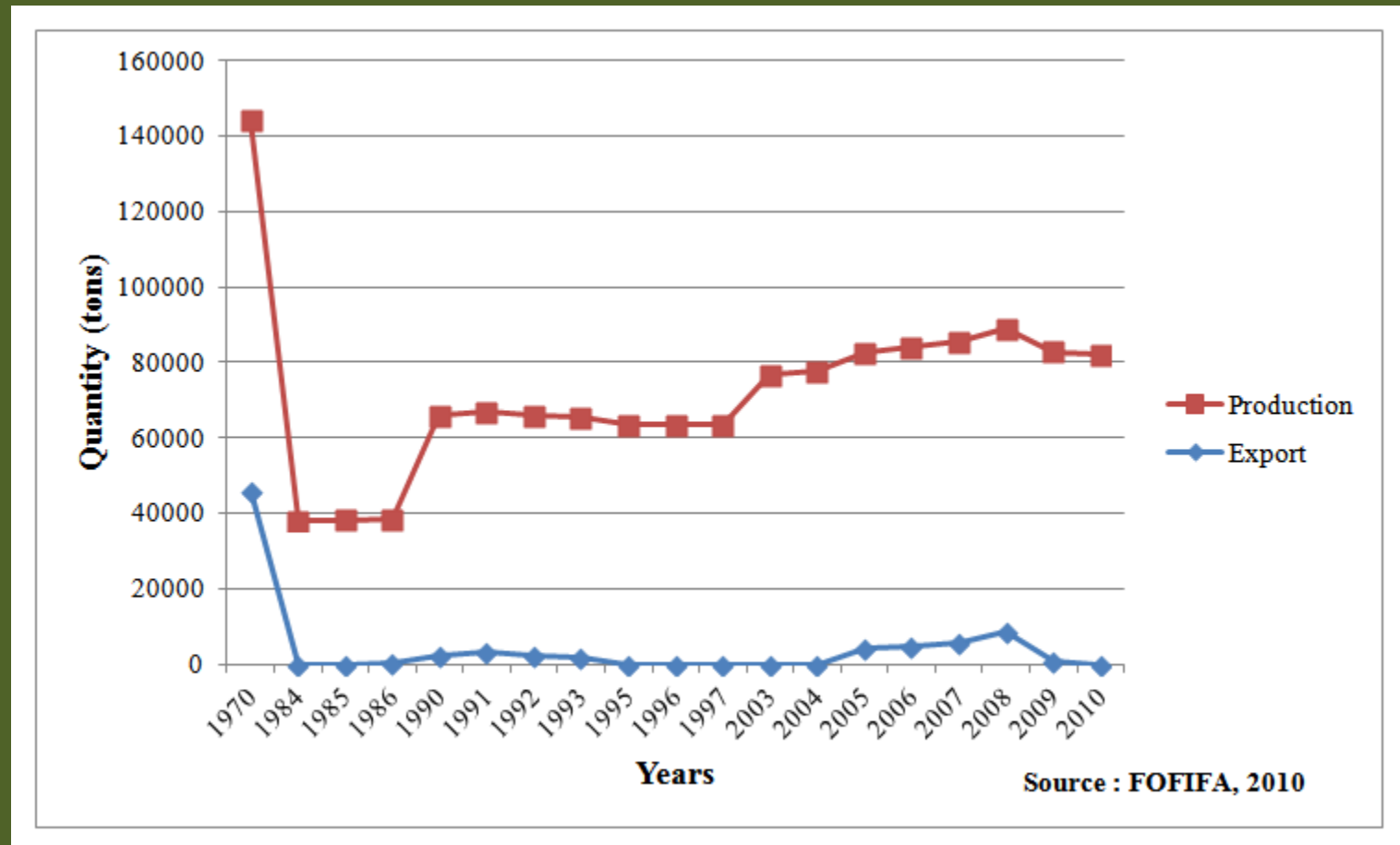
Fevrier 2014

# Context

In 2009 :

- Some projects such as PARECAM, searched for big amount of reliable bean seeds but did not find (20 t to avail to its FGS seed producer)
- Research center FOFIFA had at its disposal only 180 kg of breeder seeds available
- The first programme of seed production was planned to obtain 1800 kg of basic seeds, then 18t of certified seeds, and 180 t at the end.

# Evolution of bean production and export



# Organisation

- PARECAM = source of finance
- FOFIFA = source of materials, and technical supervisor
- AMADEA and affiliated FG = responsible for cropping
  
- A MOU was signed

Year	Region of production	Institution / Entity	Quantity produced (kg)	Observation
2009	Analamanga	FOFIFA	180	Semences souches (Foundation ??)
2010	Analamanga	FOFIFA	1 800	Pre basic seeds / breeder seeds
2010	Analamanga	AMADEA	18 000	Basic seed
2011	Itasy	FIKOTAMIFI (Farmers'association)	60 000	Certified seeds
	Analamanga	AMADEA	60 000	Certified seeds
	Haute Matsiatra	KLI (GPS) SD Mad (Private) CRAM (Project)	60 000	Certified seeds
2011	Menabe	AD2M & GPS	6 341 16 854	Basic seed s QDS
2012	Menabe	AD2M & GPS	70 000 72 000	Basic seed s QDS
2013	Menabe	AD2M	N.A. N.A.	QDS Grains
	Analamanga	AMADEA	12 900	Basic seeds

# NOTES

- Partnership allow to reach the objectives within 2 years only
- The value chain began to be revitalised
- Special thanks to CIAT, PABRA, ECABREN for their critical role in the process (technical and financial supports)
- We are satisfied because farmers took consistent benefit from the collaboration

## NOTES (Cont'd)

- New partnerships in seed production coming later such as with AD2M, FAO, ... allowed to increase considerably the volume of various seeds and varieties.
- 2013 is an exceptional year for farmers mainly in Menabe and Antananarivo: the price for 1kg has been increased 4-times than usual; from Ar 1 400 to Ar 4000



**Old house (before collaboration)** 13



**Newly built house with comfort** 3



**Poultry with two levels** .12.2013



**Inside the poultry: eggs and hens** 14





Room intended for bean storage



Farmer and her newly bought dairy cow