

Experimental study of the magnetosuperconductor $\text{RuSr}_2\text{Eu}_{1.5}\text{Ce}_{0.5}\text{Cu}_2\text{O}_{10-\delta}$: Effect of Mo doping on magnetic behavior and T_c variation

V. P. S. Awana,* R. Lal, and H. Kishan

National Physical Laboratory, Dr. K.S. Kirishnan Marg, New Delhi-110012, India

A. V. Narlikar,† M. Peurla, and R. Laiho

Wihuri Physical Laboratory, University of Turku, FIN-20014, TURKU, Finland

(Received 9 June 2005; revised manuscript received 21 July 2005; published 19 January 2006)

Mo doped ruthenocuprates $\text{Ru}_{1-x}\text{Mo}_x\text{Sr}_2\text{Eu}_{1.5}\text{Ce}_{0.5}\text{Cu}_2\text{O}_{10-\delta}$ are synthesized for $x=0.0, 0.2, 0.4, 0.6, 0.8,$ and $1.0,$ and their magnetic and superconducting properties are studied. It has been found that the magnetic transition temperature T_{ZFC}^{peak} , which corresponds to the appearance of a weak ferromagnetic effect, decreases from its value of 75 K for $x=0.0$ to 22, 25, and 18 K, respectively for the $x=0.2, 0.4,$ and 0.6 samples. Another finding is that the magnetic susceptibility reduces at T_{ZFC}^{peak} by a factor of about 6, 85, and 413 for $x=0.2, 0.4,$ and $0.6,$ respectively. The samples of $x=0.8$ and 1.0 are found to have no magnetic or superconducting effects. The values of the superconducting transition temperature are obtained from the resistivity versus the temperature data. An important result is that T_c increases by 4.5 and 7.0 K for $x=0.2$ and $0.4,$ respectively, and then decreases by 17 K for $x=0.6.$ The observed variation of T_c with x has been explained in terms of a theory which combines the effects of weakening magnetic behavior and reducing carrier concentration in a phenomenological manner. The resulting theory is found to provide a good agreement with the observed value of $T_c.$

DOI: [10.1103/PhysRevB.73.014517](https://doi.org/10.1103/PhysRevB.73.014517)

PACS number(s): 74.70.Pq, 74.25.Ha, 74.25.Fy

I. INTRODUCTION

Coexistence of superconductivity and magnetism (in particular the ferromagnetism) within a single (thermodynamical) phase has been a point of discussion over several decades.^{1,2} Early evidence of these two coexisting phenomenon were realized in various f -electron compounds such as $\text{ErRh}_4\text{B}_4.$ ^{3,4} Recently coexistence of superconductivity and magnetism has also been observed in UGe_2 (Ref. 5), ZrZn_2 (Ref. 6), and in ruthenocuprates such as $\text{RuSr}_2\text{GdCu}_2\text{O}_8$ (Ru-1212) and $\text{RuSr}_2(\text{Gd, Sm, Eu})_{1.6}\text{Ce}_{0.4}\text{Cu}_2\text{O}_{10-\delta}$ (Ru-1222) (Refs. 7–9). In the ruthenocuprates, magnetism originates basically from the RuO_2 sheets, and superconductivity arises from the CuO_2 layers. Experiments like ESR, NMR, and magneto-optics show genuine coexistence of superconductivity and magnetism within the same phase of these compounds.^{8,10,11} Some workers have also considered the possibility of phase separation, i.e., isolated superconducting and magnetic regions within the same compound.^{12–15}

More information on the interacting magnetism and superconductivity in ruthenocuprates can be gained from such ruthenocuprates where Ru is replaced partially by other ions of magnetic (Co, Fe) or nonmagnetic (Nb, Mo) nature. A study of the change in the magnetic properties of such a composite system is expected to provide useful information. In this regard there are already some reports on $\text{Ru}_{1-x}\text{M}_x$:1222 (Refs. 16–18), where $\text{M}=\text{Fe, Co, Nb, and Mo.}$ In this paper we consider a substitution of Ru by Mo, and measure electric and magnetic behavior for various contents of Mo. It may be noted that both Ru-1222 and Mo-1222 are isostructural,^{16,19} so we do not expect complications from the lattice effects in the doped system. We study the electrical and magnetic properties of $\text{Ru}_{1-x}\text{Mo}_x\text{Sr}_2\text{Eu}_{1.5}\text{Ce}_{0.5}\text{Cu}_2\text{O}_{10-\delta}$ ($1.0 \geq x \geq 0.0$) magnetosu-

perconductor. We expect these properties to be affected by Mo due to its two main roles. The first is the decrease of carrier density by the Mo substitution because Mo has a valency of +6, while Ru has valency of +5. The second role of Mo lies in diluting the magnetic effect of Ru. This is expected to result in the increased superconducting transition temperature $T_c,$ as the low T_c of ruthenocuprates is due to partial suppression of superconductivity by the magnetism caused by Ru ions.

II. EXPERIMENTAL DETAILS

Samples of a $\text{Ru}_{1-x}\text{Mo}_x\text{Sr}_2\text{Eu}_{1.5}\text{Ce}_{0.5}\text{Cu}_2\text{O}_{10-\delta}$ ($1.0 \geq x \geq 0.0$) series were synthesized through a solid-state reaction route from stoichiometric amounts of $\text{RuO}_2, \text{SrO}_2, \text{Eu}_2\text{O}_3, \text{CeO}_2, \text{CuO, and Mo}_2\text{O}_3.$ Calcinations were carried out on mixed powders at 1000 °C, 1020 °C, and 1040 °C for 24 h at each temperature with intermediate grindings. The pressed bar-shaped pellets were annealed in a flow of oxygen at 1075 °C for 40 h and subsequently cooled slowly over a span of another 20 h down to room temperature. The same pellets were further annealed in a flow of O_2 at one atmospheric pressure at 400 °C for 24 h and slowly cooled to room temperature in the same environment over a span of 6 h. X-ray diffraction (XRD) patterns were collected at room temperature with CuK_α radiation. Resistivity measurements were carried out by conventional four-probe method on a close-cycle-refrigerator (CCR) down to 12 K. Magnetization measurements were performed on a SQUID magnetometer (Cryogenic Ltd., model S600).

III. RESULTS AND DISCUSSION

A. X-ray diffraction

X-ray diffraction (XRD) patterns for $\text{Ru}_{1-x}\text{Mo}_x\text{Sr}_2\text{Eu}_{1.5}\text{Ce}_{0.5}\text{Cu}_2\text{O}_{10-\delta}$ ($1.0 \geq x \geq 0.0$) series of

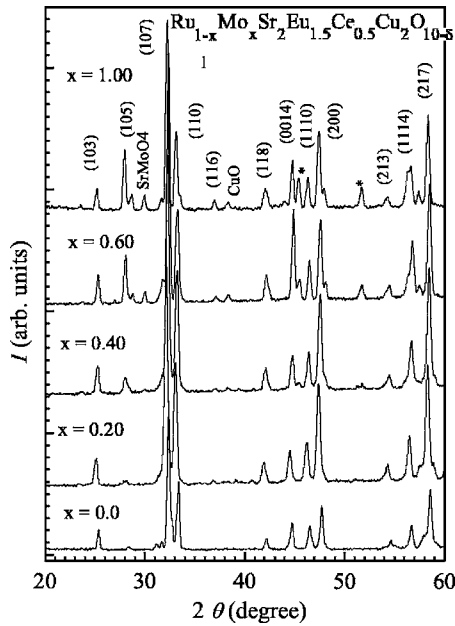


FIG. 1. X-ray diffraction patterns for the $\text{Ru}_{1-x}\text{Mo}_x\text{Sr}_2\text{Eu}_{1.5}\text{Ce}_{0.5}\text{Cu}_2\text{O}_{10-\delta}$ system.

samples are shown in Fig. 1. It is evident from this figure that all samples crystallize in a single phase with tetragonal structure (space group $I4/mmm$). Respective indices are shown in the figure. As far as pristine $x=0.0$ is concerned, very small amounts of SrRuO_3 and/or $\text{GdSr}_2\text{RuO}_6$ are seen close to the main intensity peaks which had earlier been noted by other works also.^{7,11,12,16} Our currently studied samples are in fact, far better in terms of their phase purity as compared to those reported earlier by various authors. As far as the position (2θ) of main peaks are concerned, a small decrease in them is seen due to lower ionic size of Mo^{6+} than of the Ru^{5+} ion. This is in agreement with earlier reports on the same system.^{16,19} The pristine compound ($x=0$) has its lattice parameters $a=b=3.835$ (2) Å and $c=28.493$ (6) Å. On the other hand lattice parameters of the fully Mo substituted ($x=1$) compound are $a=b=3.843$ (5) Å and $c=28.4653$ (4) Å. For Mo concentrations higher than $x=0.6$, some extra peaks (marked with *) of small intensity, along with SrMoO_4 and CuO are also seen. Despite the presence of small intensity unreacted peaks, the majority of $\text{Ru}_{1-x}\text{Mo}_x\text{Sr}_2\text{Eu}_{1.5}\text{Ce}_{0.5}\text{Cu}_2\text{O}_{10-\delta}$ compounds are mainly single phase.

B. Magnetic behavior

In Fig. 2 we show the magnetization M of ruthenocuprate $\text{Ru}_{1-x}\text{Mo}_x\text{Sr}_2\text{Eu}_{1.5}\text{Ce}_{0.5}\text{Cu}_2\text{O}_{10-\delta}$ at different values of the applied magnetic field H . In fact, we have applied magnetic fields up to 6 T. The results are shown for the superconducting samples ($x=0, 0.4$, and 0.6) and for the nonsuperconducting sample ($x=0.8$) at the temperature value of $T=5$ K. The observed behavior of M may be expressed as a sum of two contributions,

$$M = \chi H + \sigma_s(H). \quad (1)$$

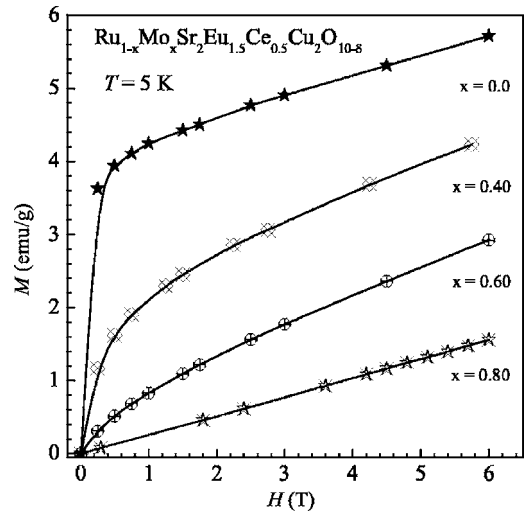


FIG. 2. M versus H for the $\text{Ru}_{1-x}\text{Mo}_x\text{Sr}_2\text{Eu}_{1.5}\text{Ce}_{0.5}\text{Cu}_2\text{O}_{10-\delta}$ system at 5 K for $x=0.0, 0.4, 0.6$, and 0.8 .

The first term on the right-hand-side of this equation is linear in the magnetic field H with χ as dc susceptibility. This contribution arises from the antiferromagnetic (AFM) or spin glass behavior of the Ru spins. The second term in the right-hand side of Eq. (1), $\sigma_s(H)$, represents the ferromagnetic (FM) component of the Ru spins. From Fig. 2 it is clear that the $x=0$ sample is characterized mainly by the FM component. In fact, if we extrapolate the M vs H curve down to $H=0$ T, it turns out that M takes the value 3.9 emu/g. This means that the $x=0$ ruthenocuprate has an essential presence of the FM effect in it. On the other hand the $x=0.8$ sample is completely linear in H in the complete range of the considered values of H . This means [cf. Eq. (1)] that the FM component $\sigma_s(H)=0$ for this sample. When we move from the $x=0.0$ sample to the $x=0.8$ sample via the $x=0.4$ and 0.6 samples, we observe from Fig. 2 that the FM component $\sigma_s(H)$ gets weakened with increasing x , while the linear component χH is enhanced. On this basis it may be said that with the increasing substitution of the Ru atoms by the Mo atoms the FM effect is diluted gradually so that at the 80% substitution by Mo atoms the FM effect is completely lost.

In Fig. 3 we present the plots of the temperature-dependence of the dc susceptibility χ for $x=0.0, 0.2, 0.4$, and 0.6 , in an applied field of 5 Oe. In the inset of this figure we show enlarged χ versus the T plot for $x=0.2$ to show, in particular, branching of the field-cooled (FC) and zero-field-cooled (ZFC) curves near 135 K. Formally, the shapes of the field-cooled and zero-field-cooled curves of Fig. 3 for different values of x are similar to that for $x=0$ (Ref. 20). The inset makes it clear for $x=0.2$. In order to compare the T -dependence of χ for various samples we present, in Table I, values of T_{mag} , χ_{ZFC}^{peak} and T_{ZFC}^{peak} . Here T_{mag} is the temperature where the antiferromagnetic (AFM) effect starts to occur when the temperature is lowered from the higher side. T_{mag} is identified from the separation of the FC and ZFC branches. χ_{ZFC}^{peak} denotes the maximum value of the susceptibility for the ZFC case. This value of χ signifies the appearance of a weak FM/spin-glass (SG) state.²¹ The weak

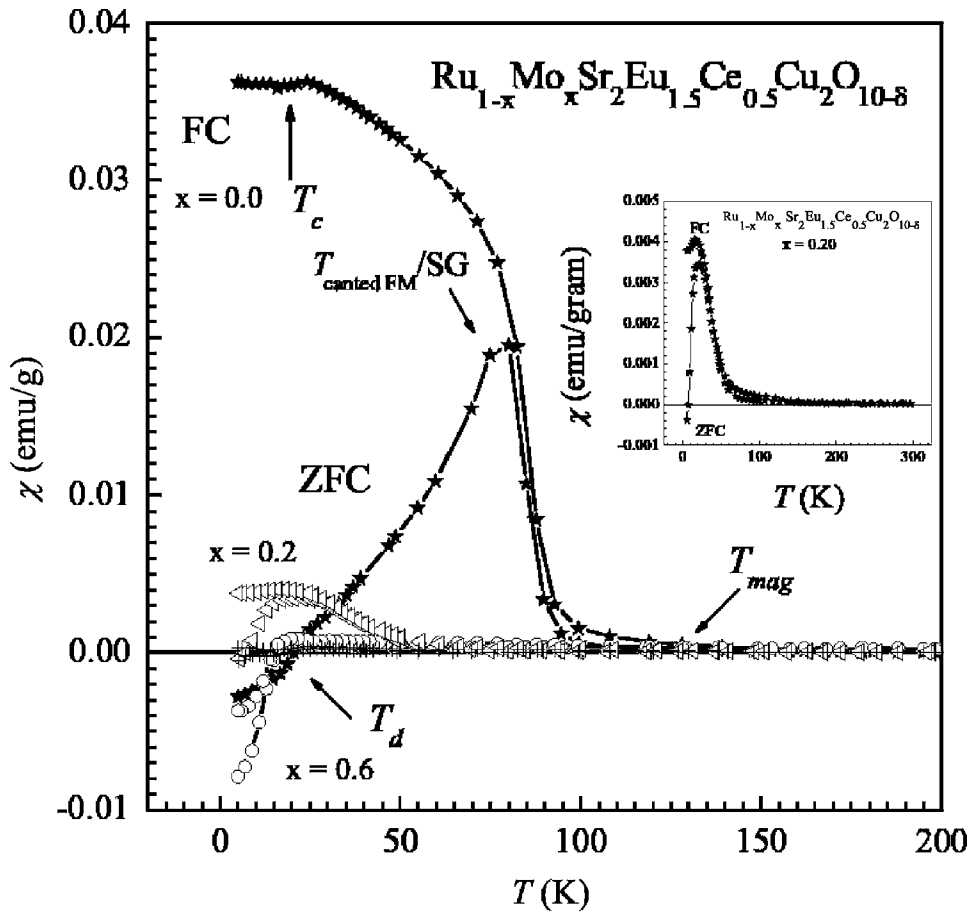


FIG. 3. χ versus T for the $\text{Ru}_{0.8}\text{Mo}_{0.2}\text{Sr}_2\text{Eu}_{1.5}\text{Ce}_{0.5}\text{Cu}_2\text{O}_{10-\delta}$ sample for $x=0.0, 0.2, 0.4,$ and 0.6 . The inset shows an enlarged form of the χ versus T behavior for $x=0.2$.

FM state is believed to originate from the canting of the Ru moments, which, in turn, results probably from an antisymmetric exchange coupling of the Dzyaloshinsky-Moriya type.²² The temperature at which χ has a peak in the ZFC branch is denoted by T_{ZFC}^{peak} .

From Table I we see that the temperature T_{mag} decreases slowly with increasing x . On the other hand T_{ZFC}^{peak} shows a sharp and complicated (nonmonotonic) behavior with increasing Mo content. First of all, T_{ZFC}^{peak} drops sharply, by 72%, for the $x=0.2$ sample. Then for the $x=0.4$ sample it increases slightly (by 3 K) with respect to that for the $x=0.2$ sample. For the $x=0.6$ sample, the value of T_{ZFC}^{peak} falls again. As far as the variation of χ_{ZFC}^{peak} for different x , we see from Table I that χ_{ZFC}^{peak} is reduced by a factor of about 6, 85, and 413 for the $x=0.2, 0.4,$ and 0.6 samples, respectively. Since the $x=0$ sample is already a weak FM material,²¹ this strong reduction of the values of χ_{ZFC}^{peak} with

TABLE I. Values of $T_{\text{mag}}, \chi_{ZFC}^{\text{peak}},$ and $T(\chi_{ZFC}^{\text{peak}})$ for $x=0.0, 0.2, 0.4,$ and 0.6 samples.

x	T_{mag} (K)	χ_{ZFC}^{peak} (emu/gm)	$T(\chi_{ZFC}^{\text{peak}})$ (K)
0.0	140	1.98×10^{-2}	78
0.2	135	3.3×10^{-3}	22
0.4	120	2.34×10^{-4}	25
0.6	100	4.8×10^{-5}	18

x implies that the FM effect disappears rapidly with increasing Mo content.

C. Resistivity and superconductivity

The resistivity (ρ) versus temperature plots for the Mo-doped samples of $\text{RuSr}_2\text{Eu}_{1.5}\text{Ce}_{0.5}\text{Cu}_2\text{O}_{10-\delta}$ are shown in Fig. 4 for temperature values up to 160 K. Only the superconducting values up to 160 K are shown in Fig. 4. The samples with 80% and 100% Mo are not superconducting, down to 12 K. It is clear from Fig. 4 that all the samples show upturn of resistivity near the onset transition temperature T_c^{onset} . The extent of upturn of ρ increases sharply for the $x=0.2$ sample in comparison to that of the $x=0$ sample. The $x=0.4$ sample has almost the same T -dependence of ρ (up to 160 K) as for the $x=0.2$ sample. But the extent of the upturn to ρ near T_c^{onset} is once more enhanced sharply for the $x=0.6$ sample. The overall behavior to the ρ versus T plots of Fig. 4 is reminiscent of the underdoped cuprate superconductors,²³ and is in general, in agreement with other reports on the $\text{RuSr}_2\text{Eu}_{1.5}\text{Ce}_{0.5}\text{Cu}_2\text{O}_{10-\delta}$ superconductor.^{7,11,12,16}

We estimate the transition temperature T_c for different values of x from Fig. 4 in a way described in (Ref. 24). The values of T_c obtained in this way are shown in Fig. 5 for $x=0.0, 0.2, 0.4,$ and 0.6 . An interesting result from Fig. 5 is that up to $x=0.4$ Mo enhances T_c with increasing x . In fact estimated values of T_c are 33, 37.5, 40, and 23 K for $x=0.0, 0.2, 0.4,$ and 0.6 , respectively. In order to understand

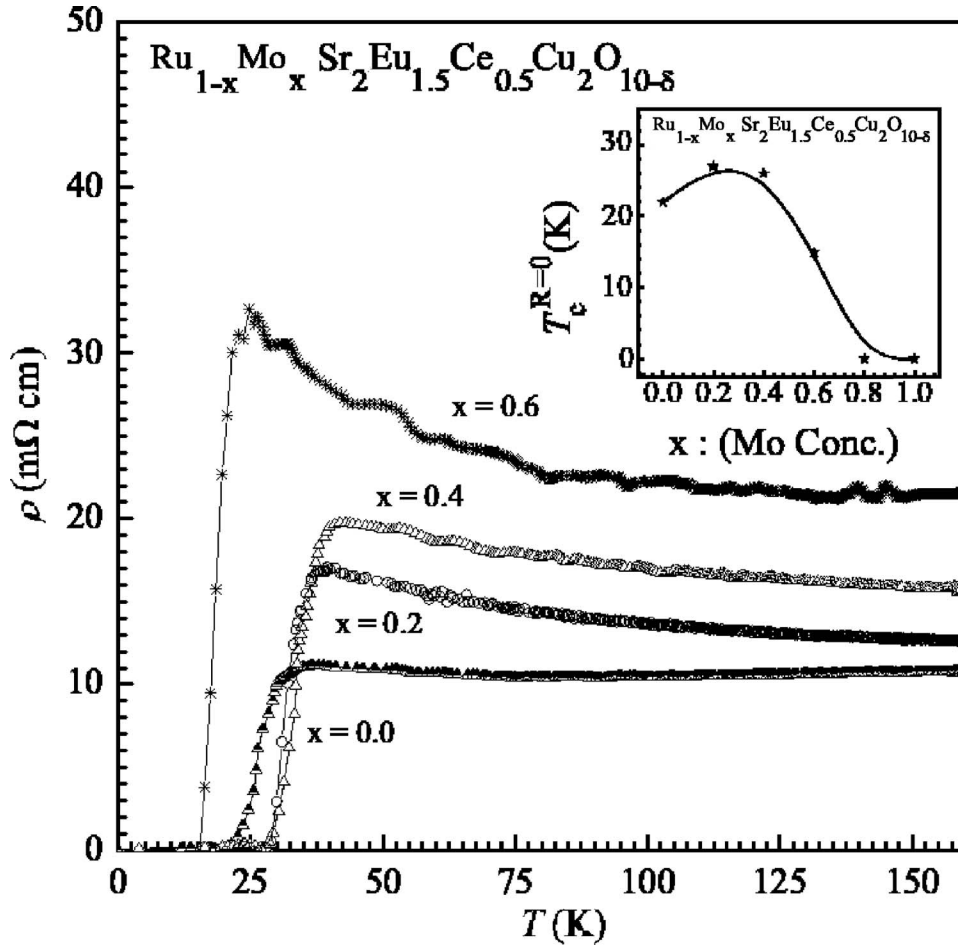


FIG. 4. ρ versus T plots for the $\text{Ru}_{1-x}\text{Mo}_x\text{Sr}_2\text{Eu}_{1.5}\text{Ce}_{0.5}\text{Cu}_2\text{O}_{10-\delta}$ system for $x=0.0, 0.2, 0.4,$ and 0.6 .

the behavior of T_c with x we consider the roles of Mo in the ruthenocuprate systems. The first thing which we notice is that Mo is nonmagnetic. So, its partial entry at the position of the Ru sites will tend to weaken the magnetic effect of the Ru moments. As has been discussed above (Fig. 2 and Table I) the magnetic effect due to the Ru moments is completely destroyed for and above $x=0.8$. In order to take account of this role of the Mo ions, we treat the effect of the weakening of the magnetic effect of Ru moments within the Abrikosov-Gorkov (AG) theory.²⁵ Since the original or weakened magnetic effect is essentially due to the presence of the Ru ions, we should consider the concentration of Ru ions formally as the concentration of magnetic impurities in the AG theory. In this sense, the concentration of the magnetic impurities will be given by $1-x$. That is to say, the system is effectively pure for $1-x=0$. Let T_{co} denote the temperature of such a pure system. Then, the transition temperature given by the AG theory must satisfy

$$T_{c,AG(x)} = \begin{cases} T_{co} & (\text{for } x = 1) \\ T_c(x=0) = 33 \text{ K} & (\text{for } x = 0). \end{cases} \quad (2)$$

The AG theory expresses the temperature $T_{c,AG}$ for a given impurity concentration $1-x$ through the expression,

$$\ln\left(\frac{T_{c,AG}}{T_{co}}\right) = \psi\left(\frac{1}{2}\right) - \psi\left(\frac{1}{2} + \frac{A(1-x)}{2T_{c,AG}}\right). \quad (3)$$

Here ψ denotes the digamma function, and the parameter A , having the dimensions of temperature, is given by

$$A = \frac{7N_F u_2^2 S(S+1)}{96\pi k_B}. \quad (4)$$

Here N_F is the density of states at the Fermi level, u_2 is the strength of the exchange interaction caused by the interaction of the carrier holes with the Ru moments, k_B is the Boltzmann constant, and S is the impurity (Ru) spin.

Equation (3) is based only on the weakening of the magnetic effect due to the Mo ions. There is another important effect of the Mo ions. In fact, in ruthenocuprates Mo ions will exist in the Mo^{+6} form, as compared to the Ru^{+5} form of the Ru ions. This means that each Mo atom adds one electron in the system, thereby reducing the concentration of the carrier holes. Since the $x=0$ ruthenocuprate appears to correspond to the underdoped regime of the cuprate superconductors (see above), and since in the underdoped regime decrease of carrier concentration amounts to suppression of T_c ,²⁶ the effect of the Mo atoms will tend to decrease T_c . Since the AG theory considers a fixed carrier concentration, such a decrease of T_c requires modification of Eq. (3). We do not go into such complications. Rather, we assume that the two effects of the variation of T_c —weakening of the FM effect and decrease of the carrier density—are separable from each other so that $T_c(x)$ may be written as

$$T_c(x) = T_{c,AG}(x)R(x). \quad (5)$$

Here the factor $R(x)$ describes the suppression of T_c due to the reduction of the carrier density, and so is defined by

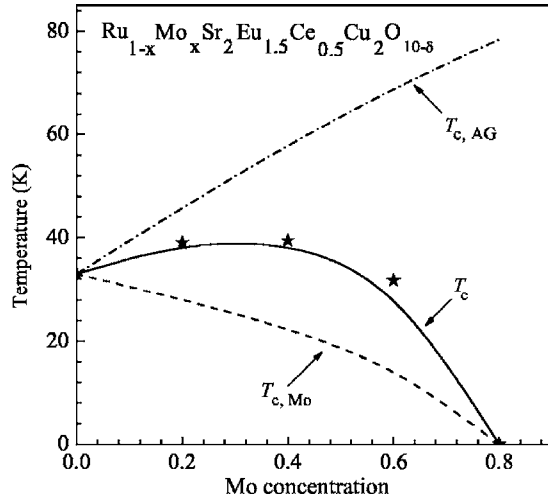


FIG. 5. Transition temperature versus x plots for the $\text{Ru}_{1-x}\text{Mo}_x\text{Sr}_2\text{Eu}_{1.5}\text{Ce}_{0.5}\text{Cu}_2\text{O}_{10-\delta}$ system. The symbol filled star shows the experimental points, and the curve marked with $T_c(x)$ show the final result of the interpretation presented in the text. The separate effects of pair breaking and the reduction of carrier concentration are shown by dashed-dotted line ($T_{c,AG}$) and dashed line ($T_{c,M0}$), respectively.

$$R(x) = \begin{cases} 1 & (\text{for } x = 0), \\ \text{decreasing} & (\text{for increasing } x), \\ 0 & (\text{for } x \geq 0.8). \end{cases} \quad (6)$$

For simplicity we consider the following form for $R(x)$;

$$R(x) = \theta(0.8 - x)[(0.8 - x)/0.8]^a. \quad (7)$$

Here $\theta(y)=1$ for $y>0$, and $\theta(y)=0$ for $y<0$. The parameter a is a phenomenological parameter. It is not difficult to see that Eq. (7) satisfies the conditions of Eq. (6).

Equations (2)–(4) and (7) provide the phenomenology of T_c variation in terms of two parameters, T_{co} and a . On the basis of calculations from these equations we have found that the resulting values of T_c agree well with the experimental data for $T_{co}=90$ K and $a=0.55$. This is shown in Fig. 5. In this figure we have also shown the separate effects due to the AG theory and reduction of carrier concentration. The curve labeled $T_{c,AG}$ shows the effect of pair breaking only, while the curve marked $T_{c,M0}$ shows the effect of carrier reduction only ($T_{c,M0}=33.0$ K). It may be noted that T_{co} is slightly less than the transition temperature of $\text{YBa}_2\text{Cu}_3\text{O}_7$. Moreover, the value of a signifies that initially the effect of the reduction of carrier concentration is relatively slower than that for the larger values of x . This is on expected lines,²⁶ and so shows

the internal consistency of the above interpretation.

IV. CONCLUDING REMARKS

We have synthesized samples of ruthenocuprate $\text{RuSr}_2\text{Eu}_{1.5}\text{Ce}_{0.5}\text{Cu}_2\text{O}_{10-\delta}$ by substituting Ru ions by the Mo ions of concentration $x=0.2, 0.4, 0.6, 0.8$, and 1.0 . The phase purity and lattice parameters of these samples are discussed on the basis of the XRD. In order to understand the effect of the Mo ions on the magnetism of the ruthenocuprate Ru-1222, we have performed measurements of magnetization (M) for different values of the applied field (H). The H -dependence of the magnetization (taken at 5 K) shows that Mo suppresses the weak FM effect of the Ru ions monotonically such that this (FM) effect is completely lost by an 80% substitution of Ru by Mo. A similar result is obtained from the values of the susceptibility at the temperature T_{ZFC}^{peak} , where weak FM starts to appear from the higher temperature side. Although the values of T_{ZFC}^{peak} is reduced drastically for all of the samples of finite Mo content, the value of T_{ZFC}^{peak} is higher for the $x=0.4$ sample than that for the $x=0.2$ sample. Another feature of the magnetic behavior is that the temperature, where AFM effect starts to appear, T_{mag} , reduces rather slowly with x . In fact, up to $x=0.6$ the value of T_{mag} has reduced from 140 to 100 K only.

We have also measured resistivity of the considered samples. Only the samples with $x=0.0, 0.2, 0.4$, and 0.6 are found to be superconducting above 12 K. The behavior of resistivity for all the superconducting samples is similar to that of the underdoped cuprate superconductors. From the ρ - T plots we have extracted the values of the transition temperature T_c . It has been found that T_c increases with x up to $x=0.4$. Thereafter T_c decreases for the $x=0.6$ sample. For the $x=0.4$ sample, the value of T_c becomes 40 K as against the value of 33 K found for the $x=0$ sample. We have made an attempt to interpret the observed variation of T_c with x by combining two different roles of the Mo atoms. The first is the weakening of the FM effect of the Ru moments. This effect is expressed through the AG theory. The second role of the Mo atoms is the reduction of the carrier concentration. This feature is modeled empirically, and a good agreement has been achieved with the experimental data.

ACKNOWLEDGMENT

The authors from the National Physical Laboratory appreciate the interest and advice of Professor Vikram Kumar in the present work. One of us (A.V.N.) thanks the University of Turku for providing research facilities and for the invitation for the present visit.

*Email address: awana@mail.nplindia.ernet.in

†Also at UGCA-DAE Consortium for Scientific Research, University Campus, Khandwa Road, Indore-452017, MP, India.

¹V. L. Ginzburg, Zh. Eksp. Teor. Fiz. **31**, 202 (1956), [Sov. Phys. JETP **4**, 153 (1957)].

²B. T. Mathias, H. Suhl, and E. Corenzwit, Phys. Rev. Lett. **1**, 449 (1958).

³S. K. Sinha, G. W. Crabtree, D. G. Hinks, and H. Mook, Phys. Rev. Lett. **48**, 950 (1982).

⁴Review article by M. B. Maple, Physica B **215**, 110 (1995).

- ⁵S. S. Saxena, P. Agarwal, K. Ahilan, F. M. Groshe, R. K. W. Haselwimmer, M. J. Steiner, E. Pugh, I. R. Walker, S. R. Julian, P. Monthoux, G. G. Lonzarich, A. Huxley, I. Sheikin, D. Braithwaite, and J. Floquet, *Nature (London)* **406**, 587 (2000).
- ⁶C. Pfleiderer, M. Uhlarz, S. M. Hayden, R. Vollmer, H. Von Lohneysen, N. R. Bernhoeft, and G. G. Lonzarich, *Nature (London)* **412**, 58 (2001).
- ⁷I. Felner, U. Asaf, Y. Levi, and O. Millo, *Phys. Rev. B* **55**, R3374 (1997).
- ⁸C. Bernhard, J. L. Tallon, C. Niedermayer, T. Blasius, A. Golnik, E. Brücher, R. K. Kremer, D. R. Noakes, C. E. Stronack, and E. J. Asnaldo, *Phys. Rev. B* **59**, 14099 (1999).
- ⁹L. Bauernfeind, W. Widder, and H. F. Braun, *Physica C* **254**, 151 (1995).
- ¹⁰J. Akimitsu, H. Kawano-Furukawa, and H. Yoshizawa, *J. Phys. Soc. Jpn.* **70**, 333 (2001).
- ¹¹I. Felner, E. B. Sonin, T. Machi, and N. Koshizuka, *Physica C* **341**, 715 (2000).
- ¹²C. W. Chu, Y. Y. Xue, S. Tsui, J. Cmaidalka, A. K. Heilman, B. Lorenz, and R. L. Meng, *Physica C* **335**, 231 (2000).
- ¹³V. P. S. Awana, S. Ichihara, J. Narppinen, H. Yamauchi, Jinbo Yang, W. B. Yelon, W. J. James, and S. K. Malik, *J. Appl. Phys.* **91**, 8501 (2002).
- ¹⁴A. T. Matveev, A. N. Maljuk, A. Kulakov, C. T. Lin, and H.-U. Habermeier, *Physica C* **407**, 139 (2004).
- ¹⁵V. P. S. Awana, T. Kawashima, and E. Takayama-Muromachi, *Phys. Rev. B* **67**, 172502 (2003).
- ¹⁶G. M. Kuzmicheva, A. S. Andreenko, I. E. Kostyleva, A. Zalevski, and J. Warchulska, *Physica C* **400**, 7 (2003).
- ¹⁷I. Felner and U. Asaf, *Physica C* **292**, 97 (1997).
- ¹⁸H. K. Lee and G. V. M. Williams, *Physica C* **415**, 172 (2004).
- ¹⁹I. Felner and E. Galstyan, *Phys. Rev. B* **68**, 064507 (2003).
- ²⁰R. Lal, V. P. S. Awana, H. Kishan, Rajeev Rawat, V. Ganesan, A. V. Narlikar, M. Peurla, and R. Laiho (unpublished).
- ²¹C. A. Cardoso, F. M. Araujo-Moreira, V. P. Awana, E. Takayama-Muromachi, O. F. de Lima, H. Yamauchi, and M. Karppinen, *Phys. Rev. B* **67**, 020407(R) (2003).
- ²²J. Dzyaloshinsky, *J. Phys. Chem. Solids* **4**, 241 (1958).
- ²³H. Takagi, B. Batlogg, H. L. Kao, J. Kwo, R. J. Cava, J. J. Krajewski, and W. F. Peck, Jr., *Phys. Rev. Lett.* **69**, 2975 (1992).
- ²⁴M. S. Osofsky, R. J. Soulen, Jr., S. A. Wolf, J. M. Broto, H. Rakoto, J. C. Ousset, G. Coffe, S. Askenazy, P. Pari, I. Bozovic, J. N. Eckstein, G. F. Virshup *et al.*, *Phys. Rev. Lett.* **71**, 2315 (1993); A. P. Mackenzie, S. R. Julian, G. G. Lonzarich, A. Carrington, S. D. Hughes, R. S. Liu, and D. C. Sinclair, *ibid.* **71**, 1238 (1993); A. S. Alexendrov, N. Zavaritsky, W. Y. Liang, and P. L. Nevsky, *ibid.* **76**, 983 (1996).
- ²⁵A. A. Abrikosov and L. P. Gorkov, *Zh. Eksp. Teor. Fiz.* **39**, 1781 (1960) [*Sov. Phys. JETP* **12**, 1243 (1961)].
- ²⁶Hunabo Zhang and Hirasho Sato, *Phys. Rev. Lett.* **70**, 1697 (1993).