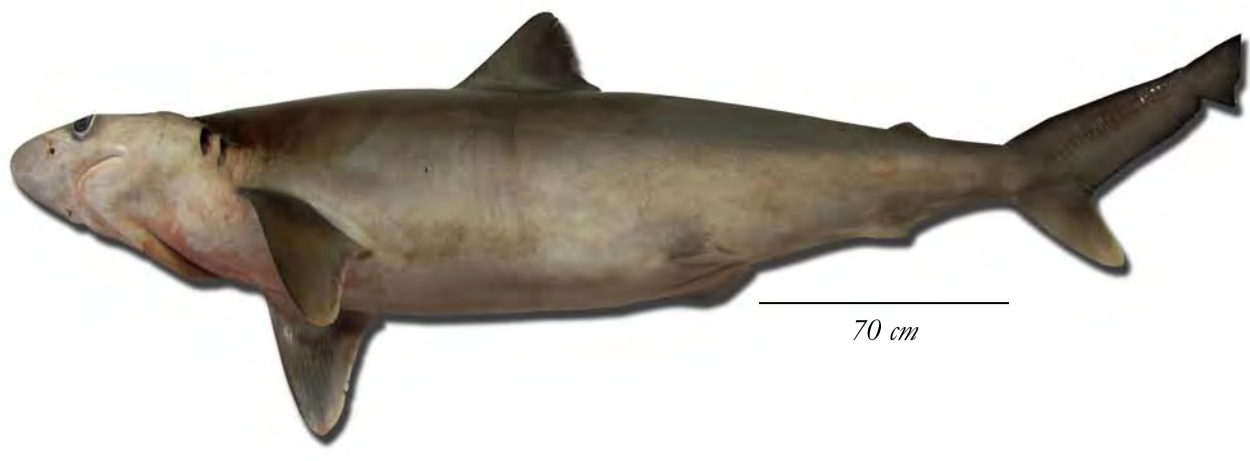
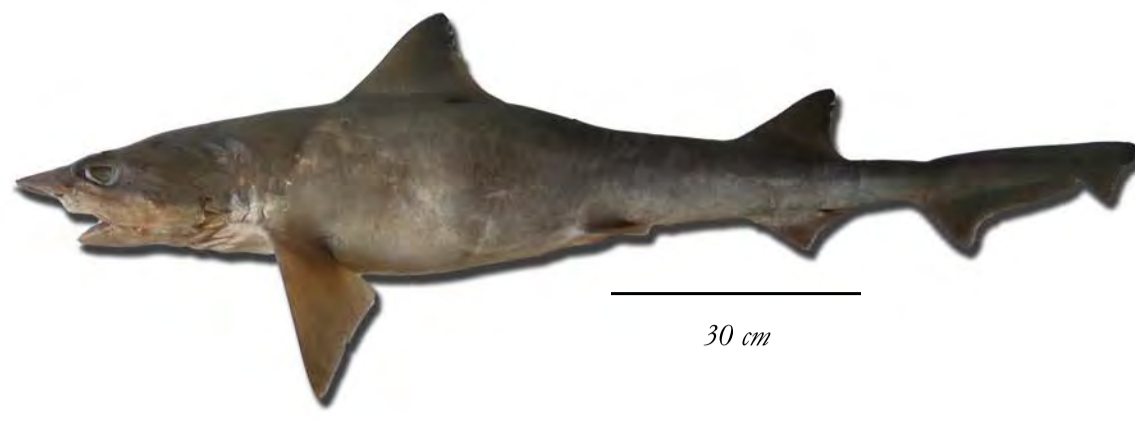


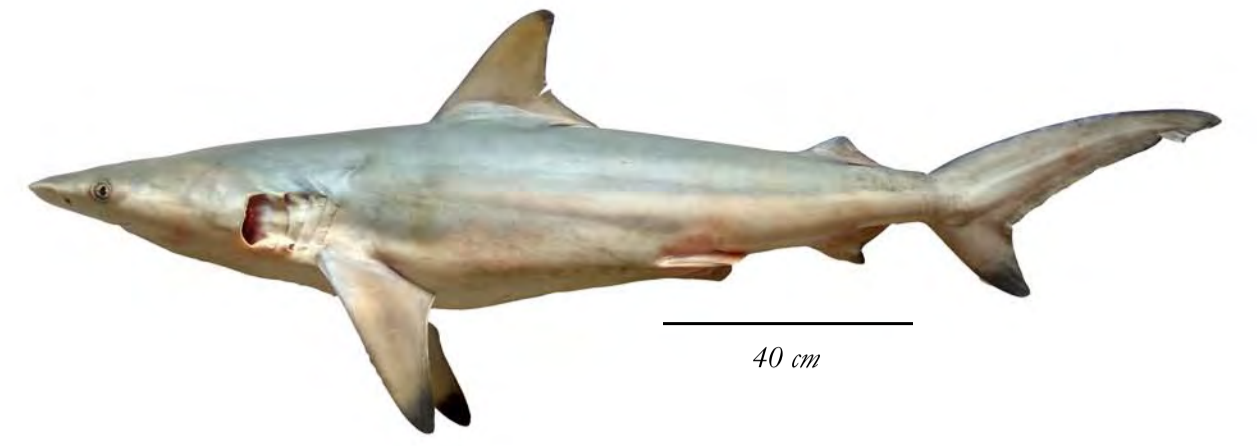
COMMERCIALLY IMPORTANT SHARKS OF GUJARAT



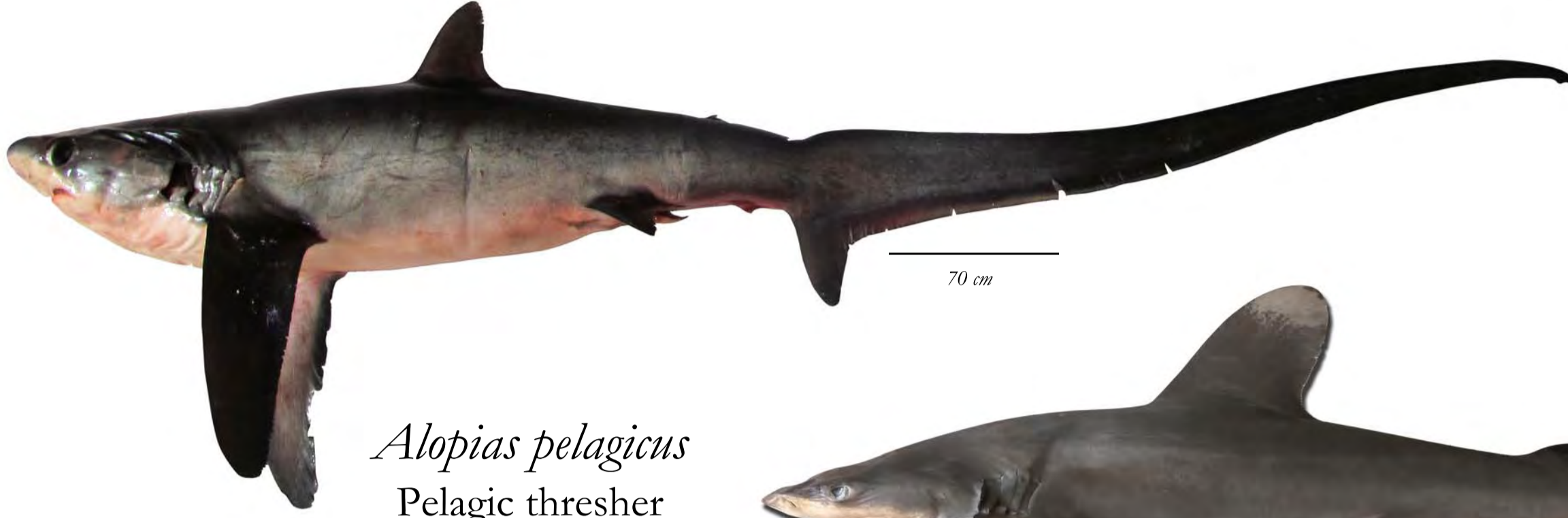
Carcharbinus macloti
Hardnose shark



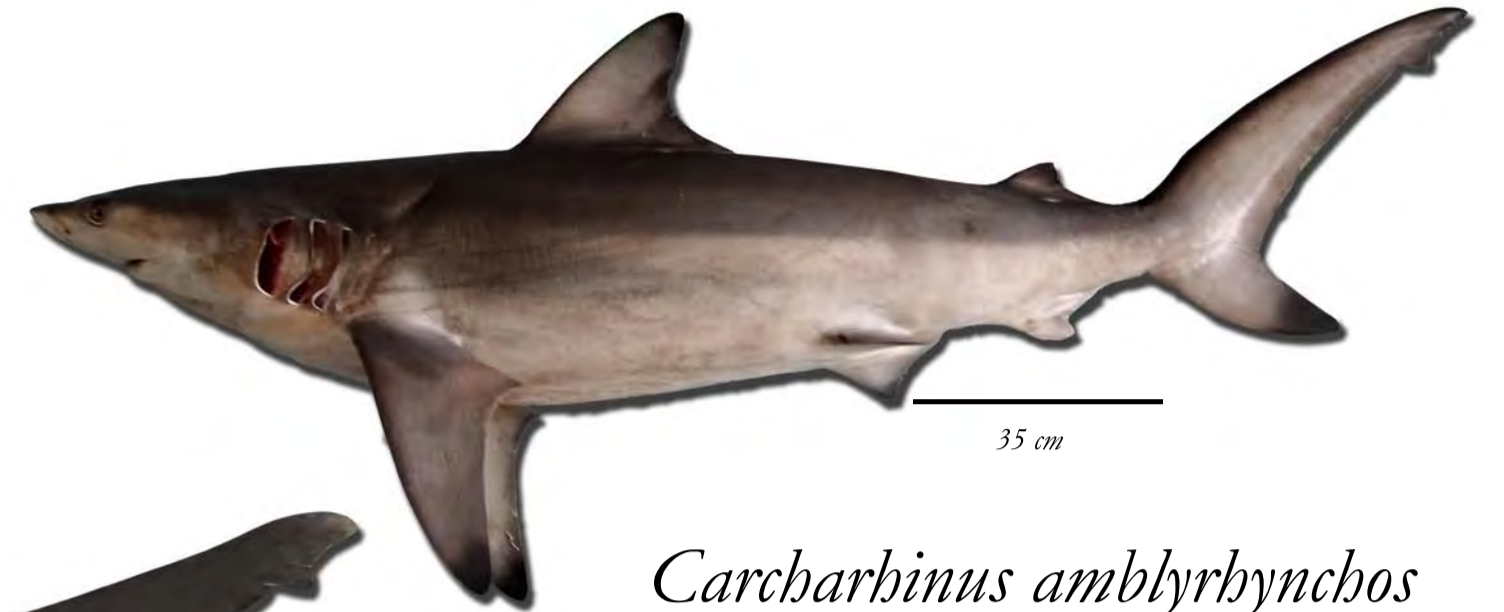
Mustelus mosis
Arabian smooth-hound



Carcharbinus limbatus
Blacktip shark



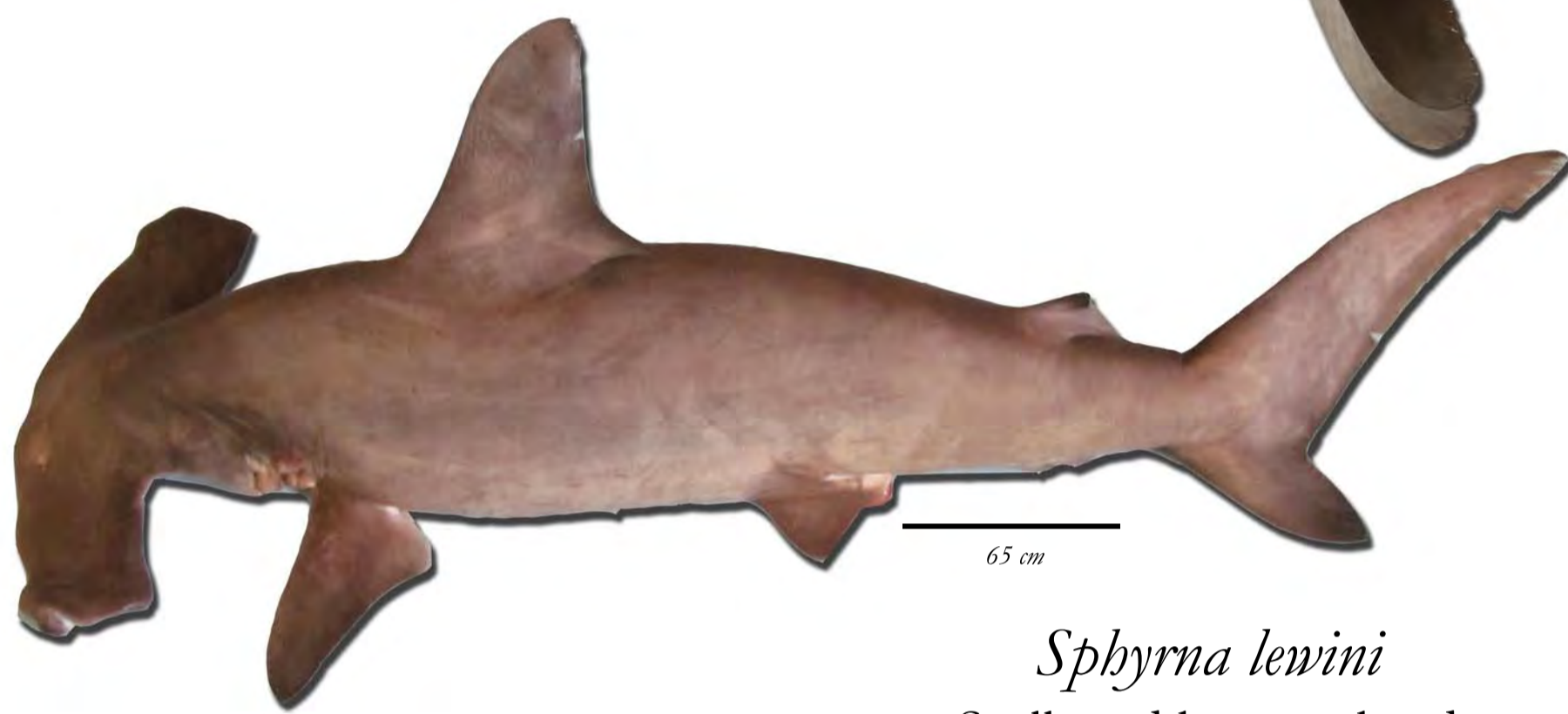
Alopias pelagicus
Pelagic thresher



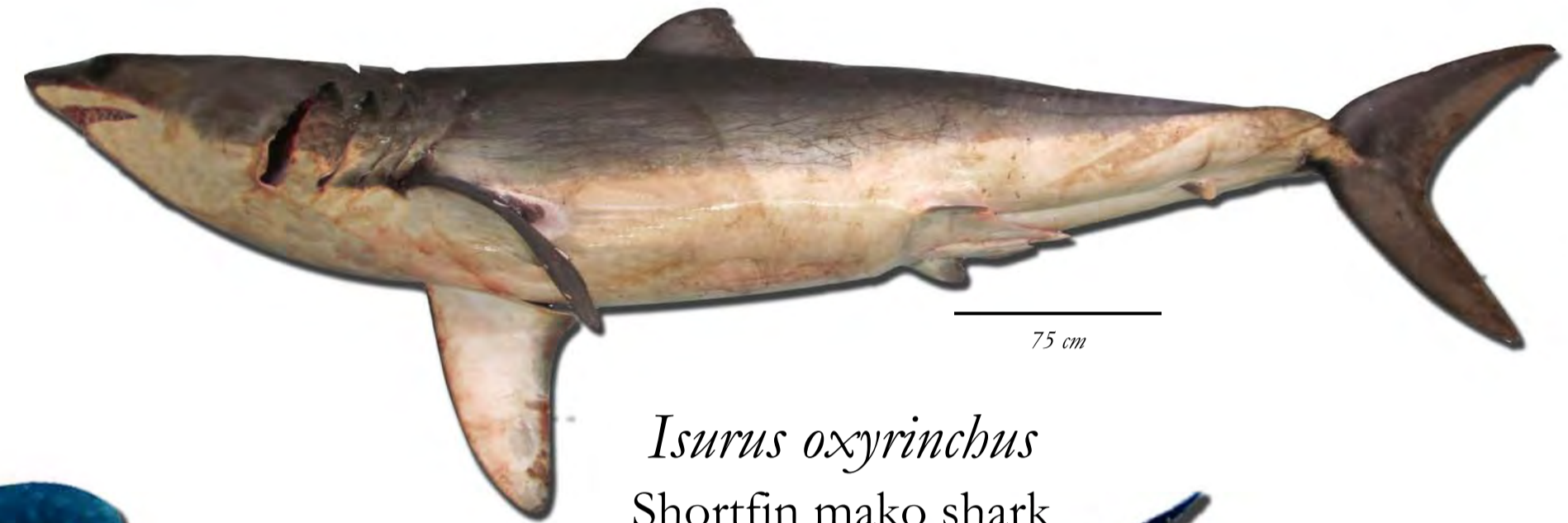
Carcharbinus amblyrhynchos
Grey reef shark



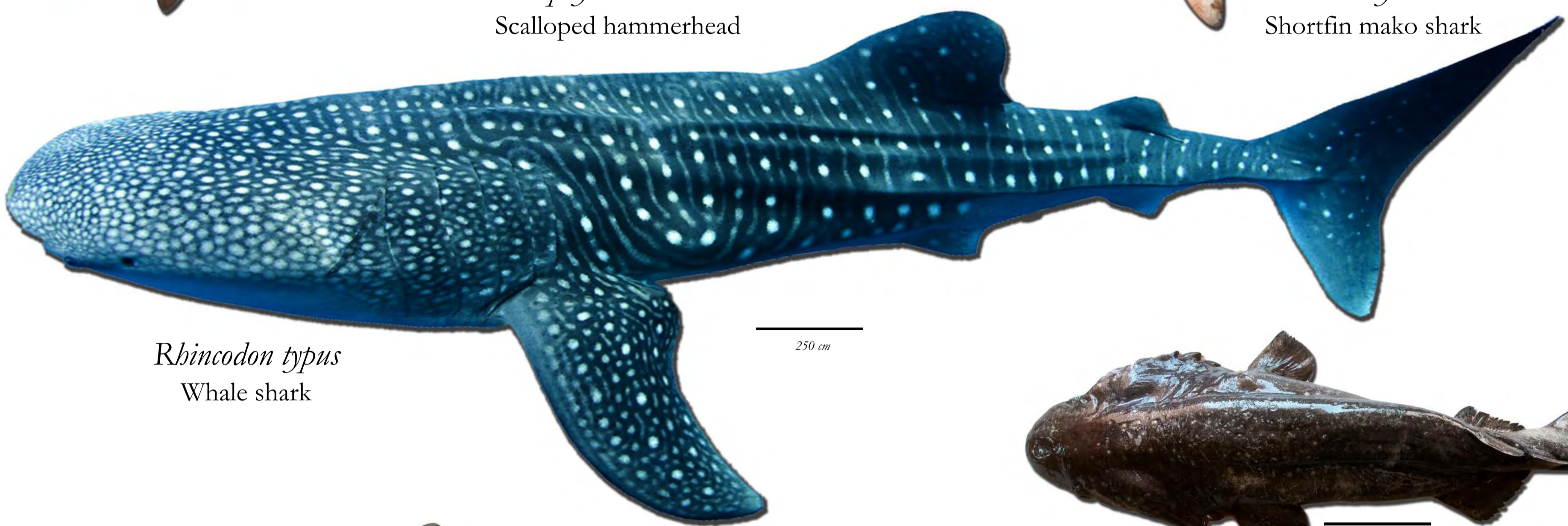
Carcharbinus longimanus
Oceanic whitetip shark



Sphyrna lewini
Scalloped hammerhead



Isurus oxyrinchus
Shortfin mako shark



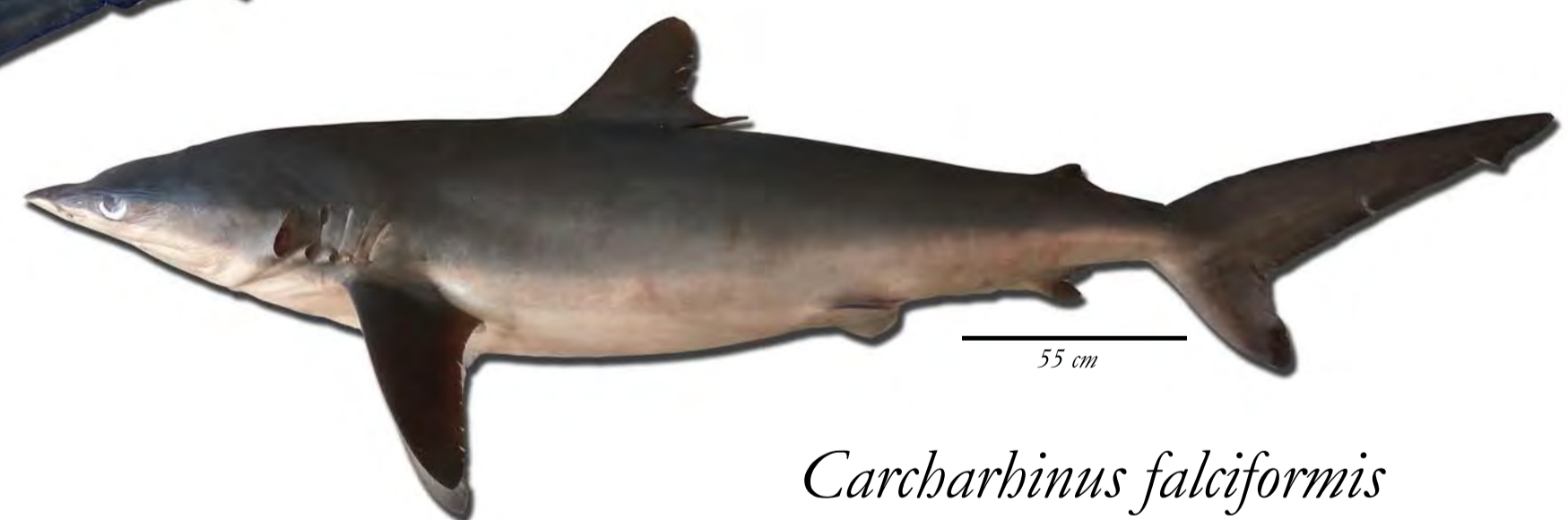
Rhincodon typus
Whale shark



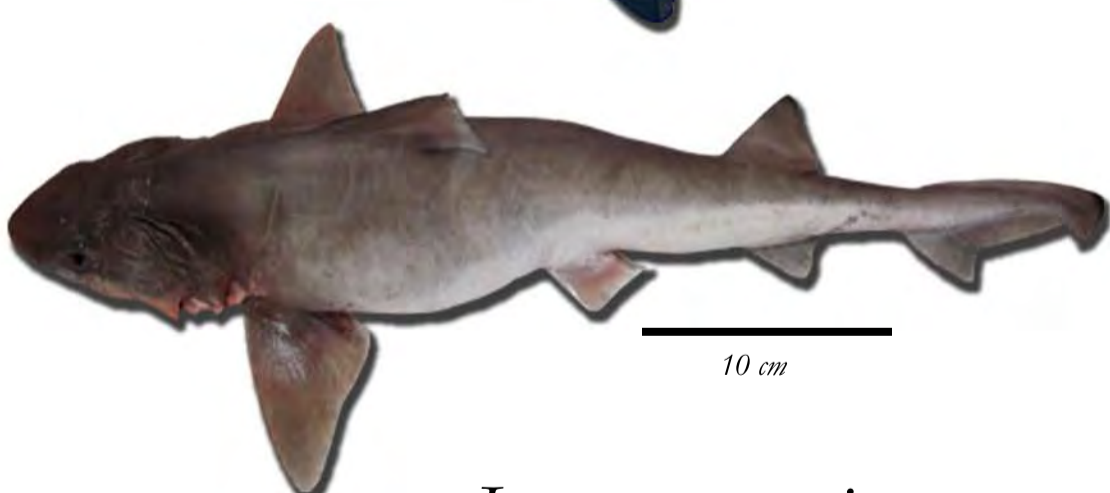
Echinorhinus brucus
Bramble shark



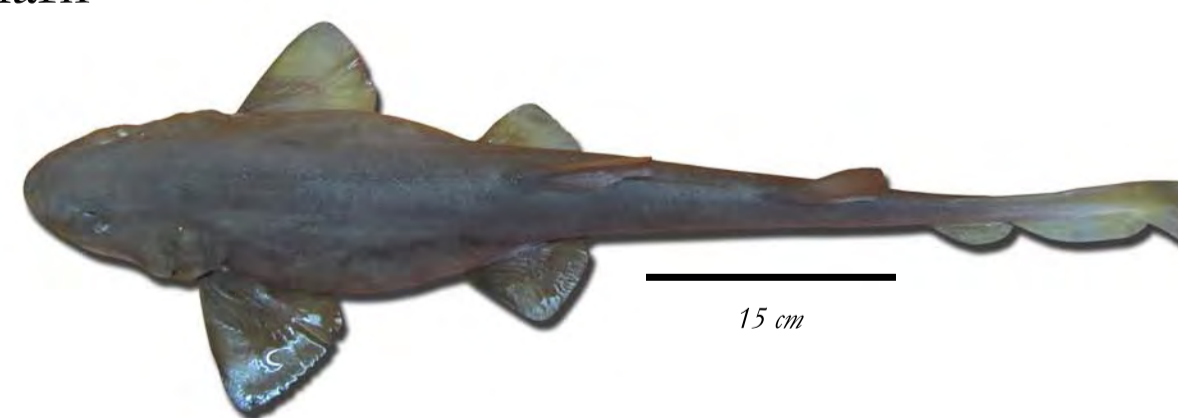
Galeocerdo cuvier
Tiger shark



Carcharbinus falciformis
Silky shark



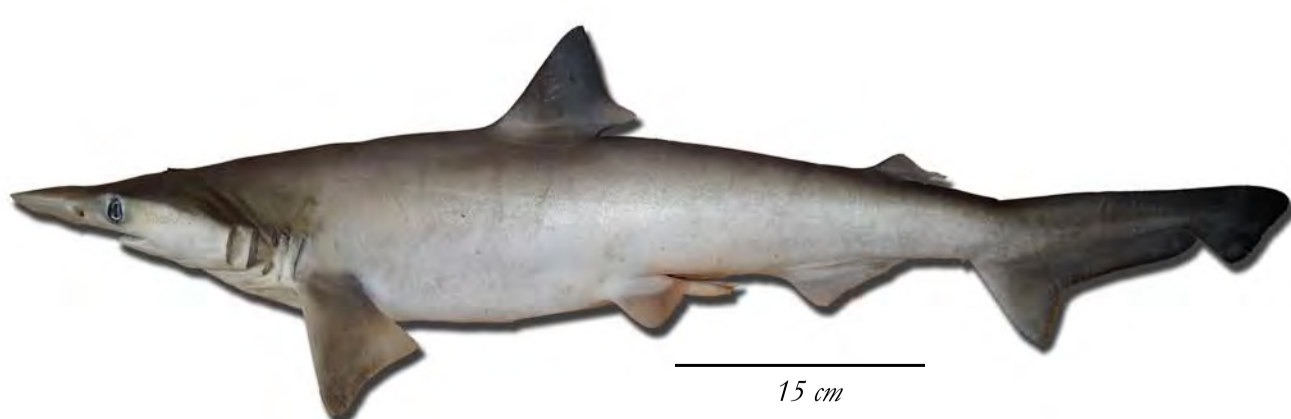
Iago omanensis
Bigeye houndshark



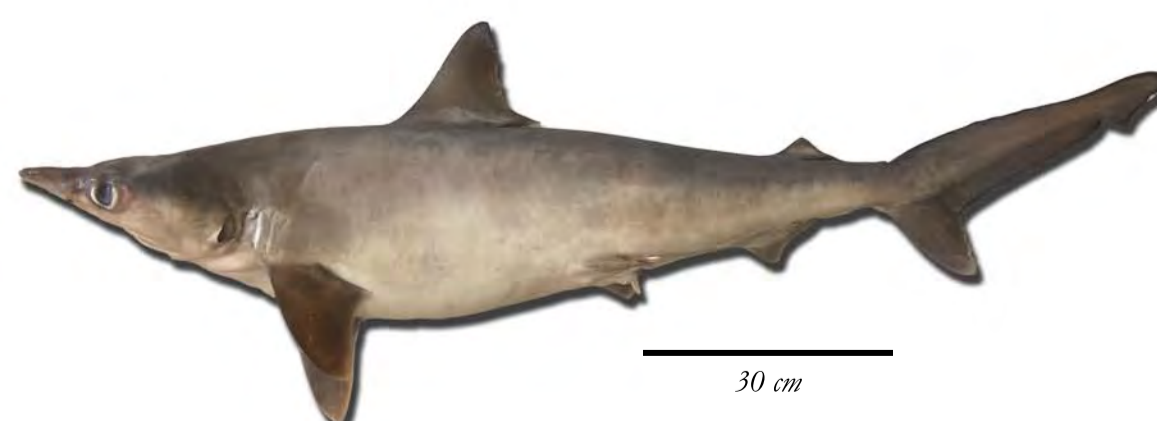
Chiloscyllium arabicum
Arabian carpetshark



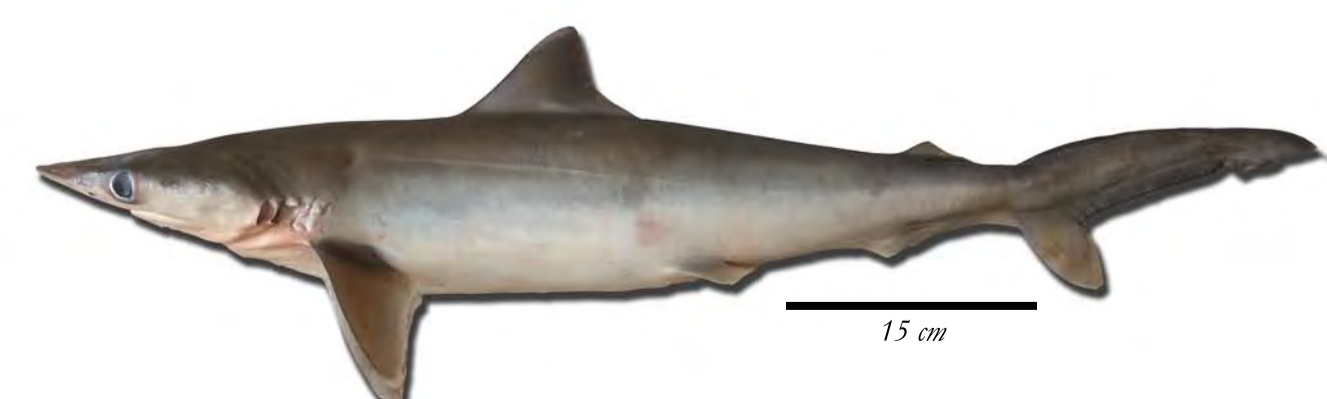
Chiloscyllium griseum
Grey bamboo shark



Scoliodon laticaudus
Spadenose shark



Rhizoprionodon acutus
Milk shark



Rhizoprionodon oligolinx
Grey sharpnose shark

Prepared by: Swatipriyanka Sen Dash, Bharadiya Sangita A., Gyanaranjan Dash, Rajesh Kumar Pradhan, Mohammed Koya K., Vinaya Kumar Vase, Sreenath K.R., Divu D., Kapil Sukhdhane and Jayshree K. Gohel.

Veraval Regional Centre, Central Marine Fisheries Research Institute, P.B. No.17, Matsya Bhavan, Bhidiya, Veraval-362 269, Gujarat, India

Sample Location: Gujarat

Published by: A. Gopalakrishnan, Director, CMFRI

CMFRI Poster No. 33/2017