

## CLINICAL TRIALS AND OBSERVATIONS

## Therapy reduction in patients with Down syndrome and myeloid leukemia: the international ML-DS 2006 trial

Madita Uffmann,<sup>1</sup> Mareike Rasche,<sup>2</sup> Martin Zimmermann,<sup>1</sup> Christine von Neuhoff,<sup>2</sup> Ursula Creutzig,<sup>1</sup> Michael Dworzak,<sup>3</sup> Lenie Scheffers,<sup>4</sup> Henrik Hasle,<sup>5,\*</sup> C. Michel Zwaan,<sup>4,6,\*</sup> Dirk Reinhardt,<sup>2,\*</sup> and Jan-Henning Klusmann<sup>1,\*</sup>

<sup>1</sup>Department of Pediatric Hematology and Oncology, Hannover Medical School, Hannover, Germany; <sup>2</sup>Pediatric Hematology and Oncology, Pediatrics III, Essen University Hospital, Essen, Germany; <sup>3</sup>Department of Pediatrics, St. Anna Children's Hospital/Children's Cancer Research Institute, Medical University of Vienna, Vienna, Austria; <sup>4</sup>Dutch Childhood Oncology Group, The Hague, The Netherlands; <sup>5</sup>Department of Pediatrics, Aarhus University Hospital, Skejby, Denmark; and <sup>6</sup>Department of Pediatric Oncology/Hematology, Erasmus Medical Center/Sophia Children's Hospital, Rotterdam, The Netherlands

## Key Points

- Reducing therapy intensity in the ML-DS 2006 trial did not impair the excellent prognosis in ML-DS compared with the historical control.
- Early treatment response and gain of chromosome 8 are independent prognostic factors.

Children with myeloid leukemia associated with Down syndrome (ML-DS) have superior outcome compared with non-DS patients, but suffer from higher constitutional cytotoxic drug susceptibility. We analyzed the outcome of 170 pediatric patients with ML-DS enrolled in the prospective, multicenter, open-label, nonrandomized ML-DS 2006 trial by Nordic Society for Pediatric Hematology and Oncology (NOPHO), Dutch Childhood Oncology Group (DCOG), and Acute Myeloid Leukemia–Berlin–Frankfurt–Münster (AML-BFM) study group. Compared with the historical control arm (reduced-intensity protocol for ML-DS patients from the AML-BFM 98 trial), treatment intensity was reduced by lowering the cumulative dose of etoposide (950 to 450 mg/m<sup>2</sup>) and intrathecal central nervous system prophylaxis while omitting maintenance therapy. Still, 5-year overall survival (89% ± 3% vs 90% ± 4%;  $P_{\log\text{-rank}} = .64$ ), event-free survival (EFS; 87% ± 3% vs 89% ± 4%;  $P_{\log\text{-rank}} = .71$ ), and cumulative incidence of relapse/nonresponse (CIR/NR; 6% ± 3% vs 6% ± 2%;  $P_{\text{Gray}} = .03$ ) did not significantly differ between the ML-DS 2006 trial and the historical control arm. Poor early treatment response

(5-year EFS, 58% ± 16% vs 88% ± 3%;  $P_{\log\text{-rank}} = .0008$ ) and gain of chromosome 8 (CIR/NR, 16% ± 7% vs 3% ± 2%,  $P_{\text{Gray}} = .02$ ; 5-year EFS, 73% ± 8% vs 91% ± 4%,  $P_{\log\text{-rank}} = .018$ ) were identified as independent prognostic factors predicting a worse EFS. Five of 7 relapsed patients (71%) with cytogenetic data had trisomy 8. Our study reveals prognostic markers for children with ML-DS and illustrates that reducing therapy did not impair excellent outcome. The trial was registered at EudraCT as #2007-006219-2. (*Blood*. 2017;129(25):3314-3321)

## Introduction

Children with Down syndrome (DS) have a 150-fold increased risk of myeloid leukemia (ML) before the age of 5 years.<sup>1</sup> The majority of the reported cases with ML associated with DS (ML-DS) show a predominance of megakaryoblasts, corresponding to megakaryoblastic leukemia (AMKL) or French-American-British (FAB)-type M7 in non-DS patients.<sup>2-4</sup> ML-DS can be preceded by a period of transient abnormal myelopoiesis (TAM).<sup>5</sup> Both ML-DS and TAM are associated with mutations of the hematopoietic transcription factor GATA1,<sup>6</sup> which is causative during leukemogenesis.<sup>7</sup>

Historically, outcome in children with ML-DS was thought to be poor.<sup>8</sup> To date, excellent cure rates have been achieved for ML-DS using dose-reduced treatment protocols without hematopoietic stem cell transplantation.<sup>9-15</sup> The reduced-intensity arm for ML-DS of the Acute Myeloid Leukemia–Berlin–Frankfurt–Münster (AML-BFM) 98 trial consisted of 4 courses of chemotherapy, containing cytarabine, idarubicin, etoposide, or mitoxantrone, and resulted in event-free survival (EFS) after 5 years of 89%.<sup>9</sup> This is in contrast to a 5-year EFS

of 54% in non-DS children with AML FAB M7 (non-DS-AMKL).<sup>16</sup> The excellent response was attributed to the enhanced drug sensitivity of the ML-DS blasts, especially to cytarabine and anthracyclines.<sup>17,18</sup> Still, despite reduced intensity, many patients suffer from therapy-associated toxicity.<sup>9</sup> This determines therapy-related mortality (TRM) as the main cause of death in this cohort of patients.<sup>9-15</sup>

Different international study protocols for ML-DS vary in their treatment intensity and drug scheduling.<sup>9-15</sup> Whereas recent North American and European studies use high doses of anthracyclines and cytarabine,<sup>9-13</sup> Japanese studies achieved comparable survival rates using less intense treatment regimens.<sup>14,15</sup> In contrast, the prognosis of relapsed ML-DS patients is extremely poor.<sup>12,19,20</sup> This means that ML-DS treatment schemata have to particularly strive for the balance between appropriate chemotherapy dosage to avoid relapses and treatment-related toxicity. Despite substantial efforts, clear prognostic factors that identify those patients at high risk for relapse remain elusive precluding a risk-adapted treatment strategy.<sup>21</sup>

Submitted 27 January 2017; accepted 29 March 2017. Prepublished online as *Blood* First Edition paper, 11 April 2017; DOI 10.1182/blood-2017-01-765057.

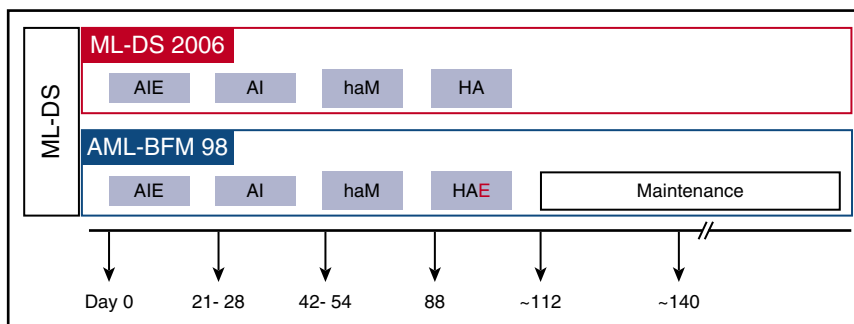
\*H.H., C.M.Z., D.R., and J.-H.K. contributed equally to this work.

The online version of this article contains a data supplement.

There is an Inside *Blood* Commentary on this article in this issue.

The publication costs of this article were defrayed in part by page charge payment. Therefore, and solely to indicate this fact, this article is hereby marked "advertisement" in accordance with 18 USC section 1734.

© 2017 by The American Society of Hematology



**Figure 1. ML-DS 2006 protocol compared with the historical control arm (AML-BFM 98).** Scheme of the different study protocols as indicated. ML-DS 2006: AIE (cytarabine 100 mg/m<sup>2</sup> per day [days 1-2] and 100 mg/m<sup>2</sup> per 12 hours [days 3-8], idarubicin 8 mg/m<sup>2</sup> per day [days 3, 5, and 7], and etoposide 150 mg/m<sup>2</sup> per day [days 6-8]); AI (cytarabine 500 mg/m<sup>2</sup> per day [days 1-4] and idarubicin 5 mg/m<sup>2</sup> per day [days 3 and 5]); haM (cytarabine 1 g/m<sup>2</sup> per 12 hours [days 1-3] and mitoxantrone 7 mg/m<sup>2</sup> per day [days 3-4]); HA (high-dose cytarabine 3 g/m<sup>2</sup> per 12 hours [days 1-3]). The cumulative doses were 27 400 mg/m<sup>2</sup> cytarabine, 450 mg/m<sup>2</sup> etoposide, 34 mg/m<sup>2</sup> idarubicin, and 14 mg/m<sup>2</sup> mitoxantrone. Chemotherapy for children younger than 12 months of age, or weighing <12 kg, was calculated based on body weight. In addition, patients received cytarabine intrathecally at the start of each treatment block (4 doses in total, 20-40 mg per dose adapted to age) as a CNS prophylaxis. AML-BFM 98 (reduced-intensity arm for children with ML-DS; historical control arm): AIE (cytarabine 100 mg/m<sup>2</sup> per day [days 1-2] and 100 mg/m<sup>2</sup> per 12 hours [days 3-8], idarubicin 8 mg/m<sup>2</sup> per day [days 3, 5, and 7] and etoposide 150 mg/m<sup>2</sup> per day [days 6-8]); AI (cytarabine 500 mg/m<sup>2</sup> per day [days 1-4] and idarubicin 5 mg/m<sup>2</sup> per day [days 3 and 5]); haM (cytarabine 1 g/m<sup>2</sup> per 12 hours [days 1-3] and mitoxantrone 7 mg/m<sup>2</sup> per day [days 3-4]); HAE (high-dose cytarabine 3 g/m<sup>2</sup> per 12 hours [days 1-3] and etoposide 125 mg/m<sup>2</sup> per day [days 2-5]). Maintenance therapy until 1.5 years after start of induction therapy was thioguanine daily 40 mg/m<sup>2</sup> per os (p.o.) and cytarabine 40 mg/m<sup>2</sup> subcutaneously (s.c.) every 4 weeks on 4 consecutive days. The cumulative doses were ~29 400 mg/m<sup>2</sup> cytarabine, 950 mg/m<sup>2</sup> etoposide, 34 mg/m<sup>2</sup> idarubicin, and 14 mg/m<sup>2</sup> mitoxantrone.

Here, we report the outcome of 170 pediatric patients with ML-DS enrolled in the Myeloid Leukemia Down Syndrome 2006 (ML-DS 2006) trial, conducted by the Nordic Society for Pediatric Hematology and Oncology (NOPHO), Dutch Childhood Oncology Group (DCOG), and AML-BFM study group. The protocol was based on the reduced-intensity arm for children with ML-DS in the AML-BFM 98 trial and was further intensity-reduced by excluding etoposide from the consolidation phase (reducing the cumulative dose from 950 mg/m<sup>2</sup> to 450 mg/m<sup>2</sup>), administering 4 instead of 11 doses of intrathecal central nervous system (CNS) prophylaxis (cytarabine 20-40 mg), and excluding maintenance therapy.<sup>9</sup> The aim of the trial was to assure the high EFS while further reducing the risk of treatment-related toxicity.

The diagnoses of the FAB M0 and M7 subtypes required confirmation by immunologic methods.<sup>3,23,24</sup> In brief, for the diagnosis of FAB, M0 blasts had to be negative for myeloperoxidase activity and for B- and T-cell markers (except CD7) and show expression of myeloid antigens (CD117, CD13, or CD33). Diagnosis of FAB M7 was considered when blasts were negative for myeloperoxidase activity and had specific megakaryocytic markers (CD41, CD42b, and/or CD61) without any B- or T-cell markers (except CD7). Surface antigen expression was considered positive if at least 20% of blasts showed positive labeling.

Treatment of children with ML-DS in the AML-BFM 98 trial (historical control arm) consisted of 4 cycles of polychemotherapy followed by maintenance therapy as depicted in Figure 1. The AML-BFM 98 trial was opened from August 1998 to July 2003 and recruited 67 children with ML-DS (historical control arm) as previously described in detail.<sup>9</sup>

## Methods

### Patients

The ML-DS 2006 (EurdraCT #2007-006219-22) is a multicenter, open-label, nonrandomized trial running in Germany, Austria, Switzerland, the Czech Republic (BFM), Scandinavia (NOPHO), and The Netherlands (DCOG). It was opened on January 1, 2007 and closed on August 30, 2015. The final protocols were approved by the local ethic committees according to national laws and regulations. The trial was carried out according to the Declaration of Helsinki, the principles of Good Clinical Practice and Directive 2001/20/EC of the European Parliament and of the Council of April 4, 2001.

Patients with ML-DS with evidence of megakaryoblasts or undifferentiated blasts, confirmed by morphology and immunophenotyping (including CD34, CD117, CD7, CD13, CD33, CD15, CD36, CD56, CD41, CD42b, CD61) in the bone marrow (BM), peripheral blood, or trephine biopsy, between 6 months and 4 years were eligible for participation after legal written informed consent of the parents/custodians. Immunophenotyping was done and centrally reviewed by each collaborative study group (AML-BFM, DCOG, NOPHO). The AML-BFM and DCOG group performed central review of morphology. Patients older than 4 years of age and younger than 18 years were included if a *GATA1* mutation was detected. Independent of age, DS patients with AML FAB M1-M5 were not eligible for the reduced-intensity ML-DS 2006 protocol as those cases were suspected to represent rare sporadic acute myeloid leukemia (AML) occurring in patients with DS with a different underlying biology and with a different treatment response compared with ML-DS.<sup>22</sup> The World Health Organization (WHO) and FAB classifications were used for the initial diagnosis of AML.<sup>2,3</sup>

### Treatment plan and study design

Treatment consisted of 4 cycles of polychemotherapy as depicted in Figure 1. A good early response was defined as <5% blasts in the BM at the start of the second block. After every course, toxicity was evaluated using the National Cancer Institute (NCI) Common Terminology Criteria for Adverse Events v3.0 (CTCAE v3.0). The protocol required that each course should only be started if the child is in a good general condition without clinical signs of an infection, mucositis, or fever and with recovery of blood counts (neutrophil count, >1 × 10<sup>9</sup>/L; and platelets, >80 × 10<sup>9</sup>/L).

No recommendations for antibiotic or antifungal prophylaxis were made by the study protocol.

The primary objective of the ML-DS 2006 trial was to achieve a 5-year overall survival (OS) of 85% in 150 recruited patients with a standard error <5%. The secondary objectives were to reduce toxicity without impairment of outcome and identify prognostic factors (cytogenetics, clinical parameters at diagnosis, *GATA1* status, and treatment response assessed by morphology prior to the commencement of each course of chemotherapy) concerning the risk of relapse, toxicity, and poor outcome. Therefore, the end points of the trial were response rate (complete remission [CR]), EFS, disease-free survival, OS, and TRM. Interim analysis of response rate, frequency of relapse, and severe adverse events was performed after inclusion of 50 and 100 patients by the data monitoring committee. The criteria to close the protocol were >12 of 24 relapses or 10 of 20 deaths after inclusion of the first 50 of 100 patients, respectively.

### Cytogenetic and molecular genetic analyses

Cytogenetic and molecular genetic analyses (including *GATA1* sequencing) were done and centrally reviewed by each study group (AML-BFM, DCOG,

NOPHO). For the AML-BFM group, the reference laboratories performed and centrally reviewed cytogenetic (Hannover, Giessen, Germany) and molecular genetic analyses (Essen, Hannover, Germany) as previously described.<sup>6,24</sup> For the DCOG, cytogenetic analyses were done by the university cytogenetic laboratories in The Netherlands and reviewed by a national cytogenetic review panel. Molecular genetic analyses were performed at the Erasmus MC (Rotterdam, The Netherlands).<sup>6</sup> For NOPHO, cytogenetic analyses were done by the university cytogenetic laboratories in the member countries and reviewed by the NOPHO cytogenetic review panel as previously described.<sup>25</sup> *GATA1* analyses were performed by the Weatherall Institute of Molecular Medicine (Oxford, United Kingdom).<sup>6</sup> Complete karyotypes were described according to the International System of Human Cytogenetic Nomenclature (ISCN).<sup>26</sup>

## Statistics

CR was defined by fulfillment of the Cancer and Leukemia Group B (CALGB) criteria,<sup>27</sup> early death (ED) being death before or within the first 6 weeks of treatment. EFS was defined as time from diagnosis to the first event or last follow-up. Events were death from any cause, failure to achieve remission, relapse, and secondary malignancy. Failure to achieve remission was considered as an event on day 0. Survival was defined as the time of diagnosis to death from any cause or last follow-up.

The Kaplan-Meier method was used to estimate survival rates.<sup>28</sup> Differences were compared with the 2-sided log-rank test.<sup>29</sup> Standard errors (SEs) were obtained using the Greenwood formula. Cumulative incidence of relapse/nonresponse (CIR/NR) and death in CR were calculated by the method of Kalbfleisch and Prentice and compared with the Gray test. The Cox proportional hazards model has been used to obtain the estimates and the 95% confidence interval (CI) of the relative risk for prognostic factors.<sup>30</sup> Differences in the distribution of individual parameters among patient subsets were analyzed using the  $\chi^2$  test or Fisher exact test for categorized variables and the Mann-Whitney *U* test for continuous variables.

## Results

### Patient characteristics

The population-based ML-DS 2006 trial enrolled 170 patients with de novo ML-DS between 2006 and 2015. Patient characteristics are summarized in Table 1 and are compared with the historical control arm (ML-DS children from the AML-BFM 98 trial; *N* = 67).<sup>9</sup> The median follow-up for ML-DS 2006 was 4.0 years, and 9.6 years for the historical control arm.

The median age at diagnosis was 1.6 years and the median white blood cell (WBC) count was  $5.1 \times 10^9/L$ . None of the ML-DS patients had initial CNS involvement and only 4 patients (2.4%) had organ involvement. *GATA1* mutations were detected in 85.2% (*n* = 98) of the ML-DS patients. However, as previously described,<sup>6</sup> low blast count or uncommon mutations outside of the genomic area, spanning the polymerase chain reaction, or a deletion inside this area, affecting the primer annealing site, may have resulted in a failure to detect the *GATA1* mutation in some cases. Compared with the AML-BFM 98 trial, patients in the ML-DS 2006 trial had a significantly lower WBC count ( $5.1 \times 10^9/L$  vs  $6.6 \times 10^9/L$ ; *P* = .017) and higher hemoglobin levels (9.3 g/dL vs 8.6 g/dL; *P* = .033). Seventy-four patients (47.1%) had <20% of blasts in the BM at diagnosis compared with only 18.2% of the patients in the AML-BFM 98 trial (*P* < .001).

### Treatment outcome

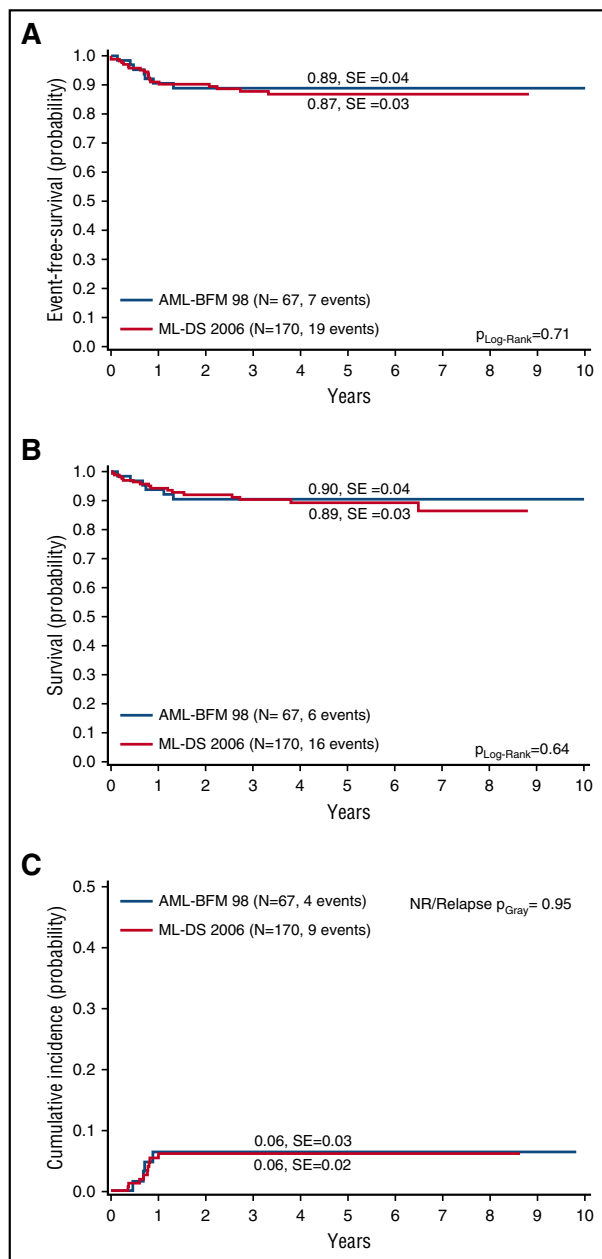
With a 5-year OS of  $89\% \pm 3\%$  and 5-year EFS of  $87\% \pm 3\%$  (Figure 2A-B), children with ML-DS have an excellent outcome. The CIR/NR was  $6\% \pm 2\%$  (Figure 2C). In the AML-BFM 98 trial

**Table 1. Characteristics of ML-DS 2006 and AML-BFM 98 (ML-DS) patients**

	ML-DS 2006		AML BFM 98		<i>P</i>
	<i>N</i>	%	<i>N</i>	%	
Total	170	100	67	100	
<b>Sex</b>					.475
Male	85	50	30	44.8	
Female	85	50	37	55.2	
<b>FAB</b>					.016*
M0	4	2.8	6	9.1	
M1/M2	—	—	—	—	
M3	—	—	—	—	
M4/M5	—	—	1	1.5	
M6	1	0.8	1	1.5	
M7	124	96.9	58	87.9	
Other	—	—	—	—	
<b>Age, y</b>					.788
<1	24	14.1	12	17.9	
1	88	51.8	36	53.7	
2	43	25.30	15	22.4	
3	10	5.9	3	4.5	
4	3	1.8	—	—	
≥5	2	1.2	1	1.5	
<b>WBC, 10<sup>9</sup>/L</b>					.014*
<10	144	87.3	47	70.1	
10-20	13	7.9	13	19.4	
20-50	4	2.4	4	6	
≥50	4	2.4	3	4.5	
<b>BM blasts, %</b>					<.001*
<20	74	47.1	12	18.2	
≥20	83	52.9	54	81.8	
<b>CNS involvement</b>					
No	136	100	64	100	
Yes	—	—	—	—	
<b>Organ involvement</b>					.227
No	166	97.6	63	94	
Yes	4	2.4	4	6	
<b>Case history, wk</b>					.094
<3	49	52.7	22	37.9	
≥3	44	47.3	36	62.1	
<b>TAM history</b>					.007
No	80	65	56	83.6	
Yes	43	35	11	16.4	
<b>GATA1</b>					
WT	17	14.8			
Mutated	98	85.2			
<b>Therapy response</b>					
Early death	2	1.2	—	—	
NR/PR	—	—	—	—	
Relapse	9	5.3	4	6	
Death in CCR	5	2.9	4	6	
Secondary malignancy	3	1.8	1	1.5	
LTFU in CCR	7	4.1	4	6	
CCR	144	84.7	54	80.6	
<b>Median</b>					
Age, y	1.6		1.76		.752
WBC, 10 <sup>9</sup> /L	5.1		6.6		.017*
Hemoglobin, g/dL	9.3		8.6		.033*
BM blasts, %	20		29		<.001*
Follow-up, y	4.0		9.6		

—, none; CCR, complete continuous remission; LTFU, lost to follow-up; PR, partial response; WT, wild type.

\*Bold *P* values are significant (<.05).



**Figure 2. Outcome of ML-DS 2006 patients compared with the historical control arm (AML-BFM 98).** (A) EFS, (B) OS, and (C) CIR/NR for ML-DS 2006 patients in comparison with ML-DS children from the previous AML-BFM 98 trial<sup>9</sup> (historical control arm). (A-C) Five-year probabilities are given.

(historical control arm; Figure 1), the 5-year OS ( $90\% \pm 4\%$ ;  $P_{\text{log-rank}} = .64$ ) and 5-year EFS ( $89\% \pm 4\%$ ;  $P_{\text{log-rank}} = .71$ ) were not significantly better (Figure 2A-B). The CIR/NR was 6% in both studies ( $P_{\text{Gray}} = .95$ ; Figure 2C), indicating that reducing the cumulative dose of etoposide from  $950 \text{ mg/m}^2$  to  $450 \text{ mg/m}^2$  plus reducing CNS prophylaxis and excluding maintenance therapy did not increase the relapse risk.

During the whole ML-DS 2006 study period, we observed 19 events (supplemental Table 1, see supplemental Data available on the *Blood* Web site). Nine patients relapsed and 7 of those died. Two patients died of cardiac failure and 3 patients died of infections (*Streptococcus* mitis sepsis, fungal sepsis, and respiratory syncytial virus pneumonia, respectively). One patient died due to a severe macrophage

activation syndrome and another one due to a transfusion incident. Three patients developed acute lymphoblastic leukemia (ALL) 1.6, 2.1, and 2.0 years after the end of chemotherapy, leading to death in 2 of those patients. We cannot conclude whether these cases represent secondary leukemias or sporadic cases of ALL in a population that is at high risk for development of ALL. Still, secondary cancer is rare in DS<sup>1</sup> and sporadic ALL has previously been well documented after ML-DS.<sup>31</sup>

Interestingly, male patients showed superior outcome (5-year OS,  $98\%$  vs  $81\% \pm 5\%$ ,  $P_{\text{log-rank}} = .002$ ; 5-year EFS,  $94\% \pm 3\%$  vs  $79\% \pm 5\%$ ,  $P_{\text{log-rank}} = .0075$ ). Also, patients with a good early response ( $n = 123$ ) had significantly better outcome with a superior 5-year OS ( $92\% \pm 3\%$  vs  $57\% \pm 16\%$ ;  $P_{\text{log-rank}} < .0001$ ), 5-year EFS ( $88\% \pm 3\%$  vs  $58\% \pm 16\%$ ;  $P_{\text{log-rank}} = .0008$ ), and a lower CIR/NR ( $3\% \pm 2\%$  vs  $27\% \pm 18\%$ ,  $P_{\text{Gray}} = .003$ ).

### Cytogenetic analysis

Cytogenetic data were available for  $n = 122$  patients (72%), which did not significantly differ from those patients without cytogenetic data with respect to 5-year OS ( $89\% \pm 3\%$  vs  $89\% \pm 5\%$ ;  $P_{\text{log-rank}} = .73$ ), 5-year EFS ( $86\% \pm 4\%$  vs  $89\% \pm 5\%$ ;  $P_{\text{log-rank}} = .94$ ), and CIR/NR ( $7\% \pm 2\%$  vs  $5\% \pm 3\%$ ;  $P_{\text{Gray}} = .73$ ). Of note, neither normal karyotype (ie, 47,XX/XY,+21c), monosomy 7/7q-, aberrations of chromosome 13, or the long arm of chromosome 1 (1q) were associated with a poor outcome (Table 2). None of the patients that relapsed carried one of these cytogenetic aberrations. In contrast, ML-DS patients with gain of chromosome 8 (+8;  $n = 37$ ) had a significantly worse 5-year EFS ( $73\% \pm 8\%$  vs  $91\% \pm 4\%$ ;  $P_{\text{Log-Rank}} = .017$ ). The CIR/NR was greatly increased ( $16\% \pm 7\%$  vs  $3\% \pm 2\%$ ;  $P_{\text{Gray}} = .02$ ). In fact, 5 of 7 relapsed patients with cytogenetic data had trisomy 8. The remaining 2 patients had isochromosome 7 (i[7]) or addition of material from chromosome 16 (add[16]), respectively. Hence, no relapses occurred in patients without gain of chromosome 8, aberrations of chromosome 16, or isochromosome 7 ( $n = 81$ ).

### Multivariate analysis

In the multivariate analysis for 5-year EFS, including sex, age, early response, as well as cytogenetic subgroups (gain of chromosome 8, aberrations of chromosome 16 or isochromosome 7) as risk factors, poor early response (relative risk [RR] = 8.55; 95% CI, 1.96-37.29;  $P_x^2 = .004$ ) was of independent prognostic significance (Table 3). Also, gain of chromosome 8 was an independent prognostic factor (RR = 4.36; 95% CI, 1.24-15.39;  $P_x^2 = .022$ ). The remaining parameters were not of independent prognostic value.

### Toxicity

DS patients are highly susceptible to therapy-induced toxicity. To evaluate the toxicity of the ML-DS 2006 protocol, we analyzed the treatment-related adverse events after each course. Severe adverse events (CTCAE grade III or higher) were most frequently observed after induction. Thirty-five percent of the ML-DS patients presented with severe infections (Figure 3). Interestingly, the frequency of infections declined in the ML-DS patients after each block so that after the last course only 17% of the ML-DS patients presented with a grade III (or higher) infection. Other recurrent severe adverse events affected the skin or the gastrointestinal tract (vomiting/nausea, stomatitis, diarrhea) or fatigue (asthenia, lethargy, malaise).

To assess the impact of excluding etoposide from consolidation on toxicity, we compared the frequencies of treatment-related adverse events to the AML-BFM 98 trial (HA vs HAE; Figure 3). Fewer severe

**Table 2. Five-year EFS/OS and CIR/NR of defined subgroups in the ML-DS 2006 study**

	N	Events	EFS, %	<i>P</i>	Deaths	OS, %	<i>P</i>	Relapse/NR	CIR/NR, %	<i>P</i>
Total	170	19	87		16	89		9	6	
<b>Sex</b>				<b>.008*</b>			<b>.002*</b>			.330
Male	85	4	94		2	98		3	4	
Female	85	15	79		14	81		6	8	
<b>Age, y</b>				.920			.740			.580
<1	24	2	91		1	96		1	5	
1	88	10	86		8	89		3	4	
2	43	6	84		6	86		4	10	
≥3	15	1	90		1	90		1	10	
<b>WBC, ×10<sup>9</sup>/L</b>				.640			.680			.580
<5	79	12	82		10	86		6	9	
5-10	65	5	91		4	93		2	3	
10-15	9	1	89		1	89		—	—	
≥15	12	1	90		1	88		1	10	
<b>Initial BM blasts, %</b>				.100			.100			.060
<20	74	12	81		11	83		7	11	
≥20	83	6	92		5	93		2	3	
<b>Early response, % BM blasts</b>				<b>&lt;.001*</b>			<b>&lt;.001*</b>			<b>.01*</b>
≤5	123	12	88		9	92		4	4	
>5	10	4	58		4	57		2	22	
<b>Case history, wk</b>				.076			.250			.070
<3	49	3	92		3	95		1	2	
≥3	44	8	79		6	83		5	13	
<b>TAM history</b>				.130			.280			.310
No	43	2	95		2	94		1	3	
Yes	80	10	85		8	89		5	7	
<b>GATA1</b>				.170			.220			.360
Mutated	98	11	87		9	90		5	6	
WT	17	0	100		0	100		0	0	
<b>Cytogenetics</b>	122									
Normal (47,XY/XX +21c)				.480			.330			.160
Yes	29	2	91		1	97		0	0	
No	93	12	84		10	88		7	8	
Gain of chr 8				<b>.018*</b>			.071			<b>.020*</b>
Yes	37	8	73		6	77		5	16	
No	85	6	91		5	95		2	3	
Monosomy 7/7q-				.350			.460			.500
Yes	7	0	100		0	100		0	0	
No	115	14	85		11	89		7	3	
chr 13 aberrations				.460			.520			.590
Yes	4	0	100		0	100		0	0	
No	118	14	85		11	89		7	3	
1q aberrations				.260			.280			.430
Yes	10	0	100		0	100		0	0	
No	112	14	85		11	88		7	3	
chr 16 aberrations/ i(7)				<b>.001*</b>			<b>&lt;.001*</b>			<b>&lt;.001*</b>
Yes	4	2	38		2	33		2	63	
No	118	12	87		9	91		5	5	

—, none.

\*Bold *P* values are significant (<.05).

adverse events were reported after the HA block of the ML-DS 2006 trial compared with the HAE block of the AML-BFM 98 trial (RR, 0.559; 95% CI, 0.382-0.817). This was mainly attributed to a reduced frequency of severe adverse events due to infections (16.8% vs 28.6%;  $P_{\text{FisherExact}} = .106$ ), fever (3.5% vs 8.8%;  $P_{\text{FisherExact}} = .164$ ), nausea (5.5% vs 11.3%;  $P_{\text{FisherExact}} = .163$ ), and fatigue (asthenia, lethargy, malaise) (6.1% vs 15.5%;  $P_{\text{FisherExact}} = .055$ ), although this trend did not reach significance within each category. As expected, the analysis of the remaining courses (AIE, AI, haM), which were identical between the trials (except for CNS prophylaxis), did not show notable differences (Figure 3).

Five patients died due to therapy (cardiac failure,  $n = 2$ ; infections,  $n = 3$ ; Table 2) resulting in a TRM of 2.9% compared with 5% in the historical control arm (AML-BFM 98;  $P_{\text{FisherExact}} = .276$ ).

## Discussion

ML-DS treatment schemata have to particularly strive for the balance between appropriate chemotherapy dosage and treatment-related toxicity.<sup>9-15</sup> Here, we demonstrate that the international ML-DS 2006

**Table 3. Multivariable Cox regression analysis of clinical factors and cytogenetics for EFS**

N = 101	RR	95% CI	P
Sex	3.65	0.76-17.48	.105
Age <2 y	2.29	0.57-9.21	.244
Trisomy 8	4.36	1.24-15.39	<b>.022*</b>
chr 16 aberrations/i(7)	3.92	0.38-40.82	.253
Early response	8.55	1.96-37.29	.004

\*Bold P value is significant (<.05).

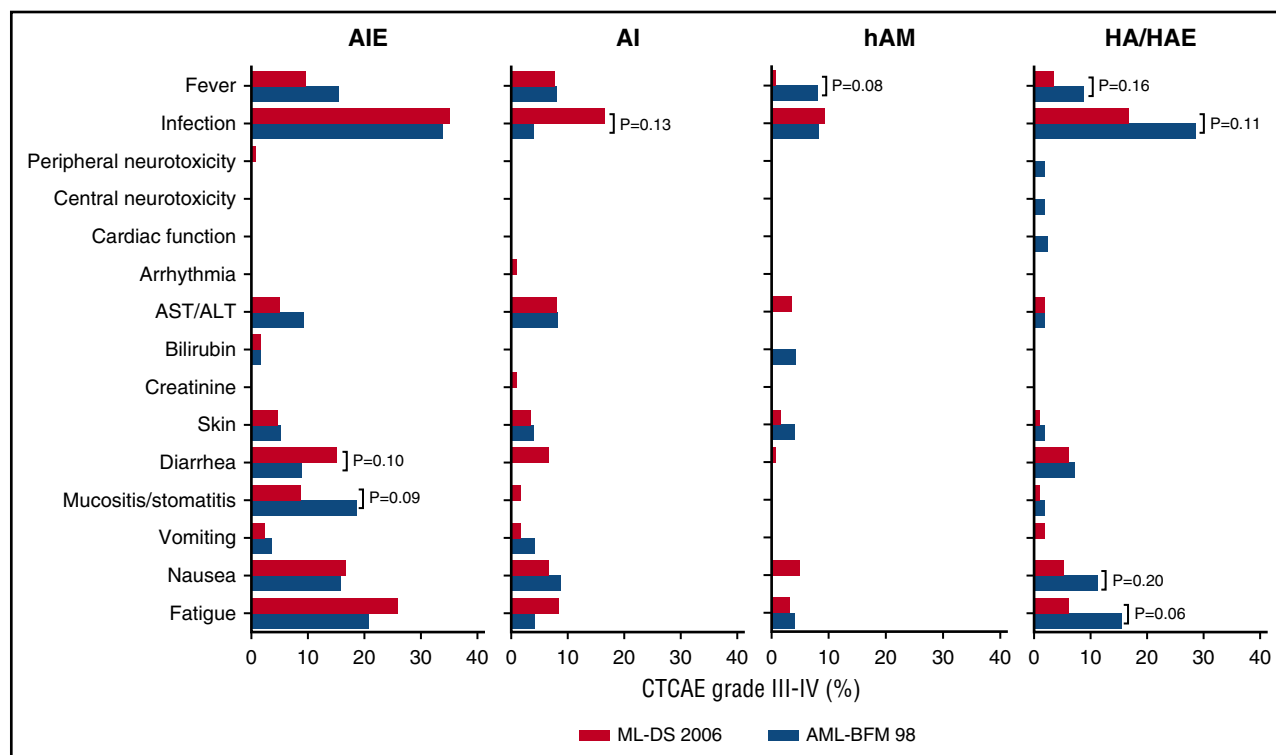
study achieved an excellent outcome (5-year OS, 89% ± 3%; 5-year EFS, 87% ± 3%) for these children with tolerable toxicity. We established early response after 1 course of chemotherapy and trisomy 8 as independent prognostic markers.

The ML-DS 2006 trial was based on the reduced-intensity arm for ML-DS patients of the AML-BFM 98 trial. Due to the excellent outcome of the ML-DS patients in the AML-BFM 98 trial (n = 67; 5-year OS, 90% ± 4%; 5-year EFS, 89 ± 4), the treatment intensity was further reduced in the ML-DS 2006 trial by excluding etoposide from consolidation, administering 4 instead 11 doses of intrathecal CNS prophylaxis and excluding maintenance therapy. Despite this reduction, the outcome in both studies was in a similar range. The CIR/NR especially was identical in both studies (6%), validating that therapy reduction did not result in a higher relapse risk. The absence of CNS involvement in any of the patients might suggest that the ML-DS blasts cannot home to this niche and explain why we did not observe an increase in CNS relapses despite reduction of CNS prophylaxis. Although the TRM was not significantly reduced (2.9% vs 5%;  $P_{\text{FisherExact}} = .276$ ), excluding etoposide resulted in fewer severe adverse events after

consolidation. However, the nonrandomized trial design and the comparison with a historical control is a potential weakness of the study, which was necessary due to the low number of ML-DS patients per year (expected accrual, 20 patients per year), and the expected low compliance with a more intense treatment arm. Still, the data may implicate that even further reduction of treatment intensity could be feasible based on prognostic factors.

Despite a general consent about longer treatment intervals and the discouraging role of hematopoietic stem cell transplantation, international study protocols for ML-DS differ substantially (Table 4).<sup>9-15</sup> The role of high-dose cytarabine and the dosing of anthracyclines especially have yet to be defined. Whereas in most European and North American trials for ML-DS courses with high-dose cytarabine (3 g/m<sup>2</sup> per day) are applied,<sup>9-12</sup> Japanese studies (Japan Pediatric Leukemia/Lymphoma Study Group [JPLSG] AML D05) obtained excellent results (3-year OS: 88% ± 4% 3-year EFS: 83% ± 4%) and low TRM (1.4%) using standard-dose cytarabine (100 mg/m<sup>2</sup> per day) only.<sup>15</sup> Together with the results of the Toronto group that used a low-dose cytarabine-based regimen,<sup>13,32</sup> which contained no anthracyclines and no etoposide, these data indicate that subgroups of patients with ML-DS can be cured even with much lower doses than in the current ML-DS 2006 trial. But the identification of clear prognostic factors that would predict which patients are at risk of relapse and need intense therapy remained elusive.<sup>21</sup>

Our study makes a significant step toward risk-adapted therapy in ML-DS. We show that the early therapy response, assessed by morphology at the start of the second block, is predictive of treatment outcome and relapse. Future trials will need to show whether monitoring of minimal residual disease could even increase this predictive value. Most importantly, however, our analysis showed



**Figure 3. Treatment-related toxicity of ML-DS 2006 patients.** Percentage of ML-DS patients with severe adverse events (CTCAE grade III or higher) after each block of chemotherapy in comparison with the ML-DS patients, treated according to the AML-BFM 98 protocol. Only P values (Fisher exact) ≤ .2 are shown. All other comparisons are  $P_{\text{FisherExact}} > .2$ . ALT, alanine transaminase; AST, aspartate transaminase.

**Table 4. Comparison of recent ML-DS trials**

	Years	N	DNR, mg/m <sup>2</sup>	ARA-C, mg/m <sup>2</sup>	Etoposide, mg/m <sup>2</sup>	TRM, %	5-y OS, %	5-y EFS, %	Reference
ML-DS-06	2006-2015	170	240	27 400	450	2.9	89	87	
AML-BFM 98	1998-2003	204	240	29 400	950	5.0	90	89	9
COG A2971	1999-2003	132	320	27 200	0*	2.3	84	79	12
Al-Ahmari	1990-2003	34	0	7 400	0	0	77	67	33
JPLSG D05	2008-2010	72	250	3 500	1350	1.4	88	83	15

ARA-C, cytarabine; DNR, daunorubicin.

\*6-Thioguanine, 1600 mg/m<sup>2</sup>; L-asparaginase, 12 000 IU/m<sup>2</sup>.

that all relapses were in the cytogenetic groups of patients with trisomy 8, aberration of chromosome 16, or isochromosome 7. This means that none of the patients belonging to the other cytogenetic subgroups (n = 81) experienced a relapse. This includes patients with cytogenetic aberrations which were previously proposed to be associated with higher relapse risk, such as monosomy 7 or normal karyotype (ie, 47,XX/XY,+21c).<sup>14,21</sup> Although the cytogenetic groups are small, limiting the confidence of the subgroup analysis, they are in accordance with a recent Japanese study<sup>15</sup> that could neither confirm monosomy 7 nor normal karyotype as poor prognostic factors. Thus, reproducible and consistent data across the study groups imply that monosomy 7 and normal karyotype are not predictive for poor prognosis. Instead, our data indicate gain of chromosome 8 to predict a high relapse risk and poor EFS.

Despite the use of high-dose cytarabine, we observed a TRM of 2.9% (n = 5 of 170 patients), which is in the same range as the Children's Oncology Group (COG) A2971 trial<sup>12</sup> (2.3%; n = 3 of 132;  $P_{\text{FisherExact}} = 1.000$ ) that also used high-dose cytarabine, and which does not significantly differ from the JPLSG AML D05 trial<sup>15</sup> (1.4%; n = 1/72;  $P_{\text{FisherExact}} = 0.673$ ) that used standard-dose cytarabine. Three patients died due to infections (*Streptococcus mitis* sepsis, fungal sepsis, and respiratory syncytial virus pneumonia, respectively). This is in contrast to a previous study which included the German ML-DS patients of the ML-DS 2006 trial and the AML-BFM 98 trial and found that all deaths due to infections were attributed to respiratory syncytial virus pneumonia.<sup>33</sup> Two patients died due to cardiac failure, underscoring the sensitivity of children with DS to cardiotoxic agents. Thus, lowering cardiotoxicity, for example, by introducing liposomal formulations of daunorubicin,<sup>34</sup> should be an aim for the development of future treatment protocols.

Our study demonstrates that ML-DS is not necessarily associated with high treatment-related toxicity even when compared with non-DS-AML patients (supplemental Figure 1). Knowing the high susceptibility of DS patients to cytostatic agents, this observation might be explained by 2 factors. First, ML-DS patients do not obtain 1 very intense course (high-dose cytarabine and mitoxantrone [HAM]) and the anthracycline doses are reduced in all courses. Second, the treatment intervals for ML-DS patients are longer (median interval between first [AIE] and second course [AI/HAM] for ML-DS vs non-DS-AML, 32 vs 25 days;  $P < .001$ ) giving the patients more time to recover after each course; that is, a block was only started if the child showed recovery of blood counts and was in good general condition without clinical signs of an infection, mucositis, or fever.

Recently, wee1 kinase inhibitors<sup>35</sup> or histone deacetylase inhibitors<sup>36,37</sup> have been identified as promising classes of drugs for the future treatment of ML-DS. Those drugs can be introduced to upcoming ML-DS protocols to substitute other less tolerated chemotherapeutic agents while increasing/maintaining overall efficacy.

With the dismal outcomes after relapse especially (7 of 9 relapsed patients died in the ML-DS 2006 trial), these new substances may help to further reduce therapy-related toxicity while preventing relapses.<sup>19</sup>

In summary, we show that therapy reduction could be achieved in children with ML-DS without compromising the excellent outcome. The identification of clinical and cytogenetic prognostic markers in our study offers new possibilities for risk-adapted therapy for children with ML-DS. This will help to further reduce therapy in low-risk patients and intensify treatment in high-risk patients to avoid relapses.

## Acknowledgments

The authors thank all colleagues, data managers, and technicians of the participating hospitals for their valuable cooperation. The authors thank J. E. Müller (Hannover, Germany) for competent data management.

This work was supported by the Deutsche Krebshilfe e.V. and Beat Leukemia with Connor. J.-H.K. is a fellow of the Emmy Noether-Programme from the German Research Foundation (DFG; KL-2374/2-1).

## Authorship

Contribution: U.C., H.H., C.M.Z., D.R., and J.-H.K. conceived and designed the study; H.H., C.M.Z., D.R., and J.-H.K. provided financial and administrative support; M.D., H.H., C.M.Z., D.R., and J.-H.K. provided study materials or patients; M.U., M.R., C.v.N., L.S., M.D., H.H., C.M.Z., D.R., and J.-H.K. collected and assembled data; M.U., M.R., C.v.N., M.Z., and J.-H.K. analyzed and interpreted data; M.U. and J.-H.K. wrote the manuscript; and all authors gave final approval of manuscript.

Conflict-of-interest disclosure: D.R. has consulting or advisory roles for Celgene, Pfizer, MSD, Astellas Pharma, Novartis, and Boehringer and receives research funding from Celgene. C.M.Z. has consulting or advisory roles for Pfizer, Daiichi Sankyo, Celgene, Novartis, Bristol-Myers Squibb, and Gilead Sciences and receives research funding from Karyopharm Therapeutics, Pfizer, Bristol-Myers Squibb, and GlaxoSmithKline. M.D. receives research funding from Beckman Coulter and Becton Dickinson. H.H. has a consulting or advisory role for Celgene. The remaining authors declare no competing financial interests.

ORCID profiles: J.-H.K., 0000-0002-1070-0727.

Correspondence: Jan-Henning Klusmann, Department of Pediatric Hematology and Oncology, Hannover Medical School, Carl-Neuberg-Str 1, 30625 Hannover, Germany; e-mail: klusmann.jan-henning@mh-hannover.de.

## References

- Hasle H. Pattern of malignant disorders in individuals with Down's syndrome. *Lancet Oncol*. 2001;2(7):429-436.
- Vardiman JW, Thiele J, Arber DA, et al. The 2008 revision of the World Health Organization (WHO) classification of myeloid neoplasms and acute leukemia: rationale and important changes. *Blood*. 2009;114(5):937-951.
- Bennett JM, Catovsky D, Daniel MT, et al. Criteria for the diagnosis of acute leukemia of megakaryocyte lineage (M7). A report of the French-American-British Cooperative Group. *Ann Intern Med*. 1985;103(3):460-462.
- Langebrake C, Creutzig U, Reinhardt D. Immunophenotype of Down syndrome acute myeloid leukemia and transient myeloproliferative disease differs significantly from other diseases with morphologically identical or similar blasts. *Klin Padiatr*. 2005;217(3):126-134.
- Klusmann JH, Creutzig U, Zimmermann M, et al. Treatment and prognostic impact of transient leukemia in neonates with Down syndrome. *Blood*. 2008;111(6):2991-2998.
- Alford KA, Reinhardt K, Garnett C, et al; International Myeloid Leukemia-Down Syndrome Study Group. Analysis of GATA1 mutations in Down syndrome transient myeloproliferative disorder and myeloid leukemia. *Blood*. 2011;118(8):2222-2238.
- Yoshida K, Toki T, Okuno Y, et al. The landscape of somatic mutations in Down syndrome-related myeloid disorders. *Nat Genet*. 2013;45(11):1293-1299.
- Creutzig U, Zimmermann M, Dworzak MN, Ritter J, Schellong G, Reinhardt D. Development of a curative treatment within the AML-BFM studies. *Klin Padiatr*. 2013;225(s):S79-S86.
- Creutzig U, Reinhardt D, Diekamp S, Dworzak M, Stary J, Zimmermann M. AML patients with Down syndrome have a high cure rate with AML-BFM therapy with reduced dose intensity. *Leukemia*. 2005;19(8):1355-1360.
- Abildgaard L, Ellebaek E, Gustafsson G, et al. Optimal treatment intensity in children with Down syndrome and myeloid leukaemia: data from 56 children treated on NOPHO-AML protocols and a review of the literature. *Ann Hematol*. 2006;85(5):275-280.
- Rao A, Hills RK, Stiller C, et al. Treatment for myeloid leukaemia of Down syndrome: population-based experience in the UK and results from the Medical Research Council AML 10 and AML 12 trials. *Br J Haematol*. 2006;132(5):576-583.
- Sorrell AD, Alonzo TA, Hilden JM, et al. Favorable survival maintained in children who have myeloid leukemia associated with Down syndrome using reduced-dose chemotherapy on Children's Oncology Group trial A2971: a report from the Children's Oncology Group. *Cancer*. 2012;118(19):4806-4814.
- Tandonnet J, Clavel J, Baruchel A, Nacka F, P  rel Y. Myeloid leukaemia in children with Down syndrome: report of the registry-based French experience between 1990 and 2003. *Pediatr Blood Cancer*. 2010;54(7):927-933.
- Kudo K, Kojima S, Tabuchi K, et al. Prospective study of a pirarubicin, intermediate-dose cytarabine, and etoposide regimen in children with down syndrome and acute myeloid leukemia: the Japanese Childhood AML Cooperative Study Group. *J Clin Oncol*. 2007;25(34):5442-5447.
- Taga T, Watanabe T, Tomizawa D, et al. Preserved high probability of overall survival with significant reduction of chemotherapy for myeloid leukemia in down syndrome: a nationwide prospective study in japan. *Pediatr Blood Cancer*. 2016;63(2):248-254.
- Schweitzer J, Zimmermann M, Rasche M, et al. Improved outcome of pediatric patients with acute megakaryoblastic leukemia in the AML-BFM 04 trial. *Ann Hematol*. 2015;94(8):1327-1336.
- Taub JW, Matherly LH, Stout ML, Buck SA, Gurney JG, Ravindranath Y. Enhanced metabolism of 1-beta-D-arabinofuranosylcytosine in Down syndrome cells: a contributing factor to the superior event free survival of Down syndrome children with acute myeloid leukemia. *Blood*. 1996;87(8):3395-3403.
- Zwaan CM, Kaspers GJ, Pieters R, et al. Different drug sensitivity profiles of acute myeloid and lymphoblastic leukemia and normal peripheral blood mononuclear cells in children with and without Down syndrome. *Blood*. 2002;99(1):245-251.
- Taga T, Saito AM, Kudo K, et al. Clinical characteristics and outcome of refractory/relapsed myeloid leukemia in children with Down syndrome. *Blood*. 2012;120(9):1810-1815.
- Hitzler JK, He W, Doyle J, et al; CIBMTR Pediatric Cancer Working Committee. Outcome of transplantation for acute myelogenous leukemia in children with Down syndrome. *Biol Blood Marrow Transplant*. 2013;19(6):893-897.
- Blink M, Zimmermann M, von Neuhoff C, et al. Normal karyotype is a poor prognostic factor in myeloid leukemia of Down syndrome: a retrospective, international study. *Haematologica*. 2014;99(2):299-307.
- Hasle H, Abrahamsson J, Arola M, et al. Myeloid leukemia in children 4 years or older with Down syndrome often lacks GATA1 mutation and cytogenetics and risk of relapse are more akin to sporadic AML. *Leukemia*. 2008;22(7):1428-1430.
- Bennett JM, Catovsky D, Daniel MT, et al. Proposal for the recognition of minimally differentiated acute myeloid leukaemia (AML-MO). *Br J Haematol*. 1991;78(3):325-329.
- von Neuhoff C, Reinhardt D, Sander A, et al. Prognostic impact of specific chromosomal aberrations in a large group of pediatric patients with acute myeloid leukemia treated uniformly according to trial AML-BFM 98. *J Clin Oncol*. 2010;28(16):2682-2689.
- Sandahl JD, Kjeldsen E, Abrahamsson J, et al. Ploidy and clinical characteristics of childhood acute myeloid leukemia: A NOPHO-AML study. *Genes Chromosomes Cancer*. 2014;53(8):667-675.
- Mitelman F, ed. ISCN 1995: An International System for Human Cytogenetic Nomenclature (1995). Basel, Switzerland: Karger.
- Cheson BD, Cassileth PA, Head DR, et al. Report of the National Cancer Institute-sponsored workshop on definitions of diagnosis and response in acute myeloid leukemia. *J Clin Oncol*. 1990;8(5):813-819.
- Kaplan EL, Meier P. Nonparametric estimation from incomplete observations. *J Am Stat Assoc*. 1958;53:457-481.
- Mantel N. Evaluation of survival data and two new rank order statistics arising in its consideration. *Cancer Chemother Rep*. 1966;50(3):163-170.
- Cox DR. Regression models and life-tables. *J R Stat Soc Ser B*. 1972;34:187.
- Hellebostad M, Carpenter E, Hasle H, Mitchell C, Vyas P. GATA1 mutation analysis demonstrates two distinct primary leukemias in a child with down syndrome; implications for leukemogenesis. *J Pediatr Hematol Oncol*. 2005;27(7):408-409.
- Al-Ahmari A, Shah N, Sung L, Zipursky A, Hitzler J. Long-term results of an ultra low-dose cytarabine-based regimen for the treatment of acute megakaryoblastic leukaemia in children with Down syndrome. *Br J Haematol*. 2006;133(6):646-648.
- Hassler A, Bochennek K, Gilfert J, et al. Infectious complications in children with acute myeloid leukemia and down syndrome: Analysis of the prospective multicenter trial AML-BFM 2004. *Pediatr Blood Cancer*. 2016;63(6):1070-1074.
- Creutzig U, Zimmermann M, Bourquin JP, et al. Randomized trial comparing liposomal daunorubicin with idarubicin as induction for pediatric acute myeloid leukemia: results from Study AML-BFM 2004. *Blood*. 2013;122(1):37-43.
- Caldwell JT, Edwards H, Buck SA, Ge Y, Taub JW. Targeting the wee1 kinase for treatment of pediatric Down syndrome acute myeloid leukemia. *Pediatr Blood Cancer*. 2014;61(10):1767-1773.
- Scheer C, Kratz C, Witt O, Creutzig U, Reinhardt D, Klusmann JH. Hematologic response to vorinostat treatment in relapsed myeloid leukemia of Down syndrome. *Pediatr Blood Cancer*. 2016;63(9):1677-1679.
- Stankov MV, El Khatib M, Kumar Thakur B, et al. Histone deacetylase inhibitors induce apoptosis in myeloid leukemia by suppressing autophagy. *Leukemia*. 2014;28(3):577-588.





**blood**<sup>®</sup>

2017 129: 3314-3321

doi:10.1182/blood-2017-01-765057 originally published  
online April 11, 2017

## **Therapy reduction in patients with Down syndrome and myeloid leukemia: the international ML-DS 2006 trial**

Madita Uffmann, Mareike Rasche, Martin Zimmermann, Christine von Neuhoff, Ursula Creutzig, Michael Dworzak, Lenie Scheffers, Henrik Hasle, C. Michel Zwaan, Dirk Reinhardt and Jan-Henning Klusmann

---

Updated information and services can be found at:

<http://www.bloodjournal.org/content/129/25/3314.full.html>

Articles on similar topics can be found in the following Blood collections

[Clinical Trials and Observations](#) (4786 articles)

[Free Research Articles](#) (5069 articles)

[Myeloid Neoplasia](#) (1834 articles)

[Pediatric Hematology](#) (568 articles)

---

Information about reproducing this article in parts or in its entirety may be found online at:

[http://www.bloodjournal.org/site/misc/rights.xhtml#repub\\_requests](http://www.bloodjournal.org/site/misc/rights.xhtml#repub_requests)

Information about ordering reprints may be found online at:

<http://www.bloodjournal.org/site/misc/rights.xhtml#reprints>

Information about subscriptions and ASH membership may be found online at:

<http://www.bloodjournal.org/site/subscriptions/index.xhtml>