



Moore, S., Burrows, R., Picco, L., Martin, T., Greenwell, S., Scott, T., & Payton, O. (2018). A study of dynamic nanoscale corrosion initiation events by HS-AFM. *Faraday Discussions*. <https://doi.org/10.1039/C8FD00017D>

Version created as part of publication process; publisher's layout; not normally made publicly available

License (if available):
CC BY

Link to published version (if available):
[10.1039/C8FD00017D](https://doi.org/10.1039/C8FD00017D)

[Link to publication record in Explore Bristol Research](#)
PDF-document

This is the final published version of the article (version of record). It first appeared online via RSC at <http://pubs.rsc.org/en/Content/ArticleLanding/2018/FD/C8FD00017D#!divAbstract> . Please refer to any applicable terms of use of the publisher.

University of Bristol - Explore Bristol Research

General rights

This document is made available in accordance with publisher policies. Please cite only the published version using the reference above. Full terms of use are available:
<http://www.bristol.ac.uk/pure/about/ebr-terms>

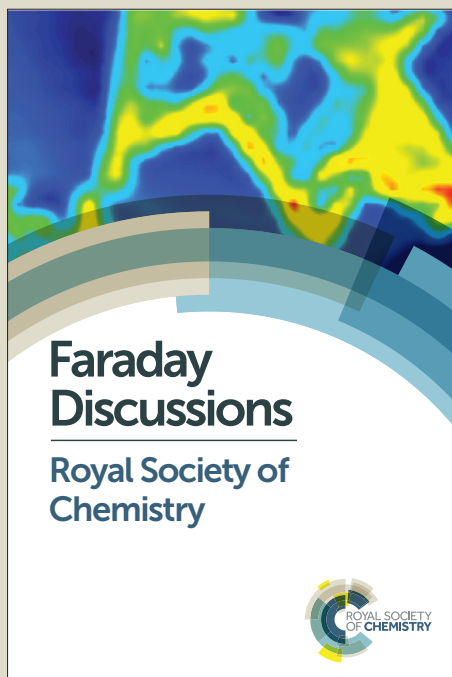
Faraday Discussions

Accepted Manuscript



This manuscript will be presented and discussed at a forthcoming Faraday Discussion meeting. All delegates can contribute to the discussion which will be included in the final volume.

Register now to attend! Full details of all upcoming meetings: <http://rsc.li/fd-upcoming-meetings>



This is an *Accepted Manuscript*, which has been through the Royal Society of Chemistry peer review process and has been accepted for publication.

Accepted Manuscripts are published online shortly after acceptance, before technical editing, formatting and proof reading. Using this free service, authors can make their results available to the community, in citable form, before we publish the edited article. We will replace this *Accepted Manuscript* with the edited and formatted *Advance Article* as soon as it is available.

You can find more information about *Accepted Manuscripts* in the [Information for Authors](#).

Please note that technical editing may introduce minor changes to the text and/or graphics, which may alter content. The journal's standard [Terms & Conditions](#) and the [Ethical guidelines](#) still apply. In no event shall the Royal Society of Chemistry be held responsible for any errors or omissions in this *Accepted Manuscript* or any consequences arising from the use of any information it contains.

This article can be cited before page numbers have been issued, to do this please use: S. Moore, R. Burrows, L. Picco, T. Martin, S. Greenwell, T. Scott and O. Payton, *Faraday Discuss.*, 2018, DOI: 10.1039/C8FD00017D.

Cite this: DOI: 10.1039/xxxxxxxxxx

A Study of Dynamic Nanoscale Corrosion Initiation Events by HS-AFM†

Stacy Moore,^{*a} Robert Burrows,^b Loren Picco^{a,c}, Tomas L. Martin^a, Scott J. Greenwell^a, Tom Scott^a and Oliver D. Payton^{a,c}

Received Date

Accepted Date

DOI: 10.1039/xxxxxxxxxx

www.rsc.org/journalname

Atomic force microscopes (AFMs) are capable of high-resolution mapping of structures and the measurement of mechanical properties at nanometre scales within gaseous, liquid and vacuum environments. The contact mode high-speed AFM (HS-AFM) developed at Bristol Nano Dynamics Ltd. operates at speeds orders of magnitude faster than conventional AFMs, and is capable of capturing multiple frames per second. This allows for direct observation of dynamic events in realtime, with nanometre lateral resolution and subatomic height resolution. HS-AFM is a valuable tool for the imaging of nanoscale corrosion initiation events, such as metastable pitting, grain boundary (GB) dissolution and short crack formation during stress corrosion cracking (SCC). Within this study HS-AFM was combined with SEM and FIB milling to produce a multifaceted picture of localised corrosion events occurring on thermally sensitised AISI 304 stainless steel in an aqueous solution of 1% sodium chloride (NaCl). HS-AFM measurements were performed *in situ* by imaging within a custom built liquid cell with parallel electrochemical control. The high resolution of the HS-AFM allowed for measurements to be performed at individual reaction sites, i.e. at specific GB carbide surfaces. Topographic maps of the sample surface allowed for accurate measurements of the dimensions of pits formed. Using these measurements it was possible to calculate, and subsequently model, the volumes of metal reacting with respect to time, and so the current densities and ionic fluxes at work. In this manner, the local electrochemistry at nanoscale reaction sites may be reconstructed.

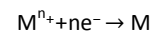
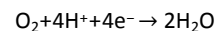
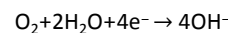
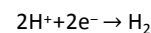
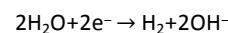
1 Introduction

Stainless steels are important for structural applications and are widely used in the nuclear power industry due to their good mechanical properties and tolerance of elevated temperatures¹⁻³. They are, however, susceptible to corrosion; the cause of a significant number of failure events in the nuclear sector^{2,4,5}. Methods to detect and model the effects of corrosion are important for the prevention of these failure events.

Corrosion is an irreversible process that causes material deterioration as a result of dissolution^{6,7}. It is an electrochemical process in which a potential difference across the material/environment interface results in the flow of ions and electrons through an electrolyte^{6,7}. The process of metallic corrosion is a conglomerate of anodic dissolution of the metal:



and cathodic reactions of the electrolyte:



Corrosion events are affected by a number of different factors, both internal (e.g. surface microstructural properties) and external (e.g.

* Corresponding author. Tel.: +44 117 33 17684 - Email: stacy.moore@bristol.ac.uk

^a Interface Analysis Centre, HH Wills Physics Laboratory, University of Bristol, Bristol, BS8 1TL, UK.

^b National Nuclear Laboratory, Building 102B, Stonehouse Park, Sperry Way, Stonehouse, Gloucestershire, GL10 3UT.

^c Bristol Nano Dynamics Ltd., Bristol, UK

† Electronic Supplementary Information (ESI) available: Videos of HS-AFM observations of carbides, intergranular pit formation, and intergranular pit chains. Also provided is a full set of results from the multiphysics simulation of the intergranular pit formation event.



environmental conditions), and as such is considered a highly complex process⁴. Corrosion of metallic surfaces can be classified into two different forms: uniform or localised⁷. Uniform corrosion takes place over the entire surface and occurs when the surface is in contact with a solution in which it is active^{6,7}. Localised corrosion occurs at specific sites on the metal surface⁷. Forms of localised corrosion, such as pitting or intergranular attack (IGA) for example, are of particular concern as they can occur without any obvious outward signs of damage accumulation, whilst causing significant deterioration of component structural strength^{2-4,8-10}.

Pitting events on stainless steels have been the focus of considerable research^{3,6,10-15}. Detection methods of the early stages of localised corrosion events, such as pitting, are of particular interest for further understanding of the mechanisms occurring. This is typically defined as the stages preceding the development of an optically visible pit or crack¹². These stages are poorly understood, as the small scale at which they occur presents a challenge for successful detection or measurement^{12,14}. By producing data of the early stages of localised corrosion, results and observations may be fed into computational models, allowing for a mathematical reconstruction of the electrochemical events occurring^{11,12}.

A number of different techniques have been implemented in previous works, these include, but are not limited to: optical monitoring techniques^{3,10,13}, electrochemical noise (EN)¹⁶, electrochemical impedance spectroscopy (EIS)¹⁷ and scanning electron microscope (SEM)^{13,17}. Thus far, nucleation sites for localised corrosion events have not been conclusively identified, though they often occur at discontinuities on the surface, such as at grain boundaries (GBs) or inclusions^{6,7,11,18}.

The nanoscale initiation sites and liquid environment of corrosion are ideal for investigation by atomic force microscopy (AFM): a scanning probe microscopy technique developed by Binnig, Quate, and Gerber in 1986¹⁹. AFM is capable of high-resolution imaging of surface structures and the measurement of mechanical properties at nanometre scales²⁰⁻²⁵. Furthermore, it is able to image in gaseous or liquid environments, making it a valuable tool for studying solid-liquid interfaces, such as those required for *in situ* corrosion studies²⁴.

In 2000, Williford *et al.* produced time-lapse images, using electrochemical AFM (ECAFM), of the early stages of pitting and IGA of thermally sensitised Type 304 stainless steel¹². Williford observed that IGA began in the GB between carbides, and proposed that this was a result of the carbides being cathodic with respect to the bulk matrix, and thus being partially cathodically protected¹². Observations were also made of pit growth from an irregular shape into a round pit, with island formations over a period of 6 minutes¹². Williford experienced a number of limitations associated with using AFM. Firstly, time-lapse images were obtained at 3600 s intervals (once every 10-20 cycles of polarisation), this meant that reactions occurring between these intervals must be inferred¹². Additionally, due to the speed at which images were obtained, in combination with the lateral size of the window, Williford was unable to image

localised corrosion events as they occurred as a result of not "being in the right place at the right time"¹².

The long collection times is a significant limiting factor of AFM. The contact mode HS-AFM (Bristol Nano Dynamics Ltd.) at the University of Bristol images multiple frames per second, orders of magnitude faster than conventional AFM²⁴. This allows for the imaging of processes in real-time with nanoscale lateral resolution and sub-nanometre height resolution²⁴. The increased speed of HS-AFM not only allows for direct imaging of dynamic nanoscale events, but also for the imaging of macro-sized areas on the sample surface without any drop in resolution. This is particularly important for detailed pre- and post-corrosion studies as well as higher throughput allowing for statistically significant data.

The capabilities of HS-AFM combined with its ability to image at solid-liquid interfaces, make it an ideal tool for *in situ* observations of corrosion initiation events^{24,26}. This has been demonstrated in previous studies^{26,27}. Within the work presented here, localised corrosion phenomena, such as pitting and IGA, were investigated using high-speed AFM (HS-AFM).

2 Materials and Methods

2.1 Materials and Sample Preparation

Samples were cut from a sheet of American Iron and Steel Institute (AISI) type 304 stainless steel supplied by Goodfellow Cambridge Ltd. (Huntingdon, UK), that had been thermally sensitised at 600°C for 70 hours.

Once cut, an electrical connection was made to the sample by attaching a wire to the back face of the sample using silver paint (Agar Scientific, UK), this wire was secured in place once samples were set in resin (cold set, Struers™ Clarocit). Continuity tests of the connection between the wire and the sample surface were carried out using a multimeter.

Subsequent surface preparation techniques were carried out by procedures described in more detail in previous works²⁸. The sample surface was initially polished using progressively finer grades of silicon carbide (SiC) grit paper, from P600 up to P4000, using water as lubricant. The sample was then polished using 3 μm to 0.25 μm diamond paste (Kemet International Ltd., KD Diamond Pastes), using a Struers™ DP-Lubricant (Brown). As the final polishing step the sample was vibropolished (VibroMet™, Buehler) with colloidal silica (MasterMet R, Buehler) for 12 hours.

Once polished the sample was cleaned thoroughly. Firstly, the surface was rinsed with water and detergent to remove any colloidal silica residue present. The sample was then cleaned by twice placing it into an ultrasonic bath with (HPLC-grade) ethanol. This was then repeated with isopropanol before rinsing with Milli-Q™ water and drying thoroughly with dry air.

2.2 High-Speed Atomic Force Microscopy (HS-AFM)

The contact mode HS-AFM (Bristol Nano Dynamics Ltd.) at the University of Bristol uses a laser Doppler vibrometer (LDV) system to



accurately measure the vertical displacement of a cantilever with a sharp probe at its tip. Vertical displacement is monitored as the tip is moved across a sample surface in a raster scan pattern. This information is used to build up topographic maps of the surface in real-time using bespoke software (Bristol Nano Dynamics Ltd., UK). Collected data was then analysed further using Gwyddion SPM data processing software.

HS-AFM observations of localised corrosion events were performed using a custom-built liquid cell with a contact-mode MSNL-10 cantilever (Bruker, USA). Samples were mounted onto a 12.5 mm SEM stub and secured to the stage of the HS-AFM. For investigation into pitting corrosion initiation, samples were imaged in a 1% aqueous sodium chloride solution (NaCl) and polarised using a potentiostat.

The HS-AFM is also equipped with a 20× optical objective. This was used to identify features on the sample surface such that specific areas could be imaged, such as optically visible pitting events. Once pitting corrosion is optically visible the cantilever tip was placed just ahead of the corrosion front such that initiation events may be imaged. This technique has been implemented in other works¹².

2.2.1 Computational Modelling.

Post collection analysis of the topographic maps collected by HSAFM of the sample surface was used to calculate the volume of metal reacting with respect to time, and so the current densities and ionic fluxes at work. Using this data it was possible to produce a model of the system, allowing for a simulation of the events as they were observed.

Modelling of the system was performed using the Tertiary Current Distribution, Nernst-Planck interface in COMSOL Multiphysics 3.5a. This is a pre-defined equation system for solving diffusion and migration for ionic transport under electroneutrality using the Nernst-Planck equations. The electroneutrality condition assumes that the model includes all significant current-carrying ions. In addition, the model includes the water auto-ionisation equilibrium condition.

For each species, i , the mass balance for the diluted species in an electrolyte is described by:

$$\frac{\partial c_i}{\partial t} + \Delta \cdot \mathbf{N}_i = R_{i, \text{tot}} \quad (1)$$

where c_i is the concentration of the ion i (mol m^{-3}), $R_{i, \text{tot}}$ is its rate of production/depletion, and \mathbf{N}_i is its flux ($\text{mol m}^{-2} \text{s}^{-1}$). Flux, \mathbf{N}_i , is defined by:

$$\mathbf{N}_i = -D_i \nabla c_i - z_i u_{m,i} F c_i \nabla \phi + c_i \mathbf{u} \quad (2)$$

where D_i is the diffusion coefficient of the ion i ($\text{m}^2 \text{s}^{-1}$), z_i is its valence, $u_{m,i}$ is its mobility (s mol kg^{-1}), F is the Faraday constant, ϕ is the electrolyte potential and \mathbf{u} is the velocity vector (m s^{-1}).

Models are constructed with ease within COMSOL as the appropriate physical equations and constraints are already built into the software²⁹. A set of partial differential equations are compiled for the system being studied as a result of the user defining the physical attributes of the system, such as material properties, boundary constraints, initial conditions etc.²⁹.

A topographic map produced from HS-AFM data of the corroded area was manually imported into COMSOL to build-up the initial surface geometry. The surface features are interpreted as in-plane (flat) boundaries on a sub-domain surface with matching dimensions. The 3D sub-domain represents the volume of water adjacent to the surface. This geometry was used to set-up a mesh.

The ionic properties of the sub-domain were specified within the model. A simplified system of 5 species were considered in this model: Fe^{2+} , Cl^- , Na^+ , H^+ and OH^- ^{29,30}. The mobility for each species was calculated using their respective diffusion coefficients^{31,32}. Boundary conditions were defined for the different features (representative ionic flux, bulk concentration, potential etc.), to give a specific representative set of reactions and behaviours at different boundaries.

The final step was to solve with a time dependent study, computing reaction kinetics and chemical composition of a system over a specified time interval. The results were then inspected and compared to measured results.

A series of assumptions were required for this study, which largely may be considered qualitatively. These included:

- This model did not consider speciation of the corrosion product.
- If a nucleation event occurred at the site of an inclusion, the dissolution products of the inclusion were not considered in the model.
- The rest of the surface in the imported geometry was considered to be inert.
- The action of the cantilever probe on the surface and its effect on local transport and pit initiation was not considered for this model.

2.3 Electrochemical Tests

Pitting experiments were performed *in situ* on the stage of the HSAFM (shown in Figure 1). A standard three-electrode set-up was implemented for electrochemical tests, within an electrolyte of 1% (0.28 M) aqueous NaCl. A 4 mm diameter circular area (total area 0.13 cm^2) of the sample surface was exposed to the solution, acting as the working electrode (WE). The counter electrode (CE) consisted of a platinum wire mesh, and a silver/ silver chloride (Ag/AgCl) micro-electrode with 2 mm diameter (World Precision Instruments Inc.) was used as the reference electrode (RE).

The rates at which corrosion reactions take place are influenced by the potential difference across the metal/electrolyte interface⁶. These reactions can therefore be driven, or suppressed, by the



application of a potential relative to the open circuit potential (OCP), known as an overpotential. Potentiodynamic tests were performed to characterise the corrosion behaviour of the system under

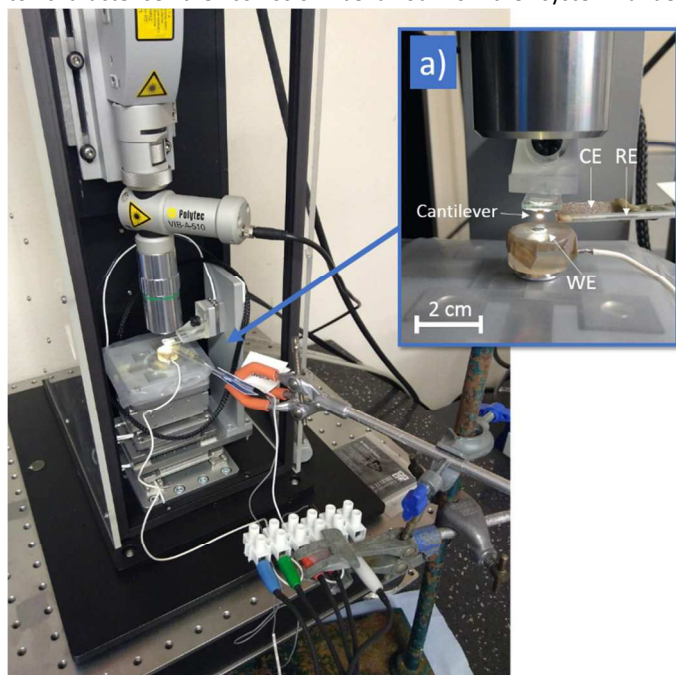


Fig. 1 Photograph taken of the experimental set-up showing the HS-AFM and parallel electrochemical control. Inset: a) an additional photograph with scale bar showing a close-up of the three-electrode set-up, with labels for the working electrode (WE), counter electrode (CE) and reference electrode (RE). The cantilever is mounted onto the glass slide comprising the upper part of the liquid cell. No electrolyte was present in the set-up photographed.

investigation. Within these tests, a potential was applied between the WE and the RE by an Interface 1000 Potentiostat/Galvanostat/ZRA (Gamry Instruments), which then recorded the resulting net current (equivalent to the difference between anodic and cathodic reaction rates) between the WE and the CE, producing a polarisation curve.

Pitting corrosion on stainless steels is characterised by multiple sharp peaks in the measured current^{7,10,11,14,15,18}. These occur as a result of the breakdown of the passive layer in the localised areas affected. Samples were monitored by optical microscope during potentiodynamic tests in order to draw parallels between events visually occurring on the surface and the current transients being measured as potential is varied. It is important for subsequent HS-AFM measurements to identify optical triggers that indicate the onset of corrosion events. These areas may then be identified by the optical objective of the HS-AFM and subsequently imaged.

Following these initial characterisation tests, galvanostatic experiments were performed. For these experiments the potentiostat accurately controls the current flow between the WE and the CE though the application of a potential difference between the RE and WE required to maintain the chosen current.

A galvanostatic scan was chosen over a potentiodynamic or a potentiostatic scan for the observation of stable pitting events as

galvanostatic tests alter the potential such that the current stays constant, as a result, corrosion reactions are driven at a consistent rate. On the other hand, by ramping up the potential or maintaining a constant potential, corrosion reactions may be driven too aggressively. Once initiated, the rate of corrosion should be matched to the HS-AFM imaging rate such that *in situ* HS-AFM measurements can be performed.

During galvanostatic tests localised corrosion was driven at a reduced rate such that it could be observed over longer periods of time both optically and by HS-AFM. Appropriate current flow values were identified from the initial potentiodynamic tests.

All experimental work was carried out at room temperature and humidity ($20 \pm 1^\circ\text{C}$, $45 \pm 10\%$). Post analysis of the current transients produced during the experiment was performed using Echem AnalystTM software (Gamry Instruments).

2.4 Scanning Electron Microscopy and Focussed Ion Beam Milling

The surface of the sample was imaged post-corrosion using a Helios NanoLab 600G: a dual beam (DB) microscope with combined SEM and focussed ion beam (FIB). High-resolution secondary electron images of the sample surface were taken at a potential of 5 kV and a current of 1.4 nA.

Areas of interest across the surface were also selected for FIB milling such that a better idea of the processes occurring beneath the surface could be obtained. FIB milling was performed using a gallium-ion beam at 30 kV and 2.8 nA.

3 Results

3.1 Electrochemical measurements

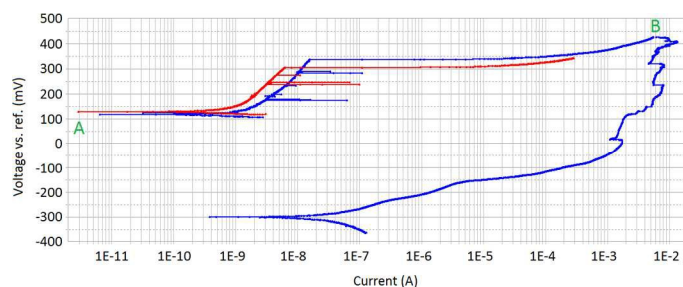


Fig. 2 Polarisation curves showing a forward potentiodynamic scan (-25 to +200 mV vs. OCP) of a sensitised AISI 304 stainless steel sample within 1% aqueous NaCl with a fresh surface, previous to corrosion events (red line, starting at point A). Also shown are forward (-25 to +300 mV vs. OCP) and reverse (+300 to -25 mV vs. OCP) potentiodynamic scans of a sample with a surface that had previously undergone localised corrosion events (blue line, starting at points A and B, respectively). Results are for a sample surface area of 0.13 cm^2 .



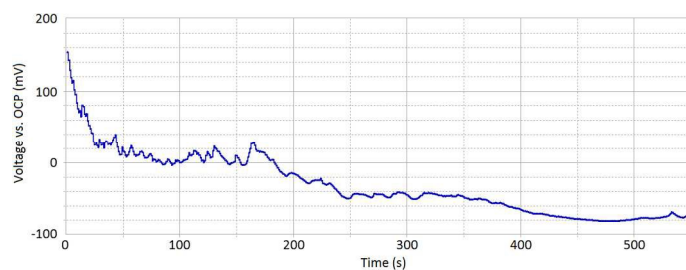


Fig. 3 A galvanostatic scan of a sensitised AISI 304 stainless steel sample within 1% aqueous NaCl taken at 0.05 mA. For a sample surface area of 0.13 cm².

Figure 2 shows polarisation curves for the sample before and after the sample surface had been damaged by localised corrosion events. The red line in Figure 2 shows the forward potentiodynamic scan for the undamaged surface. Within this scan, characteristic peaks in current that may be attributed to pitting events can be seen, beginning at approximately 240 mV (vs. Ag/AgCl) and resulting in measured currents of approximately 100 nA (sample surface area of 0.13 cm²). As the potential difference becomes more anodic, a considerable increase in the current is measured, indicating that corrosion reactions are occurring on the surface at an increased rate. Currents are not quoted as current densities as, with localised corrosion studies, the active area of the surface is unknown.

The blue line in Figure 2 shows the forward and reverse potentiodynamic scan for the sample after localised corrosion events have taken place. The sample was allowed sufficient time for full repassivation of the surface before this test was performed. During the forward scan (blue line starting at point A) it can be seen that the kinetic behaviour is not dissimilar from the undamaged surface (red line). However, the forward scan for the damaged surface has a slightly higher corrosion current density than that measured for the undamaged surface. This indicates that, despite the surface being free of any active corrosion sites, the surface may have a decreased passivity. This was also reflected by a slight decrease in the measured OCP, 131 mV (vs. Ag/AgCl) compared to 141 mV (Ag/AgCl).

The return potentiodynamic scan (the second section starting at point B of the blue line in Figure 2) reveals the effects measured immediately after localised corrosion events were initiated on the sample surface. The return scan is shifted considerably towards more cathodic potentials. In addition, the exchange current density has increased by orders of magnitude. This indicates that the sample surface contains active corrosion sites, demonstrating that the corrosion processes occurring on the surface are self-sustaining.

The measured OCP had also shifted significantly between the forward and the reverse potentiodynamic scan. The measured OCP immediately after the forward potentiodynamic scan (-339 mV vs. Ag/AgCl) was considerably more cathodic than immediately before (131 mV vs. Ag/AgCl), indicating a more active surface. A longer period of OCP measurement was taken directly after the reverse potentiodynamic scan returned a measured OCP of -352 mV (vs. Ag/AgCl).

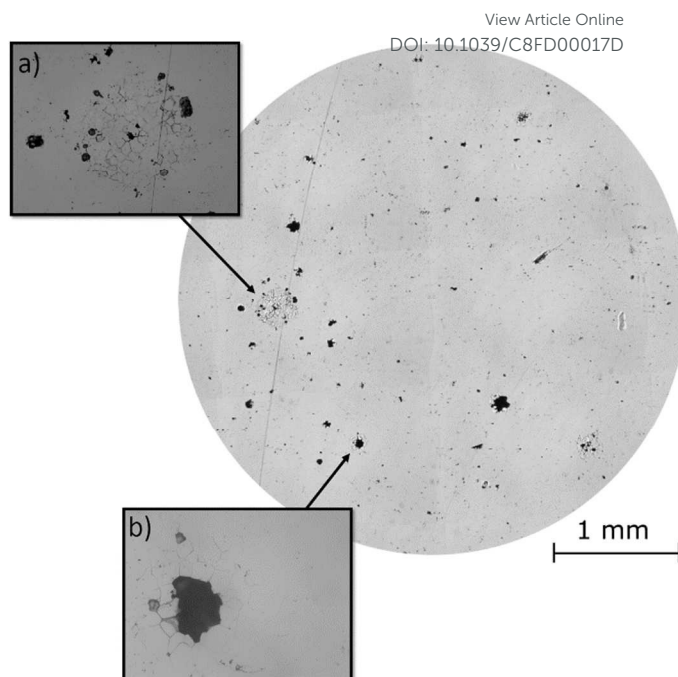


Fig. 4 A mosaic photo of the sensitised AISI 304 stainless steel sample surface post-corrosion, taken with a Leica optical microscope with a 5× optical objective, with additional photos of specific areas of interest taken by an Olympus BH2-UMA optical microscope at magnifications of: a) 20× and b) 50×.

Figure 3 shows a galvanostatic scan for a sample in which corrosion reactions are occurring on the surface. A current of 0.05 mA (sample surface area of 0.13 cm²) was chosen for this test. This was chosen subsequent to measuring the polarisation curve for the undamaged surface (red line Figure 2). The polarisation curve illustrates that a current of 0.05 mA is sufficient to sustain localised corrosion events on the surface of the sample at a rate suitable for investigation by HS-AFM.

The peaks and troughs present in the galvanostatic scan (Figure 3) suggests that corrosion kinetics across the sample surface are varying. As time increases, the overpotential required to sustain a constant current decreases. This indicates that corrosion events become more self-sustaining as the extent of corrosion progresses.

3.1.1 Optical Observations.

Optical observations performed *in situ* whilst the sample was polarised showed that multiple pitting sites propagate simultaneously on the sample surface. This is expected due to the large area of the exposed surface. Observations also revealed a number of characteristics for consideration when performing *in situ* HS-AFM measurements. IGA was seen to progress across the sample surface steadily at timescales suitable for observations by HS-AFM. However, gas evolution reactions occurring on the CE surface, and, in some instances of high overpotential, on the sample surface, resulted in the production of gas bubbles. This may interfere



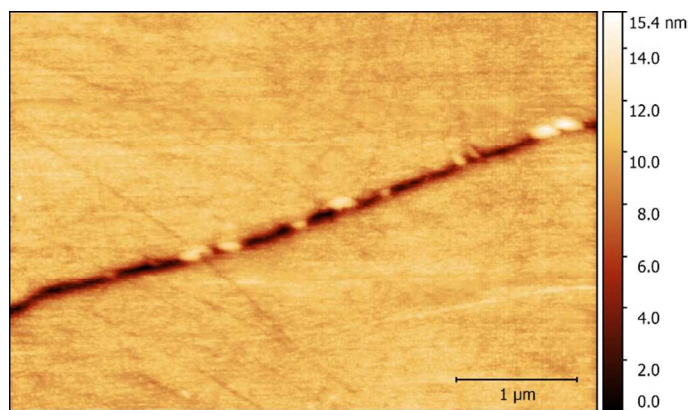


Fig. 5 A topographic map showing inclusions along a GB in sensitised AISI 304 stainless steel within 1% aqueous NaCl.

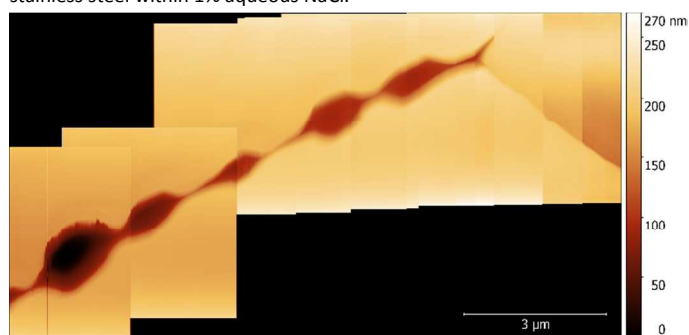


Fig. 6 A topographic map of a number of pits formed along a GB in sensitised AISI 304 stainless steel within 1% aqueous NaCl.

with the cantilever during HS-AFM measurements. Additional interference may be caused due to corrosion products on the surface.

Post-corrosion optical observations of the samples were made using an optical microscope (Figure 4). These images revealed the intergranular nature of the localised corrosion events occurring on the surface. The severity of IGA gave an indication of the degree of thermal sensitisation across the surface. Pitting corrosion events were also present on the sample surface, though larger pits had appeared to have formed from a combination of pitting corrosion and IGA events.

3.2 HS-AFM

Given the intergranular nature of the localised corrosion events, HS-AFM measurements were primarily made along GBs. Numerous GB inclusions identified as carbides were observed along sensitised GBs, as seen in Figure 5. These were seen to stand in relief of the surface, due to the difference in hardness of the two regions during mechanical polishing¹². The thermal sensitisation of Type 304 stainless steel occurs due to precipitation of chromium carbides along GBs^{2,12,33–35}. This results in a depletion of chromium in the areas surrounding the GB, which in turn reduces the oxidation resistance, causing sensitivity to

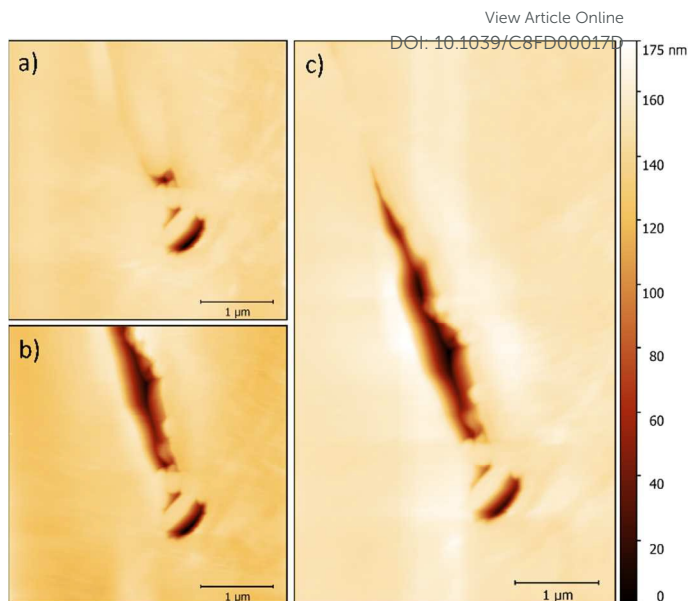


Fig. 7 Topographic maps showing a GB in sensitised AISI 304 stainless steel within 1% aqueous NaCl: a) before formation of intergranular pit, b) after formation of intergranular pit, and c) the full intergranular pit formed.

IGA¹². GBs are also softer as a result and therefore are preferentially polished, this is evident from their hollow appearance in Figure 5.

Whilst imaging along GBs just ahead of the corrosion front, a number of small intergranular pits were identified, in some areas these occurred in chains, as seen in Figure 6. By monitoring GBs surrounding corrosion events, the formation of an intergranular pit was observed. Figures 7a and 7b show before and after topographic maps of an intergranular pit forming at a GB during a galvanostatic scan. The feature formed between two subsequent HS-AFM frames. Given that the HS-AFM was collecting images at a rate of 2 s^{-1} , the timeframe at which this reaction occurred can be deduced as $\leq 0.5 \text{ s}$.

Table 1 A table of HS-AFM measurements and calculated values

Parameter	Measured Value	Units
Projected Area	1.054×10^{-12}	m ²
Depth	1.228×10^{-7}	m
Volume	5.03×10^{-20}	m ³
Parameter	Calculated Value	Units
Mass of Iron Dissolved	3.96×10^{-11}	g
Ionic Flux	1.35×10^{-2}	moles m ⁻² s ⁻¹
Current Density	2.6×10^3	A m ⁻²

A map of the full intergranular pit was produced by stitching together two HS-AFM frames (Figure 7c). The sensitised GB is not clearly visible within this image as a result of the larger height scale in comparison with Figure 5. Post processing of this topography produced approximate values for the volume of material dissolved. Using this data the resultant ionic flux and current transients were calculated using Faraday's Law of Electrolysis:



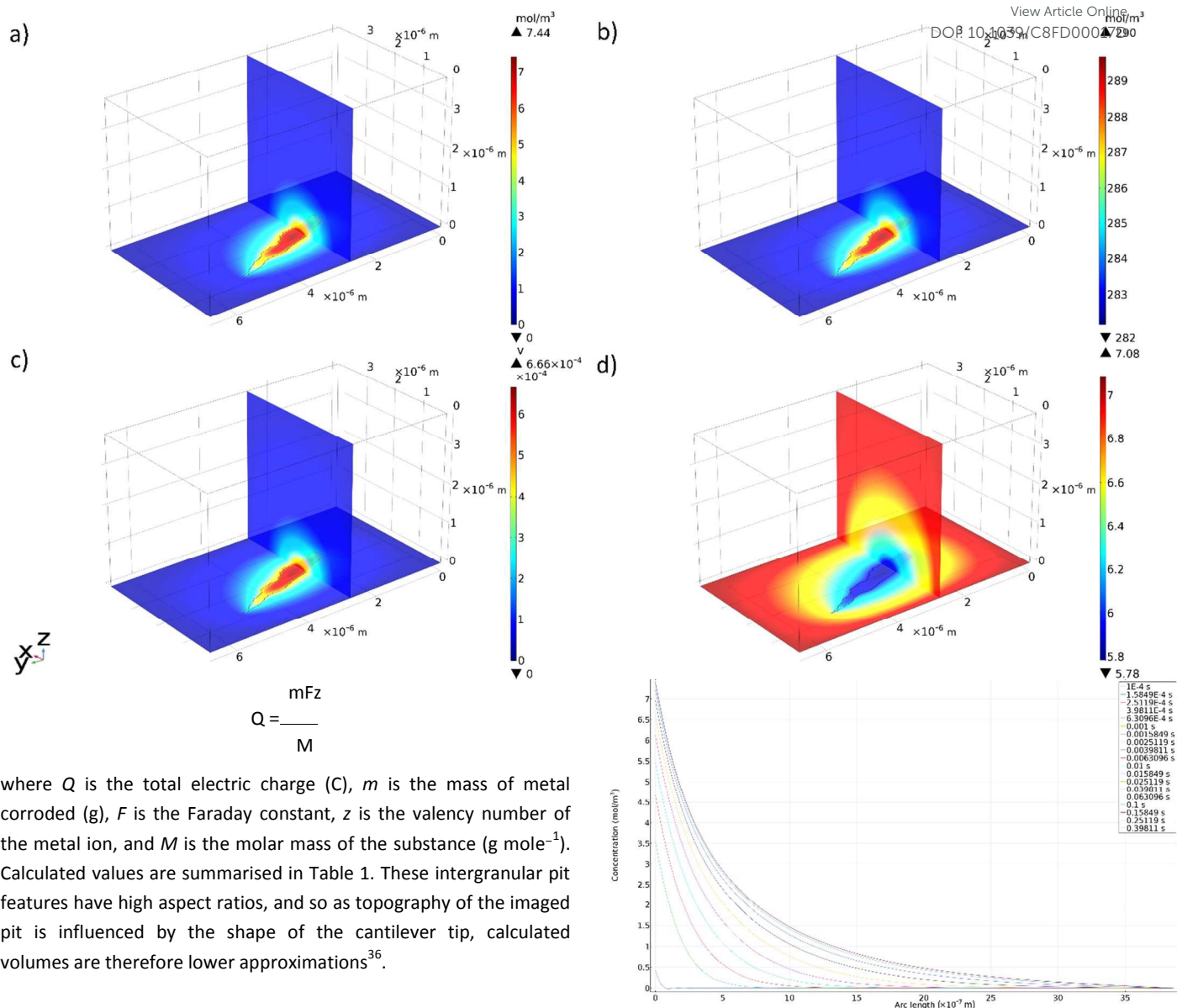


Fig. 10 A line plot produced in COMSOL showing the concentration of Fe^{2+} ions along a line normal to the metal surface, starting from the centre of the pit extending out to the bulk solution, for different time steps.

where Q is the total electric charge (C), m is the mass of metal corroded (g), F is the Faraday constant, z is the valency number of the metal ion, and M is the molar mass of the substance (g mole^{-1}). Calculated values are summarised in Table 1. These intergranular pit features have high aspect ratios, and so as topography of the imaged pit is influenced by the shape of the cantilever tip, calculated volumes are therefore lower approximations³⁶.

3.2.1 Computational Modelling.

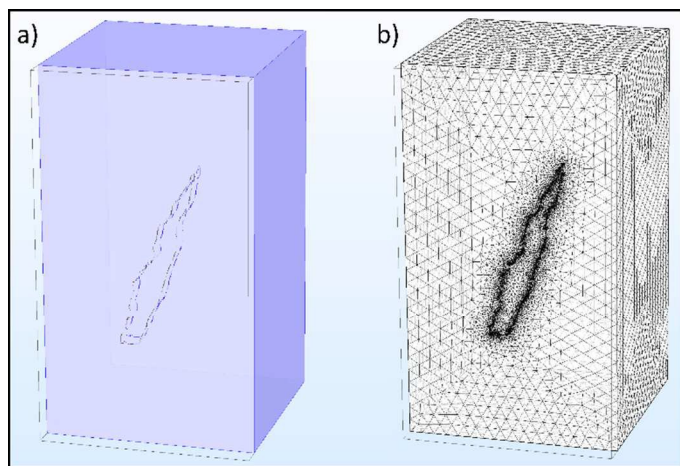


Fig. 8 Screen captures showing: a) The final 3D geometry created in COMSOL. The water sub-domain is highlighted in blue, and b) The final meshed geometry created in COMSOL, the mesh was created over the water sub-domain.

Topography data of the intergranular pit shown in Figure 7c was imported into COMSOL as geometry and used for subsequent simulations. Modelling was carried out following the assumption that this change in topography could be reasonably attributed to corrosion.

The 3D geometry used in the model is shown in Figure 8a. This geometry was meshed by COMSOL, as seen in Figure 8b, the chosen mesh consisted of 239,226 domain elements, 17,514 boundary elements and 1,011 edge elements.

Selected results from the time-dependent solution are shown in Figures 9a - 9d. Figure 9a shows the final concentration of Fe^{2+} ions, the concentration is seen to diffuse radially outwards from the intergranular pit site. A line plot was produced illustrating the time taken to converge to the final concentration distribution of Fe^{2+} ions



in the adjacent electrolyte, shown in Figure 10. This plot demonstrates that the system reaches a radial diffusion regime in under 0.01 s, as time steps beyond this have identical concentration profiles.

Figure 9b shows a local accumulation of Cl^- ions in the areas immediately adjacent to the reaction area. This is a consequence of the concentration of Fe^{2+} cations in that area^{3,10,14}. As the pit is anodic with respect to the cathodic surface surrounding it, electroneutrality of the pit electrolyte requires an increased abundance of Cl^- counter-ions^{3,10,14}. The relative enhancement in Cl^- concentration reconstructed here is small as the pre-existing concentration within the bulk electrolyte is large. electroneutrality of the pit electrolyte requires an increased abundance of Cl^- counter-ions^{3,10,14}. The relative enhancement in Cl^- concentration reconstructed here is small as the pre-existing concentration within the bulk electrolyte is large.

A plot illustrating the variation of pH (calculated from H^+ concentration) in the electrolyte was also produced by the time-dependent solution in COMSOL, shown in Figure 9d. The areas surrounding the intergranular pit became slightly acidic with respect to the bulk solution due to ionic migration.

3.3 Scanning Electron Microscopy and Focussed Ion Beam Milling

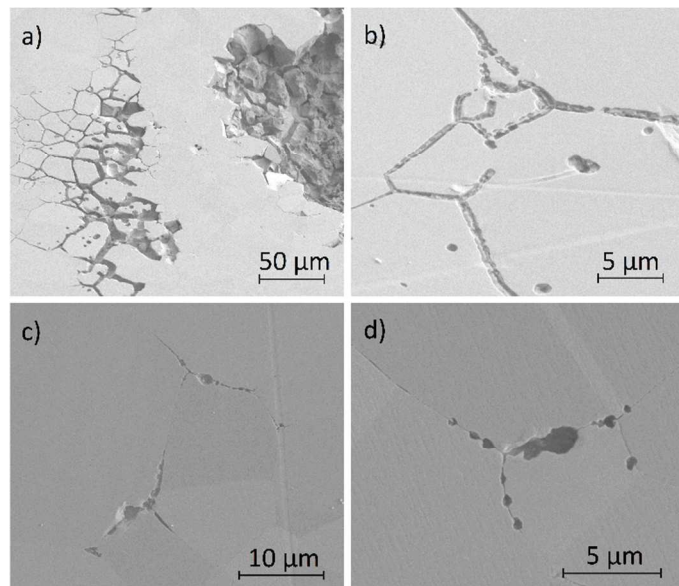


Fig. 11 A series of secondary electron images of different areas of the corroded sensitised AISI 304 stainless steel surface showing localised corrosion. Images a) and b) were taken at a tilt of 52° , c) and d) were taken at a tilt of 0° .

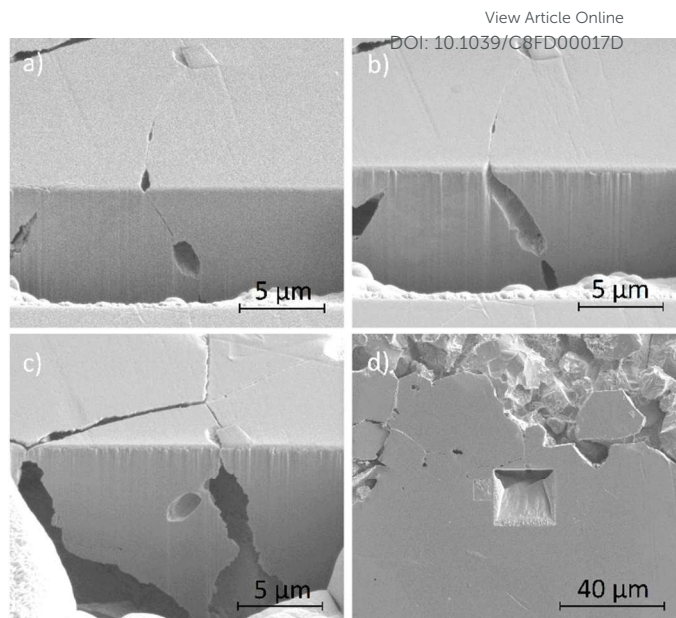


Fig. 12 Secondary electron images taken as a part of a series of 2-5 μm thick slices into a region of the material surrounding an intergranular pit using FIB. Images a), b) and c) were taken at a tilt of 52° , d) was taken at a tilt of 0° .

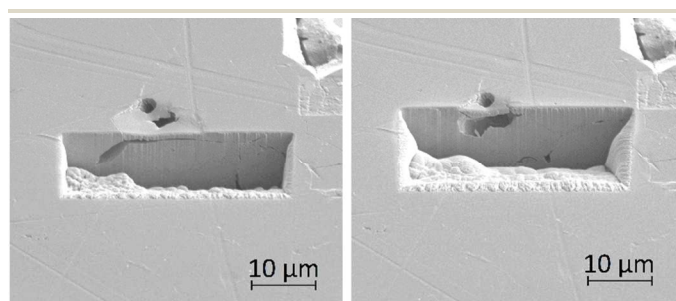


Fig. 13 Secondary electron images taken as a part of a series of 2-5 μm thick slices into a region of the material surrounding an intragranular pit using FIB, taken at a tilt of 52° .

Figures 11a - 11d show secondary electron images of the corroded surface. Figures 11a and 11b demonstrate the severity of IGA at some areas across the surface, where the GB has been corroded preferentially by the electrolyte. Within these figures, pitting corrosion is also observed within grains.

Chains of intergranular pits were observed along GBs just ahead of the corrosion front, in areas such as those seen in Figure 11a, though some were also observed in isolated areas on the sample surface, as seen in Figures 11c and 11d.

Figures 12a - 12d show secondary electron images of an area adjacent to a large pit where an intergranular pit was studied by FIB milling. Figures 12a - 12c were taken sequentially as the FIB milling process progressed. The intergranular pit was revealed to be a surface opening to a much larger void underneath the surface, where corrosion had dissolved much of the material surrounding the GBs. Additional smaller voids were also observed along GBs underneath the sample surface.

FIB milling was carried out in the same manner in an area containing an intragranular pit, shown in Figure 13. This figure



demonstrates an undercutting of the grain. Corrosion reactions have attacked the bulk of the grain first, propagating outwards from the pit at the surface.

4 Discussion

Numerous intergranular pits were observed using an optical microscope, HS-AFM and SEM imaging techniques. By collecting data concerning the intergranular pit chains using a number of different methods a more complete picture of the sequence of events was achieved.

The intergranular pits encountered within this work are similar in morphology to those observed by electrochemical AFM by Martin *et al.* in 2007¹⁸. However, within Martin's work, investigations were carried out on a sample of sensitised Type 304L stainless steel¹⁸. This type of material does not contain sensitised GBs, and so pit initiation events will likely differ from the work presented here¹⁸.

HS-AFM measurements revealed that intergranular pits form as chains along the GB (Figure 6). This was due to preferential corrosion of the GB, as a result of thermal sensitisation. During the thermal sensitisation process of AISI 304 stainless steel, chromium carbides precipitate along the GBs, as observed by HS-AFM in Figure 5^{2,33-35}. This causes the local composition in the areas surrounding the GBs to be depleted in chromium, substantially reducing the GBs local resistance to corrosion^{2,26,33-35,37}. Previous works have suggested that GB inclusions, such as chromium carbides, may act as initiation sites for pitting corrosion¹¹. By comparison of the topographic maps collected showing the chain-like intergranular pits (Figure 6) and the carbide distribution within the GB (Figure 5), it is apparent that there are similarities in their distributions. However, from the observations made, it cannot be conclusively stated that the intergranular pits observed initiated at GB inclusions, or indeed between GB inclusions, as suggested in other works¹².

Optical images (Figure 4) in combination with SEM images (Figure 11a) revealed on a larger scale that these intergranular pits were a common feature in the areas surrounding larger pits, just ahead of the corrosion front. Investigation by FIB milling (Figures 12a - 12d) demonstrated that intergranular pits are small surface entryways to much larger voids produced by IGA present beneath the surface. It is unclear, however, whether this undercutting is a result of the intergranular pit acting as an initiation site leading to GB dissolution, or that this is a result of corrosion progressing along GBs from the larger pit nearby (as seen in Figure 12d).

The formation of an intergranular pit was observed *in situ* by HS-AFM, as seen in Figures 7a and 7b taken before and after the pitting event, respectively. This data was collected ahead of the corrosion front. The full extent of this pit may not have been measured by HS-AFM due to the high aspect ratio of the pit aperture to pit depth. This observation, combined with SEM images of intergranular pits in areas at a distance from larger pits (Figures 11c and 11d) suggest that intergranular pits may act as initiation events that lead to larger scale IGA. The secondary electron image in Figure 11b shows earlier stages of IGA formed from numerous intergranular pits joined together,

further substantiating the suggested sequence of events, though further investigation is required.

Optical data taken post-corrosion of the area investigated by HS-AFM (Figure 4), revealed that the intergranular pit studied in Figure 7c was no longer present on the surface, as the corrosion front had progressed across the site to form a larger pit (Figure 4b). This highlighted the importance of *in situ* observation techniques, such as HS-AFM, as these measurements would not have been possible using *ex situ* methods.

By modelling the system using HS-AFM and electrochemical data, it was found that the system reached a radial diffusion regime in under 0.01 s, resulting in fast dissolution of material and rapid diffusion of corrosion products away from the pit site. In this model corrosion product speciation was not simulated, this simplification was supported by this result, in combination with observations that the event transient was very short lived, and that no corrosion product was apparent from the HS-AFM measurements (Figure 7).

Results from the computational model (Figure 9) also showed an increase in Cl⁻ ion concentration and a reduction in pH (calculated by H⁺ concentration) in the areas surrounding the pit site. In experimental studies of pitting, enhanced local acidification is known to be a result of hydrolysis of the Fe²⁺ ions dissolving^{3,10,14}. Local accumulation of Cl⁻ ions in combination with pH reduction is a key factor in the propagation of pitting corrosion, preventing repassivation^{3,10}.

The current density (averaged over the assumed time interval) produced by this event was calculated to be considerable ($2.6 \times 10^3 \text{ A m}^{-2}$). However, as a result of the extremely small scale at which it occurred, the pitting current during the event was very small (approximately $2.7 \times 10^{-9} \text{ A}$), as was the total charge transfer ($1.37 \times 10^{-9} \text{ C}$). Multiple pitting sites were observed to propagate simultaneously on the sample surface, illustrated in Figure 4. As such, the current transient signals produced by events such as the one observed, are dwarfed by the current from other much larger stable pitting sites. The calculated current transient is similar to those measured in other works where single transients for pitting events were successfully measured^{14,15}. Burstein *et al.* measured current transients for isolated metastable pitting events reaching nA values, these measurements were taken for an unsensitised sample of Type 304 stainless steel^{14,15}.

Intragranular pits were also present across the sample surface, as observed within Figure 11a collected by SEM. These pits were round in appearance rather than the elongated shape observed for intergranular pits. Some intragranular pits appeared to have a similar morphology to that of a "satellite" pit, observed by Street *et al.*¹³. FIB milling was performed in an area containing an intragranular pit, shown in Figure 13. This study revealed undercutting of the material beneath the surface. These observations differed from excavations of intergranular pitting, as corrosion appeared to progress outwards from the pit through the bulk of the grain as opposed to inwards from the GB.



Larger pits appeared to have been formed by a combination of intergranular and intragranular pitting, Figure 11a, however the severity of IGA appeared to be the leading factor in producing the pits on this scale.

Initiation events of intragranular pits were not seen during *in situ* HS-AFM measurements or optical monitoring of the sample surface. Pitting events are known to often initiate at discontinuities on the surface, such as inclusions. Further investigation is required to identify the intragranular sites at which these pits likely initiated, such that intragranular pit initiation *in situ* might be observed.

Further work is required to build a more complete picture of events. Additional observations performed *in situ* of corrosion initiation events will help to provide a more statistically significant result. Further excavation by FIB milling will also be performed in future work. These studies will be performed at different stages of localised corrosion events in order to build up a better picture of how the system progresses.

Techniques implemented within this study do not provide any information about the local chemistry on the sample surface. The next step is therefore to perform energy-dispersive X-ray spectroscopy (EDX) of areas surrounding GBs and inclusions. This may be extended to a more detailed study performed by atom probe tomography (APT) and high-resolution transmission electron microscopy (HR-TEM).

Alterations to the methodology of this study are also considered:

- Build-up of corrosion products on the sample surface resulted in loss of resolution within some frames whilst performing *in situ* HS-AFM. A custom-built flow-through cell is currently being designed with the aim of minimising this. This modification will also result in the maintenance of the concentration of Cl⁻ ions, which may influence the rate at which corrosion events take place.
- An intergranular pit initiation event was observed to occur within a time interval shorter than that measured by HSAFM. The contact mode HS-AFM has the capability to reach much higher frame rates than those used within this study. Application of this capability will be implemented in future observations.
- In order to draw parallels between measured current transients and initiation events observed by HS-AFM, it is required that the active area of sample be reduced considerably in size, as in other works^{3,10,14}. This, however, introduces a number of challenges, such as crevice corrosion events.

5 Conclusions

Within this study localised corrosion events were investigated occurring on thermally sensitised AISI 304 stainless steel in an aqueous solution of 1% NaCl. The sample surface was polarised by performing potentiodynamic and galvanostatic scans. A number of large pits were observed to form across the sample surface. Post-corrosion analysis of the surface by SEM revealed that these pits

were a result of severe IGA working in combination with intragranular pitting events. Intragranular pits present across the sample surface were round in appearance rather than the elongated shape observed for intergranular pits.

Intergranular pits were observed to occur in chains along GBs, appearing to be an early form of severe IGA observed in some areas across the surface. Investigation by FIB milling revealed that in some areas these pits are small surface entryways to much larger voids produced by IGA present beneath the surface. FIB milling was performed in an area containing an intragranular pit revealed undercutting that differed from excavations of intergranular pitting, as corrosion appeared to progress outwards from the pit through the bulk of the grain as opposed to inwards from the GB.

HS-AFM observations were performed *in situ* showing the formation of an intergranular pit in under 0.5 s. Information from this event in combination with electrochemical data was fed into a computational model using COMSOL MP software. The model calculated that the system reached a radial diffusion regime in under 0.01 s. Results were used to generate 3D plots that illustrated local acidification and a build up of chloride ions in the areas adjacent to the pitting site.

Multiple techniques were combined to produce a multifaceted picture of the electrochemical events occurring on the surface. Results demonstrated the potential of detailed *in situ* surface techniques, such as HS-AFM, working in combination with *ex situ* techniques such as FIB milling and SEM that allow for subsurface investigation.

Acknowledgements

The authors would like to thank COMSOL for providing a trial of COMSOL MP 3.5a with the allowance to publish results produced in the software, and for the provision of technical support throughout the modelling process. Additional thanks to Celine Ramon, as well as Sammi Shamma (account manager), Andrew Young (COMSOL support) and Dr. Annette Pahl (Technical Support Engineer) for their assistance.

Thanks also to Mr. Freddie Russell-Pavier for his discussions and help with modelling. Additional thanks to the physics workshop, the interface analysis centre (IAC) and the NSQI low noise labs at the University of Bristol. As well as the financial support of the National Nuclear Laboratory (NNL), the Engineering and Physical Sciences Research Council (EPSRC), and the Royal Academy of Engineering.

References

- 1 G. Du, J. Li, W. Wang, C. Jiang and S. Song, *Corrosion Science*, 2011, **53**, 2918–2926.
- 2 R. Cottis, *Guides to good practice in corrosion control* A "Tstress" corrosion cracking, 2000.
- 3 W. Tian, S. Li, N. Du, S. Chen and Q. Wu, *Corrosion Science*, 2015, **93**, 242–255.



- 4 R. Cottis *et al.*, *Shreir's Corrosion*, Elsevier Science, 2009.
- 5 L. Calabrese, L. Bonaccorsi, M. Galeano, E. Proverbio, D. Di Pietro and F. Cappuccini, *Corrosion Science*, 2015, **98**, 573–584.
- 6 S. Pondichery, *A study on the effect of magnetic field on the corrosion behavior of materials*, The University of Texas at Arlington, 2014.
- 7 A. Yagati, J. Min and J. Choi, *Mod. Electrochem. Methods Nano Surf. Corros. Sci.*, Mahmood Aliofkhaezai, 2014.
- 8 B. Nimmo and G. Hinds, *Beginners guide to corrosion*, 2003.
- 9 M. Faller and P. Richner, *Materials and Corrosion*, 2003, **54**, 331–338.
- 10 W. Tian, N. Du, S. Li, S. Chen and Q. Wu, *Corrosion Science*, 2014, **85**, 372–379.
- 11 N. Laycock and S. White, *Journal of the Electrochemical Society*, 2001, **148**, B264–B275.
- 12 R. E. Williford, C. F. Windisch and R. H. Jones, *Materials Science and Engineering: A*, 2000, **288**, 54–60.
- 13 S. R. Street, N. Mi, A. J. Cook, H. B. Mohammed-Ali, L. Guo, T. Rayment and A. J. Davenport, *Faraday discussions*, 2015, **180**, 251–265.
- 14 G. Burstein and S. Mattin, *Philosophical magazine letters*, 1992, **66**, 127–131.
- 15 G. Burstein and S. Vines, *Journal of The Electrochemical Society*, 2001, **148**, B504–B516.
- 16 L. Liu, Y. Li and F. Wang, *Electrochimica Acta*, 2008, **54**, 768–780.
- 17 J.-y. Jiang, Y. Liu, H.-y. Chu, D. Wang, H. Ma and W. Sun, *Materials*, 2017, **10**, 903.
- 18 F. Martin, C. Bataillon and J. Cousty, *Corrosion Science*, 2008, **50**, 84–92.
- 19 G. Binnig, C. F. Quate and C. Gerber, *Physical review letters*, 1986, **56**, 930.
- 20 O. Payton, L. Picco, D. Robert, A. Raman, M. Homer, A. Champneys and M. Miles, *Nanotechnology*, 2012, **23**, 205704.
- 21 H.-S. Liao, K.-Y. Huang, I.-S. Hwang, T.-J. Chang, W. W. Hsiao, H.-H. Lin, E.-T. Hwu and C.-S. Chang, *Review of Scientific Instruments*, 2013, **84**, 103709.
- 22 G. Schitter, K. J. Astrom, B. E. DeMartini, P. J. Thurner, K. L. Turner and P. K. Hansma, *IEEE Transactions on Control Systems Technology*, 2007, **15**, 906–915.
- 23 O. D. Payton, *PhD thesis*, University of Bristol, 2012.
- 24 O. Payton, L. Picco and T. Scott, *International Materials Reviews*, 2016, **61**, 473–494.
- 25 A. Humphris, M. Miles and J. Hobbs, *Applied physics letters*, 2005, **86**, 34106–34106.
- 26 A. Laferrere, R. Burrows, C. Glover, R. N. Clark, O. Payton, L. Picco, S. Moore and G. Williams, *Corrosion Engineering, Science and Technology*, 2017, **52**, 596–604.
- 27 A. Pyne, W. Marks, L. M. Picco, P. G. Dunton, A. Ulcinas, M. E. Barbour, S. B. Jones, J. Gimzewski and M. J. Miles, *Archives of histology and cytology*, 2009, **72**, 209–215.
- 28 A. D. Warren, A. I. Martinez-Ubeda, O. D. Payton, L. Picco and T. B. Scott, *Microscopy Today*, 2016, **24**, 52–55.
- 29 S. Salleh, *PhD thesis*, University of Manchester, 2012.
- 30 D. Macdonald and G. Engelhardt, *Shreir's Corrosion*, Elsevier BV, 2010.
- 31 R. Burrows, *PhD thesis*, University of Manchester, 2013.
- 32 J. Buffle, Z. Zhang and K. Startchev, *Environmental science & technology*, 2007, **41**, 7609–7620.
- 33 A. King, G. Johnson, D. Engelberg, W. Ludwig and J. Marrow, *Science*, 2008, **321**, 382–385.
- 34 M. Breimesser, S. Ritter, H.-P. Seifert, S. Virtanen and T. Suter, *Corrosion Science*, 2012, **55**, 126–132.
- 35 T. Wong, 1986.
- 36 D. Ricci and P. C. Braga, *Atomic Force Microscopy*, Springer, 2004, pp. 25–37.
- 37 C. Moss and J. Sykes, 1986.

