


ARTICLE

DOI: [10.1038/s41467-018-03911-8](https://doi.org/10.1038/s41467-018-03911-8)

OPEN

Analysis of predicted loss-of-function variants in UK Biobank identifies variants protective for disease

Connor A. Emdin ^{1,2,3}, Amit V. Khera et al.[#]

Less than 3% of protein-coding genetic variants are predicted to result in loss of protein function through the introduction of a stop codon, frameshift, or the disruption of an essential splice site; however, such predicted loss-of-function (pLOF) variants provide insight into effector transcript and direction of biological effect. In >400,000 UK Biobank participants, we conduct association analyses of 3759 pLOF variants with six metabolic traits, six cardiometabolic diseases, and twelve additional diseases. We identified 18 new low-frequency or rare (allele frequency < 5%) pLOF variant-phenotype associations. pLOF variants in the gene *GPR151* protect against obesity and type 2 diabetes, in the gene *IL33* against asthma and allergic disease, and in the gene *IFIH1* against hypothyroidism. In the gene *PDE3B*, pLOF variants associate with elevated height, improved body fat distribution and protection from coronary artery disease. Our findings prioritize genes for which pharmacologic mimics of pLOF variants may lower risk for disease.

Correspondence and requests for materials should be addressed to S.K. (email: skathiresan1@mgh.harvard.edu).

[#]A full list of authors and their affiliations appears at the end of the paper.

A focused investigation of predicted loss-of-function (pLOF) variants provides several advantages when compared with analysis of other types of variants. First, analysis of pLOF variants may allow for the direct identification of a gene rather than a locus containing many candidate genes¹. Second, pLOF variants provide directionality of effect, unlike non-coding regulatory variants which may increase or decrease expression of a given gene. Third, identification of pLOF variants which protect against disease may aid with prioritization of therapeutic target genes (e.g., the recent development of inhibitors of PCSK9 or ANGPTL3 which mimic human pLOF mutations protective against cardiovascular disease)^{2–6}.

Here, we analyse pLOF variants in UK Biobank and other datasets to identify genes for which pharmacologic inhibition may protect against disease. We identify associations of pLOF variants with cardiometabolic and immune disease, prioritizing the genes *GPR151*, *IL33*, *GSDMB*, *IFIH1*, and *PDE3B* as potential therapeutic targets.

Results

Analysis of loss-of-function variants. In 405,569 individuals in UK Biobank (335,660 individuals of European ancestry and 69,909 individuals of Non-European ancestry, Supplementary Table 1), we analyzed the association of 3759 pLOF variants with six metabolic traits [body mass index (BMI), waist-to-hip ratio adjusted for body mass index (WHRadjBMI), height, systolic blood pressure (SBP), diastolic blood pressure (DBP), forced expiratory volume to forced vital capacity ratio (FEV1/FVC)], six cardiometabolic diseases (coronary artery disease, type 2 diabetes, atrial fibrillation, stroke, heart failure, venous thromboembolism) and twelve diseases with more than 5000 cases (allergic rhinitis, asthma, anxiety, breast cancer, cataract, cholelithiasis, depression, hypothyroidism, gastric reflux, osteoporosis, osteoarthritis, and psoriasis). The Variant Effect Predictor and associated LOFTEE plugin^{7,8} algorithms were used to annotate variants which were pLOF (1) nonsense mutations that resulted in early termination of a protein; (2) frameshift mutations due to insertions or deletions of DNA; or (3) splice-site mutations which result in an incorrectly spliced protein. For coronary artery disease, we pooled

UK Biobank estimates with estimates from the CARDIoGRAM Exome consortium⁹. For height, we pooled UK Biobank estimates with estimates from the GIANT Exome Consortium¹⁰. Variants with a $P < 5.5 \times 10^{-7}$ [$0.05/(24 \text{ outcomes} \times 3759 \text{ variants})$] in the combined analysis were considered significant. Quantile–quantile analysis was used to examine for the presence of population stratification. No evidence of inflation was observed (inflation factors < 1.1 ; Supplementary Fig. 1).

We identified 18 new low-frequency or rare (<5%) pLOF variants associated with traits and diseases in UK Biobank (Table 1 and Supplementary Table 2). We also discovered 26 new common frequency ($\geq 5\%$) pLOF variants associated with UK Biobank phenotypes (Supplementary Table 3). Variants identified within the same locus in prior genome-wide association studies ($+500 \text{ Kb}$; 1 Mb total) for the same phenotype are provided (Supplementary Tables 4 and 5).

A locus-wide conditional analysis ($\pm 500 \text{ kb}$ of the pLOF variant) was performed to determine the extent to which the identified pLOF variant signal was independent of other genetic variation at the locus. Independence of pLOF variants may provide increased confidence for a causal association. Independent variants at the loci of rare and low frequency pLOFs are reported in Supplementary Data 1 and independent variants at the loci of common frequency pLOFs are reported in Supplementary Data 2. Of the 16 low frequency pLOF variants outside of the MHC locus, 14 were identified as independent variants in the locus-wide conditional analysis. These include the *IL33* variant rs146597587, the *GPR151* variant rs114285050, the *IFIH1* variant rs35337543, and the *PDE3B* variant rs15009066 which are further analyzed in the text of this manuscript. Below, we highlight several of these associations.

***GPR151*, obesity, and type 2 diabetes.** In *GPR151* (encoding G-protein coupled receptor 151), the p.Arg95Ter variant (rs114285050, allele frequency 0.8% in European ancestry) was associated with reduced BMI (beta -0.07 standard deviations, -0.36 kg/m^2 , $P = 4.9 \times 10^{-8}$). We replicated this association in an independent cohort, the Myocardial Infarction Genetics Consortium (MIGen), where p.Arg95Ter carriers had reduced

Table 1 Predicted loss-of-function variants with minor allele frequency <5% which are significantly associated with traits or diseases in UK Biobank

Outcome	Gene	pLOF variant	Location	EA	RA	AA change	Freq (%)	Beta	SE	P-value	Novel?	MHC locus?
Asthma	FLG	rs61816761	1:152285861	A	G	p.Arg501Ter	1.51	0.21	0.03	1.51×10^{-15}	Yes	No
Asthma	HLA-DQB1	rs28688207	6:32628660	C	T	Splice Acceptor c.773–1A > G	3.14	–0.17	0.02	3.11×10^{-15}	Yes	Yes
Asthma	IL33	rs146597587	9:6255967	C	G	Splice Acceptor c.487–1G > C	0.44	–0.54	0.06	7.79×10^{-17}	No ¹⁵	No
BMI	GPR151	rs114285050	5:145895394	A	G	p.Arg95Ter	0.78	–0.07	0.01	4.89×10^{-8}	Yes	No
BMI	PKHD1L1	rs533623778	8:110523131	T	C	p.Arg769Ter	1.0×10^{-4}	5.30	0.99	4.45×10^{-8}	Yes	No
DBP	ENPEP	rs33966350	4:111431444	A	G	p.Trp413Ter	1.19	0.06	0.01	8.12×10^{-10}	No ³⁹	No
DBP	BTN3A2	rs58367598	6:26370833	G	T	Splice Donor c.715 + 2T > G	3.75	0.03	0.01	2.03×10^{-8}	Yes	Yes
DBP	TMC3	rs150843673	15:81624929	T	G	p.Ser1045Ter	2.14	0.05	0.01	8.16×10^{-9}	Yes	No
Height	PDE11A	rs76308115	2:178879181	A	G	p.Arg57Ter	0.52	0.07	0.01	6.20×10^{-11}	Yes	No
Height	CLHC1	rs114931154	2:55407644	T	A	Splice Donor c.1384 + 2T > A	1.26	–0.05	0.01	1.54×10^{-11}	Yes	No
Height	CCDC66	rs150364083	3:56628033	T	C	p.Arg427Ter	0.58	0.05	0.01	2.09×10^{-7}	Yes	No
Height	DAP	rs201354802	5:10761153	A	C	p.Glu10Ter	0.24	0.13	0.02	1.68×10^{-8}	Yes	No
Height	TRIM40	rs115651142	6:30115320	T	G	Splice Donor c.602 + 1G > T	0.63	–0.08	0.01	1.16×10^{-9}	Yes	Yes
Height	MICA	rs181430930	6:31378575	A	G	Splice Donor c.286 + 1G > A	0.26	–0.12	0.02	7.87×10^{-8}	Yes	Yes
Height	PDE3B	rs150090666	11:14865399	T	C	p.Arg783Ter	0.06	0.24	0.04	9.32×10^{-9}	Yes	No
Height	APOLD1	rs202116412	12:12879031	A	G	Splice Donor c.96 + 1G > A	0.03	0.12	0.02	3.06×10^{-8}	Yes	No
Hypothyroidism	IFIH1	rs35337543	2:163136505	G	C	Splice Donor c.1641 + 1G > C	1.45	–0.27	0.04	2.95×10^{-9}	Yes	No
Psoriasis	ZKSCAN3	rs73387810	6:28318166	A	G	Splice Donor c.–63 + 1G > A	0.86	0.55	0.08	4.18×10^{-11}	Yes	Yes
Psoriasis	EGFL8	rs141826798	6:32134395	G	C	p.Arg74Ter	0.53	0.90	0.08	2.19×10^{-26}	Yes	Yes
SBP	ENPEP	rs33966350	4:111431444	A	G	p.Trp413Ter	1.19	0.06	0.01	3.46×10^{-9}	No ³⁹	No
SBP	GEM	rs138582164	8:95264265	A	G	p.Arg199Ter	0.04	0.30	0.06	1.93×10^{-7}	No ⁴⁰	No
WHRadjBMI	PYGM	rs116987552	11:64527223	A	G	p.Arg50Ter	0.39	0.09	0.02	1.32×10^{-7}	Yes	No

Beta in terms of standard deviations and reported for the effect allele

pLOF predicted loss-of-function, EA effect allele, RA reference allele, AA Change amino acid change, Freq(%) Frequency(%); BMI body mass index, DBP diastolic blood pressure, SBP systolic blood pressure, WHRadjBMI waist-to-hip ratio adjusted for body mass index

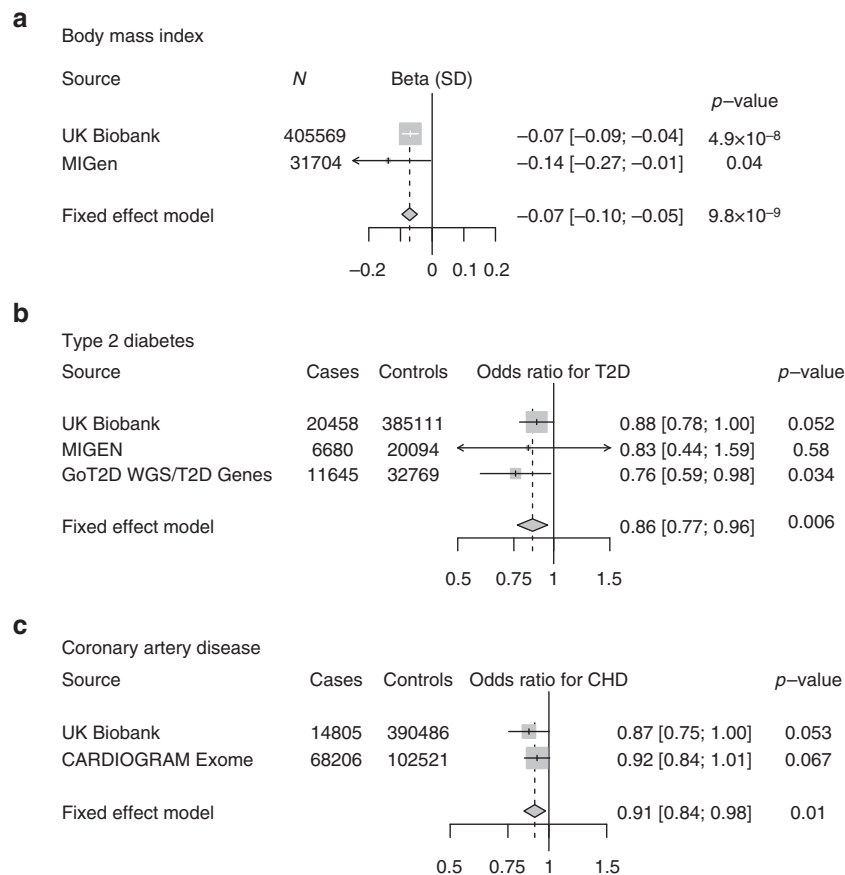


Fig. 1 Association of a loss-of-function variant (p.Arg95Ter) in *GPR151* with **a** body mass index, **b** type 2 diabetes, and **c** coronary artery disease. Estimates were derived in UK Biobank using logistic regression, adjusted for age, sex, ten principal components of ancestry, and array type

BMI (beta -0.14 , $P = 0.04$; pooled beta -0.07 , $P = 9.8 \times 10^{-9}$; Fig. 1). UK Biobank participants who carry one copy of p.Arg95Ter were at 12% lower odds of clinical obesity ($\text{BMI} \geq 30 \text{ kg/m}^2$). As obesity is a causal risk factor for type 2 diabetes and coronary artery disease, we examined whether p.Arg95Ter may provide protection against both diseases. p.Arg95Ter was associated with 14% lower odds of type 2 diabetes (OR 0.86; $P = 0.006$) and 9% lower odds of coronary artery disease (OR 0.91; $P = 0.01$; Fig. 1). Although *GPR151* encodes a G-protein coupled receptor of unknown function whose expression is limited to the central nervous system, recent studies tracing the lineage of neurons expressing *GRP151* have localized connections to hypothalamic neurons, a region of the brain important in the control of appetite¹¹.

***IL33*, *GSDMB*, and asthma.** We identified several pLOF variants that associated with lower risk of asthma (Table 1). At *GSDMB* encoding gasdermin B, splice acceptor variant c.662-2A > G (rs11078928, allele frequency 46% in European ancestry) protected against asthma (OR 0.90 CI 0.89, 0.91, $P = 6.7 \times 10^{-50}$; Supplementary Table 3). This variant is in tight linkage disequilibrium ($r^2 = 0.99$) with a previously identified non-coding variant in the *GSDMB* locus (rs2305480) associated with lower risk of asthma ($P = 9.6 \times 10^{-8}$)¹². *GSDMB* c.662-2A > G is associated with lower expression of *GSDMB* transcripts¹³. Furthermore, overexpression of *GSDMB* causes airway remodeling and asthma symptoms in a mouse model¹⁴, suggesting that loss of *GSDMB* function may protect against asthma.

At the *IL33* gene, a splice acceptor site variant c.487-1G > C (rs146597587, allele frequency 0.004 in European ancestry) was

observed to protect against asthma (OR 0.58 CI 0.51, 0.66, $P = 7.8 \times 10^{-17}$). This variant was recently identified as associated with lower blood eosinophil concentration at genome-wide significance and with lower risk of asthma at more modest levels of significance ($P = 1.8 \times 10^{-4}$)¹⁵. To further replicate the association of *IL33* c.487-1G > C with asthma, we examined the association of *IL33* c.487-1G > C with asthma in individuals from three additional studies (Partners Biobank, the Vanderbilt eMERGE network, and the Women's Genome Health Study). *IL33* c.487-1G > C was associated with a protective effect of asthma in each data set. Overall, *IL33* c.487-1G > C was associated with 43% lower odds of asthma (OR 0.57 CI 0.51, 0.65, $P = 9.6 \times 10^{-19}$, Fig. 2), suggesting that IL33 inhibition may be a useful approach for treatment of asthma. Of note, an inhibitor of IL33 is currently under development for treatment of asthma¹⁶.

Asthma is often associated with other allergic phenotypes— atopic dermatitis, food allergy, and allergic rhinitis¹⁷. We therefore examined whether asthma-associated pLOF variants in *GSDMB* and *IL33* associate with a lower risk of other atopic disorders in UK Biobank. Both pLOF variants also protected against allergic rhinitis (Fig. 3). In contrast, nominal associations with atopic dermatitis and food allergy were not observed, although point estimates for food allergy were similar to asthma.

***IFIH1* and autoimmune disorders.** A splice donor variant in *IFIH1* (interferon induced with helicase C domain 1), c.1641 + 1G > C (rs35337543, allele frequency 1.5% in European ancestry), is associated with a reduced risk of hypothyroidism in UK

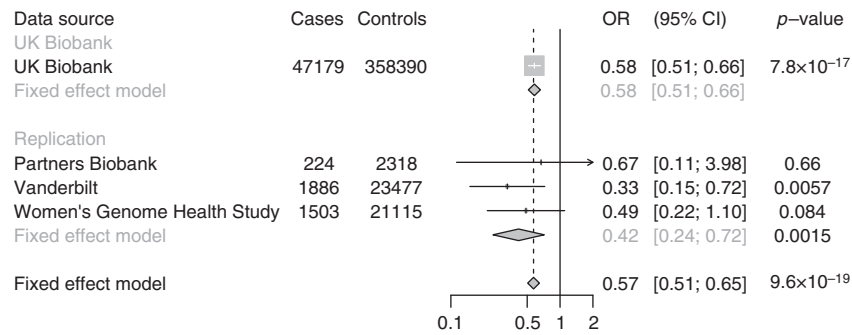


Fig. 2 Association of *IL33* c.487-1G>C with asthma in UK Biobank, Partners Biobank, Vanderbilt eMERGE network and Women's Genome Health Study. UK Biobank estimates were derived using logistic regression, adjusted for age, sex, ten principal components of ancestry, and array type. Partners Biobank and Vanderbilt estimates were derived using logistic regression, adjusted for age, sex, and principal components of ancestry. Women's Genome Health Study estimates were derived using logistic regression, adjusted for age and principal components of ancestry

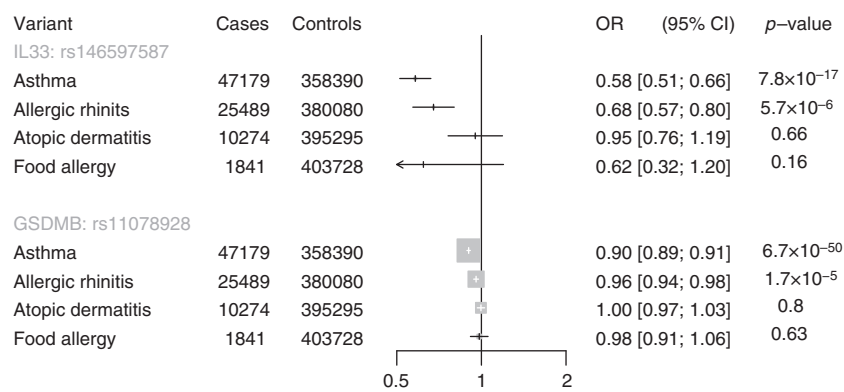


Fig. 3 Association of predicted loss-of-function variant in *GSDMB* and *IL33* with allergic disease in UK Biobank. Estimates were derived in UK Biobank using logistic regression, adjusted for age, sex, ten principal components of ancestry, and array type

Biobank participants (OR 0.77 CI 0.70, 0.85; $P = 5 \times 10^{-9}$; Table 1). A gene-based test combining four additional pLOF variants in *IFIH1* (rs35732034, rs201026962, rs35744605, rs148590996) similarly demonstrated protection against hypothyroidism in UK Biobank (OR 0.79 CI 0.72, 0.86; $P = 4.4 \times 10^{-8}$). Carriers of pLOF variants in *IFIH1* were also protected against hyperthyroidism (OR 0.84 CI 0.73, 0.96; $P = 0.01$; Fig. 4).

Common variants in the *IFIH1* locus have previously been associated with psoriasis¹⁸ and vitiligo¹⁹, while rare pLOF variants in *IFIH1* have been associated with a reduced risk of type 1 diabetes²⁰. We therefore examined whether carriers of pLOF variants in *IFIH1* in UK Biobank were protected against these diseases. Carriers of pLOF variants in *IFIH1* were protected against type 1 diabetes, psoriasis, and vitiligo in UK Biobank (Fig. 4). These results suggest that *IFIH1* pLOF variants alter risk for a range of autoimmune diseases.

In addition, an exploratory analysis demonstrated a nominally lower risk of coronary artery disease among *IFIH1* pLOF carriers. Pooling UK Biobank and MIGN, *IFIH1* pLOF carriers were protected against coronary artery disease (OR 0.92 CI 0.87, 0.98; $P = 0.009$). To examine whether this may be a chance finding, we examined whether the common *IFIH1* missense variant rs1990760, previously identified as associated with autoimmune disorders, also associated with risk of coronary artery disease. The T allele of rs1990760 (frequency 41%) associated with a reduced risk of hypothyroidism (OR 0.92 CI 0.90, 0.94; $P = 9.3 \times 10^{-17}$) in UK Biobank. Pooling UK Biobank and CARDIOGRAM Exome, the T allele of rs1990760 also associated with a lower risk of

coronary artery disease (OR 0.97 CI 0.96, 0.99; $P = 2.5 \times 10^{-5}$), providing complementary evidence that *IFIH1* may influence coronary artery disease risk.

***PDE3B* and body fat distribution.** At *PDE3B* encoding the gene phosphodiesterase 3B, p.Arg783Ter (rs150090666, allele frequency 0.0006 in European ancestry) associated with elevated height (beta 0.24, $P = 9.3 \times 10^{-9}$). Targeted deletion of *Pde3b* in mice leads to white adipose tissue gaining characteristics of brown adipose tissue²¹, a reduction in adipocyte size²², smaller fat deposits²³ and reduced atherosclerosis²⁴. We therefore studied the association of *PDE3B* p.Arg783Ter with metabolic phenotypes in UK Biobank and/or MIGN, where 36,581 individuals have been sequenced for the 16 exons of the *PDE3B* gene. In UK Biobank, which lacks direct measurements of blood lipids, carriers of p.Arg783Ter carriers were at reduced risk of physician-diagnosis of hypercholesterolemia (OR 0.52, $P = 0.0002$). Pooling UK Biobank and MIGN, pLOF carriers in *PDE3B* had reduced WHRadjBMI (beta -0.15, $P = 0.0005$). As genetic predisposition to improved body fat distribution has been associated with a lower risk of coronary artery disease²⁵, we examined whether loss of *PDE3B* function protects against coronary artery disease. We aggregated rare *PDE3B* pLOFs in cases and compared this count with that controls. Across 14,805 cases in UK Biobank, the carrier frequency of pLOF in cases was 0.1% and in controls 0.2%. Across 20,186 cases in MIGN, the carrier frequency of pLOF was 0.05% and 0.1% in controls. Collectively, carrier status for *PDE3B*

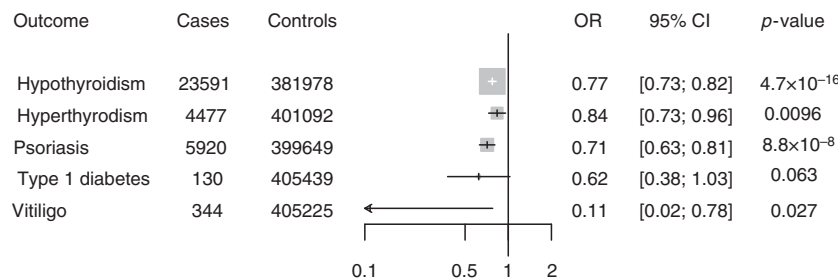


Fig. 4 Association of predicted loss-of-function variants in *IFIH1* with thyroid disorders, type 1 diabetes, psoriasis, and vitiligo in UK Biobank. Estimates were derived in UK Biobank using logistic regression, adjusted for age, sex, ten principal components of ancestry, and array type

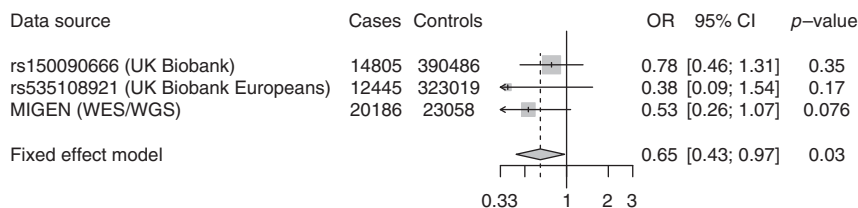


Fig. 5 Association of predicted loss-of-function variants in *PDE3B* with coronary artery disease. Estimates were derived in UK Biobank using logistic regression, adjusted for age, sex, ten principal components of ancestry, and array type. Estimates were derived in MIGEN (Myocardial Infarction Genetics Consortium) using logistic regression, adjusted for sex and five principal components of ancestry

pLOFs was associated with reduced risk for coronary artery disease (OR 0.65 CI 0.43, 0.97; $P = 0.03$; Fig. 5).

Presence of homozygote individuals for pLOF variants in target genes may provide an in vivo demonstration of safety of pharmacologic inhibition of target genes. We therefore examined whether homozygotes for these pLoF variants were present in UK Biobank and in the gnomAD database²⁶. At least one individual homozygous for a pLOF variant was identified in UK Biobank or the gnomAD database for the genes *GPR151*, *GSDMB*, *IL33* and *IFIH1*, and *PDE3B* (Supplementary Table 6).

Discussion

In this study, we identified pLOF variants that protect against obesity (*GPR151*), asthma (*GSDMB*, *IL33*), autoimmune disorders (*IFIH1*), and coronary artery disease (*PDE3B*), prioritizing genes and pathways for which pharmacologic attempts to mimic these protective mutations might ameliorate disease.

Identification of protective loss-of-function variants has led to the development of therapeutics. Most notably, the discovery of missense and loss-of-function variants in *PCSK9* that lower LDL cholesterol and protect against coronary artery disease suggested that inhibition of *PCSK9* may be a useful therapeutic strategy for prevention and treatment of cardiovascular disease^{3,27}. These genetic studies were validated by a large-scale randomized trial demonstrating that a monoclonal antibody directed against *PCSK9* reduced the risk of recurrent cardiovascular events⁴. More recently, the discovery of loss-of-function variants in *ANGPTL3* that lower blood triglyceride levels and protect against coronary artery disease has suggested that *ANGPTL3* inhibition may reduce blood triglyceride levels and risk of coronary artery disease^{28,29}. *ANGPTL3* inhibitors are in clinical development and have now been demonstrated to reduce blood triglyceride levels^{5,6}.

Our findings identify putative therapeutic targets that, similar to *PCSK9* and *ANGPTL3*, may be useful for prevention of disease. For obesity and type 2 diabetes, these results highlight *GPR151* as a potential therapeutic target. *GPR151* encodes a largely

uncharacterized G protein-coupled receptor. The mechanism by which it influences risk of obesity and type 2 diabetes is unclear. However, it is highly expressed in the hypothalamus, a region of the brain known to be involved in appetite regulation¹¹. Indeed, genetic variation in *MC4R*, which encodes the melanocortin 4 receptor, strongly influences obesity risk at a population level³⁰. Similar to *GPR151*, *MC4R* is highly expressed in the hypothalamus and is involved in appetite regulation³¹.

PDE3B inhibition may be a useful therapeutic strategy to improve body fat distribution and reduce risk of coronary artery disease. Unlike *GPR151*, for which no pharmacologic inhibitor is currently in clinical use, an inhibitor of *PDE3B* is available. Cilostazol is a non-selective pharmacologic inhibitor of both phosphodiesterase 3B and the related isoform phosphodiesterase 3A³². In a small randomized trial including 211 participant, cilostazol significantly reduced restenosis after percutaneous coronary balloon angioplasty³³. The association of *PDE3B* pLOFs with improved body fat distribution, reduced risk of hypercholesterolemia and reduced risk of coronary artery disease suggests that selective inhibition of *PDE3B* may be useful for multiple features of metabolic syndrome.

We identified pLOF variants in *IL33* (encoding interleukin 33) and *GSDMB* (encoding gasdermin B) as associated with a lower risk of asthma. The *IL33* variant rs146597587 was recently found to be associated with lower blood eosinophil concentration at genome-wide significance and with lower risk of asthma at more modest levels of significance ($P = 1.8 \times 10^{-4}$)¹⁵. Consistent with these findings, induction of antibodies against IL33 by vaccination induces protection against airway inflammation in a mouse model of asthma³⁴. An inhibitor of IL33 is currently under development for treatment of asthma¹⁶. In contrast to IL33, no inhibitor for *GSDMB* is in clinical development. These findings suggest that IL33 and *GSDMB* inhibition may both be useful therapeutic strategies for treatment of asthma and allergic disease.

Although our restriction of the present analysis to pLOF variants increases the likelihood of identifying causal variants substantially, it remains possible that a highly correlated nearby

variant could be driving the association in some cases. Future functional studies may permit additional validation of causal variants.

In summary, we associated pLOF variants with a range of biomarker and disease phenotypes in a large, national biobank and identified several new genes in which pLOF variants protect against disease, prioritizing these genes for therapeutic targeting. More generally, large-scale analysis of pLOF variants is emerging as a useful tool for therapeutic target identification and validation.

Methods

Gene and variant annotation. Variants in hg19 coordinates were annotated with information from Ensembl release 82 using Variant Effect Predictor (VEP)⁷. Only pLOFs, defined as premature stop (nonsense), canonical splice-sites (splice-donor or splice-acceptor) or insertion/deletion variants that shifted frame (frameshift) were annotated as predicted loss-of-function (pLOF), using the “--pick-allele” annotation. PLOFs as defined by VEP were then merged with publicly available data from the Exome Aggregation Consortium (ExAC), Version 0.3.1, to confirm consistency in variant annotation²⁶.

We identified 3759 pLOF variants in UK Biobank with an *info* score greater than 0.3 (Supplementary Table 1). We used a Bonferroni corrected *P* value of 5.5×10^{-7} to denote significance [$0.05/(3759 \text{ variants} \times 24 \text{ outcomes}) = 5.5 \times 10^{-7}$] in our primary pLOF analysis.

Study design. We analyzed the association of pLOF variants with 24 phenotypes: cardiovascular, metabolic and pulmonary phenotypes: six metabolic traits (body mass index, waist-to-hip ratio, height, systolic blood pressure, diastolic blood pressure, and forced expiratory volume to forced vital capacity ratio), six cardio-metabolic diseases (coronary artery disease, type 2 diabetes, atrial fibrillation, stroke, heart failure, and venous thromboembolism) and 12 diseases with more than 5000 cases (allergic rhinitis, asthma, anxiety, breast cancer, cataract, cholelithiasis, depression, hypothyroidism, gastric reflux, osteoporosis, osteoarthritis, and psoriasis; Supplementary Table 4). All six metabolic traits were inverse normalized prior to analysis, with adjustment for age and sex. Forced expiratory volume to forced vital capacity ratio was additionally adjusted for height. To adjust for the presence of antihypertensive medication, we added 15 mm Hg to systolic blood pressure and 10 mm Hg to diastolic blood pressure of individuals on antihypertensive medication at baseline, as in the International Consortium for Blood Pressure genome-wide association study³⁵. Definitions for disease outcomes in UK Biobank are provided (Supplementary Table 7).

In UK Biobank, analysis was performed separately in unrelated individuals of European and Non-European ancestry. Estimates for variants were then pooled using inverse-variance weighted-fixed effects meta-analysis. For coronary artery disease, estimates for variants from UK Biobank were additionally pooled with the effect of variants in the CARDIOGRAM Exome consortium using inverse variance weighted-fixed effects meta-analysis⁹. For height, estimates of variants in UK Biobank were pooled with the GIANT Height Exome consortium using inverse variance weighted-fixed effects meta-analysis¹⁰.

Genotyping and quality control. Phasing and imputation were performed centrally, by UK Biobank, using a reference panel combining UK10k and 1000 Genomes samples. 39,235,157 variants included in the Haplotype Reference Consortium were imputed. As recommended by UK Biobank, we excluded any samples with an imputation quality <0.3 as well as pLOF variants which were not included in the Haplotype Reference Consortium. Mitochondrial genetic data and sex chromosomes were excluded from this analysis. Individual level genetic data was available from individuals in UK Biobank, after excluding one related individual of each related pair of individuals, individuals whose genetic sex did not match self-reported sex and individuals with an excess of missing genotype calls or more heterozygosity than expected.

We analysed 3759 variants identified as pLOF variants in UK Biobank. PLINK 2 software was used to examine the association of these variants with traits and disease in UK Biobank under the assumption of additive effects (<https://www.cog-genomics.org/plink/2.0/>). Adjustment was performed for age, sex, ten principal components of ancestry, and array type.

Conditional analysis. A locus-wide conditional analysis (± 500 kb of the pLOF variant) was performed to determine the extent to which the identified pLOF variant signal was independent of other genetic variation at the locus. We iteratively performed association analyses conditional on the top variants at each locus, until no variants were below the Bonferroni-adjusted threshold for significance ($P < 5.5 \times 10^{-7}$). A statistically significant and independent signal for the pLOF variant provides increased confidence for a causal association.

Analysis of PDE3B association with coronary artery disease. We aimed to analyse the association of pLOF variants in *PDE3B* with coronary artery disease in

a combined analysis of UK Biobank and the Myocardial Infarction Genetics Consortium (MIGen). Replication was performed in MIGen rather than the CARDIOGRAM Exome consortium as rs150090666 was not included in the exome chip analysis of the CARDIOGRAM Exome consortium⁹. Estimates of the association of rs150090666 with coronary artery disease in UK Biobank were derived as described above, using logistic regression with adjustment for age, sex, ten principal components of ancestry, and a dummy variable for array type. An additional pLOF variant, rs535108921, present in UK Biobank, was also analysed for association with coronary artery disease, as above.

pLOFs variants in *PDE3B* were identified in the MIGen Consortium using exome sequencing or whole genome sequencing, as previously described^{36–38}. Studies included in the MIGen consortium were: (1) the Italian Atherosclerosis Thrombosis and Vascular Biology (ATVB) study (dbGaP Study Accession phs000814.v1.p1); (2) the Exome Sequencing Project Early-Onset Myocardial Infarction (ESP-EOMI) study(9); (3) a nested case-control cohort from the Jackson Heart Study (JHS); (4) the South German Myocardial Infarction study (dbGaP Study Accession phs000916.v1.p1); (5) the Ottawa Heart Study (OHS) (dbGaP Study Accession phs000806.v1.p1); (6) the Precocious Coronary Artery Disease (PROCARDIS) study (dbGaP Study Accession phs000883.v1.p1); (7) the Pakistan Risk of Myocardial Infarction Study (PROMIS) (dbGaP Study Accession phs000917.v1.p1); (8) the Registre Gironi del COR (Gerona Heart Registry or REGICOR) study (dbGaP Study Accession phs000902.v1.p1); (9) the Leicester Myocardial Infarction study (dbGaP Study Accession phs001000.v1.p1); (10) the BioImage study (dbGaP Study Accession phs001058.v1.p1); (11) the North German Myocardial Infarction study (dbGaP Study Accession phs000990.v1.p1); (12) Multi-Ethnic Study of Atherosclerosis (dbGaP Study Accession: phs000209.v2.p1); (13) Variation In Recovery: Role of Gender on Outcomes of Young AMI cohort; and (14) Taiwan MetaboChip Consortium.

The Burrows–Wheeler Aligner algorithm was used to align reads from participants to the reference genome (hg19). The GATK HaploTypeCaller was used to jointly call variants. Metrics including Variant Quality Score Recalibration (VQSR), quality over depth, and strand bias were then used to filter variants. We excluded samples which were related to other samples, which had high ratios of heterozygous to non-reference homozygous genotypes, which had high missing genotypes, which had a discordant genetic gender relative to reports gender, and samples which were discordant relative to genotype data.

After variant calling and quality control, the Variant Effect Predictor^{7,8} was used to annotate variants which were pLOF: (1) nonsense mutations that resulted in early termination of *PDE3B* (2) frameshift mutations due to insertions or deletions of DNA; or (3) splice-site mutations which result in an incorrectly spliced protein (Supplementary Table 8). For analysis of rare pLOF variants, we pooled rare pLOF variants in MIGen, testing for the association of a pLOF with coronary artery disease using logistic regression, after adjustment for age, sex, cohort, and five principle components of ancestry. We meta-analysed the association of pLOFs with coronary artery disease in MIGen combined with UK Biobank.

Replication of IL33 finding. To replicate the association of rs146597587, a splice site variant in *IL33*, with asthma, we pooled estimates of the association of rs146597587 with asthma from Partners Biobank, from the Vanderbilt eMERGE network and from the Women’s Genome Health Study. In Partners Biobank, rs146597587 was imputed (info score of 0.77) in 2542 individuals. The association of rs146597587 with asthma (hospitalization for ICD9 code 493) was estimated using logistic regression, adjusted for age, sex, and five principal components of ancestry. In the Vanderbilt eMERGE network, rs146597587 was genotyped in 25,363 individuals using the Illumina Exome BeadChip. The association of rs146597587 with asthma (hospitalization for ICD9 code 493) was estimated using logistic regression, adjusted for age, sex, and principal components of ancestry. In Women’s Genome Health Study, rs146597587 was genotyped in 22,618 individuals using the Illumina Exome. The association of rs146597587 with asthma (hospitalization for ICD9 code 493 or ICD10 code J45) was estimated using logistic regression, adjusted for age and principal components of ancestry.

Data availability. All individual-level data from UK Biobank can be accessed by applying to the UK Biobank Central Access Committee (<http://www.ukbiobank.ac.uk/register-apply/>).

Received: 3 October 2017 Accepted: 21 March 2018

Published online: 24 April 2018

References

1. Edwards, S. L., Beesley, J., French, J. D. & Dunning, A. M. Beyond GWASs: illuminating the dark road from association to function. *Am. J. Hum. Genet.* **93**, 779–797 (2013).

2. Abifadel, M. et al. Mutations in PCSK9 cause autosomal dominant hypercholesterolemia. *Nat. Genet.* **34**, 154–156 (2003).
3. Cohen, J. C., Boerwinkle, E., Mosley, T. H. & Hobbs, H. H. Sequence variations in PCSK9, low LDL, and protection against coronary heart disease. *N. Engl. J. Med.* **354**, 1264–1272 (2006).
4. Sabatine, M. S. et al. Evolocumab and clinical outcomes in patients with cardiovascular disease. *N. Engl. J. Med.* **376**, 1713–1722 (2017).
5. Dewey, F. E. et al. Genetic and pharmacologic inactivation of ANGPTL3 and cardiovascular disease. *N. Engl. J. Med.* **377**, 211–221 (2017).
6. Graham, M. J. et al. Cardiovascular and metabolic effects of ANGPTL3 antisense oligonucleotides. *N. Engl. J. Med.* **377**, 222–232 (2017).
7. McLaren, W. et al. Deriving the consequences of genomic variants with the ensemble API and SNP effect predictor. *Bioinformatics* **26**, 2069–2070 (2010).
8. Karczewski, K. J. LOFTEE (Loss-Of-Function Transcript Effect Estimator). <https://github.com/konradjk/loftee> (2015).
9. Myocardial Infarction Genetics and CARDIoGRAM Exome Consortium Investigators. Coding variation in ANGPTL4, LPL, and SVEP1 and the risk of coronary disease. *N. Engl. J. Med.* **374**, 1134–1144 (2016).
10. Marouli, E. et al. Rare and low-frequency coding variants alter human adult height. *Nature* **542**, 186–190 (2017).
11. Broms, J. et al. Monosynaptic retrograde tracing of neurons expressing the G-protein coupled receptor Gpr151 in the mouse brain. *J. Comp. Neurol.* **525**, 3227–3250 (2017).
12. Moffatt, M. F. et al. A large-scale, consortium-based genomewide association study of asthma. *N. Engl. J. Med.* **363**, 1211–1221 (2010).
13. Morrison, F. S. et al. The splice site variant rs11078928 may be associated with a genotype-dependent alteration in expression of GSDMB transcripts. *BMC Genom.* **14**, 627 (2013).
14. Das, S. et al. GSDMB induces an asthma phenotype characterized by increased airway responsiveness and remodeling without lung inflammation. *Proc. Natl Acad. Sci. USA* **113**, 13132–13137 (2016).
15. Smith, D. et al. A rare IL33 loss-of-function mutation reduces blood eosinophil counts and protects from asthma. *PLOS Genet.* **13**, e1006659 (2017).
16. Gangwar, R. S., Landolina, N., Arpinati, L. & Levi-Schaffer, F. Mast cell and eosinophil surface receptors as targets for anti-allergic therapy. *Pharmacol. Ther.* **170**, 37–63 (2017).
17. Spergel, J. M. Epidemiology of atopic dermatitis and atopic march in children. *Immunol. Allergy Clin. North. Am.* **30**, 269–280 (2010).
18. Stuart, P. E. et al. Genome-wide association analysis of psoriatic arthritis and cutaneous psoriasis reveals differences in their genetic architecture. *Am. J. Hum. Genet.* **97**, 816–836 (2015).
19. Jin, Y. et al. Genome-wide association studies of autoimmune vitiligo identify 23 new risk loci and highlight key pathways and regulatory variants. *Nat. Genet.* **48**, 1418–1424 (2016).
20. Nejentsev, S., Walker, N., Riches, D., Egholm, M. & Todd, J. A. Rare variants of IFIH1, a gene implicated in antiviral responses, protect against type 1 diabetes. *Science* **324**, 387–389 (2009).
21. Guirguis, E. et al. A role for phosphodiesterase 3B in acquisition of brown fat characteristics by white adipose tissue in male mice. *Endocrinology* **154**, 3152–3167 (2013).
22. Choi, Y. H. et al. Alterations in regulation of energy homeostasis in cyclic nucleotide phosphodiesterase 3B-null mice. *J. Clin. Invest.* **116**, 3240–3251 (2006).
23. Chung, Y. W. et al. White to beige conversion in PDE3B KO adipose tissue through activation of AMPK signaling and mitochondrial function. *Sci. Rep.* **7**, 40445 (2017).
24. Ahmad, F. et al. Phosphodiesterase 3B (PDE3B) regulates NLRP3 inflammasome in adipose tissue. *Sci. Rep.* **6**, 28056 (2016).
25. Emdin, C. et al. Genetic association of waist-to-hip ratio with cardiometabolic traits, type 2 diabetes, and coronary heart disease. *JAMA: J. Am. Med. Assoc.* **317**, 626–634 (2017).
26. Lek, M. et al. Analysis of protein-coding genetic variation in 60,706 humans. *Nature* **536**, 285–291 (2016).
27. Cohen, J. et al. Low LDL cholesterol in individuals of African descent resulting from frequent nonsense mutations in PCSK9. *Nat. Genet.* **37**, 161–165 (2005).
28. Musunuru, K. et al. Exome sequencing, ANGPTL3 mutations, and familial combined hypolipidemia. *N. Engl. J. Med.* **363**, 2220–2227 (2010).
29. Stitzel, N. O. et al. ANGPTL3 deficiency and protection against coronary artery disease. *J. Am. Coll. Cardiol.* **69**, 2054–2063 (2017).
30. Turcot, V. et al. Protein-altering variants associated with body mass index implicate pathways that control energy intake and expenditure in obesity. *Nat. Genet.* **50**, 26–41 (2018).
31. Shah, B. P. et al. MC4R-expressing glutamatergic neurons in the paraventricular hypothalamus regulate feeding and are synaptically connected to the parabrachial nucleus. *Proc. Natl Acad. Sci. USA* **111**, 13193–13198 (2014).
32. Chung, Y. W. et al. Targeted disruption of PDE3B, but not PDE3A, protects murine heart from ischemia/reperfusion injury. *Proc. Natl Acad. Sci. USA* **112**, E2253–E2262 (2015).
33. Tsuchikane, E. et al. Impact of cilostazol on restenosis after percutaneous coronary balloon angioplasty. *Circulation* **100**, 21–26 (1999).
34. Lei, Y. et al. Vaccination against IL-33 inhibits airway hyperresponsiveness and inflammation in a house dust mite model of asthma. *PLOS One* **10**, e0133774 (2015).
35. International Consortium for Blood Pressure Genome-Wide Association Studies. et al. Genetic variants in novel pathways influence blood pressure and cardiovascular disease risk. *Nature* **478**, 103–109 (2011).
36. Do, R. A. Exome sequencing identifies rare LDLR and APOA5 alleles conferring risk for myocardial infarction. *Nature* **518**, 102–106 (2015).
37. Khera, A. V. et al. Diagnostic yield and clinical utility of sequencing familial hypercholesterolemia genes in patients with severe hypercholesterolemia. *J. Am. Coll. Cardiol.* **67**, 2578–2589 (2016).
38. Khera, A. V. et al. Genome-wide polygenic score to identify a monogenic risk-equivalent for coronary disease. Preprint at *bioRxiv* <https://doi.org/10.1101/218388> (2017).
39. Surendran, P. et al. Trans-ancestry meta-analyses identify rare and common variants associated with blood pressure and hypertension. *Nat. Genet.* **48**, 1151–1161 (2016).
40. Warren, H. R. et al. Genome-wide association analysis identifies novel blood pressure loci and offers biological insights into cardiovascular risk. *Nat. Genet.* **49**, 403–415 (2017).

Acknowledgements

This research has been conducted using the UK Biobank resource, application 7089. The WGHs is supported by the National Heart, Lung, and Blood Institute (HL043851 and HL080467) and the National Cancer Institute (CA047988 and UM1CA182913) with funding for genotyping provided by Amgen. The VIRGO study was supported by grant R01 HL081153-01A1K from the National Heart, Lung, and Blood Institute. The TAICHI study was supported by the National Health Research Institutes, Taiwan (PH-099-PP-03, PH-100-PP-03, PH-101-PP-03), the National Science Council, Taiwan (Grant Nos NSC 101-2314-B-075A-006-MY3, MOST 104-2314-B-075A-006-MY3, MOST 104-2314-B-075A-007, MOST 105-2314-B-075A-003), the Taichung Veterans General Hospital, Taiwan (TCVGH-1020101C, TCVGH-1020102D, TCVGH-1023102B, TCVGH-1023107D, TCVGH-1030101C, TCVGH-1030105D, TCVGH-1033503C, TCVGH-1033102B, TCVGH-1033108D, TCVGH-1040101C, TCVGH-1040102D, TCVGH-1043504C, TCVGH-1043104B), and the National Center for Advancing Translational Sciences, CTSA grant UL1TR001881. The MESA and the MESA SHARE project are conducted and supported by the National Heart, Lung, and Blood Institute (NHLBI) in collaboration with MESA investigators. Support for MESA is provided by contracts HHSN268201500003L, N01-HC-95159, N01-HC-95160, N01-HC-95161, N01-HC-95162, N01-HC-95163, N01-HC-95164, N01-HC-95165, N01-HC-95166, N01-HC-95167, N01-HC-95168, N01-HC-95169, UL1-TR-000040, UL1-TR-001079, UL1-TR-001420, UL1-TR-001881, and DK063491. Whole genome sequencing of the VIRGO and TAICHI cohorts was funded by grant 5UM1HG008895-02 from the National Human Genome Research Institute's Center for Common Disease Genomics. Whole genome sequencing of the MESA cohort was funded through the Trans-Omics for Precision Medicine (TOPMed) Program of the National Heart, Lung, and Blood Institute. General study coordination was provided by the TOPMed Data Coordinating Center (3R01HL-12393-02S1). The contributions of the investigators of the NHLBI TOPMed Consortium (<https://www.nhlbiwgs.org/topmed-banner-authorship>) are gratefully acknowledged. The Atherosclerosis Risk in Communities study is carried out as a collaborative study supported by the National Heart, Lung, and Blood Institute (NHLBI) contracts (HHSN268201100005C, HHSN268201100006C, HHSN268201100007C, HHSN268201100008C, HHSN268201100009C, HHSN268201100010C, HHSN268201100011C, and HHSN268201100012C). The authors thank the staff and participants of the ARIC study for their important contributions. Funding support for "Building on GWAS for NHLBI-diseases: the U.S. CHARGE consortium" was provided by the NIH through the American Recovery and Reinvestment Act of 2009 (ARRA) (5RC2HL102419).

Author contributions

C.A.E., A.V.K., D.K., and S.K. conceived and designed the study. C.A.E., A.V.K., M.C., H. K., D.S., S.G., and S.K. acquired, analysed, and interpreted data. C.A.E., A.V.K., and S.K. drafted the manuscript. All authors revised the manuscript for important intellectual content. S.K. supervised the study.

Additional information

Supplementary Information accompanies this paper at <https://doi.org/10.1038/s41467-018-03911-8>.

Competing interests: A.V.K. is supported by a John S. LaDue Memorial Fellowship at Harvard Medical School, and a KL2/Catalyst Medical Research Investigator Training award from Harvard Catalyst funded by the National Institutes of Health (NIH)

(TR001100) and has received consulting fees from Merck and Amarin. P.N. reports funding from the John S. LaDue Memorial Fellowship at Harvard Medical School and has received consulting fees from Amarin. S.K. is supported by a research scholar award from Massachusetts General Hospital, the Donovan Family Foundation, and R01 HL127564; he has received a research grant from Bayer Healthcare; and consulting fees from Merck, Novartis, Sanofi, AstraZeneca, Alnylam Pharmaceuticals, Leerink Partners, Noble Insights, MedGenome, Aegerion Pharmaceuticals, Regeneron Pharmaceuticals, Quest Diagnostics, Genomics PLC, and Eli Lilly and Company; and holds equity in San Therapeutics and Catabasis Pharmaceuticals. The remaining authors declare no competing interests.

Reprints and permission information is available online at <http://npg.nature.com/reprintsandpermissions/>

Publisher's note: Springer Nature remains neutral with regard to jurisdictional claims in published maps and institutional affiliations.



Open Access This article is licensed under a Creative Commons Attribution 4.0 International License, which permits use, sharing, adaptation, distribution and reproduction in any medium or format, as long as you give appropriate credit to the original author(s) and the source, provide a link to the Creative Commons license, and indicate if changes were made. The images or other third party material in this article are included in the article's Creative Commons license, unless indicated otherwise in a credit line to the material. If material is not included in the article's Creative Commons license and your intended use is not permitted by statutory regulation or exceeds the permitted use, you will need to obtain permission directly from the copyright holder. To view a copy of this license, visit <http://creativecommons.org/licenses/by/4.0/>.

© The Author(s) 2018

Connor A. Emdin^{1,2,3}, Amit V. Khera^{1,2,3}, Mark Chaffin^{1,2,3}, Derek Klarin^{1,3,4}, Pradeep Natarajan^{1,2,3}, Krishna Aragam^{1,2,3}, Mary Haas^{1,2,3}, Alexander Bick^{1,3}, Seyedeh M. Zekavat^{1,3,5}, Akihiro Nomura^{1,2,3}, Diego Ardissino^{6,7}, James G. Wilson⁸, Heribert Schunkert⁹, Ruth McPherson¹⁰, Hugh Watkins^{11,12}, Roberto Elosua^{13,14,15}, Matthew J. Bown¹⁶, Nilesh J. Samani¹⁶, Usman Baber¹⁷, Jeanette Erdmann¹⁸, Namrata Gupta³, John Danesh^{19,20,21}, Daniel Chasman²², Paul Ridker²², Joshua Denny²³, Lisa Bastarache²³, Judith H. Lichtman²⁴, Gail D'Onofrio²⁵, Jennifer Mattera²⁶, John A. Spertus²⁷, Wayne H.-H. Sheu²⁸, Kent D. Taylor²⁹, Bruce M. Psaty^{30,31}, Stephen S. Rich³², Wendy Post³³, Jerome I. Rotter²⁹, Yii-Der Ida Chen²⁹, Harlan Krumholz²⁶, Danish Saleheen^{34,35}, Stacey Gabriel³ & Sekar Kathiresan^{1,2,3}

¹Center for Genomic Medicine, Massachusetts General Hospital, Harvard Medical School, Boston, MA 02114, USA. ²Department of Medicine, Massachusetts General Hospital, Cardiology Division, Harvard Medical School, Boston, MA 02114, USA. ³Program in Medical and Population Genetics, Broad Institute, Cambridge, MA 02142, USA. ⁴Department of Surgery, Massachusetts General Hospital, Harvard Medical School, Boston, MA 02114, USA. ⁵Department of Computational Biology & Bioinformatics, Yale Medical School, Yale University, New Haven, MA 06510, USA. ⁶Division of Cardiology, Azienda Ospedaliero-Universitaria di Parma, Parma 43121, Italy. ⁷Associazione per lo Studio Della Trombosi in Cardiologia, Pavia 27100, Italy. ⁸Department of Physiology and Biophysics, University of Mississippi Medical Center, Jackson, MS 39216, USA. ⁹Deutsches Herzzentrum München, Technische Universität München, Deutsches Zentrum für Herz-Kreislauf-Forschung, München 80333, Germany. ¹⁰University of Ottawa Heart Institute, Ottawa, ON K1Y4W7, Canada. ¹¹Radcliffe Department of Medicine, Division of Cardiovascular Medicine, University of Oxford, Oxford OX1 2JD, UK. ¹²Wellcome Trust Centre for Human Genetics, University of Oxford, Oxford OX1 2JD, UK. ¹³Cardiovascular Epidemiology and Genetics, Hospital del Mar Research Institute, Barcelona 08003, Spain. ¹⁴CIBER Enfermedades Cardiovasculares (CIBERCIV), Barcelona 28029, Spain. ¹⁵Facultat de Medicina, Universitat de Vic-Central de Catalunya, Barcelona, VIC 08500, Spain. ¹⁶Department of Cardiovascular Sciences, University of Leicester, and NIHR Leicester Biomedical Research Centre, Leicester LE1 7RH, UK. ¹⁷The Zena and Michael A. Wiener Cardiovascular Institute, Icahn School of Medicine at Mount Sinai, New York 10029 NY, USA. ¹⁸Institute for Integrative and Experimental Genomics, University of Lübeck, Lübeck 23562, Germany. ¹⁹Department of Public Health and Primary Care, Cardiovascular Epidemiology Unit, University of Cambridge, Cambridge CB2 0SR, UK. ²⁰Wellcome Trust Sanger Institute, Hinxton, Cambridge CB10 1SA, UK. ²¹National Institute of Health Research Blood and Transplant; Research Unit in Donor Health and Genomics, University of Cambridge, Cambridge CB2 1TN, UK. ²²Center for Cardiovascular Disease Prevention, Brigham and Women's Hospital, Boston 02115, USA. ²³Department of Biomedical Informatics, Vanderbilt University, Nashville, TN 37235, USA. ²⁴Department of Chronic Disease Epidemiology, Yale School of Public Health, New Haven, CT 06510, USA. ²⁵Department of Emergency Medicine, Yale University, New Haven, CT 06520, USA. ²⁶Center for Outcomes Research and Evaluation, Yale-New Haven Hospital, New Haven, CT 06510, USA. ²⁷Department of Biomedical & Saint Luke's Mid America Heart Institute and the Health Informatics, Division of Endocrinology and Metabolism, University of Missouri-Kansas City, Kansas City, MO 64110, USA. ²⁸Department of Internal Medicine, Taichung Veterans General Hospital, Taichung 40705, Taiwan. ²⁹The Institute for Translational Genomics and Population Sciences LABioMed and Department of Pediatrics at Harbor-UCLA Medical Center, Torrance, CA 90095, USA. ³⁰Cardiovascular Health Research Unit, Departments of Medicine, Epidemiology and Health Services, University of Washington, Seattle 98195 WA, USA. ³¹Cardiovascular Health Research Unit, Kaiser Permanente Washington Health Research Institute, 98101 Seattle, WA, USA. ³²Center for Public Health Genomics, University of Virginia School of Medicine, Charlottesville, VA 22908, USA. ³³Division of Cardiology, Johns Hopkins University School of Medicine, Baltimore, MD 21205, USA. ³⁴Center for Non-Communicable Diseases, Karachi 74800, Pakistan. ³⁵Department of Biostatistics and Epidemiology, Perelman School of Medicine, University of Pennsylvania, Philadelphia, PA 19104, USA. These authors contributed equally: Connor A. Emdin, Amit V. Khera.