

HumanDimensions
Research Program

Illinois Natural History Survey
Prairie Research Institute
University of Illinois at
Urbana-Champaign



Federal Aid Project
Number W-112-R-25
Job Number 101.1
Wildlife Restoration
Oct. 1, 2015-Sept. 30, 2016

Wayne Rosenthal, Director
Illinois Department of Natural
Resources

Paul Vehlow
Federal Aid Coordinator

Mark G. Alessi
Acting Chief, Division of
Wildlife Resources



2015-2016 Illinois Hunter Harvest Report



Craig A. Miller, Ph.D.
Program Leader and Principal Investigator
Human Dimensions Research Program
Illinois Natural History Survey

Prepared by
Brent D. Williams, Ryan J. Conat,
Laura A. Schweizer, Linda K. Campbell,
and Craig A. Miller

INHS Technical Report 2016 (59)
December 02, 2016

Key words: Hunting activities, harvest reporting, season preferences, and bag limits.

Suggested Citation:

Williams, B.D., Conat, R.J., Schweizer, L.A., Campbell, L.K., and Miller, C.A. 2016. 2015-2016 Illinois Hunter Harvest Report. Job Completion Report, Federal Aid in Wildlife Restoration W-112-R-25. Human Dimensions Research Program Report HR-16-01/INHS Technical Report (59). Illinois Natural History Survey, Champaign, IL. 79pp.

SECTION 1: HUNTER HARVEST

LIST OF FIGURES	<u>Page</u>
Figure 1.1.....Number of resident hunting licenses purchased in Illinois, 1940-2015.....	3
Figure 1.2.....Percentage of hunters who purchased a hunting license in 2015.....	3
Figure 1.3.....Percentage of hunters who hunted any wildlife species in Illinois between March 2015 and February 2016.....	3
Figure 1.4.....Illinois rabbit harvest and hunter activity 2005-2015.....	5
Figure 1.5.....Number of days per hunter, harvest per hunter, and harvest per day per hunter for rabbit hunting in Illinois.....	5
Figure 1.6.....Illinois dove harvest and hunter activity 2005-2015.....	6
Figure 1.7.....Illinois fox squirrel harvest and hunter activity 2005-2015.....	6
Figure 1.8.....Illinois gray squirrel harvest and hunter activity 2005-2015.....	7
Figure 1.9.....Illinois coyote harvest and hunter activity 2005-2015.....	7

LIST OF TABLES	<u>Page</u>
Table 1.1.....Number of resident hunting licenses purchased in Illinois, 1938-2015.....	8
Table 1.2.....Summary of statewide data from the 2015 Hunter Harvest Survey.....	9
Table 1.3.....Estimated number (\pm 95% confidence interval) of Resident Licensed Hunters and Harvest in Illinois.....	10
Table 1.4.....Rabbit hunting effort and harvest by Wildlife Management Unit (WMU).....	11
Table 1.5.....Non-Wild Quail hunting effort and harvest by Wildlife Management Unit (WMU).....	11
Table 1.6.....Wild Quail hunting effort and harvest by Wildlife Management Unit (WMU).....	12
Table 1.7.....Non-Wild Pheasant hunting effort and harvest by Wildlife Management Unit (WMU).....	12
Table 1.8.....Wild Pheasant hunting effort and harvest by Wildlife Management Unit (WMU).....	13
Table 1.9.....Dove hunting effort and harvest by Wildlife Management Unit (WMU).....	13
Table 1.10.....Woodcock hunting effort and harvest by Wildlife Management Unit (WMU).....	14
Table 1.11.....Crow hunting effort and harvest by Wildlife Management Unit (WMU).....	14
Table 1.12.....Groundhog hunting effort and harvest by Wildlife Management Unit (WMU).....	15
Table 1.13.....Gray Squirrel hunting effort and harvest by Wildlife Management Unit (WMU).....	15
Table 1.14.....Fox Squirrel hunting effort and harvest by Wildlife Management Unit (WMU).....	16
Table 1.15.....Raccoon hunting effort and harvest by Wildlife Management Unit (WMU).....	16
Table 1.16.....Red Fox hunting effort and harvest by Wildlife Management Unit (WMU).....	17
Table 1.17.....Gray Fox hunting effort and harvest by Wildlife Management Unit (WMU).....	17
Table 1.18.....Coyote hunting effort and harvest by Wildlife Management Unit (WMU).....	18
Table 1.19.....Opossum hunting effort and harvest by Wildlife Management Unit (WMU).....	18
Table 1.20.....Percent change in harvest from 2014 to 2015 in Wildlife Management Units.....	19
Table 1.21.....Rabbit hunting effort and harvest by Administrative Region (AR).....	20
Table 1.22.....Non-Wild Quail hunting effort and harvest by Administrative Region (AR).....	20
Table 1.23.....Wild Quail hunting effort and harvest by Administrative Region (AR).....	21
Table 1.24.....Non-Wild Pheasant hunting effort and harvest by Administrative Region (AR).....	21
Table 1.25.....Wild Pheasant hunting effort and harvest by Administrative Region (AR).....	22
Table 1.26.....Dove hunting effort and harvest by Administrative Region (AR).....	22
Table 1.27.....Woodcock hunting effort and harvest by Administrative Region (AR).....	23
Table 1.28.....Crow hunting effort and harvest by Administrative Region (AR).....	23
Table 1.29.....Groundhog hunting effort and harvest by Administrative Region (AR).....	24
Table 1.30.....Gray Squirrel hunting effort and harvest by Administrative Region (AR).....	24
Table 1.31.....Fox Squirrel hunting effort and harvest by Administrative Region (AR).....	25
Table 1.32.....Raccoon hunting effort and harvest by Administrative Region (AR).....	25
Table 1.33.....Red Fox hunting effort and harvest by Administrative Region (AR).....	26
Table 1.34.....Gray Fox hunting effort and harvest by Administrative Region (AR).....	26
Table 1.35.....Coyote hunting effort and harvest by Administrative Region (AR).....	27
Table 1.36.....Opossum hunting effort and harvest by Administrative Region (AR).....	27
Table 1.37.....Percent change in harvest from 2014 to 2015 in Administrative Regions for selected species.....	28
Table 1.38.....Distribution of hunting effort and harvest in 2015.....	29
Table 1.39.....Statewide data from resident Illinois hunters, 2005-2015.....	33
Table 1.40.....Percent change in statewide harvest (1-year, 5-year, 10-year).....	39

SECTION 2: HUNTER ATTITUDES AND OPINIONS

LIST OF FIGURES	<u>Page</u>
Figure 2.1.....How hunters obtain information about hunting regulations in Illinois.....	40
Figure 2.2.....Percentage of hunters who obtain information from the IDNR website and save a pdf of the digest.....	40
Figure 2.3.....Where hunters normally obtain their paper copies of digests.....	41
Figure 2.4.....Number of Waterfowl Hunting Regulations and Hunting/Trapping digest paper copies taken by hunters per year.....	41
Figure 2.5.....Percentage of hunters who prefer IDNR combine Waterfowl digest and Hunting/Trapping Regulation digest.....	41
Figure 2.6.....Percentage of hunters who use the legal shooting times reference card in the digest.....	41
Figure 2.7.....Percentage of hunters who use social media to stay up to date with IDNR news.....	42
Figure 2.8.....Hunters’ use of the new sunrise /sunset table found in the 2015-16 IL Digest of Hunting and Trapping.....	42
Figure 2.9.....Hunters’ preferred version of the sunrise/sunset table.....	42
Figure 2.10.....Sunrise/sunset table qualities hunters prefer by version.....	42
Figure 2.11.....Types of property Illinois hunters* hunted most often.....	43
Figure 2.12.....Percent of hunters who indicated they hunted public land in Illinois during the 2015-16 season.....	44
Figure 2.13.....Harvest reporting procedures used by public land hunters.....	44
Figure 2.14.....Percentage of hunters who have ever hunted with/accompanied a youth during Illinois Youth Turkey Season.....	45
Figure 2.15.....Level of support for combining north and south zone youth turkey hunts into two weekends for turkey season.....	45
Figure 2.16.....Percentage of hunters who self-identified as a deer hunter.....	46
Figure 2.17.....Percentage of self-identified deer hunters who spent at least 1 day afield deer hunting in 2015-16.....	46
Figure 2.18.....Percentage of deer hunters that use each method to hunt deer in Illinois.....	46
Figure 2.19.....Total number of deer that hunters typically harvest each year.....	47
Figure 2.20.....Percentage of deer hunters in agreement with a bag limit on total deer harvested during archery season by method.....	47
Figure 2.21.....Deer hunter level of support for a continuous 10 day firearm season beginning the day after Thanksgiving by method.....	48
Figure 2.22.....Percentage of deer hunters in agreement with a bag limit on total deer harvested during archery season by harvest.....	49
Figure 2.23.....Deer hunter level of support for a continuous 10- day firearm season beginning the day after Thanksgiving by harvest.....	49
Figure 2.24.....Percentage of hunters who reported observing dead deer from July through October 2015.....	50
Figure 2.25.....Percentage of hunters that reported dead deer the observed to IDNR.....	50
Figure 2.26.....The frequency with which respondents purchase an Illinois hunting license.....	51
Figure 2.27.....How frequently respondents visit State Parks in Illinois.....	52
Figure 2.28.....Satisfaction with camping in Illinois state parks during a hunting trip.....	52
Figure 2.29.....Gender distribution of Illinois hunters.....	52

LIST OF TABLES	<u>Page</u>
Table 2.1.....Number of hunters who intended to hunt “listed species” and number who relied exclusively on public land to do so.....	54
Table 2.2.....Respondents’ agreement or disagreement with statements regarding opinions about the IDNR.....	54
Table 2.3.....Typical harvest and method of hunting.....	55
Table 2.4.....Number of dead deer seen by Illinois hunter respondents between July through October 2015.....	55
Table 2.5.....Number of dead deer Illinois hunters reported to the IDNR during 2015.....	56
Table 2.6.....Illinois counties in which hunters observed the most deer believed to have died from EHD or BTV.....	56
Table 2.7.....Deer hunters’ perceptions of the impact of EHD and BTV during 2015 on the deer population in areas hunted.....	57
Table 2.8.....Deer hunters’ perceptions of the impact of EHD and BTV on the Illinois deer population during 2015.....	57
Table 2.9.....Change in number of deer seen by Illinois deer hunters during the 2015-16 season compared to 5-years ago.....	57
Table 2.10.....Change in number of deer harvested during the Illinois 2015-16 deer season compared to 5-years ago.....	58
Table 2.11.....Hunters’ favorite species to hunt.....	58
Table 2.12.....Number of favorite species usually harvested as compared to other hunters.....	58
Table 2.13.....Respondents’ self-identified skill level in comparison to other hunters.....	59
Table 2.14.....Respondents’ agreement or disagreement with statements regarding attitudes toward hunting.....	59
Table 2.15.....Most popular state parks that respondents reported camping at while hunting within the past five years.....	60

LIST OF APPENDICES

Page

Appendix AIllinois Hunter Harvest Survey: 2015-2016 Season..... 61
Appendix BCover letter sent with first mailing of the 2015-2016 Illinois Hunter Harvest Survey 69
Appendix CThank you/reminder postcard sent as follow-up to the mailings..... 71
Appendix DCover letter sent with second mailing of the 2015-2016 Illinois Hunter Harvest Survey 72
Appendix ECover letter sent with third mailing of the 2015-2016 Illinois Hunter Harvest Survey 74
Appendix FMap of IDNR Wildlife Management Units..... 76
Appendix GMap of IDNR Administrative Regions..... 77
Appendix HSeason dates, bag limits, and shooting hours for the 2015-16 hunting season in Illinois..... 78

2015-2016
ILLINOIS HUNTER HARVEST REPORT

JOB COMPLETION REPORT

WILDLIFE HARVEST AND
HUMAN DIMENSIONS RESEARCH PROGRAM

STATE OF ILLINOIS

PROJECT NUMBER: W-112-R-25
STUDY 101
JOB NO. 101.1

Prepared by
Brent D. Williams, Ryan J. Conat,
Laura A. Schweizer, Linda K. Campbell,
and Craig A. Miller

Illinois Natural History Survey
Champaign, IL
December 02, 2016

Federal Aid in Wildlife Restoration
W-112-R-25

Illinois Department of Natural Resources

Wayne Rosenthal, Director
Illinois Department of Natural Resources

Mark G. Alessi, Acting Chief
Division of Wildlife

Equal opportunity to participate in programs of the Illinois Department of Natural Resources (IDNR) and those funded by the U.S. Fish and Wildlife Service and other agencies is available to all individuals regardless of race, sex, national origin, disability, age, religion or other non-merit factors. If you believe you have been discriminated against, contact the funding source's civil rights office and/or the Equal Employment Opportunity Officer, IDNR, One Natural Resources Way, Springfield, IL 62702-1271; 217/785-0067; TTY 217/782-9175

ABSTRACT

A random sample of 3,000 hunters was selected from 2015 Illinois resident Habitat Stamp and hunting license holders and mailed an 8-page self-administered questionnaire designed to query hunters about their hunting activities and harvest in Illinois. We received 1,447 questionnaires, 1,319 of which were usable, for a 47% response rate. Illinois resident license sales decreased 2.4% from 2014 (278,546) to the 2015 seasons (271,939). Total days afield decreased for 11 game species (rabbit, dove, crow, groundhog, fox and gray squirrel, turkey, coyote, opossum, red and gray fox) from 2014-15, but increased for 3 species (woodcock, deer, and raccoon). Harvest decreased for 10 game species (rabbit, dove, crow, groundhog raccoon, fox and gray squirrel, red fox, coyote, and opossum) from 2014-2015, but increased for 4 species (woodcock, turkey, deer, and gray fox). Harvest could not be compared for two game species (wild quail and wild pheasant). Efforts to distinguish between harvested wild birds and birds harvested on shooting preserves began in 2012, but suitable data points to develop adjustment factors have not been obtained. Hunters were also asked about hunting information, harvest reporting, youth turkey season preferences, deer bag limits and seasons, the effects of Epizootic Hemorrhagic Disease (EHD) and Blue Tongue Virus (BTV) on deer hunting, as well as their attitudes toward wildlife and hunting in Illinois.

OBJECTIVE

To survey resident hunters (18-24 game animal categories) annually to determine their activities and harvest in Illinois.

METHODS

A random sample of 3,000 hunters was selected from the Illinois resident hunting license database to receive questionnaires that aimed to query hunters about their harvest(s) in Illinois during the 2015-16 hunting seasons. All Illinois resident license types were included in the sample frame except for Youth (12,689). Methods for survey questionnaire mailings and follow-up reminders followed those of Miller et al. (1999). We mailed recipients a self-administered, 8-page questionnaire (Appendix A), cover letter (Appendix B), and

postage-paid return envelope on 16 May 2016. This mailing was followed with a thank you/reminder postcard (Appendix C) on 03 June 2016. On 21 June 2016, a second questionnaire, cover letter (Appendix D), and return envelope were mailed to non-respondents, and a second thank you/reminder postcard was mailed on 02 July 2016. A final questionnaire, cover letter (Appendix E), and return envelope were mailed on return envelope were mailed on 12 July 2016. Data were coded, entered, and analyzed using SPSS 24.0 (SPSS Inc. 2016). Estimates for species harvests, number of hunters, and days afield were computed using the formulas in Anderson and Campbell (1993). Harvest estimates of game species included only those harvested by Illinois resident hunters; non-resident harvests were not included. In an effort to discern whether some respondents had been reporting non-wild type harvest of certain species, hunters were asked to report non-wild quail, pheasant, and partridge harvest on the 2012-13 questionnaire. Format of this question was reverted to the 2011-12 and previous years' format. Therefore, estimates of wild quail, pheasant, and partridge harvested during 2012-13 were calculated differently than past estimates and the current estimates, so comparisons across years are to be made with extreme caution.

RESULTS

Section 1 – Hunter Harvest

License Sales

We sampled 3,000 Illinois resident hunters and received 1,447 questionnaires, of which 1,319 were usable, for a 47% response rate. A total of 271,939 Illinois residents purchased hunting licenses during 2015-16 hunting seasons, a 6.9% decrease from 2014-15 (278,546; Figure 1.1, Table 1.1).

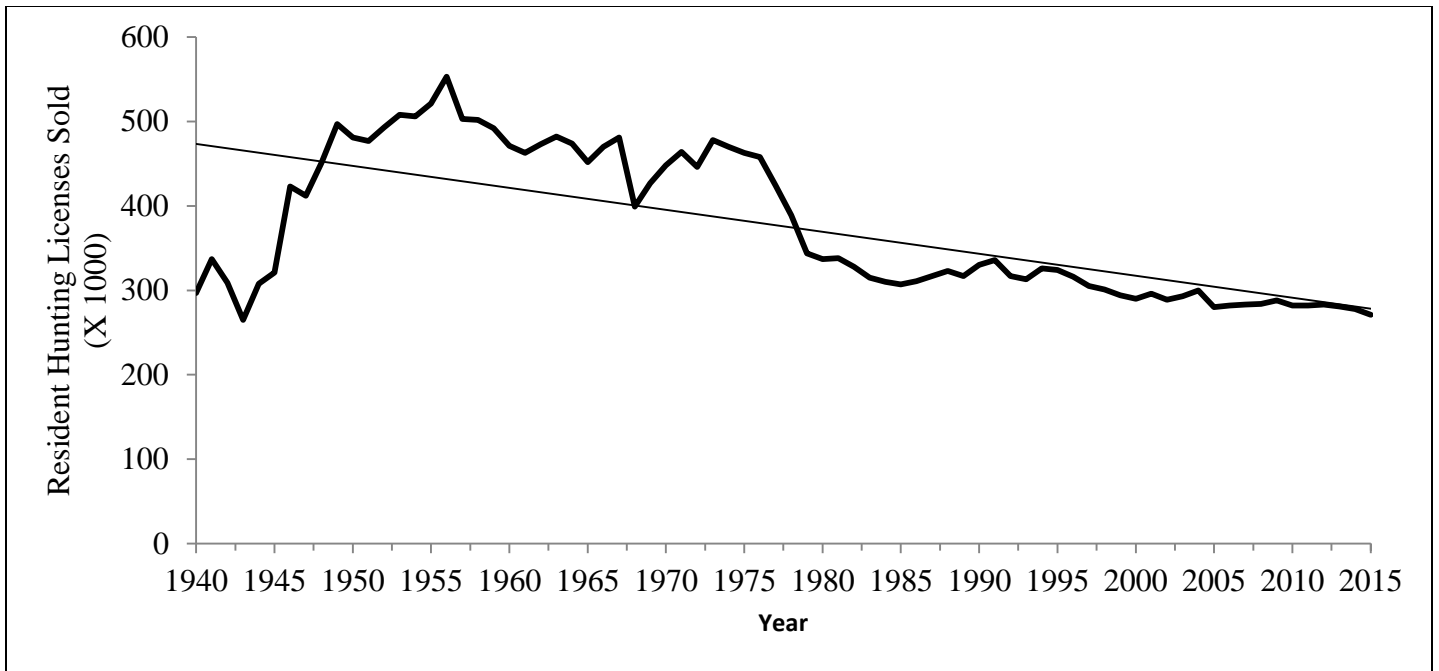


Figure 1.1. Number of resident hunting licenses purchased in Illinois, 1940-2015.

Almost all (98.7%) respondents reported that they purchased a hunting license in 2015 (Figure 1.2) and 88.9% indicated they had hunted in Illinois during the 2015-16 hunting seasons (March 2015 – February 2016) (Figure 1.3). Almost one quarter (24.7%) of hunting license holders reported that they purchased their hunting license online and 63.5% of the online license purchasers saved their license as a pdf.

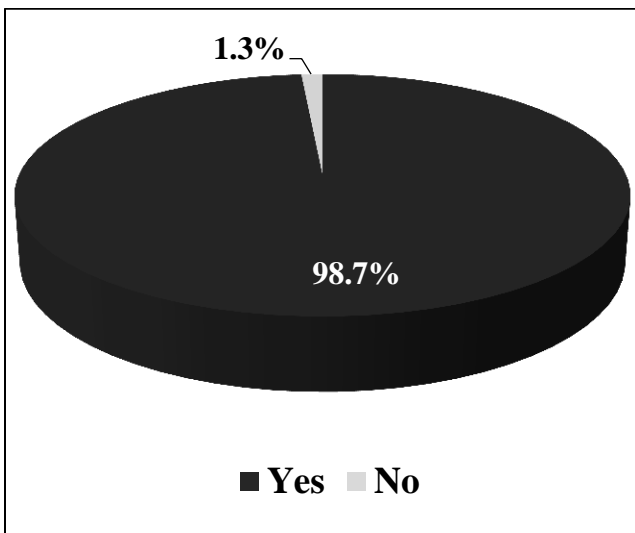


Figure 1.2. Percentage of hunters who purchased a Hunting license in 2015 ($n=1,319$).

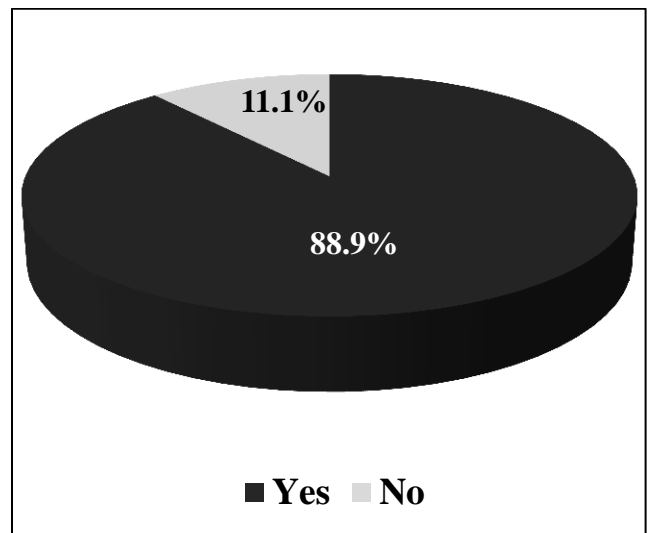


Figure 1.3. Percentage of license purchasers who hunted any wildlife species in Illinois between March 2015 and February 2016 ($n=1,302$).

Harvest

Harvest estimates for 2015-16 Illinois large and small game are presented in Table 1.2; 95.0% confidence intervals for all species are provided in Table 1.3. Harvest estimates for the 14 species, excluding deer, turkey, rail, and snipe, are available by wildlife management units (WMUs) and administrative regions in Tables 1.4-1.42. Maps of WMUs and administrative regions are located in Appendices F and G. Rail and snipe harvest estimates were excluded because respondents did not hunt or provide harvest data for these species. In addition, 20 Illinois hunters reported harvesting a total of 86 Eurasian Collared-Doves and 20 were unsure whether or not they harvested this species during the 2015-16 hunting season. Harvest estimates for all species from 2005 – 2015 are presented in Table 1.43 and percent change in harvest is provided in Table 1.44. Season dates and bag limits for species hunted can be located in Appendix H.

Estimates from 2015-16 suggest an increase from 2014-15 in the number of animals harvested for 4 game species: woodcock, turkey, deer, and red fox. Decreases in harvest estimates occurred for 11 species: rabbit, quail, pheasant, crow, groundhog, fox squirrel, gray squirrel, raccoon, gray fox, coyote, and opossum. Due to changes in methods used to estimate harvest of wild quail, wild pheasant, and wild gray partridge, figures were not comparable to previous estimates (except for 2011-12). Between-year changes in harvests could not be calculated for rail because hunters did not report any harvest either this year, the previous year, or both. Rabbit hunting trends from 2004-2012 and 2014-15 were not comparable to 2013 estimates due to changes in length of the 2013-14 season (Figure 1.4); however, standardizing harvest for all years by the total estimated days hunted per season made comparisons possible (Figure 1.5). Rabbit hunter effort and harvest reveal that hunter days afield per hunter have remained relatively consistent since 2004. Trends in estimated number of hunters, harvest, and days afield for dove, fox squirrel, gray squirrel, and coyote from 2005-2015 are provided in Figures 1.6-1.9.

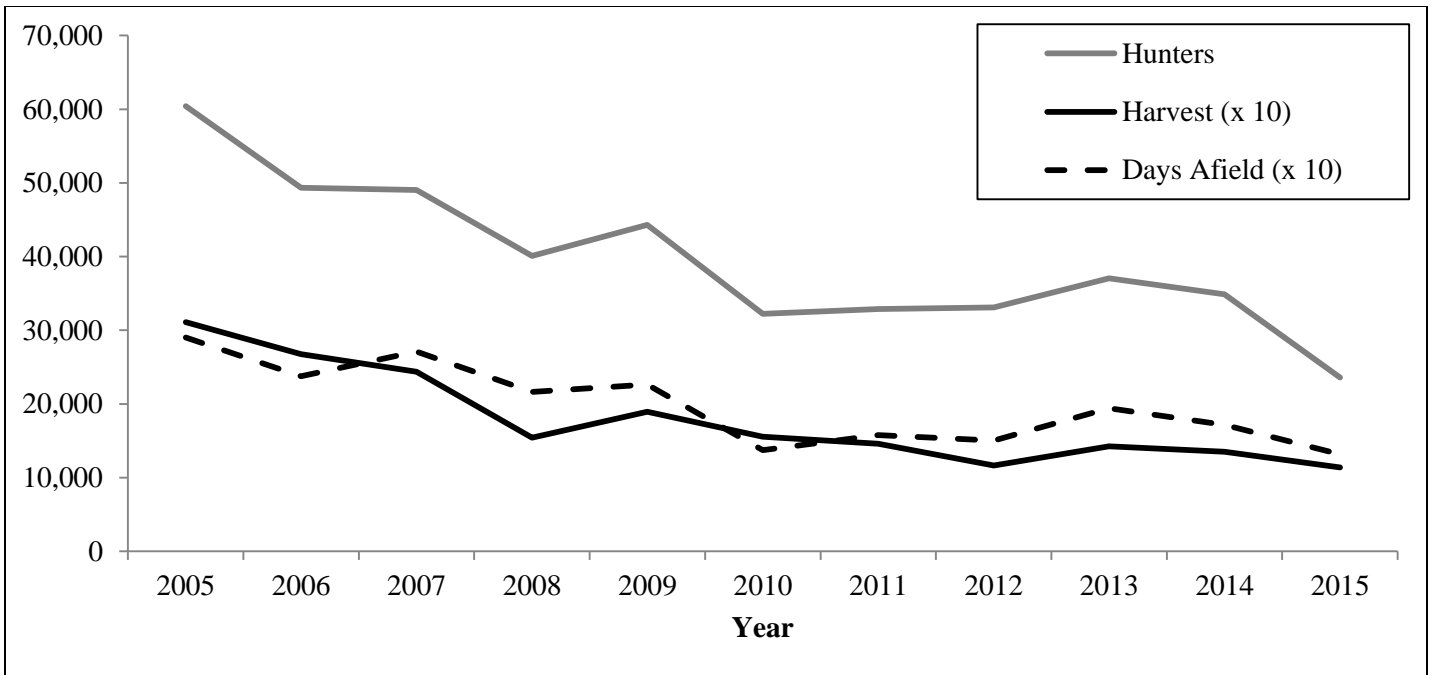


Figure 1.4. Illinois rabbit harvest and hunter activity (2005-2015).

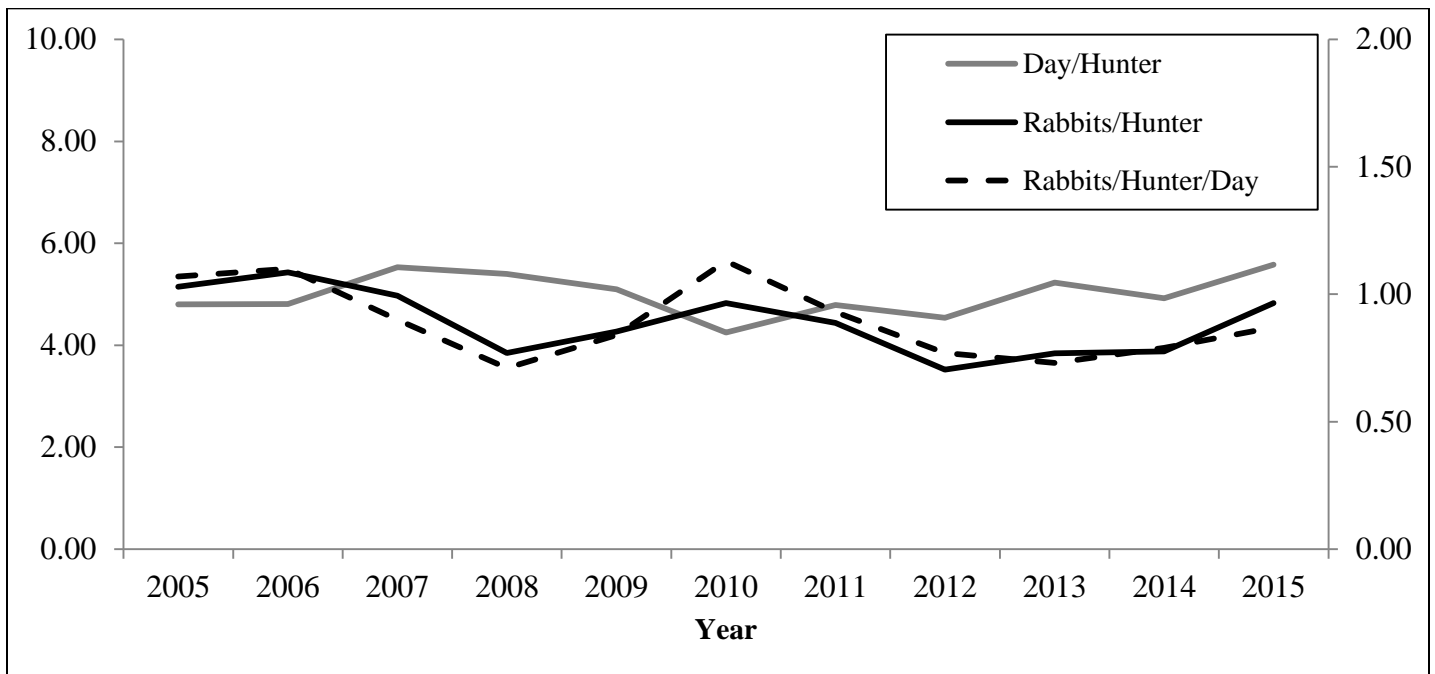


Figure 1.5. Number of days per hunter, harvest per hunter, and harvest per day per hunter from 2005-15 for rabbit hunting in Illinois.

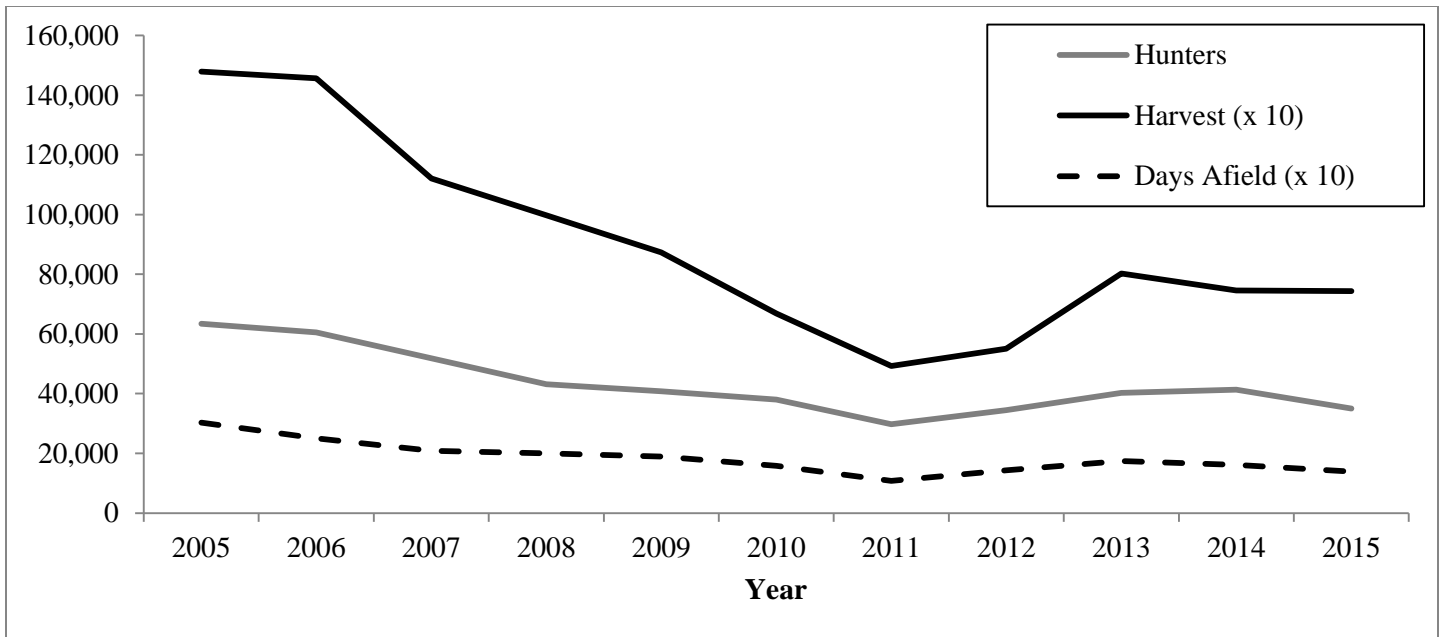


Figure 1.6. Illinois dove harvest and hunter activity (2005-2015).

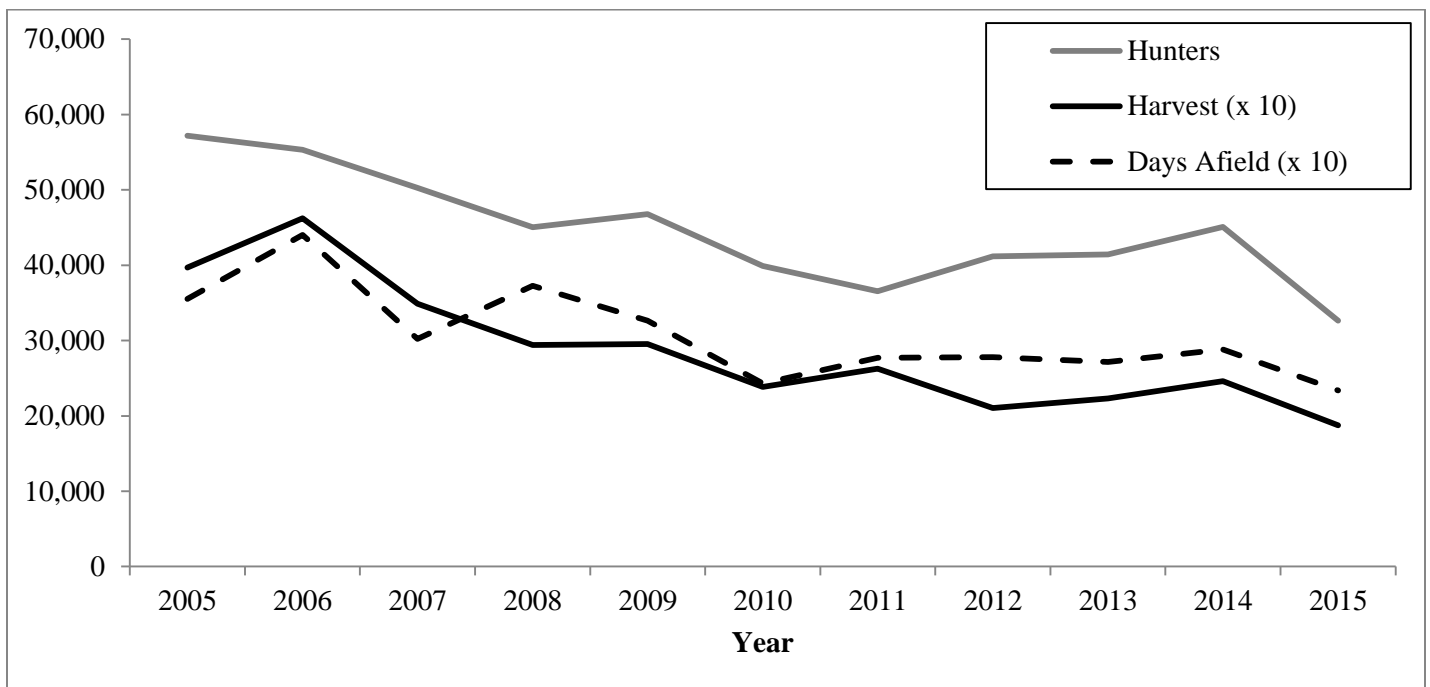


Figure 1.7. Illinois fox squirrel harvest and hunter activity (2005-2015).

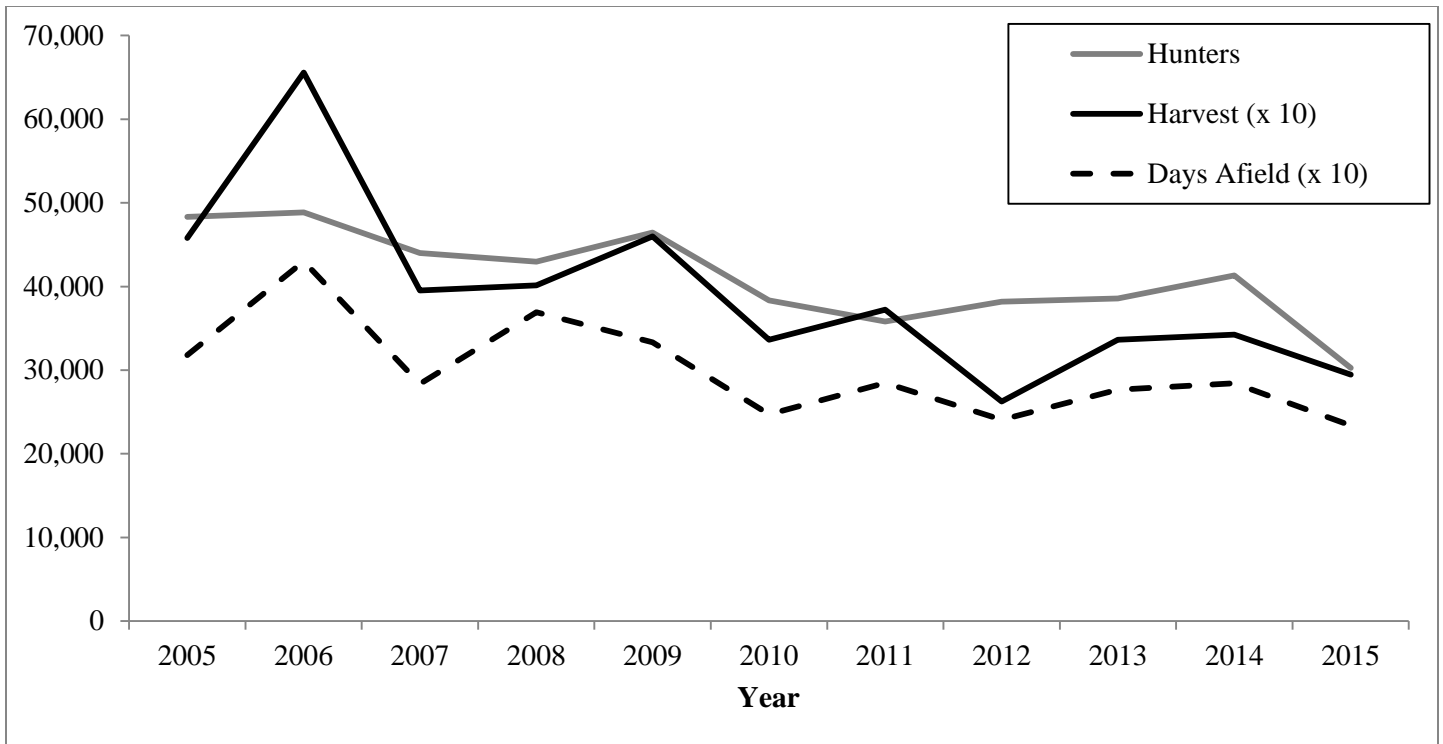


Figure 1.8. Illinois gray squirrel harvest and hunter activity (2005-2015).

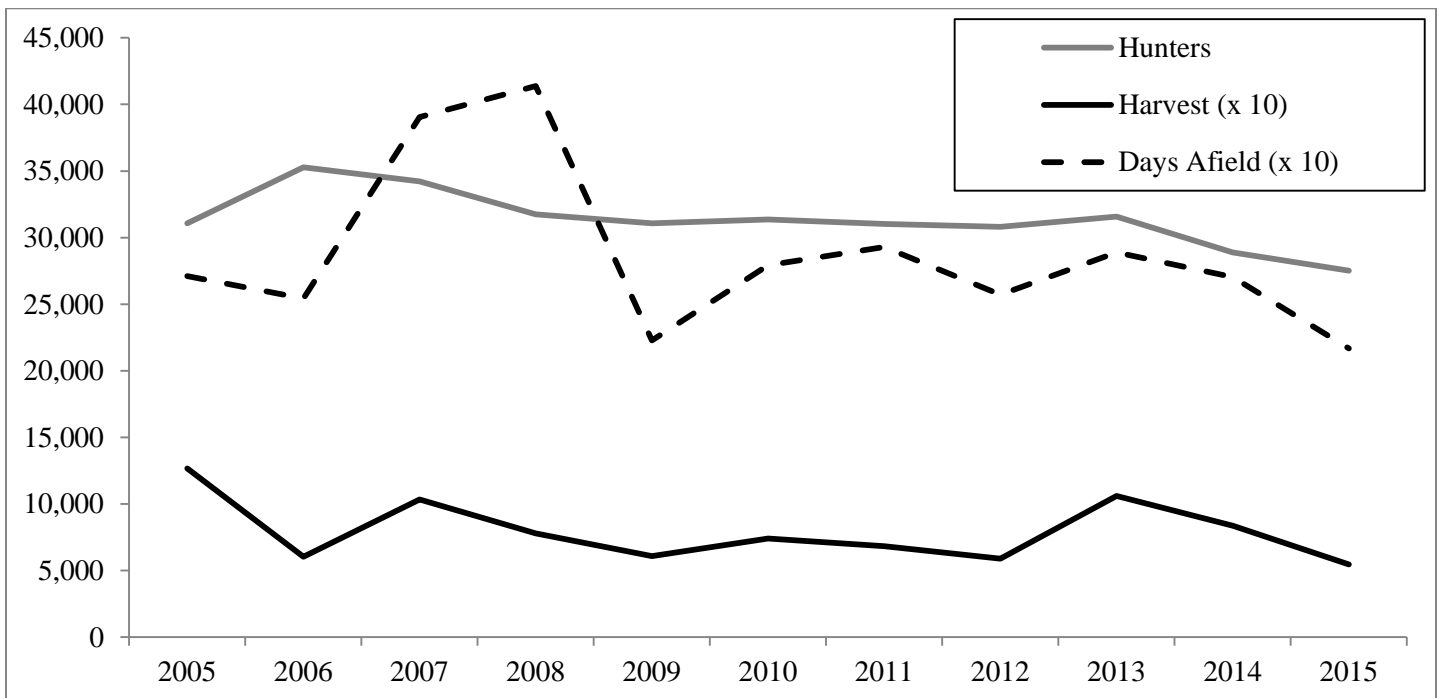


Figure 1.9. Illinois coyote harvest and hunter activity (2005-2015).

Table 1.1. Number of resident hunting licenses purchased in Illinois, 1938-2015.

Year	Licenses (x 1,000)	Year	Licenses (x 1,000)
1938	294	1977	424
1939	322	1978	389
1940	297	1979	344 ^a
1941	337	1980	337
1942	309	1981	338
1943	265	1982	328
1944	308	1983	315
1945	321	1984	310
1946	423	1985	307
1947	412	1986	311
1948	451	1987	317
1949	497	1988	323
1950	481	1989	317
1951	477	1990	330
1952	493	1991	336
1953	508	1992	317
1954	506	1993	313
1955	521	1994	326 ^b
1956	553	1995	324
1957	503	1996	316
1958	502	1997	305
1959	492	1998	301
1960	471	1999	294 ^c
1961	463	2000	290
1962	473	2001	296
1963	482	2002	289
1964	474	2003	293
1965	452	2004	300
1966	470	2005	280
1967	481	2006	282 ^d
1968	399	2007	283
1969	427	2008	284
1970	448	2009	288
1971	464	2010	282
1972	446	2011	282
1973	478	2012	283
1974	470	2013	281
1975	463	2014	278
1976	458	2015	271

^a Includes Sportsmen's (combination hunting/fishing) licenses beginning in 1979.

^b Includes senior citizen (≥ 65 years) hunting licenses beginning in 1994.

^c Includes senior citizen (≥ 65 years) Sportsmen's (combination hunting/fishing) licenses beginning in 1999.

^d Includes apprentice hunting licenses beginning in 2006.

Table 1.2. Summary of statewide data from the 2015 Hunter Harvest Survey ($n = 1,319$).

Species	Total Hunters	Percent of License Sales	Average Bag		Total Harvest	Days Hunting	
			Daily	Season		Average/Hunter	Total Hunter Days
Rabbit	23,586	9.10%	0.87	4.83	113,999	5.58	131,689
Non-wild Quail	4,717	1.82%	1.70	6.08	28,696	3.58	16,903
Wild Quail	7,665	2.96%	0.52	3.79	29,089	7.28	55,820
Non-wild Pheasant	21,031	8.11%	2.81	8.65	182,006	3.07	64,665
Wild Pheasant	13,955	5.38%	0.55	1.77	24,765	3.24	45,207
Dove	35,183	13.50%	5.38	21.27	744,140	3.96	138,371
Woodcock	590	0.23%	0.14	2.00	1,179	14.00	8,255
Crow	1,179	0.45%	1.77	3.83	4,521	2.17	2,555
Groundhog	2,359	0.91%	0.55	3.50	8,255	6.33	14,938
Fox Squirrel	32,627	12.59%	0.80	5.75	187,509	7.17	233,895
Gray Squirrel	30,269	11.68%	1.26	9.73	294,629	7.72	233,698
Turkey-Spring	42,651	16.45%	0.14	0.58	24,569	4.23	180,433
Turkey-Fall Shotgun	4,128	1.59%	0.11	0.33	1,376	2.90	11,990
Turkey-Fall Archery	14,348	5.53%	0.01	0.22	3,145	16.40	235,271
Deer-Regular Firearm	144,661	55.80%	0.14	0.60	86,875	4.28	618,741
Deer-Muzzleloader	27,714	10.69%	0.09	0.23	6,486	2.75	76,262
Deer-Archery	96,899	37.38%	0.03	0.58	56,410	18.80	1,822,022
Deer-Late Winter Firearm Season	21,817	8.42%	0.11	0.27	5,897	2.46	53,658
Deer- Special CWD Season	6,486	2.50%	0.03	0.06	393	2.03	13,169
Raccoon	7,665	2.96%	1.05	10.62	81,372	10.15	77,834
Red Fox	1,179	0.45%	0.28	1.33	1,572	4.83	5,700
Gray Fox	393	0.15%	0.00	0.00	0	3.50	1,376
Coyote	27,517	10.61%	0.25	1.98	54,444	7.88	216,795
Opossum	786	0.30%	0.56	2.25	1,769	4.00	3,145

Table 1.3. Estimated number (\pm 95% confidence interval) of Resident Licensed Hunters and Harvest in Illinois, 2015-16 seasons ($n=1,319$).

Species	n	Total Estimated Hunters			Estimated Average Season Bag			Total Estimated Harvest		
Rabbit	120	23,586	+	4,106	4.83	+	1.40	113,999	+	41,534
Non-Wild Quail	24	4,717	+	1,908	6.08	+	2.99	28,696	+	19,476
Wild Quail	39	7,665	+	2,418	3.79	+	1.84	29,089	+	18,065
Non-Wild Pheasant	107	21,031	+	3,898	8.65	+	4.20	182,006	+	102,206
Wild Pheasant	71	13,955	+	3,222	1.77	+	0.74	24,765	+	12,757
Dove	178	35,183	+	4,878	21.27	+	5.92	744,140	+	250,190
Woodcock	3	590	+	680	2.00	+	2.99	1,179	+	2,139
Crow	6	1,179	+	961	3.83	+	3.14	4,521	+	5,384
Groundhog	12	2,359	+	1,356	3.50	+	1.98	8,255	+	7,029
Fox Squirrel	166	32,627	+	4,735	5.75	+	1.26	187,509	+	52,984
Gray Squirrel	154	30,269	+	4,585	9.73	+	2.37	294,629	+	91,158
Raccoon	39	7,665	+	2,418	10.62	+	4.83	81,372	+	48,324
Red Fox	6	1,179	+	961	1.33	+	1.20	1,572	+	1,966
Gray Fox	2	393	+	556	0.00	+	0.00	0	+	0
Coyote	140	27,517	+	4,397	1.98	+	0.58	54,444	+	19,536
Opossum	4	786	+	785	2.25	+	0.94	1,769	+	2,010

Table 1.4. Summary of 2015-16 hunting effort and harvest in Wildlife Management Units in Illinois for the species listed below.

Rabbit (<i>n</i> = 120)						
Wildlife Management Units	Estimated Number of Hunters	Percent of Hunters	Average Bag		Estimated Total Harvest	Estimated Days Afield
			Daily	Season		
Northwest Hills	1,572	6.67	0.45	3.00	4,717	10,417
Northeast Moraine	197	0.83	-	-	-	197
Mississippi Border-North	2,162	9.17	0.98	4.27	9,238	9,434
Mississippi Border-South	2,948	12.50	0.83	5.07	14,938	18,083
Western Prairie/Forest	2,359	10.00	0.49	2.25	5,307	10,810
Central Sand Prairie	1,179	5.00	0.70	2.33	2,752	3,931
Grand Prairie	5,503	23.33	0.78	2.71	14,938	19,262
Southern Plain	6,093	25.83	0.93	6.48	39,507	42,258
Wabash Border	590	2.50	1.08	4.67	2,752	2,555
Shawnee Hills	983	4.17	1.35	20.20	19,852	14,741
Unknown	-	-	-	-	-	-
Statewide	23,586	100.00	0.87	4.83	113,999	131,689

Table 1.5. Summary of 2015-16 hunting effort and harvest in Wildlife Management Units in Illinois for the species listed below.

Non-Wild Quail (<i>n</i> = 24)						
Wildlife Management Units	Estimated Number of Hunters	Percent of Hunters	Average Bag		Estimated Total Harvest	Estimated Days Afield
			Daily	Season		
Northwest Hills	-	-	-	-	-	-
Northeast Moraine	197	4.17	2.00	8.00	1,572	786
Mississippi Border-North	-	-	-	-	-	-
Mississippi Border-South	197	4.17	1.00	2.00	393	393
Western Prairie/Forest	-	-	-	-	-	-
Central Sand Prairie	590	12.50	0.00	0.00	393	1,179
Grand Prairie	1,769	37.50	2.10	9.78	17,296	8,255
Southern Plain	1,966	41.67	1.44	4.60	9,041	6,290
Wabash Border	-	-	-	-	-	-
Shawnee Hills	-	-	-	-	-	-
Unknown	-	-	-	-	-	-
Statewide	4,717	100.00	1.70	6.08	28,696	16,903

Table 1.6. Summary of 2015-16 hunting effort and harvest in Wildlife Management Units in Illinois for the species listed below.

Wild Quail (<i>n</i> = 39)						
Wildlife Management Units	Estimated Number of Hunters	Percent of Hunters	Average Bag		Estimated Total Harvest	Estimated Days Afield
			Daily	Season		
Northwest Hills	197	2.56	-	-	-	786
Northeast Moraine	-	-	-	-	-	-
Mississippi Border-North	393	5.13	-	-	-	1,179
Mississippi Border-South	590	7.69	2.75	7.33	4,324	1,572
Western Prairie/Forest	983	12.82	0.47	1.40	1,376	2,948
Central Sand Prairie	786	10.26	0.40	1.00	786	1,966
Grand Prairie	1,769	23.08	0.62	2.89	5,110	8,255
Southern Plain	2,162	28.21	0.37	3.73	8,059	21,621
Wabash Border	197	2.56	0.60	12.00	2,359	3,931
Shawnee Hills	393	5.13	0.18	6.00	2,359	12,776
Unknown	197	2.56	6.00	24.00	4,717	786
Statewide	7,665	100.00	0.52	3.79	29,089	55,820

Table 1.7. Summary of 2015-16 hunting effort and harvest in Wildlife Management Units in Illinois for the species listed below.

Non-Wild Pheasant (<i>n</i> = 107)						
Wildlife Management Units	Estimated Number of Hunters	Percent of Hunters	Average Bag		Estimated Total Harvest	Estimated Days Afield
			Daily	Season		
Northwest Hills	1,769	8.41	1.98	9.44	16,707	8,452
Northeast Moraine	1,769	8.41	3.26	11.22	19,852	6,093
Mississippi Border-North	197	0.93	3.00	3.00	590	197
Mississippi Border-South	983	4.67	1.56	2.80	2,752	1,769
Western Prairie/Forest	983	4.67	3.20	3.20	3,145	983
Central Sand Prairie	2,359	11.21	2.52	5.67	13,365	5,307
Grand Prairie	9,828	46.73	3.35	11.92	117,144	34,986
Southern Plain	2,555	12.15	1.16	2.77	7,076	6,093
Wabash Border	590	2.80	1.75	2.33	1,376	786
Shawnee Hills	-	-	-	-	-	-
Unknown	-	-	-	-	-	-
Statewide	21,031	100.00	2.81	8.65	182,006	64,665

Table 1.8. Summary of 2015-16 hunting effort and harvest in Wildlife Management Units in Illinois for the species listed below.

Wild Pheasant (<i>n</i> = 71)						
Wildlife Management Units	Estimated Number of Hunters	Percent of Hunters	Average Bag		Estimated Total Harvest	Estimated Days Afield
			Daily	Season		
Northwest Hills	1,179	8.45	0.27	0.67	786	2,948
Northeast Moraine	786	5.63	1.92	6.25	4,914	2,555
Mississippi Border-North	590	4.23	0.17	0.33	197	1,179
Mississippi Border-South	-	-	-	-	-	-
Western Prairie/Forest	590	4.23	0.22	0.67	393	1,769
Central Sand Prairie	590	4.23	1.25	1.67	983	786
Grand Prairie	8,648	61.97	0.54	1.98	17,100	31,841
Southern Plain	1,376	9.86	0.10	0.29	393	3,931
Wabash Border	-	-	-	-	-	-
Shawnee Hills	-	-	-	-	-	-
Unknown	197	1.41	-	-	-	197
Statewide	13,955	100.00	0.55	1.77	24,765	45,207

Table 1.9. Summary of 2015-16 hunting effort and harvest in Wildlife Management Units in Illinois for the species listed below.

Dove (<i>n</i> = 178)						
Wildlife Management Units	Estimated Number of Hunters	Percent of Hunters	Average Bag		Estimated Total Harvest	Estimated Days Afield
			Daily	Season		
Northwest Hills	2,162	6.18	3.39	13.55	29,286	8,648
Northeast Moraine	1,376	3.93	3.73	19.71	27,124	7,272
Mississippi Border-North	983	2.81	2.29	7.80	7,665	3,341
Mississippi Border-South	4,128	11.80	4.77	19.52	80,586	16,903
Western Prairie/Forest	3,931	11.24	5.24	20.95	82,355	15,724
Central Sand Prairie	2,752	7.87	7.97	22.21	61,127	7,665
Grand Prairie	11,400	32.58	7.30	25.31	288,536	39,507
Southern Plain	6,486	18.54	4.95	18.61	120,682	24,372
Wabash Border	393	1.12	2.71	9.50	3,734	1,376
Shawnee Hills	590	1.69	2.17	21.00	12,383	5,700
Unknown	786	2.25	3.90	39.00	30,662	7,862
Statewide	35,183	100.00	5.38	21.27	744,140	138,371

Table 1.10. Summary of 2015-16 hunting effort and harvest in Wildlife Management Units in Illinois for the species listed below.

Woodcock (<i>n</i> = 3)						
Wildlife Management Units	Estimated Number of Hunters	Percent of Hunters	Average Bag		Estimated Total Harvest	Estimated Days Afield
			Daily	Season		
Northwest Hills	-	-	-	-	-	-
Northeast Moraine	-	-	-	-	-	-
Mississippi Border-North	-	-	-	-	-	-
Mississippi Border-South	-	-	-	-	-	-
Western Prairie/Forest	-	-	-	-	-	-
Central Sand Prairie	-	-	-	-	-	-
Grand Prairie	197	33.33	0.07	1.00	197	2,948
Southern Plain	197	33.33	0.00	0.00	-	2,359
Wabash Border	-	-	-	-	-	-
Shawnee Hills	197	33.33	0.33	5.00	983	2,948
Unknown	-	-	-	-	-	-
Statewide	590	100	0.14	2	1,179	8,255

Table 1.11. Summary of 2015-16 hunting effort and harvest in Wildlife Management Units in Illinois for the species listed below.

Crow (<i>n</i> = 6)						
Wildlife Management Units	Estimated Number of Hunters	Percent of Hunters	Average Bag		Estimated Total Harvest	Estimated Days Afield
			Daily	Season		
Northwest Hills	-	-	-	-	-	-
Northeast Moraine	-	-	-	-	-	-
Mississippi Border-North	197	25.00	2.00	6.00	1,179	590
Mississippi Border-South	-	-	-	-	-	-
Western Prairie/Forest	393	33.33	1.25	2.50	983	786
Central Sand Prairie	-	-	-	-	-	-
Grand Prairie	-	-	-	-	-	-
Southern Plain	590	50.00	2.00	4.00	2,359	1,179
Wabash Border	-	-	-	-	-	-
Shawnee Hills	-	-	-	-	-	-
Unknown	-	-	-	-	-	-
Statewide	1,179	108.33	1.77	3.83	4,521	2,555

Table 1.12. Summary of 2015-16 hunting effort and harvest in Wildlife Management Units in Illinois for the species listed below.

Groundhog (<i>n</i> = 12)						
Wildlife Management Units	Estimated Number of Hunters	Percent of Hunters	Average Bag		Estimated Total Harvest	Estimated Days Afield
			Daily	Season		
Northwest Hills	393	50.00	0.30	3.00	1,179	3,931
Northeast Moraine	-	-	-	-	-	-
Mississippi Border-North	197	25.00	-	-	-	983
Mississippi Border-South	197	25.00	1.33	4.00	786	590
Western Prairie/Forest	197	25.00	-	-	-	3,931
Central Sand Prairie	-	-	-	-	-	-
Grand Prairie	393	50.00	2.14	7.50	2,948	1,376
Southern Plain	590	75.00	1.36	5.00	2,948	2,162
Wabash Border	197	25.00	0.14	1.00	197	1,376
Shawnee Hills	197	25.00	0.33	1.00	197	590
Unknown	-	-	-	-	-	-
Statewide	2,359	300.00	0.55	3.50	8,255	14,938

Table 1.13. Summary of 2015-16 hunting effort and harvest in Wildlife Management Units in Illinois for the species listed below.

Gray Squirrel (<i>n</i> = 154)						
Wildlife Management Units	Estimated Number of Hunters	Percent of Hunters	Average Bag		Estimated Total Harvest	Estimated Days Afield
			Daily	Season		
Northwest Hills	1,179	3.90	1.24	8.67	10,221	8,255
Northeast Moraine	393	1.30	1.00	4.50	1,769	1,769
Mississippi Border-North	2,555	8.44	1.11	6.15	15,724	14,152
Mississippi Border-South	6,290	20.78	1.42	13.53	85,106	60,144
Western Prairie/Forest	2,752	9.09	1.03	11.43	31,448	30,465
Central Sand Prairie	393	1.30	0.33	1.00	393	1,179
Grand Prairie	3,538	11.69	0.52	3.33	11,793	22,603
Southern Plain	10,024	33.12	1.36	8.41	84,320	61,913
Wabash Border	1,572	5.19	1.40	13.13	20,638	14,741
Shawnee Hills	1,572	5.19	1.80	21.13	33,217	18,476
Unknown	-	-	-	-	-	-
Statewide	30,269	100.00	1.26	9.73	294,629	233,698

Table 1.14. Summary of 2015-16 hunting effort and harvest in Wildlife Management Units in Illinois for the species listed below.

Fox Squirrel (<i>n</i> = 166)						
Wildlife Management Units	Estimated Number of Hunters	Percent of Hunters	Average Bag		Estimated Total Harvest	Estimated Days Afield
			Daily	Season		
Northwest Hills	1,966	6.02	1.31	6.80	13,365	10,221
Northeast Moraine	197	0.60	1.50	3.00	590	393
Mississippi Border-North	3,341	10.24	1.01	5.12	17,100	16,903
Mississippi Border-South	5,110	15.66	0.81	7.27	37,148	45,600
Western Prairie/Forest	4,128	12.65	0.86	7.14	29,483	34,200
Central Sand Prairie	1,179	3.61	0.58	7.00	8,255	14,348
Grand Prairie	6,290	19.28	0.90	5.50	34,593	38,327
Southern Plain	8,059	24.70	0.79	4.37	35,183	44,813
Wabash Border	1,376	4.22	0.62	6.29	8,648	13,955
Shawnee Hills	983	3.01	0.21	3.20	3,145	15,134
Unknown	-	-	-	-	-	-
Statewide	32,627	100.00	0.80	5.75	187,509	233,895

Table 1.15. Summary of 2015-16 hunting effort and harvest in Wildlife Management Units in Illinois for the species listed below.

Raccoon (<i>n</i> = 39)						
Wildlife Management Units	Estimated Number of Hunters	Percent of Hunters	Average Bag		Estimated Total Harvest	Estimated Days Afield
			Daily	Season		
Northwest Hills	1,376	17.95	1.29	8.86	12,186	9,434
Northeast Moraine	197	2.56	0.75	6.00	1,179	1,572
Mississippi Border-North	590	7.69	1.94	22.67	13,365	6,879
Mississippi Border-South	590	7.69	0.61	8.33	4,914	8,059
Western Prairie/Forest	983	12.82	1.10	17.00	16,707	15,134
Central Sand Prairie	393	5.13	1.74	16.50	6,486	3,734
Grand Prairie	2,359	30.77	0.77	9.42	22,210	28,893
Southern Plain	393	5.13	0.60	1.50	590	983
Wabash Border	786	10.26	1.19	4.75	3,734	3,145
Shawnee Hills	-	-	-	-	-	-
Unknown	-	-	-	-	-	-
Statewide	7,665	100.00	1.05	10.62	81,372	77,834

Table 1.16. Summary of 2015-16 hunting effort and harvest in Wildlife Management Units in Illinois for the species listed below.

Red Fox (<i>n</i> = 6)						
Wildlife Management Units	Estimated Number of Hunters	Percent of Hunters	Average Bag		Estimated Total Harvest	Estimated Days Afield
			Daily	Season		
Northwest Hills	-	-	-	-	-	-
Northeast Moraine	-	-	-	-	-	-
Mississippi Border-North	197	16.67	1.00	1.00	197	197
Mississippi Border-South	197	16.67	-	-	-	393
Western Prairie/Forest	-	-	-	-	-	-
Central Sand Prairie	-	-	-	-	-	-
Grand Prairie	197	16.67	0.20	2.00	393	1,966
Southern Plain	393	33.33	0.83	2.50	983	1,179
Wabash Border	197	16.67	-	-	-	1,966
Shawnee Hills	-	-	-	-	-	-
Unknown	-	-	-	-	-	-
Statewide	1,179	100.00	0.28	1.33	1,572	5,700

Table 1.17. Summary of 2015-16 hunting effort and harvest in Wildlife Management Units in Illinois for the species listed below.

Gray Fox (<i>n</i> = 2)						
Wildlife Management Units	Estimated Number of Hunters	Percent of Hunters	Average Bag		Estimated Total Harvest	Estimated Days Afield
			Daily	Season		
Northwest Hills	-	-	-	-	-	-
Northeast Moraine	-	-	-	-	-	-
Mississippi Border-North	-	-	-	-	-	-
Mississippi Border-South	197	50.00	-	-	-	393
Western Prairie/Forest	-	-	-	-	-	-
Central Sand Prairie	-	-	-	-	-	-
Grand Prairie	197	50.00	-	-	-	983
Southern Plain	-	-	-	-	-	-
Wabash Border	-	-	-	-	-	-
Shawnee Hills	-	-	-	-	-	-
Unknown	-	-	-	-	-	-
Statewide	393	100.00	0.00	0	0	1,376

Table 1.18. Summary of 2015-16 hunting effort and harvest in Wildlife Management Units in Illinois for the species listed below.

Coyote (<i>n</i> = 140)						
Wildlife Management Units	Estimated Number of Hunters	Percent of Hunters	Average Bag		Estimated Total Harvest	Estimated Days Afield
			Daily	Season		
Northwest Hills	2,948	10.71	0.11	0.93	2,752	25,158
Northeast Moraine	393	1.43	0.33	1.00	393	1,179
Mississippi Border-North	2,948	10.71	0.33	1.67	4,914	14,741
Mississippi Border-South	1,769	6.43	0.26	2.22	3,931	15,331
Western Prairie/Forest	3,734	13.57	0.15	1.32	4,914	33,020
Central Sand Prairie	983	3.57	0.13	1.40	1,376	10,614
Grand Prairie	8,452	30.71	0.41	3.21	27,124	65,648
Southern Plain	4,521	16.43	0.17	1.39	6,290	37,541
Wabash Border	1,179	4.29	0.13	1.00	1,179	8,845
Shawnee Hills	590	2.14	0.33	2.67	1,572	4,717
Unknown	-	-	-	-	-	-
Statewide	27,517	100.00	0.25	1.98	54,444	216,795

Table 1.19. Summary of 2015-16 hunting effort and harvest in Wildlife Management Units in Illinois for the species listed below.

Opossum (<i>n</i> = 4)						
Wildlife Management Units	Estimated Number of Hunters	Percent of Hunters	Average Bag		Estimated Total Harvest	Estimated Days Afield
			Daily	Season		
Northwest Hills	-	-	-	-	-	-
Northeast Moraine	-	-	-	-	-	-
Mississippi Border-North	-	-	-	-	-	-
Mississippi Border-South	-	-	-	-	-	-
Western Prairie/Forest	-	-	-	-	-	-
Central Sand Prairie	197	25.00	0.30	3.00	590	1,966
Grand Prairie	-	-	-	-	-	-
Southern Plain	590	75.00	1.00	2.00	1,179	1,179
Wabash Border	-	-	-	-	-	-
Shawnee Hills	-	-	-	-	-	-
Unknown	-	-	-	-	-	-
Statewide	786	100.00	0.56	2.25	1,769	3,145

Table 1.20. Percent change in harvest from 2014-15 to 2015-16 in Wildlife Management Units for selected species.

Wildlife Management Unit	Rabbit ^a	Non-Wild Quail	Wild Quail	Non-Wild Pheasant	Wild Pheasant	Dove	Fox Squirrel	Gray Squirrel	Raccoon	Red Fox	Gray Fox	Coyote
Northwest Hills	+2025%	--- ^a	--- ^a	-7%	-76%	+39%	+234%	+156%	+174%	--- ^a	--- ^a	-78%
Northeast Moraine	--- ^a	+254%	--- ^a	-55%	+453%	+205%	--- ^a	+99%	--- ^a	--- ^a	--- ^a	-78%
Mississippi Border-North	+81%	--- ^a	--- ^a	-97%	-85%	-78%	+221%	+115%	+254%	--- ^a	--- ^a	+5%
Mississippi Border-South	-41%	-95%	+2%	-67%	--- ^a	+30%	-33%	-12%	+11%	--- ^a	--- ^a	-43%
Western Prairie Forest	-54%	--- ^a	-90%	-95%	-86%	-32%	+11%	+516%	+37%	--- ^a	--- ^a	-18%
Central Sand Prairie	+1140%	--- ^a	-56%	+67%	--- ^a	+101%	+148%	-65%	+387%	--- ^a	--- ^a	+519%
Grand Prairie	-63%	+42%	-56%	+5%	-45%	-3%	-53%	-69%	+25%	+77%	--- ^a	-11%
Southern Plain	+35%	-37%	-43%	-36%	-80%	+9%	-34%	-44%	-97%	+121%	--- ^a	+23%
Wabash Border	-85%	--- ^a	-52%	-38%	--- ^a	-87%	-51%	-22%	-82%	--- ^a	--- ^a	-92%
Shawnee Hills	+306%	--- ^a	+77%	--- ^a	--- ^a	-55%	-54%	+167%	--- ^a	--- ^a	--- ^a	+136%

^a Percentage change could not be calculated in certain WMU's due to no harvest in 2014 and/or 2015 in those units.

Table 1.21. Summary of 2015-16 hunting effort and success in administrative regions in Illinois for the species listed below.

Rabbit (<i>n</i> = 120)						
Administrative Region	Estimated Number of Hunters	Percent of Hunters	Average Bag		Estimated Total Harvest	Estimated Days Afield
			Daily	Season		
Region 1	5,110	21.67	0.48	2.65	13,562	28,303
Region 2	786	3.33	0.33	0.50	393	1,179
Region 3	3,734	15.83	0.77	3.00	11,203	14,545
Region 4	8,059	34.17	0.98	4.05	32,627	33,414
Region 5	5,897	25.00	1.04	9.53	56,213	54,248
Unknown	-	-	-	-	-	-
Statewide	23,586	100.00	0.87	4.83	113,999	131,689

Table 1.22. Summary of 2015-16 hunting effort and success in administrative regions in Illinois for the species listed below.

Non-Wild Quail (<i>n</i> = 24)						
Administrative Region	Estimated Number of Hunters	Percent of Hunters	Average Bag		Estimated Total Harvest	Estimated Days Afield
			Daily	Season		
Region 1	983	20.83	1.26	4.80	4,717	3,734
Region 2	393	8.33	2.67	8.00	3,145	1,179
Region 3	590	12.50	2.71	19.00	11,203	4,128
Region 4	1,769	37.50	1.00	3.11	5,503	5,503
Region 5	983	20.83	1.75	4.20	4,128	2,359
Unknown	-	-	-	-	-	-
Statewide	4,717	100.00	1.70	6.08	28,696	16,903

Table 1.23. Summary of 2015-16 hunting effort and success in administrative regions in Illinois for the species listed below.

Wild Quail (<i>n</i> = 39)						
Administrative Region	Estimated Number of Hunters	Percent of Hunters	Average Bag		Estimated Total Harvest	Estimated Days Afield
			Daily	Season		
Region 1	1,179	15.79	0.41	1.17	1,376	3,341
Region 2	-	-	-	-	-	-
Region 3	786	10.53	0.40	2.00	1,572	3,931
Region 4	3,341	44.74	0.89	3.18	10,614	11,990
Region 5	2,162	28.95	0.30	5.00	10,810	35,772
Unknown	197	2.63	6.00	24.00	4,717	786
Statewide	7,665	100.00	0.52	3.79	29,089	55,820

Table 1.24. Summary of 2015-16 hunting effort and success in administrative regions in Illinois for the species listed below.

Non-Wild Pheasants (<i>n</i> = 107)						
Administrative Region	Estimated Number of Hunters	Percent of Hunters	Average Bag		Estimated Total Harvest	Estimated Days Afield
			Daily	Season		
Region 1	6,486	30.84	2.17	5.67	36,755	16,903
Region 2	6,879	32.71	2.36	8.37	57,589	24,372
Region 3	2,162	10.28	6.00	30.55	66,041	11,007
Region 4	4,128	19.63	1.73	4.19	17,296	10,024
Region 5	1,376	6.54	1.83	3.14	4,324	2,359
Unknown	-	-	-	-	-	-
Statewide	21,031	100.00	2.81	8.65	182,006	64,665

Table 1.25. Summary of 2015-16 hunting effort and success in administrative regions in Illinois for the species listed below.

Wild Pheasants (<i>n</i> = 71)						
Administrative Region	Estimated Number of Hunters	Percent of Hunters	Average Bag		Estimated Total Harvest	Estimated Days Afield
			Daily	Season		
Region 1	3,145	22.86	0.40	1.00	3,145	7,862
Region 2	1,966	14.29	1.00	3.30	6,486	6,486
Region 3	4,717	34.29	0.46	1.79	8,452	18,279
Region 4	3,341	24.29	0.71	2.00	6,683	9,434
Region 5	590	4.29	-	-	-	2,948
Unknown	197	1.43	-	-	-	197
Statewide	13,955	100.00	0.55	1.77	24,765	45,207

Table 1.26. Summary of 2015-16 hunting effort and success in administrative regions in Illinois for the species listed below.

Doves (<i>n</i> = 178)						
Administrative Region	Estimated Number of Hunters	Percent of Hunters	Average Bag		Estimated Total Harvest	Estimated Days Afield
			Daily	Season		
Region 1	8,845	25.71	4.74	14.87	131,492	27,714
Region 2	2,555	7.43	4.08	15.69	40,096	9,828
Region 3	4,128	12.00	7.33	36.67	151,344	20,638
Region 4	12,383	36.00	6.31	22.94	284,015	45,010
Region 5	6,486	18.86	3.90	16.42	106,530	27,321
Unknown	786	2.29	3.90	39.00	30,662	7,862
Statewide	35,183	100.00	5.38	21.15	744,140	138,371

Table 1.27. Summary of 2015-16 hunting effort and success in administrative regions in Illinois for the species listed below.

Woodcock (<i>n</i> = 3)						
Administrative Region	Estimated Number of Hunters	Percent of Hunters	Average Bag		Estimated Total Harvest	Estimated Days Afield
			Daily	Season		
Region 1	-	-	-	-	-	-
Region 2	197	33.33	0.07	1.00	197	2,948
Region 3	-	-	-	-	-	-
Region 4	-	-	-	-	-	-
Region 5	393	66.67	0.19	2.50	983	5,307
Unknown	-	-	-	-	-	-
Statewide	590	100.00	0.14	2	1,179	8,255

Table 1.28. Summary of 2015-16 hunting effort and success in administrative regions in Illinois for the species listed below.

Crow (<i>n</i> = 6)						
Administrative Region	Estimated Number of Hunters	Percent of Hunters	Average Bag		Estimated Total Harvest	Estimated Days Afield
			Daily	Season		
Region 1	393	33.33	1.25	2.50	983	786
Region 2	-	-	-	-	-	-
Region 3	-	-	-	-	-	-
Region 4	393	200.00	1.20	3.00	1,179	983
Region 5	393	33.33	3.00	6.00	2,359	786
Unknown	-	-	-	-	-	-
Statewide	1,179	100.00	1.77	3.83	4,521	2,555

Table 1.29. Summary of 2015-16 hunting effort and success in administrative regions in Illinois for the species listed below.

Groundhog (<i>n</i> = 12)						
Administrative Region	Estimated Number of Hunters	Percent of Hunters	Average Bag		Estimated Total Harvest	Estimated Days Afield
			Daily	Season		
Region 1	786	33.33	0.13	1.50	1,179	8,845
Region 2	197	8.33	1.67	5.00	983	590
Region 3	393	16.67	1.33	6.00	2,359	1,769
Region 4	197	8.33	1.33	4.00	786	590
Region 5	786	33.33	0.94	3.75	2,948	3,145
Unknown	-	-	-	-	-	-
Statewide	2,359	100.00	0.55	3.50	8,255	14,938

Table 1.30. Summary of 2015-16 hunting effort and success in administrative regions in Illinois for the species listed below.

Gray Squirrel (<i>n</i> = 154)						
Administrative Region	Estimated Number of Hunters	Percent of Hunters	Average Bag		Estimated Total Harvest	Estimated Days Afield
			Daily	Season		
Region 1	3,341	11.04	0.95	5.12	17,100	18,083
Region 2	786	2.60	0.85	2.75	2,162	2,555
Region 3	3,538	11.69	0.71	5.89	20,834	29,286
Region 4	12,383	40.91	1.35	11.73	145,251	107,513
Region 5	10,221	33.77	1.43	10.69	109,282	76,262
Unknown	-	-	-	-	-	-
Statewide	30,269	100.00	1.26	9.73	294,629	233,698

Table 1.35. Summary of 2015-16 hunting effort and success in administrative regions in Illinois for the species listed below.

Fox Squirrel (<i>n</i> = 166)						
Administrative Region	Estimated Number of Hunters	Percent of Hunters	Average Bag		Estimated Total Harvest	Estimated Days Afield
			Daily	Season		
Region 1	7,665	23.49	0.86	4.59	35,183	40,686
Region 2	590	1.81	0.83	1.67	983	1,179
Region 3	4,128	12.65	0.57	4.24	17,493	30,465
Region 4	12,579	38.55	0.98	8.02	100,830	103,189
Region 5	7,665	23.49	0.57	4.31	33,020	58,375
Unknown	-	-	-	-	-	-
Statewide	32,627	100.00	0.80	5.75	187,509	233,895

Table 1.36. Summary of 2015-16 hunting effort and success in administrative regions in Illinois for the species listed below.

Raccoon (<i>n</i> = 39)						
Administrative Region	Estimated Number of Hunters	Percent of Hunters	Average Bag		Estimated Total Harvest	Estimated Days Afield
			Daily	Season		
Region 1	2,948	38.46	1.46	9.73	28,696	19,655
Region 2	197	2.56	0.70	7.00	1,376	1,966
Region 3	1,179	15.38	0.98	8.67	10,221	10,417
Region 4	2,359	30.77	0.88	15.83	37,345	42,651
Region 5	983	12.82	1.19	3.80	3,734	3,145
Unknown	-	-	-	-	-	-
Statewide	7,665	100.00	1.05	10.62	81,372	77,834

Table 1.33. Summary of 2015-16 hunting effort and success in administrative regions in Illinois for the species listed below.

Red Fox (<i>n</i> = 6)						
Administrative Region	Estimated Number of Hunters	Percent of Hunters	Average Bag		Estimated Total Harvest	Estimated Days Afield
			Daily	Season		
Region 1	197	16.67	1.00	1.00	197	197
Region 2	-	-	-	-	-	-
Region 3	393	33.33	0.10	1	393	3,931
Region 4	393	33.33	0.67	2.00	786	1,179
Region 5	197	16.67	0.50	1.00	197	393
Unknown	-	-	-	-	-	-
Statewide	1,179	100.00	0.28	1.33	1,572	5,700

Table 1.34. Summary of 2015-16 hunting effort and success in administrative regions in Illinois for the species listed below.

Gray Fox (<i>n</i> = 2)						
Administrative Region	Estimated Number of Hunters	Percent of Hunters	Average Bag		Estimated Total Harvest	Estimated Days Afield
			Daily	Season		
Region 1	197	50.00	-	-	-	983
Region 2	-	-	-	-	-	-
Region 3	-	-	-	-	-	-
Region 4	197	50.00	-	-	-	393
Region 5	-	-	-	-	-	-
Unknown	-	-	-	-	-	-
Statewide	393	100.00	-	-	-	1,376

Table 1.35. Summary of 2015-16 hunting effort and success in administrative regions in Illinois for the species listed below.

Coyote (<i>n</i> = 140)						
Administrative Region	Estimated Number of Hunters	Percent of Hunters	Average Bag		Estimated Total Harvest	Estimated Days Afield
			Daily	Season		
Region 1	9,238	33.57	0.24	1.87	17,296	73,510
Region 2	1,572	5.71	0.25	2.50	3,931	15,724
Region 3	4,128	15.00	0.28	1.62	6,683	24,176
Region 4	8,059	29.29	0.30	2.54	20,441	68,596
Region 5	4,521	16.43	0.18	1.35	6,093	34,789
Unknown	-	-	-	-	-	-
Statewide	27,517	100.00	0.25	1.98	54,444	216,795

Table 1.36. Summary of 2015-16 hunting effort and success in administrative regions in Illinois for the species listed below.

Opossum (<i>n</i> = 4)						
Administrative Region	Estimated Number of Hunters	Percent of Hunters	Average Bag		Estimated Total Harvest	Estimated Days Afield
			Daily	Season		
Region 1	-	-	-	-	-	-
Region 2	-	-	-	-	-	-
Region 3	-	-	-	-	-	-
Region 4	197	25.00	0.30	3.00	590	1,966
Region 5	590	75.00	1.00	2.00	1,179	1,179
Unknown	-	-	-	-	-	-
Statewide	786	100.00	0.56	2.25	1,769	3,145

Table 1.37. Percent change in harvest from 2014-15 to 2015-16 within administrative regions for selected species.

Administrative Regions	Rabbit	Non-Wild Quail	Wild Quail	Non-Wild Pheasant	Wild Pheasant	Fox Squirrel	Gray Squirrel	Dove	Raccoon	Red Fox	Gray Fox	Coyote
Region 1	-43	-82	-52	-74	-82	-9	-25	-13	+45	-12	--- ^a	-45
Region 2	-85	+608	--- ^a	-30	+317	-87	-80	+2	--- ^a	--- ^a	--- ^a	+121
Region 3	-41	-21	+77	+272	-25	-52	+5	+76	+15	--- ^a	--- ^a	-61
Region 4	-32	-90	-74	-66	-37	+3	+8	+63	+26	--- ^a	--- ^a	+23
Region 5	+36	-47	+16	+15	--- ^a	-50	-30	+20	-86	-56	--- ^a	-63

^aPercentage change could not be calculated in certain regions due to no harvest in those regions.

Table 1.38. Distribution of hunting effort and harvest among resident Illinois hunters in 2015, from the 2015-2016 Illinois Hunter Harvest Survey.

	Days Hunting		Animals Harvested	
	Range	Percent of Hunters	Range	Percent of Hunters
RABBIT	---	---	0	25.0%
	1-5	78.3%	1-5	50.8
	6-10	12.5	6-10	14.2
	11-14	3.4	11-14	3.3
	15-19	0.8	15-19	1.7
	20-24	0	20-24	0.8
	25+	5.0	25+	4.2
NON-WILD QUAIL	---	---	0	29.2
	1-5	83.3	1-5	29.1
	6-10	16.7	6-10	25.0
	11-14	0	11-14	4.2
	15-19	0	15-19	0
	20-24	0	20-24	8.3
	25+	0	25+	4.2
WILD QUAIL	---	---	0	41.0
	1-5	69.2	1-5	38.5
	6-10	18.0	6-10	7.7
	11-14	0	11-14	5.1
	15-19	2.5	15-19	2.6
	20-24	5.2	20-24	5.1
	25+	5.1	25+	0
NON-WILD PHEASANT	---	---	0	11.2
	1-5	87.9	1-5	58.0
	6-10	8.4	6-10	16.8
	11-14	0	11-14	2.8
	15-19	0.9	15-19	2.8
	20-24	2.8	20-24	2.8
	25+	0	25+	5.6
WILD PHEASANT	---	---	0	47.9
	1-5	85.9	1-5	42.2
	6-10	12.7	6-10	7.1
	11-14	0	11-14	0
	15-19	1.4	15-19	2.8
	20-24	0	20-24	0
	25+	0	25+	0
DOVE	---	---	0	10.7
	1-5	83.7	1-5	18.5
	6-10	10.1	6-10	19.1
	11-14	0	11-14	8.4
	15-19	3.4	15-19	10.2
	20-24	2.2	20-24	5.6
	25+	0.6	25+	27.5

Table 1.38 - continued.

	Days Hunting		Animals Harvested	
	Range	Percent of Hunters	Range	Percent of Hunters
WOODCOCK	---	---	0	33.3
	1-5	0	1-5	66.7
	6-10	0	6-10	0
	11-14	33.3	11-14	0
	15-19	66.7	15-19	0
	20-24	0	20-24	0
	25+	0	25+	0
CROW	---	---	0	33.3
	1-5	100	1-5	33.4
	6-10	0	6-10	33.3
	11-14	0	11-14	0
	15-19	0	15-19	0
	20-24	0	20-24	0
	25+	0	25+	0
GROUNDHOG	---	---	0	16.7
	1-5	75.0	1-5	66.6
	6-10	8.3	6-10	16.7
	11-14	0	11-14	0
	15-19	8.4	15-19	0
	20-24	8.3	20-24	0
	25+	0	25+	0
GRAY SQUIRREL	---	---	0	14.3
	1-5	60.4	1-5	44.1
	6-10	22.7	6-10	14.3
	11-14	2.6	11-14	5.8
	15-19	3.9	15-19	5.8
	20-24	5.9	20-24	7.2
	25+	4.5	25+	8.4
FOX SQUIRREL	---	---	0	14.5
	1-5	65.7	1-5	54.2
	6-10	20.4	6-10	18.0
	11-14	1.9	11-14	4.3
	15-19	3.0	15-19	2.4
	20-24	4.2	20-24	3.0
	25+	4.8	25+	3.6
TURKEY-SPRING	---	---	0	53.5
	1-5	82.5	1-5	46.5
	6-10	13.4	6-10	0
	11-14	1.8	11-14	0
	15-19	0.5	15-19	0
	20-24	1.3	20-24	0
	25+	0.5	25+	0
TURKEY-FALL SHOTGUN	---	---	0	71.4
	1-5	95.2	1-5	28.6
	6-10	4.8	6-10	0
	11-14	0	11-14	0
	15-19	0	15-19	0
	20-24	0	20-24	0
	25+	0	25+	0

Table 1.38 - continued.

	Days Hunting		Animals Harvested	
	Range	Percent of Hunters	Range	Percent of Hunters
TURKEY-FALL ARCHERY	---	---	0	83.6
	1-5	39.7	1-5	16.4
	6-10	11.0	6-10	0
	11-14	5.5	11-14	0
	15-19	5.4	15-19	0
	20-24	13.7	20-24	0
	25+	24.7	25+	0
DEER REGULAR FIREARM SEASON			0	51.9
	1-5	66.2	1-5	48.1
	6-10	33.8	6-10	0
	11-14	0	11-14	0
	15-19	0	15-19	0
	20-24	0	20-24	0
	25+	0	25+	0
DEER- MUZZLELOADER- ONLY SEASON	---	---	0	78.0
	1-5	93.6	1-5	22.0
	6-10	6.4	6-10	0
	11-14	0	11-14	0
	15-19	0	15-19	0
	20-24	0	20-24	0
	25+	0	25+	0
DEER-ARCHERY SEASON	---	---	0	60.9
	1-5	21.5	1-5	38.9
	6-10	21.5	6-10	0.2
	11-14	4.1	11-14	0
	15-19	10.9	15-19	0
	20-24	12.8	20-24	0
	25+	29.2	25+	0
DEER-LATE WINTER ANTERLESS SEASON	---	---	0	79.3
	1-5	95.5	1-5	20.7
	6-10	4.5	6-10	0
	11-14	0	11-14	0
	15-19	0	15-19	0
	20-24	0	20-24	0
	25+	0	25+	0
DEER-SPECIAL CWD SEASON	---	---	0	93.9
	1-5	100	1-5	6.1
	6-10	0	6-10	0
	11-14	0	11-14	0
	15-19	0	15-19	0
	20-24	0	20-24	0
	25+	0	25+	0

Table 1.38 - continued.

	Days Hunting		Animals Harvested	
	Range	Percent of Hunters	Range	Percent of Hunters
RACCOON	---	---	0	10.3
	1-5	56.4	1-5	41.0
	6-10	25.7	6-10	23.1
	11-14	0	11-14	2.5
	15-19	5.1	15-19	7.7
	20-24	2.5	20-24	2.6
	25+	10.3	25+	12.8
RED FOX	---	---	0	33.3
	1-5	66.7	1-5	66.7
	6-10	33.3	6-10	0
	11-14	0	11-14	0
	15-19	0	15-19	0
	20-24	0	20-24	0
	25+	0	25+	0
GRAY FOX	---	---	0	100.0
	1-5	100	1-5	0
	6-10	0	6-10	0
	11-14	0	11-14	0
	15-19	0	15-19	0
	20-24	0	20-24	0
	25+	0	25+	0
COYOTE	---	---	0	45.7
	1-5	62.1	1-5	44.3
	6-10	16.5	6-10	6.4
	11-14	2.8	11-14	0.7
	15-19	6.5	15-19	2.9
	20-24	2.8	20-24	0
	25+	9.3	25+	0
OPOSSUM	---	---	0	0
	1-5	98.8	1-5	100.0
	6-10	0.8	6-10	0
	11-14	0	11-14	0
	15-19	0.4	15-19	0
	20-24	0	20-24	0
	25+	0	25+	0

Table 1.39. Statewide data from resident Illinois hunters, 2005-2015.

Species and Seasons	Estimated Total Hunters	Average Daily Bag	Average Season Bag	Estimated Total Harvest	Average Days Hunting	Estimated Total Days Hunting
RABBIT						
2005	60,431	1.07	5.15	311,011	4.80	290,349
2006	49,350	1.13	5.43	267,782	4.81	237,525
2007	49,054	0.90	4.97	243,874	5.53	271,107
2008	40,077	0.71	3.85	154,216	5.40	216,255
2009	44,312	0.84	4.27	189,254	5.10	226,152
2010	32,225	1.13	4.83	155,552	4.25	137,089
2011	32,863	0.93	4.44	145,773	4.79	157,523
2012	33,093	0.77	3.52	116,353	4.54	150,150
2013	37,066 ^a	0.73	3.84 ^a	142,401 ^a	5.23 ^a	194,029 ^a
2014	34,874	0.79	3.88	135,275	4.92	171,482
2015	23,586	0.87	4.83	113,999	5.58	131,689
WILD QUAIL						
2005	29,983	1.44	8.16	244,521	5.67	170,108
2006	24,918	1.48	7.95	198,207	5.38	133,972
2007	24,614	1.34	7.67	188,710	5.74	141,227
2008	21,962	1.04	6.88	151,170	6.64	145,720
2009	16,948	1.18	7.31	123,933	6.21	105,220
2010	14,110	1.64	7.07	99,812	4.32	60,967
2011 ^b	12,668	0.87	3.68	46,633	4.25	53,793
2012 ^b	11,266	0.90	4.19	47,175	4.66	52,456
2013 ^b	10,779	0.72	4.79	51,628	6.61	71,295
2014 ^b	11,328	0.84	4.78	54,199	5.71	64,639
2015 ^b	7,665	0.52	3.79	29,089	7.28	55,820
WILD PHEASANT						
2005	44,430	0.67	3.31	146,961	4.93	218,888
2006	38,509	0.72	3.08	118,763	4.26	164,067
2007	35,961	0.58	2.86	102,822	4.95	177,887
2008	29,016	0.73	3.56	103,399	4.86	140,911
2009	22,244	0.64	2.89	64,262	4.48	99,747
2010	24,213	0.70	2.66	64,451	3.83	92,670
2011 ^b	12,301	0.57	2.24	27,539	3.93	48,285
2012 ^b	17,427	0.48	1.69	29,396	3.49	90,905
2013 ^b	14,940	0.33	1.38	20,613	4.22	62,974
2014 ^b	15,549	0.60	2.66	41,316	4.40	68,415
2015 ^b	13,955	0.55	1.77	24,765	3.24	45,207
DOVE						
2005	63,383	4.89	23.35	1,479,709	4.78	302,777
2006	60,514	5.81	24.07	1,456,542	4.14	250,631
2007	51,847	5.38	21.62	1,120,739	4.02	208,437
2008	43,123	4.98	23.14	997,917	4.64	200,225
2009	40,781	4.61	21.41	873,182	4.64	189,254
2010	37,974	4.21	17.61	668,547	4.18	158,688
2011	29,742	4.57	16.57	492,765	3.62	107,769
2012	34,501	3.85	15.97	550,962	4.15	143,109
2013	40,281	4.62	19.94	803,159	4.31	173,794
2014	41,316	4.61	18.05	745,902	3.91	161,708
2015	35,183	5.38	21.27	744,140	3.96	138,371

Table 1.39 - continued.

Species and Seasons	Estimated Total Hunters	Average Daily Bag	Average Season Bag	Estimated Total Harvest	Average Days Hunting	Estimated Total Days Hunting
WOODCOCK						
2005	621	0.83	1.25	777	1.50	932
2006	1,133	0.25	0.43	485	1.71	1,942
2007	524	0.60	1.00	524	1.67	873
2008	802	0.18	0.60	481	3.40	2,725
2009	1,059	0.00	0.00	0	4.67	4,943
2010	1,219	0.72	1.14	1,394	1.57	1,916
2011	1,102	0.50	1.67	1,836	3.33	3,672
2012	704	0.40	1.00	704	2.50	1,760
2013	189	0.00	0.00	0	1.00	189
2014	444	0.33	0.50	222	1.50	666
2015	590	0.14	2.00	1,179	14.0	8,255
CROW						
2005	5,748	0.82	4.22	24,235	5.16	29,672
2006	6,310	2.73	8.62	54,365	3.15	19,902
2007	5,237	3.38	8.90	46,610	2.63	13,791
2008	4,489	1.55	9.75	43,764	6.29	28,214
2009	4,414	2.20	12.24	54,022	5.56	24,539
2010	3,135	4.30	13.39	41,980	3.11	9,755
2011	3,121	1.24	3.65	11,383	2.94	9,180
2012	3,168	0.64	2.94	9,329	4.61	14,610
2013	2,458	1.05	4.62	11,347	4.38	10,779
2014	3,998	0.87	2.17	8,663	2.50	9,996
2015	1,179	1.77	3.83	4,521	2.17	2,555
GROUNDHOG						
2005	4,816	0.61	2.90	13,982	4.74	22,836
2006	3,236	0.56	4.30	13,915	7.70	24,918
2007	1,571	0.62	8.11	12,744	13.00	20,425
2008	4,649	0.56	2.69	12,504	4.83	22,443
2009	3,531	0.86	5.65	19,949	6.55	23,127
2010	2,961	0.52	2.00	5,923	3.82	11,322
2011	3,488	0.72	3.32	11,566	4.58	15,973
2012	2,112	0.35	1.42	2,992	4.08	8,625
2013	4,160	0.91	3.73	15,507	4.09	17,020
2014	4,443	0.92	8.95	39,761	9.75	43,315
2015	2,359	0.55	3.50	8,255	6.33	14,938
GRAY SQUIRREL						
2005	48,314	1.44	9.48	457,816	6.58	317,846
2006	48,864	1.52	13.42	655,945	8.80	430,070
2007	43,992	1.40	8.99	395,401	6.44	283,327
2008	42,963	1.09	9.34	401,411	8.60	369,350
2009	46,431	1.38	9.90	459,718	7.17	333,137
2010	38,322	1.36	8.77	336,190	6.45	247,004
2011	35,801	1.31	10.39	372,144	7.95	284,569
2012	38,198	1.09	6.87	262,455	6.30	240,804
2013	38,579	1.22	8.72	336,430	7.17	276,671
2014	41,316	1.20	8.28	342,297	6.88	284,322
2015	30,269	1.26	9.73	294,629	7.72	233,698

Table 1.39 - continued.

Species and Seasons	Estimated Total Hunters	Average Daily Bag	Average Season Bag	Estimated Total Harvest	Average Days Hunting	Estimated Total Days Hunting
FOX SQUIRREL						
2005	57,169	1.12	6.94	396,764	6.22	355,441
2006	55,336	1.05	8.36	462,430	7.96	440,425
2007	50,276	1.15	6.94	348,791	6.01	302,355
2008	45,047	0.79	6.53	294,005	8.27	372,556
2009	46,784	0.90	6.31	295,356	6.97	326,251
2010	39,890	0.98	5.98	238,468	6.10	243,171
2011	36,535	0.95	7.19	262,722	7.58	277,042
2012	41,190	0.76	5.11	210,351	6.75	278,121
2013	41,416	0.82	5.38	222,963	6.56	271,754
2014	45,092	0.85	5.45	245,894	6.39	288,321
2015	32,627	0.80	5.75	187,509	7.17	233,895
TURKEY-SPRING						
2005	55,149	0.12	0.48	26,410	4.09	225,413
2006	87,858	0.14	0.62	54,042	4.49	394,473
2007	52,196	0.12	0.52	27,058	4.30	224,322
2008	54,024	0.10	0.45	24,207	4.53	244,790
2009	54,493	0.11	0.48	25,952	4.17	227,387
2010	51,038	0.12	0.51	25,955	4.26	217,217
2011	44,430	0.12	0.49	21,664	4.14	183,960
2012	44,183	0.14	0.46	20,243	3.30	145,926
2013	49,358	0.11	0.43	21,181	3.94	194,596
2014	42,204	0.10	0.43	17,992	4.39	185,254
2015	42,651	0.14	0.58	24,569	4.23	180,433
TURKEY-FALL SHOTGUN						
2005	10,719	0.15	0.41	4,350	2.67	28,584
2006	16,180	0.17	0.45	7,281	2.59	41,907
2007	10,649	0.08	0.21	2,269	2.82	30,026
2008	9,779	0.07	0.21	2,084	2.85	27,894
2009	9,533	0.08	0.30	2,825	3.70	35,309
2010	8,710	0.09	0.26	2,264	2.94	25,606
2011	7,895	0.10	0.30	2,387	2.98	23,500
2012	6,689	0.13	0.32	2,122	2.39	16,018
2013	6,619	0.17	0.49	3,215	2.80	18,533
2014	3,776	0.07	0.24	889	3.41	12,883
2015	4,128	0.11	0.33	1,376	2.90	11,990
TURKEY-FALL ARCHERY						
2005	13,049	0.01	0.11	1,398	15.31	199,780
2006	25,403	0.01	0.12	3,074	16.82	427,157
2007	19,028	0.01	0.16	2,968	17.01	323,653
2008	16,191	0.01	0.09	1,443	16.36	264,829
2009	18,007	0.01	0.14	2,472	13.79	248,396
2010	17,768	0.01	0.15	2,613	15.21	270,171
2011	15,789	0.01	0.10	1,652	15.13	238,855
2012	11,618	0.01	0.18	2,112	14.73	171,097
2013	18,344	0.01	0.18	3,215	15.78	289,530
2014	13,550	0.00	0.07	889	17.64	239,008
2015	14,348	0.01	0.22	3,145	16.40	235,271

Table 1.39 - continued.

Species and Seasons	Estimated Total Hunters	Average Daily Bag	Average Season Bag	Estimated Total Harvest	Average Days Hunting	Estimated Total Days Hunting
DEER-REGULAR FIREARM SEASON						
2005	179,895	0.19	0.80	144,476	4.24	762,924
2006	163,905	0.20	0.85	139,473	4.18	684,584
2007	180,156	0.18	0.77	139,132	4.31	776,662
2008	181,789	0.16	0.71	129,689	4.40	799,616
2009	190,490	0.16	0.72	136,821	4.39	835,755
2010	186,385	0.16	0.67	124,895	4.24	790,829
2011	176,800	0.14	0.63	111,808	4.46	789,175
2012	159,128	0.15	0.67	105,968	4.42	702,696
2013	163,771	0.11	0.49	80,373	4.45	729,216
2014	158,821	0.12	0.53	83,520	4.26	675,932
2015	144,661	0.14	0.60	86,875	4.28	618,741
DEER-MUZZLELOADER-ONLY SEASON						
2005	28,188	0.15	0.38	10,719	2.54	71,461
2006	33,331	0.16	0.38	12,782	2.36	78,798
2007	28,804	0.18	0.42	12,045	2.38	68,606
2008	34,306	0.12	0.32	10,901	2.68	91,856
2009	39,546	0.12	0.33	13,241	2.73	107,868
2010	34,664	0.11	0.30	10,277	2.59	89,709
2011	37,269	0.12	0.31	11,383	2.65	98,773
2012	24,644	0.09	0.28	6,865	3.22	79,388
2013	29,123	0.11	0.27	7,943	2.57	74,888
2014	28,432	0.08	0.23	6,442	2.83	80,410
2015	27,714	0.09	0.23	6,489	2.75	76,262
DEER-ARCHERY SEASON						
2005	92,899	0.03	0.63	58,722	18.68	1,734,949
2006	109,378	0.04	0.81	88,506	22.31	2,440,621
2007	106,139	0.03	0.62	65,289	20.25	2,149,480
2008	104,040	0.03	0.67	69,253	19.11	1,988,460
2009	105,396	0.03	0.60	63,026	18.92	1,994,053
2010	108,870	0.03	0.55	59,922	18.86	2,053,021
2011	107,769	0.03	0.59	63,340	17.86	1,924,973
2012	82,028	0.03	0.56	46,295	19.05	1,562,760
2013	104,390	0.03	0.45	46,711	17.40	1,816,799
2014	95,737	0.03	0.50	47,757	17.88	1,712,153
2015	96,899	0.03	0.58	56,410	18.80	1,822,022
DEER-LATE WINTER ANTLERLESS SEASON						
2005	29,206	0.13	0.30	8,700	2.31	67,577
2006	55,983	0.14	0.30	16,827	2.11	118,277
2007	55,513	0.15	0.32	17,632	2.08	115,740
2008	62,680	0.15	0.31	19,237	2.07	129,689
2009	60,201	0.12	0.33	19,773	2.65	159,595
2010	56,961	0.11	0.29	16,548	2.55	145,101
2011	51,773	0.10	0.26	13,586	2.61	135,124
2012	42,422	0.11	0.29	12,146	2.56	108,608
2013	38,768	0.08	0.18	6,997	2.35	90,963
2014	23,323	0.09	0.23	5,331	2.58	60,196
2015	21,817	0.11	0.27	5,897	2.46	53,658

Table 1.39 - continued.

Species and Seasons	Estimated Total Hunters	Average Daily Bag	Average Season Bag	Estimated Total Harvest	Average Days Hunting	Estimated Total Days Hunting
DEER-SPECIAL CWD SEASON						
2005	---	---	---	---	---	---
2006	---	---	---	---	---	---
2007	---	---	---	---	---	---
2008	---	---	---	---	---	---
2009	---	---	---	---	---	---
2010	---	---	---	---	---	---
2011	12,484	0.14	0.32	4,039	2.34	29,191
2012	9,329	0.05	0.11	1,056	2.13	19,891
2013	7,754	0.08	0.15	1,135	1.95	15,129
2014	7,108	0.20	0.53	3,776	2.63	18,659
2015	6,486	0.03	0.06	393	2.03	13,169
RACCOON						
2005	11,807	1.40	19.32	228,054	13.83	163,273
2006	8,252	1.19	12.20	100,641	10.27	84,784
2007	9,078	1.02	13.46	122,199	13.15	119,406
2008	8,657	1.30	15.33	132,735	11.80	102,116
2009	8,298	1.09	12.19	101,159	11.23	93,215
2010	8,884	1.08	10.18	90,405	9.41	83,612
2011	10,098	1.05	10.80	109,054	10.29	103,914
2012	10,210	0.91	8.62	88,013	9.48	96,814
2013	9,077	1.12	15.50	140,699	13.85	125,759
2014	7,552	1.17	11.24	84,852	9.62	72,635
2015	7,665	1.05	10.62	81,372	10.15	77,834
RED FOX						
2005	2,175	0.07	0.50	1,087	7.14	15,535
2006	1,780	0.19	0.91	1,618	4.82	8,576
2007	2,095	0.08	0.58	1,222	7.42	15,537
2008	1,443	0.04	0.56	802	13.44	19,397
2009	2,295	0.05	0.31	706	6.00	13,770
2010	1,394	0.04	0.13	174	3.38	4,703
2011	918	0.03	0.20	184	6.80	6,242
2012	528	0.29	0.67	352	2.33	1,232
2013	1,324	0.09	1.29	1,702	14.57	19,289
2014	1,555	0.20	0.86	1,333	4.29	6,664
2015	1,179	0.28	1.33	1,572	4.83	5,700
GRAY FOX						
2005	1,087	0.00	0.00	0	10.57	11,496
2006	647	0.38	2.00	1,294	5.25	3,398
2007	349	0.00	0.00	0	15.00	5,237
2008	641	0.02	0.25	160	13.50	8,657
2009	1,412	0.00	0.00	0	6.13	8,651
2010	1,045	0.04	0.17	174	4.00	4,181
2011	918	0.03	0.20	184	6.80	6,242
2012	176	0.00	0.00	0	1.00	176
2013	1,135	0.15	3.00	3,404	20.17	22,883
2014	889	0.04	0.25	222	6.50	5,775
2015	393	0.00	0.00	0	3.50	1,376

Table 1.39 - continued.

Species and Seasons	Estimated Total Hunters	Average Daily Bag	Average Season Bag	Estimated Total Harvest	Average Days Hunting	Estimated Total Days Hunting
COYOTE						
2005	31,070	0.47	4.07	126,610	8.73	271,086
2006	35,273	0.24	1.71	60,190	7.21	254,191
2007	34,216	0.26	3.02	103,345	11.41	390,513
2008	31,741	0.19	2.45	77,749	13.04	413,755
2009	31,072	0.27	1.95	60,731	7.17	222,797
2010	31,354	0.27	2.36	74,031	8.91	279,229
2011	31,027	0.23	2.20	68,113	9.44	292,831
2012	30,805	0.23	1.91	58,969	8.34	256,998
2013	31,582	0.37	3.35	105,903	9.14	288,774
2014	28,876	0.31	2.89	83,520	9.36	270,328
2015	27,517	0.25	1.98	54,444	7.88	216,795
OPOSSUM						
2005	2,952	0.43	6.16	18,176	14.26	42,100
2006	1,618	0.48	7.10	11,488	14.80	23,947
2007	1,920	0.76	4.82	9,252	6.36	12,220
2008	2,084	0.75	4.31	8,977	5.77	12,023
2009	2,648	0.99	5.27	13,947	5.33	14,123
2010	2,090	1.48	5.42	11,322	3.67	7,664
2011	2,937	0.59	4.31	12,668	7.31	21,480
2012	2,816	0.45	3.38	9,505	7.44	20,947
2013	1,702	0.82	8.11	13,805	9.89	16,831
2014	1,999	0.71	5.67	11,328	8.00	15,993
2015	786	0.56	2.25	1,769	4.00	3,145

^a 2013-14 figures, other than the standardized average daily bag, are not directly comparable to previous years due to increased season length in 2013-14 season.

^b 2011-2015 figures are not directly comparable to previous years due to changes in harvest reporting on the questionnaire; hunters distinguished between wild and non-wild pheasant, quail, and partridge from 2011-2014.

Table 1.40. Percent change in statewide harvest by species for 1, 5 and 10 year time periods, from the 2015-16 Illinois Hunter Harvest Survey.

Species	2015 Estimated Harvest	% Change 1 Year ^a	% Change 5 Years ^a	% Change 10 Years ^a
Rabbit	113,999	-16	-27	-63
Wild Quail	29,089	-46	-71	-88
Wild Pheasant	24,765	-40	-62	-83
Dove	744,140	0	11	-50
Woodcock	1,179	431	-15	52
Crow	4,521	-48	-89	-81
Groundhog	8,255	-79	39	-41
Fox Squirrel	187,509	-24	-21	-53
Gray Squirrel	294,629	-14	-12	-36
Turkey-Spring	24,569	37	-5	-7
Turkey-Fall Shotgun	1,376	55	-39	-68
Turkey-Fall Archery	3,145	254	20	125
Deer-Regular Firearm	86,875	4	-30	-40
Deer-Muzzleloader	6,486	1	-37	-39
Deer-Archery	56,410	18	-6	-4
Deer-Late winter antlerless	5,897	11	-64	-32
Deer- Special CWD Season	393	-90	---	---
Raccoon	81,372	-4	-10	-64
Red Fox	1,572	18	804	45
Gray Fox	0	-100	-100	---
Coyote	54,444	-35	-26	-57
Opossum	1,769	-84	-84	-90

^a From 2015-16, 2010-11, and 2005-06, respectively; see also Table 47.

Section 2 – Hunter Attitudes and Reported Behaviors

A majority of the 2,013 Illinois license purchasers sampled (88.6%) indicated they hunted at least one day in Illinois during the 2015-16 season. Deer (79.5%), turkey (28.4%), and squirrel (26.8%) were the most popular species respondents indicated they intended to hunt during 2015-16 (Table 2.1). Eighteen percent of those who intended to hunt deer relied exclusively on public land. Reliance on public lands was highest among waterfowl hunters and lowest among furbearer hunters (Table 2.1)

Hunting Information and Harvest Reporting

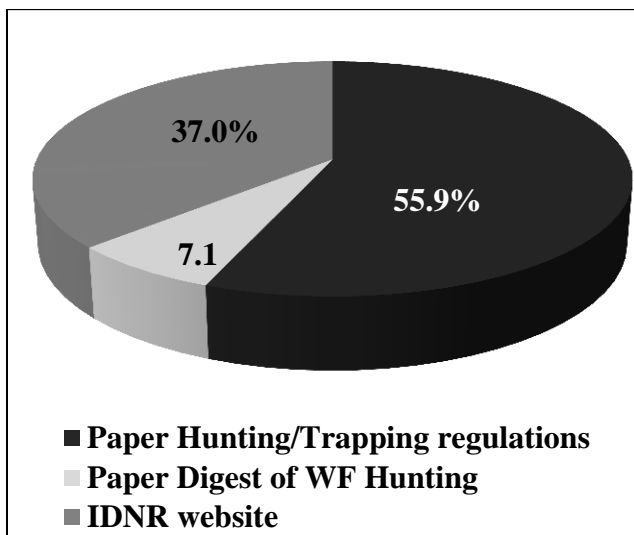


Figure 2.1. How hunters obtain information about hunting regulations in Illinois (n=1,269).

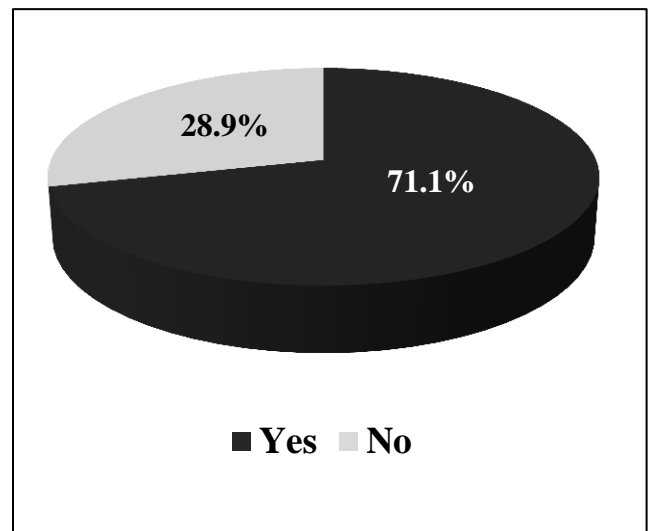


Figure 2.2. Percentage of hunters who obtain information from the IDNR website and save a PDF of the digest (n=380).

*Restricted to those who primarily use IDNR website.

A majority of respondents (55.9%) obtained information about hunting regulations using a paper copy of the Illinois Digest of Hunting/Trapping Regulations (Figure 2.1). Of those who obtained information from the IDNR website, 71.1% saved a PDF copy of the Digest (Figure 2.2). Hunters who used a paper copy of the digest obtained them from a chain retail store (66.1%), independent retail stores (34.2%), IDNR offices (4.3%), or 'other' locations (2.0%) (Figure 2.3). Other locations included Illinois state fair, courthouses, and city halls. Roughly three fourths of hunters that obtained either digest only got one per year (Figure 2.4). Respondents using paper copies of the Digests were asked if they thought the Waterfowl and Hunting/Trapping Digests should be combined, just over half (51.4%) agreed that they should be combined (Figure 2.5).

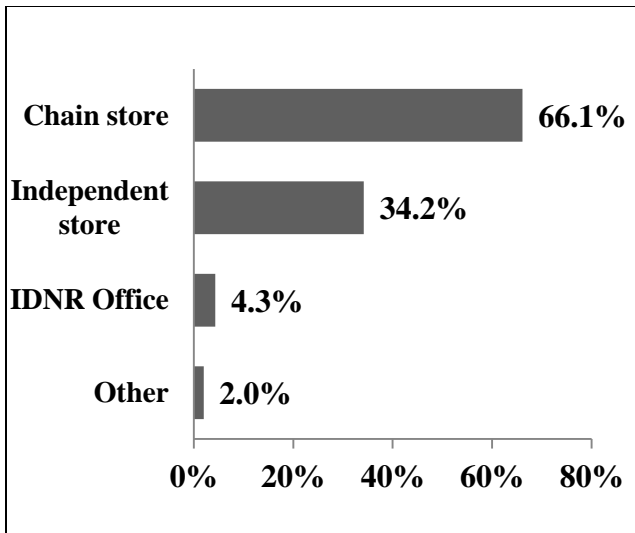


Figure 2.3. Where hunters normally obtain their paper copies (n=851) of digests. *Percentage may be greater than 100 because respondents were allowed to select all options that apply.
*Restricted to those who primarily use paper versions.

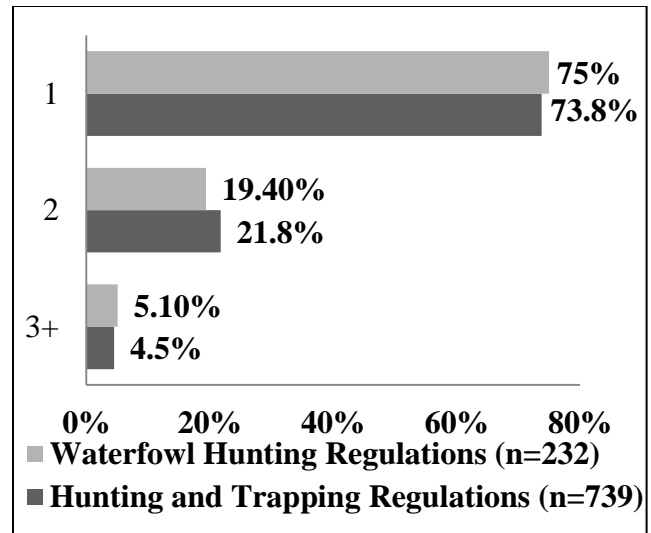


Figure 2.4. The number of Waterfowl Hunting Regulations and the Hunting/Trapping Regulations paper copies taken by hunters per year.
*Restricted to those who primarily use paper versions.

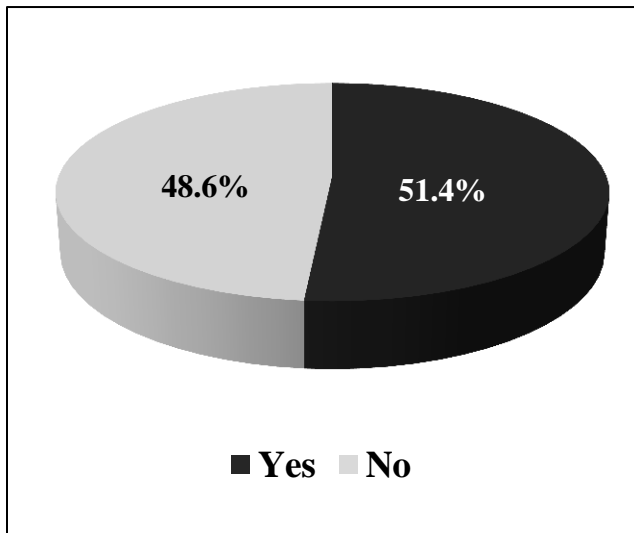


Figure 2.5. Percentage of hunters who prefer IDNR combine the Digest of Waterfowl Hunting Regulations with the Digest of Hunting and Trapping Regulations (n=763).
*Restricted to those who primarily use paper versions.

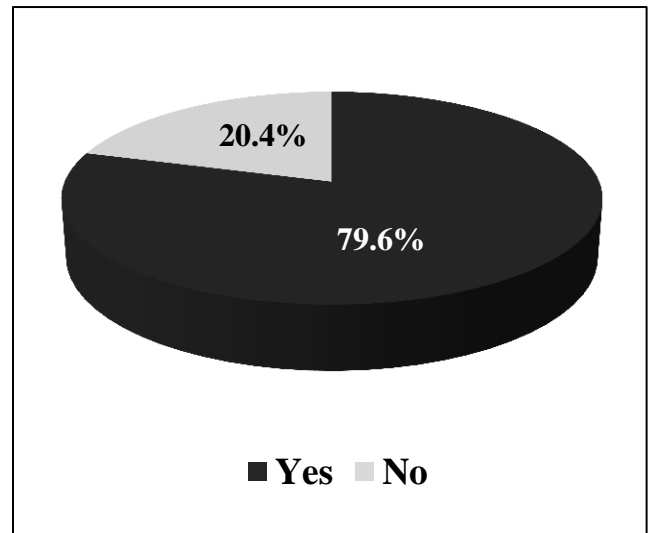


Figure 2.6. Percentage of hunters who use the legal shooting times reference card in the digest (n=789).
*Restricted to those who primarily use paper versions

A majority (79.6%) of hunters who use paper copies of the digests reported using the legal shooting time reference cards attached inside the digest (Figure 2.6). Less than 15% of respondents use social media to stay up to date with IDNR news (Figure 2.7).

Over half of Illinois hunters (55.0%) used the new sunrise/sunset table found in the 2015-16 IL Digest of Hunting and Trapping Regulations, roughly 12% used the old version of the table, and almost 33% of hunters reported never using the table (Figure 2.8). Nearly three fourths of sunrise/sunset table users had no preference (Figure 2.9) in which version of the tables should be used. Of the hunters who had preferences, results are similar for both versions. Almost half of both groups indicated in their preferred version it was “easier for me to find times,” 40% felt their versions were easier to understand, and just over one quarter felt that their versions are more accurate (Figure 2.10).

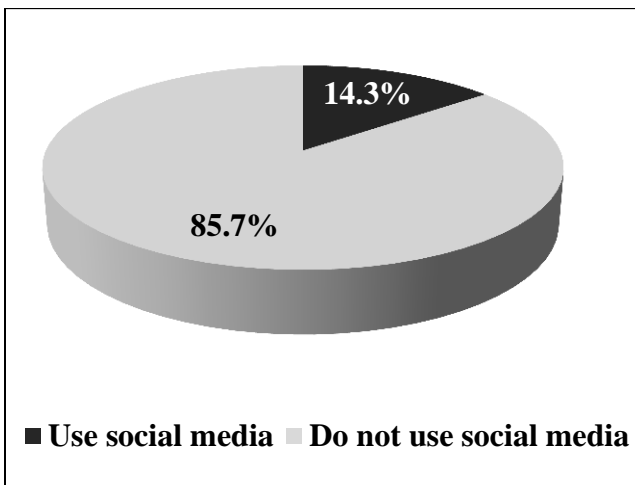


Figure 2.7. Percentage of respondents that use social media (Facebook, twitter, etc.) to stay up to date with IDNR news (n=1291).

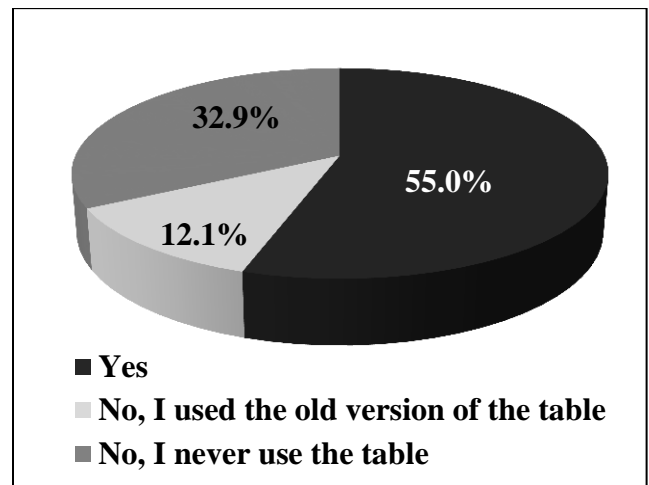


Figure 2.8. Hunters' use of the new sunrise/sunset table found in the 2015-16 IL Digest of Hunting and Trapping Regulations (n=1,129).

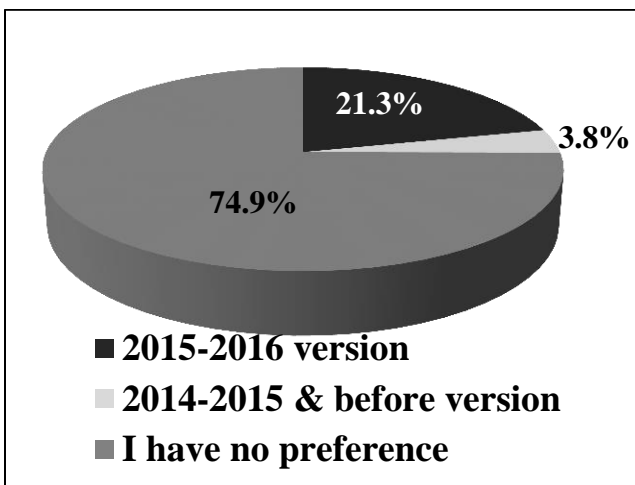


Figure 2.9. Hunters' preferred version of the sunrise/sunset table (n=1,064).

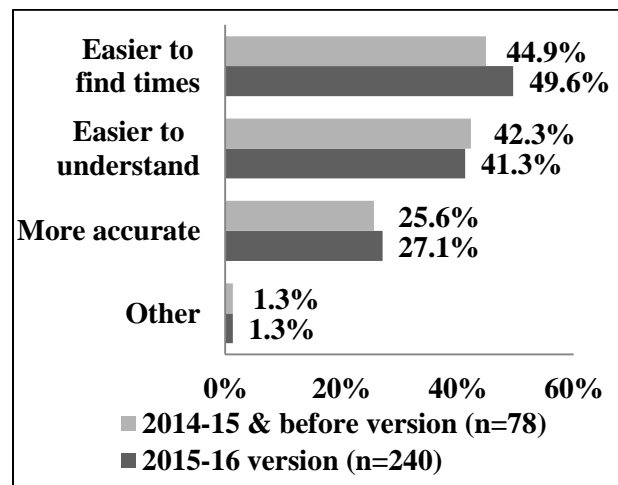


Figure 2.10. Sunrise/sunset table qualities hunters prefer by version.

When hunters were asked which type of land they hunted most often, private lands were the most popular. Almost half hunted private land owned by someone else most often and 23.2% hunted their own private property (Figure 2.11). Although most hunting occurred on private lands, 28.9% of those who spent at least 1 day afield, hunted public land in Illinois during the 2015-16 hunting seasons (Figure 2.12). Of the hunters who accessed public land during the 2015-16 season, 27.5% reported using the free online reporting for free site permit “Windshield card”, 30.0% used online or phone for deer and turkey, 26.9% used check stations, and 22.0% used the drop box harvest reporting procedure (Figure 2.13). A majority of respondents (84.0%) were satisfied with the harvest reporting procedures ($n=307$, $\chi = 3.93$, $\sigma = 0.821$).

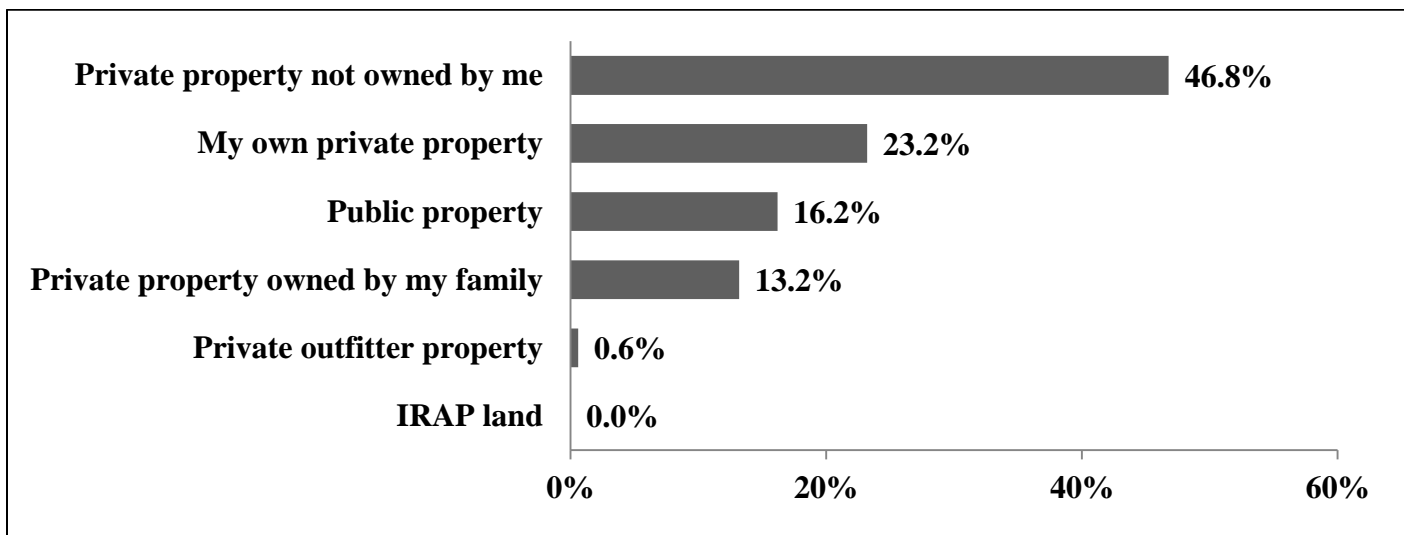


Figure 2.11. Types of property Illinois hunters* hunted most often (n=1,302).

*Restricted to those that hunted one day or more in Illinois 2015-16.

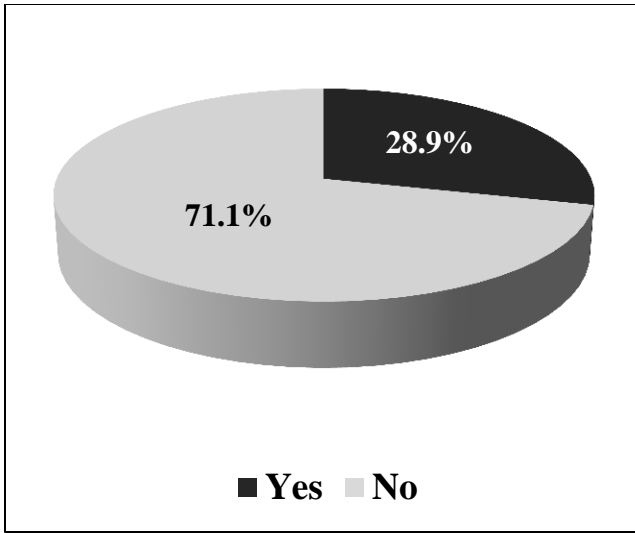


Figure 2.12. Percent of hunters who indicated they hunted public land in Illinois during the 2015-16 seasons (n=1,131).

*Restricted to those that hunted one day or more in Illinois 2015-16.

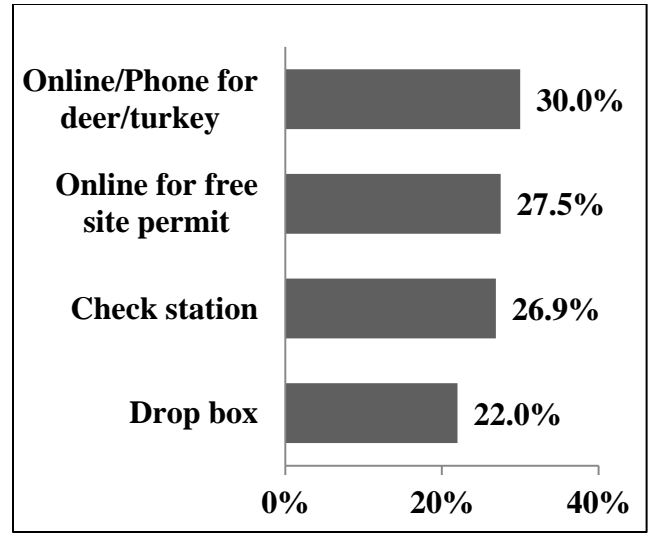


Figure 2.13. Harvest reporting procedures used by public land hunters during the 2015-16 hunting seasons, which (n=327).

*Restricted to those that hunted one day or more & indicated They hunted public land in Illinois during 2015-16.

Those who hunted public lands also gave their attitudes toward trust in IDNR by stating their level of agreement with a variety of statements (Table 2.2). Public land hunters had the greatest level of agreement (69.5%) with the statement “I trust IDNR to make the right decisions about hunting seasons.” Greatest disagreement (24.9%) was with the statement “I trust that IDNR knows what is best for Illinois hunters.” Twenty-seven percent of hunters were unsure if “IDNR shares my views about land management.”

Youth Turkey Season Preferences

Greater than 1 in 8 (13.6%) respondents had previously accompanied or hunted with a youth hunter during the Illinois Youth Turkey Season (Figure 2.14). Support for combining North and South zone Youth Turkey hunts into two weekends was high: two-thirds (67.7%) of participants were moderately to extremely supportive of the combination, whereas 11.4% were not supportive at all (Figure 2.15).

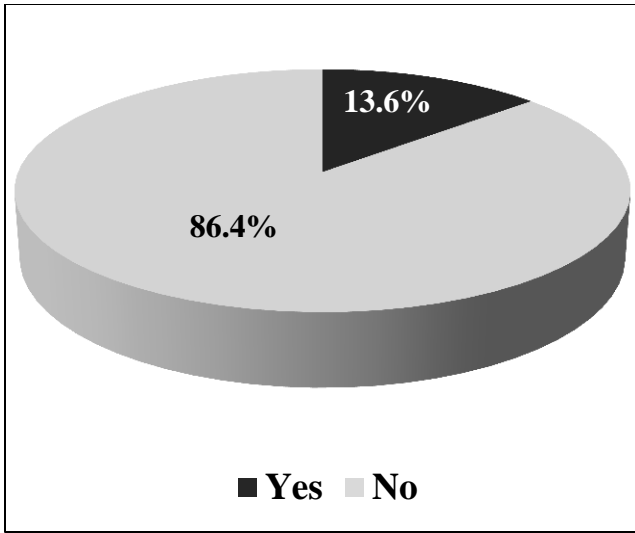


Figure 2.14. Percentage of hunters who have ever hunted with/accompanied a youth hunter during Illinois Youth Turkey Season ($n=1118$).

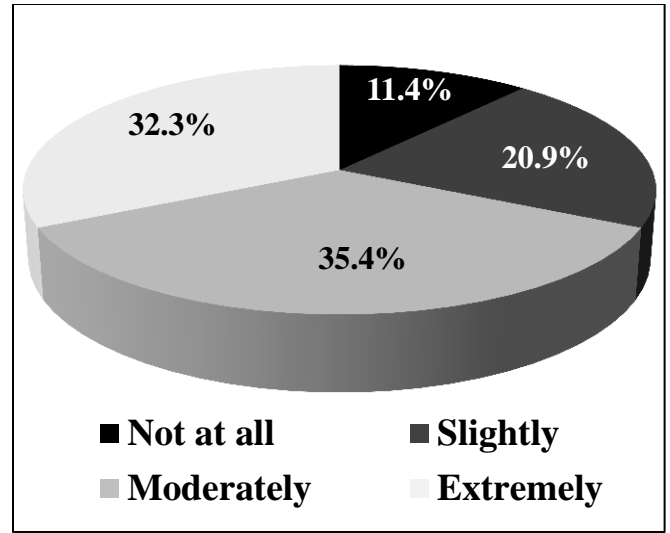


Figure 2.15. Level of support for combining north and south zone youth turkey hunts into two weekends for turkey season ($n=158$).
 *Restricted to those that have ever hunted with/accompanied a youth hunter during Illinois Youth Turkey Season.
 **Reduced from a 7 point unipolar scale.

Deer bag limits in Illinois

Among those who spent ≥ 1 day hunting for any game species in Illinois during 2015-16, 82.0% self-identified as a deer hunter (Figure 2.16). Ninety percent of those who self-identified as deer hunters reported 1 day or more hunting for deer (Figure 2.17) in one of the 2015-16 Illinois deer hunting seasons. Of those who had not hunted during 2015-16 and provided the last year they hunted, 48% had hunted for deer within the last 5 years. A majority (52.6%) of self-identified deer hunters indicated they hunted for deer (Figure 2.18) using both firearm and bow. Almost 50% of hunters indicated that they harvested a single deer each year (Figure 2.19). Current annual buck limit in Illinois is 2 across all seasons, and if that regulation remained unchanged a majority of deer hunters (regardless of hunting method) agreed with an annual bag limit during archery season (Figure 2.20).

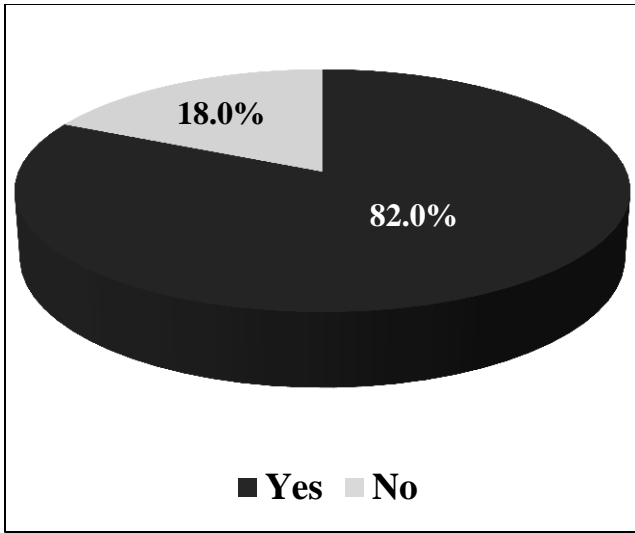


Figure 2.16. Percentage of hunters who self-identified as a deer hunter ($n=1158$).

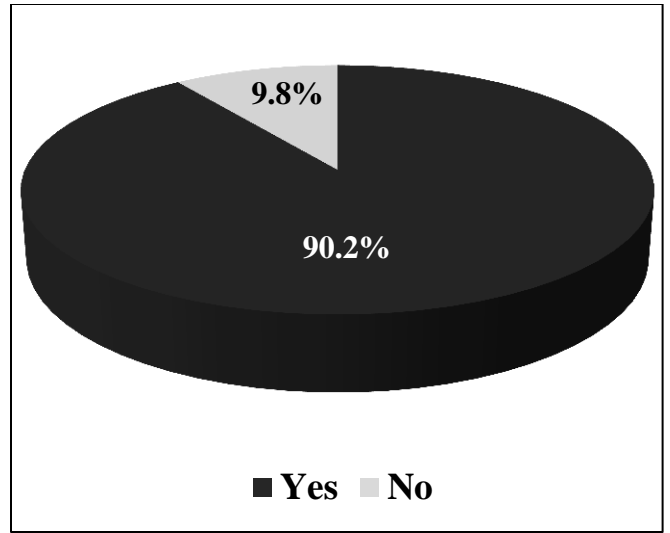


Figure 2.17. Percentage of self-identified deer hunters who spent at least 1 day afield deer hunting ($n=949$).

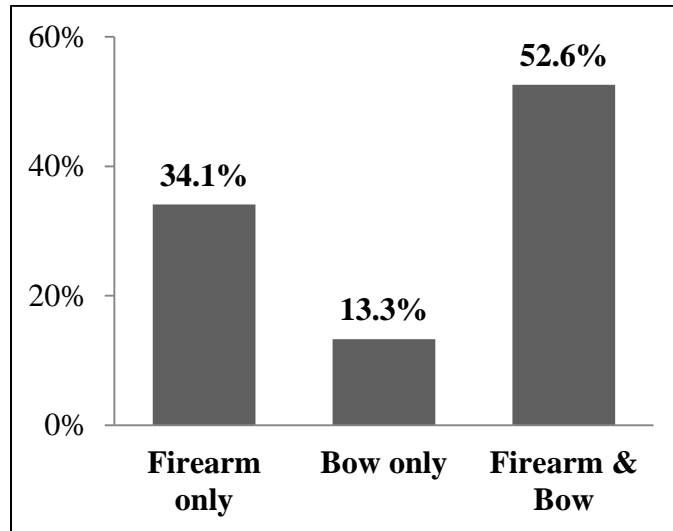


Figure 2.18. Percentage of deer hunters that use each method to hunt deer in Illinois ($n=932$).

*Restricted to those who identified as deer hunters.

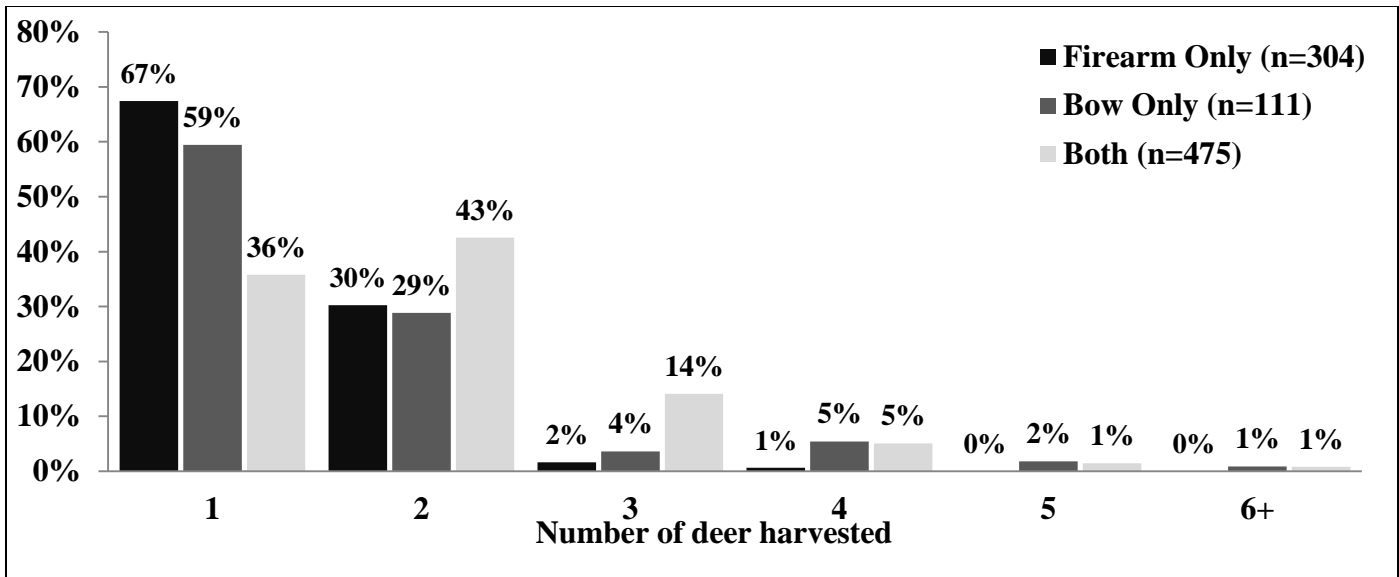


Figure 2.19. Total number of deer that hunters typically harvest each year ($n=897$). *Restricted to those who identified as deer hunters.

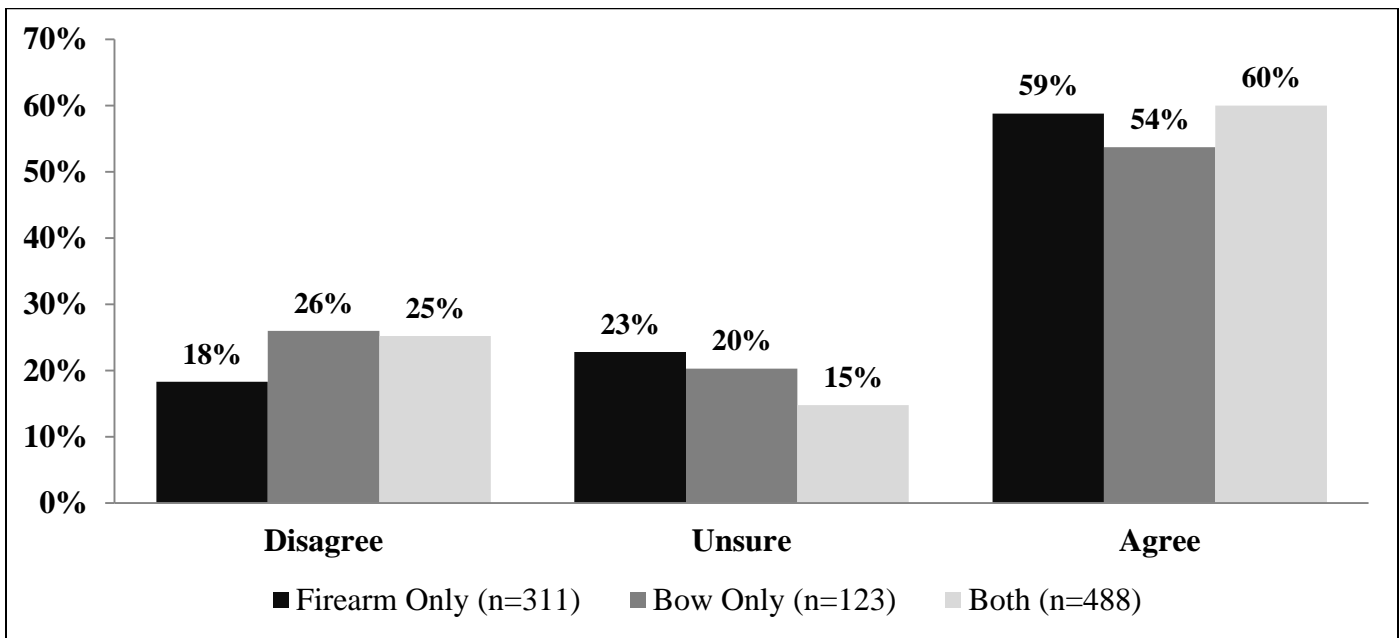


Figure 2.20. Percentage of deer hunters in agreement with a bag limit on total deer harvested during archery season if buck limit stays the same ($n=922$), based on hunting method. *Restricted to those who identified as deer hunters. **Reduced from a 7 point scale.

Preferred mean bag limit significantly differed ($F_{(520)}=14.919$; $p<.001$) between firearm-only users and bow-only hunters. Bow-only hunters preferred an average 3.54 (S.D. 1.59, $n=61$), and firearm-only deer hunters preferred a bag limit of 2.63 (S.D. 1.11, $n=175$). Mean preferred bag limit of those who used both methods ($\bar{x}=3.11$, $n=287$) did not significantly differ from the archery only group ($F_{(520)}=14.919$; $p=0.137$). Deer hunters who were unsure of the creation of a bag limit preferred a mean bag limit of 3.45 deer, whereas 10% of hunters

preferred no limit at all. Preferred mean deer limits did not differ by hunting method ($F_{(124)}=0.991$; $p=0.371$).

Deer hunters who hunted most often by bow-only were more likely to not support a 10-day continuous firearm deer season (Figure 2.21). Those who hunted by firearm only were more likely to be extremely supportive of a 10-day continuous firearm season.

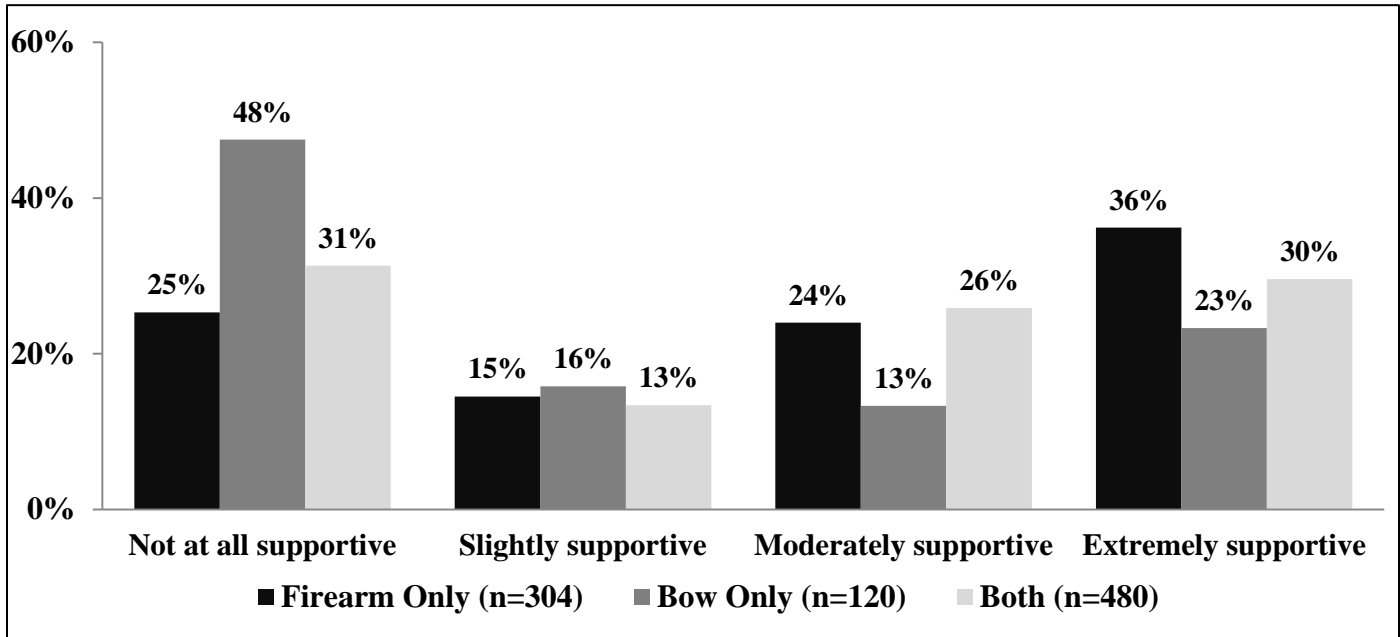


Figure 2.21. Deer hunter level of support for a continuous 10 day firearm season beginning the day after Thanksgiving ($n=904$). *Reduced from a 7 point unipolar scale.

Deer hunters that participated primarily in both seasons were significantly more likely to have harvested multiple deer. Deer hunters that participate in both seasons were responsible for 62.0% of the responses that indicated an average of 2 deer per season, and over 83% of responses that indicated typically harvesting 3 or more deer used both methods (Table 2.3). Those who typically harvest more deer are less likely to agree with a bag limit. Additionally, among those who agreed with a bag limit, deer hunters that typically harvested 3 or more deer a season preferred a higher mean bag (Figure 2.22) than those with 2 or less ($F_{(509)}=17.736$; $p\leq.001$). Those who typically harvested 3 or more deer a season desired an average bag of 3.82. Those who harvested an average of 2 deer per season preferred a mean 3.01 bag, and those who harvested one deer annually preferred a mean 2.78 deer bag limit. Deer hunters who typically harvested 3 or more deer a season were more likely to oppose a 10 day continuous season, and those who harvested a deer annually were “more supportive” to “extremely supportive” of a 10-day continuous season (Figure 2.23).

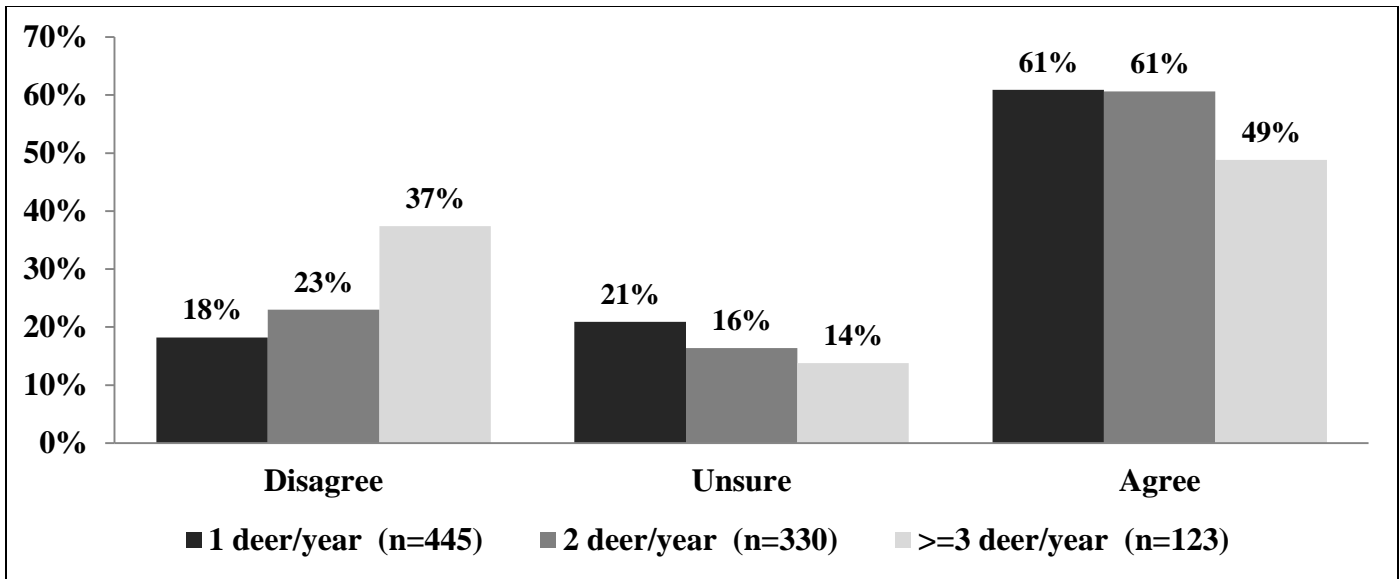


Figure 2.22. Percentage of deer hunters in agreement with a bag limit on total deer harvested during archery season if buck limit stays the same by typical number of deer harvested ($n=898$). *Reduced from a 7 point scale.

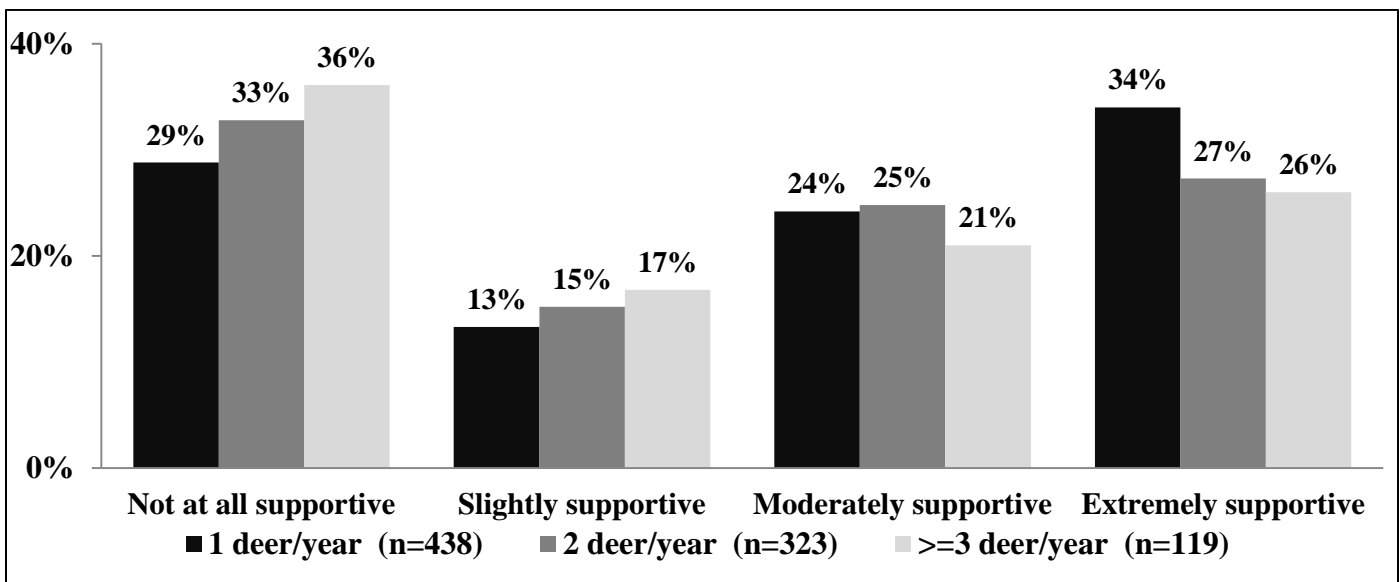


Figure 2.23. Deer hunter level of support for a continuous 10-day firearm season beginning the day after Thanksgiving ($n=880$). *Reduced from a 7 point unipolar scale.

Hunter Attitudes Regarding Epizootic Hemorrhagic Disease and Bluetongue Virus

Approximately 10.4% of deer hunters reported they observed dead deer between July and October 2015 (Figure 2.24). These hunters reported an average of 3.73 (± 5.3) dead deer, and 28.3% of them saw ≥ 4 deer (Table 2.4). A small proportion (9.1%) of hunters who observed dead deer reported them to IDNR (Figure 2.25), and those hunters reported an average of 4.56 (± 6.00) deer (Table 2.5). Counties in which most dead deer were observed included Pike, Adams, Hancock, & Peoria Counties (Table 2.6).

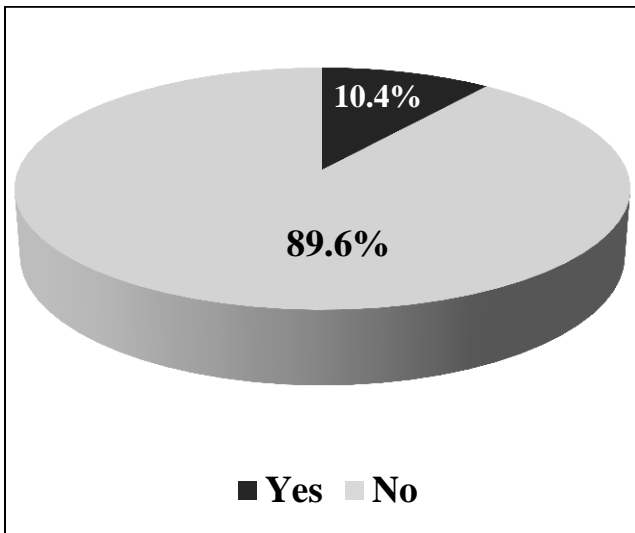


Figure 2.24. Percentage of hunters who reported observing dead deer from July through October 2015 ($n=1,089$).

*Cases selected for those who hunted 1 day or more in Illinois during 2015-16.

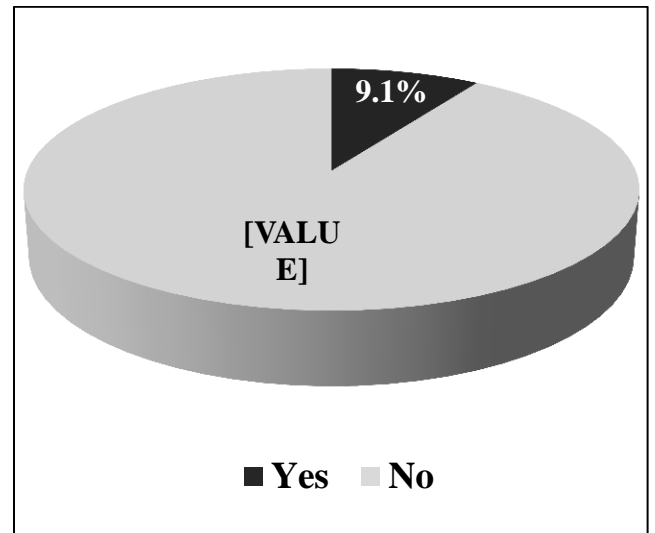


Figure 2.25. Percentage of hunters* that reported dead deer they observed to the IDNR ($n=110$).

*Cases selected for those who observed dead deer.

Forty-two percent of deer hunters believed that EHD & BTV had decreased the number of deer in the areas they hunted, 49.7 saw no change, and 8.5% indicated deer populations increased (Table 2.7).

Approximately 51.5% of Illinois deer hunters believed that the statewide population of deer had decreased, 34.3% believed there was no change, and 14.2% indicated the statewide deer population increased (Table 2.8).

More than 13% of Illinois deer hunters reported that they saw more deer during the 2015-16 deer seasons than the 5 years prior, whereas 66.9% of deer hunters reported seeing fewer deer and 54.6% reported harvesting fewer deer (Table 2.9 and Table 2.10).

Attitudes toward Wildlife and Hunting

Those who had hunted at least 1 day or more during the 2015-16 season were much more likely to purchase a license every year than those who did not hunt (Figure 2.26). When asked about their favorite species to hunt most respondents indicated deer (Table 2.11). Among those who hunted in 2015-16 duck (7.9%) and turkey (6.7%) were the second and third most popular species to hunt. Among those who did not hunt in 2015-16 pheasant (13.5%) and squirrel (10.1%) rounded out the top 3 favorite species to hunt. When asked how

many of their favorite species they generally harvest, 31.7% reported they harvested the same as other hunters they knew; slightly more than half (51.6%) harvested fewer and 16.6% harvested more (Table 2.12).

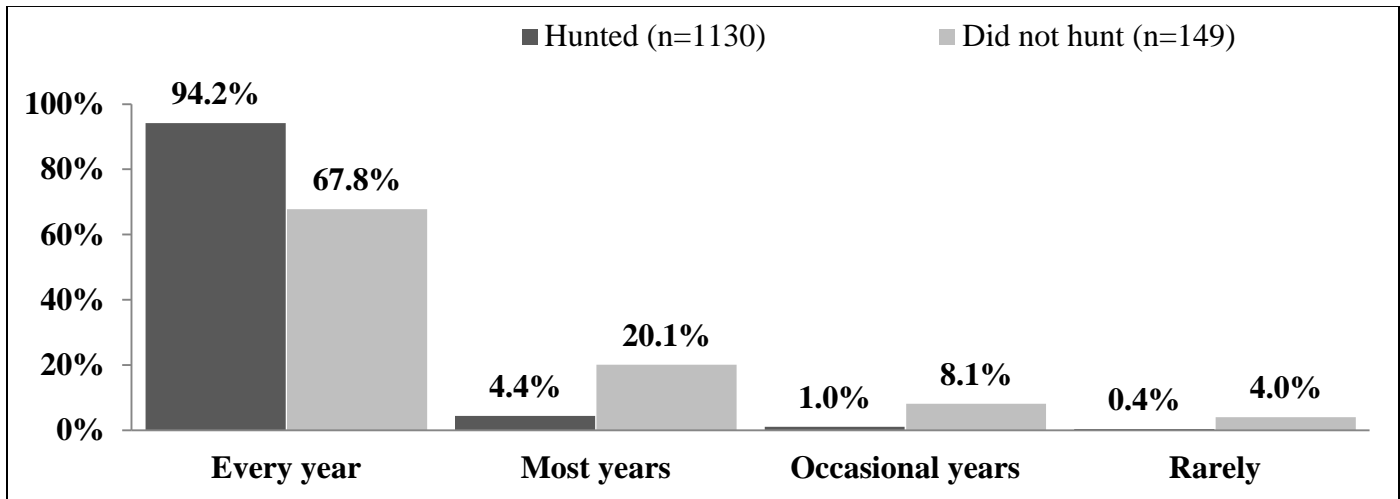


Figure 2.26. The frequency with which respondents purchase an Illinois hunting license.

Respondents were asked to self-identify their level of hunting skill on a 7-point scale where 1 was novice, 4 was intermediate, and 7 was expert. Most hunters self-identified at level between intermediate and expert for all aspects measured, and very few identified as novice (Table 2.13). Respondents reported a mean rating of 5.08 (± 1.2) for overall knowledge of hunting, 4.84 (± 1.3) for overall knowledge of game management, and 5.18 (± 1.2) for overall skill as a hunter. When asked about their attitudes the majority of hunters agreed with every statement regarding hunting (Table 2.14). Respondents were most likely to agree with social aspects of hunting; “I enjoy discussing hunting with friends” and “my closest friends are hunters”. The greatest amount of disagreement was with statements about how important hunting was to life behaviors; “I plan vacation time around hunting seasons” and “hunting determines much of my lifestyle”.

General Information

Almost two-thirds (65%) of hunters visited an Illinois state park at least once a year (Figure 2.27). Eight percent of hunters camped at an Illinois state park during a hunting trip within the last 5 years. The most popular parks among those hunters were Eldon Hazlet and Jim Edgar Panther Creek (Table 2.15) and 88.5% of hunters that camped were satisfied (Figure 2.28). Respondents to the 2015-16 Hunter Harvest Survey were mostly male (93.5%) (Figure 2.35), had a mean age of 51 years old, mode of 56 years old, and had been hunting for an average of 30 years. Counties hunted most frequently were Adams, Fayette, Fulton, Jefferson, Will, and most frequently listed counties of residence were Cook, Madison, Sangamon, St. Clair, and Will.

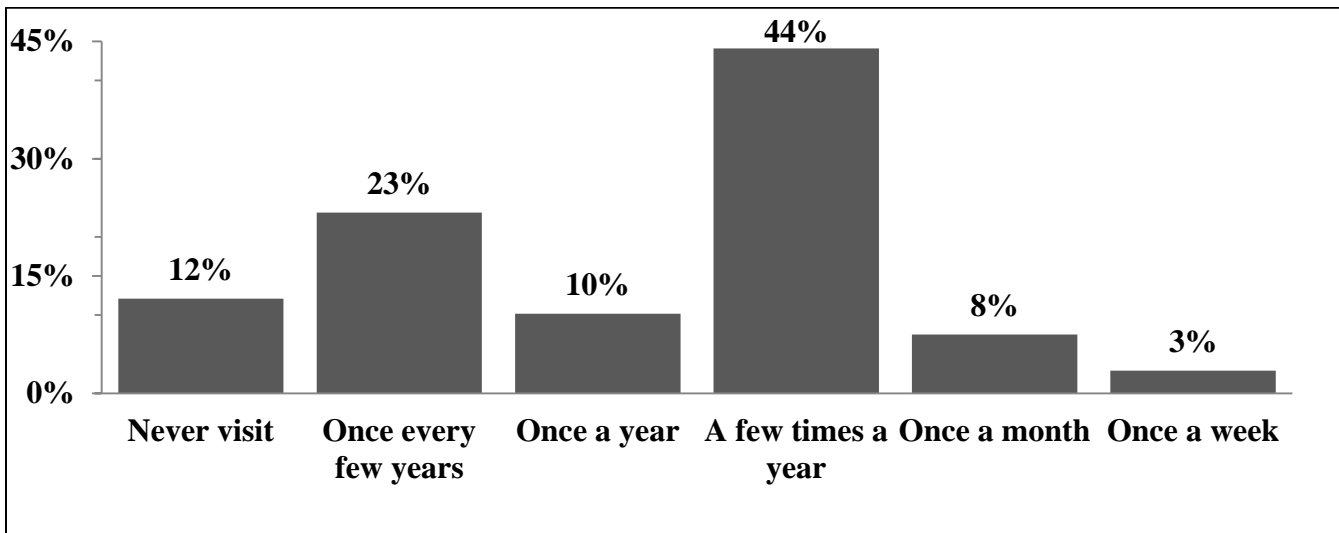


Figure 2.27. How frequently respondents visit State Parks in Illinois. (n=1,298)

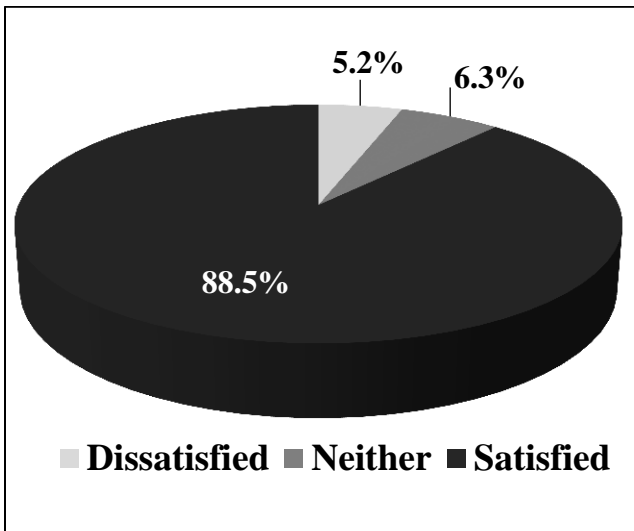


Figure 2.28. Satisfaction with camping in Illinois State park during hunting trip (n=96).

*Reduced from a 5 point scale.

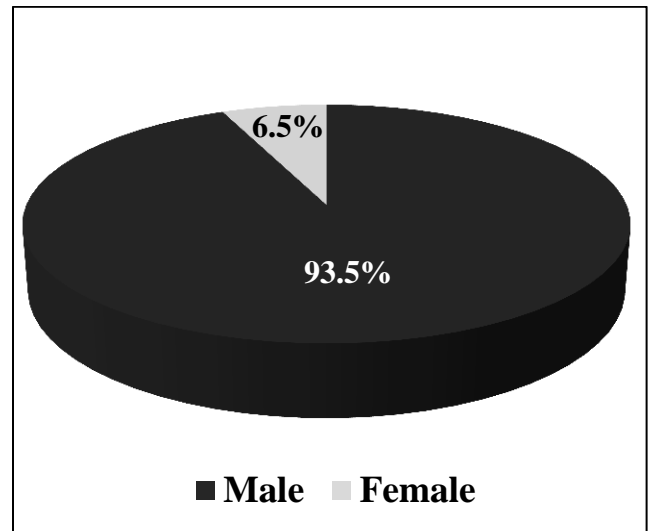


Figure 2.29. Gender distribution of Illinois hunters (n=1,319).

References

- Anderson, W.L., and L.K. Campbell. 1993. Illinois Hunter Harvest Survey, 1992. Illinois Department of Natural Resources, Federal Aid in Wildlife Restoration Project W-112-R, Job 1, Job Completion Report 65pg.
- IBM SPSS Inc. 2012. SPSS for Windows. IBM Corporation, 1 New Orchard Road, Armonk NY, U.S.A.
- Miller, C.A., L.K. Campbell and K.D. Caldwell. 1999. 1998-99 Illinois Hunter Harvest Survey Report. Illinois Department of Natural Resources, Federal Aid in Wildlife Restoration Project W-112-R-8, Job 1, Job Completion Report 77pg.

Table 2.1. Species that respondents intended to hunt (n=1,291) and number of hunters* who relied exclusively on public land to do so in Illinois during 2015-16.

Species	Number of hunters who intended to hunt species	Percent of hunters (%)	Number of hunters* who relied exclusively on public land	Percent of hunters (%)
Deer	1049	79.5	190	18.1
Turkeys	374	28.4	43	11.5
Squirrels	353	26.8	40	11.3
Doves	300	22.7	46	15.3
Pheasants	252	19.1	53	21.0
Rabbits	251	19.0	29	11.6
Ducks	237	18.0	86	36.3
Geese	223	16.9	57	25.6
Quail	120	9.1	18	15.0
Furbearers	130	8.2	14	10.8
Other	3	0.2	1	--
None	16	1.2	--	--

*Restricted to those who indicated intention to hunt indicated species during the 2015-16 season.

Table 2.2. Respondents' agreement or disagreement with statements regarding opinions about the IDNR, as reported from the 2015-16 Hunter Harvest survey.

	Strongly Disagree (%)	Disagree (%)	Slightly Disagree (%)	Unsure (%)	Slightly Agree (%)	Agree (%)	Strongly Agree (%)
I trust the IDNR to make the right decisions about wildlife. (n=430)	4.0	5.8	7.7	15.3	13.7	40.0	13.5
I trust the IDNR to make the right decisions about hunting seasons. (n=429)	3.5	4.7	8.6	13.8	17.0	39.9	12.6
I trust the IDNR to manage the land the right way. (n=430)	4.4	5.8	6.5	17.4	15.8	37.9	12.1
I trust that IDNR knows what's best for Illinois hunters. (n=430)	4.9	9.8	10.2	17.4	14.4	32.6	10.7
IDNR shares my views about wildlife management. (n=429)	4.2	7.5	7.7	21.7	17.0	29.4	12.6
IDNR shares my views about land management. (n=428)	4.9	5.1	7.9	27.3	15.4	27.6	11.7
IDNR shares my goals regarding hunting seasons. (n=427)	4.0	5.6	9.1	19.2	15.2	33.7	13.1

Table 2.3 Typical harvest and method of hunting.

	<i>n</i>	Firearm only hunter	Bow only hunter	Firearm and bow hunter
1 deer/year	441	46.5%	15.0%	38.5%
2 deer/year	326	28.2%	9.8%	62.0%
>=3 deer/year	123	5.7%	10.6%	83.7%

Table 2.4. Number of dead deer seen by Illinois hunter respondents between July through October 2015.*

Number of dead deer observed	Number of hunters	(# of dead deer observed x # of hunters)
1	33	33
2	32	64
3	16	48
4	9	36
5	7	35
6	3	18
7	2	14
8	2	16
9	1	9
10	4	40
20	2	40
26	1	26
43	1	43
TOTAL	113	422

*Indicates number of dead deer hunters personally observed in or next to bodies of water (creeks, ponds, lakes, etc.), were fresh enough to have died during the July-October period, and did not show any visible signs of trauma (broken bones or other wounds).

Table 2.5. Number of dead deer Illinois hunters reported to the IDNR during 2014.*

Number of dead deer reported	Number of hunters	Dead deer observed per hunter
1	2	2
2	3	6
3	1	3
4	1	4
6	1	6
20	1	20
TOTAL	9	41

*Indicates number of dead deer hunters personally observed in or next to bodies of water (creeks, ponds, lakes, etc.), were fresh enough to have died during the July-October period, and did not show any visible signs of trauma (broken bones or other wounds).

Table 2.6. Illinois counties in which hunters observed the most deer believed to have died from EHD or BTV as reported on the 2015-16 Hunter Harvest Survey.

County	Number of Illinois hunters that observed the most dead deer in this county
Pike	8
Adams	6
Hancock	4
Peoria	4
Brown	3
Clay	3
Fayette	3
Fulton	3
Jefferson	3
Johnson	3
Tazewell	3

Table 2.7. Deer hunters' perceptions of the impact of EHD and BTV on the Illinois deer population during 2015 in areas typically hunted ($n=774$).

Impact level	Number of hunters	Percent of hunters (%)
Decreased Considerably	80	10.3
Decreased Moderately	98	12.7
Decreased Slightly	146	18.9
No Change	385	49.7
Increased Slightly	30	3.9
Increased Moderately	26	3.4
Increased Considerably	9	1.2

*Cases selected for those who indicated they hunted deer in Illinois during 2015-16.

Table 2.8. Deer hunters' perceptions of the impact of EHD and BTV on the Illinois deer population during 2015 ($n=760$).

Impact level	Number of hunters	Percent of hunters (%)
Decreased Considerably	59	7.8
Decreased Moderately	138	18.2
Decreased Slightly	194	25.5
No Change	261	34.3
Increased Slightly	64	8.4
Increased Moderately	28	3.7
Increased Considerably	16	2.1

*Cases selected for those who indicated they hunted deer in Illinois during 2015-16.

Table 2.9. Change in number of **deer seen** by Illinois deer hunters during the 2015-16 deer season compared to 5 years ago ($n=835$).

Number of deer seen have:	Number of hunters	Percent of hunters (%)
Decreased Considerably	220	26.3
Decreased Moderately	186	22.3
Decreased Slightly	153	18.3
No Change	165	19.8
Increased Slightly	66	7.9
Increased Moderately	35	4.2
Increased Considerably	10	1.2

*Cases selected for those who indicated they hunted deer in Illinois during 2015-16.

Table 2.10. Change in number of **deer harvested** by deer hunters during the Illinois 2015-16 deer season compared to 5 years ago ($n=831$).

Number of deer harvested have:	Number of hunters	Percent of hunters (%)
Decreased Considerably	159	19.1
Decreased Moderately	115	13.8
Decreased Slightly	180	21.7
No Change	331	39.8
Increased Slightly	36	4.3
Increased Moderately	5	0.6
Increased Considerably	5	0.6

*Cases selected for those who indicated they hunted deer in Illinois during 2015-16.

Table 2.11. Favorite species to hunt.

Species	Did not hunt in 2015-16		Hunted in 2015-16	
	Number of hunters	Percent of hunters	Number of hunters	Percent of hunters
Deer	67	45.3%	754	66.9%
Ducks	9	6.1%	89	7.9%
Turkeys	4	2.7%	75	6.7%
Pheasants	20	13.5%	62	5.5%
Geese	6	4.1%	36	3.2%
Squirrels	15	10.1%	31	2.8%
Doves	5	3.4%	22	2.0%
Rabbits	5	3.4%	20	1.8%
Furbearers	2	1.4%	19	1.7%
Quail	7	4.7%	13	1.2%
None	8	5.4%	4	0.4%
Coyote*	0	0.0%	2	0.2%
Total	148		1127	

*Indicates write-ins provided by hunters.

Table 2.12. Number of favorite species usually harvested as compared to other hunters they know ($n=1,238$).

Considerably Fewer %	Moderately Fewer %	Slightly Fewer %	The Same %	Slightly More %	Much More %	Considerably More %
22.4	12.0	17.2	31.7	13.2	2.8	.6

Table 2.13. Respondents' skill level in comparison to other hunters.

	Novice		Intermediate			Expert	
	1 (%)	2 (%)	3 (%)	4 (%)	5 (%)	6 (%)	7 (%)
Overall knowledge of hunting (n=1,270).	1.4	2.2	3.9	19.8	33.2	31.1	8.4
Overall knowledge of game management (n=1,265).	2.4	3.2	7.0	23.1	31.5	25.5	7.4
Overall skill as a hunter (n=1,267).	1.5	2.1	3.9	17.6	28.7	36.3	9.8

Table 2.14. Respondents' agreement or disagreement with statements regarding attitudes toward hunting.

	Strongly	Disagree	Slightly	Disagree	Unsure	Slightly	Agree	Strongly					
	Disagree	(%)	Disagree	(%)	(%)	Agree	(%)	Agree	(%)				
☞ Hunting is one of the most important activities in my life. (n=1,273)	2.1	(%)	7.5	(%)	6.6	(%)	6.5	(%)	24.7	(%)	28.1	(%)	24.4
I spend a lot of time in the off-season planning for hunting. (n=1,269)	4.2	(%)	14.2	(%)	11.6	(%)	8.1	(%)	26.7	(%)	21.7	(%)	13.6
My closest friends are hunters. (n=1,268)	1.8	(%)	4.8	(%)	6.2	(%)	6.6	(%)	19.2	(%)	37.6	(%)	23.7
I would rather go hunting than do any other recreation. (n=1,268)	4.4	(%)	10.5	(%)	11.8	(%)	10.3	(%)	21.2	(%)	21.9	(%)	20.0
Hunting determines much of my lifestyle. (n=1,266)	6.9	(%)	16.0	(%)	14.5	(%)	11.4	(%)	23.5	(%)	16.2	(%)	11.5
I spend a lot of time before the season scouting the area I will hunt. (n=1,264)	6.2	(%)	13.8	(%)	14.4	(%)	7.7	(%)	28.2	(%)	18.8	(%)	10.9
I plan vacation time around hunting seasons. (n=1,261)	10.0	(%)	15.5	(%)	7.6	(%)	6.7	(%)	15.0	(%)	24.0	(%)	21.2
Hunting is an important way for me to spend time with my friends. (n=1,269)	4.3	(%)	7.5	(%)	6.4	(%)	7.1	(%)	22.0	(%)	32.0	(%)	20.8
I enjoy discussing hunting with friends. (n=1,267)	1.9	(%)	2.1	(%)	2.3	(%)	4.4	(%)	18.0	(%)	45.5	(%)	25.9
I have close friendships based on a common interest in hunting. (n=1,271)	3.0	(%)	6.5	(%)	5.5	(%)	6.0	(%)	20.2	(%)	34.3	(%)	24.5

Table 2.15. Most popular state parks that respondents reported camping at while hunting within the past five years ($n=100$).

State Park:	Number of hunters	Percent of hunters (%)
Eldon Hazlet	9	9.0
Jim Edgar Panther Creek	9	9.0
Siloam Springs State Park	9	9.0
Ferne Clyffe	7	7.0
Shawnee National Forest	6	6.0
Giant City	5	5.0
MS Palisades State Park	5	5.0
Rend Lake	5	5.0
Steven Forbes	5	5.0
Chain-o-Lakes	4	4.0
Moraine View State Park	4	4.0
Ramsey	4	4.0

Illinois Hunter Harvest Survey: 2015-2016 Seasons



Illinois Department of Natural Resources
Division of Wildlife Resources
&
Illinois Natural History Survey



The Department of Natural Resources is requesting disclosure of information that is necessary to accomplish the statutory purpose as outlined under the Illinois Compiled Statutes, The Wildlife Code, Chapter 520. Disclosure of information is voluntary. This study is funded by the federal Wildlife Restoration Fund through your purchase of hunting arms and ammunition.

THANK YOU FOR YOUR PARTICIPATION!

All of your responses will be kept confidential.
Please return this survey in the postage-paid return envelope provided.

Section 1. Hunting Activity and Harvest in Illinois. Please provide the following information to allow IDNR biologists to monitor game species harvest and conserve wildlife populations in Illinois.

1. Did you purchase a hunting license during 2015? ___ Yes ___ No (If “No,” Please go to Question 7)
2. Did you purchase your hunting license online? ___ Yes ___ No
- 2a. If “Yes” do you save your license as a PDF? ___ Yes ___ No
3. Did you hunt any wildlife species in Illinois between March 2015 and February 2016?
 ___ Yes ___ No (If “No,” Please go to Question 7)

4. Please report your hunting effort and harvest in Illinois for the following species between March 1, 2015-February 28, 2016. Include only game harvested and days you personally hunted in Illinois. Count only game you retrieved; **do not count animals you were not able to retrieve or animals that were trapped.** Count any part of a day hunted as 1 day.

<u>Species</u>	<u>Number of Days Hunted</u>	<u>Number Harvested</u>	<u>County Hunted Most Often</u>
Rabbit	_____	_____	_____
Quail (shooting preserve, club, etc.)	_____	_____	_____
Quail (wild)	_____	_____	_____
Pheasant (shooting preserve, club, etc.)	_____	_____	_____
Pheasant (wild)	_____	_____	_____
Dove	_____	_____	_____
Woodcock	_____	_____	_____
Crow	_____	_____	_____
Ground Hog (Woodchuck)	_____	_____	_____
Gray Squirrel	_____	_____	_____
Fox Squirrel	_____	_____	_____
Turkey – Spring	_____	_____	_____
Turkey – Fall Shotgun	_____	_____	_____
Turkey – Fall Archery	_____	_____	_____
Deer – Regular Firearm Season	_____	_____	_____
Deer – Muzzleloader-Only Season	_____	_____	_____
Deer – Archery Season	_____	_____	_____
Deer – Late Winter Firearm Season	_____	_____	_____
Deer – Special CWD season	_____	_____	_____
Raccoon	_____	_____	_____
Red Fox	_____	_____	_____
Gray Fox	_____	_____	_____
Coyote	_____	_____	_____
Opossum	_____	_____	_____

5. Did you harvest any Eurasian collared-doves in Illinois during the 2015 season?
 ___ Yes If “Yes,” how many? _____ ___ No ___ Not sure

3b. Which of the following are reasons you prefer the version you do? (Check **all that apply**).

- Easier for me to find times Suggested times for where I hunt are more accurate
 Easier to understand Other: _____

4. On which type of land do you hunt **most often**? (Please select one response.)

- My own private property Public property (State, Federal, and other public lands)
 IRAP land Private property **not** owned by me
 Private outfitter property Private property owned by my family

5. Did you hunt public land in Illinois during the 2015-16 hunting seasons?

- Yes No (If “No”, please go to Section 3)

5a. If “Yes”, which procedure(s) did you use to report your harvest(s)? (Please select all that apply.)

- Online reporting for Free Site Permit (“Windshield Card”)
 Online/Phone reporting for deer and turkeys only
 Drop box
 Check station

5b. How satisfied were you with the procedure(s) for reporting your harvest(s)?

Extremely Dissatisfied	Dissatisfied	Neither	Satisfied	Extremely Satisfied
1	2	3	4	5

6. Please give your opinions about the IDNR by circling the number that best represents your response.

	Strongly Disagree	Disagree	Slightly Disagree	Unsure	Slightly Agree	Agree	Strongly Agree
I trust the IDNR to make the right decisions about wildlife.	1	2	3	4	5	6	7
I trust the IDNR to make the right decisions about hunting seasons.	1	2	3	4	5	6	7
I trust the IDNR to manage the land the right way.	1	2	3	4	5	6	7
I trust that IDNR knows what’s best for Illinois hunters.	1	2	3	4	5	6	7
IDNR shares my views about wildlife management.	1	2	3	4	5	6	7
IDNR shares my views about land management.	1	2	3	4	5	6	7
IDNR shares my goals regarding hunting seasons.	1	2	3	4	5	6	7

Section 3. Youth Turkey Season Preferences in Illinois. Please answer the following questions to help us better understand hunter opinions about season preferences for youth turkey hunting in Illinois.

1. Have you ever hunted with or accompanied a youth hunter during the Illinois Youth Turkey Season?

_____ Yes _____ No (If “No,” please go to Section 4)

2. How much do you support combining North and South Zone Youth Turkey hunts into two weekends for turkey season?

Not at all Supportive		Slightly Supportive		Moderately Supportive		Extremely Supportive
1	2	3	4	5	6	7

Section 4. Deer bag limits and seasons in Illinois. Please answer the following questions to help us learn more about your preferences for deer bag limits and seasons in Illinois.

Current Regulations: No more than 2 antlered bucks per hunt year (all deer seasons combined), no bag limit on number of antlerless deer taken by individual hunters during all seasons. Number of deer harvested during Illinois gun seasons is controlled by permit quotas for each county or hunt area. Hunters may continue to purchase permits until quota is reached. Archery harvest is limited primarily by low hunter success rates (more than 90% of archery hunters kill either no deer or 1 deer).

1. Do you consider yourself a deer hunter? _____ Yes _____ No (If “No,” please go to Section 5)

2. When was the last time you deer hunted in Illinois? _____ Year

3. Which of the following **best describes** how you hunt deer in Illinois. (Please select one)

_____ Firearm only _____ Bow only (includes crossbow) _____ Both firearm and bow

4. **In a typical year,** how many deer do you **personally** harvest, including both bucks and does? (Please include deer harvested during ALL archery, firearm, muzzleloader, late-winter antlerless, **and** CWD seasons.

Total number of deer I personally harvest in a typical year in Illinois. Please circle your response.

1	2	3	4	5	6	7	8	9	10	>10
---	---	---	---	---	---	---	---	---	----	-----

5. **If the current buck limit of 2 stays the same,** how much do you disagree or agree that IDNR should implement an annual bag limit to restrict **the total number of deer** a hunter can take during the **archery deer season**?

Strongly Disagree	Disagree	Slightly Disagree	Unsure	Slightly Agree	Agree	Strongly Agree
1	2	3	4	5	6	7

6. **If you agree with a bag limit** during the **archery season,** how many total deer (including bucks **and** does) do you think an archery hunter should be able to legally harvest per year?

Total number of deer archery hunters should be allowed to harvest per year in Illinois. Please circle your response.

1	2	3	4	5	6	7	8	9	10	No Limit
---	---	---	---	---	---	---	---	---	----	----------

7. How much do you support a **continuous 10-day firearm deer season** beginning the day after Thanksgiving?
 Circle the number that best represents your response.

Not at all Supportive		Slightly Supportive		Moderately Supportive		Extremely Supportive
1	2	3	4	5	6	7

Section 5. EHD and BTV in White-tailed Deer in Illinois. Please answer the following questions about white-tailed deer and Epizootic Hemorrhagic Disease (EHD) and Blue Tongue Virus (BTV) in Illinois **during 2015**.

1. Using the table below, please report the number of dead deer you saw in or next to bodies of water (creeks, ponds, lakes, etc.) from **July through October 2015**. Report **ONLY** deer that (1) **YOU** actually saw; (2) were fresh enough to have died **DURING** the July-October period; (3) were **IN** or **BESIDE** a water source; and (4) **DID NOT** show any visible signs of trauma (broken bones or other wounds). **DO NOT** report deer that someone else told you about, if you did not actually see them.

Did you observe dead deer in this period?	If Yes, how many dead deer, meeting the criteria above did you see?	Did you report any of the dead deer you observed to the IDNR?	If Yes, how many dead deer did you report to the IDNR?
<input type="checkbox"/> Yes <input type="checkbox"/> No	_____ dead deer	<input type="checkbox"/> Yes <input type="checkbox"/> No	_____ reported

2. In which county did you observe the most deer that you believe died from EHD or BTV? _____ County

3. How do you think EHD and BTV impacted the deer population **during 2015** in areas **you typically hunt**? Please circle the number that matches your response.

Decreased Considerably	Decreased Moderately	Decreased Slightly	No Change	Increased Slightly	Increased Moderately	Increased Considerably
1	2	3	4	5	6	7

4. How do you think EHD and BTV impacted the deer population **during 2015** throughout the **entire state**? Please circle the number that matches your response.

Decreased Considerably	Decreased Moderately	Decreased Slightly	No Change	Increased Slightly	Increased Moderately	Increased Considerably
1	2	3	4	5	6	7

5. How did the number of deer **you saw** during the 2015-16 season compare to 5 years ago? Please circle the number that matches your response.

Decreased Considerably	Decreased Moderately	Decreased Slightly	No Change	Increased Slightly	Increased Moderately	Increased Considerably
1	2	3	4	5	6	7

6. How does the number of deer **you harvested** during the 2015-16 season compare to 5 years ago? Please circle the number that matches your response.

Decreased Considerably	Decreased Moderately	Decreased Slightly	No Change	Increased Slightly	Increased Moderately	Increased Considerably
1	2	3	4	5	6	7

Section 6. Attitudes Toward Wildlife and Hunting. Please answer the following questions so we can understand more about you as a hunter.

1. Which of the following describes how often you purchase an Illinois hunting license? (Check **only one**.)

____ Every year ____ Most years ____ Occasional years ____ Rarely

2. Which of the following is your favorite species to hunt? (Please select **only one**.)

____ Deer ____ Geese ____ Ducks ____ Turkeys
 ____ Pheasants ____ Quail ____ Squirrels ____ Rabbits
 ____ Doves ____ Furbearers ____ None ____ Other _____

2a. When hunting the species above how many do you usually harvest as compared to other hunters you know?

Considerably Fewer	Moderately Fewer	Slightly Fewer	The Same	Slightly More	Much More	Considerably More
1	2	3	4	5	6	7

3. Please rate **your skills** in comparison to other hunters as they apply to hunting.

	Novice			Intermediate			Expert
Overall knowledge of hunting.	1	2	3	4	5	6	7
Overall knowledge of game management.	1	2	3	4	5	6	7
Overall skill as a hunter.	1	2	3	4	5	6	7

4. Please answer the following questions regarding your attitudes toward hunting.

	Strongly Disagree	Disagree	Slightly Disagree	Unsure	Slightly Agree	Agree	Strongly Agree
Hunting is one of the most important activities in my life.	1	2	3	4	5	6	7
I spend a lot of time in the off-season planning for hunting.	1	2	3	4	5	6	7
My closest friends are hunters.	1	2	3	4	5	6	7
I would rather go hunting than do any other recreation.	1	2	3	4	5	6	7
Hunting determines much of my lifestyle.	1	2	3	4	5	6	7
I spend a lot of time before the season scouting the area I will hunt.	1	2	3	4	5	6	7
I plan vacation time around hunting seasons.	1	2	3	4	5	6	7
Hunting is an important way for me to spend time with my friends.	1	2	3	4	5	6	7
I enjoy discussing hunting with friends.	1	2	3	4	5	6	7
I have close friendships based on a common interest in hunting.	1	2	3	4	5	6	7

Section 7. Illinois State Park Use. The following questions will allow better understanding of hunters' use of State Parks in Illinois.

1. Which best describes, how often you visit State Parks in Illinois? (Please select one)

Never visit	Once every few years	Once a year	A few times a year	Once a month	Once a week
1	2	3	4	5	6

2. Over the past 5 years, have you camped at any Illinois State Parks during hunting trips?

_____ Yes _____ No (If no, skip to section 8)

2a. If "Yes," please list the State Park(s) in which you camped during hunting trips:

2b. Please rate your overall satisfaction with your experience camping in Illinois State Parks during hunting trips.

Extremely Dissatisfied	Dissatisfied	Neither	Satisfied	Extremely Satisfied
1	2	3	4	5

Section 8. Background Information. The following questions allow us to understand more about the people involved in hunting in Illinois. All responses are kept confidential.

1. How many years have you hunted in Illinois? _____ Years

2. What is your county of residence? _____ County

3. What county do you hunt in **most often**? _____ County

4. What is your gender? _____ Male _____ Female

5. Please give your age. _____ Years

Comments



THANK YOU FOR YOUR TIME AND ASSISTANCE!
Please return this survey in the postage-paid envelope provided.

The Illinois Department of Natural Resources receives federal assistance and therefore must comply with federal anti-discrimination laws. In compliance with the Illinois Human Rights Act, the Illinois Constitution, Title VI of the 1964 Civil Rights Act, Section 504 of the Rehabilitation Act as amended, and the U.S. Constitution, the Illinois Department of Natural Resources does not discriminate on the basis of race, color, sex, national origin, age, or disability. If you believe you have been discriminated against in any program, activity, or facility, please contact the Equal Employment Opportunity Officer, Department of Natural Resources, One Natural Resources Way, Springfield, IL 62701-1787, (217) 782-7616 or the Officer of Human Resources, U.S. Fish and Wildlife Service, Washington, D.C. 20240.



ILLINOIS NATURAL HISTORY SURVEY

Prairie Research Institute

University of Illinois at Urbana-Champaign

Dear Illinois Hunter,

Your name was randomly selected from the list of 2015 Illinois hunting license purchasers. We are asking you to provide information about your activities during the 2015-2016 hunting seasons in Illinois. **Even if you did not hunt in Illinois during the 2015-2016 seasons, we ask that you please take a few minutes to complete the portions of the questionnaire that pertain to you.** A postage paid envelope is provided for returning the questionnaire to us.

This study, jointly conducted by the Illinois Department of Natural Resources and the Illinois Natural History Survey, is an effort to learn about hunting activities in Illinois. Results of this study will help wildlife managers make decisions to improve hunting opportunities and to better manage Illinois' wildlife populations. **Your responses are voluntary and completely confidential.** By responding you will help us more effectively manage wildlife and hunting in Illinois.

If you do not wish to participate, please return the blank questionnaire so we can remove your name from our mailing list.

You may access the results of this and other studies of hunters and hunting in Illinois at <http://www.inhs.illinois.edu/programs/hd/>. You may also find information about Illinois Department of Natural Resources wildlife management programs and wildlife in Illinois at <http://dnr.state.il.us/orc/wildliferesources/>.

If you have questions regarding this study, please call us at (217) 244-5121.

Sincerely,

A handwritten signature in black ink, appearing to read "Craig A. Miller".

Craig A. Miller
Human Dimensions Research Program



1816 South Oak Street,
Champaign, Illinois 61820 USA

Administrative Regions of Illinois



Appendix C

Dear Illinois Hunter,

Recently you were mailed a questionnaire about your hunting activities in Illinois. We have not yet received your response. **If you have already returned the questionnaire, we thank you. If you have not returned the questionnaire, please do so as soon as possible. Your input is very important!**

Your name and address will be deleted from our mailing list when your questionnaire is received. Thank you for your time and cooperation.



ILLINOIS NATURAL HISTORY SURVEY

Prairie Research Institute

University of Illinois at Urbana-Champaign

Dear Illinois Hunter,

Your name was randomly selected from the list of 2015 Illinois hunting license purchasers. We recently mailed you a questionnaire regarding your hunting experiences in Illinois during the 2015-2016 hunting seasons. If you have already returned the questionnaire, we thank you.

If you have not returned your completed questionnaire, please do so as soon as possible. We have enclosed another copy for you. The information you and other selected hunters provide will help wildlife managers make decisions to improve hunting opportunities and to better manage Illinois' wildlife populations. **Your responses are voluntary and completely confidential.**

Even if you did not hunt in Illinois during the 2015-2016 seasons, we ask that you please take a few minutes to complete the portions of the questionnaire that pertain to you. A postage paid envelope is provided for returning the questionnaire to us.

You may access the results of this and other studies of hunters and hunting in Illinois at <http://www.inhs.illinois.edu/programs/hd/>. You may also find information about Illinois Department of Natural Resources wildlife management programs and wildlife in Illinois at <http://dnr.state.il.us/orc/wildliferesources/>.

If you have questions regarding this study, please call (217) 244-5121.

Thank you for helping with this important study.

Sincerely,

A handwritten signature in black ink, appearing to read "Craig A. Miller".

Craig A. Miller
Human Dimensions Research Program



1816 South Oak Street,
Champaign, Illinois 61820 USA

Administrative Regions of Illinois





ILLINOIS NATURAL HISTORY SURVEY

Prairie Research Institute

University of Illinois at Urbana-Champaign

Dear Illinois Hunter,

We recently mailed you a questionnaire regarding your hunting experiences in Illinois during the 2015-2016 hunting seasons. If you have already returned the questionnaire, we thank you.

If you have not returned your completed questionnaire, please do so as soon as possible. We have enclosed another copy for you. The information you and other selected hunters provide will help wildlife managers make decisions to improve hunting opportunities and to better manage Illinois' wildlife populations. **Your responses are voluntary and completely confidential.**

Even if you did not hunt in Illinois during the 2015-2016 seasons, we ask that you please take a few minutes to complete the portions of the questionnaire that pertain to you. A postage paid envelope is provided for returning the questionnaire to us.

You may access the results of this and other studies of hunters and hunting in Illinois at <http://www.inhs.illinois.edu/programs/hd/>. You may also find information about Illinois Department of Natural Resources wildlife management programs and wildlife in Illinois at <http://dnr.state.il.us/orc/wildliferesources/>.

If you have questions regarding this study, please call (217) 244-5121.

Thank you for helping with this important study.

Sincerely,

A handwritten signature in black ink, appearing to read "Craig A. Miller".

Craig A. Miller
Human Dimensions Research Program

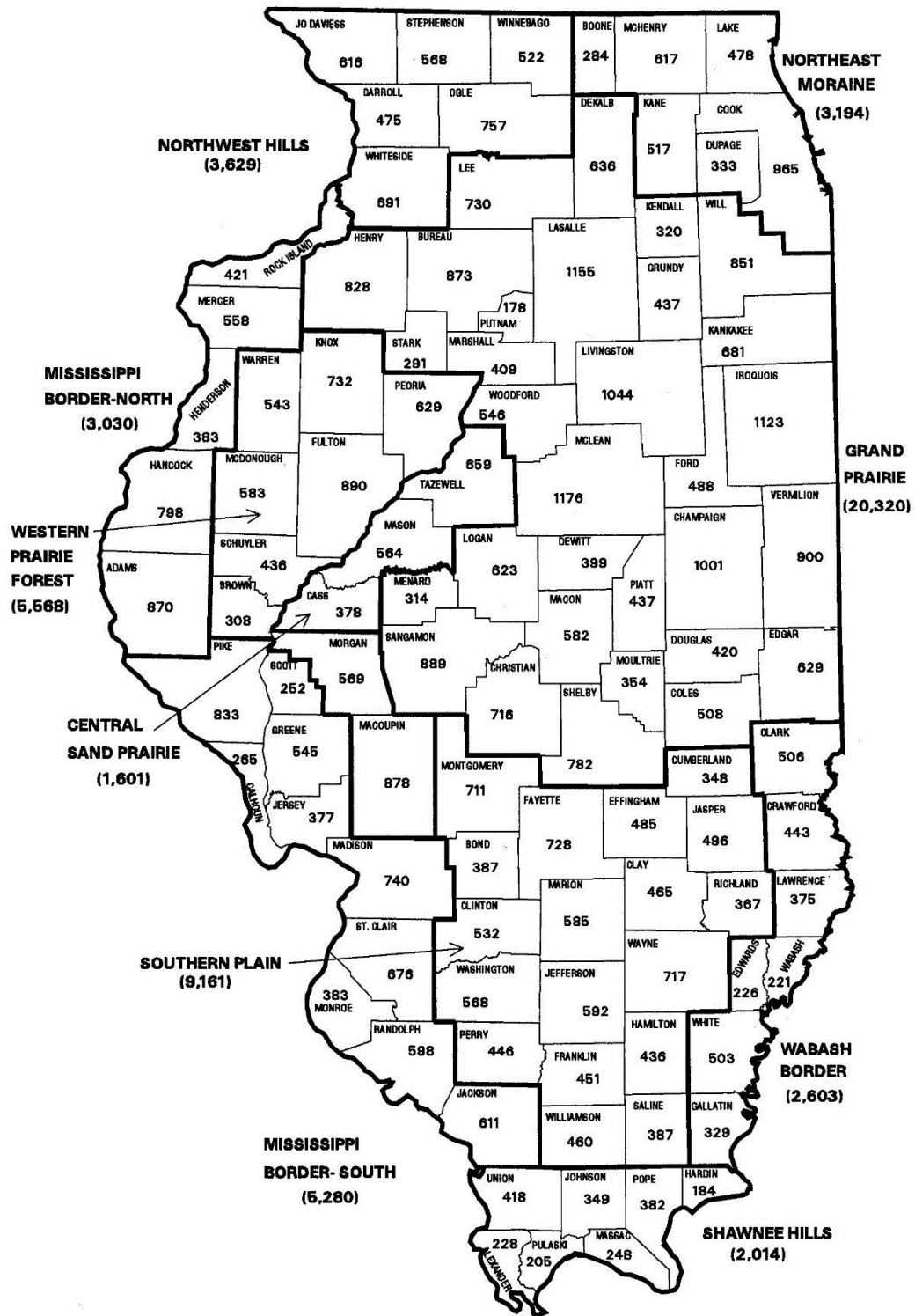


Administrative Regions of Illinois



Appendix F

Wildlife management units in Illinois (square miles in parentheses).



Appendix G

Administrative regions in Illinois.



Appendix H

2015-2016 Season Dates and Limits Information

Small Game	SPECIES	DATES (INCLUSIVE) AND ZONES	HOURS	DAILY LIMIT	POSSESSION LIMIT
	Rabbit (Cottontail & Swamp)	Nov. 7, 2015 - Feb. 15, 2016 (Statewide)	Sunrise to sunset	4	10 ^a
	Cock Pheasant	Nov. 7, 2015 - Jan. 8, 2016 (North) Nov. 7, 2015 - Jan. 15, 2016 (South)		2	6 ^a
	Hungarian (Gray) Partridge			2	6 ^a
	Quail (Bobwhite)			8	20 ^a
	Squirrel (Fox and Gray)	Aug. 1, 2015 - Feb. 15, 2016 (Statewide) Closed Nov. 20 - 22 and Dec. 3 - 6 in counties open for firearm deer hunting	1/2 hour before sunrise to 1/2 hour after sunset	5	10 ^a
	Woodchuck (Groundhog)	June 1, 2015 - March 31, 2016 Closed Nov. 20 - 22 and Dec. 3 - 6 in counties open for firearm deer hunting	Sunrise to sunset	No Limit	

Deer & Turkey	SPECIES	DATES (INCLUSIVE) AND ZONES	HOURS	LIMIT	
	Firearm Deer (Handgun, Muzzleloader & Shotgun)	Nov. 20 - 22; Dec. 3 - 6, 2015	1/2 hour before sunrise to 1/2 hour after sunset	One deer per firearm permit ^f	
	Deer (Muzzleloading rifles only)	Dec. 11 - 13, 2015 (also allowed Dec. 3 - 6)		One deer per muzzleloading rifle permit ^f	
	Special CWD Deer Season	Dec. 31, 2015 - Jan. 3, 2016 and Jan. 15 - 17, 2016		One deer per valid deer permit ^g	
	Late-Winter Antlerless Deer (Handgun, Muzzleloader & Shotgun)			One antlerless deer per permit	
	Deer (Archery in counties with a firearm season and west of Rt. 47 in Kane County)			One deer per archery permit ^f	
	Deer (Archery in Cook, DuPage, Kane [east of Route 47] and Lake counties)	Oct. 1, 2015 - Jan. 17, 2016		1/2 hour before sunrise to 1 p.m.	One deer
	Youth Firearm Deer Season	Oct. 10 - 12, 2015 and Nov. 20 - 22, 2015			One gobbler or bearded hen, counts toward maximum of 3 spring permits
	Youth Turkey Season (1 permit per year)	March 26 - 27, 2016 (South) April 2 - 3, 2016 (North)	1/2 hour before sunrise to sunset	One gobbler or bearded hen per permit, maximum of 3	
	Turkey (Spring Shotgun or Archery)	April 4 - May 5, 2016 ^b (South) April 11 - May 12, 2016 ^b (North)		One either-sex turkey per permit, maximum of 2	
	Turkey (Fall Shotgun Season)	Oct. 24 - Nov. 1, 2015	1/2 hour before sunrise to 1/2 hour after sunset	One either-sex turkey per permit, maximum of 2	
	Turkey (Fall Archery)	Oct. 1, 2015 - Jan. 17, 2016, except closed during firearm deer season in counties open to firearm deer hunting		One either-sex turkey per permit, maximum of 2	

Migratory Game Birds	SPECIES	DATES (INCLUSIVE) AND ZONES	HOURS	DAILY LIMIT	POSSESSION LIMIT
	Dove ^c	Sept. 1 - Nov. 14, 2015; Dec. 26, 2015 - Jan. 9, 2016	Sunrise to sunset	15 ^c	45 ^c
	Teal (tentative)	Sept. 5 - 20, 2015		6	18
	Early Canada Goose	Sept. 1 - 15, 2015	North and Central	5	15
			South Central & South	2	6
	Rail (Sora & Virginia only)	Sept. 5 - Nov. 13, 2015	Sunrise to sunset	25	75
	Common Snipe	Sept. 5 - Dec. 20, 2015		8	24
	Woodcock	Oct. 17 - Nov. 30, 2015		3	9
	Crow	Oct. 28, 2015 - Feb. 28, 2016	1/2 hour before sunrise to sunset	No Limit	
The season dates for Migratory Waterfowl seasons that occur after Oct. 1 will be available in September. See 2015-2016 Digest of Waterfowl Hunting Regulations.					

2015-2016 Season Dates and Limits Information *(continued)*

Furbearers—Hunting	SPECIES	DATES (INCLUSIVE) AND ZONES	HOURS	LIMIT
	Raccoon and Opossum	Nov. 5, 2015 - Feb. 10, 2016 (North) Nov. 10, 2015 - Feb. 15, 2016 (South) Closed Nov. 20 - 21 and through 6 p.m. Nov. 22 and closed Dec. 3 - 5 and through 6 p.m. Dec. 6 in counties open for firearm deer hunting	Unrestricted except Nov. 5 (North) and Nov. 10 (South) opens at sunrise ^d	No Limit
	Fox (Red and Gray)	Nov. 10, 2015 - Jan. 31, 2016 (Statewide) Closed Nov. 20 - 21 and through 6 p.m. Nov. 22 and closed Dec. 3 - 5 and through 6 p.m. Dec. 6 in counties open for firearm deer hunting	Unrestricted except Nov. 10 opens at sunrise ^d	
	Coyote and Striped Skunk	Year round (Statewide) Closed Nov. 20 - 21 and through 6 p.m. Nov. 22 and closed Dec. 3 - 5 and through 6 p.m. Dec. 6 in counties open for firearm deer hunting ^e	1/2 hour before sunrise to 1/2 hr. after sunset; open 24 hours Nov. 10, 2015 - March 15, 2016 ^e	

Furbearers—Trapping	SPECIES	DATES (INCLUSIVE) AND ZONES	LIMIT	SPECIAL REGULATIONS
	Raccoon, Opossum, Skunk, Weasel, Mink, Muskrat, Fox (Red and Gray), Coyote, Badger	Nov. 5, 2015 - Jan. 20, 2016 (North) Nov. 10, 2015 - Jan. 25, 2016 (South)	None except for badger, which is limited to 2 per person per season in north zone and 1 per person per season in south zone	
	Woodchuck (Groundhog)	June 1 - Sept. 30, 2015 (Statewide)	None	
	Beaver	Nov. 5, 2015 - March 31, 2016 (North) Nov. 10, 2015 - March 31, 2016 (South)		
	River Otter	Nov. 5, 2015 - March 31, 2016 (North) Nov. 10, 2015 - March 31, 2016 (South)	5 per person per season (statewide)	Must purchase Otter Registration Permit within 48 hours after each otter is trapped. Must affix official CITES tag to each pelt.
	Extended Spring Season for Mink and Muskrat	Begins at sunset on Jan. 20, 2016 - closes at sunset on Feb. 15, 2016 (North) Begins at sunset on Jan. 25, 2016 - closes at sunset on Feb. 15, 2016 (South)	None	No foothold traps may be set for mink or muskrat. Body-gripping (killer) traps must be completely submerged underwater.

^a On the 2nd day of the hunting season, you may possess no more than twice the daily bag limit.

^b South — 1st season — April 4 - 8; 2nd season — April 9 - 14; 3rd season — April 15 - 20; 4th season — April 21 - 27; 5th season — April 28 - May 5
North — 1st season — April 11 - 15; 2nd season — April 16 - 21; 3rd season — April 22 - 27; 4th season — April 28 - May 4; 5th season — May 5 - 12

^c The daily bag and possession limits include mourning doves and white-winged doves in the aggregate. There is no bag limit on Eurasian-collared doves and ringed turtle doves, but they may be taken only during the established season dates and hours and using only legal methods for mourning doves. Hunters may not remain in the field for the purpose of taking Eurasian-collared doves or ringed turtle doves after they reach their daily bag limit for mourning/white-winged doves.

^d During the Archery Deer Season bow hunting hours for coyote, striped skunk, raccoon, opossum, red fox and gray fox will be 1/2 hour before sunrise to 1/2 hour after sunset.

^e Hunters with unfilled firearm deer permits may take coyotes during firearm deer season by shotgun with slugs, muzzleloader or handgun from 1/2 hour before sunrise to 1/2 hour after sunset.

^f No hunter, regardless of the quantity or type of permits in his/her possession, may harvest more than two antlered deer during a year, including the youth, archery, muzzleloader and firearm seasons. For the purpose of this bag limit, deer seasons are considered to be in the same year if their opening dates are within the same 12-month period that begins July 1.

^g Antlered deer bag limit does not apply to this season.