

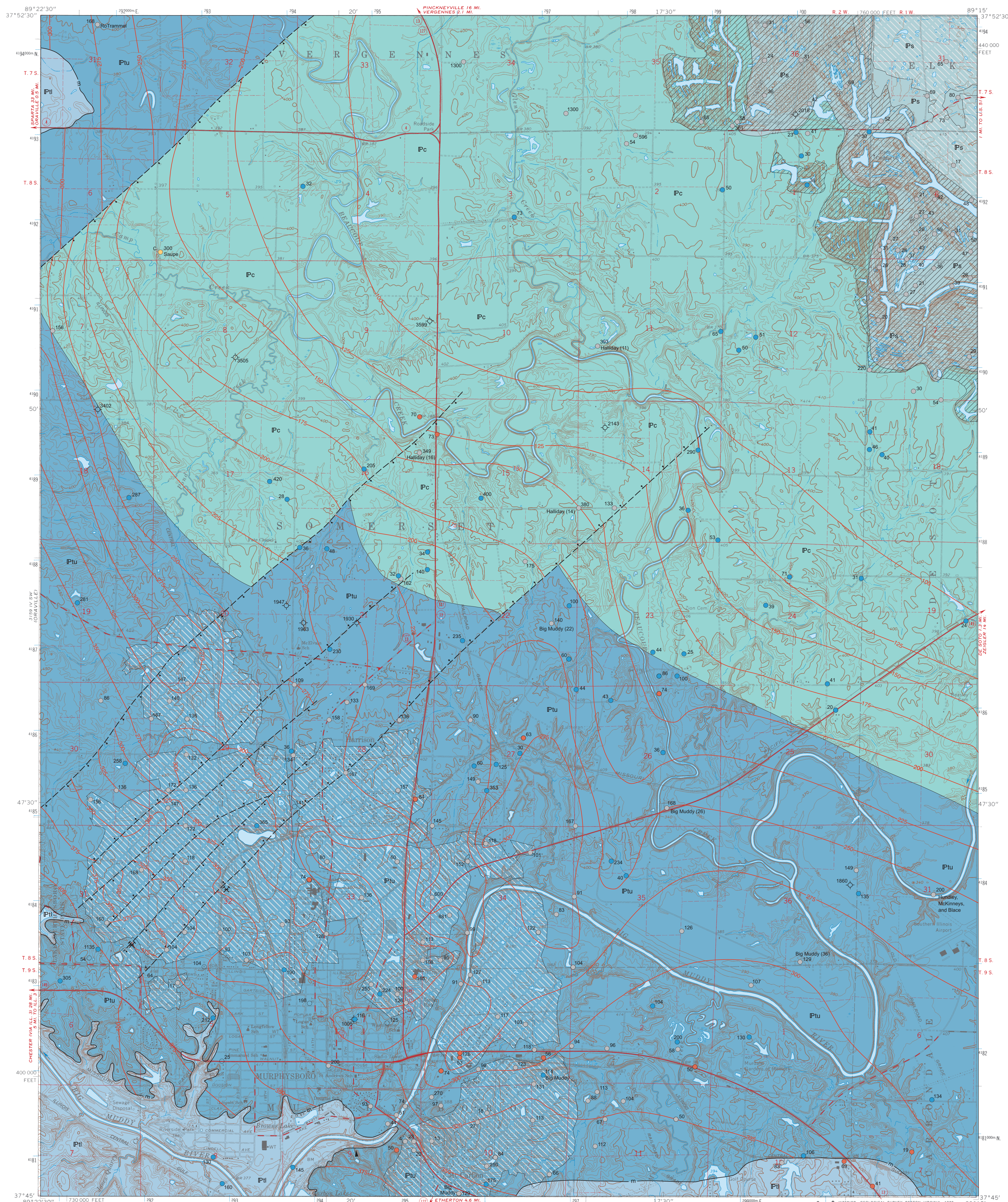
BEDROCK GEOLOGY OF MURPHYSBORO QUADRANGLE

JACKSON COUNTY, ILLINOIS

Illinois Department of Natural Resources
ILLINOIS STATE GEOLOGICAL SURVEY
William W. Shilts, Chief

Russell J. Jacobson, F. Brett Denny, and Gary W. Griffith
2007

Illinois Preliminary Geologic Map
IPGM Murphysboro-BG



EXPLANATION

- Surface mine (coal)
- Underground mine (coal)

Desmoinesian

- Shelburn Formation
- Carbonate Formation

Atokan?

- Upper Tradewater Formation
m. Murphysboro Coal Member
- Lower Tradewater Formation

Symbols

- Open pit mine (abandoned)
- Outcrop of special note, shown where contact or map unit was well exposed at time of mapping

Drill Holes
from which subsurface data were obtained

- Stratigraphic boring
- Water well
- Engineering boring
- Coal boring
- Dry hole
- Label (c) indicates core samples. Numeric label indicates total depth of boring in feet.

Line Symbols
dashed where inferred

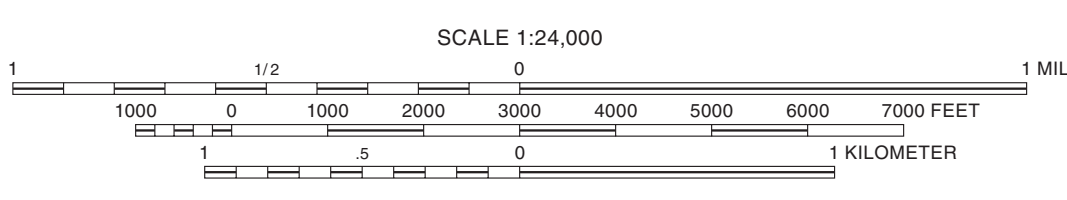
- Contact
- Normal fault: bar and ball on downthrown side
- Structure contour on Murphysboro Coal; contour interval 25 feet

Note: This is a subcrop map, showing bedrock surface with all Quaternary deposits removed. Geology shown as it was prior to surface mining. Well and boring records are on file at the ISGS Geological Records Unit and are available online from the ISGS Web site.

Base map compiled by Illinois State Geological Survey from digital data (Raster Feature Separates) provided by the United States Geological Survey. Topography compiled by photogrammetric methods from aerial photographs taken 1965. Field checked 1968. Revisions from aerial photographs taken 1976 and other source data. Map edited 1978.

North American Datum of 1927 (NAD 27)
Projection: Transverse Mercator
10,000-foot ticks: Illinois State Plane Coordinate system, west zone (Transverse Mercator)
1,000-meter ticks: Universal Transverse Mercator grid system, zone 16

Recommended citation:
Jacobson, R.J., F.B. Denny, and G.W. Griffith, 2007. Bedrock Geology of Murphysboro Quadrangle, Jackson County, Illinois: Illinois State Geological Survey, Illinois Preliminary Geologic Map, IPGM Murphysboro-BG, 2 sheets, 1:24,000, 6-page report.



Released by the authority of the State of Illinois: 2007

Geology based on field work by R. Jacobson, B. Denny, and G. Griffith, 2006-2007.
Digital cartography by J. Domier, S. Geegan, and S. Radl, Illinois State Geological Survey.

This Illinois Preliminary Geologic Map (IPGM) is a lightly edited product, subject to less scientific and cartographic review than our Illinois Geological Quadrangle (IGQ) series. It will not necessarily correspond to the format of IGQ series maps, or to those of other IPGM series maps. Whether or when this map will be upgraded depends on the resources and priorities of the ISGS.

The Illinois State Geological Survey, the Illinois Department of Natural Resources, and the State of Illinois make no guarantee, expressed or implied, regarding the correctness of the interpretations presented in this document and accept no liability for the consequences of decisions made by others on the basis of the information presented here. The geologic interpretations are based on data that may vary with respect to accuracy of geographic location, the type and quantity of data available at each location, and the scientific and technical qualifications of the data sources. Maps or cross sections in this document are not meant to be enlarged.



For more information contact:
Illinois State Geological Survey
615 East Peabody Drive
Champaign, Illinois 61820-6964
(217) 244-2414
<http://www.isgs.uiuc.edu>



1	2	3
4	5	
6	7	8

ADJOINING QUADRANGLES
1 Ava
2 Vergennes
3 Elkhart
4 Craville
5 De Soto
6 Gosham
7 Pomona
8 Carbondale

1°
APPROXIMATE MEAN DECLINATION, 2007

ROAD CLASSIFICATION

- Primary highway, hard surface
- Secondary highway, hard surface
- Light-duty road, hard or improved surface
- Unimproved road
- State Route

