

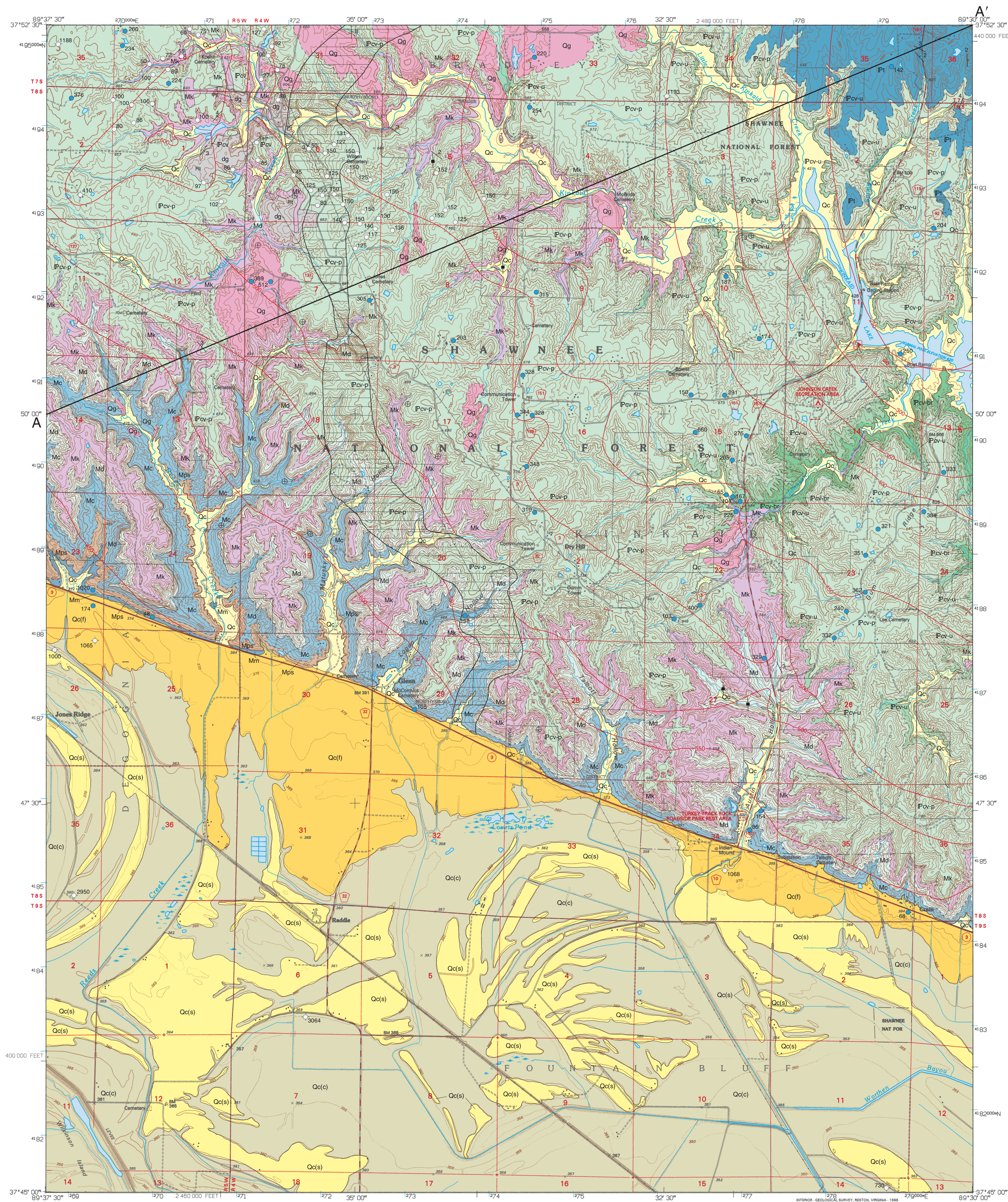
# BEDROCK GEOLOGY OF RADDLE QUADRANGLE

## JACKSON COUNTY, ILLINOIS

Illinois Department of Natural Resources  
ILLINOIS STATE GEOLOGICAL SURVEY  
William W. Shills, Chief

Joseph A. Devera  
2005

Illinois Preliminary Geologic Map  
IPGM Raddle-BG

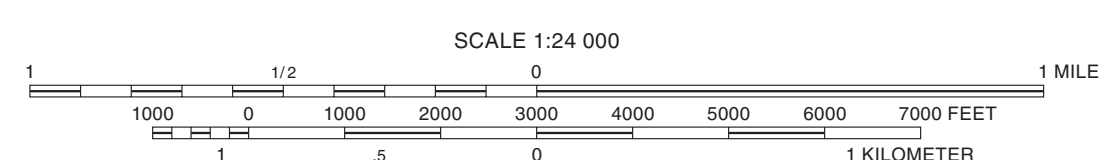


- ### EXPLANATION
- |              |                                |               |                           |
|--------------|--------------------------------|---------------|---------------------------|
| dg           | disturbed ground               |               |                           |
| Oc(f)        | Cahokia Formation (tan facies) | Quaternary    | Holocene and Pleistocene  |
| Oc(s)        | (sandy facies)                 |               |                           |
| Oc(c)        | (clayey facies)                |               |                           |
| Unconformity |                                |               |                           |
| Og           | Glasford Formation             | Pennsylvanian | Desmoinesian and Atokan ? |
| Unconformity |                                |               |                           |
| Pt           | Tradewater Formation           | Mississippian | Morrowan                  |
| Unconformity |                                |               |                           |
| Pcv-p        | Caseville Formation            |               |                           |
| Pcv-u        | Pounds Sandstone               |               |                           |
| Pcv-v        | unnamed shale                  | Mississippian | Chesterian                |
| Unconformity |                                |               |                           |
| Mk           | Kinkaid Ls                     | Mississippian | Chesterian                |
| Md           | Degonia Ss                     |               |                           |
| Mc           | Clore Fm                       |               |                           |
| Mps          | Palestine Fm                   |               |                           |
| Mm           | Menard Ls                      |               |                           |
- 
- ### Symbols
- 20 Strike and dip of bedding, number indicates degree of dip
  - ⊕ Horizontal bedding
  - ⊥ Vertical joints
- ### Drill Holes
- from which subsurface data was obtained. Numbers indicate total depth of boring in feet
- 200 Water well
  - 100 Limestone boring
  - 410 Dry oil test
- Note: Numbers indicate total depth of boring in feet
- ### Line Symbols
- dashed where inferred, dotted where concealed
- Contact
  - - - 440 Structure contours on the base of the Kinkaid Limestone, contour interval 50 feet
  - ▬ Basal Pennsylvanian paleovalley
  - A—A' Line of cross section

Base map compiled by Illinois State Geological Survey from digital data provided by the United States Geological Survey. Compiled from imagery dated 1965. Revised from imagery dated 1993. PLS and survey control current as of 1968. Contours and elevations current as of 1965. Partial field check by U.S. Forest Service 1994. Map edited 1996.

North American Datum of 1983 (NAD 83)  
Projection: Transverse Mercator  
10,000-foot ticks: Illinois State Plane Coordinate system, west zone (Transverse Mercator)  
1,000-meter ticks: Universal Transverse Mercator grid system, zone 16

Recommended citation:  
Devera, J.A., 2005. Bedrock Geology of Raddle Quadrangle, Jackson County, Illinois; Illinois State Geological Survey, Illinois Geologic Quadrangle Map, IGQ Raddle-BG, 1:24,000.



SCALE 1:24,000  
BASE MAP CONTOUR INTERVAL 20 FEET  
SUPPLEMENTARY CONTOUR INTERVAL 5 FEET  
NATIONAL GEODETIC VERTICAL DATUM OF 1929

Released by the authority of the State of Illinois: 2005

Geology based on field work by J. Devera, 2004-2005.

Digital cartography by M. Jones, Illinois State Geological Survey.

This Illinois Preliminary Geologic Map (IPGM) is a lightly edited product, subject to less scientific and cartographic review than our Illinois Geological Quadrangle (IGQ) series. It will not necessarily correspond to the format of IGQ series maps, or to those of other IPGM series maps. Whether or when this map will be upgraded depends on the resources and priorities of the ISGS.

The Illinois State Geological Survey, the Illinois Department of Natural Resources, and the State of Illinois make no guarantee, expressed or implied, regarding the correctness of the interpretations presented in this document and accept no liability for the consequences of decisions made by others on the basis of the information presented here. The geologic interpretations are based on data that may vary with respect to accuracy of geographic location, the type and quantity of data available at each location, and the scientific and technical qualifications of the data sources. Maps or cross sections in this document are not meant to be enlarged.

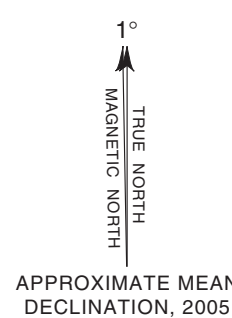


For more information contact:  
Illinois State Geological Survey  
615 East Peabody Drive  
Champaign, Illinois 61820-6964  
(217) 244-2414  
<http://www.isgs.uiuc.edu>



|   |   |   |
|---|---|---|
| 1 | 2 | 3 |
| 4 | 5 | 6 |
| 7 | 8 |   |

ADJOINING QUADRANGLES  
1 Weig  
2 Wilshire  
3 Ava  
4 Rockwood  
5 Orville  
6 Crossman  
7 Altenburg  
8 Gorham



|                                 |   |
|---------------------------------|---|
| Primary highway, hard surface   | Light-duty road, hard or improved surface |
| Secondary highway, hard surface | Unimproved road                           |
| State Route                     | County Route                              |

