

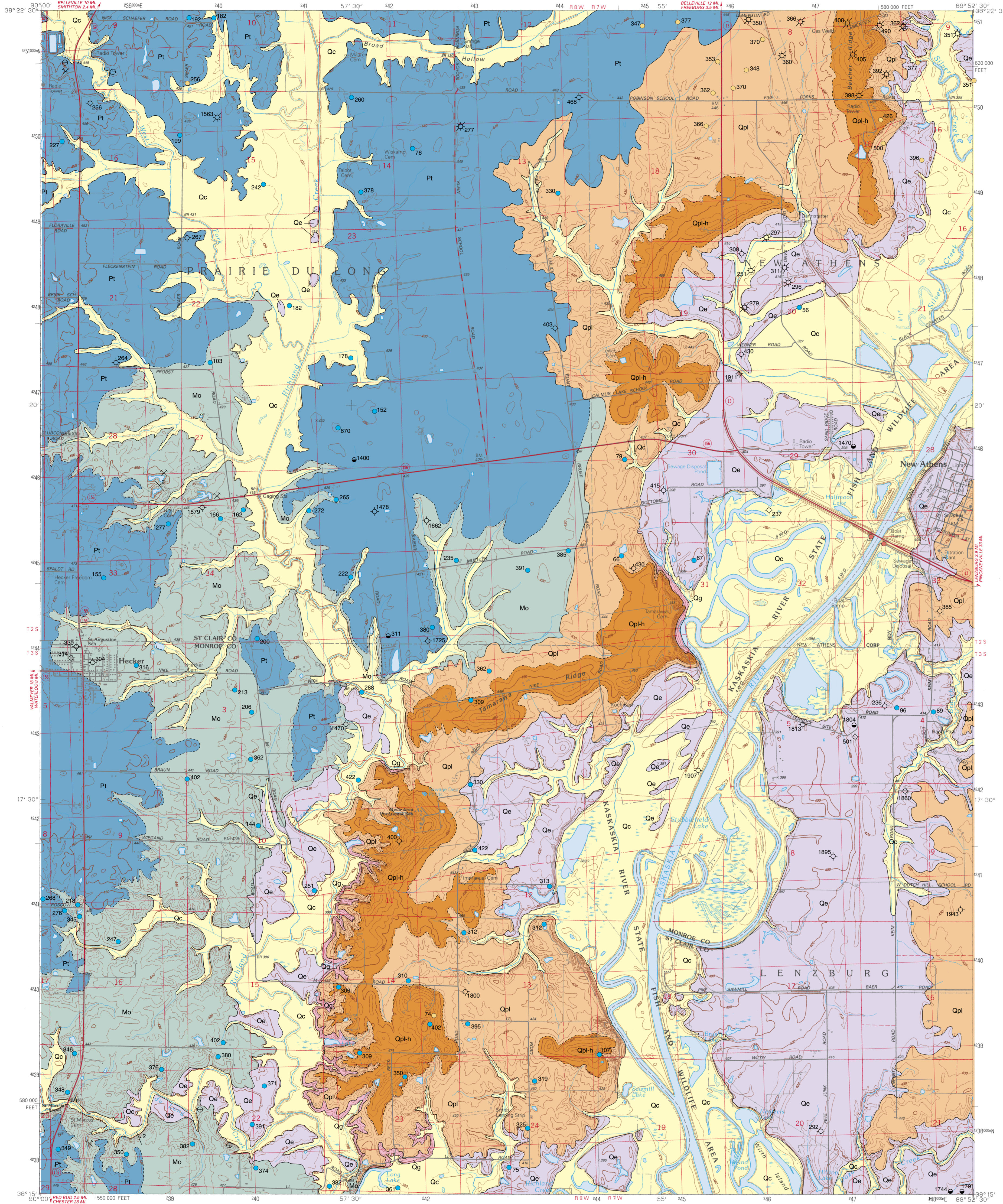
# GEOLOGY OF NEW ATHENS WEST QUADRANGLE

## MONROE AND ST. CLAIR COUNTIES, ILLINOIS

Department of Natural Resources  
ILLINOIS STATE GEOLOGICAL SURVEY  
William W. Shilts, Chief

Illinois Preliminary Geologic Map  
IPGM New Athens West-G

Joseph A. Devera and Russell J. Jacobson  
2004



### EXPLANATION

Qc	Cahokia Formation	Holocene
Unconformity		
Qe	Equality Formation	Pleistocene
Qpl-h	Pearl Formation Hagarstown Member	
Qpl	Pearl Formation	
Qg	Glasford Formation	Desmoinesian
Pt	Tradewater Formation	
Mo	Okaw Formation	Chesterian

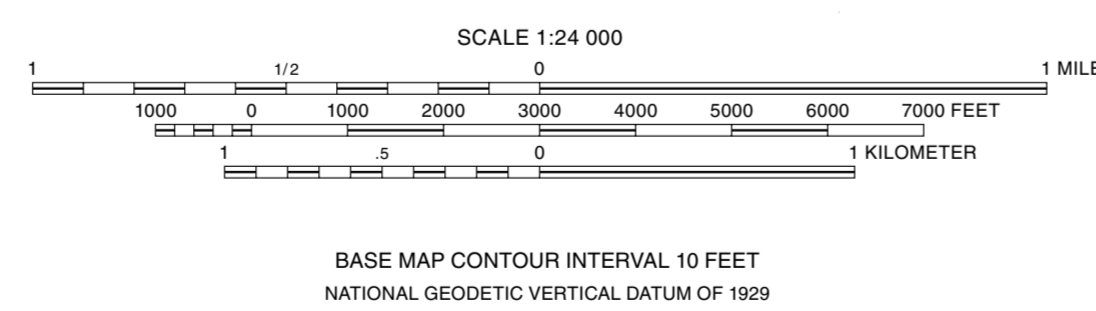
### Symbols

40	Strike and dip of bedding; number indicates degree of dip
X	Abandoned quarry
⊕	Horizontal bedding
<b>Drill Holes</b> from which subsurface data was obtained	
○	Dry oil well
●	Show of oil
⊗	Abandoned gas well
⊙	Stratigraphic boring
●	Water well
●	Engineering boring
Note: Numbers indicate total depth of boring in feet.	
<b>Line Symbols</b> dashed where inferred, dotted where concealed	
—	Contact

Base map compiled by Illinois State Geological Survey from digital data provided by the United States Geological Survey. Topography compiled from imagery dated 1986. Field checked 1988. Map edited 1990.

North American Datum of 1983 (NAD 83)  
Projection: Transverse Mercator  
10,000-foot ticks: Illinois State Plane Coordinate system, west zone (Transverse Mercator)  
1,000-meter ticks: Universal Transverse Mercator grid system, zone 16

Recommended citation:  
Devera, J. A., and R. J. Jacobson, 2004, Geology of New Athens West Quadrangle, Monroe and St. Clair Counties, Illinois: Illinois State Geological Survey, Illinois Preliminary Geologic Map, IPGM New Athens West-G, 1:24,000.



Released by the authority of the State of Illinois: 2004

Geology based on fieldwork by J. A. Devera and R. J. Jacobson, 2003-2004.

Digital cartography by L. Verhelst and J. Domier, Illinois State Geological Survey.

This Illinois Preliminary Geologic Map (IPGM) is a lightly edited product, subject to less scientific and cartographic review than our Illinois Geological Quadrangle (IGQ) series. It will not necessarily correspond to the format of IGQ series maps, or to those of other IPGM series maps. Whether or when this map will be upgraded depends on the resources and priorities of the ISGS.

The Illinois State Geological Survey, the Illinois Department of Natural Resources, and the State of Illinois make no guarantee, expressed or implied, regarding the correctness of the interpretations presented in this document and accept no liability for the consequences of decisions made by others on the basis of the information presented here. The geologic interpretations are based on data that may vary with respect to accuracy of geographic location, the type and quantity of data available at each location, and the scientific/technical qualifications of the data sources. Maps or cross sections in this document are not meant to be enlarged.



For more information contact:  
Illinois State Geological Survey  
615 East Peabody Drive  
Champaign, Illinois 61820-6964  
(217) 244-2414  
http://www.isgs.uiuc.edu



1	2	3
4	5	
6	7	8

ADJOINING QUADRANGLES  
1 Millstadt  
2 Freeburg  
3 Mascoutah  
4 Piasa  
5 New Athens East  
6 Ames  
7 Red Bud  
8 Baldwin

APPROXIMATE MEAN DECLINATION, 2004

ROAD CLASSIFICATION	
Primary highway, hard surface	Light-duty road, hard or improved surface
Secondary highway, hard surface	Unimproved road
64 Interstate Route	61 U.S. Route
	98 State Route