

Article

A Novel Machine Learning Method for Estimating Biomass of Grass Swards Using a Photogrammetric Canopy Height Model, Images and Vegetation Indices Captured by a Drone

Niko Viljanen ^{1,*} , Eija Honkavaara ¹ , Roope Näsi ¹ , Teemu Hakala ¹, Oiva Niemeläinen ² and Jere Kaivosoja ² 

¹ Department of Remote Sensing and Photogrammetry, Finnish Geospatial Research Institute, Geodeetinrinne 2, 02430 Masala, Finland; eija.honkavaara@nls.fi (E.H.); roope.nasi@nls.fi (R.N.); teemu.hakala@nls.fi (T.H.)

² Green Technology Unit, Natural Resources Institute Finland (LUKE), Vakolantie 55, 03400 Vihti, Finland; oiva.niemelainen@luke.fi (O.N.); jere.kaivosoja@luke.fi (J.K.)

* Correspondence: niko.viljanen@nls.fi; Tel.: +35-850-400-9527

Received: 29 March 2018; Accepted: 14 May 2018; Published: 17 May 2018



Abstract: Silage is the main feed in milk and ruminant meat production in Northern Europe. Novel drone-based remote sensing technology could be utilized in many phases of silage production, but advanced methods of utilizing these data are still developing. Grass swards are harvested three times in season, and fertilizer is applied similarly three times—once for each harvest when aiming at maximum yields. Timely information of the yield is thus necessary several times in a season for making decisions on harvesting time and rate of fertilizer application. Our objective was to develop and assess a novel machine learning technique for the estimation of canopy height and biomass of grass swards utilizing multispectral photogrammetric camera data. Variation in the studied crop stand was generated using six different nitrogen fertilizer levels and four harvesting dates. The sward was a timothy-meadow fescue mixture dominated by timothy. We extracted various features from the remote sensing data by combining an ultra-high resolution photogrammetric canopy height model (CHM) with a pixel size of 1.0 cm and red, green, blue (RGB) and near-infrared range intensity values and different vegetation indices (VI) extracted from orthophoto mosaics. We compared the performance of multiple linear regression (MLR) and a Random Forest estimator (RF) with different combinations of the CHM, RGB and VI features. The best estimation results with both methods were obtained by combining CHM and VI features and all three feature classes (CHM, RGB and VI features). Both estimators provided equally accurate results. The Pearson correlation coefficients (PCC) and Root Mean Square Errors (RMSEs) of the estimations were at best 0.98 and 0.34 t/ha (12.70%), respectively, for the dry matter yield (DMY) and 0.98 and 1.22 t/ha (11.05%), respectively, for the fresh yield (FY) estimations. Our assessment of the sensitivity of the method with respect to different development stages and different amounts of biomass showed that the use of the machine learning technique that integrated multiple features improved the results in comparison to the simple linear regressions. These results were extremely promising, showing that the proposed multispectral photogrammetric approach can provide accurate biomass estimates of grass swards, and could be developed as a low-cost tool for practical farming applications.

Keywords: photogrammetry; drone; unmanned aerial vehicle; digital surface model; canopy height model; grass sward; biomass; machine learning; Random Forest; multiple linear regression

1. Introduction

Silage is the main feed in ruminant meat and milk production in Northern Europe. In Finland, 23% of the cultivated area is used for silage production, which is approximately 513,500 ha. In the silage production, grass swards are harvested three times each season, and fertilizer is applied for each harvest. Timely information of the yield quality and quantity would be highly valuable for decision-making on harvesting time and rate of fertilizer application for the next harvest. In grass yield, the quantity increases rapidly in the spring growth. Simultaneously the quality decreases, especially in grass digestibility. Harvesting time optimization entails a balance between the highest possible yield quantity and an adequately high digestibility for feeding.

The grass biomass has a strong correlation with canopy heights [1–3]. Therefore, the grass height is a fundamental parameter of interest when concerning precision management of grazing and silage harvesting. Accurate estimates of grass biophysical variables are important for monitoring vegetation growth and for analysing important physiological parameters during the grass growth cycle [4]. In practical farming—particularly in rotational grazing management—physical measurements of grass height and biomass estimation are usually done by using devices such as the rising plate meter, capacitance meter and meter stick [5–7]. However, these in situ physical measurements are laborious. Furthermore, it can be difficult to characterize the spatial variability due to vegetation growth characteristics by the physical sample collection, which limits their ability to provide robust estimates. Several factors cause variation in the grass swards. In particular, swards are composed of multiple species, each having different growing characteristics and variability in soil conditions and topography within the field [8].

Remote sensing methods, including digital imaging, photogrammetry, hyperspectral imaging, laser scanning and various sensor combinations can work as high-performance alternatives to physical measurement methods. Remote sensing offers a potential for rapid and automatic measurement of large areas with high spatial resolution. Several studies have investigated the use of remote sensing techniques to calculate plant heights for estimating crop parameters. Most of those have been using terrestrial laser scanning [9,10] and mobile laser scanning [8] due to the requirements of high spatial resolution. However, photogrammetric imaging using unmanned aircraft vehicles (UAV or a drone), structure from motion (SfM) techniques and dense image matching are becoming a very interesting tool to collect 3D information of objects due their low cost, efficiency and flexibility. These methods have already been investigated in several studies especially related to grass-to shrub transition zone [3], crops [11], winter barley [12,13], maize [14] and moss beds [15,16]. Several studies have also utilized vegetation indices (VI) based on multispectral data [17–20] or hyperspectral data [21–23] to estimate the biomass and canopy height of crops.

Additionally, some studies have integrated drone-based 3D and spectral data to estimate crop parameters. Yue et al. [24] combined crop height information and spectral data from the Cubert UHD185 “Firefly” hyperspectral snapshot sensor (Cubert GmbH, Ulm, Germany) to estimate the biomass of winter wheat, and Bendig et al. [25] combined drone-based 3D data with ground-measured spectrometer data for biomass monitoring of barley. Many ground-based combinations of spectral and 3D data have also been utilized [26–28]. However, only a few studies have integrated drone-based 3D and spectral data for the estimation of grass quality and quantity. Bareth et al. [29] studied the possibility to utilize drone-based canopy height models (CHMs) in the estimation of grass height and biomass using linear regression. Their results showed that the photogrammetric CHM gave accurate height estimates in the later phases of growth but were not accurate at the beginning of the growth when the canopy was still sparse. The VIs had the opposite performance; they provided good estimates in the early phases of growth but saturated at the later stages of growth with increasing plant height, which is also a known behaviour from earlier studies [30,31]. Based on these findings, Bareth et al. [29] developed a Grassland Index (GrassI) which combines the advantages of the CHM and VIs based on RGB to provide accurate estimates for the entire growth season. Possoch et al. [32] utilized a low-cost RGB drone system to calculate the CHM and RGB VIs for estimating biomass for

grassland. Their results indicated that the photogrammetric CHM gave the best results for the dry matter yield (DMY) when using linear regression models.

CHMs for the biomass estimation can be created in different ways [1,2]. Pittman et al. [8] recommended measuring the digital terrain model (DTM) and digital surface model (DSM) using remote sensing technologies, such as ultrasonic or laser scanner. They studied the estimation of the biomass and canopy height of bermudagrass, alfalfa and the mix (which contained a mixture of both bermudagrass and alfalfa) using a ground-based mobile platform—a golf cart with ultrasonic, laser and spectral sensors. Their comparison of the performance of single-sensor and a combination of three sensors indicated that the use of multisensory systems improved the biomass estimation accuracy of grasslands.

Several studies have evaluated different regression techniques for biomass estimation. Marabel et al. [33] investigated biomass estimation of grasslands using field spectrometer data. They evaluated performance of the support vector machine (SVM) and Partial Least Squares Regression (PLSR). The most accurate model to predict the total biomass was obtained using the PLSR and spectral bands between 916–1120 nm and 1079–1297 nm. Yue et al. [34] compared eight different regression techniques for winter wheat biomass using near-surface spectroscopy. The results of the study showed that PLSR and multivariable linear regression were most suitable when high-accuracy and stable estimates are required from relatively few samples. In addition, Random Forest (RF) introduced by Breiman et al. [35] is highly robust against noise and is best suited to deal with repeated observations involving remote-sensing data that are usually affected by atmosphere, clouds, observation times and sensor noise [34]. Additionally, RF's advantages over other methods, such as multiple linear regression (MLR) and Artificial Neural Network (ANN), are high prediction accuracy, feature selection is unnecessary and it is less sensitive to overfitting [36–38]. RF has shown competitive accuracy compared to other methods estimating the biomass of forests [39–41] and agriculture [14,42,43]. The majority of biomass estimation studies have utilized other estimators such as linear models and nearest neighbour approaches [3,41]. Most of the drone-based biomass estimation studies have been carried out using linear models based on only a few features [18,23,25,28]. An RF was used by Liu et al. [43] to estimate the level of rice seeds, by Li et al. [14] to estimate the biomass of maize, and by Turner et al. [16] to predict Antarctic moss health. However, no studies have performed an RF to determine the biomass of grasslands.

Our objective was to develop and assess a machine learning technique for the estimation of canopy height and biomass of grass swards based on a drone-based multispectral photogrammetric approach. In particular, our objective was to study the potential of ultra-high resolution canopy height models (CHMs) and vegetation indices (VIs) extracted from red, green and blue (RGB) and colour infrared (CIR) images. To generate high variation information to study swards, the Natural Resources Institute of Finland (LUKE) established in the Jokioinen test site an experiment using six different nitrogen fertilizer application rates and four harvesting dates. We first evaluated the feasibility of CHMs and VIs separately in the height and biomass estimation by using a simple linear regression technique. We then evaluated the performance of the combination of various height features and VIs in grass quantity estimation using machine learning techniques based on MLR and RF.

2. Materials and Methods

2.1. Study Area and Reference Measurements

The experiment was conducted at the LUKE research farm, which is located in the municipality of Jokioinen in southwest Finland (approximately 60°48' N, 23°30' E) (Figure 1). The experiment was established on a second-year silage production field. The grass sward was established in 2015 in spring barley as a companion crop with a timothy/meadow fescue (*Phleum pratense* and *Festuca pratensis*) seed mixture at a 25 kg ha⁻¹ sowing rate (65% timothy and 35% meadow fescue on a weight basis). The row width was 12.5 cm. In 2016, the field was managed as a silage production sward.

A uniform and even site of the field was selected for the experiment. The soil type at the test site was clay, and the soil fertility values were as follows: pH 6.2, 377 mg K L⁻¹ soil, 6.6 mg P L⁻¹ soil, 1101 mg Mg L⁻¹ soil, and 2580 mg Ca L⁻¹ soil. The size of the experimental area was approximately 50 m by 20 m. The experimental setup was a split plot design with four replicates. The fertilizer treatment was in the 24 main plots (plot size 12 m × 3 m), and the harvesting time was in the sub-plot. The experiment had a total of 96 plots. Four replicates, 6 nitrogen fertilizer levels (0 kg/ha, 50 kg/ha, 75 kg/ha, 100 kg/ha, 125 kg/ha and 150 kg/ha), and four harvesting/measuring dates (6 June, 15 June, 19 June and 28 June) were used in the primary growth. The fertilizer application was carried out on 10 May 2017 by an experimental surface fertilizer broadcaster (tailor-made model) with a working width of 1.5 m. To maintain the sward free of weeds, a control spraying by Starane XL herbicide (active ingredients: 100 g L⁻¹ fluroxypyr + 2.5 g L⁻¹ florasulam) at the rate of 1.5 L ha⁻¹ was carried out on 24 May by the farm scale sprayer Hardi twin stream 363 MA 1200 EEEEC/5 15 HAL with a 12 m spraying boom (HARDI INTERNATIONAL A/S, Norre Alslev, Denmark). The borders between the main plots (fertilizer treatments) were regularly cut by a lawn mower to make the harvesting easy. The net size of the harvested and drone-measured plot was 1.5 m by approximately 2.6 m. After the harvest, the actual length of each harvested plot was measured, and the hectare yield was adjusted accordingly.

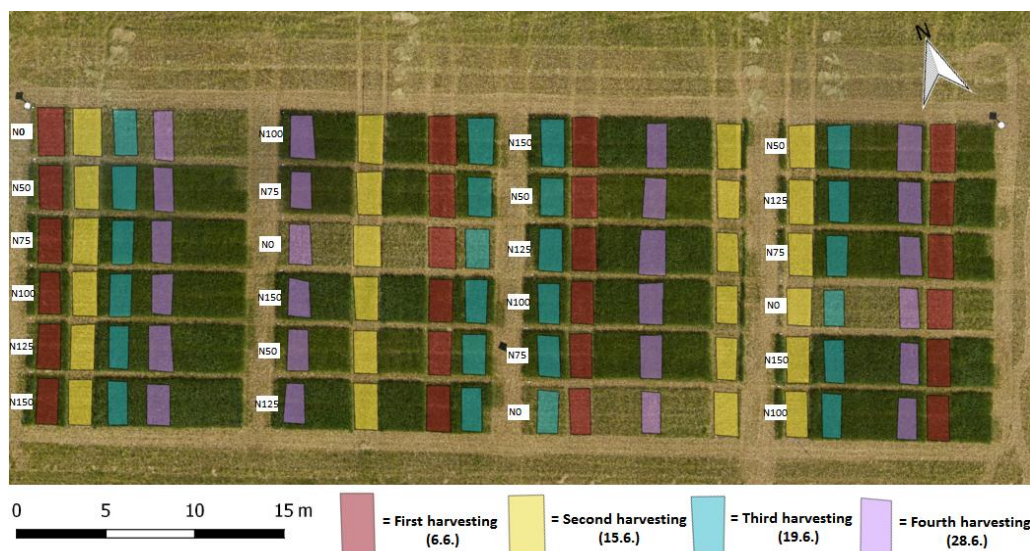


Figure 1. Orthophoto mosaic from the Jokioinen test site from 15 June. In the first replicate (the leftmost column), the fertilizer rates were from 0 to 150 kg/ha (indicated with N0 to N150) in order from top to bottom in this photo. Nitrogen fertilizer application rates were randomized in Replicates 1–4 (in Columns 2–4) as well as the location of the harvesting date for reference harvests.

Harvesting was carried out by a Haldrup forage plot harvester (Model GR, HALDRUP GmbH, Ilshofen, Germany). The width of the cutting bar was 1.5 m. The stubble height was from 6 cm to 7 cm. The primary growth was harvested on four dates in June: 6 June was at the very early developmental stage for silage harvesting; 15 June was just prior and 19 June was very close to the targeted silage production developmental stage, and heading was just starting in the swards; and 28 June was clearly after the desired silage harvesting stage. The fresh yield (FY) was measured by the Haldrup forage plot harvester. However, on the first harvest date, due to operation failure in Haldrup scale, the plot yield was collected and measured by weight indoors. A sample was taken from each plot for dry matter yield (DMY) and quality analyses. On the first harvest date, the whole harvest was taken, and, on the later harvest dates, a 1 kg FY sample was taken from the harvest. The samples were chopped into 3–4 cm long pieces by a Wintersteiger (Model Hege 44, Wintersteiger AG, Ried, Austria) sample chopper, and the DMY was determined after 17 h drying at 100 °C in forced air drying ovens.

On the day before each harvest, the reference canopy heights (H_{ref}) were measured with a height stick and with a height plate on the first date.

Idea of the experimental setup was to generate great variation of DMY, FY and nitrogen amount in the study sward. General guidelines for nitrogen fertilizer application rate is 100 kg/ha for the primary growth in clay soil for commercial grass silage production, and harvesting is targeted at a D-value (organic matter digestibility in dry matter) of around 690 g kg⁻¹ which occurred on this field in Jokioinen around 19 June in 2017.

The start of the growing season was late in 2017 (5 May), and the early summer was cool. The mean monthly temperature was 8.9 °C in May and 12.9 °C in June 2017, while long-term averages (1980–2010) are 9.8 °C and 14.0 °C, respectively. The rainfall figures were 13 mm and 101 mm in May and June 2017, and 40 mm and 63 mm as long-term averages (1980–2010), respectively. The development of grass sward in the primary growth in Finland depends on the accumulated temperature sum. The accumulated effective temperature (above + 5 °C) on the harvest dates were the following. 6 June: 160 (long-term average for the date (LTA): 224); 15 June: 241 (LTA: 300); 19 June: 289 (LTA: 336); and 28 June: 347 (LTA: 425).

The sward with zero nitrogen application was sparse and weak particularly on the first observation dates. The highest nitrogen application rates—125 and 150 kg ha⁻¹—produced a dense sward in mid-June which was susceptible to lodging, and this affected the growth of the stand. In addition, the highest nitrogen application rates seemed to increase the share of meadow fescue in the sward, particularly on the latest harvesting dates. Otherwise, the swards were predominantly of timothy.

2.2. Reference Field Data and Biomass Sampling

Devices such as the rising plate meter, capacitance meter, and meter stick are examples of devices used for physical measurements of vegetation height and biomass estimation [5,6]. We used the height stick to measure the H_{ref} of the grassplots on all the dates (Figure 2a). Three measurements were taken per plot, and the mean value of the three measurements was used. Height stick measurements were carried out according to Finnish guidelines for producing an estimate of biomass for a grass sward parcel [44]. In that method, for each measurement a cluster of grass tillers and leaves is straightened up and the average height of that cluster is measured with a height stick. In this method, individual tillers that are higher than average are ignored in the measurement.



Figure 2. In situ measurements of grass height by: (a) height stick; and (b) plate meter.

We compared the plate meter and the height stick methods in the first dataset. We made five measurements in each fertilization level plots (12 m × 1.5 m) with the plate meter and calculated average height for each plot. The plate meter's bottom stick is placed on ground level but without penetrating the ground, and the plate part free falls down to the sward. While the plate part is going down, it compresses the sward down a few centimetres (Figure 2b). The plate meter works well when the sward is dense and has a height of around 20–30 cm. On the other hand, the plate meter struggles to work when the sward is high and has no flat top structure or when the grass sward is sparse and its

growth is poor and non-uniform. In this study, sward heights were 60–70 cm during the last harvesting dates, and the plots without nitrogen input were sparse and had low height, which was not ideal for the plate meter. Additionally, previous studies have received worse correlations with biomass estimation with a plate meter than the height stick [8]. The comparisons showed that the height stick provided slightly higher height values than the plate meter; the average difference was 1.46 cm and the RMSE was 1.82 cm.

2.3. Remote Sensing Data Acquisition

The Finnish Geospatial Research Institute's (FGI's) drone, a remotely piloted aircraft system (RPAS), was utilized for collecting the remote sensing datasets. The frame of the FGI drone was the Gryphon Dynamics quadcopter with detachable arms, and it was equipped with Pixhawk autopilot (Computer Vision and Geometry Lab, Zurich, Switzerland) with ArduPilot APM Copter (Version 3.4, Open-source, Raleigh, NC, USA) firmware [45]. Endurance of the drone is approximately 25 min with a maximum payload of 2.5 kg. The drone was equipped with a positioning system consisting of an NV08C-CSM L1 Global Navigation Satellite System (GNSS) receiver (NVS Navigation Technologies Ltd., Montlingen, Switzerland), a Vectornav VN-200 IMU (VectorNav Technologies, Dallas, TX, USA) and a Raspberry Pi single-board computer (Raspberry Pi Foundation, Cambridge, United Kingdom). The drone was carrying an RGB digital camera, a Sony A7R (Sony Corporation, Minato, Tokyo, Japan) equipped with a Sony FE 35 mm f/2.8 ZA Carl Zeiss Sonnar T* lens (Sony Corporation, Minato, Tokyo, Japan). Sony A7R has a 35.90 mm by 24.00 mm complementary metal-oxide semiconductor (CMOS) sensor with 36.4 megapixels. The size of raw images is 7360 pixels × 4910 pixels. The camera is triggered to capture images in two-second intervals, and a GNSS receiver is used to record the exact time of each triggering pulse. Furthermore, we calculated Post Processed Kinematic (PPK) GNSS positions for each camera using National Land Survey of Finland (NLS) RINEX service, which offers observation data from FinnRef stations [46], in RTKlib (RTKlib version 2.4.2, Open-source, Raleigh, NC, USA) software rtkpost tool [47]. A hyperspectral camera based on a tuneable Fabry P erot interferometer (FPI) operating in the visible to near-infrared spectral range (500–900 nm) (VTT Technical Research Centre of Finland Ltd, Espoo, Finland) [22] was used to collect the spectral data cubes for each flight. The FPI camera is a lightweight, frame format hyperspectral imager operating in the time-sequential principle collecting spectral bands with 648 by 1024 pixels. In this study, we used it in a multispectral mode to provide multispectral bands in red (central wavelength $L_0 = 669.0$ nm; full width at half maximum (FWHM) of 27.0 nm) and the near infrared (NIR; $L_0 = 804.1$ nm, FWHM: 28.3 nm) spectral range.

The flight parameters and conditions are introduced in Table 1. We used flying heights of 30 m and 50 m and a flying speed of 2 m/s. The ground sampling distances (GSD) were 3.9 mm and 6.4 mm for the RGB images and 30 mm and 50 mm for the FPI images with the flying heights of 30 m and 50 m, respectively. These settings resulted in 84–87% and 65–81% forward and side overlaps, respectively, for the RGB and FPI images, which are suitable for the photogrammetric processing of these scenes. In the resulting photogrammetric blocks, the area of interest was captured in the block J2_F1 in more than six images and in other blocks in more than nine images. The reason for the lower numbers of overlapping images in the block J2_F1 was triggering problems of the RGB-camera, however, as the overlaps were appropriate, we decided to use this data.

Five permanent ground reference points were targeted in the corners and centre of the block to be used as the ground control points (GCPs) and checkpoints (CP). The targets were black-painted plywood boards of size 0.5 m by 0.5 m with a white painted circle with a diameter of 0.3 m and they were mounted on wooden pillars. The reference points were measured with the Trimble R10 RTK DGNSS (Trimble Inc., Sunnyvale, CA, USA) with an accuracy within 0.03 m horizontally and 0.04 m vertically [48,49]. Additionally, three reflectance panels with nominal reflectance of 0.03, 0.09 and 0.50 were installed in the area to enable transformation of the image digital number values to reflectance.

Table 1. Datasets with their collection date, time, cloud conditions, sun azimuth, and solar elevation. GNSS: global navigation satellite system; FH: flight height.

Dataset	Date	Time (GNSS)	Cloud Conditions	Sun Azimuth (°)	Solar Elevation (°)	FH (m)
J1_F1	6 June	11:49 to 11:59	Varying	212.51	48.80	50
J1_F2	6 June	11:59 to 12:08	Varying	215.83	48.12	30
J2_F1	15 June	08:59 to 09:14	Sunny	150.21	49.96	30
J3_F1	19 June	9:09 to 09:26	Varying	153.34	50.58	50
J4_F1	28 June	07:13 to 07:29	Sunny	117.47	40.45	50

2.4. Remote Sensing Data Processing

Agisoft Photoscan Professional (version 1.3.4, Agisoft, St. Petersburg, Russia) software was used for the photogrammetric processing [50]. We followed similar processing workflow in Photoscan as introduced in previous studies by several authors [3,51–53]. In the first stage, Photoscan uses SFM to determine the interior (IOP) and exterior orientation parameters (EOP) for each image and to calculate a sparse point cloud. We used the self-calibrating option and included the focal length, principal point coordinates, and radial and tangential lens distortions. In the orientation processing, the high quality setting was selected with 40,000 key points and 4000 tie points per image. In addition, we used PPK processed GNSS coordinates, for each image to preselect image pairs for the orientation process. The reference points (GCPs) were measured on the images manually; each of the GCPs were measured in ten or more images. We used the accuracy settings of ± 0.005 m for the GCPs and ± 5 m for the camera positions coordinates of the images. All IOPs, EOPs and point coordinates were optimized using “optimize camera alignment” tool in Photoscan [54]. After the optimization, an automatic outlier removal was performed using the gradual selection tools of the software based on the re-projection error and reconstruction uncertainty. Additionally, some points were manually removed from the sparse point cloud, particularly points underground and up in the air. Overall, approximately 10% of the worst points were removed during the gradual selection and manual point removing for each dataset. Then the final optimization of the sparse point cloud, IOPs and EOPs was carried out. Next, dense point cloud generation was carried out using the high quality parameter and mild depth filtering. According to our testings and previous studies [3,51–53], these parameters are suitable for flat areas such as grass fields to provide accurate results. The coordinate system in the processing was the ETRS89-TM35FIN.

Even though all datasets were processed using the same parameters in Photoscan, small differences in the flying height and overlaps between images resulted in slightly different processing results (Table 2). In particular, the lower flying height resulted in a smaller GSD and a higher point density. Additionally, the re-projection errors were smaller for the 30 m flights (0.534–0.589) than for the 50 m flights (0.783–1.25). Root Mean Square Errors (RMSEs) of block adjustments were calculated using a leave-one-out cross-validation (LOOCV) method. The LOOCV was carried out by performing the block adjustment five times by using four reference points as GCPs and one reference point as an independent CP. The error between the adjusted coordinate and the reference coordinate of the CP was calculated in each adjustment and finally the LOOCV RMSE was calculated using errors of each CP [55]. The RMSEs were 0.5–2.4 cm in the X- and Y-coordinates, and 1.0–4.8 cm in height. These results indicated that the block adjustments were of good accuracy and the blocks were not deformed. The flights from a 30 m flying height provided slightly better 3D RMSE (2.7–2.9 cm) than the 50 m flying height (2.8–5.0 cm).

Table 2. Dataset parameters: Date, FH (Flight Height), N Images (Number of Images), re-projection error, point density, and RMSE (Root Mean Square Error) of X, Y and Z coordinates and 3D.

Dataset	Date	FH	N	Re-Projection	Point Density	RMSE (cm)			
		(m)	Images	Error (pix)	Points/m ²	X	Y	Z	3D
J1_F1	6 June	50	156	0.783	5920	1.1	0.6	4.8	5.0
J1_F2	6 June	30	171	0.534	14,600	1.0	1.1	2.5	2.9
J2_F1	15 June	30	174	0.589	17,100	0.5	0.7	2.6	2.7
J3_F1	19 June	50	320	1.12	5860	1.0	2.4	1.0	2.8
J4_F1	28 June	50	350	1.25	5230	0.6	0.9	3.7	3.9

The RGB orthomosaics were calculated with a GSD of 1.0 cm in the Photoscan using the orthomosaic blending mode. The orthomosaics of the FPI red and NIR bands were calculated with a GSD of 5 cm using FGI in-house C++ software [22]. In this case, the orthomosaics were created using the most nadir image parts, and no blending was performed. The orthomosaic DNs were normalized to reflectance values using the empirical line method [56] using the three reflectance panels. We used exponential function for the RGB dataset and linear function for the FPI dataset.

We used both automatic and manual approaches to create the DTM in the Photoscan. The DTM_{auto} was generated using Photoscan's automatic ground point classification procedure. In this procedure, the dense cloud was first divided into cells of a certain size, and the lowest point of each cell was detected. The first approximation of the DTM was calculated using these points. After that, all points of the dense cloud were checked, and a new point was added to the ground class if the point was within a selected distance from the terrain model and if the angle between approximation of the DTM and the line to connect the new point on it were less than the selected angle [3,52,54]. Based on our preliminary testing we selected starting parameters for automatic classification of ground points and iteratively selected the most suitable parameters for the ecosystem of this study by visually comparing the classification results to the RGB orthomosaics. For all the datasets, a cell size of 3 m, a maximum angle of 0.5 degree and a maximum distance of 2.0 cm were selected. These parameters are slightly different from the parameters selected by other authors in different ecosystems, for example, Cunliffe et al. [3] used for grass-dominated-shrubs ecosystems the cell-size of 3 m, maximum angle of 3° and maximum distance of 5.0 cm, and Méndez-Barroso et al. [57] used for classifying ground points in medium density forest sites the cell-size of 10 m, maximum angle of 3° and maximum distance of 10 cm. The DTM_{manual} was generated using Photoscan's free-form-selection tool to manually select and classify ground points. The classified ground points were used to interpolate DTM for the whole area. The DSM, DTM_{manual} and DTM_{auto} were exported as TIFF images with a 1.0 cm resolution. Finally, we calculated the CHM for both DTM_{manual} and DTM_{auto} by subtracting DTM from DSM for each dataset, using QGIS (version 2.18.14, Open-source, Raleigh, NC, USA) software.

2.5. Feature Extraction from the Remote Sensing Datasets

2.5.1. Height Features

We created shapefiles for each plot using a margin of 0.25 m to the plot border to exclude possible border effects. Then, using the CHM and the border shapefile, we calculated the height features, including average height (H_{mean}), median height (H_{median}), minimum height (H_{min}), maximum height (H_{max}), height standard deviation (H_{std}), height 50% percentile (H_{p50}), height 70% percentile (H_{p70}), height 80% percentile (H_{p80}) and height 90% percentile (H_{p90}) (Table 3), for each plot using Matlab (version 2016b, MathWorks, Natick, MA, USA) software.

Table 3. Definitions and formulas of CHM metrics in this study. h_i is the height of the i th height value, N is the total number of height values in the plot, Z is the value from the standard normal distribution for the desired percentile (1.282, the 90th percentile) and σ is the standard deviation of the variable.

Index	Name	Equation
Mean height	H_{mean}	$\frac{1}{N} \left(\sum_{i=1}^N h_i \right)$
Median height	H_{median}	$\text{median}(h_i), 1 \leq i \leq N$
Minimum height	H_{min}	$\min(h_i), 1 \leq i \leq N$
Maximum height	H_{max}	$\max(h_i), 1 \leq i \leq N$
Standard deviation height	H_{std}	$\sqrt{\frac{\sum_{i=1}^N (h_i - \frac{1}{N} \sum_{i=1}^N h_i)^2}{N-1}}$
90th percentile	H_{p90}	$\frac{1}{N} \sum_{i=1}^N h_i + Z\sigma$

2.5.2. Vegetation Indices

We calculated the VIs from the orthomosaics (and, in some cases, also utilizing the CHM) using QGIS (version 2.18.14, Open-source, Raleigh, NC, USA) software. The polygonal shapefile of each plot was used to extract digital numbers (DN) from the red, green, blue and NIR bands and the CHM. Then mean values for each plot were calculated by “zonal statistics” implementation in QGIS. The mean values were used as input values in the VI equations shown in Table 4.

We also introduced a new VI for grass fields, the ExG + CHM. The idea of the index is similar to the GrassI-Index, which aims to compensate for the weaknesses of CHM and VIs at different growth stages of the grass [29]. The difference is that we used the ExG, while the GrassI is based on the RGBVI [25]. The ExG was introduced by Woebbecke et al. [58], and it is commonly used for vegetation greenness identification. It has been widely used in different studies, such as maize biomass estimation [14] and vegetation fraction mapping for wheat [59].

Table 4. Vegetation index (VI) abbreviation, name, formula and reference. * $g = G/(R + G + B)$, $r = R/(R + G + B)$.

VI	Name	Equation	Reference
GRVI	Green Red Vegetation Index	$\frac{R_G - R_R}{R_G + R_R}$	Tucker [60]
MGRVI	Modified Green Red Vegetation Index	$\frac{(R_G)^2 - (R_R)^2}{(R_G)^2 + (R_R)^2}$	Bendig et al. [13]
RGBVI	Red Green Blue Vegetation Index	$\frac{(R_G)^2 - (R_B \times R_R)}{(R_G)^2 + (R_B \times R_R)}$	Bendig et al. [25]
ExG	Excess Green Index	$2 \times g \times r - b$	Woebbecke et al. [58]
ExR	Excess Red Index	$1.4 \times r - b$	Meyer et al. [61]
ExGR	Excess GreenRed Index	$ExG - ExR$	Neto [62]
GrassI	Grassland Index	$RGBVI + CHM$	Bareth et al. [29]
ExG + CHM	Excess Green combined with CHM	$ExG + CHM$	Introduced here
NDVI	Normalized Difference Vegetation Index	$\frac{R_{800} - R_{670}}{R_{800} + R_{670}}$	Rouse et al. [63]
RVI	Ratio Vegetation Index	$\frac{R_{800}}{R_{670}}$	Pearson & Miller [64]
MSAVI	Modified Soil Adjusted Vegetation Index	$\frac{(2 \times R_{800} + 1 - \sqrt{2 \times R_{800} + 1})^2 - 8 \times (R_{800} - R_{670})}{2}$	Qi et al. [65]
OSAVI	Optimization of Soil Adjusted Vegetation Index	$\frac{1.16 \times (R_{800} - R_{670})}{R_{800} + R_{670} + 0.16}$	Rondeaux et al. [66]

2.6. Estimation Techniques

Estimation and validation were done using Weka software (version 3.8.1, University of Waikato, Hamilton, New Zealand). Multiple linear regression (MLR) and Random Forest (RF) were used as estimators. The validation of the estimators' performance was done using the LOOCV. In this case, the LOOCV was implemented so that one of the reference measurements was used as an independent reference measurement, and the estimator was trained with other reference measurements. The training and error calculation was repeated for each reference measurement and, afterwards, the statistics were calculated.

The MLR is a regression technique which models the relationship between two or more independent variables (which can be continuous or categorical) and a response variable by fitting a linear equation to observed data. The regression equation is used to calculate the parameters by using the least squares method, in which the sum of the squared errors is minimized. The model selection was performed using backward elimination, where the attribute with the smallest standardized coefficient was removed until no improvements were observed in the Akaike information criterion [67]. In Weka, this attribute selection method is called "M5".

RF regression, introduced by Breiman [35], is a data analysis and statistical method that is widely used in machine learning and remote sensing research [37]. It is an ensemble learning method for classification, regression and other tasks, which operates by constructing a multitude of decision trees at training time and outputting the class that is the mode of the classes (classification) or the mean prediction (regression) of the individual trees. RF has high accuracy, good tolerance to outliers, and parameter selection. Furthermore, feature selection is unnecessary, and calculations include measures of the feature in the order of importance. This makes use of the full spectral information and combination of multiple variables such as CHM and spectral information. The default parameters of Weka implementations were used, except the number of decision trees to be generated was set to 500, as suggested by Belgiu and Drăguț [37], instead of default number of 100.

We created seven different feature combinations for the MLR and RF to demonstrate different sensor setups: (1) R, G and B intensity values (RGB); (2) VI features (VI); (3) CHM features (3D); (4) VI and CHM features (VI + 3D); (5) VI and RGB features (VI + RGB); (6) CHM and RGB features (3D + RGB); and (7) VI, RGB and CHM features (VI + RGB + 3D). The new ExG + CHM index and the GrassI were included in Groups 4 and 7, which included both the VI and 3D features.

2.7. Precision Evaluation

The estimation accuracy was quantified using Pearson's Correlation Coefficients (PCC), Root Mean Square Error (RMSE) and Normalized Root Mean Square Error (NRMSE) (Table 5). The prediction RMSEs were calculated using the LOOCV method.

Table 5. Definitions and formulas of precision evaluation metrics used in this study. x is the estimated value, \bar{x} is the average of x , y is the reference value, \bar{y} is the average of reference values, and n is the number of samples.

Index	Name	Equation
Pearson correlation coefficient	PCC	$\frac{\sum_{i=1}^n (x_i - \bar{x})(y_i - \bar{y})}{\sqrt{\sum_{i=1}^n (x_i - \bar{x})^2 \sum_{i=1}^n (y_i - \bar{y})^2}}$
Root Mean Square Error	RMSE	$\sqrt{\frac{\sum_{i=1}^n (x_i - y_i)^2}{n}}$
Normalized Root Mean Square Error	NRMSE	$100\% \times \frac{RMSE}{\bar{y}}$

3. Results

3.1. Mosaics and CHMs

The RGB mosaics and the CHMs of each measurement date are presented in Figure 3; the different fertilizer levels and harvested plots for each date are presented in Figure 1. The different qualities of the sward could be visually observed in the orthophotos. Generally, the higher the nitrogen fertilizer level of the plots was, the greener the grass was on all dates. All plots were greenest in the last date (28 June) and, in the middle of growing season (15 June and 19 June), the grass was overall greener than in the first date (6 June). On the last date (28 June), all of the plots with nitrogen fertilizer levels of 125 and 150 kg/ha and half of the plots with a fertilizer level of 100 kg/ha had vigorous stands, and lodging could be observed (Figure 3g,h). The plots without nitrogen input had less growth on each date and were still undergrown during the last harvesting. The plots with nitrogen fertilizer levels of 75 kg/ha and 100 kg/ha appeared visually to have the best quality. The CHMs show that, as the nitrogen level of the plot increases, the height of the grass increases (Figure 3).

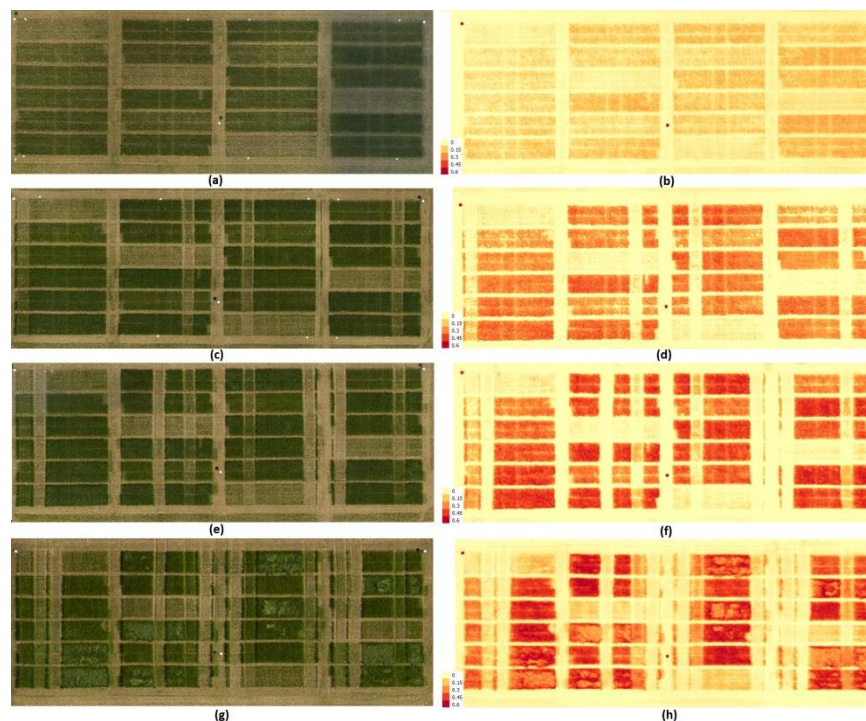


Figure 3. Orthophotos on left and CHMs (m) on right from different dates: (a,b) 6 June; (c,d) 15 June; (e,f) 19 June; and (g,h) 28 June.

3.2. Comparison of Manual and Automatic DTM Extraction Methods

We used the manual DTM from the first flight date captured from the flight altitude of 30 m (J1_F2) as the reference to the manual and automatic DTMs from other dates. The RMSEs were small, 1.05–3.28 cm, excluding the second date's automatic DTM with the RMSE of 6.80 cm (Table 6). Other than that different DTM extraction methods resulted in very similar outputs.

Linear regressions of the CHMs based on the manual and automatic DTM to the DMY and FY and the physical height measurements (H_{ref}) indicated that both methods provided good correlations. However, the manual DTM provided better PCCs of 0.92–0.94 than the automatic DTM that had PCC of 0.88–0.92 (Table 7). For all datasets, the highest PCC of 0.92–0.94 between the CHM and physical measurements were obtained using the manual DTM from the first date's dataset with a 30 m flying

height. The poorest PCC of 0.83–0.87 were obtained with the DTM from the first date with a 50 m flying height.

Table 6. Statistics of comparison of manual and semi-automatic DTM from different dates to the DTM_{30m_man}. DTM_{30m_man/auto}: DTM manually/semi-automatically extracted from the 6 June 30 m flight; DTM_{50m_man/auto}: DTM manually/semi-automatically extracted from the 6 June 50 m flight; DTM_{man}: DTM manually extracted from each date's flight; DTM_{auto}: DTM semi-automatically extracted from each date's flight. Mean: mean error; RMSE: Root Mean Square Error; median: median error; min: minimum error; max: maximum error; std: standard deviation.

Date	DTM	Mean (cm)	RMSE (cm)	Median (cm)	Min (cm)	Max (cm)	Std (cm)
6 June	DTM _{30m_auto}	0.39	1.05	0.37	−1.87	3.06	0.10
6 June	DTM _{50m_auto}	0.76	1.80	0.76	−3.37	4.07	0.16
6 June	DTM _{50m_man}	−1.08	1.75	−0.95	−4.15	1.49	0.14
15 June	DTM _{auto}	6.12	6.80	5.95	−1.15	14.81	0.30
15 June	DTM _{man}	1.12	1.70	1.21	−2.10	3.47	0.13
19 June	DTM _{auto}	3.01	3.28	2.96	0.48	6.30	0.13
19 June	DTM _{man}	2.22	2.48	2.21	−1.01	5.25	0.11
28 June	DTM _{auto}	−0.30	1.18	−0.30	−2.91	2.98	0.11
28 June	DTM _{man}	−0.86	1.38	−1.04	−3.37	1.97	0.11

Table 7. Pearson correlation coefficients of the H_{p90} and the physical dry and fresh biomass and height measurements. DTM_{30m_man}: DTM manually extracted from the 6 June 30 m flight; DTM_{50m_man}: DTM manually extracted from the 6 June 50 m flight; DTM_{man}: DTM manually extracted for each date; DTM_{auto}: DTM semi-automatically extracted for each date; DMY: dry matter yield; FY: fresh yield; and H_{ref}: reference height measurement.

DTM	DMY	FY	H _{ref}
DTM _{30m_man}	0.92	0.92	0.94
DTM _{50m_man}	0.83	0.85	0.87
DTM _{man}	0.92	0.92	0.94
DTM _{auto}	0.88	0.90	0.92

3.3. Regressions Using Individual Features

When combining all the measurement data into a single regression (Figure 4 and Appendix A, Table A4), the best performing features were the indices integrating spectral and CHM features: GrassI_{max} for the DMY (PCC: 0.94); ExG + CHM and GrassI VIs for the FY (PCC: 0.93); and GrassI VIs for the H_{ref} (PCC: 0.96). When concerning the VIs without CHM features, the best performing feature was the MSAVI, giving PCCs of 0.89 for the DMY and 0.92 for the FY; the ExG performed the best for the H_{ref} (PCC: 0.86). Overall, the performance of the VIs utilizing the NIR spectral band were better than the VIs based only on RGB spectral bands. The features based on the CHMs performed better overall than the VIs based only on spectral data; the H_{p90}, H_{p80} and H_{max} were the best CHM features with PCCs of 0.91–0.94.

In the following sections, a more detailed analysis of the CHM and VI features is performed with respect to different measurement dates and nitrogen fertilization levels.

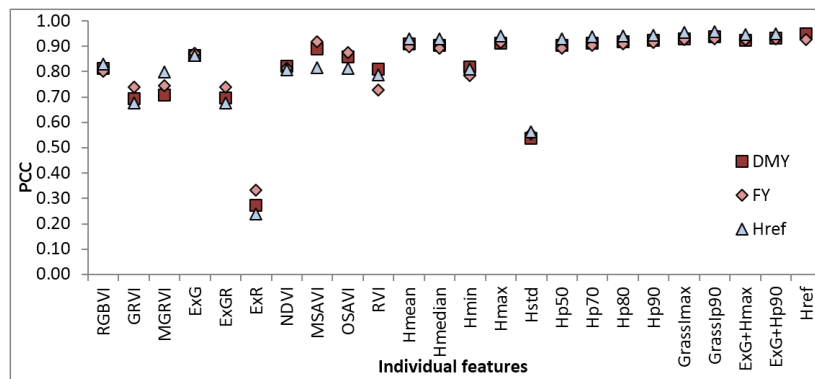


Figure 4. Pearson Correlation Coefficients (PCC) for individual vegetation index (VI) and canopy height model (CHM) features from regressions to physical measurements of the dry matter yield (DMY), fresh yield (FY) and height (H_{ref}).

3.3.1. CHM Features

We studied the regressions between the in situ physical reference measurements, including the H_{ref} , DMY and FY and the height features H_{p90} and H_{max} taken from the CHMs (Figure 5 and Table 8). We performed the analysis in different phases of the growing season and with different nitrogen fertilizer levels. The H_{p90} and H_{max} provided similar correlations to the physical measurements, even though the H_{p90} performed slightly better (Table 8 and Appendix A, Table A4). We also presented the results of H_{mean} in Table 8, but we did not analyse it further because it had generally poorer performance than the H_{p90} and the H_{max} . The following analysis is based on the H_{p90} unless otherwise mentioned.

The overall view of the dataset shows that the photogrammetric CHM provided lower height values than the field measurements by the height stick (H_{ref}) (Figure 5). The underestimation of CHMs to H_{ref} was largest on the last date; the RMSE was 16.6 cm for the H_{p90} and 12.2 cm for the H_{max} . On other days, the underestimations (RMSE) varied from 11.8 cm to 13.3 cm for the H_{p90} and from 6.4 to 7.8 cm for the H_{max} .

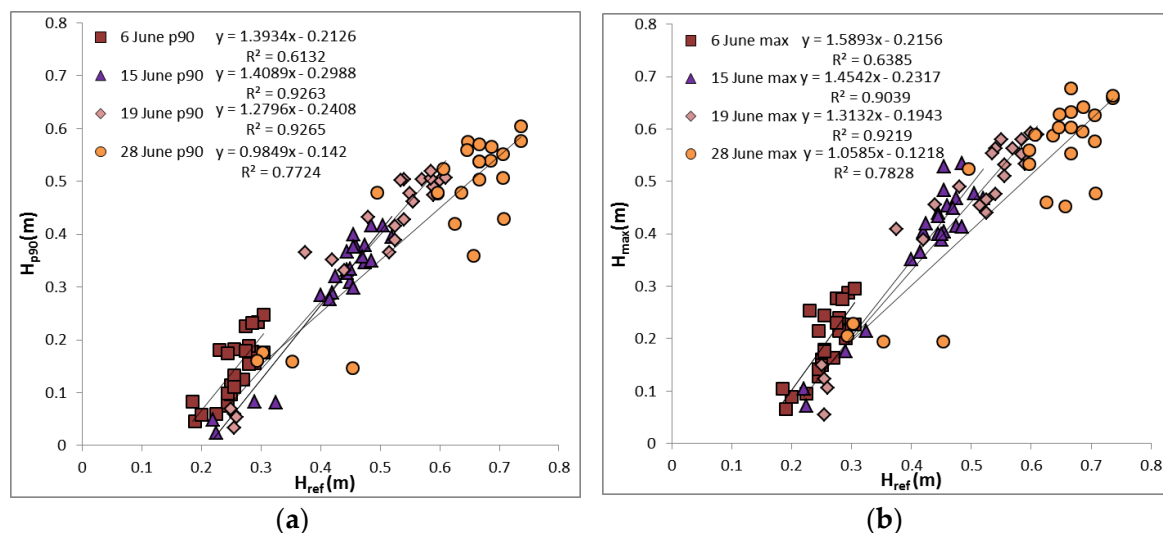


Figure 5. Simple linear regression of (a) H_{p90} and H_{ref} and (b) H_{max} and H_{ref} for different dates. H_{p90} : the 90th percentile value from the CHM; H_{max} : maximum value from the CHM; and H_{ref} : reference height measurement.

Table 8. Pearson correlation coefficients for H_{mean} , H_{max} , H_{p90} and H_{ref} to DMY and FY, and H_{mean} , H_{max} and H_{p90} to H_{ref} for different dates and different nitrogen fertilizer levels of 0–150 kg/ha. DMY: the dry matter yield; FY: fresh yield; and H_{ref} : reference height measurement.

	Date				N-Level (kg/ha)					
	June 6	June 15	June 19	June 28	0	50	75	100	125	150
DMY										
H_{mean}	0.80	0.98	0.98	0.79	0.66	0.93	0.98	0.95	0.88	0.71
H_{max}	0.87	0.93	0.97	0.85	0.85	0.86	0.97	0.93	0.89	0.77
H_{p90}	0.85	0.96	0.97	0.85	0.74	0.91	0.97	0.96	0.91	0.77
H_{ref}	0.84	0.92	0.95	0.89	0.68	0.92	0.98	0.96	0.94	0.95
FY										
H_{mean}	0.80	0.97	0.96	0.67	0.55	0.95	0.98	0.98	0.91	0.76
H_{max}	0.90	0.92	0.94	0.78	0.82	0.95	0.98	0.96	0.95	0.83
H_{p90}	0.87	0.95	0.95	0.75	0.64	0.97	0.98	0.98	0.96	0.81
H_{ref}	0.87	0.90	0.93	0.81	0.69	0.92	0.98	0.97	0.98	0.96
H_{ref}										
H_{mean}	0.72	0.94	0.96	0.84	0.62	0.90	0.99	0.95	0.84	0.83
H_{max}	0.80	0.95	0.96	0.88	0.74	0.92	0.99	0.96	0.84	0.86
H_{p90}	0.78	0.96	0.96	0.88	0.68	0.92	0.99	0.97	0.85	0.87

An analysis of the PCCs of regressions with H_{ref} on different measurement dates showed that the earliest and latest dates displayed the poorest results (Table 8). The first measurement date provided the worst PCC of 0.78. There was a low correlation because during the first assessment the grass growth had just started and grass was sparse and nonhomogeneous. Therefore, the grass did not provide a homogenous canopy, which reduced the accuracy of the CHM-based estimates. During the growing period in the second and third measurement dates, the PCCs were 0.96. In the last measurement date, when the grass was already overgrown, the PCC was 0.88. When combining all the measurement dates into a single simple regression, the PCC was 0.94 (Figure 4 and Appendix A, Table A4). The regressions of the DMY and FY measurements with respect to the CHM features were consistent with the results of the H_{ref} . The best PCCs were obtained on the second and third measurement dates (15 and 19 June) when the canopy was homogeneous; for example, the PCCs were 0.96–0.97 for the DMY and 0.95 for the FY. On the first and last dates, the PCCs were 0.85 for the DMY and 0.85 and 0.75, respectively, for the FY.

When comparing regressions with different nitrogen fertilizer levels, the fertilizer level of 0 kg/ha provided the worst correlations: the PCC was 0.68 with the H_{ref} , 0.74 with the DMY and 0.64 with the FY (Table 8). In addition, the nitrogen fertilizer level of 150 kg/ha performed poorly in the regressions. The fertilizer levels of 75 and 100 kg/ha were the closest to the ideal values. For these, the PCC was 0.96–0.98 in the regressions with the DMY and the FY, and 0.96–0.99 in the regressions with the H_{ref} . The poor sward volume and density with the 0-nitrogen fertilizer levels and the vigorous growth resulting in lodging with the nitrogen fertilizer levels of 150 kg/ha were the major reasons for the poorer results with these plots.

We also calculated regressions between the DMY and FY and the H_{ref} measured by the height stick to compare the photogrammetric and ground based measurements (Table 8). The PCCs were better with the CHM-features at the three first growth stages of the silage sward studied, whereas, in the last measurement date with overgrown and lodging grass, the H_{ref} outperformed the CHM features. In the analysis with respect to the nitrogen fertilizer level, the CHM features and the H_{ref} provided similar results with the fertilizer levels of 0–125 kg/ha; in the largest fertilizer level of 150 kg/ha the H_{ref} outperformed the CHM.

3.3.2. VI Features

We performed the sensitivity analysis with the VI features MSAVI, NDVI, ExG, ExG + H_{p90} and $GrassI_{p90}$. The results showed that both the date and the nitrogen application rate affected the correlations between the VI features and the physical measurements. However, especially the date had less impact on certain VIs than on the height features (Table 9 and Appendix A, Tables A1–A4). The best behaving VIs are presented in Table 9.

Table 9. Pearson correlation coefficients for VIs and DMY, FY and H_{ref} on different dates and different Nitrogen fertilizer levels (0–150 kg/ha). DMY: dry matter yield; FY: fresh yield; and H_{ref} : reference height measurement.

	Date				N-Level (kg/ha)					
	6 June	15 June	19 June	28 June	0	50	75	100	125	150
DMY										
MSAVI	0.95	0.94	0.96	0.95	0.62	0.91	0.90	0.91	0.87	0.94
NDVI	0.92	0.94	0.94	0.89	0.75	0.95	0.94	0.95	0.88	0.91
ExG	0.77	0.75	0.87	0.89	0.75	0.88	0.68	0.84	0.85	0.90
ExG + H_{p90}	0.91	0.94	0.96	0.90	0.80	0.92	0.96	0.96	0.93	0.88
$GrassI_{p90}$	0.88	0.91	0.96	0.90	0.87	0.89	0.95	0.94	0.92	0.89
FY										
MSAVI	0.96	0.95	0.97	0.99	0.59	0.95	0.87	0.90	0.94	0.92
NDVI	0.94	0.92	0.92	0.81	0.73	0.95	0.92	0.94	0.96	0.91
ExG	0.82	0.71	0.84	0.89	0.77	0.94	0.79	0.89	0.92	0.91
ExG + H_{p90}	0.95	0.92	0.94	0.83	0.75	0.98	0.99	0.98	0.98	0.91
$GrassI_{p90}$	0.93	0.88	0.92	0.85	0.87	0.98	0.99	0.98	0.98	0.94
H_{ref}										
MSAVI	0.85	0.94	0.93	0.81	0.71	0.89	0.89	0.85	0.88	0.87
NDVI	0.86	0.97	0.94	0.88	0.77	0.93	0.95	0.92	0.89	0.86
ExG	0.72	0.85	0.89	0.76	0.75	0.88	0.71	0.87	0.79	0.85
ExG + H_{p90}	0.84	0.97	0.96	0.89	0.76	0.93	0.99	0.97	0.88	0.94
$GrassI_{p90}$	0.82	0.96	0.96	0.89	0.80	0.93	0.98	0.97	0.89	0.95

In the analysis of regressions at different dates, the MSAVI provided in most cases the best PCCs of 0.94–0.99 for the DMY and FY, and the ExG + H_{p90} and the $GrassI_{p90}$ provided the best PCCs of 0.82–0.97 for the H_{ref} . The VIs including height features (ExG + H_{p90} and $GrassI_{p90}$) were impacted more by the date than the MSAVI and NDVI. With increased grass heights on the last measurement date (28 June), the RGB-based VIs were saturating (Table 9 and Figure 6b).

When concerning different nitrogen fertilizer levels, the VIs including height features (ExG + H_{p90} and $GrassI_{p90}$) provided the best correlations. The nitrogen fertilizer level of 0 kg/ha performed the worst compared to other dates: the PCC was 0.75–0.87 for the DMY, FY and H_{ref} at best. The nitrogen fertilizer levels of 75 and 100 kg/ha provided a PCC of 0.96–0.99 for the best VIs. Overall, the nitrogen fertilizer level had less impact on the PCCs with the best VI features (Table 9) than with the CHM features (Table 8).

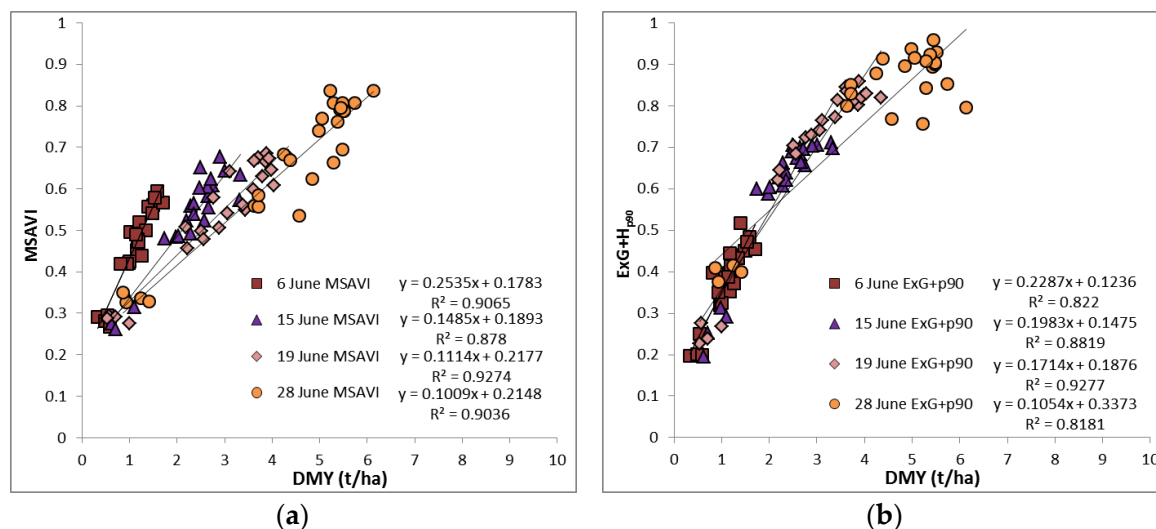


Figure 6. Simple linear regression of (a) MSAVI and dry matter yield (DMY) and (b) ExG + H_{p90} and DMY for different time series.

3.4. Biomass Estimation Using MLR and RF

We used the MLR to estimate the DMY and the FY using the RGB, the VI and the 3D features separately and in different combinations (Table 10). The best results when using the RGB, the VI or the 3D features separately were obtained with the VI features: the PCC and RMSE were 0.96 and 0.44 t/ha (16.7%) for the DMY and 0.91 and 2.94 t/ha (26.6%) for the FY, respectively. Using the 3D features provided slightly worse results: the PCC and RMSE were 0.93 and 0.59 t/ha (22.4%) for the DMY, and 0.92 and 2.79 t/ha (25.27%) for the FY, respectively. The RGB features provided clearly the worst results. Combining the 3D and VI features and all the features (3D, VI, and RGB) provided the best results; for example, in the case with all the features, the PCC and RMSE were 0.98 and 0.34 t/ha (12.7%) for the DMY and 0.98 and 1.25 t/ha (11.4%) for the FY, respectively.

Table 10. Multilinear regression (MLR) and Random Forest (RF) classification results. PCC: Correlation coefficients; RMSE: Root Mean Square Error; NRMSE: Normalized Root Mean Square Error; DMY: dry matter yield; FY: fresh yield; RGB: Red, Green and Blue spectral features; VI: Vegetation Index features; 3D: CHM 3D features.

	DMY			FY		
	PCC	RMSE (t/ha)	NRMSE (%)	PCC	RMSE (t/ha)	NRMSE (%)
MLR						
RGB	0.65	1.19	44.82	0.66	5.17	46.83
VI	0.96	0.44	16.71	0.91	2.94	26.62
3D	0.93	0.59	22.37	0.92	2.79	25.27
RGB + VI	0.96	0.45	17.03	0.94	2.47	22.34
RGB + 3D	0.97	0.40	15.22	0.95	2.14	19.41
VI + 3D	0.98	0.34	12.94	0.98	1.22	11.05
RGB + VI + 3D	0.98	0.34	12.70	0.98	1.25	11.35
RF						
RGB	0.77	1.00	37.65	0.79	4.22	38.19
VI	0.96	0.46	17.37	0.97	1.67	15.13
3D	0.93	0.56	21.16	0.93	2.58	23.34
RGB + VI	0.96	0.42	15.94	0.97	1.63	14.78
RGB + 3D	0.96	0.43	16.34	0.97	1.80	16.32
VI + 3D	0.97	0.37	14.06	0.98	1.51	13.66
RGB + VI + 3D	0.97	0.40	15.12	0.98	1.49	13.49

We performed a similar analysis using the RF estimator (Table 10). The best results when using the RGB, the VI or the 3D features individually were obtained using the VIs: the PCC and RMSE were 0.96 and 0.46 t/ha (17.4%) for the DMY and 0.97 and 1.67 t/ha (15.1%) for the FY, respectively. In addition, in the case of the RF, the 3D features provided slightly worse results than the VI features and the RGB features provided the worst results. Similar to MLR, using the combinations of the 3D and VI features and all the features, provided the best results; for example, the 3D and VI features provided the PCC and RMSE 0.97 and 0.37 t/ha (14.1%) for the DMY, and 0.98 and 1.51 t/ha (13.7%) for the FY, respectively. When comparing the two estimators, the RF estimator provided better results than the MLR when using individual RGB and VI features, and their combinations; the results with the VI and 3D features were on the same level. The RF estimator provided slightly worse results than the MLR when combining all the features. Regarding the importance of different features, the 3D features were the most important if they were included in the feature combinations: the percentile heights and ExG + CHM were the most important for the DMY and ExG + CHM, GrassI and the percentile heights for the FY (Table 11 and Appendix B, Tables A5 and A6). Thus, the new ExG + CHM index appeared to be significant in grass biomass estimations.

Table 11. The most important features for the Random Forest (RF) (in the order of importance). DMY: dry matter yield; FY: fresh yield; RGB: Red, Green and Blue spectral features; VI: Vegetation Index features; 3D: CHM 3D features.

Case	DMY	FY
Features		
RGB	B, R, G	B, R, G
VI	RVI, OSAVI, NDVI, MGRVI, ExG, MSAVI, ExGR, ExR, RGBVI, GRVI	RVI, NDVI, MGRVI, OSAVI, ExG, MSAVI, RGBVI, ExGR, GRVI, ExR
3D	H _{p90} , H _{p80} , H _{p70} , H _{min} , H _{max} , H _{p50} , H _{mean} , H _{median} , H _{std}	H _{p70} , H _{p80} , H _{p90} , H _{max} , H _{p50} , H _{min} , H _{mean} , H _{median} , H _{std}
RGB + VI	NDVI, RVI, OSAVI, MGRVI, ExG, MSAVI, B, RGBVI, GRVI, ExR	RVI, OSAVI, NDVI, ExG, MSAVI, B, ExGR, RGBVI, G
RGB + 3D	H _{p90} , H _{p80} , H _{min} , H _{p70} , H _{p50} , H _{mean} , H _{median} , H _{max} , G, R	H _{p90} , H _{p80} , H _{p70} , H _{p50} , H _{max} , H _{mean} , H _{median} , H _{min} , G, B
VI + 3D	H _{p90} , H _{min} , GrassI _{max} , H _{p80} , GrassI _{p90} , H _{mean} , H _{p50} , H _{p70} , H _{max} , ExG + H _{p90}	ExG + H _{max} , ExG + H _{p90} , GrassI _{max} , GrassI _{p90} , H _{p90} , H _{p80} , H _{p70} , H _{max} , H _{p50} , H _{median}
RGB + VI + 3D	H _{p90} , H _{min} , H _{p70} , H _{p80} , H _{mean} , H _{max} , H _{p50} , H _{median} , ExG + H _{max} , ExG + H _{p90}	ExG + H _{max} , ExG + H _{p90} , GrassI _{max} , H _{p90} , H _{min} , H _{mean} , H _{p70} , GrassI _{p90} , H _{p80} , H _{p50}

We analysed the sensitivity of the biomass estimation with respect to the date and nitrogen application rate using the RF estimator with the combination of 3D, VI and RGB features. Similar to the analysis with the linear regression in Section 3.2, both the date and the nitrogen fertilization level had an impact on the results (Table 12). When concerning the impact of the measurement date, the results were the worst for the first date: the PCC and RMSE were 0.91 and 0.15 t/ha (13.1%) for the DMY, and 0.95 and 0.48 t/ha (12.1%) for the FY, respectively. The best performance was obtained during the third measurement date: the PCC and RMSE were 0.97 and 0.27 t/ha (9.1%) for the DMY, and 0.98 and 1.30 (10.2%) for the FY, respectively. The results of the second and last measurement dates were almost as good. Regarding the impact of the nitrogen application rate, the best performance for the DMY was achieved with the application rate of 100 kg/ha, which provided the PCC and RMSE of 0.98 and 0.35 t/ha (11.0%), respectively. In the case of the FY, the nitrogen application rates of 50–125 kg/ha performed evenly well giving the PCC and the RMSE of 0.97–0.98 and 0.95–1.71 t/ha (11.3–12.0%), respectively. A nitrogen application rate of 150 kg/ha provided slightly worse estimation accuracy, and the nitrogen level 0 kg/ha provide clearly the poorest estimation accuracy. In the first measurement date, the most important features were ExG + H_{p90}, ExG + H_{max}, GrassI_{p90}, GrassI_{max}

and NIR-based VIs; less important features were the 3D features (Appendix B, Table A6). During the second and third measurement dates, the importance of 3D features increased, even though the most important features were still $ExG + H_{p90}$, $ExG + H_{max}$ and $GrassI_{p90}$. On the last measurement date, the VI features started to dominate: the most important features were NDVI, OSAVI and MSAVI. Between different nitrogen fertilization levels, the selected features had less variation than different dates (Appendix B, Table A6).

Table 12. Random Forest (RF) classification results for different dates and nitrogen fertilizer levels. PCC: Correlation coefficients; RMSE: Root Mean Square Error; NRMSE: Normalized Root Mean Square Error; DMY: dry matter yield; FY: fresh yield; RGB: Red, Green and Blue spectral features; VI: Vegetation Index features; 3D: CHM 3D features; 0–150: Nitrogen fertilizer levels 0–150 kg/ha.

Date	DMY			FY		
	PCC	RMSE (t/ha)	NRMSE (%)	PCC	RMSE (t/ha)	NRMSE (%)
6 June	0.91	0.15	13.09	0.95	0.48	12.13
15 June	0.95	0.24	10.44	0.95	1.27	11.98
19 June	0.97	0.27	9.13	0.98	1.30	10.22
28 June	0.94	0.52	12.11	0.97	1.92	11.30
Nitrogen						
0	0.75	0.19	24.41	0.73	0.71	27.78
50	0.93	0.41	17.88	0.97	0.95	11.37
75	0.95	0.41	14.61	0.97	1.35	11.99
100	0.98	0.35	10.99	0.97	1.48	11.25
125	0.98	0.42	12.45	0.98	1.71	11.55
150	0.93	0.64	18.36	0.96	2.39	14.86

4. Discussion

We developed and assessed a novel drone-based machine learning technique for estimating the height, fresh yield (FY) and dry matter yield (DMY) of grass swards. Our approach was to derive various features from the multispectral photogrammetric data sets, including the height features from the CHM and the colours and different VIs from orthophotos in the red (R), green (G), blue (B) and near-infrared (NIR) spectral bands. The MLR and RF estimators were trained using high variation timothy/meadow fescues mixture swards dominated by timothy.

Our study was the first to integrate various structural and spectral features from a drone multispectral photogrammetric system using machine learning techniques for the grass sward biomass estimation in the context of silage production. The best results were obtained when combining different height, RGB and VI features. The correlations and RMSEs were at best 0.98 and 0.34 t/ha (12.7%) for the DMY and 0.98 and 1.22 t/ha (11.05%) for the FY, respectively. The MLR and RF provided quite similar results (Table 10). Overall, the most important features for the RF were the new indices $ExG + H_{p90}$ and $ExG + H_{max}$ (introduced in this study), the height features and the $GrassI$ (Table 11 and Appendix B, Table A5). Additionally, the CHM-features gave better correlations to the DMY and the FY than the regressions with the physical canopy height measurements by the height stick (H_{ref}) at the three growth stages of the silage sward studied resulting from the three first measurement dates. We obtained the best results on the targeted silage harvesting date (19 June) and just before that (15 June) when the canopy was well-grown and homogeneous. Poorer estimation results were obtained early in the growing season when the sward volume and density was low, as well as after the targeted silage harvesting date when the stand was already heading, and lodging occurred in the most heavily fertilized plots.

In the trial area, we generated the DTM utilizing the paths that were cut down between the sample plots (Figure 1). We evaluated the performance of manual and semi-automatic DTM generation

approaches. In the case of the manual DTM, we classified all points of the paths to ground points. The semi-automatic method also classified most of these same points as ground points. Both methods provided similar DTMs and correlations to the biomasses. The results indicated that it was possible to generate an accurate CHM from a single flight's data without the need to collect DTM data separately before or after harvesting. The second date's automatic DTM's worse RMSE of 6.80 cm was caused by the lower number of overlapping images in some parts of the model that was due to some camera triggering problems during the flight. Our plots had the cut paths (Figure 3), which probably improved ground point detection in all cases. However, the grass height in cut paths was 6–7 cm on each date, into which the photogrammetric DSM could not penetrate well. Because of this, the interpolated DTMs were above the real ground level. Therefore, the canopy height values based on the CHM were lower than the physical height measurements. The limitation of photogrammetric DSM has been discovered in earlier studies [32,52]. One solution for the underestimation could be to use oblique images or combine oblique and nadir images in the DSM generation as suggested in previous studies [3,68]. Accurate georeferencing and a non-deformed photogrammetric block are important requirements in the proposed method. We performed the georeferencing using GCPs, which can be considered a laborious approach when aiming for fully automatic procedures and also expensive equipment for performing field measurements are required. In future studies, our objective will be to evaluate approaches that do not require in situ GCPs, particularly our objective is to implement better direct georeferencing process [69] utilizing a more accurate L1/L2 GNSS/IMU receiver and to investigate relative georeferencing of the multitemporal datasets. This improvement would also reduce the overall cost of the complete measurement system. Our results also supported the general expectations that the large image forward and side overlaps of approximately 80% and the self-calibration during the photogrammetric processing provided a non-deformed photogrammetric block.

In the simple linear regressions, the VIs performed well. The best performing individual VIs were the MSAVI for the DMY and FY (PCC: 0.94–0.99 for different dates) and ExG + H_{p90} for the H_{ref} (PCC: 0.84–0.97 for different dates) (Table 9). Overall, the NIR-based VIs gave better results than the RGB-based VIs. Several studies have shown that the NIR spectral range performs better in the estimation of crop biomass than the RGB spectral range [25,28]. However, the new ExG + CHM indices, suggested by us, provided good results and outperformed all the RGB-based VIs in regressions with all of the physical measurements, and in addition outperformed the best performing VI (MSAVI) in the regressions with the DMY and the H_{ref} . Similarly, in other studies, combined CHM and RGB based VIs have provided better regressions than the CHM and the RGB based VIs separately [29,32]. With increasing grass height, the RGB-based VIs were saturating, which is consistent with previous studies [18,32]. However, the saturation had less impact on the new ExG + CHM indices and the GrassI than other RGB-based VIs; and even less impact on the NIR-based VIs (Table 9 and Figure 6a).

All of the CHM features performed overall better than the VIs; H_{p90} being the best performing CHM feature (Appendix A, Table A4). The simple linear regression results of Possoch et al. [32] indicated also that the grass height was a suitable feature for grass yield estimation; regression of CHM to DMY provided a correlation of 0.80, and the physically measured height to the DMY provided the slightly worse correlation of 0.79. Previous studies have proven in different grasses and crops that the visible spectral range VIs (VI_{VIS}) perform well at the booting stage and do not perform as well in the other growing stages [25,61,70–72]. Wang et al. [42] found that laser scanning derived metrics combined with hyperspectral data can provide better biomass estimates of maize using partial least squares (PLS) regression. Pittman et al. [8] studied estimation of biomass and canopy height in bermudagrass, alfalfa, and the mix (containing a mixture of bermudagrass and alfalfa) using a golf car with mobile ultrasonic, laser and spectral sensors. For single sensor estimations, laser-estimated height measurements had the best correlations to the physically measured canopy heights and to the DMY: the PCC of height regressions was 0.88 for bermudagrass and 0.78 for the mix; correlations to the DMY were 0.88 for bermudagrass and 0.80 for alfalfa. However, combining two or three methods improved correlations of height estimation for bermudagrass giving the PCC of 0.92; and of DMY

estimation in all cases, giving the PCC of 0.92 for bermudagrass, 0.83 for alfalfa and 0.89 for the mix. Additionally, combined laser- and ultrasonic-estimated height measurements provided equivalent and/or better estimates when compared to the physical canopy height measurements and plate meter DMY estimation methods. Differences between method-predicted values versus measured DMY were minimal. The average percent error was 11.2% for the differences between predicted values versus forage harvester and quadrat measurements of forage biomass values (1.64 and 4.91 t/ha), except at the lowest measured DMY, where the errors were larger, the average percent error was 89% and the absolute error <0.79 t/ha. With the greatest measured DMY, the average error was 18% and >6.4 t/ha [8].

Moeckel et al. [73] estimated the DMY and FY with a ground-based ultrasonic and spectrometer in grasslands with a heterogeneous sward structure on four dates representing different growth stages. The MPLSR approach resulted in a PCC of 0.69 (0.39–0.89 for date-specific models) for the DMY and a PCC of 0.82 (0.57–0.93 for date-specific models) for the FY. Fricke and Wachendorf [74] had similar results estimating biomass of legume-grass swards with combined ultrasonic and hyperspectral VIs: PCC were 0.91 in common swards and 0.94–0.95 for species-specific calibrations for DMY. Marabel et al. [33] studied Support Vector Machine (SVM) and Partial Least Squares Regression (PLSR) for estimating the biomass of grasslands from field spectrometer data. The best results for DMY estimation were obtained using PLSR, and the maximum band depth index derived from the continuum removed reflectance in the absorption features between 916–1120 nm and 1079–1297 nm; the PCC was 0.97 and the RMSE was 71.2 t/ha for the DMY. We can thus conclude that our results with the photogrammetric drone data were in most cases better than the previous results obtained with typically more expensive measurement systems, and even with terrestrial measurements.

To obtain accurate estimations of the grass sward biomass using a low-cost drone-based system, we suggest utilizing a high-resolution RGB camera equipped with a good quality lens with a global shutter and potentially combined with an NIR band, e.g., a colour-infrared modified camera. Sensors such as the Parrot Sequoia [75] are not ideal for 3D reconstruction due to the rolling shutter, but the multispectral data are relevant. Datasets should be captured with high image overlaps at a low flying height to provide ultrahigh spatial resolution and dense point clouds. With the support of an accurate onboard direct georeferencing system the overall system and measurement cost could be reduced to a low level. The image processing and machine learning methods introduced in this study were proven to provide accurate results. We recommend integrating 3D, VI and RGB features using advanced machine learning methods.

5. Conclusions

Our study developed and assessed a machine learning technique based on multispectral orthophotos and photogrammetric 3D geometric remote sensing data for the estimation of fresh and dry matter yield of grass swards for silage production. Our approach was to extract various features from a remote sensing dataset by combining an ultra-high resolution photogrammetric canopy height model (CHM) with a pixel size of 1.0 cm and red, green, blue and near-infrared range intensity values and different vegetation indices (VI) extracted from orthophoto mosaics. We compared the performance of the Multiple Linear Regression (MLR) and the Random Forest estimator (RF). The best estimation results were obtained by combining the 3D, RGB and VI features. The RF provided similar or better results than the MLR. The Person's correlation coefficient (PCC) and RMSEs were at best 0.98 and 0.34 t/ha (12.70%), respectively, for the dry matter yield combining the 3D, RGB and VI features, and 0.98 and 1.22 t/ha (11.05%), respectively, for the fresh yield combining the 3D and VI features. We also evaluated the sensitivity of the method by creating variability in the swards by using different nitrogen fertilization rates and by repeating the data capture on four dates of the primary growth of the grass sward. Several points may have reduced the accuracy of the estimates: (1) nonhomogeneous sparse stand as a result of early season; (2) nonhomogeneous sparse stand as a

results of low fertilizer application levels; (3) the heading of the sward due to a late harvesting date; and (4) lodging caused by high fertilization levels.

Our results are consistent with previous scientific results regarding the impact of date and combination of 3D and RGB features on the height and biomass estimation results. Furthermore, our novel approach integrating machine learning algorithms and the various 3D, spectral and VI features from the ultra-high resolution CHM and orthomosaics provided better results than most of the previous studies. The results were also highly precise in absolute terms. The yield estimation results had an excellent accuracy and outperformed the estimation results based on the measurement on the field using the height stick. Our results showed that the proposed method offers an accurate tool for estimating both the fresh yield and the dry matter yield of grass swards particularly close to the targeted silage harvesting stage.

In the next phases of our research, we will integrate the grass sward quality parameters to the estimation process, including nitrogen content and digestibility. We will also compare the proposed approach to multispectral datasets as well as to hyperspectral data. It is necessary also to integrate efficient direct georeferencing approach to the method to further improve the level of automation and cost of the overall system. An important future research topic will be to assess the generalization potential of the developed methods—in other words, to use the trained estimators in other fields without in situ training data. This is a highly relevant topic to develop efficient remote sensing tools with minimum in situ efforts.

Author Contributions: O.N., J.K. and E.H. designed the experiment. O.N. and J.K. planned, acquired and analysed the field reference. N.V., T.H. and R.N. acquired the remote sensing data and processed the data. N.V. corresponded on the statistical analyses. R.N. corresponded on the machine learning methods. N.V., E.H, R.N., J.K. and O.N. analysed the data and wrote the first draft of the paper. All authors assisted in writing and improving the paper.

Acknowledgments: The authors would like to acknowledge funding by the Business Finland DroneKnowledge project (Dnro 1617/31/2016) and the ICT Agri ERA-NET 2015 Enabling precision farming project GrassQ-Development of ground based and Remote Sensing, automated “real-time” grass quality measurement to enhance grassland management information platforms (Project id 35779). We are grateful to Raquel Olivera, Somayeh Nezami and Lauri Markelin for their help in processing the multispectral datasets.

Conflicts of Interest: The authors declare no conflicts of interest. The funding sponsors had no role in the design of the study, in the collection, analyses, or interpretation of data, in the writing of the manuscript, or in the decision to publish the results.

Appendix A

Table A1. Pearson correlation of coefficients (PCC) for all VI's with the DMY, the FY and the H_{ref} from different times. DMY: dry matter yield; FY: fresh yield; H_{ref} : reference height measurements.

Feature	DMY				FY				H_{ref}			
	6 June	15 June	19 June	28 June	6 June	15 June	19 June	28 June	6 June	15 June	19 June	28 June
RGBVI	0.51	0.49	0.77	0.76	0.58	0.43	0.73	0.79	0.51	0.63	0.79	0.59
GRVI	0.80	0.93	0.90	0.95	0.79	0.91	0.88	0.93	0.70	0.96	0.92	0.87
MGRVI	0.23	0.93	0.90	0.95	0.17	0.91	0.88	0.92	0.16	0.96	0.92	0.87
ExG	0.77	0.75	0.87	0.89	0.82	0.71	0.84	0.89	0.72	0.85	0.89	0.76
ExR	0.60	0.96	0.86	0.91	0.55	0.96	0.85	0.85	0.50	0.94	0.87	0.91
ExGR	0.80	0.92	0.90	0.95	0.79	0.90	0.88	0.92	0.70	0.96	0.91	0.87
NDVI	0.92	0.94	0.94	0.89	0.94	0.92	0.92	0.81	0.86	0.97	0.94	0.88
MSAVI	0.95	0.94	0.96	0.95	0.96	0.95	0.97	0.99	0.85	0.94	0.93	0.81
OSAVI	0.94	0.94	0.96	0.97	0.96	0.94	0.96	0.97	0.86	0.96	0.95	0.87
RVI	0.95	0.94	0.96	0.64	0.98	0.96	0.97	0.56	0.86	0.92	0.93	0.74
ExG + H_{p90}	0.91	0.94	0.96	0.90	0.95	0.92	0.94	0.83	0.84	0.97	0.96	0.89
ExG + H_{max}	0.91	0.92	0.96	0.91	0.94	0.90	0.93	0.85	0.83	0.97	0.96	0.90
GrassI _{p90}	0.88	0.91	0.96	0.90	0.93	0.88	0.92	0.85	0.82	0.96	0.96	0.89
GrassI _{max}	0.88	0.92	0.96	0.90	0.94	0.90	0.93	0.83	0.83	0.96	0.96	0.89

Table A2. Pearson correlation of coefficients (PCC) for all VI's with the DMY and the FY from different nitrogen fertilizer levels. DMY: dry matter yield; FY: fresh yield; 0–150: Nitrogen fertilizer levels 0–150 kg/ha.

Feature	DMY						FY					
	0	50	75	100	125	150	0	50	75	100	125	150
RGBVI	0.77	0.85	0.67	0.82	0.89	0.87	0.80	0.90	0.76	0.86	0.89	0.87
GRVI	0.22	0.55	0.48	0.56	0.62	0.55	0.17	0.64	0.59	0.65	0.75	0.60
MGRVI	0.62	0.72	0.72	0.74	0.71	0.78	0.69	0.87	0.85	0.85	0.87	0.86
ExG	0.75	0.88	0.68	0.84	0.85	0.90	0.77	0.94	0.79	0.89	0.92	0.91
ExGR	0.17	0.55	0.49	0.58	0.62	0.59	0.13	0.64	0.60	0.67	0.77	0.64
ExR	0.30	0.25	0.23	0.29	-0.02	0.48	0.35	0.20	0.22	0.26	0.37	0.45
NDVI	0.75	0.95	0.94	0.95	0.88	0.91	0.73	0.95	0.92	0.94	0.96	0.91
MSAVI	0.62	0.91	0.90	0.91	0.87	0.94	0.59	0.95	0.87	0.90	0.94	0.92
OSAVI	0.72	0.94	0.92	0.93	0.88	0.94	0.70	0.96	0.90	0.92	0.96	0.93
RVI	0.74	0.83	0.84	0.86	0.78	0.88	0.69	0.79	0.74	0.79	0.82	0.84
ExG + H _{p90}	0.80	0.92	0.96	0.96	0.93	0.88	0.75	0.98	0.99	0.98	0.98	0.91
ExG + H _{max}	0.85	0.88	0.95	0.94	0.91	0.87	0.83	0.97	0.99	0.97	0.98	0.92
GrassI _{p90}	0.87	0.89	0.95	0.94	0.92	0.89	0.87	0.98	0.99	0.98	0.98	0.94
GrassI _{max}	0.83	0.93	0.96	0.96	0.93	0.91	0.81	0.99	0.99	0.99	0.99	0.94

Table A3. Pearson correlation coefficients (PCC) for all VI's with the H_{ref} from different nitrogen fertilizer levels. H_{ref}: reference height measurements; 0–150: Nitrogen fertilizer levels 0–150 kg/ha.

Feature	H _{ref}					
	0	50	75	100	125	150
RGBVI	0.76	0.83	0.69	0.84	0.89	0.81
GRVI	0.19	0.62	0.54	0.61	0.62	0.63
MGRVI	0.59	0.79	0.80	0.84	0.68	0.88
ExG	0.75	0.88	0.71	0.87	0.79	0.85
ExGR	0.15	0.62	0.55	0.63	0.62	0.66
ExR	0.32	0.16	0.19	0.27	0.06	0.37
NDVI	0.77	0.93	0.95	0.92	0.89	0.86
MSAVI	0.71	0.89	0.89	0.85	0.88	0.87
OSAVI	0.79	0.92	0.92	0.89	0.92	0.88
RVI	0.71	0.80	0.81	0.76	0.73	0.75
ExG + H _{p90}	0.76	0.93	0.99	0.97	0.88	0.94
ExG + H _{max}	0.78	0.93	0.98	0.96	0.87	0.93
GrassI _{max}	0.80	0.93	0.97	0.97	0.88	0.94
GrassI _{p90}	0.80	0.93	0.98	0.97	0.89	0.95

Table A4. Pearson correlation coefficients (PCC) for all VI's and CHM features with the DMY, the FY and the H_{ref} in all datasets. DMY: dry matter yield; FY: fresh yield; H_{ref}: reference height measurements.

Feature	DMY	FY	H _{ref}
RGBVI	0.81	0.80	0.83
GRVI	0.70	0.74	0.68
MGRVI	0.71	0.75	0.80
ExG	0.86	0.87	0.86
ExGR	0.70	0.74	0.68
ExR	0.27	0.33	0.24
NDVI	0.82	0.81	0.81
MSAVI	0.89	0.92	0.82
OSAVI	0.86	0.88	0.81
RVI	0.81	0.73	0.79

Table A4. Cont.

Feature	DMY	FY	H _{ref}
H _{mean}	0.91	0.9	0.93
H _{median}	0.9	0.89	0.93
H _{min}	0.82	0.78	0.81
H _{max}	0.91	0.92	0.94
H _{std}	0.54	0.55	0.56
H _{p50}	0.9	0.89	0.93
H _{p70}	0.91	0.9	0.94
H _{p80}	0.92	0.91	0.94
H _{p90}	0.92	0.92	0.94
ExG + H _{p90}	0.93	0.93	0.95
ExG + H _{max}	0.92	0.93	0.95
GrassI _{max}	0.94	0.93	0.96
GrassI _{p90}	0.93	0.93	0.96
H _{ref}	0.95	0.93	-

Appendix B

Table A5. Selected features for the Multilinear Regression (MLR) (not in the order of importance). DMY: dry matter yield; FY: fresh yield; RGB: Red, Green and Blue spectral features; VI: Vegetation Index features; 3D: CHM 3D features.

Case	DMY	FY
MLR		
RGB	B	B
VI	RGBVI, GRVI, MGRVI, ExR, MSAVI, RVI	RGBVI, MGRVI, ExR, RVI
3D	H _{min} , H _{max} , H _{std}	H _{median} , H _{min} , H _{max} , H _{std} , H _{p50}
RGB + VI	R, G, B, GRVI, ExGR, ExR, NDVI, MSAVI, RVI	R, B, MGRVI, ExG, NDVI, MSAVI, RVI
RGB + 3D	R, G, B, H _{min} , H _{p80}	R, G, B, H _{median} , H _{max} , H _{std} , H _{p50}
VI + 3D	RGBVI, MGRVI, ExG, ExR, MSAVI, RVI, H _{median} , H _{p50} , H _{p80} , GrassI _{max} , ExG + H _{p90}	RGBVI, MGRVI, ExR, NDVI, MSAVI, OSAVI, H _{mean} , H _{max} , H _{std} , H _{p90} , GrassI _{max} , GrassI _{p90} , ExG + H _{max}
RGB + VI + 3D	R, B, RGBVI, MGRVI, ExG, ExR, NDVI, MSAVI, OSAVI, H _{median} , H _{max} , H _{p50} , H _{p90} , ExG + H _{max} , ExG + H _{p90}	R, B, MGRVI, ExR, NDVI, OSAVI, H _{mean} , H _{max} , H _{std} , H _{p90} , GrassI _{max} , GrassI _{p90} , ExG + H _{max} , ExG + H _{p90}

Table A6. The most important features for the Random Forest (RF) (in the order of importance) for different dates and different nitrogen fertilizer levels. DMY: dry matter yield; FY: fresh matter; RGB: Red, Green and Blue spectral features; VI: Vegetation Index features; 3D: CHM 3D features; 0–150: Nitrogen fertilizer levels 0–150 kg/ha.

Case	DMY	FY
Date		
6 June	GrassI _{max} , ExG + H _{max} , GrassI _{p90} , ExG + H _{p90} , MSAVI, OSAVI, NDVI, H _{max} , B, RVI	GrassI _{max} , ExG + H _{max} , MSAVI, NDVI, GrassI _{p90} , OSAVI, ExG + H _{p90} , RVI, H _{p80} , H _{max}
15 June	ExR, MSAVI, B, ExGR, GRVI, H _{mean} , H _{median} , NDVI, G, ExG + H _{max}	GrassI _{max} , OSAVI, RVI, NDVI, MSAVI, H _{p70} , H _{p90} , H _{p80} , MGRVI, ExG + H _{p90}
19 June	ExG + H _{max} , ExG, OSAVI, ExR, NDVI, ExG + H _{p90} , MGRVI, GrassI _{p90} , H _{mean} , H _{p50}	ExG + H _{max} , RVI, NDVI, ExG + H _{p90} , H _{mean} , OSAVI, H _{p50} , H _{p90} , H _{median} , GrassI _{p90}
28 June	ExG + H _{max} , ExR, ExG, GRVI, MGRVI, MSAVI, OSAVI, ExGR, GrassI _{max} , NDVI	ExGR, OSAVI, MSAVI, ExR, GRVI, ExG, MGRVI, ExG + H _{p90} , NDVI, H _{p90}
Nitrogen		
0	H _{max} , H _{p90} , H _{p80} , GrassI _{p90} , Exg + H _{max} , GrassI _{max} , ExG + H _{p90} , H _{std} , H _{p70} , RVI	ExG + H _{p90} , H _{max} , GrassI _{p90} , GrassI _{max} , Exg + H _{max} , H _{std} , H _{p90} , H _{p80} , RVI, NDVI
50	GrassI _{p90} , H _{min} , MSAVI, OSAVI, GrassI _{max} , RVI, B, H _{p70} , H _{p90} , H _{p80}	H _{p70} , ExG + H _{p90} , H _{max} , GrassI _{p90} , RVI, MGRVI, B, ExG + H _{max} , MSAVI, GrassI _{max}
75	H _{max} , GrassI _{max} , ExG + H _{max} , H _{p80} , GrassI _{p90} , H _{min} , H _{p90} , H _{p50} , ExG + H _{p90} , H _{median}	OSAVI, GrassI _{p90} , RGBVI, MSAVI, MGRVI, G, ExG + H _{p90} , RVI, ExG
100	ExG + H _{max} , H _{p80} , H _{p90} , GrassI _{max} , H _{p70} , H _{max} , H _{mean} , H _{p50} , GrassI _{p90}	H _{p90} , GrassI _{max} , H _{p80} , H _{median} , RVI, H _{mean} , GrassI _{p90} , H _{min} , NDVI
125	H _{p90} , H _{p80} , GrassI _{max} , ExG + H _{max} , H _{max} , GrassI _{p90} , OSAVI, MSAVI, H _{p70}	ExG + H _{p90} , MSAVI, GrassI _{max} , RVI, ExG, B, H _{p80} , RGBVI, H _{p90}
150	H _{p90} , RVI, H _{min} , OSAVI, H _{p70} , H _{median} , H _{mean} , MSAVI, H _{max}	ExG + H _{p90} , H _{min} , GrassI _{max} , MGRVI, GrassI _{p90} , RVI, ExG + H _{max} , H _{p80} , MSAVI, NDVI

References

1. Virkajärvi, P. Comparison of Three Indirect Methods for Prediction of Herbage Mass on Timothy-Meadow Fescue Pastures. *Acta Agric. Scand. Sect. B Soil Plant Sci.* **1999**, *49*, 75–81. [CrossRef]
2. Pakarinen, K.; Hyrkäs, M.; Juutinen, E. Development and validation of practical methods for determination of dry matter yield in grass silage swards. In Proceedings of the 12th Congress of the European Society for Agronomy, Helsinki, Finland, 20–24 August 2012; Volume 14, pp. 542–543.
3. Cunliffe, A.M.; Brazier, R.E.; Anderson, K. Ultra-fine grain landscape-scale quantification of dryland vegetation structure with drone-acquired structure-from-motion photogrammetry. *Remote Sens. Environ.* **2016**, *183*, 129–143. [CrossRef]
4. Virkajarvi, P.; Jarvenranta, K. Leaf dynamics of timothy and meadow fescue under Nordic conditions. *Grass Forage Sci.* **2001**, *56*, 294–304. [CrossRef]
5. Tucker, C.J. A critical review of remote sensing and other methods for non-destructive estimation of standing crop biomass. *Grass Forage Sci.* **1980**, *35*, 177–182. [CrossRef]
6. Sanderson, M.A.; Rotz, C.A.; Fultz, S.W.; Rayburn, E.B. Estimating Forage Mass with a Commercial Capacitance Meter, Rising Plate Meter, and Pasture Ruler. *Agron. J.* **2001**, *93*, 1281–1286. [CrossRef]
7. Virkajärvi, P. *Growth and Utilization of Timothy: Meadow Fescue Pastures*; University of Helsinki: Helsinki, Finland, 2004.

8. Pittman, J.; Arnall, D.; Interrante, S.; Moffet, C.; Butler, T. Estimation of Biomass and Canopy Height in Bermudagrass, Alfalfa, and Wheat Using Ultrasonic, Laser, and Spectral Sensors. *Sensors* **2015**, *15*, 2920–2943. [[CrossRef](#)] [[PubMed](#)]
9. Hoffmeister, D.; Waldhoff, G.; Curdt, C.; Tilly, N.; Bendig, J.; Bareth, G. Spatial variability detection of crop height in a single field by terrestrial laser scanning. In *Precision Agriculture '13: Papers Presented at the 9th European Conference on Precision Agriculture*; Stafford, J.V., Ed.; Wageningen Academic: Lleida, Spain, 2013; pp. 267–274.
10. Tilly, N.; Hoffmeister, D.; Cao, Q.; Huang, S.; Lenz-Wiedemann, V.; Miao, Y.; Bareth, G. Multitemporal crop surface models: Accurate plant height measurement and biomass estimation with terrestrial laser scanning in paddy rice. *J. Appl. Remote Sens.* **2014**, *8*, 083671. [[CrossRef](#)]
11. Zhang, C.; Kovacs, J.M. The application of small unmanned aerial systems for precision agriculture: A review. *Precis. Agric.* **2012**, *13*, 693–712. [[CrossRef](#)]
12. Bendig, J.; Bolten, A.; Bareth, G. UAV-based Imaging for Multi-Temporal, very high Resolution Crop Surface Models to monitor Crop Growth Variability Monitoring des Pflanzenwachstums mit Hilfe multitemporaler und hoch auflösender Oberflächenmodelle von Getreidebeständen auf Basis von Bildern aus UAV-Befliegungen. *Photogramm. Fernerkund. Geoinf.* **2013**, 551–562. [[CrossRef](#)]
13. Bendig, J.; Bolten, A.; Bennertz, S.; Broscheit, J.; Eichfuss, S.; Bareth, G. Estimating Biomass of Barley Using Crop Surface Models (CSMs) Derived from UAV-Based RGB Imaging. *Remote Sens.* **2014**, *6*, 10395–10412. [[CrossRef](#)]
14. Li, W.; Niu, Z.; Chen, H.; Li, D.; Wu, M.; Zhao, W. Remote estimation of canopy height and aboveground biomass of maize using high-resolution stereo images from a low-cost unmanned aerial vehicle system. *Ecol. Indic.* **2016**, *67*, 637–648. [[CrossRef](#)]
15. Lucieer, A.; Turner, D.; King, D.H.; Robinson, S.A. Using an Unmanned Aerial Vehicle (UAV) to capture micro-topography of Antarctic moss beds. *Int. J. Appl. Earth Obs. Geoinf.* **2014**, *27*, 53–62. [[CrossRef](#)]
16. Turner, D.; Lucieer, A.; Malenovský, Z.; King, D.; Robinson, S.A. Assessment of Antarctic moss health from multi-sensor UAS imagery with Random Forest Modelling. *Int. J. Appl. Earth Obs. Geoinf.* **2018**, *68*, 168–179. [[CrossRef](#)]
17. Berni, J.; Zarco-Tejada, P.J.; Suarez, L.; Fereres, E. Thermal and Narrowband Multispectral Remote Sensing for Vegetation Monitoring From an Unmanned Aerial Vehicle. *IEEE Trans. Geosci. Remote Sens.* **2009**, *47*, 722–738. [[CrossRef](#)]
18. Hunt, E.R.; Hively, W.D.; Fujikawa, S.; Linden, D.; Daughtry, C.S.; McCarty, G. Acquisition of NIR-Green-Blue Digital Photographs from Unmanned Aircraft for Crop Monitoring. *Remote Sens.* **2010**, *2*, 290–305. [[CrossRef](#)]
19. Candiago, S.; Remondino, F.; De Giglio, M.; Dubbini, M.; Gattelli, M. Evaluating Multispectral Images and Vegetation Indices for Precision Farming Applications from UAV Images. *Remote Sens.* **2015**, *7*, 4026–4047. [[CrossRef](#)]
20. Geipel, J.; Link, J.; Wirwahn, J.; Claupein, W. A Programmable Aerial Multispectral Camera System for In-Season Crop Biomass and Nitrogen Content Estimation. *Agriculture* **2016**, *6*, 4. [[CrossRef](#)]
21. Zarco-Tejada, P.J.; González-Dugo, V.; Berni, J.A.J. Fluorescence, temperature and narrow-band indices acquired from a UAV platform for water stress detection using a micro-hyperspectral imager and a thermal camera. *Remote Sens. Environ.* **2012**, *117*, 322–337. [[CrossRef](#)]
22. Honkavaara, E.; Saari, H.; Kaivosoja, J.; Pölönen, I.; Hakala, T.; Litkey, P.; Mäkynen, J.; Pesonen, L. Processing and Assessment of Spectrometric, Stereoscopic Imagery Collected Using a Lightweight UAV Spectral Camera for Precision Agriculture. *Remote Sens.* **2013**, *5*, 5006–5039. [[CrossRef](#)]
23. Aasen, H.; Burkart, A.; Bolten, A.; Bareth, G. Generating 3D hyperspectral information with lightweight UAV snapshot cameras for vegetation monitoring: From camera calibration to quality assurance. *ISPRS J. Photogramm. Remote Sens.* **2015**, *108*, 245–259. [[CrossRef](#)]
24. Yue, J.; Yang, G.; Li, C.; Li, Z.; Wang, Y.; Feng, H.; Xu, B. Estimation of Winter Wheat Above-Ground Biomass Using Unmanned Aerial Vehicle-Based Snapshot Hyperspectral Sensor and Crop Height Improved Models. *Remote Sens.* **2017**, *9*, 708. [[CrossRef](#)]
25. Bendig, J.; Yu, K.; Aasen, H.; Bolten, A.; Bennertz, S.; Broscheit, J.; Gnyp, M.L.; Bareth, G. Combining UAV-based plant height from crop surface models, visible, and near infrared vegetation indices for biomass monitoring in barley. *Int. J. Appl. Earth Obs. Geoinf.* **2015**, *39*, 79–87. [[CrossRef](#)]

26. Reddersen, B.; Fricke, T.; Wachendorf, M. A multi-sensor approach for predicting biomass of extensively managed grassland. *Comput. Electron. Agric.* **2014**, *109*, 247–260. [[CrossRef](#)]
27. Fricke, T.; Wachendorf, M. Combining ultrasonic sward height and spectral signatures to assess the biomass of legume–grass swards. *Comput. Electron. Agric.* **2013**, *99*, 236–247. [[CrossRef](#)]
28. Tilly, N.; Aasen, H.; Bareth, G. Fusion of Plant Height and Vegetation Indices for the Estimation of Barley Biomass. *Remote Sens.* **2015**, *7*, 11449–11480. [[CrossRef](#)]
29. Bareth, G.; Bolten, A.; Hollberg, J.; Aasen, H.; Burkart, A.; Schellberg, J. Feasibility study of using non-calibrated UAV-based RGB imagery for grassland monitoring: Case study at the Rengen Long-term Grassland Experiment (RGE), Germany. *DGPF Tag.* **2015**, *24*, 1–7.
30. Hunt, E.R.; Doraiswamy, P.C.; McMurtrey, J.E.; Daughtry, C.S.T.; Perry, E.M.; Akhmedov, B. A visible band index for remote sensing leaf chlorophyll content at the canopy scale. *Int. J. Appl. Earth Obs. Geoinf.* **2013**, *21*, 103–112. [[CrossRef](#)]
31. Li, F.; Miao, Y.; Hennig, S.D.; Gnyp, M.L.; Chen, X.; Jia, L.; Bareth, G. Evaluating hyperspectral vegetation indices for estimating nitrogen concentration of winter wheat at different growth stages. *Precis. Agric.* **2010**, *11*, 335–357. [[CrossRef](#)]
32. Possoch, M.; Bieker, S.; Hoffmeister, D.; Bolten, A.; Schellberg, J.; Bareth, G. Multi-temporal crop surface models combined with the rgb vegetation index from uav-based images for forage monitoring in grassland. *ISPRS Int. Arch. Photogramm. Remote Sens. Spat. Inf. Sci.* **2016**, *XLI-B1*, 991–998. [[CrossRef](#)]
33. Marabel, M.; Alvarez-Taboada, F. Spectroscopic Determination of Aboveground Biomass in Grasslands Using Spectral Transformations, Support Vector Machine and Partial Least Squares Regression. *Sensors* **2013**, *13*, 10027–10051. [[CrossRef](#)] [[PubMed](#)]
34. Yue, J.; Feng, H.; Yang, G.; Li, Z. A Comparison of Regression Techniques for Estimation of Above-Ground Winter Wheat Biomass Using Near-Surface Spectroscopy. *Remote Sens.* **2018**, *10*, 66. [[CrossRef](#)]
35. Breiman, L. Random Forests. *Mach. Learn.* **2001**, *45*, 5–32. [[CrossRef](#)]
36. Gislason, P.O.; Benediktsson, J.A.; Sveinsson, J.R. Random Forests for land cover classification. *Pattern Recognit. Lett.* **2006**, *27*, 294–300. [[CrossRef](#)]
37. Belgiu, M.; Drăguț, L. Random forest in remote sensing: A review of applications and future directions. *ISPRS J. Photogramm. Remote Sens.* **2016**, *114*, 24–31. [[CrossRef](#)]
38. Pelletier, C.; Valero, S.; Inglada, J.; Dedieu, G.; Champion, N. An assessment of image features and random forest for land cover mapping over large areas using high resolution Satellite Image Time Series. In Proceedings of the 2016 IEEE International Geoscience and Remote Sensing Symposium (IGARSS), Beijing, China, 10–15 July 2016; pp. 3338–3341.
39. Baccini, A.; Friedl, M.A.; Woodcock, C.E.; Warbington, R. Forest biomass estimation over regional scales using multisource data: MAPPING FOREST BIOMASS. *Geophys. Res. Lett.* **2004**, *31*. [[CrossRef](#)]
40. Koch, B. Status and future of laser scanning, synthetic aperture radar and hyperspectral remote sensing data for forest biomass assessment. *ISPRS J. Photogramm. Remote Sens.* **2010**, *65*, 581–590. [[CrossRef](#)]
41. Fassnacht, F.E.; Hartig, F.; Latifi, H.; Berger, C.; Hernández, J.; Corvalán, P.; Koch, B. Importance of sample size, data type and prediction method for remote sensing-based estimations of aboveground forest biomass. *Remote Sens. Environ.* **2014**, *154*, 102–114. [[CrossRef](#)]
42. Wang, C.; Nie, S.; Xi, X.; Luo, S.; Sun, X. Estimating the Biomass of Maize with Hyperspectral and LiDAR Data. *Remote Sens.* **2016**, *9*, 11. [[CrossRef](#)]
43. Liu, W.; Liu, C.; Hu, X.; Yang, J.; Zheng, L. Application of terahertz spectroscopy imaging for discrimination of transgenic rice seeds with chemometrics. *Food Chem.* **2016**, *210*, 415–421. [[CrossRef](#)] [[PubMed](#)]
44. Karjatilain Kannattava Peltovilejly—Hanke (KARPE). Finnish Guidelines for Producing an Estimate of Biomass for a Grass Sward Parcel. 2012. Available online: https://www.karpe.fi/materiaalit/karpekirjasto/lohkokohtaisen_satotason_arviointi_ohje.pdf (accessed on 15 May 2018).
45. Ardupilot. Ardupilot Open-source Autopilot. 2018. Available online: <http://ardupilot.org> (accessed on 4 May 2018).
46. National Land Survey of Finland. Finnref GNSS RINEX Service. 2018. Available online: <https://www.maanmittauslaitos.fi/en/maps-and-spatial-data/positioning-services/rinex-palvelu> (accessed on 4 May 2018).
47. RTKlib. RTKlib, An Open-source Program Package for GNSS Positioning, Version 2.4.2. 2018. Available online: www.rtklib.com (accessed on 4 May 2018).

48. Häkli, P. Practical test on accuracy and usability of virtual reference station method in Finland. In *FIG Working Week; The Olympic Spirit in Surveying*; Athens, Greece, 2004.
49. Harwin, S.; Lucieer, A. Assessing the Accuracy of Georeferenced Point Clouds Produced via Multi-View Stereopsis from Unmanned Aerial Vehicle (UAV) Imagery. *Remote Sens.* **2012**, *4*, 1573–1599. [[CrossRef](#)]
50. Agisoft. Agisoft Photoscan Professional (Versio 1.3.4) (Software). 2017. Available online: <http://www.agisoft.com/downloads/installer/> (accessed on 24 March 2018).
51. Honkavaara, E.; Eskelinen, M.A.; Polonen, I.; Saari, H.; Ojanen, H.; Mannila, R.; Holmlund, C.; Hakala, T.; Litkey, P.; Rosnell, T.; et al. Remote Sensing of 3-D Geometry and Surface Moisture of a Peat Production Area Using Hyperspectral Frame Cameras in Visible to Short-Wave Infrared Spectral Ranges Onboard a Small Unmanned Airborne Vehicle (UAV). *IEEE Trans. Geosci. Remote Sens.* **2016**, *54*, 5440–5454. [[CrossRef](#)]
52. Dandois, J.P.; Ellis, E.C. High spatial resolution three-dimensional mapping of vegetation spectral dynamics using computer vision. *Remote Sens. Environ.* **2013**, *136*, 259–276. [[CrossRef](#)]
53. James, M.R.; Robson, S.; Smith, M.W. 3-D uncertainty-based topographic change detection with structure-from-motion photogrammetry: Precision maps for ground control and directly georeferenced surveys: 3-D uncertainty-based change detection for SfM surveys. *Earth Surf. Process. Landf.* **2017**, *42*, 1769–1788. [[CrossRef](#)]
54. Agisoft. Agisoft Photoscan User Manual Professional Edition, Version 1.3. 2017. Available online: http://www.agisoft.com/pdf/photoscan-pro_1_3_en.pdf/ (accessed on 26 April 2018).
55. Brovelli, M.A.; Mattia, C.; Fratarcangeli, F.; Giannone, F.; Realini, E. Accuracy assessment of High Resolution Satellite Imagery by Leave-one-out method. In *Proceedings of the 7th International Symposium on Spatial Accuracy Assessment in Natural Resources and Environmental Sciences*, Lisbon, Portugal, 5–7 July 2006; Available online: <http://www.spatial-accuracy.org/system/files/Brovelli2006accuracy.pdf> (accessed on 27 April 2018).
56. Smith, G.M.; Milton, E.J. The use of the empirical line method to calibrate remotely sensed data to reflectance. *Int. J. Remote Sens.* **1999**, *20*, 2653–2662. [[CrossRef](#)]
57. Méndez-Barroso, L.A.; Zárate-Valdez, J.L.; Robles-Morúa, A. Estimation of hydromorphological attributes of a small forested catchment by applying the Structure from Motion (SfM) approach. *Int. J. Appl. Earth Obs. Geoinf.* **2018**, *69*, 186–197. [[CrossRef](#)]
58. Woebbecke, D.M.; Meyer, G.E.; Von Bargen, K.; Mortensen, D.A. Color Indices for Weed Identification Under Various Soil, Residue, and Lighting Conditions. *Trans. ASAE* **1995**, *38*, 259–269. [[CrossRef](#)]
59. Torres-Sánchez, J.; Peña, J.M.; de Castro, A.I.; López-Granados, F. Multi-temporal mapping of the vegetation fraction in early-season wheat fields using images from UAV. *Comput. Electron. Agric.* **2014**, *103*, 104–113. [[CrossRef](#)]
60. Tucker, C.J. Red and photographic infrared linear combinations for monitoring vegetation. *Remote Sens. Environ.* **1979**, *8*, 127–150. [[CrossRef](#)]
61. Meyer, G.E.; Hindman, T.W.; Laksmi, K. *Machine Vision Detection Parameters for Plant Species Identification*; Meyer, G.E., DeShazer, J.A., Eds.; University of Nebraska: Lincoln, NE, USA, 1999; pp. 327–335.
62. Neto, J. *A Combined Statistical-Soft Computing Approach for Classification and Mapping Weed Species in Minimum Tillage Systems*; University of Nebraska: Lincoln, NE, USA, 2004; p. 170.
63. Rouse, J.W.; Haas, R.H.; Schell, J.A.; Deering, D.W. *Monitoring Vegetation Systems in the Great Plains with ERTS*; Third Earth Resources Technology Satellite, Symposium 1; NASA: Washington, DC, USA, 1974; p. 309.
64. Pearson, R.L.; Miller, L.D. Remote mapping of standing crop biomass for estimation of the productivity of the short-grass prairie, Pawnee National Grasslands, Colorado. In *Proceedings of the 8th International Symposium on Remote Sensing of Environment*, Ann Arbor, MI, USA, 2–6 October 1972; pp. 1357–1381.
65. Qi, J.; Chehbouni, A.; Huete, A.R.; Kerr, Y.H.; Sorooshian, S. A modified soil adjusted vegetation index. *Remote Sens. Environ.* **1994**, *48*, 119–126. [[CrossRef](#)]
66. Rondeaux, G.; Steven, M.; Baret, F. Optimization of soil-adjusted vegetation indices. *Remote Sens. Environ.* **1996**, *55*, 95–107. [[CrossRef](#)]
67. Akaike, H. A new look at the statistical model identification. *IEEE Trans. Autom. Control* **1974**, *19*, 716–723. [[CrossRef](#)]
68. Dandois, J.; Olano, M.; Ellis, E. Optimal Altitude, Overlap, and Weather Conditions for Computer Vision UAV Estimates of Forest Structure. *Remote Sens.* **2015**, *7*, 13895–13920. [[CrossRef](#)]

69. Turner, D.; Lucieer, A.; Wallace, L. Direct Georeferencing of Ultrahigh-Resolution UAV Imagery. *IEEE Trans. Geosci. Remote Sens.* **2014**, *52*, 2738–2745. [[CrossRef](#)]
70. Motohka, T.; Nasahara, K.N.; Oguma, H.; Tsuchida, S. Applicability of Green-Red Vegetation Index for Remote Sensing of Vegetation Phenology. *Remote Sens.* **2010**, *2*, 2369–2387. [[CrossRef](#)]
71. Hunt, E.R.; Cavigelli, M.; Daughtry, C.S.T.; McMurtrey, J.E.; Walthall, C.L. Evaluation of Digital Photography from Model Aircraft for Remote Sensing of Crop Biomass and Nitrogen Status. *Precis. Agric.* **2005**, *6*, 359–378. [[CrossRef](#)]
72. Chang, K.-W.; Shen, Y.; Lo, J.-C. Predicting Rice Yield Using Canopy Reflectance Measured at Booting Stage. *Agron. J.* **2005**, *97*, 872. [[CrossRef](#)]
73. Moeckel, T.; Safari, H.; Reddersen, B.; Fricke, T.; Wachendorf, M. Fusion of Ultrasonic and Spectral Sensor Data for Improving the Estimation of Biomass in Grasslands with Heterogeneous Sward Structure. *Remote Sens.* **2017**, *9*, 98. [[CrossRef](#)]
74. Wachendorf, M.; Fricke, T.; Möckel, T. Remote sensing as a tool to assess botanical composition, structure, quantity and quality of temperate grasslands. *Grass Forage Sci.* **2018**, *73*, 1–14. [[CrossRef](#)]
75. MicaSense Parrot Sequoia Multispectral Sensor. Available online: <https://www.micasense.com/parrotsequoia> (accessed on 24 March 2018).



© 2018 by the authors. Licensee MDPI, Basel, Switzerland. This article is an open access article distributed under the terms and conditions of the Creative Commons Attribution (CC BY) license (<http://creativecommons.org/licenses/by/4.0/>).