

1 **The gibbon's Achilles tendon revisited: consequences for the**  
2 **evolution of the great apes?**

3

4

5 Peter Aerts <sup>1,2</sup>, Kristiaan D'Août <sup>3,1</sup>, Susannah Thorpe <sup>4</sup>, Gilles Berillon <sup>5</sup> and Evie Vereecke <sup>6</sup>

6

7 <sup>1</sup>: Department Biology, University of Antwerp (BE)

8 <sup>2</sup>: Department of Movement and Sports Sciences, University of Ghent (BE)

9 <sup>3</sup>: Department of Musculoskeletal Biology, University of Liverpool (UK)

10 <sup>4</sup>: School of Biosciences, University of Birmingham (UK)

11 <sup>5</sup>: Department of Prehistory, MNHN, CNRS (FR)

12 <sup>6</sup>: Department of Development and Regeneration, University of Leuven (BE)

13

14

15 Corresponding Author:

16 Peter Aerts

17 FunMorph-lab

18 Department of Biology

19 University of Antwerp (CDE)

20 Universiteitsplein 1

21 B2610 Wilrijk

22 Belgium

23 [peter.aerts@uantwerpen.be](mailto:peter.aerts@uantwerpen.be)

24

25

26 **Abstract**

27

28 The well-developed Achilles tendon in humans is generally interpreted as an adaptation for mechanical  
29 energy storage and reuse during cyclic locomotion. All other extant great apes have a short tendon  
30 and long-fibered triceps surae, which is thought to be beneficial for locomotion in a complex arboreal  
31 habitat as this morphology enables a large range of motion. Surprisingly, highly arboreal gibbons show  
32 a more human-like triceps surae with a long Achilles tendon. Evidence for a spring-like function similar  
33 to humans is not conclusive.

34 We revisit and integrate our anatomical and biomechanical data to calculate the energy that can be  
35 recovered from the recoiling Achilles tendon during ankle plantar flexion in bipedal gibbons. Only 7.5%  
36 of the required external positive work in a stride can come from tendon recoil, yet it is delivered at an  
37 instant when the whole body energy level drops. Consequently, an additional similar amount of  
38 mechanical energy must simultaneously dissipate elsewhere in the system. Altogether, this challenges  
39 the concept of an energy-saving function in the gibbon's Achilles tendon.

40 Cercopithecids, sister group of the apes, also have a human-like triceps surae. Therefore, a well-  
41 developed Achilles tendon, present in the last common 'Cercopithecoidea-Hominoidea' ancestor,  
42 seems plausible. If so, the gibbon's anatomy represents an evolutionary relict ('no harm – no benefit'),  
43 and the large Achilles tendon is not the premised key-adaptation in humans (although the spring-like  
44 function may have further improved during evolution). Moreover, the triceps surae anatomy of extant  
45 non-human great apes must be a convergence, related to muscle control and range of motion. This  
46 perspective accords with the suggestions put forward in the literature that the last common hominoid  
47 ancestor was not necessarily great-ape-like, but might have been more similar to the small-bodied  
48 catarrhines.

49

50 *State of the art*

51

52 When looking at the gross morphology of the triceps surae in the extant great apes<sup>1</sup>, the difference  
53 between humans and the other species is conspicuous (Fig1). In humans, the bellies of the  
54 gastrocnemius muscle are short-fibered and pennate, and insert together with the soleus via a well-  
55 developed Achilles tendon onto the calcaneus (e.g. Frey, 1913; Swindler and Wood, 1973; Standing,  
56 2016). In contrast, in non-human great apes, an Achilles tendon is externally barely visible and the  
57 bellies of the gastrocnemius muscle are extended with a more parallel orientation of the long muscle  
58 fibres (e.g. Frey, 1913; Hanna and Schmitt, 2011; Swindler and Wood, 1973; Thorpe et al, 1999;  
59 Vereecke et al., 2005a; Myatt et al, 2011). These contrasting morphologies correlate with differences  
60 in locomotor repertoire: while orangutans, gorillas, chimpanzees and bonobos share a wide range of,  
61 often arboreal, locomotor behaviours such as orthograde (i.e. upright trunk) suspension and  
62 clambering, quadrupedalism, vertical climbing and hand-assisted bipedalism (see Thorpe and  
63 Crompton, 2006 and Hunt, 2016 for reviews), modern humans are primarily terrestrial habitual bipeds.

64 The well-developed human's Achilles tendon is considered to be an adaptation for energy-efficient  
65 cyclic locomotion and is assumed to have originated at some point after 3 million years (Myr) ago in  
66 the genus *Homo* (Bramble and Lieberman, 2004). The tendon is stretched and loaded with strain  
67 energy during initial dorsiflexion (decreasing ankle angle) of the stance phase and recoils during the  
68 plantar flexion (increasing ankle angle) later in stance to power the foot push-off. As such, the Achilles  
69 tendon is a component of the spring element in the SLIP-mechanism (Spring Loaded Inverted  
70 Pendulum; Full and Koditschek, 1999; Geyer et al., 2006) that is optimally functioning during running:  
71 the kinetic and potential energy that must be extracted from the system at the whole body level early  
72 in stance (the so-called negative external work) is converted - at least partly - to strain energy in the  
73 spring element and this is recycled to power part of the subsequent push off (e.g. Alexander, 2003;  
74 Bertram, 2016). In humans, at a running speed of 4.5 ms<sup>-1</sup>, 35% of the required external positive work  
75 per stride can thus be recovered from the recoil of the Achilles tendon (e.g. Alexander, 1991, 2003).

76 The morphology of the non-human great apes, on the other hand, is generally considered to represent  
77 the ancestral state (Bramble and Lieberman, 2004), being beneficial when moving about in an arboreal  
78 environment. Movement patterns are less cyclic and less uniform and the long-fibered muscles  
79 facilitate muscular control over a large range of motion, which is essential to deal efficiently with the  
80 high 3-dimensional complexity of the habitat and to respond to the compliance of the substrate (Myatt  
81 et al., 2011; Preuschoft et al., 1992; Thorpe et al., 1999).

82 Remarkably, given their phylogenetic position and their largely arboreal lifestyle, the gibbon's triceps  
83 surae has a more human-like appearance (Fig1). There is a long and well-developed Achilles tendon,  
84 firmly attaching onto the heel bone, and the muscle bellies of the gastrocnemius are short-fibered and  
85 pennate (Frey, 1913; Vereecke et al., 2005a). Questioning the adaptive meaning of this morphology  
86 in the primarily brachiating lesser apes seems essential to understand the evolution of locomotor  
87 diversity in the apes.

88 Because of the high resemblance between the gibbon and human Achilles tendon, it is tempting to  
89 search for an explanation for gibbons that follows a similar line of thought to that assumed for the  
90 human Achilles tendon. When on the ground to cross gaps between trees that are too large to cross  
91 arboreally, or when moving on large tree branches, gibbons most often use a bipedal gait (Verecke  
92 et al., 2006a; Baldwin and Teleki, 1976; Fleagle, 1976; Gittins, 1983; Sati and Alfred, 2002). Despite

---

<sup>1</sup> Here, orangutans, gorillas, chimpanzees, bonobos *and* humans are considered the extant great apes (i.e. extant Hominidae).

93 the presence of a double support phase (i.e. both feet on the ground simultaneously; there is no aerial  
94 phase in the bipedal cycle), this gait must be classified as ‘grounded running’ (cf. Vereecke et al.,  
95 2006b,c) as is also found for terrestrial locomotion in birds (e.g. Andrada et al., 2013, 2015): at the  
96 whole body level, kinetic and potential energy fluctuations accord to the dynamics of running (i.e. in-  
97 phase decrease and subsequent increase of kinetic and potential energy in each single step; Vereecke  
98 et al., 2006b, Vereecke & Aerts, 2008). As such, the SLIP-mechanism might be functional. Moreover,  
99 the safety factor of the Achilles tendon (i.e. tendon strength over tendon loading) appears, together  
100 with that of the patella tendon, to be the lowest of all the hind limb muscles in the gibbon (Vereecke  
101 et al., 2005a; Channon et al., 2009; Vereecke and Channon, 2013). A low (but safe) safety factor is  
102 required for functionally significant energy storage and recoil. Furthermore, the ratio of the tendon  
103 length over the effective muscle fascicle length (i.e. accounting for pennation angle) is rather high for  
104 the triceps surae (Vereecke et al., 2005a; Channon et al., 2009; Vereecke & Channon, 2013). Such  
105 muscle-tendon morphology can be expected if the tendon needs to do the work. One may also look  
106 at this from a slightly different perspective. Channon et al. (2009) presented the relationship between  
107 the physiological cross-sectional area (PCSA; measure for potential maximal load) of the limb muscles  
108 and their fascicle length (measure for the potential shortening), thus representing a sort of concentric  
109 work space, as it expresses the potential maximal load against potential shortening. Muscle-tendon-  
110 complexes that are part of the spring-element of the SLIP-mechanism should combine a high PCSA or  
111 force output with short fibres, enabling the tendon to do most of the concentric work. Surprisingly, all  
112 plantar flexors occupy a rather ‘unspecialized’ region in the concentric work space where small PCSA  
113 and short fibres are combined (see Channon et al., 2009). In this respect, gibbons appear to be no  
114 different from the non-human great apes.

115

### 116 *The role of the tendon revisited*

117 The evidence provided above for the gibbon’s Achilles tendon working as energy-saving device during  
118 ‘grounded’ running is indirect. Moreover, its identification as ‘unspecialized’ in the muscle-tendon  
119 workspace could be interpreted as a counter-indication for this role and former analyses (Vereecke et  
120 al., 2006b; Vereecke and Aerts, 2008) were also unable to categorically demonstrate an energy-saving  
121 role during grounded running. Here we take a novel approach to resolve this debate. The amount of  
122 strain energy that is stored *in vivo* in the tendon of the white-handed gibbon (*Hylobates lar*) during  
123 walking steps at the onset of plantar flexion, and that can thus potentially be recovered via recoil, is  
124 calculated and compared with the mechanical work input needed at the whole body level (the so-  
125 called positive external work) to complete a walking cycle (i.e. stride = left + right step). In order to do  
126 so, the kinematic, dynamic, material property and anatomical data collected by Vereecke et al.  
127 (2005a,b, 2006a,b,c), Vereecke and Aerts (2008), Channon et al. (2009, 2010b) and Vereecke and  
128 Channon (2013) will be combined in a new synthesis. (A short synopsis of the Materials and Methods  
129 of these papers is included as supplementary material).

130 When the Centre Of Pressure [COP; instantaneous position of the point of application of the resultant  
131 Ground Reaction Force (GRF) at the plantar surface of the foot] is known throughout the ground  
132 contact phase, the moment of the GRF with respect to the ankle joint can be determined quite  
133 accurately as a function of stance time by multiplying at any instant the GRF with the perpendicular  
134 distance from the joint centre to the GRF (Fig2A)<sup>2</sup>. This moment (dashed curve) is presented together  
135 with the ankle joint kinematics (thin curve) as a function of normalized stance time in Fig2B. For the

---

<sup>2</sup> Inertial effects can safely be neglected in this account, given the small mass (1.2% of total body mass) and the low accelerations of the slender foot segments (cf. Vereecke et al., 2006b; Vereecke and Aerts, 2008).

136 larger part of stance (about 79%), the ankle joint dorsiflexes and only during the last 21% of stance,  
137 does it plantar flex again, to power the foot push-off. At the onset of plantar flexion, the (minimal)  
138 ankle joint angle reaches 103° and the *in vivo* moment of the GRF that tends to dorsiflex the joint  
139 equals 2.60 Nm (see Fig2B).

140 At any instant in the stride, the moment of the GRF with respect to the ankle must be balanced by the  
141 muscle-tendon-systems that cross the joint. It is therefore possible to estimate the *in vivo* tensile force  
142 acting along the Achilles tendon at the onset of ankle plantar flexion, provided that the moment arm  
143 of the Achilles tendon (i.e. perpendicular distance from the joint centre to the tendon; Fig2A) at the  
144 coinciding joint angle (103°) is known<sup>3,4</sup>. Muscle moment arms were accurately determined by  
145 Channon et al. (2010b). For an ankle joint of 103°, the moment arm of the Achilles tendon in *Hylobates*  
146 *lar* recalculates to 1.48 cm. Consequently, the *in vivo* tensile force along the tendon at the onset of  
147 ankle plantar flexion equals 175.67 N [i.e. 2.60 Nm/(1.48 cm 10<sup>-2</sup>)].

148 Cyclic tensile load-deformation tests on the Achilles tendon were carried out by Vereecke and Channon  
149 (2013). The tendon's behaviour conforms to that of the text book examples (e.g. Alexander, 2003):  
150 apart from a toe-region at low loads, the load-deformation relationship is rather linear at higher  
151 loading; at recoil, a hysteresis of on average 13.5% (mean ± SD = 3.4%; n=14) is observed (i.e. difference  
152 between loading and unloading energy). The slope of the linear loading part gives the stiffness, which  
153 is on average 99.6 Nmm<sup>-1</sup> (mean ± SD = 42.7 Nmm<sup>-1</sup>; n=14). Since the tensile force divided by the  
154 stiffness equals the extension of the tendon, the *in vivo* stretch of the Achilles tendon at the onset of  
155 the ankle plantar flexion amounts to 1.76 mm (i.e. 175.67 N/99.6 Nmm<sup>-1</sup>).

156 Finally, the amount of strain energy that is stored in the Achilles tendon at the onset of ankle plantar  
157 flexion (and which is available to power the plantar flexion) is represented by the area under the load-  
158 deformation curve. Because of the largely linear behaviour when loaded, this area is given by (175.67  
159 N x 1.76 mm 10<sup>-3</sup>)/2 which equals 0.15 J.

160 At the whole-body level, the positive work needed to complete a stride amounts on average to 3.56 J  
161 (Vereecke et al., 2006b)<sup>5</sup>. Taking the 13.5% hysteresis into account, 0.26 J [i.e. (0.15 J left + 0.15 J right)  
162 x (1-0.135)] of this can theoretically be recovered from the recoiling left and right Achilles tendons  
163 during the push-off of the feet. This amounts to merely 7.5% of the required external positive work  
164 per stride. This amount can directly be compared with the 35% mentioned above for humans (but see  
165 also<sup>6</sup>). More importantly, however, plantar flexion seems to come at the wrong instant. To be

---

<sup>3</sup> In this approach is assumed that the balancing activity is taken entirely by the triceps surae, hence solely acting along the Achilles tendon. As such, the estimate for the tensile force along the tendon at the onset of ankle plantar flexion represents a maximal estimate, as co-contraction of the digital flexors would result in a reduction of the Achilles tendon stress.

<sup>4</sup> It should be noted that co-contraction of the dorsiflexors (which could lead to higher tensile stress in the Achilles tendon) at that instant in stance is highly unlikely.

<sup>5</sup> This must be considered as a minimum estimated for the required positive work input, as this concerns the external work only (i.e. whole body level; movements of the Body Centre Of Mass or BCOM). Swinging the limbs with respect to the BCOM can represent a considerable extra cost (see for instance Marsh et al., 2004).

<sup>6</sup> Similar approaches on human running (4.5 ms<sup>-1</sup>) show 35% of the external positive work (mechanical energy) comes from elastic recoil of the Achilles tendon during the second half of the ground contact phase in each cycle; i.e. energy stored during the first half of stance (Ker et al., 1987, Alexander, 1991, 2003). This is probably even a conservative estimate. Lai et al. (2014) show that at comparable running speeds, energy recovery from the triceps surae tendon can amount to more than 50J per step (which is about 140% of what was determined from the former ex-vivo experiments; see Lai et al., 2014 and references therein). Clearly, the eccentric-concentric work of the triceps surae during running steps will still require metabolic energy, even when the entire strain cycle of the muscle tendon unit (MTU) is taken by the tendon. Cross-bridge cycling is needed to prevent extension of the muscle belly and enable loading of the tendon (e.g. Fletcher and MacIntosh, 2015).

166 effective, tendon recoil should happen when the mechanical whole body energy level increases (i.e.  
167 mechanical energy is added to the system). However, most often (step-to-step variability is observed)  
168 plantar flexion just occurs when, at the whole body level, mechanical energy must be extracted from  
169 the system (i.e. negative work must be performed; Fig2B). Consequently, Achilles tendon recoil in  
170 plantar flexion during ground contact (which means that mechanical energy is added to the system)  
171 could eventually come at the extra cost for energy dissipation by eccentric muscle contraction.  
172 Moreover, the foot is only partially plantar flexed at the end of stance when the joint torque is zero  
173 again (Fig2B). This means that either the recoil energy is dissipated by extending the triceps surae  
174 muscle belly during that final stance phase or, because of the biarticular arrangement of the  
175 gastrocnemius, that energy is transferred to the knee to assist further active knee flexion observed  
176 final in stance (see Vereecke et al., 2006b)<sup>7</sup>.

177 If not for energy storage and recoil during grounded running locomotion, what could the explanation  
178 of the well-developed Achilles tendon in gibbons be? Clearly, other, even rare behaviours may entail  
179 selective pressure and morphological adaptation. Gibbons also engage, for instance, in bipedal and  
180 tripedal gallops and a sort of half bound (crutching gallop) (cf. Vereecke et al., 2006a), and show  
181 excellent leaping performance. The potential use of tendon recoil for energy recovery (while galloping)  
182 or power amplification (for leaping) cannot be excluded, but biomechanical results presented by  
183 Channon et al. (2010a, 2011a,b) do not support this for leaping.

184 Here, we propose an alternative perspective. Available information from the literature and our own  
185 observations suggest that the Achilles tendon is also well-developed and firmly attaching to the heel  
186 bone in extant Cercopithecoidea (e.g. Frey, 1913; Swindler and Wood, 1973; own dissections on  
187 *Theropithecus gelada* (gelada baboon), *Papio anubis* (olive baboon), *Macaca maura* (Moor  
188 macaque), *Macaca mulatta* (rhesus monkey), *Semnopithecus entellus* (Hanuman langur), *Colobus*  
189 *guereza kikuyensis* (mantled guereza), *Colobus spec.*, *Trachypithecus francoisi* (François' leaf monkey);  
190 see supplementary material and Fig1). It seems therefore conceivable that this morphological  
191 character was also present in the basal ancestor of this superfamily, hence also in the basal  
192 representative of the sister taxon, the Hominoidea (Fig1). Is it plausible that the Achilles tendon is  
193 retained as a relict in the branch leading to the Hylobatidae (Fig1)?

194  
195 If selection acted predominantly on the principal locomotor mode in gibbons, i.e. on brachiation (e.g.  
196 Bertram 2004; Bertram & Chang, 2001; Bertram et al., 1999; Chang et al., 1997, 2000; Fleagle, 1976;  
197 Michilsens et al., 2011, 2012; Preuschoft & Demes, 1984; Usherwood & Bertram, 2003; Usherwood et  
198 al., 2003), adaptations can be expected primarily at the level of the forelimbs. During brachiation,  
199 hindlimb movements are potentially useful to modulate whole body rotational inertia and to avoid  
200 hitting lower lying branches, a role which, most likely, did not imply important adaptive modifications  
201 of the lower hind limb muscles. As such, it can be hypothesized that the triceps surae, with its long  
202 tendon, was not under selective pressure (no harm, no benefit) and could keep its ancestral  
203 appearance during hylobatid evolution.

204

---

For this purpose, short-fibred (pennate) bellies are the best option: these can deliver the required force at a minimal metabolic cost. At the MTU-level, in humans, up to 75% of the positive work output comes from the tendon (e.g. Hof et al., 2002; Lai et al., 2014). Given an efficiency of 0.2 – 0.25 for concentric work in muscle (Woledge et al., 1985), similar MTU stress-strain cycles for 'long-fibred – short tendon' triceps surae muscle would become very expensive.

<sup>7</sup> It should be noted that this conclusion refers to the role of the Achilles tendon during plantar flexion of the foot only. It may well be that other muscle-tendon systems (for instance the digital flexors or the knee extensors) do act as functional energy-saving mechanisms.

205 *Consequence for the evolution of the great apes*

206 If the above hypothesis is supported, then the short-fibred gastrocnemius muscle with a long Achilles  
207 tendon should also be ancestral for the Hominidae. Given that this represents also the extant human  
208 morphology, it seems most parsimonious that this ancestral morphology was retained rather than re-  
209 acquired in the evolutionary lineage leading to the habitually bipedal, terrestrial modern humans. This  
210 lends weight to Thorpe et al.'s (2007) conclusion that human bipedalism is less an innovation than an  
211 exploitation of a locomotor behaviour retained from the common great ape ancestor. To be effective,  
212 the recoiling Achilles tendon should work against a stiff lever as it is functionally present during the  
213 push-off phase in the modern human foot. Considerable evidence exists that early hominins had more  
214 mobile feet and, therefore, probably a less complete toe-off function compared to modern humans  
215 (e.g. Lieberman, 2012). Thus, although the performance of the Achilles tendon as energy-saving device  
216 might well have been further improved during human evolution<sup>8</sup>, considering the emergence of the  
217 human Achilles tendon as a key adaptation for economical cyclic bipedal locomotion is probably no  
218 longer appropriate.

219 This also implies that the 'long-fibered – short tendon' appearance of the triceps surae in the  
220 orangutan, the gorilla, the chimpanzee and the bonobo does not represent the retained ancestral state  
221 as it is generally considered (cf. above). Rather, it might represent further convergent evolution from  
222 an above-branch quadrupedal ancestor (cf. Almécija et al, 2009; Alba et al., 2015) with short-fibred  
223 gastrocnemius muscles and a long Achilles tendon, towards the long-fibered muscles facilitating the  
224 muscular control and large range of motion that is beneficial for the arboreal lifestyles of each of the  
225 large-bodied extant non-human Hominidae (see for instance Myatt et al., 2011; Preuschoft et al., 1992;  
226 Thorpe et al., 1999)<sup>9</sup>. In this context, it is remarkable that lorises also have a short Achilles tendon

---

<sup>8</sup> Given that modern humans gain up to 35% of the positive BCOM work required for running from tendon recoil (e.g. Alexander, 2003; about 5x more than what can potentially be recovered in gibbons), it is tempting to speculate on what has changed during human evolution to improve the percentage contribution of elastic recoil. This percentage increase may be due to (relatively) lower positive BCOM work requirements, (relatively) higher energy storage in the tendon, or both. The positive work requirements over a complete cycle (L+R) for human running at preferred speed are 3.4 J/kg (body mass; Fiers et al., 2013; Willems et al., 1995), much higher than the 0.6 J/kg here calculated for the gibbon (3.6 J/cycle for 6.3 kg animal; cf. Supplementary Material). Consequently, elevated energy storage must be in play. Human Achilles tendon stiffness is rather variable (for instance depending age or training level), but an average and physiologically relevant value of 180 Nmm<sup>-1</sup> is reported in literature (e.g. Lichtwark & Wilson, 2005, 2006; Uchida et al., 2016), nearly doubling the stiffness of the gibbon's tendon. Stiffer tendons imply less elastic energy storage for a given tendon loading. Thus, tendon force at the onset of plantar flexion (enabling recoil) has to be considerably higher in humans. The ankle extension torque is maximal and equals 2.5 Nm/kg (Fiers et al., 2013; preferred running speed) when plantar flexion starts (about at midstance; notice that this value increases further with running speeds). Taking account for the according Achilles tendon moment arm of about 5 cm (e.g. Leardini & O'Connors, 2012; Maganaris et al., 2000; relative to the lower leg length about twice that of the gibbon), maximal tendon loading equals 50 N/kg, actually not that much higher than what can be calculated for the gibbon (29 N/kg = 2.6 Nm/6.3kg/0.0148m). In other words, size (body mass) as such (obviously coupled to the specific locomotor dynamics) seems to be an important determinant for the higher elastic energy storage. Using the above mentioned data for human preferred running (and accounting for an hysteresis of 10%; e.g. Fletcher & MacIntosh, 2015; Uchida et al., 2016) the relative energy storage over a cycle recalculates to 0.7J/kg which is about 17x more than in the gibbon (0.041J/kg = 0.26J/6.3kg) and accounts (at this relatively slow running speed) for 21% of the positive BCOM work.

<sup>9</sup> It should be noted that this alternative scenario does not necessarily imply a larger number of character-state changes (i.e. being less parsimonious) than the classical scenario in which the 'short-fibered - long tendon' triceps surae evolved independently from a 'long-fibered – short tendon' ancestral state in both the gibbons and humans. If it is agreed that the common ancestor of the cercopithecoids and hominoids shared the 'long-tendon' character state (cf. main text and see supplementary material), this feature must first have been lost,

227 comparable to great apes (Hanna & Schmitt, 2011) which is interpreted as a convergent feature (next  
228 to others) related to selection for slow, cautious arboreal clambering (see for instance Cartmill and  
229 Milton, 1977). This view conforms to the suggestion by Alba et al. (2015) that the last common  
230 hominoid ancestor was not necessarily great-ape-like and that small-bodied catarrhines could have  
231 played a remarkable role in ape evolution. It also accords with the suggestions by Almécija et al.(2009)  
232 (based on their analysis of hominoid forelimbs) that above-branch quadrupedalism inherited from  
233 stem hominoids constituted a significant component of the locomotor repertoires of different  
234 hominoid lineages at least until the late Miocene. And finally, it also supports the suggestion by Lovejoy  
235 et al.(2009a,b) that the last common ancestor of the African apes likely had feet that functioned like  
236 those of living monkeys rather than like those of apes. Based on the present revision, it seems plausible  
237 to include the evolution of the Achilles tendon in their functional perspective, and to extend this to all  
238 extant great apes.

239

240

#### 241 **Ethics Statement**

242 This paper revises and integrates previously published data. We refer to the source publications (cf.  
243 references). No additional experiments were carried out.

244

#### 245 **Data Accessibility**

246 This paper revises and integrates previously published data. We refer to the source publications (cf.  
247 references). No additional data were collected for the purpose of this specific contribution. On  
248 request, more information can be provided by the authors (contact dr. [evie.vereecke@kuleuven.be](mailto:evie.vereecke@kuleuven.be) ).

249

#### 250 **Funding**

251 There is no specific funding for this contribution.

252

#### 253 **Author Contribution**

254 PA provided the new perspective, revisited and integrated the original data, participated in some of  
255 the original data collection, participated in the final discussion and drafted the manuscript; KD  
256 participated in the collection of the original data and participated in the final discussion on the  
257 manuscript; ST brought in the evolutionary insights and participated in the final discussion on the  
258 manuscript; GB provided the anatomical data on *Macaca*, *Papio* and *Colobus* and participated in the  
259 final discussion on the manuscript; EV carried out and/or supervised all the studies providing the  
260 original data and participated in the final discussion on the manuscript. All authors gave final approval  
261 for publication.

262

#### 263 **Competing Interests**

264 We have no competing interests.

265

#### 266 **Acknowledgements**

267 We would like to thank the staff of the Animal Park Planckendael for access and support in studying  
268 the gibbons. We also want to acknowledge Timo Van Leeuwen for the art work in this manuscript. Part  
269 of the original studies were funded by the Research Foundation Flanders, and part of the dissections  
270 of cercopithecoids were funded by the International Research Network (IRN, CNRS) *Bipedal*  
271 *Equilibrium*. R. Lacoste (CNRS Primatology Station, Rousset, France). Dr. M. Herbin (National Museum  
272 of Natural History, Paris, France), Dr. François Druelle (University of Antwerp) and dr. Mélanie Berthet

---

in order to re-appear then in the stem hylobatids (as all seem to have a well-developed tendon) and in humans independently. This implies an identical number of character-state changes as for the premised convergent appearance of the 'long-fibred – short tendon' state of the triceps surae in the non-human great apes.



273 (zoo of Besançon, FR) were very helpful in collecting additional cadaver material of cercopithecoids  
274 and in assisting with the dissections.

275

## 276 **References**

277

278 Alba, D., S. Almécija, D. DeMiguel, J. Fortuny, M. Pérez de los Ríos, M. Pina, J. Robles, S. Moyà-Solà  
279 (2015) Miocene small-bodied ape from Eurasia sheds light on hominoid evolution. *Science*. 350: DOI:  
280 10.1126/science.aab2625.

281 Almécija, S., D. Alba & S. S. Moyà-Solà (2009) Pierolapithecus and the functional morphology of  
282 Miocene ape hand phalanges: paleobiological and evolutionary implications. *Journal of Human*  
283 *Evolution* 57: 284–97.

284 Alexander, R. McN (1991) Energy-saving mechanisms in walking and running. *Journal of Experimental*  
285 *Biology*. 160: 55-69.

286 Alexander, R. McN. (2003) *Principles of animal locomotion*. Princeton University Press.

287 Andrada, E., C. Rode & R. Blickhan (2013) Grounded running in quails: Simulations indicate benefits  
288 of observed fixed aperture angle between legs before touch-down. *Journal of Theoretical Biology*.  
289 335: 97–107.

290 Andrada, E., D. Haase, Y. Sutedja, J. Nyakatura, B. Kilbourne, J. Denzler, M. Fischer & R. Blickhan  
291 (2015) Mixed gaits in small avian terrestrial locomotion. *Scientific Reports*. 5, 13636; doi:  
292 10.1038/srep13636.

293 Baldwin, L. & G. Teleki (1976) Patterns of gibbon behavior on Hall's island, Bermuda. In: *Gibbon and*  
294 *Siamang*, Vol. 4, (ed. D. Rumbaugh). pp. 21-105. Karger, Basel,

295 Bertram, J. (2004) New Perspectives on Brachiation Mechanics. *Yearbook of Physical Anthropology*  
296 47:100–117.

297 Bertram, J. & Y-H. Chang (2001) Mechanical energy oscillations of two brachiation gaits:  
298 measurement and simulation. *American Journal of Physical Anthropology*. 115: 319–326.

299 Bertram, J., A. Ruina, C. Cannon, Y-H, Chang & M. Coleman (1999). A point-mass model of gibbon  
300 locomotion. *Journal of Experimental Biology*. 202: 2609–2617.

301 Bertram, J. (2016) *Understanding mammalian locomotion. Concepts and applications*. John Wiley &  
302 Sons.

303 Bramble D. & D. Liebermann (2004) Endurance running and the evolution of Homo. *Nature*. 432:  
304 345-352.

305 Cartmill, M. & K. Milton (1977) The lorisform wrist joint and the evolution of “brachiating”  
306 adaptations in the hominoidea. *American Journal of Physical Anthropology*. 47: 249-279.

307 Chang, Y-H., J. Bertram & A. Ruina (1997) A dynamic force and moment analysis system for  
308 brachiation. *Journal of Experimental Biology*. 200: 3013–3020.

309 Chang, Y-H., J. Bertram & D. Lee (2000) External Forces and Torques Generated by the Brachiating  
310 White-Handed Gibbon (*Hylobates lar*). *American Journal of Physical Anthropology*. 113:201–216

311 Channon, A., M. Günther, R. Crompton & E. Vereecke (2009) Mechanical constraints on the  
312 functional morphology of the gibbon hind limb. *Journal of Anatomy*. 215: 383–400.

313 Channon, A., R. Crompton, M. Günther, K. D’Août, E. Vereecke (2010a) The Biomechanics of Leaping  
314 in Gibbons. *American Journal of Physical Anthropology*. 143: 403–416.

315 Channon, A., M. Günther, R. Crompton & E. Vereecke (2010b) Muscle moment arms of the gibbon  
316 hind limb: implications for hylobatid locomotion. *Journal of Anatomy*. 216: 446–462.

317 Channon A., M. Günther, R. Crompton, K. D’Août, H. Preuschoft & E. Vereecke (2011a) The effect of  
318 substrate compliance on the biomechanics of gibbon leaps. *Journal of Experimental Biology*. 214:  
319 687-696.

320 Channon, A., J. Usherwood, R. Crompton, M. Günther & E. Vereecke (2011b) The extraordinary  
321 athletic performance of leaping gibbons. *Biology Letters*. doi:10.1098/rsbl.2011.0574.

322 Fiers, P., D. De Clercq, V. Segers & P. Aerts (2013) Biomechanics of human bipedal gallop: asymmetry  
323 dictates leg function. *Journal of Experimental Biology*. 216: 1338-1349.

324 Fleagle, J. (1976) Locomotion and posture of the Malayan siamang and implications for hominid  
325 evolution. *Folia Primatologica*. 26: 245–269.

326 Fletcher J & B. MacIntosh (2015) Achilles tendon strain energy in distance running: consider the  
327 muscle energy cost. *Journal of Applied Physiology*. 118: 193-199.

328 Frey, H. (1913) Der Musculus Triceps Surae in der Primatenreiche. *Morphologische Jahrbuch*,, 47 : 1-  
329 191.

330 Full, R. & D. Koditscheck (1999) Templates and anchors: neuromechanical hypotheses of legged  
331 locomotion on land. *Journal of Experimental Biology*. 202: 3325–3332.

332 Geyer, H., A. Seyfarth & R. Blickan (2006) Compliant leg behaviour explains basic dynamics of walking  
333 and running. *Proceedings of the Royal Society (London)*,B. 273: 2861-2867.

334 Gittins, S. (1983) Use of the forest canopy by the agile gibbon. *Folia Primatologica*. 40: 134–144.

335 Hannah, J. a D. Schmitt (2011) Interpreting the Role of Climbing in Primate Locomotor Evolution: Are  
336 the Biomechanics of Climbing Influenced by Habitual Substrate Use and Anatomy? *International*  
337 *Journal of Primatology*, 32 : 430-444.

338 Hof, A., J. Van Zanwijk & M. Bobbert (2002) Mechanics of human triceps surae muscle in walking,  
339 running and jumping. *Acta Physiologica Scandinavica*. 174: 17-30.

340 Hunt, K. (2016) Why are there apes? Evidence for the co-evolution of ape and monkey  
341 ecomorphology. *Journal of Anatomy*. 228: 630–685.

342 Ker, R., M. Bennett, S. Bibby, R. Kester & R.McN. Alexander (1987) The spring in the arch of the  
343 human foot. *Nature*. 325: 147-149.

344 Lai, A., A. Schache, Y. Lin & Marcus G. Pandy (2014) Tendon elastic strain energy in the human ankle  
345 plantar-flexors and its role with increased running speed. *Journal of Experimental Biology*. 217: 3159-  
346 3168.

347 Leardini, A. & J. O’Connor (2002) A model for lever-arm length calculation of the flexor and extensor  
348 muscles at the ankle. *Gait a Posture*. 15: 220-229.

349 Lichtwark, G. & A. Wilson (2005) In vivo mechanical properties of the human Achilles tendon during  
350 one-legged hopping. *Journal of Experimental Biology*: 208: 4715-4725.

351 Lichtwark, G. & A. Wilson (2006) Interactions between the human gastrocnemius muscle and the  
352 Achilles tendon during incline, level and decline locomotion. *Journal of Experimental Biology*. 209:  
353 4379-4388.

354 Lieberman, D (2012) Those feet in ancient times. *Nature*. 483: 550-551.

355 Lovejoy C., B. Latimer, G. Suwa, B. Asfaw & T. White (2009a) Combining Prehension and Propulsion:  
356 The Foot of *Ardipithecus ramidus*. *Science*. 326: 72e1-72e8.

357 Lovejoy C., G. Suwa, S. Simpson, J. Matternes & T. White (2009b) The Great Divides: *Ardipithecus*  
358 *ramidus* Reveals the Postcrania of Our Last Common Ancestors with African Apes. *Science*. 326: 100-  
359 106.

360 Maganaris, C., V. Baltzopoulos & A. Sargeant (2000) In vivo measurements-based estimations of the  
361 human Achilles tendon moment arm. *European Journal of Applied Physiology*. 83: 363-369.

362 Michilsens, F., K. D'Août & P. Aerts (2011) How Pendulum-Like Are Siamangs? Energy Exchange  
363 During Brachiation. *American Journal of Physical Anthropology*. 154: 581-591.

364 Michilsens, F. K. D'Août, E. Vereecke & P. Aerts (2012) One step beyond: Different step-to-step  
365 transitions exist during continuous contact brachiation in siamangs. *Open Biology*. doi:  
366 10.1242/bio.2012588

367 Marsh, R., D. Ellerby, J. Carr, H. Henry & C. Buchanan (2004) Partitioning the Energetics of Walking  
368 and Running: Swinging the Limbs Is Expensive. *Science*. 303: 80-83.

369 Myatt, J., R. Crompton & S. Thorpe (2011) Hindlimb muscle architecture in non-human great apes and  
370 a comparison of methods for analysing inter-species variation. *Journal of Anatomy*. 219: 150-166.

371 Preuschoft, H. & B. Demes (1984) Biomechanics of brachiation. In *The Lesser Apes: Evolutionary And*  
372 *Behavioral Biology* (eds.: H. Preuschoft, D. J. Chivers, W. Y. Brockelman & N. Creel). pp. 96-118.  
373 Edinburgh University Press.

374 Preuschoft H., H. Witte & B. Demes (1992) Biomechanical factors that influence overall body shape of  
375 large apes and humans. In: *Topics in Primatology, Vol. 3 Evolutionary Biology, Reproductive*  
376 *Endocrinology and Virology* (eds Matano S, Tuttle RH, Ishida H, Goodman M), pp. 259–289. University  
377 of Tokyo Press.

378 Sati, J. & J. Alfred (2002) Locomotion and posture in Hoolock gibbon. *Ann. For.* 10: 298-306.

379 Standing, S. (2016) *Gray's Anatomy: The Anatomical Basis of Clinical Practice* (ed. 41). Elsevier.

380 Swindler, D. & C. Wood (1973) *An atlas of primate gross anatomy. Baboon, chimpanzee and men.*  
381 University of Washington Press.

382 Thorpe, S. & R. Crompton (2006) Orangutan Positional Behavior and the Nature of Arboreal  
383 Locomotion in Hominoidea. *American Journal of Physical Anthropology*. 131: 384–401.

384 Thorpe, S., Crompton, R., Günther, M., Ker, R. & Alexander, R. McN. (1999) Dimensions and Moment  
385 Arms of the Hind- and Forelimb Muscles of Common Chimpanzees (*Pan troglodytes*). *American*  
386 *Journal of Physical Anthropology*. 110: 176-199.

387 Thorpe S, R. Holder & R. Crompton (2007) Origin of human bipedalism as an adaptation for  
388 locomotion on flexible branches. *Science*. 316: 1328–1331.

389 Uchida, T., J. Hicks, C. Dembia, & S. Delp (2016) Stretching your energetic budget: how tendon  
390 compliance affects the metabolic cost of running. *PloSOne*. DOI:10.1371/journal.pone.0150378.: 1-  
391 19.

392 Usherwood, J. & J. Bertram (2003) Understanding brachiation: insight from a collisional perspective.  
393 *Journal of Experimental Biology*. 206: 1631-1642.

394 Usherwood, J., S. Larson & J. Bertram (2003) Mechanisms of Force and Power Production in  
395 Unsteady Ricochet Brachiation. *American Journal of Physical Anthropology*. 120: 364–372

396 Vereecke, E. & P. Aerts (2008) The mechanics of the gibbon foot and its potential for elastic energy  
397 storage during bipedalism. *Journal of Experimental Biology*. 211: 3661-3670.

398 Vereecke, E. & A. Channon (2013) The role of hind limb tendons in gibbon locomotion: springs or  
399 strings? *Journal of Experimental Biology*. 216: 3971-3980.

400 Vereecke, E., K. D'Août, R. Payne & P. Aerts (2005a) Functional analysis of the foot and ankle  
401 myology of gibbons and bonobos. *Journal of Anatomy*. 206: 453-476.

402 Vereecke, E., K. D'Août, L. Van Elsacker & P. Aerts (2005b) Functional Analysis of the Gibbon Foot  
403 During Terrestrial Bipedal Walking: Plantar Pressure Distributions and Three-Dimensional Ground  
404 Reaction Forces. *American Journal of Physical Anthropology*. 128: 659-669.

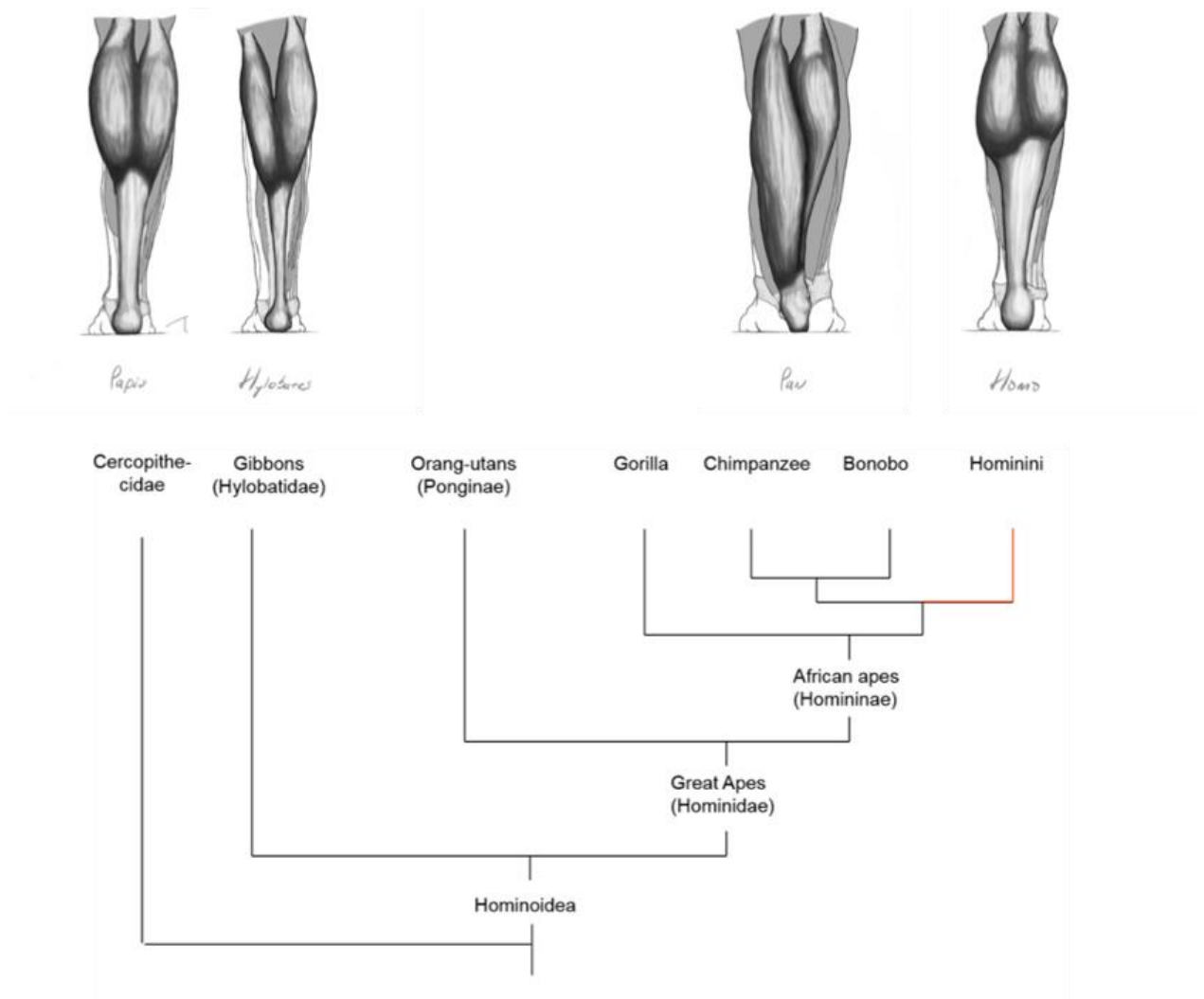
405 Vereecke, E., K. D'Août, & P. Aerts (2006a) Locomotor versatility in the white-handed gibbon  
406 (*Hylobates lar*): A spatiotemporal analysis of the bipedal, tripedal, and quadrupedal gaits. *Journal of*  
407 *Human Evolution*. 50: 552-567.

408 Vereecke, E., K. D'Août, & P. Aerts (2006b) The dynamics of hylobatid bipedalism: evidence for an  
409 energy-saving mechanism? *Journal of Experimental Biology*. 209: 2829-2838.

410 Vereecke, E., K. D'Août, & P. Aerts (2006c) Speed modulation in hylobatid bipedalism: A kinematic  
411 analysis. *Journal of Human Evolution*. 51: 513-526.

412 Willems, P., G. Cavagna & N. Heglund (1995) External, internal and total work in human locomotion.  
413 *Journal of Experimental Biology*. 198: 379-393.

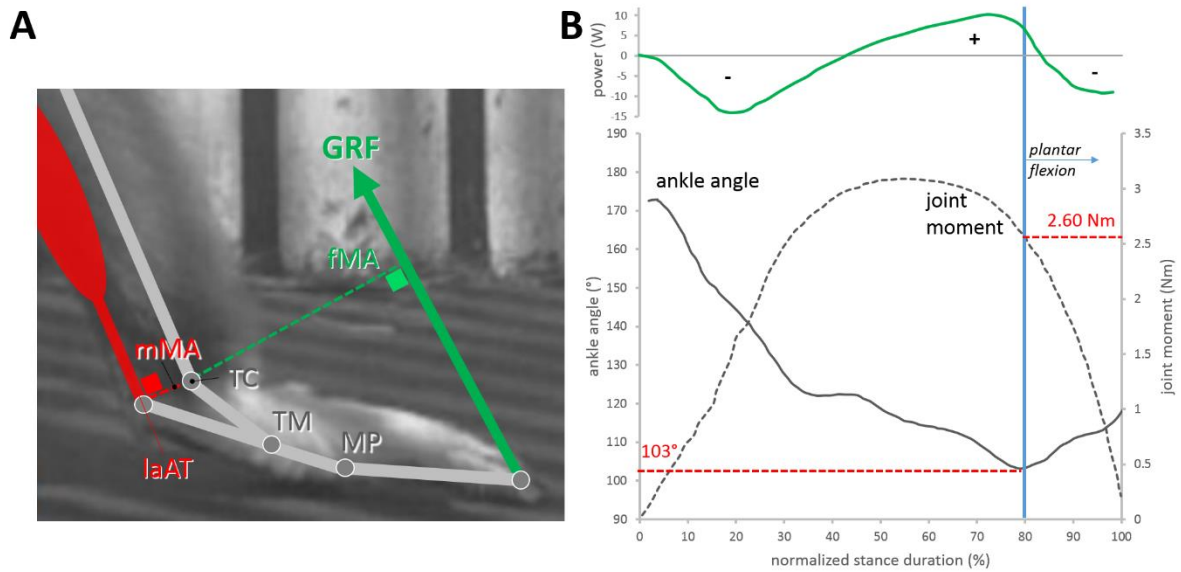
414 Woledge, R., N. Curtin & E. Homsher (1985) *Energetic aspects of Muscle contraction*. Academic Press.  
415  
416  
417  
418



420

421 Figure 1 : Phylogenetic tree of the Catarrhini, with dorsal views of the baboon, gibbon, chimpanzee  
422 and human lower leg showing the Achilles tendon and the gastrocnemius muscle (anatomical  
423 drawings: courtesy of Timo Van Leeuwen).

424



426

427 Figure 2 A: Schematic representation of the lower leg and foot of the white-handed gibbon (dark grey  
 428 sticks) at the instant of initial foot contact during bipedal 'grounded' running (background: still frame  
 429 of a video sequence). The ankle (talocrural) (TC), tarsometatarsal (TM) and metatarsophalangeal (MP)  
 430 joints are shown. The moment arm (fMA) of the ground reaction force (GRF, green arrow) and the  
 431 moment arm (mMA) of the balancing force acting along the Achilles tendon, both with respect to the  
 432 ankle joint, are indicated. The triceps surae and its Achilles tendon are schematically represented in  
 433 red. The fMA is the perpendicular distance from the TC to the GRF; the mMA from the TC to the line  
 434 of action of the Achilles Tendon (laAT). B: *Upper panel*; instantaneous mechanical power of the BCOM  
 435 during stance. When positive, energy is being added to the BCOM. When negative, BCOM energy  
 436 dissipates. The vertical blue line indicates the instant of transition from ankle dorsi-flexion to ankle  
 437 plantar-flexion (= extension of the ankle joint). For the largest part, plantar flexion (recoil eventually  
 438 adding energy) occurs when, overall, whole-body energy decreases (see text). *Lower panel*; average  
 439 ankle joint angle (solid curve; left vertical axis) and average joint moment of the GRF at TC (dashed  
 440 curve; right vertical axis) are given as a function of normalized stance time (0% = initial foot contact;  
 441 100% = toe off) in the white-handed gibbon. This plantar flexion represents the foot push-off which  
 442 can partially be powered by the release of strain energy stored in the Achilles tendon. At this transition,  
 443 the ankle joint angle equals 103°, while the according joint moment is 2.60 Nm (for more explanation:  
 444 see text). (Based on Vereecke and Aerts, 2008; see also Supplementary Material for more details in  
 445 methods).

## SUPPLEMENTARY MATERIAL

### 1) Achilles tendon anatomy of gibbons

Gibbon cadavers were obtained from animals that had died in captivity via collaboration with different zoos and institutes in Europe. Fourteen fresh-frozen cadavers were dissected to study the properties of the Achilles tendon (see further; Material properties). The sample consisted of different genera and species: *Hylobates lar* (n=6), *Hylobates moloch* (n=2), *Hylobates pileatus* (n=2) and *Symphalangus syndactylus* (n=4). A well-developed Achilles tendon was observed in each dissected specimen (unilateral sampling, see Fig. 1).

In the context of other projects, we also dissected several ape specimens (Vereecke et al. 2005a: 3 gibbons and 2 bonobos) but without full quantification of the Achilles tendon anatomy or material properties.

We always observed a well-developed Achilles tendon in the gibbon sample, amounting to on average 76% of the total muscle-tendon unit length (Table 1). In contrast, we only found a short Achilles tendon in the bonobo specimens, amounting to 4-8% of the muscle-tendon unit length and without externally visible tendon. During our dissections, we also noted that both the (short) bonobo and (long) gibbon Achilles tendon invariably insert onto the tuber calcanei and are not continuous with the plantar aponeurosis.



Figure 1 : Triceps surae of a gibbon

Table 1. Measurements of the triceps surae complex in Hylobatidae.

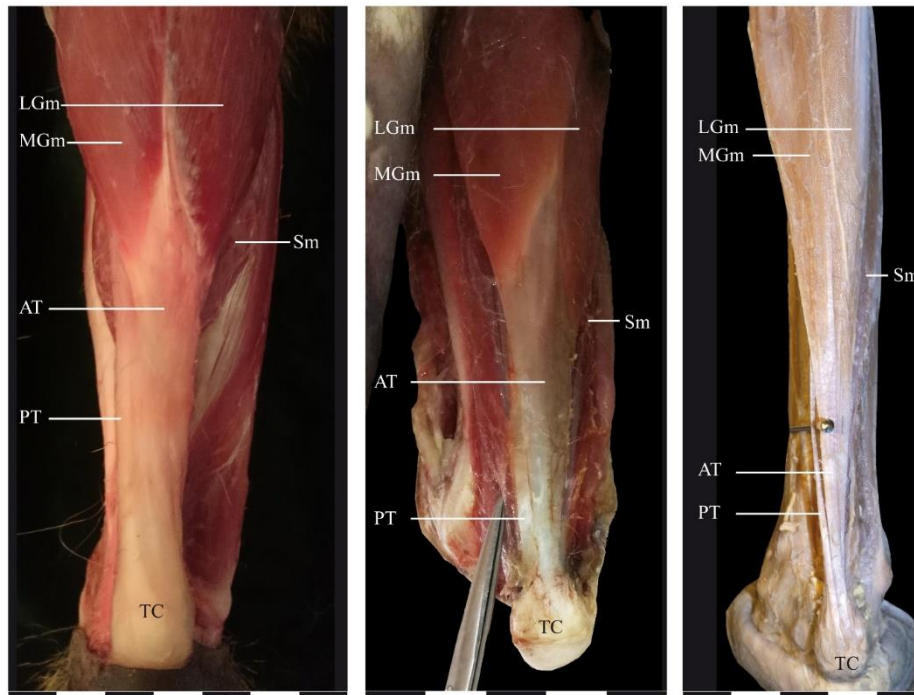
N=14 (Vereecke & Channon 2013)	Average	Standard deviation
Triceps surae FL (mm)	31	7
Triceps surae MTU (mm)	183	21
Achilles tendon CSA (mm <sup>2</sup> )	10	4
Achilles tendon TL (mm)	139	23
Achilles tendon ETL (mm)	74	12
TL/MTUL	0.76	

Legend: MTU, muscle-tendon unit length; CSA, cross-sectional area; TL, tendon length; ETL, external tendon length.

### 2) The Achilles tendon in cercopithecoids

The Achilles tendon of eight cercopithecoids, covering phylogeny and including both terrestrial as well as arboreal species, were investigated (ranked from more terrestrial to more arboreal): *Theropithecus gelada* (gelada baboon), *Papio anubis* (olive baboon), *Macaca maura* (Moor macaque), *Macaca mulatta* (rhesus monkey), *Semnopithecus entellus* (Hanuman langur), *Colobus guereza kikuyensis* (mantled guereza), *Colobus spec.*, *Trachypithecus francoisi* (François' leaf monkey).

Three *Papio anubis* and one *Macaca mulatta* cadavers were obtained from animals that died in captivity at the CNRS Primatology Station (Rousset, FR) and had been preserved on site in a freezer at -18°C. One *Colobus* was obtained from an animal that died in captivity at the Museum National d'Histoire Naturelle (Paris), preserved in its collection in formaldehyde. Specimens were all adult. We dissected the specimens on site and took linear measurements of the hind limb musculature using a digital calliper (according to Vereecke & Channon, 2013). A well-developed Achilles tendon was observed in each specimen within this cercopithecoid sample, amounting to 38% to 52% of the total muscle-tendon unit length (Table 2). In all specimens, the Achilles tendon firmly inserted on the posterior side of the tuber calcanei.



**Figure 2.** Triceps surae and its distal attachments in the right lower leg of (from left to right) olive baboon, rhesus monkey and colobus sp. in posterior view. Legend: LGm, Lateral gastrocnemius muscle; MGm, Medial gastrocnemius muscle; Sm, Soleus muscle; AT, Achilles tendon; PT, Plantaris tendon; TC, Tuber calcanei. Scales in cm.

**Table 2.** Measurements of the triceps surae complex in the baboon, the macaque and the colobus.

	<i>Papio anubis</i>			<i>Macaca mulatta</i>	<i>Colobus</i> sp.
	sp. 1	sp. 2	sp. 3	sp. 4	sp. 5
Triceps surae MTU (mm)	227	383	201	186	143
Achilles tendon TL (mm)	111	167	105	72	54
Achilles tendon ETL (mm)	84	111	75	49	45
TL/MTU	0.49	0.44	0.52	0.39	0.38

Legend: MTU, muscle-tendon unit length; TL, tendon length; ETL, external tendon length.

Visual inspection of the Achilles tendon was done for *Theropithecus gelada*, *Macaca maura*, *Semnopithecus entellus*, *Colobus guereza kikuyensis*, and *Trachypithecus francoisi*, obtained from the zoo of Besançon (FR). The skin was opened along the dorsal side of the lower leg and dorsal view photographs were taken for us by dr. Mélanie Berthet. Unfortunately, linear measures were not taken on the cadavers, but a well-developed Achilles tendon, firmly attached to the heel bone, is also clearly



seen in these species. Estimated from the photographs, in each specimen about 50% of the total muscle-tendon unit length is taken by the Achilles tendon.



Figure 3: Triceps surae and its distal attachments in the lower leg of several cercopithecoids :(A) *Gelada baboon*; (B) *Moor macaque*; (C) *Hanuman langur*; (D) *mantled guereza*; (E) *François' leaf monkey*.

### 3) Information on the source data

#### *Inverse Dynamics*

Inverse dynamics was used to determine the ankle joint moment throughout the stance phase which, in turn, was then used to calculate the loading of the Achilles tendon. The kinematical data (high speed video recordings, 250Hz) and the dynamics data (ground reaction forces and plantar pressure distribution, 250Hz) were collected for a group of *Hylobates lar* specimens at the Animal Park of Planckendael (BE). The data specifically used for this study are the average profiles of 8 representative strides of one male *H. lar* (6.3 kg; see also 'Moment arms') selected on the basis of steadiness, speed, and position regarding the camera (perfect sagittal view) from a much larger data set. The representativeness of this sample (intra- and interindividual) is argued in Vereecke and Aerts (2008). The ground reaction force data and the position of the centre of pressure are the

averages of the profiles of 32 cycles extracted for the same individual and for the same speed range of the large data set collected for and analysed in Vereecke et al. (2005b). The full details concerning the data used for the inverse dynamics calculations are published in Vereecke et al. (2005b) and Vereecke and Aerts (2008).

#### *Moment arms*

In order to calculate the loading of the Achilles tendon throughout stance, moment arms of the ground reaction force and the balancing force from the triceps surae with respect to the ankle joint are needed. Combining the kinematical and plantar pressure data provided accurate moment arm profiles for the ground reaction force. The moment arm profile for the Achilles tendon was determined for the ankle range of motion observed during stance by means of the tendon travel method. For the full details of the procedure we refer to Channon et al. (2010). Several species were used in this study. For the present integration and re-analysis we used, however, the results for the *H. lar* individual used for the kinematical and dynamical experiments. This animal died a natural death.

#### *Material properties*

An Instron material testing machine was used to impose dynamic loading-cycles on the Achilles tendon of 14 gibbons (10 *Hylobates spec.*, 4 *Symphalangus spec.*, 8 male, 6 female, age ranging from 9 to 35 years, 5 specimens were labelled only as 'adult') obtained from zoos and animal parks (n= 9) and museums (n = 5). Load-controlled sine wave-cycles at the frequency mimicking that of the loading-defomation cycles occurring during stance were used. Tendon stiffness is obtained from the slope of linear loading part of the load-deformation cycles. Given the diversity of the sample, average stiffness is used for the present study. Hysteresis is determined as the percentage difference in the area under respectively the loading and unloading parts of the load-deformation cycles. As for the stiffness, average hysteresis is used. The full details of the calculation of the material properties of the Achilles tendon are given in Vereecke & Channon (2013).

## **References**

- Channon, A., M. Günther, R. Crompton & E. Vereecke (2010) Muscle moment arms of the gibbon hind limb: implications for hylobatid locomotion. *Journal of Anatomy*. 216: 446–462.
- Vereecke, E. & P. Aerts (2008) The mechanics of the gibbon foot and its potential for elastic energy storage during bipedalism. *Journal of Experimental Biology*. 211: 3661-3670.
- Vereecke, E. & A. Channon (2013) The role of hind limb tendons in gibbon locomotion: springs or strings? *Journal of Experimental Biology*. 216: 3971-3980.
- Vereecke, E., K. D'Août,, R. Payne & P. Aerts (2005a) Functional analysis of the foot and ankle myology of gibbons and bonobos. *Journal of Anatomy*. 206: 453-476.
- Vereecke, E., K. D'Août, L. Van Elsacker & P. Aerts (2005b) Functional analysis of the gibbon foot during terrestrial bipedal walking: plantar pressure distributions and three-dimensional ground reaction forces. *American Journal of Physical Anthropology*. 128: 659-669.