

# SCIENTIFIC REPORTS



OPEN

## Impacts of increasing typhoons on the structure and function of a subtropical forest: reflections of a changing climate

Kuo-Chuan Lin<sup>1</sup>, Steven P. Hamburg<sup>2</sup>, Lixin Wang<sup>3</sup>, Chin-Tzer Duh<sup>1</sup>, Chu-Mei Huang<sup>1</sup>, Chung-Te Chang<sup>4</sup> & Teng-Chiu Lin<sup>5</sup>

Due to their destructive and sporadic nature, it is often difficult to evaluate and predict the effects of typhoon on forest ecosystem patterns and processes. We used a 21-yr record of litterfall rates to explore the influence of typhoon frequency and intensity, along with other meteorological variables, on ecosystem dynamics in a subtropical rainforest. Over the past half century there has been an increasing frequency of strong typhoons (category 3;  $>49.6 \text{ m s}^{-1}$ ; increase of 1.5 typhoons/decade) impacting the Fushan Experimental Forest, Taiwan. At Fushan strong typhoons drive total litterfall mass with an average of  $1100 \text{ kg ha}^{-1}$  litterfall typhoon<sup>-1</sup>. While mean typhoon season litterfall has been observed to vary by an order of magnitude, mean litterfall rates associated with annual leaf senescence vary by  $<20\%$ . In response to increasing typhoon frequency, total annual litter mass increased gradually over the 21-year record following three major typhoons in 1994. Monthly maximum wind speed was predictive of monthly litterfall, yet the influence of precipitation and temperature was only evident in non-typhoon affected months. The response of this subtropical forest to strong typhoons suggests that increasing typhoon frequency has already shifted ecosystem structure and function (declining carbon sequestration and forest stature).

Litterfall production and decomposition are important ecosystem processes closely linked to terrestrial ecosystem structure and function e.g., primary productivity<sup>1,2</sup>. Across ten Amazonian tropical forests, net primary productivity (NPP) was consistently about three times of total litterfall<sup>3</sup>, and climate was a key factor influencing both temporal and spatial patterns of litterfall. A study of litterfall among 34 Finnish Scots pine forests reported that climate factors explained 70% of the variation in inter-site litterfall<sup>4</sup>. Among 64 European forests, evapotranspiration, which is largely determined by climate, was the most important factor explaining litterfall variation within conifer forests<sup>5</sup>. The close relationship between climate and litterfall implies that changes in global climate could have profound effects on litterfall and therefore NPP and carbon sequestration.

Tropical cyclones (hurricanes and typhoons) are extreme events that have a significant impact on litterfall rates and biogeochemical processes<sup>6–10</sup>. Tree mortality and defoliation associated with tropical cyclones are major causes of large litterfall events<sup>6,11,12</sup>. Following a tropical cyclone-induced litterfall pulse, litterfall rates typically decline; for how long depends on the magnitude of the damage and the associated recovery rate. Because of the close relationship between litterfall rates and NPP, the recovery of litterfall to pre-cyclone levels has been used as an indicator of ecosystem recovery<sup>13–15</sup>.

Gradual changes in temperature and precipitation, the most widely studied aspects of climate change, can also have major impacts on litterfall through their effects on NPP. In Eurasia where average temperatures are low, increases in average temperature was reported to have a larger positive impact on annual litterfall production than

<sup>1</sup>Taiwan Forestry Research Institute, 53 Nan-Hai Road, Taipei, 10066, Taiwan. <sup>2</sup>Environmental Defense Fund, 18 Tremont Street, Boston, Massachusetts, United States. <sup>3</sup>Department of Earth Sciences, Indiana University-Purdue University Indianapolis, Indianapolis, IN, 46202, USA. <sup>4</sup>Department of Geography, National Taiwan University, No 1 Section 4, Roosevelt Road, Taipei, 10617, Taiwan. <sup>5</sup>Department of Life Science, National Taiwan Normal University, No 88 Section 4, Ting-Chow Road, Taipei, 11677, Taiwan. Correspondence and requests for materials should be addressed to C.-T.C. (email: [changchuante@gmail.com](mailto:changchuante@gmail.com)) or T.-C.L. (email: [tclin@ntnu.edu.tw](mailto:tclin@ntnu.edu.tw))

have increases in precipitation<sup>16</sup>. The long-term litterfall data from a Finnish Scots pine forest showed that July temperatures were positively correlated with annual litterfall rates<sup>17</sup>.

In addition to temperature and precipitation, changes in the intensity and frequency of extreme weather events can also have major impacts on key ecosystem processes, including litterfall<sup>18,19</sup>. Several recent studies indicate that the number of intense tropical cyclones are likely to increase and other studies suggest an overall increase in tropical cyclone frequency<sup>20–23</sup>. Few studies have examined the effect of changes in tropical cyclone frequency and intensity on forests and litterfall in particular. A study in the Northwest Pacific indicates that intense tropical cyclones disproportionately influence litterfall rates<sup>11</sup>, suggesting that any change in cyclone frequency and/or intensity could impact the structure and function of the impacted forests.

For disturbances with return intervals longer than a few decades, such as fire and hurricanes (tropical cyclones originating in the Atlantic), their effects on litterfall dynamics are hard to observe given the paucity of measurements and the period of observed climate changes<sup>24,25</sup>. Observing long-term ecological effects of extreme events requires long-term data on ecological patterns and processes that span numerous extreme events. The long return intervals between cyclones in most regions of the world make acquisition of such a record challenging if not impossible. Examining cyclone disturbance impacts on ecosystem dynamics in regions with frequent cyclone disturbances of varying intensity provides an opportunity to understand the impacts of changing intensities and frequencies on ecosystem structure<sup>26,27</sup>. In addition, small or frequent disturbances could have very different ecological effects from large or rare ecosystem disturbances<sup>28</sup>, yet most cyclone studies focus on large, rare and often-catastrophic cyclone events. Thus, long-term data that captures the impacts of cyclones of varying intensities is critical for developing a comprehensive understanding of disturbance-ecosystem interactions.

Many studies report global shifts in patterns of cyclone activities (e.g., from lower to higher latitudes<sup>29–31</sup>) such that regions currently experiencing infrequent cyclone disturbance may face increasing cyclone frequency or intensity in coming decades. By studying the impacts of cyclone disturbances on ecosystem processes in regions currently experiencing frequent cyclone disturbance it should be possible to project ecological consequences for regions experiencing a change in cyclone frequency.

Taiwan, a subtropical island of 36 000 km<sup>2</sup> located in the Northwest Pacific, experiences among the highest frequency of tropical cyclones globally<sup>25</sup> (Fig. 1a), making it an ideal site for examining the relative influence of climate factors (precipitation and temperature) and extreme events (tropical cyclones) on ecosystem processes. On average around three typhoons make landfall annually in Taiwan, with approximately 60% being  $\geq$  Saffir-Simpson category 3 events<sup>25,32</sup>. Since 1992 litterfall has been collected on a monthly basis at the Fushan Experimental Forest (FEF) in northeastern Taiwan, and between 1992 and 2012 the forest has been impacted by more than 40 typhoons. We used this dataset to assess temporal patterns of litterfall in relation to typhoon characteristics and other climate variables as well as to consider the potential influence of shifting typhoon frequency and intensity on forest NPP and carbon sequestration. We specifically addressed the following questions.

1. How strongly does typhoon disturbance influence temporal litterfall patterns?
2. Is there evidence that a change in typhoon frequency and intensity is likely to affect litterfall rates, NPP and carbon sequestration?
3. What is the relative importance of typhoons versus other major climate variables, precipitation and temperature, on litterfall rates?

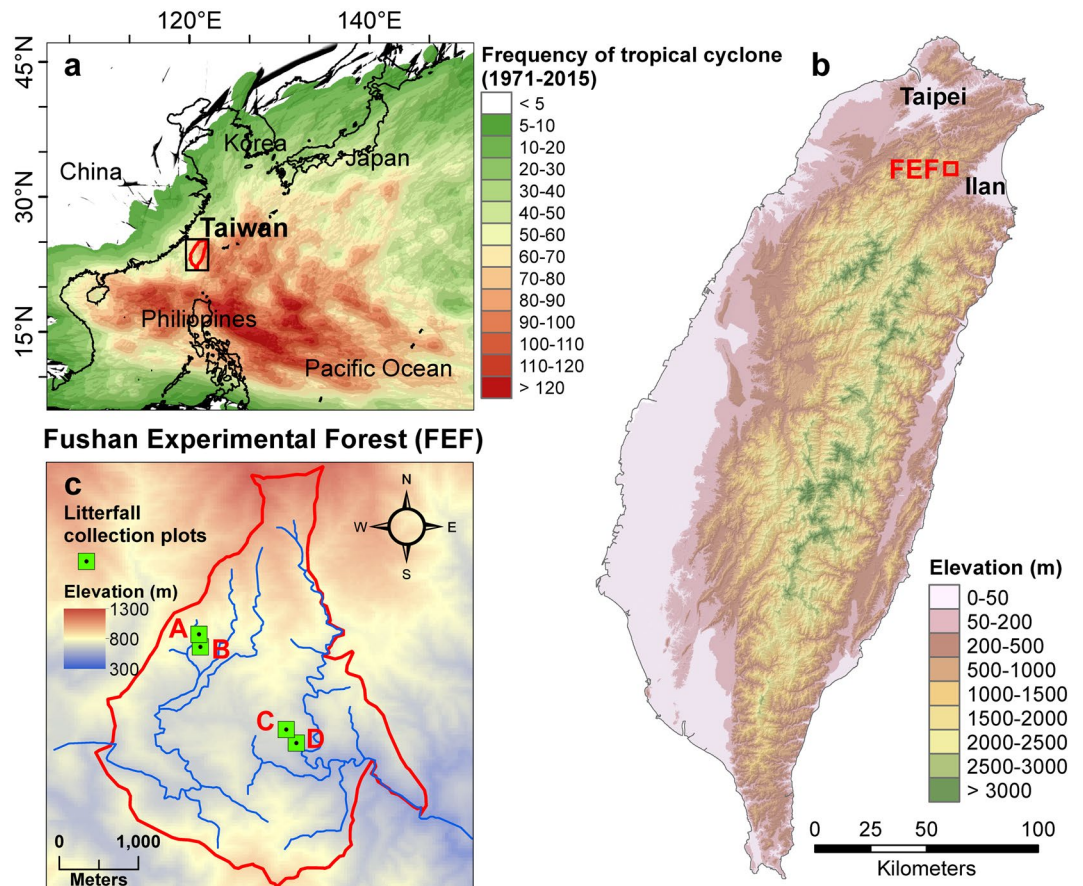
## Results

**Temporal pattern of typhoons and major climate variables.** Over the last three decades (1981–2010) 44 typhoons affected FEF, with a mean of 1.5 typhoons per year. Among these typhoons 17 were  $\geq$  category 3, with a mean frequency of 0.57 yr<sup>-1</sup>. During the period examined there were significant increases in both total number and number of major typhoons ( $\geq$  category 3) affecting FEF, with an increase of approximately 0.4 yr<sup>-1</sup> for all typhoon categories and 0.15 yr<sup>-1</sup> for major typhoons (Fig. S1a).

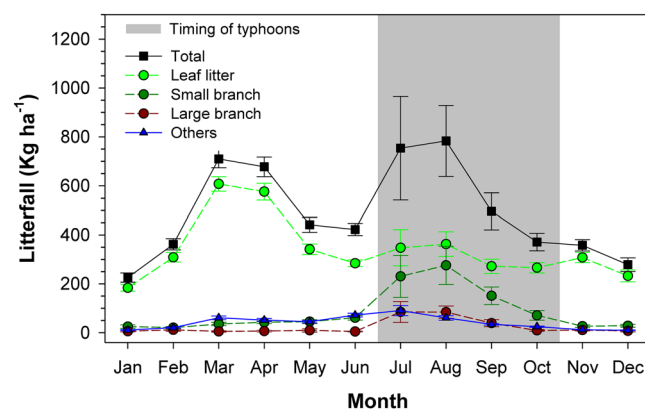
Annual mean temperature at FEF showed a small but significant decrease over the last two decades ( $P = 0.045$ ; Fig. S1b), while the number of rainy days increased significantly, 2 days yr<sup>-1</sup> (Fig. S1c). The number of days with various rainfall intensities (<10 mm, 10–50 mm, 50–130 mm, 130–200 mm and >200 mm), did not change over the two-decade record except for an increase in the number of days with rainfall <10 mm ( $P = 0.044$ ; Fig. S1d).

Two annual total litterfall peaks of similar magnitude were observed, one between March and April (spring peak), and one between July and August (and September to a lesser degree, summer peak) (Fig. 2). The spring peak consisted mainly of leaf litter (~80%) with very low inter-annual variation (<20%). In contrast, the summer peak, associated with typhoons, varied by more than an order of magnitude over the 21-year record and the proportional contribution of leaf litter was lower, though still >60% (Fig. 2). Unlike the pattern of total litterfall, there was only one distinct peak in leaf litter mass that occurred between March and April at  $1155 \pm 280$  kg ha<sup>-1</sup> (Fig. 2).

**Relationship between typhoons and litterfall.** We observed three extreme litterfall events (>2 000 kg ha<sup>-1</sup>), all were associated with major typhoons (Fig. 3), as well as six major events (>mean  $\pm$  2 SD, or 1 310 kg ha<sup>-1</sup>) that were associated with five major typhoons and two mild typhoons in years that had no major typhoon (Fig. 3). Five major typhoons were not associated with major litterfall events (Fig. 3). Three of them occurred after other major typhoons in the same year and one was associated with a litterfall event that fell slightly short of the cut off for a major event (Fig. 3). The one that was not associated with a litterfall event (Typhoon Zeb in 1998) was associated with a typhoon that did not make landfall and barely met the criteria of a typhoon that affected FEF (typhoons with the center passing within 100 km from FEF, see Methods).

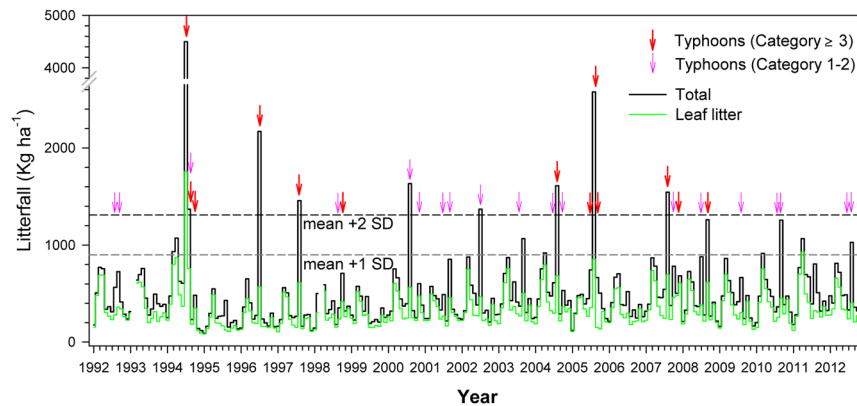


**Figure 1.** Location map of the Fushan Experimental Forest (FEF). The frequency of tropical cyclones in Northwest Pacific (a), location of FEF (b), and litterfall collection plots within FEF (c). The countries' boundary map was generated from the map database in ArcGIS v. 10.3<sup>53</sup>. The frequency of tropical cyclone was presented in ArcGIS based on the grid map acquired from Joint Typhoon Warning Center (JTWC)<sup>54</sup>. The elevation maps of FEF and Taiwan (in background) were created based upon 20 m digital elevation model (DEM) obtained from Data.GOV.TW<sup>55</sup>. The litterfall collection plots were built and plotted using Tools in ArcGIS by their coordinates.



**Figure 2.** The monthly mean litterfall between 1992 and 2012. The error bars indicate one standard deviation. Gray area indicates typhoon occurring period.

There was a significant positive relationship between number of typhoons and litterfall mass in each year ( $P < 0.05$  for total and all components except large branches, Fig. 4). The number of major typhoons explained 45% of the inter-annual variability in total litterfall and 71% of the variability of small branches (Fig. 4), yet adding the number of mild typhoons did not improve the explanatory power of the regression models. The models suggest



**Figure 3.** Monthly litterfall during 1992–2012 with highlights of minor and major peaks and typhoons of different intensity categories based on Saffir-Simpson scale. Minor peaks and major peaks refer to monthly total litterfall greater than long-term monthly mean ( $490 \text{ kg ha}^{-1}$ ) plus one standard deviation ( $410 \text{ kg ha}^{-1}$ ) and two standard deviations.

that the influence of each major typhoon leads to  $1\,100 \text{ kg ha}^{-1}$  of additional litterfall, with approximately 50% of it from small branches. In contrast to total litterfall and small branches, inter-annual variability of leaf litter was better explained by total number of typhoons as compared to major typhoons alone. On average each additional typhoon added  $540 \text{ kg ha}^{-1}$  of leaf litter ( $R^2 = 0.46$ ,  $P < 0.001$ ).

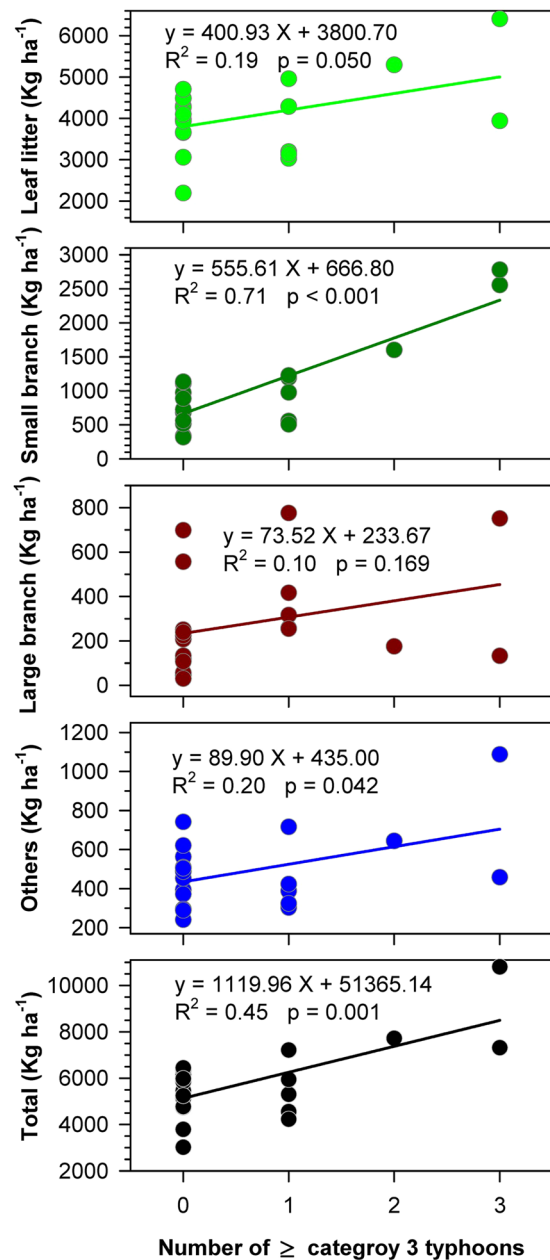
**Relationship between major climate variables and litterfall.**  $\text{Wind}_{\text{max}}$  was a significant predictor in the ARIMA models for total litterfall and all litterfall components of the entire dataset (Table S1), and there was no time lag between  $\text{Wind}_{\text{max}}$  and litterfall based on the cross-correlation analysis (Table S2).  $\text{Temp}_{\text{mean}}$  was also a significant predictor for total litterfall and all litterfall components except large branches (Table S1), and there was a one-to-three month lag in the relationship between temperature and litterfall (Table S2).  $\text{Rain}_{\text{max}}$  was a significant predictor for total litterfall and all litterfall components except flowers and fruits (i.e., the “others” component) (Table S1) and there was no time lag in the relationship (Table S2). The ARIMA models fit the 1992–2005 data well, with  $R^2$  ranging from 0.77 (leaf litter) to 0.98 (large branches; Table S1 and Fig. S2). The comparisons between model predictions and observed values for the 2006–2012 period were strong, with  $R^2$  (NSE) ranging from 0.71 (0.70) for others to 0.83 (0.77) for small branches, and the RMSE was only slightly higher than for the fitted results (i.e., 1992–2005) (Fig. S2).

When typhoon-affected months were excluded,  $\text{Wind}_{\text{max}}$  was no longer a significant predictor for any of the litterfall components and only  $\text{Temp}_{\text{mean}}$  and  $\text{Rain}_{\text{max}}$  were significant predictors (Table S3).  $\text{Temp}_{\text{mean}}$  was a significant predictor for all litterfall components and there was a time lag (1–3 months) between temperature and litterfall (Table S2).  $\text{Rain}_{\text{max}}$  was a significant predictor for leaf litter, small branches and total litterfall (Table S3). The ARIMA models also fit the 1992–2005 data reasonably well when typhoon-affected months were excluded, with  $R^2$  ranging from 0.74 (total) to 0.97 (large branch; Table S3 and Fig. S3). The  $R^2$  (NSE) for observed against modeled values during 2006–2012 ranged from 0.64 (0.62) for large branches to 0.86 (0.78) for leaf litter (Fig. S3), supporting the validity of the models.

**Litterfall patterns in relation to the 1994 typhoon season.** Nineteen ninetyfour is unique in our 21-year record in that it had the highest annual litterfall ( $10\,800 \text{ kg ha}^{-1}$ ) and a record high number of typhoons (3 major and one mild). It took two years for total litterfall mass to increase to pre-1994 levels. Leaf litter mass took six years to increase to pre-1994 levels and annual peak LAI took 10 years to increase to pre-1994 levels (Fig. 5). Over the 1995–2012 period there were significant increases in total litterfall, leaf litter, and flowers and fruits (i.e., the “other” component) and decreases of large branches, with considerable fluctuation year to year (Fig. 5). However, when examining the entire time series of 1992–2015 there were almost no temporal trends evident among components of litterfall as a result of the effects of the 1994 typhoons (Fig. 5), indicating a significant legacy effect of years with frequent and unusually large typhoons. Both peak LAI (Fig. 5) and the number of typhoons (Fig. S1) increased significantly in the years following the 1994 typhoon season, but the result of multiple regression analysis indicates that only peak LAI was a significant predictor of leaf litter mass ( $R^2 = 0.53$ ,  $P = 0.005$ ). The number of typhoons was a significant predictor of small branch mass ( $R^2 = 0.55$ ,  $P = 0.004$ ) and both peak LAI and number of typhoons were significant predictors of total litterfall mass ( $R^2 = 0.67$ ,  $P < 0.001$ ).

## Discussion

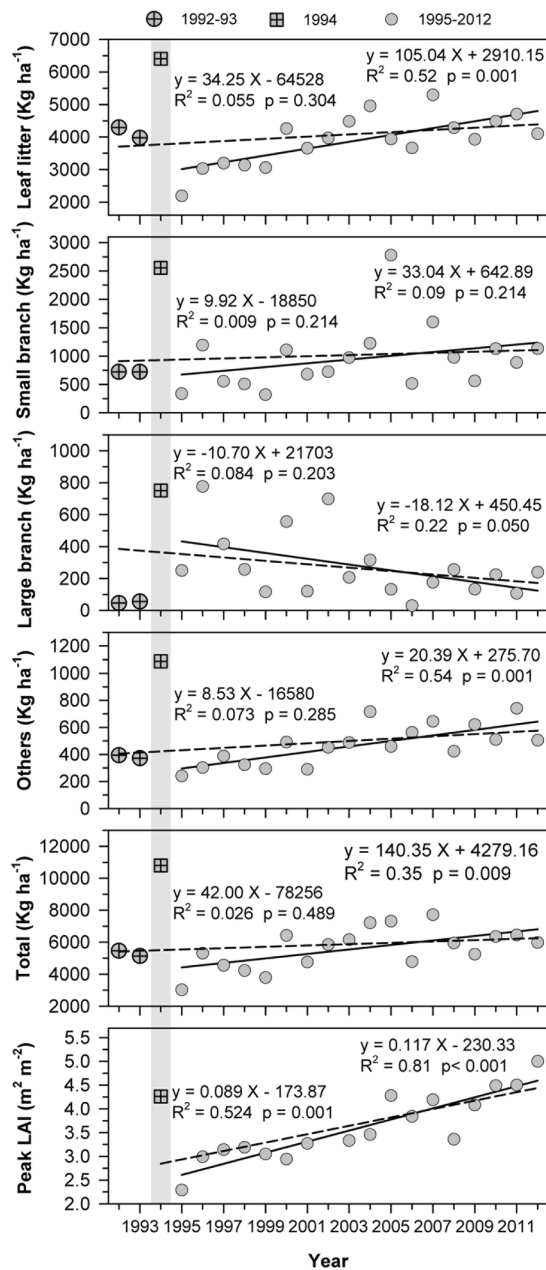
**Typhoons dominated litterfall fluctuation.** Typhoon disturbance clearly dominated temporal fluctuations of litterfall at FEF over two decades. The importance of typhoon disturbance on litterfall dynamics is also evident in the role that  $\text{Wind}_{\text{max}}$  played in predicting litterfall when typhoon affected months were excluded from the cross-correlations and ARIMA models, shifting from the most important predictor to providing no predictability. We observed increases in both typhoon frequency and litterfall. This positive relationship between the numbers of  $\geq$  category 3 typhoons and litterfall combined with the increase in typhoon frequency over the



**Figure 4.** The relationships between annual litterfall components and the number of  $\geq$  category 3 typhoons.

last two decades suggests that the observed increases in litterfall were at least partly due to increases in typhoon frequency.

The loss of a large quantity of leaves ( $540 \text{ kg ha}^{-1} \text{ typhoon}^{-1}$ ) and the production of woody litter ( $550 \text{ kg ha}^{-1}$  per category 3 typhoon) have an important impact on NPP and the carbon stock of the living vegetation. This connection has likely led to this typhoon-impacted forest having very low aboveground biomass,  $200\text{--}300 \text{ Mg ha}^{-1}$ , as compared to  $400\text{--}600 \text{ Mg ha}^{-1}$  of many tropical and subtropical forests with similar precipitation and temperature but no exposure to regular typhoons<sup>33</sup>. The dominance of typhoon disturbance on litterfall fluctuation highlights that when combined with changes in the frequency of typhoons, typhoons are likely to have increasingly pervasive effects on ecosystem functioning (e.g., carbon sequestration, carbon stocks). At FEF the amount of typhoon induced litterfall averages  $1650 \text{ kg ha}^{-1}$  per year, approximately 6% of the aboveground biomass ( $270 \text{ Mg ha}^{-1}$ ). It is unlikely that foliage regrowth will be able to fully keep pace with increasing typhoon-induced foliage losses if the trend of an increase of 4 typhoons per decade continues. Thus, we would predict that the forest would not be able to sequester enough carbon to compensate for the loss in NPP as a result of additional typhoon-induced leaf litter. Our study suggests that shifts in climate extremes, such as typhoon frequency, are likely to have a measureable impact on ecosystem patterns and processes.



**Figure 5.** The patterns of annual litterfall and annual peak leaf area index (LAI) at Fushan Experimental Forest. Dash line includes the entire 21-yr data set and the solid includes only data following the 1994 typhoon season (gray area) in which three category 3 typhoon affected the site.

**Typhoon disturbance and forest development.** The FEF is highly resilient to typhoon disturbance compared to what has been observed in the neotropics. Following typhoons there is rapid recovery of litterfall and canopy leaf area, mostly within one year, with the exception of years with multiple category 3 typhoons. The resilience of the subtropical FEF to typhoon disturbance is also reflected in streamwater chemistry. Following a 1996 category 3 typhoon nitrate concentrations increased three fold but returned to pre-typhoon levels within a week<sup>25</sup>. By contrast streamwater nitrate at the Luquillo Experimental Forest following the 1989 Hurricane Hugo, which was similar in magnitude to the 1996 typhoon at FEF, returned to pre-disturbance levels after 500 days, two orders of magnitude longer than observed at FEF<sup>34</sup>. The high resilience to typhoon disturbance seen at FEF is also observed at a different experimental forest in central Taiwan in which streamwater chemistry took one to three weeks to return to pre-typhoon levels<sup>27</sup>. High resilience is likely common and essential to forests experiencing annual cyclone disturbance. If recovery takes longer than the interval between large disturbances, available nutrients would be rapidly depleted with a concomitant impact on NPP.

Following the intense, but rare 1994 typhoon season, leaf litter took six years to recover and canopy peak LAI recovered in 10 years, partly because the damage associated with the 1994 typhoons was severe and partly because other typhoons affected the forest during the period. These longer recovery times are consistent with the idea

that rare disturbance events take longer to recover from. A comparison of the height of trees that experienced typhoon-induced uprooting or bole-snapping trees versus those undamaged suggests that typhoon disturbance creates relatively constant stress on taller trees that drives the short stature of the FEF forest, despite being an old-growth forest<sup>25</sup>. Although it is impossible to do controlled experiments on typhoon impacts, a comparison between FEF and forests in the same region but further inland and thus less impacted by typhoons provides some insight. A forest 10 km from FEF with similar geology, topography, slope aspect and steepness, and prevailing climate regime experiences considerably lower winds. Predictably the FEF had considerably lower canopy height (15 m for the tallest 10% of trees) and biomass (270 Mg ha<sup>-1</sup>) versus the inland site (20 m and 420 Mg ha<sup>-1</sup>)<sup>35</sup>. It seems reasonable to expect that, in the absence of typhoon disturbance, older trees at FEF would be taller and forest aboveground biomass would be greater. On the other hand, if typhoon frequency and/or intensity increase it could further negatively impact the stature, biomass accumulation and carbon sequestration of the FEF.

**Major climate variables and litterfall pattern.** The significant positive relationship between litterfall and temperature and rainfall in the cross-correlations and ARIMA models indicates that temperature and precipitation also affect litterfall patterns, though most likely for different reasons. The positive relationship between mean temperature and litterfall likely reflects increased tree growth with higher temperatures, and the time lag reflects the delayed response in LAI and thus litterfall. In contrast, the positive relationship between Rain<sub>max</sub> and litterfall likely reflects increased damage to trees associated with intense rainfall, which is consistent with the lack of a time lag in this relationship. There is no evidence that tree growth is water limited; FEF receives an annual average of more than 4000 mm y<sup>-1</sup> over >200 days<sup>36</sup>.

**Ecological implications.** From our long-term litterfall record it appears that the impact and delayed recovery from the 1994 typhoons were unusual. Rare but extreme disturbances such as what we observed in 1994 and have been observed elsewhere, e.g., the 1938 hurricane in northeastern United States, the 1989 Hurricane Hugo in Caribbean, and the 2006 tropical cyclones Monica and Larry in Australia. These events have been the focus of a relatively large number of studies<sup>37–40</sup>. While these major cyclone events do have a large influence on ecosystem patterns and processes, our long-term data indicate that the resulting ecological consequences are not generalizable to more routine cyclone patterns. Cyclone-ecosystem interactions seen through the lens of extreme cyclones must be interpreted with great caution. Even more importantly, impacts on ecosystems that are rarely or only occasionally influenced by cyclones (e.g., eastern US and Puerto Rico, respectively) cannot be extrapolated to ecosystems that are impacted frequently (e.g., Taiwan).

Except for the 1994 extraordinary typhoon season, litterfall and LAI were able to recover in just one year indicating high ecosystem resilience in response “regular” typhoon disturbance<sup>25</sup>. Yet, it would be wrong to infer that forests that are impacted by typhoons annually experience limited effects. Although such forests are capable of recovering from regular typhoon disturbance in one year, as observed at FEF regular typhoon disturbance limits tree growth and stature. Very frequent typhoon disturbances keep the forest from developing the structural characteristics of most old-growth forests (e.g., large trees, low densities); instead, such forests are characterized by short stature and small trees as well as low overall biomass. Frequent typhoon disturbance appears to shift forest development onto a different trajectory, one that could become more common with increased frequency of such disturbances as a result of climate change. If increased cyclone frequency does negatively impact forest carbon stocks there is the potential for positive feedback.

## Methods

**Study site.** The study was carried out at the FEF in northeastern Taiwan (24°34′ N, 121°34′ E) (Fig. 1b). The 10 km<sup>2</sup> FEF is characterized by steep slopes (averaging 35%), and frequent rainfall (>220 days annually)<sup>36</sup>. Its elevation ranges from 670 to 1400 m. In 1992 an 18 m meteorological tower was installed in a clearing in the experimental forest at 670 m above sea level<sup>36</sup>. Between 1993 and 2007, annual precipitation ranged from 2900 to 6650 mm with a mean of 4240 mm<sup>25</sup>. The annual mean temperature was 18.2 °C with a low monthly average of 11.8 °C in February and a maximum in July of 24.1 °C<sup>36</sup>. Relative humidity at FEF is above 90% throughout most of the year. The forest is characterized as a moist subtropical mixed evergreen forest without an observable dormant season.

Within FEF there are 515 vascular plant species belonging to 329 genera and 124 families<sup>41</sup>. The dominant tree species are: *Castanopsis carlesii* var. *sessilis* Nakai, *Machilus thunbergii* (Sieb. et Zucc.) Kostermans, *Engelhardtia raxburghiana* Wall., *Meliosma squamulata* Hance, *Litsea acuminata* (Blume) Kurata, *Diospyros morrisiana* Hance, *Helicia formosana* Hems, and *Pyrenaria shinkoensis* (Hayata) Keng. Common shrubs are mostly *Ardisia quinquegona* Blume, *Blastus cochinchinensis* Lour, *Lasianthus fordii* Hance, and *Meliosma squamulata*<sup>42</sup>. The forest is multistoried with scattered tree ferns and shrubs, and with an herbaceous ground cover of 20% on ridges, 70% on slopes and 80% in the valleys. The bedrock at FEF consists of black argillite of the Oligocene. The soils are coarse-loamy Typic Dystochrepts, with the top 30 cm being very acidic (pH 3.8–5.0), and having a low bulk density (0.5–0.8 Mg m<sup>-3</sup>) and low base saturation (2–5%)<sup>43,44</sup>.

**Typhoon information.** From the typhoon database of the Central Weather Bureau, we calculated the number and intensity of typhoons that affected FEF between 1981 and 2010. A typhoon was considered to have affected FEF if the distance between the typhoon center and FEF was <100 km at any time<sup>29</sup>. This criterion is used because the radius of maximum wind of most typhoons is >100 km.

**Litterfall collection.** Litterfall was collected in two 20 × 20 m plots (A and B) established in 1991 and two more (C and D) established in 1995 (Fig. 1c). The elevations of these plots ranged from 690 to 780 m, with slopes from 21° to 28°, facing south and southwest. The dominant tree species in the plots were similar, with six species (*Castanopsis cuspidate* var. *carlesii*, *Meliosma squamulata* Hance, *Diospyros morrisiana* Hance, *Machilus thunbergii*

Sieb. & Zucc., *Engelhardia roxburghiana* Wall., *Pyrenaria shinkoensis* (Hayata) Keng) accounting for 51–60% of the trees in all four plots. The average diameter at breast height (DBH) of the trees >2 cm was 20 cm (ranging from 16 to 26 cm), mean basal area was 36 m<sup>2</sup> ha<sup>-1</sup> (32–51 m<sup>2</sup> ha<sup>-1</sup>), mean tree height was 11 m (9.4 to 11.6 m), and the mean tree density was 1100 (930–1500) trees ha<sup>-1</sup> in 1991 (Table S4). By 2012, mean DBH increased 7% to 22 cm (19–26 cm;  $P < 0.001$ ) but there was no significant change in tree density or height (Table S4).

Ten 15 cm high, 50 × 50 cm horizontal litterfall traps were established in each plot 1 m above the ground. The sides of the traps were made of wood beveled on the upper edge while the bottoms were constructed of 1 mm mesh nylon netting. In the center of each plot an additional 2 × 5 m 1 mm mesh net was placed on the ground to collect branches with diameters >2 cm. Litterfall was collected once a month and was brought back to the laboratory, dried at 40 °C for 24 h and separated into: foliage, large branches (diameter > 2 cm), small branches (all woody material other than large branches), and other material (mainly flowers and fruits). After litterfall was sorted it was dried to a constant weight at 65 °C. Litterfall was collected from January 1992 and January 1996 through December 2012 for the plots initiated in 1991 and 1995, respectively.

**Leaf area index (LAI) measurements.** LAI was measured at 5 m intervals along a 300-m line transect running along a ridge (800 m) starting in April 1994 using a Li-Cor LAI-2000 Plant Canopy Analyzer<sup>25</sup>. Measurements were taken multiple times annually with every effort to obtain LAI readings before and after typhoon disturbances.

**Data Analysis.** We used regression models to examine patterns of annual precipitation and temperature. Based on mean monthly litterfall between 1992 and 2012, we defined total monthly litterfall (i.e., total of all litterfall components) greater than mean ± 1 SD (standard deviation) but smaller than mean ± 2 SD as minor litterfall peaks and those greater than mean ± 2 SD but less than 2 000 kg ha<sup>-1</sup> as major peaks. The few months with litterfall greater than 2 000 kg ha<sup>-1</sup> were considered extreme peaks. We used regression models to examine the relationship between typhoons and litterfall production using the number of typhoons as the independent variable and litterfall as dependent variable. We defined typhoons with an intensity ≥ category 3 based on Saffir-Simpson scale (maximum wind speed > 49.6 m s<sup>-1</sup>)<sup>45</sup> as major typhoons and those of category 1 or 2 were defined as mild typhoons.

The FEF experienced three major typhoons and one mild typhoon in 1994, the maximum number recorded in a single year since record keeping began in 1958. Canopy leaf area index dropped as much as 2/3 on the ridge<sup>25</sup> and the annual litterfall reached 10 000 kg ha<sup>-1</sup> compared to only 3 000 kg ha<sup>-1</sup> in 1993 when no typhoons affected FEF<sup>11</sup>. Using linear regression models we explored recovery of litterfall mass to pre-disturbance levels to infer forest recovery following the unprecedented 1994 typhoon season. We also used a regression model to examine the relationship between the post-1994 annual litterfall and the peak annual LAI. We did not have peak LAI for 2002 because constant rainfall prevented us from taking measurements prior to the typhoon season.

**Cross-correlation and ARIMA models.** The relationships between monthly litterfall and climate parameters, 1) monthly minimum temperature (Temp<sub>min</sub>), 2) monthly mean temperature (Temp<sub>mean</sub>), 3) monthly maximum temperature (Temp<sub>max</sub>), 4) monthly rainfall, 5) maximum daily rainfall of each month (Rain<sub>max</sub>), and 6) monthly maximum wind speed (Wind<sub>max</sub>) were examined using cross-correlations with time lags up to 3 months. In addition to using the entire dataset, we also conducted the analysis excluding typhoon-impacted months (40 months). The missing gaps (values for typhoon months) were filled with the long-term mean of the same non-typhoon month and considered as the baseline for this study. This is needed for autoregressive integrated moving average (ARIMA) models<sup>46,47</sup>.

We built ARIMA models to evaluate the contribution of climate variables (independent variables) on the time series of litterfall (dependent variable)<sup>17,48</sup>. Because litterfall is highly seasonal, we built seasonal ARIMA models that include both non-seasonal and seasonal autoregressive (p and P), moving average (q and Q) and differencing (d and D) (small letters for non-seasonal and capital letters for seasonal). The pdq and PDQ were iterated to identify the best-fit models and the goodness-of-fit of the models were evaluated through an autocorrelation function (ACF) and partial autocorrelation functions (PACF) of the residuals by the Ljung-Box test with the  $p$ -value > 0.05. The model with the smallest normalized Bayesian information criterion (BIC) was selected as the best-fit model<sup>49</sup>. The significance of the parameters was determined based on the  $t$  statistic exceeding 2 in absolute value<sup>50</sup>. The ARIMA models were constructed using data collected during the 1992–2005 period and then validated for 2006–2012 with the predictions compared to the observed values. The differences between predicted and observed values were evaluated by root mean squared error (RMSE), Nash-Sutcliffe efficiency (NSE), and coefficient of determination (R<sup>2</sup>). RMSE assesses the residual between observed and predicted values, and NSE evaluates model efficiency and predictive power, with the value ranging from negative infinity to one, the closer to one the better the model's performance<sup>51,52</sup>.

## References

1. Miller, G. Dynamics of nutrient cycling in plantation ecosystems, in *Nutrition of Plantation Forest* (eds Boven, G. D. & Nambiar, E. K. S. E. E), p53–78 (Academic Press, London, 1984).
2. Aber, M. *Terrestrial Ecosystems*. (Harcourt Academic Press, New York, 2001).
3. Aragao, L. E. O. C. *et al.* Above- and below-ground net primary productivity across ten Amazonian forests on contrasting soils. *Biogeosci* **6**, 2759–2778 (2009).
4. Starr, M., Saarsalmi, A., Hokkanen, T., Merila, P. & Helmsaari, H. S. Models of litterfall production of Scots pine (*Pinus sylvestris* L.) in Finland using stand, site and climate factors. *For. Ecol. Manage.* **205**, 215–225 (2005).
5. Berg, B. & Meentemeyer, V. Litter fall in some European coniferous forests as dependent on climate: a synthesis. *Can. J. For. Res* **31**, 292–301 (2001).
6. Herbert, D. A., Fownes, J. H. & Vitousek, P. M. Hurricane damage to Hawaiian forest: nutrient supply rate affects resistance and resilience. *Ecology* **80**, 908–920 (1999).



7. Ostertag, R., Scatena, F. N. & Silver, W. L. Forest floor decomposition following hurricane litter inputs in several Puerto Rican forests. *Ecosystems* **6**, 261–273 (2003).
8. Xu, X., Hirata, E. & Shibata, H. Effect of typhoon disturbance on fine litterfall and related nutrient input in a subtropical forest on Okinawa Island, Japan. *Basic Appl. Ecol.* **5**, 271–282 (2004).
9. Wang, H. C., Wang, S. F., Lin, K. C., Lee, P. J. S. & Lin, T. C. Litterfall and element fluxes in a natural hardwood forest and a Chinese-fir plantation experiencing frequent typhoon disturbance in central Taiwan. *Biotropica* **45**, 541–548 (2013).
10. Parsons, S. A., Congdon, R. A., Shoo, L. P., Valdez-Ramirez, V. & Williams, S. E. Spatial variability in litterfall, litter standing crop and litter quality in a tropical rain forest region. *Biotropica* **46**, 378–386 (2014).
11. Lin, K. C., Hamburg, S. P., Tang, S. L., Hsia, Y. J. & Lin, T. C. Typhoon effects on litterfall in a subtropical forest. *Can. J. For. Res.* **33**, 2184–2192 (2003).
12. Lugo, A. E. Visible and invisible effects of hurricanes on forest ecosystems: an international overview. *Austral Ecol.* **33**, 368–398 (2008).
13. Whigham, D. F., Cano, E. C. & Harmon, M. E. The impact of hurricane Gilbert on trees, litterfall, and woody debris in a dry tropical forest in the northeastern Yucatan Peninsula. *Biotropica* **23**, 434–441 (1991).
14. Beard, K. H. *et al.* Structural and functional responses of a subtropical forest to 10 years of hurricanes and droughts. *Ecol. Monogr.* **75**, 345–361 (2005).
15. Shoo, L. P. & VanDerWal, J. No simple relationship between above-ground tree growth and fine-litter production in tropical forests. *J. Trop. Ecol.* **24**, 347–350 (2008).
16. Liu, C. *et al.* Variation in litterfall-climate relationships between coniferous and broadleaf forests in Eurasia. *Glob. Ecol. Biogeogr.* **13**, 105–114 (2004).
17. Kouki, J. & Hokkanen, T. Long-term needle litterfall of a Scots pine *Pinus sylvestris* stand: relation to temperature factors. *Oecologia* **89**, 176–181 (1992).
18. Walther, G. R. *et al.* Ecological responses to recent climate extremes. *Nature* **416**, 389–395 (2002).
19. Jentsch, A., Kreyling, J. & Beierkuhnlein, C. A new generation of climate-change experiments: event, not trends. *Fron. Ecol. Environ.* **5**, 365–374 (2007).
20. Emanuel, K. Increasing destructiveness of tropical cyclones over the past 30 years. *Nature* **436**, 686–688 (2005).
21. Elsner, J. B., Kossin, J. P. & Jagger, T. H. The increasing intensity of the strongest tropical cyclones. *Nature* **455**, 92–95 (2010).
22. Knutson, T. R. *et al.* Tropical cyclones and climate change. *Nat. Geosci.* **3**, 157–163 (2010).
23. Murakami, H., Wang, B., Li, T. & Kitoh, A. Projected increase in tropical cyclones near Hawaii. *Nat. Clim. Chang.* **3**, 749–754 (2013).
24. Boose, E. R., Foster, D. R. & Fluet, M. Hurricane impacts to tropical and temperate forest landscapes. *Ecol. Monogr.* **64**, 369–400 (1994).
25. Lin, T. C. *et al.* Typhoon disturbance and forest dynamics: lessons from a Northwest Pacific subtropical forest. *Ecosystems* **14**, 127–143 (2011).
26. Sato, T. *et al.* Temporal dynamics and resilience of fine litterfall in relation to typhoon disturbances over 14 years in an old-growth lucidophyllous forest in southwestern Japan. *Plant Ecol.* **208**, 187–198 (2010).
27. Chang, C. T. *et al.* Impacts of tropical cyclones on hydrochemistry of a subtropical forest. *Hydrol. Earth Syst. Sci.* **17**, 3815–3826 (2013).
28. Fisher, J. I., Hurtt, G. C., Thomas, R. Q. & Chambers, J. Q. Clustered disturbances lead to bias in large-scale estimates based on forest sample plots. *Ecol. Lett.* **11**, 554–563 (2008).
29. Tu, J. Y., Chou, C. & Chu, P. S. The abrupt shift of typhoon activity in the vicinity of Taiwan and its association with western North Pacific-East Asian climate change. *J. Clim.* **22**, 3617–3628 (2009).
30. Kossin, J. P., Emanuel, K. A. & Vecchi, G. A. The poleward migration of the location of tropical cyclone maximum intensity. *Nature* **509**, 349–352 (2014).
31. Liang, A., Oey, L., Huang, S. & Chou, S. Long-term trends of typhoon-induced rainfall over Taiwan: *in situ* evidence of poleward shift of typhoons in western North Pacific in recent decades. *J. Geophys. Res. – Atmos.* **122**, 2750–2765 (2017).
32. Lee, C. S., Huang, L. R., Shen, S. & Wang, S. T. A climatology model for forecasting typhoon rainfall in Taiwan. *Nat. Hazards* **37**, 87–105 (2006).
33. Lin, K. C., Horng, F. W., Yu, H. M. & Ma, F. C. Biomass and leaf area index estimates of broadleaf forests in Fushan forest. *Taiwan J. For. Sci.* **9**, 299–315 (1994).
34. McDowell, W. H. Hurricanes, people, and riparian zones: controls on nutrient losses from forested Caribbean watersheds. *For. Ecol. Manage.* **154**, 443–451 (2001).
35. Lin, S. Y. Differences in structure and wind damages among three forests differing in age and susceptibility to typhoons in northeastern Taiwan. (Master Thesis, in National Taiwan Normal University, 2016).
36. Hsia, Y. J. & Hwang, J. L. Hydrological characteristics of Fushan Experimental Forest. *Q. J. Chin. For.* **32**, 39–51 (1999).
37. Foster, D. R. Species and stand response to catastrophic wind in central New England, USA. *J. Ecol.* **76**, 135–151 (1988).
38. Walk, L. R. Tree damage and recovery from Hurricane Hugo in Luquillo Experimental Forest, Puerto Rico. *Biotropica* **23**, 379–385 (1991).
39. Kupfer, J. A., Myers, A. T., McLane, S. E. & Melton, G. N. Patterns of forest damage in a southern Mississippi landscape caused by Hurricane Katrina. *Ecosystems* **11**, 45–60 (2008).
40. Cook, G. D. & Goyens, C. M. A. C. The impact of wind on trees in Australian tropical savannas: lessons from cyclone Monica. *Austral Ecol.* **33**, 462–470 (2008).
41. TFR. *A list of native plants of Fushan Experimental Forest* (Taiwan Forestry Research Institute, Taipei, Taiwan, 1989).
42. Wang, H. H., Pan, F. J., Liu, C. K., Yu, Y. H. & Hung, S. F. Vegetation classification and ordination of a permanent plot in the Fushan Experimental Forest, northern Taiwan. *Taiwan J. For. Sci.* **15**, 411–428 (2000).
43. Horng, F. W. & Chang, W. E. Soil nutrient pool and available nutrient dynamics in the Fushan mixed hardwood forest ecosystem. *Taiwan J. For. Sci.* **11**, 465–473 (1996).
44. Liang, J. C., Wang, M. K. & King, H. B. Sulfate sorption of Fushan Forest soils. *J. Chin. Agri. Chem. Soc.* **36**, 42–56 (1997).
45. Simpson, R. H. & Riehl, H. *The hurricane and its impact*. (Louisiana State University Press, Louisiana, 1981).
46. Chen, Z., Shahriar, M. S. & Kang, B. H. User-centric recommendation-based approximate information retrieval from marine sensor data, in *Knowledge Management and Acquisition for Intelligent Systems* (eds Richards, D. & Kang, B. H.), pp 58–72 (Springer, Heidelberg, 2012).
47. Malone, S. L. *et al.* Seasonal patterns in energy partitioning of two freshwater marsh ecosystems in the Florida everglades. *J. Geophys. Res. – Biogeosci.* **119**, 1487–1505 (2014).
48. Wu, P. C., Guo, H. R., Lung, S. C., Lin, C. Y. & Su, H. J. Weather as an effective predictor for occurrence of dengue fever in Taiwan. *Acta Trop.* **103**, 50–57 (2007).
49. Kass, R. E. & Raftery, A. E. Bayes factors. *J. Am. Stat. Assoc.* **90**, 773–795 (1995).
50. Lutz, P. M., Mendes, B. V. M., Codeço, C. T., Struchiner, C. J. & Galvani, A. P. Time series analysis of dengue incidence in Rio de Janeiro, Brazil. *Am. J. Trop. Med. Hyg.* **79**, 933–939 (2008).
51. Nash, J. E. & Sutcliffe, J. V. River flow forecasting through conceptual models Part I – a discussion of principles. *J. Hydrol.* **10**, 282–290 (1970).

52. Sehgal, V., Tiwari, M. K. & Chatterjee, C. Wavelet bootstrap multiple linear regression based hybrid modeling for daily river discharge forecasting. *Water Resour. Manage* **28**, 2793–2811 (2014).
53. Menon, Sud. ArcGIS 10.3: The next generation of GIS is here. Environmental Systems Research Institute, Inc., CA, USA. <http://www.esri.com/software/arcgis> (2014).
54. Joint Typhoon Warning Center (JTWC). [https://metoc.ndbc.noaa.gov/web/guest/jtwc#\\_48\\_INSTANCE\\_0SiamlX2KcM6\\_=https%3A%2F%2Fmetoc.ndbc.noaa.gov%2FProductFeeds-portlet%2Fimg%2Fjtwc%2Fhtml%2Fcoop.jsp%3F](https://metoc.ndbc.noaa.gov/web/guest/jtwc#_48_INSTANCE_0SiamlX2KcM6_=https%3A%2F%2Fmetoc.ndbc.noaa.gov%2FProductFeeds-portlet%2Fimg%2Fjtwc%2Fhtml%2Fcoop.jsp%3F). Information describing that data may be freely distributed or copied: <https://metoc.ndbc.noaa.gov/web/guest/jtwc/products-and-services-notice>.
55. Open Government Data Providing Organization in Taiwan. <http://data.gov.tw/node/35430>. Open Government Data License, Version 1.0: <http://data.gov.tw/license#eng>.

## Acknowledgements

The study was supported by grants from Ministry of Science and Technology of Taiwan (96-2313-B-133-001, 97-2313-B-133-001, 98-2313-B-133-001, 98-2313-B-003-001-MY3, 99-2313-B-003-001-MY3, 100-2313-B-003-001-MY3). We thank for the long-term logistic support and collaborative efforts from TFRI (Taiwan Forestry Research Institute). L.W. acknowledges summer salary support from Division of Earth Sciences of National Science Foundation (NSF EAR-1562055). Special thanks to M. Arthur, G. Lovett and N. Brokow for constructive feedback on an earlier version of the manuscript.

## Author Contributions

K.C.L. designed research; K.C.L., C.T.D., C.M.H., C.T.C. and T.C.L. performed research; C.T.C. and T.C.L. analyzed data; C.T.C., T.C.L., L.W. and S.H.P. wrote the paper; and L.W. and S.H.P. contributed to revisions.

## Additional Information

**Supplementary information** accompanies this paper at doi:[10.1038/s41598-017-05288-y](https://doi.org/10.1038/s41598-017-05288-y)

**Competing Interests:** The authors declare that they have no competing interests.

**Publisher's note:** Springer Nature remains neutral with regard to jurisdictional claims in published maps and institutional affiliations.



**Open Access** This article is licensed under a Creative Commons Attribution 4.0 International License, which permits use, sharing, adaptation, distribution and reproduction in any medium or format, as long as you give appropriate credit to the original author(s) and the source, provide a link to the Creative Commons license, and indicate if changes were made. The images or other third party material in this article are included in the article's Creative Commons license, unless indicated otherwise in a credit line to the material. If material is not included in the article's Creative Commons license and your intended use is not permitted by statutory regulation or exceeds the permitted use, you will need to obtain permission directly from the copyright holder. To view a copy of this license, visit <http://creativecommons.org/licenses/by/4.0/>.

© The Author(s) 2017