







# SpongeMaps

integrating morphological data with DNA barcodes  
through a bespoke online portal

**Kathryn Hall**<sup>1\*</sup>, Pavani Sri Adibhatla<sup>1</sup>, Merrick Ekins<sup>1</sup>, Leanne Nelson<sup>1</sup>, Garry Jolley-Rogers<sup>2</sup>, Dirk Erpenbeck<sup>3</sup>, Gert Wörheide<sup>3</sup> & John Hooper<sup>1</sup>

<sup>1</sup> Biodiversity Program, Queensland Museum, Brisbane, Australia

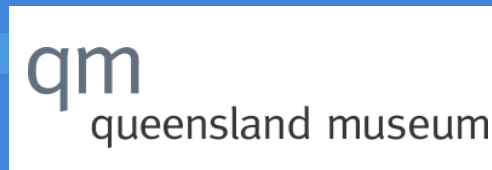
<sup>2</sup> Centre for Australian National Biodiversity Research, CSIRO Plant Industry, Canberra, Australia

<sup>3</sup> Department of Earth and Environmental Sciences & GeoBio-CenterLMU, Ludwig-Maximilians-University, Munich, Germany

# Overview

- Background
- Demonstration
- Into the future

# In the beginning...



GoC Specimens

ANACEA 2006  
CARPENTARIA  
DALEA  
2006  
GULF OF CARPENTARIA  
2006  
KALANOT  
2006  
CARPENTARIA  
2006  
GULF OF CARPENTARIA  
2006  
AMPHIPODA  
2006  
GULF OF CARPENTARIA  
2006  
AMPHIPODA  
2006  
GULF OF CARPENTARIA  
2006  
AMPHIPODA  
2006

Box QM 001 — QM 025

Box QM 026 — QM 105



Plate QM 201

stored in ETOH

Coriifera









Box QM 106 — QM 130

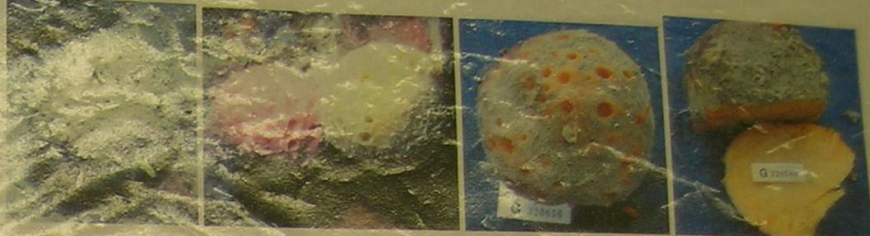


Box QM 001 — QM 025



706





SF.NO.: 6

DEMOSPONGIAE: TETRACTINOMORPHA: SPIROPHORIDA: TETILLIDAE

ID: *Cinachyrella australiensis* (Carter, 1886)

GROWTH FORM: More or less spherical, short basal attachment.

COLOUR: Typically yellowish-brown exterior, sometimes brighter or paler, beige-grey in ethanol.

OSCULES: Numerous, moderately small, in porocalyces, evenly distributed over the surface, sometimes inconspicuous.

TEXTURE: Firm, harsh, incompressible.

SURFACE ORNAMENTATION: Opaque, hispid; Even, prominently hispid, with scattered porocalyces covered in fine silt layer.

ECTOSOMAL SKELETON: Membranous, with distinct multispicular bundles of megascleres radially penetrating the surface.

CHOANOSOMAL SKELETON: Radially arranged bundles diverging at the periphery, with moderately high collagen containing abundant sigmaspires (sometimes lost).

MEGASCLERES: Oxeas (~7000-9000  $\mu\text{m}$ ), Anatriaenes (>1000  $\mu\text{m}$ ), Protriaenes (>1000  $\mu\text{m}$ )

MICROSCLERES: Sigmaspires (14-20  $\mu\text{m}$ ), Raphides (150  $\mu\text{m}$ )







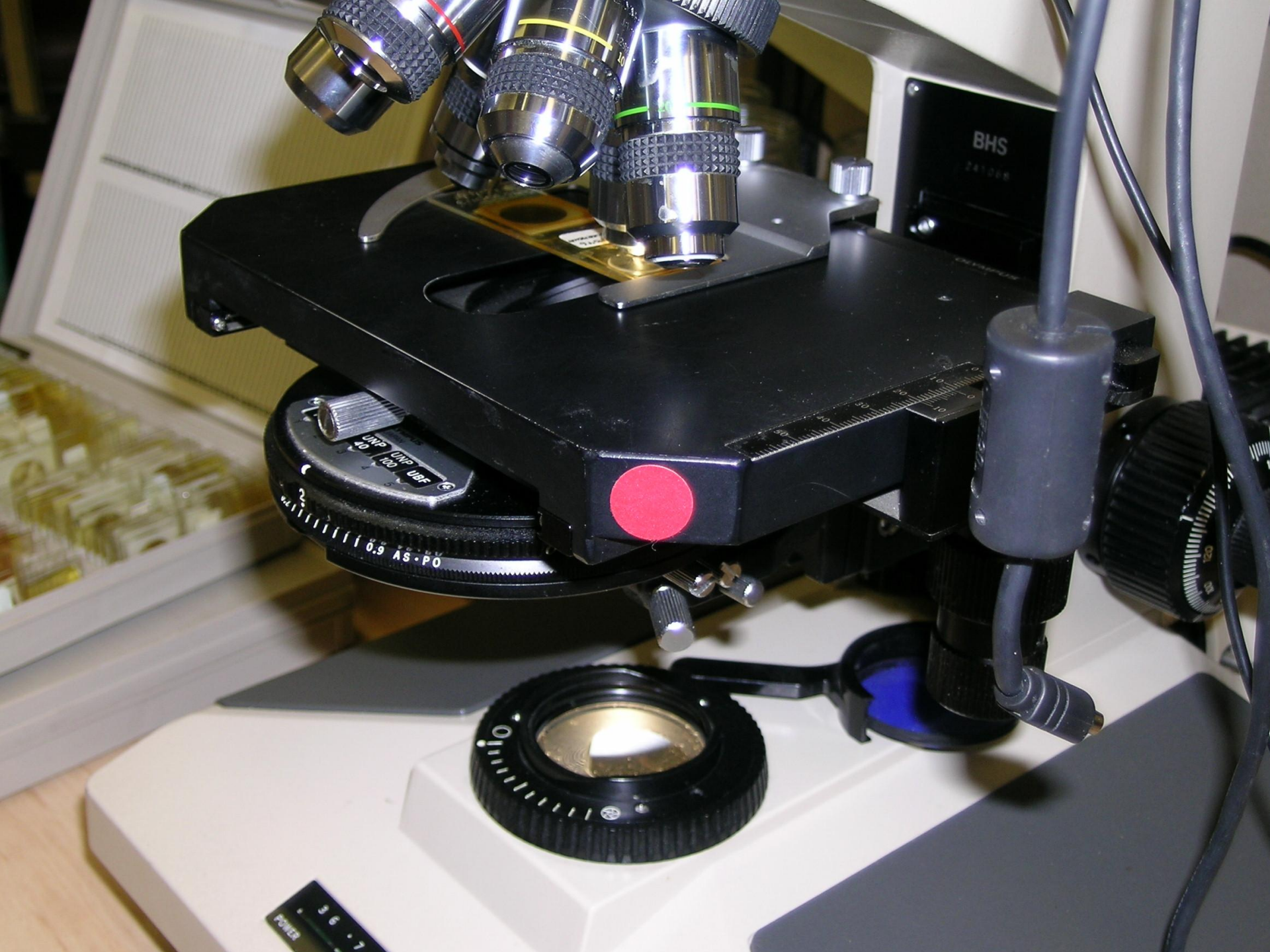
MADE IN U.S.

1 2 3 4 5 6 7 8 9 10 11 12 13 14 15 16 17 18 19 20 21 22 23 24 25 26 27 28 29 30

550  
500

MNS  
MNS





BHS

241248

UHF UHF UHF UHF

20 100 100 100

0.9 AS-PO

POWER 3 6 7







149



2



4



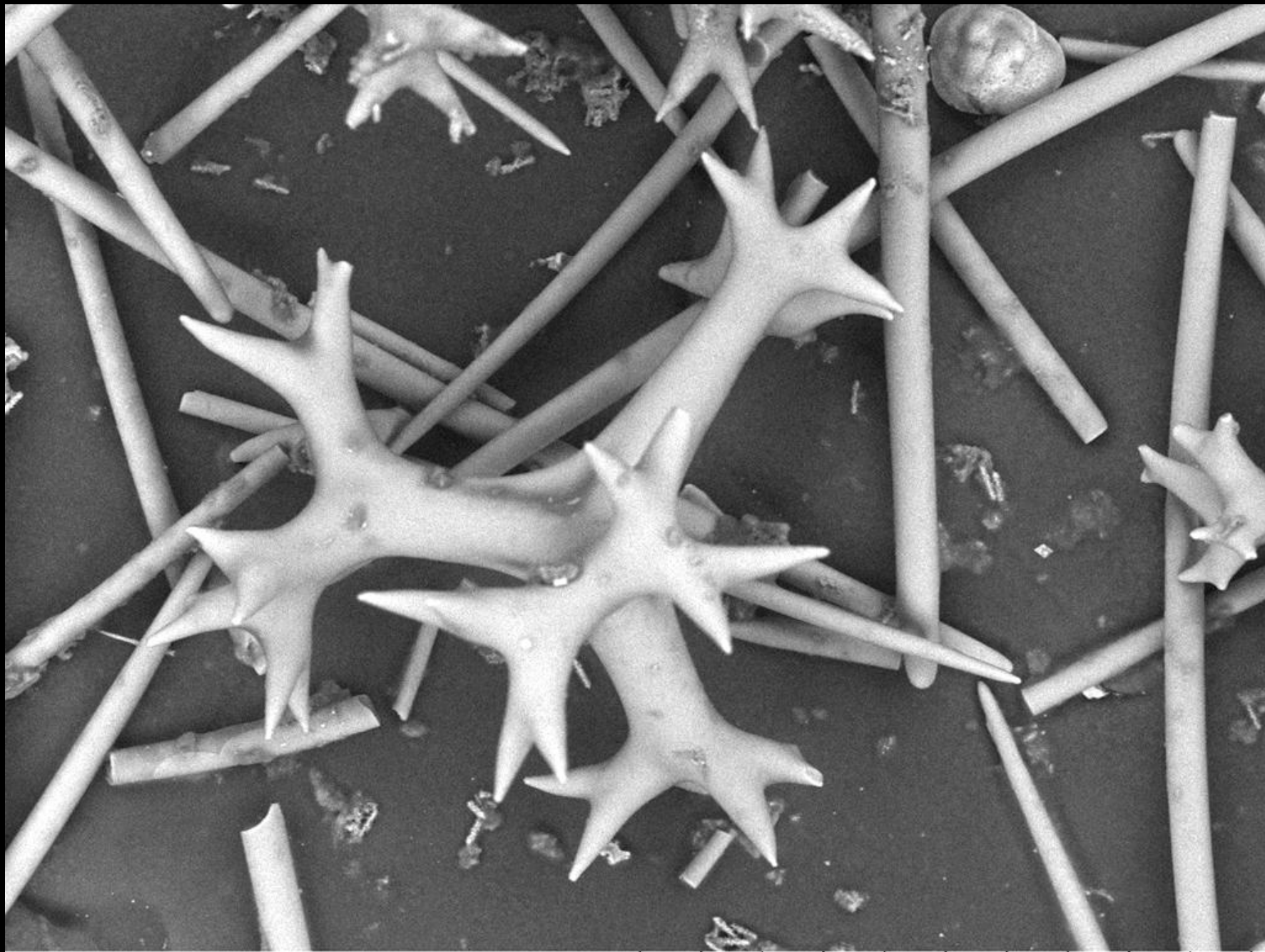
5



6



8



TM-1000\_0130

2010/03/05 15:35 L D4.2 x400 200 um

**5,000  
OTUs**

**17,000  
DNA  
samples**

**30,000  
museum  
specimens**

**65,000  
images**

**5,000  
OTUs**



**17,000  
DNA  
samples**

**30,000  
museum  
specimens**



**65,000  
images**

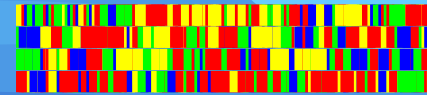
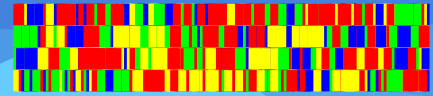
**5,000  
OTUs**

**17,000  
DNA  
samples**

**30,000  
museum  
specimens**

**65,000  
images**

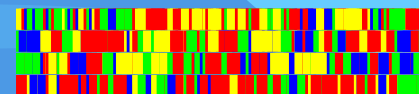
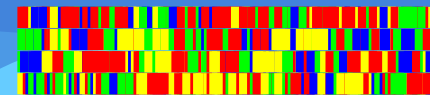
**chemical compounds**



**5,000  
OTUs**



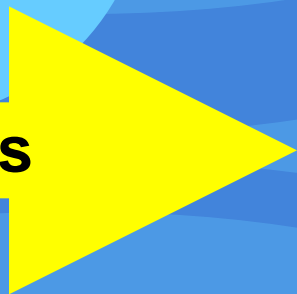
**17,000  
DNA  
samples**



**30,000  
museum  
specimens**

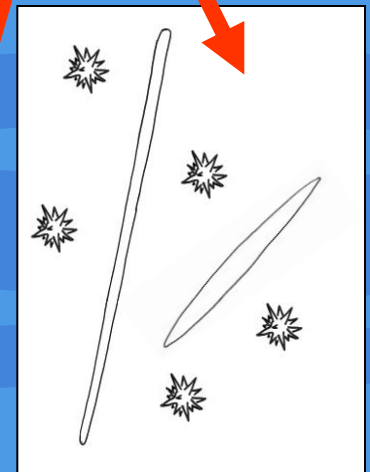
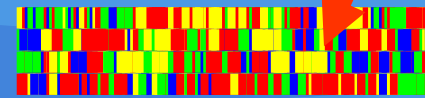
**65,000  
images**

**chemical compounds**



# SpongeMaps: a collaboration tool

- wiki-based
- allow multiple users (with permissions) to view, edit, add, annotate data associated with:
  - individual specimens
  - operational taxonomic units (OTUs)
- enable data exposure
- facilitate collaboration
- enhances taxonomic consistency
- increases data source sharing (DNA, morphology, chemistry, biogeography, *etc.*)







# SpongeMaps: a collaboration tool

- Taxa Webs
- Marine Web
- Sponge Web

## Overview

This is a workbench designed around the work practices of scientists studying Porifera Taxonomy and Systematics. It is based on current work practices and is intended as a tool suited for the entire community of scientists who work in this phylum.

Details of Operational Taxonomic Units (OTU's) and specimens are recorded in a consistent way with in a manner based on current practice. The structure of content is similarly flexible. It can be annotated.

Where ever possible, external data sources are used to place content in context: such as OZCAM, the Atlas of Living Australia ( 1, 2, 3), WORMS and Sponge Barcoding Project.

These descriptions are flexible and can be accessed and changed by collaborators via a browser. Changes are recorded. Content can be easily restored to previous versions.

OTU's contain "Mudmaps" of morphological traits and links to associated specimens. Systematic and collaborative description of the Operational Taxonomic Units (OTUs). Specimens are treated separately and linked to OTU's. Phylogenetic trees can also be linked to specimens and OTU's.

Below you will find links to tabular views of

- > OTU - Operational Taxonomic Units
- > Specimens
- > Porifera Phylogeny

## Operational Taxonomic Units

- > OTU - Operational Taxonomic Units
- > Status - whether proposed, provisional or publish
- > Characters - mud maps / Character lists
- > Classification - Higher classification/s

## Specimens

- > Specimens
- > Specimen Images

## Phylogeny

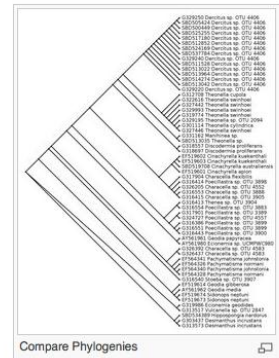
- > Porifera Phylogeny - linked to Specimens / OTU's

## Barcoding

via links to [Sponge Barcoding Project](#)

- > listed in [Specimens](#)
- > listed in [OTU?](#) Operational Taxonomic Units

- > Proposed
  - > OTU1232
  - > OTU2564
  - > OTU2655
  - > ...
- > Provisional
  - > OTU0266
  - > OTU0309
  - > OTU0333
  - > OTU0381
  - > OTU0400
  - > ...





## SpongeMaps: a collaboration tool

- Taxa Webs
- Marine Web
- Sponge Web

### Overview

This is a workbench designed around the work practices of scientists studying Porifera Taxonomy and Systematics. It is based on current work practices and is intended as a tool suited for the entire community of scientists who work in this phylum.

Details of Operational Taxonomic Units (OTU's) and specimens are recorded in a consistent way with in a manner based on current practice. The structure of content is similarly flexible. It can be annotated.

Where ever possible, external data sources are used to place content in context: such as OZCAM, the Atlas of Living Australia ( 1, 2, 3), WORMS and Sponge Barcoding Project

These descriptions are flexible and can be accessed and changed by collaborators via a browser. Changes are recorded. Content can be easily restored to previous versions.

OTU's contain "Mudmaps" of morphological traits and links to associated specimens. Systematic and collaborative description of the Operational Taxonomic Units (OTUs), S specimens and OTU's.

Below you will find links to tabular views of

- OTU - Operational Taxonomic Units
- Specimens
- Porifera Phylogeny

### Operational Taxonomic Units

- OTU - Operational Taxonomic Units
- Status - whether proposed, provisional or publish
- Characters - mud maps / Character lists
- Classification - Higher classification/s

### Specimens

- Specimens
- Specimen Images

- Proposed
- OTU1232
- OTU2564
- OTU2655



## SpongeMaps: a collaboration tool

Taxa Webs Marine Web Sponge Web Taxa Web OTUs

## Operational Taxonomic Units - current

OTU	Genus	Species	Megascleres	Microscleres	AphiaID	AboutURI	References	Remarks	Modified	
1	OTU0006	Cinachyrella	australiensis	oxeas: ~7000-9000 $\mu\text{m}$ ; anatriaenes: >1000 $\mu\text{m}$ ; protriaenes: >1000 $\mu\text{m}$ .	sigmaspires: 14-20 $\mu\text{m}$ ; raphides: ~150 $\mu\text{m}$ .	171296	<a href="http://www.marinespecies.org/aphia.php?p=taxdetails&amp;id=171296">http://www.marinespecies.org/aphia.php?p=taxdetails&amp;id=171296</a>	N/A	none.	25 Nov 2011 - 04:32
2	OTU0266	Craniella	coxi	oxeas: choanosomal, ~890 $\mu\text{m}$ ; anisoxeas: ectosomal, ~300-500 $\mu\text{m}$ ; protriaenes: ~1200 $\mu\text{m}$ .	sigmaspires: ~10 $\mu\text{m}$ ; spirasters.	367755		N/A	synonyms: <i>Chalinula coxi</i> Lendenfeld, 1885; <i>Tethya</i> <i>dactyloidea</i> Carter, 1869; <i>Tetilla</i> <i>dactyloidea</i> var. <i>lingua</i> Annandale, 1915.	24 Nov 2011 - 22:23
3	OTU0309	Cinachyrella	sp. (OTU 0309)	oxeas: ~ 3500 $\mu\text{m}$ ; anisoxeas: (?), ~3000 $\mu\text{m}$ ; anatriaenes: ~ 2300 $\mu\text{m}$ ; protriaenes: ~2000 $\mu\text{m}$ .	nil.	171287	<a href="http://www.marinespecies.org/aphia.php?p=taxdetails&amp;id=171287">http://www.marinespecies.org/aphia.php?p=taxdetails&amp;id=171287</a>	N/A	none.	24 Nov 2011 - 22:26
4	OTU0333	Cinachyrella	sp. (OTU 0333)	oxeas: strongyloxeas, ~5000-6000 $\mu\text{m}$ ; protriaenes: ~1000 $\mu\text{m}$ .	microxeas: ~200 $\mu\text{m}$ ; sigmaspires: ~10 $\mu\text{m}$ .	171287	<a href="http://www.marinespecies.org/aphia.php?p=taxdetails&amp;id=171287">http://www.marinespecies.org/aphia.php?p=taxdetails&amp;id=171287</a>	N/A	none.	24 Nov 2011 - 22:29
5	OTU0381	Cinachyrella	sp. (OTU 0381)	styles: ~2000 x 25 $\mu\text{m}$ ; protriaenes: 2 classes, 1, ~2500-2800 x 12-15 $\mu\text{m}$ , 2, subtype, rare ~300 x 10 $\mu\text{m}$ .	sigmaspires: ~15-18 $\mu\text{m}$ .	171287	<a href="http://www.marinespecies.org/aphia.php?p=taxdetails&amp;id=171287">http://www.marinespecies.org/aphia.php?p=taxdetails&amp;id=171287</a>	N/A	none.	24 Nov 2011 - 22:28
6	OTU0400	Cinachyrella	sp. (OTU 0400)	oxeas: 2 classes, 1, very long, thin, ~400-800 x 10-20 $\mu\text{m}$ , 2, very large, none intact; anatriaenes: ~900 x 8 $\mu\text{m}$ ; prodiaenes: ~900 x 15 $\mu\text{m}$ ; promonaenes: ~800 x 15 $\mu\text{m}$ .	microxeas: ~90 x 2 $\mu\text{m}$ ; sigmaspires: ~10 x 1.5 $\mu\text{m}$ ; spirasters: ~30 x 1.5 $\mu\text{m}$ .	171287	<a href="http://www.marinespecies.org/aphia.php?p=taxdetails&amp;id=171287">http://www.marinespecies.org/aphia.php?p=taxdetails&amp;id=171287</a>	N/A	promonaenes unable to be located on second observation; likely to be broken prodiaene.	24 Nov 2011 - 22:28
7	OTU0402	Craniella	sp. (OTU 0402)	oxeas: numerous size classes, 28073500 ?m; anatriaenes: hair-like; protriaenes: 280075000 ? 10?20 ?m.	nil.	132093	<a href="http://www.marinespecies.org/aphia.php?p=taxdetails&amp;id=132093">http://www.marinespecies.org/aphia.php?p=taxdetails&amp;id=132093</a>	N/A	none.	24 Nov 2011 - 22:30
8	OTU0404	Cinachyrella	sp. (OTU 0404)	oxeas: 2 size classes, 1, ~1500-4500 x 60-70 $\mu\text{m}$ , 2, ~200 x 15 $\mu\text{m}$ ; anatriaenes: ~3000 x 25 $\mu\text{m}$ ; protriaenes: ~900-3500 x 5-30 $\mu\text{m}$ ; promonaenes: ~1000 x 4 $\mu\text{m}$ .	nil.	171287	<a href="http://www.marinespecies.org/aphia.php?p=taxdetails&amp;id=171287">http://www.marinespecies.org/aphia.php?p=taxdetails&amp;id=171287</a>	N/A	promonaenes unable to be located on second observation; likely to be broken prodiaene.	24 Nov 2011 - 22:30



## SpongeMaps: a collaboration tool

Taxa Webs Marine Web Sponge Web Taxa Web OTUs

## Operational Taxonomic Units - current

OTU	Genus	Species	Megascleres	Microscleres	AphiaID	AboutURI	References	Remarks	Modified
1	Cinachyrella	australiensis	oxeas: ~7000-9000 $\mu\text{m}$ ; anatriaenes: >	sigmaspires: 14-20 $\mu\text{m}$ ; raphides: ~15f	171296	<a href="http://www.marinespecies.org/">http://www.marinespecies.org/</a>	N/A	none.	25 Nov 2011 - 04:32
2	Craniella	coxi	oxeas: choanosomal, ~890 $\text{\AA}\mu\text{m}$ ; anisoxeas: ectosomal, ~300 $\square\square\square$ 500 $\text{\AA}\mu\text{m}$ ; protriaenes: ~1200 $\text{\AA}\mu\text{m}$ .	sigmaspires: ~10 $\text{\AA}\mu\text{m}$ ; spirasters.	367755		N/A	synonyms: <i>Chalinula coxi</i> Lendeteid, 1885; <i>Tethya dactyloidea</i> Carter, 1869; <i>Tetilla dactyloidea</i> var. <i>lingua</i> Annandale, 1915.	24 Nov 2011 - 22:23
3	Cinachyrella	sp. (OTU 0309)	oxeas: ~3500 $\mu\text{m}$ ; anisoxeas (?), ~3000 $\mu\text{m}$ ; anatriaenes: ~2300 $\mu\text{m}$ ; protriaenes: ~2000 $\mu\text{m}$ .	nil.	171287	<a href="http://www.marinespecies.org/aphia.php?p=taxdetails&amp;id=171287">http://www.marinespecies.org/aphia.php?p=taxdetails&amp;id=171287</a>	N/A	none.	24 Nov 2011 - 22:26
4	Cinachyrella	sp. (OTU 0333)	oxeas: stronglyloxeas, ~5000-6000 $\mu\text{m}$ ; protriaenes: ~1000 $\mu\text{m}$ .	microxeas: ~200 $\mu\text{m}$ ; sigmaspires: ~10 $\mu\text{m}$ .	171287	<a href="http://www.marinespecies.org/aphia.php?p=taxdetails&amp;id=171287">http://www.marinespecies.org/aphia.php?p=taxdetails&amp;id=171287</a>	N/A	none.	24 Nov 2011 - 22:29
5	Cinachyrella	sp. (OTU 0381)	styles: ~2000 x 25 $\mu\text{m}$ ; protriaenes: 2 classes, 1, ~2500-2800 x 12-15 $\mu\text{m}$ , 2, subtylote, rare ~300 x 10 $\mu\text{m}$ .	sigmaspires: ~15-18 $\mu\text{m}$ .	171287	<a href="http://www.marinespecies.org/aphia.php?p=taxdetails&amp;id=171287">http://www.marinespecies.org/aphia.php?p=taxdetails&amp;id=171287</a>	N/A	none.	24 Nov 2011 - 22:28
6	Cinachyrella	sp. (OTU 0400)	oxeas: 2 classes, 1, very long, thin, ~400-800 x 10-20 $\mu\text{m}$ , 2, very large, none intact; anatriaenes: ~500 x 8 $\mu\text{m}$ ; prodiaenes: ~900 x 15 $\mu\text{m}$ ; promonaenes: ~900 x 15 $\mu\text{m}$ .	microxeas: ~90 x 2 $\mu\text{m}$ ; sigmaspires: ~10 x 1.5 $\mu\text{m}$ ; spirasters: ~30 x 1.5 $\mu\text{m}$ .	171287	<a href="http://www.marinespecies.org/aphia.php?p=taxdetails&amp;id=171287">http://www.marinespecies.org/aphia.php?p=taxdetails&amp;id=171287</a>	N/A	promonaenes unable to be located on second observation; likely to be broken prodiaene.	24 Nov 2011 - 22:28
7	Craniella	sp. (OTU 0402)	oxeas: numerous size classes, 280?3500 ?m; anatriaenes: hair-like; protriaenes: 2800?5000 ? 10?20 ?m.	nil.	132093	<a href="http://www.marinespecies.org/aphia.php?p=taxdetails&amp;id=132093">http://www.marinespecies.org/aphia.php?p=taxdetails&amp;id=132093</a>	N/A	none.	24 Nov 2011 - 22:30
8	Cinachyrella	sp. (OTU 0404)	oxeas: 2 size classes, 1, ~1500-4500 x 60-70 $\mu\text{m}$ , 2, ~200 x 15 $\mu\text{m}$ ; anatriaenes: ~3000 x 25 $\mu\text{m}$ ; protriaenes: ~900-3500 x 5-30 $\mu\text{m}$ ; promonaenes: ~1000 x 4 $\mu\text{m}$ .	nil.	171287	<a href="http://www.marinespecies.org/aphia.php?p=taxdetails&amp;id=171287">http://www.marinespecies.org/aphia.php?p=taxdetails&amp;id=171287</a>	N/A	promonaenes unable to be located on second observation; likely to be broken prodiaene.	24 Nov 2011 - 22:30



## SpongeMaps: a collaboration tool

Taxa Webs Marine Web Sponge Web Taxa Web OTUs

## Operational Taxonomic Units - current

OTU	Genus	Species	Megascleres	Microscleres	AphiaID	AboutURI	References	Remarks	Modified	
1	OTU0006	Cinachyrella	australiensis	oxeas: ~7000-9000 $\mu\text{m}$ ; anatriaenes: >1000 $\mu\text{m}$ ; protriaenes: >1000 $\mu\text{m}$ .	sigmaspires: 14-20 $\mu\text{m}$ ; raphides: ~150 $\mu\text{m}$ .	171296	<a href="http://www.marinespecies.org/aphia.php?p=taxdetails&amp;id=171296">http://www.marinespecies.org/aphia.php?p=taxdetails&amp;id=171296</a>	N/A	none.	25 Nov 2011 - 04:32
2	OTU0415	Cinachyrella	sp. (OTU 0415)	oxeas: 2 size classes, 1, ~2350 x 40 $\mu\text{m}$ , 2, ~750 x 7 $\mu\text{m}$ .	microxeas: ~200 x 3 $\mu\text{m}$ ; sigmaspires: ~10-20 x 1-20 $\mu\text{m}$ ; raphides: ~160 x 0.5 $\mu\text{m}$ .	171287	<a href="http://www.marinespecies.org/aphia.php?p=taxdetails&amp;id=171287">http://www.marinespecies.org/aphia.php?p=taxdetails&amp;id=171287</a>	Burton (1934: p. 526).	Specimen QM G303045 contains triaenes. Similar to Cinachyrella enigmatica (Burton, 1934), but not pink in colour.	25 Nov 2011 - 00:57
3	OTU2231	Fangophiina	sp. (OTU 2231)	oxeas: 2 size classes, 1, ~3400 $\mu\text{m}$ , 2, ~1165 $\mu\text{m}$ ; protriaenes: rare, only one found, ~1150 $\mu\text{m}$ .	sigmas: ~10 $\mu\text{m}$ ; raphides: ~230 $\mu\text{m}$ .	171359	<a href="http://www.marinespecies.org/aphia.php?p=taxdetails&amp;id=171359">http://www.marinespecies.org/aphia.php?p=taxdetails&amp;id=171359</a>	N/A	none.	24 Nov 2011 - 22:41
4	OTU2655	Cinachyrella	enigmatica	oxeas: ~1000-2100 $\mu\text{m}$ .	microxeas: ~25 $\mu\text{m}$ ; sigmaspires: 2 size classes, 1, ~25 $\mu\text{m}$ , 2, ~10 $\mu\text{m}$ ; raphides: also in trichodragmata, ~100-145 $\mu\text{m}$ .	171301		Burton (1934: p. 526).	none.	25 Nov 2011 - 00:32

Page 1 of 1 20

View 1 - 4 of 20

Edit • Attach • Subscribe • Print version • History: r13 < r12 < r11 < r10 • Backlinks • View wiki text • Edit wiki text • More topic actions

r13 - 2011-11-21 - 10:04:00 - Main.GarryJolleyRogers

All material on this site is the property of the contributing authors.  
Ideas, requests, problems regarding TRIN Wiki? [Send feedback](#)

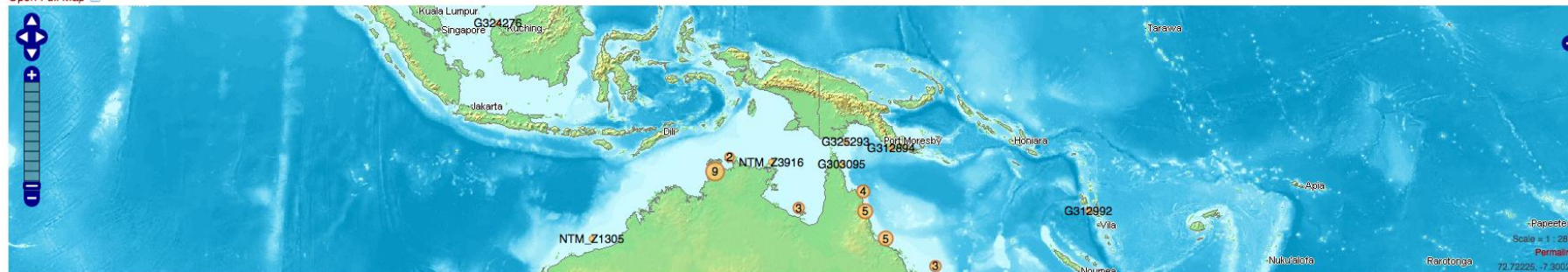
FOSWIKI

## SpongeMaps: a collaboration tool

Taxa Webs Marine Web Sponge Web Taxa Web OTU0006

OTU0006 *Cinachyrella australiensis* (Carter, 1886) checked

Open Full Map



+ View specimen list



Browse Images

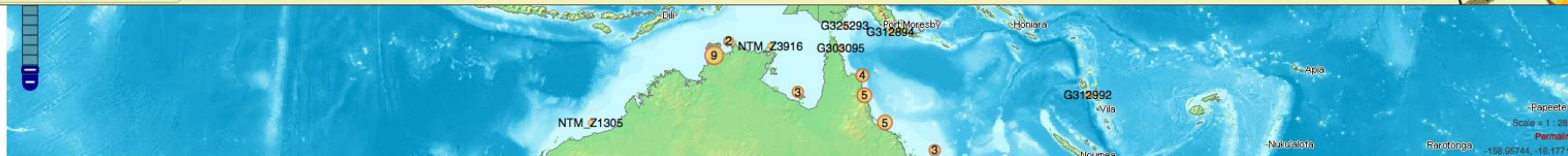
Classification Porifera: Demospongiae: Spirophorida: Tetillidae:

Scientific Name *Cinachyrella australiensis* (Carter, 1886)**Growth Form** more or less spherical, short basal attachment.**Colour** yellowish-brown exterior, sometimes brighter or paler, on deck; beige to grey in ethanol.**Oscules** numerous, moderately small, in porocalyces, evenly distributed over surface, sometimes inconspicuous.**Texture** firm, harsh, incompressible.**Surface Ornamentation** opaque, hispid; even, prominently hispid, with scattered porocalyces, covered in fine silt layer.**Ectosomal Skeleton** membranous, with distinct multispicular bundles of megascleres radially penetrating surface.**Choanosomal Skeleton** radially arranged bundles diverging at periphery, with moderately heavy collagen containing abundant sigmaspires (sometimes lost).**Megascleres** oxeas: ~7000-9000 µm; anatriaenes: >1000 µm; protriaenes: >1000 µm.

## Synonymised species

*Cinachyra isis* Lendenfeld, 1907 (genus transfer and junior synonym)  
*Cinachyra malaccensis* Sollas, 1902 (genus transfer and junior synonym)  
*Cinachyra providentiae* Dendy, 1922 (genus transfer and junior synonym)  
*Craniella australiensis* (Carter, 1886) (genus transfer)  
*Spirella porosa* Lendenfeld, 1888 (genus transfer & junior synonym)  
*Tethya armata* Baer, 1906 (genus transfer and junior synonym)  
*Tethya australiensis* Carter, 1886 (genus transfer)  
*Tetilla cinachyroides* Hentschel, 1911  
*Tetilla lindgreni* Lendenfeld, 1903 (genus transfer & junior synonym)

View



## + View specimen list



## Browse Images

**Classification** Porifera: Demospongiae: Spirophorida: Tetillidae:

**Scientific Name** *Cinachyrella australiensis* (Carter, 1886)

**Growth Form** more or less spherical, short basal attachment.

**Colour** yellowish-brown exterior, sometimes brighter or paler, on deck; beige to grey in ethanol.

**Oscules** numerous, moderately small, in porocalyces, evenly distributed over surface, sometimes inconspicuous.

**Texture** firm, harsh, incompressible.

**Surface Ornamentation** opaque, hispid; even, prominently hispid, with scattered porocalyces, covered in fine silt layer.

**Ectosomal Skeleton** membranous, with distinct multispicular bundles of megascleres radially penetrating surface.

**Choanosomal Skeleton** radially arranged bundles diverging at periphery, with moderately heavy collagen containing abundant sigmaspires (sometimes lost).

**Megascleres** oxeas: ~7000–9000  $\mu$ m; anatriaenes: >1000  $\mu$ m; protriaenes: >1000  $\mu$ m.

**Microscleres** sigmaspires: 14–20  $\mu$ m; raphides: ~150  $\mu$ m.

**Remarks or Comments** none.

**References** N/A

**Edit History** Author: QM Checked by: K Hall Date: 1 Nov 2009

## Synonymised species

*Cinachyra isis* Lendenfeld, 1907 (genus transfer and junior synonym)  
*Cinachyra malaccensis* Sollas, 1902 (genus transfer and junior synonym)  
*Cinachyra providentiae* Dendy, 1922 (genus transfer and junior synonym)  
*Craniella australiensis* (Carter, 1886) (genus transfer)  
*Spiretella porosa* Lendenfeld, 1888 (genus transfer & junior synonym)  
*Tethya armata* Baer, 1906 (genus transfer and junior synonym)  
*Tethya australiensis* Carter, 1886 (genus transfer)  
*Tetilla cinachyroides* Hentschel, 1911  
*Tetilla lindgreni* Lendenfeld, 1903 (genus transfer & junior synonym)

## View

[World porifera database record](#)

[WoRMS record](#)

[WoRMS species record](#)

## OZCAM

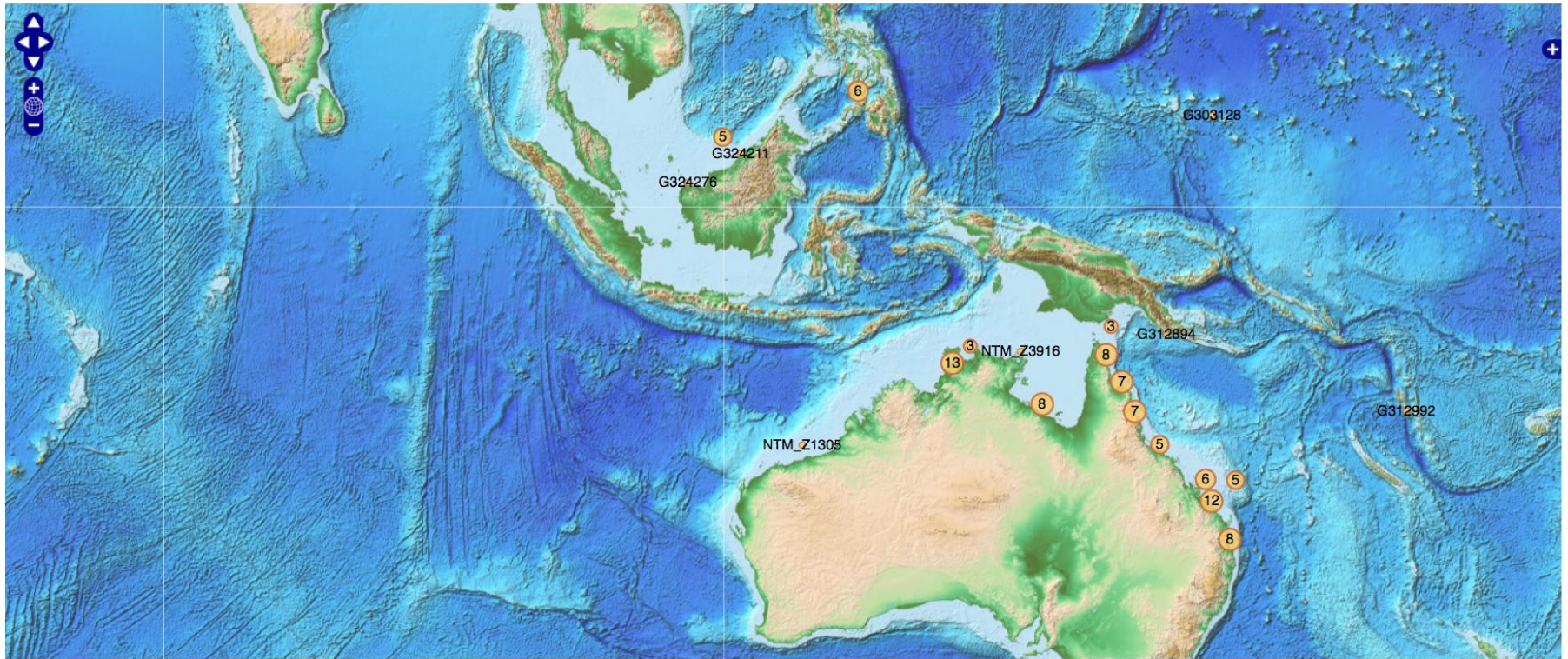
No records found for "*Cinachyrella australiensis*"



## SpongeMaps: a collaboration tool



- Taxa Webs
- Marine Web
- Sponge Web
- Taxa Web**
- Admin
- GeneralMap

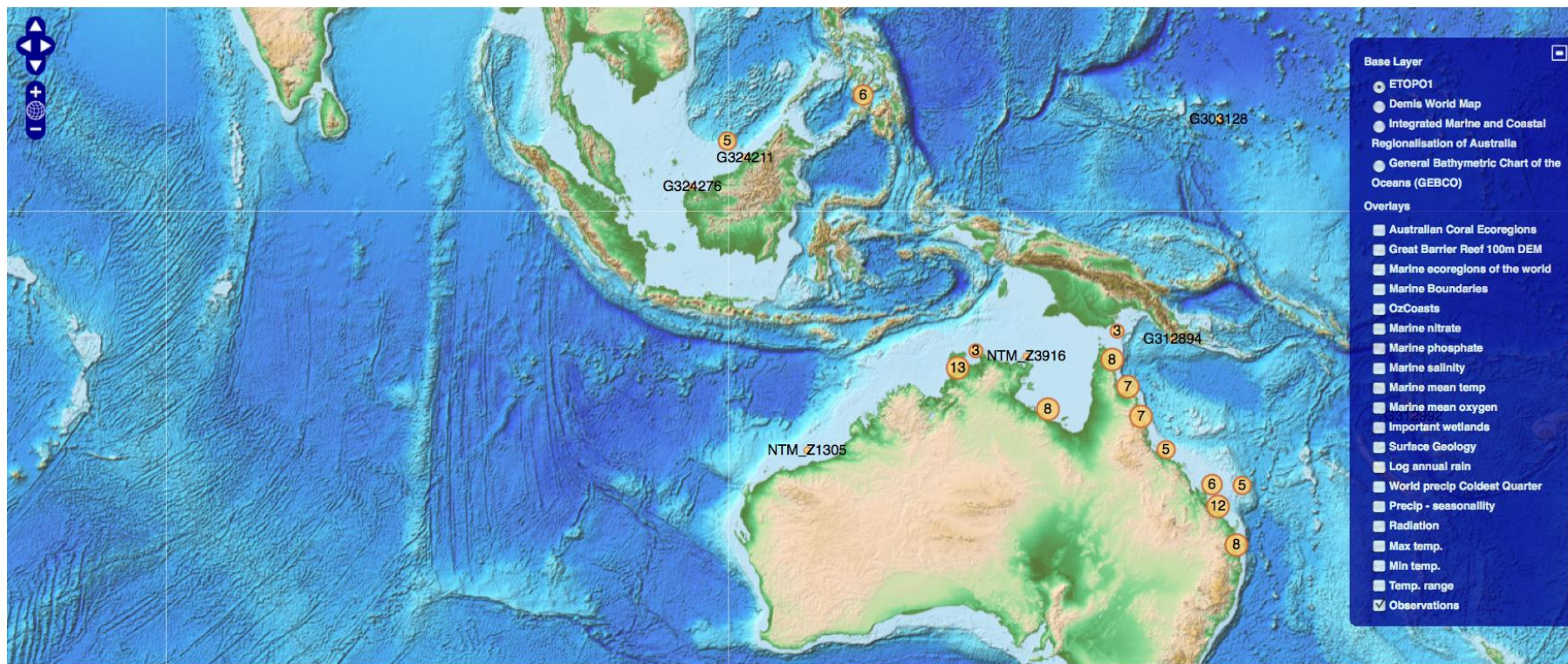






# SpongeMaps: a collaboration tool

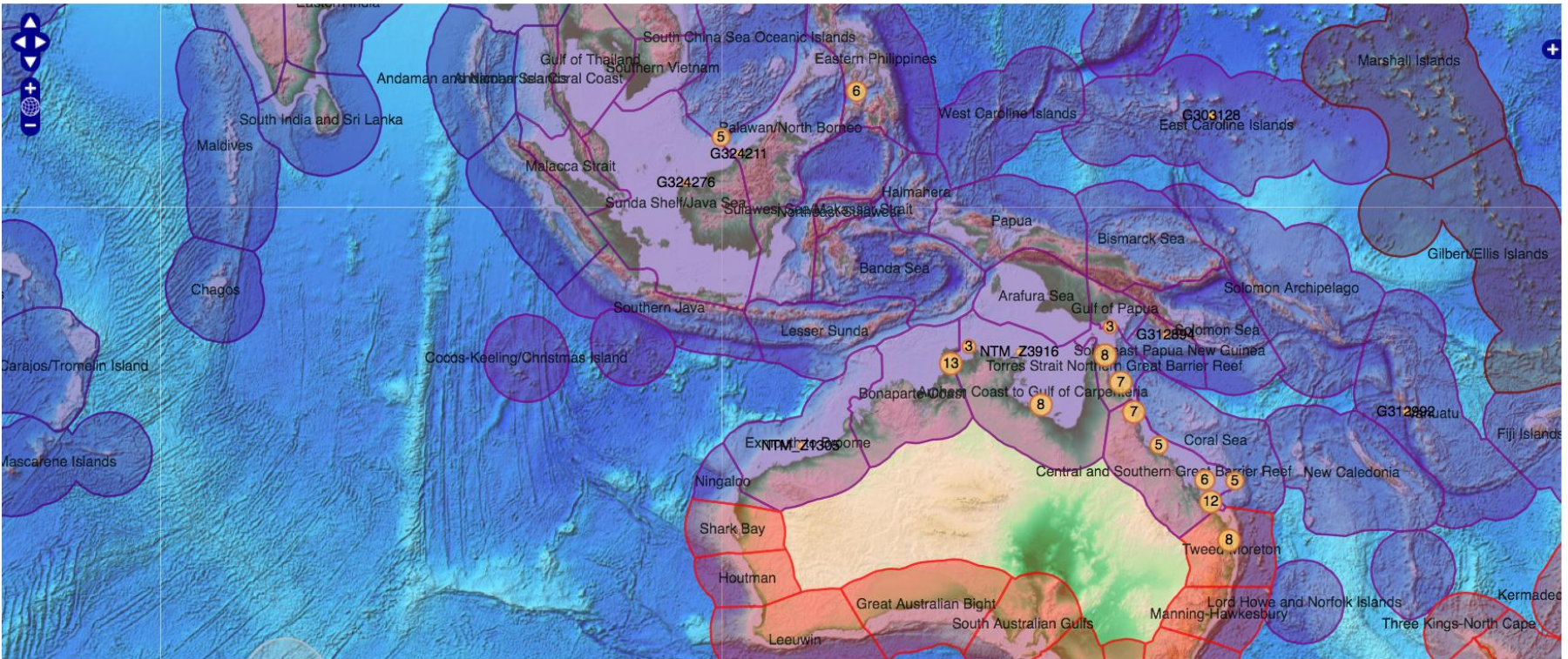
- Taxa Webs
- Marine Web
- Sponge Web
- Taxa Web
- Admin
- GeneralMap

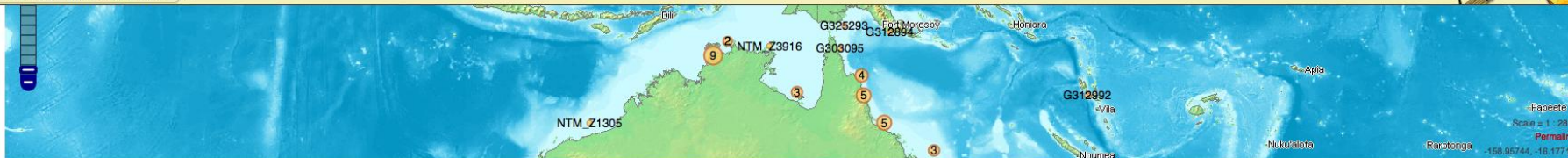




# SpongeMaps: a collaboration tool

- Taxa Webs
- Marine Web
- Sponge Web
- Taxa Web**
- Admin
- GeneralMap





## + View specimen list



## Browse Images

**Classification** Porifera: Demospongiae: Spirophorida: Tetillidae:

**Scientific Name** *Cinachyrella australiensis* (Carter, 1886)

**Growth Form** more or less spherical, short basal attachment.

**Colour** yellowish-brown exterior, sometimes brighter or paler, on deck; beige to grey in ethanol.

**Oscules** numerous, moderately small, in porocalyces, evenly distributed over surface, sometimes inconspicuous.

**Texture** firm, harsh, incompressible.

**Surface Ornamentation** opaque, hispid; even, prominently hispid, with scattered porocalyces, covered in fine silt layer.

**Ectosomal Skeleton** membranous, with distinct multispicular bundles of megascleres radially penetrating surface.

**Choanosomal Skeleton** radially arranged bundles diverging at periphery, with moderately heavy collagen containing abundant sigmaspires (sometimes lost).

**Megascleres** oxeas: ~7000–9000  $\mu$ m; anatriaenes: >1000  $\mu$ m; protriaenes: >1000  $\mu$ m.

**Microscleres** sigmaspires: 14–20  $\mu$ m; raphides: ~150  $\mu$ m.

**Remarks or Comments** none.

**References** N/A

**Edit History** Author: QM Checked by: K Hall Date: 1 Nov 2009

Edit • Attach • Subscribe • Print version • History: r11 < r10 < r9 < r8 • Backlinks • View wiki text • Edit wiki text • More topic actions

## Synonymised species

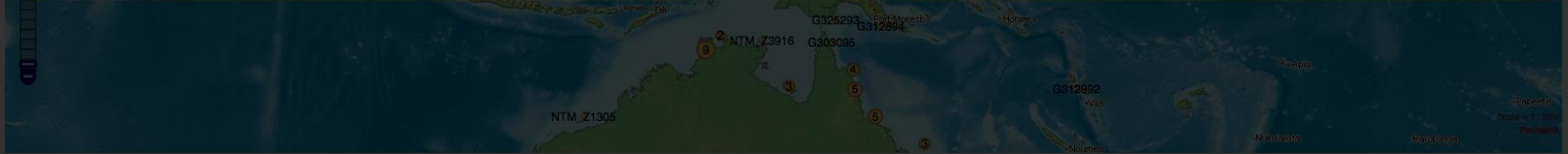
*Cinachyra isis* Lendenfeld, 1907 (genus transfer and junior synonym)  
*Cinachyra malaccensis* Sollas, 1902 (genus transfer and junior synonym)  
*Cinachyra providentiae* Dendy, 1922 (genus transfer and junior synonym)  
*Craniella australiensis* (Carter, 1886) (genus transfer)  
*Spiretella porosa* Lendenfeld, 1888 (genus transfer & junior synonym)  
*Tethya armata* Baer, 1906 (genus transfer and junior synonym)  
*Tethya australiensis* Carter, 1886 (genus transfer)  
*Tetilla cinachyroides* Hentschel, 1911  
*Tetilla lindgreni* Lendenfeld, 1903 (genus transfer & junior synonym)

## View

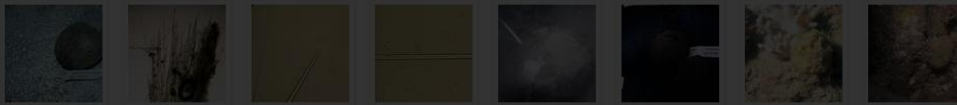
- World porifera database record
- WoRMS record
- WoRMS species record

## OZCAM

No records found for "*Cinachyrella australiensis*"



+ View specimen list



Browse Images

**Classification** Porifera: Demospongiae: Spirosporida: Tetillidae:

**Scientific Name** *Cinachyrella australiensis* (Carter, 1886)

**Growth Form** more or less spherical, short basal attachment.

**Colour** yellowish-brown exterior, sometimes brighter or paler, on deck; beige to grey in ethanol.

**Oscules** numerous, moderately small, in porocalyces, evenly distributed over surface, sometimes inconspicuous.

**Texture** firm, harsh, incompressible.

**Surface Ornamentation** opaque, hispid; even, prominently hispid, with scattered porocalyces, covered in fine silt layer.

**Ectosomal Skeleton** membranous, with distinct multispicular bundles of megascleres radially penetrating surface.

**Choanosomal Skeleton** radially arranged bundles diverging at periphery, with moderately heavy collagen containing ab

**Megascleres** oxaeas: ~7000–9000  $\mu$ m; anatriaenes: >1000  $\mu$ m; protriaenes: >1000  $\mu$ m.

**Microscleres** sigmaspires: 14–20  $\mu$ m; raphides: ~150  $\mu$ m.

**Remarks or Comments** none.

**References** N/A

**Edit History** Author: QM Checked by: K Hall Date: 1 Nov 2009

Edit • Attach • Subscribe • Print version • History: r11 < r10 < r9 < r8 • Backlinks • View wiki text • Edit wiki text • More topic actions



G324253 undw a  
Image 7 of 8

CLOSE X

#### Synonymised species

*Cinachyra isis* Lendenfeld, 1907 (genus transfer and junior synonym)  
*Cinachyra malaccensis* Sollas, 1902 (genus transfer and junior synonym)  
*Cinachyra providentiae* Dandy, 1922 (genus transfer and junior synonym)  
*Craniella australiensis* (Carter, 1886) (genus transfer)  
*Spirella porosa* Lendenfeld, 1886 (genus transfer & junior synonym)  
*Tethya armaia* Baer, 1906 (genus transfer and junior synonym)  
*Tethya australiensis* Carter, 1886 (genus transfer)  
*Tetilla cinachyroides* Hentschel, 1911  
*Tetilla lindgreni* Lendenfeld, 1903 (genus transfer & junior synonym)

#### View

- World porifera database record
- WoRMS record
- WoRMS species record

#### OZCAM

No records found for "*Cinachyrella australiensis*"

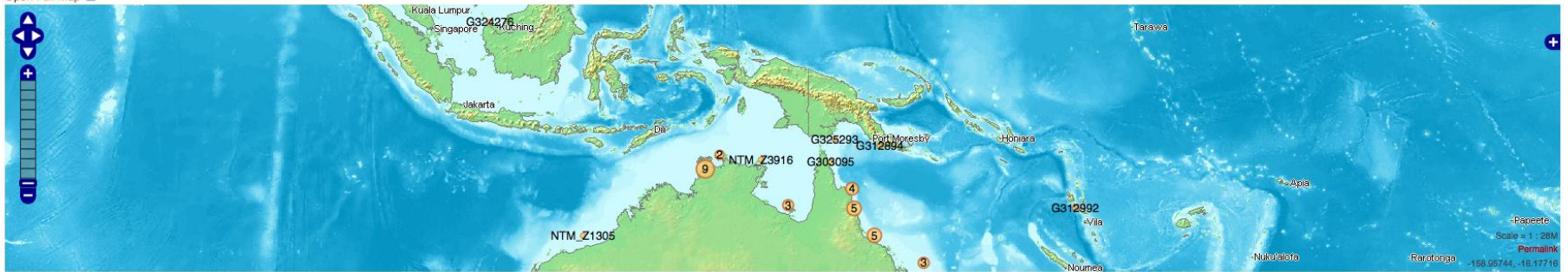


## SpongeMaps: a collaboration tool

Taxa Webs Marine Web Sponge Web Taxa Web OTU0006

OTU0006 *Cinachyrella australiensis* (Carter, 1886) checked

Open Full Map



- Hide specimen list

Specimen	Mapped	Gene	Accession	Notes	Sequence
<a href="#">G300319</a>	✓				
<a href="#">G300331</a>	✓				
<a href="#">G303095</a>	✓				
<a href="#">G303128</a>	✓				
<a href="#">G303291</a>	✓				
<a href="#">G303377</a>	✓				
<a href="#">G303547</a>	✓				
<a href="#">G304079</a>	✓				
<a href="#">G304096</a>	✓				
<a href="#">G305585</a>	✓				

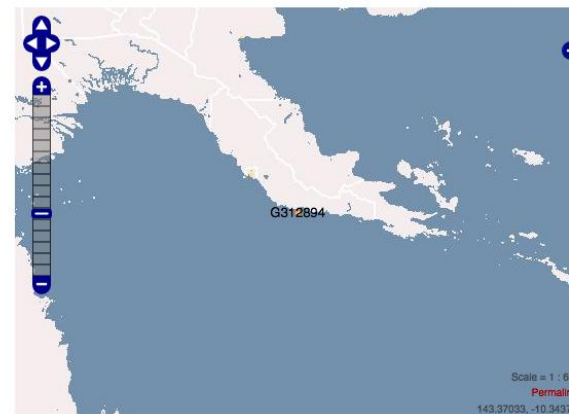
## SpongeMaps: a collaboration tool

Taxa Webs Marine Web Sponge Web Specimens Web G312894

## Specimen registration G312894

**Collection Date** 1996-12-13**Locality Name** Coutance islet, Kupaino, SE Papuan Barrier Reef, Papua New Guinea**Latitude Longitude** -10.218333, 148.102493

27m (88 9/16')

**Habitat** outer reef edge, sheer wall, caverns, overhangs**Identifier** Leys, S**Field Reference** 15894**Collection Code** SMI/Biodiversity**Occurrence ID** urn:lsid:oxcam.taxonomy.org.au:QM:SMI:Specimen:G312894**Institution Code** QM**Basis Of Record** Specimen**Modified** 2009-09-16**Scientific Name** *Cinachyrella australiensis***Scientific Name Authorship** Carter, 1886**Kingdom** Animalia**Phylum** Porifera**Class** Demospongiae**Order** Spirophorida**Family** Tetillidae**Genus** *Cinachyrella***Specific Epithet** australiensis**Coordinate Uncertainty in Meters** 50**Country** Papua New Guinea**Maximum Depth in Meters** 27**Recorded By** Dr Hooper, John**Verbatim Event Date** 13/12/1996**Preparations** Spirit**Date Identified** 1998-01-01

Images						
Link ↕	Image	Environme	Contains	Medium	Notes	Comment Specimens
37272		undw				undw <a href="#">Marine/Sponges/Specimens.G312894</a>



# SpongeMaps: a collaboration tool

Taxa Webs Marine Web Sponge Web Images Web Images 37272

## G312894\_undw.jpg

### Specimens in this photo

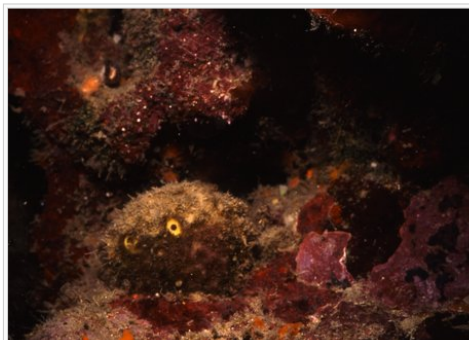
G312894

### Environment

undw

### Original path

0001-1000 Porifera/0001-0100/Sp0006++/G312894\_undw.jpg



undw

Show Attachment(s)

Edit Attach Subscribe Print version History: r1 Backlinks View wiki text Edit wiki text More topic actions

### Other images of this specimen

Image	#	Specimens
	37272	G312894

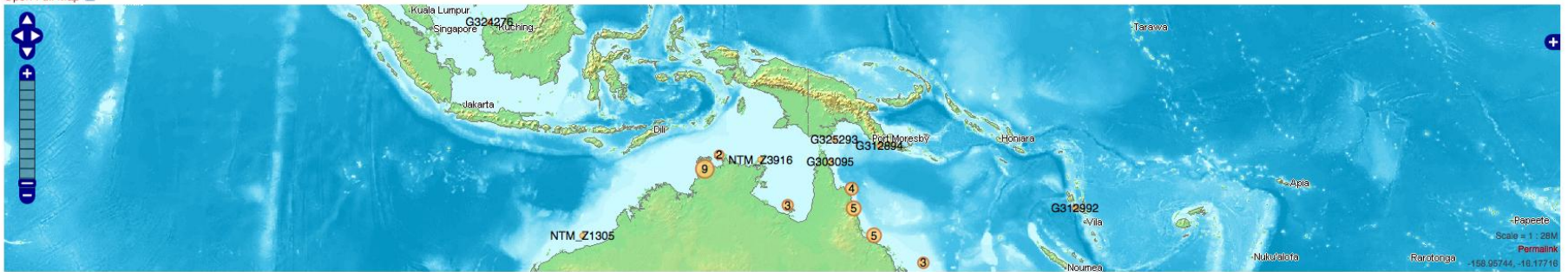


## SpongeMaps: a collaboration tool

Taxa Webs Marine Web Sponge Web Taxa Web OTU0006

OTU0006 *Cinachyrella australiensis* (Carter, 1886) checked

Open Full Map



- Hide specimen list

Specimen	Mapped	Gene	Accession	Notes	Sequence
<a href="#">G300319</a>	✓				
<a href="#">G300331</a>	✓				
<a href="#">G303095</a>	✓				
<a href="#">G303128</a>	✓				
<a href="#">G303291</a>	✓				
<a href="#">G303377</a>	✓				
<a href="#">G303547</a>	✓				
<a href="#">G304079</a>	✓				
<a href="#">G304096</a>	✓				
<a href="#">G305585</a>	✓				



## SpongeMaps: a collaboration tool

Taxa Webs Marine Web Sponge Web Specimens Web G305790

## Specimen registration G305790

**Collection Date** 1995-07-31**Locality Name** Bell Cay, Swain Reefs, Australia, Queensland**Latitude Longitude** -21.8175, 151.235278

28m (91 7/8')

**Habitat** back reef bommies, caves, overhangs, gullies, sand base at 30m**Identifier** Dr Hooper, John**Field Reference** 15595**Collection Code** SMI/Biodiversity**Occurrence ID** urn:lsid:ozcam.taxonomy.org.au:QM:SMI:Specimen:G305790**Institution Code** QM**Basis Of Record** Specimen**Modified** 2009-09-16**Scientific Name** *Cinachyrella australiensis***Scientific Name Authorship** Carter, 1886**Kingdom** Animalia**Phylum** Porifera**Class** Demospongiae**Order** Spirophorida**Family** Tetillidae**Genus** *Cinachyrella***Specific Epithet** australiensis**Coordinate Uncertainty in Meters** 20**State Province** Queensland**Country** Australia**Maximum Depth In Meters** 28**Recorded By** Hooper, J N A, Cook, S D, Kennedy, J A and Tomkins, P A**Verbatim Event Date** 31/7/1995**Preparations** Spirit**Date Identified** 1995-01-01

Images							
Link ↕	Image	Environment	Contains	Medium	Notes	Comment	Specimens
11335		undw				undw	Marine/Sponges/Specimens.G305790



### SpongeMaps: a collaboration tool

- Taxa Webs
- Marine Web
- Sponge Web
- Images Web**
- Images
- 11335

## G305790\_undw\_c.jpg

Specimens in this photo  
G305790

Environment  
undw

Original path  
0001-1000 Porifera/0001-0100/Sp0006++/G305790\_undw\_c.jpg



undw

Show Attachment(s)

Edit • Attach • Subscribe • Print version • History: r1 • Backlinks • View wiki text • Edit wiki text • More topic actions

### Other images of this specimen

Image	#	Specimens
	<a href="#">11335</a>	<a href="#">G305790</a>
	<a href="#">14442</a>	<a href="#">G305790</a>
	<a href="#">17447</a>	<a href="#">G305790</a>
	<a href="#">19038</a>	<a href="#">G305790</a>
	<a href="#">26902</a>	<a href="#">G305790</a>

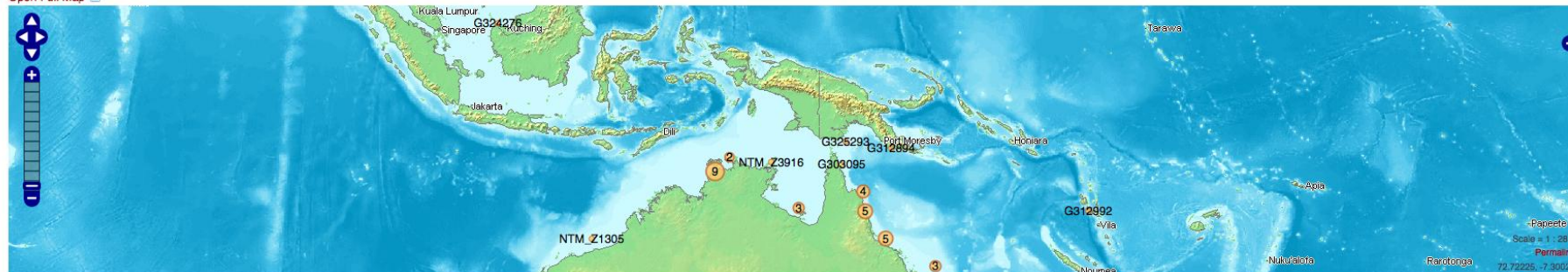


## SpongeMaps: a collaboration tool

Taxa Webs Marine Web Sponge Web Taxa Web OTU0006

OTU0006 *Cinachyrella australiensis* (Carter, 1886) checked

Open Full Map



+ View specimen list



Browse Images

Classification Porifera: Demospongiae: Spirophorida: Tetillidae:

Scientific Name *Cinachyrella australiensis* (Carter, 1886)**Growth Form** more or less spherical, short basal attachment.**Colour** yellowish-brown exterior, sometimes brighter or paler, on deck; beige to grey in ethanol.**Oscules** numerous, moderately small, in porocalyces, evenly distributed over surface, sometimes inconspicuous.**Texture** firm, harsh, incompressible.**Surface Ornamentation** opaque, hispid; even, prominently hispid, with scattered porocalyces, covered in fine silt layer.**Ectosomal Skeleton** membranous, with distinct multispicular bundles of megascleres radially penetrating surface.**Choanosomal Skeleton** radially arranged bundles diverging at periphery, with moderately heavy collagen containing abundant sigmaspires (sometimes lost).**Megascleres** oxeas: ~7000-9000 µm; anatriaenes: >1000 µm; protriaenes: >1000 µm.

## Synonymised species

*Cinachyra isis* Lendenfeld, 1907 (genus transfer and junior synonym)  
*Cinachyra malaccensis* Sollas, 1902 (genus transfer and junior synonym)  
*Cinachyra providentiae* Dendy, 1922 (genus transfer and junior synonym)  
*Craniella australiensis* (Carter, 1886) (genus transfer)  
*Spirella porosa* Lendenfeld, 1888 (genus transfer & junior synonym)  
*Tethya armata* Baer, 1906 (genus transfer and junior synonym)  
*Tethya australiensis* Carter, 1886 (genus transfer)  
*Tetilla cinachyroides* Hentschel, 1911  
*Tetilla lindgreni* Lendenfeld, 1903 (genus transfer & junior synonym)

View



## SpongeMaps: a collaboration tool

Taxa Webs Marine Web Sponge Web Taxa Web OTU0006

### OTU0006 (edit)

Text Form Settings Permissions Help

Title: OTU0006



Words:0

Save Save and Continue Change form Cancel Force new revision



## SpongeMaps: a collaboration tool

Taxa Webs Marine Web Sponge Web Taxa Web OTU0006

# OTU0006 (edit)

Text Form Settings Permissions Help

TaxonProfile/Definitions.Sponge\_OTU\_Form

Sponge_Sp:	Sp0006
Sponge_Specimens:	<input type="text"/>
Sponge_Type:	<input type="text"/>
Sponge_Phylum:	Porifera
Sponge_Class:	Demospongiae
Sponge_Subclass:	(Demospongiae)
Sponge_Order:	Spirrocherida
	(Spirrocherida)

Save Save and Continue Change form Cancel Force new revision

## SpongeMaps: a collaboration tool

Taxa Webs Marine Web Sponge Web Taxa Web OTU0006

# OTU0006 (edit)

Text Form Settings Permissions Help

Sponge\_Colour:

yellowish-brown exterior, sometimes brighter or paler, on deck; beige to grey in ethanol.

Sponge\_Oscles:

numerous, moderately small, in porocalyces, evenly distributed over surface, sometimes inconspicuous.

Sponge\_Texture:

firm, harsh, incompressible.

Sponge\_SurfaceOrnamentation:

opaque, hispid: even, prominently hispid, with scattered porocalyces, covered in fine silt layer.

Sponge\_EctosomalSkeleton:

membranous, with distinct multisicular bundles of mesascieres radially penetrating surface.

Sponge\_ChoanosomalSkeleton:

radially arranged bundles diverging at periphery, with moderately heavy collagen containing abundant sigmaspires (sometimes lost).

Save Save and Continue Change form Cancel Force new revision



## SpongeMaps: a collaboration tool

Taxa Webs Marine Web Sponge Web Taxa Web OTUs

## Operational Taxonomic Units - current

OTU	Genus	Species	Megascleres	Microscleres	AphiaID	AboutURI	References	Remarks	Modified	
1	OTU0006	Cinachyrella	australiensis	oxeas: ~7000-9000 $\mu\text{m}$ ; anatriaenes: >1000 $\mu\text{m}$ ; protriaenes: >1000 $\mu\text{m}$ .	sigmaspires: 14-20 $\mu\text{m}$ ; raphides: ~150 $\mu\text{m}$ .	171296	<a href="http://www.marinespecies.org/aphia.php?p=taxdetails&amp;id=171296">http://www.marinespecies.org/aphia.php?p=taxdetails&amp;id=171296</a>	N/A	none.	25 Nov 2011 - 04:32
2	OTU0266	Craniella	coxi	oxeas: choanosomal, ~890 $\text{\AA}$ $\mu\text{m}$ ; anisoxeas: ectosomal, ~300-500 $\text{\AA}$ $\mu\text{m}$ ; protriaenes: ~1200 $\text{\AA}$ $\mu\text{m}$ .	sigmaspires: ~10 $\text{\AA}$ $\mu\text{m}$ ; spirasters.	367755		N/A	synonyms: <i>Chalinula coxi</i> Lendenfeld, 1885; <i>Tethya dactyloidea</i> Carter, 1869; <i>Tetilla dactyloidea</i> var. <i>lingua</i> Annandale, 1915.	24 Nov 2011 - 22:23
3	OTU0309	Cinachyrella	sp. (OTU 0309)	oxeas: ~ 3500 $\mu\text{m}$ ; anisoxeas: (?), ~3000 $\mu\text{m}$ ; anatriaenes: ~ 2300 $\mu\text{m}$ ; protriaenes: ~2000 $\mu\text{m}$ .	nil.	171287	<a href="http://www.marinespecies.org/aphia.php?p=taxdetails&amp;id=171287">http://www.marinespecies.org/aphia.php?p=taxdetails&amp;id=171287</a>	N/A	none.	24 Nov 2011 - 22:26
4	OTU0333	Cinachyrella	sp. (OTU 0333)	oxeas: strongyloxeas, ~5000-6000 $\mu\text{m}$ ; protriaenes: ~1000 $\mu\text{m}$ .	microxeas: ~200 $\mu\text{m}$ ; sigmaspires: ~10 $\mu\text{m}$ .	171287	<a href="http://www.marinespecies.org/aphia.php?p=taxdetails&amp;id=171287">http://www.marinespecies.org/aphia.php?p=taxdetails&amp;id=171287</a>	N/A	none.	24 Nov 2011 - 22:29
5	OTU0381	Cinachyrella	sp. (OTU 0381)	styles: ~2000 x 25 $\mu\text{m}$ ; protriaenes: 2 classes, 1, ~2500-2800 x 12-15 $\mu\text{m}$ , 2, subtype, rare ~300 x 10 $\mu\text{m}$ .	sigmaspires: ~15-18 $\mu\text{m}$ .	171287	<a href="http://www.marinespecies.org/aphia.php?p=taxdetails&amp;id=171287">http://www.marinespecies.org/aphia.php?p=taxdetails&amp;id=171287</a>	N/A	none.	24 Nov 2011 - 22:28
6	OTU0400	Cinachyrella	sp. (OTU 0400)	oxeas: 2 classes, 1, very long, thin, ~400-800 x 10-20 $\mu\text{m}$ , 2, very large, none intact; anatriaenes: ~900 x 8 $\mu\text{m}$ ; prodiaenes: ~900 x 15 $\mu\text{m}$ ; promonaenes: ~900 x 15 $\mu\text{m}$ .	microxeas: ~90 x 2 $\mu\text{m}$ ; sigmaspires: ~10 x 1.5 $\mu\text{m}$ ; spirasters: ~30 x 1.5 $\mu\text{m}$ .	171287	<a href="http://www.marinespecies.org/aphia.php?p=taxdetails&amp;id=171287">http://www.marinespecies.org/aphia.php?p=taxdetails&amp;id=171287</a>	N/A	promonaenes unable to be located on second observation; likely to be broken prodiaene.	24 Nov 2011 - 22:28
7	OTU0402	Craniella	sp. (OTU 0402)	oxeas: numerous size classes, 28073500 ?m; anatriaenes: hair-like; protriaenes: 280075000 ? 10?20 ?m.	nil.	132093	<a href="http://www.marinespecies.org/aphia.php?p=taxdetails&amp;id=132093">http://www.marinespecies.org/aphia.php?p=taxdetails&amp;id=132093</a>	N/A	none.	24 Nov 2011 - 22:30
8	OTU0404	Cinachyrella	sp. (OTU 0404)	oxeas: 2 size classes, 1, ~1500-4500 x 60-70 $\mu\text{m}$ , 2, ~200 x 15 $\mu\text{m}$ ; anatriaenes: ~3000 x 25 $\mu\text{m}$ ; protriaenes: ~900-3500 x 5-30 $\mu\text{m}$ ; promonaenes: ~1000 x 4 $\mu\text{m}$ .	nil.	171287	<a href="http://www.marinespecies.org/aphia.php?p=taxdetails&amp;id=171287">http://www.marinespecies.org/aphia.php?p=taxdetails&amp;id=171287</a>	N/A	promonaenes unable to be located on second observation; likely to be broken prodiaene.	24 Nov 2011 - 22:30



## SpongeMaps: a collaboration tool

Taxa Webs Marine Web Sponge Web Taxa Web OTU0404

OTU0404 *Cinachyrella* unchecked

Open Full Map



+ View specimen list



Browse Images

Classification Porifera: Demospongiae: Spirophorida: Tetillidae:

Scientific Name *Cinachyrella* sp. (OTU 0404)

Growth Form fragment, probably spherical.

Colour brown exterior, translucent cortex, beige interior (in ethanol).

Oscules no observations.

Texture no observations.

Surface Ornamentation no observations.

Ectosomal Skeleton no observations.

Choanosomal Skeleton no observations.

Megascleres oxeas: 2 size classes, 1, ~1500-4500 x 60-70 μm, 2, ~200 x 15 μm; anatriaenes: ~3000 x 25 μm; protriaenes: ~900-3500 x 5-30 μm; promonaenes: ~1000 x 4 μm.

## Synonymised genera

*Psetalia* Gray, 1873 (unused name)  
*Raphidoletya* Burton, 1934 (junior synonym)  
*Tetilla* (*Cinachyrella*) Wilson, 1925 (status change)  
*Uliczka* de Laubenfels, 1936 (junior synonym)

## View

World porifera database record

WoRMS record

WoRMS genus record



## SpongeMaps: a collaboration tool

Taxa Webs Marine Web Sponge Web Taxa Web OTU0404

OTU0404 *Cinachyrella* unchecked

Open Full Map



- Hide specimen list

Specimen	Mapped	Gene	Accession	Notes	Sequence
G323175		COI	JF773147		GGTCACCAAAATCATAAAACACATTGGGACTCTTTATTATTATTATAGAGCTTTTCGCGATGATAGGAACGCATTTAATATGCTGATTCGGTTAGAAATTATCCGCTCCGGTTCAATCTAGGAGATGATCATTATATAAATOTTATCGTTACCCCCATCCTTTTGTAAATGATATTTTTTTTATGTTAGCCG
NTM_Z1487	✓				



Browse Images

**Classification** Porifera: Demospongiae: Spirophorida: Tetillidae:  
**Scientific Name** *Cinachyrella* sp. (OTU 0404)

**Growth Form** fragment, probably spherical.

**Synonymised genera**

- Peetalia* Gray, 1873 (unused name)
- Raphidolethya* Burton, 1934 (junior synonym)
- Tetilla* (*Cinachyrella*) Wilcox, 1925 (status channa)



## SpongeMaps: a collaboration tool

Taxa Webs Marine Web Sponge Web Taxa Web OTU0404

OTU0404 *Cinachyrella* unchecked

Open Full Map



- Hide specimen list

ATTACCAACTATCTTAAATAT A C CCA AATACAAT ATA AAT CC TTATTT TAT ATCCATTTA TCACA CCTTTTATTATTATTACTTTACCC TATT CC ATACCAAT CTCTTACA ATA AAACTTTAAATAC C TTCTTT ACCC CT A ATCC ATATTACCAACATTTATT TTCTTT TCACCC AAA TTAA



Browse Images

**Classification** Porifera: Demospongiae: Spirophorida: Tetillidae:  
**Scientific Name** *Cinachyrella* sp. (OTU 0404)

**Growth Form** fragment, probably spherical.

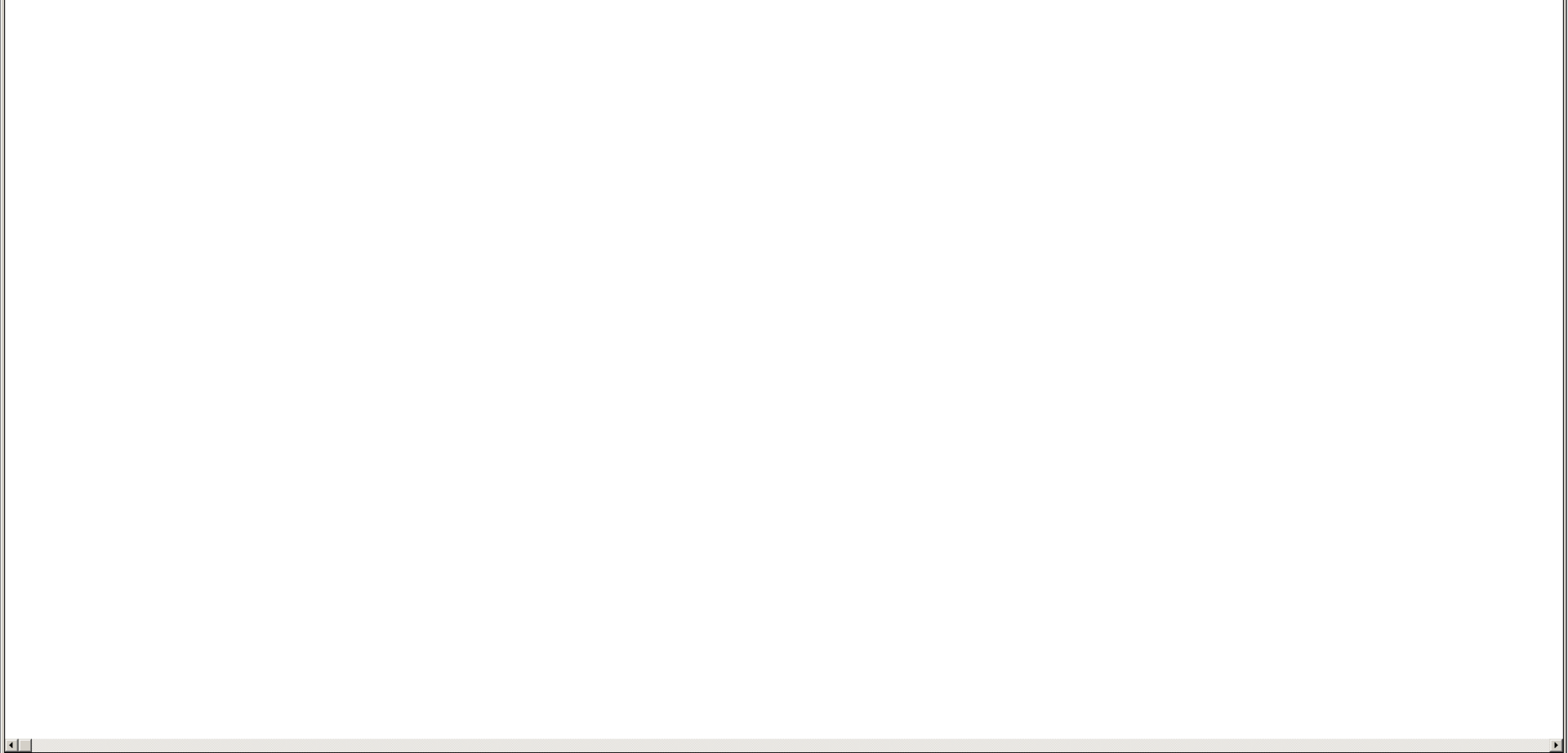
**Synonymised genera**

- Peetalia* Gray, 1873 (unused name)
- Raphidolethya* Burton, 1934 (junior synonym)
- Tetilla* (*Cinachyrella*) Wilcox, 1925 (status channa)



DNA Sequences | Translated Protein Sequences

Species/Abbrv  
1. JF773147 G323175 COI *Cinachyrella* sp. OTUQM0404





# SpongeMaps: a collaboration tool

- Taxa Webs
- Marine Web
- Sponge Web

## Overview

This is a workbench designed around the work practices of scientists studying Porifera Taxonomy and Systematics. It is based on current work practices and is intended as a tool suited for the entire community of scientists who work in this phylum.

Details of Operational Taxonomic Units (OTU's) and specimens are recorded in a consistent way with in a manner based on current practice. The structure of content is similarly flexible. It can be annotated.

Where ever possible, external data sources are used to place content in context: such as OZCAM, the Atlas of Living Australia ( 1, 2, 3), WORMS and Sponge Barcoding Project.

These descriptions are flexible and can be accessed and changed by collaborators via a browser. Changes are recorded. Content can be easily restored to previous versions.

OTU's contain "Mudmaps" of morphological traits and links to associated specimens. Systematic and collaborative description of the Operational Taxonomic Units (OTUs). Specimens are treated separately and linked to OTU's. Phylogenetic trees can also be linked to specimens and OTU's.

Below you will find links to tabular views of

- > OTU - Operational Taxonomic Units
- > Specimens
- > Porifera Phylogeny

## Operational Taxonomic Units

- > OTU - Operational Taxonomic Units
- > Status - whether proposed, provisional or publish
- > Characters - mud maps / Character lists
- > Classification - Higher classification/s

## Specimens

- > Specimens
- > Specimen Images

## Phylogeny

- > Porifera Phylogeny - linked to Specimens / OTU's

## Barcoding

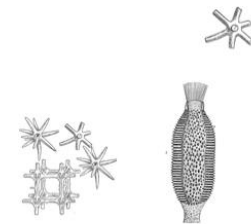
via links to [Sponge Barcoding Project](#)

- > listed in [Specimens](#)
- > listed in [OTU?](#) Operational Taxonomic Units

- > Proposed
  - > OTU1232
  - > OTU2564
  - > OTU2655
  - > ...
- > Provisional
  - > OTU0266
  - > OTU0309
  - > OTU0333
  - > OTU0381
  - > OTU0400
  - > ...



Compare Phylogenies



## SpongeMaps: a collaboration tool

Taxa Webs Marine Web Sponge Web **Specimens Web** Specimens

## Sponge Specimens

Selecting rows and clicking submit will plot the specimen location on a map

Specimens	<input type="checkbox"/>	Registration Number	Locality	Country	Latitude	Longitude	Remarks
1	<input type="checkbox"/>	BMNH_1887_4_26_3	King Island, Mergui Archipelago				not in QM collection
2	<input type="checkbox"/>	BMNH_1887_5_2_23	Prince of Wales Channel, Torres Strait	Australia, Queensland			not in QM collection
3	<input type="checkbox"/>	BMNH_1887_5_2_73	off Cape York, Torres Strait	Australia, Queensland			not in QM collection
4	<input type="checkbox"/>	BMNH_1889_1_21_11	Tuticorin Pearl Banks, Gulf of Manaar				not in QM collection
5	<input type="checkbox"/>	BMNH_1889_1_21_53	Tuticorin Pearl Banks, Gulf of Manaar				not in QM collection
6	<input type="checkbox"/>	BMNH_1889_6_9_3	King Island, Mergui Archipelago				not in QM collection
7	<input type="checkbox"/>	BMNH_1890_6_28_4	Gulf of Manaar				not in QM collection
8	<input type="checkbox"/>	BMNH_1908_2_5_131b					not in QM collection
9	<input type="checkbox"/>	BMNH_1921_11_07_099	Cargados Carajos	Indian Ocean			not in QM collection
10	<input type="checkbox"/>	BMNH_1921_11_7_100	Amirante				not in QM collection
11	<input type="checkbox"/>	BMNH_1930_8_13_142	off North Anchorage				not in QM collection; Burton's specimen
12	<input type="checkbox"/>	BMNH_1934_3_28_112					
13	<input type="checkbox"/>	G000173	Thursday Is	Australia, Queensland			
14	<input type="checkbox"/>	G000295	Moreton Bay	Australia, Queensland			
15	<input type="checkbox"/>	G000392	Moreton Bay	Australia, Queensland			
16	<input type="checkbox"/>	G000471	Caloundra, Sunshine Coast	Australia, Queensland			
17	<input type="checkbox"/>	G000473	no data	no data	no data	no data	no data
18	<input type="checkbox"/>	G000481	Moreton Bay	Australia, Queensland	-27.42	153.33	
19	<input type="checkbox"/>	G000542	Manila region	Philippines	14.62	120.97	
20	<input type="checkbox"/>	G000543	Manila region	Philippines	14.62	120.97	

## SpongeMaps: a collaboration tool

Taxa Webs Marine Web Sponge Web **Specimens Web** Specimens

## Sponge Specimens

Selecting rows and clicking submit will plot the specimen location on a map

Specimens						
<input type="checkbox"/>	Registration Number	Locality	Country	Latitude	Longitude	Remarks
	<input type="text" value="G3140"/>	<input type="text"/>	<input type="text"/>	<input type="text"/>	<input type="text"/>	<input type="text"/>
1	<input type="checkbox"/> G314000	Osprey Reef, Osp 15	Australia, Queensland	-13.943231	146.598483	
2	<input type="checkbox"/> G314001	Off Vanderlyn Island, Gulf of Carpentaria	Australia, Northern Territory			
3	<input type="checkbox"/> G314002	Off Vanderlyn Island, Gulf of Carpentaria	Australia, Northern Territory	-15.185	138.1025	
4	<input type="checkbox"/> G314003	Off Vanderlyn Island, Gulf of Carpentaria	Australia, Northern Territory	-15.185	138.1025	
5	<input type="checkbox"/> G314004	Off Vanderlyn Island, Gulf of Carpentaria	Australia, Northern Territory	-15.185	138.1025	
6	<input type="checkbox"/> G314005	Off Vanderlyn Island, Gulf of Carpentaria	Australia, Northern Territory	-15.050556	138.1175	
7	<input type="checkbox"/> G314006	Off Vanderlyn Island, Gulf of Carpentaria	Australia, Northern Territory	-15.050556	138.1175	
8	<input type="checkbox"/> G314007	Off Vanderlyn Island, Gulf of Carpentaria	Australia, Northern Territory	-15.350833	137.566944	
9	<input type="checkbox"/> G314008	Off Vanderlyn Island, Gulf of Carpentaria	Australia, Northern Territory			
10	<input type="checkbox"/> G314009	Off Vanderlyn Island, Gulf of Carpentaria	Australia, Northern Territory	-15.951667	137.951111	
11	<input type="checkbox"/> G314010	South of Groote Eylandt, Gulf of Carpentaria	Australia, Northern Territory	-14.552222	137.250278	
12	<input type="checkbox"/> G314013	Fairfax I., nw side of reef	Australia, Queensland	-23.851389	152.351944	
13	<input type="checkbox"/> G314014	Fairfax I., nw side of reef	Australia, Queensland	-23.851389	152.351944	
14	<input type="checkbox"/> G314015	Fairfax I., nw side of reef	Australia, Queensland	-23.851389	152.351944	
15	<input type="checkbox"/> G314016	Fairfax I., nw side of reef	Australia, Queensland	-23.851389	152.351944	
16	<input type="checkbox"/> G314017	Fairfax I., nw side of reef	Australia, Queensland	-23.851389	152.351944	
17	<input type="checkbox"/> G314018	Fairfax I., nw side of reef	Australia, Queensland	-23.851389	152.351944	
18	<input type="checkbox"/> G314019	Fairfax I., nw side of reef	Australia, Queensland	-23.851389	152.351944	
19	<input type="checkbox"/> G314020	Fairfax I., nw side of reef	Australia, Queensland	-23.851389	152.351944	
20	<input type="checkbox"/> G314021	Fairfax I., nw side of reef	Australia, Queensland	-23.851389	152.351944	

## SpongeMaps: a collaboration tool


Taxa Webs Marine Web Sponge Web Specimens Web G314017

## Specimen registration G314017

**Collection Date** 21 Feb 1998**Locality Name** Fairfax I., nw side of reef, Australia, Queensland**Latitude Longitude** -23.851389, 152.351944

18m (59 1/16')


**Habitat** sand and bommies**Identifier** Kennedy, John**Field Reference** 15732**Collection Code** SMI/Biodiversity**Occurrence ID** urn:lsid:zoam.taxonomy.org.au:QM:SMI:Specimen:G314017**Institution Code** QM**Basis Of Record** Specimen**Modified** 30 Sep 2010**Scientific Name** *Stylissa* 445**Kingdom** Animalia**Phylum** Porifera**Class** Demospongiae**Order** Halichondrida**Family** Dictyonellidae**Genus** *Stylissa***Specific Epithet** 445**Coordinate Uncertainty in Meters** 20**State Province** Queensland**Country** Australia**Maximum Depth in Meters** 18**Recorded By** Hooper, J N A, Cook, S D, Kennedy, J A and Carroll, A**Verbatim Event Date** 21/2/1998**Preparations** Spirit**Date Identified** 1 Jan 1998

Images						
Link	Image	Environme	Contains	Medium	Notes	Comment
18914		deck				deck
						<a href="#">Marine/Sponges/Specimens.G314017</a>

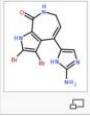
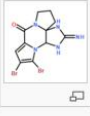
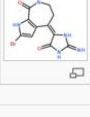
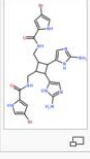
## Compounds





Images							
Link	Image	Environme	Contains	Medium	Notes	Comment	Specimens
18914		deck				deck	Marine/Sponges/Specimens.G314017

## Compounds

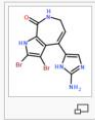
Name	Image	SMILES
<a href="#">Stevesine</a>		<chem>O=C(NCC=C1C2=CN=C(N)N2)C3=C1C(Br)=C(Br)N3</chem>
<a href="#">Dibromophakellin</a>		<chem>O=C1N2C3(CCC2)C(NC(N3)=[NH2+])N4C1=CC(Br)=C4Br</chem>
<a href="#">No Name</a>		<chem>O=C(NCC/C1=C2NC(NC/2=O)=N)C3=C1C=C(Br)N3</chem>
<a href="#">Sceptrin</a>		<chem>O=C(NCC1C(CNC(C2=CC(Br)=CN2)=O)C(C3=CN=C(N)N3)C1C4=CN=C(N)N4)C5=CC(Br)=CN5</chem>

-&gt;

## SpongeMaps: a collaboration tool

[Taxa Webs](#) > [Marine Web](#) > [Sponge Web](#) > [Compounds Web](#) > [Chemical10002](#)

edit

ChemicalName	Stevesine
ChemicalImage	
Comments	
ChemicalSmilesCode	<chem>O=C(NCC=C1C2=CN=C(N)N2)C3=C1C(Br)=C(Br)N3</chem>

## Compounds

## Topic

[G314017](#)[G314610](#)[G315419](#)[G319226](#)[G319398](#)

Number of topics: 5

[Show Attachment\(s\)](#)[Edit](#) • [Attach](#) • [Subscribe](#) • [Print version](#) • [History: r2 < r1](#) • [Backlinks](#) • [View wiki text](#) • [Edit wiki text](#) • [More topic actions](#)

r2 - 2011-11-28 - 16:21:15 - Main:PaulAlexander

[\[cc\]@terms](#) All material on this site is the property of the contributing authors.  
Ideas, requests, problems regarding TRIN Wiki? [Send feedback](#)

FOSWIKI



# SpongeMaps: a collaboration tool

- Taxa Webs
- Marine Web
- Sponge Web

## Overview

This is a workbench designed around the work practices of scientists studying Porifera Taxonomy and Systematics. It is based on current work practices and is intended as a tool suited for the entire community of scientists who work in this phylum.

Details of Operational Taxonomic Units (OTU's) and specimens are recorded in a consistent way with in a manner based on current practice. The structure of content is similarly flexible. It can be annotated.

Where ever possible, external data sources are used to place content in context: such as OZCAM, the Atlas of Living Australia ( 1, 2, 3), WORMS and Sponge Barcoding Project.

These descriptions are flexible and can be accessed and changed by collaborators via a browser. Changes are recorded. Content can be easily restored to previous versions.

OTU's contain "Mudmaps" of morphological traits and links to associated specimens. Systematic and collaborative description of the Operational Taxonomic Units (OTUs). Specimens are treated separately and linked to OTU's. Phylogenetic trees can also be linked to specimens and OTU's.

Below you will find links to tabular views of

- OTU - Operational Taxonomic Units
- Specimens
- Porifera Phylogeny

## Operational Taxonomic Units

- OTU - Operational Taxonomic Units
- Status - whether proposed, provisional or publish
- Characters - mud maps / Character lists
- Classification - Higher classification/s

## Specimens

- Specimens
- Specimen Images

## Phylogeny

- Porifera Phylogeny - linked to Specimens / OTU's

## Barcoding

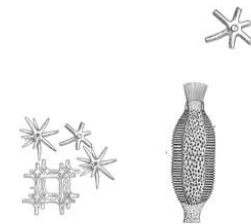
via links to [Sponge Barcoding Project](#)

- listed in [Specimens](#)
- listed in [OTU?](#) Operational Taxonomic Units

- Proposed
  - OTU1232
  - OTU2564
  - OTU2655
  - ...
- Provisional
  - OTU0266
  - OTU0309
  - OTU0333
  - OTU0381
  - OTU0400
  - ...



Compare Phylogenies

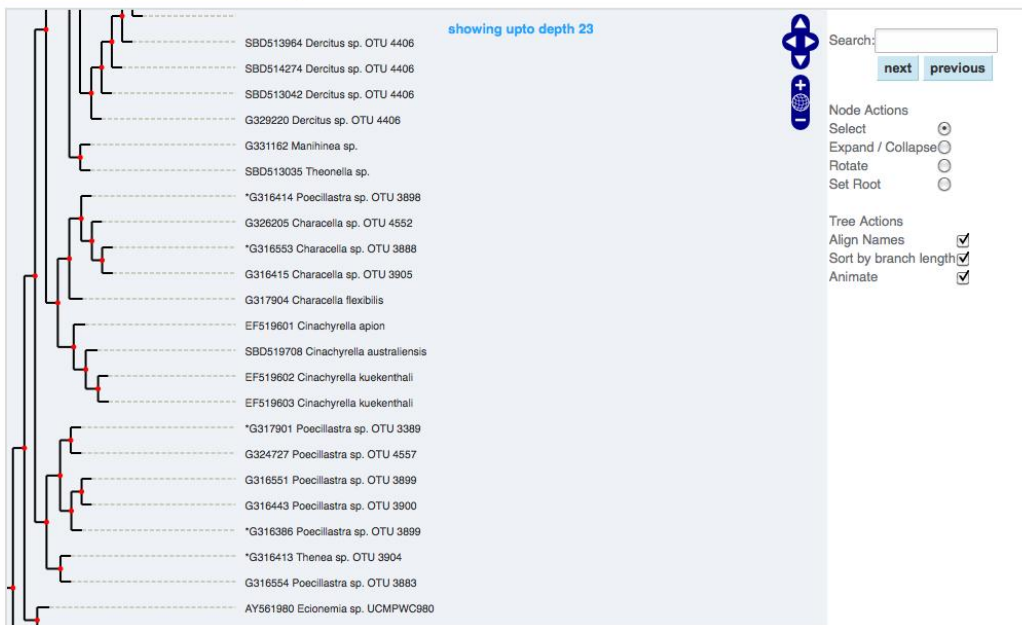






### SpongeMaps: a collaboration tool

- Taxa Webs
- Marine Web
- Sponge Web
- PoriferaPhylogeny
- AstrophoridPhylogeny



Search:

next previous

Node Actions

- Select
- Expand / Collapse
- Rotate
- Set Root

Tree Actions

- Align Names
- Sort by branch length
- Animate

-- Main.GarryJolleyRogers - 2011-05-10

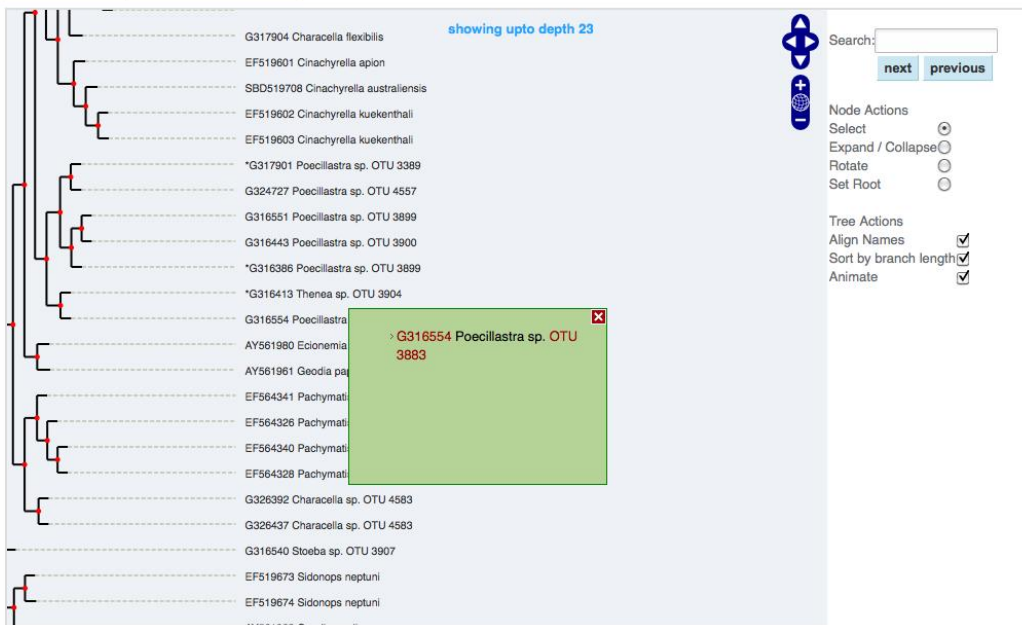
Show Attachment(s)

Edit • Attach • Subscribe • Print version • History: r22 < r21 < r20 < r19 • Backlinks • View wiki text • Edit wiki text • More topic actions



### SpongeMaps: a collaboration tool

- Taxa Webs
- Marine Web
- Sponge Web
- PoriferaPhylogeny
- AstrosporidPhylogeny



-- Main.GarryJolleyRogers - 2011-05-10

Show Attachment(s)


Edit • Attach • Subscribe • Print version • History: r22 < r21 < r20 < r19 • Backlinks • View wiki text • Edit wiki text • More topic actions

## SpongeMaps: a collaboration tool

Taxa Webs Marine Web Sponge Web Specimens Web G316554

## Specimen registration

**Collection Date** 2003-05-12**Locality Name** South Norfolk Ridge,**Latitude Longitude** -34.111833, 171.662167**Identifier** Dr Schlacher, Monika**Collection Code** SMI/Biodiversity**Occurrence ID** urn:lsid:ozcam.taxonomy.org.au:QM:SMI:Specimen:G316554**Institution Code** QM**Basis Of Record** Specimen**Modified** 2010-12-10**Scientific Name** Poecillastra 3883**Kingdom** Animalia**Phylum** Porifera**Class** Demospongiae**Order** Astrophorida**Family** Pachastrellidae**Genus** Poecillastra**Specific Epithet** 3883**Coordinate Uncertainty in Meters** 20**Maximum Depth in Meters** 400**Minimum Depth in Meters** 394**Recorded By** RV Tangaroa, NORFANZ expedition**Verbatim Event Date** 12/5/2003**Preparations** Spirit**Date Identified** 2007-10-05

Link	Image	Environment	Contains	Medium	Notes	Comment	Specimens
38842		deck				deck	<a href="#">Marine/Sponges/Specimens.G316554</a>

-&gt;





# The Future

SpongeMaps will grow to:

- accommodate **additional loci** beyond COI to include other mtDNA and rDNA gene regions
- **refine** taxonomic concepts
- **recruit** more collaborators
- mapping tools for **distribution** and **ecology**
- development as a real-time interactive field guide
- provide **current, evidence-based** content for online portals, such as:
  - **EOL** ([www.eol.org](http://www.eol.org)) and
  - **ALA** ([www.ala.org.au](http://www.ala.org.au)).

