

Available online at www.sciencedirect.com

ScienceDirect

Procedia Computer Science 83 (2016) 946 – 951

Procedia
Computer Science5th International Workshop on Agent-based Mobility, Traffic and Transportation Models,
Methodologies and Applications, ABMTRANS 2016

Braess's paradox in an agent-based transport model

Theresa Thunig^{a,*}, Kai Nagel^a^aTechnische Universität Berlin, Transport Systems Planning and Transport Telematics, Salzufer 17-19, 10587 Berlin, Germany

Abstract

Braess's paradox states that adding a link to the network can increase total travel time in a user equilibrium. In this paper, Braess's paradox is analyzed in the agent-based transport simulation MATSim. It can be observed, that two different types of the paradox occur: In the absence of spill back effects, the delay per agent caused by adding a new link is bounded, i.e. the delay per agent will not increase by extending the time span during which agents depart and, therefore, increasing the number of agents. In the presence of spill back effects, the delay per agent is unbounded. The same holds for the price of anarchy in both cases which gets unbounded if spill back effects are considered. As a consequence, Braess's paradox tends to be underestimated in models that do not capture spill back effects.

© 2016 The Authors. Published by Elsevier B.V. This is an open access article under the CC BY-NC-ND license (<http://creativecommons.org/licenses/by-nc-nd/4.0/>).

Peer-review under responsibility of the Conference Program Chairs

Keywords: Braess's paradox, agent-based simulation, spill back effects, price of anarchy

1. Introduction

Braess's paradox states that adding a link to the network or reducing the travel time on a link can increase total travel time in a user equilibrium. Examples in New York or Stuttgart verified that it is not only a theoretical concept⁷. Transport models that are used to give guidelines to improve traffic should, therefore, be able to reproduce the paradox. In this paper, an approach to model Braess's paradox with the transport simulation MATSim^{5,3} is presented. In contrast to static flow models that have usually been used to analyze Braess's paradox, MATSim is an agent-based transport model with time dependent travel times and a microscopic representation of travelers. To clarify model differences, the original static version of Braess's paradox is presented in the following section.

1.1. Braess's original paradox

Braess's paradox¹ was originally studied in a static flow model, i.e. a model where travel times do not vary over time. Static flow models consider a directed graph where link travel times are given by travel time functions that

* Corresponding author. Tel.: +49-30-314-78783 ; fax: +49-30-314-26269.
E-mail address: thunig@vsp.tu-berlin.de

depend on link flow values. In Braess's setting, there is a fixed amount of traffic that wants to travel from a source to a sink node. It is assumed that travelers are infinitesimally small so that they can arbitrarily split up to different routes. Every traveler routes selfishly intending to minimize his travel time. This results in a so-called user equilibrium, where no user has the incentive to unilaterally change his route. It is well known that a user equilibrium does not necessarily minimize the total travel time, which is the sum of all individual travel times. The relation between total travel time in user equilibrium and system optimum can be interpreted as the inefficiency of selfish routing and is called *price of anarchy* (PoA)⁶. Formally, it is defined as $PoA = C(UE)/C(SO)$, with $C(\cdot)$ giving the total travel time. It may become arbitrarily large even in very simple networks.⁶ Braess's paradox is based on the difference of user equilibrium and system optimum: Consider the network in Fig. 1. There are three routes from source s to sink t : the upper one $s \rightarrow v \rightarrow t$, the middle one $s \rightarrow v \rightarrow w \rightarrow t$ and the lower one $s \rightarrow w \rightarrow t$. Demand consists of one flow unit. Travel time functions are given next to each link. In the user equilibrium, all users use the middle route with a total travel time of two time units. This can be seen as follows: With these loads, travel times are $1 + 1 = 2$, $1 + 0 + 1 = 2$, and $1 + 1 = 2$ on the upper, middle, and lower route, respectively. A deviation of ϵ flow units from the middle to the upper or lower route does not lead to a shorter travel time for the shifted flow but decreases travel time for the middle route, such that shifted flow units switch back to the middle route. By removing the middle link (v, w) from the network, the users split up uniformly to the remaining outer routes in the user equilibrium. Thereby, a shorter total travel time of $3/2$ time units is obtained, which is the system optimum. Thus, one can, paradoxically, *reduce* the total travel time in a user equilibrium by *increasing* link travel times. Analogously, "improving" the traffic network (e.g. by decreasing a link travel time or adding a link) can increase the total travel time in user equilibria.

1.2. Braess's paradox in a time dependent setting

Static flow theory has been the basic framework for many years. However, considering more realistic dynamic flow models, where flow values on links and link travel times may vary over time, a lot of results that hold for static flows cannot be transferred. In dynamic flow models, link travel times are given by constant free flow travel times plus waiting times that users spend in the queue at the end of the links in case link flow capacities are exceeded. Thereby, one can distinguish between models with point queues in which vehicles have no physical length, and models with spatial queues in which queuing vehicles may fill the link such that spill back effects occur. It is well known that Braess's paradox is extendable to time-dependent models. For example, Scarsini et al.⁹ give a dynamic formulation of Braess's paradox in a point queue model. They observe that total travel time in the user equilibrium may improve by removing a link, although the removed link has not been used in the equilibrium in steady state. Crociani and Lämmel² study Braess's paradox in a time-dependent model with spatial queues. They observe that agents experience the congestion delay upstream of the branching point, where there are no possibilities to change the route. In consequence, the travel time of the middle route remains the lowest even in the congested case. Crociani and Lämmel use a cellular automaton based approach, which is a detailed and complex model. In the present paper it is investigated if these observations can be reproduced with a much simpler queue model, and in how far the observations hinge on details of the model such as the existence or not of spatial link representations.

In this paper, both mentioned dynamic versions of Braess's paradox, the one discussed by Scarsini et al. and the one discussed by Crociani and Lämmel, are modeled in MATSim. In the scenario that corresponds to the first version (presented in section 2.1), no spill back effects do occur and the price of anarchy is bounded. It does not increase by extending the time span during which agents depart because the delay that occurs only comes from a fixed number of agents in the beginning of the simulation. In the scenario that corresponds to the second version (presented in section 2.2) spill back effects occur and the price of anarchy is unbounded. As a consequence, Braess's paradox tends to be underestimated in models that do not capture spill back effects. Additionally, this paper presents two methods to avoid the occurrence of Braess's paradox in the modeled scenario in section 3. This exemplifies that it is possible to evaluate transport policies in MATSim that are intended to reduce the effect of Braess's paradox.

2. Modeling Braess's paradox as an agent-based scenario

To analyze Braess's paradox in a dynamic traffic model with spatial queues, the agent-based traffic simulation MATSim⁵ is used. In MATSim, all agents start their trips from links where their activities are located. To bring this

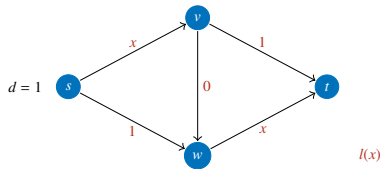


Fig. 1: Braess's static paradox.

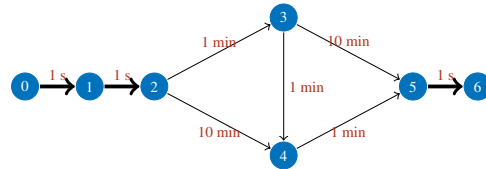


Fig. 2: Braess's paradox in MATSim.

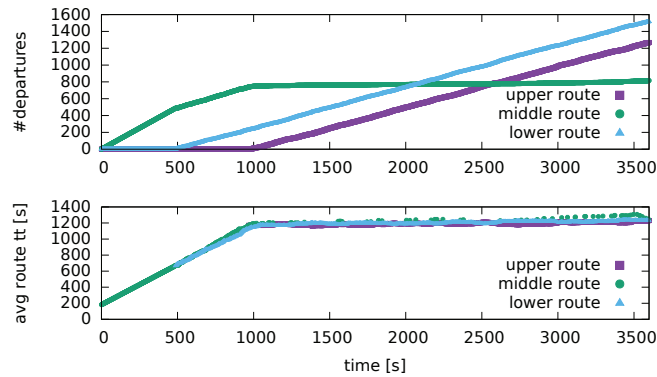
together with Braess's static paradox, where trips start on nodes, some additional links at the start and the end of all routes were added (see Fig. 2). Since MATSim inserts (and removes) agents close to the downstream end of each link, the links were added such that possible congestion at the agent insertion point would be visible.

All agents want to travel from link 0_1 to link 5_6 through the network. One agent is departing every second for one hour, such that there are 3600 agents in total. As in the static case, there are three different routes: the upper, middle and lower route. Additional network adaptations compared to the static Braess's paradox were necessary because of constant free flow travel times in MATSim. The used free-flow travel times of the links are given by the red values in Fig. 2. Congestion is modeled in MATSim by choosing appropriate storage and flow capacities for the links, where the flow capacity determines the number of agents that may exit the link per hour. The network used in this example has a flow capacity of 3600 veh/h on the links that all agents have to use (i.e. links 0_1, 1_2 and 5_6) and a flow capacity of 1800 veh/h on the other links. Agents exceeding this flow capacity have to wait before passing the link and build spatial queues. By this, the link length works as a storage capacity and sets the upper bound for the number of agents that fit onto the link. When this bound is reached, no more agents can enter the link. In other words, an agent may exit its current link and enter the next link on its route if and only if it spent at least the free flow travel time on the current link and the flow capacity of the current link and the storage capacity of the next link are not exceeded. The travel time then is the sum of free flow travel times and waiting times.

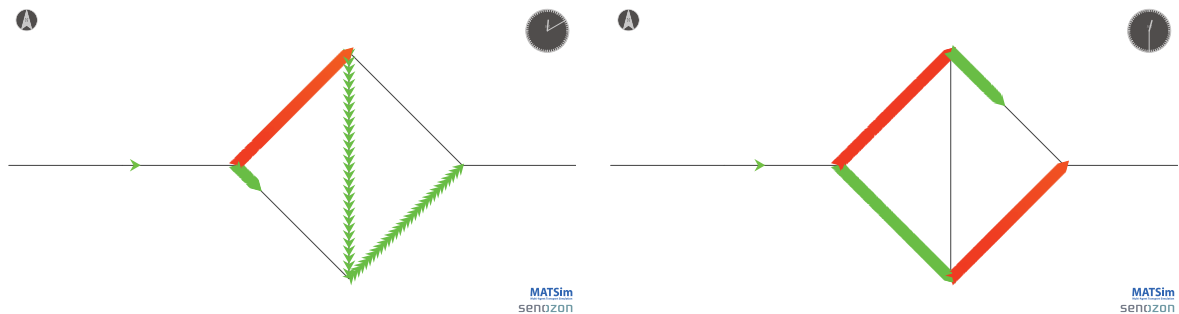
2.1. Braess's paradox with bounded price of anarchy

Because of the existence of spatial queues in MATSim, the price of anarchy may become unbounded. To illustrate this condition, the first scenario is configured such that MATSim's spatial queues never take effect. This is done by using very long links (i.e. with a high storage capacity value), so that the number of agents that would cause spill back is never reached. Queuing agents then increase link travel time arbitrary instead of spilling back. As a consequence, previously slower routes become attractive and agents start to use them. Fig. 3a depicts the number of departures and the average travel time on the routes over the time in seconds. The lower plot shows the average travel time for an agent that departs at the specific time. The number of departures on the routes in the upper plot sums all past departures of agents that use the specific route; if a line increases, currently starting agents use this route. For the first ~8 min. (until second 500) of this simulation run all agents use the middle route. The travel time of the route increases, as the agents accumulate at link 2_3 without spilling back. Around second 500 the travel time on link 2_3 reaches 9 min. such that the lower route becomes attractive and agents start to use it. The visualization snapshot at second 600 in Fig. 3b also illustrates this; agents are colored depending on their delay from green to red. For the next ~8 min. (until second 1000) both routes are used alternately such that the agents accumulate at link 4_5. Travel time at this link and therefore on both routes increases. Around second 1000, the upper route becomes attractive as the snapshot of second 1800 in Fig. 3c shows. From now on, hardly any agent uses the middle route. Delay would only increase on link 2_3 or 4_5, respectively. The agents uniformly distribute to the outer routes and experience free speed travel time plus waiting time resulting from the initial "inefficient" usage of the middle route. Hence, the travel time of all routes is balanced with ~1200 s. (i.e. 20 min.) in steady state.

In this scenario, all delay results from the "inefficient" usage of the middle route in the initial phase. Once in steady state, no more delay is accumulated. In other words, when extending the time span during which agents depart, and therefore increasing the number of simulated agents, the travel time per agent in the user equilibrium would not increase any further. The price of anarchy as the ratio of total travel time in user equilibrium and system optimum, is therefore bounded.



(a) Number of agents and travel times on the routes over time. Initially, the middle route is used, then increasingly the others, until at time ~ 1000 flow is distributed half/half between the outer routes.



(b) Visualization snapshot of second 600. The first agents start to use the lower route.

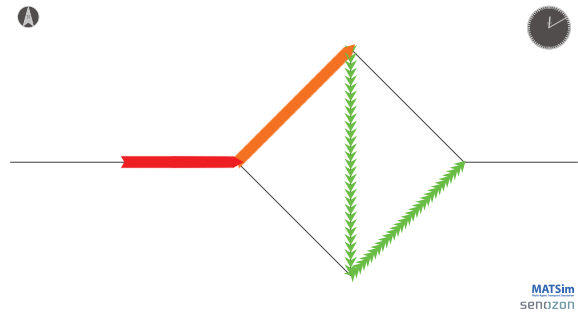
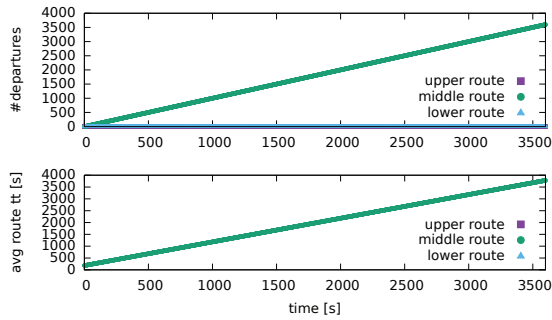
(c) Visualization snapshots of second 1800. The first agents start to use the upper route.

Fig. 3: Results for a run without spill back.

2.2. Braess's paradox with unbounded price of anarchy

There is another dynamic version of Braess's paradox that can be observed here: The case where agents still accumulate delay in steady state. Hence, delay becomes unbounded: For every fixed delay one could construct a scenario with a higher delay per agent; simply extend the time span during which agents depart because the delay increases for every additional agent. In MATSim, an unbounded delay is reached by shorten links 2_3 and 4_5 (i.e. decreasing its storage capacity). Spatial queues then cause a spill back effect that expands the congestion ahead of branching node 2. As shown in Fig. 4, all agents use the middle route. Delay increases unboundedly over time. The agents do not switch to the outer routes because the number of agents that queue on link 2_3 is not high enough to increase the travel time to 9 min. or more. Congestion spills back to the first links of the route as the visualization snapshot of second 600 in Fig. 4b illustrates. Agents experience the congestion delay where there are no possibilities to change the route. When an individual agent reaches node 2, the middle route is always the shortest.

A uniform distribution of the agents on the outer routes leads to shorter travel times. Still, this does not constitute a user equilibrium since every single agent can reduce his travel time by switching to the middle route. Tab. 1 compares total travel times and route distributions of the different scenarios. It also contains the results of a perfect uniform distribution of agents on the outer routes, i.e. the system optimum. In this setting (with one agent per second for one hour) the total travel time in the user equilibrium of the scenario with bounded delay (3.7×10^6 s.) is 1.6 times than the system optimal total travel time (2.3×10^6 s). The price of anarchy therefore is 1.6. In the scenario with unbounded delay, the price of anarchy is 3.0 because total travel time (7.1×10^6 s.) is 3.0 times than in the system optimum.



(a) Number of agents and travel times on the routes over time. (b) Visualization snapshot of second 600. All agents use the middle route and queue up to the first link.

Fig. 4: Results for a run with spill back.

scenario	figure	total tt	#up	#mid	#low
no spill back	3	3795793	1269	816	1515
spill back	4	7133291	0	3600	0
SO	-	2386634	1800	0	1800
without 3_4	5a	2462885	1828	0	1772
signal at 4	5b	2514324	1801	34	1765

Table 1: Comparison of total travel time (in seconds) and number of agents on the routes.

3. Avoiding Braess’s paradox in the agent based scenario

Motivated by the possibly unbounded price of anarchy in the dynamic version of Braess’s paradox discussed in section 2.2, this section presents methods to reduce the price of anarchy in the given scenario by introducing some transport policy. A well-known way to decrease the total travel time in the user equilibrium in Braess’s original paradox is to delete the middle link 3.4. Fig. 5a shows the corresponding results in this setting. Without link 3.4, the middle route is no longer available. The agents distribute themselves to the two remaining routes. As a consequence of the strategy profile used in MATSim, this distribution cannot be perfect. A delay, which had at some point in time been caused by a non-perfect distribution, can never be reduced. This is due to network capacities being defined as equal to the demand on the corresponding route. Hence, by extending the time span during which agents depart, they would accumulate increasingly. One can observe this accumulation in the lower part of Fig. 5a where travel times increase with increasing departure times. The figure also shows that route travel times are not balanced at every departure time, as it is the case in a user equilibrium. In comparison to the previous figures, the scaling of average travel times has changed. Travel time differences in this scenario are at most 50 s. In previous figures, one would even not be able to see such small differences. Nevertheless, the total travel time of this scenario without the middle link nearly reaches the system optimal total travel time (see lower part of Tab. 1). In comparison to the previous scenario, the total travel time reduces to a third (from 7.1×10^6 s. to 2.4×10^6 s.). The price of anarchy reduces to 1.0.

An alternative idea to avoid the occurrence of Braess’s paradox is to add signals that control traffic flow and reduce capacity of the middle route. Clearly, installing a traffic signal on the middle link and setting it permanently to red has the same effect as closing the link. However, with a signal that is only red most of the time, this is not as obvious: For example, installing such a signal for the right turn at node 3 would cause a huge jam since cars going straight would be caught behind queuing cars. This issue could be resolved by separate turning lanes. To show that this is also feasible without separate turning lanes, we place a signal at node 4. At this node, there are two conflicting traffic streams that enter link 4.5. Fig. 5b presents the results of this scenario with a signal at node 4 that only allows one

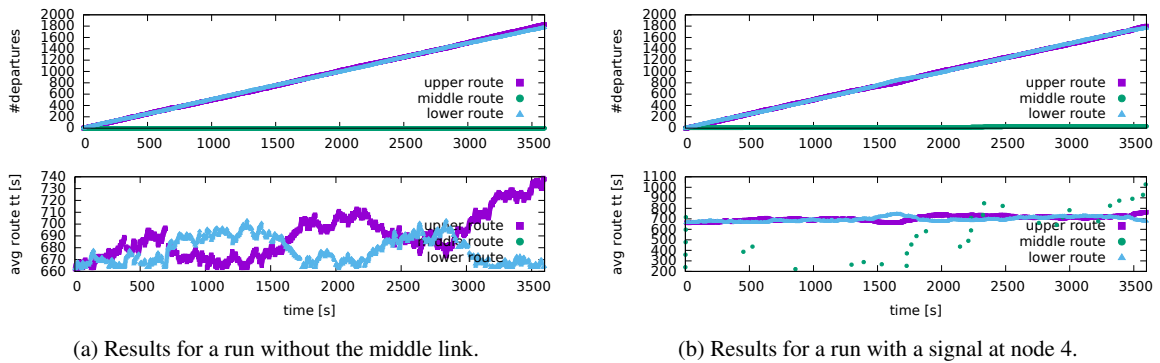


Fig. 5: Number of agents and travel times on the routes over time. Flow distributes almost uniformly to the outer routes.

direction to pass the intersection at every time. To avoid the use of the middle route, the signal sets link 3_4 to "green" for only one second, while it sets link 2_4 to "green" for the rest (59 s.) of the cycle time. The agents distribute almost uniformly to the outer routes. Only a few agents use the middle route as depicted by the green dots in the lower part of Fig. 5b. Total travel time in the user equilibrium reduces to 2.5×10^6 , as shown in Tab. 1, which implies again a reduction of the price of anarchy to 1.1. A green split optimization algorithm that minimizes total travel time⁴ might thus be able to detect such a solution.

4. Conclusion

In this paper, scenarios for the agent-based transport simulation MATSim that display the occurrence of Braess's paradox were presented. Two different scenarios were examined where the price of anarchy and the delay per agent is bounded or unbounded, respectively, depending on the presence of spill back effects. This categorizes two types of Braess's paradox in the dynamic case and leads to the implication that Braess's paradox tends to be underestimated in models that do not capture spill back effects. Additionally, it was analyzed how to avoid the occurrence of Braess's paradox. A future challenge is to algorithmically determine a traffic policy that pushes agents to system-improving routes. So far, the presented policies were only manually determined. This is not trivial, because the question whether a scenario contains Braess's paradox is NP-hard⁸, i.e. has a high complexity in theory. Therefore, finding a mechanism that detects Braess links, i.e. links that should be removed, is even harder. Finally, the case study has shown that MATSim is able to evaluate traffic policies that avoid the occurrence of Braess's paradox.

References

1. BRAESS, D. Über ein Paradoxon aus der Verkehrsplanung. *Unternehmensforschung* 12 (1968), 258–268.
2. CROCIANI, L., AND LÄMMEL, G. Multi-destination pedestrian flows in equilibrium: a cellular automaton based approach. *Computer-Aided Civil and Infrastructure Engineering* (forthcoming).
3. HORNI, A., NAGEL, K., AND AXHAUSEN, K. W., Eds. *The Multi-Agent Transport Simulation MATSim*. Ubiquity Press, in preparation. See <http://matsim.org/the-book>.
4. KÖHLER, E., AND STREHLER, M. Traffic signal optimization using cyclically expanded networks. *Networks* (2015).
5. MATSIM WEBSITE. MultiAgent Transport Simulation, accessed 2016. See <http://matsim.org/>.
6. PIGOU, A. *The Economics of Welfare*. MacMillan, New York, 1920.
7. RAPOPORT, A., KUGLER, T., DUGAR, S., AND GISCHES, E. J. Choice of routes in congested traffic networks: Experimental tests of the braess paradox. *Games and Economic Behavior* 65, 2 (3 2009), 538–571.
8. ROUGHGARDEN, T. On the severity of braess's paradox: Designing networks for selfish users is hard. *Journal of Computer and System Sciences* 72, 5 (2006), 922–953. Special Issue on FOCS 2001.
9. SCARSINI, M., SCHRÖDER, M., AND TOMALA, T. Dynamic atomic congestion games with seasonal flows. *HEC Paris Research Paper, ECO/SCD-2013-1016* (2015).