

UNIVERSITY *of* York

This is a repository copy of *Chronological classification of ancient mortars employing spectroscopy and spectrometry techniques : Sagunto (Valencia, Spain) case*.

White Rose Research Online URL for this paper:
<https://eprints.whiterose.ac.uk/130462/>

Version: Accepted Version

Article:

Ramacciotti, Mirco, Rubio, Sonia, Gallelo, Gianni et al. (6 more authors) (Accepted: 2018)
Chronological classification of ancient mortars employing spectroscopy and spectrometry techniques : Sagunto (Valencia, Spain) case. *Journal of Spectroscopy*. ISSN 2314-4939 (In Press)

Reuse

This article is distributed under the terms of the Creative Commons Attribution (CC BY) licence. This licence allows you to distribute, remix, tweak, and build upon the work, even commercially, as long as you credit the authors for the original work. More information and the full terms of the licence here:
<https://creativecommons.org/licenses/>

Takedown

If you consider content in White Rose Research Online to be in breach of UK law, please notify us by emailing eprints@whiterose.ac.uk including the URL of the record and the reason for the withdrawal request.



eprints@whiterose.ac.uk
<https://eprints.whiterose.ac.uk/>

Chronological classification of ancient mortars employing spectroscopy and spectrometry techniques: Sagunto (Valencia, Spain) case.

Ramacciotti M.^{1,2}, Rubio S.², Gallelo G.*^{1,2,3}, Lezzerini M.^{4,5}, Columbu S.⁶, Hernandez E.⁷, Morales-Rubio A.², Pastor A.², de la Guardia M.²

¹ Department of Prehistory, Archaeology and Ancient History, Faculty of Geography and History University of Valencia, Av. Blasco Ibáñez, 28, 46010, Valencia (Spain).

² Department of Analytical Chemistry, Faculty of Chemistry, University of Valencia, C/ Dr. Moliner, 50, 46100, Burjassot, Valencia (Spain).

³ Department of Archaeology, University of York, King's Manor, YO1 7EP, York (UK).

⁴ Department of Earth Sciences, University of Pisa, Via S. Maria, 53, 56126, Pisa (Italy).

⁵ Applied and Laser Spectroscopy Lab., ICCOM-CNR, Via G. Moruzzi, 1, 56124, Pisa (Italy)

⁶ Department of Chemical and Geological Sciences, University of Cagliari, Via Trentino 51, 09127 Cagliari, Italy.

⁷ Sagunto Archaeological Museum, C/ del Castillo, 23, 46500, Sagunto, Valencia (Spain).

Abstract

Forty-two mortar samples, from two archaeological excavations located in Sagunto (Valencian Community, Spain), were analysed by both portable energy dispersive X-ray fluorescence spectroscopy (pED-XRF) and inductively coupled plasma mass spectrometry (ICP-MS) to determine major and minor elements, and traces including rare earth elements (REE). Collected data were crossed with those previously obtained from Sagunto Castle mortars and principal component analysis (PCA) was applied to discriminate the construction phases of the unearthed buildings. REE permitted to ascribe most of the masonries to the Roman Imperial period. Moreover, a statistical model was built by employing partial least squares discriminant analysis (PLS-DA) in order to classify the mortars from Roman Imperial period and from Islamic period, due to the problematic overlapping between these two phases. Results confirmed the effectiveness of the developed indirect chronology method, based on REE data, to discriminate among historic mortars from different construction periods on a wide scale including different Sagunto archaeological sites.

Keywords: pXRF, ICP-MS, ancient mortars, building materials, rare earth elements, Imperial period, Islamic period.

***Corresponding author: Gianni Gallelo**

Tel. : +4407949999321

E-mail: gianni.gallelo@york.ac.uk

E-mails: mirco@alumni.uv.es, sorubar@alumni.uv.es, gianni.gallelo@york.ac.uk,
marco.lezzerini@unipi.it, columbus@unica.it, hernandez_emi@gva.es, angel.morales@uv.es,
agustin.pastor@uv.es, miguel.delaguardia@uv.es

1. Introduction

Mortar is a building material composed essentially by binder and aggregate fractions and, in some cases, by additives of different types [1-3]. In particular, lime mortar had a key function in Roman architecture: Roman people made their walls and structures with this material adding reactive materials, like pozzolan materials (i.e. *pulvis puteolanus*, *cocciopesto*), to give a hydraulic character to the mortars [4-8]. The use of mortar in architecture is documented during the Middle Ages and in the following historical periods [6-13].

The chemical analysis by statistical approach, together with mineralogical and petrographic characterization of ancient mortars and polished stones has shown to be a useful tool in the interpretation of the construction phases of several archaeological sites and historical complexes [14-20]. Moreover, ancient mortars are subjected to decay phenomena which must be also detected and evaluated for conservation issues [21-24].

This paper shows the results of the analyses carried out on ancient mortars collected from buildings discovered during two recent archaeological excavations at Sagunto, a town located in the Eastern Spain, ca. 30 km north of Valencia, close to the Costa del Azahr on the Mediterranean Sea. Sagunto is well known in the world for its complex history and its area has been occupied since the Iberian Age. During the Roman period, Sagunto was interested by the construction of important buildings such as the Circus and the Theatre. Hereafter, Sagunto was occupied by Islamic people and during the Modern Ages the city was involved by the Napoleonic Wars [25].

The collected mortar samples were analysed by both portable energy dispersive X-ray fluorescence spectroscopy (pED-XRF) and by an inductively coupled plasma mass spectrometer (ICP-MS) to determine their major elements, minor elements and trace elements. The mineral element concentration and, in particular, the measured contents of rare earth elements (REE) of these samples were compared with those previously obtained from Sagunto Castle [26] applying principal

component analysis (PCA) and partial least squares discriminant analysis (PLS-DA) to determine the construction periods.

2. Materials and methods

2.1 Sampling

The studied mortars (Table 1) were sampled during two archaeological excavations located in the city of Sagunto (Figure 1). Twenty-nine samples were collected during the archaeological excavation of Los Huertos St., an area characterized by the presence of buildings and materials from the Roman Imperial phase and from the Islamic occupation in the Middle Ages. Twenty-three samples of lime mortars were collected from these buildings: nine samples come from the Circus (C), a building dating back to the Roman Imperial period, one from the cloaca (CLC), one from a jamb (JMN), two from two different walls (Eastern Wall, EW, and Northern Wall, NW), one from a noria (NR), four from a pilaster (P). Six samples of earth mortar come from two rooms that the archaeologists interpreted as may belonging to the Islamic occupation (Room 1 the samples R1, and Room 2 the samples R2) and in this study were analysed as control samples. Two sample of lime mortar were collected from the Room 3 (R3), two from an unidentified building (UN) and one from a well (WLL). Thirteen samples of lime mortars were collected from different masonries during the emergency archaeological excavation of an area close to Sagunto's Railroad Station (RS named samples). Data of twenty-three lime mortar samples from different buildings of the Castle of Sagunto, studied by Gallelo et al. 2017 [26], were taken into account as calibration set to perform data analysis and to date the structures of the above quoted excavations. Part of the calibration samples come from masonries dating back to the Roman Imperial Period: five samples from the Theatre (TR) and one from the Curia (CUR); the other samples come from masonries dated to the Islamic occupation phase: four samples of the first part of the Islamic Wall (MI), one of a wall which was considered modern before the study (MM), one from an Hermitage (ERM), two from two Islamic reworks of the Torre Central Estudiantes (TCE) and two from the *tabernae* of the Imperial Forum. Moreover, two samples from the Curia (CUR) and five samples from the Basilica of the Imperial Forum (FBI), whose dating was uncertain between the above quoted two phases, were added to the data set.

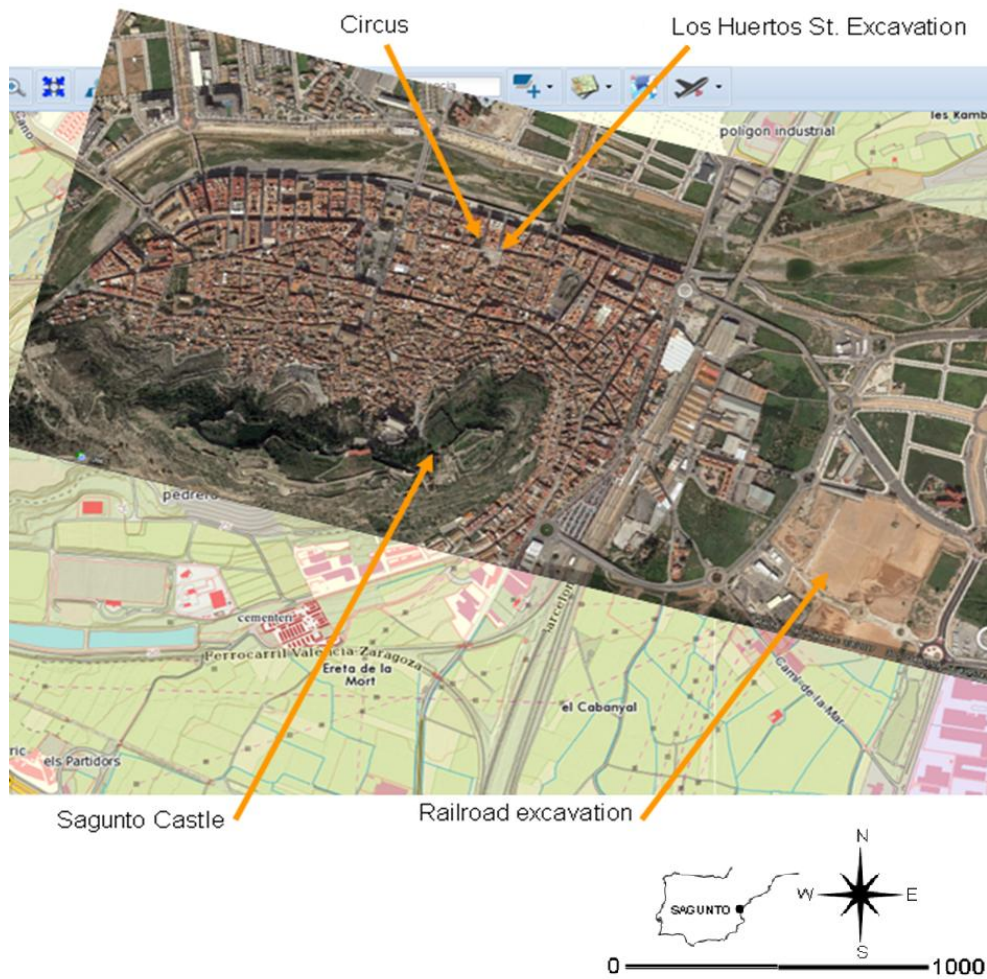


Figure 1. Map of the city of Sagunto with the area of sampling (the satellite picture was obtained by Google Earth while the map of Sagunto by the Institut Cartogràfic Valencià, <http://www.icv.gva.es>).

Sample	Archaeological excavation	Building	Mortar type	Sample	Archaeological excavation	Building	Mortar type
C05	Los Huertos Street	Circus MSU1005	Lime mortar	WLL	Los Huertos Street	Well	Lime mortar
C06	Los Huertos Street	Circus MSU1006	Lime mortar	RS10A	Railroad Station	MSU1010a	Lime mortar
C07	Los Huertos Street	Circus MSU1007	Lime mortar	RS10B	Railroad Station	MSU1010b	Lime mortar
C08	Los Huertos Street	Circus MSU1008	Lime mortar	RS10C	Railroad Station	MSU1010c	Lime mortar
C09	Los Huertos Street	Circus MSU1009	Lime mortar	RS11A	Railroad Station	MSU1011a	Lime mortar
C10a	Los Huertos Street	Circus MSU1010a	Lime mortar	RS11B	Railroad Station	MSU1011b	Lime mortar
C10b	Los Huertos Street	Circus MSU1010b	Lime mortar	RS11C	Railroad Station	MSU1011c	Lime mortar
C20	Los Huertos Street	Circus MSU1020	Lime mortar	RS24A	Railroad Station	MSU1024a	Lime mortar
C26	Los Huertos Street	Circus MSU1026	Lime mortar	RS24B	Railroad Station	MSU1024b	Lime mortar
CLC	Los Huertos Street	Cloaca	Lime mortar	RS24C	Railroad Station	MSU1024c	Lime mortar
EW	Los Huertos Street	Eastern Wall	Lime mortar	RS25A	Railroad Station	MSU1025a	Lime mortar
JMN	Los Huertos Street	Northern Jamb	Lime mortar	RS25B	Railroad Station	MSU1025b	Lime mortar
NR	Los Huertos Street	Noria	Lime mortar	RS25C	Railroad Station	MSU1025c	Lime mortar
NW	Los Huertos Street	Northern Wall	Lime mortar	RSLW	Railroad Station	Long Wall	Lime mortar
P15	Los Huertos Street	Pilaster MSU3015	Lime mortar				
P16	Los Huertos Street	Pilaster MSU3016	Lime mortar	Sample	Archaeological excavation	Building	Mortar type
P17	Los Huertos Street	Pilaster MSU3017	Lime mortar	R1a	Los Huertos Street	Room 1 MSU3029	Earth mortar
P18	Los Huertos Street	Pilaster MSU3018	Lime mortar	R1b	Los Huertos Street	Room 1 MSU3030	Earth mortar
R3a	Los Huertos Street	Room 3 MSU1032	Lime mortar	R1c	Los Huertos Street	Room 1 MSU3039	Earth mortar
R3b	Los Huertos Street	Room 3 MSU1050	Lime mortar	R2a	Los Huertos Street	Room 2 MSU3062	Earth mortar
UN1	Los Huertos Street	Unknown MSU3038	Lime mortar	R2b	Los Huertos Street	Room 2 MSU3063	Earth mortar
UN2	Los Huertos Street	Unknown MSU6006	Lime mortar	R2d	Los Huertos Street	Room 2 MSU3064	Earth mortar

Note: MSU: Masonry Stratigraphic Unit

Table 1. Sample description including area and building of sampling sites, and mortar type.

2.2 Major and minor elements determination

All the analyses were carried out on each entire mortar sample previously pulverized ($D_{max} < 63 \mu\text{m}$) and homogenized through agatha mortar and pestle. Major and minor element concentrations were obtained by using a S1 Titan energy dispersive portable X-ray fluorescence spectrometer (pED-XRF) from Bruker (Kennewick, Washington DC, USA) equipped with a Rh X-ray tube and X-Flash@SDD detector. Geochem-trace calibration was used to perform the quantitative analyses and S1Sync software from Bruker was employed to measure Al_2O_3 , SiO_2 , CaO , Ti and Fe . The accuracy of the measurements was verified by using the following certified reference materials: soil NIM GBW07408 and limestone NCS DC60108a (Table 2). All the reading's standard errors range between 1 and 5 wt%, except for Al_2O_3 measured on NCS DC60108a, whose standard deviation increase up to 22 wt% for concentration less than 0.5 wt% probably due to the low sensitivity of the instrument for the determination of this element.

Element	NIM GBW07408		NCS DC60108a	
	Certified	Measured	Certified	Measured
Al_2O_3	11.92 ± 0.15	12.06 ± 0.81	0.33 ± 0.03	0.61 ± 0.19
SiO_2	58.61 ± 0.13	52.87 ± 3.71	2.09 ± 0.06	2.76 ± 0.05
CaO	8.27 ± 0.12	8.60 ± 0.28	51.61 ± 0.15	50.31 ± 3.15
Ti	0.38 ± 0.01	0.37 ± 0.01	0.009 ± 0.001	N/D
Fe	3.13 ± 0.03	3.27 ± 0.09	0.12 ± 0.02	0.15 ± 0.01

Note: Certified and measured values of the analyzed elements. The values are expressed as weight percentages (wt%). N/D: Not detected.

Table 2. Accuracy of pED-XRF analysis evaluated through the use of CRM (soil NIM-GBW07408 and limestone NCS DC60108a) reference samples. As regards NCS DC60108a, not detected Ti concentration and uncertainty of Al_2O_3 determination in limestone sample are related to the sensitivity of the spectrometer.

2.3 Trace elements and REE determination

Previously pulverized and homogenized samples of each entire mortars were prepared for inductively coupled plasma mass spectrometry (ICP-MS) analysis. The mortars digestion method was developed by Gallelo et al. 2017 [26] in order to provide reproducible and comparable results compatible with the sensitivity of the analytical method employed. The wet digestion consisted in the addition of 1.35 mL of HCl (37%) and 0.45 mL of HNO_3 (69%) to ca. 0.15 g of each sample in glass tubes, which were heated in a boiling water bath for about 40 min. Then, the solutions were poured into plastic tubes and brought up to 25 mL with purified water. The concentration of the

following elements: Ba, Bi, Cd, Cr, Co, Cu, Pb, Li, Mn, Mo, Ni, Sr, Tl, V, Zn and REE (La, Ce, Pr, Nd, Sm, Eu, Gd, Tb, Dy, Ho, Er, Tm, Yb, Lu) Sc and Y were determined. Two multi-element stock solutions for ICP analysis in HNO₃ 5%, containing the above-quoted elements at a concentration of 1000 mg/L, were used as stock standards for calibration. 5 mL volumetric flasks were used adding the corresponding volume of standard solutions 0.15 mL of HNO₃, 0.45 mL of HCl and the water necessary to reach the final volume. The concentration of trace elements ranges from 1 µg/L to 600 µg/L except for REE, Y and Sc that ranges from 1 µg/L to 100 µg/L. The measurement accuracy was verified by using the certified reference materials soil NIM GBW07408 and limestone NCS DC60108a. As internal standard, 50 µL of a 1000 mg/L Rh solution were added to each sample and to each calibration standard. The analyses were performed through an Agilent 7900 inductively coupled plasma mass spectrometer. The measurement conditions are shown in Table 3 shows the ICP-MS parameters employed for the analyses and Table 4 shows the main analytical features obtained for the measured mass of each considered isotope, including the instrumental detection and quantification limits (LOD and LOQ), and the coefficient of determination (R²) of the corresponding calibration lines.

Instrumental conditions		Sample parameters	
Vacuum pressure (Pa)	5.8x10 ⁻⁶	Carrier Flow (L/min)	0.35
Flow of plasma gas Ar (L/min)	1.0	Work mode	HMI-8
RF power (W)	1550	Integration parameters	
RF coupling (V)	1.80	Acquisition mode	Spectrum
Sampling depth (mm)	8.0	Per peak points	1
Nebulizer pump (rps)	0.3	Replicates	3
Lens		Per replicas' readings	100
Extraction lens 1 (V)	0	Dwell time UMA (s)	0.5-1
Extraction lens 2 (V)	-200		
Omega lens (V)	9.2		
Omega lens deviation (V)	-120		

Table 3. ICP-MS parameters employed for the mineral analysis.

Element	Mass	LOD	LOQ	R ²
La	139	0.0009	0.003	0.9994
Ce	140	0.0009	0.003	0.9993
Pr	141	0.0003	0.0010	0.9991
Nd	142	0.002	0.007	0.9994
Sm	152	0.0002	0.0007	0.9992

Eu	151	0.0005	0.0017	0.9998
Gd	158	0.004	0.015	0.9993
Tb	159	0.00011	0.0004	0.9989
Dy	162	0.0007	0.002	0.9991
Ho	165	7.4E-05	0.0002	0.9991
Er	166	0.0003	0.0011	0.9989
Tm	169	0.00017	0.0006	0.9986
Yb	172	0.0006	0.002	0.9989
Lu	175	0.00015	0.0005	0.9990
Sc	45	0.02	0.08	0.9999
Y	89	0.0013	0.004	0.9999
Ba	138	0.002	0.008	0.9992
Bi	209	0.006	0.018	0.9991
Cd	111	0.003	0.011	0.9998
Cr	52	0.4	1.3	0.9999
Co	59	0.008	0.03	0.9998
Cu	63	0.009	0.03	0.9998
Pb	207	0.12	0.4	0.9993
Li	7	0.0016	0.005	0.9996
Mn	55	0.17	0.58	0.9998
Mo	95	0.012	0.04	0.9998
Ni	60	0.009	0.03	0.9990
Sr	88	0.011	0.04	0.9996
Tl	205	0.0018	0.006	0.9988
V	51	1.2	4	0.9998
Zn	64	0.2	0.8	0.9994
Rh*	103			

Note: Mass, detection limits (LOD), quantification limits (LOQ) and R^2 of 31 elements detected in the studied samples being LOD and LOQ expressed as $\mu\text{g/g}$ for all elements.

* Internal standard.

Table 4. Analytical features of mineral elements determination in mortar samples by ICP-MS.

2.4 Statistical data processing

The PCA models were built by using data obtained from a total of forty-two analysed samples and the set of data obtained from samples dated to the Roman Imperial period and the Islamic occupation phase obtained previously by Gallelo et al. [26]. Major and minor elements, trace elements including REE were employed as variables. This technique was used to explore large geochemical datasets by reducing the number of variables and providing a deep insight into the structure of the variance of the dataset. Data were processed through mean center and autoscale prior to modelling and the obtained model was cross validated through leave one out method.

The PLS-DA model was built employing twenty-two samples as calibration set: nine samples from the Circus (Los Huertos Street excavation) and samples studied by Gallelo et al. [26] including five from the Roman Theatre, TR, built during the Roman Imperial Period and eight samples from Islamic masonries (two samples from the Imperial Forum Tabernae, TFI, four samples from the first part of the Islamic Wall, MI, and two from the Torre Central Estudiantes, TCE). Five of these samples (C07, C08, C10b and two TR samples) were randomly selected as internal validation set to test the model (data not shown). Sixteen variables were employed (REE, Y and Sc). Finally, thirty-seven mortar samples dated back to Roman Imperial period, Islamic occupation phase and also some uncertain samples were included as test set to predict their class. Data were pre-processed employing mean centering and autoscale and “leave one out” cross validation method was employed for the evaluation of results. Data analysis was carried out using the PLS Toolbox 6.5 for Eigenvector Research Inc., Wenatchee, WA, USA) running in Matlab R2014b from Mathworks Inc., (Natick, MA, USA).

3. Results and discussion

3.1 Geochemical results

The analytical results of major and minor elements as well as trace elements and REE data are reported in the supplementary materials (Annex 1 and Annex 2).

Lime mortar samples from the Railroad Station and from the Circus area buildings have comparable amounts of Al_2O_3 and SiO_2 which range from 0.44 to 1.05wt%, and from 11.30 to 26.97wt% respectively, except for samples RS25A (Al_2O_3 : 3.02wt%; SiO_2 : 34.86wt%) and RS11C (Al_2O_3 : 5.17wt%; SiO_2 : 36.72wt%), which are both from the Railroad Station and show particularly high values of these two chemical components. On the contrary, Railroad Station’s samples have lower concentration of CaO (30 ± 4 wt%) and higher one of Fe (1.3 ± 0.1 wt%) and Ti (0.12 ± 0.01 wt%) than Los Huertos Street mortars (CaO: 40 ± 3 wt%; Fe: 0.99 ± 0.14 wt%; Ti: 0.08 ± 0.02 wt%). The samples of earth mortars from Room 1 (R1a, R1b, R1c) and Room 2 (R2a, R2b, R2d) show the lowest values of CaO (15.3 ± 1.1 wt%) and the highest ones of Al_2O_3 (10.9 ± 1.1 wt%), SiO_2 (37.8 ± 1.7 wt%), Fe (2.4 ± 0.3 wt%) and Ti (0.25 ± 0.02 wt%).

The lime mortar samples from Los Huertos Street and from the Railroad Station have comparable concentrations in almost all the measured trace elements. In particular, it is worth noticing that the two groups of samples show similar REE total amounts ($\sum\text{REE}$) (Los Huertos Street: 20 ± 4 $\mu\text{g/g}$; Railroad Station: 20 ± 2 $\mu\text{g/g}$) and Sc concentrations (Los Huertos Street: 1.1 ± 0.3 $\mu\text{g/g}$; Railroad

Station: $1.1 \pm 0.1 \mu\text{g/g}$), while samples from Los Huertos Street have a slightly higher concentration of Y than the ones from the Railroad Station excavation ($4.1 \pm 0.8 \mu\text{g/g}$ and $3.5 \pm 0.4 \mu\text{g/g}$ respectively). Concerning the earth mortars from Room 1 and Room 2, they have comparable contents of REE, Y and Sc. REE total amounts go from $37 \mu\text{g/g}$ to $53 \mu\text{g/g}$, and Y and Sc range from $5 \mu\text{g/g}$ to $10 \mu\text{g/g}$, and from $2 \mu\text{g/g}$ to $3 \mu\text{g/g}$ respectively.

To give a deep insight in the mechanisms that influence the amount of REE in the mortar samples, it is interesting to look at the correlation among the REE and analysed elements for each group of mortars. Table 5 shows the Pearson correlation coefficient (ρ) considering as variables REE total amounts and the indicated elements for each group of mortars considered separately (see supplementary materials Annex 2). Only statistically significant data were taken into account given $p = .05$. REE concentration of Los Huertos Street lime mortar samples show positive correlations, as well as for Sc ($\rho = 0.75$), which has a chemical behaviour similar to lanthanides, with Al_2O_3 ($\rho = 0.57$), Tl ($\rho = 0.50$), Co ($\rho = 0.51$), Cr ($\rho = 0.55$) and negative correlations with Ca ($\rho = -0.43$) and Sr ($\rho = -0.41$), which suggests that the major contribution to the amount of REE comes from limestone clay impurities or from aluminosilicates and silicate rock clasts present in the aggregate fraction [27]. Concerning the lime mortar samples from the Railroad Station excavation, significant correlations were not detected among major elements and REE. However, significant positive correlations were found with Y ($\rho = 0.59$), Co ($\rho = 0.51$) and V ($\rho = 0.56$). As regards earth mortars (R1 and R2) from Los Huertos Street, in this case REE total amount has high positive correlations with most of the trace elements (for Bi, Tl, Ba, Mo, Sr, Zn, Cu, Ni, Co, Mn, Cr, V, Sc and Li, ρ goes from 0.71 to 0.97) and, among the major elements, with Fe ($\rho = 0.76$) and Ti ($\rho = 0.81$), suggesting that the major contribution in lanthanides comes probably from clay fraction, other silicate minerals and silicate rock clasts.

Element	Railroad Station	Los Huertos Street	
	Lime mortars	Lime mortars	Earth mortars
Al_2O_3	-0.21	0.57	0.61
SiO_2	-0.45	0.21	-0.23
CaO	-0.08	-0.43	-0.7
Fe	0.18	0.3	0.76
Ti	-0.1	0.28	0.81
^{209}Bi	-0.21	0.23	0.95
^{207}Pb	0.41	0.03	-0.09
^{205}Tl	-0.42	0.5	0.97

¹³⁸ Ba	0.15	0.06	0.85
¹¹¹ Cd	0.01	0.02	0.58
⁹⁵ Mo	-0.04	-0.29	0.95
⁸⁹ Y	0.59	0.25	0.6
⁸⁸ Sr	0	-0.41	0.76
⁶⁴ Zn	0.37	-0.24	0.93
⁶³ Cu	-0.19	-0.22	0.9
⁶⁰ Ni	0.32	0.15	0.89
⁵⁹ Co	0.51	0.51	0.96
⁵⁵ Mn	0.23	-0.06	0.94
⁵² Cr	0.48	0.55	0.94
⁵¹ V	0.56	0.24	0.88
⁴⁵ Sc	0.49	0.75	0.71
⁷ Li	0.19	0.35	0.82

Note: Statistically significant values of ρ are written with bold character ($p = .05$)

Table 5 - Pearson correlation coefficient (ρ) between \sum REE and each measured element for the three groups of mortar.

3.2 Chemometrics for construction phases discrimination

The identification of the construction phases of the buildings was conducted by comparing the mortars from the Railroad Station and Los Huertos Street to the ones of Sagunto Castle published by Gallelo et al. [26] and whose construction periods were retraced in the same work. In particular, this previous study was focused on REE concentrations, due to their proved effectiveness in archaeometric studies about provenance and raw materials of lithic and lithoid archaeological artifacts [28-30].

To compare the samples from the excavations to the Imperial and Islamic mortars from Sagunto Castle [26], principal component analysis (PCA) was carried using all variables (i.e. elements) (Figure 2). Figure 2b shows the contribution of the variables in PC1 (55.00% of samples' variance) and PC2 (13.37% of samples' variance). Figure 2a shows the position of each sample in a diagram where x-axis corresponds to PC1 coordinates and y-axis to PC2. Most of the samples of Los Huertos Street and all Railroad Station are grouped together in the left side of the plot while the samples dated back both to Imperial Roman period and Islamic period from de Castle are grouped in the right part of the graph. The samples of earth mortars from Room1 (R1a, R1b, R1c) and

Room2 (R2a, R2b, R2d) of Los Huertos Street are plotted in the upper right side of the diagram, at the limit of the confidence interval or out of it.

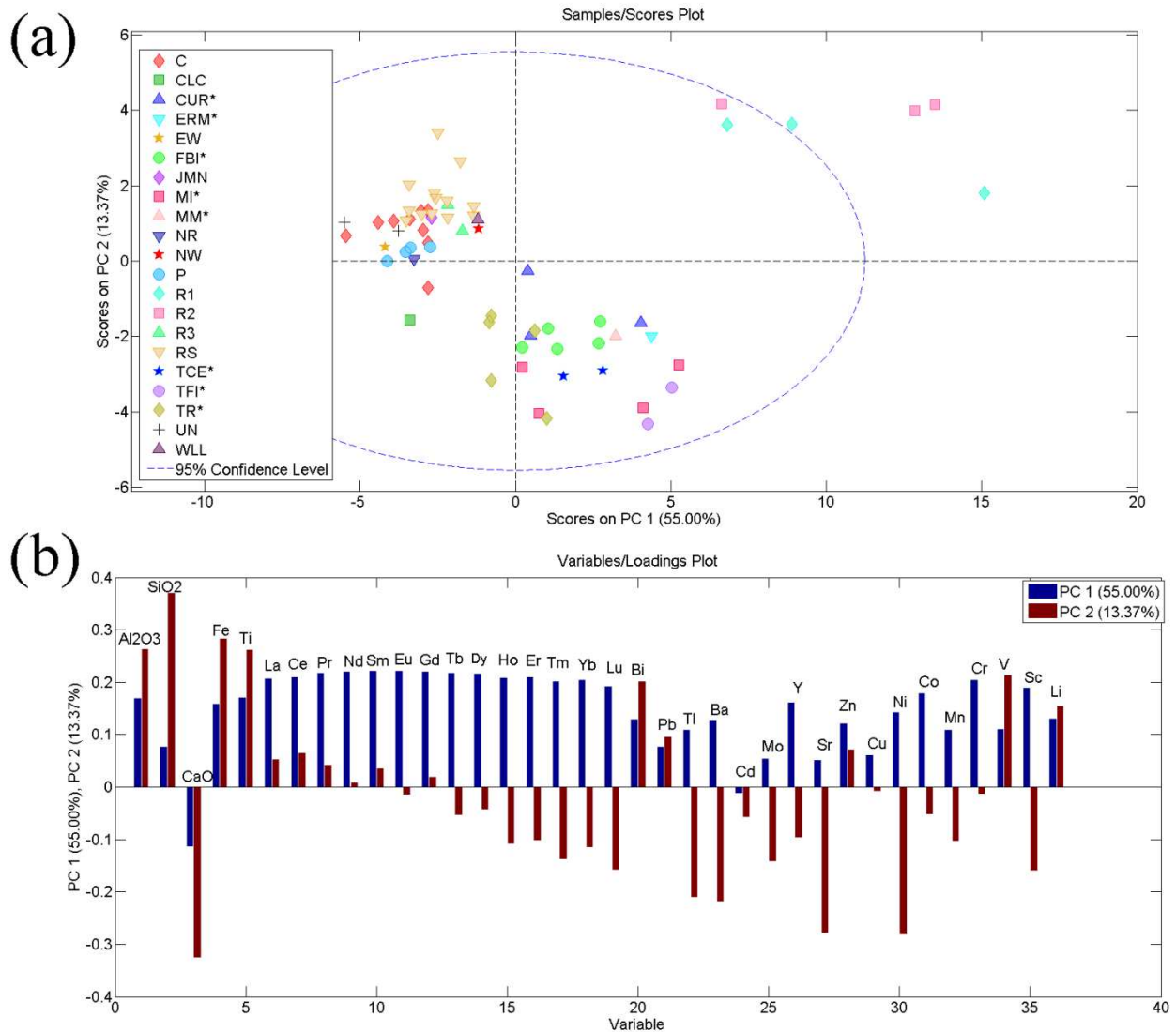


Figure 2. PCA study employing all the measured element concentrations. Scores (a) and loadings (b) plot of PC1 and PC2. The samples marked with a star (*) are related to Sagunto Castle buildings [17]. Legend: ERM = Hermitage, FBI = Imperial Basilica, FRW = Wester Republican Forum, MI = Islamic Wall (1st section), MII = Islamic Wall (2nd section), MM = Modern Wall, SMR = Republican Wall, TCE = Torre Central Estudiantes, TFI = Imperial Forum tabernae, TMP = Republican Diana’s Temple, TR = Roman Theatre.

In Figure 3b the contribution of the REE employed as variables are shown. PC1 explains the 88.34% of the data variance and PC2 explains the 5.40%. Lime mortar samples from Los Huertos Street and all Railroad Station excavations are grouped with the mortars from the Roman Theatre (TR) (Figure 3a), suggesting the dating to the Roman Imperial period also confirmed by the archaeological data while the earth mortar samples are plotted in PC1 and PC2 positive direction. Finally, a separation between mortars from Imperial Period (PC1 negative direction), and mortars from the Islamic Period, located in the left lower area of PC can be appreciated.

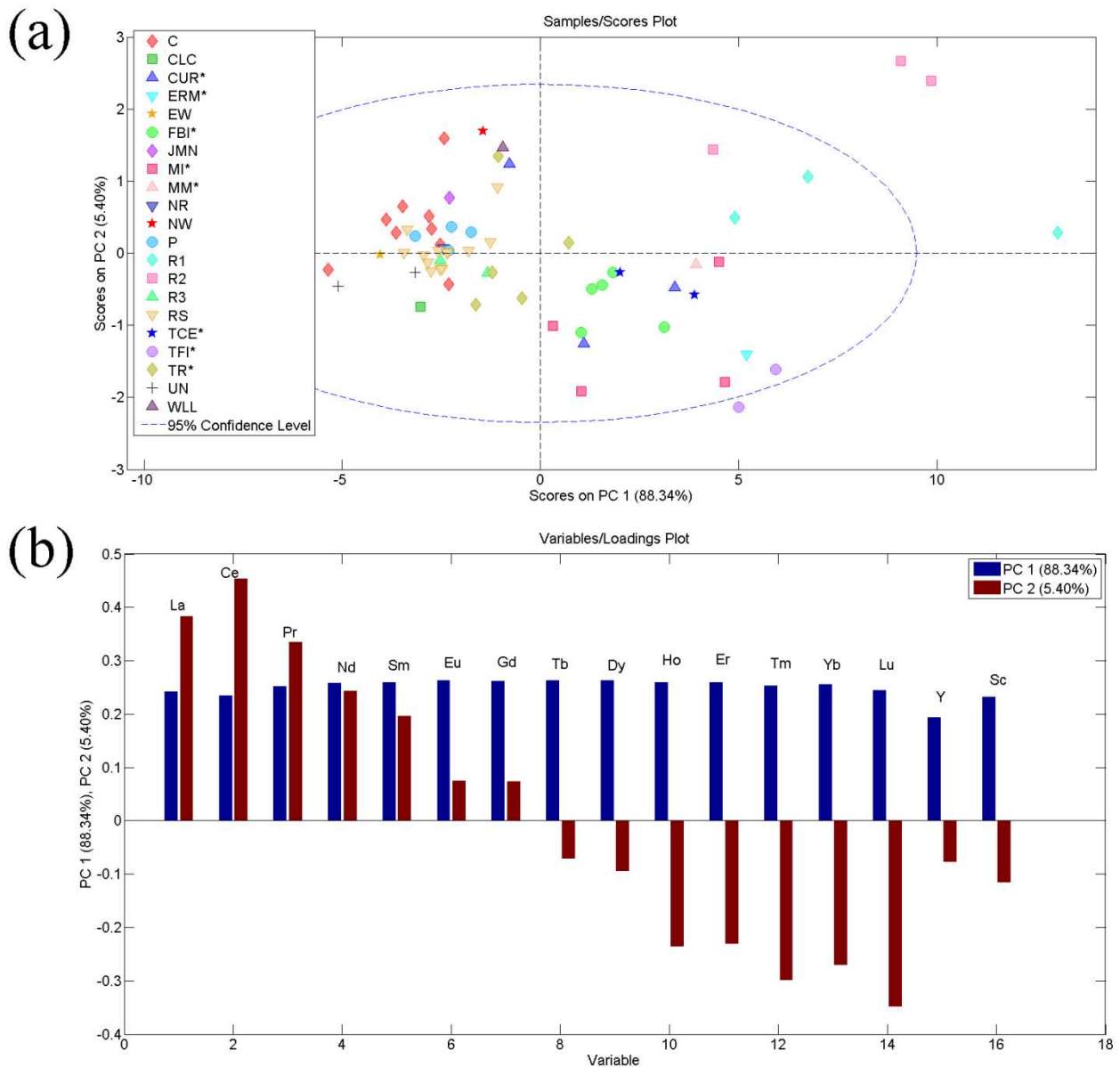


Figure. 3. PCA study employing only REE, Y and Sc concentrations. Scores (a) and loadings (b) plot of PC1 and PC2. The legend for Sagunto Castle samples' classes (*) is indicated in Figure. 2 caption.

Since the discrimination of lime mortars from Roman Imperial and Islamic buildings seems to be the most problematic issue, principal least squares discriminant analysis (PLS-DA) was employed to build a statistical model to classify uncertain samples. The calibration set and validation set were established by using samples from buildings and masonries that were previously classified by Gallelo et al. [26] and by archaeological data as Roman Imperial (C and TR) or as Islamic (MII, TFI and TCE) (Figure 4a). Figure 4b shows the contribution of each variable to the model. As it can be seen, the model clearly separates between mortars of the two different construction phases. Subsequently, the model was applied to a test set composed by uncertain Roman Imperial period or Islamic mortars (Figure. 4a). The PLS-DA results confirmed that all the mortars from Los Huertos Street and Railroad Station are classified as Roman Imperial period materials except for sample WLL that has been classified as Islamic, which is coherent with the archaeological data that confirm the occupation of the area during the Islamic phase. As observed, on the contrary of Los Huertos Street, in Railroad Station samples major elements are not correlated to REE (Table 5), this could suggests that the mortars were made in a different way or this is an indicator of recycling building materials and, according to the archaeological wall stratigraphy interpretation, the Railroad Station structures could be dated after the Imperial period. Thus, maybe they were built during the Late Roman Age. On the other hand, one mortar sample from the Basilica of the Imperial Forum (FBI SC) and one mortar from the Curia testify the presence of both Roman Imperial masonries and Islamic reworks in Roman buildings due to the heavy reemployment of the Imperial Forum area during the Islamic occupation [26].

The use of REE, Y and Sc as variables has shown their high effectiveness in the discrimination of different kind of mortars to retrace the construction history of archaeological sites and monuments. The comparison among mortars coming from different archaeological excavations and monuments of the same geographical area seems to be a very viable method to solve chronological issues related to the construction phases of both structures unearthed during archaeological excavations, and historical complexes.

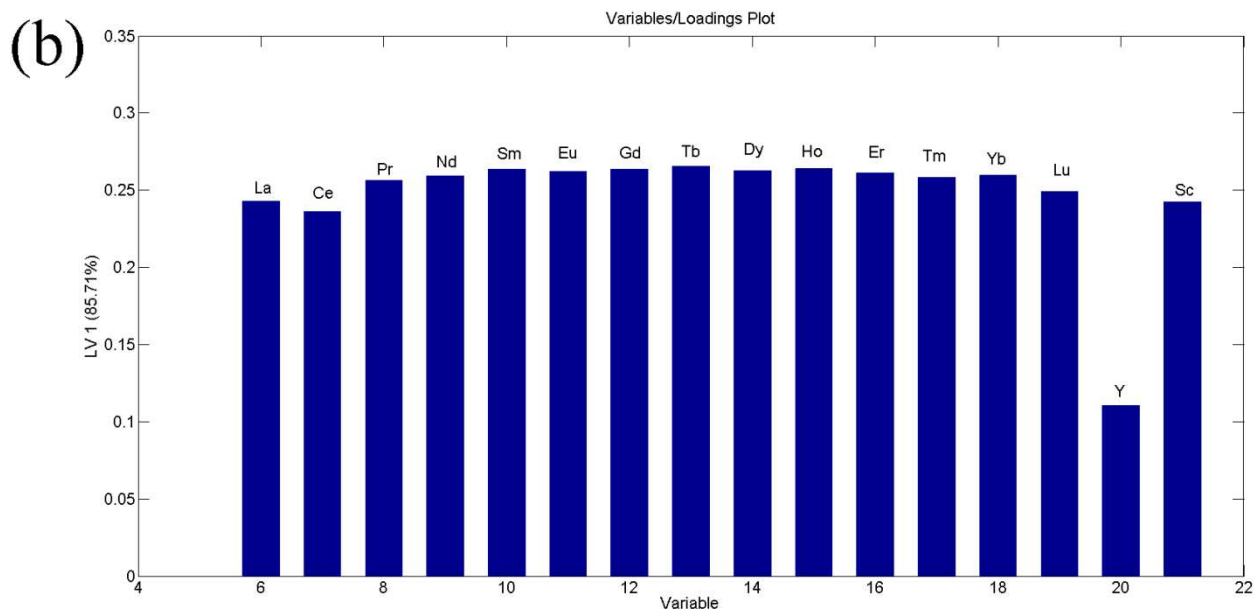
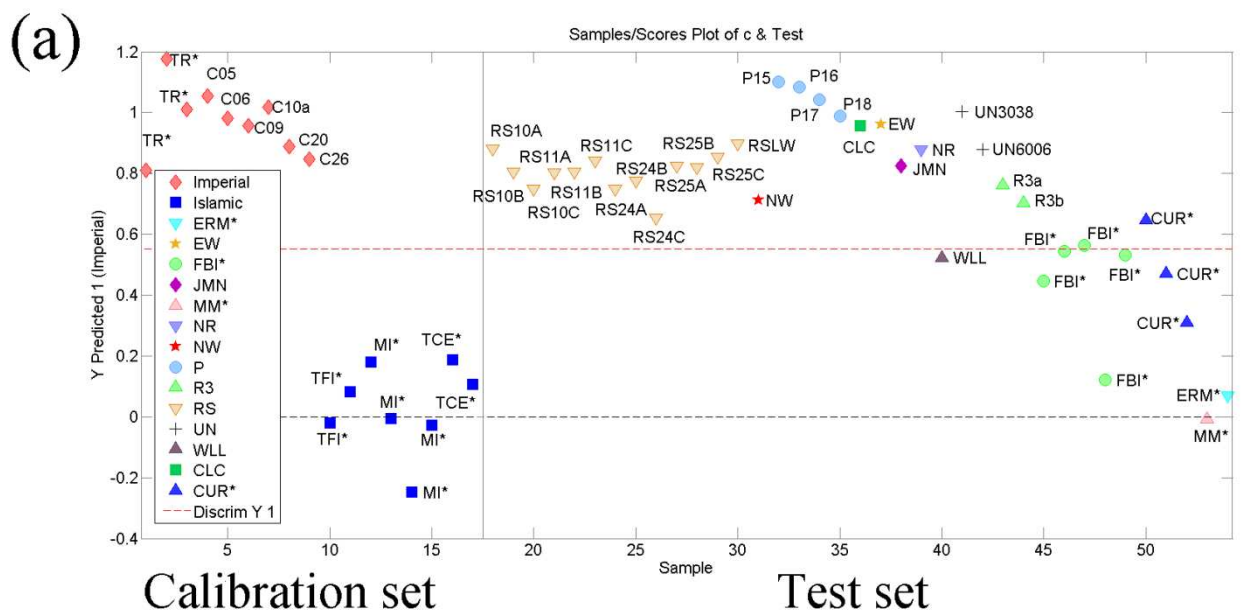


Figure 4. PLS-DA results. (a) Calibration set and predicted class membership of the other samples at the top. (b) VIP scores of the PLS-DA model at the bottom. The legend for Sagunto Castle classes (*) is indicated in Figure. 2 caption.

4. Conclusion

The study of the historic mortars from two archaeological excavations (*i.e.*, Los Huertos Street and Railroad Station) located in the city of Sagunto permitted to solve issues that had remained unanswered in the previous studies on these building materials.

The use of multivariate statistics employing REE as variables allowed to classify the lime mortars belonging to the Imperial Roman period, in line with the archaeological data, however the case of the Railroad Station structure needs deeper studies to confirm the chronology as Imperial Roman or Late Roman Age. Also, it was possible to establish the chronological phase of some masonries of Sagunto Castle whose period of construction was uncertain and that can be attributed to the phase of the Islamic occupation or to the Roman Imperial period. PLS-DA model was helpful to discriminate among mortars of uncertain attribution and that can be useful for possible future studies in Sagunto area.

The correlation among REE and major/minor and trace elements are showing that the mechanisms that allowed REE to be discriminating parameters between Sagunto mortars belonging to different periods are related to chemical weathering processes involving limestone clay impurities, aluminosilicates and silicate rock clasts present in the aggregate fraction. Therefore, further works need to be developed focusing in the understanding of the chemical processes that are influencing the REE distributions.

Summarizing, the present study has confirmed the effectiveness of REE data in building materials as markers of different construction phases and has proved the usefulness of the application of ancient mortar analysis on a geographical scale wider than a single archaeological excavation or monuments.

Supplementary materials

Annex I. Concentrations of the measured major and minor elements obtained by pED-XRF.

Annex II. Trace elements and REE results obtained by ICP-MS.

Conflicts of Interest

The authors declare that there is no conflict of interest with any institution or funding body.

Data Availability

The data used to support the findings of this study are included within the article the supplementary information file.

Funding Statement

Authors acknowledge the financial support of Generalitat Valenciana (PROMETEO project II/2014/077) and Ministerio de Economía y Competitividad-Feder (Project CTQ 2014-52841-P and Project CTQ 2012-38635).

Gianni Gallelo acknowledges the financial support of the European Commission (Project H2020-MSCA-IF-2015-704709-MATRIX).

Acknowledgements

The authors acknowledge also the analytical support of the Central Service for Experimental Research (SCSIE) of the University of Valencia, and of Dr. Laredo Ortíz and Dr. Soriano Vega.

The authors would like to thanks all the archaeologists working in Railroad Station and Los Huertos Street excavations, which have contributed to the realization of this study and especially the Archaeologist at the Sagunto's Council Ms. Carla Flors.

References

- [1] A. Moropoulou, A. Bakolas, and K. Bisbikou, "Investigation of the technology of historic mortars. *Journal of Cultural Heritage*," vol. 1, no. 1, pp. 45–58, 2000.
- [2] M. Theodoridou, I. Ioannou, and M. Philokyrou, "New evidence of early use of artificial pozzolanic material in mortars," *Journal of Archaeological Science*, vol. 40, no. 8, pp. 3263–3269, 2013.
- [3] M. Franzini, L. Leoni, M. Lezzerini, F. Sartori, "The mortar of the "Leaning Tower" of Pisa: the product of a medieval technique for preparing high-strength mortars", *Eur. J. Mineral.*, **12**, 1151-1163, 2000.

- [4] F. Marra, A. Danti, and M. Gaeta, "The volcanic aggregate of ancient Roman mortars from the Capitoline Hill: Petrographic criteria for identification of Rome's "pozzolans" and historical implications," *Journal of Volcanology and Geothermal Research*, vol. 308, pp. 113–126, 2015.
- [5] M. Lezzerini, M. Ramacciotti, F. Cantini, B. Fatighenti, F. Antonelli, E. Pecchioni, F. Fratini, E. Cantisani, and M. Giamello, "Archaeometric study of natural hydraulic mortars: the case of the Late Roman Villa dell'Oratorio (Florence, Italy)", *Archaeological and Anthropological Science*, vol. 9, no. 4, pp. 603–615, 2017.
- [6] M. Lezzerini, S. Pagnotta, S. Raneri, S. Legnaioli, V. Palleschi, S. Columbu, N.F. Neri, P. Mazzoleni, "Examining the reactivity of volcanic ash in ancient mortars by using a micro-chemical approach", *Mediterranean Archaeology and Archaeometry*, in press.
- [7] S. Columbu, A.M. Garau, "Mineralogical, petrographic and chemical analysis of geomaterials used in the mortars of Roman Nora theatre (south Sardinia, Italy)", *Ital. J. Geosci.*, vol. 136, no. 2, pp. 238-262, 2017.
- [8] S. Columbu, "Petrographic and geochemical investigations on the volcanic rocks used in the Punic-Roman archaeological site of Nora (Sardinia, Italy)", *Earth Environmental Sciences*, in press.
- [9] J. Elsen, A. Brutsaert, M. Deckers, and R. Brulet, "Microscopical study of ancient mortars from Tournai (Belgium)," *Materials Characterization*, vol. 53, no. 2–4, pp. 289–294, 2004.
- [10] C. Borges, A. Santos Silva, and R. Veiga, "Durability of ancient lime mortars in humid environment," *Construction and Building Materials*, vol. 66, pp. 606–620, 2014.
- [11] M. Lezzerini, S. Legnaioli, G. Lorenzetti, V. Palleschi, and M. Tamponi, "Characterization of historical mortars from the bell tower of St. Nicholas church (Pisa, Italy)," *Construction and Building Materials*, vol. 69, pp. 203–214, 2014.
- [12] D. Miriello, F. Antonelli, C. Apollaro, A. Bloise, N. Bruno, E. Catalano, S. Columbu, G.M. Crisci, R. De Luca, M. Lezzerini, S. Mancuso, A. La Marca, "New data about the ancient mortars from the archaeological site of Kyme (Turkey): compositional characterization", *Per. Mineral.* vol. 84, pp. 497-517, 2015.
- [13] S. Columbu, F. Sitzia, G. Ennas, "The ancient pozzolanic mortars and concretes of Heliocaminus baths in Hadrian's Villa (Tivoli, Italy)", *Archaeol Anthropol Sci.*, vol. 9, pp. 523-553, 2017.

- [14] F. Carò, M.P. Riccardi, and M.T. Mazzilli Savini, "Characterization of plasters and mortars as a tool in archaeological studies: the case of Lardirago Castle in Pavia, Northern Italy," *Archaeometry*, vol. 50, no. 1, pp. 85–100, 2008.
- [15] E. Arizio, R. Piazza, W.R.L. Cairns, L. Apollonia, and A. Botteon, "Statistical analysis on ancient mortars: a case study of the Balivi Tower in Aosta (Italy)," *Construction and Building Materials*, vol. 47, pp. 1309–1316, 2013.
- [16] C. Corti, L. Ramazzi, R. Bugini, A. Sansonetti, M. Biraghi, L. Castelletti, I. Nobile, and C. Orsenigo, "Thermal analysis and archaeological chronology: The ancient mortars of the site of Baradello (Como, Italy)," *Thermochimica Acta*, vol. 572, pp. 71–84, 2013.
- [17] F. Marra, E. D'Ambrosio, M. Gaeta, and M. Mattei, "Petrochemical identification and insights on chronological employment of the volcanic aggregates used in ancient Roman mortars," *Archaeometry*, vol. 58, no. 2, pp. 177–200, 2016.
- [18] A.M. Conte, L. Corda, D. Esposito, and E. Giorgi, "Characterization of mortars from the medieval Abbey of Cerrate (southern Italy)," *Journal of Archaeological Science: Reports*, vol. 12, pp. 463–479, 2017.
- [19] S. Columbu, "Provenance and alteration of pyroclastic rocks from the Romanesque Churches of Logudoro (north Sardinia, Italy) using a petrographic and geochemical statistical approach", *Applied Physics A, Materials Science and Processing*, vol. 123, no. 3, 165, 2017.
- [20] S. Columbu, F. Sitzia, G. Verdiani, "Contribution of petrophysical analysis and 3D digital survey in the archaeometric investigations of the Emperor Hadrian's Baths (Tivoli, Italy)", *Rend. Fis. Acc. Lincei*, No. 26, pp. 455–474, 2015.
- [21] I. Papayianni and M. Stefanidou, "Durability aspects of ancient mortars of the archaeological site of Olynthos," *Journal of Cultural Heritage*, vol. 8, no. 2, pp. 193–196, 2007.
- [22] I. Papayianni, V. Pachta, and M. Stefanidou, "Analysis of ancient mortars and design of compatible repair mortars: The case study of Odeion of the archaeological site of Dion," *Construction and Building Materials*, vol. 40, pp. 84–92, 2013.
- [23] M. Lezzerini, F. Antonelli, S. Columbu, R. Gadducci, A. Marradi, D. Miriello, L. Parodi, L. Secchiari, A. Lazzeri, "The documentation and conservation of the Cultural Heritage: 3D Laser Scanning and Gis Techniques for thematic mapping of the Stonework of the Façade of St. Nicholas Church (Pisa, Italy)", *International Journal of Architectural Heritage: Conservation, Analysis, and Restoration*, vol. 10, pp. 9-19, 2016.

- [24] S. Columbu, M. Palomba, F. Sitzia, M.R. Murgia, "Geochemical and mineral-petrographic studies of stones and mortars from the Romanesque Saccargia Basilica (Sardinia, Italy) to define their origin and alteration", *Italian Journal of Geosciences*, DOI: 10.3301/IJG.2018.04
- [25] P.P. Ripollés, *Opulentissima Saguntum*, Bancaja, Sagunto, Spain, 2004.
- [26] G. Gallelo, M. Ramacciotti, M. Lezzerini, E. Hernandez, M. Calvo, A. Morales, A. Pastor, and M. de la Guardia, "Indirect chronology method employing rare earth elements to identify Sagunto Castle mortar construction periods," *Microchemical Journal*, vol. 132, pp. 251–261, 2017
- [27] H. R. Rollins, "Using Geochemical Data: Evaluation, Presentation, Interpretation," Pearson Education Limited, 1993.
- [28] G. Gallelo, T. Orozco, A. Pastor, M. De la Guardia, and J. Bernabeu, "Regional provenance of dolerite prehistoric objects through mineral analysis," *Microchemical Journal*, vol. 124, pp. 167–174, 2016.
- [29] A. Hein, P.M. Day, P.S. Quinn, and V. Kilikoglou, "The geochemical diversity of Neogene clay deposits in crete and its implications for provenance studies of Minoan pottery," *Archaeometry*, vol. 46, no. 3, pp. 357–384, 2004.
- [30] S. Cagno, M. Mendera, T. Jeffries, and K. Janssens, "Raw materials for post-medieval Tuscan glassmaking: new insight from LA-ICP-MS analyses," *Journal of Archaeological Science*, vol. 37, no. 12, pp. 3030–3036, 2010.