



## Edinburgh Research Explorer

### The complex genetics of gait speed

**Citation for published version:**

Ben-Avraham, D, Karasik, D, Verghese, J, Lunetta, KL, Smith, JA, Eicher, JD, Vered, R, Deelen, J, Arnold, AM, Buchman, AS, Tanaka, T, Faul, JD, Nethander, M, Fornage, M, Adams, HH, Matteini, AM, Callisaya, ML, Smith, AV, Yu, L, De Jager, PL, Evans, DA, Gudnason, V, Hofman, A, Pattie, A, Corley, J, Launer, LJ, Knopman, DS, Parimi, N, Turner, ST, Bandinelli, S, Beekman, M, Gutman, D, Sharvit, L, Mooijaart, SP, Liewald, DC, Houwing-Duistermaat, JJ, Ohlsson, C, Moed, M, Verlinden, VJ, Mellström, D, van der Geest, JN, Karlsson, M, Hernandez, D, McWhirter, R, Liu, Y, Thomson, R, Tranah, GJ, Uitterlinden, AG, Weir, DR, Zhao, W, Starr, JM, Johnson, AD, Ikram, MA, Bennett, DA, Cummings, SR, Deary, IJ, Harris, TB, Kardina, SLR, Mosley, TH, Srikanth, VK, Windham, BG, Newman, AB, Walston, JD, Davies, G, Evans, DS, Slagboom, EP, Ferrucci, L, Kiel, DP, Murabito, JM & Atzmon, G 2017, 'The complex genetics of gait speed: Genome-wide meta-analysis approach' *Aging*, vol 9, no. 1, pp. 209-246. DOI: 10.18632/aging.101151

**Digital Object Identifier (DOI):**

[10.18632/aging.101151](https://doi.org/10.18632/aging.101151)

**Link:**

[Link to publication record in Edinburgh Research Explorer](#)

**Document Version:**

Publisher's PDF, also known as Version of record

**Published In:**

*Aging*

**General rights**

Copyright for the publications made accessible via the Edinburgh Research Explorer is retained by the author(s) and / or other copyright owners and it is a condition of accessing these publications that users recognise and abide by the legal requirements associated with these rights.

**Take down policy**

The University of Edinburgh has made every reasonable effort to ensure that Edinburgh Research Explorer content complies with UK legislation. If you believe that the public display of this file breaches copyright please contact [openaccess@ed.ac.uk](mailto:openaccess@ed.ac.uk) providing details, and we will remove access to the work immediately and investigate your claim.



## The complex genetics of gait speed: genome-wide meta-analysis approach

Dan Ben-Avraham<sup>1,\*</sup>, David Karasik<sup>2,3,\*</sup>, Joe Verghese<sup>4,\*</sup>, Kathryn L. Lunetta<sup>5,6</sup>, Jennifer A. Smith<sup>7</sup>, John D. Eicher<sup>5,8</sup>, Rotem Vered<sup>9</sup>, Joris Deelen<sup>10,11</sup>, Alice M. Arnold<sup>12</sup>, Aron S. Buchman<sup>13</sup>, Toshiko Tanaka<sup>14</sup>, Jessica D. Faul<sup>15</sup>, Maria Nethander<sup>16</sup>, Myriam Fornage<sup>17</sup>, Hieab H. Adams<sup>18,19</sup>, Amy M. Matteini<sup>20</sup>, Michele L. Callisaya<sup>21,22</sup>, Albert V. Smith<sup>23</sup>, Lei Yu<sup>13</sup>, Philip L. De Jager<sup>24</sup>, Denis A. Evans<sup>25</sup>, Vilmundur Gudnason<sup>23</sup>, Albert Hofman<sup>18,26</sup>, Alison Pattie<sup>27</sup>, Janie Corley<sup>27</sup>, Lenore J. Launer<sup>28</sup>, Davis S. Knopman<sup>29</sup>, Neeta Parimi<sup>30</sup>, Stephen T. Turner<sup>31</sup>, Stefania Bandinelli<sup>32</sup>, Marian Beekman<sup>10</sup>, Danielle Gutman<sup>48</sup>, Lital Sharvit<sup>48</sup>, Simon P. Mooijaart<sup>33</sup>, David C. Liewald<sup>34</sup>, Jeanine J. Houwing-Duistermaat<sup>35</sup>, Claes Ohlsson<sup>36</sup>, Matthijs Moed<sup>10</sup>, Vincent J. Verlinden<sup>18</sup>, Dan Mellström<sup>36</sup>, Jos N. van der Geest<sup>37</sup>, Magnus Karlsson<sup>38</sup>, Dena Hernandez<sup>39</sup>, Rebekah McWhirter<sup>22</sup>, Yongmei Liu<sup>40</sup>, Russell Thomson<sup>22,41</sup>, Gregory J. Tranah<sup>30</sup>, Andre G. Uitterlinden<sup>42</sup>, David R. Weir<sup>15</sup>, Wei Zhao<sup>7</sup>, John M. Starr<sup>34,43</sup>, Andrew D. Johnson<sup>5,8</sup>, M. Arfan Ikram<sup>18,19</sup>, David A. Bennett<sup>13</sup>, Steven R. Cummings<sup>30</sup>, Ian J. Deary<sup>27,34</sup>, Tamara B. Harris<sup>28</sup>, Sharon L. R. Kardia<sup>7</sup>, Thomas H. Mosley<sup>44</sup>, Velandai K. Srikanth<sup>21,22</sup>, Beverly G. Windham<sup>44</sup>, Ann B. Newman<sup>45</sup>, Jeremy D. Walston<sup>20</sup>, Gail Davies<sup>27,34</sup>, Daniel S. Evans<sup>30</sup>, Eline P. Slagboom<sup>10</sup>, Luigi Ferrucci<sup>14</sup>, Douglas P. Kiel<sup>2,46,#</sup>, Joanne M. Murabito<sup>5,47,#</sup>, Gil Atzmon<sup>1,48,#</sup>

<sup>1</sup>Department of Medicine and Genetics Albert Einstein College of Medicine, Bronx, NY 10461, USA

<sup>2</sup>Institute for Aging Research, Hebrew SeniorLife, Department of Medicine, Beth Israel Deaconess Medical Center and Harvard Medical School, Boston, MA 02131, USA

<sup>3</sup>Faculty of Medicine in the Galilee, Bar-Ilan University, Safed, Israel

<sup>4</sup>Integrated Divisions of Cognitive & Motor Aging (Neurology) and Geriatrics (Medicine), Montefiore-Einstein Center for the Aging Brain, Albert Einstein College of Medicine, Bronx, NY 10461, USA

<sup>5</sup>The National Heart Lung and Blood Institute's Framingham Heart Study, Framingham, MA 01702, USA

<sup>6</sup>Department of Biostatistics, Boston University School of Public Health, Boston, MA 02118, USA

<sup>7</sup>Department of Epidemiology, School of Public Health, University of Michigan, Ann Arbor, MI 48109, USA

<sup>8</sup>Population Sciences Branch, National Heart Lung and Blood Institute, Framingham, MA 01702, USA

<sup>9</sup>Psychology Department, University of Haifa, Haifa, Israel

<sup>10</sup>Molecular Epidemiology, Leiden University Medical Center, Leiden, Netherlands

<sup>11</sup>Max Planck Institute for Biology of Ageing, Köln, Germany

<sup>12</sup>Department of Biostatistics, University of Washington, Seattle, WA 98115, USA

<sup>13</sup>Rush Alzheimer's Disease Center, Rush University Medical Center, Chicago, IL 60614, USA

<sup>14</sup>Translational Gerontology Branch, National Institute on Aging, Baltimore MD 21224, USA

<sup>15</sup>Survey Research Center, Institute for Social Research, University of Michigan, Ann Arbor, MI 48104, USA

<sup>16</sup>Bioinformatics Core Facility, The Sahlgrenska Academy, University of Gothenburg, Gothenburg, Sweden

<sup>17</sup>The University of Texas Health Science Center at Houston, Houston, TX 77030, USA

<sup>18</sup>Department of Epidemiology, Erasmus MC, Rotterdam, Netherlands

<sup>19</sup>Department of Radiology and Nuclear Medicine, Erasmus MC, Rotterdam, Netherlands

<sup>20</sup>Division of Geriatric Medicine, Johns Hopkins Medical Institutes, Baltimore, MD 21224, USA

<sup>21</sup>Medicine, Peninsula Health, Peninsula Clinical School, Central Clinical School, Frankston, Melbourne, Victoria, Australia

<sup>22</sup>Menzies Institute for Medical Research, University of Tasmania, Hobart, Tasmania, Australia

<sup>23</sup>Icelandic Heart Association, Faculty of Medicine, University of Iceland, 101 Reykjavik, Iceland

- <sup>24</sup>Broad Institute of Harvard and MIT, Cambridge, Harvard Medical School, Department of Neurology, Brigham and Women's Hospital, Boston, MA 02115, USA
- <sup>25</sup>Rush Institute for Healthy Aging and Department of Internal Medicine, Rush University Medical Center, Chicago, IL 60612, USA
- <sup>26</sup>Department of Epidemiology, Harvard T.H. Chan School of Public Health, Boston, MA 02115, USA
- <sup>27</sup>Department of Psychology, University of Edinburgh, Edinburgh, UK
- <sup>28</sup>Laboratory of Epidemiology and Population Sciences, National Institute on Aging, Intramural Research Program, National Institutes of Health, Bethesda, MD 20892, USA
- <sup>29</sup>Mayo Clinic, Rochester, MN 55905, USA
- <sup>30</sup>California Pacific Medical Center Research Institute, San Francisco, CA 94107, USA
- <sup>31</sup>Division of Nephrology and Hypertension, Mayo Clinic, Rochester, MN 55905, USA
- <sup>32</sup>Geriatric Unit, Azienda Sanitaria Firenze (ASF), Florence, Italy
- <sup>33</sup>Gerontology and Geriatrics, Leiden University Medical Center, Leiden, Netherland
- <sup>34</sup>Centre for Cognitive Ageing and Cognitive Epidemiology, University of Edinburgh, Edinburgh, UK
- <sup>35</sup>Genetical Statistics, Leiden University Medical Center, Leiden, Netherland. Department of Statistics, University of Leeds, Leeds, UK
- <sup>36</sup>Department of Internal Medicine and Clinical Nutrition, Institute of Medicine, Sahlgrenska, Academy, University of Gothenburg, Gothenburg, Sweden
- <sup>37</sup>Department of Neuroscience, Erasmus MC, Rotterdam, Netherlands
- <sup>38</sup>Clinical and Molecular Osteoporosis Research Unit, Department of Clinical Sciences, Lund University, Malmö, Sweden
- <sup>39</sup>Laboratory of Neurogenetics, National Institute on Aging, Bethesda, MD 20892, USA
- <sup>40</sup>Department of Epidemiology and Prevention, Division of Public Health Sciences, Wake Forest University, Winston-Salem, NC 27109, USA
- <sup>41</sup>School of Computing, Engineering and Mathematics, University of Western Sydney, Sydney, Australia
- <sup>42</sup>Department of Internal Medicine, Erasmus MC, and Netherlands Genomics Initiative (NGI)-sponsored Netherlands Consortium for Healthy Aging (NCHA), Rotterdam, The Netherlands
- <sup>43</sup>Alzheimer Scotland Dementia Research Centre, University of Edinburgh, Edinburgh, UK
- <sup>44</sup>University of Mississippi Medical Center, Jackson, MS 39216, USA
- <sup>45</sup>Department of Epidemiology, University of Pittsburgh, Pittsburgh, PA 15261, USA
- <sup>46</sup>Broad Institute of Harvard and MIT, Boston, MA 02131, USA
- <sup>47</sup>Section of General Internal Medicine, Department of Medicine, Boston University School of Medicine, Boston, MA 02118, USA
- <sup>48</sup>Department of Human Biology, Faculty of Natural Science, University of Haifa, Haifa, Israel
- \* Equal contribution
- # Co senior authors

**Correspondence to:** Joanne Murabito, Gil Atzmon; **email:** [murabito@bu.edu](mailto:murabito@bu.edu); [gil.atzmon@einstein.yu.edu](mailto:gil.atzmon@einstein.yu.edu)

**Keywords:** gait speed, meta-analysis, aging, GWAS

**Received:** July 25, 2016    **Accepted:** December 26, 2016    **Published:** January 10, 2017

**Correction:** This article has been corrected. See Aging. 2017; 9: Advance. <https://doi.org/10.18632/aging.101260>

## ABSTRACT

Emerging evidence suggests that the basis for variation in late-life mobility is attributable, in part, to genetic factors, which may become increasingly important with age. Our objective was to systematically assess the contribution of genetic variation to gait speed in older individuals. We conducted a meta-analysis of gait speed GWASs in 31,478 older adults from 17 cohorts of the CHARGE consortium, and validated our results in 2,588 older adults from 4 independent studies. We followed our initial discoveries with network and eQTL analysis of candidate signals in tissues. The meta-analysis resulted in a list of 536 suggestive genome wide significant SNPs in or near 69 genes. Further interrogation with Pathway Analysis placed gait speed as a polygenic complex trait in five major networks. Subsequent eQTL analysis revealed several SNPs significantly associated with the expression

of PRSS16, WDSUB1 and PTPRT, which in addition to the meta-analysis and pathway suggested that genetic effects on gait speed may occur through synaptic function and neuronal development pathways. No genome-wide significant signals for gait speed were identified from this moderately large sample of older adults, suggesting that more refined physical function phenotypes will be needed to identify the genetic basis of gait speed in aging.

## SIGNIFICANCE

Despite promising results from candidate gene studies, a systematic and comprehensive examination of genetic determinants of gait speed in a large sample of older adults has been lacking. Furthermore, previous study samples have been too small to detect the expected modest genetic effects especially in such complex and polygenic encoded traits. To address these limitations, we conducted a meta-analysis of GWAS of gait speed in 31,478 older adults and validate our candidate signal in a cohort of 2588 older adults. Close to 600 candidate genetic variants have been linked to gait speed. Such efforts have provided us with an increased knowledge of the biological systems which impact on gait speed; this may contribute to improved treatment strategies and drug development to promote aging with grace.

## INTRODUCTION

Gait speed has been described as the “sixth vital sign” because it is a core indicator of health and function in aging and disease [1]. Decline in gait speed is ubiquitous with aging in both men and women [2]. Gait speed is used to establish thresholds in community based activities, such as crossing a street [3, 4] or ambulating [5-7]. Slow gait speed is a consistent risk factor for disability, cognitive impairment, institutionalization, falls, hospitalization and mortality [8-10]. Improvement in gait speed is associated with better function and survival.

Many genetic and non-genetic factors (environment and disease) are likely to affect quantitative complex traits such as gait speed. There are individual differences in rates of decline in physical function, and genetic epidemiological studies provide a method for decomposing that variance into genetic and environmental sources. Twin studies suggest that genetic factors account for 15-51% of the variance of gait speed in older adults [11, 12]. Moreover, the contribution of genetic factors may increase with age [2, 11, 13-15]. Offspring of parents with exceptional longevity have better physical function and gait speed in age-specific comparisons to other individuals of comparable age and other characteristics [16, 17]. Effective gait requires the integration of many physiological systems, including the central and peripheral nervous system that create and execute the

motor program, the musculoskeletal system that moves and supports the body, and the cardio-pulmonary function that provides perfusion of adequate nutrients and oxygen to all of the integrated parts. All these physiological systems can be affected by genetic variation. Given the many pathways that may contribute to gait impairment, effect sizes of individual genetic variants are expected to be limited.

Previous candidate gene studies have implicated several loci as relevant to gait speed. Single nucleotide polymorphisms (SNP) in the Angiotensin-Converting Enzyme (*ACE*) gene have been linked to better mobility response to exercise. The R577X polymorphism in the alpha-actinin-3 encoding gene (*ACTN3*) was associated with elite athletic performance, and muscle strength and power in the general population, especially in women [18]. There is evidence that *ACE* I/D and *ACTN3* R577X polymorphisms, individually or in combination, have a significant influence on mobility and gait speed phenotypes in older women [19, 20]. Catechol-O-methyltransferase (*COMT*) polymorphisms have been associated with cognitive functions and gait speed [21]. The Met (158) Val polymorphism in *COMT* was linked to faster gait speed in older adults [21]. In addition, apolipoprotein E (*APOE*) genetic variation has been shown to influence the risk of gait speed decline [22-24]. Despite these promising results from candidate gene studies, a systematic and comprehensive examination of genetic determinants of gait speed in a large sample of older adults has been lacking. Furthermore, previous study samples have been too small to detect the expected modest genetic effects [25] especially in such complex and polygenic encoded traits [26].

To address these limitations, we conducted a meta-analysis of GWAS studies of gait speed in 31,478 older adults from the Cohorts for Heart and Aging Research in Genomic Epidemiology (CHARGE) consortium. We then tested our findings in a validation cohort of 2588 older adults participating in four independent studies.

## RESULTS

Gait speed is considered a marker of health and fitness in aging. Slow gait in older adults is associated with increased risk of multiple adverse events including loss of independence, increased risk of disability, falls [27,

28], progression of age-related disease including dementia [29] and death [9]. Slowing of gait is multifactorial with major contributions from potentially modifiable risk factors such as physical inactivity, cognitive impairment, muscle weakness, pain, poor vision, falls and obesity [30]. Gait speed was timed over fixed distance, and reported in m/sec units.

In a meta-analysis of 31,478 subjects from 17 cohorts (Table 1, Supplementary Text) with ~2.5M imputed SNPs (Supplementary Table 1) 536 SNPs (202 were independent (LD,  $r^2 < 0.8$ ) based on the HaploReg tool [31]) with  $p < 1 \times 10^{-4}$  of which 88 (48 were independent signals) had a p-value less than  $1 \times 10^{-5}$  and one SNP attained a p-value of less than  $p < 1 \times 10^{-6}$  (Table 2, Supplementary Table 2). The Q-Q plot (Supplementary Figure 1) did not provide evidence of inflation of test statistics. The Manhattan plot (Figure 1), highlighted 2 regions on chromosome 6 with high LD and suggestive association with gait speed (Regional plots [32] are displayed in Figure 2). These suggestive regions were further interrogated. Although none of the analyzed SNPs were genome wide significant ( $p < 5 \times 10^{-8}$ ), one

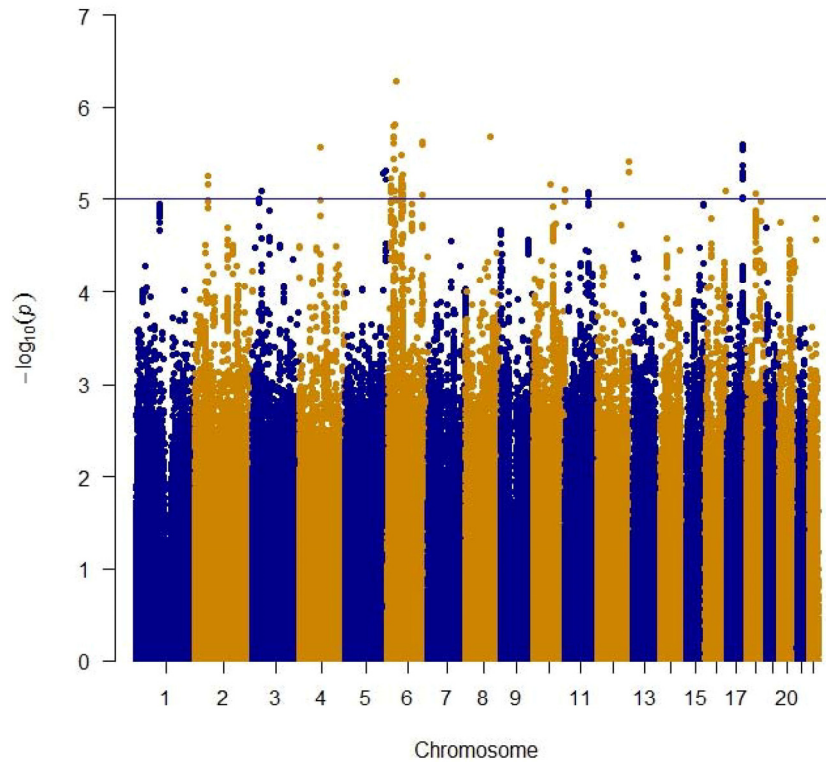
was present in the top ten (*POM121L2*), and 7 other genes (*CEP112*, *PHACTR1*, *CNTN5*, *PTPRT*, *FHOD3*, *ADAMTS18*, *PRIM2*) were highlighted based on the presence of SNPs with suggestive significant associations ( $p < 0.0001$ ) as well as low recombination rate and linkage disequilibrium  $r^2 > 0.8$  which may indicate significant signals in the segment (Figure 2, Supplementary Table 2, Supplementary Figure 2). The 536 suggestive SNPs ( $p < 1 \times 10^{-4}$  in the screening group) were tested for validation in four additional cohorts, GENOA, LLS, MrOSGBG and MrOSMalmo (2588 subjects). Among the top 10 SNPs (six independent) only three exceeded nominal significance which slightly improved the combined meta-analysis significance for *HLA-DPBI* SNPs (rs9501255, rs7763822 & rs3749985), however genome-wide levels of significance were not attained (Table 2).

### Candidate gene approach

None of the imputed variants previously reported as gait speed candidate genes such as *ACE*, *ACTN3*, *COMT* and *APOE* reached a nominally significant ( $p < 0.05$ ) threshold (Supplementary Table 3).

**Table 1. Demography of the screening and validation cohorts**

	Cohort	Age, y	%Female	N with gait and GWAS	Gait protocol
Screening	AGES	>65	58.9	3,166	6 meter walk
	ARIC	>60	59.5	445	7.6 meter walk
	BLSA	>60	49.5	334	6 meter walk
	CHS	≥65	60.9	3,184	4.6 meter walk
	FHS	>65	56.1	2,384	4 meter walk
	HABC	>70	47.1	1,482	6 meter walk
	HRS	>65	56.4	5,073	2.5 meter walk
	InCHIANTI	> 60	55.8	898	4 meter walk
	LBC1921	77-80	58.4	510	6 meter walk
	LBC1936	67-71	49.5	1,001	6 meter walk
	MrOS	≥65	None	4,643	6 meter walk
	ROSMAP	>60	69.2	1,646	2.5 meter walk
	RS-I	>55	53	706	6 meter walk
	RS-II	>55	51.8	813	6 meter walk
	RS-III	>45	56.0	1,392	6 meter walk
	SOF	≥65	100	3,441	6 meter walk
	TASCOG	>60	42	360	6 meter walk
Total Screening				31,478	
Validation	GENOA	>60	55	471	7.6 meter walk
	LLS	>60	47.2	235	4 meter walk
	MrOSGBG	>69	None	960	6 meter walk
	MrOSMalmo	>69	None	922	6 meter walk
Total Validation				2,588	



**Figure 1. Manhattan plot of meta-analysis of genome wide association studies of gait speed for ~2.5 million genotype and imputed SNPs. The blue line indicates the threshold used to select the 536 suggestive genome wide significant SNPs.**

**Table 2. Top 10 association meta-analysis results for gait speed**

SNP	Chr.:Position	E/NE Allele	F E Allele	Closest Gene	$\Delta$ (kb)/ gene location	Screening Set (n=31,478)			Validation Set (n=2,588)		Screening + Validation Set (n=34,066)	
						Beta (SE)	P	HetPVal	Beta (SE)	P	Beta (SE)	P
rs17527406	6:33709545	C/G	0.016	<i>UQCC2(MNF1)</i>	intron	0.040(0.007)	5.22E-7	0.2669	0.014(0.032)	0.65	0.037(0.007)	6.883e-7
rs9501255*	6:33087321	T/C	0.038	<i>HLA-DPB1</i>	3' UTR	0.023(0.005)	1.53e-6	0.5853	0.048(0.023)	0.04	0.024(0.005)	3.326e-7
rs7763822*	6:33092651	T/C	0.038	<i>HLA-DPB1</i>	3	0.023(0.005)	1.54e-6	0.5704	0.047(0.023)	0.04	0.024(0.005)	3.440e-7
rs3749985*	6:33086656	C/G	0.038	<i>HLA-DPB1</i>	3' UTR	0.023(0.005)	1.55e-6	0.5856	0.048(0.023)	0.04	0.024(0.005)	3.385e-7
rs7746199#	6:27293545	C/T	0.166	<i>POM121L2</i>	15	0.011(0.002)	1.58E-6	0.9658	0.011(0.008)	0.19	0.011(0.002)	7.125e-7
rs12155739	8:102084750	C/T	0.030	<i>NCALD</i>	intron	-0.041(0.008)	2.04E-6	0.2076	-0.024(0.032)	0.45	-0.039(0.008)	1.858e-6
rs3800318#	6:27295862	A/T	0.830	<i>POM121L2</i>	13	-0.011(0.002)	2.07E-6	0.966	-0.011(0.008)	0.20	-0.011(0.002)	9.686e-7
rs13211166	6:27298161	A/T	0.190	<i>POM121L2</i>	11	0.011(0.002)	2.12E-6	0.9688	0.010(0.009)	0.24	0.010(0.002)	1.136e-6
rs9403969	6:148622038	T/G	0.737	<i>SASH1</i>	70	0.009(0.002)	2.34e-6	0.4004	0.005(0.007)	0.50	0.009(0.002)	2.351e-6
rs16897515#	6:27310241	A/C	0.161	<i>POM121L2</i>	missense	0.011(0.002)	2.41E-6	0.9505	0.007(0.009)	0.42	0.010(0.002)	2.080e-6

\*First gene segment, #second gene segment. E/NE-Effect-, Non-Effect allele; F E-Frequency of Effect Allele;  $\Delta$ -distance to proximal gene; HetPVal- Heterogeneity P Value.

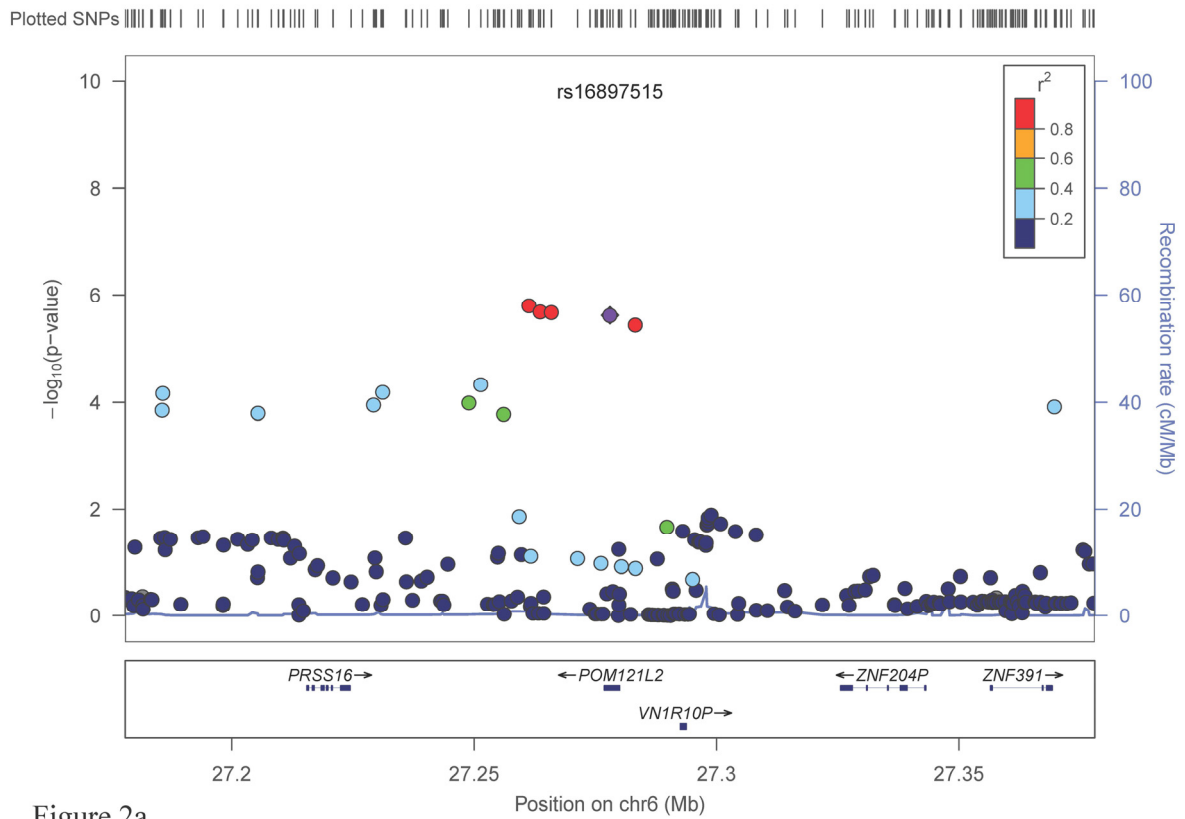


Figure 2a

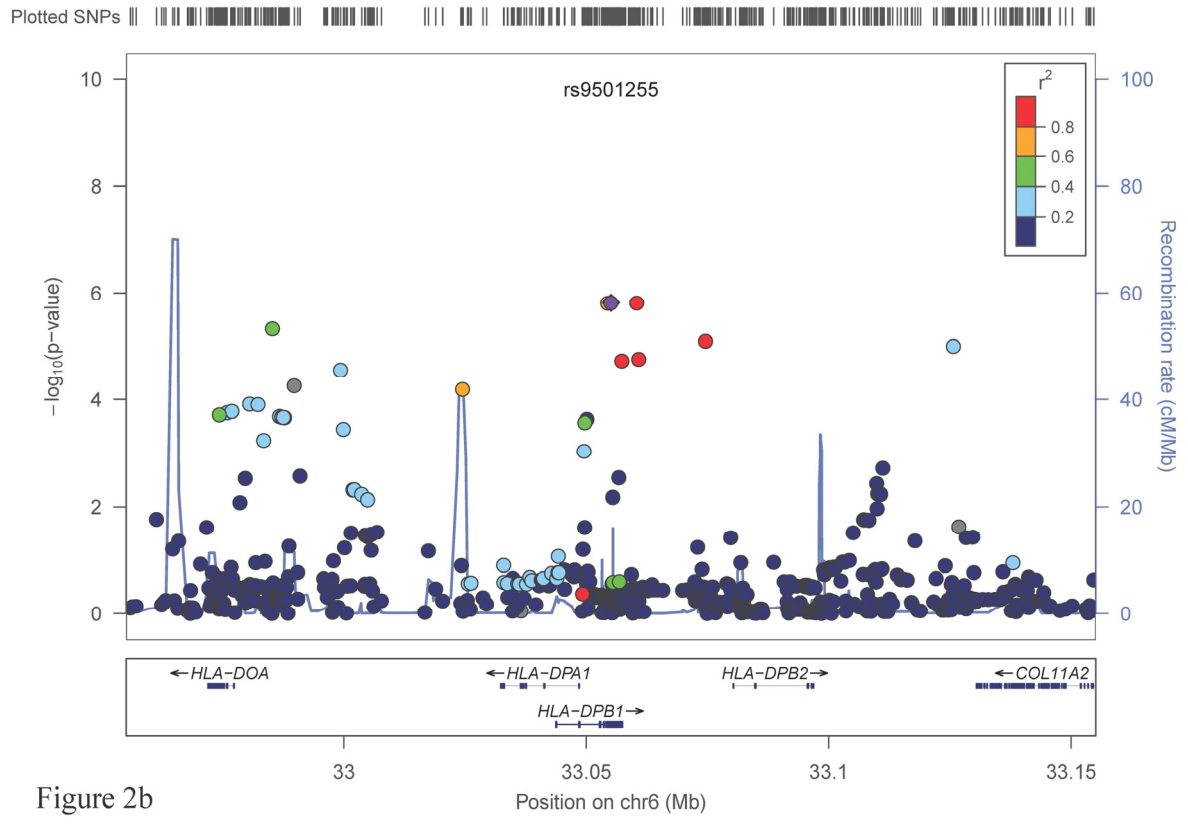


Figure 2b

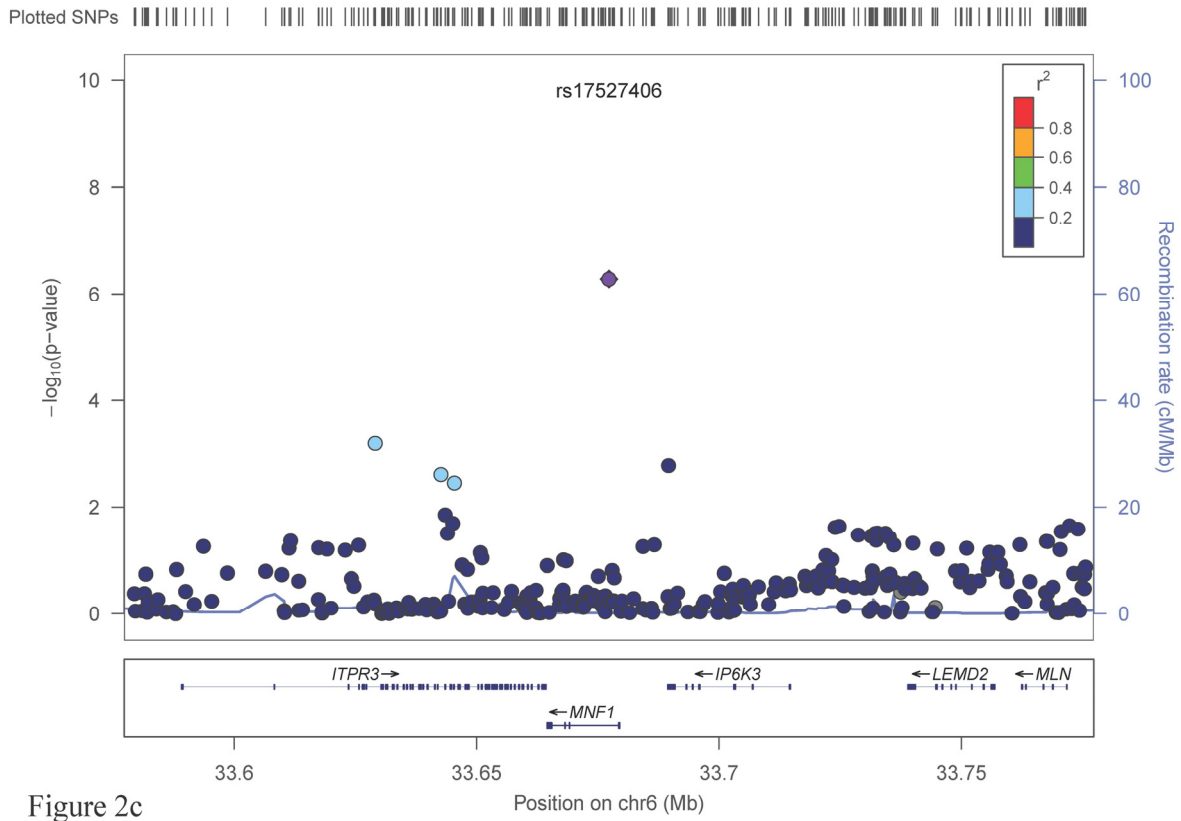


Figure 2c

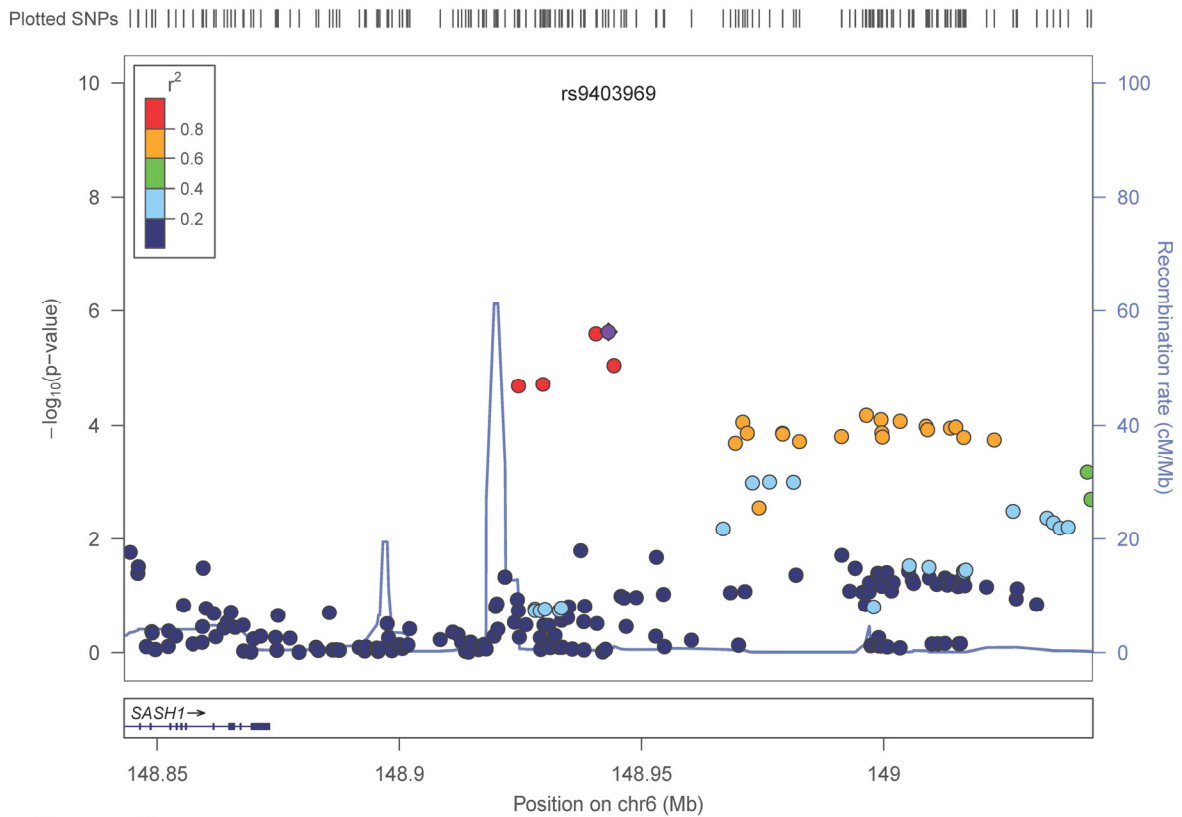


Figure 2d



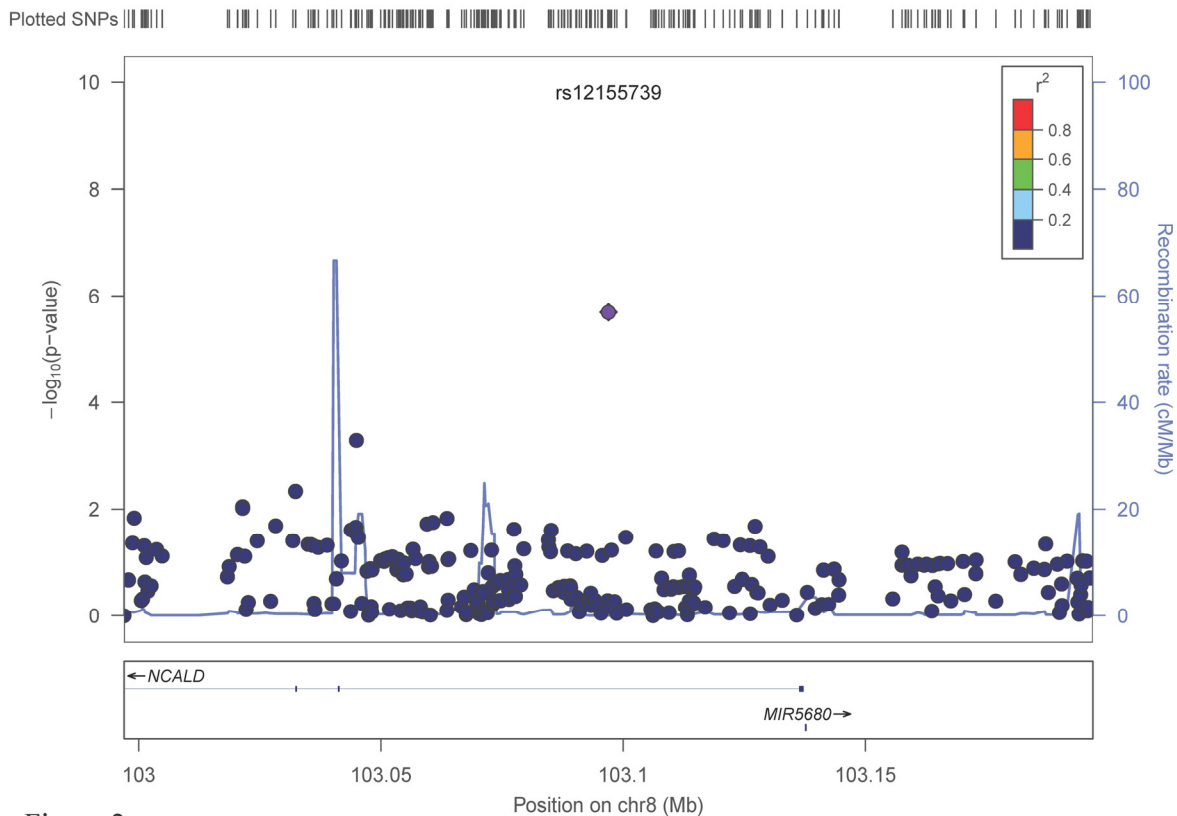


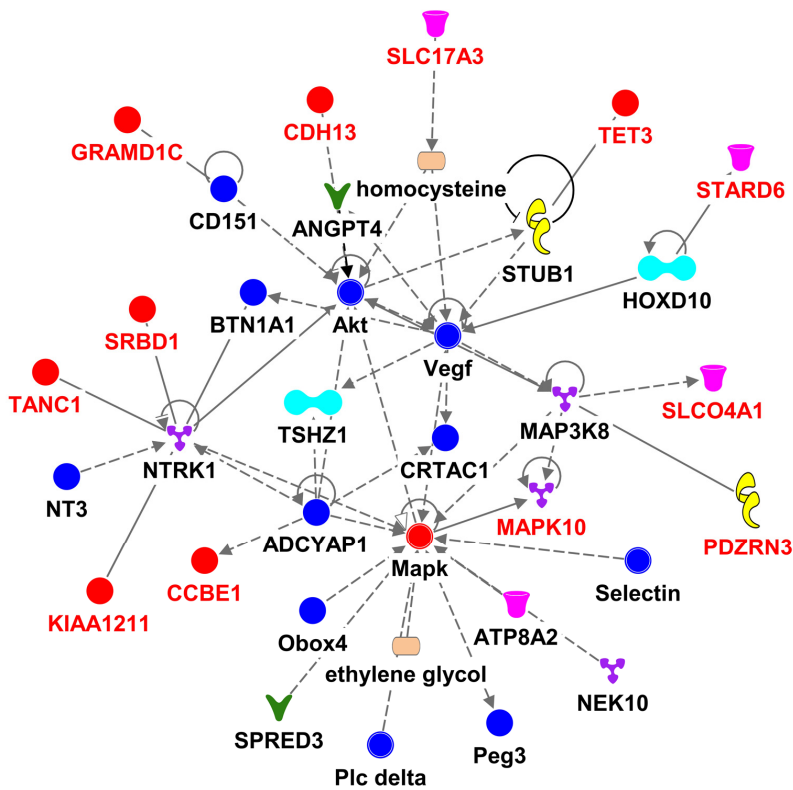
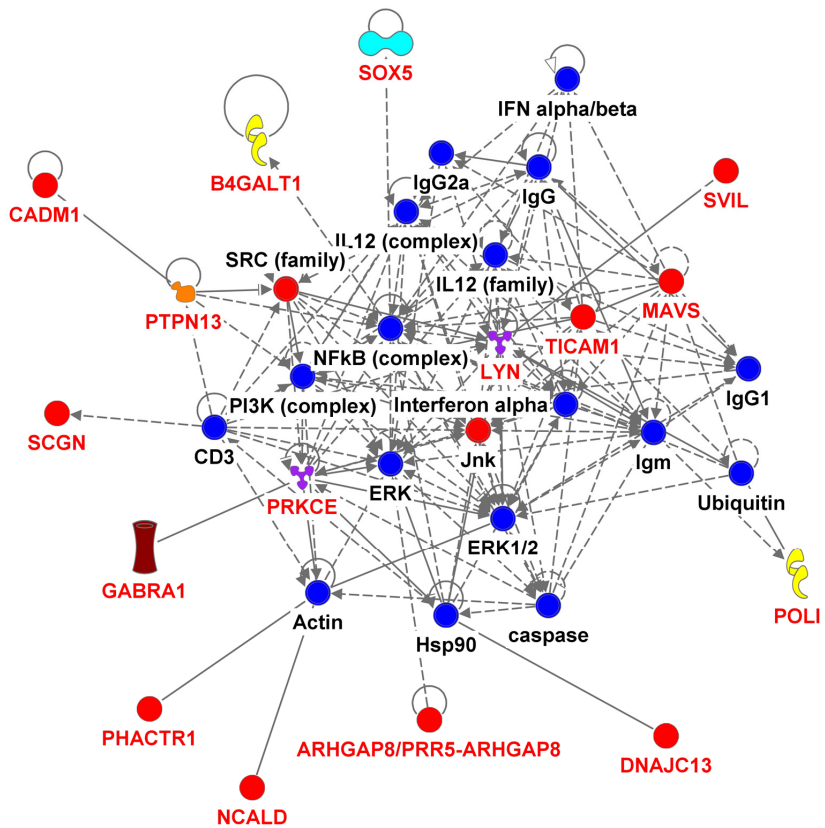
Figure 2e

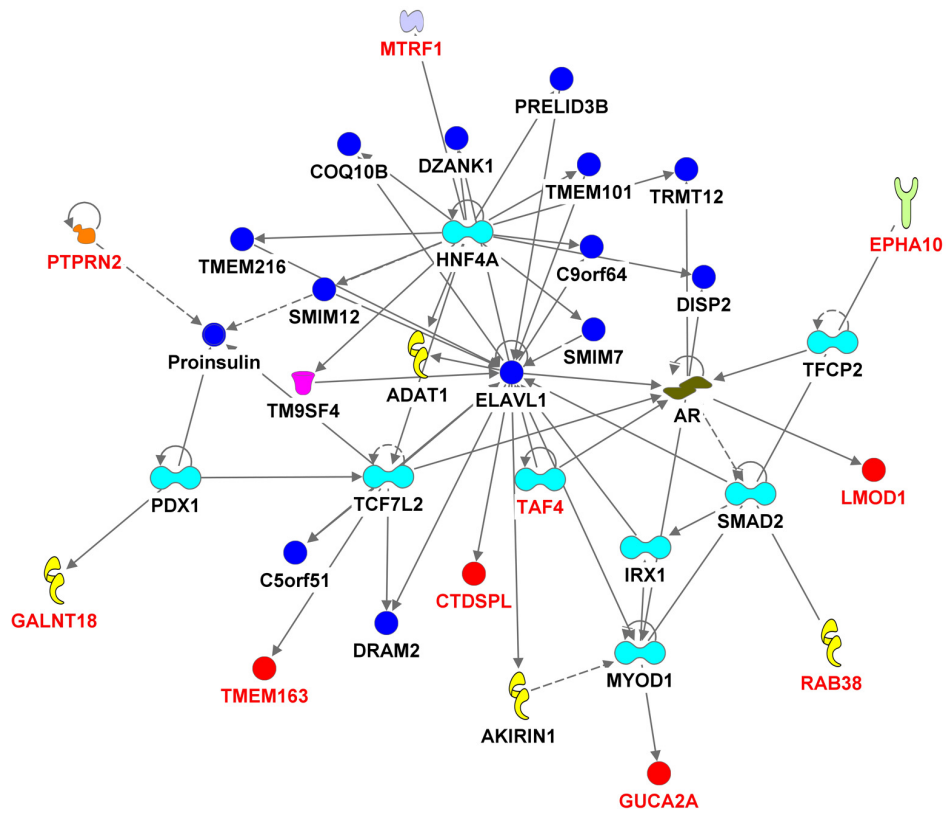
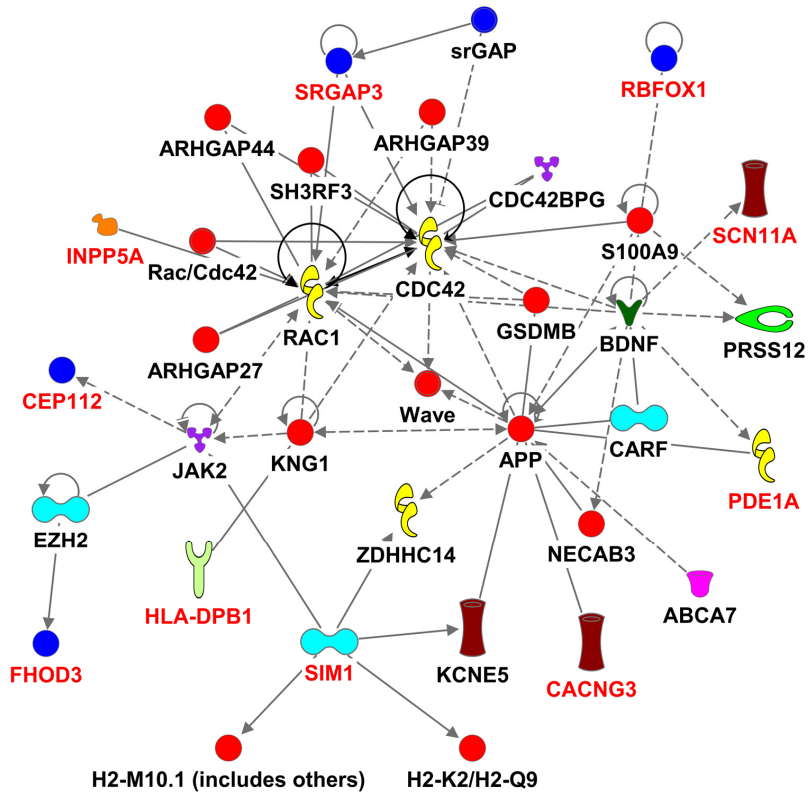
**Figure 2. LocusZoom plots for the suggested top 10 SNPs (5 genes) associated with gait speed of the combined analysis. (A) *POM121L2*; (B) *HLA-DPB1*, (C) *UQCC2* (*MNF1*), (D) *SASH1*, (E) *NCALD*.** In each plot, the  $-\log_{10}$  of  $p$  values are on the left y-axis; the SNP genomic position (HG19) on the x-axis; the estimated recombination rate from 1000 genomes Nov. 2014 EUR are on the right y-axis and plotted in blue. The most significant SNP is in purple diamond and plotted using the  $p$  value attained from the meta-analysis. SNPs are colored to reflect linkage disequilibrium (LD) with the most significant SNP in red (pairwise  $r^2$  from 1000 genomes Nov. 2014 EUR). Gene annotations are from the SeattleSeqAnnotation141.

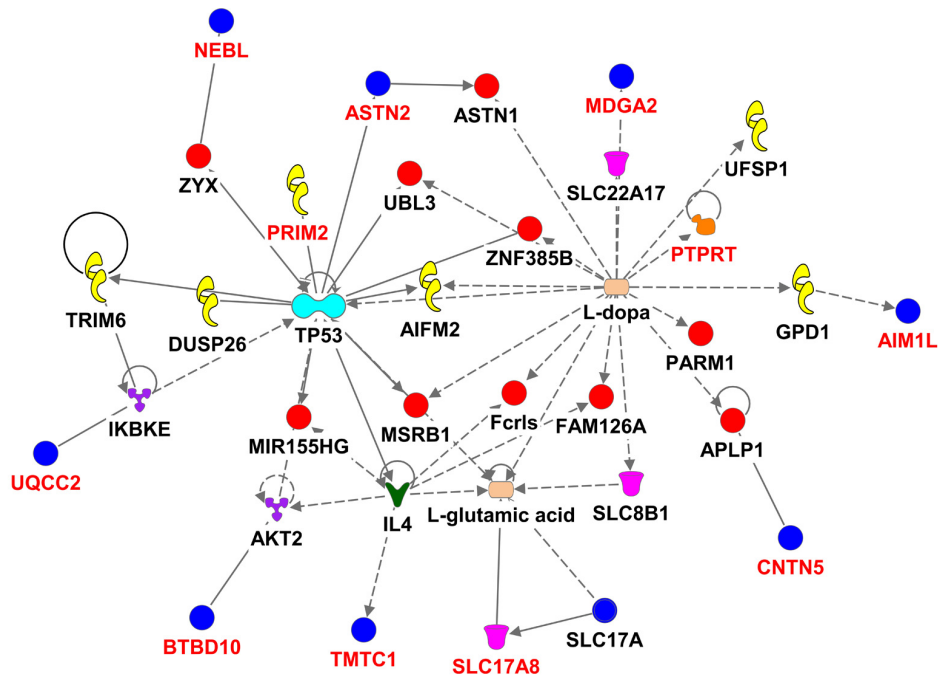
## Pathway analysis

We used the 536 suggestive SNPs to generate the network analysis, in which 283 SNPs representing 68 genes (Supplementary Table 4) were located in both the IPA dataset and the SeattleSeqAnnotation141 for SNP annotation (the remaining 253 SNPs did not map to a gene). Among the genes having the highest number of defining SNPs, were *CEP112* (38 SNPs), *PHACTR1* (23 SNPs), *CNTN5* (19 SNPs), *PTPRT* (18 SNPs), *FHOD3* (17 SNPs), *ADAMTS18* (12 SNPs) and *PRIM2* (11 SNPs). The vast majority of these genes' products are located in the cytoplasm and plasma membrane while the rest are in the nucleus, extracellular space and other cellular spaces. Ten types of protein actions (enzyme, transporter, phosphatase, transcription regulator, kinase, ion channel, transmembrane receptor, translation regulator, ligand-dependent nuclear recep-

tor and peptidase) are enumerated in Supplementary Table 5. Five of them serve as a biomarker for diagnosis, disease progression, prognosis, and unspecified application and five of them were targets for drug development including *PRIM2*, *GABRA1*, *LYN*, *PRKCE* and *SCN11A*. Five major putative disease and function networks were established using the candidate genes (based on the IPA software analysis significance classification) and were classified accordingly to cancer, gastrointestinal disease, organismal injury and abnormalities, neurological disease, cell and tissue morphology, cellular function, development and maintenance, amino acid metabolism, small molecule biochemistry, gene expression, cell-to-cell signaling and interaction, nervous system development and function, cellular assembly and organization. Seven genes were not mapped to any network (see Figure 3, Supplementary Table 6).







**Figure 3. Ingenuity pathway analysis of genes associated with gait speed.** Genes are represented as nodes; solid lines indicate direct- and hatched lines indirect- interaction. Gene functions are color-coded as follows: Red= other, Navy Blue =Group/Complex, Yellow= Enzyme, Turquoise= transcription regulator, Brown= Ion Channel, Orange= Phosphatase, Purple = Kinase, Magenta= Transporter, Beige=chemical-endogenous mammalian, Hunter Green (Dark Green) = Growth factor, light Green= Transmembrane Receptor, Light Purple= Translation Regulator, Olive Green=Ligand-dependent nuclear receptor, Bright green= Peptidase.

### eQTL analysis

By querying a large collection of eQTL results (listed in Supplementary Text), we obtained a long list of possible SNP relationships with gene expression (Supplementary Table 7). We also identified the strongest eQTL SNP for each particular transcript in each study. Those SNPs with low p-values (for association with gene expression,  $p < 10^{-8}$ ) and high LD ( $D' > 0.9$ ) with the functional variant, were picked as candidates of signal concordance between the eQTL signals and gait speed signal. Following this analysis, several transcripts including PRSS16 and WDSUB1 were highlighted (Supplementary Table 7). We also observed a relationship between a SNP and PTPRT expression (in liver tissue), which in addition to the meta-analysis and pathway analysis emphasized its potential functional link through its synaptic function and neuronal development, both of which may contribute to [33] gait speed. By emphasizing a strong relationship of the best eQTL with our queried SNPs, we likely underreport SNP-expression relationships due to missing LD information and the inability to project LD relationships for trans-eQTLs in the region.

Applying HaploReg v4.1 analysis to the 536 variants resulted in 9 categories (Supplementary Table 8): miscRNA (1 variant); snoRNA (2 variants); microRNA (4 variants); snRNA (9 variants); pseudogenes (14 variants); sequencing in progress (43 variants); LINC RNA (86 variants); and 372 variants within protein coding genes. In addition, some variants annotate to the same gene resulting in a total of 139 genes (protein-coding or non-coding). Of those genes, 6 are exceptionally long, containing over a million base-pairs, the longest of which is PTPRT coded by 1117219bp. The shortest genes are the ones coding for micro (MIR3143) or small nuclear (U7) RNAs at 63bp each. There is only partial information regarding the chromatin state of each variant. However, from the information gathered in the analysis we observed 14 transcription start sites and 245 enhancers (Supplementary Table 8).

### DISCUSSION

In this genome-wide association study of gait speed in 31,478 adults ages 60 and older from 17 different cohorts in the USA, Europe and Australia and 2,588

individuals in four validation cohorts, we did not discover any genome-wide significant association with gait speed nor did we confirm gait speed associations with previously reported candidate genes (i.e. *ACE*, *ACTN3*, *COMT* and *APOE*) (Supplementary Table 3). However, our analyses revealed some potentially relevant SNPs that could be targeted for further analyses regarding their associations with gait speed.

Our results shed light on several candidate genetic polymorphisms that did not achieve genome wide significance but which had multiple signals on the gene segment, an observation that supported the association with the trait of interest. In addition, these SNPs map to genes that were either linked to physiologic functions expected to influence gait speed (such as neuromuscular function, cardiac function and muscle health or brain function) *ADAMTS18*, a gene associated with bone mineral density, could be associated with gait speed if individuals with variants in this gene had suffered from fracture leading to slowing of gait [34]. In functional studies *ADAMTS18* levels were significantly lower in subjects with non-healing skeletal fractures compared to normal subjects [35]. *POM121L2* - an ion transport gene [36] - was listed in the top ten meta-analysis genes with four variants, making it a potential candidate for our study. This gene has been linked to schizophrenia, [37], suggesting a potential brain-related association with gait speed. One of the top candidates in our analysis was *UQCC2* (also known as M19 or MNF1), a mitochondrial membrane protein that regulates skeletal muscle differentiation and insulin secretion [38]. Although *UQCC2* function has a clear link to gait speed, the fact that in this study only one SNP found within *UQCC2* demonstrated suggestive significance, which provides less confidence of a true association. *NCALD*, a calcium-binding protein, has been associated with diabetic nephropathy [39]. The region that was highlighted next to *SASH1*, a tumor suppressor gene, has multiple signals associated with gait speed. However, there is a high recombination rate between this region and the candidate gene (Figure 2), suggesting a higher dissociation between the gene and the signaled region. The last candidate from the top 10 SNP association list is *HLA-DPBI*, an immune response gene that has been linked to rheumatoid and inflammatory myopathies [40, 41]. Interestingly, one of its variants (rs7763822) was indicated in systemic sclerosis susceptibility in Korean subjects [42] suggesting a pleiotropic effect.

*CEP112* involved in proper cell cycle progression [43] was not listed among the top 10 SNPs (Table 2) however its clear dominance (38 SNPs) among the 536 suggestive SNPs make it an attractive candidate for further functional association studies with gait speed.

Similar to *CEP112* variants, *PHACTR1* regulates cardiac  $\alpha$ -actin isoform ratio [44] and actomyosin assembly [45]; *CNTN5* is associated with neuron function [46]; *PTPRT* regulates synaptic function and neuronal development [33] and serves as a genuine susceptibility locus for rheumatoid arthritis [33]; *FHOD3*, is a key regulator in the cardiac muscle [47] and sarcomere organization in striated muscle cells [48]; and *PRIM2* is involved in DNA replication and transcription and is crucial for normal growth and development [49]. This list of genes repeatedly implicates associated signals that are important for neuromuscular function, cardiac function and muscle health, which could reasonably contribute to the complex trait of gait speed.

A second tier of locus with repetitive signals established among the 536 suggestive SNPs included *PDZN3*, which is implicated in muscle function and regeneration [50-52], *CACNG3*, a voltage-dependent calcium channel subunit [53] that was previously linked to ataxic phenotype in mice [54], *ASTN2* that functions in neuronal migration [55] and that was associated with hip osteoarthritis susceptibility [56], *SIMI* involved in coordinating muscle activity and generating rhythmic activity [57] and also associated with obesity [58], and *MDGA2*, which is required for proper development of cranial motoneuron subtypes [59].

The eQTL analysis (various tissues and cell types, listed in Supplementary Text) of the 536 suggestive SNPs reported a couple of candidate genes such as *PRSSI6*, a gene encoding serine protease expressed exclusively in the thymus. *PRSSI6* was associated with exercise [60] and was linked to *COMT* (a candidate gene for gait speed (20)). Both are regulated by *ZNF804a* [61]. This link between the two genes (*PRSSI6* and *COMT*) may support our gait speed association results. Another candidate gene from our eQTL analysis was *WDSUB1* a U-box ubiquitin ligases encoded protein which was associated with sudden cardiac death [62]. A link with cardiovascular diseases may indicate a potential cardiovascular effect on gait speed. The last candidate in this analysis is *PTPRT*, a gene that regulates synaptic function and neuronal development. It is possible that its link to gait speed (operates through its role in diabetes [63]). The fact that it was present in all three sets of analysis results may suggest a stronger candidate for further analysis.

The lead motif of the network analysis in all 5 disease networks was “cellular function”, however, the candidate SNPs from the multiple analysis strategies strongly suggested links to bone, skeleton, muscle and brain, incorporating development, structure and function. While our SNP associations did not achieve

genome wide significance, we believe that we demonstrated a potential link to gait speed. To exclude false positive signals, these associations should be pursued further in controlled experiments as well as animal models, which will increase our understanding of the biology of gait speed deterioration with aging. Such efforts would provide us with an increased knowledge of the biological systems which impact on gait speed; this may contribute to improved treatment strategies and drug development to promote aging with grace.

This study did not provide conclusive evidence for the genetics contributing to gait speed. While the large sample is a strength (and we have the power to detect smaller effects), the observed associations suggest that an even larger sample is required to establish genetic contributions to the gait speed phenotype. The individual effects of common SNPs for complex traits such as gait speed are expected to be very small. From studies of other polygenic complex traits, it has been observed that the number of discovered variants is strongly correlated with experimental sample size [64]. Another potential explanation why we did not observe genome wide significant associations is that there are many potential pathways that contribute to gait speed, including nervous system function (neuromuscular, central nervous system), musculoskeletal conditions such as sarcopenia and osteoarthritis, cardiovascular disease, visual function, psychological factors and other contributors. This complexity of phenotype may make it difficult to discover associations. Phenotype refinement may be a future approach to explore.

In summary, the lack of genome-wide significant signals from this moderately large sample of older adults suggests that larger samples (or study to subclassify the gait speed phenotype) will be needed to identify SNP-based associations. Also, it may suggest that downstream mechanisms are more likely to make more important contributions to gait speed. Gait speed is a complex phenotype with many potential contributors; it is not unsurprising that it should be governed by multiple genes. However, we were able to use network analyses to define some potential networks of genes that might be of relevance for this phenotype. Future studies may be best positioned to focus on one network in more detail and to examine gene-environment or gene-behavior- environment interactions.

## **METHODS**

### **Subjects**

The Aging and Longevity Working Group of the CHARGE Consortium [65, 66], was formed to facilitate

genome-wide association study meta-analyses of age associated diseases and phenotypes among multiple large and well-phenotyped cohorts of older individuals who underwent genotyping.

### **Screening cohorts**

A combined cohort of 31,478 subjects age 60 years and older with timed walks constituted our discovery sample (Table 1). Timed walk at usual pace was converted to gait speed (m/s) to harmonize the phenotype across cohorts. Participants of the following 17 European descendent cohorts were included (Supplementary Material):

The Age, Gene/Environment Susceptibility-Reykjavik (AGES), The Atherosclerosis Risk in Communities (ARIC), Baltimore Longitudinal study on Aging (BLSA), Cardiovascular Health Study (CHS), Framingham Heart Study (FHS), Health, Aging, and Body Composition Study (HABC), Health and Retirement Study (HRS), Invecchiare in Chianti (InCHIANTI), Lothian Birth Cohorts 1921 (LBC1921) and 1936 (LBC1936), Osteoporotic Fractures in Men Study (MrOS), The Religious Orders Study and Rush Memory and Aging Project (ROSMAP), Rotterdam Study (RS-I, -II, -III), Study of Osteoporotic Fractures (SOF), Tasmanian Study of Cognition and Gait (TASCOG) (Table 1, Supplementary Text). All participants with gait speed assessments including participants who were able to walk with assistance of a cane were included in this analysis. Exclusion criteria included missing gait assessments and inability to walk (Supplement Text).

### **Validation cohorts**

The validation cohort consisted of 2,588 subjects (>60 years) from the Genetic Epidemiology Network of Arteriopathy (GENOA), Leiden Longevity Study (LLS), Osteoporotic Fractures in Men Study (MrOS) Sweden, Malmö[MrOSMalmö] and Gothenburg [MrOSGBG] studies (Table 1, Supplement text). Together these cohorts reach the minimum number of subjects required for sufficient statistical power (Our power calculation shows that given a fixed sample size (n=2500) our analysis will have >80% power to detect MAF=0.01,  $\alpha < 0.0001$ ) to validate significant signal(s) from the screening cohort using the same harmonized gait speed phenotype. Results from the screening and validation cohorts were meta-analyzed.

### **Phenotype definition**

The different methods of assessing gait speed in individual cohorts are described in Table 1 and

Supplementary Text. Variability in the methods of assessing gait speed in the participating cohorts included differences in distance walked (8 to 25 feet) and measurement techniques (instrumented walkway versus stopwatch). Previous reports including 4 cohorts from this report (CHS, HABC, InCHIANTI and SOF) have suggested that there is a high correlation ( $r^2 > 0.9$ ) between the different methods of measuring gait speed [9, 24, 67]. The mean overall gait speed was  $1.13 \pm 0.25$  m/sec, and varied from  $0.66 \pm 0.16$  m/sec to  $1.66 \pm 0.41$  m/sec in the individual cohorts (Supplementary Table 9, Supplementary Figure 3).

## Genotyping

A structured, pre-specified analytical plan was applied to each of the 17 cohorts included in the screening sample. Genome-wide analysis of imputed genotypes, summarized in Supplementary Text, were conducted in each cohort. Imputation (using either BimBam or MACH) resulted in approximately 2.5 million HapMap SNPs being available for analysis. Imputation details, QC and SNP count per cohort can be found in Supplementary Text and Supplementary Table 1. Exclusion criteria for SNP in each of the 21 cohorts (screening and validation) included: 1) minor allele frequency (MAF)  $< 0.005$ ; 2) imputation quality ( $R^2$  or  $oevar\_imp < 0.3$ ); and for the meta-analysis, SNPs with average MAF  $\leq 0.01$  and total N  $< 15,000$ .

## Cohort-specific analyses

Multiple linear regression of imputed SNP dosages on gait speed was performed using an additive model, i.e. as a count of the number of variant alleles present (1 degree of freedom). Sex-combined analysis was performed. Adjustment for age (at time of exam), sex, study site (for cohorts with multiple sites), principal components to control for population stratification, height, and presence of osteoarthritis (yes/no) if available were included. For cohorts with osteoarthritis data available, the analysis was done excluding participants with osteoarthritis (Supplementary Text and Supplementary Table 10).

## Meta-analysis

Inverse variance weighted meta-analysis was performed on summary statistics of the cohort-level association analyses. Meta-analysis of gait speed (Screening and validation cohorts were analyzed separately as well as together (joint meta-analysis)) was performed using METAL [68] with a fixed effects model of beta estimates and standard errors from each cohort. In addition, we applied heterogeneity test between studies

(on both screening and validation cohorts) using METAL. A p-value threshold (Bonferroni-adjusted) of  $p < 5 \times 10^{-8}$  was used to indicate genome-wide statistical significance.

## Pathway analysis

We assembled a list of 536 meta-analyzed SNPs (representing 69 genes) that were highly suggestively associated ( $p < 1 \times 10^{-4}$ ) with gait speed. This list resulted in 67 candidate genes (Annotated by Ingenuity Pathway Analysis (IPA) and SeattleSeqAnnotation) being identified which were used in the IPA analysis ([www.ingenuity.com](http://www.ingenuity.com)). The resulting classification of networks, pathways, biological processes and molecular functions are represented in tables and graphic format (Figure 3, Supplementary Table 4, 5 and 6).

## Expression quantitative trait loci (eQTL) analysis

We examined existing eQTL resources for the candidate suggestive list of 536 SNPs ( $p < 10^{-4}$ ) to further explore their biological and functional relevance to gait speed (Supplementary Text). We queried these SNPs against an eQTL database (listed in Supplementary Text) containing eQTL results from over 100 studies across a wide range of tissues. A general overview of a subset of  $> 50$  eQTL studies has been published [69], with specific citations for the included datasets included in the Supplementary Material.

Further we applied the HaploReg v4.1 annotation tool for TF analysis of 536 SNPs suggestively associated with gait speed.

## CONFLICTS OF INTEREST

The authors of this manuscript have no conflict of interests to declare.

## FUNDING

Acknowledgments and funding for the participating studies are listed below.

## AGES

This study has been funded by NIH contracts N01-AG-1-2100 and 271201200022C, the NIA Intramural Research Program, Hjartavernd (the Icelandic Heart Association), and the Althingi (the Icelandic Parliament). The study is approved by the Icelandic National Bioethics Committee, VSN: 00-063. The researchers are indebted to the participants for their willingness to participate in the study.

## **ARIC**

The Atherosclerosis Risk in Communities Study is carried out as a collaborative study supported by National Heart, Lung, and Blood Institute contracts (HHSN268201100005C, HHSN268201100006C, HHSN268201100007C, HHSN268201100008C, HHSN268201100009C, HHSN268201100010C, HHSN268201100011C, and HHSN268201100012C), R01HL087641, R01HL59367 and R01HL086694; National Human Genome Research Institute contract U01HG004402; and National Institutes of Health contract HHSN268200625226C. The authors thank the staff and participants of the ARIC study for their important contributions. Infrastructure was partly supported by Grant Number UL1RR025005, a component of the National Institutes of Health and NIH Roadmap for Medical Research. This project was also partially supported from NIH grant R01-HL093029.

## **BLSA**

The BLSA was supported by the Intramural Research Program of the NIH, National Institute on Aging.

## **CHS**

The CHS research was supported by NHLBI contracts HHSN268201200036C, HHSN268200800007C, HHSN268200960009C, N01HC55222, N01HC85079, N01HC85080, N01HC85081, N01HC85082, N01HC85083, N01HC85086; and NHLBI grants HL080295, HL087652, HL105756 with additional contribution from the National Institute of Neurological Disorders and Stroke (NINDS). Additional support was provided through AG023629 from the National Institute on Aging (NIA). A full list of CHS investigators and institutions can be found at <http://chs-nhlbi.org/>. The provision of genotyping data was supported in part by the National Center for Advancing Translational Sciences, CTSI grant UL1TR000124, and the National Institute of Diabetes and Digestive and Kidney Disease Diabetes Research Center (DRC) grant DK063491 to the Southern California Diabetes Endocrinology Research Center.

## **FHS**

The Framingham Heart Study phenotype-genotype analyses were supported by NIA R01AG29451 (JMM, KLL). The Framingham Heart Study of the National Heart Lung and Blood Institute of the National Institutes of Health and Boston University School of Medicine was supported by the National Heart, Lung and Blood Institute's Framingham Heart Study Contract No. N01-HC-25195 and its contract with Affymetrix,

Inc for genotyping services (Contract No. N02-HL-6-4278). Analyses reflect intellectual input and resource development from the Framingham Heart Study investigators participating in the SNP Health Association Resource (SHARe) project. A portion of this research was conducted using the Linux Cluster for Genetic Analysis (LinGA-II) funded by the Robert Dawson Evans Endowment of the Department of Medicine at Boston University School of Medicine and Boston Medical Center. The investigators thank the participants and the staff for their support of the Framingham Heart Study. Dr Kiel's effort was supported by NIAMS grant RO1 AR41398.

## **HABC**

This research was supported by NIA contracts N01AG62101, N01AG62103, and N01AG62106. The genome-wide association study was funded by NIA grant 1R01AG032098-01A1 to Wake Forest University Health Sciences and genotyping services were provided by the Center for Inherited Disease Research (CIDR). CIDR is fully funded through a federal contract from the National Institutes of Health to The Johns Hopkins University, contract number HHSN268200782096C. This research was supported in part by the Intramural Research Program of the NIH, National Institute on Aging.

## **HRS**

HRS is supported by the National Institute on Aging (NIA U01AG009740). Genotyping was funded separately by NIA (RC2 AG036495, RC4 AG039029). Our genotyping was conducted by the NIH Center for Inherited Disease Research (CIDR) at Johns Hopkins University. Genotyping quality control and final preparation of the data were performed by the Genetics Coordinating Center at the University of Washington.

## **InCHIANTI**

The InCHIANTI study baseline (1998-2000) was supported as a "targeted project" (ICS110.1/RF97.71) by the Italian Ministry of Health and in part by the U.S. National Institute on Aging (Contracts: 263 MD 9164 and 263 MD 821336).

## **LBC1921 and LBC1936**

We thank the cohort participants and team members who contributed to these studies. Phenotype collection in the Lothian Birth Cohort 1921 was supported by the UK Biotechnology and Biological Sciences Research Council (BBSRC), The Royal Society and The Chief Scientist Office of the Scottish Government. Phenotype



collection in the Lothian Birth Cohort 1936 was supported by Research Into Ageing (continues as part of Age UK The Disconnected Mind project). Genotyping of the cohorts was funded by the BBSRC. The work was undertaken by The University of Edinburgh Centre for Cognitive Ageing and Cognitive Epidemiology, part of the cross council Lifelong Health and Wellbeing Initiative (MR/K026992/1). Funding from the BBSRC and Medical Research Council (MRC) is gratefully acknowledged.

### **MrOS**

The Osteoporotic Fractures in Men (MrOS) Study is supported by National Institutes of Health funding. The following institutes provide support: the National Institute of Arthritis and Musculoskeletal and Skin Diseases (NIAMS), the National Institute on Aging (NIA), the National Center for Research Resources (NCRR), and NIH Roadmap for Medical Research under the following grant numbers: U01 AR45580, U01 AR45614, U01 AR45632, U01 AR45647, U01 AR45654, U01 AR45583, U01 AG18197, U01-AG027810, and UL1 RR024140. The National Institute of Arthritis and Musculoskeletal and Skin Diseases (NIAMS) provides funding for the MrOS ancillary study ‘Replication of candidate gene associations and bone strength phenotype in MrOS’ under the grant number R01-AR051124. The National Institute of Arthritis and Musculoskeletal and Skin Diseases (NIAMS) provides funding for the MrOS ancillary study ‘GWAS in MrOS and SOF’ under the grant number RC2ARO58973.

### **ROSMAP**

The data from the Rush Alzheimer’s Disease Center used in these analyses was supported by National Institute on Aging grants P30AG10161, R01AG17917, R01AG15819, R01AG30146, the Illinois Department of Public Health, R01NS078009 and the Translational Genomics Research Institute.

### **RS-I, -II, -III**

The generation and management of GWAS genotype data for the Rotterdam Study are supported by the Netherlands Organisation of Scientific Research NWO Investments (nr. 175.010.2005.011, 911-03-012). This study is funded by the Research Institute for Diseases in the Elderly (014-93-015; RIDE2), the Netherlands Genomics Initiative (NGI)/Netherlands Organisation for Scientific Research (NWO) project nr. 050-060-810. The Rotterdam Study is funded by Erasmus Medical Center and Erasmus University, Rotterdam, Netherlands Organization for the Health Research and Development

(ZonMw), the Research Institute for Diseases in the Elderly (RIDE), the Ministry of Education, Culture and Science, the Ministry for Health, Welfare and Sports, the European Commission (DG XII), and the Municipality of Rotterdam. This research is supported by the Dutch Technology Foundation STW, which is part of the NWO, and which is partly funded by the Ministry of Economic Affairs. MAI is supported by ZonMW grant number 916.13.054.

### **SOF**

The Study of Osteoporotic Fractures (SOF) is supported by National Institutes of Health funding. The National Institute on Aging (NIA) provides support under the following grant numbers: R01 AG005407, R01 AR35582, R01 AR35583, R01 AR35584, R01 AG005394, R01 AG027574, and R01 AG027576.

### **TASCOG**

All participants and research staff who took part in TASCOG are duly acknowledged, in addition to funding bodies including the National Health and Medical Research Council (NHMRC) of Australia, and the National Institutes of Health (NIH) USA.

### **GENOA**

Support for the Genetic Epidemiology Network of Arteriopathy (GENOA) was provided by the National Heart, Lung and Blood Institute (HL054457, HL087660, HL119443) and the National Institute of Neurological Disorders and Stroke (NS041558) of the National Institutes of Health. Genotyping was performed at the Mayo Clinic (S.T.T, Mariza de Andrade, Julie Cunningham) and was made possible by the University of Texas Health Sciences Center (Eric Boerwinkle, Megan Grove-Gaona). We would also like to thank the families that participated in the GENOA study.

### **LLS**

The research leading to these results has received funding from the European Union’s Seventh Framework Programme (FP7/2007-2011) under grant agreement number 259679. This study was financially supported by the Innovation-Oriented Research Program on Genomics (SenterNovem IGE05007), the Centre for Medical Systems Biology and the Netherlands Consortium for Healthy Ageing (grant 050-060-810), all in the framework of the Netherlands Genomics Initiative, Netherlands Organization for Scientific Research (NWO), by Unilever Colworth and by BBMRI-NL, a Research Infrastructure financed by the Dutch government (NWO 184.021.007).

## MrOS Sweden

This study was supported by the Swedish Research Council and by grants from the Swedish government (under the Avtal om Läkarutbildning och Medicinsk Forskning [Agreement for Medical Education and Research]), the Lundberg Foundation, the Torsten Söderberg Foundation, the Novo Nordisk Foundation and the Knut and Alice Wallenberg Foundation.

## REFERENCES

1. Fritz S, Lusardi M. White paper: "walking speed: the sixth vital sign". *J Geriatr Phys Ther.* 2009; 32:46–49. doi: 10.1519/00139143-200932020-00002
2. Bohannon RW, Williams Andrews A. Normal walking speed: a descriptive meta-analysis. *Physiotherapy.* 2011; 97:182–89. doi: 10.1016/j.physio.2010.12.004
3. Bollard E, Fleming H. A study to investigate the walking speed of elderly adults with relation to pedestrian crossings. *Physiother Theory Pract.* 2013; 29:142–49. doi: 10.3109/09593985.2012.703760
4. Dommes A, Cavallo V, Dubuisson JB, Tournier I, Vienne F. Crossing a two-way street: comparison of young and old pedestrians. *J Safety Res.* 2014; 50:27–34. doi: 10.1016/j.jsr.2014.03.008
5. Bijleveld-Uitman M, van de Port I, Kwakkel G. Is gait speed or walking distance a better predictor for community walking after stroke? *J Rehabil Med.* 2013; 45:535–40. doi: 10.2340/16501977-1147
6. Elbers RG, van Wegen EE, Verhoef J, Kwakkel G. Is gait speed a valid measure to predict community ambulation in patients with Parkinson's disease? *J Rehabil Med.* 2013; 45:370–75. doi: 10.2340/16501977-1123
7. Perry SB, Woollard J, Little S, Shroyer K. Relationships among measures of balance, gait, and community integration in people with brain injury. *J Head Trauma Rehabil.* 2014; 29:117–24. doi: 10.1097/HTR.0b013e3182864f2f
8. Kuh D, Karunanathan S, Bergman H, Cooper R. A life-course approach to healthy ageing: maintaining physical capability. *Proc Nutr Soc.* 2014; 73:237–48. doi: 10.1017/S0029665113003923
9. Studenski S, Perera S, Patel K, Rosano C, Faulkner K, Inzitari M, Brach J, Chandler J, Cawthon P, Connor EB, Nevitt M, Visser M, Kritchevsky S, et al. Gait speed and survival in older adults. *JAMA.* 2011; 305:50–58. doi: 10.1001/jama.2010.1923
10. Abellan van Kan G, Rolland Y, Andrieu S, Bauer J, Beauchet O, Bonnefoy M, Cesari M, Donini LM, Gillette Guyonnet S, Inzitari M, Nourhashemi F, Onder G, Ritz P, et al. Gait speed at usual pace as a predictor of adverse outcomes in community-dwelling older people an International Academy on Nutrition and Aging (IANA) Task Force. *J Nutr Health Aging.* 2009; 13:881–89. doi: 10.1007/s12603-009-0246-z
11. Ortega-Alonso A, Pedersen NL, Kujala UM, Sipilä S, Törmäkangas T, Kaprio J, Koskenvuo M, Rantanen T. A twin study on the heritability of walking ability among older women. *J Gerontol A Biol Sci Med Sci.* 2006; 61:1082–85. doi: 10.1093/gerona/61.10.1082
12. Pajala S, Era P, Koskenvuo M, Kaprio J, Alén M, Tolvanen A, Tiainen K, Rantanen T. Contribution of genetic and environmental factors to individual differences in maximal walking speed with and without second task in older women. *J Gerontol A Biol Sci Med Sci.* 2005; 60:1299–303. doi: 10.1093/gerona/60.10.1299
13. Christensen K, McGue M, Yashin A, Iachine I, Holm NV, Vaupel JW. Genetic and environmental influences on functional abilities in Danish twins aged 75 years and older. *J Gerontol A Biol Sci Med Sci.* 2000; 55:M446–52. doi: 10.1093/gerona/55.8.M446
14. Carmelli D, Kelly-Hayes M, Wolf PA, Swan GE, Jack LM, Reed T, Guralnik JM. The contribution of genetic influences to measures of lower-extremity function in older male twins. *J Gerontol A Biol Sci Med Sci.* 2000; 55:B49–53. doi: 10.1093/gerona/55.1.B49
15. Tiainen KM, Perola M, Kovanen VM, Sipilä S, Tuononen KA, Rikalainen K, Kauppinen MA, Widen EI, Kaprio J, Rantanen T, Kujala UM. Genetics of maximal walking speed and skeletal muscle characteristics in older women. *Twin Res Hum Genet.* 2008; 11:321–34. doi: 10.1375/twin.11.3.321
16. Ayers E, Barzilai N, Crandall JP, Milman S, Verghese J. Association of exceptional parental longevity and physical function in aging. *Age (Dordr).* 2014; 36:9677. doi: 10.1007/s11357-014-9677-5
17. Newman AB, Glynn NW, Taylor CA, Sebastiani P, Perls TT, Mayeux R, Christensen K, Zmuda JM, Barral S, Lee JH, Simonsick EM, Walston JD, Yashin AI, Hadley E. Health and function of participants in the Long Life Family Study: A comparison with other cohorts. *Aging (Albany NY).* 2011; 3:63–76. doi: 10.18632/aging.100242
18. Eynon N, Hanson ED, Lucia A, Houweling PJ, Garton F, North KN, Bishop DJ. Genes for elite power and sprint performance: ACTN3 leads the way. *Sports Med.* 2013; 43:803–17. doi: 10.1007/s40279-013-0059-4
19. Lima RM, Leite TK, Pereira RW, Rabelo HT, Roth SM,

- Oliveira RJ. ACE and ACTN3 genotypes in older women: muscular phenotypes. *Int J Sports Med.* 2011; 32:66–72. doi: 10.1055/s-0030-1267229
20. Pereira A, Costa AM, Leitão JC, Monteiro AM, Izquierdo M, Silva AJ, Bastos E, Marques MC. The influence of ACE ID and ACTN3 R577X polymorphisms on lower-extremity function in older women in response to high-speed power training. *BMC Geriatr.* 2013; 13:131. doi: 10.1186/1471-2318-13-131
  21. Holtzer R, Ozelius L, Xue X, Wang T, Lipton RB, Verghese J. Differential effects of COMT on gait and executive control in aging. *Neurobiol Aging.* 2010; 31:523–31. doi: 10.1016/j.neurobiolaging.2008.05.011
  22. Kulminski A, Ukraintseva SV, Arbeevev KG, Manton KG, Oshima J, Martin GM, Yashin AI. Association between APOE epsilon 2/epsilon 3/epsilon 4 polymorphism and disability severity in a national long-term care survey sample. *Age Ageing.* 2008; 37:288–93. doi: 10.1093/ageing/afn003
  23. Soerensen M, Dato S, Tan Q, Thinggaard M, Kleindorp R, Beekman M, Suchiman HE, Jacobsen R, McGue M, Stevnsner T, Bohr VA, de Craen AJ, Westendorp RG, et al. Evidence from case-control and longitudinal studies supports associations of genetic variation in APOE, CETP, and IL6 with human longevity. *Age (Dordr).* 2013; 35:487–500. doi: 10.1007/s11357-011-9373-7
  24. Verghese J, Holtzer R, Wang C, Katz MJ, Barzilai N, Lipton RB. Role of APOE genotype in gait decline and disability in aging. *J Gerontol A Biol Sci Med Sci.* 2013; 68:1395–401. doi: 10.1093/gerona/glt115
  25. Witte JS. Genome-wide association studies and beyond. *Annu Rev Public Health.* 2010; 31:9–20, 4, 20. doi: 10.1146/annurev.publhealth.012809.103723
  26. Adams HH, Verlinden VJ, Callisaya ML, van Duijn CM, Hofman A, Thomson R, Uitterlinden AG, Vernooij MW, van der Geest JN, Srikanth V, Ikram MA. Heritability and Genome-Wide Association Analyses of Human Gait Suggest Contribution of Common Variants. *J Gerontol A Biol Sci Med Sci.* 2015.
  27. Verghese J, Holtzer R, Lipton RB, Wang C. Quantitative gait markers and incident fall risk in older adults. *J Gerontol A Biol Sci Med Sci.* 2009; 64:896–901. doi: 10.1093/gerona/glp033
  28. Cummings SR, Studenski S, Ferrucci L. A diagnosis of dismobility—giving mobility clinical visibility: a Mobility Working Group recommendation. *JAMA.* 2014; 311:2061–62. doi: 10.1001/jama.2014.3033
  29. Verghese J, Wang C, Lipton RB, Holtzer R, Xue X. Quantitative gait dysfunction and risk of cognitive decline and dementia. *J Neurol Neurosurg Psychiatry.* 2007; 78:929–35. doi: 10.1136/jnnp.2006.106914
  30. Verghese J, Wang C, Allali G, Holtzer R, Ayers E. Modifiable Risk Factors for New-Onset Slow Gait in Older Adults. *J Am Med Dir Assoc.* 2016; 17:421–25. doi: 10.1016/j.jamda.2016.01.017
  31. Ward LD, Kellis M. HaploReg: a resource for exploring chromatin states, conservation, and regulatory motif alterations within sets of genetically linked variants. *Nucleic Acids Res.* 2012; 40:D930–34. doi: 10.1093/nar/gkr917
  32. Pruim RJ, Welch RP, Sanna S, Teslovich TM, Chines PS, Gliedt TP, Boehnke M, Abecasis GR, Willer CJ. LocusZoom: regional visualization of genome-wide association scan results. *Bioinformatics.* 2010; 26:2336–37. doi: 10.1093/bioinformatics/btq419
  33. Julià A, Ballina J, Cañete JD, Balsa A, Tornero-Molina J, Naranjo A, Alperi-López M, Erra A, Pascual-Salcedo D, Barceló P, Camps J, Marsal S. Genome-wide association study of rheumatoid arthritis in the Spanish population: KLF12 as a risk locus for rheumatoid arthritis susceptibility. *Arthritis Rheum.* 2008; 58:2275–86. doi: 10.1002/art.23623
  34. Xiong DH, Liu XG, Guo YF, Tan LJ, Wang L, Sha BY, Tang ZH, Pan F, Yang TL, Chen XD, Lei SF, Yerges LM, Zhu XZ, et al. Genome-wide association and follow-up replication studies identified ADAMTS18 and TGFBR3 as bone mass candidate genes in different ethnic groups. *Am J Hum Genet.* 2009; 84:388–98. doi: 10.1016/j.ajhg.2009.01.025
  35. Wei J, Liu CJ, Li Z. ADAMTS-18: a metalloproteinase with multiple functions. *Front Biosci (Landmark Ed).* 2014; 19:1456–67. doi: 10.2741/4296
  36. Shang Y, Das S, Rabold R, Sham JS, Mitzner W, Tang WY. Epigenetic alterations by DNA methylation in house dust mite-induced airway hyperresponsiveness. *Am J Respir Cell Mol Biol.* 2013; 49:279–87. doi: 10.1165/rcmb.2012-0403OC
  37. Aberg KA, Liu Y, Bukszár J, McClay JL, Khachane AN, Andreassen OA, Blackwood D, Corvin A, Djurovic S, Gurling H, Ophoff R, Pato CN, Pato MT, et al. A comprehensive family-based replication study of schizophrenia genes. *JAMA Psychiatry.* 2013; 70:573–81. doi: 10.1001/jamapsychiatry.2013.288
  38. Cambier L, Rassam P, Chabi B, Mezghenna K, Gross R, Eveno E, Auffray C, Wrutniak-Cabello C, Lajoix AD, Pomiès P. M19 modulates skeletal muscle differentiation and insulin secretion in pancreatic  $\beta$ -cells through modulation of respiratory chain activity. *PLoS One.* 2012; 7:e31815.

doi: 10.1371/journal.pone.0031815

39. Kamiyama M, Kobayashi M, Araki S, Iida A, Tsunoda T, Kawai K, Imanishi M, Nomura M, Babazono T, Iwamoto Y, Kashiwagi A, Kaku K, Kawamori R, et al. Polymorphisms in the 3' UTR in the neurocalcin delta gene affect mRNA stability, and confer susceptibility to diabetic nephropathy. *Hum Genet.* 2007; 122:397–407. doi: 10.1007/s00439-007-0414-3
40. van Steenbergen HW, Raychaudhuri S, Rodríguez-Rodríguez L, Rantapää-Dahlqvist S, Berglin E, Toes RE, Huizinga TW, Fernández-Gutiérrez B, Gregersen PK, van der Helm-van Mil AH. Association of valine and leucine at HLA-DRB1 position 11 with radiographic progression in rheumatoid arthritis, independent of the shared epitope alleles but not independent of anti-citrullinated protein antibodies. *Arthritis Rheumatol.* 2015; 67:877–86. doi: 10.1002/art.39018
41. Chinoy H, Lamb JA, Ollier WE, Cooper RG. An update on the immunogenetics of idiopathic inflammatory myopathies: major histocompatibility complex and beyond. *Curr Opin Rheumatol.* 2009; 21:588–93. doi: 10.1097/BOR.0b013e3283315a22
42. Zhou X, Lee JE, Arnett FC, Xiong M, Park MY, Yoo YK, Shin ES, Reveille JD, Mayes MD, Kim JH, Song R, Choi JY, Park JA, et al. HLA-DPB1 and DPB2 are genetic loci for systemic sclerosis: a genome-wide association study in Koreans with replication in North Americans. *Arthritis Rheum.* 2009; 60:3807–14. doi: 10.1002/art.24982
43. Kumar A, Rajendran V, Sethumadhavan R, Purohit R. CEP proteins: the knights of centrosome dynasty. *Protoplasma.* 2013; 250:965–83. doi: 10.1007/s00709-013-0488-9
44. Kelloniemi A, Szabo Z, Serpi R, Näpänkangas J, Ohukainen P, Tenhunen O, Kaikkonen L, Koivisto E, Bagyura Z, Kerkelä R, Leosdottir M, Hedner T, Melander O, et al. The Early-Onset Myocardial Infarction Associated PHACTR1 Gene Regulates Skeletal and Cardiac Alpha-Actin Gene Expression. *PLoS One.* 2015; 10:e0130502. doi: 10.1371/journal.pone.0130502
45. Wiezlak M, Diring J, Abella J, Mouilleron S, Way M, McDonald NQ, Treisman R. G-actin regulates the shuttling and PP1 binding of the RPEL protein Phactr1 to control actomyosin assembly. *J Cell Sci.* 2012; 125:5860–72. doi: 10.1242/jcs.112078
46. Ashrafi S, Betley JN, Comer JD, Brenner-Morton S, Bar V, Shimoda Y, Watanabe K, Peles E, Jessell TM, Kaltschmidt JA. Neuronal Ig/Caspr recognition promotes the formation of axoaxonic synapses in mouse spinal cord. *Neuron.* 2014; 81:120–29. doi: 10.1016/j.neuron.2013.10.060
47. Kan-O M, Takeya R, Abe T, Kitajima N, Nishida M, Tominaga R, Kurose H, Sumimoto H. Mammalian formin Fhod3 plays an essential role in cardiogenesis by organizing myofibrillogenesis. *Biol Open.* 2012; 1:889–96. doi: 10.1242/bio.20121370
48. Taniguchi K, Takeya R, Suetsugu S, Kan-O M, Narusawa M, Shiose A, Tominaga R, Sumimoto H. Mammalian formin fhd3 regulates actin assembly and sarcomere organization in striated muscles. *J Biol Chem.* 2009; 284:29873–81. doi: 10.1074/jbc.M109.059303
49. Chung J, Tsai S, James AH, Thames BH, Shytle S, Piedrahita JA. Lack of genomic imprinting of DNA primase, polypeptide 2 (PRIM2) in human term placenta and white blood cells. *Epigenetics.* 2012; 7:429–31. doi: 10.4161/epi.19777
50. Ko JA, Kimura Y, Matsuura K, Yamamoto H, Gondo T, Inui M. PDZRN3 (LNX3, SEMCAP3) is required for the differentiation of C2C12 myoblasts into myotubes. *J Cell Sci.* 2006; 119:5106–13. doi: 10.1242/jcs.03290
51. Lu Z, Je HS, Young P, Gross J, Lu B, Feng G. Regulation of synaptic growth and maturation by a synapse-associated E3 ubiquitin ligase at the neuromuscular junction. *J Cell Biol.* 2007; 177:1077–89. doi: 10.1083/jcb.200610060
52. Sewduth RN, Jaspard-Vinassa B, Peghaire C, Guillabert A, Franzl N, Larrieu-Lahargue F, Moreau C, Fruttiger M, Dufourcq P, Couffinhal T, Duplâa C. The ubiquitin ligase PDZRN3 is required for vascular morphogenesis through Wnt/planar cell polarity signalling. *Nat Commun.* 2014; 5:4832. doi: 10.1038/ncomms5832
53. Burgess DL, Gefrides LA, Foreman PJ, Noebels JL. A cluster of three novel Ca<sup>2+</sup> channel gamma subunit genes on chromosome 19q13.4: evolution and expression profile of the gamma subunit gene family. *Genomics.* 2001; 71:339–50. doi: 10.1006/geno.2000.6440
54. Sharp AH, Black JL 3rd, Dubel SJ, Sundarraj S, Shen JP, Yunker AM, Copeland TD, McEnery MW. Biochemical and anatomical evidence for specialized voltage-dependent calcium channel gamma isoform expression in the epileptic and ataxic mouse, stargazer. *Neuroscience.* 2001; 105:599–617. doi: 10.1016/S0306-4522(01)00220-2
55. Lionel AC, Tammimies K, Vaags AK, Rosenfeld JA, Ahn JW, Merico D, Noor A, Runke CK, Pillalamarri VK, Carter MT, Gazzellone MJ, Thiruvahindrapuram B, Fagerberg C, et al. Disruption of the ASTN2/TRIM32 locus at 9q33.1 is a risk factor in males for autism spectrum disorders, ADHD and other

- neurodevelopmental phenotypes. *Hum Mol Genet.* 2014; 23:2752–68. doi: 10.1093/hmg/ddt669
56. Lindner C, Thiagarajah S, Wilkinson JM, Panoutsopoulou K, Day-Williams AG, Cootes TF, Wallis GA, and arcOGEN Consortium. Investigation of association between hip osteoarthritis susceptibility loci and radiographic proximal femur shape. *Arthritis Rheumatol.* 2015; 67:2076–84. doi: 10.1002/art.39186
57. Kiehn O, Dougherty KJ, Hägglund M, Borgius L, Talpalar A, Restrepo CE. Probing spinal circuits controlling walking in mammals. *Biochem Biophys Res Commun.* 2010; 396:11–18. doi: 10.1016/j.bbrc.2010.02.107
58. Swarbrick MM, Evans DS, Valle MI, Favre H, Wu SH, Njajou OT, Li R, Zmuda JM, Miljkovic I, Harris TB, Kwok PY, Vaisse C, Hsueh WC. Replication and extension of association between common genetic variants in SIM1 and human adiposity. *Obesity (Silver Spring).* 2011; 19:2394–403. doi: 10.1038/oby.2011.79
59. Ingold E, Vom Berg-Maurer CM, Burckhardt CJ, Lehnher A, Rieder P, Keller PJ, Stelzer EH, Greber UF, Neuhauss SC, Gesemann M. Proper migration and axon outgrowth of zebrafish cranial motoneuron subpopulations require the cell adhesion molecule MDGA2A. *Biol Open.* 2015; 4:146–54. doi: 10.1242/bio.20148482
60. De Moor MH, Liu YJ, Boomsma DI, Li J, Hamilton JJ, Hottenga JJ, Levy S, Liu XG, Pei YF, Posthuma D, Recker RR, Sullivan PF, Wang L, et al. Genome-wide association study of exercise behavior in Dutch and American adults. *Med Sci Sports Exerc.* 2009; 41:1887–95. doi: 10.1249/MSS.0b013e3181a2f646
61. Girgenti MJ, LoTurco JJ, Maher BJ. ZNF804a regulates expression of the schizophrenia-associated genes PRSS16, COMT, PDE4B, and DRD2. *PLoS One.* 2012; 7:e32404. doi: 10.1371/journal.pone.0032404
62. Arking DE, Juntila MJ, Goyette P, Huertas-Vazquez A, Eijgelsheim M, Blom MT, Newton-Cheh C, Reinier K, Teodorescu C, Uy-Evanado A, Carter-Monroe N, Kaikkonen KS, Kortelainen ML, et al. Identification of a sudden cardiac death susceptibility locus at 2q24.2 through genome-wide association in European ancestry individuals. *PLoS Genet.* 2011; 7:e1002158. doi: 10.1371/journal.pgen.1002158
63. Thomas J, Garg ML, Smith DW. Altered expression of histone and synaptic plasticity associated genes in the hippocampus of streptozotocin-induced diabetic mice. *Metab Brain Dis.* 2013; 28:613–18. doi: 10.1007/s11011-013-9418-y
64. Lango Allen H, Estrada K, Lettre G, Berndt SI, Weedon MN, Rivadeneira F, Willer CJ, Jackson AU, Vedantam S, Raychaudhuri S, Ferreira T, Wood AR, Weyant RJ, et al. Hundreds of variants clustered in genomic loci and biological pathways affect human height. *Nature.* 2010; 467:832–38. doi: 10.1038/nature09410
65. Newman AB, Walter S, Lunetta KL, Garcia M, Karasik D, Rivadeneira F, Tiemeier H, Uitterlinden AG, Walston J, Westendorp R, Harris TB, Lumley T, van Duijn CM, et al. A Meta-analysis of Four Genome-wide Association Studies of Survival to Age 90 Years or Older: The Cohorts for Heart and Aging Research in Genome Epidemiology (CHARGE) Consortium. *J Gerontol A Biol Sci Med Sci.* Epub ahead of print.
66. Walter S, Atzmon G, Demerath E, Garcia ME, Lunetta KL, Christensen K, Arnold AM, Aspelund T, Aulchenko YS, Benjamin EJ, Christiansen L, D’Agostino RB Sr, Fitzpatrick AL, et al. *Neurobiol Aging.* 2011.
67. Guralnik JM, Ferrucci L, Pieper CF, Leveille SG, Markides KS, Ostir GV, Studenski S, Berkman LF, Wallace RB. Lower extremity function and subsequent disability: consistency across studies, predictive models, and value of gait speed alone compared with the short physical performance battery. *J Gerontol A Biol Sci Med Sci.* 2000; 55:M221–31. doi: 10.1093/gerona/55.4.M221
68. Willer CJ, Li Y, Abecasis GR. METAL: fast and efficient meta-analysis of genomewide association scans. *Bioinformatics.* 2010; 26:2190–91. doi: 10.1093/bioinformatics/btq340
69. Zhang X, Gierman HJ, Levy D, Plump A, Dobrin R, Goring HH, Curran JE, Johnson MP, Blangero J, Kim SK, O’Donnell CJ, Emilsson V, Johnson AD. Synthesis of 53 tissue and cell line expression QTL datasets reveals master eQTLs. *BMC Genomics.* 2014; 15:532. doi: 10.1186/1471-2164-15-532

## SUPPLEMENTARY MATERIAL

### SUPPLEMENTARY TEXT

#### Cohort description

##### **The Age, Gene/Environment Susceptibility-Reykjavik (AGES)**

The Reykjavik Study cohort originally comprised a random sample of 30,795 men and women born in 1907–1935 and living in Reykjavik in 1967 [1]. A total of 19381 attended, resulting in 71% recruitment rate. The study sample was divided into six groups by birth year and birth date within month. One group was designated for longitudinal follow-up and was examined in all stages. One group was designated a control group and was not included in examinations until 1991. Other groups were invited to participate in specific stages of the study. Between 2002 and 2006, the AGES-Reykjavik study re-examined 5764 survivors of the original cohort who had participated before in the Reykjavik Study. Of those, 3,219 have genomic genotypes and only 3,166 went through gait assessment that included 6 meter walk in usual pace.

##### **The Atherosclerosis Risk in Communities (ARIC)**

The ARIC study is a population-based cohort study of atherosclerosis and clinical atherosclerotic diseases [2]. At its inception (1987-1989), 15,792 men and women, including 11,478 white and 4,266 black participants were recruited from four U.S. communities: Suburban Minneapolis, Minnesota; Washington County, Maryland; Forsyth County, North Carolina; and Jackson, Mississippi. In the first 3 communities, the sample reflects the demographic composition of the community. In Jackson, only black residents were enrolled. Participants were between age 45 and 64 years at their baseline examination in 1987-1989 when blood was drawn for DNA extraction and participants consented to genetic testing. Between 2004 and 2006, participants who had undergone magnetic resonance scanning at the third ARIC visit were invited to participate in the ARIC MRI study [3]. Gait assessment was performed on 1134 ARIC participants. Time to walk 25 feet (7.62 m) at the participants' usual pace was recorded in an unobstructed corridor with a stop watch. Four hundred and forty five participants of European ancestry with genome-wide genotype data and a gait speed measurement were enrolled to this study.

##### **Baltimore Longitudinal study on Aging (BLSA)**

The Baltimore longitudinal study on Aging (BLSA) study is a population-based study aimed to evaluate

contributors of healthy aging in the older population residing predominantly in the Baltimore-Washington DC area [4]. Starting in 1958, participants are examined every one to four years depending on their age. Currently there are approximately 1100 active participants enrolled in the study. Blood samples were collected for DNA extraction, and genome-wide genotyping was completed for 1231 subjects using Illumina 550K. This analysis focused on a subset of the participants (N=334) with European ancestry with data on walking speed (6 meter walk in normal pace). The BLSA has continuing approval from the Institutional Review Board (IRB) of Medstar Research Institute.

##### **Cardiovascular Health Study (CHS)**

The CHS is a population-based cohort study of risk factors for CHD and stroke in adults  $\geq 65$  years conducted across four field centers [5]. The original predominantly Caucasian cohort of 5,201 persons was recruited in 1989-1990 from random samples of the Medicare eligibility lists; subsequently, an additional predominantly African-American cohort of 687 persons were enrolled for a total sample of 5,888. Only 3980 CHS participants who were free of CVD at baseline, consented to genetic testing, and had DNA available for genotyping were GWASed. Finally, to maintain race homogeneity we picked 3184 Caucasian with gait speed (4.6 meter walk normal pace) and genome wide assessments to participate in the current study.

##### **Framingham Heart Study (FHS)**

The FHS is a longitudinal community-based multi-generational study funded by the National Heart Lung and Blood Institute [6]. The Original cohort (Gen1) has undergone 32 biennial examinations since 1948; the Offspring cohort (Gen2) has participated in 9 exams from 1971 onwards, and the Omni group 1 cohort in 4 examinations from 1994 onwards. The Gen3 and Omni group 2 cohorts completed 2 examinations since 2002 and are currently starting the third examination cycle (April 2016). All participants undergo extensive research examinations and surviving Original cohort, Offspring and Gen 3 participants had genome-wide genotyping with the Affymetrix 500K Array Set and 50K Human Gene Focused Panel available at the start of this study [7]. At Offspring exam 8 (2005-2008) and Original cohort exam 26 (1999-2001), participants were asked to walk a 4 meter course at a normal pace while being timed with a stop watch by trained technicians. The usual pace walk was repeated and the faster of the two walks was used for analysis. Participants were excluded if under age 60. The final sample included 2384 participants (56.1% women), mean age 72.4 (SD 8.5) years (range 60 to 98) with gait speed and genomic

genotyping assessed. Informed consent was obtained at each attended exam and the Boston University Medical Center Institutional Review Board approved the protocol for all examinations.

### **Health, Aging, and Body Composition Study (HABC)**

The Health Aging and Body Composition (HABC) Study is a NIA-sponsored cohort study of the factors that contribute to incident disability and the decline in function of healthier older persons, with a particular emphasis on changes in body composition in old age. Between March 1997 and July 1998, 3075 70-79 year old community-dwelling adults (41% African-American) were recruited to participate in the Health ABC Study; characteristics of the cohort have been described elsewhere [8]. Medicare beneficiary listings were used to recruit in metropolitan areas surrounding Pittsburgh, Pennsylvania, and Memphis, Tennessee. Eligibility criteria included having no difficulty walking one-quarter of a mile, climbing 10 steps, or performing activities of daily living (transferring, bathing, dressing, and eating); no history of active treatment for cancer in the prior 3 years; and no plans to move from the area within 3 years. Genotyping was successful for 2,802 unrelated individuals (1663 Caucasians and 1139 African Americans). To reduce race bias we include only Caucasians of which 1482 have their gait speed assessed in normal pace (6 meter walk) have enrolled to the study.

### **Health and Retirement Study (HRS)**

The Health and Retirement Study (HRS) is a longitudinal survey of a representative sample of Americans over the age of 50 [9]. The current sample is over 26,000 persons in 17,000 households. Respondents are interviewed every two years about income and wealth, health and use of health services, work and retirement, and family connections. DNA was extracted from saliva collected during a face-to-face interview in the respondents' homes. These data represent respondents who provided DNA samples and signed consent forms in 2006 and 2008. Gait speed was measured only on respondents  $\geq 65$  years of age. Respondents were removed if they had gait velocities  $< 0.05$  or gait velocities  $> 5sd$  from the mean. A total of 5,073 subjects who have both a measure of gait speed (2.5 meter walk at a normal pace) and high quality imputed genomic genotypes were included in the analysis.

### **Invecchiare in Chianti (InCHIANTI)**

The InCHIANTI study is a population-based epidemiological study aimed at evaluating the factors that influence mobility in the older population living in

the Chianti region in Tuscany, Italy [10]. The details of the study have been previously reported. Briefly, 1616 residents were selected from the population registry of Greve in Chianti (a rural area: 11,709 residents with 19.3% of the population greater than 65 years of age), and Bagno a Ripoli (Antella village near Florence; 4,704 inhabitants, with 20.3% greater than 65 years of age). The participation rate was 90% ( $n=1453$ ), and the subjects ranged between 21-102 years of age. Overnight fasted blood samples were for genomic DNA extraction. Illumina Infinium HumanHap 550K SNP arrays were used for genotyping. Data from 898 subjects were used for this analysis with genetic and walking speed (4 meter walk in normal pace) data. The study protocol was approved by the Italian National Institute of Research and Care of Aging Institutional Review and Medstar Research Institute (Baltimore, MD).

### **Lothian Birth Cohorts 1921 (LBC1921) and 1936 (LBC1936)**

The Lothian Birth Cohorts include surviving participants from the Scottish Mental Surveys of 1932 or 1947 (SMS1932 and SMS1947), having been born, respectively in 1921 (LBC1921) and 1936 (LBC1936) [11-13]. The LBC1921 cohort consists of 550 relatively healthy individuals, 316 females and 234 males, assessed on cognitive and medical traits at about 79 years of age. When tested, the sample had a mean age of 79.1 years ( $SD = 0.6$ ). The LBC1936 consists of 1091 relatively healthy individuals assessed on cognitive and medical traits at about 70 years of age. At baseline the sample of 548 men and 543 women had a mean age 69.6 years ( $SD = 0.8$ ). They were all Caucasian and almost all lived independently in the Lothian region (Edinburgh city and surrounding area) of Scotland. Genotyping was performed at the Wellcome Trust Clinical Research Facility, Edinburgh. Among participants with genome-wide data and gait speed assessment (6 meter walk in normal pace), 510 (LBC1921) and 1001 (LBC1936) individuals were available for the present analysis.

### **Osteoporotic Fractures in Men Study (MrOS)**

The Osteoporotic Fractures in Men Study (MrOS) is a multi-center prospective, longitudinal, observational study of risk factors for vertebral and all non-vertebral fractures in older men, and of the sequelae of fractures in men [14, 15]. MrOS study population consists of 5,994 community dwelling, ambulatory men aged 65 years or older from six communities in the United States (Birmingham, AL; Minneapolis, MN; Palo Alto, CA; Monongahela Valley near Pittsburgh, PA; Portland, OR; and San Diego, CA). Inclusion criteria were designed to provide a study cohort that is representative

of the broad population of older men. Genomic DNA from participants in the Osteoporotic Fractures in Men (MrOS) Study was extracted from whole blood samples collected at the baseline visit using the Flexigene protocol (Qiagen, Valencia, CA, USA) at the University of Pittsburgh. Among the 5994 MrOS participants enrolled at the baseline visit, 5130 samples with whole genome genotyping data that passed QC. Of which, only 4,643 with gait speed assessed in normal pace (6 meter walk) were enrolled to the study.

### **The Religious Orders Study and Rush Memory and Aging Project (ROSMAP)**

Data came from 2 community based cohort studies of aging and dementia, the Religious Orders Study and Rush Memory and Aging Project (ROSMAP). Details about the study design have been described previously [16, 17]. Both studies were approved by the institutional review board of Rush University Medical Center. Participants were free of known dementia at enrollment and agreed to annual clinical evaluation and brain donation at the time of death. An informed consent and an Anatomic Gift Act form were obtained from each participant. The follow-up rate among the survivors exceeds 90%. The two studies are conducted by the same team of investigators and share a large common core of test batteries, which allows combined analysis of the data. Gait speed was derived by timing with a stop watch how long it took a participant to walk 8 feet (2.5m) at their usual pace [18]. DNA was extracted from whole blood, lymphocytes, or frozen postmortem brain tissue. Genotyping was performed at the Broad Institute's Center for Genotyping and the Translational Genomics Research Institute [19]. Among participants with genome-wide data and gait speed assessment 1,646 individuals were available for the present study.

### **Rotterdam Study (RSI, -II, -III)**

The Rotterdam Study is a population-based study in Rotterdam that currently investigates 14,926 inhabitants from a suburb of the city aged 45 years or over. Participants were enrolled during three recruitment phases – in 1990 (cohort 1), 2000 (cohort 2), and 2006 (cohort 3) [20, 21]. Visits to the research center are planned every 3-4 years for various medical examinations. Genotyping was successfully performed on 11,496 participants. Gait assessment was introduced in the study protocol in 2009. The Rotterdam Study has been approved by the Medical Ethics Committee of the Erasmus MC and by the Ministry of Health, Welfare and Sport of the Netherlands, implementing the Wet Bevolkingsonderzoek: ERGO (Population Studies Act: Rotterdam Study). All participants provided written informed consent to participate in the study and to

obtain information from their treating physicians. Gait assessment of 3651 subjects included 5.79-m long pressure-activated walkway (GAITRite Platinum; CIR systems, Sparta, NJ: 4.88-m active area; 120-Hz sampling rate) [22, 23]. Follow thorough exclusion the reminder 2911 subjects were genomic genotyped and imputed to the HapMap 2 reference panel.

### **Study of Osteoporotic Fractures (SOF)**

The Study of Osteoporotic Fractures (SOF) is a prospective multicenter study of risk factors for vertebral and non-vertebral fractures [24]. The cohort is comprised of 9704 community dwelling women 65 years old or older recruited from populations-based listings in four U.S. areas: Baltimore, Maryland; Minneapolis, Minnesota; Portland, Oregon; and the Monongahela Valley, Pennsylvania. Women enrolled in the study were 99% Caucasian with African American women initially excluded from the study due to their low incidence of hip fractures. The SOF participants were followed up every four months by postcard or telephone to ascertain the occurrence of falls, fractures and changes in address. To date, follow-up rates have exceeded 95% for vital status and fractures, a review of pre-operative radiographs. The SOF study recruited only women. Among the 9704 SOF participants enrolled at the baseline visit, 3625 samples with whole genome genotyping data that passed QC. Of which, only 3,441 with gait speed assessed in normal pace (6 meter walk) were enrolled to the study.

### **Tasmanian Study of Cognition and Gait (TASCOG)**

TASCOG is a study of cerebrovascular mechanisms underlying gait, balance and cognition in a population-based sample of Tasmanian people aged at least 60 years [25]. Individuals aged 60–86 years (n = 395) living in Southern Tasmania, Australia, were randomly selected from the electoral roll between 2006 and 2008 to participate in the study. Individuals were excluded if they lived in a nursing home, had a contraindication for magnetic resonance scanning (MRI) or were unable to walk without a gait aid. The response rate was 55%, and genotyping was performed at the Diamantina Institute, University of Queensland. The study was approved by the Human Health and Medical Research Ethics Committee, University of Tasmania. Genomic data and gait speed assessment (GAITRite) were available for 360 subjects that are part of this study.

### **Genetic Epidemiology Network of Arteriopathy (GENOA)**

The Genetic Epidemiology Network of Arteriopathy (GENOA) study consists of hypertensive sibships



recruited for linkage and association studies in order to identify genes that influence blood pressure and its target organ damage [26]. In the initial phase of the GENOA study (Phase I: 1996-2001), all members of sibships containing  $\geq 2$  individuals with essential hypertension clinically diagnosed before age 60 were invited to participate, including both hypertensive and normotensive siblings. In the second phase of the GENOA study (Phase II: 2000-2004), 1239 European American participants were successfully re-recruited to measure potential target organ damage due to hypertension. From 2001-2006, Phase II GENOA participants that had a sibling willing and eligible to participate underwent a neurocognitive testing battery to assess several domains of cognitive and neurological functioning, including the assessment of gait speed (N=967). Participants were excluded from this analysis if they were less than 60 years of age or gait velocities  $>1.9\text{m/s}$ . The sample includes 471 European Americans (55.0% female) with imputed genotypes and a measure of gait speed on a 25 foot (7.6 meter) walking course.

### **Leiden Longevity Study (LLS)**

The LLS has been designed to investigate biomarkers of healthy ageing and longevity [27] and has been described in detail previously [28]. It is a family-based study consisting of 1,671 offspring of 421 nonagenarian sibling pairs of Dutch descent, and their 744 partners. DNA from the LLS was extracted from white blood cells at baseline using conventional methods and genotyping was performed with Illumina Human660W-Quad and OmniExpress BeadChips (Illumina, San Diego, CA, USA). Imputation was performed with IMPUTE using the HapMap 2 reference panel [29]. Walking speed at usual pace was determined over 4 meters. Among participants with genome-wide data and gait speed assessment 235 individuals were available for the present study.

### **Osteoporotic Fractures in Men Study (MrOS Sweden (Malmö[MrOSMalmö] and Gothenburg [MrOSGBG]))**

The Osteoporotic Fractures in Men (MrOS) study is a multicenter, prospective study including older men in Sweden, Hong Kong and the United States. The MrOS Sweden study (n=3014) [30] consists of three sub-cohorts from three different Swedish cities (n=1005 in Malmö, n=1010 in Gothenburg, and n=999 in Uppsala). Study subjects (men aged 69 to 81 years) were randomly identified using national population registers. A total of 62% of the MrOS Sweden subjects who have both GAIT information and high quality imputed genomic genotypes participated in the study (n=922 in Malmö, n=960 in Gothenburg). To be eligible for the

study, the subjects had to be able to walk without assistance, provide self-reported data, and sign an informed consent. The study was approved by the ethics committees at the Universities of Gothenburg, Lund, and Uppsala. Informed consent was obtained from all study participants. Genome-wide genotyping was performed in the MrOS Gothenburg and MrOS Malmö sub cohorts. Walking speed at usual pace was determined over 6 meters. Both duration of the walk and the number of steps were measured.

### **Expression quantitative trait loci (eQTL) analysis**

A general overview of a subset of  $>50$  eQTL studies has been published [31], with specific citations for  $>100$  datasets included in the current query following here. Blood cell related eQTL studies included fresh lymphocytes [32], fresh leukocytes [33], leukocyte samples in individuals with Celiac disease [34], whole blood samples [35-54], lymphoblastoid cell lines (LCL) derived from asthmatic children [55, 56], HapMap LCL from 3 populations [57], a separate study on HapMap CEU LCL [58], additional LCL population samples [59-65], neutrophils [66, 67], CD19+ B cells [68], primary PHA-stimulated T cells [62, 65], CD4+ T cells (20833654), peripheral blood monocytes [59, 68-72], long non-coding RNAs in monocytes [73] and CD14+ monocytes before and after stimulation with LPS or interferon-gamma [74], CD11+ dendritic cells before and after Mycobacterium tuberculosis infection [75] and a separate study of dendritic cells before or after stimulation with LPS, influenza or interferon-beta [76]. Micro-RNA QTLs [77, 78], DNase-I QTLs [79], histone acetylation QTLs [80], and ribosomal occupancy QTLs [81] were also queried for LCL. Splicing QTLs [82] and micro-RNA QTLs [83] were queried in whole blood.

Non-blood cell tissue eQTLs searched included omental and subcutaneous adipose [37, 48, 54, 63, 84], visceral fat [37] stomach [84], endometrial carcinomas [85], ER+ and ER- breast cancer tumor cells [86], liver [37, 84, 87-90], osteoblasts [91], intestine [92] and normal and cancerous colon [93, 94], skeletal muscle [37, 95], breast tissue (normal and cancer) [96, 97], lung [48, 98-101], skin [48, 59, 63, 102], primary fibroblasts [62, 65, 103], sputum [104], pancreatic islet cells [105], prostate [106], rectal mucosa [107], arterial wall [37] and heart tissue from left ventricles [48, 108] and left and right atria [109]. Micro-RNA QTLs were also queried for gluteal and abdominal adipose [110] and liver [111]. Methylation QTLs were queried in pancreatic islet cells [112]. Further mRNA and micro-RNA QTLs were queried from ER+ invasive breast cancer samples, colon-, kidney renal clear-, lung- and prostate-adenocarcinoma samples [113].

Brain eQTL studies included brain cortex [36, 72, 114-116], cerebellar cortex [117], cerebellum [115, 118-121], frontal cortex [117, 119, 121], gliomas [122], hippocampus [117, 119], inferior olivary nucleus (from medulla) [117], intralobular white matter [117], occipital cortex [117], parietal lobe [120], pons [121], pre-frontal cortex [118, 119, 123, 124], putamen (at the level of anterior commissure) [117], substantia nigra [117], temporal cortex [115, 117, 119, 121], thalamus [119] and visual cortex [118].

Additional eQTL data was integrated from online sources including ScanDB, the Broad Institute GTEx Portal, and the Pritchard Lab (eqtl.uchicago.edu). Cerebellum, parietal lobe and liver eQTL data was downloaded from ScanDB and cis-eQTLs were limited to those with  $P < 1.0E-6$  and trans-eQTLs with  $P < 5.0E-8$ . Results for GTEx Analysis V4 for 13 tissues were downloaded from the GTEx Portal and then additionally filtered as described below [www.gtexportal.org](http://www.gtexportal.org): thyroid, leg skin (sun exposed), tibial nerve, aortic artery, tibial artery, skeletal muscle, esophagus mucosa, esophagus muscularis, lung, heart (left ventricle), stomach, whole blood, and subcutaneous adipose [48]. Splicing QTL (sQTL) results generated with sQTLseeker with false discovery rate  $P \leq 0.05$  were retained. For all gene-level eQTLs, if at least 1 SNP passed the tissue-specific empirical threshold in GTEx, the best SNP for that eQTL was always retained. All gene-level eQTL SNPs with  $P < 1.67E-11$  were also retained, reflecting a global threshold correction of  $P = 0.05 / (30,000 \text{ genes} \times 1,000,000 \text{ tests})$ .

## **Analysis Plan**

### 1) Analysis Plan:

- a. Imputation: all cohorts have imputed to HapMap, using either BimBam or MACH.
- b. Cohort-specific analyses
  - i. Multiple linear regression of imputed SNPs on gait speed (m/s)
  - ii. All analyses will be sex-combined
  - iii. SNPs will be coded as additive model as a count of the number of variant alleles present (1 degree of freedom).
  - iv. Covariate adjustment:
    1. age (at time of exam)
    2. gender
    3. study site (for cohorts with multiple sites)
    4. principal components that control for population stratification (in some cohorts)
    5. height
    6. Osteoarthritis\*
- c. Meta-analysis: Inverse variance weighted meta-analysis to be performed on summary statistics of

imputed data. Meta-analysis of gait speed outcome will be performed using a fixed effects model of beta estimates and standard errors from each cohort.

i. Significance threshold: A threshold of p-value  $5 \times 10^{-8}$  will be used to determine genome-wide statistical significance.

\*Cohorts with Osteoarthritis measurement will add a variable yes/no converted to 1/0 for any sort of osteoarthritis and will provide two analyses one with and one without this variable.

– Cohorts without Osteoarthritis measurement will stick to the original analytic plan.

– Cohorts with Osteoarthritis measurement will provide:

I. Analysis which includes everyone with or without osteoarthritis.

II. Analysis only for the one without this variable.

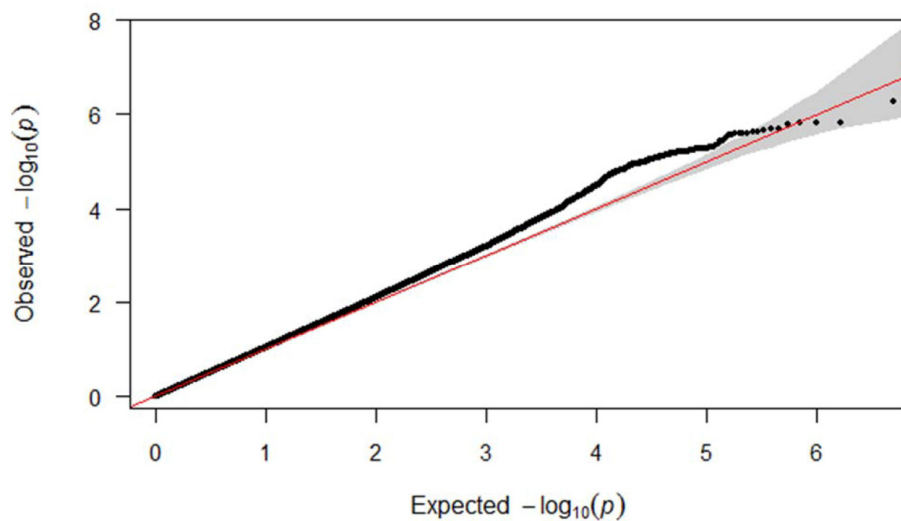
d. Cohorts with mixed ethnicity will be stratified by race. Meta analysis will test both possibilities with the additional race as a separate cohort and without.

2) Data format: The data delivery format for the meta-analysis will be according to the CHARGE protocol for file sharing.

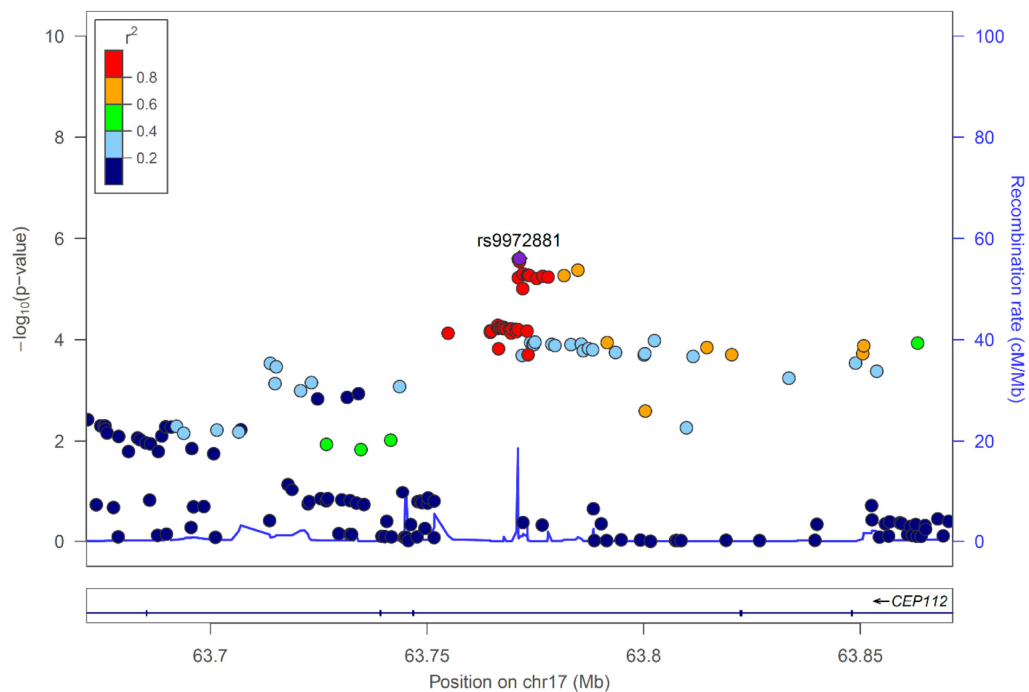
a. ShareSpaces, a secure web-based file-sharing system implemented by the University of Washington's Catalyst computing group, will be used.

b. The following variables should be included when sharing imputed results for meta-analysis (Table 11).

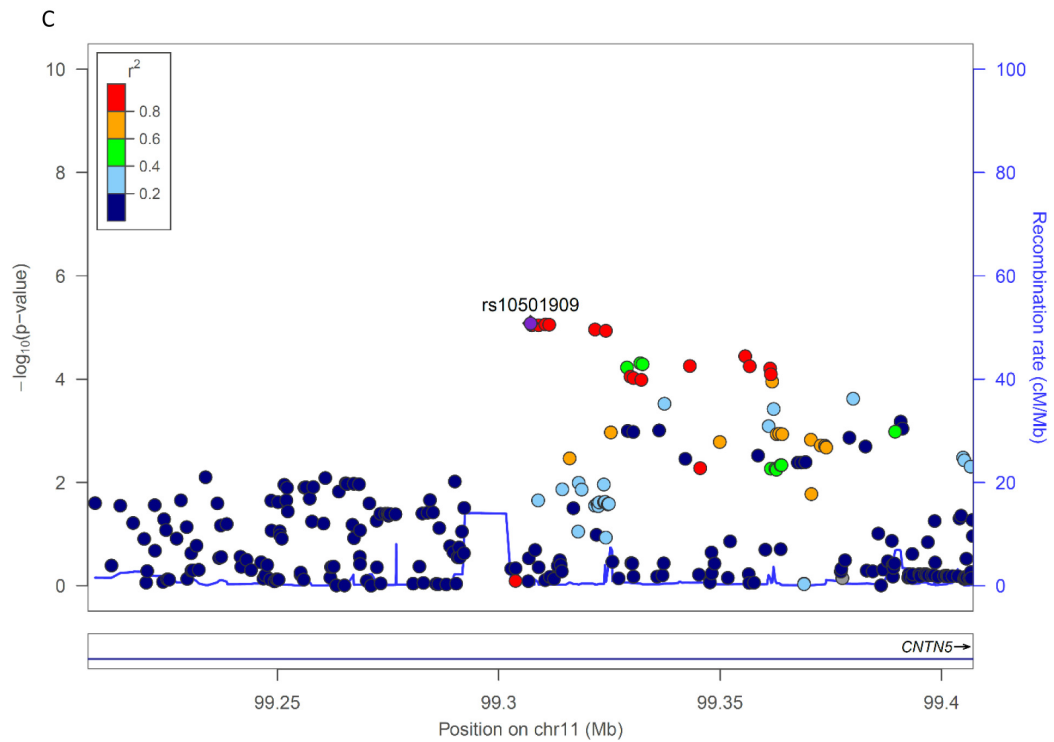
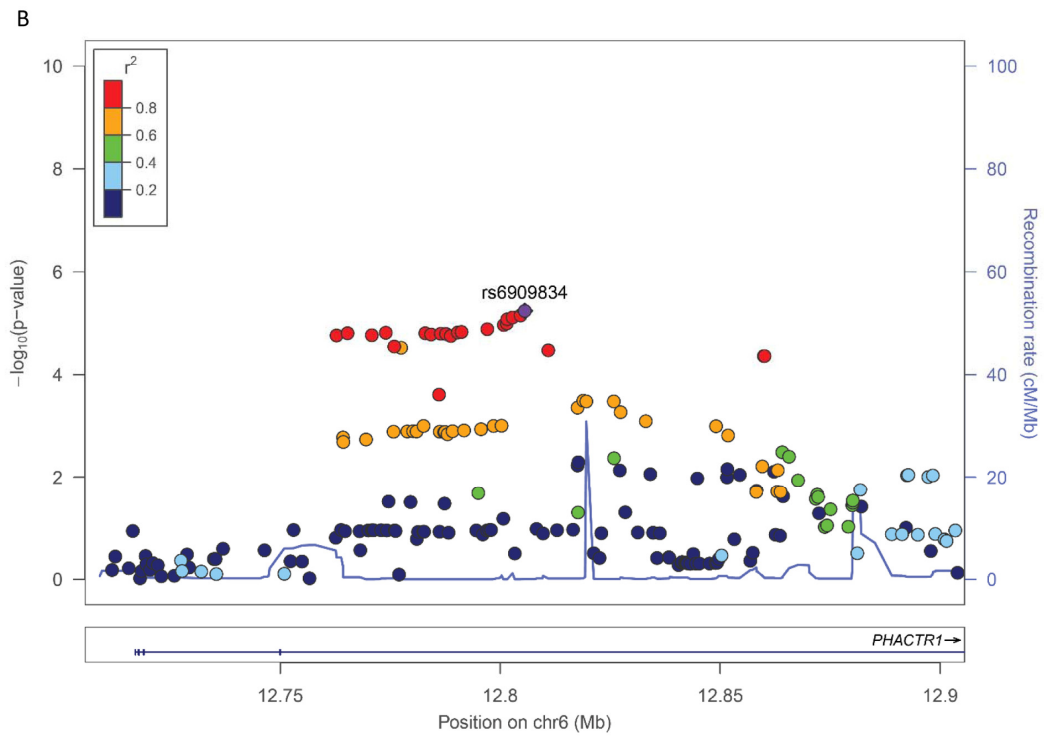
SUPPLEMENTARY FIGURES

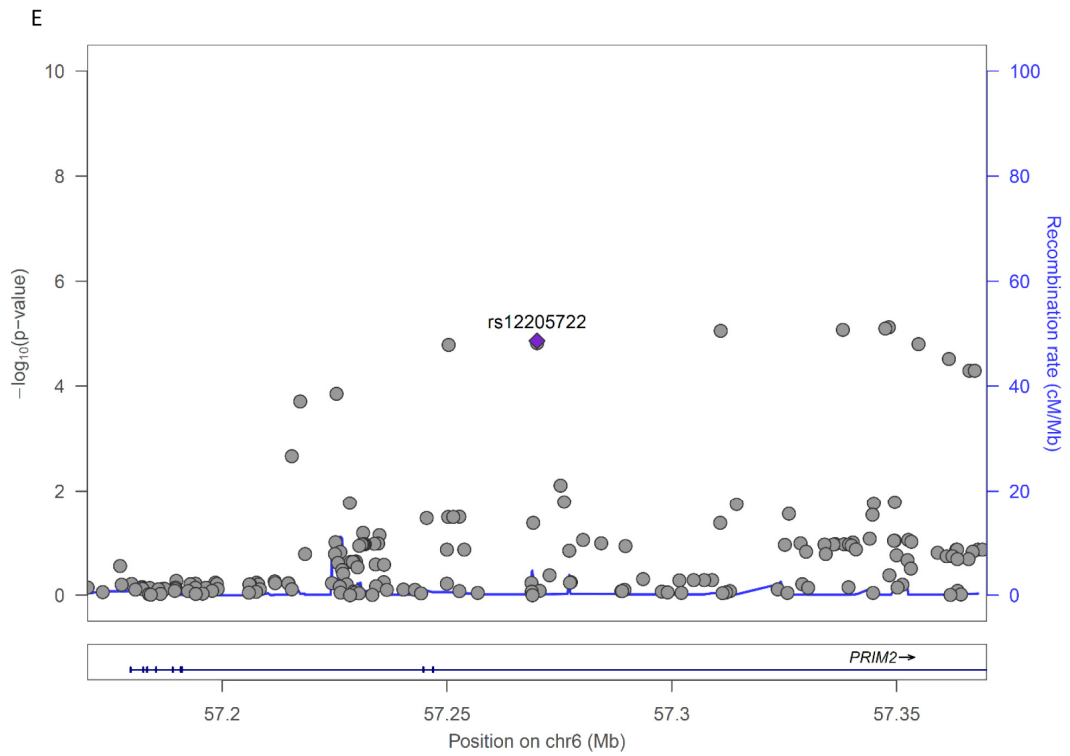
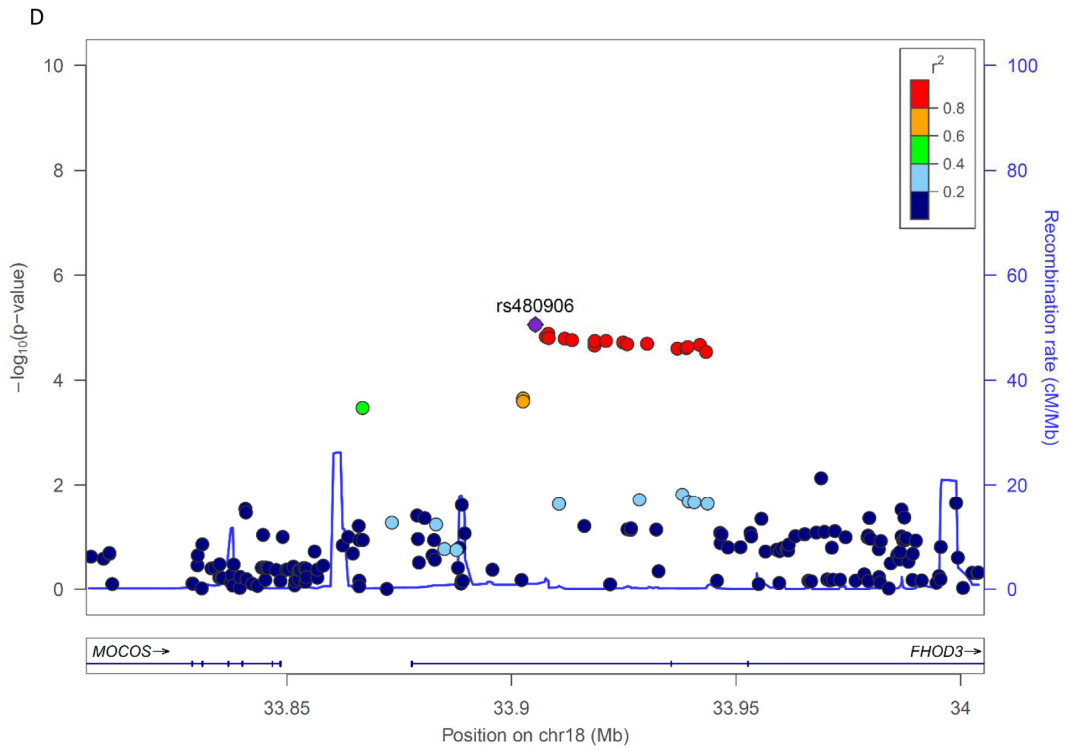


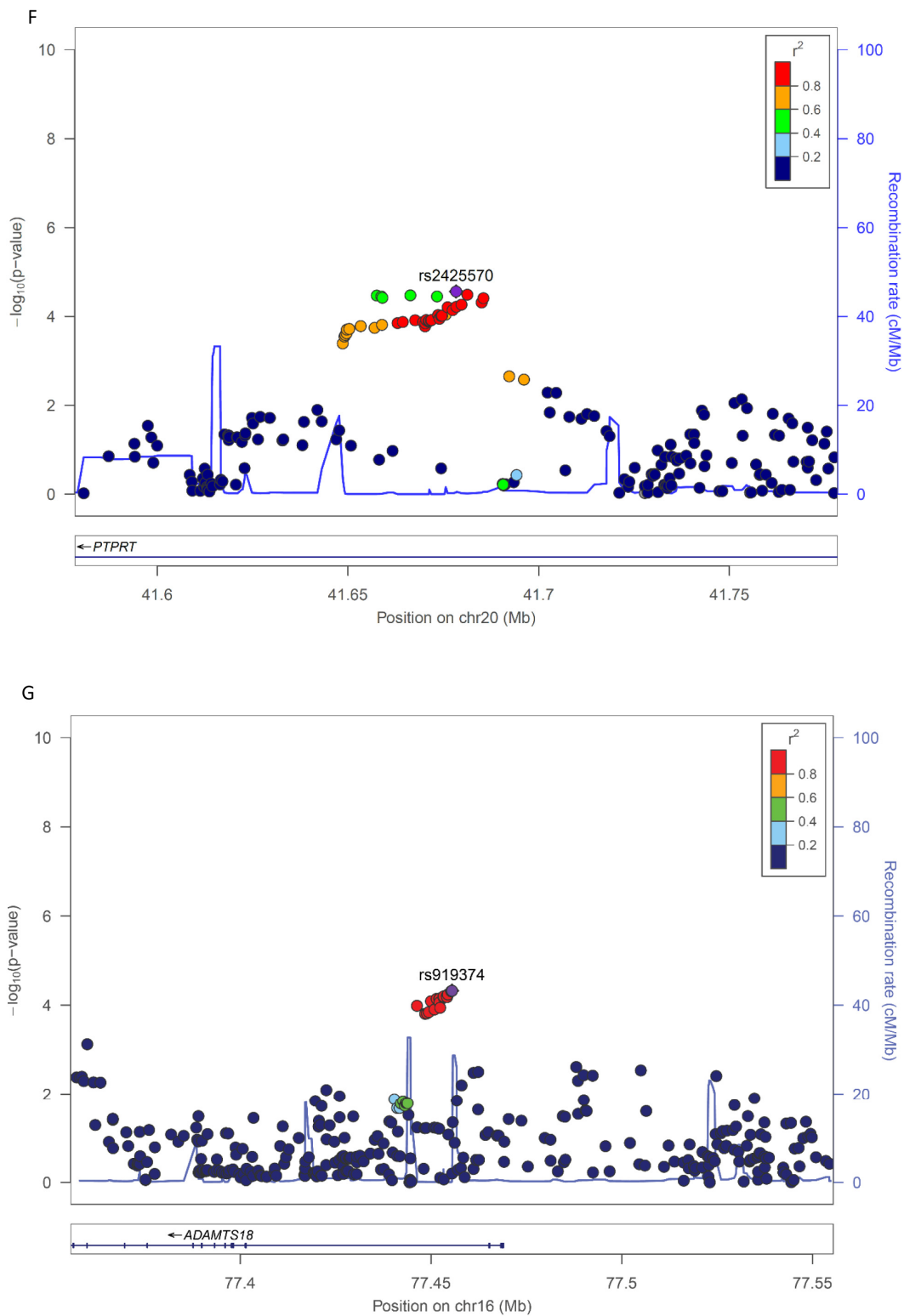
**Supplementary Figure 1.** Q-Q plot of expected (red line) vs. observed (black dot line)  $-\log_{10}$  p-values for meta-analysis of genome-wide association studies of gait speed.



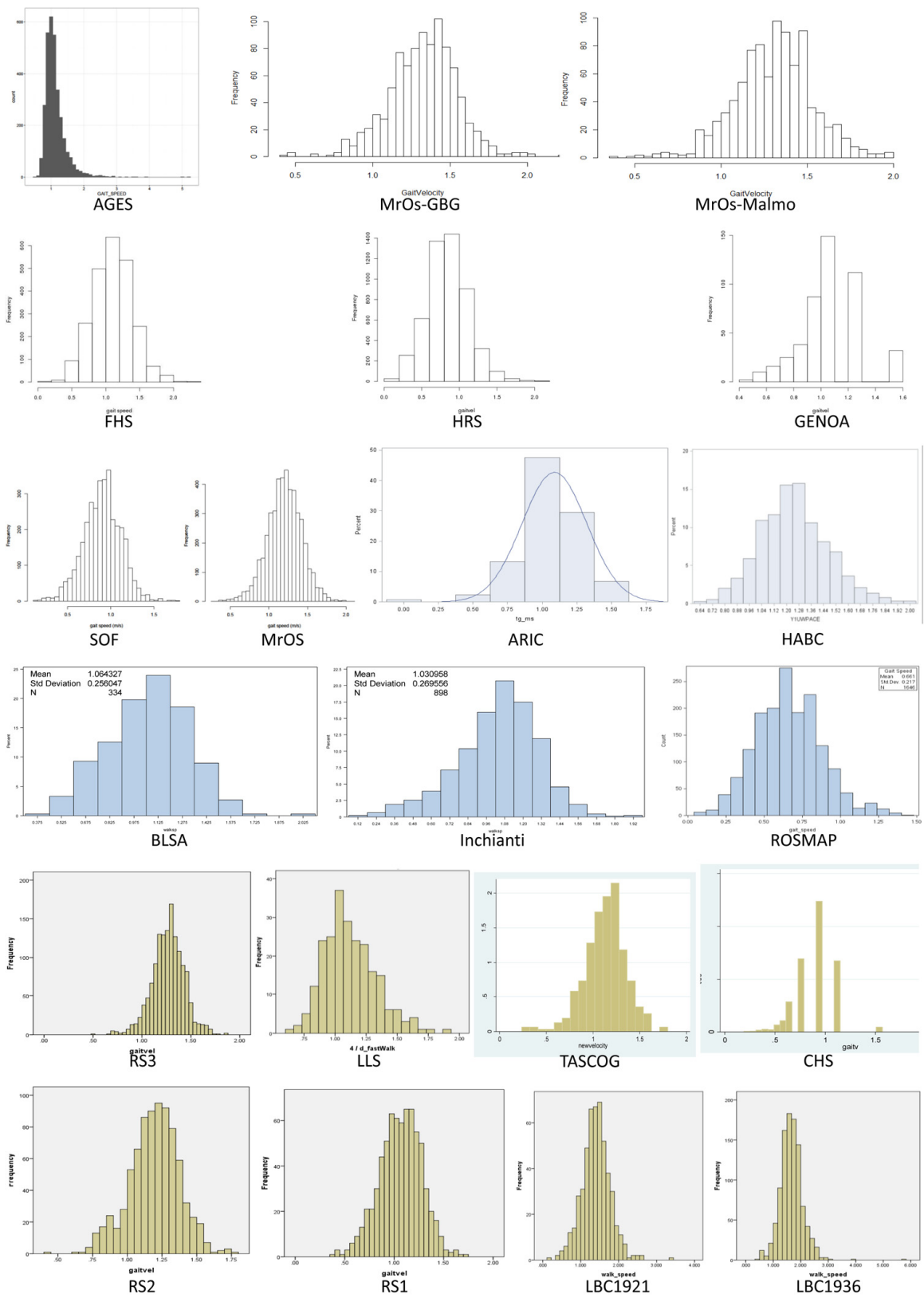
A







**Supplementary Figure 2.** LocusZoom plots for the genes (7 genes) with most suggestive variants (not listed in the top tens) associated with gait speed of the combined analysis (A) *CEP112*; (B) *PHACTR1*, (C) *CNTN5*, (D) *FHOD3*, (E) *PRIM2*, (F) *PTPRT*, (G) *ADAMTS18*. In each plot, the  $-\log_{10}$  of  $p$  values are on the left  $y$ -axis; the SNP genomic position (HG19) on the  $x$ -axis; the estimated recombination rate from 1000 genomes Nov. 2014 EUR are on the right  $y$ -axis and plotted in blue. The most significant SNP is in purple diamond and plotted using the  $p$  value attained from the meta-analysis. SNPs are colored to reflect linkage disequilibrium (LD) with the most significant SNP in red (pairwise  $r^2$  from 1000 genomes Nov. 2014 EUR). Gene annotations are from the SeattleSeqAnnotation141.



**Supplementary Figure 3.** Gait speed values distribution within cohorts.

## SUPPLEMENTARY TABLES

Please browse links in Full Text version to see Supplementary Tables S1-S11.

## SUPPLEMENTARY REFERENCES

1. Harris TB, Launer LJ, Eiriksdottir G, Kjartansson O, Jonsson PV, Sigurdsson G, Thorgeirsson G, Aspelund T, Garcia ME, Cotch MF, Hoffman HJ, Gudnason V. Age, Gene/Environment Susceptibility-Reykjavik Study: multidisciplinary applied phenomics. *Am J Epidemiol.* 2007; 165:1076–87. doi: 10.1093/aje/kwk115
2. The Atherosclerosis Risk in Communities (ARIC) Study: design and objectives. The ARIC investigators. *Am J Epidemiol.* 1989; 129:687–702. doi: 10.1093/oxfordjournals.aje.a115184
3. D. S. Knopman, T. H. Mosley, D. J. Catellier, L. H. Coker, M. R. I. S. Atherosclerosis Risk in Communities Study Brain, Fourteen-year longitudinal study of vascular risk factors, APOE genotype, and cognition: the ARIC MRI Study. *Alzheimer's & dementia: the journal* 5, 207-214 (2009).
4. Stone JL, Norris AH. Activities and attitudes of participants in the Baltimore longitudinal study. *J Gerontol.* 1966; 21:575–80. doi: 10.1093/geronj/21.4.575
5. Fried LP, Borhani NO, Enright P, Furberg CD, Gardin JM, Kronmal RA, Kuller LH, Manolio TA, Mittelmark MB, Newman A, O'Leary DH, Psaty B, Rautaharju P, et al. The Cardiovascular Health Study: design and rationale. *Ann Epidemiol.* 1991; 1:263–76. doi: 10.1016/1047-2797(91)90005-W
6. Splansky GL, Corey D, Yang Q, Atwood LD, Cupples LA, Benjamin EJ, D'Agostino RB Sr, Fox CS, Larson MG, Murabito JM, O'Donnell CJ, Vasan RS, Wolf PA, Levy D. The Third Generation Cohort of the National Heart, Lung, and Blood Institute's Framingham Heart Study: design, recruitment, and initial examination. *Am J Epidemiol.* 2007; 165:1328–35. doi: 10.1093/aje/kwm021
7. Benjamin IJ et al. American Heart Association Cardiovascular Genome-Phenome Study *Circulation.* 2014.
8. Harris TB, Visser M, Everhart J, Cauley J, Tyllavsky F, Fuerst T, Zamboni M, Taaffe D, Resnick HE, Scherzinger A, Nevitt M. Waist circumference and sagittal diameter reflect total body fat better than visceral fat in older men and women. *The Health, Aging and Body Composition Study. Ann N Y Acad Sci.* 2000; 904:462–73. doi: 10.1111/j.1749-6632.2000.tb06501.x
9. Sonnega A, Faul JD, Ofstedal MB, Langa KM, Phillips JW, Weir DR. Cohort Profile: the Health and Retirement Study (HRS). *Int J Epidemiol.* 2014; 43:576–85. doi: 10.1093/ije/dyu067
10. Cesari M, Pahor M, Bartali B, Cherubini A, Penninx BW, Williams GR, Atkinson H, Martin A, Guralnik JM, Ferrucci L. Antioxidants and physical performance in elderly persons: the Invecchiare in Chianti (InCHIANTI) study. *Am J Clin Nutr.* 2004; 79:289–94.
11. Deary IJ, Whiteman MC, Starr JM, Whalley LJ, Fox HC. The impact of childhood intelligence on later life: following up the Scottish mental surveys of 1932 and 1947. *J Pers Soc Psychol.* 2004; 86:130–47. doi: 10.1037/0022-3514.86.1.130
12. Deary IJ, Gow AJ, Taylor MD, Corley J, Brett C, Wilson V, Campbell H, Whalley LJ, Visscher PM, Porteous DJ, Starr JM. The Lothian Birth Cohort 1936: a study to examine influences on cognitive ageing from age 11 to age 70 and beyond. *BMC Geriatr.* 2007; 7:28. doi: 10.1186/1471-2318-7-28
13. Deary IJ, Gow AJ, Pattie A, Starr JM. Cohort profile: the Lothian Birth Cohorts of 1921 and 1936. *Int J Epidemiol.* 2012; 41:1576–84. doi: 10.1093/ije/dyr197
14. Blank JB, Cawthon PM, Carrion-Petersen ML, Harper L, Johnson JP, Mitson E, Delay RR. Overview of recruitment for the osteoporotic fractures in men study (MrOS). *Contemp Clin Trials.* 2005; 26:557–68. doi: 10.1016/j.cct.2005.05.005
15. Orwoll E, Blank JB, Barrett-Connor E, Cauley J, Cummings S, Ensrud K, Lewis C, Cawthon PM, Marcus R, Marshall LM, McGowan J, Phipps K, Sherman S, et al. Design and baseline characteristics of the osteoporotic fractures in men (MrOS) study--a large observational study of the determinants of fracture in older men. *Contemp Clin Trials.* 2005; 26:569–85. doi: 10.1016/j.cct.2005.05.006
16. Bennett DA, Schneider JA, Arvanitakis Z, Wilson RS. Overview and findings from the religious orders study. *Curr Alzheimer Res.* 2012; 9:628–45. doi: 10.2174/156720512801322573
17. Bennett DA, Schneider JA, Buchman AS, Barnes LL, Boyle PA, Wilson RS. Overview and findings from the rush Memory and Aging Project. *Curr Alzheimer Res.* 2012; 9:646–63. doi: 10.2174/156720512801322663
18. Shah RC, Buchman AS, Boyle PA, Leurgans SE, Wilson RS, Andersson GB, Bennett DA. Musculoskeletal pain is associated with incident mobility disability in community-dwelling elders. *J Gerontol A Biol Sci Med Sci.* 2011; 66:82–88.



doi: 10.1093/gerona/glq187

19. Shulman JM, Chen K, Keenan BT, Chibnik LB, Fleisher A, Thiyyagura P, Roontiva A, McCabe C, Patsopoulos NA, Corneveaux JJ, Yu L, Huentelman MJ, Evans DA, et al. Genetic susceptibility for Alzheimer disease neuritic plaque pathology. *JAMA Neurol.* 2013; 70:1150–57. doi: 10.1001/jamaneurol.2013.2815
20. Hofman A, Breteler MM, van Duijn CM, Janssen HL, Krestin GP, Kuipers EJ, Stricker BH, Tiemeier H, Uitterlinden AG, Vingerling JR, Witteman JC. The Rotterdam Study: 2010 objectives and design update. *Eur J Epidemiol.* 2009; 24:553–72. doi: 10.1007/s10654-009-9386-z
21. Hofman A, Brusselle GG, Darwish Murad S, van Duijn CM, Franco OH, Goedegebure A, Ikram MA, Klaver CC, Nijsten TE, Peeters RP, Stricker BH, Tiemeier HW, Uitterlinden AG, Vernooij MW. The Rotterdam Study: 2016 objectives and design update. *Eur J Epidemiol.* 2015; 30:661–708. doi: 10.1007/s10654-015-0082-x
22. Verlinden VJ, van der Geest JN, Hoogendam YY, Hofman A, Breteler MM, Ikram MA. Gait patterns in a community-dwelling population aged 50 years and older. *Gait Posture.* 2013; 37:500–05. doi: 10.1016/j.gaitpost.2012.09.005
23. Verlinden VJ, van der Geest JN, Hofman A, Ikram MA. Cognition and gait show a distinct pattern of association in the general population. *Alzheimers Dement.* 2013.
24. Cummings SR, Nevitt MC, Browner WS, Stone K, Fox KM, Ensrud KE, Cauley J, Black D, Vogt TM, and Study of Osteoporotic Fractures Research Group. Risk factors for hip fracture in white women. *N Engl J Med.* 1995; 332:767–73. doi: 10.1056/NEJM199503233321202
25. Callisaya ML, Blizzard L, McGinley JL, Srikanth VK. Risk of falls in older people during fast-walking--the TASCOG study. *Gait Posture.* 2012; 36:510–15. doi: 10.1016/j.gaitpost.2012.05.003
26. Daniels PR, Kardia SL, Hanis CL, Brown CA, Hutchinson R, Boerwinkle E, Turner ST, and Genetic Epidemiology Network of Arteriopathy study. Familial aggregation of hypertension treatment and control in the Genetic Epidemiology Network of Arteriopathy (GENOA) study. *Am J Med.* 2004; 116:676–81. doi: 10.1016/j.amjmed.2003.12.032
27. Westendorp RG, van Heemst D, Rozing MP, Frölich M, Mooijaart SP, Blauw GJ, Beekman M, Heijmans BT, de Craen AJ, Slagboom PE, and Leiden Longevity Study Group. Nonagenarian siblings and their offspring display lower risk of mortality and morbidity than sporadic nonagenarians: The Leiden Longevity Study. *J Am Geriatr Soc.* 2009; 57:1634–37. doi: 10.1111/j.1532-5415.2009.02381.x
28. Schoenmaker M, de Craen AJ, de Meijer PH, Beekman M, Blauw GJ, Slagboom PE, Westendorp RG. Evidence of genetic enrichment for exceptional survival using a family approach: the Leiden Longevity Study. *Eur J Hum Genet.* 2006; 14:79–84.
29. Deelen J, Beekman M, Uh HW, Broer L, Ayers KL, Tan Q, Kamatani Y, Bennet AM, Tamm R, Trompet S, Guðbjartsson DF, Flachsbarth F, Rose G, et al. Genome-wide association meta-analysis of human longevity identifies a novel locus conferring survival beyond 90 years of age. *Hum Mol Genet.* 2014; 23:4420–32. doi: 10.1093/hmg/ddu139
30. Ribom EL, Grundberg E, Mallmin H, Ohlsson C, Lorenzon M, Orwoll E, Holmberg AH, Mellström D, Ljunggren O, Karlsson MK. Estimation of physical performance and measurements of habitual physical activity may capture men with high risk to fall--data from the Mr Os Sweden cohort. *Arch Gerontol Geriatr.* 2009; 49:e72–76. doi: 10.1016/j.archger.2008.09.003
31. Zhang X, Gierman HJ, Levy D, Plump A, Dobrin R, Goring HH, Curran JE, Johnson MP, Blangero J, Kim SK, O'Donnell CJ, Emilsson V, Johnson AD. Synthesis of 53 tissue and cell line expression QTL datasets reveals master eQTLs. *BMC Genomics.* 2014; 15:532. doi: 10.1186/1471-2164-15-532
32. Göring HH, Curran JE, Johnson MP, Dyer TD, Charlesworth J, Cole SA, Jowett JB, Abraham LJ, Rainwater DL, Comuzzie AG, Mahaney MC, Almasy L, MacCluer JW, et al. Discovery of expression QTLs using large-scale transcriptional profiling in human lymphocytes. *Nat Genet.* 2007; 39:1208–16. doi: 10.1038/ng2119
33. Idaghdour Y, Czika W, Shianna KV, Lee SH, Visscher PM, Martin HC, Miclaus K, Jadallah SJ, Goldstein DB, Wolfinger RD, Gibson G. Geographical genomics of human leukocyte gene expression variation in southern Morocco. *Nat Genet.* 2010; 42:62–67. doi: 10.1038/ng.495
34. Heap GA, Trynka G, Jansen RC, Bruinenberg M, Swertz MA, Dinesen LC, Hunt KA, Wijmenga C, Vanheel DA, Franke L. Complex nature of SNP genotype effects on gene expression in primary human leucocytes. *BMC Med Genomics.* 2009; 2:1. doi: 10.1186/1755-8794-2-1
35. Chen W, Brehm JM, Lin J, Wang T, Forno E, Acosta-Pérez E, Boutaoui N, Canino G, Celedón JC. Expression quantitative trait loci (eQTL) mapping in Puerto Rican children. *PLoS One.* 2015; 10:e0122464. doi: 10.1371/journal.pone.0122464

36. Lock EF, Soldano KL, Garrett ME, Cope H, Markunas CA, Fuchs H, Grant G, Dunson DB, Gregory SG, Ashley-Koch AE. Joint eQTL assessment of whole blood and dura mater tissue from individuals with Chiari type I malformation. *BMC Genomics*. 2015; 16:11. doi: 10.1186/s12864-014-1211-8
37. Foroughi Asl H, Talukdar HA, Kindt AS, Jain RK, Ermel R, Ruusalepp A, Nguyen KD, Dobrin R, Reilly DF, Schunkert H, Samani NJ, Braenne I, Erdmann J, et al, and CARDIoGRAM Consortium. Expression quantitative trait Loci acting across multiple tissues are enriched in inherited risk for coronary artery disease. *Circ Cardiovasc Genet*. 2015; 8:305–15. doi: 10.1161/CIRCGENETICS.114.000640
38. Pierce BL, Tong L, Chen LS, Rahaman R, Argos M, Jasmine F, Roy S, Paul-Brutus R, Westra HJ, Franke L, Esko T, Zaman R, Islam T, et al. Mediation analysis demonstrates that trans-eQTLs are often explained by cis-mediation: a genome-wide analysis among 1,800 South Asians. *PLoS Genet*. 2014; 10:e1004818. doi: 10.1371/journal.pgen.1004818
39. Narahara M, Higasa K, Nakamura S, Tabara Y, Kawaguchi T, Ishii M, Matsubara K, Matsuda F, Yamada R. Large-scale East-Asian eQTL mapping reveals novel candidate genes for LD mapping and the genomic landscape of transcriptional effects of sequence variants. *PLoS One*. 2014; 9:e100924. doi: 10.1371/journal.pone.0100924
40. Schramm K, Marzi C, Schurmann C, Carstensen M, Reinmaa E, Biffar R, Eckstein G, Gieger C, Grabe HJ, Homuth G, Kastenmüller G, Mägi R, Metspalu A, et al. Mapping the genetic architecture of gene regulation in whole blood. *PLoS One*. 2014; 9:e93844. doi: 10.1371/journal.pone.0093844
41. Wright FA, Sullivan PF, Brooks AI, Zou F, Sun W, Xia K, Madar V, Jansen R, Chung W, Zhou YH, Abdellaoui A, Batista S, Butler C, et al. Heritability and genomics of gene expression in peripheral blood. *Nat Genet*. 2014; 46:430–37. doi: 10.1038/ng.2951
42. Quinlan J, Idaghdour Y, Goulet JP, Gbeha E, de Malliard T, Bruat V, Grenier JC, Gomez S, Sanni A, Rahimy MC, Awadalla P. Genomic architecture of sickle cell disease in West African children. *Front Genet*. 2014; 5:26. doi: 10.3389/fgene.2014.00026
43. Benton MC, Lea RA, Macartney-Coxson D, Carless MA, Göring HH, Bellis C, Hanna M, Eccles D, Chambers GK, Curran JE, Harper JL, Blangero J, Griffiths LR. Mapping eQTLs in the Norfolk Island genetic isolate identifies candidate genes for CVD risk traits. *Am J Hum Genet*. 2013; 93:1087–99. doi: 10.1016/j.ajhg.2013.11.004
44. Battle A, Mostafavi S, Zhu X, Potash JB, Weissman MM, McCormick C, Haudenschild CD, Beckman KB, Shi J, Mei R, Urban AE, Montgomery SB, Levinson DF, Koller D. Characterizing the genetic basis of transcriptome diversity through RNA-sequencing of 922 individuals. *Genome Res*. 2014; 24:14–24. doi: 10.1101/gr.155192.113
45. Westra HJ, Peters MJ, Esko T, Yaghootkar H, Schurmann C, Kettunen J, Christiansen MW, Fairfax BP, Schramm K, Powell JE, Zhernakova A, Zhernakova DV, Veldink JH, et al. Systematic identification of trans eQTLs as putative drivers of known disease associations. *Nat Genet*. 2013; 45:1238–43. doi: 10.1038/ng.2756
46. Landmark-Høyvik H, Dumeaux V, Nebdal D, Lund E, Tost J, Kamatani Y, Renault V, Børresen-Dale AL, Kristensen V, Edvardsen H. Genome-wide association study in breast cancer survivors reveals SNPs associated with gene expression of genes belonging to MHC class I and II. *Genomics*. 2013; 102:278–87. doi: 10.1016/j.ygeno.2013.07.006
47. Zhernakova DV, de Klerk E, Westra HJ, Mastrokolias A, Amini S, Ariyurek Y, Jansen R, Penninx BW, Hottenga JJ, Willemsen G, de Geus EJ, Boomsma DI, Veldink JH, et al. DeepSAGE reveals genetic variants associated with alternative polyadenylation and expression of coding and non-coding transcripts. *PLoS Genet*. 2013; 9:e1003594. doi: 10.1371/journal.pgen.1003594
48. Consortium GT, and GTEx Consortium. (GTEx) project. *Nat Genet*. 2013; 45:580–85. doi: 10.1038/ng.2653
49. Sasayama D, Hori H, Nakamura S, Miyata R, Teraishi T, Hattori K, Ota M, Yamamoto N, Higuchi T, Amano N, Kunugi H. Identification of single nucleotide polymorphisms regulating peripheral blood mRNA expression with genome-wide significance: an eQTL study in the Japanese population. *PLoS One*. 2013; 8:e54967. doi: 10.1371/journal.pone.0054967
50. van Eijk KR, de Jong S, Boks MP, Langeveld T, Colas F, Veldink JH, de Kovel CG, Janson E, Strengman E, Langfelder P, Kahn RS, van den Berg LH, Horvath S, Ophoff RA. Genetic analysis of DNA methylation and gene expression levels in whole blood of healthy human subjects. *BMC Genomics*. 2012; 13:636. doi: 10.1186/1471-2164-13-636
51. Mehta D, Heim K, Herder C, Carstensen M, Eckstein G, Schurmann C, Homuth G, Nauck M, Völker U, Roden M, Illig T, Gieger C, Meitinger T, Prokisch H. Impact of common regulatory single-nucleotide variants on gene expression profiles in whole blood. *Eur J Hum Genet*. 2013; 21:48–54. doi: 10.1038/ejhg.2012.106

52. Powell JE, Henders AK, McRae AF, Caracella A, Smith S, Wright MJ, Whitfield JB, Dermitzakis ET, Martin NG, Visscher PM, Montgomery GW. The Brisbane Systems Genetics Study: genetical genomics meets complex trait genetics. *PLoS One*. 2012; 7:e35430. doi: 10.1371/journal.pone.0035430
53. Fehrmann RS, Jansen RC, Veldink JH, Westra HJ, Arends D, Bonder MJ, Fu J, Deelen P, Groen HJ, Smolonska A, Weersma RK, Hofstra RM, Buurman WA, et al. Trans-eQTLs reveal that independent genetic variants associated with a complex phenotype converge on intermediate genes, with a major role for the HLA. *PLoS Genet*. 2011; 7:e1002197. doi: 10.1371/journal.pgen.1002197
54. Emilsson V, Thorleifsson G, Zhang B, Leonardson AS, Zink F, Zhu J, Carlson S, Helgason A, Walters GB, Gunnarsdottir S, Mouy M, Steinhorsdottir V, Eiriksdottir GH, et al. Genetics of gene expression and its effect on disease. *Nature*. 2008; 452:423–28. doi: 10.1038/nature06758
55. Liang L, Morar N, Dixon AL, Lathrop GM, Abecasis GR, Moffatt MF, Cookson WO. A cross-platform analysis of 14,177 expression quantitative trait loci derived from lymphoblastoid cell lines. *Genome Res*. 2013; 23:716–26. doi: 10.1101/gr.142521.112
56. Dixon AL, Liang L, Moffatt MF, Chen W, Heath S, Wong KC, Taylor J, Burnett E, Gut I, Farrall M, Lathrop GM, Abecasis GR, Cookson WO. A genome-wide association study of global gene expression. *Nat Genet*. 2007; 39:1202–07. doi: 10.1038/ng2109
57. Stranger BE, Nica AC, Forrest MS, Dimas A, Bird CP, Beazley C, Ingle CE, Dunning M, Flicek P, Koller D, Montgomery S, Tavaré S, Deloukas P, Dermitzakis ET. Population genomics of human gene expression. *Nat Genet*. 2007; 39:1217–24. doi: 10.1038/ng2142
58. Kwan T, Benovoy D, Dias C, Gurd S, Provencher C, Beaulieu P, Hudson TJ, Sladek R, Majewski J. Genome-wide analysis of transcript isoform variation in humans. *Nat Genet*. 2008; 40:225–31. doi: 10.1038/ng.2007.57
59. Huang J, Chen J, Esparza J, Ding J, Elder JT, Abecasis GR, Lee YA, Mark Lathrop G, Moffatt MF, Cookson WO, Liang L. eQTL mapping identifies insertion- and deletion-specific eQTLs in multiple tissues. *Nat Commun*. 2015; 6:6821. doi: 10.1038/ncomms7821
60. Bryois J, Buil A, Evans DM, Kemp JP, Montgomery SB, Conrad DF, Ho KM, Ring S, Hurles M, Deloukas P, Davey Smith G, Dermitzakis ET. Cis and trans effects of human genomic variants on gene expression. *PLoS Genet*. 2014; 10:e1004461. doi: 10.1371/journal.pgen.1004461
61. Mangravite LM, Engelhardt BE, Medina MW, Smith JD, Brown CD, Chasman DI, Mecham BH, Howie B, Shim H, Naidoo D, Feng Q, Rieder MJ, Chen YD, et al. A statin-dependent QTL for GATM expression is associated with statin-induced myopathy. *Nature*. 2013; 502:377–80. doi: 10.1038/nature12508
62. Gutierrez-Arcelus M, Lappalainen T, Montgomery SB, Buil A, Ongen H, Yurovsky A, Bryois J, Giger T, Romano L, Planchon A, Falconnet E, Bielser D, Gagnebin M, et al. Passive and active DNA methylation and the interplay with genetic variation in gene regulation. *eLife*. 2013; 2:e00523.
63. Grundberg E, Small KS, Hedman ÅK, Nica AC, Buil A, Keildson S, Bell JT, Yang TP, Meduri E, Barrett A, Nisbett J, Sekowska M, Wilk A, et al, and Multiple Tissue Human Expression Resource (MuTHER) Consortium. Mapping cis- and trans-regulatory effects across multiple tissues in twins. *Nat Genet*. 2012; 44:1084–89. doi: 10.1038/ng.2394
64. Cusanovich DA, Billstrand C, Zhou X, Chavarria C, De Leon S, Michelini K, Pai AA, Ober C, Gilad Y. The combination of a genome-wide association study of lymphocyte count and analysis of gene expression data reveals novel asthma candidate genes. *Hum Mol Genet*. 2012; 21:2111–23. doi: 10.1093/hmg/dd5021
65. Dimas AS, Deutsch S, Stranger BE, Montgomery SB, Borel C, Attar-Cohen H, Ingle C, Beazley C, Gutierrez Arcelus M, Sekowska M, Gagnebin M, Nisbett J, Deloukas P, et al. Common regulatory variation impacts gene expression in a cell type-dependent manner. *Science*. 2009; 325:1246–50. doi: 10.1126/science.1174148
66. Andiappan AK, Melchioni R, Poh TY, Nah M, Puan KJ, Vigano E, Haase D, Yusof N, San Luis B, Lum J, Kumar D, Foo S, Zhuang L, et al. Genome-wide analysis of the genetic regulation of gene expression in human neutrophils. *Nat Commun*. 2015; 6:7971. doi: 10.1038/ncomms8971
67. Naranbhai V, Fairfax BP, Makino S, Humburg P, Wong D, Ng E, Hill AV, Knight JC. Genomic modulators of gene expression in human neutrophils. *Nat Commun*. 2015; 6:7545. doi: 10.1038/ncomms8545
68. Fairfax BP, Makino S, Radhakrishnan J, Plant K, Leslie S, Dilthey A, Ellis P, Langford C, Vannberg FO, Knight JC. Genetics of gene expression in primary immune cells identifies cell type-specific master regulators and roles of HLA alleles. *Nat Genet*. 2012; 44:502–10. doi: 10.1038/ng.2205
69. Kirsten H, Al-Hasani H, Holdt L, Gross A, Beutner F, Krohn K, Horn K, Ahnert P, Burkhardt R, Reiche K, Hackermüller J, Löffler M, Teupser D, et al.

- Dissecting the genetics of the human transcriptome identifies novel trait-related trans-eQTLs and corroborates the regulatory relevance of non-protein coding loci. *Hum Mol Genet.* 2015; 24:4746–63. doi: 10.1093/hmg/ddv194
70. Almlöf JC, Lundmark P, Lundmark A, Ge B, Maouche S, Göring HH, Liljedahl U, Enström C, Brocheton J, Proust C, Godefroy T, Sambrook JG, Jolley J, et al. Powerful identification of cis-regulatory SNPs in human primary monocytes using allele-specific gene expression. *PLoS One.* 2012; 7:e52260. doi: 10.1371/journal.pone.0052260
  71. Zeller T, Wild P, Szymczak S, Rotival M, Schillert A, Castagne R, Maouche S, Germain M, Lackner K, Rossmann H, Eleftheriadis M, Sinning CR, Schnabel RB, et al. Genetics and beyond—the transcriptome of human monocytes and disease susceptibility. *PLoS One.* 2010; 5:e10693. doi: 10.1371/journal.pone.0010693
  72. Heinzen EL, Ge D, Cronin KD, Maia JM, Shianna KV, Gabriel WN, Welsh-Bohmer KA, Hulette CM, Denny TN, Goldstein DB. Tissue-specific genetic control of splicing: implications for the study of complex traits. *PLoS Biol.* 2008; 6:e1. doi: 10.1371/journal.pbio.1000001
  73. Almlöf JC, Lundmark P, Lundmark A, Ge B, Pastinen T, Goodall AH, Cambien F, Deloukas P, Ouwehand WH, Syvänen AC, and Cardiogenics Consortium. Single nucleotide polymorphisms with cis-regulatory effects on long non-coding transcripts in human primary monocytes. *PLoS One.* 2014; 9:e102612. doi: 10.1371/journal.pone.0102612
  74. Fairfax BP, Humburg P, Makino S, Naranbhai V, Wong D, Lau E, Jostins L, Plant K, Andrews R, McGee C, Knight JC. Innate immune activity conditions the effect of regulatory variants upon monocyte gene expression. *Science.* 2014; 343:1246949. doi: 10.1126/science.1246949
  75. Barreiro LB, Tailleux L, Pai AA, Gicquel B, Marioni JC, Gilad Y. Deciphering the genetic architecture of variation in the immune response to *Mycobacterium tuberculosis* infection. *Proc Natl Acad Sci USA.* 2012; 109:1204–09. doi: 10.1073/pnas.1115761109
  76. Lee MN, Ye C, Villani AC, Raj T, Li W, Eisenhaure TM, Imboya SH, Chipendo PI, Ran FA, Slowikowski K, Ward LD, Raddassi K, McCabe C, et al. Common genetic variants modulate pathogen-sensing responses in human dendritic cells. *Science.* 2014; 343:1246980. doi: 10.1126/science.1246980
  77. Fischer D, Wahlfors T, Mattila H, Oja H, Tammela TL, Schleutker J. MiRNA Profiles in Lymphoblastoid Cell Lines of Finnish Prostate Cancer Families. *PLoS One.* 2015; 10:e0127427. doi: 10.1371/journal.pone.0127427
  78. Huang RS, Gamazon ER, Ziliak D, Wen Y, Im HK, Zhang W, Wing C, Duan S, Bleibel WK, Cox NJ, Dolan ME. Population differences in microRNA expression and biological implications. *RNA Biol.* 2011; 8:692–701. doi: 10.4161/rna.8.4.16029
  79. Degner JF, Pai AA, Pique-Regi R, Veyrieras JB, Gaffney DJ, Pickrell JK, De Leon S, Michelini K, Lewellen N, Crawford GE, Stephens M, Gilad Y, Pritchard JK. DNase I sensitivity QTLs are a major determinant of human expression variation. *Nature.* 2012; 482:390–94. doi: 10.1038/nature10808
  80. del Rosario RC, Poschmann J, Rouam SL, Png E, Khor CC, Hibberd ML, Prabhakar S. Sensitive detection of chromatin-altering polymorphisms reveals autoimmune disease mechanisms. *Nat Methods.* 2015; 12:458–64. doi: 10.1038/nmeth.3326
  81. Battle A, Khan Z, Wang SH, Mitrano A, Ford MJ, Pritchard JK, Gilad Y. Genomic variation. Impact of regulatory variation from RNA to protein. *Science.* 2015; 347:664–67. doi: 10.1126/science.1260793
  82. Zhang X, Joehanes R, Chen BH, Huan T, Ying S, Munson PJ, Johnson AD, Levy D, O'Donnell CJ. Identification of common genetic variants controlling transcript isoform variation in human whole blood. *Nat Genet.* 2015; 47:345–52. doi: 10.1038/ng.3220
  83. Huan T, Rong J, Liu C, Zhang X, Tanriverdi K, Joehanes R, Chen BH, Murabito JM, Yao C, Courchesne P, Munson PJ, O'Donnell CJ, Cox N, et al. Genome-wide identification of microRNA expression quantitative trait loci. *Nat Commun.* 2015; 6:6601. doi: 10.1038/ncomms7601
  84. Greenawalt DM, Dobrin R, Chudin E, Hatoum IJ, Suver C, Beaulaurier J, Zhang B, Castro V, Zhu J, Sieberts SK, Wang S, Molony C, Heymsfield SB, et al. A survey of the genetics of stomach, liver, and adipose gene expression from a morbidly obese cohort. *Genome Res.* 2011; 21:1008–16. doi: 10.1101/gr.112821.110
  85. Kompass KS, Witte JS. Co-regulatory expression quantitative trait loci mapping: method and application to endometrial cancer. *BMC Med Genomics.* 2011; 4:6. doi: 10.1186/1755-8794-4-6
  86. Li Q, Seo JH, Stranger B, McKenna A, Pe'er I, Laframboise T, Brown M, Tyekucheva S, Freedman ML. Integrative eQTL-based analyses reveal the biology of breast cancer risk loci. *Cell.* 2013; 152:633–41. doi: 10.1016/j.cell.2012.12.034

87. Wang X, Tang H, Teng M, Li Z, Li J, Fan J, Zhong L, Sun X, Xu J, Chen G, Chen D, Wang Z, Xing T, et al. Mapping of hepatic expression quantitative trait loci (eQTLs) in a Han Chinese population. *J Med Genet.* 2014; 51:319–26. doi: 10.1136/jmedgenet-2013-102045
88. Schröder A, Klein K, Winter S, Schwab M, Bonin M, Zell A, Zanger UM. Genomics of ADME gene expression: mapping expression quantitative trait loci relevant for absorption, distribution, metabolism and excretion of drugs in human liver. *Pharmacogenomics J.* 2013; 13:12–20. doi: 10.1038/tpj.2011.44
89. Innocenti F, Cooper GM, Stanaway IB, Gamazon ER, Smith JD, Mirkov S, Ramirez J, Liu W, Lin YS, Moloney C, Aldred SF, Trinklein ND, Schuetz E, et al. Identification, replication, and functional fine-mapping of expression quantitative trait loci in primary human liver tissue. *PLoS Genet.* 2011; 7:e1002078. doi: 10.1371/journal.pgen.1002078
90. Schadt EE, Molony C, Chudin E, Hao K, Yang X, Lum PY, Kasarskis A, Zhang B, Wang S, Suver C, Zhu J, Millstein J, Sieberts S, et al. Mapping the genetic architecture of gene expression in human liver. *PLoS Biol.* 2008; 6:e107. doi: 10.1371/journal.pbio.0060107
91. Grundberg E, Kwan T, Ge B, Lam KC, Koka V, Kindmark A, Mallmin H, Dias J, Verlaan DJ, Ouimet M, Sinnett D, Rivadeneira F, Estrada K, et al. Population genomics in a disease targeted primary cell model. *Genome Res.* 2009; 19:1942–52. doi: 10.1101/gr.095224.109
92. Kabakchiev B, Silverberg MS. Expression quantitative trait loci analysis identifies associations between genotype and gene expression in human intestine. *Gastroenterology.* 2013; 144:1488–96, 1496.e1–3. doi: 10.1053/j.gastro.2013.03.001
93. Huler I, Gamazon ER, Skol AD, Xicola RM, Llor X, Onel K, Ellis NA, Kupfer SS. Enrichment of inflammatory bowel disease and colorectal cancer risk variants in colon expression quantitative trait loci. *BMC Genomics.* 2015; 16:138. doi: 10.1186/s12864-015-1292-z
94. Ongen H, Andersen CL, Bramsen JB, Oster B, Rasmussen MH, Ferreira PG, Sandoval J, Vidal E, Whiffin N, Planchon A, Padioleau I, Bielser D, Romano L, et al. Putative cis-regulatory drivers in colorectal cancer. *Nature.* 2014; 512:87–90.
95. Keildson S, Fadista J, Ladenvall C, Hedman ÅK, Elgzyri T, Small KS, Grundberg E, Nica AC, Glass D, Richards JB, Barrett A, Nisbet J, Zheng HF, et al, and MAGIC Consortium, and DIAGRAM Consortium, and MuTHER Consortium. Expression of phosphofructokinase in skeletal muscle is influenced by genetic variation and associated with insulin sensitivity. *Diabetes.* 2014; 63:1154–65. doi: 10.2337/db13-1301
96. Quigley DA, Fiorito E, Nord S, Van Loo P, Alnæs GG, Fleischer T, Tost J, Moen Volla HK, Tramm T, Overgaard J, Bukholm IR, Hurtado A, Balmain A, et al. The 5p12 breast cancer susceptibility locus affects MRPS30 expression in estrogen-receptor positive tumors. *Mol Oncol.* 2014; 8:273–84. doi: 10.1016/j.molonc.2013.11.008
97. Curtis C, Shah SP, Chin SF, Turashvili G, Rueda OM, Dunning MJ, Speed D, Lynch AG, Samarajiwa S, Yuan Y, Gräf S, Ha G, Haffari G, et al, and METABRIC Group. The genomic and transcriptomic architecture of 2,000 breast tumours reveals novel subgroups. *Nature.* 2012; 486:346–52.
98. Luo W, et al. Airway Epithelial Expression Quantitative Trait Loci Reveal Genes Underlying Asthma and Other Airway Diseases. *Am J Respir Cell Mol Biol.* 2015.
99. Gao C, Tignor NL, Salit J, Strulovici-Barel Y, Hackett NR, Crystal RG, Mezey JG. HEFT: eQTL analysis of many thousands of expressed genes while simultaneously controlling for hidden factors. *Bioinformatics.* 2014; 30:369–76. doi: 10.1093/bioinformatics/btt690
100. Lamontagne M, Couture C, Postma DS, Timens W, Sin DD, Paré PD, Hogg JC, Nickle D, Laviolette M, Bossé Y. Refining susceptibility loci of chronic obstructive pulmonary disease with lung eqtls. *PLoS One.* 2013; 8:e70220. doi: 10.1371/journal.pone.0070220
101. Hao K, Bossé Y, Nickle DC, Paré PD, Postma DS, Laviolette M, Sandford A, Hackett TL, Daley D, Hogg JC, Elliott WM, Couture C, Lamontagne M, et al. Lung eQTLs to help reveal the molecular underpinnings of asthma. *PLoS Genet.* 2012; 8:e1003029. doi: 10.1371/journal.pgen.1003029
102. Ding J, Gudjonsson JE, Liang L, Stuart PE, Li Y, Chen W, Weichenthal M, Ellinghaus E, Franke A, Cookson W, Nair RP, Elder JT, Abecasis GR. Gene expression in skin and lymphoblastoid cells: refined statistical method reveals extensive overlap in cis-eQTL signals. *Am J Hum Genet.* 2010; 87:779–89. doi: 10.1016/j.ajhg.2010.10.024
103. Wagner JR, Busche S, Ge B, Kwan T, Pastinen T, Blanchette M. The relationship between DNA methylation, genetic and expression inter-individual variation in untransformed human fibroblasts. *Genome Biol.* 2014; 15:R37. doi: 10.1186/gb-2014-15-2-r37

104. Qiu W, Cho MH, Riley JH, Anderson WH, Singh D, Bakke P, Gulsvik A, Litonjua AA, Lomas DA, Crapo JD, Beaty TH, Celli BR, Rennard S, et al, and ECLIPSE Investigators. Genetics of sputum gene expression in chronic obstructive pulmonary disease. *PLoS One*. 2011; 6:e24395. doi: 10.1371/journal.pone.0024395
105. Fadista J, Vikman P, Laakso EO, Mollet IG, Esguerra JL, Taneera J, Storm P, Osmark P, Ladenvall C, Prasad RB, Hansson KB, Finotello F, Uvebrant K, et al. Global genomic and transcriptomic analysis of human pancreatic islets reveals novel genes influencing glucose metabolism. *Proc Natl Acad Sci USA*. 2014; 111:13924–29. doi: 10.1073/pnas.1402665111
106. Larson NB, McDonnell S, French AJ, Fogarty Z, Chevillet J, Middha S, Riska S, Baheti S, Nair AA, Wang L, Schaid DJ, Thibodeau SN. Comprehensively evaluating cis-regulatory variation in the human prostate transcriptome by using gene-level allele-specific expression. *Am J Hum Genet*. 2015; 96:869–82. doi: 10.1016/j.ajhg.2015.04.015
107. Singh T, Levine AP, Smith PJ, Smith AM, Segal AW, Barrett JC. Characterization of expression quantitative trait loci in the human colon. *Inflamm Bowel Dis*. 2015; 21:251–56. doi: 10.1097/MIB.0000000000000265
108. Koopmann TT, Adriaens ME, Moerland PD, Marsman RF, Westerveld ML, Lal S, Zhang T, Simmons CQ, Baczko I, dos Remedios C, Bishopric NH, Varro A, George AL Jr, et al. Genome-wide identification of expression quantitative trait loci (eQTLs) in human heart. *PLoS One*. 2014; 9:e97380. doi: 10.1371/journal.pone.0097380
109. Lin H, Dolmatova EV, Morley MP, Lunetta KL, McManus DD, Magnani JW, Margulies KB, Hakonarson H, del Monte F, Benjamin EJ, Cappola TP, Ellinor PT. Gene expression and genetic variation in human atria. *Heart Rhythm*. 2014; 11:266–71. doi: 10.1016/j.hrthm.2013.10.051
110. Rantalainen M, Herrera BM, Nicholson G, Bowden R, Wills QF, Min JL, Neville MJ, Barrett A, Allen M, Rayner NW, Fleckner J, McCarthy MI, Zondervan KT, et al. MicroRNA expression in abdominal and gluteal adipose tissue is associated with mRNA expression levels and partly genetically driven. *PLoS One*. 2011; 6:e27338. doi: 10.1371/journal.pone.0027338
111. Gamazon ER, Innocenti F, Wei R, Wang L, Zhang M, Mirkov S, Ramirez J, Huang RS, Cox NJ, Ratain MJ, Liu W. A genome-wide integrative study of microRNAs in human liver. *BMC Genomics*. 2013; 14:395. doi: 10.1186/1471-2164-14-395
112. Olsson AH, Volkov P, Bacos K, Dayeh T, Hall E, Nilsson EA, Ladenvall C, Rönn T, Ling C. Genome-wide associations between genetic and epigenetic variation influence mRNA expression and insulin secretion in human pancreatic islets. *PLoS Genet*. 2014; 10:e1004735. doi: 10.1371/journal.pgen.1004735
113. Li Q, Stram A, Chen C, Kar S, Gayther S, Pharoah P, Haiman C, Stranger B, Kraft P, Freedman ML. Expression QTL-based analyses reveal candidate causal genes and loci across five tumor types. *Hum Mol Genet*. 2014; 23:5294–302. doi: 10.1093/hmg/ddu228
114. Kim Y, Xia K, Tao R, Giusti-Rodriguez P, Vladimirov V, van den Oord E, Sullivan PF. A meta-analysis of gene expression quantitative trait loci in brain. *Transl Psychiatry*. 2014; 4:e459. doi: 10.1038/tp.2014.96
115. Zou F, Chai HS, Younkin CS, Allen M, Crook J, Pankratz VS, Carrasquillo MM, Rowley CN, Nair AA, Middha S, Maharjan S, Nguyen T, Ma L, et al, and Alzheimer's Disease Genetics Consortium. Brain expression genome-wide association study (eGWAS) identifies human disease-associated variants. *PLoS Genet*. 2012; 8:e1002707. doi: 10.1371/journal.pgen.1002707
116. Webster JA, Gibbs JR, Clarke J, Ray M, Zhang W, Holmans P, Rohrer K, Zhao A, Marlowe L, Kaleem M, McCorquodale DS 3rd, Cuello C, Leung D, et al, and NACC-Neuropathology Group. Genetic control of human brain transcript expression in Alzheimer disease. *Am J Hum Genet*. 2009; 84:445–58. doi: 10.1016/j.ajhg.2009.03.011
117. Ramasamy A, Trabzuni D, Guelfi S, Varghese V, Smith C, Walker R, De T, Coin L, de Silva R, Cookson MR, Singleton AB, Hardy J, Ryten M, et al, and North American Brain Expression Consortium. Genetic variability in the regulation of gene expression in ten regions of the human brain. *Nat Neurosci*. 2014; 17:1418–28. doi: 10.1038/nn.3801
118. Zhang B, Gaiteri C, Bodea LG, Wang Z, McElwee J, Podtelezhnikov AA, Zhang C, Xie T, Tran L, Dobrin R, Fluder E, Clurman B, Melquist S, et al. Integrated systems approach identifies genetic nodes and networks in late-onset Alzheimer's disease. *Cell*. 2013; 153:707–20. doi: 10.1016/j.cell.2013.03.030
119. Kim S, Cho H, Lee D, Webster MJ. Association between SNPs and gene expression in multiple regions of the human brain. *Transl Psychiatry*. 2012; 2:e113. doi: 10.1038/tp.2012.42
120. Gamazon ER, Badner JA, Cheng L, Zhang C, Zhang D, Cox NJ, Gershon ES, Kelsoe JR, Greenwood TA, Nievergelt CM, Chen C, McKinney R, Shilling PD, et al. Enrichment of cis-regulatory gene expression SNPs and methylation quantitative trait loci among

bipolar disorder susceptibility variants. *Mol Psychiatry*. 2013; 18:340–46. doi: 10.1038/mp.2011.174

121. Gibbs JR, van der Brug MP, Hernandez DG, Traynor BJ, Nalls MA, Lai SL, Arepalli S, Dillman A, Rafferty IP, Troncoso J, Johnson R, Zielke HR, Ferrucci L, et al. Abundant quantitative trait loci exist for DNA methylation and gene expression in human brain. *PLoS Genet*. 2010; 6:e1000952. doi: 10.1371/journal.pgen.1000952
122. Shpak M, Hall AW, Goldberg MM, Derryberry DZ, Ni Y, Iyer VR, Cowperthwaite MC. An eQTL analysis of the human glioblastoma multiforme genome. *Genomics*. 2014; 103:252–63. doi: 10.1016/j.ygeno.2014.02.005
123. Colantuoni C, Lipska BK, Ye T, Hyde TM, Tao R, Leek JT, Colantuoni EA, Elkahoulun AG, Herman MM, Weinberger DR, Kleinman JE. Temporal dynamics and genetic control of transcription in the human prefrontal cortex. *Nature*. 2011; 478:519–23. doi: 10.1038/nature10524
124. Liu C, Cheng L, Badner JA, Zhang D, Craig DW, Redman M, Gershon ES. Whole-genome association mapping of gene expression in the human prefrontal cortex. *Mol Psychiatry*. 2010; 15:779–84. doi: 10.1038/mp.2009.128