



THE UNIVERSITY *of* EDINBURGH

Edinburgh Research Explorer

Low-lying, Rydberg states of polycyclic aromatic hydrocarbons (PAHs) and cyclic alkanes

Citation for published version:

Bohl, E, Mignolet, B, Johansson, JO, Remacle, F & Campbell, EEB 2017, 'Low-lying, Rydberg states of polycyclic aromatic hydrocarbons (PAHs) and cyclic alkanes' Physical Chemistry Chemical Physics, vol 19, no. 35, pp. 24090-24099. DOI: 10.1039/C7CP03913A

Digital Object Identifier (DOI):

[10.1039/C7CP03913A](https://doi.org/10.1039/C7CP03913A)

Link:

[Link to publication record in Edinburgh Research Explorer](#)

Document Version:

Peer reviewed version

Published In:

Physical Chemistry Chemical Physics

General rights

Copyright for the publications made accessible via the Edinburgh Research Explorer is retained by the author(s) and / or other copyright owners and it is a condition of accessing these publications that users recognise and abide by the legal requirements associated with these rights.

Take down policy

The University of Edinburgh has made every reasonable effort to ensure that Edinburgh Research Explorer content complies with UK legislation. If you believe that the public display of this file breaches copyright please contact openaccess@ed.ac.uk providing details, and we will remove access to the work immediately and investigate your claim.



Low-lying, Rydberg States of Polycyclic Aromatic Hydrocarbons (PAHs) and Cyclic Alkanes

E. Bohl,^{1,§} B. Mignolet,^{2,§} J.O. Johansson,¹ F. Remacle² and E. E. B. Campbell^{1,3*}

¹ EaStCHEM, School of Chemistry, University of Edinburgh, Edinburgh EH9 3FJ, U.K.

²Theoretical Physical Chemistry, UR MolSYS, B6c, University of Liège, B4000, Liège, Belgium

³ Division of Quantum Phases & Devices, School of Physics, Konkuk University, Seoul 05029, Korea

§: These authors contributed equally to the work

*: Corresponding author, eleanor.campbell@ed.ac.uk

Abstract

TD-DFT calculations of low-lying, Rydberg states of a series of polycyclic hydrocarbons and cyclic alkanes are presented. Systematic variations in binding energies and photoelectron angular distributions for the first members of the s, p and d Rydberg series are predicted for increasing molecular complexity. Calculated binding energies are found to be in very good agreement with literature values where they exist for comparison. Experimental angle-resolved photoelectron spectroscopy results are presented for coronene, again showing very good agreement with theoretical predictions of binding energies and also for photoelectron angular distributions. The Dyson orbitals for the small “hollow” carbon structures, cubane, adamantane and dodecahedrane, are shown to have close similarities to atomic s, p and d orbitals, similar to the superatom molecular orbitals (SAMOs) reported for fullerenes, indicating that these low-lying, diffuse states are not restricted to π -conjugated molecules.

Keywords: PAH, Rydberg Fingerprint Spectroscopy, fs photoelectron spectroscopy, TD-DFT, Dyson orbitals, SAMO

1. Introduction

Highly diffuse atomic-like molecular orbitals, with electron binding energies close to the lowest excited valence states, have been the subject of recent interest since the report of spectacular images of such states in low-temperature scanning tunnel spectroscopy studies of C₆₀.^[1] These orbitals were given the name “superatom molecular orbital” (SAMO) due to their similarity with hydrogenic atomic orbitals. Evidence was also found for the existence of excited fullerene SAMO states in fs laser photoelectron spectroscopy experiments.^[2-5] Theoretical studies have confirmed the unusual nature of these lowest-lying members of Rydberg series in fullerenes, showing a deviation in the binding energies extrapolated from higher-lying, more conventional Rydberg states due to the proximity to the molecular core and also having a significant component of the electron density inside the hollow cage.^[6] SAMO states have also been predicted in theoretical calculations of fullerene anions.^[7] Interest in these exotic, excited electronic states has been sparked by their predicted ability to form highly diffuse nearly-free electron bands in the solid state,^[8] making them potentially interesting for applications within molecular electronics. They are also of fundamental interest due to their intrinsic beauty and their potential role in astrochemistry.^[9]

An understanding of the photophysics of excited electronic states of polycyclic aromatic hydrocarbons (PAH) is also of considerable interest for both molecular electronics ^[10] and astrochemistry ^[11]. Although the spectroscopy of these systems has been extensively studied for many years, relatively little is known about the low-lying Rydberg states of PAHs. Due to the proximity of the lowest members of Rydberg series to the molecular core, they can deviate from pure Rydberg states and be mixed with valence states of similar energy. A number of transitions observed in UV absorption spectroscopy and electron energy loss spectroscopy have been assigned to these states.^[12] Bréchnac et al. have recently reported photoelectron – photoion coincidence measurements on coronene that provide information on autoionising resonances that have been attributed to a p-like Rydberg series converging on an excited cation state.^[13] Weber and co-workers identified peak structure in fs photoelectron spectroscopy (Rydberg Fingerprint Spectroscopy) experiments of a number of PAHs that was attributed to low-lying Rydberg states. In these studies, the angular momenta of the states were assigned on the basis of the measured quantum defect that was indicative of the molecular structure. The photoelectron spectra were proposed as a means of “molecular fingerprinting”.^[14] TD-DFT studies have concentrated on individual valence transitions ^[15] or on reproducing experimental spectra ^[16] without focusing specifically on the molecular

orbital nature of the excited states. A G_0W_0 theoretical study has predicted diffuse low-lying Rydberg states in corannulene and other “bowl-shaped” molecules and considered the potential for formation of nearly-free electron bands in the solid state, similar to the fullerene SAMOs, but with a much lower excitation energy, making them potentially more attractive for molecular electronics applications.[17]

In this paper we use a combination of TD-DFT and fs laser photoelectron spectroscopy to explore the properties of low-lying Rydberg states of PAH molecules and cyclic alkanes. We predict that all these molecules exhibit highly diffuse low angular momentum Rydberg states that extend across the entire molecule and have beautifully simple orbital geometries, showing close similarities with the fullerene SAMOs. We show that the calculations can reproduce the experimental binding energies of these states and we provide a detailed comparison with experimental photoelectron angular distributions obtained for coronene. The results show that these intriguing and beautiful excited states are not restricted to curved systems [17] or even to conjugated molecules. The photoelectron angular distributions and electron density distributions of the lowest members of the Rydberg series of small cage alkanes such as cubane, adamantane and dodecahedrane, indicate that the use of the term SAMO, coined for fullerenes, could be an appropriate description also for these hollow, non-conjugated molecules.

2. Methods

2.1. Computational

The quantum chemistry Kohn-Sham DFT implementation was used as included in Gaussian 09 with the CAM-B3LYP functional.[18] This functional gives relatively accurate excitation energies for local, charge transfer and Rydberg states[19] and the Dyson orbitals computed with this functional are in reasonable agreement with Dyson orbitals computed at the EOM-CC level.[20] A large basis set including diffuse basis functions was used to describe the PAH excited electronic states. Since the binding energies of the electronic states of interest are expected to lie within a range of 0-3 eV, TD-DFT computations for large bands of up to 100 excited states were carried out at the TD-DFT/CAM-B3LYP level with the 6-31++G(d,p) basis set augmented with a set of diffuse s and p functions on each carbon atom (with an exponent of 0.01095).[21] The ionisation energies (I.E.) of the PAHs and binding energies (B.E.) of the low-lying Rydberg states of naphthalene and coronene computed at this level of

theory are in good agreement with experimental data (Table 1 and Supplementary Information).

The photoelectron angular distributions of the neutral PAHs are computed from their Dyson orbitals, [22-24] which are defined as the overlap between the wavefunction of a neutral electronic state with a cationic electronic state. We computed the Dyson orbital of each TD-DFT excited state corresponding to its photoionisation to the cationic ground state. Since the excited states are often composed of several orbital excitations, the Dyson orbitals are a linear combination of molecular orbitals, which can give them a complex shape [24, 25] that is different from the DFT Kohn-Sham orbitals used to build the excitations in TDDFT. For the Rydberg states the Dyson orbitals are typically composed of several Rydberg orbitals, corresponding to HOMO-Rydberg orbital transitions of the same symmetry, with the lower excited states often containing some significant contribution from excited valence molecular orbitals.[26]

A central quantity in the computation of the photoelectron angular distributions and photoionisation widths (proportional to the photoionisation cross-sections) is the photoionisation matrix element, [24, 25] which is the dipolar coupling element between the neutral wavefunction and the wavefunction of an ionized state. This matrix element can be rewritten as the dipolar coupling of the Dyson orbital (i.e. the orbital from which the electron is ionized) with the wavefunction of the ionised electron, which is taken here as a plane wave. The photoionisation widths and photoelectron angular distributions were computed from the photoionisation matrix elements at the equilibrium geometry of an oriented molecule for several orientations of the electric field using an in-house code. [6] Then we randomly select 600 orientations of the electric field and use Euler rotations to rotate the oriented molecule and its angular distribution for each electric field polarisation so that we obtain a set of randomly oriented molecules with an electric field polarised in a single direction. The photoionisation widths and photoelectron angular distributions reported below take into account the averaging over molecular orientation. From the photoelectron angular distributions we can determine the anisotropy parameter as outlined in section 3.2 of the paper. Additional information can be found in the SI and in a previous study of the SAMO excited states of C₆₀ [6].

2.2. Experimental

The experimental apparatus consists of a velocity map imaging photoelectron spectrometer and a time-of-flight mass spectrometer, which has been explained in more detail previously.[3] Coronene was purchased from Sigma-Aldrich (97% purity) and was used without further purification. The coronene sample was heated in an oven to about 180-195 °C to create an effusive molecular beam. The output from an amplified Ti:Sapphire laser system (800nm, 120 fs pulse duration, 1 kHz repetition rate) was frequency doubled using a BBO crystal to provide pulses at a wavelength of 400 nm. A fused silica lens (50 cm focal length) was used to focus the laser beam into the spectrometer chamber. The laser intensity was adjusted by using a continuously variable neutral density filter.

The effusive molecular beam was intersected at right angles by the laser and the photoelectrons or ions extracted perpendicular to both the laser beam and the molecular beam. The photoelectrons were imaged onto a position sensitive, velocity map imaging detector as described in detail previously.[3] Centroiding was applied [27] while recording the images which were integrated over 10^7 laser pulses. The recorded images were inverted using a modified POP inversion algorithm [28] which included Legendre polynomials up to the 10th order.[29] The inversion was checked for consistency by ensuring that the same peak structure was obtained in the photoelectron spectra when the data were inverted using BASEX.[30] The calibration of the energy scale was achieved by recording the multiphoton ionisation of xenon, resulting in well-known peaks.[31] A detailed description of the data analysis is given by Johansson et al..[3]

The technique used to probe the low-lying Rydberg structure has been called Rydberg Fingerprint Spectroscopy.[5, 14] By using fs laser pulses, multiphoton excitation leads to an incoherent population of a series of Rydberg states that can be single-photon ionised within the same laser pulse. The technique can be used to obtain resolved peak structure even for vibrationally hot molecules since the final, ionising transition conserves the vibrational quantum number. Rydberg structure is preferentially seen in the photoelectron spectra due to the much higher probability for ionising the Rydberg states within the timescale of the laser pulse compared to the more densely populated excited valence states.[6]

3. Results and Discussions

3.1. TD-DFT Calculations

The structures of the molecules investigated in this study are shown in Fig. 1. Three families were investigated: The “1D” PAH family consisting of benzene to hexacene, the “2D” PAH family of phenanthrene to coronene and the “3D” family consisting of the cyclic alkanes, cubane, adamantane, and dodecahedrane as well as the C₂₀ fullerene, dodecahedrene. Table 1 displays the excited Rydberg binding energies (determined from the difference between the calculated values for the relevant Dyson orbitals and the vertical ionisation energies) calculated at the TD-DFT/CAM-B3LYP/ 6-31(2+)+G(d,p) level for all investigated molecules, along with experimental values from the literature. The binding energy data for the first s, p and d Rydberg bands is also shown graphically in Fig. 2a where the development of the binding energies with increasing molecular complexity can be easily seen. The “1D” and “2D” PAH families have very similar binding energies for the same number of carbon atoms with the binding energy generally decreasing with increasing molecular size. The binding energies for the “3D” series are slightly higher with an almost constant binding energy for the s Rydberg state for the range of investigated molecules. The s and d binding energies are very close for the hydrogenated dodecahedrane and the “bare” fullerene dodecahedrene but the p-Rydberg binding energy appears significantly lower for dodecahedrane. Since the ionisation energies differ by 2eV, this implies that the excitation energies needed to access the Rydberg states in the “bare” fullerene are ca. 2eV lower than for C₂₀H₂₀. The “error bars” indicate the calculated or experimentally determined energy spread of the corresponding Rydberg band. The agreement between experimental and calculated binding energies is very good. Fig. 2a also shows the previously reported theoretical and experimental values for the SAMOs of C₆₀, C₇₀, C₈₂ and C₈₄ fullerenes for comparison.[6] The theoretical values for C₆₀ and above were calculated at the TD-DFT/B3LYP/6-31+G(d) level (triangles)[3] and also TD-DFT/CAM-B3LYP 6-31+G(d)-Bq(6-31(6+)+G(d)) level for C₆₀ (diamonds).[6]

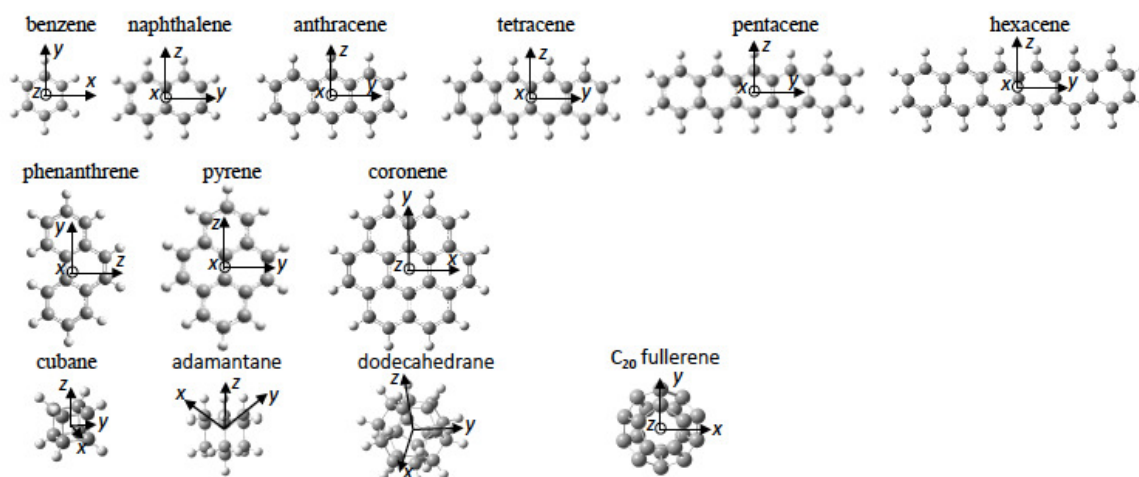


Fig. 1. Equilibrium geometry of the investigated molecules and orientation of the molecular frame.

The Dyson orbitals of the lowest *s* and *p* Rydberg states are shown in Fig. 3 for some of the investigated molecules. They all show diffuse, hydrogenic character, with, for most of them, two nodal surfaces corresponding to quantum numbers $n = 3, 4$ and 5 for *s*, *p* and *d* bands respectively, similar to the previously investigated SAMO states of the fullerenes.[6] Experimental data on the binding energies of the lowest *s*, *p* and *d* Rydberg states of naphthalene is available from Rydberg Fingerprint Spectroscopy studies [14], shown in Fig. 2, and is in good agreement with the calculated values (2.57 eV, 2.14 eV and 1.55 eV respectively for the *s*, *p* and *d* bands). There is also information available from absorption spectroscopy assigning broad bands at 2.55 ± 0.09 eV and 2.35 ± 0.09 eV to the *s* and *p* Rydberg states, respectively.[32] Rydberg structure was observed in fs photoionisation studies of anthracene at binding energies of 1.15 eV and 1.38 eV [33] that we attribute to the lowest-lying *d* Rydberg state due to the good agreement with the calculations.

Molecule		Theor. B.E. / eV					Theor. I.E. / eV		Exp I.E./eV	
		s	p _z	p _x	p _y	d	Vert.	Adiab.	Vert.	Adiab.
benzene	C ₆ H ₆	2.90	2.42	2.33	2.33	1.48-1.74	9.27	9.12	9.24 ± 0.02 [*]	9.24378 ± 0.00007 [#]
naphthalene	C ₁₀ H ₈	2.50	2.14	2.12	2.11	1.36-1.58	8.05	7.94	8.14 [*]	8.144 ± 0.001 [#]
anthracene	C ₁₄ H ₁₀	2.23	1.97	1.92	1.90	1.25-1.50	7.26	7.16	7.41 [*]	7.439 ± 0.006 [#]
tetracene	C ₁₈ H ₁₂	2.05	1.85	1.76	1.75	1.07-1.46	6.72	6.64	6.97 [*]	6.93 [‡]
pentacene	C ₂₂ H ₁₄	1.92	1.76	1.64	1.63	0.88-1.39	6.34	6.26	6.61 ± 0.02 [*]	6.63 ± 0.05 [#]
hexacene	C ₂₆ H ₁₆	1.83	1.68	1.55	1.55	0.97-1.33	6.05	5.98	6.36 ± 0.02 [*]	6.36 [§]
phenanthrene	C ₁₄ H ₁₀	2.00	1.60	1.68	1.62	1.19-1.47	7.84	7.69	7.86 ± 0.02 [*]	7.891 ± 0.001 [#]
pyrene	C ₁₆ H ₁₀	2.19	1.86	1.80	1.90	1.04-1.49	7.31	7.20	7.42 [¶]	7.426 ± 0.001 [#]
coronene	C ₂₄ H ₁₂	1.98	1.67	1.80	1.72	1.09-1.40	7.29	7.20	7.29 [‡]	7.310 ± 0.005 [†]
cubane	C ₈ H ₈	2.74	2.62	2.62	2.62	1.56-1.67	9.50	8.78	9.00 [§]	8.6 ± 0.1 [#]
adamantane	C ₁₀ H ₁₆	2.68	2.09	2.13	2.08	1.52-1.66	9.75	9.52	9.75 ± 0.02 [€]	9.25 ± 0.04 [#]
dodecahedrane	C ₂₀ H ₂₀	2.70	2.19	2.13	2.13	1.44-1.58	9.31	9.12	-	-
dodecahedrene	C ₂₀	2.77	2.46	2.56	2.56	1.34-1.36	7.35	7.12	-	-

Table 1. Rydberg binding energies (B.E.) and ionisation energies (I.E.) calculated at the TD-DFT/CAM-B3LYP/6-31(2+)+G(d,p) level. Experimental values: # recommended value of the adiabatic I.E. from the NIST Chemistry WebBook [34]; * Schmidt [35]; ‡ Zhang et al. [36] § Clar et al. [37]; ¶ Akiyama et al. [38]; ‡ Clar and Schmidt [39]; † Bréchnignac et al. [13]; § Bishof et al. [40]; € Worrell et al. [41]

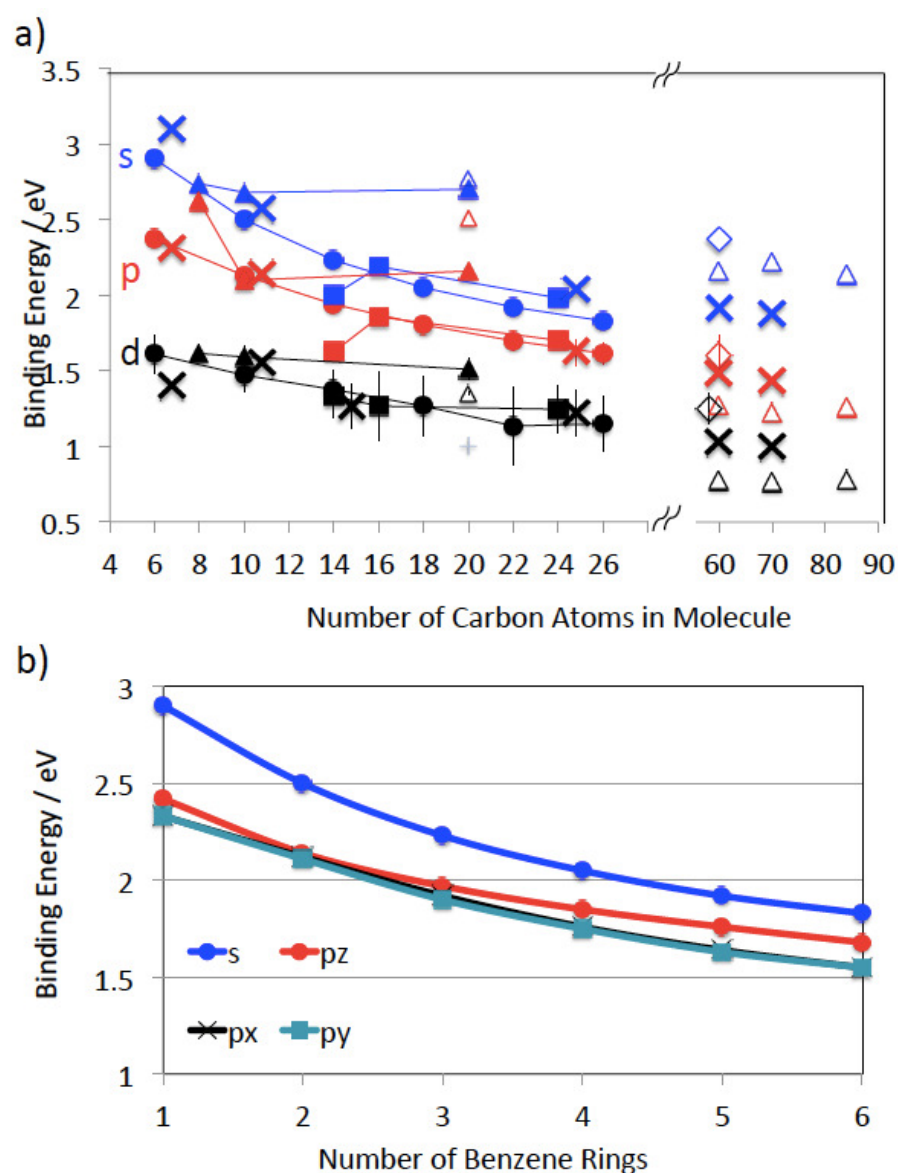


Fig. 2. a) Binding energies of the lowest-lying s, p and d Rydberg states as a function of molecular size. The straight lines connect molecules from the same “family” (Fig. 1) and are to guide the eye. Circles: benzene to hexacene, filled squares: phenanthrene to coronene, filled triangles: cubane to dodecahedrane, empty triangles and empty diamonds: “bare” fullerenes, crosses: experimental data. The experimental PAH values have been shifted slightly along the x-axis for clarity. The vertical lines indicate the spread in binding energies for the given Rydberg band. Experimental values: benzene [12], naphthalene [14], anthracene [33], coronene from this study. Previously reported values for fullerenes are included for comparison.[3] b) Computed binding energies of the s, p_x, p_y and p_z Rydberg states of the 1D PAH family (p_x values are almost identical to p_y).

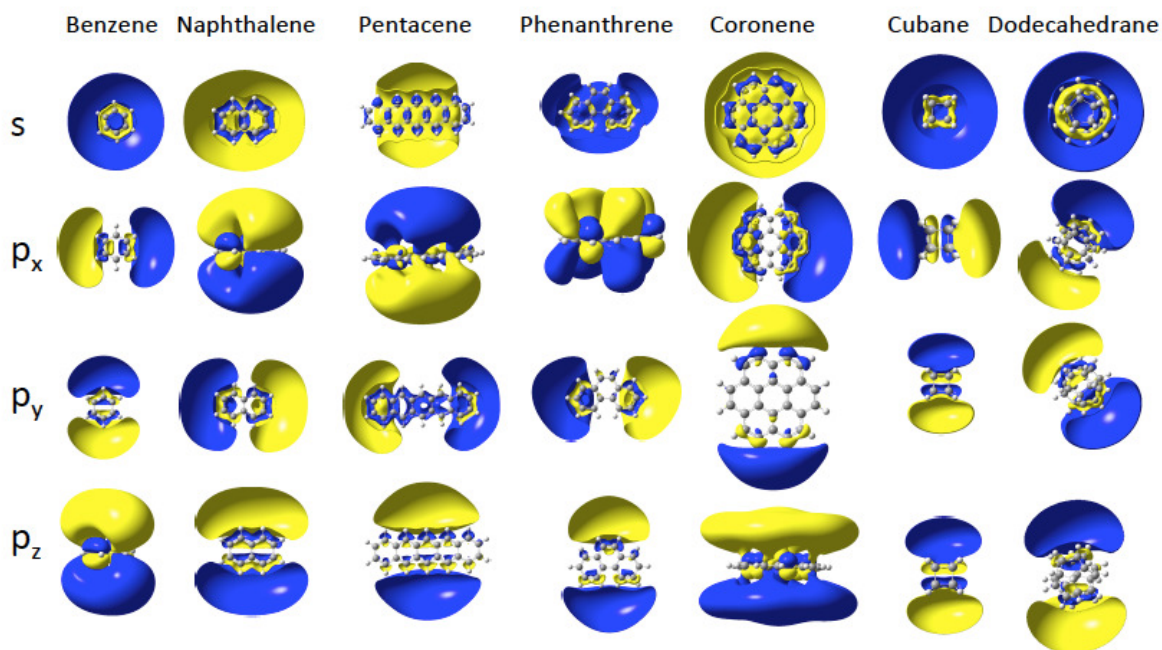


Fig. 3. Cut in the Dyson orbitals of s and p Rydberg states of selected molecules (isocontour of $0.005 \text{ lel}/a_0^3$).

For the 1D PAH series from naphthalene to hexacene, the binding energies of the s and p Rydberg states decrease smoothly as the number of benzene rings present in the molecule increases, Fig. 2b.

The p_y and p_x Rydberg states, which are oriented respectively along the molecular plane and perpendicular to it, have very close binding energies (within 0.02eV) and the gap with the s Rydberg state is constant within 0.1eV (Fig. 2b and table 1) in the series. The p_y and p_x Rydberg states are not degenerate by symmetry as they belong to different irreducible representation of the D_{2h} point group (B_{2u} for p_y and B_{3u} for p_x). The third component of the p Rydberg, p_z (B_{1u}), has a binding energy that does not decrease as quickly as for the p_x and p_y components of the p Rydberg band, suggesting it is less affected by the growing size of the PAH. The spatial delocalization of the p_z orbital along the molecule increases as the PAH becomes larger but the distance between the positive and negative lobes remains similar

unlike for the p_y Rydberg for example (Fig. 3). The benzene molecule is also categorized in the 1D PAH family but the binding energy of the s and p Rydberg states are larger than for the other PAHs and the two p components in the plane are degenerate by symmetry. Overall all the s and p Rydberg states shown in Fig. 3 exhibit a mixed character with binding σ or π valence orbitals, which is characteristic for low-lying molecular Rydberg states.[26]

The Dyson orbitals of the PAH Rydberg states strongly vary as the number of benzene rings increases for the 1D family. For instance the benzene molecule has an almost spherical s Dyson orbital while for the naphthalene, anthracene and tetracene molecules (respectively two, three and four benzene rings) the s orbital exhibits an elliptical shape and for the larger PAHs, the Dyson orbital has a doughnut shape (or two lobes) centred at the centre of mass (Fig. 4a). As the number of benzene rings increases in the molecule, the s Rydberg orbital becomes more diffuse (Fig. 4b) and so its binding energy decreases. The breaking of the spherical symmetry could also destabilize the states. A similar trend is observed for the p_z Rydberg state where the binding energy decreases as the size of the PAH increases (Fig. 4e and 4f). It should also be pointed out that the p_z orbital is not delocalized over the whole molecule, it spreads at most over four benzene rings.

Rydberg fingerprint spectroscopy, the experimental technique used here to probe the binding energies and photoelectron angular distributions of the low-lying Rydberg states, relies on the photoionisation lifetimes of the Rydberg states being much shorter than those of excited valence states.[6, 42] When this is the case, the peak structure due to population and ionisation of Rydberg states dominates over the lower signal from the high density of populated valence excited states that can also contribute to a thermal emission background. The photoionisation widths, Γ , that are proportional to the photoionisation cross sections and inversely proportional to the photoionisation lifetimes, were computed for the excited states of naphthalene and hexacene (Fig. 5a and 5b) for photon energies appropriate for fs laser studies and a laser intensity of 10^{12} W/cm². Since the widths vary with the kinetic energy of the ionized electron, they have been computed for ionisation by a 400nm photon for naphthalene and a 500nm photon for hexacene so that the kinetic energy of the electron ionized from the s Rydberg is around 0.6eV in both cases. The widths of the Rydberg states are between one and three orders of magnitude larger than those of the valence states lying in the vicinity of these Rydberg states. This is less than for C₆₀ [6] but is still sufficient to provide confidence that the Rydberg states will be clearly visible in the fs laser photoelectron spectrum. The photoionisation widths for the Rydberg states are around one order of

magnitude smaller in magnitude to those of the fullerene SAMOs while the widths of the valence states are of the same order of magnitude. Unlike in fullerenes, the density of valence states between the Rydberg bands is smaller for the PAHs, probably because of the smaller size of the PAHs.

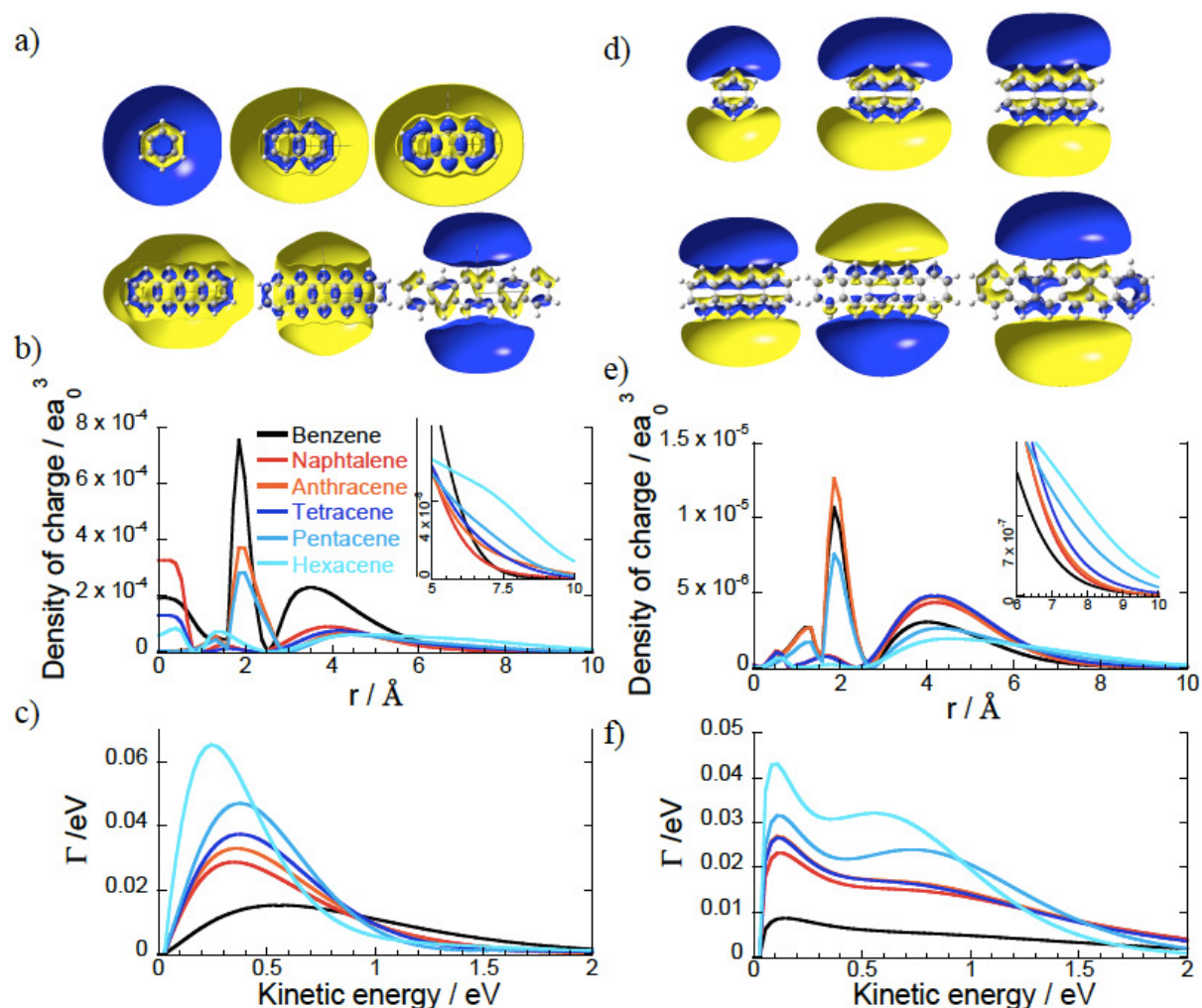


Fig. 4: a) Cut in the Dyson orbitals of the s Rydberg state for the molecules in the 1D PAH family (isocontour $0.005 \text{ lel}/a_0^3$). b) Density of charge of the s Dyson orbitals of panel a in the z direction. c) Photoionization widths of the s Rydberg states (panel a) as a function of the kinetic energy of the ionized electron. The color code is the same as in panel c. d-f) Same as panel a, b and c for the p_z Rydberg states.

The photoionisation widths of the Rydberg states quickly decrease when the ionised electron kinetic energy increases (Fig. 5c), unlike the valence state widths that are more or less constant in the energy domain 0-2eV. Therefore the gap between the widths of the Rydberg

and valence states decreases when the photon energy increases. This indicates that the underlying signal from photoionised valence states could obscure the Rydberg structure as the electron kinetic energy increases.

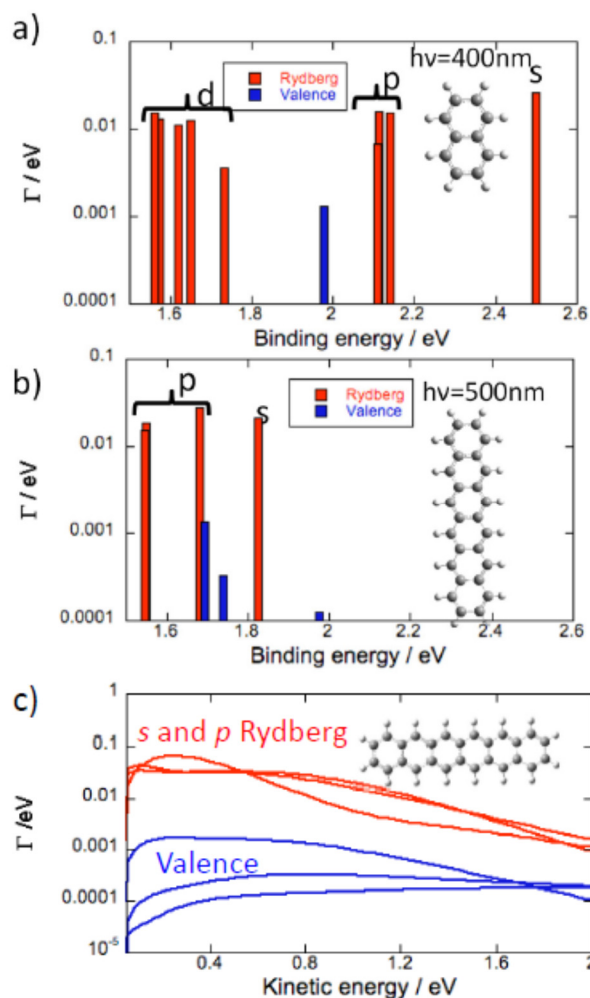


Fig. 5. Calculated photoionisation widths for the one-photon photoionisation of naphthalene by a 400nm photon (a) and hexacene by a 500nm photon (b) so that the photoelectrons have comparable kinetic energies. The widths of the valence (blue) and Rydberg (red) states are shown on a logarithmic scale for all the excited states with a binding energy between 1.5 and 2.6eV. c) Evolution of the photoionisation widths as a function of the ionized electron kinetic energy for the hexacene excited states shown in panel b.

For the 1D PAH family, we observe an increase of the photoionisation widths of the s and p_z Rydberg states with the size of the molecule (Fig. 4c). For instance the widths of the Rydberg

states of hexacene are three times larger than the ones of benzene because the Dyson orbitals of the hexacene Rydberg states are more diffuse than the ones of benzene.

3.2. Photoelectron Spectra and Angular Distributions: Coronene Comparison

On the basis of the calculations discussed in the previous section, coronene was chosen as an example of a relatively large PAH molecule where one could expect the Rydberg structure to be visible in the fs photoelectron spectra. The experimental photoelectron angular distributions (PAD) provide a stringent test of the theoretical predictions. Fig. 6(a) provides two examples of photoelectron spectra obtained for 400nm excitation at two different laser intensities, $7 \times 10^{11} \text{ Wcm}^{-2}$ and $4.6 \times 10^{12} \text{ Wcm}^{-2}$. Both spectra show simple peak structure superimposed on a featureless, decreasing background spectrum. The featureless background spectrum was observed previously for 800nm, $>3 \times 10^{12} \text{ Wcm}^{-2}$, 150 fs photoionisation and attributed to the emission of thermal electrons prior to equilibration between the electronic and vibrational degrees of freedom,[43] similar to what is observed for fullerenes.[5] No Rydberg structure was resolved in these earlier coronene fs laser experiments.

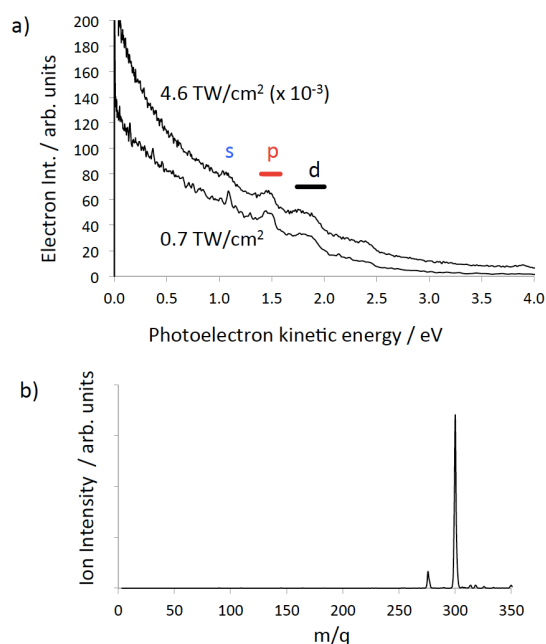


Fig. 6. Experimental data for coronene obtained with a 120 fs, 400nm laser pulse (a) Angle-integrated photoelectron spectra for two values of the laser intensity. The structure due to photoionisation of the s, p and d lowest Rydberg bands is indicated. (b) Mass spectrum obtained for $7 \times 10^{11} \text{ Wcm}^{-2}$. The small peak at 276u is due to 1,12-benzoperylene impurity.[13]

Three peaks can be clearly seen in the photoelectron spectra that are assigned to the s, p and d Rydberg bands due to the good agreement with the calculated binding energies (Fig. 2a and Table 1). In order to ensure that there is no influence in the photoelectron spectra from multiple ionisation and to minimise the thermal background and effect of high laser intensities, all further analysis was carried out for the lower laser intensity data ($7 \times 10^{11} \text{ Wcm}^{-2}$). A mass spectrum obtained under identical laser conditions is shown in Fig. 5(b), clearly showing that only the parent molecular ion and a small impurity ion peak are present. The experimental binding energies are obtained from the photoelectron kinetic energies (ϵ) by assuming that the Rydberg states are single-photon ionised: $\text{B.E.} = h\nu - \epsilon$, where ν is the laser frequency. The peaks are fitted with Gaussian functions. Fig. 7 illustrates the peak fitting for the angle-integrated spectrum that has had the background thermal distribution subtracted along with an additional featureless background for photoelectron energies < 3.1 eV, attributed to ionisation from excited valence states (see Supplementary Information for more details on the background subtraction). A single Gaussian function is used to fit the s-peak while multiple functions are used for the p and d bands. The narrow s-peak is found at a binding energy of 2.04 ± 0.02 eV. The quoted error accounts for errors in the calibration of the kinetic energy scale and peak fitting errors (± 0.01 eV) and the bandwidth of the 120 fs laser pulse (± 0.012 eV). The central p-band peak at a binding energy of 1.63 ± 0.02 eV is assigned to the p_z Rydberg state while the peaks on either side at 1.53 ± 0.02 eV, 1.71 ± 0.02 eV and 1.79 ± 0.02 eV are assigned to p_y , mixed p_x - p_y and p_x , based on comparison with the calculations. Although six peaks have been used to fit the d-band, we have refrained from assigning these peaks to different d-states and report only the range of binding energies, 1.08 eV to 1.44 eV, and the angular distributions from the sum of these fitted peaks.

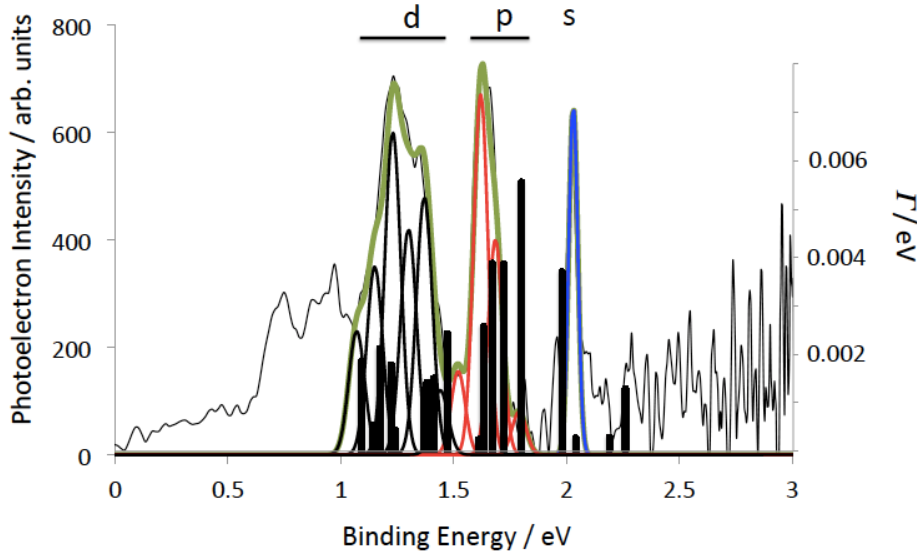


Fig. 7. Rydberg structure in the background-subtracted photoelectron spectrum of coronene measured with 400nm, 0.7 TW/cm² laser pulses. The photoelectron intensity is plotted as a function of electron binding energy. The peaks are fitted with a series of Gaussian curves: a single Gaussian for the narrow s-peak (blue) and multiple Gaussians for the p-band (4, red) and the d-band (6, black). The photoionisation widths of the excited states computed at the TDDFT/CAM-B3LYP/6-31(2+)+G(d,p) level are also shown (bars and right-hand axis).

In order to extract the PADs, the inverted VMI image is divided into 10° segments. The background is subtracted from each segment and the peak structure is fitted using the Gaussian functions shown in Fig. 7. The peak widths were constrained to be constant but the central position was allowed to vary. The extracted integrated intensities of the relevant Gaussians are plotted as a function of the angle, θ , with respect to the laser polarisation direction, in Fig. 8. The sum of p_x and p_y and of all six fitted d-peaks has been plotted.

Since the excited states are incoherently populated, the final step in the photoionisation process can simply be considered to be a single-photon ionisation from the excited states. For a single pulse of linearly polarized light interacting with a randomly oriented target this results in a PAD, $I(\theta, \varepsilon)$, for a specific photoelectron kinetic energy, ε , according to [44]

$$I(\theta, \varepsilon) = \frac{\sigma_{\text{total}}}{4\pi} (1 + \beta(\varepsilon)P_2(\cos\theta)) \quad (1)$$

where σ_{total} is the angle-integrated cross section, β is the anisotropy parameter (which takes

on values between -1 and 2), and P_2 is the second order Legendre polynomial. Equation (1) was fitted to the experimental and theoretical data (red lines in Fig. 8 show the fits to the experimental data points) to extract the value of the asymmetry parameter β . The fitted values are given in Table 2. The theoretical angular distributions were calculated assuming randomly oriented molecules, following the procedure described by Mignolet et al. and are shown as small black diamonds on the plots [6]. The computed PADs and thus the β parameter are in very good agreement with the experimental PADs, which confirms the assignment based on the binding energies.

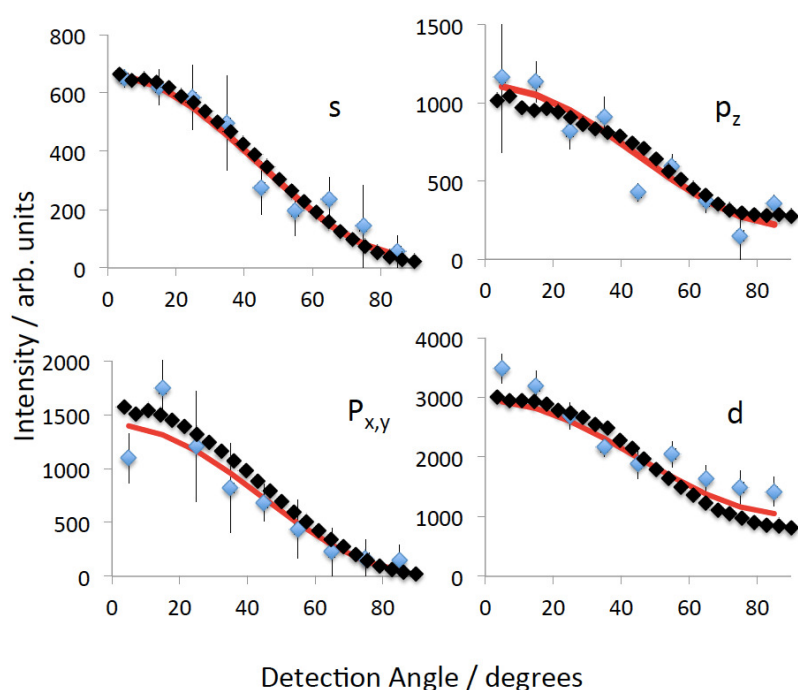


Fig. 8. Photoelectron angular distributions and fitted asymmetry parameters, β , for the coronene Rydberg peaks. The data shown for $p_{x,y}$ and d has been summed over all fitted peaks for those symmetries. Blue diamonds: experimental data, small black diamonds: calculated values, red line: fit to experimental data.

Rydberg State	Expt. B.E. / eV	Theor. B.E. / eV	ϵ / eV	β_{exp}	β_{theor}
s	2.04 ± 0.02	1.98	1.06 ± 0.01	1.7 ± 0.2	1.71
p _z	1.63 ± 0.02	1.66	1.47 ± 0.01	1.2 ± 0.2	0.96
p _x	1.79 ± 0.02	1.79	1.31 ± 0.01	1.9 ± 0.4	1.81
p _y	1.53 ± 0.02	1.63	1.57 ± 0.01	2.3 ± 0.4	1.84
p _x , p _y mix	1.71 ± 0.02	1.72	1.39 ± 0.01	2.0 ± 0.5	
Σ p _x , p _y	1.66 ± 0.09	1.63 – 1.79	1.44 ± 0.08	1.8 ± 0.3	1.83
Σ d	1.22 ± 0.19	1.09-1.47	1.88 ± 0.18	0.8 ± 0.15	0.94

Table 2: Experimental and theoretical binding energies and asymmetry parameters for coronene Rydberg states. The values for the individual p-band peaks and the summed p_{x,y} and d-bands are given.

3.3 Asymmetry Parameters

The theoretical asymmetry parameters are plotted for the 1D, 2D and 3D PAH molecules (Fig. 1) in Fig. 9. The crosses indicate the experimental values for coronene, also given in Table 2. The left hand plots are for the quasi-linear series from benzene to hexacene. The almost spherical s-state of benzene has a $\beta = 2$, independent of ϵ , which is the value expected for single photon ionisation of an atomic s-state. The other 1D PAHs do not have a spherical symmetry and the β value clearly deviates from the value of $\beta = 2$. This is indicative of the lower D_{2h} symmetry of these molecules. There is a systematic shift in the predicted minimum in β towards lower photoelectron kinetic energies as the molecular size increases and the shape of the Dyson orbitals clearly deviates from a spherical atomic s orbital (see Fig. 4a). The calculated and experimental values for C₆₀ are consistent with $\beta \approx 2$ [6] as is the calculated β for the s-states of cubane, adamantane and dodecahedrane (right hand plot). The low-lying Rydberg states of the hollow “3D” carbon molecules have an electron density distribution that is more purely atomic-like, thus perhaps justifying the introduction of the term SAMO (superatom molecular orbital) [1] to describe them. However, for cubane and adamantane, the molecules are too small to allow for significant electron density inside the cage which is a distinguishing feature of the fullerene SAMOs.

The asymmetry parameter for the p_x states of the quasi-linear series approaches a similar kinetic energy dependence, $\beta(\epsilon)$, as the molecular size increases. This is understandable since the x-axis is perpendicular to the molecular plane. The variation of the asymmetry parameter for the p_x states is similar to that of the p_z and p_y states except that it reaches a plateau around $\beta \approx 1$ while the p_z and p_y states reach plateaus around $\beta \approx 2$ (in the energy range 1-2 eV). This is also the case for the p_x state of phenanthrene and p_z state of coronene that are perpendicular to the molecular plane. In the case of coronene, it is this difference in the behaviour of the asymmetry parameter that allows the p_x , p_y and p_z peaks to be clearly assigned in the measured spectrum.

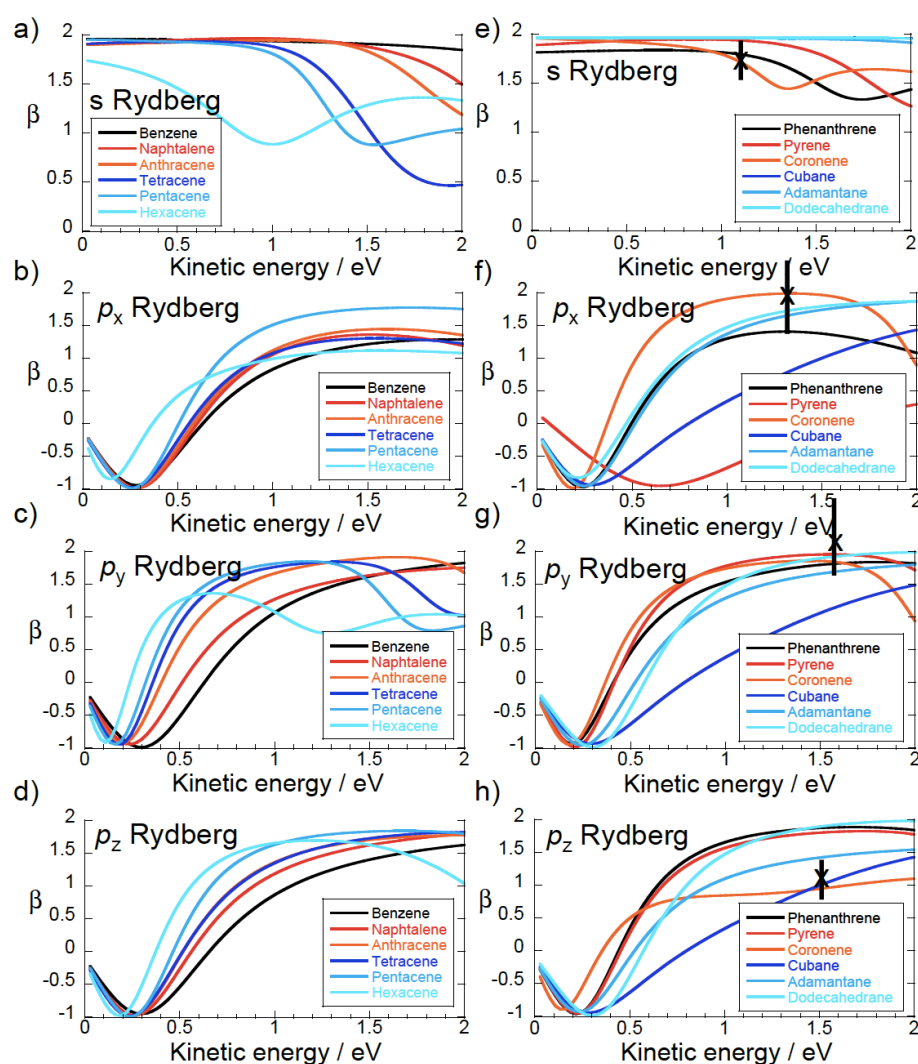


Fig. 9. Calculated β . Left; “1D” series benzene to hexacene. Right: “2D” series phenanthrene to coronene plus “3D” cubane to dodecahedrane. Crosses: experimental values for coronene.

In the quasi-two-dimensional series (phenanthrene to coronene) there is a systematic variation in both the p_x and the p_y β values, as one might expect from the molecular structures (Fig. 1). Note that for this series the arrangement of the x, y and z axes changes depending on the molecular symmetry (Fig. 1).

4. Conclusions

We report TD-DFT/CAM-B3LYP/ 6-31(2+)+G(d,p) calculations on a wide range of PAH molecules and cubic alkanes in order to probe the properties of the lowest members of diffuse molecular Rydberg states. We show the occurrence of diffuse atomic-like molecular orbitals with similarities to the “SAMOs” reported for fullerenes [6, 8] and corannulene [17]. The calculations are compared to fs photoelectron spectroscopy studies of coronene, showing excellent agreement with both the electron binding energies and the photoelectron angular distributions. The predictive nature of the calculations could help identify molecules with promising properties for electronic applications and also contribute to elucidating the role of PAHs in astrochemistry.

Conflicts of Interest

There are no conflicts of interest to declare.

Electronic Supplementary Information is available.

Acknowledgements

The authors thank A.V. Bulgakov for helpful discussions. E.B, J.O.J. and E.E.B.C. gratefully acknowledge financial support from the Leverhulme Foundation (RPF-298 “PES of hollow nanomaterials”). JOJ is a Royal Society of Edinburgh/BP Trust Research Fellow. BM and FR acknowledge support from the Fonds National de la Recherche Scientifique (FNRS), Belgium and from the Consortium des Equipements de Calcul Intensif (CECI) for computational resources (FNRS 2.5020.11) and of the FNRS research project T.0132.16.

References

1. Feng M, Zhao J, Petek H. 2008; *Science*. **320**: 359-62.
2. Johansson JO, Henderson GG, Remacle F, Campbell EEB. 2012; *Phys. Rev. Lett.* **108**: 173401.
3. Johansson JO, Bohl E, Henderson GG, Mignolet B, Dennis TJS, Remacle F, et al. 2013; *J Chem Phys.* **139**: 084309.
4. Li H, Mignolet B, Wang Z, Betsch KJ, Carnes KD, Ben-Itzhak I, et al. 2016; *J Phys Chem Lett.* **7**: 4677-82.
5. Johansson JO, Campbell EEB. 2013; *Chemical Society Reviews.* **42**: 5661-71.
6. Mignolet B, Johansson JO, Campbell EEB, Remacle F. 2013; *Chemphyschem.* **14**: 3332-40.
7. Voora VK, Cederbaum LS, Jordan KD. 2013; *J Phys Chem Lett.* **4**: 849-53.
8. Zhao J, Feng M, Yang JL, Petek H. 2009; *ACS Nano.* **3**: 853-64.
9. Omont A. 2016; *A&A.* **590**: A52.
10. Feng X, Pisula W, Müllen K. 2009; *Pure Appl Chem.* **81**: 2203-24.
11. Tielens AGGM. 2008; *Annu Rev Astronomy and Astrophys.* **46**: 289-337.
12. Robin MB. *Higher Excited States of Polyatomic Molecules*. New York: Academic Press; 1974.
13. Bréchnignac P, Garcia GA, Falvo C, Joblin C, Kokkin D, Bonnamy A, et al. 2014; *J. Chem. Phys.* **141**: 164325.
14. Kuthirummal N, Weber PM. 2003; *Chem Phys Lett.* **378**: 647-53.
15. Hammonds M, Pathak A, Sarre PJ. 2009; *PhysChemChemPhys.* **11**: 4458-64.
16. Malloci G, Mulas G, Joblin C. 2004; *A&A.* **426**: 105-17.
17. Zoppi L, Martin-Samos L, Baldrige KK. 2015; *PhysChemChemPhys.* **17**: 6114-21.
18. Yanai T, Tew DP, Handy NC. 2004; *Chem Phys Lett.* **393**: 51-7.
19. Peach MJG, Benfield P, Helgaker T, Tozer DJ. 2008; *J Chem Phys.* **128**: 44118.
20. Gunina AO, Krylov AI. 2016; *J. Phys. Chem. A.* **120**: 9841-56.
21. Sonk JA, Schlegel HB. 2011; *J. Phys. Chem. A.* **115**: 11832-40.
22. Pickup BT. 1977; *Chem Phys.* **19**: 193-208.

23. Seabra GM, Kaplan IG, Zakrzewski VG, Ortiz JV. 2004; J Chem Phys. **121**: 4143-55.
24. Oana CM, Krylov AI. 2007; J Chem Phys. **127**: 234106-14.
25. Oana CM, Krylov AI. 2009; J Chem Phys. **131**: 124114-15.
26. Reisler H, Krylov AI. 2009; Int Rev Phys Chem. **28**: 267-308.
27. Chang B-Y, Hoetzlein RC, Mueller JA, Geiser JD, Houston PI. 1998; Rev Sci Instrum. **69**: 1665-70.
28. Roberts GM, Nixon JL, Lecointre J, Wrede E, Verlet JR. 2009; Rev Sci Instrum. **80**: 053104.
29. Henderson GG. Femtosecond Laser Studies of Fullerenes and Nanotubes. PhD Thesis, University of Edinburgh; 2012.
30. Dribinski V, Ossadtchi A, Mandelshtam VA, Reisler H. 2002; Rev. Sci. Instrum. **73**: 2634-42.
31. Schyja V, Lang T, Helm H. 1998; Phys. Rev. A. **57**: 3692-7.
32. George GA, Morris GC. 1968; J Mol Spectrosc. **26**: 67-71.
33. Goto M, Hansen K. 2011; J. Chem. Phys.. **135**: 214310.
34. [12/05/2017]. Available from: <http://webbook.nist.gov/chemistry/>.
35. Schmidt W. 1977; J Chem Phys. **66**: 828-45.
36. Zhang J, Pei L, Kong W. 2008; J. Chem. Phys. **128**: 104301.
37. Clar E, Robertson JM, Schlogl R, Schmidt W. 1981; J Am Chem Soc. **103**: 1320-8.
38. Akiyama I, Li KC, leBreton PR, Fu PP, Harvey RG. 1976; Tetrahedron. **32**: 2563.
39. Clar E, Schmidt W. 1977; Tetrahedron. **33**: 2093.
40. Bishof P, Eaton PE, Gleiter R, Heilbronner E, Jones TB, Musso H, et al. 1978; Helv Chim Acta. **61**: 547-57.
41. Worrell C, CVerhoeven JW, Speckamp WN. 1974; Tetrahedron. **30**: 3525-31.
42. Bohl E, Sokół KP, Mignolet B, Thompson JOF, Johansson JO, Remacle F, et al. 2015; J. Phys. Chem. A. **119**: 11504-8.
43. Kjellberg M, Bulgakov AV, Goto M, Johansson O, Hansen K. 2010; J. Chem. Phys. **133**: 074308.
44. Cooper J, Zare RN. 1968; J. Chem. Phys. **48**: 942-3.