

**PHS PUBLIC ACCESS**

Author manuscript

*Dis Esophagus*. Author manuscript; available in PMC 2017 September 09.

Published in final edited form as:

*Dis Esophagus*. 2016 October ; 29(7): 707–714. doi:10.1111/dote.12493.**Worldwide Esophageal Cancer Collaboration: clinical staging data**

T. W. Rice<sup>1</sup>, C. Apperson-Hansen<sup>2</sup>, L. M. DiPaola<sup>1</sup>, M. E. Semple<sup>1</sup>, T. E. M. R. Lerut<sup>3</sup>, M. B. Orringer<sup>4</sup>, L.-Q. Chen<sup>5</sup>, W. L. Hofstetter<sup>6</sup>, B. M. Smithers<sup>7</sup>, V. W. Rusch<sup>8</sup>, B. P. L. Wijnhoven<sup>9</sup>, K. N. Chen<sup>10</sup>, A. R. Davies<sup>11</sup>, X. B. D'Journo<sup>12</sup>, K. A. Kesler<sup>13</sup>, J. D. Luketich<sup>14</sup>, M. K. Ferguson<sup>15</sup>, J. V. Räsänen<sup>16</sup>, R. van Hillegersberg<sup>17</sup>, W. Fang<sup>18</sup>, L. Durand<sup>19</sup>, W. H. Allum<sup>20</sup>, I. Ceconello<sup>21</sup>, R. J. Cerfolio<sup>22</sup>, M. Pera<sup>23</sup>, S. M. Griffin<sup>24</sup>, R. Burger<sup>25</sup>, J.-F. Liu<sup>26</sup>, M. S. Allen<sup>27</sup>, S. Law<sup>28</sup>, T. J. Watson<sup>29</sup>, G. E. Darling<sup>30</sup>, W. J. Scott<sup>31</sup>, A. Duranceau<sup>32</sup>, C. E. Denlinger<sup>33</sup>, P. H. Schipper<sup>34</sup>, H. Ishwaran<sup>35</sup>, and E. H. Blackstone<sup>1</sup>

<sup>1</sup>Cleveland Clinic, Cleveland, Ohio, USA <sup>2</sup>Case Western Reserve University, Cleveland, Ohio, USA <sup>3</sup>University Ziekenhuizen Leuven, Leuven, Belgium <sup>4</sup>University of Michigan, Ann Arbor, Michigan, USA <sup>5</sup>West China Hospital of Sichuan University, Chengdu, Sichuan, China <sup>6</sup>University of Texas MD Anderson Hospital, Houston, Texas, USA <sup>7</sup>University of Queensland, Princess Alexandra Hospital, Brisbane, Queensland, Australia <sup>8</sup>Memorial Sloan-Kettering Cancer Center, New York, New York, USA <sup>9</sup>Erasmus Medical Center, Rotterdam, The Netherlands <sup>10</sup>Beijing Cancer Hospital, Beijing, China <sup>11</sup>Guy's & St Thomas' Hospitals, London, UK <sup>12</sup>Hôpital Nord, Marseille, France <sup>13</sup>Indiana University Medical Center, Indianapolis, Indiana, USA <sup>14</sup>University of Pittsburgh Medical Center, Pittsburgh, Pennsylvania, USA <sup>15</sup>Department of Surgery, The University of Chicago, Chicago, Illinois, USA <sup>16</sup>Helsinki University Hospital, Helsinki, Finland <sup>17</sup>University Medical Center Utrecht, Utrecht, The Netherlands <sup>18</sup>Shanghai Chest Hospital, Shanghai, China <sup>19</sup>Hospital de Clinicas, University of Buenos Aires, Buenos Aires, Argentina <sup>20</sup>Royal Marsden NHS Foundation Trust, London, UK <sup>21</sup>University of São Paulo, São Paulo, Brazil <sup>22</sup>University of Alabama at Birmingham, Birmingham, Alabama, USA <sup>23</sup>Hospital Universitario del Mar, Barcelona, Spain <sup>24</sup>University of Newcastle upon Tyne, Newcastle, UK <sup>25</sup>Groote Schuur Hospital, University of Cape Town, Cape Town, South Africa <sup>26</sup>Fourth Hospital of Hebei Medical University, Shijiazhuang, Hebei, China <sup>27</sup>Mayo Clinic, Rochester, Minnesota, USA <sup>28</sup>University of Hong Kong Medical Center, Queen Mary Hospital, Hong Kong, China <sup>29</sup>University of Rochester, Rochester, New York, USA <sup>30</sup>Toronto General Hospital, Toronto, Ontario, Canada <sup>31</sup>Fox Chase Cancer Center, Philadelphia, Pennsylvania, USA <sup>32</sup>University of Montreal, Montreal, Quebec, Canada <sup>33</sup>Medical University of South Carolina, Charleston, South Carolina, USA <sup>34</sup>Oregon Health and Science University, Portland, Oregon, USA <sup>35</sup>University of Miami, Miami, Florida, USA

Address correspondence to: Thomas W. Rice, MD, Department of Thoracic and Cardiovascular Surgery, Cleveland Clinic, 9500 Euclid Avenue/Desk JJ-40, Cleveland, OH 44195, USA. [ricet@ccf.org](mailto:ricet@ccf.org).

*Author contributions:* Conception or design of the experiment(s), or collection and analysis or interpretation of data (all authors). Drafting the manuscript or revising its intellectual content (Rice, Apperson-Hansen, and Blackstone). Approval of the final version of the submitted manuscript (all authors).

**SUPPORTING INFORMATION**

Additional Supporting Information may be found in the online version of this article.

## SUMMARY

To address uncertainty of whether clinical stage groupings (cTNM) for esophageal cancer share prognostic implications with pathologic groupings after esophagectomy alone (pTNM), we report data—simple descriptions of patient characteristics, cancer categories, and non-risk-adjusted survival—for clinically staged patients from the Worldwide Esophageal Cancer Collaboration (WECC). Thirty-three institutions from six continents submitted data using variables with standard definitions: demographics, comorbidities, clinical cancer categories, and all-cause mortality from first management decision. Of 22,123 clinically staged patients, 8,156 had squamous cell carcinoma, 13,814 adenocarcinoma, 116 adenosquamous carcinoma, and 37 undifferentiated carcinoma. Patients were older (62 years) men (80%) with normal body mass index ( $18.5\text{--}25\text{ mg/kg}^2$ , 47%), little weight loss ( $2.4 \pm 7.8\text{ kg}$ ), 0–1 ECOG performance status (67%), and history of smoking (67%). Cancers were cT1 (12%), cT2 (22%), cT3 (56%), cNO (44%), cMO (95%), and cG2–G3 (89%); most involved the distal esophagus (73%). Non-risk-adjusted survival for squamous cell carcinoma was not distinctive for early cT or cN; for adenocarcinoma, it was distinctive for early versus advanced cT and for cNO versus cN+. Patients with early cancers had worse survival and those with advanced cancers better survival than expected from equivalent pathologic categories based on prior WECC pathologic data. Thus, clinical and pathologic categories do not share prognostic implications. This makes clinically based treatment decisions difficult and pre-treatment prognostication inaccurate. These data will be the basis for the 8th edition cancer staging manuals following risk adjustment for patient characteristics, cancer categories, and treatment characteristics and should direct 9th edition data collection.

## Keywords

cancer staging; data sharing; decision-making; prognostication; survival

---

## INTRODUCTION

Initial therapeutic decisions for patients with esophageal cancer, the goal of which is to maximize survival while minimizing cancer treatment harm, are driven largely by clinical cancer staging information. Assignment of clinical stage grouping (cTNM) has, by tradition, shared pathologic stage groupings (pTNM) corresponding to cTNM, but whether prognostic significance of pTNM is shared with cTNM is uncertain.

To address this uncertainty, a six-continent Worldwide Esophageal Cancer Collaboration (WECC) was mounted to collect patient characteristics, clinical esophageal cancer categories, and all-cause mortality to (i) test the hypothesis that clinical and pathologic categories share the same prognostic implications; (ii) facilitate pre-treatment prognostication; (iii) improve clinical decision-making; and (iv) prepare for the 8th edition of the cancer staging manuals following risk adjustment. In this paper, we simply report the descriptive dataset of patient characteristics and cancer categories of individuals with clinically staged cancers and non-risk-adjusted survival that begin to address these aims.

## PATIENTS AND METHODS

### Data

In 2012, 79 institutions were invited to participate in WECC, aimed at constructing refined data-driven esophageal cancer staging for the 8th edition of the cancer staging manuals. They were invited based on known volumes, indication that they had accessible data, and location around the world. Of these, 41 institutions obtained local ethics-board approval of databases and executed data-use agreements with Cleveland Clinic. Data were requested in completely de-identified form (Health Insurance Portability and Accountability Act research standards) for analysis, using a set of required variables with standard definitions. Variables included demographics, comorbidities, cancer categories, cancer treatment, and time-related outcomes. The Case Cancer Institutional Review Board of Case Western Reserve University and the Cleveland Clinic Institutional Review Board approved the entire project. This paper reports results of clinical data from 33 institutions whose data were submitted by September 30, 2014, and were cleaned and adjudicated (Table A1 in Appendix).

### Patients

At these institutions, of 22,654 patients (supporting information Table S1) with epithelial cancers, the majority were older men with normal body mass index, no weight loss, and 0–1 Eastern Cooperative Oncology Group (ECOG) performance status. Comorbidities were present in a minority of patients, with cardiopulmonary comorbidities predominating. Among the 22,654 patients, 22,123 had clinical staging data available before treatment. These data revealed that patients with pure adenocarcinoma were older than those with pure squamous cell carcinoma (Table 1), were far less likely to be female, were considerably larger, and were more likely to have diabetes, coronary artery disease, and hypertension; however, they were in better ECOG status and had normal FVC. Although six continents are represented, most patients in the dataset were treated in North America, Europe, and Asia. Patients with adenocarcinoma lived predominantly in the West and those with squamous cell carcinoma in the East.

### Endpoint

The endpoint was all-cause mortality from the first management decision. Median potential follow-up,<sup>1</sup> if there were no deaths, was 8.9 years (25% >13.4 years, 10% >20 years), but considering deaths in this elderly population with a rapidly lethal cancer, overall median follow-up was 1.6 years; median follow-up for surviving patients was 2.5 years, with 25% followed more than 5.1 years and 10% more than 8.4 years.

### Data analysis

For analysis, patients with adenosquamous and undifferentiated carcinoma (supporting information Table S2) were considered in both the squamous cell carcinoma and adenocarcinoma datasets. Survival was estimated using the Kaplan–Meier method, and these estimates are accompanied by 68% confidence limits, equivalent to  $\pm 1$  standard error. Survival has been simply stratified by a number of patient characteristics and cancer categories, with no risk adjustment. The hazard function for death was estimated by a

parametric temporal decomposition method (for additional details, see <http://www.lerner.ccf.org/qhs/software/hazard>).<sup>2</sup> Continuous variables are summarized by mean  $\pm$  standard deviation and categorical variables by frequency and percentage.

## RESULTS

### Clinical cancer categories

Histopathologic cell type was squamous cell carcinoma in 8,156, adenocarcinoma in 13,814, adenosquamous carcinoma in 116, and undifferentiated carcinoma in 37. Approximately a third of all cancers were confined to the esophageal wall (cT2 or less) for both squamous cell carcinoma and adenocarcinoma (Table 2 and supporting information Tables S3 and S4). Fewer than half the patients were free of regional lymph node metastasis (cN0), and few cancers had distant metastases (cM). The majority of cancers were G2/G3. Adenocarcinomas were located predominantly in the lower esophagus, and squamous cell carcinomas in the middle and lower esophagus. Otherwise, cancer categories differed only modestly.

### Non-risk-adjusted survival

Overall survival was 98, 74, 36, and 24% at 30 days and 1, 5, and 10 years, respectively (supporting information Fig. S1). For both histopathologic cell types, risk of death peaked at 1 year, then gradually decreased and plateaued by about 5 years to a near constant rate of 8% per year (supporting information Fig. S2).

**Clinical categories (cTNM)**—Survival was similar for patients with cTis and cT1 cancers, but better for those with adenocarcinoma than squamous cell cancer (Fig. 1). It decreased with increasing cT for cT2-4a cancers. Survival decreased with increasing cN for adenocarcinoma but not for squamous cell carcinoma (Fig. 2). These decreases were much more distinctive with increasing cT for squamous cell carcinoma than for adenocarcinoma when stratified by cN0 (because of the better survival of patients with cTis-cT1 adenocarcinomas) (Fig. 3) and cN+ (Fig. 4). Survival was poor in the presence of distant metastases (cM1) (Fig. 5). Generally, patients with early cancers had worse survival, and those with advanced cancers better survival, than expected from equivalent pathologic categories based on prior WECC data.

**Other cancer categories**—Survival decreased with increasing histologic grade for G1-4 cancers (supporting information Fig. S3); however, it was considerably better for patients with G1 adenocarcinomas than those with squamous cell carcinoma. Survival increased with a more distal location of cancer within the esophagus (supporting information Fig. S4).

**Other characteristics**—Survival decreased with advancing age (supporting information Fig. S5) and was worse for men with squamous cell carcinoma than for women, but similar between sexes for adenocarcinoma (supporting information Fig. S6). Survival was highly heterogeneous among institutions (supporting information Fig. S7).

## DISCUSSION

### Appropriateness of shared stage categories

Comparing survival based on clinical cancer categories to that of equivalent pathologic categories based on esophagectomy alone for the 7th edition of the cancer staging manuals,<sup>3,4</sup> it is evident that prognostic implications for clinical categories will not be equivalent to those of pathologic categories, contrary to our initial hypothesis. The prognosis for these clinically staged early cancers was clearly worse, indicating that cTNM for these cancers was understaged compared to pTNM. This is particularly troublesome for therapeutic decisions about endoscopic therapies performed under the assumption that the cancer is early stage, without regional nodal or distant metastases. Prognostication for these early clinically staged cancers will be overly optimistic. Conversely, apparently advanced cTNM cancers carry a somewhat better prognosis than equivalent pTNM cancers. In part, this may be due to clinically overstaging early cancers and in part to the effect of neoadjuvant and adjuvant therapy for more advanced stage cancers. This is troublesome because it may expose patients with clinically overstaged early cancers and non-responders to unnecessary or ineffective neoadjuvant therapy.

### Principal findings

Clinical staging appeared to be adequate for separating early cTis-1NOMO cancers from more advanced cancers, with survival better and more distinctive for adenocarcinoma than squamous cell carcinoma, but discrimination among early cancers was poor. Discrimination among advanced cancers was slightly better, but of questionable practical value. These observations highlight the deficiencies of current clinical staging.

### WECC and data assemblage

WECC data for the 7th edition staging manuals was based on pathologic staging of patients undergoing esophagectomy alone.<sup>3-6</sup> This new WECC effort included collecting clinical staging data for patients undergoing all treatments. The number of patient characteristic variables was greater and the data more complete than in the prior WECC effort. Thus, this was a global effort of considerable magnitude across geography, institutions, patients, cancer categories, and treatments. These data will be the basis for the 8th edition cancer staging manuals following risk adjustment for all these variables.

### Clinical patient characteristics

In this WECC experience, esophageal cancer was found to be a disease of older men, although more so for adenocarcinoma than squamous cell carcinoma. Because the majority of patients underwent treatment with curative intent, most had good to excellent performance status, and no weight loss. Comorbidities were numerous and clinically significant; collection of these data was essential for risk adjustment of all-cause mortality.

### Clinical cancer categories

The majority of cancers were locally advanced, with invasion into the adventitia (cT3) and metastases to regional lymph nodes (cN+). However, except for cancers so advanced that

only palliative therapy was offered, there were a sufficient number of patients to provide a wide spectrum of clinically staged esophageal cancers.

Histologic grade 2 and 3 predominated in both cell types. There was a smaller proportion of grade 1 cancers in this dataset than in the prior WECC effort,<sup>1</sup> because it includes more than esophagectomy-only patients. G4 cancers were uncommon. Location was predominately lower thoracic esophagus; few patients had adenocarcinoma of the middle thoracic esophagus and rarely of the upper thoracic esophagus. Distribution of location for squamous cell carcinoma, although skewed to the middle and lower thoracic esophagus, will be sufficient to permit analysis of the effect of location on risk-adjusted survival. No patient with cervical esophageal cancer was included in the dataset.

### Non-risk-adjusted survival

The endpoint for this study was all-cause mortality. This was chosen because it is a hard endpoint not requiring interpretation. Recording multiple patient comorbidities will permit extensive risk adjustment, which provides a truer reflection of death due to cancer than the softer endpoint of disease-specific mortality.<sup>7-9</sup>

Overall survival was similar for squamous cell carcinoma and adenocarcinoma. This surprising fact reflects important differences in patient characteristics and cancer categories between these groups. Except for cTisNOM0 and cT1NOM0 cancers, unadjusted survival was more distinctive when combining cT with cN. Survival was distinctive for histologic grades cG1-G4 and location. Regardless of histopathologic cell type, survival curves for cancer categories ‘pinched’ together compared with pathologic staging.<sup>3</sup> This ‘regression toward the mean’ has many possible explanations, including (i) understaging of early clinical cancers accentuated by the ceiling of cTis; (ii) failure to use, or ineffectual use of, staging modalities such as endoscopic mucosal resection (EMR), EUS-FNA (endoscopic ultrasound-directed fine needle aspiration), and CT-PET for suspected early cancers; (iii) overstaging of advanced clinical cancers due to a floor of cT4b, cN3, and cM1; and (iv) unpredictability of effectiveness of neoadjuvant treatment (downstaging) of advanced clinical cancers, resulting in intermediate survival for some of these cancers that have poor pretreatment prognosis. This highlights the need for risk adjustment and a type of multivariable analysis that accounts for treatment effects as well as patient and cancer categories.

### Strengths and limitations

Currently, this is the best attempt at providing worldwide clinical esophageal cancer staging data. However, clinical staging was not uniform among centers or across continents, and these heterogeneities generated heterogeneous survival. Patients treated in North America, Europe, and Asia predominated. Unlike most registry data, WECC collected more patient characteristics, cancer categories, and specific treatments. However, values for some variables were not recorded (missing data). Patients included in the study were undoubtedly biased away from metastatic cancer and palliative treatment. Data were similarly limited for untreatable patients, such as those with T4b and M1 cancers.

The dataset also reflects temporal changes in treatment from esophagectomy alone to neoadjuvant therapy for advanced cancer. Nevertheless, older data on esophagectomy alone, which may seem a limitation, are crucial for developing pathologic staging of advanced esophageal cancers.

A limitation of this pure data presentation is that it does not account for patient variables that affect all-cause mortality; the interplay among TNM, histopathologic cell type, histologic grade, and cancer location in part due to the unique lymphatic anatomy of the esophagus; and the confounding of treatment effects, temporal factors, etiology, diagnosis, and clinical decision-making around the world.

### **Clinical staging implications**

Today, esophagogastroduodenoscopy (EGD) and biopsy are necessary for determining location, histopathologic cell type, and histologic grade; EMR and EUS for cT; EUS-FNA for cN; and CT-PET for cM and cN; supplemented by ancillary imaging, aspiration, or biopsy.

Comprehensive clinical staging as described is problematic because of varying cost limitations and regional availability of staging modalities. Minimal worldwide standards for clinical staging must be set with worldwide adherence expected. Recording how clinical stage was obtained is necessary to determine quality of clinical staging. There is a need for more accurate and precise clinical staging modalities. Addition of other patient characteristics and cancer categories will permit better treatment decisions and more accurate pre-treatment prognostication.

## **CONCLUSIONS**

Comparing these clinical data with WECC pathologic data for the 7th edition cancer staging manuals,<sup>3</sup> it became evident that clinical categories did not share the same prognostic implications as pathologic categories after esophagectomy alone. The pinching of survival data makes pre-treatment prognostication difficult, providing overly optimistic prognostication for patients with early-stage cancers and overly pessimistic prognostication for those with advanced clinical stage cancers. This makes clinical decision-making difficult.

These clinical staging data will be the basis for the 8th edition cancer staging manuals following risk adjustment for many confounding variables. These findings should direct data collection for the 9th edition. This is a milestone in the clinical staging of esophageal cancer and provides direction for future advancements.

### **Supplementary Material**

Refer to Web version on PubMed Central for supplementary material.

### **Acknowledgments**

The authors thank Brian Kohlbacher for assistance with figure annotation and Tess Parry for manuscript preparation.



## APPENDIX

Table A1

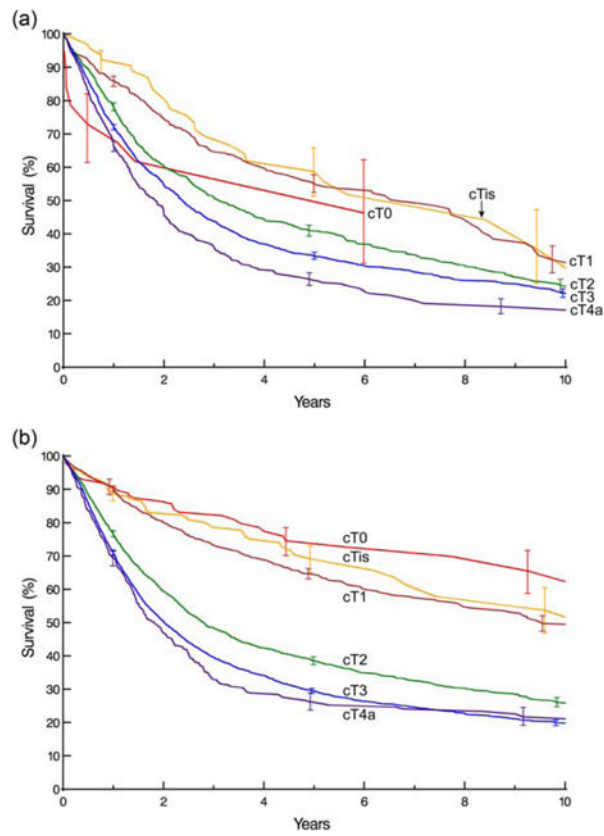
Worldwide Esophageal Cancer Collaboration: Participating institutions and investigators

Institution	Location	Investigators
Beijing Cancer Hospital, Peking University Cleveland Clinic	Beijing, China Cleveland, OH, USA	Ken N. Chen Thomas W. Rice Eugene H. Blackstone
Case Western Reserve University Erasmus Medical Center	Cleveland, OH, USA Rotterdam, The Netherlands	Carolyn Apperson-Hansen Bas P.L. Wijnhoven, Jan van Lanschot, Sjoerd Lagarde
Fourth Hospital of Hebei Medical University Fox Chase Cancer Center	Shijiazhuang, Hebei, China Philadelphia, PA, USA	Jun-Feng Liu Walter J. Scott Donna Edmondson
Groote Schuur Hospital, University of Cape Town Guy's & St. Thomas' Hospitals	Cape Town, South Africa London, UK	Riette Burger Andrew R. Davies, Janine Zylstra
Helsinki University Hospital	Helsinki, Finland	Jari V. Räsänen, Jarmo A. Salo, Yvonne Sundstrom
Hospital Universitario del Mar	Barcelona, Spain	Manuel Pera
Hôpital Nord	Marseille, France	Xavier B. D'Journo
Indiana University Medical Center	Indianapolis, IN, USA	Kenneth A. Kesler
University of Texas MDAnderson Hospital	Houston, TX, USA	Wayne L. Hofstetter Arlene Correa, Stephen G. Swisher
Mayo Clinic	Rochester, MN, USA	Mark S. Allen
Medical University of South Carolina	Charleston, SC, USA	Chad E. Denlinger
Memorial Sloan-Kettering Cancer Center	New York, NY, USA	Valerie W. Rusch
University of Queensland, Princess Alexandra Hospital	Brisbane, Australia	B. Mark Smithers, David Gotley, Andrew Barbour, Iain Thomson
University of Newcastle upon Tyne	Newcastle upon Tyne, UK	S. Michael Griffin, Jon Shenfine
Oregon Health & Science University	Portland, OR, USA	Paul H. Schipper, John G. Hunter
Royal Marsden NHS Foundation Trust	London, UK	William H. Allum
Shanghai Chest Hospital	Shanghai, China	Wentao (Vincent) Fang
Toronto General Hospital	Toronto, ON, Canada	Gail E. Darling
University Zeikenhuizen Leuven	Leuven, Belgium	Tony E.M.R. Lerut, Phillipe R. Nafteux
University Medical Center Utrecht	Utrecht, The Netherlands	Richard van Hillegersberg
University of Alabama at Birmingham	Birmingham, AL, USA	Robert J. Cerfolio
Hospital de Clinicas, University of Buenos Aires	Buenos Aires, Argentina	Luis Durand, Roberto De Antón
The University of Chicago, Department of Surgery	Chicago, IL, USA	Mark K. Ferguson
University of Hong Kong Medical Center, Queen Mary Hospital	Hong Kong, China	Simon Law
University of Michigan	Ann Arbor, MI, USA	Mark B. Orringer, Becky L. Marshall
University of Montreal	Montreal, Quebec, Canada	Andre Duranceau, Susan Howson
University of Pittsburgh Medical Center	Pittsburgh, PA, USA	James D. Luketich, Arjun Pennathur, Kathy Lovas
University of Rochester	Rochester, NY, USA	Thomas J. Watson
University of São Paulo	São Paulo, Brazil	Ivan Ceconello
West China Hospital of Sichuan University	Chengdu, Sichuan, China	Long-Qi Chen

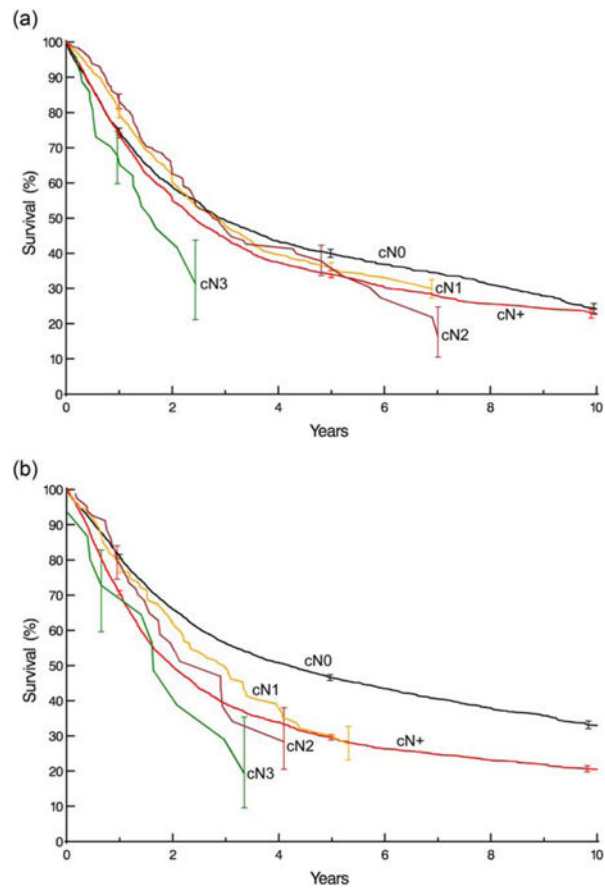


## References

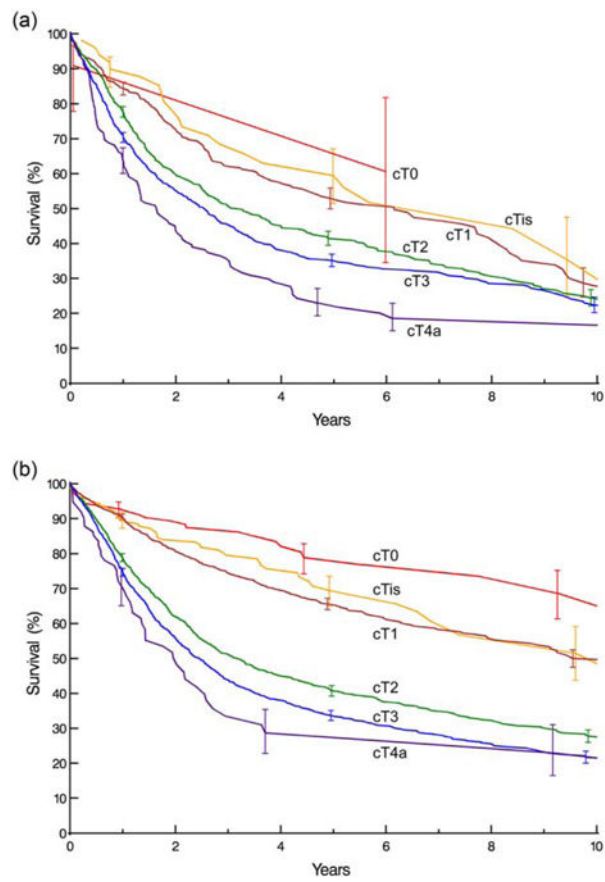
1. Goldman AI. Eventcharts: visualizing survival and other timed-event data. *Am Stat.* 1992; 46:13–8.
2. Blackstone EH, Naftel DC, Turner ME Jr. The decomposition of time-varying hazard into phases, each incorporating a separate stream of concomitant information. *J Am Stat Assoc.* 1986; 81:615–24.
3. Rice TW, Rusch VW, Apperson-Hansen C, et al. Worldwide Esophageal Cancer Collaboration. *Dis Esophagus.* 2009; 22:1–8. [PubMed: 19196264]
4. Rice TW, Rusch VW, Ishwaran H, Blackstone EH. Worldwide Esophageal Cancer Collaboration. Cancer of the esophagus and esophagogastric junction; data-driven staging for the seventh edition of the American Joint Committee on Cancer/International Union Against Cancer Staging Manuals. *Cancer.* 2010; 116:3763–73. [PubMed: 20564099]
5. Edge, SB. Byrd, DR. Compton, CC. Fritz, AG. Greene, FL., Trotti, A., editors. American Joint Committee on Cancer Staging Manual. 7th. New York: Springer-Verlag; 2010.
6. Sobin, LH. Gospodarowicz, MK., Wittekind, C., editors. TNM classification of malignant tumours International Union Against Cancer. 7th. Oxford, UK: Wiley-Blackwell; 2009.
7. van Leeuwen PJ, Kranse R, Hakulinen T, et al. Disease-specific mortality may underestimate the total effect of prostate cancer screening. *J Med Screen.* 2010; 17:204–10. [PubMed: 21258131]
8. Black WC, Haggstrom DA, Welch HG. All-cause mortality in randomized trials of cancer screening. *J Natl Cancer Inst.* 2002; 94:167–73. [PubMed: 11830606]
9. Lauer MS, Blackstone EH, Young JB, Topol EJ. Cause of death in clinical research: time for a reassessment? *J Am Coll Cardiol.* 1999; 34:618–20. [PubMed: 10483939]



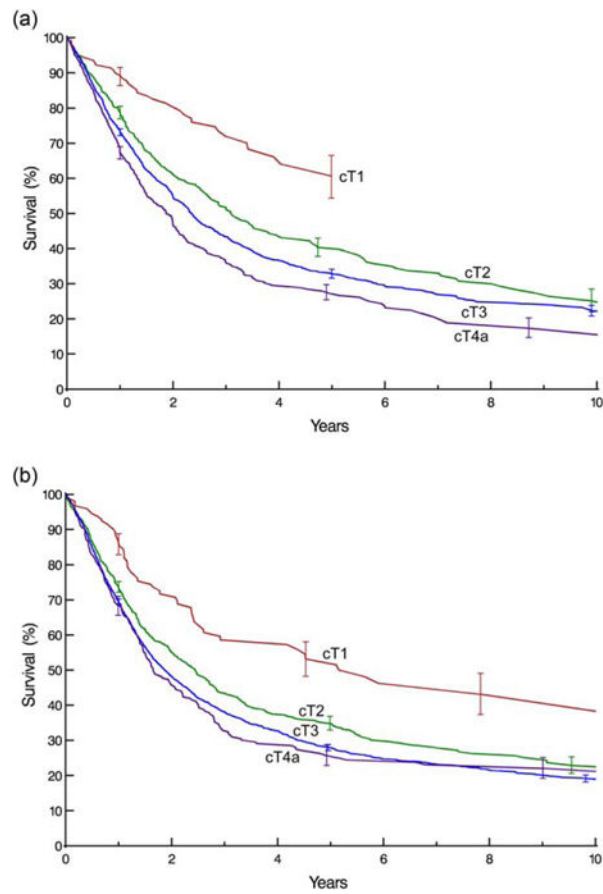
**Fig. 1.** Survival by clinical cT category. Kaplan–Meier estimates accompanied by vertical bars representing 68% confidence limits, equivalent to  $\pm 1$  standard error. (A) Squamous cell carcinoma and (B) adenocarcinoma. [Color figure can be viewed in the online issue, which is available at [wileyonlinelibrary.com](http://wileyonlinelibrary.com).]



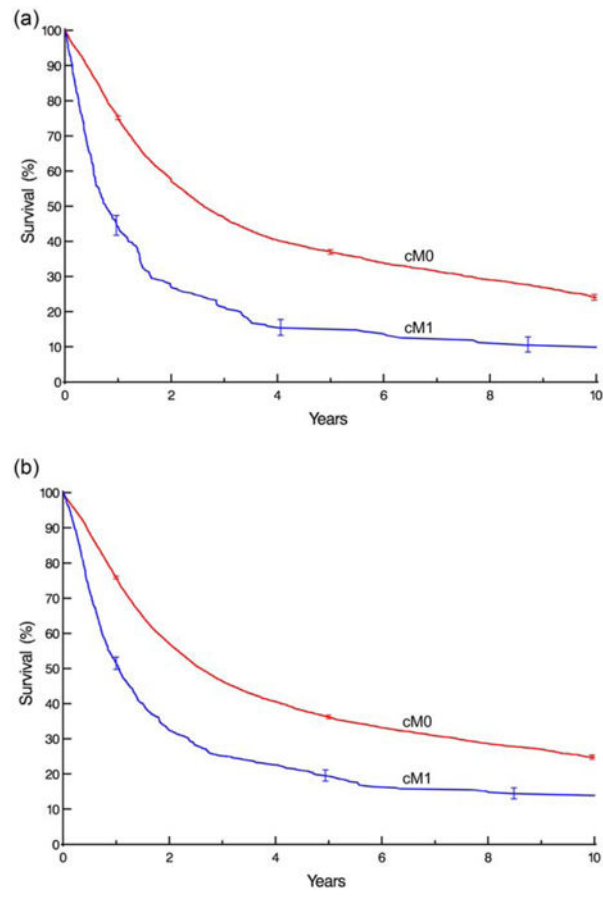
**Fig. 2.** Survival by clinical cN category. Format is as in Fig. 1. (A) Squamous cell carcinoma and (B) adenocarcinoma. [Color figure can be viewed in the online issue, which is available at [wileyonlinelibrary.com](http://wileyonlinelibrary.com).]



**Fig. 3.** Survival by cT category for cN0 cancers. Format is as in Fig. 1. (A) Squamous cell carcinoma and (B) adenocarcinoma. [Color figure can be viewed in the online issue, which is available at [wileyonlinelibrary.com](http://wileyonlinelibrary.com).]



**Fig. 4.** Survival by cT category for cN+ cancers. Format is as in Fig. 1. (A) Squamous cell carcinoma and (B) adenocarcinoma. [Color figure can be viewed in the online issue, which is available at [wileyonlinelibrary.com](http://wileyonlinelibrary.com).]



**Fig. 5.** Survival by clinical cM category. Format is as in Fig. 1. (A) Squamous cell carcinoma and (B) adenocarcinoma. [Color figure can be viewed in the online issue, which is available at [wileyonlinelibrary.com](http://wileyonlinelibrary.com).]

**Table 1**

Patient characteristics of those with pure squamous cell carcinoma and pure adenocarcinoma of the esophagus

Characteristic <sup>†</sup>	Squamous cell carcinoma (total <i>n</i> = 8,156)		Adenocarcinoma (total <i>n</i> = 13,814)	
	<i>n</i> *	No. (%) or mean ± SD	<i>n</i> *	No. (%) or mean ± SD
<i>Demographics</i>				
Age (years)	8,077	61 ± 9.9	13,373	63 ± 10
Female	8,156	2,455 (30)	13,812	1,882 (14)
Body mass index (mg/kg <sup>2</sup> )	4,427	22 ± 3.7	7,226	27 ± 5.1
Weight loss (kg)	4,590	1.9 ± 4.9	6,726	2.8 ± 9.2
<i>Comorbidities</i>				
ECOG performance status	3,104		3,178	
0		739 (24)		1,156 (36)
1		549 (18)		1,755 (55)
2		1,269 (41)		178 (5.6)
3		540 (17)		80 (2.5)
4		7 (0.23)		11 (0.35)
Diabetes	7,436	322 (4.3)	11,606	1,430 (12)
IDDM	7,365	58 (0.79)	11,127	185 (1.7)
NIDDM	7,365	193 (2.6)	11,127	766 (6.9)
Coronary artery disease	4,263	269 (6.3)	6,117	993 (16)
Arrhythmia	3,862	79 (2)	4,127	119 (2.9)
Hypertension	5,734	1,120 (20)	9,168	2,753 (30)
Peripheral arterial disease	4,811	114 (2.4)	6,937	235 (3.4)
Smoker	5,094	3,664 (72)	9,457	6,439 (68)
Past	4,412	1,442 (33)	7,553	2,993 (40)
Current	4,412	1,540 (35)	7,553	1,542 (20)
FEV1 (% of predicted)	3,823	96 ± 21	5,605	95 ± 20
FVC (% of predicted)	3,468	110 ± 21	3,922	100 ± 18
Creatinine (μmol/L)	2,686	76 ± 17	1,448	75 ± 28
Bilirubin (μmol/L)	2,583	12 ± 6.2	1,019	11 ± 6.8
<i>Decade</i>	8,129		13,798	
1970–1979		127 (1.6)		45 (0.33)
1980–1989		1,291 (16)		427 (3.1)
1990–1999		1,427 (18)		3,441 (25)
2000–2009		3,185 (39)		7,614 (55)
2010–2014		2,099 (26)		2,271 (16)
<i>Continent</i>	8,156		13,814	
North America		1,937 (24)		7,814 (57)
Europe		1,473 (18)		4,143 (30)
Asia		4,041 (50)		360 (2.6)
Australia		597 (7.3)		1,280 (9.3)
South America		80 (0.98)		209 (1.5)



Characteristic <sup>†</sup>	<u>Squamous cell carcinoma (total n = 8,156)</u>		<u>Adenocarcinoma (total n = 13,814)</u>	
	<i>n</i> <sup>*</sup>	No. (%) or mean ± SD	<i>n</i> <sup>*</sup>	No. (%) or mean ± SD
Africa		28 (0.34)		8 (0.058)

\* Patients with data available.

<sup>†</sup> Patient characteristics of those with adenosquamous and undifferentiated carcinoma are shown in supporting information Table S2. ECOG, Eastern Cooperative Oncology Group; FEV1 (%), forced expiratory volume in 1 second (percent of predicted); FVC (%), forced vital capacity (percent of predicted); IDDM, insulin-dependent diabetes mellitus; NIDDM, non-insulin-dependent diabetes mellitus; SD, standard deviation.

Author Manuscript

Author Manuscript

Author Manuscript

Author Manuscript

**Table 2**

Clinical cancer categories of patients with pure squamous cell carcinoma and pure adenocarcinoma of the esophagus

Category	Squamous cell carcinoma ( <i>n</i> = 8,156) No. (%)	Adenocarcinoma ( <i>n</i> = 13,814) No. (%)
<i>cT</i>		
cT0	19 (0.3)	160 (1.5)
cTis	67 (1.1)	214 (2)
cT1	556 (8.9)	1,469 (14)
cT2	1,327 (21)	2,346 (22)
cT3	3,297 (53)	6,094 (57)
cT4a	1,000 (16)	385 (3.6)
cTX	1,890	3,146
<i>cN</i>		
cN0	2,522 (40)	5,009 (47)
cN+	3,785 (60)	5,725 (53)
cN1	1,520 (79) <sup>†</sup>	256 (73) <sup>‡</sup>
cN2	371 (19) <sup>†</sup>	82 (23) <sup>‡</sup>
cN3	45 (2.3) <sup>†</sup>	15 (4.2) <sup>‡</sup>
cNX	1,849	3,080
<i>cM</i>		
cM0	7,850 (96)	12,981 (94)
cM1	306 (3.8)	833 (6.0)
<i>Grade</i> <sup>§</sup>		
cG1	307 (9.2)	370 (11)
cG2	1,494 (45)	1,367 (42)
cG3	1,519 (46)	1,553 (47)
cG4 <sup>¶</sup>	0 (0)	0 (0)
cGX	4,836	10,524
<i>Location</i>		
cUpper	990 (13)	97 (0.83)
cMiddle	3,573 (48)	456 (3.9)
cLower	2,938 (39)	11,137 (95)
cLocationX	655	2,124

Clinical cancer categories of patients with adenosquamous and undifferentiated carcinoma are shown in supporting information Table S4.

<sup>†</sup>Data available for 1,936 patients.

<sup>‡</sup>Data available for 353 patients.

<sup>§</sup>G1, well differentiated; G2, moderately well differentiated; G3, poorly differentiated; G4, undifferentiated.

<sup>¶</sup>G4 cancers are reported in supporting information Table S4.