

Metagenomic Evaluation of Bacteria from Voles

Katja A. Koskela,¹ Laura Kalin-Mänttari,¹ Heidi Hemmilä,¹ Teemu Smura,²
Paula M. Kinnunen,^{1,3,*} Jukka Niemimaa,⁴ Heikki Henttonen,⁴ and Simo Nikkari¹

Abstract

Voles (Arvicolinae, Rodentia) are known carriers of zoonotic bacteria such as *Bartonella* spp. and *Francisella tularensis*. However, apart from *F. tularensis*, the bacterial microbiome of voles has not previously been determined in Finland and rarely elsewhere. Therefore, we studied liver samples from 61 voles using 16S ribosomal RNA gene PCR analysis, followed by Sanger sequencing. Twenty-three of these samples were also studied with tag-encoded pyrosequencing. The samples originated from 21 field voles (*Microtus agrestis*), 37 tundra voles (*Microtus oeconomus*), and 3 bank voles (*Myodes glareolus*). With the more conventional 16S rDNA PCR analysis, 90 (33%) of the recovered 269 sequence types could be identified to genus level, including *Bartonella*, *Francisella*, *Mycoplasma*, *Anaplasma*, and *Acinetobacter* in 31, 15, 9, 9, and 9 sequences, respectively. Seventy-five (28%) matched best with sequences of uncultured bacteria, of which 40/75 could be classified to the order Clostridiales and, more specifically, to families Lachnospiraceae and Ruminococcaceae. Pyrosequencing from 23 samples revealed comparable and similar results: clinically relevant bacterial families such as Mycoplasmataceae, Bartonellaceae, Anaplasmataceae, and Francisellaceae were recognized. These analyses revealed significant bacterial diversity in vole livers, consisting of distinct and constant sequence patterns reflecting bacteria found in the intestinal gut, but including some known zoonotic pathogens as well. The molecular bacterial sequence types determined with the two different techniques shared major similarities and verified remarkable congruency between the methods.

Keywords: diagnostics, rodents, PCR, zoonotic

Introduction

VOLLES ARE CARRIERS of zoonotic bacteria such as *Francisella tularensis* (Rossow et al. 2014c), *Bartonella* spp. (Buffet et al. 2012, 2013), *Anaplasma* spp. (Kallio et al. 2014), and *Mycoplasma* spp. (Brown et al. 2001). In Finland, tularemia (caused by *F. tularensis*) is an endemic disease, and voles are considered to play a role as amplification hosts preceding human epidemics (Rossow et al. 2014a).

16S rRNA gene sequencing has provided a strong alternative to traditional culture-based identification of bacteria (Weisburg et al. 1991) in clinical microbiology (Salipante et al. 2013) and medicine (Winglee et al. 2014), as well as in extensive projects such as the Human Microbiome Project (Human Microbiome Project Consortium 2012).

Broad-range 16S rDNA PCR (Br-PCR) is based on universal primers detecting conserved regions in the chromosome

coding 16S rRNA genes (Schmidt and Relman 1994), followed by bacterial identification by Sanger sequencing of intervening variable and hypervariable DNA regions. Alternatively, 16S rRNA gene sequences can be retrieved by using tag-encoded primers targeting hypervariable regions, followed by the use of next-generation sequencing technology (e.g., pyrosequencing) that generates hundreds of thousands of sequences in a single run (Shendure and Ji 2008). Both techniques enable not only identification of previously known bacterial species but also discovery of DNA sequences of previously uncharacterized bacteria. Recently, microbial populations have been studied using next-generation techniques to investigate, for example, ticks in Japan (Qiu et al. 2014) and voles in France (Razzauti et al. 2015).

The main objective of this work was to determine the vole microbiome present in livers and to identify potential zoonotic pathogens of vole communities in Finland. Other

¹Centre for Military Medicine, Helsinki, Finland.

²Department of Virology, University of Helsinki, Helsinki, Finland.

³Defence Command Finland, Plans and Policy Division, Helsinki, Finland.

⁴Natural Resources Institute Finland, Vantaa, Finland.

*Current affiliation: Finnish Food Safety Authority Evira, Helsinki, Finland.

objectives were to compare the two screening methods, conventional Br-PCR and tag pyrosequencing, and to evaluate their suitability for investigating complex, polymicrobial bacterial DNA samples.

Materials and Methods

Sample collection

Altogether, 60 snap-trapped voles with splenomegaly originating from three locations in Finnish Lapland (Kolari, Pisavaara, and Pyhätunturi) and two locations in Central Finland (Konnevesi and Pieksämäki) were studied. Altogether, 21 field voles (*Microtus agrestis*), 36 tundra voles (*Microtus oeconomus*), and three bank voles (*Myodes glareolus*) were included (Table 1). In addition, one tundra vole from Lapland without splenomegaly served as a control. Three voles from Central Finland had been previously identified positive for *F. tularensis* by PCR (Rossow et al. 2014c). Liver was chosen as the optimal organ for screening based on our earlier studies (Rossow et al. 2014c).

Traps were set in the evening and collected soon after sunrise. During the trappings, either in September in Lapland or early May or October in Central Finland, temperatures remained between 0°C and 10°C. Therefore, voles caught in the morning were fresh. They were dissected or frozen immediately.

Ethics statement

No ethical permit was needed because the Finnish Act on the Use of Animals for Experimental Purposes (62/2006) and the Finnish Animal Experiment Board (16th May, 2007) do not classify snap-trapping as an animal experiment. However, a permit (23/5713/2001) for capturing protected species (as bycatch) was granted by the Finnish Ministry of the Environment; none of our target species belonged to the protected ones.

DNA extraction

DNA was extracted from about 20 mg of liver tissue with the Wizard Genomic DNA Purification Kit (Promega). Additionally, three negative controls containing nuclease-free water (W4502; Sigma-Aldrich) instead of sample were used to screen for bacterial DNA contamination in extraction reagents.

Conventional Br-PCR analysis

DNA from 61 vole samples was used for amplification of a partial bacterial 16S rRNA gene sequence (~550 bp, 8F-575R) with universal primers, fD1mod (Kotilainen et al. 1998) and 16S1RR-B (Wilbrink et al. 1998). To assess potential contaminant sequences from extraction and PCR reagents, two different contamination libraries were established: First, for investigating exogenous bacterial DNA in extraction reagents, three negative extraction controls were analyzed. Second, to study the presence of contaminating DNA in PCR reagents, nuclease-free water was used as template in no template control (NTC) reactions, utilizing two different reaction mixtures. To avoid false-positive results in PCR, careful preventive measures were taken (Kwok and Higuchi 1989, Lo and Chan 2006). (Materials and Methods section in the Supplementary Data; Supplementary Data are available online at www.liebertpub.com/vbz).

Br-PCR amplification reaction mixture in the volume of 50 µL contained Gene Amp® PCR Buffer (Life Technologies [LT]), 200 µM of each dNTP (LT), 0.4 µM of each primer, 4 mM MgCl₂ (LT), 2 U AmpliTaq Gold® DNA Polymerase LD (LT), 5 µL template, and nuclease-free water (W4502; Sigma-Aldrich). PCRs were performed using the DNA Engine (PTC-200) Peltier Thermal Cycler (Bio-Rad Life Sciences). Reaction conditions were 3 min at 94°C, followed by 30 cycles of amplification at 94°C for 30 s, 60°C for 30 s, and 72°C for 30 s, and the final extension step at 72°C for 10 min.

PCR products of the correct size were cloned to *Escherichia coli* vectors using the TOPO TA Cloning Kit according to the manufacturer's instructions (Invitrogen Corporation). Randomly selected individual colonies were amplified directly by PCR using the M13 priming sites. Amplicons of the expected size were sequenced using Applied Biosystems Dye Terminator (v.3.1) sequencing kit (LT) and reactions were run on 3100xl Capillary Sequence Analyzer (LT) at the University of Helsinki (Sequencing Core Facility). Sequences were edited with the Sequencher 5.1 program (Gene Codes Corporation).

In addition to BLAST analysis (<http://blast.ncbi.nlm.nih.gov/Blast.cgi>), sequence types were classified using the Ribosomal Database Project (RDP) naïve Bayesian Classifier, Version 2.6 (Wang et al. 2007), with 80% bootstrap threshold value. Chimeric sequences were detected with the DECIPHER tool (Wright et al. 2012). Sequences sharing

TABLE 1. NUMBER OF VOLES BY SPECIES AND TRAPPING LOCALITY

Trapping location (trapping year)	Number of samples per vole species			Total no.
	<i>Microtus agrestis</i> , field vole	<i>Microtus oeconomus</i> , tundra vole	<i>Myodes glareolus</i> , bank vole	
Central Finland				
Konnevesi, 2009	10 ^a			10
Pieksämäki, 2008	5			5
Lapland ^b				
Kolari, 2011	4	17 ^c		21
Pisavaara, 2011		11	1	12
Pyhätunturi, 2011	2	9	2	13
Total no.	21	37	3	61

^aThree voles highly positive for *Francisella tularensis*.

^bLocated in northern Finland.

^cNo splenomegaly in one vole.

over 99% similarity with contaminant sequences found from controls were omitted (Renko et al. 2013).

Tag pyrosequencing

Liver DNA samples from 22 voles with and one without splenomegaly were used for tag-encoded pyrosequencing analysis of the 16S rRNA gene (V1-V3 region, 27F-518R), as described previously (Hanski et al. 2012), except 35–45 cycles were used in PCR runs. Additionally, three negative extraction controls pooled together were studied. Sequencing of PCR products using the 454 platform was done at Institute of Biotechnology, University of Helsinki (Finland). The sample-specific sequences were uploaded into the RDP Classifier (release 11.2) (Wang et al. 2007) to identify the bacterial classes and genera, with 80% as the threshold value. Sequences present in the pooled negative extraction control were omitted from the final results. Samples were considered positive for a specific bacterial sequence type when the number of sequence reads exceeded 10.

Further sequence data analyzing was done using mothur (Schloss et al. 2009) according to workflow described by Schloss et al. (2011). Before analyzing the sequences, the tag, primer sequences, and low-quality sequences (*i.e.*, ambiguous nucleotides, homopolymers longer than eight nucleotides, average quality score less than 35) were removed. Sequences were aligned to Greengenes reference database (DeSantis et al. 2006); chimeras were detected using UCHIME algorithm (Edgar et al. 2011). Chimeric sequences and sequences present in the pooled negative extraction control were removed from the dataset. Cutoff of 0.03 was used for the clustering of operational taxonomic units (OTUs). Alpha diversity was estimated using Shannon and inverse Simpson indexes. The Yue and Clayton measure of dissimilarity was used for dendrogram construction and for the Principal Coordinate Analysis (PCoA).

Results

With conventional Br-PCR, 408 randomly selected clone sequences from the 61 vole liver samples were sequenced. Fourteen sequences of poor quality were excluded from the final results. In addition, one plastid sequence and one sequence deciphered as a chimera were removed from the final results. Furthermore, 12 and 96 of the sequences represented the host species, bank vole and field vole, respectively (Supplementary Table S1). These sequences and a total of 15 sequences that shared over 99% similarity with sequences from the contaminant libraries were omitted from the final results. Of the remaining 269 sequence types, 33% (90/269) were identifiable at least to genus level, including *Bartonella*, *Francisella*, *Mycoplasma*, *Anaplasma* (including *Ehrlichia phagocytophila*) (Dumler et al. 2001), and *Acinetobacter* in 31, 15, 9, 9, and 9 sequences, respectively (Table 2). Furthermore, 28% (75/269) matched best with uncultured bacteria. Sequence analysis with the RDP Classifier revealed that over half (40/75) of those were classified to the order Clostridiales and, more specifically, to families Lachnospiraceae and Ruminococcaceae (Supplementary Table S1). Interestingly, a noteworthy group of sequences comprising 33% (89/269) of all the data shared 89–93% similarity with *Mycoplasma* spp. and could only be classified as bacteria using RDP.

Altogether, 23 vole liver-derived DNA samples and a pooled extraction control sample were also analyzed using 16S rRNA gene pyrosequencing. Contaminant sequence types present in the pooled extraction control were omitted from the final results (Supplementary Table S2). Majority of the remaining reads represented Francisellaceae (28%) and Bartonellaceae (17%) (Fig. 1). Other common families were Anaplasmataceae (9%), Lachnospiraceae (7%), Ruminococcaceae (6%), Porphyromonadaceae (6%), and Mycoplasmataceae (4%). In addition, 11% of the sequence reads belonged to an artificial unclassified taxon comprising unidentifiable sequences. The amount of sequence reads obtained varied from 3580 reads to over 24 000 reads per sample (Fig. 2a). The relevant sequence types detected from the vole samples are presented in Figure 2b. In general, Br-PCR and pyrosequencing gave comparable results. This can be seen in Table 3, where the most common findings are compared. In 17 samples of 23, the most abundant findings were in congruence.

Using conventional Br-PCR, 27 cloned sequences from three negative extraction controls were obtained and these represented 11 sequence types (Supplementary Table S3). BLAST analysis revealed that 12 of the sequence types had 100% identity with *Propionibacterium acnes*. To determine DNA remnants present in PCR reagents, altogether 529 sequences from 19 NTCs were analyzed using conventional Br-PCR. Sequences were cloned and sequenced also from NTCs from which no amplification product was seen in the agarose gel (Supplementary Fig. S1). The main contaminant sequence type identified were *Lactococcus lactis*, uncultured *Burkholderiaceae* bacterium, *Phyllobacterium* sp., *Schlegelella* sp./*Leptotrix* sp., uncultured *Sulfurospirillum* sp., uncultured Ruminococcaceae bacterium, *Altererythrobacter* sp., *Propionibacterium* sp., and *Clostridium* sp. (Supplementary Table S4). With 454 pyrosequencing, the main bacterial findings in the pooled negative extraction control belonged to genera *Halomonas*, *Shewanella*, *Pseudomonas*, *Citrobacter*, *Bacteroides*, and *Enterococcus* (Supplementary Table S2).

Shannon and inverse Simpson diversity indexes for each sample are shown in Table 4. There were no statistically significant differences between bacterial diversities of different vole species. Heatmap of the relative abundance of bacterial taxons is shown in Supplementary Figure S2. No clear-cut differences between bacterial communities of *M. agrestis* and *M. oeconomus* were observed in the heatmap.

The Yue and Clayton measure of dissimilarity between the bacterial community structures was estimated and the resulting distance matrix was used for dendrogram construction (Supplementary Fig. S3) and for the PCoA. While parsimony and unweighted UniFrac methods suggested no statistically significant clustering in respect to vole species or the geographic region of the sampled voles, the weighted UniFrac method (that takes the branch lengths of the dendrogram into account) suggested differences between the clustering ($p < 0.001$).

PCoA plot is shown in Figure 3. Analysis of molecular variance (AMOVA) was conducted to determine if the spatial separation in the PCoA plot was statistically significant, that is, voles of the same species or voles sampled from the same location shared similar communities and similar abundance levels. There were no statistically significant differences between the bacterial communities of different vole species. However, AMOVA suggested differences when comparing voles captured in Pisavaara and Kolari.

TABLE 2. TAXONOMIC DISTRIBUTION OF BACTERIAL SEQUENCE TYPES DETECTED FROM VOLE LIVER TISSUE WITH CONVENTIONAL BR-PCR UTILIZING BLAST SEARCH TOOL

Phylum	Class	Order	Family	Genus	Number of 16S rRNA gene sequences	Number of voles	
Proteobacteria							
	Alphaproteobacteria		Rhizobiales	Bartonellaceae	<i>Bartonella</i>	31	9
		Rickettsiales	Anaplasmataceae	<i>Anaplasma</i>		9	4
				Uncultured <i>alphaproteobacterium</i>		2	2
	Betaproteobacteria		Burkholderiales	Comamonadaceae	<i>Comamonas</i>	2	1
				Ralstoniaceae	<i>Ralstonia</i>	2	2
	Gammaproteobacteria		Thiotrichales	Francisellaceae	<i>Francisella</i>	15 ^a	3
		Pseudomonadales	Moraxellaceae	<i>Acinetobacter</i>		9	6
				Pseudomonadaceae	<i>Pseudomonas</i>	2	2
		Enterobacteriales	Enterobacteriaceae	<i>Buttiauxella</i>		2	1
		Oceanospirillales	Halomonadaceae	Uncultured <i>Chromohalobacter</i>		2	2
	Epsilonproteobacteria		Campylobacterales	Helicobacteraceae	<i>Helicobacter</i>	1	1
Firmicutes							
	Mollicutes		Mycoplasmatales	Mycoplasmataceae	<i>Mycoplasma</i>	9	5
	Clostridia		Clostridiales	Ruminococcaceae	Uncultured <i>Ruminococcus</i>	1	1
				Eubacteriaceae	Uncultured <i>Eubacterium</i>	1	1
				Uncultured Firmicutes bacterium		9 ^b	7
Actinobacteria							
	Actinobacteria		Actinomycetales	Corynebacteriaceae	Uncultured <i>Corynebacterium</i>	1	1
				Micrococcaceae	<i>Micrococcus</i>	1	1
				Brevibacteriaceae	<i>Brevibacterium</i>	1	1
				Dermabacteraceae	<i>Brachybacterium</i>	1	1
Undetermined and nonbacterial sequence types ^c					Number of 16S rRNA gene sequences	Number of voles	
Uncultured bacterium					39 ^b	15	
Uncultured organism					2	1	
Closest match: <i>Mycoplasma</i> spp. (89–93%)					89	17	
Closest match: uncultured bacterium (76–96%)					36 ^b	20	
Closest match: uncultured Firmicutes bacterium (95%)					2	1	

^aSequences derived from voles highly positive for *F. tularensis* (Rossow et al. 2014c).

^bSix sequences derived from the control vole without splenomegaly: two uncultured Firmicutes bacteria, two uncultured bacteria, two closest match: uncultured bacteria (94–95%).

^cPercentage of sequence similarity to previously published sequences is indicated in brackets, given only for values <97%.

Finally, nonparametric T-test (White et al. 2009) was used to determine whether there are differently represented OTUs between vole species or between *M. oeconomus* voles captured in Pisavaara and Kolari. Between the vole species, this analysis suggested differences in the abundance of *Francisella* ($p=0.0439$), unclassified Firmicutes ($p=0.0409$), Clostridiales ($p=0.0010$), and Lachnospiraceae ($p=0.0048$). Between *M. oeconomus* voles captured in Pisavaara and Kolari, the analysis suggested different abundance levels for *Oscillibacter* ($p=0.0343$) and *Mycoplasma* ($p=0.0060$).

Discussion

We identified bacterial sequence types in vole liver samples using two metagenomic techniques targeting 16S rRNA genes: conventional Br-PCR and tag pyrosequencing. We also compared the two methods and studied their suitability for investigating complex, polymicrobial bacterial DNA samples.

Sixty-one vole samples were investigated using the more conventional Br-PCR analysis. The main clinically relevant

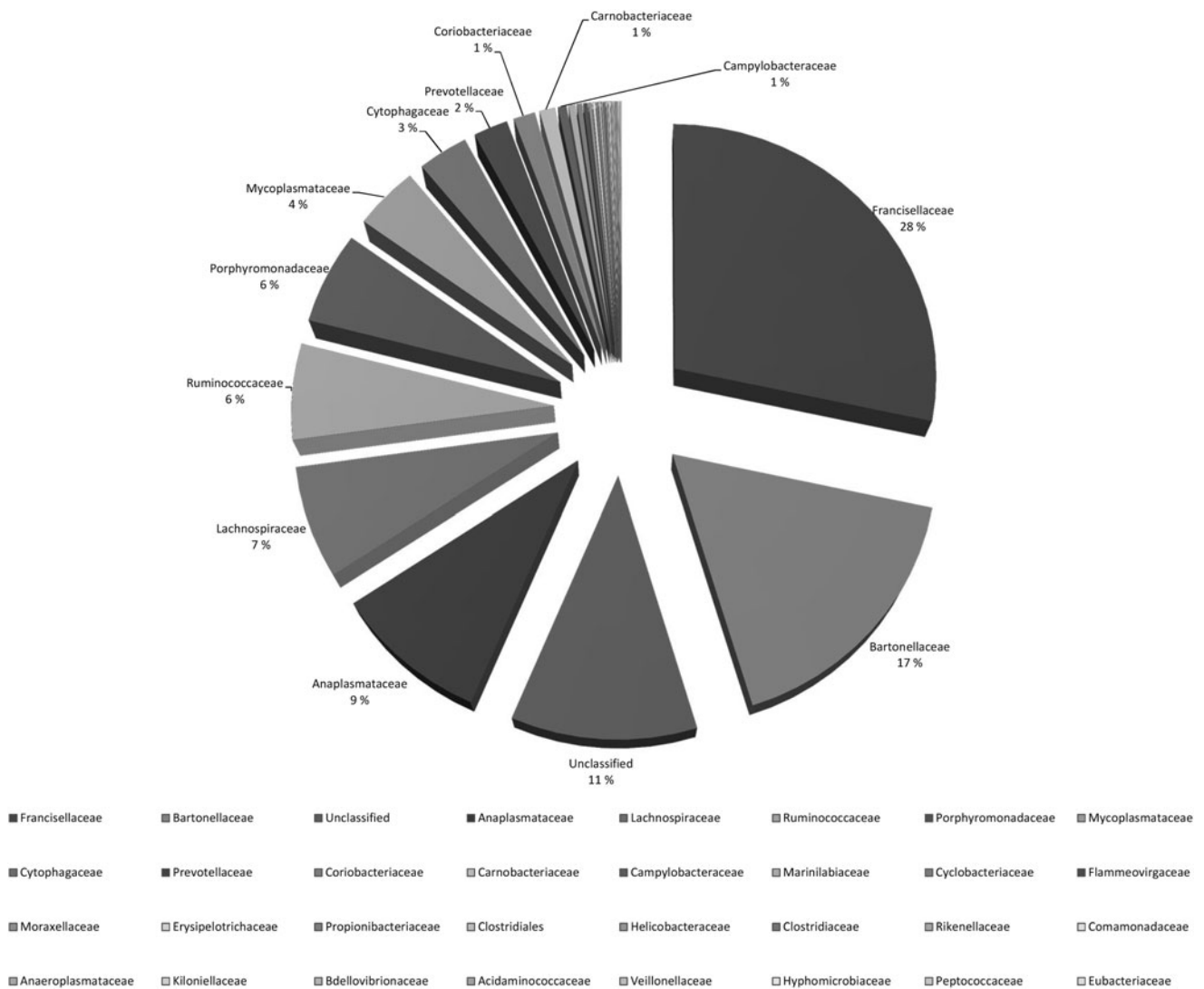


FIG. 1. Relative percentage of bacterial families from 23 vole DNA samples based on the number of sequence reads with pyrosequencing. Contaminant sequences (*Halomonas*, *Shewanella*, and contaminant sequences based on our negative extraction control) and sequences in which the total number of reads per bacterial family was fewer than one hundred are omitted. Only bacterial families with read percentages >1% are indicated.

bacterial sequences detected belonged to the genera *Bartonella*, *Francisella*, *Mycoplasma*, *Anaplasma*, and *Acinetobacter*. Based on these findings, 23 samples were selected for pyrosequencing. These included one sample from the control vole without splenomegaly and three samples previously identified positive for *F. tularensis* (Rossow et al. 2014c), as well as an extraction control.

Using pyrosequencing, the bacterial composition of four samples lacked any clinically relevant pathogens, containing mainly members of the families Ruminococcaceae, Porphyromonadaceae, and Lachnospiraceae, in addition to an artificial unclassified taxon (Fig. 2b and Supplementary Table S1). This bacterial pattern was very similar to the control vole's microflora and was perceived as intestinal normal flora. Sixteen samples, however, had a completely distinctive bacterial profile, with families such as Mycoplasmataceae, Bartonellaceae, Anaplasmataceae, or Francisellaceae being highly predominant. In the two remaining samples, Bartonellaceae was present in one sample according

to the conventional Br-PCR, but pyrosequencing revealed mainly sequence types belonging to Corynebacteriaceae and Moraxellaceae families. In addition, vole TUL25, which had sequence types sharing 89–93% similarity with *Mycoplasma* spp., with conventional Br-PCR, gave an unclear bacterial profile with pyrosequencing and hence almost 90% of the reads belonged to the unclassified group. The results of three *Francisella*-positive samples corresponded with the findings of Rossow et al. (2014c): sequences of the highly positive voles, TUL32 and TUL33, were dominated by Francisellaceae, whereas one vole (TUL37), exhibiting lower positivity in *F. tularensis*-specific PCR, also contained, for example, Anaplasmataceae besides Francisellaceae. Overall, pyrosequencing analysis of 21 liver samples gave congruent results to those of the Br-PCR (Table 3).

Mycoplasma spp., more specifically *M. moatsii*- and rarely *M. penetrans*-specific sequence types, were found moderately often in voles from both Central Finland and Lapland. *Mycoplasma* infection is a leading cause of pneumonia

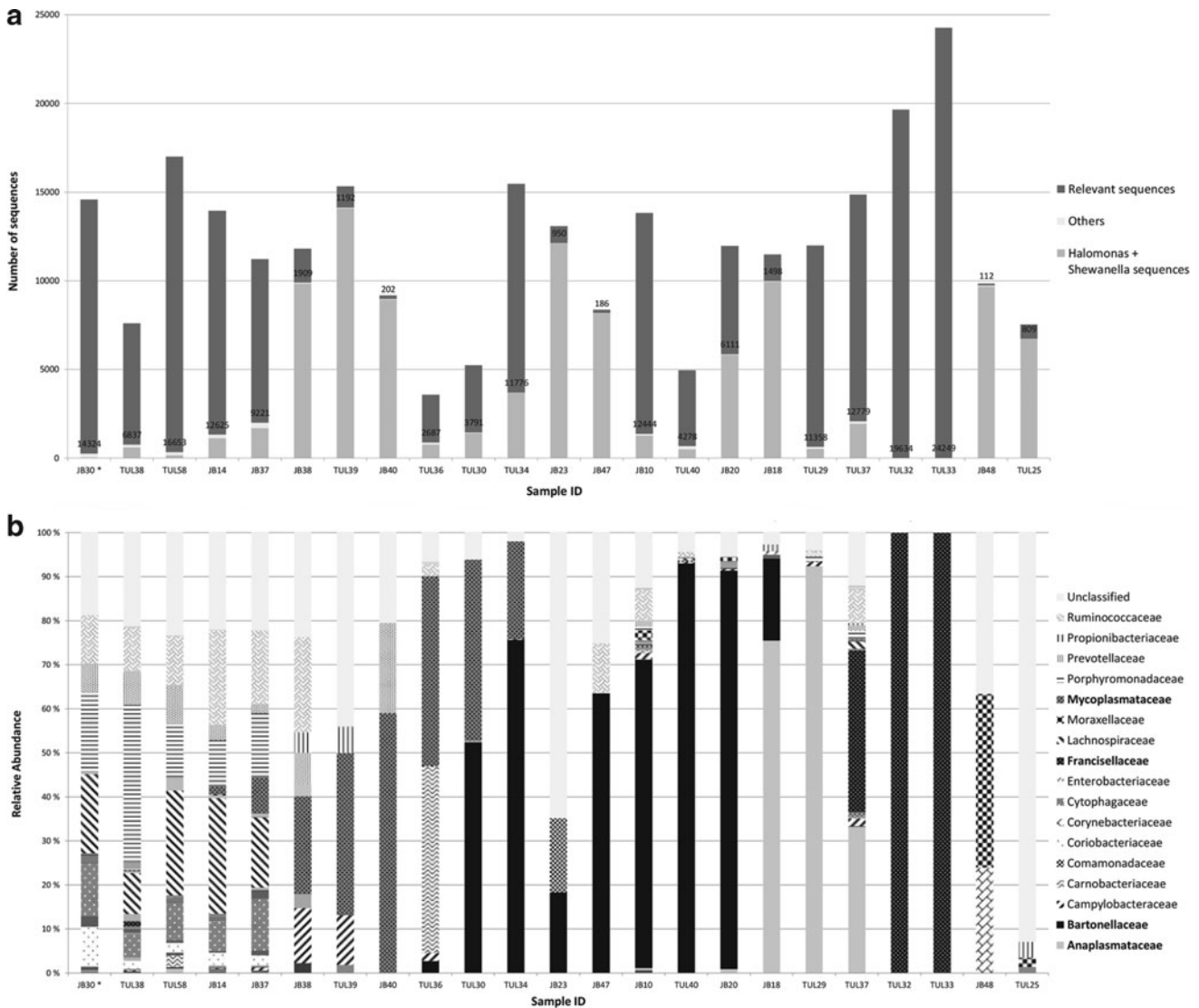


FIG. 2. Sequence types detected from vole liver tissue with pyrosequencing. **(a)** Total number of reads per sample, including relevant sequences, contaminant sequences (*Halomonas* and *Shewanella*), and other sequences consisting of other contaminant sequences based on the negative extraction control, as well as sequences in which the number of reads was fewer than 10 per sample. The number of relevant sequence types varied from 112 to 24,249 reads per sample. **(b)** Relative abundance of relevant sequence types represented at family level. *Control vole (no splenomegaly visible).

worldwide in humans (Ishiguro et al. 2013) and other species, including laboratory rodents (Lindsey and Cassell 1973, Sun et al. 2013). Wild rodents commonly carry *Mycoplasma* spp. (Sashida et al. 2013, Sumithra et al. 2013), but reports on clinical disease are almost nonexistent. *M. moatsii* may colonize intestines of wild rats (Giebel et al. 1990). More detailed studies on *Mycoplasma* in wild rodents are certainly needed.

Bartonella spp. were commonly seen in the voles. The animal reservoir for bartonellae is large, including rodents such as rats, mice, and voles (Krauss et al. 2003, Buffet et al. 2012, 2013, Hayman et al. 2013, Silaghi et al. 2016). Human bartonellosis in Finland is rare, but may be life-threatening (Jalava et al. 1995). Our findings included both undetermined (spp.) sequences and sequence types representing known species, such as *Bartonella rochalimae*, *Bartonella taylorii*, *Bartonella grahamii*, and *Bartonella henselae*. All these have

been found in wild rodents (Krauss et al. 2003); the first three (or their close relatives) are common findings in bank and field voles (Buffet et al. 2012, 2013).

Numerous sequences belonged to Anaplasmataceae and *Anaplasma*. Within this genus, *Anaplasma phagocytophilum* infections are well known in the bank vole, field vole, common vole (*Microtus arvalis*), and common shrew (*Sorex araneus*), but these small mammals harbor a subtype different from those causing tick-transmitted granulocytic anaplasmosis of veterinary and medical importance (Brown et al. 2001, Majazki et al. 2013). *A. phagocytophilum* is common in bank voles in Finland (Kallio et al. 2014).

Among several other mammals, wild rodents host zoonotic *F. tularensis* (Rossow et al. 2014b, 2014c), which was present also in this study. Furthermore, DNA belonging to Corynebacteriaceae family was detected from the liver samples. At least two species, *Corynebacterium pseudotuberculosis*

TABLE 3. COMPARISON OF BACTERIAL FINDINGS USING BR-PCR AND PYROSEQUENCING METHODS, IDENTIFIED BY RIBOSOMAL DATABASE PROJECT CLASSIFIER

Vole ID	Conventional Br-PCR findings ^a	Pyrosequencing findings ^b
JB30 ^c	Lachnospiraceae, Ruminococcaceae	Lachnospiraceae (18.0%), Porphyromonadaceae (18.0%), Ruminococcaceae (11.0%), Cytophagaceae (12.1%), Coriobacteriaceae (9.0%), Prevotellaceae (6.2%)
TUL38	Lachnospiraceae, Ruminococcaceae	Porphyromonadaceae (35.8%), Ruminococcaceae (9.8%), Lachnospiraceae (9.3%), Prevotellaceae (7.1%), Cytophagaceae (5.3%)
TUL58	Lachnospiraceae, <i>Lactobacillus</i> , Coriobacteriaceae	Lachnospiraceae (23.8%), Ruminococcaceae (11.1%), Porphyromonadaceae (12.1%), Prevotellaceae (8.2%), Cytophagaceae (8.6%)
JB14	Lachnospiraceae, Ruminococcaceae, <i>Helicobacter</i>	Lachnospiraceae (26.2%), Ruminococcaceae (21.4%), Porphyromonadaceae (10.3%), Cytophagaceae (6.7%)
JB37	Lachnospiraceae	Ruminococcaceae (16.5%), Lachnospiraceae (15.9%), Porphyromonadaceae (14.4%), Cytophagaceae (11.8%), Mycoplasmataceae (8.3%)
JB38	<i>Mycoplasma</i> , <i>Pseudomonas</i>	Mycoplasmataceae (22.2%), Ruminococcaceae (21.7%), Campylobacteraceae (12.5%), Prevotellaceae (7.1%)
TUL39	<i>Mycoplasma</i> , Ruminococcaceae	Mycoplasmataceae (36.8%), Campylobacteraceae (11.3%), Propionibacteriaceae (6.1%)
JB40	<i>Mycoplasma</i>	Mycoplasmataceae (59.0%), Prevotellaceae (20.5%)
TUL36	Unclassified bacteria ^d	Mycoplasmataceae (43.1%), Carnobacteriaceae (42.5%)
TUL30	<i>Bartonella</i> , <i>Mycoplasma</i>	Bartonellaceae (52.4%), Mycoplasmataceae (41.1%)
TUL34	<i>Bartonella</i>	Bartonellaceae (75.7%), Mycoplasmataceae (22.2%)
JB23	<i>Bartonella</i>	Bartonellaceae (18.3%), Comamonadaceae (16.8%)
JB47	<i>Bartonella</i>	Bartonellaceae (63.5%), Ruminococcaceae (11.3%)
JB10	<i>Corynebacterium</i>	Bartonellaceae (69.9%), Ruminococcaceae (7.0%)
TUL40	<i>Bartonella</i>	Bartonellaceae (93.0%)
JB20	<i>Bartonella</i> , <i>Anaplasma</i> , <i>Acinetobacter</i>	Bartonellaceae (90.4%)
JB18	<i>Bartonella</i> , <i>Anaplasma</i>	Anaplasmataceae (75.5%), Bartonellaceae (18.6%)
TUL29	<i>Anaplasma</i>	Anaplasmataceae (92.4%)
TUL37	<i>Francisella</i> , <i>Anaplasma</i> , <i>Mycoplasma</i> , <i>Lactobacillus</i>	Francisellaceae (36.7%), Anaplasmataceae (33.1%), Ruminococcaceae (7.6%)
TUL32	<i>Francisella</i>	Francisellaceae (100%)
TUL33	<i>Francisella</i>	Francisellaceae (100%)
JB48	<i>Bartonella</i>	Moraxellaceae (39.4%), Corynebacteriaceae (23.9%)
TUL25	Unclassified bacteria ^d	Unclassified bacteria

^aIncludes findings with assignment confidence of $\geq 97\%$.

^bIncludes findings of sequence types, which exceed the relative abundance of 5% in the sample. Percentage is indicated in *brackets*.

^cControl vole; no splenomegaly.

^dResults with BLAST search tool: *Mycoplasma* sp. (93%).

and *Corynebacterium ulcerans*, colonize or infect ruminants and horses and occasionally humans (Krauss et al. 2003). However, the most notable human infection is caused by *C. diphtheria* that is considered nearly exclusively as a human pathogen (Sing et al. 2016).

Many of our findings reflect the normal intestinal flora of other rodent species. We found bacterial DNA representing members of the order Clostridiales, some of which (*e.g.*, *Clostridium* spp.) are well-known parts of normal murine and probably also voles' intestinal flora (Salzman et al. 2002). More specifically, representatives from families Lachnospiraceae and Ruminococcaceae were common. More experimental studies are needed to determine whether our findings reflect nonviable bacterial remnants in the liver or leakage of the intestine walls as part of early decomposition.

Family Moraxellaceae and, more specifically, *Acinetobacter* were also present in our vole samples. *Acinetobacter* are common in nature and occur in normal flora of mice (Pedron et al. 2012) and humans (Bergogne-Berezin et al. 1996). However, every now and then these opportunistic

bacteria cause nosocomial epidemics, which may lead to lethal outcomes resulting, for example, from pneumonia. Several fatal infections have also been described in military personnel [reviewed in O'Shea (2012)].

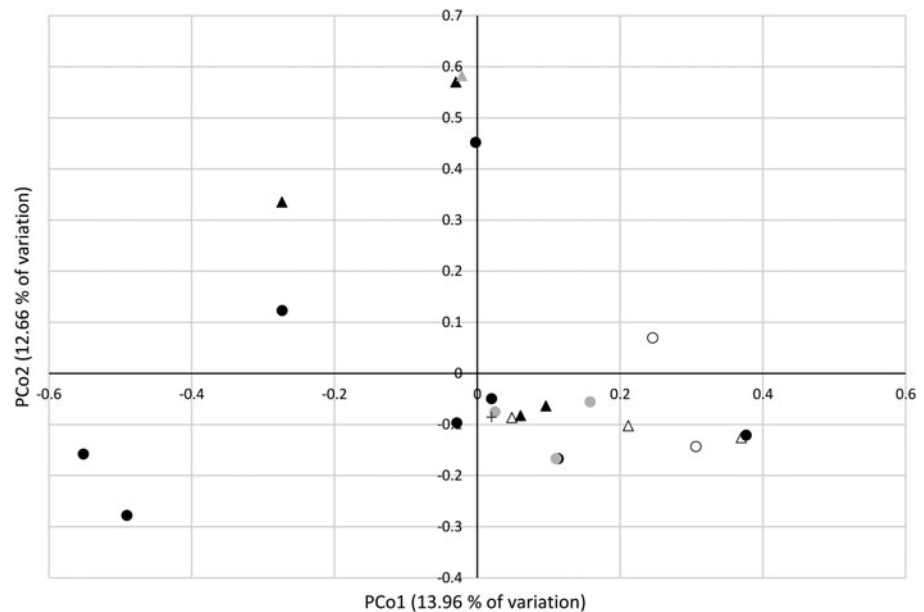
The composition of the intestinal commensal microflora of wild voles is poorly known. However, that of laboratory mice has been studied decades ago by cultivation (Dubos et al. 1965, Schaedler et al. 1965) and later by molecular and microdissection methods (Salzman et al. 2002, Nava et al. 2011, Pedron et al. 2012). According to these studies, murine microflora includes obligate anaerobes, such as *Bacteroides* spp. and *Clostridium* spp, facultative anaerobes, such as *Lactobacillus* spp., *Enterococcus* spp., and *Enterobacillus* spp., as well as aerobic *Acinetobacter* spp. In the mouse colon, bacteria belonging to the phylum *Firmicutes* are enriched, Lachnospiraceae and Ruminococcaceae being the predominant families (Nava et al. 2011). In addition to *Firmicutes*, bacteria from phylum *Bacteroidetes* contribute to the luminal bacterial contents in mice and humans (Ley et al. 2005, Garner et al. 2009, Nava et al. 2011). In murine crypta, *Acinetobacter*

TABLE 4. INVERSE SIMPSON AND SHANNON DIVERSITY INDEXES FOR EACH VOLE SAMPLE

<i>Vole ID</i>	<i>Number of seqs</i>	<i>Coverage</i>	<i>Sobs</i>	<i>Inv Simpson</i>	<i>Simpson_lci</i>	<i>Inv Simpson_hci</i>	<i>Shannon</i>	<i>Shannon_lci</i>	<i>Shannon_hci</i>
<i>M. agrestis</i> -Kolari-JB47	196	0.94898	24	5.031596	4.308735	6.045893	2.060098	1.877782	2.242415
<i>M. agrestis</i> -Kolari-JB48	163	0.883436	42	22.152685	18.350143	27.94309	3.271317	3.124267	3.418366
<i>M. agrestis</i> -Konnevesi-TUL25	235	0.940426	38	11.923244	9.958942	14.852812	2.889178	2.740537	3.037818
<i>M. agrestis</i> -Konnevesi-TUL29	7301	0.997809	51	1.084337	1.074389	1.09447	0.296553	0.267212	0.325894
<i>M. agrestis</i> -Konnevesi-TUL30	1225	0.964898	86	1.555836	1.474931	1.646133	1.264418	1.143053	1.385783
<i>M. agrestis</i> -Konnevesi-TUL32	19,366	0.999742	7	1.001034	1.000396	1.001671	0.005198	0.00228	0.008115
<i>M. agrestis</i> -Konnevesi-TUL33	23,598	0.999746	10	1.001018	1.000445	1.001591	0.005452	0.002649	0.008256
<i>M. agrestis</i> -Konnevesi-TUL34	8439	0.997512	38	1.056439	1.049035	1.063948	0.192404	0.170742	0.214066
<i>M. agrestis</i> -Konnevesi-TUL36	241	0.941909	39	8.763636	6.91328	11.966498	2.857274	2.687942	3.026606
<i>M. agrestis</i> -Konnevesi-TUL37	8634	0.995367	137	2.851895	2.78899	2.917704	1.755014	1.71436	1.795667
<i>M. agrestis</i> -Konnevesi-TUL38	2221	0.936065	359	55.552526	50.360425	61.938292	4.868758	4.806312	4.931205
<i>M. agrestis</i> -Pieksämäki-TUL39	962	0.97817	92	29.800851	27.080017	33.1295	3.797899	3.72818	3.867618
<i>M. agrestis</i> -Pieksämäki-TUL40	2731	0.980227	94	1.155055	1.131996	1.179073	0.544098	0.478564	0.609633
<i>M. agrestis</i> -Pieksämäki-TUL58	6890	0.938607	925	53.263711	50.070867	56.891481	5.250534	5.205474	5.295593
<i>M. oeconomus</i> -Kolari-JB37	2721	0.935685	503	93.968157	85.200048	104.747985	5.376409	5.323114	5.429705
<i>M. oeconomus</i> -Kolari-JB38	2153	0.990246	88	12.684122	12.003375	13.446725	3.070901	3.012539	3.129263
<i>M. oeconomus</i> -Kolari-JB40	292	0.938356	43	14.933568	12.584067	18.361796	3.073928	2.949389	3.198467
<i>M. oeconomus</i> -Pisavaara-JB14	5651	0.931163	969	152.318786	143.114026	162.788994	5.879128	5.839977	5.91828
<i>M. oeconomus</i> -Pisavaara-JB18	1027	0.991237	25	2.160917	2.034111	2.304584	1.214994	1.128263	1.301724
<i>M. oeconomus</i> -Pisavaara-JB20	5606	0.996432	66	1.200618	1.18166	1.220194	0.59598	0.552348	0.639612
<i>M. oeconomus</i> -Pisavaara-JB23	222	0.963964	31	16.836651	14.318574	20.429379	3.013612	2.901857	3.125366
<i>M. oeconomus</i> -Pyhänturi-JB10	10,003	0.997201	104	1.601494	1.570382	1.633863	1.24906	1.208947	1.289173
Control vole-JB30	3571	0.877345	752	69.684333	63.776785	76.798018	5.360887	5.303846	5.417929

Sobs, number of observed OTUs; Inv Simpson, Inverse Simpson's diversity index, with lower (lci) and upper (hci) 95% confidence intervals; Shannon, Shannon index, with lower (lci) and upper (hci) 95% confidence intervals.

FIG. 3. Principal Coordinates Analysis (PCoA). *Microtus agrestis* samples are indicated with circles, *Microtus oeconomus* with triangles and *M. oeconomus* control vole with a cross. The collection sites are indicated as follows: Kolari empty circle/triangle; Konnevesi black circle; Pisavaara black triangle; Pieksamäki gray circle; Pyhäntunturi gray triangle. Note that the two principle coordinated explain only 26.62% of the total variation.



spp. is common (Pedron et al. 2012). These previous findings from mice reflected those seen in our study on voles.

While the OTU-based analysis of the pyrosequencing data suggested some differences between the bacterial communities of different vole species and between some of the locations, these results should be interpreted cautiously. The AMOVA suggested differences between voles captured in Pisavaara compared with those captured in Kolari. This may be due to relatively high proportion of Bartonellaceae in the *M. oeconomus* voles captured in Pisavaara and the relatively high proportions of *Mycoplasmataceae* in the voles captured in Kolari. We purposely studied splenomegaly voles as an indicator of potential infection; our results may not represent the average normal flora. The nonpathogenic findings from the sole vole with visibly normal spleen suggest this as well.

Razzauti et al. (2015) studied voles collected from France using next-generation sequencing techniques and detected 45 potential zoonotic bacterial genera from spleen samples. These included, for example, *Bartonella*, *Rickettsia*, *Borrelia*, *Neohrllichia*, *Anaplasma*, and *Francisella*. Several same bacterial genera were also discovered from our voles. The differences may be due to geographical location, the organs studied, and techniques used, as well as our selection based on splenomegaly.

We found pyrosequencing useful in providing wide-ranging and vast information on the bacterial composition of vole liver tissue. Tagged pyrosequencing is less laborious, resulting in less hands-on time compared with the conventional Br-PCR method as 16S rDNA PCR products can be characterized directly without cloning. Furthermore, since barcoded PCR primers allow dozens of different samples to be analyzed in the same pyrosequencing run, microbial communities can be characterized at a fast rate. Overall, pyrosequencing proved to be a favorable method for characterization of bacterial flora, especially if the number of samples is large. On the other hand, conventional Br-PCR is useful when studying fewer samples and when high-technology instrumentation and expertise are unavailable.

To obtain sufficient amount of PCR product for pyrosequencing, we had to increase the number of PCR cycles from

35 to 45. This raised the amount of contaminant sequences in the final results. In seven samples, for example, the amount of Halomonadaceae and Shewanellaceae reads exceeded even 8000 (Fig. 1a). Previous studies have similarly shown increasing proportion of contaminant sequences and their dominance in samples containing low bacterial copy numbers (Salter et al. 2014). In our study, this was especially evident with three samples, where the relevant sequences numbered only hundreds.

The DECIPHER tool detected one chimera from our Br-PCR data. In addition, it was unable to classify several sequences. According to Wright et al. (2012), indecipherable sequences are often either chimeric or not 16S. Furthermore, altogether 108 sequences shared 78–100% similarity with vole sequences (field and bank vole), thus not being of bacterial 16S rRNA origin (Supplementary Table S1).

We were able to identify 33% of the Br-PCR sequence types to genus level, which leaves a substantial portion of undetermined sequences. These probably represent previously uncharacterized bacteria occurring in vole communities in Finland. Of special interest is a group of sequence types sharing some similarity with *Mycoplasma* spp. The significance of these findings needs clarification with genus-specific identification methods.

According to this study, contaminating exogenous DNA is common in extraction and PCR reagents and it originates from a variety of bacteria (Supplementary Tables S2–S4). Some of the bacterial species, for example, *Pseudomonas*, *Micrococcus*, *Sphingomonas*, *Methylobacterium*, *Acidovorax*, and *Phyllobacterium*, have been reported earlier (Maiwald et al. 1994, Tanner et al. 1998, Barton et al. 2006), but some novel sequence types were also found. Different PCR reagents and extraction kits seem to contain different contaminants.

Interestingly, many of the contaminant sequence types (such as *Phyllobacterium* sp., *Sphingomonas* sp., *Variovorax* sp., and *Pseudomonas* sp.) have been reported to exist in several body sites based on a method similar to this study (Supplementary Fig. S4) and published in the Human Microbiome Project (www.hmpdacc.org/HM16STR/). These findings should be confirmed by detection methods unaffected

by potential amplification of contaminant DNA in the reagents (Salter et al. 2014, Aho et al. 2015).

Conclusions

This study revealed significant bacterial diversity in vole liver samples, consisting of known pathogens and reflecting that of intestinal flora as well. Overall, the findings were independent from the trapping location. The voles commonly carried potential or verified zoonotic bacterial pathogens and therefore they may play a role in spreading them.

The two methods used gave comparable results. Pyrosequencing needs less hands-on time, being more suitable with a large sample number. On the other hand, the Br-PCR method is ideal when studying fewer samples. In addition, our results remind us of the need to acknowledge the possible presence of exogenous DNA in molecular reagents. Ignorance may lead to false conclusions.

Nucleotide sequence accession numbers

The sequences reported in this article were deposited in NCBI GenBank with the accession numbers KT961130–KT961324.

Acknowledgments

The authors thank Heidi Rossow for sample preparation. The authors wish to acknowledge CSC – IT Center for Science, Finland, for computational resources. This work is part of the European Biodefence project EDA B-1325-ESM4-GP and has been partially funded by EU grant FP7-261504 EDE-Next and cataloged as EDENext 442 (www.edenext.eu).

Author Disclosure Statement

No competing financial interests exist.

References

- Aho VT, Pereira PA, Haahtela T, Pawankar R, et al. The microbiome of the human lower airways: A next generation sequencing perspective. *World Allergy Organ J* 2015; 8:23.
- Barton HA, Taylor NM, Lubbers BR, Pemberton AC. DNA extraction from low-biomass carbonate rock: An improved method with reduced contamination and the low-biomass contaminant database. *J Microbiol Methods* 2006; 66:21–31.
- Bergogne-Berezin E, Towner KJ. *Acinetobacter* spp. as nosocomial pathogens: microbiological, clinical, and epidemiological features. *Clin Microbiol Rev* 1996; 9:148–165.
- Brown DR, Talkington DF, Thacker WL, Brown MB, et al. *Mycoplasma microti* sp. nov., isolated from the respiratory tract of prairie voles (*Microtus ochrogaster*). *Int J Syst Evol Microbiol* 2001; 51:409–412.
- Buffet JP, Kosoy M, Vayssier-Taussat M. Natural history of *Bartonella*-infecting rodents in light of new knowledge on genomics, diversity and evolution. *Future Microbiol* 2013; 8: 1117–1128.
- Buffet JP, Marsot M, Vaumourin E, Gasqui P, et al. Co-infection of *Borrelia afzelii* and *Bartonella* spp. in bank voles from a suburban forest. *Comp Immunol Microbiol Infect Dis* 2012; 35:583–589.
- Buffet JP, Pisanu B, Brisse S, Roussel S, et al. Deciphering bartonella diversity, recombination, and host specificity in a rodent community. *PLoS One* 2013; 8:e68956.
- DeSantis TZ, Hugenholtz P, Larsen N, Rojas M, et al. GreenGenes, a chimera-checked 16S rRNA gene database and workbench compatible with ARB. *Appl Environ Microbiol* 2006; 72:5069–5072.
- Dubos R, Schaedler RW, Costello R, Hoet P. Indigenous, normal, and autochthonous flora of the gastrointestinal tract. *J Exp Med* 1965; 122:67–76.
- Dumler JS, Barbet AF, Bekker CP, Dasch GA, et al. Reorganization of genera in the families Rickettsiaceae and Anaplasmataceae in the order Rickettsiales: Unification of some species of Ehrlichia with Anaplasma, Cowdria with Ehrlichia and Ehrlichia with Neorickettsia, descriptions of six new species combinations and designation of Ehrlichia equi and ‘HGE agent’ as subjective synonyms of *Ehrlichia phagocytophila*. *Int J Syst Evol Microbiol* 2001; 51:2145–2165.
- Edgar RC, Haas BJ, Clemente JC, Quince C, et al. UCHIME improves sensitivity and speed of chimera detection. *Bioinformatics* 2011; 27:2194–2200.
- Garner CD, Antonopoulos DA, Wagner B, Duhamel GE, et al. Perturbation of the small intestine microbial ecology by streptomycin alters pathology in a *Salmonella enterica* serovar typhimurium murine model of infection. *Infect Immun* 2009; 77:2691–2702.
- Giebel J, Binder A, Kirchhoff H. Isolation of *Mycoplasma moatsii* from the intestine of wild Norway rats (*Rattus norvegicus*). *Vet Microbiol* 1990; 22:23–29.
- Hanski I, von Hertzen L, Fyhrquist N, Koskinen K, et al. Environmental biodiversity, human microbiota, and allergy are interrelated. *Proc Natl Acad Sci U S A* 2012; 109:8334–8339.
- Hayman DT, McDonald KD, Kosoy MY. Evolutionary history of rat-borne *Bartonella*: The importance of commensal rats in the dissemination of bacterial infections globally. *Ecol Evol* 2013; 3:3195–3203.
- Human Microbiome Project Consortium. A framework for human microbiome research. *Nature* 2012; 486:215–221.
- Ishiguro T, Takayanagi N, Yamaguchi S, Yamakawa H, et al. Etiology and factors contributing to the severity and mortality of community-acquired pneumonia. *Intern Med* 2013; 52: 317–324.
- Jalava J, Kotilainen P, Nikkari S, Skurnik M, et al. Use of the polymerase chain reaction and DNA sequencing for detection of *Bartonella quintana* in the aortic valve of a patient with culture-negative infective endocarditis. *Clin Infect Dis* 1995; 21: 891–896.
- Kallio ER, Begon M, Birtles RJ, Bown KJ, et al. First report of *Anaplasma phagocytophilum* and *Babesia microti* in rodents in Finland. *Vector Borne Zoonotic Dis* 2014; 14:389–393.
- Kotilainen P, Jalava J, Meurman O, Lehtonen OP, et al. Diagnosis of meningococcal meningitis by broad-range bacterial PCR with cerebrospinal fluid. *J Clin Microbiol* 1998; 36:2205–2209.
- Krauss H, Weber A, Appel M, Enders B, et al. *Zoonoses. Infectious Diseases Transmissible from Animals to Humans*, 3rd ed. Washington, DC: ASM Press, American Society for Microbiology; 2003.
- Kwok S, Higuchi R. Avoiding false positives with PCR. *Nature* 1989; 339:237–238.
- Ley RE, Backhed F, Turnbaugh P, Lozupone CA, et al. Obesity alters gut microbial ecology. *Proc Natl Acad Sci U S A* 2005; 102:11070–11075.
- Lindsey JR, Cassell H. Experimental *Mycoplasma pulmonis* infection in pathogen-free mice. Models for studying mycoplasmosis of the respiratory tract. *Am J Pathol* 1973; 72:63–90.
- Lo YM, Chan KC. Setting up a polymerase chain reaction laboratory. *Methods Mol Biol* 2006; 336:11–18.

- Maiwald M, Ditton HJ, Sonntag HG, von Knebel Doeberitz M. Characterization of contaminating DNA in Taq polymerase which occurs during amplification with a primer set for *Legionella* 5S ribosomal RNA. *Mol Cell Probes* 1994; 8: 11–14.
- Majazki J, Wuppenhorst N, Hartelt K, Birtles R, et al. *Anaplasma phagocytophilum* strains from voles and shrews exhibit specific ankA gene sequences. *BMC Vet Res* 2013; 9:235.
- Nava GM, Friedrichsen HJ, Stappenbeck TS. Spatial organization of intestinal microbiota in the mouse ascending colon. *ISME J* 2011; 5:627–638.
- O’Shea MK. *Acinetobacter* in modern warfare. *Int J Antimicrob Agents* 2012; 39:363–375.
- Pedron T, Mulet C, Dauga C, Frangeul L, et al. A crypt-specific core microbiota resides in the mouse colon. *MBio* 2012; 3:10.
- Qiu Y, Nakao R, Ohnuma A, Kawamori F, et al. Microbial population analysis of the salivary glands of ticks; a possible strategy for the surveillance of bacterial pathogens. *PLoS One* 2014; 9:e103961.
- Razzauti M, Galan M, Bernard M, Maman S, et al. A comparison between transcriptome sequencing and 16S metagenomics for detection of bacterial pathogens in wildlife. *PLoS Negl Trop Dis* 2015; 9:e0003929.
- Renko J, Koskela KA, Lepp PW, Oksala N, et al. Bacterial DNA signatures in carotid atherosclerosis represent both commensals and pathogens of skin origin. *Eur J Dermatol* 2013; 23:53–58.
- Rossow H, Forbes KM, Tarkka E, Kinnunen PM, et al. Experimental infection of voles with *Francisella tularensis* indicates their amplification role in tularemia outbreaks. *PLoS One* 2014a; 9:e108864.
- Rossow H, Ollgren J, Klemets P, Pietarinen I, et al. Risk factors for pneumonic and ulceroglandular tularemia in Finland: A population-based case-control study. *Epidemiol Infect* 2014b; 142:2207–2216.
- Rossow H, Sissonen S, Koskela KA, Kinnunen PM, et al. Detection of *Francisella tularensis* in voles in Finland. *Vector Borne Zoonotic Dis* 2014c; 14:193–198.
- Salipante SJ, Sengupta DJ, Rosenthal C, Costa G, et al. Rapid 16S rRNA next-generation sequencing of polymicrobial clinical samples for diagnosis of complex bacterial infections. *PLoS One* 2013; 8:e65226.
- Salter SJ, Cox MJ, Turek EM, Calus ST, et al. Reagent and laboratory contamination can critically impact sequence-based microbiome analyses. *BMC Biol* 2014; 12:87.
- Salzman NH, de Jong H, Paterson Y, Harmsen HJ, et al. Analysis of 16S libraries of mouse gastrointestinal microflora reveals a large new group of mouse intestinal bacteria. *Microbiology* 2002; 148:3651–3660.
- Sashida H, Sasaoka F, Suzuki J, Watanabe Y, et al. Detection of hemotropic mycoplasmas in free-living brown sewer rats (*Rattus norvegicus*). *J Vet Med Sci* 2013; 75:979–983.
- Schaedler RW, Dubos R, Costello R. The development of the bacterial flora in the gastrointestinal tract of mice. *J Exp Med* 1965; 122:59–66.
- Schloss PD, Gevers D, Westcott SL. Reducing the effects of PCR amplification and sequencing artifacts on 16S rRNA-based studies. *PLoS One* 2011; 6:e27310.
- Schloss PD, Westcott SL, Ryabin T, Hall JR, et al. Introducing mothur: Open-source, platform-independent, community-supported software for describing and comparing microbial communities. *Appl Environ Microbiol* 2009; 75:7537–7541.
- Schmidt TM, Relman DA. Phylogenetic identification of uncultured pathogens using ribosomal RNA sequences. *Methods Enzymol* 1994; 235:205–222.
- Shendure J, Ji H. Next-generation DNA sequencing. *Nat Biotechnol* 2008; 26:1135–1145.
- Silaghi C, Pfeffer M, Kiefer D, Kiefer M, et al. *Bartonella*, rodents, fleas and ticks: A molecular field study on host-vector-pathogen associations in Saxony, Eastern Germany. *Microb Ecol* 2016; 72:965–974.
- Sing A, Konrad R, Meinel DM, Mauder N, et al. *Corynebacterium diphtheriae* in a free-roaming red fox: Case report and historical review on diphtheria in animals. *Infection* 2016; 44:441.
- Sumithra TG, Chaturvedi VK, Susan C, Siju SJ, et al. Mycoplasmosis in wildlife: A review. *Eur J Wildl Res* 2013; 59: 769–781.
- Sun X, Jones HP, Dobbs N, Bodhankar S, et al. Dendritic cells are the major antigen presenting cells in inflammatory lesions of murine *Mycoplasma* respiratory disease. *PLoS One* 2013; 8:e55984.
- Tanner MA, Goebel BM, Dojka MA, Pace NR. Specific ribosomal DNA sequences from diverse environmental settings correlate with experimental contaminants. *Appl Environ Microbiol* 1998; 64:3110–3113.
- Wang Q, Garrity GM, Tiedje JM, Cole JR. Naive Bayesian classifier for rapid assignment of rRNA sequences into the new bacterial taxonomy. *Appl Environ Microbiol* 2007; 73: 5261–5267.
- Weisburg WG, Barns SM, Pelletier DA, Lane DJ. 16S ribosomal DNA amplification for phylogenetic study. *J Bacteriol* 1991; 173:697–703.
- White JR, Nagarajan N, Pop M. Statistical methods for detecting differentially abundant features in clinical metagenomic samples. *PLoS Comput Biol* 2009; 5:e1000352.
- Wilbrink B, van der Heijden IM, Schouls LM, van Embden JD, et al. Detection of bacterial DNA in joint samples from patients with undifferentiated arthritis and reactive arthritis, using polymerase chain reaction with universal 16S ribosomal RNA primers. *Arthritis Rheum* 1998; 41:535–543.
- Winglee K, Elo-Fadros E, Gupta S, Guo H, et al. Aerosol *Mycobacterium tuberculosis* infection causes rapid loss of diversity in gut microbiota. *PLoS One* 2014; 9:e97048.
- Wright ES, Yilmaz LS, Noguera DR. DECIPHER, a search-based approach to chimera identification for 16S rRNA sequences. *Appl Environ Microbiol* 2012; 78:717–725.

Address correspondence to:
Simo Nikkari
Centre for Military Medicine
Tukholmankatu 8A
Helsinki FI-00290
Finland
E-mail: simo.nikkari@mil.fi