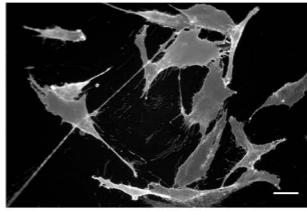
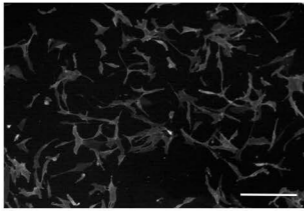


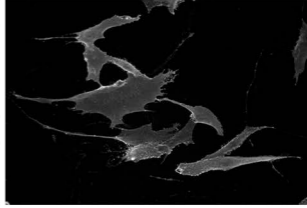
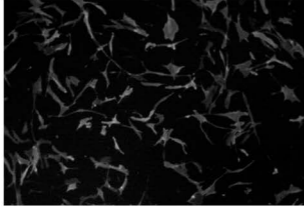
Figure S1 Cell morphology. Before in vivo injection, cell morphology was assessed by fluorescence microscopy after in vitro staining for cell surface CD8a expression for control cells (CD8) or the two VEGF⁺ expressing populations (ALL and SPEC). Size bar: left column = 500 μm , right column = 50 μm .

Figure S2 VEGF production. Production of rat VEGF by the injected human cells (control cells CD8; VEGF⁺ producing cells ALL and SPEC) after 4 weeks in vivo assessed by immunostaining for rat VEGF (rVEGF, in red), human nuclei (HuNu, in green) and nuclei by DAPI staining (blue).

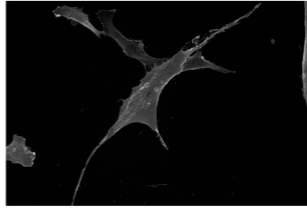
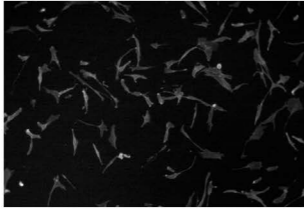
CD8



ALL



SPEC

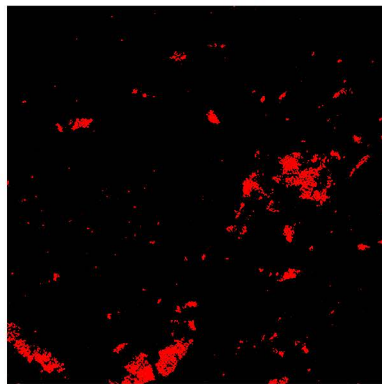
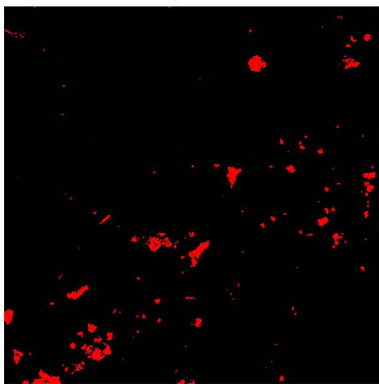
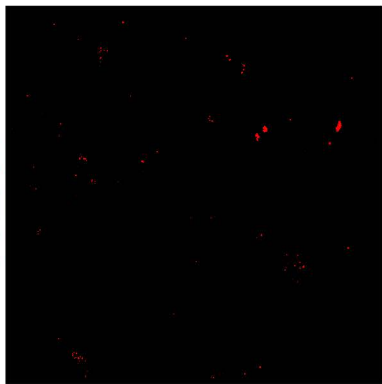


CD8

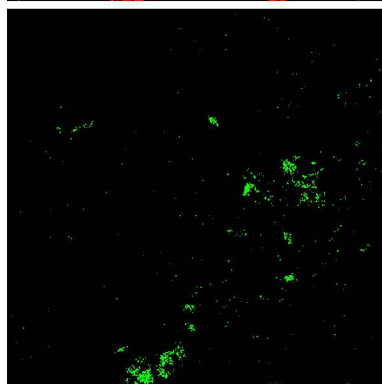
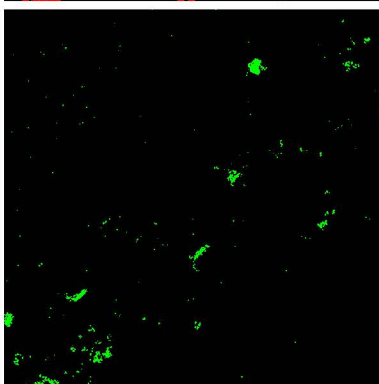
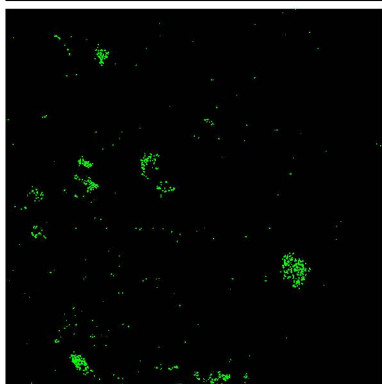
ALL

SPEC

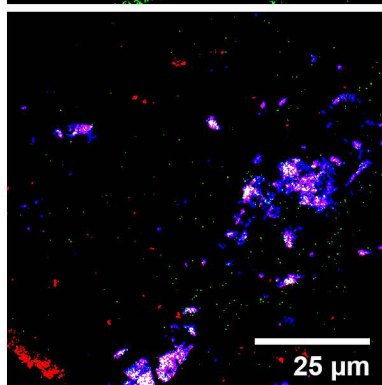
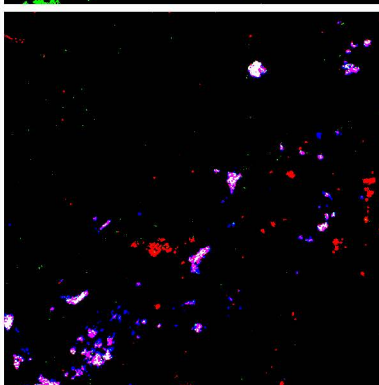
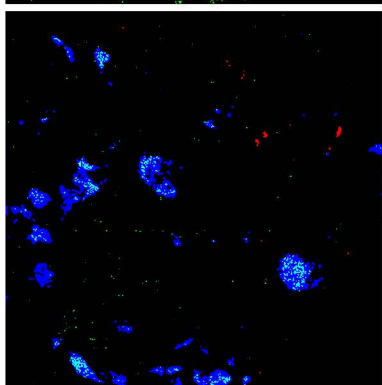
rVEGF



HuNu



MERGE



25 μ m