

Criminal Justice Project

Liverpool Drug Testing Profile (2014 to 2017)

April 2018

Petra Collins, Karen Critchley, Mark Whitfield

Public Health Institute, Faculty of Education, Health and Community,
Liverpool John Moores University, Henry Cotton Campus,
15-21 Webster Street, Liverpool, L3 2ET

 www.ljmu.ac.uk/phi

 k.a.critchley@ljmu.ac.uk

 0151 231 4290

 twitter.com/PHI_IMS

ISBN: 978-1-912210-32-9 (web)

PHI | Public
Health
Institute
LIVERPOOL JOHN MOORES UNIVERSITY



Key findings..... 2

Introduction 3

Liverpool custody suites 3

 Overview 3

 Drug testing activity 5

 Demographics 8

Liverpool residents..... 9

 Overview 9

 Drug testing activity 10

 Demographics 11

Summary 12

Recommendations 13

Appendices 15

 Appendix A 15

 Appendix B 16

 Appendix C 17

References..... 18

Acknowledgements 18

LIVERPOOL CUSTODY SUITES

- Between January 2014 and December 2017, almost half (46%) of the attempted drug tests across Merseyside were carried out at Liverpool's custody suites (n=10,533).
- Attempted drug tests reduced by 48% between 2014 and 2015, and by 52% between 2015 and 2016, with an overall reduction of 76% over the four-year period.
- The average positive drug test rate in both 2016 and 2017 was 73%, compared to 50% in 2014 and 53% in 2015.
- There were 913 positive drug tests in 2017 (794 individuals).
- Over half (53%) of the positive drug tests in 2017 were for cocaine only (n=482), while 47% were for opiate metabolites (both cocaine and opiates = 386 [42%]; opiates only = 45 [5%]).
- Two-thirds (67%) of positive drug tests occurred midweek (n=614).
- Around four in five (81%) positive drug tests during the week occurred when the custody suite was staffed by a drugs worker (08:00-22:00; n=495), compared to around half (49%) at the weekend when the main staffed hours are between 12:00 and 22:00 (n=148). However, proportions at the weekend peaked between 10:00 and 11:59 (n=61; 20%), during which time the custody suite was not staffed by a drugs worker.
- Just over one-third (35%) of positive drug test records in 2017 reported Misuse of Drugs Act (MDA) offences (n=319), followed by theft (n=290; 32%).
- Over four in five (83%) were male (n=759).
- Those aged 18-24 years and 25-29 years each accounted for 17% of those testing positive in 2017.
- The majority were White European (n=864; 95%).
- Around three-quarters (76%) were resident in Liverpool (n=596).

LIVERPOOL RESIDENTS

- Between January 2014 and December 2017, over one-third (37%) of the attempted drug tests carried out across Merseyside were Liverpool residents (n=8,521).
- Around three-quarters (76%) of Liverpool residents were drug tested in Liverpool (n=6,480).
- Attempted drug tests reduced by 45% between 2014 and 2015, and by 48% between 2015 and 2016, though they increased by 5% between 2016 and 2017.
- There were 879 positive drug tests in 2017.
- Just over half (53%) of positive tests were for opiate metabolites (both cocaine and opiates = 408 [46%]; opiates only = 54 [6%]), while the remaining positive tests were for cocaine only (n=417; 47%).
- Over one-third (36%) of positive drug test records in 2017 reported theft (n=313), followed by 33% MDA offences (n=286).
- Over four in five (82%) were male (n=718).
- Those aged 35-39 years and 40-44 years accounted for 18% and 17% of those testing positive in 2017 respectively.
- The majority were White European (n=840; 96%).

INTRODUCTION

In Liverpool, the criminal justice process generally begins with the police drug testing individuals in the custody suite following an arrest. If offenders test positive for Class A drugs (opiates and/or cocaine), they are served with a Required Assessment (RA) by the police. This is a compulsory legal sanction which requires the individual to attend up to two appointments (initial/follow-up RA) with a drugs worker. During these assessments the drugs worker will assess the individual's drug use and offending behaviour and, if necessary, encourage them to engage with drug treatment services (Home Office, 2010). In 2016/17, 57% of those accessing criminal justice interventions in Merseyside presented via the RA route (Collins et al., 2017a), and for this reason the police play an important role in the early stages of this process.

Merseyside Police introduced targeted drug testing in 2015. This involves a set list of questions around drug use that should be considered by the police before a decision is made on whether the arrestee is drug tested. The main aim of targeted testing is to reduce the number of negative drug tests carried out in the custody suite setting, thus save police time and money, while ensuring offenders who use drugs continue to be drug tested and referred to treatment services through the RA process.

This Drug Testing Profile for Liverpool presents information on drug tests carried out at Liverpool's custody suites and on Liverpool residents across the Merseyside area between January 2014 and December 2017, with a particular focus given to the most recent year (2017). This profile contextualises Merseyside Police drug testing data by providing numbers and trends of offenders who use drugs identified through this route into the criminal justice system and a demographic overview of the individuals. Comparisons to overall Merseyside figures have been made, where possible, with tables in Appendix B and C showing comparisons across each area (custody suite area and area of residence). This profile also provides recommendations for stakeholders, in terms of the efficient use of resources and effective services locally and across Merseyside.

LIVERPOOL CUSTODY SUITES

OVERVIEW

Between January 2014 and December 2017, there were a total of 22,808 attempted drug tests in Merseyside's custody suites. The number of drug tests decreased year on year (Table 1), particularly between 2014 and 2015 (44% decrease) and between 2015 and 2016 (50% decrease), which is likely attributed to the implementation of targeted testing across Merseyside in 2015. Notably, the number of attempted drug tests across Merseyside reduced overall by around three-quarters (74%) across the four-year period.

Of the attempted drug tests across Merseyside, almost half (46%) were carried out at Liverpool's custody suites¹ (n=10,533; Table 1). The number of attempted drug tests at Liverpool's custody suites reduced year on year, representing a total decrease of 76% between 2014 and 2017 (48% decrease between 2014 and 2015; 52% decrease between 2015 and 2016).

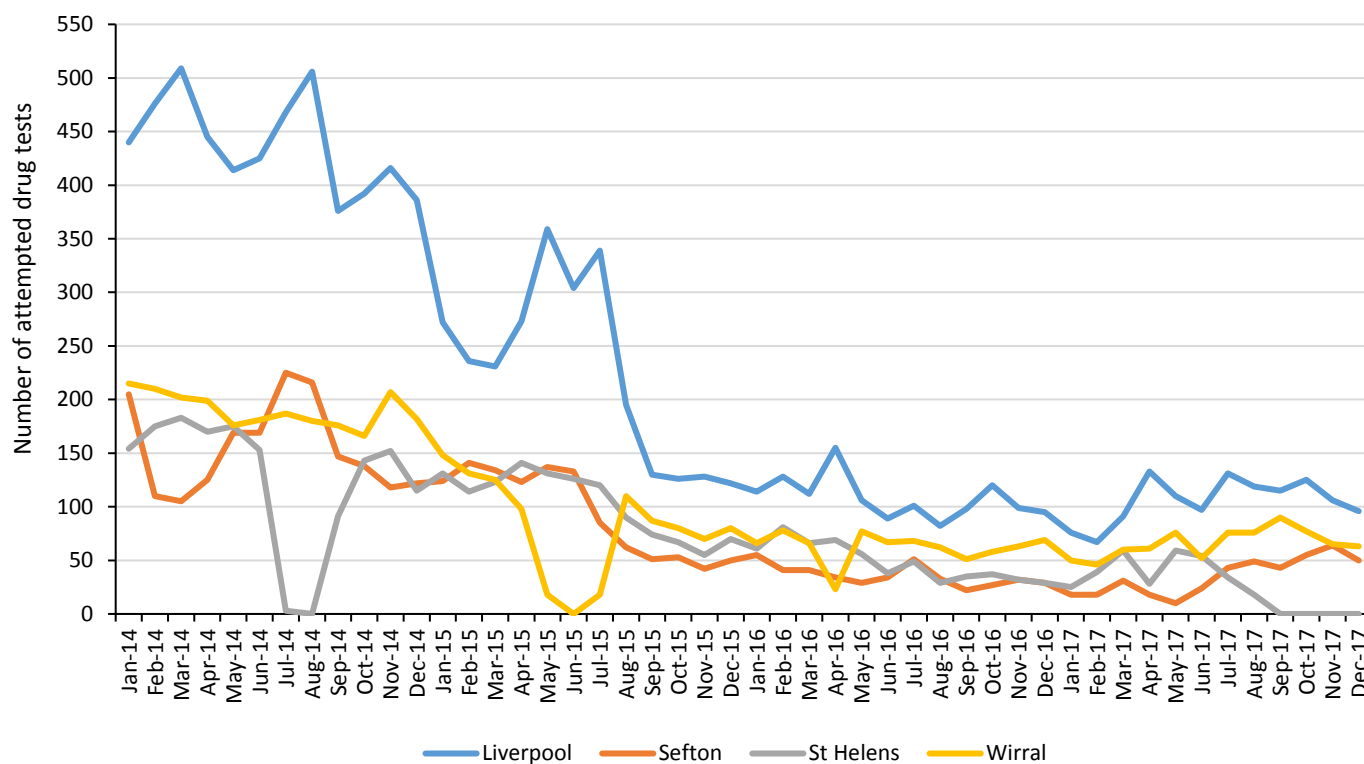
¹ Currently there is one custody suite in operation in Liverpool (St Anne Street), though Wavertree custody suite is opened occasionally, as and when required. During the four-year period, Belle Vale custody suite was only in operation between January and April 2015. For a breakdown of the number of tests carried out at each of the custody suites in Liverpool, please see Appendix A.

Table 1: Number of attempted drug tests by custody suite area and year (2014-17)

| Area | 2014 | 2015 | 2016 | 2017 | Total |
|--------------|---------------|--------------|--------------|--------------|---------------|
| Liverpool | 5,253 | 2,715 | 1,299 | 1,266 | 10,533 |
| Sefton | 1,849 | 1,135 | 428 | 423 | 3,835 |
| St Helens | 1,514 | 1,242 | 582 | 316 | 3,654 |
| Wirral | 2,281 | 965 | 748 | 792 | 4,786 |
| Total | 10,897 | 6,057 | 3,057 | 2,797 | 22,808 |

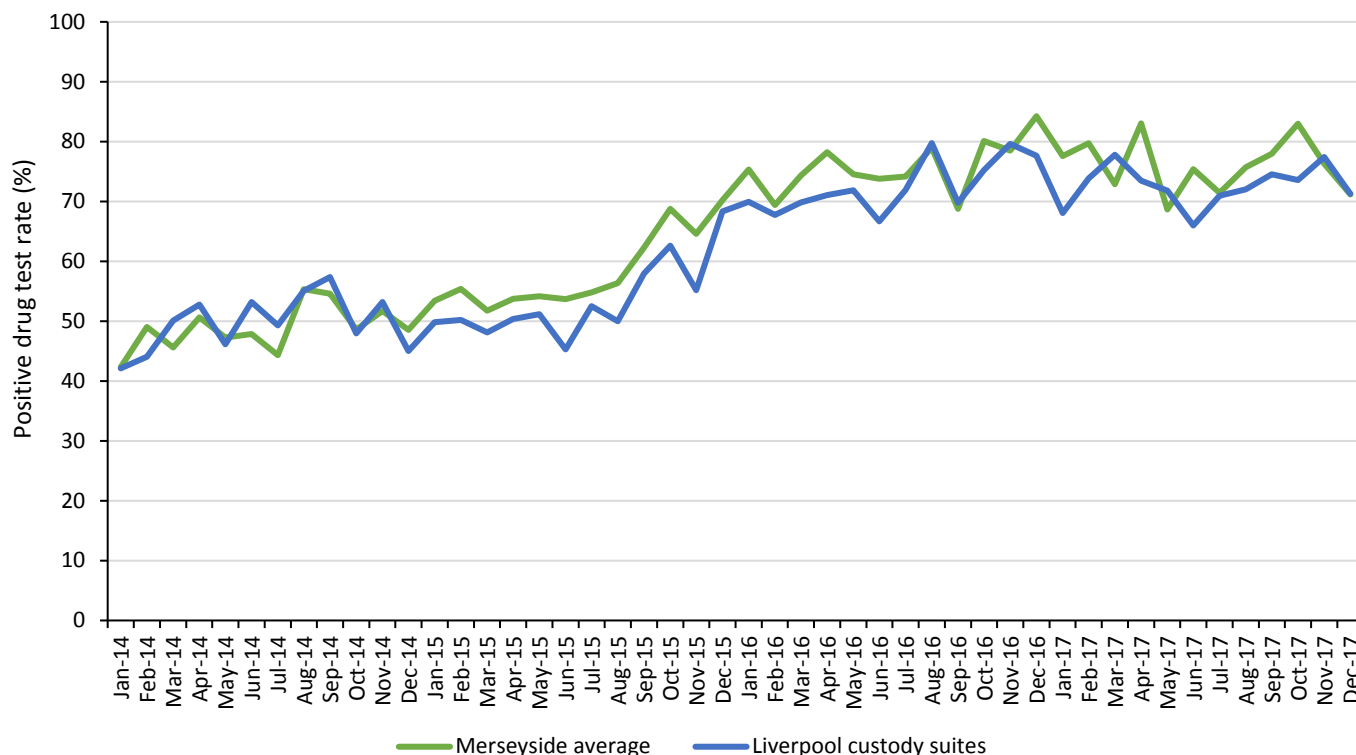
Figure 1 compares the number of attempted drug tests in Liverpool with, Sefton, St Helens and Wirral (there are no custody suites in Knowsley). Evident is the reduction in the number of tests in all areas in 2015 when targeted testing was implemented. The lowest numbers of tests were recorded in January 2017 (n=76) and February 2017 (n=67), while tests were highest in March 2014 (n=509) and August 2014 (n=506).

Figure 1: Number of attempted drug tests by custody suite area and month/year (2014-17)



The positive drug test rate² for those drug tested in Liverpool increased year on year between 2014 and 2016 (Figure 2). The average positive drug test rate in both 2016 and 2017 was 73%, compared to 50% in 2014 and 53% in 2015.

Figure 2: Positive drug test rate by month/year, Liverpool custody suites and Merseyside (2014-17)



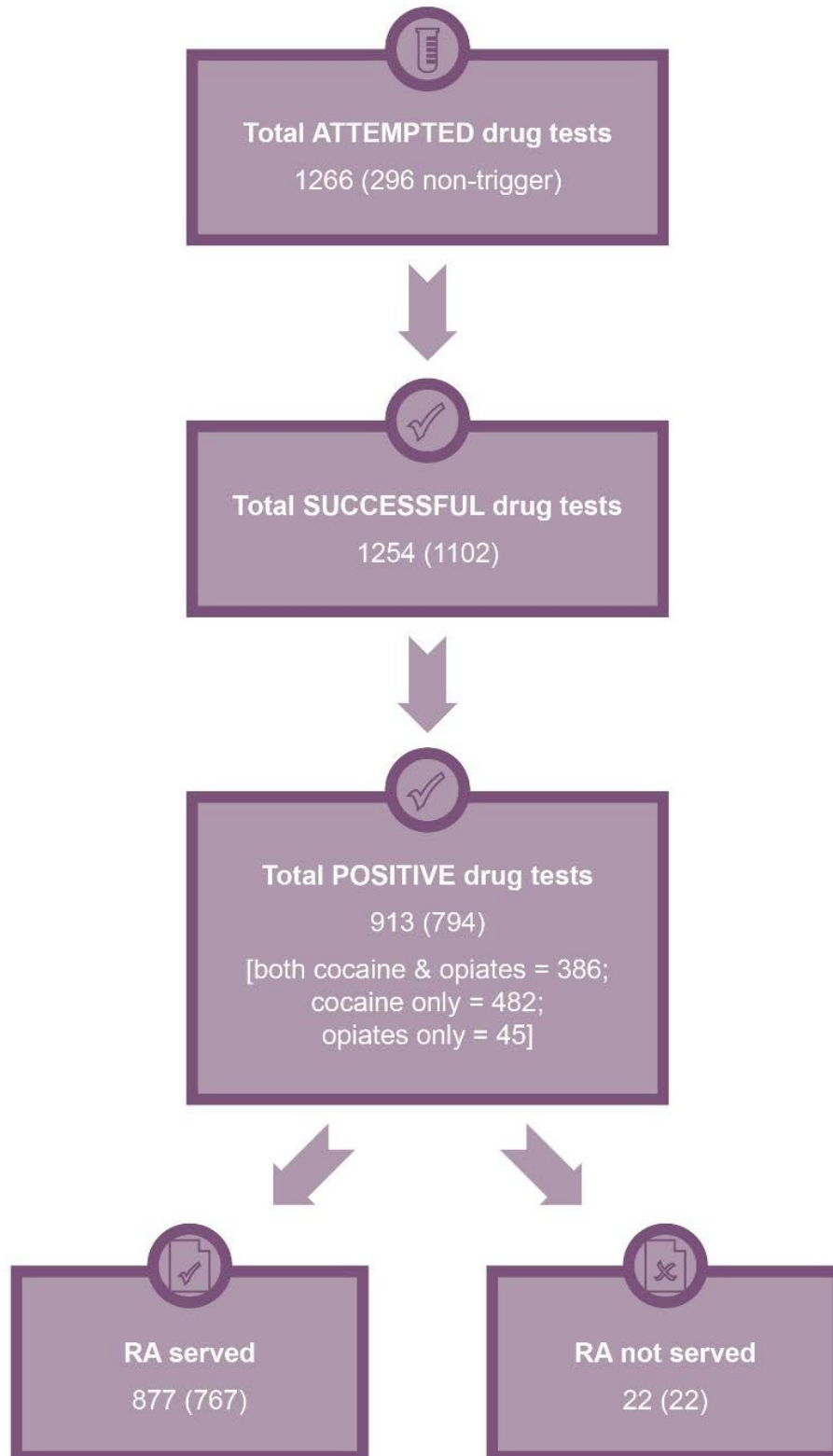
DRUG TESTING ACTIVITY

Figure 3 shows the drug testing activity for those arrested and drug tested in Liverpool’s custody suites between January and December 2017. There were a total of 1,266 attempted drug tests in 2017; of which 1,254 were successful (1,102 individuals). Of the individuals successfully tested, 794 individuals tested positive. This represents a positive drug test rate of 72%, which is just below the positive drug test rate for Merseyside (74%).

Over half (53%) of the 913 positive drug tests in 2017 were for cocaine only (n=482), while 47% were for opiate metabolites (both cocaine and opiates = 386 [42%]; opiates only = 45 [5%]). The proportion that tested positive for opiate metabolites was somewhat lower than that for Merseyside (53%).

² Positive drug test rate = (number of individuals testing positive ÷ number of individuals successfully tested) x 100.

Figure 3: Drug testing activity in Liverpool custody suites (2017)³

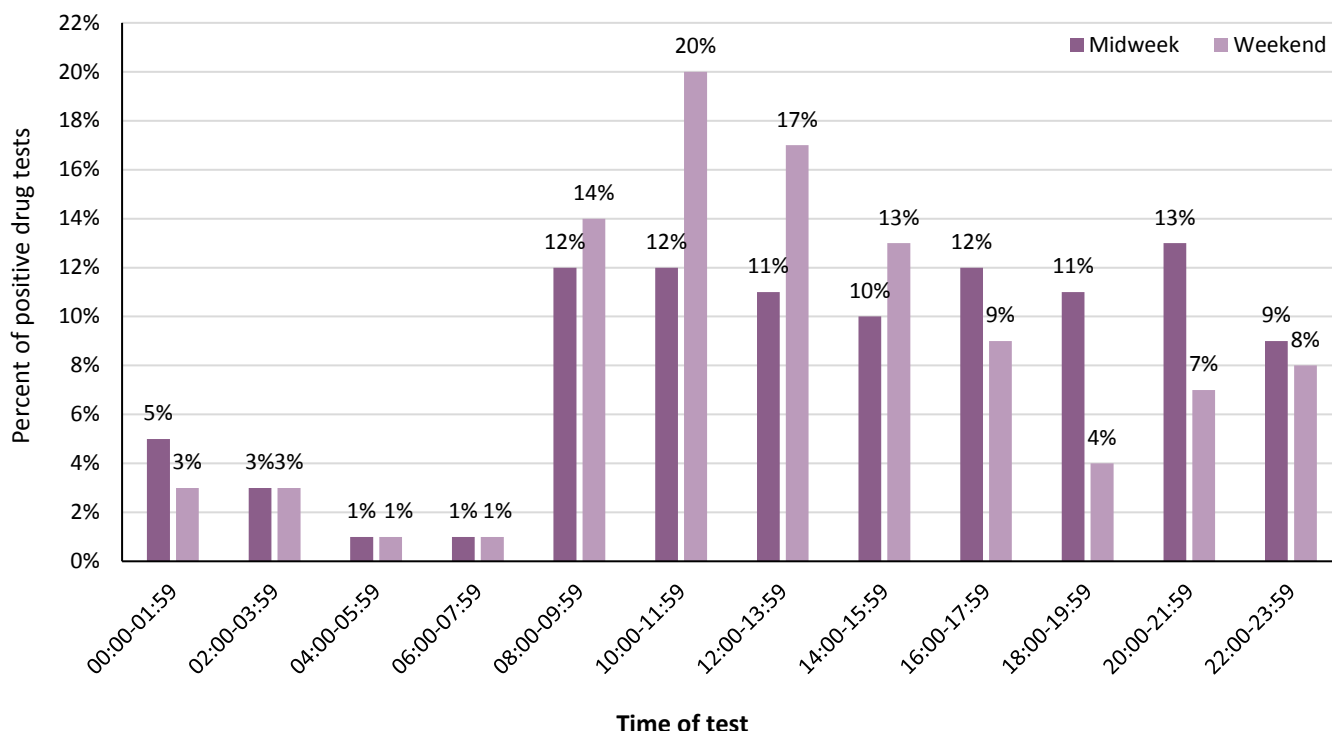


³ Numbers of individuals at each level are presented in brackets. 'Total attempted drug tests' is a summation of successful tests and those that were refused or aborted. 'RA served' and 'RA not served' indicate the number of occasions when those testing positive were either served or not served with the requirement to attend an initial RA. Records where tests were disputed and overturned have been removed; therefore the figure may be different to the subtraction of 'RA not served' from 'Total positive tests'.

Of the 913 positive drug tests carried out at Liverpool’s custody suites in 2017, two-thirds (67%) occurred midweek (n=614). This is slightly below the proportion for all positive drug tests across Merseyside (69%).

Around four in five (81%) positive drug tests during the week occurred when the custody suites were staffed by a drugs worker (08:00-22:00; n=495), compared to around half (49%) at the weekend when the staffed hours are between 12:00 and 22:00 (n=148)⁴. Figure 4 shows the proportions of positive drug tests by time of test, making comparisons between those which occurred during the week and at the weekend. Positive drug tests during the week peaked between 20:00 and 21:59 (n=80; 13%), followed by between 08:00 and 09:59 (n=71; 12%), between 10:00 and 11:59 (n=76; 12%) and between 16:00 and 17:59 (n=71; 12%). The number of tests at the weekend peaked between 10:00 and 11:59 (n=61; 20%), followed by 17% between 12:00 and 13:59 (n=50). Notably, when tests peaked at the weekend (10:00-11:59), the custody suites were not staffed with a drugs worker.

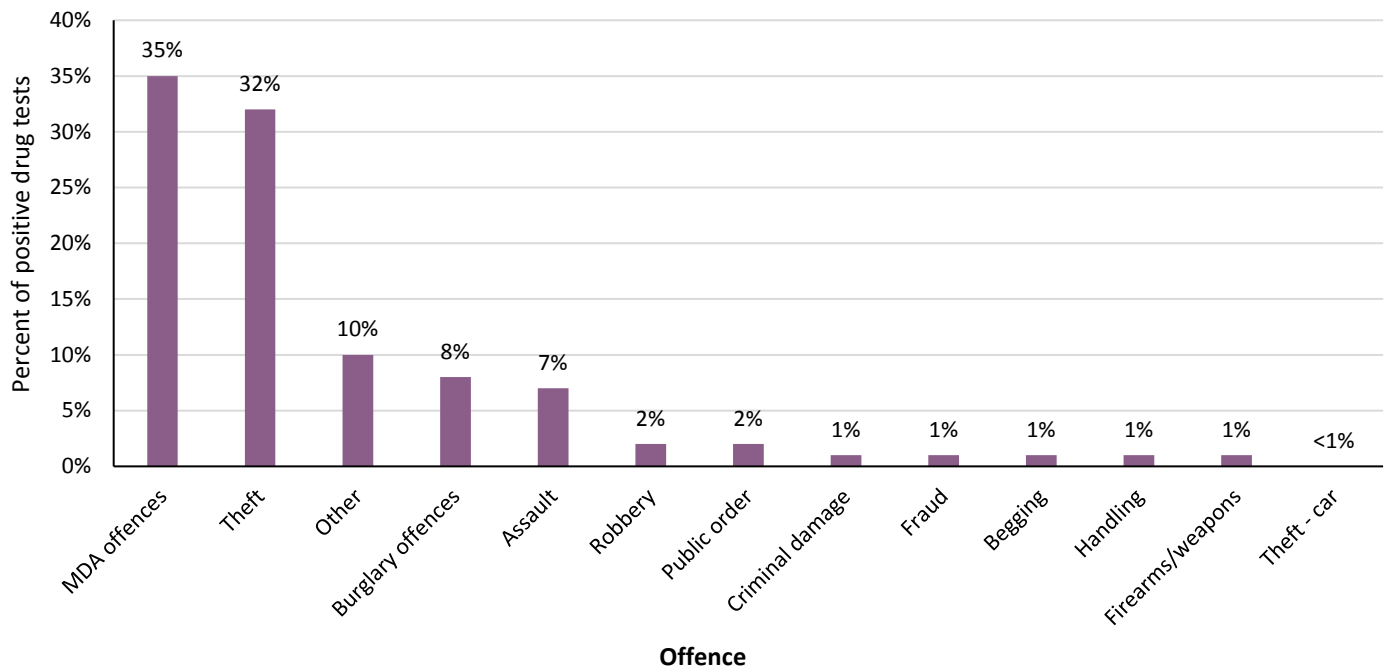
Figure 4: Positive drug tests at Liverpool’s custody suites by time of test, midweek vs. weekend (2017)



Police drug testing data capture the offence that led to the arrest and subsequent drug test. More than a third (35%) of positive drug test records in Liverpool in 2017 reported Misuse of Drugs Act (MDA) offences (n=319), followed by theft offences (n=290; 32%; Figure 5). In comparison, data for all positive drug tests across Merseyside in 2017 reported a lower proportion of MDA offences (31%) and a higher proportion of theft (38%).

⁴ Please note that this is based on when St Anne Street is staffed with a drugs worker.

Figure 5: Positive drug tests at Liverpool's custody suites by offence (2017)



DEMOGRAPHICS

Males accounted for over four in five (83%) positive drug tests in Liverpool in 2017 (n=759), which is the same proportion as the overall Merseyside figure.

Figure 6 shows arrestees aged 18-24 years and 25-29 years each accounted for 17% of those testing positive in 2017 at Liverpool's custody suites (n=153 and 151 respectively). Proportions are similar to those recorded across Merseyside.

Figure 6: Positive drug tests at Liverpool's custody suites by age group (2017)

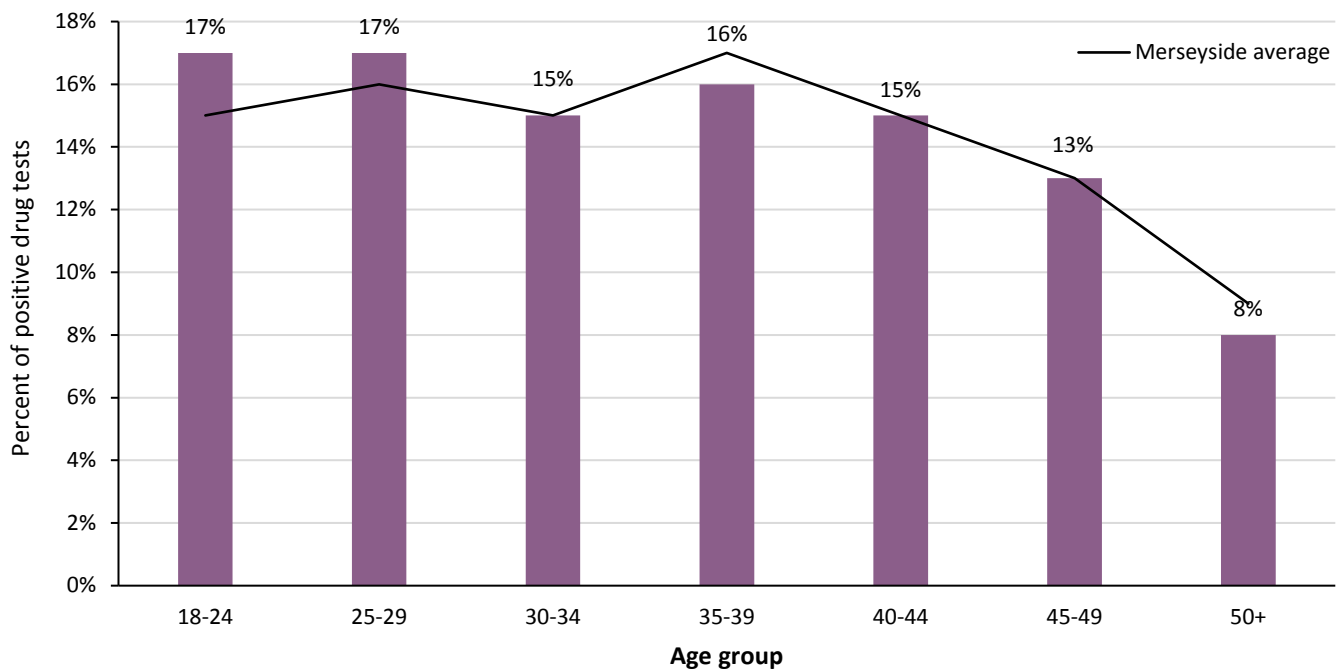


Table 2 shows some differences in age group proportions across gender in Liverpool. Although there were smaller numbers of females, there were larger proportions of older females (aged 35 years and over) when compared to males.

Table 2: Positive drug tests at Liverpool’s custody suites by age group and gender (2017)

| Age group | Females | | Males | | Total | |
|--------------|------------|-------------|------------|-------------|------------|-------------|
| | n | % | n | % | n | % |
| 18-24 | 13 | 8% | 140 | 18% | 153 | 17% |
| 25-29 | 17 | 11% | 134 | 18% | 151 | 17% |
| 30-34 | 18 | 12% | 120 | 16% | 138 | 15% |
| 35-39 | 37 | 24% | 108 | 14% | 145 | 16% |
| 40-44 | 26 | 17% | 115 | 15% | 141 | 15% |
| 45-49 | 27 | 18% | 88 | 12% | 115 | 13% |
| 50+ | 16 | 10% | 54 | 7% | 70 | 8% |
| Total | 154 | 100% | 759 | 100% | 913 | 100% |

The majority of those arrested who tested positive in Liverpool in 2017 were White European (n=864; 95%), compared to 96% across Merseyside, and around three-quarters (76%) were resident in Liverpool (n=596)⁵.

LIVERPOOL RESIDENTS

OVERVIEW

Of the 22,808 attempted drug tests across Merseyside between January 2014 and December 2017, 37% were carried out on Liverpool residents (n=8,521). It should be noted that 18% of records across the four-year period did not have a Drug (and Alcohol) Action Team (D[A]AT) of residence recorded and therefore figures do not represent a true reflection of Liverpool residents arrested and drug tested across Merseyside.

Around three-quarters (76%) of Liverpool residents were tested in one of Liverpool’s custody suites (n=6,480; Table 3). Overall, the number of Liverpool residents drug tested across Merseyside reduced by 72% between 2014 and 2016. However, they increased by 5% between 2016 and 2017, which is likely attributed to an increase in the recording of D(A)AT of residence in 2017⁶. The largest reduction in attempted drug tests was between 2015 and 2016 (48% decrease), followed by a 45% reduction between 2014 and 2015.

Table 3: Number of attempted drug tests for Liverpool residents by custody suite area and year (2014-17)

| Area | 2014 | 2015 | 2016 | 2017 | Total |
|--------------|--------------|--------------|--------------|--------------|--------------|
| Liverpool | 3403 | 1539 | 717 | 821 | 6,480 |
| Sefton | 335 | 301 | 93 | 83 | 812 |
| St Helens | 96 | 153 | 73 | 50 | 372 |
| Wirral | 174 | 201 | 249 | 233 | 857 |
| Total | 4,008 | 2,194 | 1,132 | 1,187 | 8,521 |

⁵ Drug (and Alcohol) Action Team (D[A]AT) of residence was missing for 127 records of the positive drug tests carried out in Liverpool.

⁶ Records missing D(A)AT of residence: 2014=17%; 2015=21%; 2016=25%; 2017=11%.

Figure 7 shows the number of attempted drug tests across Merseyside for Liverpool residents by month and year, clearly demonstrating the reduction in the number of tests between 2014 and 2016. There was a substantial drop in numbers in August and September 2015, following the implementation of targeted testing at Liverpool’s custody suites. The lowest number of attempted tests for Liverpool residents was in January 2017 (n=55), while tests were highest in January 2014 (n=357) and March 2014 (n=359).

Figure 7: Number of attempted drug tests for Liverpool residents by month/year (2014-17)



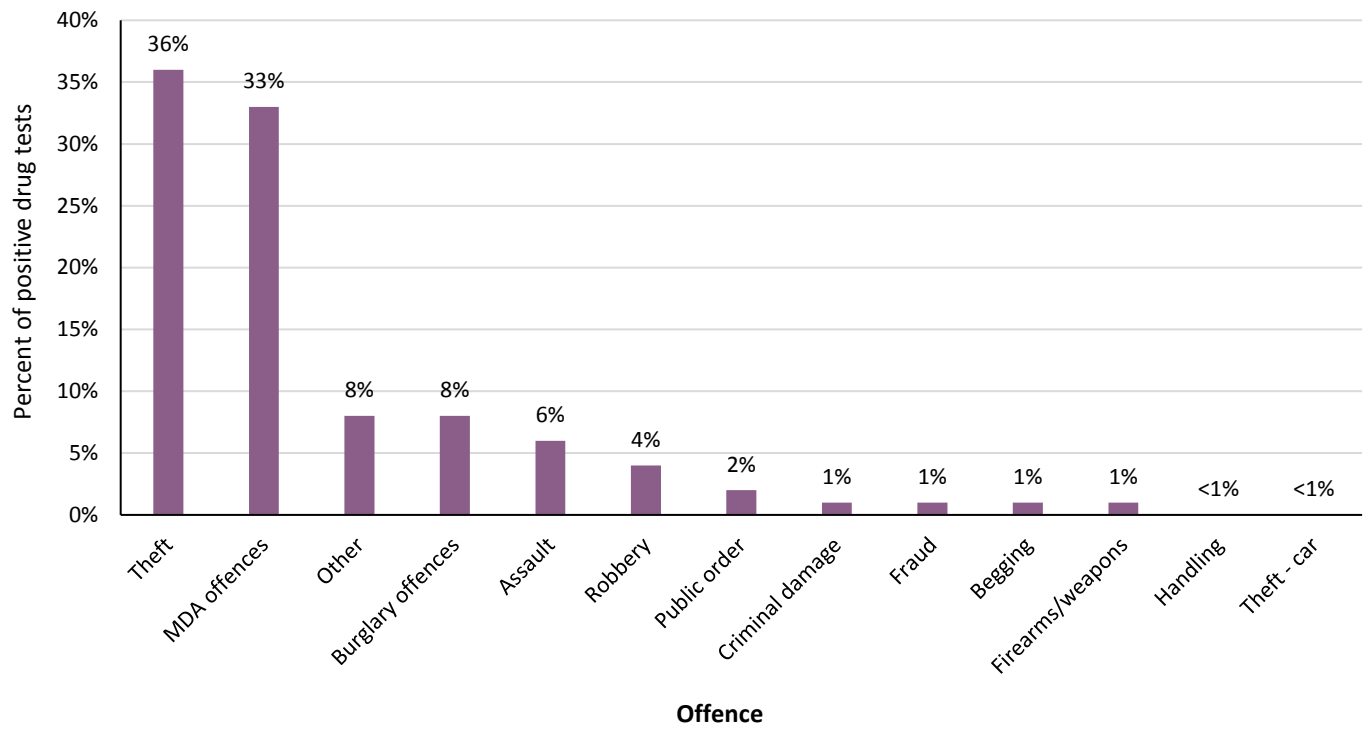
DRUG TESTING ACTIVITY

Of the 1,187 attempted drug tests on Liverpool residents in 2017, 1,172 were successful and 879 were positive tests (75% of the successful tests were positive)⁷. Just over half (53%) of the positive tests were for opiate metabolites (both cocaine and opiates = 408 [46%]; opiates only = 54 [6%]), while the remaining positive tests were for cocaine only (n=417; 47%). The proportion of Liverpool residents who tested positive for opiate metabolites was the same as Merseyside overall.

Theft offences accounted for the largest proportion of Liverpool residents testing positive in 2017 (n=313; 36%), followed by MDA offences (n=286; 33%; Figure 8). In comparison, data for all positive drug tests across Merseyside in 2017 reported a higher proportion of theft (38%) and a lower proportion of MDA offences (31%).

⁷ In 2017, 11% of all positive drug tests did not have a D(A)AT of residence recorded.

Figure 8: Positive drug tests for Liverpool residents by offence (2017)



DEMOGRAPHICS

Over four in five (82%) Liverpool residents testing positive in 2017 were male (n=718). This is a similar proportion as the overall Merseyside figure (83%).

Liverpool residents aged 35-39 years accounted for the largest proportion of those testing positive in 2017 (n=154; 18%), followed by those aged 40-44 years (n=152; 17%; Figure 9). The proportion of Liverpool residents aged 18-24 years was lower than the Merseyside average, while it was higher for those aged 40-44 years.

Figure 9: Positive drug tests for Liverpool residents by age group (2017)

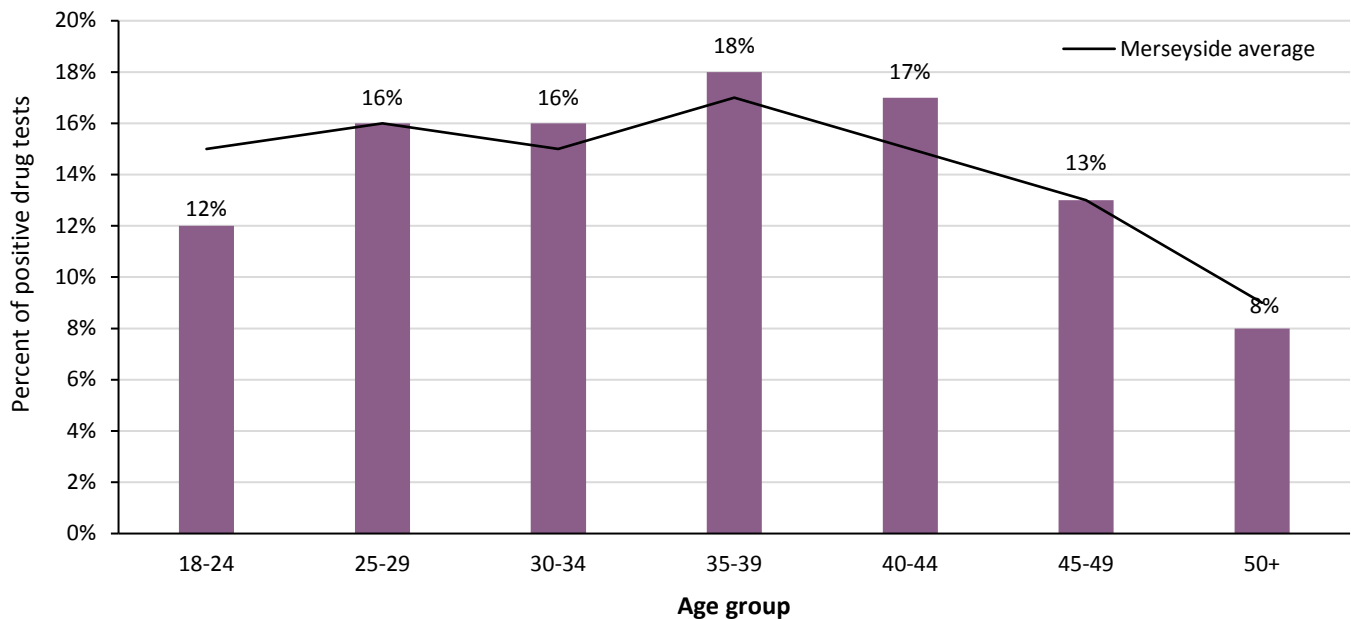


Table 4 shows some differences in age group proportions across gender for Liverpool residents. Although there were smaller numbers of females, there were larger proportions aged 35-39 years, 40-44 years and 45-49 years (20%, 19% and 22% respectively) when compared to males (17%, 17% and 11% respectively).

Table 4: Positive drug tests for Liverpool residents by age group and gender (2017)

| Age group | Females | | Males | | Total | |
|--------------|------------|-------------|------------|-------------|------------|-------------|
| | n | % | n | % | n | % |
| 18-24 | 11 | 7% | 98 | 14% | 109 | 12% |
| 25-29 | 20 | 12% | 118 | 16% | 138 | 16% |
| 30-34 | 20 | 12% | 118 | 16% | 138 | 16% |
| 35-39 | 33 | 20% | 121 | 17% | 154 | 18% |
| 40-44 | 30 | 19% | 122 | 17% | 152 | 17% |
| 45-49 | 35 | 22% | 80 | 11% | 115 | 13% |
| 50+ | 12 | 7% | 61 | 8% | 73 | 8% |
| Total | 161 | 100% | 718 | 100% | 879 | 100% |

The majority of Liverpool residents arrested who tested positive in 2017 were White European (n=840; 96%). This is the same proportion for records across Merseyside.

SUMMARY

- Between 2014 and 2017, attempted drug tests across Merseyside reduced by 74%. They reduced by 76% at Liverpool’s custody suites and by 70% for Liverpool residents across Merseyside (there was actually an increase in the number of tests on Liverpool residents between 2016 and 2017).
- In 2017, there were 913 positive drug tests carried out at Liverpool’s custody suites, compared to 879 Liverpool residents testing positive across Merseyside.
- Over half (53%) of positive tests across Merseyside in 2017 were for opiate metabolites. In comparison, a somewhat lower proportion was recorded at Liverpool’s custody suites (47%), while a similar proportion was recorded for Liverpool residents (52%).
- Just under two in five (38%) positive tests across Merseyside in 2017 reported theft, while it was lower for tests carried out at Liverpool’s custody suites and for tests carried out on Liverpool residents (32% and 36% respectively). MDA offences accounted for the largest proportion of tests carried out at Liverpool’s custody suites (35%).
- Across Merseyside, the majority (83%) were male. A similar proportion was also reported for tests carried out in Liverpool’s custody suites (82%) and on Liverpool residents (83%).
- Those aged 18-24 years and 25-29 years (17% each) accounted for the largest proportion of positive tests at Liverpool’s custody suites but those aged 35-39 years and 40-44 years (18% and 17% respectively) accounted for the largest proportion of positive tests for Liverpool residents. Proportions for these age groups for both tests carried out in Liverpool and tests carried out on Liverpool residents are slightly higher than the Merseyside average.

RECOMMENDATIONS

- The drug testing process is the main criminal justice route whereby offenders who use drugs are identified and assessed for treatment. Local police drug testing data are not available through other reporting mechanisms; therefore this resource should be utilised by all stakeholders regularly. All partners in this process should utilise available data which look at trends over time; for example, total attempted drug tests and positive drug test rates. This information will enable stakeholders to observe any changes and/or trends within their local area and across Merseyside, as well as investigate the reasons for these trends. This should assist in evidencing any process changes that may be needed, in addition to highlighting potential gaps or barriers that may prevent these clients from engaging with treatment services.
- The number of attempted drug tests across Merseyside has decreased substantially (74% decrease between 2014 and 2017), which is likely due to the implementation of targeted testing. Targeted testing aimed to reduce the number of negative tests, and as this profile shows, the positive drug test rate has increased since its implementation. However, research suggests individuals who would be appropriate for treatment are not being drug tested under targeted testing. Collins et al. (2017b) found more than half of a cohort of individuals who tested positive for Class A drugs and continued to offend, were not drug tested at subsequent arrests. Therefore stakeholders should consider ways to increase drug testing and identify offenders for these interventions.
- The recording of the arrestee's D(A)AT of residence is valuable for treatment agencies in identifying individuals tested across Merseyside, and is even more critical in areas where there is no custody suite. Between 2014 and 2017, 18% of attempted drug tests were missing the D(A)AT of residence; however the completion of this data item has improved substantially since July 2017 (on average, completion of D[A]AT since July 2017 has been 100%). Merseyside Police should continue to ensure this information is recorded to enable more accurate analysis and a comprehensive understanding of the residents across the five Merseyside areas.
- The police drug testing dataset enables client profiling, including Class A drug use, offending, gender, age, ethnicity and residency. This information is key in identifying likely presenters through drug testing, and can impact on the resources and services required to cater for the needs of these individuals in an efficient manner in the custody suite, drug treatment service and/or local community. With resources and budgets constantly under scrutiny, this information should be used to ensure these individuals have a successful drug treatment experience. Furthermore, the dataset should be monitored in order to identify any changes in client profiling. For example, a previous drug testing report identified those aged 30-34 years accounted for the largest proportion of arrestees testing positive at Liverpool's custody suites in 2015/16 (Critchley and Whitfield, 2016), while this profile for 2017 shows the largest proportions were for those aged 18-24 years and 25-29 years. Furthermore, this profile identified a larger proportion of arrestees testing positive in a Liverpool custody suite for cocaine only in 2017, compared to the previous report.
- It is imperative that there are effective and prompt communication channels between the police in the custody suites, the local treatment agency and all other relevant treatment agencies across Merseyside. Although organisational operations may differ considerably, an overarching aim of assisting offenders who use drugs towards treatment should be shared by all stakeholders and facilitated as much as possible, with a clear understanding of the RA process. High levels of communication are particularly relevant when out of hours and when dealing with residents of Knowsley and St Helens, who currently do not have a local custody suite. Regular feedback of any issues arising should be encouraged and addressed, as well as adequate training where and when required.

- This report found that the number of tests at the weekend peaked between 10:00 and 11:59, during which time the custody suite was not staffed with a drugs worker. Addaction should review their coverage time at the custody suite at weekends, which could assist in more effective targeting of resources.

These recommendations are unlikely to be achieved without sustained working between all stakeholders; however their implementation would likely ensure offenders who use drugs are referred to treatment services appropriately and have a successful and positive drug treatment experience.

APPENDICES

APPENDIX A

Number of attempted drug tests by custody suite and year, Liverpool (2014-17)

| Custody suite | 2014 | 2015 | 2016 | 2017 | Total |
|----------------|--------------|--------------|--------------|--------------|---------------|
| Belle Vale | 0 | 219 | 0 | 0 | 219 |
| St Anne Street | 3,668 | 1,594 | 1,261 | 1,173 | 7,696 |
| Wavertree | 1,585 | 902 | 38 | 93 | 2,618 |
| Total | 5,253 | 2,715 | 1,299 | 1,266 | 10,533 |

Number of positive drug tests by custody suite and year, Liverpool (2014-17)

| Custody suite | 2014 | 2015 | 2016 | 2017 | Total |
|----------------|--------------|--------------|------------|------------|--------------|
| Belle Vale | 0 | 118 | 0 | 0 | 118 |
| St Anne Street | 1,856 | 869 | 915 | 841 | 4,481 |
| Wavertree | 697 | 420 | 27 | 72 | 1,216 |
| Total | 2,553 | 1,407 | 942 | 913 | 5,815 |

Overview of figures by custody suite area (2017)⁸

| | Liverpool | Sefton | St Helens | Wirral | Merseyside |
|---|-----------------------------|-----------|------------|-----------------------------|-------------|
| Overview | | | | | |
| Attempted tests (n) | 1,266 | 423 | 316 | 792 | 2,797 |
| Successful tests (n & % ⁹) | 1,254 (99%) | 420 (99%) | 315 (100%) | 781 (99%) | 2,770 (99%) |
| Positive tests (n & % ¹⁰) | 913 (73%) | 334 (80%) | 223 (71%) | 621 (80%) | 2,091 (75%) |
| Test results (%) | | | | | |
| Negative | 27% | 20% | 29% | 20% | 25% |
| Positive | 73% | 80% | 71% | 80% | 75% |
| <i>Cocaine only</i> | 53% | 48% | 47% | 40% | 47% |
| <i>Opiates only</i> | 5% | 9% | 7% | 7% | 6% |
| <i>Both (cocaine & opiates)</i> | 42% | 43% | 47% | 53% | 46% |
| Midweek vs. weekend (%) | | | | | |
| Midweek | 67% | 69% | 71% | 69% | 69% |
| Weekend | 33% | 31% | 29% | 31% | 31% |
| % of tests carried out when staffed with drugs worker | 81% midweek; 49% weekend | 49% | 40% | 48% midweek; 31% weekend | n/a |
| Offence (%) | | | | | |
| MDA offences | 35% | 33% | 27% | 26% | 31% |
| Theft | 32% | 35% | 40% | 46% | 38% |
| Gender (%) | | | | | |
| Females | 17% | 21% | 12% | 17% | 17% |
| Males | 83% | 79% | 88% | 83% | 83% |
| Age group (%) | | | | | |
| 18-24 | 17% | 14% | 19% | 13% | 15% |
| 25-29 | 17% | 17% | 16% | 15% | 16% |
| 30-34 | 15% | 15% | 18% | 14% | 15% |
| 35-39 | 16% | 17% | 18% | 17% | 17% |
| 40-44 | 15% | 14% | 12% | 16% | 15% |
| 45-49 | 13% | 14% | 11% | 15% | 13% |
| 50+ | 8% | 9% | 6% | 11% | 9% |
| Ethnicity (%) | | | | | |
| White European | 95% | 98% | 99% | 97% | 96% |
| Area of residence (%) | | | | | |
| Knowsley | 6% | 12% | 12% | 2% | 6% |
| Liverpool | 76% | 21% | 19% | 31% | 47% |
| Sefton | 5% | 35% | 5% | 8% | 11% |
| St Helens | 2% | 25% | 59% | 0% | 11% |
| Wirral | 5% | 1% | 1% | 55% | 20% |
| Outside of Merseyside | 6% | 8% | 4% | 4% | 6% |

⁸ All figures are for January to December 2017 only, although St Helens custody suite closed mid-August 2017. Excluding 'Overview' and 'Test results', figures are for positive tests only.

⁹ Per cent of attempted tests.

¹⁰ Per cent of successful tests. This is different to the positive drug rate reported in the profile, which looks at individuals only.

Overview of figures by area of residence (2017)¹¹

| | Knowsley | Liverpool | Sefton | St Helens | Wirral | Merseyside ¹² |
|---|-----------|-------------|-----------|-----------|-----------|--------------------------|
| Overview | | | | | | |
| Attempted tests (n) | 154 | 1,187 | 257 | 266 | 476 | 2,797 |
| Successful tests (n & % ¹³) | 152 (99%) | 1,172 (99%) | 255 (99%) | 264 (99%) | 472 (99%) | 2,770 (99%) |
| Positive tests (n & % ¹⁴) | 111 (73%) | 879 (75%) | 207 (81%) | 200 (76%) | 367 (78%) | 2,091 (75%) |
| Test results (%) | | | | | | |
| Negative | 27% | 25% | 19% | 24% | 22% | 25% |
| Positive | 73% | 75% | 81% | 76% | 78% | 75% |
| <i>Cocaine only</i> | 57% | 47% | 51% | 41% | 38% | 47% |
| <i>Opiates only</i> | 5% | 6% | 6% | 9% | 7% | 6% |
| <i>Both (cocaine & opiates)</i> | 38% | 46% | 43% | 51% | 55% | 46% |
| Offence (%) | | | | | | |
| MDA offences | 36% | 33% | 30% | 28% | 24% | 31% |
| Theft | 26% | 36% | 34% | 43% | 49% | 38% |
| Gender (%) | | | | | | |
| Females | 14% | 18% | 19% | 17% | 17% | 17% |
| Males | 86% | 82% | 81% | 83% | 83% | 83% |
| Age group (%) | | | | | | |
| 18-24 | 19% | 12% | 14% | 23% | 14% | 15% |
| 25-29 | 16% | 16% | 16% | 18% | 14% | 16% |
| 30-34 | 11% | 16% | 20% | 14% | 11% | 15% |
| 35-39 | 13% | 18% | 20% | 13% | 19% | 17% |
| 40-44 | 11% | 17% | 10% | 15% | 13% | 15% |
| 45-49 | 15% | 13% | 12% | 13% | 16% | 13% |
| 50+ | 15% | 8% | 9% | 6% | 13% | 9% |
| Ethnicity (%) | | | | | | |
| White European | 97% | 96% | 98% | 99% | 98% | 96% |

¹¹ All figures are for January to December 2017 only, although St Helens custody suite closed mid-August 2017. Excluding 'Overview' and 'Test results', figures are for positive tests only.

¹² Merseyside figures are for drug tests across Merseyside, not Merseyside residents i.e. figures include drug tests for those resident outside of Merseyside.

¹³ Per cent of attempted tests.

¹⁴ Per cent of successful tests. This is different to the positive drug rate reported in the profile, which looks at individuals only.

REFERENCES

Collins P, Critchley, K, Whitfield M (2017a). *Criminal Justice Project: Drug Interventions Programme – Wirral DIP Activity Profile (2016/17)* [online]. Available at: <https://phi.ljmu.ac.uk/wp-content/uploads/2017/12/Wirral-DIP-Activity-Profile-1617.pdf> [accessed March 2018].

Collins P, Critchley, K, Whitfield M (2017b). *Criminal Justice Project: Drug Interventions Programme – Re-offending of clients testing positive for Class A drugs across Merseyside* [online]. Available at: <https://phi.ljmu.ac.uk/wp-content/uploads/2017/10/Re-offending-of-arrestees-testing-positive-for-class-A-drugs-across-Merseyside.pdf> [accessed March 2018].

Critchley K and Whitfield M (2016). *Criminal Justice Project: Drug Interventions Programme – Liverpool Drug Testing Profile (2013/14 to 2015/16)* [online]. Available at: <https://phi.ljmu.ac.uk/wp-content/uploads/2016/10/Liverpool-Drug-Testing-Profile.pdf> [accessed March 2018].

Home Office (2010). *Operational Process Guidance for Implementation of Testing on Arrest, Required Assessment and Restriction on Bail* [online]. Available at: https://www.gov.uk/government/uploads/system/uploads/attachment_data/file/97792/DTOA-Guidance.pdf [accessed March 2018].

ACKNOWLEDGEMENTS

With special thanks to Merseyside Police for providing drug testing data and their ongoing support. Thank you also to the commissioners at Liverpool City Council and to Addaction. Finally, thank you to Jenny Germain at the Public Health Institute for her help in proof reading this profile and Laura Heeks for providing the report covers.

