



Kramer, M. S., Davies, N., Oken, E., Martin, R. M., Dahhou, M., Zhang, X., & Yang, S. (2018). Infant feeding and growth: Putting the horse before the cart. *American Journal of Clinical Nutrition*, 107(4), 635-639.
<https://doi.org/10.1093/ajcn/nqy008>

Peer reviewed version

Link to published version (if available):
[10.1093/ajcn/nqy008](https://doi.org/10.1093/ajcn/nqy008)

[Link to publication record in Explore Bristol Research](#)
PDF-document

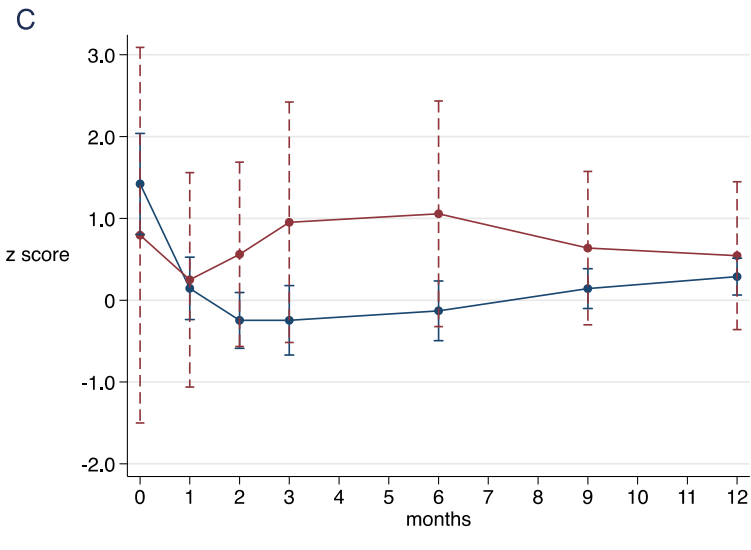
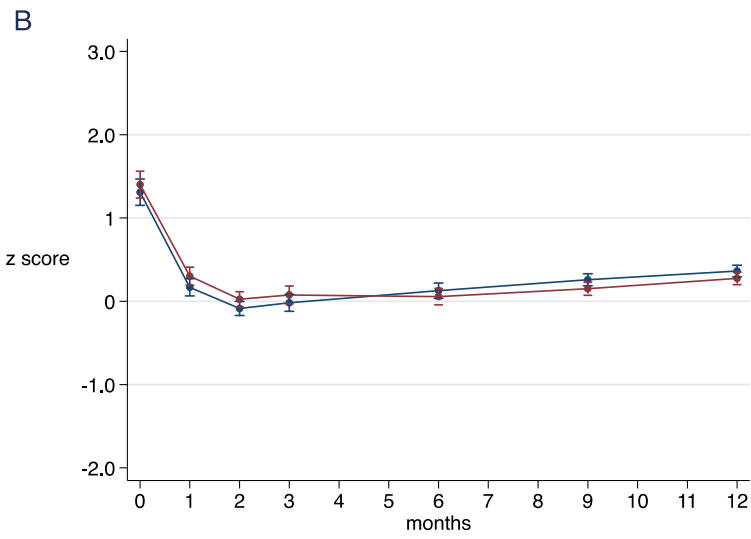
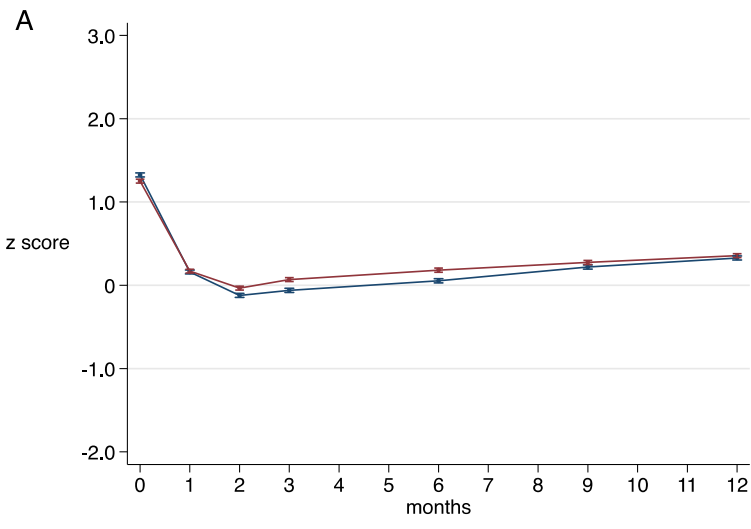
University of Bristol - Explore Bristol Research

General rights

This document is made available in accordance with publisher policies. Please cite only the published version using the reference above. Full terms of use are available:
<http://www.bristol.ac.uk/pure/about/ebr-terms>

Online Supporting Material

Supplemental Figure 2. LAZ from birth to 12 months in groups according to the three analytic approaches. Supplemental Figure 1A: intention-to-treat analysis comparing intervention (red) vs control (blue) groups (n=16,082-17,046). Supplemental Figure 1B: observational analysis comparing infants breastfed for ≥ 12 months (red) vs < 12 months (blue) (n=16,079-16,602). Supplemental Figure 1C: instrumental variable analysis comparing infants breastfed for ≥ 12 months (red) vs < 12 months (blue) (n=16,079-16,602). In all three panels, the vertical error bars denote 95% confidence intervals. Intention-to-treat and observational analyses are based on cluster-adjusted MIXED models in SAS (version 9.2; Cary, NC), while instrumental variable analyses used the ivreg2 procedure in STATA (version 9.4; Seattle, WA).



Online Supporting Material

Supplemental Figure 3. BMIZ from birth to 12 months in groups according to the three analytic approaches. Supplemental Figure 2A: intention-to-treat analysis comparing intervention (red) vs control (blue) groups (n=16,082-17,046). Supplemental Figure 2B: observational analysis comparing infants breastfed for ≥ 12 months (red) vs < 12 months (blue) (n=16,079-16,602). Supplemental Figure 2C: instrumental variable analysis comparing infants breastfed for ≥ 12 months (red) vs < 12 months (blue) (n=16,079-16,602). In all three panels, the vertical error bars denote 95% confidence intervals. Intention-to-treat and observational analyses are based on cluster-adjusted MIXED models in SAS (version 9.2; Cary, NC), while instrumental variable analyses used the ivreg2 procedure in STATA (version 9.4; Seattle, WA).

