

A GLIMPSE AT QUASAR HOST GALAXY FAR-UV EMISSION USING DAMPED Ly α 's AS NATURAL CORONAGRAPHs

ZHENG CAI^{1,2}, XIAOHUI FAN¹, PASQUIER NOTERDAEME³, RAN WANG¹, IAN MCGREER¹, BILL CARITHERS⁴, FUYAN BIAN^{5,14}, JORDI MIRALDA-ESCUDE^{6,7}, HAYLEY FINLEY³, ISABELLE PÂRIS⁸, DONALD P. SCHNEIDER^{9,10}, NADIA L. ZAKAMSKA¹¹, JIAN GE¹², PATRICK PETITJEAN³, AND ANZE SLOSAR¹³

¹ Steward Observatory, University of Arizona, Tucson, AZ 85721, USA; caiz at email.arizona.edu

² Physics Department, University of Arizona, Tucson, AZ 85721, USA

³ Institut d'Astrophysique de Paris, CNRS-UPMC, UMR7095, 98bis bd Arago, F-75014 Paris, France

⁴ Lawrence Berkeley National Laboratory, 1 Cyclotron Road, Berkeley, CA, USA

⁵ Research School of Astronomy and Astrophysics, Australian National University, Canberra, Weston Creek, ACT, 2611, Australia

⁶ Institució Catalana de Recerca i Estudis Avançats, Barcelona, Spain

⁷ Institut de Ciències del Cosmos, Universitat de Barcelona, Spain

⁸ Departamento de Astronomía, Universidad de Chile, Casilla 36-D, Santiago, Chile

⁹ Department of Astronomy and Astrophysics, The Pennsylvania State University, University Park, PA 16802, USA

¹⁰ Institute for Gravitation and the Cosmos, The Pennsylvania State University, University Park, PA 16802, USA

¹¹ Department of Physics & Astronomy, Johns Hopkins University, 3400 N. Charles St., Baltimore, MD 21218, USA

¹² Department of Astronomy, University of Florida, Gainesville, FL, USA

¹³ Brookhaven National Laboratory, Upton, NY 11973, USA

Received 2013 December 18; accepted 2014 August 4; published 2014 September 16

ABSTRACT

In merger-driven models of massive galaxy evolution, the luminous quasar phase is expected to be accompanied by vigorous star formation in quasar host galaxies. In this paper, we use high column density damped Ly α (DLA) systems along quasar sight lines as natural coronagraphs to directly study the far-UV (FUV) radiation from the host galaxies of luminous background quasars. We have stacked the spectra of ~ 2000 DLA systems ($N_{\text{HI}} > 10^{20.6} \text{ cm}^{-2}$) with a median absorption redshift $\langle z \rangle = 2.6$ selected from quasars observed in the SDSS-III Baryon Oscillation Spectroscopic Survey. We detect residual flux in the dark troughs of the composite DLA spectra. The level of this residual flux significantly exceeds systematic errors in the Sloan Digital Sky Survey fiber sky subtraction; furthermore, the residual flux is strongly correlated with the continuum luminosity of the background quasar, while uncorrelated with DLA column density or metallicity. We conclude that the flux could be associated with the average FUV radiation from the background quasar host galaxies (with medium redshift $\langle z \rangle = 3.1$) that is not blocked by the intervening DLA. Assuming that all of the detected flux originates from quasar hosts, for the highest quasar luminosity bin ($\langle L \rangle = 2.5 \times 10^{13} L_{\odot}$), the host galaxy has an FUV intensity of $1.5 \pm 0.2 \times 10^{40} \text{ erg s}^{-1} \text{ \AA}^{-1}$; this corresponds to an unobscured UV star formation rate of $9 M_{\odot} \text{ yr}^{-1}$.

Key words: cosmology: observations – galaxies: high-redshift – quasars: absorption lines – quasars: general

Online-only material: color figures

1. INTRODUCTION

It has been shown that, in the local universe, most luminous and massive spheroidal galaxies have central super-massive black holes (SMBHs; e.g., McLure et al. 1999), and that fundamental relationships exist between the black hole mass and bulge stellar mass (e.g., Magorrian et al. 1998; Ferrarese & Merritt 2000; Gebhardt et al. 2000; Marconi & Hunt 2003; Häring & Rix 2004). Likewise, many high-redshift quasars are associated with massive host galaxies (e.g., Aretxaga et al. 1998; Carilli et al. 2001). The study of high redshift quasar host galaxies opens up an important avenue to study the assembly and evolution of massive galaxies, in particular the relationship to the nuclear black holes (e.g., Schramm et al. 2008).

In the merger-driven evolutionary model, quasars are triggered by interactions or mergers of gas-rich galaxies (e.g., Sanders et al. 1988; Hopkins et al. 2006). The interaction of galaxies produces inflows of gas, which simultaneously fuels both intense star formation in the host galaxies and black hole growth (Hopkins et al. 2006). The optically luminous quasar phase follows a dusty ultra-luminous infrared galaxy (ULIRG) phase and a dust-ejection phase (e.g., Hopkins et al. 2006).

The study of star formation rate (SFR) and dust obscuration in quasar hosts would provide strong tests of this merger-driven evolutionary model, and cast light on the relationship between quasar hosts and ULIRGs. However, progress in this field has been hindered by the difficulty of isolating quasar host galaxies, since such observations are invariably hindered by the immense brightness of the quasar nuclei in the rest-frame UV/optical regime.

Observations at millimeter and submillimeter wavelengths, which correspond to the rest-frame far-IR (FIR), are crucial for probing high-redshift quasar hosts, because the FIR signal traces the large molecular gas reservoirs that fuel star formation (e.g., Carilli & Wang 2006), and the contribution from the star formation can be disentangled from the active galactic nucleus (AGN) activity in the FIR regime (e.g., Yun et al. 2000). Recent observations with the Atacama Large Millimeter/submillimeter Array (ALMA) suggest that the $z \sim 6$ quasar hosts have dynamical masses $M_{\text{dyn}} = 10^{10} - 10^{11} M_{\odot}$, one order of magnitude higher than that of typical local galaxies (Wang et al. 2013), and that the SFR of the quasar hosts ranges from a few hundred to $1000 M_{\odot} \text{ yr}^{-1}$ (e.g., Wang et al. 2011).

At shorter wavelengths, recent surveys of quasar hosts have concentrated on the near-infrared, at rest-frame wavelengths greater than the Balmer break, and where the fraction of the

¹⁴ Stromlo Fellow.

observed light due to the host galaxy is larger than that in the rest-frame UV (e.g., Guyon et al. 2006). *Hubble Space Telescope* (*HST*) and ground-based observations with excellent seeing conditions ($<0''.4$) or near-IR adaptive optics (AO) have been used to successfully detect the rest-frame optical light of the quasar host galaxies (Kukula et al. 2001; Ridgway et al. 2001; Peng et al. 2006; Targett et al. 2013; Young et al. 2014). However, at $z > 1$, obtaining reliable measurements of the host galaxy luminosities remains extremely difficult, because of the severe effect of surface brightness dimming at high redshift and the technical difficulties associated with the construction of a precise point-spread function (PSF; e.g., Hutchings et al. 2002; Targett et al. 2013).

There has been much interest in directly tracing the formation of massive young stars in high redshift galaxies in the UV (e.g., Shapley et al. 2005; Bian et al. 2012). However, it is even more difficult to resolve and detect the high redshift quasar hosts at the rest-frame UV regime with current-generation telescopes, especially in the far-UV (FUV) regime ($\lambda \sim 1000 \text{ \AA}$). The contrast between the bright nuclear point source and the host galaxy increases dramatically beyond $z > 1$, and the FUV light from host galaxies is inevitably swamped by the UV-bright nuclei. Reliable measurements of the FUV emission of the host galaxies are extremely difficult using the traditional PSF subtraction method. Recent deep *HST* observations did not detect the host galaxy of one $z = 6$ quasar in the rest-frame near-UV regime, even with delicate observations designed to minimize PSF variations and provide careful PSF subtraction (Mechtley et al. 2012). New techniques, such as coronagraphs, must be developed to block out the UV light from central AGNs, and in doing so to reveal the UV emission from host galaxies (e.g., Martel et al. 2003; Finley et al. 2013).

Damped Ly α 's (DLAs) systems at the redshift of the quasar, hereafter called associated DLAs, have recently been developed as a technique for probing quasar hosts in the UV regime (Hennawi et al. 2009; Zafar et al. 2011). The idea is that some associated DLAs completely absorb the strong Ly α emission from the central AGN, but do not fully obscure the larger-scale extended Ly α emission or Lyman continuum from the host galaxy. Therefore, associated DLAs can act as natural coronagraphs and enable the study of the Ly α emission from the quasar hosts (Finley et al. 2013). Utilizing long-slit spectroscopy, Zafar et al. (2011) reported the detection of the Lyman continuum of the host galaxy in the dark trough of the DLA in front of quasar Q0151+048A at $z = 1.9$.

In this paper, we demonstrate a novel technique for probing the FUV emission from quasar host galaxies. By stacking a large number of intervening DLAs in the foreground of quasars from the SDSS-III Baryon Oscillation Spectroscopic Survey (BOSS), we are able to detect the FUV emission of the quasar hosts within the stacked DLA dark trough. The H I clouds in galactic or circumgalactic environments are likely to be clumpy and the H I volume filling factor is expected to be significantly smaller than unity (e.g., Braun & Walterbos 1992; Borthakur et al. 2011). Therefore the clumpy H I gas may only block the quasar continuum, whereas much of the host remains unobscured. In Section 2, we discuss the observations and our DLA sample selection. The results of the composite spectra are presented in Section 3. We discuss the implication of our results on the origins of the flux in the composite DLA trough in Section 4. Throughout this paper, we adopt a cosmology based upon the five-year *Wilkinson Microwave Anisotropy Probe* data (Komatsu et al. 2009): $\Omega_{\Lambda} = 0.72$, $\Omega_m = 0.28$, $\Omega_b = 0.046$, and $H_0 = 70 \text{ km s}^{-1} \text{ Mpc}^{-1}$.

2. METHOD AND SAMPLE

2.1. Using Intervening DLAs as Coronagraphs

DLAs are characterized by a wide flat trough with zero transmitted flux (i.e., dark trough or dark core), resulting from the natural broadening of the absorption at high H I column densities. In this study, we define the DLA dark trough as a region where the flux is negligibly small; specifically, regions where the ratio of the expected flux to the continuum flux is $< 1 \times 10^{-4}$. Intervening DLAs can act as natural coronagraphs, because the quasar continuum, emitted from the centrally bright nucleus, is completely absorbed within the DLA dark trough. However, it is quite likely that regions of the extended emission from the quasar hosts are unobstructed by the intervening clumpy H I absorbers, and the extended stellar light thus leaks through and can be detected within the dark trough of the foreground DLAs.

2.2. The Clean DLA (CDLA) Sample

Our sample is selected from the BOSS (Dawson et al. 2013; Ahn et al. 2014). BOSS is a spectroscopic survey that will measure redshifts of 1.5 million luminous red galaxies and Ly α absorption toward 160,000 high redshift quasars (Eisenstein et al. 2011). One thousand optical fibers with $2''$ diameters are plugged into the 1000 holes in an aluminum plate to receive light from 160–200 quasars, 560–630 galaxies, and 100 ancillary science targets and standard stars (e.g., Dawson et al. 2013). Also, each plate contains at least 80 sky fibers that are placed on the blank area of the sky to model the background for all the science fibers. The distribution of the sky fibers is constrained to cover the entire focal plane. This design allows the sampling of the varying sky background over the focal plane of the spectrograph (e.g., Dawson et al. 2013). The BOSS spectra have a moderate resolution of $R \sim 2000$ from 3700 \AA to $10,400 \text{ \AA}$. With a typical exposure time of 1 hr for each plate, the BOSS spectra have a modest median signal-to-noise ratio (S/N) of ~ 2 – 3 per resolution element for quasars at a rest-frame wavelength of $\lambda = 1041$ – 1185 \AA (Lee et al. 2012).

The Data Release 10 Quasar (DR10Q) catalog (Pâris et al. 2014) includes 166,798 quasars detected over 6000 deg^2 , of which 117,774 are at $z > 2.15$. A combination of target selection methods (Ross et al. 2012; Bovy et al. 2011) achieved this high surface density of the high-redshift quasars. Using a fully automated procedure based on profile recognition using correlation analysis, Noterdaeme et al. (2012) constructed a catalog of DLAs and sub-DLAs with $N_{\text{HI}} > 10^{20.0} \text{ cm}^{-2}$ detected from an automatic search along DR9Q lines-of-sight. Using a similar technique, Noterdaeme et al. (2014) generated the DLA catalog for Data Release 10 (DR10).

The DLA detection technique (Noterdaeme et al. 2012, 2009) pays special attention to the low-ionization metal lines in order to remove possible blends or misidentifications. The redshift measurement is mainly based on the profile fit to the DLA. Some of the DLA redshift measurements have been refined based on the low-ionization metal lines. The equivalent width of the metal lines is obtained automatically by locally normalizing the continuum around each line of interest and then modeling the absorption lines with a Voigt profile. For non-detections, upper limits are obtained from the noise around the expected line positions.

The final BOSS DR10 DLA catalog includes 11,030 DLAs with $N_{\text{HI}} > 10^{20.3} \text{ cm}^{-2}$, continuum-to-noise ratio (CNR) > 2 , and absorption redshift $z_{\text{abs}} > 2.15$. We avoided proximate

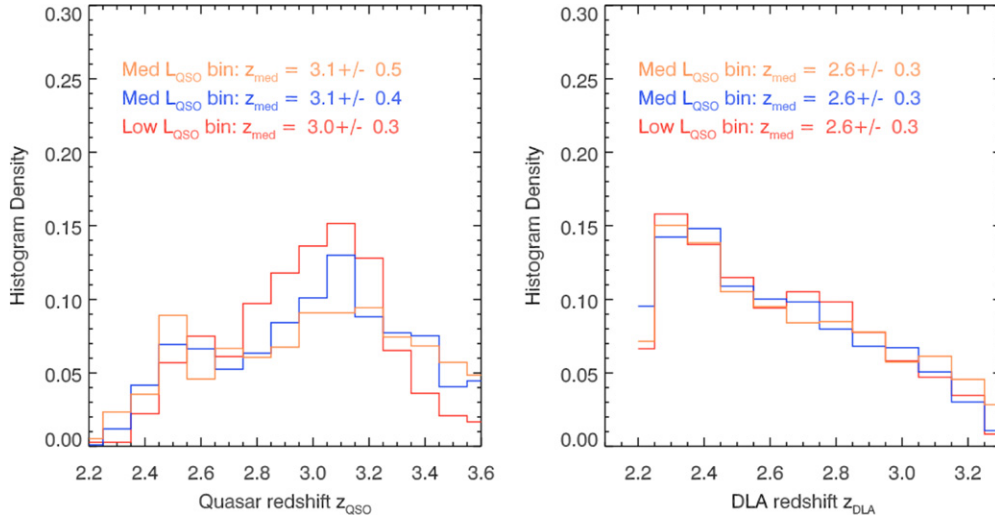


Figure 1. Right panel shows the redshift distribution of SDSS DR10 DLAs with different quasar luminosity bins. The orange histogram represents the highest quasar luminosity bin, while the red histogram represents the lowest quasar luminosity bin. The left panel presents the redshift distribution of the background quasars. The DLA redshift range we consider is $z = 2.2\text{--}3.2$. The redshift distribution of the DLAs and corresponding background quasars in different quasar luminosity bins are similar in the DLA redshift range of $z = 2.2\text{--}3.2$.

(A color version of this figure is available in the online journal.)

DLAs at velocities less than 5000 km s^{-1} from the quasar as these have a high probability of being physically associated with the local quasar environment. Strong proximate DLAs from BOSS are studied in Finley et al. (2013).

In our investigation, the DLA purity is crucial. Guided by this consideration, we include only DLAs satisfying the following stringent criteria: (1) spectra with median CNR > 4.0 ; (2) $> 3\sigma$ low-ionization metal line detections; (3) column densities of $N_{\text{HI}} > 10^{20.6} \text{ cm}^{-2}$, which requires the width of the DLA trough to be greater than four times the spectral resolution; and (4) Spearman’s correlation coefficient of the Voigt profile fitting that is greater than 0.6, which ensures an accurate estimate of the DLA column density (see details in Noterdaeme et al. 2009). Criterion (2) ensures that it is a DLA that is responsible for absorption rather than an unresolved blend of multiple narrow absorption features, while criteria (1), (3), and (4) enable an accurate determination of the column density and redshift. ~ 2300 out of 11,030 DLAs in the catalog satisfy these four criteria. Furthermore, we visually inspect the 2300 systems to confirm that they are DLAs. We eliminate ~ 40 systems close to the quasar O VI+Ly β region. Also, visual inspection enables us to find a small number of DLAs with inaccurate redshift measurements, and we pay careful attention in order to refine the redshifts for some of the DLAs according to Voigt profile fitting and metal lines if necessary. We also drop a number of DLAs with Lyman limit systems blending or strong Ly α forest absorption in both DLA wings, which make the measurements of the DLA column density and redshift difficult. A sample of 2138 DLAs pass the visual inspection. In addition, we constrain the redshift of the DLAs to the moderate redshift range of $2.2 < z < 3.2$. A sample of 1940 DLAs within the redshift range are finally selected and defined. In the remainder of the paper, we refer to these 1940 DLAs as the *clean DLA sample* (CDLA sample). In Figure 1, the right panel shows the redshift distribution of these 1940 DLAs with different quasar luminosity bins. The orange histogram represents the highest luminosity bins, while the red histogram represents the lowest luminosity bin. The left panel shows the redshift distribution for the corresponding background quasars. The redshift distribution

of DLAs in different luminosity bins is similar within the redshift range of $2.2 < z < 3.2$.

DLAs with $N_{\text{HI}} > 10^{20.6} \text{ cm}^{-2}$ have a dark trough with a rest-frame velocity width extending at least $\pm 340 \text{ km s}^{-1}$ from the center, much larger than the DLA redshift uncertainties. In addition to refining the DLA redshifts from Voigt profile fitting on the Ly α part, we use multiple low-ionization metal lines to fit the redshifts (z_{ion}) of ~ 500 DLAs. We find that the largest difference between the redshift fitted by low-ionization metal lines and the redshift fitted by the Ly α Voigt profile ($c \times \Delta z / (1+z)$) is $\sim 150 \text{ km s}^{-1}$. We also checked the DLA trough of the composite DLA spectra (see Sections 3.1 and 3.3, and also the inset in Figure 3), and the central $\pm 250 \text{ km s}^{-1}$ is consistent with a flat absorption trough within 1σ . All of this evidence supports that the DLA redshift uncertainties are much smaller than the width of DLA dark trough; and we conservatively define the dark trough in the composite spectra as the region within $\pm 150 \text{ km s}^{-1}$ about the DLA center.

3. RESIDUAL FLUX IN THE DARK TROUGH

3.1. Initial Stacking

The Sloan Digital Sky Survey (SDSS) spectra are shifted to the rest frame of the DLA while conserving the flux, i.e., $f_i(\lambda_{\text{res}}) = (1 + z_{\text{DLA}}) \times f_{i,\text{sdss}}(\lambda_{\text{obs}})$, where λ_{res} is the DLA rest-frame wavelength, λ_{obs} is the wavelength in the SDSS spectra ($\lambda_{\text{obs}} = \lambda_{\text{res}} \times (1 + z_{\text{DLA}})$), $f_i(\lambda)$ is the flux density of an individual spectrum redshifted to the rest frame, and $f_{i,\text{sdss}}(\lambda)$ is the flux density of an individual SDSS spectrum in the observed frame. In the dark trough, the flux density in each pixel (wavelength) of the composite spectra is calculated by two methods: (1) the 3σ -clipped mean of all the spectra at the same wavelength and (2) the median of all the spectra at the same wavelength. Outside the dark trough with $\lambda < 1213 \text{ \AA}$ or $\lambda > 1218 \text{ \AA}$, we take the median value to stack the spectra. We calculate the error at each pixel (wavelength) in the stacked spectrum by propagating the errors of the pixels at the same position in every individual spectrum ($\sigma_{\text{stacked},i} = 1/n \times \sqrt{\sum_{i=0}^n \sigma_i^2}$). Note that 3σ -clipping mainly removes the large outliers due to noise, without clipping

away the Ly α emission from DLA galaxy. On the one hand, even assuming that most of DLA host galaxies are as bright as a L^* galaxy at $z = 2-3$ (e.g., Shapley et al. 2003), the Ly α emission from DLA host is still submerged within the noise of the individual SDSS-III spectrum. The detailed discussion is included in Section 4.1. On the other hand, from visual inspection of the entire CDLA sample, we do not find DLAs with strong Ly α emission in the dark trough.

In the stacking process, we do not introduce any additional scaling. It is true that different quasars are different in luminosity, quasar host flux, and DLA host emission. However, in the DLA dark trough, the quasar continuum is completely blocked in the DLA dark trough. Also, for SDSS-III spectra, the average flux densities of the DLA hosts and quasar hosts are generally about or more than one order of magnitude lower than the noise level (see more details in Sections 4.1 and 4.2). For the SDSS-III spectrum, the noise is mainly due to the sky background and the CCD read noise (e.g., Dawson et al. 2013), and in the dark trough of the DLAs at $z = 2.6 \pm 0.3$, different systems generally have similar noise level. Therefore, following previous similar studies, we simply stacked the spectra without any additional scaling (e.g., Rahmani et al. 2010; Noterdaeme et al. 2014).

After the initial stacking, we find that the dark trough of the stacked DLA shows a positive offset. We calculate the mean flux density by averaging the flux density in the dark trough region. Following the discussions in Section 2.2, we conservatively define the stacked dark trough region within $\pm 150 \text{ km s}^{-1}$ about the center. For the stacking of the 3σ -clipped mean, the average dark trough flux density is $\bar{F}_{\text{dark}} = 6.5 \pm 0.6 \times 10^{-19} \text{ erg cm}^{-2} \text{ \AA}^{-1} \text{ s}^{-1}$; and for the median stacking, the average dark trough flux density is $\bar{F}_{\text{dark}} = 7.0 \pm 0.6 \times 10^{-19} \text{ erg cm}^{-2} \text{ \AA}^{-1} \text{ s}^{-1}$. A general flux residual in the stacked DLA dark trough has been documented in previous work with much smaller sample size (Rahmani et al. 2010; Pâris et al. 2012). The large DLA database of SDSS-III/BOSS DR10 enables us, for the first time, to carefully study and test the origin of the positive residual flux in the dark core. This residual flux can arise from three sources: (1) sky subtraction residual (systematic sky subtraction errors), (2) Ly α emission around $\lambda \sim 1216 \text{ \AA}$ from the DLA galaxies, and (3) FUV continua emission at $(1+z_{\text{DLA}})/(1+z_{\text{QSO}}) \times 1216 \text{ \AA} \sim 1100 \text{ \AA}$ from the quasar host galaxies that is not blocked by the foreground DLAs.

3.2. The Determination of the Sky Subtraction Residual

In order to calculate the sky subtraction residual, we select a group of 150 DLAs at $z > 3.8$ with a median redshift (z) = 4.0, and examine the flux in the DLA Lyman limit region ranging from rest-frame $\lambda = 800-900 \text{ \AA}$, where the optical depth $\tau(\lambda)$ is expected to be over 1000. For the sample of $z > 3.8$ DLAs, the Lyman limit region at rest-frame $\lambda = 820-900 \text{ \AA}$ corresponds to an observed wavelength from 4100 \AA to 4500 \AA , which covers the average wavelength of DLA trough in our CDLA sample. The expected flux of quasar continua should be negligibly small in the DLA Lyman limit region because of the large optical depth. The flux in this region can only be contributed by (1) sky-subtraction residuals, (2) unobscured escaping ionizing photons with $\lambda \lesssim 900 \text{ \AA}$ from DLA galaxies, and (3) photons from quasar hosts at even shorter wavelengths. Therefore, the average flux in DLA Lyman limit regions can be regarded as an upper limit for the sky-subtraction residual. A number of studies have found that the escape fraction is small, $\lesssim 5\%-10\%$ relative to photons escaping at 1500 \AA (Malkan et al.

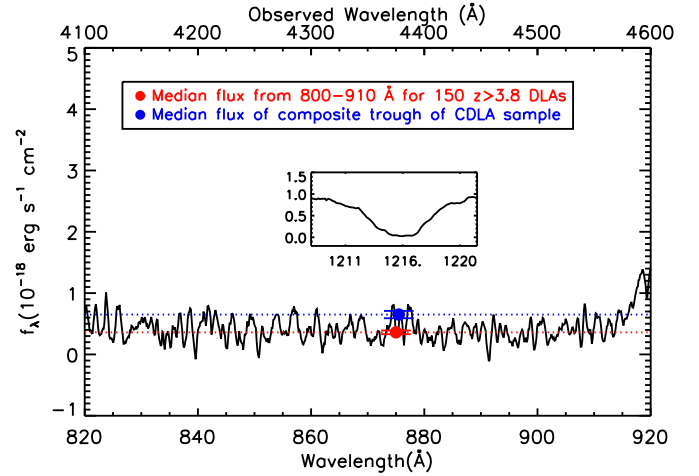


Figure 2. Composite spectra of the Lyman limit region (rest-frame 820–900 \AA) observed by stacking a group of 150 $z \geq 3.8$ DLAs with a median redshift of $z \sim 4.0$. The inset figure shows a zoom-in of the DLA absorption for the composite spectrum of the group of $z \geq 3.8$ DLAs. The stacked Lyman limit region corresponds to observed frame $\lambda_{\text{obs}} \sim 4100-4500 \text{ \AA}$. The upper limit of the sky-subtraction can be determined by averaging the flux in the composite Lyman-limit region (see Section 3.2). The average flux of the Lyman limit region (red dot) is $3.5 \pm 0.008 \times 10^{-19} \text{ erg cm}^{-2} \text{ \AA}^{-1} \text{ s}^{-1}$, and the median flux at the composite DLA dark trough (blue dot with error bar) of the CDLA sample is $7.6 \pm 0.6 \times 10^{-19} \text{ erg cm}^{-2} \text{ \AA}^{-1} \text{ s}^{-1}$, which is significantly larger than the SDSS sky-subtraction residual. The observed wavelength of blue point is determined by DLA center at the median redshift of CDLA sample.

(A color version of this figure is available in the online journal.)

2003; Siana et al. 2007; Bridge et al. 2010). This small escape fraction suggests that the ionizing photons could only have a minor or even negligible contribution to the average flux in the DLA Lyman limit region.

The 150 DLAs at $z > 3.8$ we have selected from the DLA catalog all have C II and/or Si II detections and passed the visual inspection to ensure the DLA nature. We use the median to stack the spectra at rest-frame $\lambda = 820-900 \text{ \AA}$ in the stacked spectra. Then, we average the flux from $\lambda = 820 \text{ \AA}-900 \text{ \AA}$. The average flux density is equal to $3.502 \pm 0.008 \times 10^{-19} \text{ erg cm}^{-2} \text{ \AA}^{-1} \text{ s}^{-1}$, and this value can be regarded as an upper limit of the sky-subtraction (see red dot in Figure 2). We double checked our results using the average sky subtraction residual as a function of wavelength, which is determined by the SDSS pipeline group (Bolton et al. 2012; D. J. Schlegel et al. 2014, in preparation; D. J. Schlegel et al. 2014, private communication). The sky-subtraction residual is $\sim 3 \times 10^{-19} \text{ erg cm}^{-2} \text{ \AA}^{-1} \text{ s}^{-1}$ at $\sim 4300 \text{ \AA}$, consistent with the upper limit on the sky-subtraction residual we have derived. In Figure 2, the inset shows a zoom-in of the DLA absorption for the composite spectrum of the group of $z \geq 3.8$ DLAs. Also, in Figure 2, we present the median flux in the composite DLA dark trough (blue dot with error bar) of the CDLA sample is $6.5 \pm 0.6 \times 10^{-19} \text{ erg cm}^{-2} \text{ \AA}^{-1} \text{ s}^{-1}$, which is significantly larger than the SDSS sky-subtraction residual (red dot in Figure 2). The observed wavelength of the blue dot in Figure 2 is determined by the center of the DLA trough at the median redshift of the CDLA sample.

3.3. Composite Spectra in Different Quasar Luminosity Bins

In Section 3.1, we initially stacked all the spectra of the CDLA sample, and find that the average dark trough flux density is $\bar{F}_{\text{dark}} = 6.5 \pm 0.6 \times 10^{-19} \text{ erg cm}^{-2} \text{ \AA}^{-1} \text{ s}^{-1}$, significantly greater than the upper limit of the sky subtraction residual determined in Section 3.2 (Figure 2). This dark trough flux

Table 1
Dark Trough Intensities for Different Quasar Luminosity Bins

$I_{\text{QSO}} (\lambda = 1450 \text{ \AA})$ ($\text{erg s}^{-1} \text{ \AA}^{-1}$)	L_{bol} ($10^{12} L_{\odot}$)	I_{trough} (Median) ($\text{erg s}^{-1} \text{ \AA}^{-1}$)	I_{trough} (3σ -Clipped mean) ($M_{\odot} \text{ yr}^{-1}$)	SFR_{UV} ($M_{\odot} \text{ yr}^{-1}$)
1.3×10^{43}	25.0	$16.4 \pm 2.1 \times 10^{40}$	$15.2 \pm 2.1 \times 10^{40}$	9
6.6×10^{42}	13.0	$8.8 \pm 2.3 \times 10^{40}$	$8.2 \pm 2.3 \times 10^{40}$	5
4.4×10^{42}	7.0	$3\sigma < 7.5 \times 10^{40}$	$3\sigma < 7.5 \times 10^{40}$	$3\sigma < 4.5$

Notes. The intensities I_{trough} are calculated using Equation (1) which mean the sky-subtraction residual has been corrected.

density indicates that in addition to the sky subtraction residual, flux must be contributed by other sources. In this section, we will examine and test the possible origin of the flux residual in the DLA dark trough.

In order to examine the origin of the flux residual in the DLA dark core, we will group the quasars according to their luminosities, and check if the residual intensities in the dark trough correlate with the quasar luminosities. The motivation for this experiment is that if the intensity in the stacked dark trough is mainly contributed by the Lyman continua of the foreground DLA, then this intensity should be uncorrelated with the background quasar luminosity, and we expect the three luminosity bins to yield similar intensities in the dark trough. We divide the quasar into three bins according to their luminosity bins: (1) the highest luminosity bin contains quasars with the luminosity density at 1450 \AA (L_{1450}) $> 9 \times 10^{42} \text{ erg s}^{-1} \text{ \AA}^{-1}$; (2) middle luminosity bin with $5 \times 10^{42} \text{ erg s}^{-1} \text{ \AA}^{-1} < L_{1450} < 9 \times 10^{42} \text{ erg s}^{-1} \text{ \AA}^{-1}$; and (3) low luminosity bin with $L_{1450} < 5.0 \times 10^{42} \text{ erg s}^{-1} \text{ \AA}^{-1}$. Each luminosity bin contains a similar number of quasars.

The detailed stacking procedure is as follows. We first calculate the quasar intensity for each quasar using the following expression:

$$I_{i,\text{dark}}(\lambda_{\text{res}}) = (f_{i,\text{sds}}(\lambda_{\text{obs}}) - f_{\text{sky}}) \times 4\pi D_L^2(z_{\text{QSO}}) \times (1 + z_{\text{DLA}}), \quad (1)$$

where $\lambda_{\text{obs}} = \lambda_{\text{res}} \times (1 + z_{\text{QSO}})$, and $f_{i,\text{sds}}$ is the flux density for an individual spectrum, $f_{\text{sky}} = 3.5 \times 10^{-19} \text{ erg s}^{-1} \text{ cm}^{-2}$, which is determined in Section 3.2 and further supported by SDSS calibration group (D. J. Schlegel et al. 2014, in preparation). Following the stacking method described in Section 3.1, we stack the quasar intensity $I_{i,\text{dark}}(\lambda_{\text{res}})$ for each luminosity bin by taking the 3σ -clipped mean and median value in the dark trough. Outside the dark trough, we just take the median value to stack the spectra.

Note that the 3σ -clipped mean is only a legitimate method when we stack the spectra within the dark trough. In the dark trough, the residual flux, if exists, is only in a very low level. It is necessary to first rule out the large outliers due to the noise before taking the average. However, outside the dark trough, the different quasar continua have large scatter in luminosity. The 3σ -clipping will reject a large number of bins in the continua simply because the quasars differ in luminosity. Therefore, the 3σ -clipped mean is no longer a legitimate way to stack the quasar continua outside the dark trough. Figure 3 further demonstrates this point. In Figure 3, one can see that in the DLA dark trough, the number of rejected pixels is small (only $\sim 0.5\%$ of the sample size). However, for the quasar continua at rest-frame wavelength $\lambda < 1214 \text{ \AA}$ or $\lambda > 1218 \text{ \AA}$, the number of the rejected pixels for each wavelength becomes significantly larger than 1% of the sample size. This is because outside the dark trough, the 3σ -clipping mean rejects bins in the continua because quasars differ in luminosity. We have

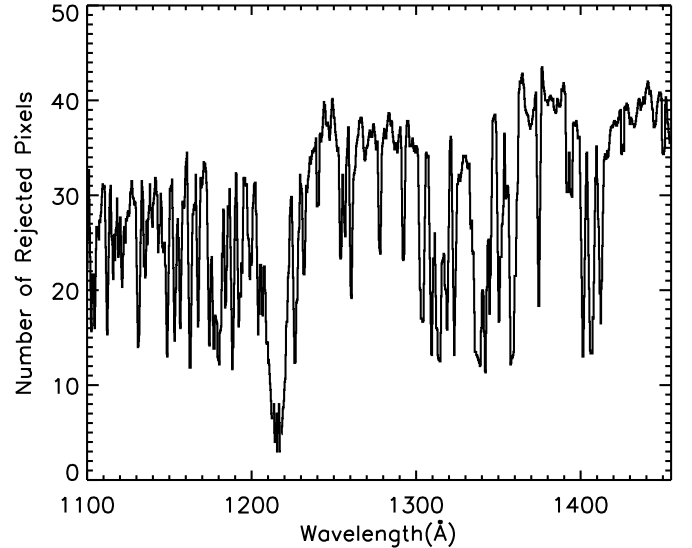


Figure 3. We present the number of 3σ rejected pixels as a function of rest-frame wavelength for the highest quasar luminosity bin. From this figure, one can see that in the dark trough region from $\lambda \sim 1214\text{--}1218 \text{ \AA}$, the number of 3σ rejected bins is small. On average, four pixels at a specific wavelength are rejected in the dark trough region, about 0.5% of the sample size (this sample contains ~ 750 DLAs). This is because in the dark trough, the 3σ -clipping only rejects large outliers due to the noise. However, for the quasar continua at $\lambda < 1214 \text{ \AA}$ or $\lambda > 1218 \text{ \AA}$, the number of the rejected pixels is significantly larger than 1% of the sample size. Outside the dark trough, the 3σ -clipping rejects large number of bins in the continua simply because the quasars differ in luminosity. Therefore, outside the DLA dark trough, the 3σ -clipped mean is no longer a legitimate way to stack the quasar continua. Outside the DLA dark trough at $\lambda < 1214 \text{ \AA}$ and $\lambda > 1218 \text{ \AA}$, we just take the median value to stack the quasar continua (see Section 3.3).

checked that, for the stacked quasar bolometric luminosity, the median value is 10% smaller than the 3σ -clipped mean, 25% lower than the average without sigma-clipping. Outside the DLA dark trough, we take the median to stack the quasar continua. In the next Section (Section 4.2), we will be consistent by only using the median composite spectrum to compare the quasar bolometric luminosity with the dark trough intensities (see details in Section 4.2).

We summarize our results in Table 1 and Figure 4. The upper panel in Figure 4 presents the composite DLA spectra in three quasar luminosity bins using the CDLA sample. The middle panel presents the 3σ -clipped mean of the DLA dark trough after removing the sky-subtraction residual (Equation (1)). The stacked dark trough, which lies between the two vertical dashed lines, is defined within $\pm 150 \text{ km s}^{-1}$ from the center (see Section 2.2). The lowest panel presents the median value of the flux residual in the DLA dark trough. The zoom-in insets in the middle and lowest panel presents the 3σ -clipped mean and median value of the overall CDLA sample, centered on the DLA absorption to show the non-detection of Ly α emission

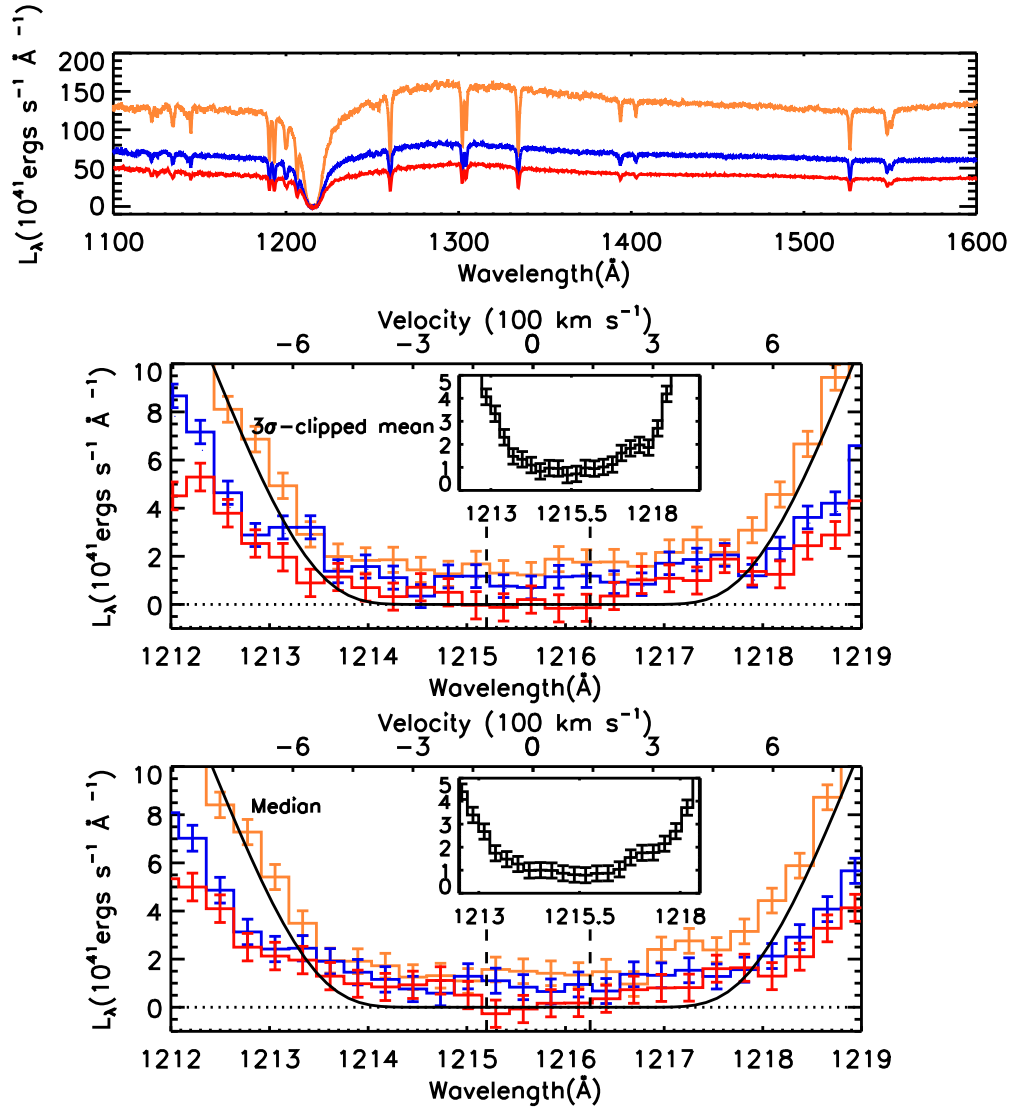


Figure 4. Upper panel shows the composite DLA ($N > 10^{20.6} \text{ cm}^{-2}$) spectra for three different luminosity bins of our CDLA sample. The middle panel shows the 3σ -clipped mean of the expanded DLA dark core region after removing the sky-subtraction residual. The middle and the lower panels demonstrate the statistically significant results that the higher dark core intensity corresponds to the higher quasar luminosity. As stated in (Section 2.2), we conservatively define the dark trough within $\pm 150 \text{ km s}^{-1}$ from the center, which is the region between the two vertical dashed lines in the middle and lower panels. The insets in the middle and lower panels present the composite spectrum of the full CDLA sample, a zoom-in of the region around wavelength $\lambda \sim 1216 \text{ \AA}$ to show the non-detection of the Ly α emission from the DLA host galaxies. The lowest panel shows the median value of the expanded DLA dark core region after subtracting the sky-subtraction residual. (A color version of this figure is available in the online journal.)

from the DLA hosts. The middle and lower panels demonstrate that the dark trough flux density is non-zero for the two higher luminosity bins, and moreover, the dark core intensity increases for the higher quasar luminosity bin. We have compared the results derived from 3σ -clipped mean and median value. We found the residual intensities derived using 3σ -clipped mean are consistent with the values obtained from the median stacking (Table 1).

Figure 5 shows that the correlation between the dark trough intensity and quasar luminosity still holds for DLAs with the largest dark troughs in the CDLA sample. DLAs with $N_{\text{HI}} > 10^{20.9} \text{ cm}^{-2}$ have an expected dark trough width within $\pm 580 \text{ km s}^{-1}$ about the center. Again, we conservatively define the dark trough region to be $\pm 250 \text{ km s}^{-1}$ about the center. The upper panel of Figure 5 shows the composite DLA ($N_{\text{HI}} > 10^{20.9} \text{ cm}^{-2}$) spectra for the same three luminosity bins with that in Figure 4. The middle panel shows the 3σ -clipped

mean of the expanded DLA dark core region after subtracting the sky-calibration residual, and the lowest panel shows the median value for the same dark trough region. The insets in the middle and lower panel present the composite spectra of the $N_{\text{HI}} > 10^{20.9} \text{ cm}^{-2}$ CDLA sample, centered on the composite DLA absorption to show the non-detection of the Ly α emission from the DLA host galaxies. The sample size of the $N_{\text{HI}} > 10^{20.9} \text{ cm}^{-2}$ CDLA sub-sample is only half of the overall CDLA sample, yet it is evident that the higher quasar luminosity bin still corresponds to a higher dark trough intensity, i.e., the dark trough intensity with highest quasar luminosity (yellow in Figure 5) is 3σ higher than that with the lowest quasar luminosity (red in Figure 5).

The relation between the quasar luminosities and the intensities in the stacked dark trough is summarized in Figure 6. The CDLA sample with $N_{\text{HI}} > 10^{20.6} \text{ cm}^{-2}$ is shown in red, and the luminosity distribution is shown in the lower panel in red.

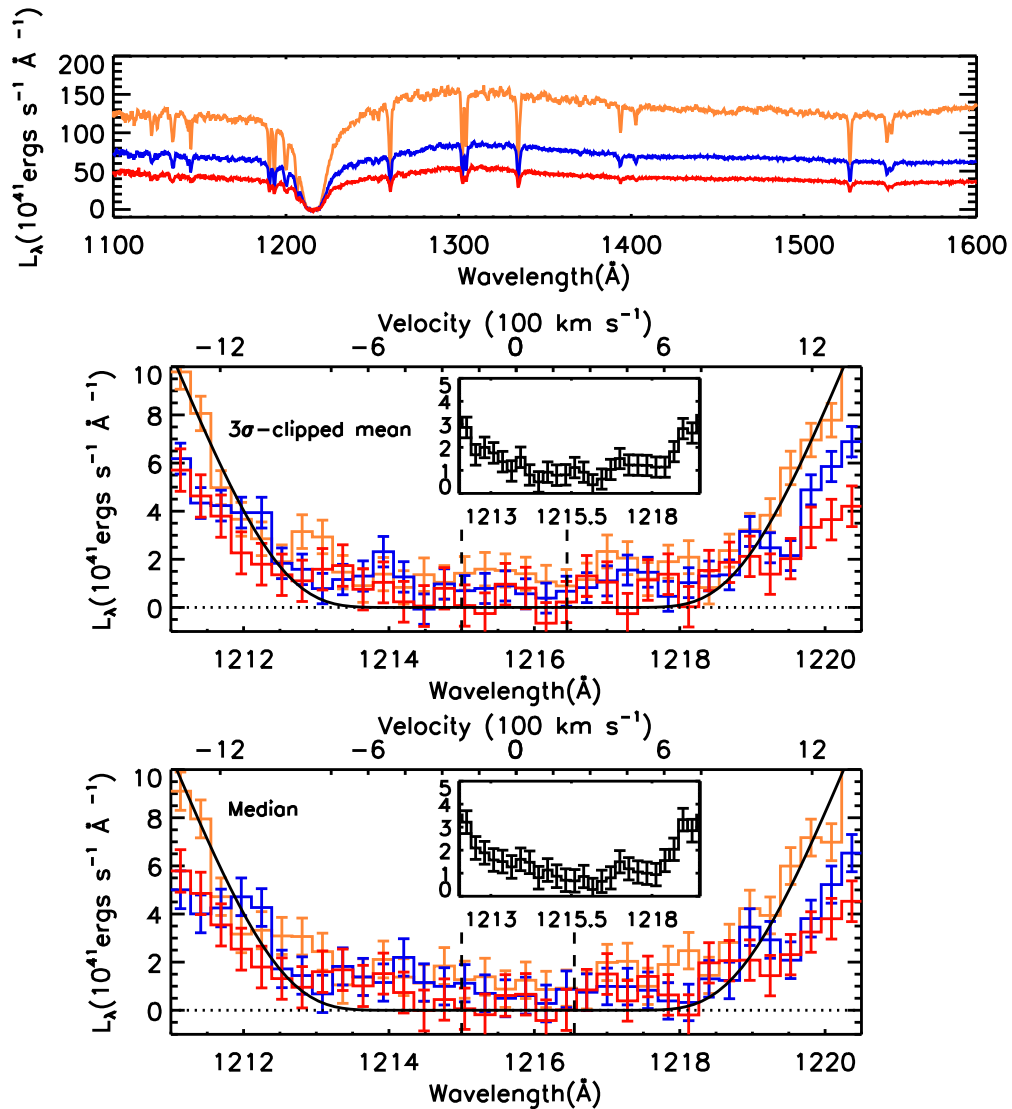


Figure 5. Upper panel shows the composite DLA ($N > 10^{20.9} \text{ cm}^{-2}$) spectra for three different luminosity bins of the CDLA sample for stronger DLA systems. The middle panel presents the 3σ -clipped mean of the expanded DLA dark core region after subtracting the sky-calibration residual, and the lowest panel shows the median value of the same dark trough region. In the middle and lower panels, the dark trough is defined between the two vertical dashed lines ($\pm 250 \text{ km s}^{-1}$ from the center, see Section 2.2). The insets in the middle and lower panel present the composite spectrum of the $N_{\text{col}} > 10^{20.9} \text{ cm}^{-2}$ CDLA sample, centered on the composite DLA absorption to show the non-detection of the Ly α emission from the DLA host galaxies. (A color version of this figure is available in the online journal.)

A sub-group of DLAs in the CDLA sample with multiple metal lines are shown in black, where the redshifts are obtained from the low ionization lines. The blue points represent DLAs in the CDLA sample with $N_{\text{H I}} > 10^{20.9} \text{ cm}^{-2}$. The comparison between $N_{\text{H I}} > 10^{20.6} \text{ cm}^{-2}$ and $N_{\text{H I}} > 10^{20.9} \text{ cm}^{-2}$ DLAs demonstrates that the dark core intensities are not correlated with the DLA column densities. We also compare DLAs in two bins of equivalent width, which are denoted by triangles in red and yellow in Figure 6. We find that the DLA dark core intensities do not correlate with the DLA metal line equivalent width. Figure 6 clearly suggests a $> 3\sigma$ detection of the correlation between the mean DLA dark core intensity and quasar luminosity. The histogram in the lower panel shows the distribution of the quasar luminosities for CDLA samples.

4. DISCUSSION

Using the CDLA sample of 1940 DLAs, we demonstrate that the dark trough intensity is significantly greater than the sky-

subtraction residual, and the intensity in the composite dark trough correlates with quasar luminosity. Further, the intensities of the dark trough do not correlate with DLA metal equivalent width or DLA column density. In this section, we will discuss two possible scenarios of the physical origin for the dark-trough intensity and its relation to the quasar luminosity.

4.1. DLA Galaxy Emission

More than hundreds of DLAs at $z > 2$ have been identified over the last 20 yr. However, only a handful of DLAs have been confirmed to have Ly α emission originated from the DLA host galaxies. Here, we first give a brief summary of such studies. Møller & Warren (1993) confirmed an Ly α emission line associated with a DLA with column density $N_{\text{col}} = 10^{21} \text{ cm}^{-2}$ at $z = 2.8$. The luminosity of Ly α emission is about $2 \times 10^{42} \text{ erg s}^{-1}$ ($\sim 0.4 \times L^*$ at $z = 3$; Ciardullo et al. 2012). The velocity offset of the Ly α emission is about $+50 \pm 100 \text{ km s}^{-1}$. Djorgovski et al. (1996) confirmed an

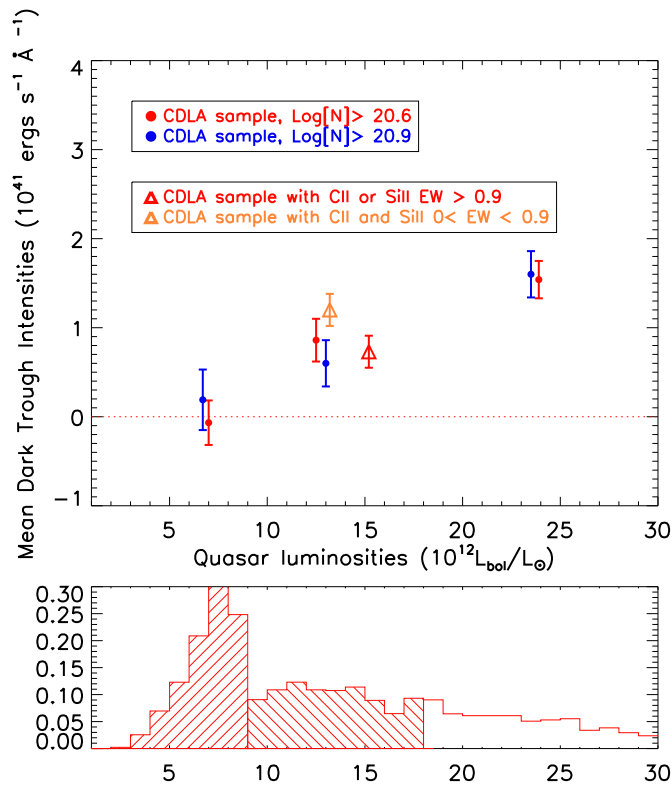


Figure 6. Summary of the relation between the quasar luminosities and the intensities in the stacked DLA trough of the CDLA sample. The comparison between DLAs with $N_{\text{H I}} > 10^{20.6}$ (red dots) and $N_{\text{H I}} > 10^{20.9}$ (blue dots) demonstrates that the dark core intensities are not correlated with the DLA column densities. The red and yellow triangles show that the DLA dark core intensities do not correlate with the DLA metal line equivalent width. There is a $\gtrsim 3\sigma$ detection of the correlation between the mean DLA dark core intensities and the quasar luminosities. The histogram in the lower panel shows the distribution of the quasar luminosities for CDLA samples in each of the three luminosity bins.

(A color version of this figure is available in the online journal.)

$\text{Ly}\alpha$ emission associated with a sub-DLA of column density $N_{\text{col}} = 10^{20.0} \text{ cm}^{-2}$ at $z = 3.1$. The luminosity of the $\text{Ly}\alpha$ emission is $5 \times 10^{42} \text{ erg s}^{-1}$ ($\sim L^*$), and the velocity offset is about $+200 \text{ km s}^{-1}$. Leibundgut & Robertson (1999) confirmed an $\text{Ly}\alpha$ emission from galaxy associated with a DLA with $N_{\text{col}} = 10^{20.85} \text{ cm}^{-2}$ at $z = 3.1$. The $\text{Ly}\alpha$ luminosity is about L^* , and the velocity offset is about 490 km s^{-1} . Møller et al. (2002) presented a gamma-ray burst DLA with a $\sim 0.5 L^*$ $\text{Ly}\alpha$ emission of DLA galaxy at $z = 2.3$, and the $\text{Ly}\alpha$ emission is redshifted by 530 km s^{-1} . Møller et al. (2004) detect a $\sim 0.5 L^*$ $\text{Ly}\alpha$ emission in the dark trough of a DLA with large column density $N_{\text{col}} \sim 10^{21.8} \text{ cm}^{-2}$ at $z = 2.0$. The velocity offset of this $\text{Ly}\alpha$ emission is about $+10 \pm 150 \text{ km s}^{-1}$. Kulkarni et al. (2012) presents a super-DLA with column density of $10^{22.0} \text{ cm}^{-2}$ associated with a L^* $\text{Ly}\alpha$ emission at $z = 2.2$. In the high S/N spectrum, the $\text{Ly}\alpha$ emission is consistent with a velocity offset of $+300 \text{ km s}^{-1}$. By stacking a sample of 99 DLAs with $N_{\text{H I}} > 10^{21.7} \text{ cm}^{-2}$, Noterdaeme et al. (2014) present the detection of an $\text{Ly}\alpha$ emission line with a luminosity of $0.65 \times 10^{42} \text{ erg s}^{-1}$ in the composite DLA trough, corresponding to $0.1 \times L^*$ galaxies at $z = 2-3$, and this composite $\text{Ly}\alpha$ emission has a velocity offset of 130 km s^{-1} .

After stacking the spectra using the DLAs in the CDLA sample, we did not detect $\text{Ly}\alpha$ emission in the dark trough

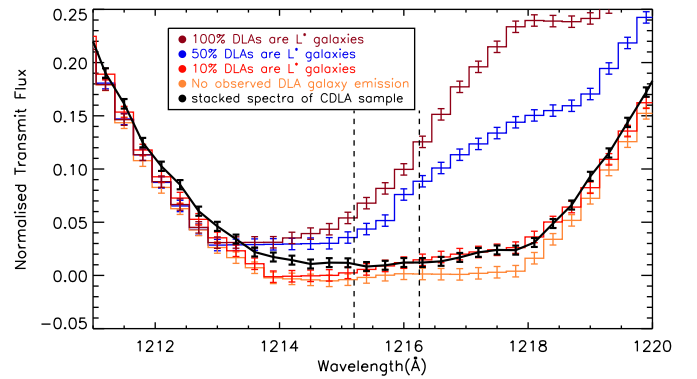


Figure 7. Composite spectra of the 2000 simulated DLAs with realistic galaxy $\text{Ly}\alpha$ emission added. The simulated DLAs are stacked using the 3σ -clipped mean. Simulated DLAs have same column density distribution as that of our CDLA sample. The noise has been included according to the realistic observed spectra. The $\text{Ly}\alpha$ emission of DLA host is assumed to have a similar luminosity, FWHM, and velocity offset to that of L^* LBGs at $z = 2-3$ (Shapley et al. 2003). The brown line shows the stacking of the simulated DLAs by assuming that 100% of DLA hosts have such strong $\text{Ly}\alpha$ emission entering the SDSS fibers. The blue (red) line assumes that 50% (10%) of the L^* $\text{Ly}\alpha$ emission enters the SDSS fibers for DLA host galaxies. The yellow line indicates that none of the emission from the DLA hosts contributes to the residual flux in the DLA dark trough, either because the emission from DLA host galaxies is below the detection limit, or because the impact parameter between the DLA cloud and $\text{Ly}\alpha$ emitting region is bigger than 10 kpc (see Section 4.1). The region between the two vertical dashed lines indicates the conservative dark trough we defined (same with Figure 4). From the region between 1214 Å and 1218 Å, one can see that the strong $\text{Ly}\alpha$ emission will significantly affect the trough profile of the stacked DLAs. With strong $\text{Ly}\alpha$ emission, the flux will increase with the wavelength, yet our observed flux (black line) does not. The observed results are generally consistent with the non-detection of strong $\text{Ly}\alpha$ emission from DLA galaxies. Also, this figure demonstrates that 3σ -clipped stacking does not clip away $\text{Ly}\alpha$ emission from DLA host galaxies.

(A color version of this figure is available in the online journal.)

of the composite spectra (e.g., see the insets in the middle and lower panels of Figures 4 and 5).

In Figure 7, we present the composite spectra of 2000 simulated DLAs with $\text{Ly}\alpha$ emission being added, and the stacking method is 3σ -clipped mean. The simulated DLAs have same column density distribution with that of our CDLA sample. The noise has been included according to the realistic BOSS spectra. The $\text{Ly}\alpha$ emission is assumed to have the same luminosity, FWHM (750 km s^{-1}), and velocity offset (445 km s^{-1}) with the composite spectrum of L^* Lyman break galaxies (LBGs) at $z = 2-3$ (Shapley et al. 2003). Brown line shows the 3σ -clipped mean of simulated DLAs by assuming that 100% DLA host galaxies have $\text{Ly}\alpha$ emission similar to that of L^* LBGs, and all the $\text{Ly}\alpha$ emission entered the SDSS fibers. The blue line assumes that 50% of the simulated DLA host galaxies have L^* $\text{Ly}\alpha$ emission. The red line assumes that 10% of the simulated DLA hosts have such strong $\text{Ly}\alpha$ emission. The yellow line indicates that the $\text{Ly}\alpha$ emission from the DLA hosts do not contribute to the residual flux in the DLA dark trough, either because the emission from DLA host galaxies is below the detection limit (see first probability in Section 4.1), or because the impact parameter between the DLA clouds and $\text{Ly}\alpha$ emitting region is bigger than 10 kpc (see third probability in Section 4.1). From the region between two vertical dashed lines, one can see that the strong $\text{Ly}\alpha$ emission will significantly affect the profile of the stacked DLA trough. In the region of the stacked dark trough, with the present of strong $\text{Ly}\alpha$ emission, the stacked flux will increase with the wavelength, yet our observed flux (black curve) does not. The observed results are generally consistent

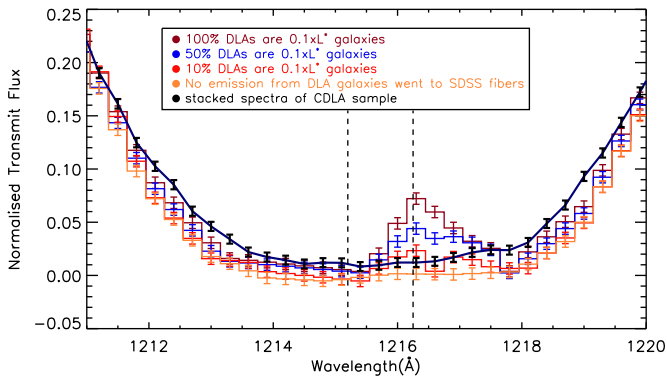


Figure 8. Similar plot to Figure 7. In this figure, the fainter Ly α emission of DLA host galaxies is assumed. We assume that the Ly α emission has a similar luminosity, FWHM, and velocity offset as that of $0.1 \times L^*$ star-forming galaxies at $z = 2-3$ (Noterdaeme et al. 2014). Brown presents the 3σ -clipped mean of simulated DLAs by assuming that 100% of the simulated DLA host galaxies have Ly α emission with a luminosity of $0.1 \times L^*$. The blue (red) line assumes that 50% (10%) of DLAs have $0.1 \times L^*$ Ly α emission. The yellow line indicates that the flux from the DLA hosts did not contribute to the residual flux in the DLA dark trough (see Section 4.1). From the observed spectra (black line), we did not detect the Ly α emission from DLA host galaxies. Our results are consistent with the following conclusions (Section 4.1): (1) DLA host galaxies are generally hosted by faint galaxies in relatively low-mass halos; and (2) for DLAs with column density of $N_{\text{col}} > 10^{20.6} \text{ cm}^{-2}$, the impact parameter between the DLA clouds and Ly α emitting regions generally may be larger than 10 kpc (see Section 4.1).

(A color version of this figure is available in the online journal.)

with the non-detection of the strong Ly α emission from DLA galaxies. Also, this figure demonstrates that 3σ -clipped stacking does not clip away Ly α emission from DLA host galaxies.

Figure 8 presents a similar plot to Figure 7. In this figure, we assume that the Ly α emission from DLA host galaxies have the same luminosity as $0.1 \times L^*$ star-forming galaxies at $z = 2-3$ (Noterdaeme et al. 2014). The luminosity, FWHM (300 km s^{-1}), and velocity offset (130 km s^{-1}) of the Ly α emission are followed by that described in Noterdaeme et al. (2014). Brown presents the 3σ -clipped mean of simulated DLAs by assuming that 100% of the simulated DLA host galaxies have Ly α emission with a luminosity of $0.1 L^*$, and all the Ly α emission entered the SDSS fibers. The blue (red) line assumes that 50% (10%) of the simulated DLA host galaxies have $0.1 \times L^*$ Ly α emission entering the fibers. The yellow line indicates that the flux from the DLA hosts did not contribute to the residual flux in the DLA dark trough (see Section 4.1). From the observed spectra (black line), we did not detect the Ly α emission from DLA host galaxies. Our results are consistent with the above discussions: (1) DLAs are generally hosted by faint galaxies in relatively low-mass halos; and (2) for column density of $N_{\text{col}} > 10^{20.6} \text{ cm}^{-2}$, most of the DLAs have their impact parameters between the DLA clouds and Ly α emitting regions larger than 10 kpc.

Figure 9 shows a similar plot to Figure 8. In this figure, we assume that the Ly α emission from DLA host galaxies have a typical stellar mass of $10^{8.5} M_{\odot}$ (Møller et al. 2013). Assuming that the DLA hosts follow the galaxy main sequence, the typical luminosity of DLA host galaxies should be about $0.03 \times L^*$ galaxies at $z = 2-3$. In this figure, we further assume that the DLA host galaxies have a luminosity of $0.03 \times L^*$. Brown presents the 3σ -clipped mean of simulated DLAs by assuming that 100% of the simulated DLA host galaxies have Ly α emission with a luminosity of $0.03 L^*$. The blue (red) line assumes that 50% (10%) of the simulated DLA host galaxies

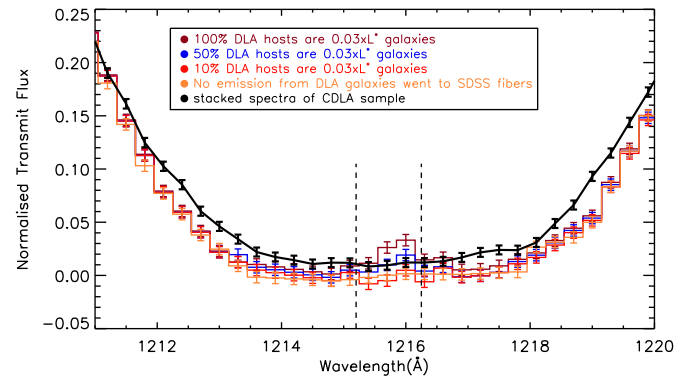


Figure 9. In this figure, we assume that the Ly α emission from DLA host galaxies have smaller stellar mass of $10^{8.5} M_{\odot}$ (Møller et al. 2013). Furthermore, if we assume that the DLA hosts follow the galaxy main sequence, the typical luminosity of DLA host galaxies should be about $0.03 \times L^*$ galaxies at $z = 2-3$. In this figure, we assume that the DLA host galaxies have a luminosity of $0.03 \times L^*$. Again, brown presents the 3σ -clipped mean of the simulated DLAs by assuming that 100% of the simulated DLA host galaxies have $0.03 L^*$ Ly α emission entering the SDSS fibers. The blue (red) line assumes that 50% (10%) of the simulated DLA host galaxies have Ly α emission with a luminosity of $0.03 L^*$. The yellow line indicates that the flux from the DLA hosts did not contribute to the residual flux in the DLA dark trough (see Section 4.1). From the figure, if only 10% of the DLA hosts have Ly α emission with a luminosity of $0.03 L^*$, the stacked Ly α emission is below our current detection limit. From the observed spectra (black), we did not detect the Ly α emission from DLA host galaxies.

(A color version of this figure is available in the online journal.)

have $0.03 \times L^*$ Ly α emission. The yellow line indicates that the flux from the DLA hosts did not contribute to the residual flux in the DLA dark trough. From the figure, if only 10% of the Ly α emission similar to $0.03 \times L^*$, the stacked Ly α emission will fall below our current detection limit. The black line shows that we did not detect the Ly α emission from DLA host galaxies, which is consistent with the red and yellow lines.

We estimate the 3σ upper limit ($F_{3\sigma}(\text{Ly}\alpha)$) by using the Gaussian fitting errors, assuming that the rest-frame FWHM of the expected Ly α emission is 400 km s^{-1} . The 3σ upper limit of the Ly α emission line flux is $F_{3\sigma}(\text{Ly}\alpha) = 7.5 \times 10^{-19} \text{ erg s}^{-1} \text{ cm}^{-2}$. Considering the $2''$ SDSS-III fiber diameter, this limit translates to a limiting 1σ surface brightness limit of $0.8 \times 10^{-19} \text{ erg s}^{-1} \text{ cm}^{-2} \text{ arcsec}^{-2}$. This depth is about a factor of two deeper than Rahmani et al. (2010) and comparable to the depth of the long-slit spectroscopic observations of Rauch et al. (2008). At the mean redshift ($\langle z \rangle = 2.6$), the 3σ limit on the Ly α emission corresponds to an Ly α luminosity of $4.0 \times 10^{40} \text{ erg s}^{-1}$. This upper limit on the Ly α luminosity reaches a depth of $\sim 0.01 L^*$, where $L^* \sim 4 \times 10^{42} \text{ erg s}^{-1}$ at $z = 3$ (Cassata et al. 2011; Ciardullo et al. 2012). This corresponds to a 3σ upper limit on the Ly α -based SFR ($\text{SFR}_{\text{Ly}\alpha}$) of $0.04 M_{\odot} \text{ yr}^{-1}$ (Kennicutt 1998; Dijkstra & Westra 2010).

The non-detection of the Ly α emission from the DLA galaxies in our CDLA sample can be explained by the following possibilities: (1) DLAs are mostly harbored by faint (sub- L^*) galaxies in relatively low-mass dark matter halos; (2) A large fraction of DLA clouds have impact parameters much larger than the stellar half light radius of the DLA host galaxy and exceed the $1''$ fiber radius, corresponding to $\sim 6 \text{ kpc}$ at $\langle z \rangle = 2.65$, such that a large number of the fibers are not exposed to the DLA galaxy stellar light; or (3) systemic offsets and redshift uncertainties of the Ly α emission lines in the DLA galaxies.

The first possibility is supported by an analysis of the mass-metallicity relation in a sample of 110 DLAs from

$z = 0.1\text{--}5.1$ conducted by Møller et al. (2013). They suggest that the typical DLA has a stellar mass of $\log(M_*/M_\odot) \sim 8.5$, in agreement with earlier results that most massive DLA galaxies only correspond to the least massive LBGs (Fynbo et al. 1999). Also, the low-mass DLA halos have been suggested by the simulations (e.g., Mo et al. 1999; Haehnelt et al. 2000; Nagamine et al. 2004). However, a few works favor more massive DLA dark matter halos on the order of $10^{12} h^{-1} M_\odot$ (e.g., Font-Ribera et al. 2012).

The second possibility is supported by several previous studies. The fibers may not be exposed to the DLA galaxy light due to the large impact parameter of the DLA clouds with respect to the center of the galaxy. Zwaan et al. (2005) present a comprehensive H I 21 cm absorption survey of nearby galaxies, which contains 40 H I absorption features with column densities $N_{\text{HI}} > 10^{20.0} \text{ cm}^{-2}$. Half of the DLAs were found to have an impact parameter $b > 8$ kpc from the center of the galaxy, indicating that the stellar emission from a large fraction of DLA-hosting galaxies would not enter the $2''$ BOSS fiber, if the DLAs at $z = 2\text{--}3$ have the same impact parameter as that of the nearby galaxies. Krogager et al. (2012) studied all of the 10 known DLAs with the identified galaxy counterparts at $z = 2\text{--}3$, and found that DLAs with impact parameter ranges from $0''.1$ to $3''.0$. Pontzen et al. (2008) are able to reproduce several properties of DLAs in their simulations, and the impact parameters at $z = 3$ are expected to be $b \lesssim 30$ kpc. Furthermore, Fynbo et al. (2008) supports that higher metallicity DLAs have larger disks. In our CDLA sample, we only selected DLAs with metal line detections, which biases our DLAs toward higher metallicity, which may have larger H I disks based on the simulations. It is true that diffuse halo Ly α emission (Steidel et al. 2011) may enter the fiber. However, the surface brightness of the diffuse Ly α halo emission significantly drops by a factor of >3 when the impact parameter is greater than 15 kpc.

The third possibility is also supported by numerous observations. Using a sample of 89 LBGs with $\langle z \rangle = 2.3 \pm 0.3$, Steidel et al. (2010) find that the Ly α lines have systemic velocity offsets of $\Delta v_{\text{Ly}\alpha} = 445 \pm 27 \text{ km s}^{-1}$. Assuming that the Ly α emission of DLA galaxy hosts has the same systemic velocity offsets as LBGs, the Ly α emission would be located outside of the dark trough of DLAs in our CDLA sample. The three possibilities we have discussed likely work together to cause the non-detection of DLA Ly α emission.

By stacking a sample of 99 DLAs with $N_{\text{HI}} > 10^{21.7} \text{ cm}^{-2}$, Noterdaeme et al. (2014) present the detection of an Ly α emission line with a luminosity of $0.65 \times 10^{42} \text{ erg s}^{-1}$ in the composite DLA trough, corresponding to $0.1 \times L^*$ galaxies at $z = 2\text{--}3$. The idea is that DLAs with large column densities are expected to have smaller galaxy impact parameters. This detection of Ly α emission from DLA galaxies does not contradict our result, because the very large DLAs with $N_{\text{HI}} > 10^{21.7} \text{ cm}^{-2}$ constitute only $\sim 2\%$ of our CDLA sample. On the contrary, this further supports the conclusion that most DLAs with $N_{\text{HI}} < 10^{21.7} \text{ cm}^{-2}$ are generally not associated with close galaxy counterparts. Our non-detection of Ly α emission supports the hypothesis that the lower column density DLAs could have larger impact parameters (up to a few tens of kiloparsecs); thus a large number of DLA absorbers in our sample are located >10 kpc from the central galaxies.

Besides the contribution of Ly α emission from DLA galaxies, the dark core flux may also be contributed by the DLA Lyman continua at $\lambda \sim 1216 \text{ \AA}$. However, if the dark core flux comes from the DLA Lyman continua, it is difficult to explain why the

dark core flux correlates with quasar luminosity. Therefore, our results favor the interpretation that the flux residual in the dark trough is highly unlikely to be contributed by Lyman continua or Ly α emission from DLAs.

4.2. The FUV Light from Quasar Host Galaxies

Theoretically, that the luminous quasar phase naturally coincides with intense star formation was been proposed early on, and has the natural interpretation that both processes rely on reservoirs of gas brought to the center by gas-rich mergers and disk instabilities (e.g., Sanders et al. 1988; Hopkins et al. 2006; Lutz et al. 2008). Several observational studies in the mid-infrared and submillimeter regime (e.g., Lutz et al. 2008; Serjeant & Hatziminaoglou 2009) confirmed that there exists a link between the quasar host SFR and the black hole accretion rate. Anglés-Alcázar et al. (2013) further propose that galaxy-scale torque-limited accretion (Hopkins & Quataert 2011) naturally and robustly yields black holes and galaxies evolving along the observed scaling relations, and that AGN feedback does not need to couple with galaxy-scale gas and regulate black hole growth. Therefore, FUV stellar light from the quasar hosts is the most plausible interpretation for the flux residual in the composite DLA dark trough.

It is possible that the DLA absorption, while blocking the quasar continuum region, only partially blocks the host galaxies. The SDSS fiber is exposed to the regions of the quasar host galaxy, which are not obscured by the intervening DLA and may contribute residual flux. This is consistent with models of clumpy H I distributions in DLA galaxies as suggested by recent observations (e.g., Kashikawa et al. 2014). Kanekar et al. (2009) used the Very Long Baseline Array to image 18 DLAs in redshifted H I 21 cm, and suggest that for quasar radio emission with source sizes $>100 \text{ pc}$, the median DLA H I covering factor for DLAs at $z = 1.5\text{--}3.5$ is $f_{\text{med}} \sim 0.6$. If the 21 cm and Ly α (UV) absorption do arise in the same cloud complexes, this result indicates that the emission from quasar hosts is not entirely covered by the foreground DLAs. Recent simulations and observations also support that in the galactic and circumgalactic environment, the covering factor of optically thick systems is $\lesssim 40\%\text{--}50\%$ for $\sim 0.1 L^*$ galaxies at $z = 2\text{--}3$ (Kanekar et al. 2009; Srianand et al. 2013). The half-light radius of quasar host galaxies at $z = 2\text{--}4$, typically $3\text{--}5$ kpc (Peng et al. 2006), is fully covered by the SDSS fiber (~ 12 kpc). The relation between the dark core residual flux and quasar luminosity supports a correlation between the SFR in the quasar hosts and the quasar luminosity.

After correcting for the sky-subtraction residual in the highest luminosity bins in the CDLA sample, the median intensity in the dark core is $\sim 16.4 \pm 2.1 \times 10^{40} \text{ erg s}^{-1} \text{ \AA}^{-1}$. We take this value as the average intensity of a quasar host galaxy at a rest-frame wavelength $\lambda \sim 1100 \text{ \AA}$. This value corresponds to an intensity of $\sim 7.5 \pm 1.0 \times 10^{40} \text{ erg s}^{-1} \text{ \AA}^{-1}$ at $\lambda \sim 1700 \text{ \AA}$ for a galaxy with a constant star formation history and an age of 0.5 Gyr, after correcting for intergalactic medium absorption (Bruzual & Charlot 2003; Schaye et al. 2003). At the mean redshift $\langle z \rangle = 3.1$, this corresponds to $0.3 L^*$, where L^* is determined from >2000 spectroscopic LBGs from $z = 1.9\text{--}3.4$ (Reddy et al. 2008). The inferred SFR based on the UV continua (SFR_{UV}) is $\sim 9 M_\odot \text{ yr}^{-1}$ (Madau et al. 1998). Following the same procedure, the middle-luminosity bin corresponds to SFR_{UV} = $5 M_\odot \text{ yr}^{-1}$, and the non-detection in the lowest luminosity bin translates to a 3σ upper limit of SFR_{UV} = $7.5 M_\odot \text{ yr}^{-1}$. If we assume that DLAs have a H I

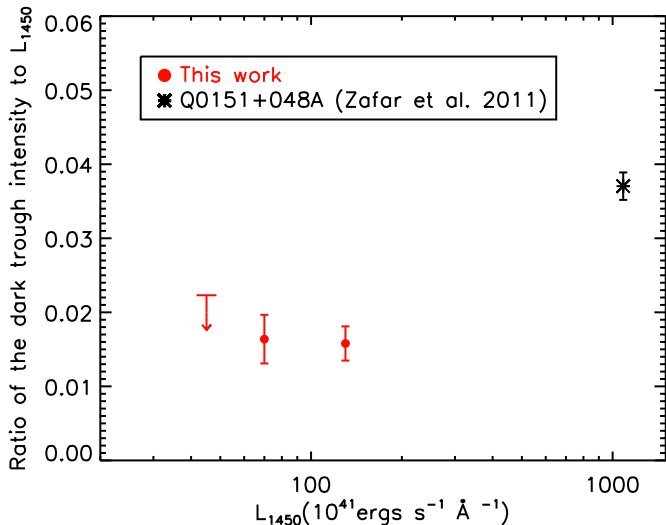


Figure 10. We compare our results (red dots with error bars) with the detection of Zafar et al. (2011; black dot with error bar). The plot shows the ratio of the dark trough residual intensity to the quasar luminosity density at rest-frame 1450 Å (L_{1450}). The dark trough intensity can be regarded as the unobscured FUV emission from the quasar host galaxies (see Section 4.2). After correcting the Ly α absorption due to IGM, the result in Zafar et al. (2011) is a factor of two times higher than our results. Note that Q0151+48A is one order of magnitude higher than BOSS quasars. Also, the detected residual flux for Q0151+48A is the Lyman continuum at $\lambda \sim 1216$ Å, while the residual flux for our BOSS quasar is the Lyman continuum at $\langle \lambda \rangle \sim 1100$ Å. The difference between our results and that of Zafar et al. (2011) can be interpreted well by the large scatter of the covering fraction among different DLA clouds, and plus the uncertainties of the dust extinction among different quasar hosts.

(A color version of this figure is available in the online journal.)

covering fraction of ~ 0.5 as discussed in the last paragraph, the SFR_{SUV} for each luminosity bin will be a factor of two times higher than our measured value. We further derive the bolometric luminosities (L_{bol}) for the three luminosity bins from the absolute magnitudes at 1450 Å, assuming a bolometric conversion factor $\zeta_{1450\text{Å}} = L_{\text{bol}}/vL_{\nu,1450\text{Å}} = 4.4$ (Richards et al. 2006). We obtain $L_{\text{bol}} = 25.0, 13.0, 7.0 \times 10^{12} L_{\odot}$, for our three quasar bins, respectively. The properties of these three subsamples are summarized in Table 1 based on our measurements.

Arextaga et al. (1998) report that the SFR of quasar host galaxies is $>100\text{--}200 M_{\odot} \text{ yr}^{-1}$ from a sample of three quasars at $z = 2$ using R and I band measurements. Jahnke et al. (2004) estimated an SFR $\sim 2\text{--}30 M_{\odot} \text{ yr}^{-1}$ for $z = 1.8\text{--}2.6$ quasar host galaxies using *HST* ACS F606W and F850LP bands. Villforth et al. (2008) found a moderate SFR of $\sim 33 M_{\odot} \text{ yr}^{-1}$ for quasar host galaxies using multi-band data from U to K . Our SFR_{SUV} values from partially obscured quasar hosts are generally consistent with these previous observations.

Using the long-slit spectroscopy, Zafar et al. (2011) reported the detection of the host galaxy in the dark trough of the DLA in front of quasar Q0151+048A at $z = 1.9$. The detected positive residual flux matches the reported brightness of the host galaxy well (Fynbo et al. 2000), and the measured counts in the dark trough is about a factor of 27 less than the quasar continuum in the B band. In Figure 10, we compare our results with the detection of Zafar et al. (2011). The Ly α mean optical depth at $z = 2.6$ ($\langle \tau \rangle (z = 2.6)$) is 0.3, and $\langle \tau \rangle (z = 1.9) = 0.1$. After correcting the mean Ly α absorption due to IGM, the result in Zafar et al. (2011) is a factor of two times higher than our results. Note that Q0151+48A is one order of magnitude higher than BOSS quasars. Also, the detected residual flux for Q0151+48A is the Lyman continuum at $\lambda \sim 1216$ Å, while the residual flux

for our BOSS quasar is the Lyman continuum at $\langle \lambda \rangle \sim 1100$ Å. Overall, the difference between our results and that of Zafar et al. (2011) can be interpreted well by the large scatter of the covering fraction among different DLA clouds, and plus the uncertainties of the dust extinction among different quasar hosts.

Extended scattered nuclear light from the surrounding nebula could also be considered as a source for the emission, in addition to light from star formation (Young et al. 2009). The signature of scattered nuclear light is suggested by a few polarimetric measurements (e.g., Smith et al. 2004; Letawe et al. 2007; Borguet et al. 2008). From Table 1 and Figures 4 and 5, the residual luminosity we detected is about 1.5% of quasar luminosity for the highest quasar luminosity bin. Observations of type 2 quasars suggest that scattering efficiencies can be at or above the 1% level (Zakamska et al. 2005). With the assumption that any broad Balmer line emission that is visible in the off-nuclear spectrum arises from scattered quasar light, Miller & Sheinis (2003) estimated the scattered light emission from four quasar host galaxies using Keck long-slit spectroscopy, and found that the fraction of the scattered nuclear light is generally small compared with the quasar host galaxies' stellar light (Miller & Sheinis 2003). However, Young et al. (2009) also report that based on their theoretical models, scattered light should be a concern for host characterization in high-redshift observations. From our current observations, any quantitative estimate of the quasar scattered light is difficult, and thus, extended scattered nuclear light remains a possibility for some of the residual flux. Thus the SFR_{SUV} we derived could be regarded as a stringent upper limit for the quasar host galaxies.

5. SUMMARY AND FUTURE PROSPECTS

We define a CDLA sample from quasars in SDSSIII-BOSS DR10 and stacked all of the spectra in three luminosity bins. In the composite spectra, we do not detect the Ly α emission coming from the DLA host galaxies. We find that the residual intensities in the DLA dark troughs correlate with the quasar luminosities (Figures 4 and 5). We further discussed possible scenarios for the origin of the residual intensity (see details Section 4), and conclude that it could be mainly contributed by FUV emission from the quasar host galaxies, rather than sky-subtraction residuals or DLA galaxy emission. For the highest luminosity bin with a median quasar bolometric luminosity of $2.5 \times 10^{13} L_{\odot}$, the median dark trough residual intensity is $= 16.4 \pm 2.1 \times 10^{40} \text{ erg s}^{-1} \text{ Å}^{-1}$, corresponding to a $0.3 L^*$ galaxy at $z \sim 3$ and an observed SFR_{SUV} of $\sim 9 M_{\odot} \text{ yr}^{-1}$. For the middle luminosity bin with a median quasar bolometric luminosity of $1.3 \times 10^{13} L_{\odot}$, the median residual intensity in the stacked dark trough is $= 8.8 \pm 2.3 \times 10^{40} \text{ erg s}^{-1} \text{ Å}^{-1}$, corresponding to a $0.2 L^*$ galaxy at $z \sim 3$ and an observed SFR_{SUV} of $\sim 5 M_{\odot} \text{ yr}^{-1}$. We do not detect the residual intensity in the stacked dark trough for the lowest bolometric luminosity. The median quasar bolometric luminosity for the lowest luminosity bin is $7.0 \times 10^{12} L_{\odot}$, and we put a 3σ upper limit on dark trough intensity of $7.5 \times 10^{40} \text{ erg s}^{-1} \text{ Å}^{-1}$, and a 3σ upper limit on SFR of $4.5 M_{\odot} \text{ yr}^{-1}$.

The more comprehensive study of the quasar host galaxies should combine the data from the rest-frame UV to rest-frame FIR. The SFR_{SUV} we derived may not represent a complete measure of the energy generated from high-redshift quasar hosts due to dust obscuration. Models suggest an evolutionary link between the optical quasar and local ULIRGs (submillimeter galaxies (SMGs) at high redshift; e.g., Sanders et al. 1988), where quasars are proposed to emerge from SMGs. Thus,

it is possible that quasar host galaxies may still be heavily enshrouded by dust, and that a considerable amount of the UV emission from star formation is dust obscured. FIR emission should provide a more comprehensive measure of the total SFR in dusty circumnuclear starbursts, and a direct comparison between SFR_{UV} and SFR_{FIR} provides an estimate for the dust obscuration in the quasar host galaxies.

However, quasars at $z = 2\text{--}5$ with similar bolometric luminosities to BOSS quasars have not been observed in the rest-frame FIR. With ALMA, one can probe a carefully selected sample of BOSS quasars at $z \sim 2\text{--}3$ with reasonable exposure times. The previous studies have determined a relation between the bolometric luminosities (L_{bol}) and rest-frame FIR luminosity (L_{FIR}), using quasars at higher redshifts ($z \gtrsim 5$) and quasars at $z = 2\text{--}4$ but with much higher bolometric luminosities than BOSS quasars (Wang et al. 2011; Omont et al. 2003, 2001; Carilli et al. 2001; Priddey et al. 2003). Assuming this relation between L_{bol} and L_{FIR} can be applied to quasars with similar luminosity to our sample at $z = 2\text{--}3$, we can predict that for our highest luminosity bins, the L_{bol} -inferred L_{FIR} is $\sim 10^{12.4} L_{\odot}$. Using FIR/submillimeter spectral energy distributions, previous studies suggest that a significant fraction of the rest-frame FIR emission comes from massive star formation, possibly indicating the formation of early galactic bulges (Leipski et al. 2012, 2014). Several studies also simply suggest that 50% of the FIR emission is powered by the star formation (e.g., Bechtold et al. 2003; Wang et al. 2008, 2011). If we also assume that 50% of the L_{bol} -inferred $L_{\text{FIR}} \sim 10^{12.4} L_{\odot}$ is powered by star formation, the median FIR-derived SFR (SFR_{FIR}) for our highest quasar luminosity bin should be $\sim 300 M_{\odot} \text{ yr}^{-1}$. This expected SFR_{FIR} is already more than one order of magnitude higher than the SFR_{UV} we derived.

Future detailed studies from rest-frame IR to submillimeter will constrain better dust heating models of host galaxies for BOSS quasars. The next generation of spaced-based and ground-based telescope AO will provide significantly higher spatial resolution and enable much more precise PSF subtraction, and make it possible to fully resolve and accurately measure the UV emission from quasar hosts at $z \gtrsim 2$. A direct comparison between the observed SFR_{FIR} and SFR_{UV} will directly probe the dust obscuration in the quasar host galaxies, and can be used to compare with the quasar evolutionary models.

We thank the anonymous referee for insightful comments which have significantly improved the paper. Z.C. thanks George Becker and J. Xavier Prochaska for useful discussions. Z.C. and X.F. acknowledge support from NSF grants AST 08-06861 and AST 11-07682. Funding for SDSS-III has been provided by the Alfred P. Sloan Foundation, the Participating Institutions, the National Science Foundation, and the U.S. Department of Energy Office of Science. The SDSS-III web site is <http://www.sdss3.org/>. SDSS-III is managed by the Astrophysical Research Consortium for the Participating Institutions of the SDSS-III Collaboration including the University of Arizona, the Brazilian Participation Group, Brookhaven National Laboratory, University of Cambridge, Carnegie Mellon University, University of Florida, the French Participation Group, the German Participation Group, Harvard University, the Instituto de Astrofísica de Canarias, the Michigan State/Notre Dame/JINA Participation Group, Johns Hopkins University, Lawrence Berkeley National Laboratory, Max Planck Institute for Astrophysics, Max Planck Institute for Extraterrestrial Physics, New Mexico State University, New York University,

Ohio State University, Pennsylvania State University, University of Portsmouth, Princeton University, the Spanish Participation Group, University of Tokyo, University of Utah, Vanderbilt University, University of Virginia, University of Washington, and Yale University.

REFERENCES

- Ahn, C. P., Alexandroff, R., Allende Prieto, C., et al. 2014, *ApJS*, 211, 17
 Anglés-Alcázar, D., Özel, F., & Davé, R. 2013, *ApJ*, 770, 5
 Aretxaga, I., Terlevich, R. J., & Boyle, B. J. 1998, *MNRAS*, 296, 643
 Bechtold, J., Siemiginowska, A., Shields, J., et al. 2003, *ApJ*, 588, 119
 Bian, F., Fan, X., Jiang, L., et al. 2012, *ApJ*, 757, 139
 Bolton, A. S., Schlegel, D. J., Aubourg, É., et al. 2012, *AJ*, 144, 144
 Borguet, B., Hutsemékers, D., Letawe, G., Letawe, Y., & Magain, P. 2008, *A&A*, 478, 321
 Borthakur, S., Tripp, T. M., Yun, M. S., et al. 2011, *ApJ*, 727, 52
 Bovy, J., Hennawi, J. F., Hogg, D. W., et al. 2011, *ApJ*, 729, 141
 Braun, R., & Walterbos, R. A. M. 1992, *ApJ*, 386, 120
 Bridge, C. R., Teplitz, H. I., Siana, B., et al. 2010, *ApJ*, 720, 465
 Bruzual, G., & Charlot, S. 2003, *MNRAS*, 344, 1000
 Carilli, C. L., Bertoldi, F., Omont, A., et al. 2001, *AJ*, 122, 1679
 Carilli, C. L., & Wang, R. 2006, *AJ*, 132, 2231
 Cassata, P., Le Fèvre, O., Garilli, B., et al. 2011, *A&A*, 525, A143
 Ciardullo, R., Gronwall, C., Wolf, C., et al. 2012, *ApJ*, 744, 110
 Dawson, K. S., Schlegel, D. J., Ahn, C. P., et al. 2013, *AJ*, 145, 10
 Dijkstra, M., & Westra, E. 2010, *MNRAS*, 401, 2343
 Djorgovski, S. G., Pahre, M. A., Bechtold, J., & Elston, R. 1996, *Natur*, 382, 234
 Eisenstein, D. J., Weinberg, D. H., Agol, E., et al. 2011, *AJ*, 142, 72
 Ferrarese, L., & Merritt, D. 2000, *ApJL*, 539, L9
 Finley, H., Petitjean, P., Pâris, I., et al. 2013, *A&A*, 558, 111
 Font-Ribera, A., Miralda-Escudé, J., Arnau, E., et al. 2012, *JCAP*, 11, 059
 Fynbo, J. P. U., Prochaska, J. X., Sommer-Larsen, J., Dessauges-Zavadsky, M., & Møller, P. 2008, *ApJ*, 683, 321
 Fynbo, J. U., Møller, P., & Warren, S. J. 1999, *MNRAS*, 305, 849
 Fynbo, J. U., Thomsen, B., & Møller, P. 2000, *A&A*, 353, 457
 Gebhardt, K., Bender, R., Bower, G., et al. 2000, *ApJL*, 539, L13
 Guyon, O., Sanders, D. B., & Stockton, A. 2006, *ApJS*, 166, 89
 Haehnelt, M. G., Steinmetz, M., & Rauch, M. 2000, *ApJ*, 534, 594
 Häring, N., & Rix, H.-W. 2004, *ApJL*, 604, L89
 Hennawi, J. F., Prochaska, J. X., Kollmeier, J., & Zheng, Z. 2009, *ApJL*, 693, L49
 Hopkins, P. F., & Quataert, E. 2011, *MNRAS*, 415, 1027
 Hopkins, P. F., Somerville, R. S., Hernquist, L., et al. 2006, *ApJ*, 652, 864
 Hutchings, J. B., Frenette, D., Hanisch, R., et al. 2002, *AJ*, 123, 2936
 Jahnke, K., Sánchez, S. F., Wisotzki, L., et al. 2004, *ApJ*, 614, 568
 Kanekar, N., Lane, W. M., Momjian, E., Briggs, F. H., & Chengalur, J. N. 2009, *MNRAS*, 394, L61
 Kashikawa, N., Misawa, T., Minowa, Y., et al. 2014, *ApJ*, 780, 116
 Kennicutt, R. C., Jr. 1998, *ApJ*, 498, 541
 Komatsu, E., Dunkley, J., Nolta, M. R., et al. 2009, *ApJS*, 180, 330
 Krogager, J.-K., Fynbo, J. P. U., Møller, P., et al. 2012, *MNRAS*, 424, L1
 Kulkula, M. J., Dunlop, J. S., McLure, R. J., et al. 2001, *MNRAS*, 326, 1533
 Kulkarni, V. P., Meiring, J., Som, D., et al. 2012, *ApJ*, 749, 176
 Lee, K.-G., Suzuki, N., & Spergel, D. N. 2012, *AJ*, 143, 51
 Leibundgut, B., & Robertson, J. G. 1999, *MNRAS*, 303, 711
 Leipski, C., Gallo, E., Treu, T., et al. 2012, *ApJ*, 744, 152
 Leipski, C., Meisenheimer, K., Walter, F., et al. 2014, *ApJ*, 785, 154
 Letawe, G., Magain, P., Courbin, F., et al. 2007, *MNRAS*, 378, 83
 Lutj, D., Sturm, E., Tacconi, L. J., et al. 2008, *ApJ*, 684, 853
 Madau, P., Pozzetti, L., & Dickinson, M. 1998, *ApJ*, 498, 106
 Magorrian, J., Tremaine, S., Richstone, D., et al. 1998, *AJ*, 115, 2285
 Malkan, M., Webb, W., & Konopacky, Q. 2003, *ApJ*, 598, 878
 Marconi, A., & Hunt, L. K. 2003, *ApJL*, 589, L21
 Martel, A. R., Ford, H. C., Tran, H. D., et al. 2003, *AJ*, 125, 2964
 McLure, R. J., Kulkula, M. J., Dunlop, J. S., et al. 1999, *MNRAS*, 308, 377
 Mechtley, M., Windhorst, R. A., Ryan, R. E., et al. 2012, *ApJL*, 756, L38
 Miller, J. S., & Sheinis, A. I. 2003, *ApJL*, 588, L9
 Mo, H. J., Mao, S., & White, S. D. M. 1999, *MNRAS*, 304, 175
 Møller, P., Fynbo, J. P. U., & Fall, S. M. 2004, *A&A*, 422, L33
 Møller, P., Fynbo, J. P. U., Ledoux, C., & Nilsson, K. K. 2013, *MNRAS*, 430, 2680
 Møller, P., & Warren, S. J. 1993, *A&A*, 270, 43
 Møller, P., Warren, S. J., Fall, S. M., Fynbo, J. U., & Jakobsen, P. 2002, *ApJ*, 574, 51

- Nagamine, K., Springel, V., & Hernquist, L. 2004, *MNRAS*, **348**, 435
- Noterdaeme, P., Petitjean, P., Carithers, W. C., et al. 2012, *A&A*, **547**, L1
- Noterdaeme, P., Petitjean, P., Ledoux, C., & Srianand, R. 2009, *A&A*, **505**, 1087
- Noterdaeme, P., Petitjean, P., Pâris, I., et al. 2014, *A&A*, **566**, A24
- Omont, A., Beelen, A., Bertoldi, F., et al. 2003, *A&A*, **398**, 857
- Omont, A., Cox, P., Bertoldi, F., et al. 2001, *A&A*, **374**, 371
- Pâris, I., Petitjean, P., Aubourg, É., et al. 2012, *A&A*, **548**, A66
- Pâris, I., Petitjean, P., Aubourg, É., et al. 2014, *A&A*, **563**, 54
- Peng, C. Y., Impey, C. D., Rix, H.-W., et al. 2006, *ApJ*, **649**, 616
- Pontzen, A., Governato, F., Pettini, M., et al. 2008, *MNRAS*, **390**, 1349
- Priddey, R. S., Isaak, K. G., McMahon, R. G., & Omont, A. 2003, *MNRAS*, **339**, 1183
- Rahmani, H., Srianand, R., Noterdaeme, P., & Petitjean, P. 2010, *MNRAS*, **409**, L59
- Rauch, M., Haehnelt, M., Bunker, A., et al. 2008, *ApJ*, **681**, 856
- Reddy, N. A., Steidel, C. C., Pettini, M., et al. 2008, *ApJS*, **175**, 48
- Richards, G. T., Lacy, M., Storrie-Lombardi, L. J., et al. 2006, *ApJS*, **166**, 470
- Ridgway, S. E., Heckman, T. M., Calzetti, D., & Lehnert, M. 2001, *ApJ*, **550**, 122
- Ross, N. P., Myers, A. D., Sheldon, E. S., et al. 2012, *ApJS*, **199**, 3
- Sanders, D. B., Scoville, N. Z., & Soifer, B. T. 1988, *ApJL*, **335**, L1
- Schaye, J., Aguirre, A., Kim, T.-S., et al. 2003, *ApJ*, **596**, 768
- Schramm, M., Wisotzki, L., & Jahnke, K. 2008, *A&A*, **478**, 311
- Serjeant, S., & Hatziminaoglou, E. 2009, *MNRAS*, **397**, 265
- Shapley, A. E., Steidel, C. C., Erb, D. K., et al. 2005, *ApJ*, **626**, 698
- Shapley, A. E., Steidel, C. C., Pettini, M., & Adelberger, K. L. 2003, *ApJ*, **588**, 65
- Siana, B., Teplitz, H. I., Colbert, J., et al. 2007, *ApJ*, **668**, 62
- Smith, J. E., Robinson, A., Alexander, D. M., et al. 2004, *MNRAS*, **350**, 140
- Srianand, R., Gupta, N., Rahmani, H., et al. 2013, *MNRAS*, **428**, 2198
- Steidel, C. C., Bogosavljević, M., Shapley, A. E., et al. 2011, *ApJ*, **736**, 160
- Steidel, C. C., Erb, D. K., Shapley, A. E., et al. 2010, *ApJ*, **717**, 289
- Targett, T. A., Dunlop, J. S., Cirasuolo, M., et al. 2013, *MNRAS*, **432**, 2012
- Villforth, C., Heidt, J., & Nilsson, K. 2008, *A&A*, **488**, 133
- Wang, R., Carilli, C. L., Wagg, J., et al. 2008, *ApJ*, **687**, 848
- Wang, R., Wagg, J., Carilli, C. L., et al. 2011, *AJ*, **142**, 101
- Wang, R., Wagg, J., Carilli, C. L., et al. 2013, *ApJ*, **773**, 44
- Young, J. E., Eracleous, M., Shemmer, O., et al. 2014, *MNRAS*, **438**, 217
- Young, S., Axon, D. J., Robinson, A., & Capetti, A. 2009, *ApJL*, **698**, L121
- Yun, M. S., Carilli, C. L., Kawabe, R., et al. 2000, *ApJ*, **528**, 171
- Zafar, T., Møller, P., Ledoux, C., et al. 2011, *A&A*, **532**, A51
- Zakamska, N. L., Schmidt, G. D., Smith, P. S., et al. 2005, *AJ*, **129**, 1212
- Zwaan, M. A., van der Hulst, J. M., Briggs, F. H., Verheijen, M. A. W., & Ryan-Weber, E. V. 2005, *MNRAS*, **364**, 1467