



Open Research Online

The Open University's repository of research publications and other research outputs

Deleterious effects of calcium indicators within cells; an inconvenient truth

Journal Item

How to cite:

Bootman, Martin D.; Allman, Sarah; Rietdorf, Katja and Bultynck, Geert (2018). Deleterious effects of calcium indicators within cells; an inconvenient truth. *Cell Calcium*, 73 pp. 82–87.

For guidance on citations see [FAQs](#).

© 2018 Elsevier Ltd.

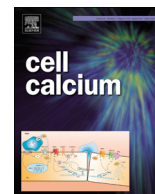
Version: Version of Record

Link(s) to article on publisher's website:

<http://dx.doi.org/doi:10.1016/j.ceca.2018.04.005>

Copyright and Moral Rights for the articles on this site are retained by the individual authors and/or other copyright owners. For more information on Open Research Online's data [policy](#) on reuse of materials please consult the policies page.

oro.open.ac.uk



Deleterious effects of calcium indicators within cells; an inconvenient truth

Martin D. Bootman^{a,*}, Sarah Allman^a, Katja Rietdorf^a, Geert Bultynck^b

^a School of Life, Health and Chemical Sciences, Faculty of Science, Technology, Engineering and Mathematics, The Open University, Walton Hall, Milton Keynes, MK7 6AA, United Kingdom

^b KU Leuven, Laboratory of Molecular and Cellular Signaling, Department Cellular and Molecular Medicine, Campus Gasthuisberg O/N-1 bus 802, Herestraat 49, BE-3000, Leuven, Belgium

ARTICLE INFO

Keywords:

Calcium
Indicator
GECI
BAPTA
ATPase
Signaling

ABSTRACT

The study of cellular Ca^{2+} signalling is indebted to Roger Tsien for the invention of fluorescent indicators that can be readily loaded into living cells and provide the means to measure cellular Ca^{2+} changes over long periods of time with sub-second resolution and microscopic precision. However, a recent study [1] reminds us that as useful as these tools are they need to be employed with caution as there can be off-target effects. This article summarises these recent findings within the wider context of confounding issues that can be encountered when using chemical and genetically-encoded Ca^{2+} indicators, and briefly discusses some approaches that may mitigate against misleading outcomes.

Tsien and colleagues invented numerous fluorescent indicators that are used to monitor cellular Ca^{2+} [2,3]. The fluorescent indicators vary in properties such as affinity, excitation and emission wavelengths, cellular location, and whether they have single wavelength maxima for excitation/emission, or can be used in a ratiometric manner [4]. These chemical Ca^{2+} indicators (as they are sometimes called; hereafter referred to as ‘ Ca^{2+} indicators’) are based on BAPTA, an aminopolycarboxylic acid (Fig. 1). Being charged molecules, Ca^{2+} indicators are hydrophilic and therefore cell impermeant. Tsien showed that esterification of the carboxyl groups conferred lipophilicity, allowing the Ca^{2+} indicators to cross cell membranes [5]. Once inside cells, the esters are hydrolysed, and the free acid, Ca^{2+} -binding molecule is released. Depending on the loading conditions used, the intracellular accumulation of Ca^{2+} indicators can plausibly span from micromolar to millimolar concentrations. Where loading of esterified Ca^{2+} indicators is sub-optimal, the free acid forms can be introduced into cells using techniques such as microinjection or via patch pipettes.

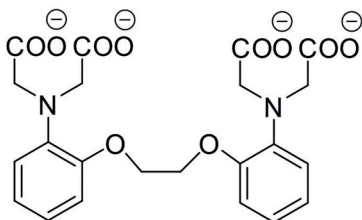
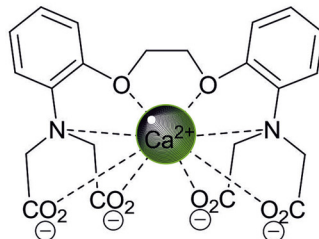
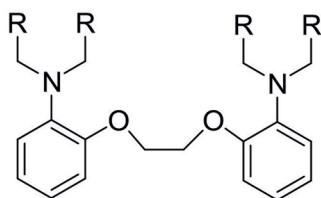
The ease with which Ca^{2+} indicators can be loaded and monitored has led to their use in thousands of studies that have characterised the spatial and temporal properties of Ca^{2+} signals in various cell types. Chemical Ca^{2+} indicators are ideal in many ways; they have rapid Ca^{2+} -binding kinetics, are brightly fluorescent, and are functional within cells for long periods of time [6]. Moreover, the output from these Ca^{2+} indicators can usually be readily calibrated into Ca^{2+} concentration [7]. BAPTA is commonly used to test, or negate, the involvement of Ca^{2+} in cellular processes, and is often loaded to large excess to provide stringent buffering of Ca^{2+} concentration. Whilst

Ca^{2+} indicators and BAPTA are critical tools for dissecting cellular responses, relatively few studies have included controls for their potential off-target effects.

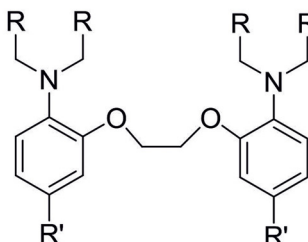
A recent study from Maiken Nedergaard’s lab [1] highlighted an interaction of Ca^{2+} indicators and BAPTA with the Na^+/K^+ -ATPase, a ubiquitous cellular enzyme, with consequent deleterious effects on metabolism, signalling and cell survival. Specifically, Smith et al. [1] observed that commonly used Ca^{2+} indicators (Fluo-4, Rhod-2 and Fura-2), as well as BAPTA, inhibited the Na^+/K^+ -ATPase in several primary cell types independent of Ca^{2+} binding. They found that the Ca^{2+} indicators and BAPTA altered K^+ homeostasis and caused ATP release within the cortex of living animals, as well as reducing spontaneous Ca^{2+} signals within primary astrocytes. An additional effect of Fluo-4, Fura-2 and BAPTA was to decrease the cellular uptake of glucose. Given the critical role of the Na^+/K^+ -ATPase in establishing Na^+ and K^+ gradients (which are critical for the membrane potential, secondary active transport, ionic transport and cell volume regulation), it is not surprising that inhibition of this enzyme would influence many downstream processes. For example, the Na^+/K^+ -ATPase is the primary mechanism for extracellular K^+ buffering in the brain; the archetypal function of astrocytes, and critical for overall regulation of the excitability of the central nervous system [8]. Moreover, the Na^+/K^+ -ATPase can function within cellular microdomains that include other transporters and signalling moieties including Src kinase, phospholipase C- γ and inositol 1,4,5-trisphosphate (IP_3) receptors [9]. Long-term inhibition of the Na^+/K^+ -ATPase leads to altered gene transcription [10] and prevents autophagic cell death (autosis) [11]. Rhod-2

* Corresponding author.

E-mail address: martin.bootman@open.ac.uk (M.D. Bootman).

A BAPTA**B BAPTA with Ca²⁺ bound****C BAPTA-AM**

where **R** = $-\text{COOCH}_2\text{OCOCH}_3$

D Di-fluoro or di-bromo BAPTA-AM

where **R** = $-\text{COOCH}_2\text{OCOCH}_3$
where **R'** = Br or F

Fig. 1. Chemical structure of BAPTA and analogues, and complexation of Ca^{2+} . Panel A, BAPTA free acid (deprotonated). Panel B, stylised representation of the Ca^{2+} :BAPTA complex showing binding by the carboxyl groups, with participation also from the ester oxygen and nitrogen atoms. Panel C, BAPTA-AM ester form. Panel D, Difluoro- or dibromo-BAPTA-AM analogues.

appeared to have a further negative effect on mitochondrial ATP production since it stimulated glucose uptake and glycolysis to compensate for reduced respiration. Although some labs use Rhod-2 to monitor cytosolic Ca^{2+} , due to its delocalised positive charge Rhod-2 accumulates within the mitochondrial matrix and has been used extensively to monitor mitochondrial Ca^{2+} sequestration [12]. Further work is needed to establish how Rhod-2 alters mitochondrial function, but other rhodamine-based compounds have been shown to affect the electron transfer and the F_1F_0 -ATPase [13], and the adenine nucleotide translocase [14].

A number of studies have noted that Ca^{2+} indicators and BAPTA have Ca^{2+} -independent off-target actions and may not be freely

diffusible within cells (Fig. 2 and Table 1) [15]. Although more work is needed to understand how these compounds affect cellular targets, a direct interaction is plausible since they are known to bind to cellular proteins [16,17]. In fact, it has been estimated that the majority of Fura-2 molecules within a cell may be bound by cytosolic proteins, even if the Ca^{2+} indicator is injected as the free acid [17]. Within muscle cells, typically > 80% of Ca^{2+} indicator molecules are bound to cellular components [18], leading to changes in the indicator's fluorescence properties [19,20]. Non-specific binding of Fura-2 to proteins is enhanced in environments with an acidic pH [21].

Smith et al. [1] observed that the inhibition of Na^+/K^+ -ATPase by Ca^{2+} indicators and BAPTA was retained in cell membrane

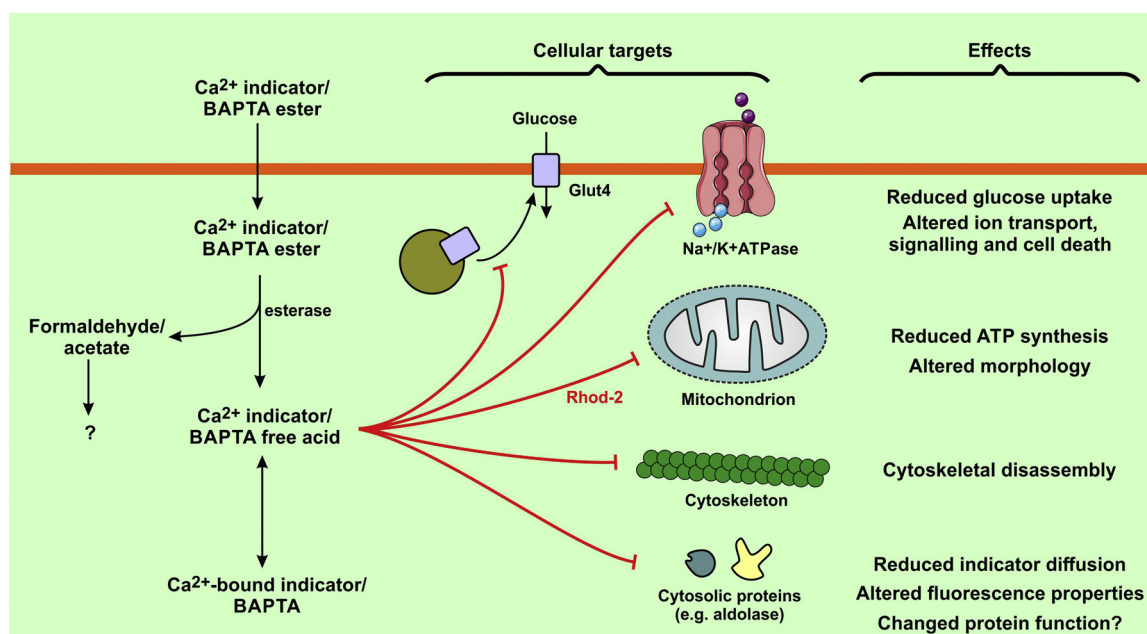


Fig. 2. Reported cellular interactions of BAPTA and/or Ca^{2+} indicators. The figure does not show an exhaustive list of the off-target effects of BAPTA/ Ca^{2+} indicators, but points out some of the key interactions reported by Smith et al. (1), as well as other reported outcomes.

Table 1

Ca²⁺-independent cellular actions of BAPTA. The effects of BAPTA, and its analogues, were considered Ca²⁺-independent via a variety of experimental analyses, such as similar cellular responses being observed when using low-affinity or non-Ca²⁺-binding BAPTA analogues, or keeping free Ca²⁺ concentration the same but changing BAPTA concentration and having an altered cellular response (i.e. the response was dependent on [BAPTA], but not [Ca²⁺]).

Reagent	Cell type	Working concentration	Effect	Reference
BAPTA-AM	Rat parotid cells	100 μM	Reduced cellular ATP levels	[26]
BAPTA-AM	3T3-L1 adipocytes	50 μM	Reduced insulin-stimulated translocation of GLUT4	[27]
BAPTA-AM	A6 (<i>Xenopus</i>), RAT2 cells	50 μM	Cytoskeletal disassembly Reduced cellular ATP levels	[28]
BAPTA	Murine brown adipocytes	1–2 mM	Changes in mitochondrial morphology and distribution Ca ²⁺ -independent effects on Cl ⁻ channel currents	[29]
BAPTA-AM	3T3-L1 adipocytes	12.5–50 μM	Decrease tubulin polymerisation	[30]
BAPTA and di-bromo BAPTA	<i>Drosophila</i> photoreceptors	~1–10 mM (IC ₅₀ for BAPTA ~1 mM)	Inhibition of phospholipase C	[31]
BAPTA-AM, di-fluoro BAPTA-AM, and di-bromo BAPTA-AM	Endothelial cells	0.5–50 μM	Enhanced prostacyclin release. Concentration- and time-dependent effect of BAPTA; both activation and inhibition were observed.	[32]
BAPTA-AM	HEK293 cells	0.1–50 μM (IC ₅₀ ~1 μM)	Inhibition of heterologously-expressed K ⁺ channels	[33]
BAPTA-AM	Liver macrophages	10 μM	Inactivation of protein kinase C	[34]
BAPTA	Permeabilised hepatocytes	1 μM–10 mM (K _d = 1.8 mM)	Inhibition of inositol 1,4,5-trisphosphate-induced Ca ²⁺ release	[35]

preparations that had been incubated in a lysis buffer for several hours. Under such conditions any freely diffusible molecules would have been lost from the cells. Whilst these data suggest a long-lasting interaction, it is unclear whether the Na⁺/K⁺-ATPase is directly targeted by Ca²⁺ indicators and BAPTA, or if their effects are mediated by accessory factors. Ouabain, a naturally occurring inhibitor of the Na⁺/K⁺-ATPase, binds to the enzyme at an extracellular site with nanomolar affinity [22], although other binding sites have been proposed [23]. It remains to be shown if, and where, BAPTA and Ca²⁺ indicators bind to the Na⁺/K⁺-ATPase. Because BAPTA and Ca²⁺ indicators inhibit the Na⁺/K⁺-ATPase when loaded into cells it is likely that they access the enzyme from its cytosolic aspect. Given the resemblance of the Na⁺/K⁺-ATPase to the sarco/endoplasmic reticulum Ca²⁺-ATPase (SERCA), responsible for Ca²⁺ uptake into organelles, it is possible that other P-type ATPases may be affected by Ca²⁺ indicators and BAPTA [22,24].

There is insufficient evidence to draw robust conclusions relating to the structure-activity profile of either BAPTA or chemical Ca²⁺ indicators. The required libraries of structurally diverse analogues have not been systematically tested against these recently identified targets, and it is therefore difficult to make assumptions as to the parts of the molecular framework responsible for their interactions with proteins. The structure of BAPTA (the parent compound) is shown in Fig. 1 as the free acid, the AM ester form and, in a complex with Ca²⁺. BAPTA can be a planar molecule, but it can also rotate around the ether bonds that link its two halves, thereby permitting a degree of flexibility that may allow it to adopt conformations that facilitate its interaction with proteins. The off-target effects of BAPTA are commonly reported to be independent of the Ca²⁺-binding carboxyl groups, which may indicate other parts of the molecule are involved. For example, analogues of BAPTA stimulated the production of prostacyclin with an inverse relationship to their affinity for Ca²⁺ [25]. However, altering the length of the ether chain linking the aromatic groups, substitution of nitrogen atoms, or altering the position of the benzene rings changed their potency for inducing prostacyclin production.

The Na⁺/K⁺-ATPase is both upstream and downstream of cellular Ca²⁺ signals. Elevated levels of cytosolic Ca²⁺ have been shown to inhibit the Na⁺/K⁺-ATPase [36], and conversely inhibition of the enzyme causes Ca²⁺ oscillations [37]. Inhibition of the Na⁺/K⁺-ATPase within cardiomyocytes by cardiotonic steroids is known to cause increased Ca²⁺ signals, and can improve cardiac performance during conditions such as congestive heart failure [38]. It is more than a little inconvenient that fluorescent reporters used to monitor cellular Ca²⁺ responses could affect the activity of the Na⁺/K⁺-ATPase, which is involved in sensing and regulating Ca²⁺ signals. Moreover, Ca²⁺ indicators have been shown to impede Ca²⁺ release and Ca²⁺-dependent

channel inactivation [35,39,40], and alter the properties of Ca²⁺ signals [41].

A critical question concerning the continued use of chemical Ca²⁺ indicators is whether it is possible to overcome, or control for, their effects on Na⁺/K⁺-ATPase inhibition. One of the products resulting from the intracellular hydrolysis of esterified Ca²⁺ indicators is formaldehyde, which is widely used as a tissue fixing agent. However, Smith et al [1] found that the free acid forms of Ca²⁺ indicators and BAPTA could inhibit the Na⁺/K⁺-ATPase, suggesting that products released via ester hydrolysis were not causative. These observations indicate that introduction of Ca²⁺ indicators and BAPTA via microinjection or patch pipettes cannot solve the issue.

An alternative to the use of chemical Ca²⁺ indicators is genetically-encoded Ca²⁺ indicators (GECIs), which are generally based on the fusion of Ca²⁺-binding proteins with fluorescent proteins [42]. In their study, Smith et al. [1] demonstrated that the GECI GCaMP3 did not cause inhibition of the Na⁺/K⁺-ATPase, or alter the frequency of astrocytic Ca²⁺ signals. However, whilst GECIs have great utility, particularly for long-term recordings [43], they may not perform as well as chemical Ca²⁺ indicators in terms of their Ca²⁺-binding kinetics or sensitivity [44], and might be unsuitable in situations where cells (e.g. cardiomyocytes) could functionally change during the time needed for the GECI expression. As with chemical Ca²⁺ indicators, the use of GECIs relies on an adequate expression level, correct localization and the absence of deleterious cellular effects. However, it was found that following viral transduction, the expression level of GCaMP3 was not stable and increased over time, reaching an expression level above the optimum signal-to-noise ratio after 7 weeks [45]. Moreover, following long-term expression, GCaMP3 protein was not only found in the cytoplasm (its intended compartment), but additionally non-functional, N-terminally cleaved GCaMP3 accumulated in the nuclei of neurons [46,47], and atypical responses were observed [46]. The presence of non-functional GECI molecules resulted in an under-estimation of the observed Ca²⁺ responses.

Similar to chemical Ca²⁺ indicators, a substantial portion of GECIs can be bound to cellular targets (around 50% in neurons) [47], which could lead to altered properties such as a change of Ca²⁺ sensitivity. Furthermore, long-term expression of GECIs may result in prolonged Ca²⁺ buffering, thereby impacting on Ca²⁺-regulated processes including transcriptional regulation via NFAT or CREB. Since the expression of several Ca²⁺-transport systems is controlled through these Ca²⁺-dependent transcription factors (e.g. inositol 1,4,5-trisphosphate receptors and the mitochondrial uniporter via NFAT2 and CREB, respectively [48,49]), GECIs might adversely affect the expression of Ca²⁺ channels and transporters. Moreover, GECIs (specifically

Table 2

Assessing, and controlling for, Ca²⁺-independent cellular actions Ca²⁺ indicators and BAPTA, and other experimental issues arising from fluorescence imaging. Abbreviations: GECI; genetically-encoded Ca²⁺ indicator, IP₃; inositol 1,4,5-trisphosphate, 2-APB; 2-aminoethoxy diphenyl borate, U73122; 1-[6-[(17β)-3-Methoxyestra-1,3,5[10]-trien-17-yl]amino]hexyl]-1H-pyrrole-2,5-dione.

Approach	Utility	Notes
Application of ouabain	Given that the Na ⁺ /K ⁺ -ATPase has been shown to be affected by Ca ²⁺ indicators and BAPTA, ouabain could be used as a control. If ouabain replicates experimental outcomes observed using Ca ²⁺ indicators and BAPTA, then the Na ⁺ /K ⁺ -ATPase may be involved.	It would be difficult to know exactly how much ouabain would be needed to replicate putative Na ⁺ /K ⁺ -ATPase inhibition.
Use of low affinity BAPTA analogues	Low affinity BAPTA analogues can be loaded using the same conditions as for BAPTA. Due to their lesser affinity for Ca ²⁺ , the analogues should not replicate the effect of BAPTA if a particular cellular process is Ca ²⁺ dependent.	This is potentially the simplest control to perform. However, since the low affinity BAPTA analogues may not buffer Ca ²⁺ to the same extent as BAPTA, it would be necessary to show that they have loaded into the cells by measuring increased absorption at ~260 nm. One potential caveat in the use of BAPTA analogues is whether they have the same off-target effects. There is evidence that they share the same off-target actions on the Na ⁺ /K ⁺ -ATPase [1], phospholipase C [31] and prostacyclin release [32].
Non-Ca ²⁺ - buffering AM ester compounds	To assess the potential effects of de-esterification of Ca ²⁺ indicators and BAPTA within cells, it could be helpful to use non-Ca ²⁺ -buffering, cell-permeable esters as a reference. For example, BCECF-AM, a cell-permeable pH indicator, could be used as a reference.	Whilst this is an easy control to perform, it might be difficult to match the intracellular concentrations of Ca ²⁺ indicators and BAPTA with a reference indicator such as BCECF. In addition, reference indicators may have their own off-target effects.
Use of pharmacological reagents to verify the involvement of Ca ²⁺	An adjunct to the use of BAPTA to investigate the role of Ca ²⁺ signals in a cellular response could be pharmacological reagents that target specific Ca ²⁺ transport processes. For example, U73122, 2-APB and xestospongion B could be used to implicate IP ₃ signaling and/or Ca ²⁺ influx [53–55], or mitoxantrone may be used to examine the role of the mitochondrial Ca ²⁺ uniporter [56].	Pharmacological tools are sometimes ideal for acute experiments, and when the effective concentrations of the reagents are known. However, it can be difficult to definitively say that there are no off-target effects of a particular reagent, even when used at a low concentration. Some pharmacological tools have genetic correlates that can be used in parallel. For example, xestospongion B and 2-APB can be used in conjunction with the IP ₃ 5'-phosphatase, or a high-affinity IP ₃ sponge, to inhibit IP ₃ -mediated Ca ²⁺ signals [57,58]. Pharmacological approaches should ideally go hand-in-hand with genetic approaches. Knocking out specific Ca ²⁺ transport systems is accessible using techniques such as siRNA and CRISPR/Cas9.
Use of chelators to rule out effects of heavy metals	Chemical Ca ²⁺ indicators all show varying degrees of affinity for heavy metal ions like Mn ²⁺ and Zn ²⁺ [59]. If changes in the concentration of heavy metal ion concentrations occur, these might be interpreted as changes in the Ca ²⁺ concentration without appropriate controls.	Whether a response is due to changes in Ca ²⁺ or heavy metal ions can be tested by the use of heavy metal ion chelators like TPEN [60], although TPEN itself can affect Ca ²⁺ indicators [61]. An alternative compound with a lower K _d for Ca ²⁺ is phenanthroline [62–64].
Effects of pH and experimental reagents on Ca ²⁺ indicators and their calibration	The spectral characteristics and affinities of many chemical Ca ²⁺ indicators (and GECIs) is pH dependent. The affinity for Ca ²⁺ is usually not affected within the physiological cytosolic pH range, but can be reduced at acidic pH [65]. The fluorescence of Ca ²⁺ indicators may be affected by experimental reagents such as caffeine [66] and resveratrol [67].	If the cytosolic pH is expected to change substantially during an experiment, or Ca ²⁺ measurements in an organelle with a low pH is planned, the K _d of the Ca ²⁺ indicators (or GECIs) should be calibrated for the appropriate pH range as described in [68–70]. The effect of experimental reagents on Ca ²⁺ indicators can be tested using solutions of the indicator free acid. If an effect is observed, caution will be needed in interpreting experimental results and calibration. Whilst the principles of calibrating the output of Ca ²⁺ indicators, and transforming fluorescence recordings into Ca ²⁺ concentration, are relatively straightforward there are several potential pitfalls. For example, it may be difficult to obtain maximal and minimal fluorescence signals or the correct K _d values, and there may be Ca ²⁺ -insensitive or compartmentalised forms of Ca ²⁺ indicators within cells. Some of these issues, and their solutions, have been discussed previously [7,71–73].
Expression of GECIs and Ca ²⁺ -binding proteins	GECIs and Ca ²⁺ -binding proteins can be used for the same purposes as chemical Ca ²⁺ indicators and BAPTA providing that they can be expressed within the cells of interest.	GECIs are a growing method for monitoring cellular Ca ²⁺ signals. They can be targeted to specific cellular regions/structures and are available in different colour variants. GECIs can be expressed in a stable or transient manner. The impact of GECI expression should be monitored, as they may not be entirely benign [44,51,74]. Ca ²⁺ -binding proteins may need to be very highly expressed to have the same potency as BAPTA in buffering Ca ²⁺ -signals.
Mitigating potential pitfalls of chemical Ca ²⁺ indicators	There are a number of issues that can arise when performing fluorescence experiments: chelation of heavy metals, indicator bleaching, production of reactive oxygen species (ROS), compartmentalisation/extrusion of fluorescent reporters, and varying affinities of reporters for Ca ²⁺ in different cellular environments [73]. An issue that is not widely considered is the induction of autophagy when using simple extracellular solutions that do not have growth factors or amino acids. Autophagy can induce a change in Ca ²⁺ transport systems [75].	There are suitable controls and tests for most of these issues. For instance, compartmentalisation and extrusion of fluorescent reporters can often be avoided by loading AM esters at room temperature before warming cells to 37 °C, and by using ABC transporter inhibitors such as sulphinyprazole [76]. The impact of bleaching and ROS may be minimised by using short excitation exposure times and low incident light energy, or supplementation with ROS scavengers.

(continued on next page)

Table 2 (continued)

Approach	Utility	Notes
		The induction of autophagy can be tested using a number of markers, and can be avoided by including growth factors and amino acids in the extracellular medium. Complete phenol free culture medium can be used for imaging providing that it is supplemented with a pH buffer that can work outside a CO ₂ -gassed incubator. However, long term (> 7 h) presence of HEPES in the medium has been shown to induce autophagy [77].

GCaMPs) change the apparent sensitivity of cells to IP₃ [44]. Most transgenic GECI mice do not show an obviously altered phenotype [47], but profound effects of GECI expression have been observed, e.g. cardiac hypertrophy in a mouse expressing GCaMP2 [50]. It is plausible that mild phenotypic changes, which go undetected, could nevertheless affect the experimental results obtained with specific cell types. For example, a detailed study of transgenic mice expressing the troponin C-based GECI TN-XXL revealed changes in behavioural parameters, cardiac function and gene expression, despite the absence of a strong whole animal phenotype [51].

It is hard to say how much the effects of Ca²⁺ indicators and BAPTA on the Na⁺/K⁺-ATPase, as reported by Smith et al. [1], impinge on the results of published studies. However, it is a reminder that the loading of Ca²⁺ indicators is best kept minimal and should be controlled for. Whilst substantial loading of Ca²⁺ indicators may improve signal to noise in fluorescence recordings, it can actually lead to diminished Ca²⁺ signals due to buffering. Smith et al. [1] observed that the inhibition of the Na⁺/K⁺-ATPase was proportional to the concentration of Ca²⁺ indicator loaded. With modest concentrations of Ca²⁺-indicator loading, there was no significant effect on the Na⁺/K⁺-ATPase activity. It is possible that empirically establishing minimal Ca²⁺ indicator-loading conditions may avoid deleterious effects on the Na⁺/K⁺-ATPase and other yet unknown cellular targets. Some years ago, Erwin Neher pointed out that both very high and very low concentrations of a Ca²⁺ indicator, such as Fura-2, can be useful but for different experimental purposes, and that intermediate concentrations should be avoided as they will not give accurate results. Generally, to measure changes in the cytosolic free Ca²⁺ concentration, a minimal indicator concentration should be used to circumvent extra Ca²⁺ buffering, whilst for measuring Ca²⁺ flux a sufficient amount of Ca²⁺ indicator must be present to overcome the endogenous Ca²⁺ buffers in the cell [52].

In experiments where BAPTA is used to implicate the involvement of Ca²⁺ in a cellular process, it could be important to perform additional controls using low affinity versions of BAPTA such as dibromo-BAPTA and difluoro-BAPTA (K_d values 1.6 and 65 μM, respectively, compared to a K_d of 160 nM for BAPTA) (Fig. 1). These low affinity Ca²⁺ chelators should not phenocopy the effect of BAPTA if the cellular response involves Ca²⁺. Moreover, it would be ideal if the Ca²⁺ buffering of BAPTA was tested after it has been loaded into cells. The buffering of cytosolic Ca²⁺ is generally assumed after BAPTA-AM loading, and is not routinely demonstrated in studies that use BAPTA as a means of blocking cellular Ca²⁺ signalling. The effectiveness of BAPTA could be easily tested by stimulating GECI-expressing or Ca²⁺ indicator-loaded cells with a Ca²⁺-releasing agonist (e.g. ATP). If this is not suitable, the loading of BAPTA into cells could be verified by measuring absorbance of the compound at ~260 nm. Some of the approaches that may be taken to mitigate off-target effects of Ca²⁺ indicators and BAPTA, and ancillary experimental issues, are described in Table 2.

The study by Smith et al. [1] is a timely reminder that we need to be cautious in our use of chemical Ca²⁺ indicators and BAPTA. Evidence has been presented over many years that these compounds may have deleterious off-target actions (Table 1). However, there are a range of strategies that can be adopted to counteract potential confounding

effects (Table 2). Chemical Ca²⁺ indicators and BAPTA remain ideal tools for certain situations, but additional control experiments may be both necessary and prudent.

Acknowledgements

Work in the authors' laboratories has been supported by grants provided by The Open University, and the Research Council – KU Leuven and the Research Foundation – Flanders (FWO).

References

- [1] N.A. Smith, B.T. Kress, Y. Lu, D. Chandler-Militello, A. Benraiss, M. Nedergaard, Fluorescent Ca(2+) indicators directly inhibit the Na,K-ATPase and disrupt cellular functions, *Sci. Signal.* 11 (2018).
- [2] G. Grynkiewicz, M. Poenie, R.Y. Tsien, A new generation of Ca²⁺ indicators with greatly improved fluorescence properties, *J. Biol. Chem.* 260 (1985) 3440–3450.
- [3] A. Minta, J.P. Kao, R.Y. Tsien, Fluorescent indicators for cytosolic calcium based on rhodamine and fluorescein chromophores, *J. Biol. Chem.* 264 (1989) 8171–8178.
- [4] M.D. Bootman, K. Rietdorf, T. Collins, S. Walker, M. Sanderson, Ca²⁺-sensitive fluorescent dyes and intracellular Ca²⁺ imaging, *Cold Spring Harb. Protoc.* 2013 (2013) 83–99.
- [5] R.Y. Tsien, A non-disruptive technique for loading calcium buffers and indicators into cells, *Nature* 290 (1981) 527–528.
- [6] M. Cameron, O. Kekesi, J.W. Morley, J. Tapson, P.P. Breen, A. van Schaik, Y. Buskila, Calcium imaging of AM dyes following prolonged incubation in acute neuronal tissue, *PLoS One* 11 (2016) e0155468.
- [7] M.D. Bootman, K. Rietdorf, T. Collins, S. Walker, M. Sanderson, Converting fluorescence data into Ca²⁺ concentration, *Cold Spring Harb. Protoc.* 2013 (2013) 126–129.
- [8] A. Verkhratsky, M. Nedergaard, Physiology of astroglia, *Physiol. Rev.* 98 (2018) 239–389.
- [9] L. Reinhard, H. Tidow, M.J. Clausen, P. Nissen, Na(+),K(+)-ATPase as a docking station: protein-protein complexes of the Na(+),K(+)-ATPase, *Cell. Mol. Life Sci.* 70 (2013) 205–222.
- [10] E.A. Klimanova, A.M. Tverskoi, S.V. Koltsova, S.V. Sidorenko, O.D. Lopina, J. Tremblay, P. Hamet, L.V. Kapilevich, S.N. Orlov, Time- and dose dependent actions of cardiotonic steroids on transcriptome and intracellular content of Na(+) and K(+): a comparative analysis, *Sci. Rep.* 7 (2017) 45403.
- [11] Y. Liu, S. Shoji-Kawata, R.M. Sumpter Jr., Y. Wei, V. Ginet, L. Zhang, B. Posner, K.A. Tran, D.R. Green, R.J. Xavier, S.Y. Shaw, P.G. Clarke, J. Puyal, B. Levine, Autosis is a Na⁺,K⁺-ATPase-regulated form of cell death triggered by autophagy-inducing peptides, starvation, and hypoxia-ischemia, *Proc. Natl. Acad. Sci. U. S. A.* 110 (2013) 20364–20371.
- [12] T. Pozzan, R. Rudolf, Measurements of mitochondrial calcium in vivo, *Biochim. Biophys. Acta* 1787 (2009) 1317–1323.
- [13] J.S. Modica-Napolitano, M.J. Weiss, L.B. Chen, J.R. Aprille, Rhodamine 123 inhibits bioenergetic function in isolated rat liver mitochondria, *Biochem. Biophys. Res. Commun.* 118 (1984) 717–723.
- [14] A.R. Gear, Rhodamine 6G. A potent inhibitor of mitochondrial oxidative phosphorylation, *J. Biol. Chem.* 249 (1974) 3628–3637.
- [15] L.A. Blatter, W.G. Wier, Intracellular diffusion, binding, and compartmentalization of the fluorescent calcium indicators indo-1 and fura-2, *Biophys. J.* 58 (1990) 1491–1499.
- [16] E. Chiancone, E. Thulin, A. Boffi, S. Forsen, M. Brunori, Evidence for the interaction between the calcium indicator 1,2-bis(o-aminophenoxy)ethane-N,N,N',N'-tetraacetic acid and calcium-binding proteins, *J. Biol. Chem.* 261 (1986) 16306–16308.
- [17] M. Konishi, A. Olson, S. Hollingworth, S.M. Baylor, Myoplasmic binding of fura-2 investigated by steady-state fluorescence and absorbance measurements, *Biophys. J.* 54 (1988) 1089–1104.
- [18] M. Zhao, S. Hollingworth, S.M. Baylor, Properties of tri- and tetracarboxylate Ca²⁺ indicators in frog skeletal muscle fibers, *Biophys. J.* 70 (1996) 896–916.
- [19] A.J. Baker, R. Brandes, J.H. Schreuer, S.A. Camacho, M.W. Weiner, Protein and acidosis alter calcium-binding and fluorescence spectra of the calcium indicator indo-1, *Biophys. J.* 67 (1994) 1646–1654.
- [20] L. Hove-Madsen, D.M. Bers, Indo-1 binding to protein in permeabilized ventricular myocytes alters its spectral and Ca binding properties, *Biophys. J.* 63 (1992) 89–97.
- [21] F. Bancel, J.-M. Salmon, J. Vigo, T. Vo-Dinh, P. Viallet, Investigation of noncalcium interactions of fura-2 by classical and synchronous fluorescence spectroscopy, *Anal. Biochem.* 204 (1992) 231–238.
- [22] C. Toyoshima, R. Kanai, F. Cornelius, First crystal structures of Na⁺,K⁺-ATPase:

- new light on the oldest ion pump, *Structure* 19 (2011) 1732–1738.
- [23] W. Sandtner, B. Egwolf, F. Khalili-Araghi, J.E. Sanchez-Rodriguez, B. Roux, F. Bezanilla, M. Holmgren, Ouabain binding site in a functioning Na⁺/K⁺ ATPase, *J. Biol. Chem.* 286 (2011) 38177–38183.
- [24] K.J. Sweadner, C. Donnet, Structural similarities of Na,K-ATPase and SERCA, the Ca²⁺-ATPase of the sarcoplasmic reticulum, *Biochem. J.* 356 (2001) 685–704.
- [25] S.H.F.B.D.J.C.B.J.M. Boeynaems, Synthesis of BAPTA-AM analogues capable of enhancing the vascular production of prostacyclin, *Bull. Soc. Chim. Belg.* 103 (1994) 309–319.
- [26] T. Yosuke, M. Yoshito, Inhibitory effects of loading with the calcium chelator 1,2-bis(o-aminophenoxy)ethane-N, N, N', N'-tetraacetic acid (bapta) on amylase release and cellular atp level in rat parotid, *Biochem. Pharmacol.* 39 (1990) 1775–1779.
- [27] J.P. Whitehead, J.C. Molero, S. Clark, S. Martin, G. Meneilly, D.E. James, The role of Ca²⁺ + in insulin-stimulated glucose transport in 3T3-L1 cells, *J. Biol. Chem.* 276 (2001) 27816–27824.
- [28] Y. Saoudi, B. Rousseau, J. Doussi re, S. Charrasse, C. Gauthier-Rouvi re, N. Morin, C. Sautet-Laugier, E. Denarier, R. Scaife, C. Mioskowski, D. Job, Calcium-independent cytoskeleton disassembly induced by BAPTA, *Eur. J. Biochem.* 271 (2004) 3255–3264.
- [29] V. Sabanov, J. Nedergaard, Ca²⁺ -independent effects of BAPTA and EGTA on single-channel Cl⁻ currents in brown adipocytes, *Biochim. Biophys. Acta (BBA) – Biomembr.* 1768 (2007) 2714–2725.
- [30] A. Furuta, M. Tanaka, W. Omata, M. Nagasawa, I. Kojima, H. Shibata, Microtubule disruption with BAPTA and dimethyl BAPTA by a calcium chelation-independent mechanism in 3T3-L1 adipocytes, *Endocr. J.* 56 (2009) 235–243.
- [31] R.C. Hardie, Inhibition of phospholipase C activity in *Drosophila* photoreceptors by 1,2-bis(2-aminophenoxy)ethane N,N,N',N'-tetraacetic acid (BAPTA) and di-bromo BAPTA, *Cell Calcium* 38 (2005) 547–556.
- [32] J.M. Boeynaems, S. Heilporn, F. Broeders, J.C. Braekman, Enhancement of the endothelial production of prostacyclin by substituted derivatives of BAPTA-AM, *Eur. J. Pharmacol.* 233 (1993) 13–20.
- [33] Q. Tang, M.W. Jin, J.Z. Xiang, M.Q. Dong, H.Y. Sun, C.P. Lau, G.R. Li, The membrane permeable calcium chelator BAPTA-AM directly blocks human ether a-go-related gene potassium channels stably expressed in HEK 293 cells, *Biochem. Pharmacol.* 74 (2007) 1596–1607.
- [34] P. Dieter, E. Fitzke, J. Duyster, BAPTA induces a decrease of intracellular free calcium and a translocation and inactivation of protein kinase C in macrophages, *Biol. Chem. Hoppe Seyler* 374 (1993) 171–174.
- [35] A. Richardson, C.W. Taylor, Effects of Ca²⁺ chelators on purified inositol 1,4,5-trisphosphate (InsP3) receptors and InsP3-stimulated Ca²⁺ mobilization, *J. Biol. Chem.* 268 (1993) 11528–11533.
- [36] A.M. Brown, V.L. Lew, The effect of intracellular calcium on the sodium pump of human red cells, *J. Physiol.* 343 (1983) 455–493.
- [37] A. Aperia, E.E. Akkuratov, J.M. Fontana, H. Brismar, Na⁺-K⁺-ATPase, a new class of plasma membrane receptors, *Am. J. Physiol. Cell Physiol* 310 (2016) C491–495.
- [38] W.B. Hood, A. Dans, G.H. Guyatt, R. Jaeschke, J. McMurray, Digitalis for treatment of congestive heart failure in patients in sinus rhythm, *Cochrane Database Syst. Rev.* (2001) CD002901.
- [39] M.T. Alonso, P. Chamero, C. Villalobos, J. Garcia-Sancho, Fura-2 antagonises calcium-induced calcium release, *Cell Calcium* 33 (2003) 27–35.
- [40] S. Hollingworth, A.B. Harkins, N. Kurebayashi, M. Konishi, S.M. Baylor, Excitation-contraction coupling in intact frog skeletal muscle fibers injected with mmolar concentrations of fura-2, *Biophys. J.* 63 (1992) 224–234.
- [41] I. Kopljar, A.N. Hermans, A. Teisman, D.J. Gallacher, H.R. Lu, Impact of calcium-sensitive dyes on the beating properties and pharmacological responses of human iPSC-derived cardiomyocytes using the calcium transient assay, *J. Pharmacol. Toxicol. Methods* 91 (2018) 80–86.
- [42] V. Perez Koldenkova, T. Nagai, Genetically encoded Ca(2+) indicators: properties and evaluation, *Biochim. Biophys. Acta* 1833 (2013) 1787–1797.
- [43] J.J. Bassett, G.R. Monteith, Genetically encoded calcium indicators as probes to assess the role of calcium channels in disease and for high-throughput drug discovery, *Adv. Pharmacol.* 79 (2017) 141–171.
- [44] J.T. Lock, I. Parker, I.F. Smith, A comparison of fluorescent Ca(2+) indicators for imaging local Ca(2+) signals in cultured cells, *Cell Calcium* 58 (2015) 638–648.
- [45] D. Huber, D.A. Gutnisky, S. Peron, D.H. O'Connor, J.S. Wiegert, L. Tian, T.G. Oertner, L.L. Looger, K. Svoboda, Multiple dynamic representations in the motor cortex during sensorimotor learning, *Nature* 484 (2012) 473–478.
- [46] T.W. Chen, T.J. Wardill, Y. Sun, S.R. Pulver, S.L. Renninger, A. Baohan, E.R. Schreiter, R.A. Kerr, M.B. Orger, V. Jayaraman, L.L. Looger, K. Svoboda, D.S. Kim, Ultrasensitive fluorescent proteins for imaging neuronal activity, *Nature* 499 (2013) 295–300.
- [47] M.T. Hasan, R.W. Friedrich, T. Euler, M.E. Larkum, G. Giese, M. Both, J. Duebel, J. Waters, H. Bujard, O. Griesbeck, R.Y. Tsien, T. Nagai, A. Miyawaki, W. Denk, Functional fluorescent Ca²⁺ indicator proteins in transgenic mice under TET control, *PLoS Biol.* 2 (2004) e163.
- [48] C. Li, C.J. Fox, S.R. Master, V.P. Bindokas, L.A. Chodosh, C.B. Thompson, Bcl-X(L) affects Ca(2+) homeostasis by altering expression of inositol 1,4,5-trisphosphate receptors, *Proc. Natl. Acad. Sci. U. S. A.* 99 (2002) 9830–9835.
- [49] S. Shanmughapriya, S. Rajan, N.E. Hoffman, X. Zhang, S. Guo, J.E. Kolesar, K.J. Hines, J. Ragheb, N.R. Jog, R. Caricchio, Y. Baba, Y. Zhou, B.A. Kaufman, J.Y. Cheung, T. Kurosaki, D.L. Gill, M. Madesh, Ca²⁺ + signals regulate mitochondrial metabolism by stimulating CREB-mediated expression of the mitochondrial Ca²⁺ + uniporter gene MCU, *Sci. Signal.* 8 (2015) ra23.
- [50] Y.N. Tallini, M. Ohkura, B.R. Choi, G. Ji, K. Imoto, R. Doran, J. Lee, P. Plan, J. Wilson, H.B. Xin, A. Sanbe, J. Gulick, J. Mathai, J. Robbins, G. Salama, J. Nakai, M.I. Kotlikoff, Imaging cellular signals in the heart in vivo: cardiac expression of the high-signal Ca²⁺ + indicator GCaMP2, *Proc. Natl. Acad. Sci. U. S. A.* 103 (2006) 4753–4758.
- [51] S. Direnberger, M. Mues, V. Micale, C.T. Wotjak, S. Dietzel, M. Schubert, A. Scharr, S. Hassan, C. Wahl-Schott, M. Biel, G. Krishnamoorthy, O. Griesbeck, Biocompatibility of a genetically encoded calcium indicator in a transgenic mouse model, *Nat. Commun.* 3 (2012) 1031.
- [52] E. Neher, G.J. Augustine, Calcium gradients and buffers in bovine chromaffin cells, *J. Physiol.* 450 (1992) 273–301.
- [53] J.E. Bleasdale, G.L. Bundy, S. Bunting, F.A. Fitzpatrick, R.M. Huff, F.F. Sun, J.E. Pike, Inhibition of phospholipase C dependent processes by U-73, 122, *Adv. Prostaglandin Thromboxane Leukot. Res.* 19 (1989) 590–593.
- [54] E. Jaimovich, C. Mattei, J.L. Liberona, C. Cardenas, M. Estrada, J. Barbier, C. Debitus, D. Laurent, J. Molgo, B. Xestospingon, A competitive inhibitor of IP3-mediated Ca²⁺ + signalling in cultured rat myotubes, isolated myonuclei, and neuroblastoma (NG108-15) cells, *FEBS Lett.* 579 (2005) 2051–2057.
- [55] M.D. Bootman, T.J. Collins, L. Mackenzie, H.L. Roderick, M.J. Berridge, C.M. Peppiatt, 2-Aminoethoxydiphenyl borate (2-APB) is a reliable blocker of store-operated Ca²⁺ + entry but an inconsistent inhibitor of InsP3-induced Ca²⁺ + release, *FASEB J.* 16 (2002) 1145–1150.
- [56] D.M. Arduino, J. Wettmarshausen, H. Vais, P. Navas-Navarro, Y. Cheng, A. Leimpck, Z. Ma, A. Delrio-Lorenzo, A. Giordano, C. Garcia-Perez, G. Medard, B. Kuster, J. Garcia-Sancho, D. Mokranjac, J.K. Foskett, M.T. Alonso, F. Perocchi, Systematic identification of MCU modulators by orthogonal interspecies chemical screening, *Mol. Cell* 67 (2017) 711–723 e717.
- [57] M.D. Bootman, T. Chehab, G. Bultynck, J.B. Parys, K. Rietdorf, The regulation of autophagy by calcium signals: do we have a consensus? *Cell Calcium* 70 (2017) 32–46.
- [58] T. Uchiyama, F. Yoshikawa, A. Hishida, T. Furuichi, K. Mikoshiba, A novel recombinant hyperaffinity inositol 1,4,5-trisphosphate (IP(3)) absorbent traps IP(3), resulting in specific inhibition of IP(3)-mediated calcium signaling, *J. Biol. Chem.* 277 (2002) 8106–8113.
- [59] A. Takahashi, P. Camacho, J.D. Lechleiter, B. Herman, Measurement of intracellular calcium, *Physiol. Rev.* 79 (1999) 1089–1125.
- [60] P. Arslan, F.Di Virgilio, M. Beltrame, R.Y. Tsien, T. Pozzan, Cytosolic Ca²⁺ + homeostasis in Ehrlich and Yoshida carcinomas. A new, membrane-permeant chelator of heavy metals reveals that these ascites tumor cell lines have normal cytosolic free Ca²⁺ +, *J. Biol. Chem.* 260 (1985) 2719–2727.
- [61] M. Ohkubo, A. Miyamoto, M. Shiraishi, Heavy metal chelator TPEN attenuates fura-2 fluorescence changes induced by cadmium, mercury and methylmercury, *J. Vet. Med. Sci.* 78 (2016) 761–767.
- [62] A.J. Morgan, J. Parrington, A. Galione, The luminal Ca(2+) chelator, TPEN, inhibits NAADP-induced Ca(2+) release, *Cell Calcium* 52 (2012) 481–487.
- [63] H.A.J. Farach, D.I. Mundy, W.J. Strittmatter, W.J. Lennarz, Evidence for the involvement of metalloendoproteases in the acrosome reaction in sea urchin sperm, *J. Biol. Chem.* 262 (12) (1987) 5483–5487.
- [64] P.R. Mitchell, H. Sigel, Ternary complexes in solution. 28. Enhanced stability of ternary metal ion/adenosine 5'-triphosphate complexes. Cooperative effects caused by stacking interactions in complexes containing adenosine triphosphate, phenanthroline, and magnesium, calcium, or zinc ions, *J. Am. Chem. Soc.* 100 (1978) 1564–1570.
- [65] P. Rohrbach, O. Friedrich, J. Hentschel, H. Plattner, R.H. Fink, M. Lanzer, Quantitative calcium measurements in subcellular compartments of Plasmodium falciparum-infected erythrocytes, *J. Biol. Chem.* 280 (2005) 27960–27969.
- [66] D.L. Bennett, M.D. Bootman, M.J. Berridge, T.R. Cheek, Ca²⁺ + entry into PC12 cells initiated by ryanodine receptors or inositol 1,4,5-trisphosphate receptors, *Biochem. J.* 329 (Pt 2) (1998) 349–357.
- [67] R.C. Paudel, S. Kiviluoto, J.B. Parys, G. Bultynck, Resveratrol is not compatible with a Fura-2-based assay for measuring intracellular Ca(2+) signaling, *Biochem. Biophys. Res. Commun.* 450 (2014) 1626–1630.
- [68] K.A. Christensen, J.T. Myers, J.A. Swanson, pH-dependent regulation of lysosomal calcium in macrophages, *J. Cell Sci.* 115 (2002) 599–607.
- [69] E. Lloyd-Evans, A.J. Morgan, X. He, D.A. Smith, E. Elliot-Smith, D.J. Sillence, G.C. Churchill, E.H. Schuchman, A. Galione, F.M. Platt, Niemann-Pick disease type C1 is a sphingosine storage disease that causes deregulation of lysosomal calcium, *Nat. Med.* 14 (2008) 1247–1255.
- [70] P.A. Negulescu, T.E. Machen, Lowering extracellular sodium or pH raises intracellular calcium in gastric cells, *J. Membr. Biol.* 116 (1990) 239–248.
- [71] M. Poenie, Alteration of intracellular Fura-2 fluorescence by viscosity: a simple correction, *Cell Calcium* 11 (1990) 85–91.
- [72] S.M. Harrison, D.M. Bers, The effect of temperature and ionic strength on the apparent Ca-affinity of EGTA and the analogous Ca-chelators BAPTA and dibromo-BAPTA, *Biochim. Biophys. Acta* 925 (1987) 133–143.
- [73] D. Thomas, S.C. Tovey, T.J. Collins, M.D. Bootman, M.J. Berridge, P. Lipp, A comparison of fluorescent Ca²⁺ indicator properties and their use in measuring elementary and global Ca²⁺ signals, *Cell Calcium* 28 (2000) 213–223.
- [74] M.I. Kotlikoff, Genetically encoded Ca²⁺ indicators: using genetics and molecular design to understand complex physiology, *J. Physiol.* 578 (2007) 55–67.
- [75] J.P. Decuyper, K. Welkenhuyzen, T. Luyten, R. Ponsaerts, M. Dewaele, J. Molgo, P. Agostinis, L. Missiaen, H. De Smedt, J.B. Parys, G. Bultynck, Ins(1,4,5)P3 receptor-mediated Ca²⁺ signaling and autophagy induction are interrelated, *Autophagy* 7 (2011) 1472–1489.
- [76] M.D. Bootman, C.W. Taylor, M.J. Berridge, The thiol reagent, thimerosal, evokes Ca²⁺ spikes in HeLa cells by sensitizing the inositol 1,4,5-trisphosphate receptor, *J. Biol. Chem.* 267 (1992) 25113–25119.
- [77] M.J. Tol, M.J.C. van der Lienden, T.L. Gabriel, J.J. Hagen, S. Scheij, T. Veenendaal, J. Klumperman, W.E. Donker-Koopman, A.J. Verhoeven, H. Overkleeft, J.M. Aerts, C.A. Argmann, M. van Eijk, HEPES activates A MIT/TFE-dependent lysosomal-autophagic gene network in cultured cells: a call for caution, *Autophagy* (2018) 1–13.