

Experimental evidence for electric surface resistance in niobium

T. Junginger, Helmholtz-Zentrum Berlin für Materialien und Energie, Germany

Email: Tobias.Junginger@helmholtz-berlin.de

S. Aull, CERN, Geneva, Switzerland

W. Weingarten, retired from CERN, Geneva, Switzerland

C. P. Welsch, Cockcroft Institute, Warrington and University of Liverpool, United Kingdom

Abstract—Identifying the loss mechanisms of niobium cavities enables an accurate determination of applications for future accelerator projects and points to research topics required to mitigate current limitations. For several cavities an increasing surface resistance above a threshold field, saturating at higher field has been observed. Measurements on samples give evidence that this effect is caused by the surface electric field. The measured temperature and frequency dependence is consistent with a model that accounts for these losses by interface tunnel exchange between localized states in dielectric oxides and the adjacent superconductor.

Index Terms—Accelerator Cavities, Superconducting materials measurements, Superconducting films, Superconducting cavity resonators, Superconducting accelerator cavities, Niobium, Surface impedance

I. INTRODUCTION

Superconducting cavities made of niobium are nowadays routinely reaching surface resistances R_S as low as a few $n\Omega$ at surface magnetic fields above 100 mT corresponding to peak electric fields of over 50 MV/m, some performing close to the theoretical limit of the material [1]. Nevertheless many open questions concerning the field dependence of R_S exist. Especially in the medium field region between a few and about 100 mT differently prepared cavities show different field dependencies. Some cavities exhibit an increasing, some a decreasing surface resistance. Especially cavities prepared by coating a micrometer thick niobium film on a copper substrate exhibit a strong increase of R_S with field. This paper focuses on cavities which show an increasing R_S with field.

II. ELECTRICAL LOSSES FROM INTERFACE TUNNEL EXCHANGE

Several authors have pointed out that there are several loss mechanisms involved which need to be addressed individually to obtain a better understanding and possibly mitigate their impact for specific cavities. Here we present a loss mechanism of electrical origin, already observed, though not further quantified, in prototypes of superconducting bulk niobium cavities for the Large Electron Positron Collider at CERN [2]. These losses yield an R_S increasing above a threshold field saturating at higher field [3] and can be explained by the interface tunnel exchange model (ITE) [4]. ITE assumes that electrons are exchanged between states in the superconducting Nb and localized states in adjacent dielectric oxides (Nb_2O_5

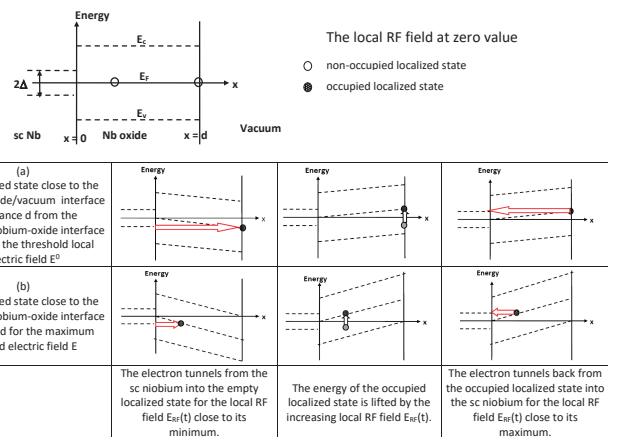


Fig. 1. Current flow (red arrows) and voltage gain (black arrows) for (a) a localized state on top of the niobium-oxide layer and (b) close to the niobium/niobium-oxide interface (x - distance from niobium/niobium-oxide interface, Δ - energy gap of the sc niobium, E_F - Fermi level, E_V - Valence band of the niobium oxide, E_C - conduction band of niobium oxide, d - thickness of niobium oxide layer). The RF field E lifts the occupied localized states above $E_F + \Delta$, from where they tunnel back into the sc niobium and dissipate the energy gained.

and/or NbO_2). This exchange is caused by the surface electric field E penetrating only the oxide and not the superconductor, allowing for an exchange of electrons with gained energy (i.e. a current) by quantum mechanical tunneling between the niobium and its oxide (Fig. 1). Here we follow Halbritter [4] and take it as given that (i) the RF period is much shorter compared to the relaxation time of the occupied states in the oxide, (ii) the tunneling process is instantaneous, and (iii) the oxide thickness is much shorter than the range of the tunneling electrons. When the RF electric field is negative, the empty localized states are filled with electrons by quantum mechanical tunneling. The rising RF electric field lifts their potential energy until it exceeds $E_F + \Delta$ for a positive electric surface field. This threshold energy is reached first for the localized states far outside on top of the niobium-oxide, for which the voltage gain is maximum. The corresponding surface electric field is the threshold field E_0 . From that moment on the electrons are tunneling back into the sc niobium, upon which they dissipate the energy gained. As the electrons relax and dissipate once per RF period R_S^E depends linearly on the RF frequency f . Within the superconducting energy gap 2Δ

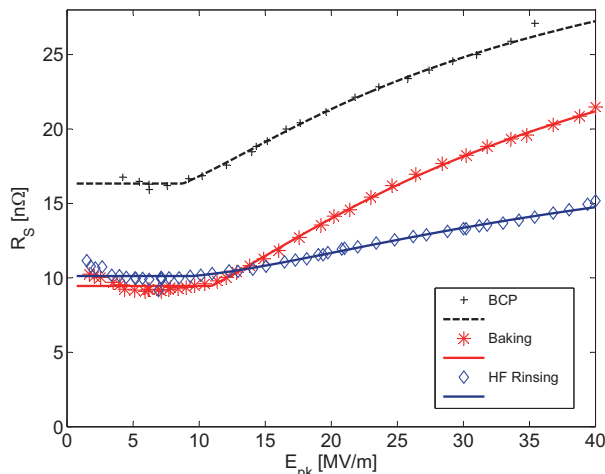


Fig. 2. Surface resistance of an elliptical 1300 MHz bulk niobium cavity at 2 K. The lines show fits to the ITE model (Eq. 4). Data taken by Romanenko et al. [5]

there are no electronic states available for a current to flow. Therefore there exists a threshold electric field E^0 , depending on the thickness of the oxide d and on Δ , below which there is no current and hence no RF loss. In a quantitative analysis, Halbritter calculated the surface resistance for ITE losses as [4]:

$$R_S^E = R_{S,\text{sat}}^E \left[e^{-b/E} - e^{-b/E^0} \right], \quad E \geq E^0. \quad (1)$$

The parameters $R_{S,\text{sat}}^E$, b and E^0 are defined by

$$b = \frac{2\kappa\Delta\epsilon_r}{\beta^*e}, \quad R_{S,\text{sat}}^E = \frac{2\pi f\mu_0}{(2\kappa)^2 y} / f[\text{GHz}], \quad E^0 = \frac{\Delta\epsilon_r}{ed\beta^*} \quad (2)$$

with

$$\kappa = \sqrt{2m(E_c - E_F)/\hbar}, \quad y^{-1} = \frac{\langle xn_T \rangle e^2}{\epsilon_0\epsilon_r}. \quad (3)$$

Here $R_{S,\text{sat}}^E$ is normalized to 1 GHz to facilitate comparison of data sets obtained at different frequencies. The meaning of the physical parameters is the following: E_c and E_F are the energies of the conduction band and the Fermi energy, respectively; $\langle xn_T \rangle$ is the averaged product of the density of trapped electron states n_T and the distance of the localized states from the niobium/niobium-oxide interface x , d is the thickness of the oxide; ϵ_r is the relative dielectric constant; β^* is the geometric field enhancement factor of the metal due to surface roughness; m , e , ϵ_0 , μ_0 and \hbar are the usual physical constants, such as the electron mass and electric charge, vacuum permittivity, vacuum permeability and Planck constant, in this order. The energy change in the oxide $E_x\beta^0/\epsilon_r$ is in the order of a few meV enough to overcome the energy barrier.

III. EXPERIMENTAL RESULTS

A. Tesla type bulk niobium cavity

Figure 2 shows R_S as a function of the peak electric field E_{pk} at 2 K of a 1.3 GHz elliptical TESLA shaped [6] cavity. It was manufactured of fine grain bulk niobium (grain size

of about 50 μm). The first measurement was performed after chemical polishing (BCP). Afterwards the cavity was in situ baked at 120 °C. Then several hydrofluoric (HF) rinsings were done to remove about 10 nm of the outer surface layer [5]. The dashed lines show fits to the ITE model with one additional parameter, an additional resistance R_0 which is assumed to be independent of field. This parameter accounts for losses from thermally activated particles and residual losses from other not further specified origin as well. For the analysis it is assumed that the field dependence is mainly due to ITE and therefore R_0 is taken as constant. The total R_S is thus assumed to be

$$R_S = R_S^E(E) + R_0. \quad (4)$$

The phenomenological fit parameters (also found in Tab. I) correspond to physical meaningful parameters (compare with [7] and quotations therein and [8], [9]) as $\beta^*=1$, $\epsilon_r=10$, $E_c - E_F=0.05$ eV, $\Delta=1.18$ meV, $d=1.65$ nm and $\langle xn_T \rangle=6.7 \cdot 10^{15}$ 1/(eVm²), before and $\beta^*=1$, $\epsilon_r=10$, $E_c - E_F=0.05$ eV, $\Delta=1.33$ meV, $d=1.27$ nm and $\langle xn_T \rangle=8.1 \cdot 10^{15}$ 1/(eVm²) after baking. The values of $E_c - E_F$ are inconsistent with the band gap of Nb₂O₅ (3.4-5.3 eV [10]) but fit neatly the value of NbO₂ (0.1 eV [11]). Hence the localized states participating in the exchange could be found in the NbO₂ for which the value of $\epsilon_r=10$ is consistent with [12]. Recent results show that after mild baking the total thickness of the oxide layer is reduced, but the thickness of the NbO₂ layer enhanced [8], which is consistent with an enhanced $R_{S,\text{sat}}^E$ and corresponding $\langle xn_T \rangle$. Another explanation for such a small $E_c - E_F$ is that the localized states are found at crystallographic shear planes in the Nb₂O₅. These are created by the NbO₆ building blocks sharing sides instead of indices [7]. After HF rinsing the threshold seems to disappear. NbO₂ is well-known for its non-solubility in water and HF. This suggests that the states are rather located in the crystallographic shear planes of Nb₂O₅ and not in NbO₂.

In summary the analysis of the TESLA shaped cavity shows that there is a threshold effect as predicted by the ITE model in the surface resistance. The contribution of ITE to the field dependent surface resistance is enhanced by mild baking and mitigated by HF rinsing. This can be correlated to the oxide layer being altered by these processes. Inspecting Fig. 2 one might argue that the threshold field of the surface resistance R_S at 7-12 MV/m could be result of two opposing effects. For the first one R_S may drop with the field, as observed by [13] and for the second one R_S may increase with field. We cannot refute this argument entirely. However, by virtue of the

TABLE I
PARAMETERS DERIVED FOR A LEAST SQUARES FIT TO EQ. 4 OF A BULK NIOBIUM CAVITY (CF. FIG. 2).

	BCP	120 °C baking	HF rinsing
$R_{S,\text{sat}}^E$ in nΩ	18.4±0.8	22.3±0.9	14.0±1.4
E^0 in MV/m	7.1±1.2	10.5±0.5	4±250 ¹
b in MV/m	26.9±1.2	30±3	44±4
R_0 in nΩ	16.6±0.4	9.24±0.09	11.0±0.2
R^2 for Eq. 4	0.9987	0.9988	0.9885

excellent fits of the ITE model to the data at higher fields its validity for the data before HF rinsing is suggested.

B. Niobium on Copper quarter wave cavity

The High Intensity and Energy On-Line Isotope Mass Separator (HIE-ISOLDE) is a facility currently under construction at CERN. It comprises a superconducting linac of quarter wave cavities produced by niobium on copper sputtering technology. Relevant cavity parameters for the analysis presented here are the magnetic and the electric geometry factor $G=30.34\text{ n}\Omega$ and $G_E=29.16\text{ n}\Omega$ respectively, the ratio between peak electric and magnetic field $E_{pk}/B_{pk}=0.56\text{ MV/m}$ and the resonance frequency of 101.28 MHz . In an early stage of the project a cavity has been produced which yielded a surface resistance exceeding the design value by almost a factor of ten, see Fig. 3. The surface resistance was measured at 3 and 4.5 K to separate residual and BCS losses. Both curves show a threshold effect suggesting the ITE model is applicable here. The data for each temperature has been individually fitted to Eq. 4. Within the standard fit errors (95 % confidence bounds), see Tab II, R_0 is equal for both temperatures showing that the losses are dominated by the residual resistance. The other phenomenological fit parameters $R_{S,\text{sat}}^E$, b and E^0 can be correlated to a set of physical parameters with meaningful values as $\beta^*=1$, $\epsilon_r=10$, $E_c - E_F=0.01\text{ eV}$, $\Delta=1.04\text{ meV}$, $d=1.7\text{ nm}$ and $\langle xn_T \rangle=3.6\cdot 10^{17}\text{ 1/(eVm}^2\text{)}$. A critical assessment of these numbers lies however beyond the scope of this paper. The major difference compared to the TESLA type cavity is the larger $R_{S,\text{sat}}^E$ which can be explained by a larger value of trapped electron states n_T .

In summary the analysis of the HIE-Isolde cavity confirms that there is a threshold effect as predicted by the ITE model in the surface resistance. The threshold field is independent of temperature as predicted by the model.

C. Quadrupole Resonator measurements

In order to test whether the losses accounted for by ITE scale linearly with frequency as predicted by the model a cavity test is not suitable. The Quadrupole Resonator [14] is a unique device enabling to test R_S of superconducting samples over a wide parameter range. It features two excitable modes at 400 and 800 MHz with identical magnetic field configuration on the sample surface. The ratio between electric and magnetic field for these two modes is proportional to f . For example for a peak magnetic field $B_p=10\text{ mT}$, the peak electric fields are $E_p=0.52$ and 1.04 MV/m for 400 and 800 MHz, respectively [15]. This feature allows for a separation of magnetic and electrical losses from measurement data by comparison with theoretical models as will be explained and carried out in the

TABLE II
FIT PARAMETERS INTERFACE TUNNEL EXCHANGE MODEL TO
HIE-ISOLDE CAVITY DATA

T in K	$R_0[\text{n}\Omega]$	$R_{S,\text{sat}}^E[\text{n}\Omega]$	$E^0[\text{MV/m}]$	$b[\text{MV/m}]$	R^2
3	193 ± 3	6500 ± 2200	5.4 ± 0.2	3.5 ± 1.6	0.9985
4.5	188 ± 4	4100 ± 200	5.0 ± 0.4	9 ± 3	0.9973

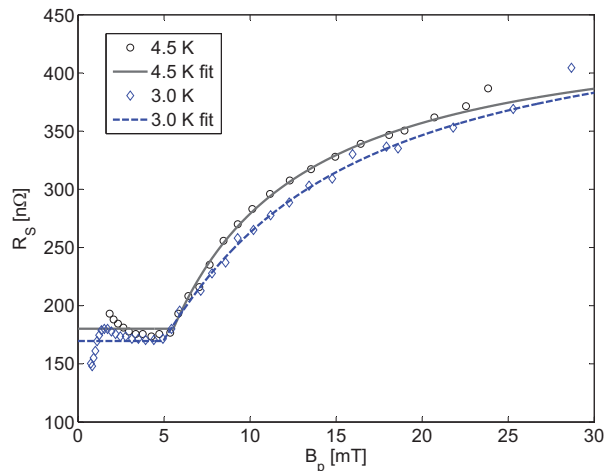


Fig. 3. Surface resistance of a HIE-Isolde quarter-wave cavity at 3 and 4.5 K. The uncertainty is about 5 % for each data point. Measurement were performed by M. Therasse and I. Mondino (CERN).

following. When analyzing surface resistance data obtained with the Quadrupole Resonator several things have to be taken into account to compare the results to cavity data. One advantage is that the heat flow on the sample surface is completely lateral and therefore there is no thermal feedback effect [15]. The field configuration of accelerating cavities is in general such that the magnetic and the electric geometry factor are almost equal. For the sample surface area of the Quadrupole Resonator this is not the case. By the calorimetric (RF-DC compensation) technique explained in detail in [15] one obtains the power dissipated under RF P_{RF} directly. Using the field distribution on the sample and in the entire resonator volume one can derive the magnetic surface resistance R_S of the sample using

$$R_S = \frac{2\mu_0^2 P_{RF}}{\int_{\text{Sample}} |\vec{B}|^2 dS}. \quad (5)$$

This formula assumes that all losses are caused by the surface magnetic field. If however one would assume that all losses are caused by the surface electric field,

$$R_S^E = \frac{2\mu_0 P_{RF}}{\epsilon_0 \int_{\text{Sample}} |\vec{E}|^2 dS}. \quad (6)$$

has to be used to calculate the electric surface resistance R_S^E . For most accelerating cavities $R_S \approx R_S^E$ holds. Note that this does not mean that the losses from electric and magnetic origin are equal, but that the magnetic and the electric geometry factors are equal. For the Quadrupole Resonator with its narrow gap structure $R_S \approx R_S^E$ does not hold. For example a power P_{RF} dissipated on the sample at 400 MHz corresponding to an R_S of $1\text{ n}\Omega$ corresponds to an R_S^E of $53.5\text{ n}\Omega$. An interesting feature of the Quadrupole Resonator is that the ratio

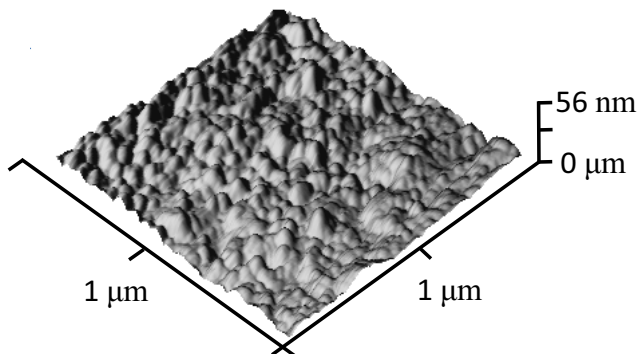


Fig. 4. Surface profile from the niobium film sample obtained from AFM. The lateral resolution of the image is 4 nm.

between electric and magnetic field is frequency dependent and scales like

$$\int_{\text{Sample}} |\vec{E}|^2 dS / \int_{\text{Sample}} |\vec{B}|^2 dS \propto f^2. \quad (7)$$

This means that a power P_{RF} dissipated at 800 MHz corresponding to an R_S of 1 n Ω corresponds to an R_S^E of 13.4 n Ω . For details see [3].

To test the properties of ITE a sample is required for which these temperature independent losses remain dominant up to relatively large temperatures. This condition was obtained for a micrometer thin niobium film sample sputtered on a copper substrate, which was kept under normal air for 10 years. Using XPS the thickness of its surface layer was found to be significantly larger as a reference bulk niobium sample prepared by BCP [3]. The thin film has a grain size of a few nm as measured by atomic force microscopy see Fig 4. This is several orders of magnitude smaller than typical values of fine grain bulk niobium surfaces prepared for accelerating cavities. Oxides formed between grain boundaries can significantly increase the interface area through which the tunneling process occurs.

Using the Quadrupole Resonator the sample was measured at 400 and 800 MHz over a temperature range between 2 and 4.5 K. In general the Quadrupole Resonator enables also measurements at 1200 MHz. However for the sample investigated here thermal runaway was observed for fields above about 10 mT. That is why no data measured at 1200 MHz is included in the analysis. The complete data set consists of 183 values $R_S(f, T, B, E)$. It has been collectively fitted to a single set of parameters. In order to do this Eq.8 had to be extended to account for the BCS losses for each temperature and frequency. The total surface resistance is now considered to be

$$R_S = R_S^E(E) + R_0(f) + R_{\text{BCS}}(f, T). \quad (8)$$

Unlike for the analysis above here R_0 only accounts for the residual losses from sources other than ITE. BCS losses from thermally activated particles are accounted for by $R_{\text{BCS}}(f, T)$.

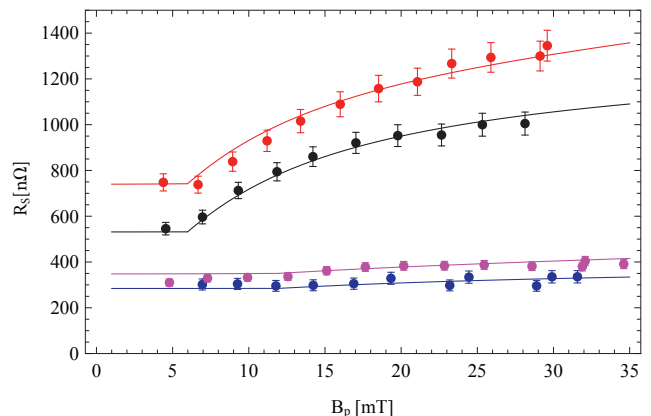


Fig. 5. Surface resistance R_S of a niobium film sample tested with the Quadrupole Resonator at 400 MHz (2.5 K (blue), 4 K (magenta)) and 800 MHz (2.5 K (black), 4 K (red)). Each data point R_S was obtained under the assumption that all losses are solely caused by the surface magnetic field. The lines show predictions from a collective least squares multiparameter fit to Eq. 8. The total data set comprises 183 values $R_S(f, T, B, E)$.

The field dependence of both terms are considered small compared to the ITE losses. For the BCS surface resistance

$$R_{\text{BCS}} = \mu_0^2 \omega^2 \sigma_0 RRR \cdot \lambda(T, l)^3 \frac{\Delta}{k_B T} \ln \left(\frac{\Delta}{\hbar \omega} \right) \frac{e^{-\Delta/k_B T}}{T} \quad (9)$$

is used, which is a good approximation in the dirty limit. Low field surface resistance and penetration depth change measurements have shown that this sample has a low RRR and therefore the dirty limit approximation is reasonable [3]. No parameter of R_{BCS} is varied to minimize χ^2 . All are obtained from different measurements. While RRR and Δ are taken from low field surface resistance measurements, λ is taken from penetration depth change measurements. For details refer to [3].

The complete data set consisting of 183 values $R_S(f, T, E)$ has been collectively fitted to Eq. 8 with five fit parameters. A $\chi^2=167.9$ was obtained for the fit parameter values of $R_{S,\text{sat}}^E=17000\pm 500$ n Ω , $b=1.06\pm 0.10$ MV/m and $E^0=0.610\pm 0.015$ MV/m, $R_0=275\pm 7$ n Ω at 400 MHz and $R_0=500\pm 11$ n Ω at 800 MHz. The value of χ^2 is slightly lower than the number of data points indicating that the experimental uncertainty was a bit overestimated.

For illustration R_S is plotted as a function of B for the temperatures of 2.5 and 4 K for both frequencies in Fig. 5. This corresponds to about one fifth of the complete data set. Note that to calculate R_S for each individual data point Eq. 5 has been used. To fit the complete data collectively to a single set of parameters the frequency dependence 7 has to be taken into account. Subtracting the fitted values of $R_0(f)$ and the calculated $R_{\text{BCS}}(f, T)$ individually from each data point $R_S^E(E)$ can be calculated from Eq. 6. This data is plotted in Fig. 6.

For this sample $R_{S,\text{sat}}^E$ is three orders of magnitude larger than for the bulk niobium TESLA type cavity, corresponding to a higher density of trapped states similar to what has been found for the HIE-Isolde quarter wave cavity also produced from sputtering niobium on a copper substrate. The onset

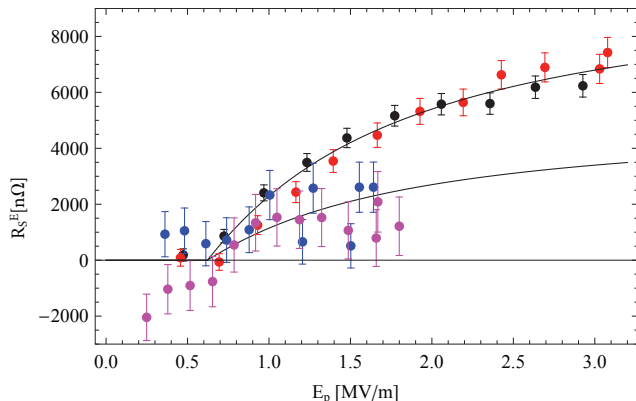


Fig. 6. Electric surface resistance at 400 MHz (2.5 K (blue), 4 K (magenta)) and 800 MHz (2.5 K (black), 4 K (red)) of a niobium film sample. The same data is plotted as in Fig. 5, here under the assumption that all field dependent losses are caused by the surface electric field. R_{BCS} and R_0 have been subtracted from each data point and the fit curves.

field E^0 is one order of magnitude smaller for the sample, which might be correlated to the roughness of the sample in the nanometer scale, as measured by AFM, see Fig 4. For further surface analytic measurements on this sample in comparison to bulk niobium surfaces refer to [3]. Also here, the phenomenological fit parameters $R_{S,sat}^E$, b and E^0 can be correlated to a set of physical parameters with meaningful values as $\beta^*=12$, $\varepsilon_r=10$, $E_c - E_F=0.01$ eV, $d=2.0$ nm and $\langle xn_T \rangle=1.2 \cdot 10^{18}$ $1/(eV\text{m}^2)$. A critical assessment of these numbers lies however beyond the scope of this paper.

In summary the analysis of the niobium on copper sample measured with the Quadrupole Resonator confirms the threshold effect observed for the cavity data shown above. It is also confirmed that this threshold does not depend on temperature. The strong frequency dependence of R_S observed can be explained by electrical losses taking into account the Quadrupole Resonator's frequency dependent ratio between electric and surface magnetic fields. A collective fit to the ITE model of a large data set comprising two frequencies and several temperatures gives an excellent representation of the data suggesting the ITE model is indeed applicable to this data.

IV. DISCUSSION

A variety of surface resistance data from different cavities and samples have been fitted to the ITE model. The Quadrupole Resonator measurements showed smaller threshold fields E_0 compared to the cavity data. This variation can for the most part be attributed quite naturally to a variation of the oxide thickness with the applied treatment. X-ray photoelectron spectroscopy (XPS) measurements on this sample have shown that the oxide layer of this sample is thick compared to a bulk niobium sample for which no ITE losses have been measured [3]. Also in [3] the data has been analyzed with different theoretical models. The huge difference in the field dependent R_S for the different frequencies in combination with the frequency dependent ratio B_p/E_p strongly suggests an electrical loss mechanism.

A. Comparison with the thermal contact resistance model

The thermal contact resistance model was recently proposed to explain the field dependent losses in Nb/Cu cavities and samples [16]. The basic idea of the model is that the superconducting film is not perfectly in contact with the copper substrate but locally detached without peeling off. Under the influence of the RF field, these microscopic spots heat up due to the suppressed cooling until they go into a local thermal runaway and are driven into the normal conducting state. The stronger the RF field, the more micro-quenches occur and contribute to the overall surface resistance with their normal resistivity. Each overall performance curve $\overline{R_S}$ can be described by the local surface resistance R_S and a statistical distribution function of contact resistance $f(R_B)$:

$$\overline{R_S}(T_0, B_p) = \int_0^\infty R_S(T_0, B_p, R_B) f(R_B) dR_B. \quad (10)$$

$\overline{R_S}$ is derived from measurements via measuring the quality factor Q for cavities (with $\overline{R_S} = G/Q$) or via a calorimetric method for Quadrupole Resonator samples. A distribution function can then be derived by inverting Eq. 10.

We process the data of the niobium film sample measured in the Quadrupole Resonator in the context of this model: Based on the $R_S(T)$ measurements the temperature increase ΔT for a given contact resistance is calculated via

$$\Delta T = R_B \frac{1}{2} R_S \left(\frac{B_p}{\mu_0} \right)^2 \quad (11)$$

and fed back into $R_S(T) \rightarrow R_S(T + \Delta T)$ for each frequency and bath temperature T_0 combination. As a result the thermal runaway field B_{quench} is derived as function of contact resistance values which can then be used to translate $R_S(B_p, R_B)$ into $R_S(B_p, B_{\text{quench}})$. We follow [16] where the integral in Eq. 10 is approximated by appropriate discretization procedures and use $R_S(B_p, B_{\text{quench}})$ to obtain a set of distribution function points which can then be fitted with an analytic expression. We process all available data sets, but discard sets with less than 6 points for the distribution function and sets where the standard error of the fit is bigger than 60%. The remaining data sets along with their distribution function are shown in Fig. 7. The distribution functions of the 800 MHz data agree moderately well with each other; however with large standard errors. We calculate the weighted average of the distribution functions of the 800 MHz data across all temperatures and find that the $f(800 \text{ MHz}, 4.5 \text{ K})$ even lies outside the weighted standard deviation \overline{f} .

The model also allows for an estimate of the corresponding surface fraction of detached film from the substrate via

$$A_{\text{detached}} = \int_{\min(R_B)}^\infty f(R_B, \text{Nb/Cu}) dR_B, \text{Nb/Cu}. \quad (12)$$

For the 800 MHz data we find on average

$$A_{800, \text{detached}} = (0.058 \pm 0.008) \% \quad (13)$$

which is the typical order of magnitude [16].

From the 400 MHz data sets only the 2.5 K set remained. The resulting distribution function is similar to the (800 MHz,

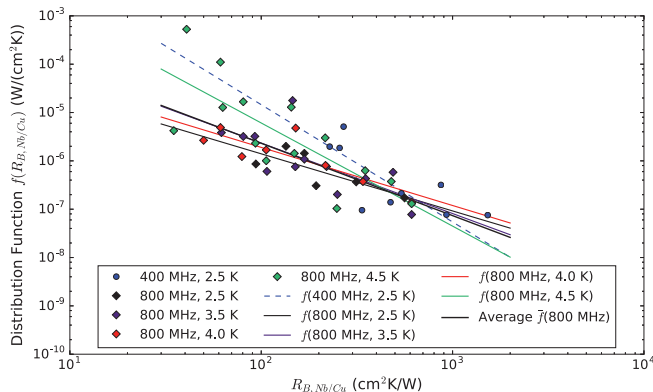


Fig. 7. Distribution function $f(R_B, \text{Nb/Cu})$ for the niobium film sample tested with the Quadrupole Resonator. The corresponding surface resistance is shown in Fig. 5.

4.5 K) data but significantly different from all other data sets. Also the detached surface area of 0.0025 % is not in agreement with the 800 MHz results.

It has to be noted that the thermal contact resistance model is not a fit and a solution can be found for any data set. Hence, to conclude that the thermal contact resistance model is the dominant loss mechanism, the same distribution function ought to be derived for different temperatures and/or frequencies. This has been consistently shown with previous analyses on standard performing HIE-ISOLDE cavity data at different temperatures [17] and on another Quadrupole Resonator Nb/Cu sample at different frequencies and temperatures [18]. Given the large errors and only moderate agreement of the presented data, we consider the analysis not supporting the thermal contact resistance model as the dominant loss mechanism. Moreover, given the nature of the loss mechanism, we would not expect a saturation but rather a stronger surface resistance increase with higher RF fields as often observed as an exponential increase of R_S with field in Nb/Cu cavities. Overall, we conclude that the analysis of the data in the context of the thermal contact resistance model neither contradicts nor sufficiently competes with ITE being the dominant loss mechanism.

V. CONCLUSION

In conclusion, the dependency of the surface resistance on the applied field strength strongly depends on the surface preparation. This indicates a variety of different dominant field dependent loss mechanisms. Some cavities exhibit an R_S increasing above a threshold field saturating at higher field. In this paper it has been shown that measurements on a bulk niobium cavity, showing this behavior of R_S on the surface electric field, can be well described by the ITE model. For a niobium on copper quarter wave cavity these losses were found to be stronger, which could be correlated to more trapped states participating in the exchange. To further test the predictions of the ITE model a niobium thin film sample was tested with the Quadrupole Resonator. These measurements showed field dependent losses independent on temperature, which scale linearly with frequency, if one assumes that they are caused

by the surface electric field. These findings are consistent with the predictions of the ITE model and in contradiction with the thermal contact resistance model.

Our results allow to better understand the field dependent surface resistance of superconducting niobium. This can be used for the development of future accelerating cavities. In particular a possible explanation for the larger field dependent surface resistance found in some cavities produced of niobium films on copper substrates, a technology widely used for cavity operation at 4.2 K [19], is given by the ITE model.

VI. ACKNOWLEDGMENT

The authors would like to thank Jürgen Halbritter for fruitful discussions on the ITE loss mechanism, A. Romanenko, I. Mondino and M. Therasse for providing the cavity data. This work was supported by the German Doctoral Students program of the Federal Ministry of Education and Research (BMBF) and by a Marie Curie International Outgoing Fellowship within the EU Seventh Framework Programme for Research and Technological Development (2007-2013).

REFERENCES

- [1] H. Padamsee, *RF superconductivity: Science, Technology, and Applications*. New York, NY: Wiley, 2009.
- [2] P. Bernard et al., "Experiments with the CERN superconducting 500 MHz cavity," *Nuclear Instruments & Methods*, vol. 190, pp. 257–282, 1981.
- [3] T. Junginger, "Investigations of the surface resistance of superconducting materials," Ph.D. dissertation, University of Heidelberg, 2012.
- [4] J. Halbritter, "On electric surface impedance," *Zeitschrift für Physik B*, vol. 31, pp. 19–37, 1978.
- [5] A. Romanenko et al., "Effect of mild baking on superconducting niobium cavities investigated by sequential nanoremoval," *Phys. Rev. ST Accel. Beams*, vol. 16, p. 012001, 2013.
- [6] B. Aune et al., "Superconducting TESLA cavities," *Phys. Rev. ST Accel. Beams*, vol. 3, p. 092001, Sep 2000.
- [7] J. Halbritter, "On the oxidation and on the superconductivity of niobium," *Applied Physics A - Solids and Surfaces*, vol. 43, pp. 1–28, 1987.
- [8] M. Delheusy et al., "X-ray investigation of subsurface interstitial oxygen at Nb/oxide interfaces," *Appl. Phys. Lett.*, vol. 92, p. 101911, 2008.
- [9] Y. Kim et al., "Direct atomic-scale imaging of hydrogen and oxygen interstitials in pure niobium using atom-probe tomography and aberration-corrected scanning transmission," *ACS Nano*, vol. 1, pp. 732–739, 2012.
- [10] J.W. Schultze and M.M. Lohrengel, "Stability, reactivity and breakdown of passive films. problems of recent and future research," *Electrochim Acta*, vol. 45, pp. 2499–2513, 2000.
- [11] V. Eyert, "The metal-insulator transition of NbO₂: An embedded Peierls instability," *Europhys. Lett.*, vol. 58, pp. 851–856, 2002.
- [12] Y. Zhao, Z. Zhang, and Y. Lin, "Optical and dielectric properties of a nanostructured NbO₂ thin film prepared by thermal oxidation," *J. Phys. D: Appl. Phys.*, vol. 37, pp. 3392–3395, 2004.
- [13] A. G. et al., "Nitrogen and argon doping of niobium for superconducting radio frequency cavities: a pathway to highly efficient accelerating structures," *Superconductor Science and Technology*, vol. 26, no. 10, p. 102001, 2013.
- [14] E. Mahner, S. Calatroni, E. Chiaveri, E. Haebel, and J. M. Tessier, "A new instrument to measure the surface resistance of superconducting samples at 400 MHz," *Review of Scientific Instruments*, vol. 74, pp. 3390–3393, 2003.
- [15] T. Junginger, W. Weingarten, and C.P. Welsch, "Extension of the measurement capabilities of the quadrupole resonator," *Review of Scientific Instruments*, vol. 83, p. 063902, 2012.
- [16] V. Palmieri and R. Vaglio, "Thermal contact resistance at the nb/cu interface as a limiting factor for sputtered thin film rf superconducting cavities," *Superconductor Science and Technology*, vol. 29, no. 1, p. 015004, 2015.
- [17] A. Miyazaki, private communication.

- [18] S. Aull, "Trapped flux measurements and thermal boundary resistance analysis for an ecr nb film," in *7th International workshop on thin films and new ideas for pushing the limits of rf superconductivity*, 2016.
- [19] S. Calatroni, "20 Years of experience with the Nb/Cu technology for superconducting cavities and perspectives for future developments," *Physica C*, vol. 441, pp. 95–101, 2006.