

Case Report Section

Paper co-edited with the European LeukemiaNet

Translocation (X;20)(q13;q13.3): a nonrandom abnormality in four patients with myeloid disorders: case 2

Kavita S Reddy, Kathy Richkind

Genzyme Genetics, Orange, CA, USA (KSR); Genzyme Genetics, Santa Fe, NM, USA (KER)

Published in Atlas Database: January 2005

Online updated version: <http://AtlasGeneticsOncology.org/Reports/0X20ReddyID100010.html>
DOI: 10.4267/2042/38172

This work is licensed under a Creative Commons Attribution-Noncommercial-No Derivative Works 2.0 France Licence.
© 2005 Atlas of Genetics and Cytogenetics in Oncology and Haematology

Clinics

Age and sex

61 years old female patient.

Previous history

Preleukemia: Myelofibrosis. Previous malignancy: A low-grade lobular and ductal carcinoma with a small percentage of intraductal breast disease treated with tamoxifen.

Organomegaly

No hepatomegaly, no splenomegaly, no enlarged lymph nodes, no central nervous system involvement.

Blood

WBC: $3.05 \times 10^9/l$

HB: 8.1g/dl

Platelets: $62 \times 10^9/l$

Cyto-Pathology Classification

Diagnosis

Myelofibrosis -> acute leukemia.

Survival

Treatment: Induction treatment: topotecan and cytarabine.

Relapse: no

Status: Alive

Survival: 55 months.

Karyotype

Sample: PB

Culture time: 24/48h unstimulated cultures.

Banding: G-banding.

Results:

46,X,t(X;20)(q13;q13.3),der(1;7)(q10;p10)[20]/46,XX[1].

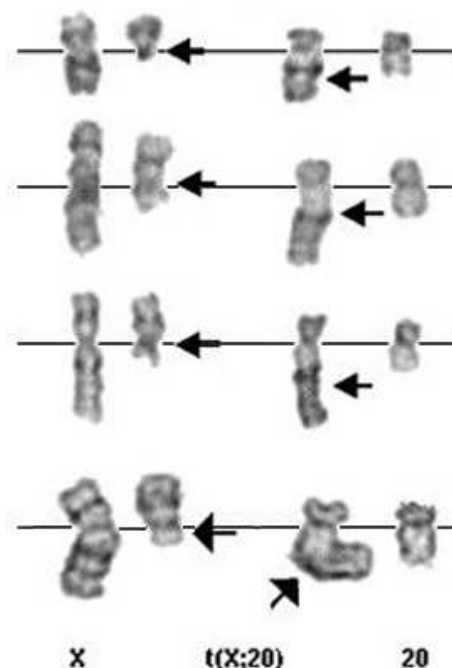


Fig. 1. Partial karyotypes of the translocation $t(X;20)(q13;q13.3)$ for cases 1•4 (top to bottom). Arrows indicate the derivatives 20 and X.

References

Gray BA, Cornfield D, Bent-Williams A, Zori RT. Translocation (X;20)(q13.1;q13.3) as a primary chromosomal finding in two patients with myelocytic disorders. *Cancer Genet Cytogenet.* 2003 Mar;141(2):169-74

Reddy KS, Richkind K, Ross M, Seirra R. Translocation (X;20)(q13;q13.3): a nonrandom abnormality in four patients with myeloid disorders. *Cancer Genet Cytogenet.* 2005 Feb;157(1):70-3

Wong KF, Kwong YL, Tang KC. Biclinal acute monoblastic leukemia showing del(7q) and trisomies 9 and 22. *Cancer Genet Cytogenet.* 1995 Jul 1;82(1):70-2

This article should be referenced as such:

Reddy KS, Richkind KE. Translocation (X;20)(q13;q13.3): a nonrandom abnormality in four patients with myeloid disorders: case 2. *Atlas Genet Cytogenet Oncol Haematol.* 2005; 9(1):80-81.
