



ELSEVIER

Available online at www.sciencedirect.com

ScienceDirect

Current Opinion in
Biotechnology

Origins, evolution, domestication and diversity of *Saccharomyces* beer yeasts

Brigida Gallone^{1,2,3,4,5}, Stijn Mertens^{1,2,5}, Jonathan L Gordon^{1,2,5},
Steven Maere^{3,4}, Kevin J Verstrepen^{1,2,5} and Jan Steensels^{1,2,5}

Yeasts have been used for food and beverage fermentations for thousands of years. Today, numerous different strains are available for each specific fermentation process. However, the nature and extent of the phenotypic and genetic diversity and specific adaptations to industrial niches have only begun to be elucidated recently. In *Saccharomyces*, domestication is most pronounced in beer strains, likely because they continuously live in their industrial niche, allowing only limited genetic admixture with wild stocks and minimal contact with natural environments. As a result, beer yeast genomes show complex patterns of domestication and divergence, making both ale (*S. cerevisiae*) and lager (*S. pastorianus*) producing strains ideal models to study domestication and, more generally, genetic mechanisms underlying swift adaptation to new niches.

Addresses

¹ Laboratory for Genetics and Genomics, Centre of Microbial and Plant Genetics (CMPG), KU Leuven, Kasteelpark Arenberg 22, B-3001 Leuven, Belgium

² Laboratory for Systems Biology, VIB Center for Microbiology, KU Leuven, Bio-Incubator, Gaston Geenslaan 1, 3001 Leuven, Belgium

³ Department of Plant Biotechnology and Bioinformatics, Ghent University, Technologiepark 927, 9052 Ghent, Belgium

⁴ VIB Center for Plant Systems Biology, Technologiepark 927, 9052 Ghent, Belgium

⁵ Leuven Institute for Beer Research, KU Leuven, Bio-Incubator, Gaston Geenslaan 1, B-3001 Leuven, Belgium

Corresponding authors: Verstrepen, Kevin J (kevin.verstrepen@kuleuven.vib.be), Steensels, Jan (jan.steensels@kuleuven.vib.be)

Current Opinion in Biotechnology 2018, **49**:148–155

This review comes from a themed issue on **Food biotechnology**

Edited by **Maria Marco** and **Eddy Smid**

For a complete overview see the [Issue](#) and the [Editorial](#)

Available online 3rd September 2017

<http://dx.doi.org/10.1016/j.copbio.2017.08.005>

0958-1669/© 2017 The Authors. Published by Elsevier Ltd. This is an open access article under the CC BY-NC-ND license (<http://creativecommons.org/licenses/by-nc-nd/4.0/>).

Introduction

‘Domestication’ is a term that refers to artificial selection and breeding of wild species to obtain cultivated variants with enhanced desirable features that thrive in man-made environments, often at the cost of suboptimal fitness in natural settings. Several genotypic and phenotypic

signatures of domestication have been described in crops, livestock and pets. These include genome decay, polyploidy, chromosomal rearrangements, gene amplifications and deletions, horizontal gene transfer and loss of genetic diversity due to bottlenecks [1,2]. Interestingly, similar phenomena are also observed in various microbial species, both prokaryotic and eukaryotic, that are linked to human food production.

Perhaps the most well studied model is the common brewer’s and baker’s yeast, *Saccharomyces cerevisiae*, which is the main driver in many industrial fermentations. However, studies focusing on the evolution of industrial *Saccharomyces* strains often use the terms ‘adaptive evolution’ or ‘domestication’ too freely. For example, both terms are commonly used to explain phenotypic divergence from wild ancestors, overlooking alternative explanations such as random genetic drift [3]. Only recently, more elaborate studies have reported clear genome-wide signatures of domestication as well as convergent evolution of industrially relevant traits in separate lineages. These observations provide conclusive evidence that industrial yeast diversity is not solely shaped by genetic drift caused by bottlenecks and small isolated populations, but also as a result of selection and niche adaptation. In wine yeasts for example, adaptive horizontal gene transfer events [4,5,6*] and copy number variations [7,8,9,10] have been described that increase sugar and nitrogen metabolic activity, conferring competitive advantages during grape must fermentation and providing better tolerance to chemicals used in vineyards (e.g. copper sulphate) and in wine [11] (e.g. sulphite) (For a review see [7]). Interestingly however, the strongest genetic and phenotypic signatures of domestication are found in yeasts used for beer production. Several distinctive features make traditional beer production an ideal setting for microbial domestication. Firstly, beer yeasts are harvested and re-used after the fermentation process to initiate the next fermentation batch, a process called ‘backslopping’. This continuous growth in a very specific industrial niche has resulted in continuous selection imposed by the brewing environment. Secondly, beer is produced year-round, causing a near-complete isolation from wild isolates. In contrast, wine is seasonal and wine yeasts spend most of the year in and around the vineyards or in the guts of insects, where nutrient limitation can trigger sexual cycles and hybridization with wild yeasts [12]. Therefore, present-day beer yeasts can be considered the result of a centuries-long evolution experiment

in a highly selective niche. In this review, we will highlight new insights into beer yeast evolution and domestication. We will discuss *S. cerevisiae* and *S. pastorianus*, both involved in production of specific beer types, which underwent a different route to domestication.

Domestication of *Saccharomyces cerevisiae* ale beer yeasts

Saccharomyces cerevisiae is the main microbial workhorse for the production of ale beers, which includes beer styles such as stouts, pale ales, doubles, triples and quadruples. As with all domesticated organisms, in *S. cerevisiae* the phenotypes of domesticated strains are a combination of enhanced selectable traits inherently present in *S. cerevisiae* (e.g. adaptation to sugar-rich, oxygen-limited environments and high tolerance to ethanol), and traits acquired during interaction with humans (e.g. efficient maltotriose utilization). In this review, we will expound on the latter aspect, and we refer to other review papers for the former [13,14].

Phylogenetics and population structure

Many studies of *S. cerevisiae* population structure focused on wine, wild and/or clinical strains, neglecting the broad diversity of beer yeasts. However, two recent studies, sequencing more than 100 ale beer strains, have provided the first comprehensive insight into their evolution and diversification [15^{**},16^{**}]. Both studies found that the majority of beer yeasts are genetically distinct from known wild stocks, and cluster into two independent lineages (Figure 1). It has been estimated that the last common ancestor (LCA) of each lineage occurred around 1600–1700AD, well after the first reported beer production (3000–4000 BC), but before the discovery of microbes in the 19th century. Interestingly, the estimated period of occurrence of these LCAs coincides with the gradual switch from domestic brewing in private households, to more professional large-scale brewing, first in pubs and monasteries, and later in breweries. This suggests that true domestication of yeast occurred far more recently than the first leveraging of yeast for the production of fermented food and beverages, which likely happened several thousand years ago [17].

Genome structure

Variation in genome structure, including changes in ploidy and large segmental duplications or copy number variations (CNVs), have repeatedly been found in association with adaptation to specific niches in experimentally evolved microbes [18^{**},19]. Perhaps not surprisingly, similar chromosomal changes are also a recurrent theme in domestication of higher organisms, especially in crop species, for which polyploidization promoted the proper genetic circumstances to domestication [20]. Similarly, *S. cerevisiae* beer yeasts show large-scale genome structure variations. While most wild *S. cerevisiae* strains are clean

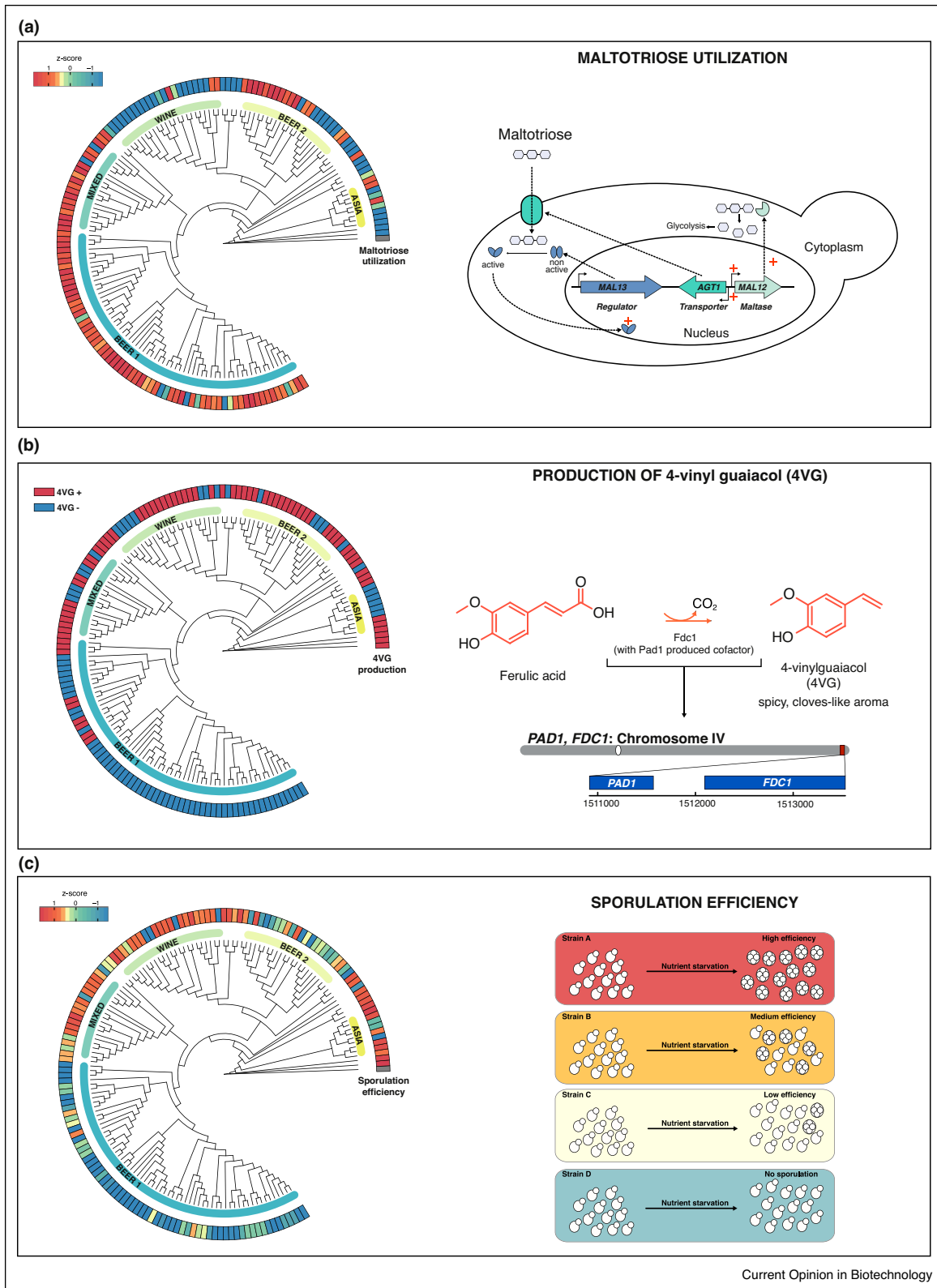
diploids with very few large segmental duplications, the ploidy of the vast majority of beer strains exceeds 2n, with most close to 4n (Figure 2a). However, most ale yeasts also show aneuploidies, and are almost never perfectly diploid or tetraploid (Figure 2b). Previous studies have shown that aneuploidies and polyploidies can provide an adaptive advantage under selection [18^{**}], but that they are often transient and are maintained until a more cost-effective adaptive strategy has evolved [21]. It has also been shown that small structural genome variations (e.g. duplication, deletion, recombination, gene conversion and rearrangement) are frequently located in telomeric and subtelomeric regions, which are known hotspots for evolution. These regions are functionally enriched for genes involved in nitrogen and carbon metabolism, ion transport and flocculation, and likely play a role in niche adaptation [15^{**},22,23^{*}].

Brewing phenotypes

The most obvious sign of adaptation to a specific industrial niche is arguably the accentuation of traits desirable for humans that are a burden for the organism in a natural setting. Closer examination of the genetic underpinnings of specific traits have provided strong evidence that human selection indeed underlies certain industrially relevant traits in beer yeasts.

A prime example of a domestication trait in beer yeast is their ability to ferment maltotriose, an important carbon source in beer wort, but not generally found in high concentrations in natural yeast environments. Efficient metabolism of maltotriose imposes a selective advantage in brewing environments where it is present at high concentrations because it opens the door to a previously under- or poorly utilized energy source. This trait has evolved independently and through different genetic pathways in the two main beer lineages, suggesting strong selection pressure [15^{**}] (Figure 1a). In one of the beer groups a homolog of the maltose transporter (called *AGTI*) with an increased affinity for maltotriose is present [24]. Interestingly, in the second beer group, the *AGTI* allele is non-functional, but the majority of isolates are able to efficiently ferment maltotriose, suggesting the presence of a distinct, yet unknown mechanism for the maltotriose uptake in this lineage. Another well-documented domestication trait is the selection against production of 4-vinyl guaiacol (4VG), an unpleasant aromatic compound that is derived from ferulic acid, a cell wall component of barley. Yeast requires two genes for decarboxylation of ferulic acid to 4VG: *PADI* and *FDCl*. Various independent nonsense mutations in these genes have been found in many industrial (and especially beer) yeasts, but not in biofuel or non-industrial isolates, suggesting that the selection of 4VG-free fermentations has favoured the spread of domesticated beer yeasts unable to produce this specific off-flavour (Figure 1b) [15^{**},16^{**}].

Figure 1



Genetic and phenotypic diversity of industrial *S. cerevisiae* strains. In each panel, a cladogram depicting genetic relationship and a heatmap (surrounding the cladogram) depicting phenotypic behaviour of each strain is given on the left (data obtained from [15**]). On the right, a schematic depiction of the phenotypic traits is given. **(a)** Maltotriose utilization: beer yeasts show a significantly higher capacity to metabolize

Apart from human-driven selection for specific traits, domestication is often also accompanied by relaxation of selective constraints on traits that are not advantageous or too costly in man-made environments. This relaxed selection can result in gene loss or pseudogenisation of genes that are no longer required for survival, a process dubbed ‘genome decay’ [1]. In ale yeasts this is reflected by their inability to survive environmental and nutrient stress conditions not encountered during continuous growth in the nutrient-rich wort medium [15**]. One likely example of this phenomenon is represented by the lack of a functional sexual cycle in most ale beer isolates [15**] (Figure 1c), a trait with a crucial role in speeding adaptation under new, harsh conditions, but with limited added value in benign environments [25].

Domestication of *Saccharomyces pastorianus* lager beer yeasts

With over 90% market share, lager beer is by far the most popular beer style globally. The production process differs in many ways from ale beer brewing, but arguably the most profound distinction is that a different yeast species is used. Lager is brewed using *S. pastorianus*, which originates from the interspecific hybridization between *S. cerevisiae* and *S. eubayanus*, a closely related species that is not typically associated with industrial fermentations [26,27*,28*].

Phylogenetics and population structure

Lager strains are divided in two main distinct lineages, most commonly referred to as ‘Saaz’ (Type 1) and ‘Frohberg’ (Type 2). Whereas the existence of these two lineages suggests some degree of convergent domestication, the precise ancestry and evolution of the two *S. pastorianus* lineages is still controversial (for a review see [29]). Three main hypotheses for the *S. pastorianus* origin have been proposed, and different analyses have provided support for each. The most widespread hypothesis involves two completely independent hybridization events, each involving a different domesticated ale-type *S. cerevisiae* and a different wild *S. eubayanus* strain (Figure 3a). This hypothesis is supported by phylogenetic analysis, where the relative branch lengths for the *S. cerevisiae* and the *S. eubayanus* subgenomes are significantly different between the groups [27**], as well as by the pattern of loss or retention of subtelomeric regions in the *cerevisiae* part of the lager yeast genome, which are very different in Saaz and Frohberg yeasts [30]. However,

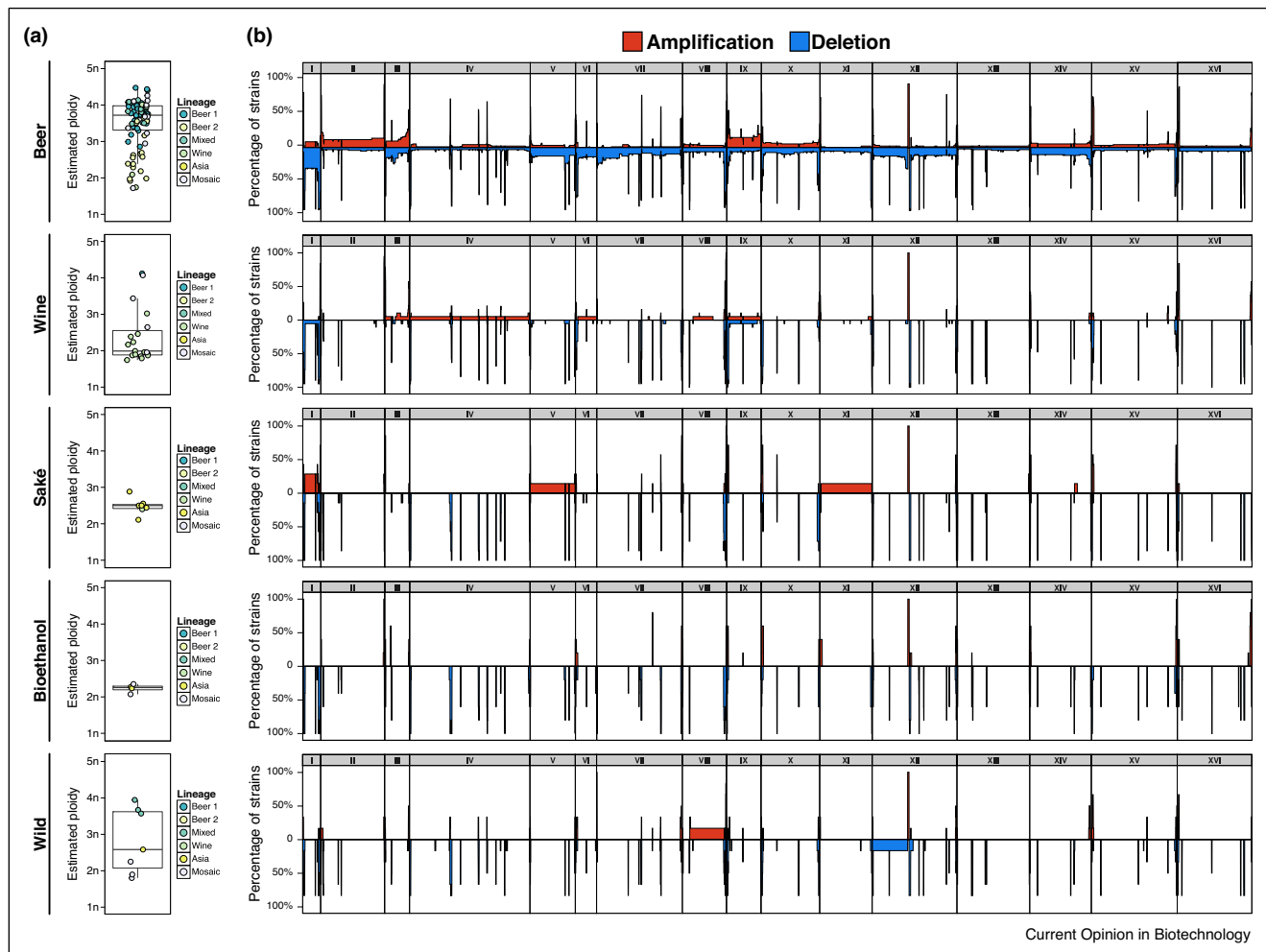
other studies have identified several *S. eubayanus*/*S. cerevisiae* translocations that share identical breakpoints within the subgenomes of both Saaz and Frohberg lineages [31,32] (Figure 3b). Although it has been argued that identical breakpoints could have resulted from i) independent events at recombination hotspots or fragile sites in *Saccharomyces* chromosomes, or ii) events that occurred in one of the parental strains prior to the hybridization [27**], they might also indicate a shared hybridization event prior to the divergence in the distinct lager lineages. A further hypothesis suggests a combination of the two scenarios; a single hybridization event between a haploid *S. cerevisiae* and a diploid *S. eubayanus* that led to an ancestral Saaz-like hybrid, followed by a second hybridization with a distinct haploid *S. cerevisiae* isolate that led to a Frohberg-like ancestral hybrid [33*] (Figure 3c).

Genome structure – interaction between subgenomes

Experiments where new interspecific hybrids are generated in the laboratory have shown that the genomes of newly formed hybrids tend to be highly unstable and undergo progressive genomic evolution until a more stable karyotype is reached. Hybrid genomic instability is probably due to an interplay between the relaxed selection on regions of genetic redundancy introduced by the hybridization event, selection acting on gene dosage balance, the potential co-adaptation of genes from the same parental genome and selection imposed by their growth environment [34,35,36,37]. Genomic changes include copy number variations [38] and partial or total chromosome loss [38], but also rearrangements between both subgenomes, resulting in chimaeric chromosomes [32]. Many of these mechanisms have been shown to allow adaptation in experimentally evolving interspecific hybrids. For example, loss-of-heterozygosity in newly developed interspecific hybrids is shown to be a reproducible adaptive strategy in low-nutrient environments, highlighting that hybrid genome resolution can be driven by positive selection acting on existing heterozygosity [39]. Chimaerism can be adaptive on the level of individual genes, for example, new interspecific *Saccharomyces* hybrids evolved in stringent nitrogen limitation recurrently evolve chimaeric *MEP1* alleles [40]. In lager yeasts, more than 20 chimaeric genes have been identified so far, including chimaeric variants of *ALD2* and *TDH2*, both involved in ethanol metabolism [32].

(Figure 1 Legend Continued) maltotriose, a prominent carbon source in beer medium. *AGT1*, a homolog of the sugar transporter *MAL11*, encodes for a permease with increased affinity to maltotriose compared to the wild type allele. *AGT1* is present in the Beer 1 and the Mixed clade, but absent and/or non-functional in the Wine and the Beer 2 clade. (b) Production of 4-vinyl guaiacol (4VG): 4VG is a spicy clove-like aroma compound, generally undesired in most fermented beverages. It is produced by yeast by the decarboxylation of ferulic acid, an abundant phenolic compound found in many plant cell walls, by the *FDC1*-encoded decarboxylase. This decarboxylase requires a flavin-derived cofactor produced by *PAD1*. *FDC1* and *PAD1* are clustered in the subtelomeric region of the right arm of chromosome IV. Many industrial yeasts, most notably the yeast in the Beer 1 clade, acquired loss-of-function mutations in *PAD1* and/or *FDC1*, resulting in a loss of the ability to produce 4VG [15**,16**]. (c) Sporulation efficiency: yeasts from the main beer lineages are generally obligate asexual or show low sporulation efficiency compared to strains from other clades.

Figure 2



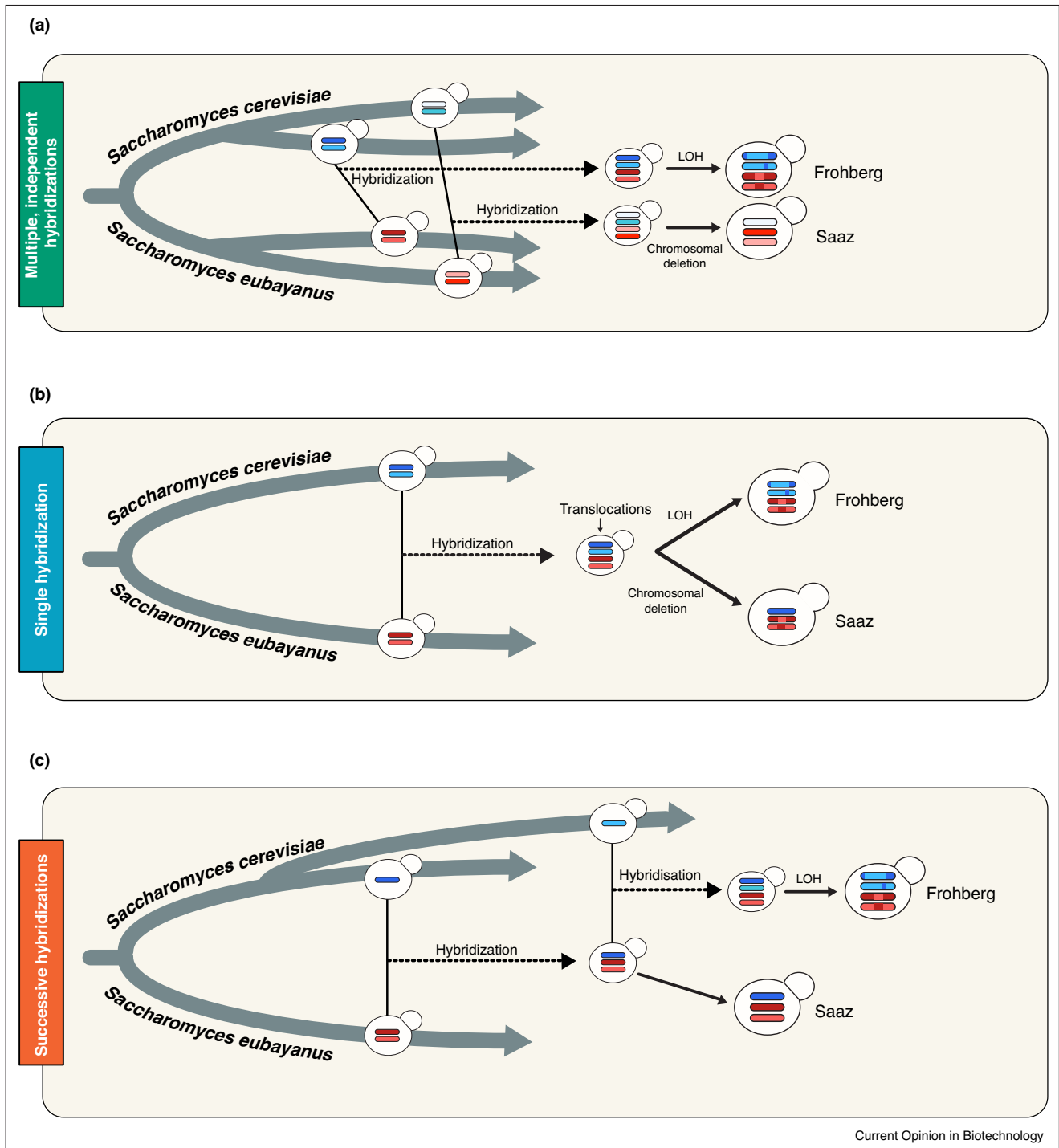
Ploidy variation of industrial yeast genomes. (a) Box plots representing the estimated ploidy of *S. cerevisiae* strains grouped by niche of isolation (beer, wine, saké, bioethanol, wild); colours indicate phylogenetic relationship (lineage) (cf. Figure 1—circular bands of the phylogenetic tree); strains with admixed ancestries, not belonging to any specific clean lineage, are indicated as 'mosaic'. Black lines represent median value and box edges are the 25th and 75th percentiles. Data obtained from [15**]. (b) Genome-wide visualization of CNV profiles compared to the reference strain S228C, aggregated across all strains originating from different niches; colours indicate amplification (red) and deletion (blue). Data obtained from [15**].

Brewing phenotypes

The dominance of *S. pastorianus* in the lager brewing industry suggests a strong selective advantage of the interspecific hybrid over their respective parental species. It has been argued that some parts of the *S. eubayanus* genome confer enhanced cold-tolerance, while the *S. cerevisiae* subgenome holds the advantage of other brewing adaptations, such as efficient fermentation, including the use of maltotriose. However, maltotriose transporters from *S. eubayanus* and not *S. cerevisiae* enable maltotriose utilization in some Saaz-type lager yeasts [41]. Conversely, certain *S. cerevisiae* strains show adaptation to

cold environments [42], which implies that the cold-tolerance does not necessarily originate from *S. eubayanus*, and that the origin of lager yeasts may have a different foundation. Recent papers suggest that increased fitness of interspecific yeast hybrids can also be due to genetic incompatibilities that perturb safeguard mechanisms that would normally limit growth in the parental strains, leading to hybrids that divide more (and thus have a higher fitness) in stressful environments, such as beer wort at low temperatures [43]. However, more research is required to untangle the specific roles of lager yeast subgenomes in the brewing environment.

Figure 3



Current models for the origin of Froberg and Saaz lineages. (a) Froberg and Saaz groups originated from at least two independent hybridization events between distinct diploid *S. cerevisiae* and diploid *S. eubayanus* parental strains. (b) Froberg and Saaz groups originated from a single hybridization event between a diploid *S. cerevisiae* and a diploid *S. eubayanus*. Translocations occurred in the ancestral hybrid prior to the divergence of the Saaz and Froberg lineages and are shared between the two groups. After hybridization, the Froberg lineage experienced loss of variation between intra-homologous chromosomes in the *S. cerevisiae* subgenome via loss of heterozygosity [33*] and the Saaz lineage lost roughly half of the *S. cerevisiae* derived chromosomes. (c) Froberg and Saaz groups originated from at least one shared hybridization event between a haploid *S. cerevisiae* and a diploid *S. eubayanus*. The triploid ancestral hybrid further diverged into the Saaz lineage, and the Froberg lineage arose by another hybridization event with a distinct haploid *S. cerevisiae* [33*].

Conclusions and outlook

Recent studies have demonstrated that beer yeasts have been domesticated by enduring growth in man-made fermentation environments. The strong selective pressure imposed over many generations has contributed to the emergence of desirable phenotypes, but has also dramatically affected the genomic structure and genome stability of the domesticates.

Interestingly, continuous ‘backslopping’ is not common practice anymore in most of today’s commercial breweries. Instead, brewers dispose of their yeast culture after a few consecutive fermentations to start a new brew with a frozen stock culture. This continual reversion to the same yeast stock ensures consistency of their product, but prevents further evolution of the beer yeast. Therefore evolution and domestication of beer yeasts within breweries may have practically halted. However, the process has now moved to specialized labs, where the expanding experimental toolbox and the wealth of ‘omics’ data available for *Saccharomyces* yeasts opens new avenues to generate novel and superior industrial variants. Specifically, experimental evolution, similar to the process in traditional brewing, can be used in conjunction with techniques like crossing, marker-assisted breeding and mutagenesis to effectively generate and test new phenotypic variants and combinations [44,45]. Thus, several centuries after the dawn of beer yeast domestication by commercial-scale brewing, a second revolution, sparked by biotechnology, is now driving a new era of beer yeast evolution and domestication.

Conflicts of interest

None.

Acknowledgements

BG and SMAere acknowledge the financial support by VIB and the Research Foundation-Flanders (FWO) [grant number G018915N]. Work in the lab of KJV is supported by KU Leuven (JLG, SMertens, JS), ERC Consolidator Grant [grant number CoG682009], HFSP program [grant number RGP0050/2013], KU Leuven NATAR Program Financing, VIB, EMBO YIP program, FWO (JS), and VLAIO.

References and recommended reading

Papers of particular interest, published within the period of review, have been highlighted as:

- of special interest
- of outstanding interest

1. Driscoll CA, Macdonald DW, O'Brien SJ: **From wild animals to domestic pets, an evolutionary view of domestication.** *Proc Natl Acad Sci U S A* 2009, **106**:9971-9978.
2. Purugganan MD, Fuller DQ: **The nature of selection during plant domestication.** *Nature* 2009, **457**:843-848.
3. Zörgö E, Gjuvsland A, Cubillos FA, Louis EJ, Liti G, Blomberg A, Omholt SW, Warringer J: **Life history shapes trait heredity by accumulation of loss-of-function alleles in yeast.** *Mol Biol Evol* 2012, **29**:1781-1789.
4. Marsit S, Mena A, Bigey F, Sauvage FX, Couloux A, Guy J, Legras JL, Barrio E, Dequin S, Galeote V: **Evolutionary advantage**

conferred by an eukaryote-to-eukaryote gene transfer event in wine yeasts. *Mol Biol Evol* 2015, **32**:1695-1707.

5. Almeida P, Barbosa R, Zalar P, Imanishi Y, Shimizu K, Turchetti B, Legras JL, Serra M, Dequin S, Couloux A *et al.*: **A population genomics insight into the Mediterranean origins of wine yeast domestication.** *Mol Ecol* 2015, **24**:5412-5427.
6. Marsit S, Sanchez I, Galeote V, Dequin S: **Horizontally acquired oligopeptide transporters favour adaptation of *Saccharomyces cerevisiae* wine yeast to oenological environment.** *Environ Microbiol* 2016, **18**:1148-1161.
7. Marsit S, Dequin S: **Diversity and adaptive evolution of *Saccharomyces* wine yeast: a review.** *FEMS Yeast Res* 2015, **15** pii: fov067.
8. Dunn B, Richter C, Kvitek DJ, Pugh T, Sherlock G: **Analysis of the *Saccharomyces cerevisiae* pan-genome reveals a pool of copy number variants distributed in diverse yeast strains from differing industrial environments.** *Genome Res* 2012, **22**:908-924.
9. Steenwyk J, Rokas A: **Extensive copy number variation in fermentation-related genes among *Saccharomyces cerevisiae* wine strains.** *G3(Bethesda)* 2017, **7**:1475-1485.
10. Strobe PK, Skelly Da, Kozmin SG, Mahadevan G, Stone EA, Magwene PM, Dietrich FS, McCusker JH: **The 100-genomes strains, an *S. cerevisiae* resource that illuminates its natural phenotypic and genotypic variation and emergence as an opportunistic pathogen.** *Genome Res* 2015, **25**:762-774.
11. Almeida P, Barbosa R, Bensasson D, Gonçalves P, Sampaio JP: **Adaptive divergence in wine yeasts and their wild relatives suggests a prominent role for introgressions and rapid evolution at noncoding sites.** *Mol Ecol* 2017, **26**:2167-2182.
12. Stefanini I, Dapporto L, Berná L, Polsinelli M, Turillazzi S, Cavalieri D: **Social wasps are a *Saccharomyces* mating nest.** *Proc Natl Acad Sci U S A* 2016, **113**:2247-2251.
13. Piskur J, Rozpedowska E, Polakova S, Merico A, Compagno C: **How did *Saccharomyces* evolve to become a good brewer?** *Trends Genet* 2006, **22**:183-186.
14. Steensels J, Verstrepen KJ: **Taming wild yeast: potential of conventional and nonconventional yeasts in industrial fermentations.** *Annu Rev Microbiol* 2014, **68**:61-80.
15. Gallone B, Steensels J, Prael T, Soriaga L, Saels V, Herrera-Malaver B, Merlevede A, Roncoroni M, Voordeckers K, Miraglia L *et al.*: **Domestication and divergence of *Saccharomyces cerevisiae* beer yeasts.** *Cell* 2016, **166** 1397-1410.e16.

The authors provide a comprehensive overview of the genomic and phenotypic diversity of industrial *Saccharomyces cerevisiae* yeasts. Beer yeasts are the focal point of this study, and various hallmarks of domestication are identified.

16. Gonçalves M, Pontes A, Almeida P, Barbosa R, Serra M, Libkind D, Hutzler M, Gonçalves P, Sampaio JP, Heijne WH *et al.*: **Distinct domestication trajectories in top-fermenting beer yeasts and wine yeasts.** *Curr Biol* 2016, **26**:2750-2761.

This paper provides the genetic analysis of a set of 28 *Saccharomyces cerevisiae* ale-beer strains. The authors demonstrate that beer yeasts are polyphyletic, show a broader genetic diversity compared to wine strains and contain stronger signatures of domestication.

17. Hornsey IS (Ed): *A history of beer and brewing.* Cambridge: The Royal Society of Chemistry; 2003.
18. Selmecki AM, Maruvka YE, Richmond PA, Guillet M, Shores N, Sorenson AL, De S, Kishony R, Michor F, Dowell R *et al.*: **Polyploidy can drive rapid adaptation in yeast.** *Nature* 2015, **519**:349-352.

This paper describes how polyploidy can speed up adaptation of yeast to new environments. The authors show that polyploidisation can affect adaptability directly, through ploidy-specific changes in cell physiology, or indirectly, for example by allowing beneficial mutations to spread more rapidly in a population.

19. Voordeckers K, Kominek J, Das A, Espinosa-Cantú A, De Maeyer D, Arslan A, Van Pee M, van der Zande E, Meert W, Yang Y *et al.*: **Adaptation to high ethanol reveals complex evolutionary pathways.** *PLOS Genet* 2015, **11**:e1005635.
20. Salman-Minkov A, Sabath N, Mayrose I, Ellstrand NC, Rieseberg LH: **Whole-genome duplication as a key factor in crop domestication.** *Nat Plants* 2016, **2**:16115.
21. Yona AH, Manor YS, Herbst RH, Romano GH, Mitchell A, Kupiec M, Pilpel Y, Dahan O: **Chromosomal duplication is a transient evolutionary solution to stress.** *Proc Natl Acad Sci* 2012, **109**:21010-21015.
22. Brown CA, Murray AW, Verstrepen KJ: **Rapid expansion and functional divergence of subtelomeric gene families in yeasts.** *Curr Biol* 2010, **20**:895-903.
23. Yue JX, Li J, Aigrain L, Hallin J, Persson K, Oliver K, Bergström A, Coupland P, Warringer J, Lagomarsino MC *et al.*: **Contrasting evolutionary genome dynamics between domesticated and wild yeasts.** *Nat Genet* 2017 <http://dx.doi.org/10.1038/ng.3847>.
In this paper, the authors use long-read sequencing to obtain complete and high quality assemblies of a set of 12 wild and domesticated *Saccharomyces* yeasts. These analyses allow the authors to define the boundaries between the core chromosomes subtelomeres and telomeres. Moreover, they revealed that the association with human-made environments results in drastic structural genome evolution, such as unbalanced rearrangements (insertions, deletions, duplications) and interchromosomal reshuffling.
24. Alves SL, Herbets RA, Hollatz C, Trichez D, Miletti LC, de Araujo PS, Stambuk BU: **Molecular analysis of maltotriose active transport and fermentation by *Saccharomyces cerevisiae* reveals a determinant role for the AGT1 permease.** *Appl Environ Microbiol* 2008, **74**:1494-1501.
25. Goddard MR, Godfray H CJ, Burt A: **Sex increases the efficacy of natural selection in experimental yeast populations.** *Nature* 2005, **434**:636-640.
26. Libkind D, Hittinger CT, Valério E, Gonçalves C, Dover J, Johnston M, Gonçalves P, Sampaio JP: **Microbe domestication and the identification of the wild genetic stock of lager-brewing yeast.** *Proc Natl Acad Sci U S A* 2011, **108**:14539-14544.
27. Baker E, Wang B, Bellora N, Peris D, Hulfachor AB, Koshalek JA, Adams M, Libkind D, Hittinger CT: **The genome sequence of *Saccharomyces eubayanus* and the domestication of lager-brewing yeasts.** *Mol Biol Evol* 2015, **32**:2818-2831.
In this paper, the authors focused on the *S. eubayanus* subgenome of lager yeast. They revealed that this subgenome has experienced increased rates of evolution since hybridization, and underwent a specifically strong shift in selection regimes compared to the *S. cerevisiae* subgenome, hinting towards a *S. cerevisiae* subgenome pre-adapted to the beer environment. This is in line with the hypothesis that lager yeasts originated in the beer-brewing environment.
28. Peris D, Langdon QK, Moriarty RV, Sylvester K, Bontrager M, Charron G, Leducq J-B, Landry CR, Libkind D, Hittinger CT: **Complex ancestries of lager-brewing hybrids were shaped by standing variation in the wild yeast *Saccharomyces eubayanus*.** *PLOS Genet* 2016, **12**:e1006155.
In this paper, the population structure of all currently available *S. eubayanus* strains is investigated, and compared to the *S. eubayanus* subgenome of lager yeasts. The authors demonstrate that variation segregating among wild *S. eubayanus* persists among the lager-brewing yeasts and that the relationship between wild *S. eubayanus* and *S. eubayanus* lager-subgenome is shaped by complex biogeographical and genetic patterns.
29. Monerawela C, Bond U: **Brewing up a storm: the genomes of lager yeasts and how they evolved.** *Biotechnol Adv* 2017, **35**:512-519.
30. Monerawela C, James TC, Wolfe KH, Bond U: **Loss of lager specific genes and subtelomeric regions define two different *Saccharomyces cerevisiae* lineages for *Saccharomyces pastorianus* Group I and II strains.** *FEMS Yeast Res* 2015, **15**: pii: fou008.
31. Walther A, Hesselbart A, Wendland J: **Genome sequence of *Saccharomyces carlsbergensis*, the world's first pure culture lager yeast.** *G3 (Bethesda)* 2014, **4**:783-793.
32. Hewitt SK, Donaldson I, Lovell SC, Delneri D, Kingdom U: **Sequencing and characterisation of rearrangements in three *S. pastorianus* strains reveals the presence of chimeric genes and gives evidence of breakpoint reuse.** *PLOS ONE* 2013, **9**: e92203.
33. Okuno M, Kajitani R, Ryusui R, Morimoto H, Kodama Y, Itoh T: **Next-generation sequencing analysis of lager brewing yeast strains reveals the evolutionary history of interspecies hybridization.** *DNA Res* 2016, **23**:67-80.
This paper presents the whole-genome sequence of 10 *S. pastorianus* strains, the largest genetic dataset of lager yeasts thus far. Comparative genome analysis of these strains favours the hypothesis of an independent origin of Saaz and Froberg type lager yeasts, but with at least one shared hybridization event.
34. Conant GC, Birchler JA, Pires JC: **Dosage, duplication, and diploidization: clarifying the interplay of multiple models for duplicate gene evolution over time.** *Curr Opin Plant Biol* 2014, **19**:91-98.
35. Morales L, Dujon B: **Evolutionary role of interspecies hybridization and genetic exchanges in yeasts.** *Microbiol Mol Biol Rev* 2012, **76**:721-739.
36. Albertin W, Marullo P: **Polyploidy in fungi: evolution after whole-genome duplication.** *Proc Biol Sci* 2012, **279**:2497-2509.
37. Sanchez MR, Miller AW, Liachko I, Sunshine AB, Lynch B, Huang M, Alcantara E, DeSevo CG, Pai DA, Tucker CM *et al.*: **Differential paralog divergence modulates genome evolution across yeast species.** *PLoS Genet* 2017, **13**:e1006585.
38. van den Broek M, Bolat I, Nijkamp JF, Ramos E, Luttik MAH, Koopman F, Geertman JM, de Ridder D, Pronk JT, Daran JM: **Chromosomal copy number variation in *Saccharomyces pastorianus* is evidence for extensive genome dynamics in industrial lager brewing strains.** *Appl Environ Microbiol* 2015, **81**:6253-6267.
39. Smukowski Heil CS, DeSevo CG, Pai DA, Tucker CM, Hoang ML, Dunham MJ: **Loss of heterozygosity drives adaptation in hybrid yeast.** *Mol Biol Evol* 2017 <http://dx.doi.org/10.1093/molbev/msx098>.
40. Dunn B, Paulish T, Stanbery A, Piotrowski J, Koniges G, Kroll E, Louis EJ, Liti G, Sherlock G, Rosenzweig F: **Recurrent rearrangement during adaptive evolution in an interspecific yeast hybrid suggests a model for rapid introgression.** *PLoS Genet* 2013, **9**:e1003366.
41. Magalhães F, Vidgren V, Ruohonen L, Gibson B: **Maltose and maltotriose utilisation by group I strains of the hybrid lager yeast *Saccharomyces pastorianus*.** *FEMS Yeast Res* 2016, **16**: fow053.
42. García-Ríos E, Morard M, Parts L, Liti G, Guillamón JM: **The genetic architecture of low-temperature adaptation in the wine yeast *Saccharomyces cerevisiae*.** *BMC Genomics* 2017, **18**:159.
43. Herbst RH, Bar-Zvi D, Reikhav S, Soifer I, Breker M, Jona G, Shimoni E, Schuldiner M, Levy AA, Barkai N: **Heterosis as a consequence of regulatory incompatibility.** *BMC Biol* 2017, **15**:38.
44. Steensels J, Snoek T, Meersman E, Nicolino MP, Voordeckers K, Verstrepen KJ: **Improving industrial yeast strains: exploiting natural and artificial diversity.** *FEMS Microbiol Rev* 2014, **38**:947-995.
45. Mertens S, Steensels J, Saels V, De Rouck G, Aerts G, Verstrepen KJ: **A large set of newly created interspecific *Saccharomyces* hybrids increases aromatic diversity in lager beers.** *Appl Environ Microbiol* 2015, **81**:8202-8214.